



**Cisco**

**Exam Questions 300-420**

Designing Cisco Enterprise Networks (ENSLD)

## About ExamBible

*[Your Partner of IT Exam](#)*

## Found in 1998

ExamBible is a company specialized on providing high quality IT exam practice study materials, especially Cisco CCNA, CCDA, CCNP, CCIE, Checkpoint CCSE, CompTIA A+, Network+ certification practice exams and so on. We guarantee that the candidates will not only pass any IT exam at the first attempt but also get profound understanding about the certificates they have got. There are so many alike companies in this industry, however, ExamBible has its unique advantages that other companies could not achieve.

## Our Advances

### \* 99.9% Uptime

All examinations will be up to date.

### \* 24/7 Quality Support

We will provide service round the clock.

### \* 100% Pass Rate

Our guarantee that you will pass the exam.

### \* Unique Gurantee

If you do not pass the exam at the first time, we will not only arrange FULL REFUND for you, but also provide you another exam of your claim, ABSOLUTELY FREE!

#### NEW QUESTION 1

Which control-plane technology allows the same subnet to exist across multiple network locations?

- A. LISP
- B. VXLAN
- C. FabricPath
- D. ISE mobility services

**Answer: B**

#### NEW QUESTION 2

Which OSPF area blocks LSA Type 3, 4 and 5, but allows a default summary route?

- A. normal
- B. stub
- C. NSSA
- D. totally stubby

**Answer: D**

#### NEW QUESTION 3

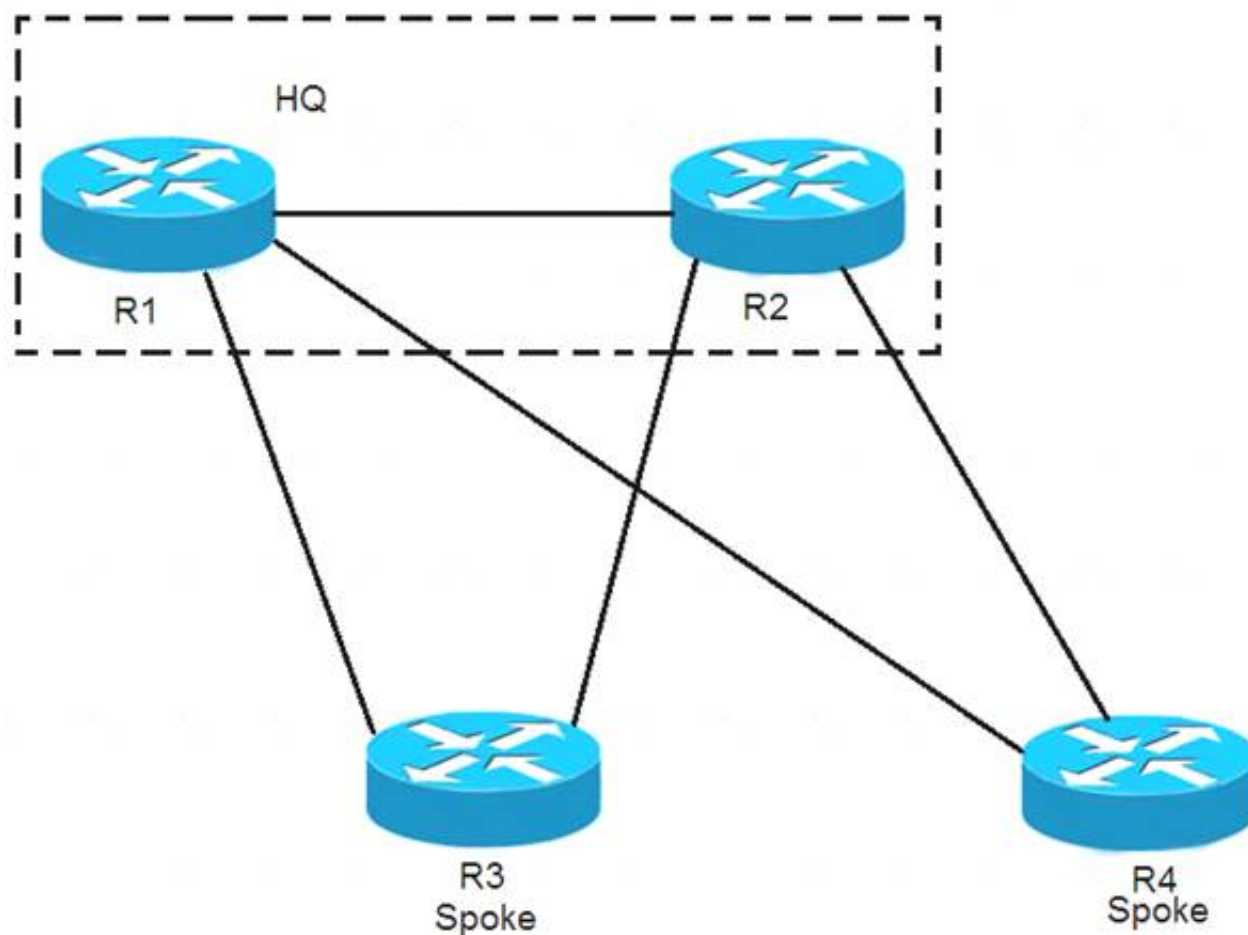
When a first hop redundancy solution is designed, which protocol ensures that load balancing occurs over multiple routers using a single virtual IP address and multiple virtual MAC addresses?

- A. GLBP
- B. IRDP
- C. VRRP
- D. HSRP

**Answer: A**

#### NEW QUESTION 4

Refer to the exhibit.



EIGRP has been configured on all links. The spoke nodes have been configured as EIGRP stubs, and the WAN links to R3 have higher bandwidth and lower delay than the links to R4. When a link failure occurs at the R1-R2 link, what happens to traffic on R1 that is destined for a subnet attached to R2?

- A. R1 has no route to R2 and drops the traffic
- B. R1 load-balances across the paths through R3 and R4 to reach R2
- C. R1 forwards the traffic to R3, but R3 drops the traffic
- D. R1 forwards the traffic to R3 in order to reach R2

**Answer: D**

#### NEW QUESTION 5

Which solution allows overlay VNs to communicate with each other in an SD-WAN Architecture?

- A. External fusion routers can be used to map VNs to VRFs and selectively route traffic between VRFs.
- B. GRE tunneling can be configured between fabric edges to connect one VN to another.

- C. SGTs can be used to permit traffic from one VN to another.
- D. Route leaking can be used on the fabric border nodes to inject routes from one VN to another.

Answer: B

NEW QUESTION 6

An engineer must propose a QoS architecture model that allows an application to inform the network of its traffic profile and to request a particular type of service to support its bandwidth and delay requirements. The application requires consistent and dedicated bandwidth end to end. Which QoS architecture model meets these requirements?

- A. DiffServ
- B. LLQ
- C. WRED
- D. IntServ

Answer: D

NEW QUESTION 7

Which two best practices must be followed when designing an out-of-band management network? (Choose two.)

- A. Enforce access control
- B. Facilitate network integration
- C. Back up data using the management network
- D. Ensure that the management network is a backup to the data network
- E. Ensure network isolation

Answer: AE

NEW QUESTION 8

A network engineer must connect two sites across a public network using a secure tunneling technology that supports multicast traffic. Which technology must be chosen?

- A. IPsec
- B. GRE
- C. PTPP
- D. GRE over IPsec

Answer: D

NEW QUESTION 9

Drag and drop the properties from the left onto the protocols they describe on the right.

HTTPS-based

SSH-based

built to support candidate configuration

lacks support for two-phase commit transactions

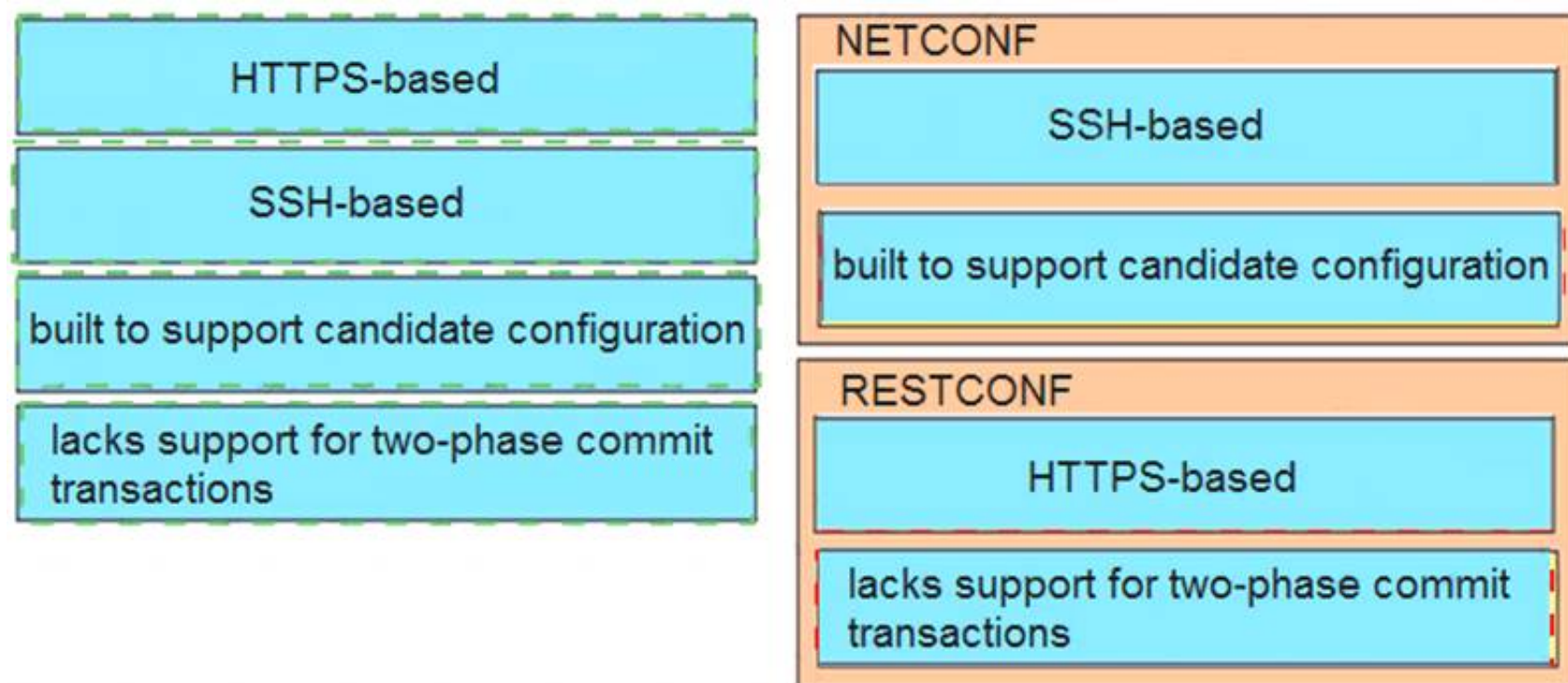
NETCONF

RESTCONF

- A. Mastered
- B. Not Mastered

Answer: A

Explanation:



#### NEW QUESTION 10

Which two statements describe source trees in a multicast environment? (Choose two.)

- A. Source trees guarantee the minimum amount of network latency for forwarding multicast traffic
- B. Source trees create an optimal path between the source and the receivers
- C. Source trees use a single common root placed at some chosen point in the network
- D. Source trees can introduce latency in packet delivery
- E. Source trees can create suboptimal paths between the source and the receivers

**Answer:** AB

#### NEW QUESTION 10

When a network is designed using IS-IS protocol, which two circuit types are supported? (Choose two.)

- A. nonbroadcast multiaccess
- B. multiaccess
- C. point-to-multipoint
- D. nonbroadcast
- E. point-to-point

**Answer:** BE

#### NEW QUESTION 14

Which function are fabric intermediate nodes responsible for in an SD-Access Architecture?

- A. mapping EIDs to RLOCs
- B. encapsulating user traffic in a VXLAN header including the SGT
- C. registering new endpoints in the HTDB
- D. transporting IP packets between edge nodes and border nodes

**Answer:** D

#### NEW QUESTION 18

What is the purpose of an edge node in an SD-Access network fabric?

- A. Edge nodes identify and authenticate endpoints and register endpoint information with control plane nodes.
- B. Edge nodes track endpoint IDs to location mappings, along with IPv4, IPv6, or MAC addresses.
- C. Edge nodes are the gateway between the fabric domain and network outside of the fabric.
- D. Edge nodes resolve lookup requests from edge and border nodes to locate destination endpoint IDs.

**Answer:** A

#### NEW QUESTION 22

When IPsec VPNs are designed, what is a unique requirement if support for IP Multicast is required?

- A. encapsulation of traffic with GRE or VTI
- B. IPsec forwarding using transport mode
- C. additional bandwidth for headend
- D. IPsec forwarding using tunnel mode

**Answer:** A

#### NEW QUESTION 24

Which routes does the overlay management protocol advertise in an SD-WAN overlay?

- A. underlay, MPLS, and overlay
- B. primary, backup, and load-balanced
- C. prefix, TLOC, and service
- D. Internet, MPLS, and backup

**Answer:** C

#### NEW QUESTION 25

A customer is discussing QoS requirements with a network consultant. The customer has specified that end-to-end path verification is a requirement. Which QoS solution meets this requirement?

- A. IntServ model with RSVP to support the traffic flows
- B. DiffServ model with PHB to support the traffic flows
- C. marking traffic at the access layer with DSCP to support the traffic flows
- D. marking traffic at the access layer with CoS to support the traffic flows

**Answer:** A

#### NEW QUESTION 26

Which two BGP features will result in successful route exchanges between eBGP neighbors sharing the same AS number? (Choose two.)

- A. advertise-best-external
- B. bestpath as-path ignore
- C. client-to-client reflection
- D. as-override
- E. allow-as-in

**Answer:** DE

#### NEW QUESTION 31

Which NETCONF operation creates filtering that is specific to the session notifications?

- A. <create-subscription>
- B. <commit>
- C. <notification>
- D. <logging>

**Answer:** A

#### NEW QUESTION 33

A router running ISIS is showing high CPU and bandwidth utilization. An engineer discovers that the router is configured as L1/L2 and has L1 and L2 neighbors. Which step optimizes the design to address the issue?

- A. Make this router a DIS for each of the interfaces
- B. Disable the default behavior of advertising the default route on the L1/L2 router
- C. Configure the router to be either L1 or L2
- D. Configure each interface as either L1 or L2 circuit type

**Answer:** D

#### NEW QUESTION 37

.....

## Relate Links

**100% Pass Your 300-420 Exam with ExamBible Prep Materials**

<https://www.exambible.com/300-420-exam/>

## Contact us

We are proud of our high-quality customer service, which serves you around the clock 24/7.

Viste - <https://www.exambible.com/>