



Cisco

Exam Questions 300-420

Designing Cisco Enterprise Networks (ENSLD)

NEW QUESTION 1

A company is running BGP on a single router, which has two connections to the same ISP. Which BGP feature ensures traffic is load balanced across the two links to the ISP?

- A. Multihop
- B. Multipath Load Sharing
- C. Next-Hop Address Tracking
- D. AS-Path Prepending

Answer: B

NEW QUESTION 2

An engineer is working for a large cable TV provider that requires multiple sources streaming video on different channels using multicast with no rendezvous point. Which multicast protocol meets these requirements?

- A. PIM-SM
- B. PIM-SSM
- C. any-source multicast
- D. BIDIR-PIM

Answer: D

NEW QUESTION 3

What are two valid scaling techniques when an EIGRP network is designed that consists of more than 1000 routers? (Choose two.)

- A. Use structured hierarchical topology with route summarization
- B. Used sub-second timers
- C. Use the distribute-list command to filter routes
- D. Modify delay parameters on the links
- E. Implement multiple EIGRP autonomous systems

Answer: AE

NEW QUESTION 4

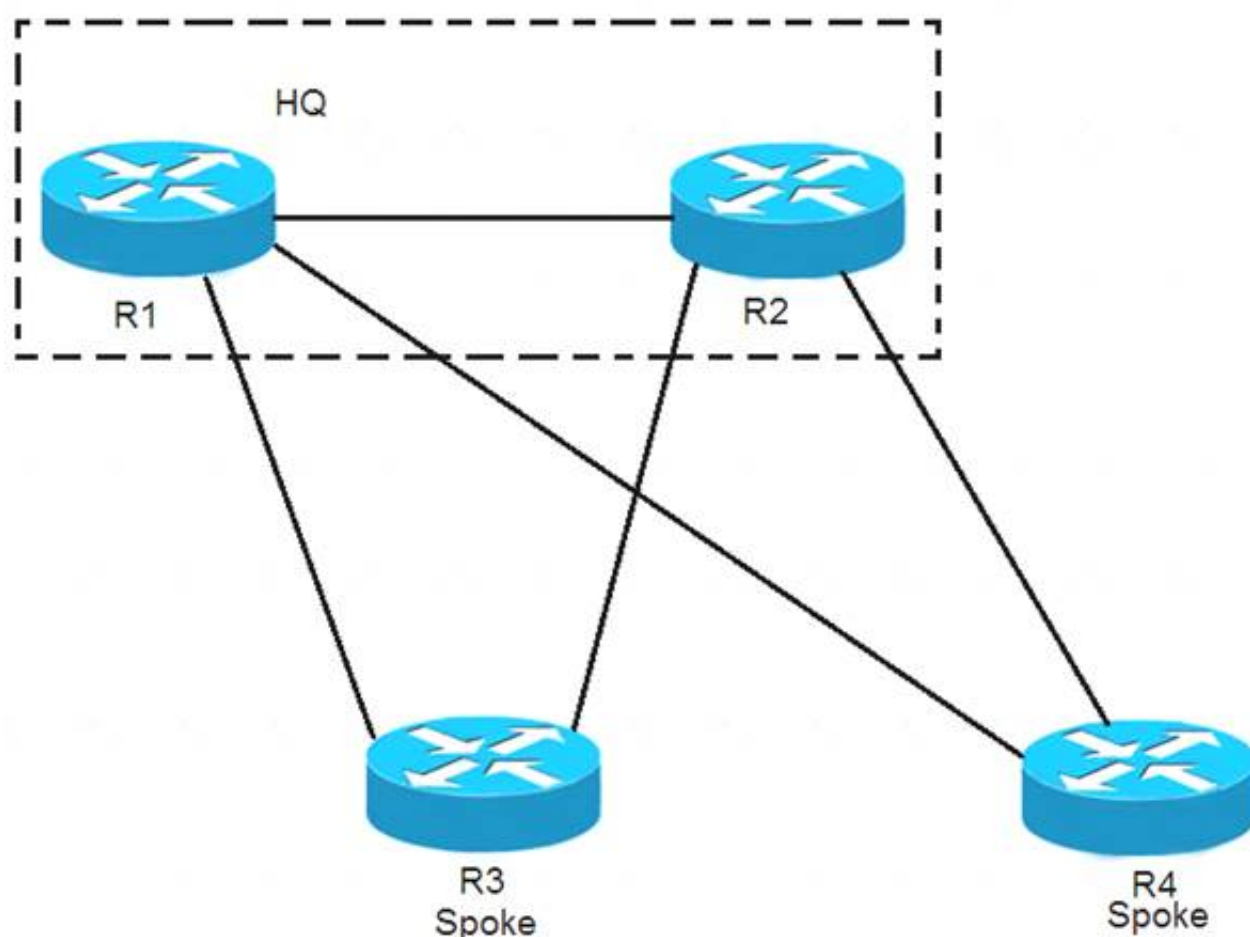
An engineer is designing a QoS policy that queues excess packets for later transmission. Which mechanism must be included in the design?

- A. shaping
- B. WRED
- C. policing
- D. RED

Answer: A

NEW QUESTION 5

Refer to the exhibit.



EIGRP has been configured on all links. The spoke nodes have been configured as EIGRP stubs, and the WAN links to R3 have higher bandwidth and lower delay than the links to R4. When a link failure occurs at the R1-R2 link, what happens to traffic on R1 that is destined for a subnet attached to R2?

- A. R1 has no route to R2 and drops the traffic
- B. R1 load-balances across the paths through R3 and R4 to reach R2
- C. R1 forwards the traffic to R3, but R3 drops the traffic
- D. R1 forwards the traffic to R3 in order to reach R2

Answer: D

NEW QUESTION 6

Which design consideration must be made when dual vEdge routers are deployed at a branch site?

- A. Use BGP AS-path prepending to influence egress traffic and use MED to influence ingress traffic from the branch.
- B. HSRP priorities must match the OMP routing policy to prefer one vEdge over the other.
- C. Traffic must be symmetrical as it egresses the vEdges and returns from remote sites for DPI to function properly.
- D. Configure BFD between vEdge routers to detect sub-second link failures.

Answer: A

NEW QUESTION 7

What is one function of the vSmart controller in an SD-WAN deployment?

- A. orchestrates vEdge and cEdge connectivity
- B. responsible for the centralized control plane of the SD-WAN network
- C. provides centralized network management and a GUI to monitor and operate the SD-WAN overlay
- D. provides a data-plane at branch offices to pass traffic through the SD-WAN network

Answer: B

NEW QUESTION 8

Which solution allows overlay VNs to communicate with each other in an SD-WAN Architecture?

- A. External fusion routers can be used to map VNs to VRFs and selectively route traffic between VRFs.
- B. GRE tunneling can be configured between fabric edges to connect one VN to another.
- C. SGTs can be used to permit traffic from one VN to another.
- D. Route leaking can be used on the fabric border nodes to inject routes from one VN to another.

Answer: B

NEW QUESTION 9

A network engineer must connect two sites across a public network using a secure tunneling technology that supports multicast traffic. Which technology must be chosen?

- A. IPsec
- B. GRE
- C. PTP
- D. GRE over IPsec

Answer: D

NEW QUESTION 10

Drag and drop the properties from the left onto the protocols they describe on the right.

HTTPS-based

SSH-based

built to support candidate configuration

lacks support for two-phase commit transactions

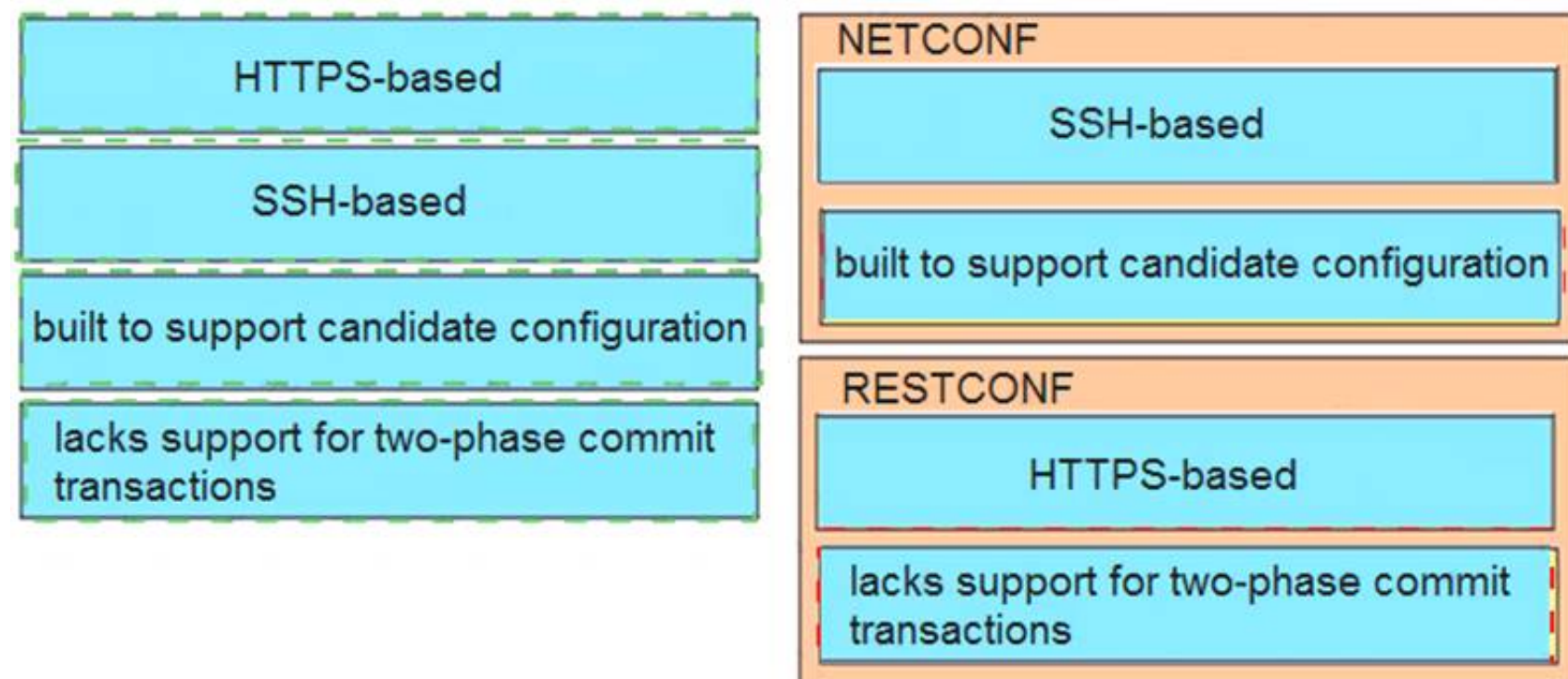
NETCONF

RESTCONF

- A. Mastered
- B. Not Mastered

Answer: A

Explanation:



NEW QUESTION 10

In an SD-WAN architecture, which methods are used to bootstrap a vEdge router?

- A. DHCP options or manual configuration
- B. vManage or DNS records
- C. ZTP or manual configuration
- D. DNS records or DHCP options

Answer: C

NEW QUESTION 12

Which two steps can be taken to improve convergence in an OSPF network? (Choose two.)

- A. Use Bidirectional Forwarding Detection
- B. Merge all the areas into one backbone area
- C. Tune OSPF parameters
- D. Make all non-backbone areas stub areas
- E. Span the same IP network across multiple areas.

Answer: CD

NEW QUESTION 17

Which function are fabric intermediate nodes responsible for in an SD-Access Architecture?

- A. mapping EIDs to RLOCs
- B. encapsulating user traffic in a VXLAN header including the SGT
- C. registering new endpoints in the HTDB
- D. transporting IP packets between edge nodes and border nodes

Answer: D

NEW QUESTION 20

What is the purpose of an edge node in an SD-Access network fabric?

- A. Edge nodes identify and authenticate endpoints and register endpoint information with control plane nodes.
- B. Edge nodes track endpoint IDs to location mappings, along with IPv4, IPv6, or MAC addresses.
- C. Edge nodes are the gateway between the fabric domain and network outside of the fabric.
- D. Edge nodes resolve lookup requests from edge and border nodes to locate destination endpoint IDs.

Answer: A

NEW QUESTION 24

An infrastructure team is concerned about the shared memory utilization of a device, and for this reason, they need to monitor the device state. Which solution limits impact on the device and provides the required data?

- A. IPFIX
- B. static telemetry
- C. on-change subscription
- D. periodic subscription

Answer: A

NEW QUESTION 28

Which design consideration should be observed when EIGRP is configured on Data Center switches?

- A. Perform manual summarization on all Layer 3 interfaces to minimize the size of the routing table.
- B. Prevent unnecessary EIGRP neighborships from forming across switch virtual interfaces.
- C. Lower EIGRP hello and hold timers to their minimum settings to ensure rapid route reconvergence.
- D. Configure multiple EIGRP autonomous systems to segment Data Center services and applications.

Answer: A

NEW QUESTION 33

Which routes does the overlay management protocol advertise in an SD-WAN overlay?

- A. underlay, MPLS, and overlay
- B. primary, backup, and load-balanced
- C. prefix, TLOC, and service
- D. Internet, MPLS, and backup

Answer: C

NEW QUESTION 38

Company A recently acquired another company. Users of the newly acquired company must be able to access a server that exists on Company A's network, both companies use overlapping IP address ranges. Which action conserves IP address space and provides access to the server?

- A. Use a single IP address to create overload NAT
- B. Use a single IP address to create a static NAT entry
- C. Build one-to-one NAT translation for every user that needs access
- D. Re-IP overlapping address space in the acquired company

Answer: A

NEW QUESTION 39

A customer is discussing QoS requirements with a network consultant. The customer has specified that endto- end path verification is a requirement. Which QoS solution meets this requirement?

- A. IntServ model with RSVP to support the traffic flows
- B. DiffServ model with PHB to support the traffic flows
- C. marking traffic at the access layer with DSCP to support the traffic flows
- D. marking traffic at the access layer with CoS to support the traffic flows

Answer: A

NEW QUESTION 40

Which design consideration must be made when using IPv6 overlay tunnels?

- A. Overlay tunnels that connect isolated IPv6 networks can be considered a final IPv6 network architecture.
- B. Overlay tunnels should only be considered as a transition technique toward a permanent solution.
- C. Overlay tunnels can be configured only between border devices and require only the IPv6 protocol stack.
- D. Overlay tunneling encapsulates IPv4 packets in IPv6 packets for delivery across an IPv6 infrastructure.

Answer: C

NEW QUESTION 41

An engineer is looking for a standards-driven YANG model to manage a multivendor network environment. Which model must the engineer choose?

- A. Native
- B. OpenConfig
- C. IETF
- D. IEEE NETCONF

Answer: C

NEW QUESTION 46

An engineer is designing an enterprise campus network. The LAN infrastructure consists of switches from multiple vendors, and Spanning Tree must be used as a Layer 2 loop prevention mechanism. All configured VLANs must be grouped in two SIP instances. Which standards-based Spanning Tree technology supports this design solution?

- A. MSTP
- B. RSTP
- C. Rapid PVST
- D. STP

Answer: A

NEW QUESTION 47

A router running ISIS is showing high CPU and bandwidth utilization. An engineer discovers that the router is configured as L1/L2 and has L1 and L2 neighbors. Which step optimizes the design to address the issue?

- A. Make this router a DIS for each of the interfaces
- B. Disable the default behavior of advertising the default route on the L1/L2 router
- C. Configure the router to be either L1 or L2
- D. Configure each interface as either L1 or L2 circuit type

Answer: D

NEW QUESTION 48

.....

Thank You for Trying Our Product

We offer two products:

1st - We have Practice Tests Software with Actual Exam Questions

2nd - Questions and Answers in PDF Format

300-420 Practice Exam Features:

- * 300-420 Questions and Answers Updated Frequently
- * 300-420 Practice Questions Verified by Expert Senior Certified Staff
- * 300-420 Most Realistic Questions that Guarantee you a Pass on Your First Try
- * 300-420 Practice Test Questions in Multiple Choice Formats and Updates for 1 Year

100% Actual & Verified — Instant Download, Please Click
[Order The 300-420 Practice Test Here](#)