

Microsoft

Exam Questions MS-700

Managing Microsoft Teams



NEW QUESTION 1

- (Topic 5)

You company has a Microsoft Office 365 subscription.

Users in the company's sales department frequently invite guest users to meetings.

You need to ensure that when the sales department users invite guest users to meetings, the guest users are admitted by default. The solution must only apply to the sales department users.

Which two actions should you perform? Each correct solution presents part of the solution. NOTE: Each correct selection is worth one point.

- A. In the global meeting policy, set Automatically admit users to Everyone.
- B. Create a new meeting policy and set Automatically admit users to Everyone.
- C. Apply the policy to the sales department users.
- D. In the global meeting policy, set Automatically admit users to Everyone in your organization.

Answer: BC

Explanation:

Reference:

<https://docs.microsoft.com/en-us/microsoftteams/meeting-policies-in-teams>

NEW QUESTION 2

- (Topic 5)

You have a Microsoft 365 E3 subscription that contains 500 users. All the users have computers that run Windows 10 and are joined to Azure AD.

You need to generate a report that identifies which documents the users copied from Microsoft Teams to USB devices.

What should you do first?

- A. Onboard the Windows 10 computers to Endpoint data loss prevention (Endpoint DLP).
- B. Assign the Microsoft 365 ES compliance add-on to each user.
- C. Create a custom data loss prevention (DLP) policy.
- D. Assign the Enterprise Mobility + Security ES add-on to each user.

Answer: B

Explanation:

According to the Microsoft documentation¹, to generate a report that identifies which documents the users copied from Teams to USB devices, you need to use advanced hunting on Microsoft Defender ATP. Advanced hunting lets you run queries to find threat activity involving USB devices, such as mounting and unmounting of USB drives or copying of files².

To use advanced hunting, you need to have one of the following roles:

- ? Security administrator
- ? Security reader
- ? Security operator
- ? Global administrator

The Groups Administrator role does not have access to advanced hunting or Microsoft Defender ATP.

Therefore, based on this information, the correct answer is B. Assign the Microsoft 365 E5 compliance add-on to each user. This add-on includes Microsoft Defender ATP and allows you to use advanced hunting features³. Alternatively, you can request one of the roles that have access to advanced hunting, such as Security administrator or Global administrator.

NEW QUESTION 3

- (Topic 5)

The Subscription has the Teams policy shown in the following exhibit:

+ Add Edit Duplicate Delete Reset Global policy Manage users 1 item				
✓	Name ↑	Description	Custom policy	Create private channels
	Global (Org-wide default)		No	Off

You need to ensure that the members of Group1 can create private channels. The solution must use the principle of least privilege.

What should you do first?

- A. Create a team template.
- B. Modify the Teams settings for the subscription.
- C. Modify the Global (Org-wide default) policy and set Create private channels to On.
- D. Create a Teams policy that has Create private channels set to On.

Answer: D

NEW QUESTION 4

- (Topic 5)

You have a Microsoft 365 E5 subscription that uses Microsoft Teams.

Users report that their presence information is available to external partners.

You need to ensure that the presence information is available only to the external partners on the users' contact lists.

What should you do?

- A. From PowerShell, run Set-CsPrivacyConfiguration -EnablePrivacyMode True.
- B. From External collaboration settings in the Azure Active Directory admin center, configure Guest user access restrictions.
- C. From PowerShell, run Set-CsTenantFederationConfiguration AllowFederatedUsers\$false.

D. From the Microsoft Teams admin center, add the external partners to the Allow only specific external domains list.

Answer: A

NEW QUESTION 5

- (Topic 5)

You have a Microsoft 365 subscription that contains several Microsoft SharePoint Online sites.

You need to ensure that the content stored in a SharePoint modern team site named Sales is available from Microsoft Teams. The solution must ensure that when a new channel is added to a team, a folder for the channel is created in the Sales site.

Solution: From the Microsoft Teams client you create a new team and select From a group or team.

Does this meet the goal?

- A. Yes
- B. No

Answer: B

NEW QUESTION 6

- (Topic 5)

Your company has a Microsoft 365 E5 subscription. You enable guest access for Microsoft Teams.

You need to prevent all users from downloading and opening files that contain malware by using Microsoft Teams channels.

What should you do first?

- A. From the Microsoft Purview compliance portal, create a data loss prevention (DLP) policy.
- B. From the Microsoft 365 Defender portal, select Turn on Defender for Office 365 for SharePoint, OneDrive, and Microsoft Teams
- C. From the Azure Active Directory admin center, add an identity provider.
- D. From the Azure Active Directory admin center, enable the End user protection baseline policy.

Answer: B

NEW QUESTION 7

HOTSPOT - (Topic 5)

Your company uses Microsoft Teams.

All users are assigned a Microsoft 365 E3 license.

You need to purchase add-on licenses that provide the following: The ability to add a logo to the meeting lobby

Automatic protection against malicious links in chats

Which add-on license should you obtain for each requirement? To answer, select the appropriate options in the answer area.

The ability to add a logo to the meeting lobby:



Automatic protection against malicious links posted in chats:



- A. Mastered
- B. Not Mastered

Answer: A

Explanation:

<https://learn.microsoft.com/en-us/microsoft-365/security/office-365-security/safe-links?view=o365-worldwide>

<https://learn.microsoft.com/en-us/microsoftteams/teams-add-on-licensing/advanced-communications>

NEW QUESTION 8

- (Topic 5)

You have a Microsoft 365 subscription that contains a user named User1.

User1 experiences audio issues while sharing his screen during Microsoft Teams meetings.

You need to investigate whether the headset of User1 causes the issues. Which report should you use?

- A. Quality of Experience
- B. Media reliability metrics
- C. Customer endpoint information support
- D. Failure Drill Down

Answer: A

Explanation:

Reference:

<https://docs.microsoft.com/en-us/microsoftteams/cqd-data-and-reports>

NEW QUESTION 9

- (Topic 5)

Your company has a Microsoft 365 subscription. You attempt to review call quality by location. When you sign in to the Microsoft Call Quality Dashboard, you discover that no locations are defined. You need to ensure that all the call quality information in the dashboard is segmented by location. What should you do first?

- A. From the Microsoft Teams admin center, configure reporting labels.
- B. From an administrator's computer, run the Network Testing Companion.
- C. From PowerShell, run the Set-CsQoEConfiguration cmdlet.
- D. From the Microsoft Teams admin center, run the Network Planner.

Answer: A

Explanation:

Reference:

<https://docs.microsoft.com/en-us/microsoftteams/learn-more-about-site-upload>

NEW QUESTION 10

- (Topic 5)

You have a Microsoft 365 subscription and an on-premises Active Directory domain that syncs by using Azure AD Connect. You need to change the Membership type of a group from Assigned (static) to Dynamic User. What should you use?

- A. Active Directory Users and Computers
- B. the Microsoft Teams client
- C. the Azure Active Directory admin center
- D. the Microsoft Teams admin center

Answer: C

NEW QUESTION 10

- (Topic 5)

You have a Microsoft 365 subscription that uses Microsoft Teams. A user reports an error when he attempts to share his screen during meetings by using the Microsoft Teams Windows Desktop client. You need to collect the Microsoft Teams client log files from the user's device. What should you do?

- A. From the Microsoft Teams client settings, select Disable GPU hardware acceleration.
- B. Select Ctrl + Alt + Shift + 1.
- C. Select the Windows logo key + Alt + Shift +1
- D. From the Microsoft Teams client settings, select Enable logging for meeting diagnostics.

Answer: B

Explanation:

Reference:

<https://docs.microsoft.com/en-us/microsoftteams/log-files>

NEW QUESTION 13

- (Topic 5)

You have a Microsoft 365 subscription that uses Microsoft Teams. You plan to implement Microsoft Teams Rooms. The solution must meet the following requirements:
? Support Microsoft Teams Rooms, Microsoft Surface Hub, and collaboration bars for Microsoft Teams.
? Ensure that Microsoft manages firmware and application updates for room systems and peripherals.
? Ensure that Microsoft monitors and troubleshoots room system and peripherals.
Which license should you purchase?

- A. Advanced Communications
- B. Microsoft Teams Rooms Premium
- C. Microsoft Teams Rooms Standard
- D. Microsoft 365 Business Voice

Answer: B

Explanation:

Reference:

<https://docs.microsoft.com/en-us/microsoftteams/rooms/rooms-licensing> <https://docs.microsoft.com/en-us/microsoftteams/rooms/microsoft-teams-rooms-premium>

NEW QUESTION 17

- (Topic 5)

You plan to deploy Microsoft Teams to a remote location. You perform a network readiness assessment for Microsoft Teams by using the Network Testing Companion. Which two tests are included in the assessment? Each correct answer presents part of the solution. NOTE: Each correct selection is worth one point.

- A. video quality tests
- B. trace route information
- C. Quality of Service (QoS) validation
- D. open and blocked ports
- E. audio quality tests

Answer: DE

NEW QUESTION 20

HOTSPOT - (Topic 5)

Your company has the following departments:

- Marketing
- Information technology (IT) The company uses Teams.

You need to recommend an access solution that meets the following requirements:

- The marketing department must collaborate with an external consultant by using a Microsoft PowerPoint presentation stored in the General channel of a new team.
- The IT department must be able to communicate with external consultants by using a private Teams chat and Teams calls.

Which type of access should you recommend for each department? To answer, select the appropriate options in the answer area. NOTE: Each correct selection is worth one point.

Answer Area

Marketing:

Guest access

B2B direct connect

External access

Guest access

IT:

B2B direct connect

B2B direct connect

External access

Guest access

- A. Mastered
- B. Not Mastered

Answer: A

Explanation:

Answer Area

Marketing:

Guest access

B2B direct connect

External access

Guest access

IT:

B2B direct connect

B2B direct connect

External access

Guest access

NEW QUESTION 23

- (Topic 5)

Note: This question is part of a series of questions that present the same scenario. Each question in the series contains a unique solution that might meet the stated goals. Some question sets might have more than one correct solution, while others might not have a correct solution.

After you answer a question in this section, you will NOT be able to return to it. As a result, these questions will not appear in the review screen.

Your company has a Microsoft 365 subscription.

You need to prevent a user named User1 from permanently deleting private chats in Microsoft Teams.

Solution: You place the mailbox of User1 on Litigation Hold. Does this meet the goal?

- A. Yes
- B. No

Answer: A

NEW QUESTION 26

- (Topic 5)

You have a Microsoft 365 subscription that uses Microsoft Teams. The subscription contains 1,000 users in the groups shown in the following table.

Name	Requirement
Group1	Full access to chat, calling, apps, and meetings in Microsoft Teams must be provided.
Group2	Access to external participants must be prevented. Video conferencing and screen sharing must be disabled. Private meetings must be disabled. Specific apps must be installed automatically.

You need to configure Microsoft Teams to meet the requirements. The solution must minimize administrative effort. What should you use?

- A. policy packages
- B. app setup policies
- C. Microsoft Teams policies
- D. Meetings policies

Answer: A

Explanation:

Reference:

<https://docs.microsoft.com/en-us/microsoftteams/assign-policies>

NEW QUESTION 29

- (Topic 5)

You have a Microsoft 365 subscription that uses Teams.

You have a room in Teams Rooms that contains a panel mounted at the entrance. You need to ensure that the panel displays a maximum room occupancy notification. What should you configure?

- A. a conciliation profile
- B. a notification rule
- C. an app setup policy
- D. a meeting policy

Answer: B

NEW QUESTION 34

- (Topic 5)

Your company has a Microsoft 365 subscription. The company uses Microsoft Teams.

You need to ensure that only Microsoft apps can be used in Microsoft Teams. What should you do from the Microsoft Teams admin center?

- A. From the global app setup policy, disable the Upload custom apps setting.
- B. From the Org-wide app settings, disable the Allow interaction with custom apps setting.
- C. From the Org-wide app settings, disable the Allow third party or custom apps setting.
- D. From the global app permission policy, enable the Allow All Apps setting for Microsoft apps.

Answer: C

Explanation:

Reference:

<https://docs.microsoft.com/en-us/microsoftteams/teams-custom-app-policies-and-settings#org-wide-custom-app-setting>

NEW QUESTION 36

- (Topic 5)

Your company has a Microsoft 365 subscription.

You need to ensure that users from a partner company named Contoso, Ltd. can collaborate with your

company's users in teams. The solution must ensure that the Contoso users can exchange chat messages in channels.

Which three actions should you perform before you add the Contoso users to teams? Each correct answer presents part of the solution.

NOTE: Each correct selection is worth one point.

- A. From the Services & add-ins settings in the Microsoft 365 admin center, set Let group members outside the organization access group content to On.
- B. From the Guest access settings in the Microsoft Teams admin center, set Allow guest access in Microsoft Teams to On.
- C. From the External collaboration settings in the Azure Active Directory admin center, add Contoso's domain to the list of target domains.
- D. From the External access settings in the Microsoft Teams admin center, add Contoso's domain to the Allowed list of domains.
- E. From the External collaboration settings in the Azure Active Directory admin center, set Guest users permissions are limited to No.
- F. From the Services & add-ins settings in the Microsoft 365 admin center, set Let group owners add people outside the organization to groups to On.

Answer: BDF

Explanation:

Reference:

<https://docs.microsoft.com/en-us/microsoftteams/manage-external-access> <https://docs.microsoft.com/en-us/microsoftteams/teams-dependencies>

NEW QUESTION 38

- (Topic 5)

Note: This question is part of a series of questions that present the same scenario. Each question in the series contains a unique solution that might meet the stated goals. Some question sets might have more than one correct solution, while others might not have a correct solution.

After you answer a question in this section, you will NOT be able to return to it. As a result, these questions will not appear in the review screen.

You have a Microsoft 365 subscription that contains several Microsoft SharePoint Online sites.

You need to ensure that the content stored in a SharePoint modern team site named Sales is available from Microsoft Teams. The solution must ensure that when a new channel is added to a team, a folder for the channel is created in the Sales site.

Solution: From a team, you add a tab for the Sales site. Does this meet the goal?

- A. Yes
- B. No

Answer: B

Explanation:
<https://support.office.com/en-us/article/Create-a-Microsoft-Team-from-SharePoint-545973b6-c38f-426a-b2b6-16405a561628>

NEW QUESTION 43

- (Topic 5)

Note: This question is part of a series of questions that present the same scenario. Each question in the series contains a unique solution that might meet the stated goals. Some question sets might have more than one correct solution, while others might not have a correct solution.

After you answer a question in this section, you will NOT be able to return to it. As a result, these questions will not appear in the review screen.

Your company has a Microsoft 365 subscription.

You need to prevent temporary employees from using the private chat feature in Microsoft Teams.

Solution: You create a teams policy and assign the policy to the users. Does this meet the goal?

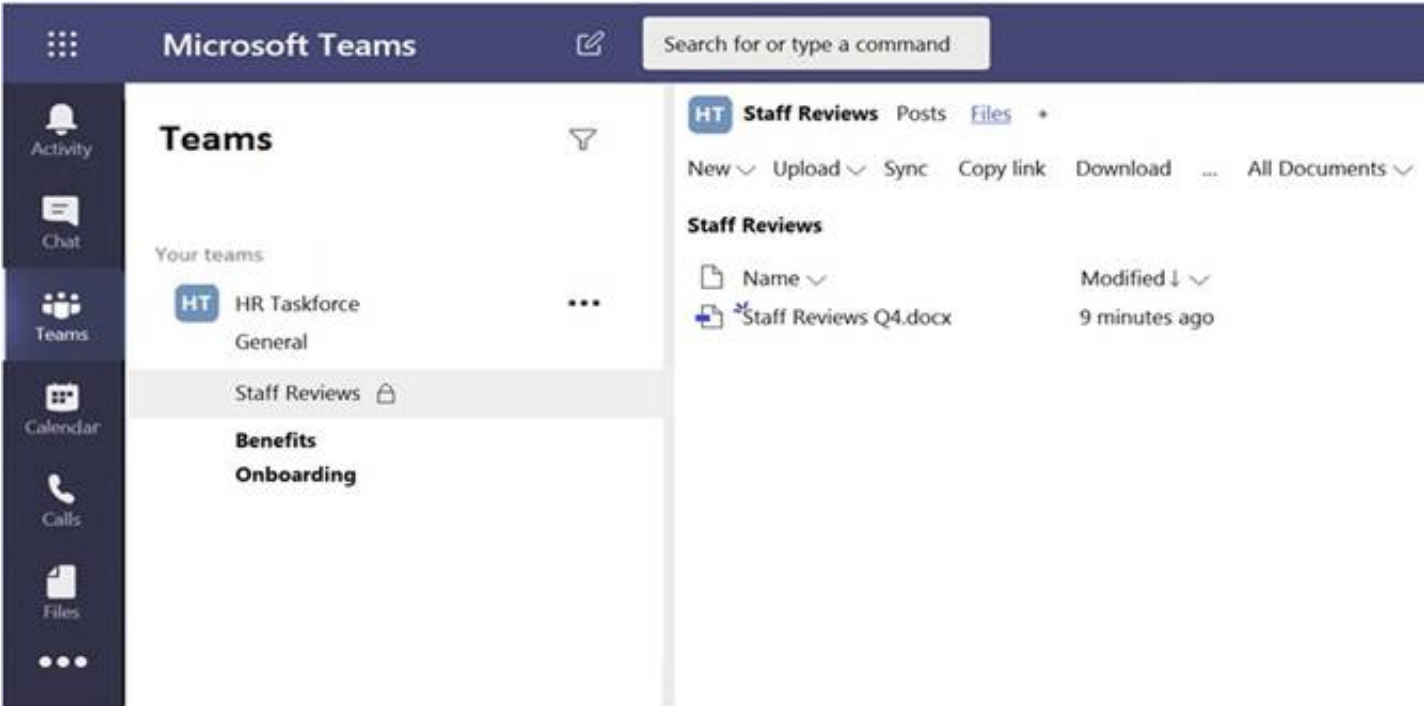
- A. Yes
- B. No

Answer: B

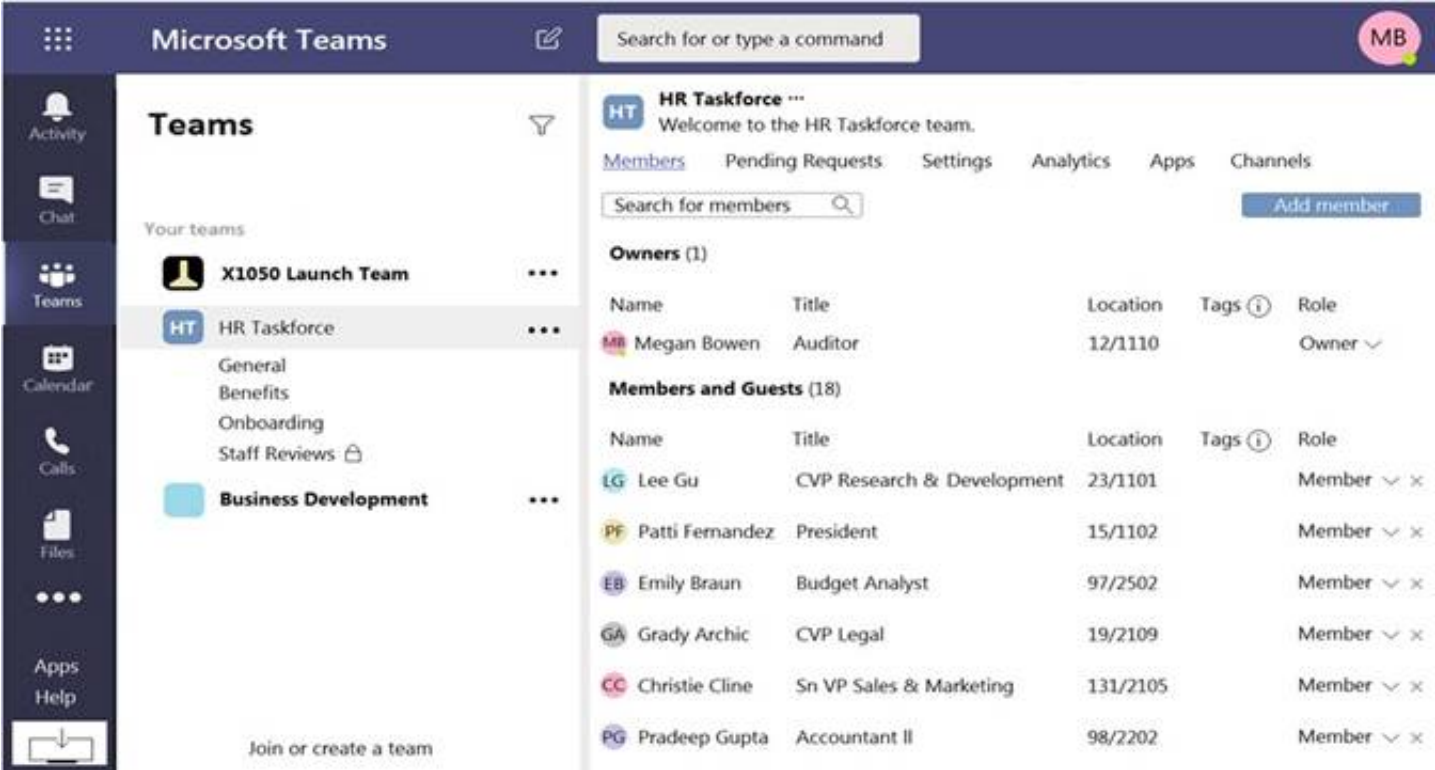
NEW QUESTION 45

HOTSPOT - (Topic 5)

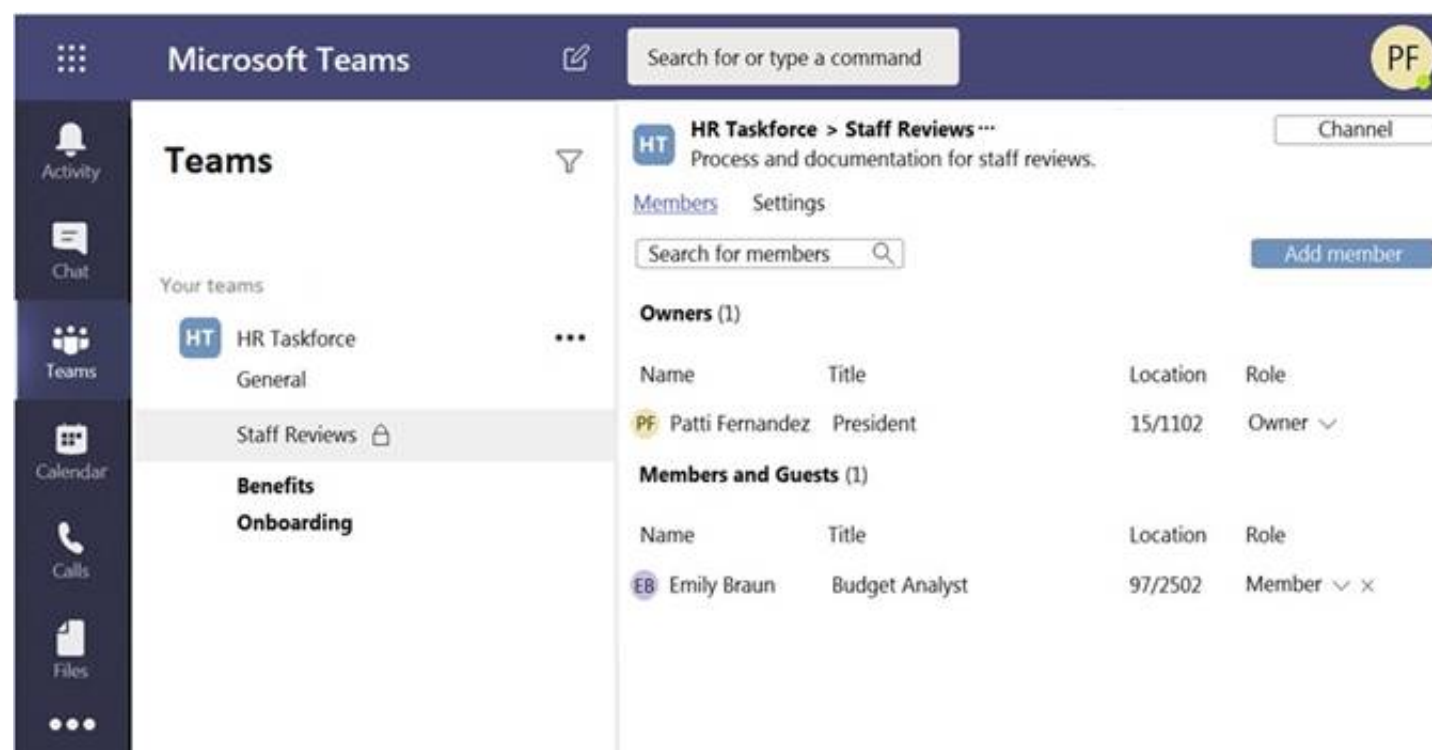
Your company has a Microsoft Teams deployment that contains a team named HR Taskforce. The members of HR Taskforce are shown in the HR Taskforce exhibit.



The members of a private channel named Staff Reviews are shown in the Members exhibit.



The files in the Staff Reviews channel are shown in the Files exhibit.



For each of the following statements, select Yes if the statement is true. Otherwise, select No.
 NOTE: Each correct selection is worth one point

Statements	Yes	No
A user named Megan Bowen can view the name, description, and owner of the Staff Reviews channel.	<input type="radio"/>	<input type="radio"/>
A user named Megan Bowen can open the Staff Reviews Q4.docx file.	<input type="radio"/>	<input type="radio"/>
A user named Megan Bowen can add new members to the Staff Reviews channel.	<input type="radio"/>	<input type="radio"/>

- A. Mastered
- B. Not Mastered

Answer: A

Explanation:

Statements	Yes	No
A user named Megan Bowen can view the name, description, and owner of the Staff Reviews channel.	<input checked="" type="radio"/>	<input type="radio"/>
A user named Megan Bowen can open the Staff Reviews Q4.docx file.	<input type="radio"/>	<input checked="" type="radio"/>
A user named Megan Bowen can add new members to the Staff Reviews channel.	<input type="radio"/>	<input checked="" type="radio"/>

NEW QUESTION 46

- (Topic 5)

Note: This question is part of a series of questions that present the same scenario. Each question in the series contains a unique solution that might meet the stated goals. Some question sets might have more than one correct solution, while others might not have a correct solution.

After you answer a question in this section, you will NOT be able to return to it. As a result, these questions will not appear in the review screen.

Your company has a Microsoft 365 subscription.

You need to prevent temporary employees from using the private chat feature in Microsoft Teams.

Solution: You create an app permission policy and assign the policy to the users. Does this meet the goal?

- A. Yes
- B. No

Answer: B

NEW QUESTION 47

HOTSPOT - (Topic 5)

You have a Microsoft 365 subscription that contains the users shown in the following table.

Name	Role
User1	Teams Administrator
User2	Teams Communications Administrator
User3	None

in Microsoft Teams, User3 creates a new team named Team1.
User1 configures the Groups Expiration settings as shown in the following exhibit.

★

Group lifetime (in days)

180

▼

★

Email contact for groups with no owners

user2@contoso.com

✓

Enable expiration for these Office 365 groups

All

Selected

None

+ Add

↺ Refresh

≡ Columns

	Name	Membership Type
<input type="checkbox"/>	<div>T</div> Team1	Assigned

For each of the following statements, select Yes if the statement is true. Otherwise, select No.
NOTE: Each correct selection is worth one point.

User1 will receive a renewal notification 180 days before Team1 is due to expire.

User2 can renew Team1 before the team expires.

User3 will receive a renewal notification 30 days before Team1 is due to expire.

- A. Mastered
- B. Not Mastered

Answer: A

Explanation:

User1 will receive a renewal notification 180 days before Team1 is due to expire.

✓

User2 can renew Team1 before the team expires.

✓

User3 will receive a renewal notification 30 days before Team1 is due to expire.

✓

NEW QUESTION 48
SIMULATION - (Topic 4)
Task 6

You need to configure a virtual receptionist for your company's main office located at 1 Microsoft Way, Redmond. The solution must meet the following requirements:

- Callers must press 1 for the company directory to lookup by name.
- Callers must press 0 to hear the company address.
- Callers must be offered the same menu at all times.

- A. Mastered
- B. Not Mastered

Answer: A

Explanation:

To configure a virtual receptionist for your company's main office, you can use the Teams admin center to create and assign an auto attendant. An auto attendant is a voice menu system that allows callers to be transferred to an extension or a queue without speaking to an operator or receptionist. Here are the steps to create and assign an auto attendant that meets your requirements:

- ? Sign in to the Teams admin center with your Microsoft 365 username and password.
- ? In the left navigation, go to Voice > Auto attendants.
- ? Click Add (+) to create a new auto attendant.
- ? In the Basics tab, enter a name and an optional description for the auto attendant, such as "Main Office Receptionist".

? Under Phone number, select Assign and then choose a service number from the list or click Add new number to get a new one. A service number is a type of phone number that can handle hundreds of simultaneous calls and is used for services such as audio conferencing, auto attendants, and call queues.

? Click Apply and then Next.

? In the Greeting and menu tab, under Greeting, select Custom and then click Upload audio file to upload a recorded greeting message for the callers, such as “Welcome to Microsoft. Please listen carefully to the following options.”

? Under Menu options, click Add (+) and then select Key press from the drop-down menu.

? In the Key press box, enter 1 and then select Dial by name from the Action drop- down menu. This will allow callers to press 1 for the company directory to lookup by name.

? Click Add (+) again and then select Key press from the drop-down menu.

? In the Key press box, enter 0 and then select Play audio file from the Action drop- down menu. This will allow callers to press 0 to hear the company address.

? Click Upload audio file and then upload a recorded message with the company address, such as “Our main office is located at 1 Microsoft Way, Redmond.”

? Under Menu options, turn on the toggle for Repeat menu until caller hangs up or presses #. This will offer the same menu at all times.

? Click Next.

? In the Business hours tab, under Business hours, select 24/7 from the drop-down menu. This will make the auto attendant available at all times.

? Click Next.

? In the Review tab, review your settings and then click Save.

Now, you have configured a virtual receptionist for your company’s main office that meets your requirements.

NEW QUESTION 50

SIMULATION - (Topic 4)

Task 7

You need to acquire a dedicated Microsoft dial-in bridge number from either 431 or 343 area codes in Canada.

- A. Mastered
- B. Not Mastered

Answer: A

Explanation:

To acquire a dedicated Microsoft dial-in bridge number from either 431 or 343 area codes in Canada, you need to use the Teams admin center to request and assign a service number. A service number is a type of phone number that can handle hundreds of simultaneous calls and is used for services such as audio conferencing, auto attendants, and call queues. Here are the steps to follow:

? Sign in to the Teams admin center with your Microsoft 365 username and password1.

? In the left navigation, go to Voice > Phone numbers.

? Click Add (+) and then select New service numbers.

? In the New service numbers pane, select the country or region as Canada, the number type as Toll or Toll-free, and the location as Manitoba (for 431 area code) or Ontario (for 343 area code).

? Enter the quantity of numbers that you need and then click Next.

? Review your order details and then click Submit request.

? Wait for an email confirmation that your request has been processed. This may take up to 24 hours.

? After you receive the confirmation email, go back to the Teams admin center and click Refresh on the Phone numbers page. You should see the new service numbers that you requested.

? To assign a service number to your audio conferencing bridge, go to Meetings > Conference bridges and then click Edit next to Default toll or toll-free number.

? In the Edit default toll or toll-free number pane, select one of the new service numbers that you acquired from the drop-down menu and then click Apply.

Now, you have acquired and assigned a dedicated Microsoft dial-in bridge number from either 431 or 343 area codes in Canada.

NEW QUESTION 55

SIMULATION - (Topic 4)

Task 2

You need to configure only the Teams meeting invites of Allan DeYoung to first show a dial-in bridge number in Toronto, and then show then a dial-in bridge number in Pans in the body of his invites.

- A. Mastered
- B. Not Mastered

Answer: A

Explanation:

To configure the Teams meeting invites of Allan DeYoung to show a dial-in bridge number in Toronto and then a dial-in bridge number in Paris, you can use the Teams admin center to set the phone numbers included on his invites. Here are the steps to follow:

? Sign in to the Teams admin center with your Microsoft 365 username and password1.

? In the left navigation, go to Users and then select Allan DeYoung from the list of users.

? In the user details page, go to Meetings and then click Edit next to Audio Conferencing.

? In the Audio Conferencing pane, under Phone numbers, select Customized from the drop-down menu.

? In the Customized phone numbers box, enter the phone numbers that you want to include on Allan’s invites, separated by commas. For example, you can enter: +1 416-555-1234 (Toronto), +33 1 55 55 55 55 (Paris)

? Click Save and then Close.

Now, when Allan DeYoung schedules a Teams meeting, his invites will show the Toronto and Paris dial-in bridge numbers in the body of his invites, in the order that you specified.

NEW QUESTION 58

DRAG DROP - (Topic 3)

You need to implement the planned changes for Viva Connections.

Which three actions should you perform in sequence? To answer, move the appropriate actions from the list of actions to the answer area and arrange them in the correct order.

Actions

From the Microsoft Teams admin center, select **Customize store**.

From the Microsoft Teams admin center, select **Setup policies**.

From Org-wide app settings, enable tailored apps.

From the Microsoft Teams admin center, select **Manage apps**.

Select the Viva Connections app, and then select **Customize**.

Modify and apply the app details.

Answer Area

- A. Mastered
- B. Not Mastered

Answer: A

Explanation:

Actions

From the Microsoft Teams admin center, select **Customize store**.

From the Microsoft Teams admin center, select **Setup policies**.

From Org-wide app settings, enable tailored apps.

From the Microsoft Teams admin center, select **Manage apps**.

Select the Viva Connections app, and then select **Customize**.

Modify and apply the app details.

Answer Area

From the Microsoft Teams admin center, select **Manage apps**.

Select the Viva Connections app, and then select **Customize**.

Modify and apply the app details.

NEW QUESTION 60

- (Topic 2)

You need to configure Microsoft Teams to meet the collaboration and meeting requirements.

Which two actions should you perform from the Microsoft Teams admin center? Each correct answer presents part of the solution.

NOTE: Each correct selection is worth one point.

- A. Modify the Meeting settings.
- B. Create a teams policy.
- C. Create a meeting policy.
- D. Create a live events policy.
- E. Modify the Teams settings.

Answer: AC

Explanation:

<http://blog.schertz.name/2019/07/customizing-microsoft-teams-meeting-invitations/> <https://docs.microsoft.com/en-us/microsoftteams/cloud-recording>

NEW QUESTION 61

HOTSPOT - (Topic 3)

You need to implement the planned changes for the marketing department and the project management department. The solution must meet the technical requirements.

Which type of channel should you use for each department? To answer, select the appropriate options in the answer area.

NOTE: Each correct selection is worth one point

Answer Area

Marketing:

Shared

Private

Shared

Standard

Project management:

Private

Private

Shared

Standard

- A. Mastered
- B. Not Mastered

Answer: A

Explanation:

Answer Area



NEW QUESTION 63

DRAG DROP - (Topic 1)

You need to recommend a voice topology for the departments. The topology must meet the calling requirements and the security requirements. What should you recommend for each department? To answer, select the appropriate options in the answer area.
NOTE: Each correct selection is worth one point.

Voice Topologies

Calling Plans

Direct Routing

On-premises call handling

Skype for Business Cloud Connector Edition

Answer Area

HR:

Voice topology

Sales:

Voice topology

R&D:

Voice topology

- A. Mastered
- B. Not Mastered

Answer: A

Explanation:

Voice Topologies

Calling Plans

Direct Routing

On-premises call handling

Skype for Business Cloud Connector Edition

Answer Area

HR:

Direct Routing

Sales:

Calling Plans

R&D:

Skype for Business Cloud Connector Edition

NEW QUESTION 66

- (Topic 1)

You need to configure the environment to meet the security requirements for team names. What should you do?

- A. From the Security & Compliance admin center, create a sensitivity label and a sensitivity policy.
- B. From the Microsoft Teams admin center, modify the Teams setting policies.
- C. From the Azure Active Directory admin center, upload a blocked word list for the group naming policy.

Answer: C

Explanation:

Reference:
<https://docs.microsoft.com/en-us/azure/active-directory/users-groups-roles/groups-naming-policy>

NEW QUESTION 70

- (Topic 5)

Your company has a Microsoft 365 subscription. The company has a group named Sales.

You need to configure Microsoft Teams for the Sales group. The solution must meet the following requirements:

? Ensure that only the Activity, Shifts, Chat, and Calling apps are always visible in the app bar of the Microsoft Teams client.

? Prevent only the users in the company's sales department from adding other apps to Microsoft Teams.

Which two actions should you perform? Each correct answer presents part of the solution.

NOTE: Each correct selection is worth one point.

- A. Modify the global app setup policy.
- B. Modify the global app permission policy.
- C. Create an app setup policy.
- D. Modify the org-wide Teams settings.
- E. Create an app permission policy.

Answer: CE

Explanation:

Reference:

<https://docs.microsoft.com/en-us/microsoftteams/teams-app-permission-policies>

NEW QUESTION 73

- (Topic 5)

Your company uses Teams.

You have a team named Team1.

You need to prevent guest users from accessing files in Team1. The solution must NOT affect external collaboration with any other teams. What should you do?

- A. From the SharePoint admin center, edit the External sharing settings for the associated site.
- B. From the Microsoft Entra admin center, configure the External collaboration settings for guest users.
- C. From the Microsoft Entra admin center, create a Conditional Access policy.
- D. From the Microsoft Teams admin center, set external access to Block all external domains.
- E. From the Microsoft Teams admin center, set Allow guest access in Teams to Off.

Answer: A

NEW QUESTION 78

- (Topic 5)

You plan to implement a pilot project on Phone System for 100 users. The pilot project will use a Microsoft Calling Plan.

You need to ensure that the users can establish calls to the PSTN. Which cmdlets should you run?

- A. Set-AzureADUserLicense, Set-CSUser, and Set-AzureADUser
- B. Grant-CsOnlineVoiceRoutingPolicy, Set-CsOnlineVoiceUser, and Set-CSUser
- C. Set-AzureADUser, Grant-CsOnlineVoiceRoutingPolicy, and Set-CsOnlineVoiceUser
- D. Set-AzureADUserLicense, Set-CsOnlineVoiceUser, and Set-CSUser

Answer: D

Explanation:

A Microsoft Calling plan requires an additional license. The three cmdlets in this answer assign a phone system license to the user, assigns a phone number to the user and enables the user for Enterprise Voice.

Reference:

<https://docs.microsoft.com/en-us/microsoftteams/calling-plans-for-office-365> <https://docs.microsoft.com/en-us/microsoftteams/set-up-calling-plans>

NEW QUESTION 82

- (Topic 5)

You have a Microsoft Office 365 subscription.

You discover that apps from a third-party publisher have security issues. You need to block all apps from the publisher.

What should you use in the Microsoft Teams admin center?

- A. Org-wide app settings
- B. Policy packages
- C. Permission policies
- D. Manage apps

Answer: D

Explanation:

Reference:

<https://docs.microsoft.com/en-us/microsoftteams/manage-apps>

NEW QUESTION 83

DRAG DROP - (Topic 5)

You have a Microsoft Office 365 subscription named contoso.com.

You need to create the Microsoft Teams teams shown in the following table.

Name	Requirement
Sales	Users can join only once they are approved.
General	All contoso.com users are included automatically.
Projects	Users can join without approval.

What should you configure each team? To answer, drag the appropriate team types to the correct teams. Each team type may be used once, more than once, or not at all. You may need to drag the split bar between panes or scroll to view content.
NOTE: Each correct selection is worth one point.

Team Types

Org-wide

Private

Public

Answer Area

Sales:

Team type

General:

Team type

Project:

Team type

- A. Mastered
- B. Not Mastered

Answer: A

Explanation:

Team Types

Org-wide

Private

Public

Answer Area

Sales:

Private

General:

Org-wide

Project:

Public

NEW QUESTION 87

- (Topic 5)
You have a Microsoft Office 365 subscription that contains a user named User1.
You need to ensure that User1 can view Analytics & reports in the Microsoft Teams admin center. The solution must use the principle of least privilege.
Which role should you assign to User1?

- A. Teams Communication support specialist
- B. Skype for Business administrator
- C. Global reader
- D. Global administrator

Answer: B

Explanation:

Reference:
<https://docs.microsoft.com/en-us/microsoftteams/get-started-with-teams-monitor-usage-and-feedback>

NEW QUESTION 88

- (Topic 5)
You are a Microsoft Teams administrator for your company.
All the teams used by the company's legal department must meet the following compliance requirements:
? Each team must expire 365 days after it is created.
? All team content must be deleted when the team expires.
? An administrator must be able to restore deleted team content for 30 days. What should you do?

- A. From the Microsoft Teams admin center, modify the teams policy.
- B. From PowerShell, run the New-AzureADMSGrouplifecyclePolicy cmdlet.
- C. From the Security & Compliance admin center, create a data loss prevention (DLP) policy.
- D. From the Microsoft 365 admin center, modify the Office 365 group settings.

Answer: B

Explanation:

Reference:

<https://docs.microsoft.com/en-us/azure/active-directory/users-groups-roles/groups-lifecycle> <https://docs.microsoft.com/en-us/powershell/module/azuread/new-azureadmsgrouplifecyclepolicy?view=azureadps-2.0>

NEW QUESTION 90

- (Topic 5)

Your company has a Microsoft Office 365 subscription.

The company has the departments and teams shown in the following table.

Department name	Team name
Sales	Teams1
Finance	Teams2
HR	Teams3

You need to recommend which policies must be created to meet the following requirements:

? Users in the HR department must be prevented from sending messages marked as Urgent.

? Users in the finance department must be able to send messages marked as Urgent.

? Users in the finance department must be able to delete sent messages.

? The solution must only affect the HR department users and the finance department users.

What is the minimum number of policies you should recommend?

- A. two messaging policies
- B. one messaging policy and one permission policy
- C. one permission policy only
- D. two permission policies
- E. one messaging policy only

Answer: A

NEW QUESTION 92

HOTSPOT - (Topic 5)

Your company uses Microsoft Teams.

You have a meeting policy named Policy1 that is assigned to a group named Sales. You need to ensure that all the meetings recorded by the Sales group are stored indefinitely.

How should you complete the PowerShell cmdlet? To answer, select the appropriate options in the answer area.

NOTE: Each correct selection is worth one point.

Answer Area



- A. Mastered
- B. Not Mastered

Answer: A

Explanation:

Answer Area



NEW QUESTION 97

- (Topic 5)

Your company is upgrading from Microsoft Skype for Business Online to Microsoft Teams.

The company's Microsoft Teams upgrade policy is set to Islands coexistence mode. The company plans to maintain the coexistence mode for several months. Several users report that they receive email messages about missed chat conversations. You need to recommend a solution to ensure that all the users receive chat messages.

Which two actions should you recommend? Each correct answer presents part of the solution.

NOTE: Each correct selection is worth one point.

- A. Install the Microsoft Teams clients on all the computers that run the Skype for Business client
- B. Instruct the users to sign in to both client applications.
- C. Instruct the users to modify the permissions in the Microsoft Teams client.
- D. Modify the global app setup policy.
- E. Modify the global app permission policy.
- F. Install the Skype for Business client on all the computers that run the Microsoft Teams client

G. Instruct the users to sign in to both client applications.

Answer: AE

Explanation:

Reference:
<https://docs.microsoft.com/en-us/microsoftteams/teams-and-skypeforbusiness-coexistence-and-interoperability>

NEW QUESTION 102

- (Topic 5)
You have a Microsoft 365 subscription that uses Microsoft Teams and 300 Microsoft Teams-certified IP phones. You need to locate, group, and filter the IP phones based on keywords. What should you use?

- A. device tags
- B. reporting labels
- C. a configuration profile
- D. a label policy

Answer: A

Explanation:

Reference:
<https://docs.microsoft.com/en-us/microsoftteams/devices/manage-device-tags>

NEW QUESTION 103

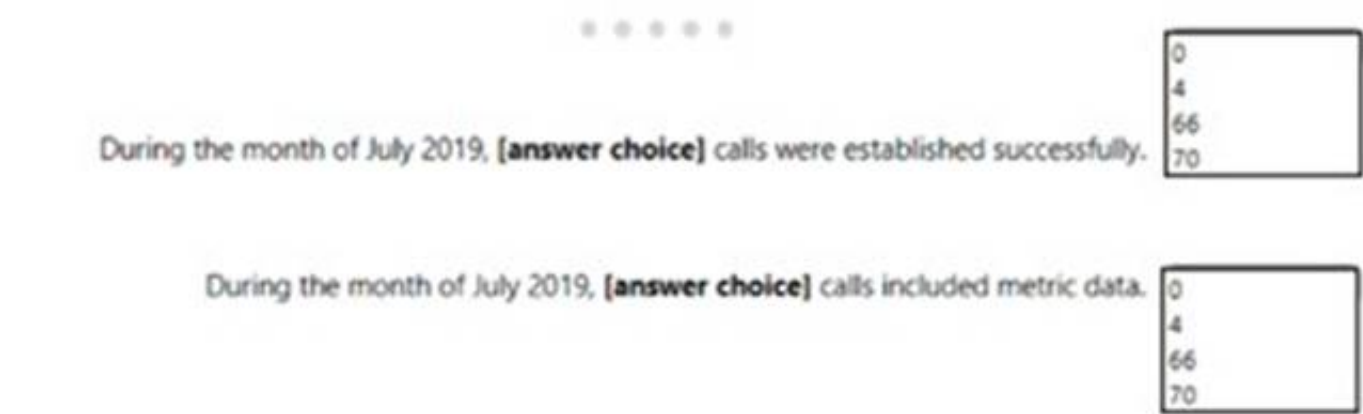
- (Topic 5)
Your company uses Teams. A user named User1 cannot invite guest users to Teams. What should you recommend using to identify the cause of the issue?

- A. Microsoft Teams Network Assessment Tool
- B. Teams advisor
- C. Microsoft 365 network connectivity test tool
- D. self-help diagnostics

Answer: D

NEW QUESTION 107

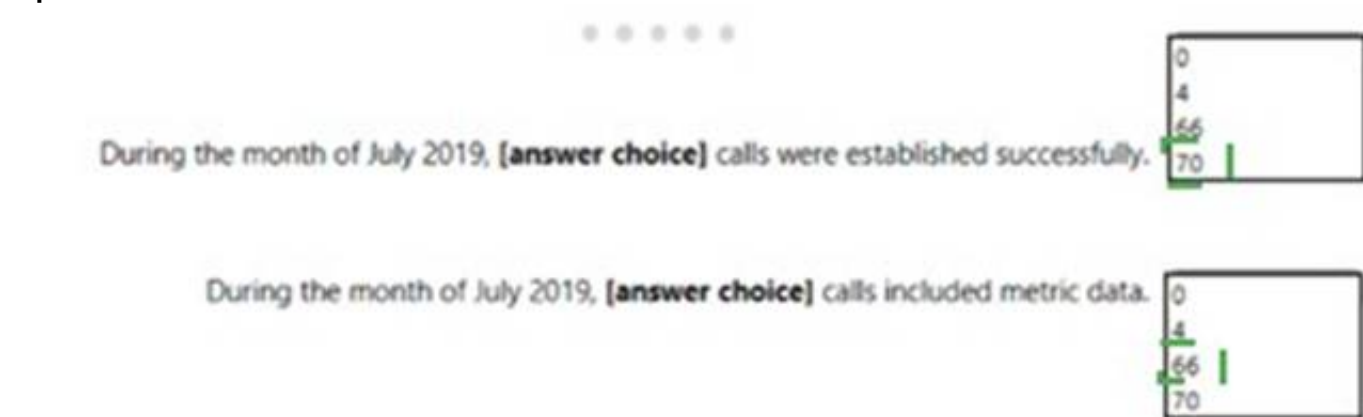
HOTSPOT - (Topic 5)
You open the Microsoft Call Quality Dashboard as shown in the following exhibit. All Audio Streams
This Report shows the monthly audio streams count, poor count, and poor ratio for the last 7 months. There are no filters applied so the data reflects all the call data that was captured by the Service. Audio calls made over wireless and external networks can cause poor call rates to go up.



- A. Mastered
- B. Not Mastered

Answer: A

Explanation:



NEW QUESTION 112

- (Topic 5)

You have a Microsoft Office 365 subscription that contains a user named User1.

You need to ensure that User1 can view Usage reports in the Microsoft Teams admin center. The solution must use the principle of least privilege.

Which role should you assign to User1?

- A. Global Administrator
- B. Usage Summary Reports Reader
- C. Helpdesk Administrator
- D. Skype for Business administrator

Answer: B

Explanation:

According to the Microsoft Teams documentation¹, to access the usage reports in the Teams admin center, you must be assigned one of the following roles:

? Global administrator

? Teams or Skype for Business administrator

? Global reader (only tenant-level aggregate and no per-user or team data)

To learn more about Teams admin roles and which reports each admin role can access, see Use Teams administrator roles to manage Teams².

Therefore, based on this information, the correct answer is C. Teams Administrator. This role has the minimum privilege required to view usage reports in the Teams admin center.

NEW QUESTION 113

- (Topic 5)

Your company uses Teams Calling Plans.

When a user places a Teams call to an ambulance service, you need to ensure that a notification is also sent to the main receptionist of the company.

What should you configure?

- A. a voice routing policy
- B. an emergency calling policy
- C. a calling policy
- D. a caller ID policy

Answer: B

Explanation:

you should configure an emergency calling policy to define what happens when a Teams user in your organization makes an emergency call. You can set who to notify and how they are notified when a user who is assigned the policy calls emergency services. For example, you can configure policy settings to automatically notify your organization's main receptionist and have them listen in emergency calls.

To create a custom emergency calling policy, you can follow these steps¹:

? In the left navigation of the Microsoft Teams admin center, go to Voice > Emergency policies, and then click the Calling policies tab.

? Click Add.

? Enter a name and description for the policy.

? Set how you want to notify people in your organization, typically the main receptionist, when an emergency call is made. To do this, under Notification mode, select one of the following:

? Set the Emergency service disclaimer to show a banner to remind your end users to confirm their emergency location.

NEW QUESTION 114

- (Topic 5)

You manage the Microsoft Teams environment for your company. Several users report poor call quality.

You need to ensure that a user named Admin5 can review the call quality metrics of all the users at the company. The solution must use the principle of least privilege. Which role should you assign to Admin5?

- A. Teams Service Administrator
- B. Teams Communications Support Engineer
- C. Teams Communications Support Specialist
- D. Teams Communications Administrator

Answer: B

Explanation:

Reference:

<https://docs.microsoft.com/en-us/microsoftteams/using-admin-roles>

NEW QUESTION 118

HOTSPOT - (Topic 5)

You have a Microsoft 365 E5 subscription that uses Microsoft Teams and a hybrid deployment of Microsoft Skype for Business Server.

Coexistence mode in Microsoft Teams is set to Islands.

Coexistence mode is configured for three users named User1, User2, and User3 as shown in the following table.

User	Coexistence mode
User1	Use Org-wide settings
User2	Skype for Business with Teams collaboration
User3	Teams only

The Skype for Business user accounts are homed as shown in the following table.

User	Homed
User1	On-premises
User2	Online
User3	Online

For each of the following statements, select Yes if the statement is true. Otherwise, select No.
NOTE: Each correct selection is worth one point.

Statements	Yes	No
User3 must use the Microsoft Teams client to initiate a new chat with User1.	<input type="radio"/>	<input type="radio"/>
User1 must use the Microsoft Teams client to initiate a new chat with User2.	<input type="radio"/>	<input type="radio"/>
User2 must use the Skype for Business client to initiate a new chat with User1 and User3.	<input type="radio"/>	<input type="radio"/>

- A. Mastered
- B. Not Mastered

Answer: A

Explanation:

Statements	Yes	No
User3 must use the Microsoft Teams client to initiate a new chat with User1.	<input checked="" type="radio"/>	<input type="radio"/>
User1 must use the Microsoft Teams client to initiate a new chat with User2.	<input type="radio"/>	<input checked="" type="radio"/>
User2 must use the Skype for Business client to initiate a new chat with User1 and User3.	<input checked="" type="radio"/>	<input type="radio"/>

NEW QUESTION 123

DRAG DROP - (Topic 5)

You have a Microsoft 365 subscription that uses Microsoft Teams. You need to identify the following:
The number of guest users on a team named Customer Support. Users that use the Teams mobile app for iOS.
Which reports should you run? To answer, drag the appropriate reports to the correct requirements. Each report may be used once, more than once, or not at all.
drag the split bar between panes or scroll to view content.

Reports

Apps usage

Information protection licence

Teams device usage

Teams live event usage

Answer Area

Users that use the Teams mobile app for iOS:

Report

Number of guest users on the Customer Support team:

Report

- A. Mastered
- B. Not Mastered

Answer: A

Explanation:

App usage Team Device usage

NEW QUESTION 128

DRAG DROP - (Topic 5)

Your company uses Microsoft Teams and has an auto attendant named AA1. A user named User1 has a phone number of 613-555-1234.
You need to assign the phone number to AA1.
Which three actions should you perform in sequence in the Microsoft Teams admin center? To answer, move the appropriate actions from the list of actions to the answer area and arrange them in the correct order.

Actions

Order a new phone number.

Release the phone number.

Unassign the phone number from User1.

Create a new case and set Case type to **Inventory type change – change inventory type of my phone number(s).**

Assign the phone number to AA1.

Answer Area

>

<

&u2191

⇊

- A. Mastered
- B. Not Mastered

Answer: A

Explanation:

Actions

Order a new phone number.

Release the phone number.

Unassign the phone number from User1.

Create a new case and set Case type to **Inventory type change – change inventory type of my phone number(s).**

Assign the phone number to AA1.

Answer Area

>

<

Unassign the phone number from User1.

Create a new case and set Case type to **Inventory type change – change inventory type of my phone number(s).**

Assign the phone number to AA1.

&u2191

⇊

NEW QUESTION 131

- (Topic 5)

Note: This question is part of a series of questions that present the same scenario. Each question in the series contains a unique solution that might meet the stated goals. Some question sets might have more than one correct solution, while others might not have a correct solution.

After you answer a question in this section, you will NOT be able to return to it As a result, these questions will not appear in the review screen.

You have a Microsoft 365 subscription that contains several Microsoft SharePoint Online sites.

You need to ensure that the content stored in a SharePoint modern team site named Sales is available from Microsoft Teams. The solution must ensure that when a new channel is added to a team, a folder for the channel is created in the Sales site.

Solution: From the Sales site, you use the Add Microsoft Teams link. Does this meet the goal?

- A. Yes
- B. No

Answer: B

NEW QUESTION 132

HOTSPOT - (Topic 5)

Your company has a Microsoft Office 365 subscription.

The company has offices in France, United States, and Belgium.

You plan to implement Phone System to meet the following requirements:

? The office in Belgium must use SIP trunks from the current telecommunication provider.

? The office in France must integrate the phone number range and an on-premises IP-PBX.

? The office in the United States must minimize the infrastructure required to deploy the planned Phone System.

You need to recommend which PSTN connectivity meets the requirements.

Which PSTN connectivity should you recommend for each office? To answer, select the appropriate options in the answer area.

NOTE: Each correct selection is worth one point.

France:

▼

Calling Plans

Direct Routing

Belgium:

▼

Calling Plans

Direct Routing

United States:

▼

Calling Plans

Direct Routing

- A. Mastered
- B. Not Mastered

Answer: A

Explanation:

France:

▼

Calling Plans

Direct Routing

Belgium:

▼

Calling Plans

Direct Routing

United States:

▼

Calling Plans

Direct Routing

NEW QUESTION 135

HOTSPOT - (Topic 5)

You have a Microsoft 365 E5 subscription that uses Microsoft Teams. The subscription contains a group named Group 1. You need to prevent the members of Group1 from recording meetings. How should you complete the PowerShell script? To answer, select the appropriate options in the answer area. Each correct selection is worth one point.

▼

Grant-CsTeamsAppPermissionPolicy

Set-CsTeamsMeetingConfiguration

Set-CsTeamsMeetingPolicy

Set-CsTeamsMessagingPolicy

-Identity Group1

▼

AllowCloudRecording

AllowCloudRecordingForCalls

AllowIPVideo

ChannelRecordingDownload

\$false

- A. Mastered
- B. Not Mastered

Answer: A

Explanation:



NEW QUESTION 139

- (Topic 5)
Your company has a Microsoft Office 365 subscription.
The company has the departments and teams shown in the following table.

Department name	Team name
Human resources	HR
Research and development	R&D
Events	Events

You need to ensure that only the following apps appear in the app bar of the Microsoft Teams client for only the events department:
? Activity
? Shifts
? Chat
What should you do first?

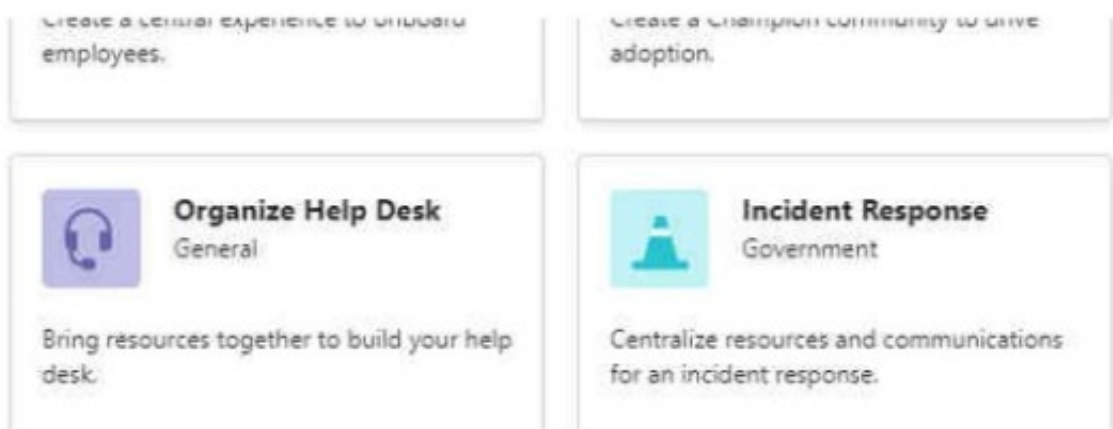
- A. Create a custom app permission policy.
- B. Modify the global app permission policy.
- C. Create a custom app setup policy.
- D. Modify the global app setup policy.

Answer: C

Explanation:
Reference:
<https://docs.microsoft.com/en-us/microsoftteams/teams-app-setup-policies#assign-a-custom-app-setup-policyto-users>

NEW QUESTION 143

- (Topic 5)
Exhibit:



You need to ensure that the user sees only the Manage a Project template. What should you do?
A. From PowerShell, modify the Teams policies.
B. From the Microsoft Teams admin centre
C. modify the team templates.
D. From the Microsoft Teams admin center, modify the templates policies.
E. From PowerShell, modify the team templates.

Answer: C

NEW QUESTION 147

HOTSPOT - (Topic 5)
HOTSPOT
You have a Microsoft 365 subscription that uses Microsoft Teams.
You need to configure phone settings to meet the following requirements:
? Put a call on hold, and then transfer the call.
? Hide the calling phone number of outgoing calls.
What should you configure for each requirement? To answer, select the appropriate options in the answer area.
NOTE: Each correct selection is worth one point.

Put a call on hold, and then transfer the call:

▼

Call queues

Call forwarding

Call park policies

Voice routing policies

Hide the calling phone number of outgoing calls:

▼

Call forwarding

Caller ID policies

Voice routing policies

Microsoft Phone System Direct Routing

- A. Mastered
- B. Not Mastered

Answer: A

Explanation:

Put a call on hold, and then transfer the call:

▼

Call queues

Call forwarding

Call park policies

Voice routing policies

Hide the calling phone number of outgoing calls:

▼

Call forwarding

Caller ID policies

Voice routing policies

Microsoft Phone System Direct Routing

NEW QUESTION 151

- (Topic 5)
 You network contains an on-premises Active Directory domain that syncs to a Microsoft 365 subscription.
 From the Microsoft Teams client, you create a new team named Sales.
 You need to ensure that the team includes all users in the company’s sales department. The solution must ensure that the new employees hired for the sales department are added automatically to the team.
 Which tool should you use to configure the membership of the Sales group?

- A. Active Directory Users and Computers
- B. the Microsoft 365 admin center
- C. Azure AD Connect
- D. the Azure Active Directory admin center

Answer: D

Explanation:

Reference:
<https://docs.microsoft.com/en-us/microsoftteams/dynamic-memberships>
<https://docs.microsoft.com/en-us/azure/active-directory/users-groups-roles/groups-change- type>

NEW QUESTION 154

- (Topic 5)
 Your company uses Microsoft Teams.
 The company has the departments and teams shown in the following table.

Department name	Team name
Sales	Team1
Research and Development	Team2
Finance	Team3

You need to recommend a solution to prevent the users in each department from inviting users from other departments to their team.
 What should you include in the recommendation?

- A. app permission policies
- B. Azure Information Protection

- C. supervision policies
- D. information barrier policies

Answer: D

NEW QUESTION 156

.....

Thank You for Trying Our Product

We offer two products:

1st - We have Practice Tests Software with Actual Exam Questions

2nd - Questions and Answers in PDF Format

MS-700 Practice Exam Features:

- * MS-700 Questions and Answers Updated Frequently
- * MS-700 Practice Questions Verified by Expert Senior Certified Staff
- * MS-700 Most Realistic Questions that Guarantee you a Pass on Your First Try
- * MS-700 Practice Test Questions in Multiple Choice Formats and Updates for 1 Year

100% Actual & Verified — Instant Download, Please Click
[Order The MS-700 Practice Test Here](#)