



Cisco

Exam Questions 300-510

Implementing Cisco Service Provider Advanced Routing Solutions (SPRI)

About Exambible

[Your Partner of IT Exam](#)

Found in 1998

Exambible is a company specialized on providing high quality IT exam practice study materials, especially Cisco CCNA, CCDA, CCNP, CCIE, Checkpoint CCSE, CompTIA A+, Network+ certification practice exams and so on. We guarantee that the candidates will not only pass any IT exam at the first attempt but also get profound understanding about the certificates they have got. There are so many alike companies in this industry, however, Exambible has its unique advantages that other companies could not achieve.

Our Advances

* 99.9% Uptime

All examinations will be up to date.

* 24/7 Quality Support

We will provide service round the clock.

* 100% Pass Rate

Our guarantee that you will pass the exam.

* Unique Gurantee

If you do not pass the exam at the first time, we will not only arrange FULL REFUND for you, but also provide you another exam of your claim, ABSOLUTELY FREE!

NEW QUESTION 1

```
RP/0/0/CPU0:XR1#show run

route-policy AGGRO
  if destination in (10.0.0.0/8 ge 8 le 25) then
    set community (10:825)
  endif
  if destination in (10.2.0.0/24) then
    drop
  endif
  if destination in (10.1.0.0/24) then
    suppress-route
  endif
end-policy
!
!
router bgp 1
  bgp router-id 192.168.0.7
  address-family ipv4 unicast
    aggregate-address 10.0.0.0/8 route-policy AGGRO

RP/0/0/CPU0:XR1#
```

Refer to the exhibit. A network operator is working to filter routes from being advertised that are covered under an aggregate announcement. The receiving router of the aggregate announcement block is still getting some of the more specific routes plus the aggregate. Which configuration change ensures that only the aggregate is announced now and in the future if other networks are to be added?

- A. Configure the summary-only keyword on the aggregate command
- B. Set each specific route in the AGGRO policy to drop instead of suppress-route
- C. Filter the routes on the receiving router
- D. Set each specific route in the AGGRO policy to remove instead of suppress-route

Answer: A

NEW QUESTION 2

Which task is performed when troubleshooting LDP?

- A. Execute the ping utility to generate information about the MAC addresses used along the path
- B. Verify that MPLS is disabled globally and enabled on the necessary interfaces in a per-interface basis
- C. Execute the traceroute utility to generate information about the labels used along the path
- D. Verify that Cisco Express Forwarding has been disabled on the network

Answer: C

NEW QUESTION 3

```
Router 1:

interface TenGigE0/1
  point-to-point
  address-family ipv4 unicast
    fast-reroute per-prefix
    Fast-reroute per-prefix ti-lfa

R1#show isis fast-reroute 172.16.200.9/32

L2 172.16.200.9/32 [30/115]
    via 192.168.20.1, TenGigE0/1, R2, SRGB Base: 16000, Weight: 0
    FRR backup via 192.168.30.1, TenGigE0/2, R3, SRGB Base: 16000,
    Weight: 0, Metric 40
```

Refer to the exhibit. Router 1 is connected to router 2 on interface TenGigE0/1. Which interface provides the alternate path to 172.16.200.9/32 when the link between router 1 and router 2 goes down?

- A. TenGigE0/1 interface provides the alternate path
- B. A backup path must be statically installed
- C. TenGigE0/2 interface provides the alternate path
- D. A primary path must be manually installed

Answer: C

NEW QUESTION 4

DRAG DROP

An engineer is troubleshooting end-to-end customer traffic across an MPLS VPN service provider network. Which tasks should the engineer use to solve the routing issues? Drag and drop the table types from the left onto the most useful troubleshooting tasks/router types on the right. (Not all options are used.) Select and Place:

- A. Mastered
- B. Not Mastered

Answer: A

NEW QUESTION 5

You have configured MSDP peering between two autonomous systems that pass traffic between two sites, but the peering has failed to come up. Which task do you perform to begin troubleshooting the problem?

- A. Verify that multicast has been disabled globally
- B. Verify that PIM-DM is configured on the source interface
- C. Verify that both source interfaces are reachable from both peers
- D. Verify that the two MSDP peers allow asymmetric routing

Answer: C

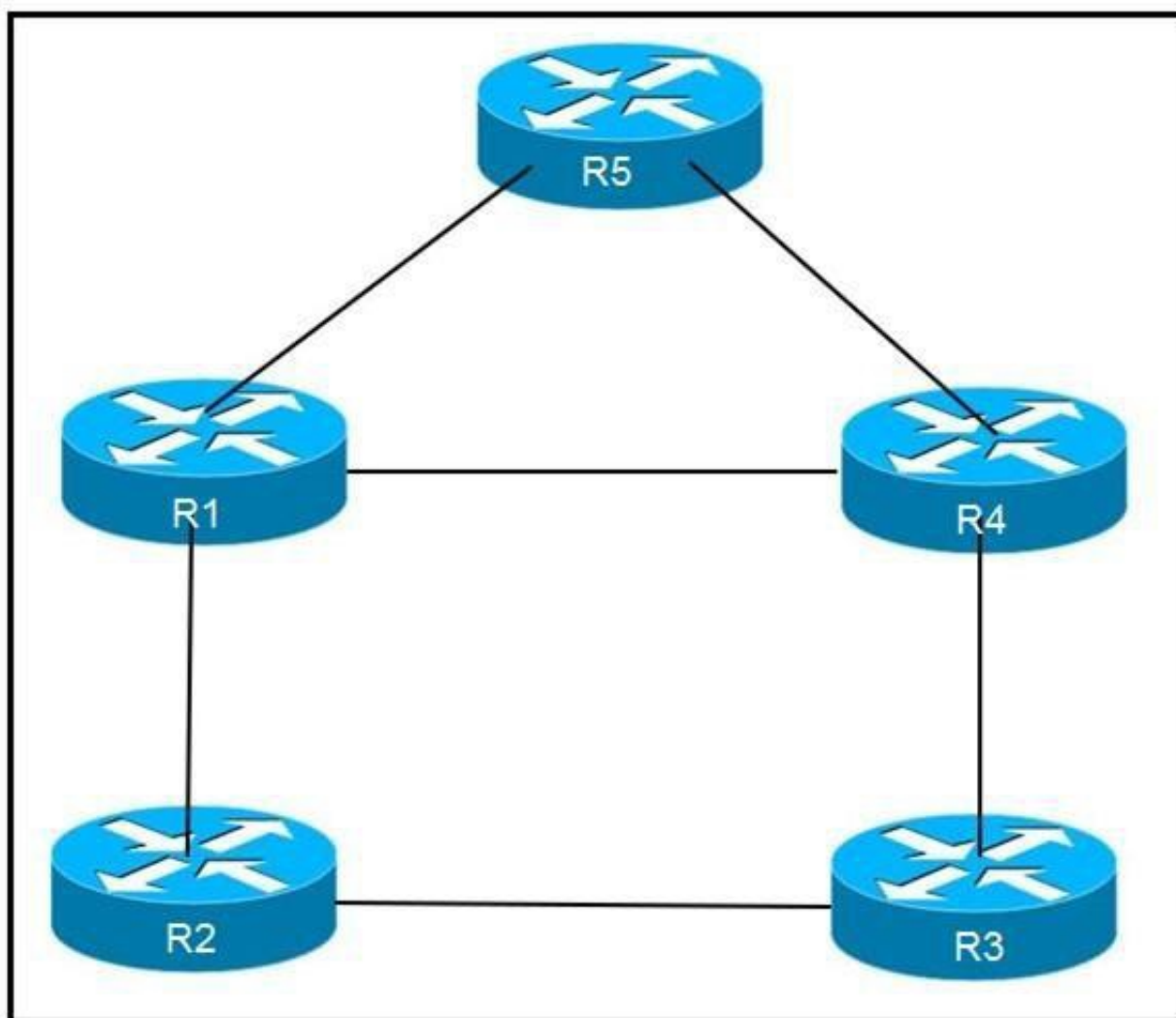
NEW QUESTION 6

For which reason do you deploy BGP confederations within a BGP transit backbone?

- A. to support a larger number of eBGP peer sessions
- B. to increase the number of routes that can be redistributed between the running IGP and BGP
- C. to reduce the number of eBGP routes that must be shared between autonomous systems
- D. to reduce the number of iBGP peering sessions

Answer: D

NEW QUESTION 7



Refer to the exhibit. An engineer is addressing an IS-IS design issue which is running within the topology. All links are running on FastEthernet, except the link between R5 and R4, which is Gigabit Ethernet. Which statement about the design is true?

- A. R4 prefer to reach R5 using R1 as the next hop
- B. All links have equal cost if the default metric is used
- C. R5 prefers to use R4 as the next hop for all routes
- D. R1 prefer to use R5 as the next hop to reach R4

Answer: B

NEW QUESTION 8

You have configured routing policies on a Cisco IOS XR device with routing policy language. Which two statements about the routing policies are true? (Choose

two.)

- A. The routing policies affect BGP-related routes only.
- B. If you make edits to an existing routing policy without pasting the full policy into the CLI, the previous policy is overwritten.
- C. You can change an existing routing policy by editing individual statements.
- D. The routing policies are implemented in a sequential manner.
- E. The routing policies are implemented using route maps.

Answer: CD

NEW QUESTION 9

Refer to the exhibit. Which task must you perform on interface g1/0/0 to complete the SSM implementation?

- A. configure OSPFv3
- B. enable CDP
- C. disable IGMP
- D. configure IGMPv3

Answer: D

NEW QUESTION 10

Which output from the show isis interface command helps an engineer troubleshoot an IS-IS adjacency problem on a Cisco IOS-XR platform?

- A. metric
- B. priority
- C. circuit type
- D. hello interval

Answer: D

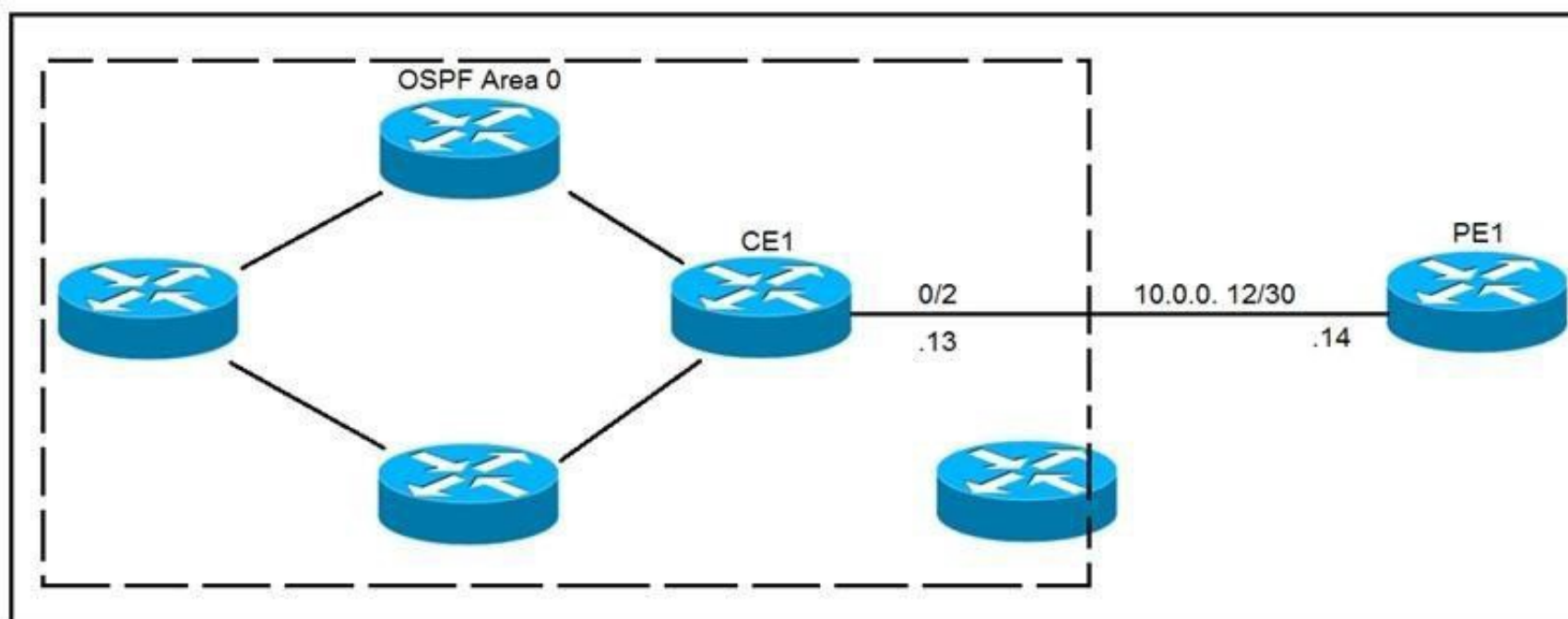
NEW QUESTION 10

Which statement about BFD on Cisco IOS XR Software is true?

- A. Cisco IOS XR router must use LDP to route back to the Cisco IOS router to establish the peer relationship.
- B. Cisco IOS XR Software does not support BFD multihop for IPv4.
- C. Cisco IOS XR router must use dynamic routing or a static route back to the Cisco IOS router to establish the peer relationship.
- D. BFD is not compatible between Cisco IOS XR and Cisco IOS Software.

Answer: C

NEW QUESTION 11



Refer to the exhibit. CE1 is the gateway router into the provider network via PE1. A network operator must inject a default route into OSPF area 0. All devices inside area 0 must be able to reach PE1. Which configuration achieves this goal?

- A.

```
#CE1
router ospf 1
default-information originate always
```
- B.

```
#CE1
ip route 0.0.0.0 0.0.0.0 GigabitEthernet0/2 10.0.0.14
!
router ospf 1
default-information originate
```

Answer: B

NEW QUESTION 13

Which two characteristics unique to SSM when compared to ASM are true? (Choose two.)

- A. It uses SPT switchover
- B. It uses (*,G) exclusively
- C. It uses IGMPv3
- D. It uses RP
- E. It uses (S,G) exclusively

Answer: CE

NEW QUESTION 16

.....

Relate Links

100% Pass Your 300-510 Exam with ExamBible Prep Materials

<https://www.exambible.com/300-510-exam/>

Contact us

We are proud of our high-quality customer service, which serves you around the clock 24/7.

Viste - <https://www.exambible.com/>