



Cisco

Exam Questions 350-601

Implementing and Operating Cisco Data Center Core Technologies

NEW QUESTION 1

A customer needs a tool to take advantage of the CI/CD model to streamline its operation and optimize cost. The customer wants to integrate the solution with the cisco products it currently it currently uses, Including Cisco ACI networking and Cisco UCS servers. The solution should also provide on-premises Kubernetes and AppDynamics performance monitoring. Because of the security requirements, the solution not install a local client on products under management. which orchestration solution meets these requirements?

- A. Cisco APIC
- B. CISCO UCS director
- C. Cisco DCNM
- D. Cisco CloudCenter

Answer: D

NEW QUESTION 2

An engineer deploys a custom Guest Shell rootfs on a Nexus 9000 Series Switch. Drag and drop the steps from the left into the order required to deploy the solution on the right. Not all options are used.

Customize the guest shell rootfs.	Step 1
Export the Guest Shell rootfs.	Step 2
Store it in a file server.	Step 3
Import the Guest Shell rootfs to other switches.	Step 4
Install the specific Guest Shell across devices simultaneously.	Step 5

- A. Mastered
- B. Not Mastered

Answer: A

Explanation:

A picture containing text Description automatically generated

<https://www.cisco.com/c/en/us/td/docs/switches/datacenter/nexus9000/sw/93x/programmability/guide/b-cisco-ne>

Replicating the Guest Shell

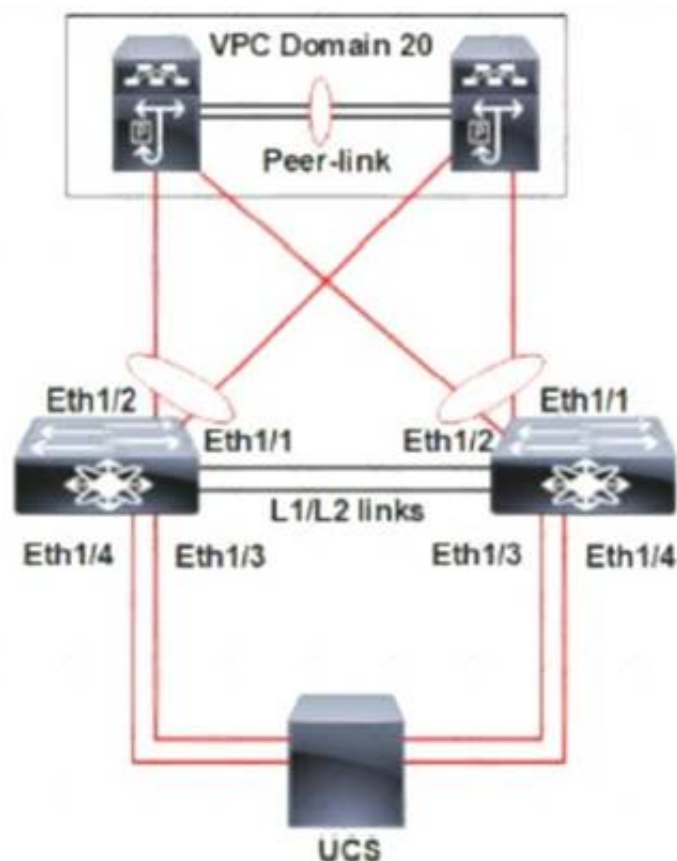
Beginning with Cisco NX-OS release 7.0(3)I7(1), a Guest Shell rootfs that is customized on one switch can be deployed onto multiple switches.

The approach is to ¹customize and then ²export the Guest Shell rootfs and ³store it on a file server. A POAP script can ⁴download (import) the Guest Shell rootfs to other switches and ⁵install the specific Guest Shell across many devices simultaneously.

- Exporting Guest Shell rootfs
- Importing Guest Shell rootfs
- Importing YAML File
- show guestshell Command

NEW QUESTION 3

Refer to the exhibit.



A pair of Cisco Nexus switches form a vPC. A new chassis is added to the pre-existing Cisco UCS domain. A new chassis must be discovered, and all links from the chassis to the LAN network must be established. Which set of actions accomplishes these requirements?

- ☐ Set the chassis discovery policy action to four links.
Configure Eth1/3 and Eth1/4 as server ports.
Acknowledge the chassis.
- ☒ Set the chassis discovery policy action to four links.
Configure Eth1/1 and Eth1/2 as uplink Fibre Channel ports.
Set the link group preference to None.
- ☐ Set the chassis discovery policy action to one link.
Configure Eth1/1 and Eth1/2 as uplink Ethernet ports.
Set the link group preference to Port Channel.
- ☐ Set the chassis discovery policy action to one link.
Configure Eth1/3 and Eth1/4 as server ports.
Acknowledge the chassis.

- A. Option A
- B. Option B
- C. Option C
- D. Option D

Answer: C

NEW QUESTION 4

Which solution provides remote and direct file-level access to users and systems?

- A. direct-attached storage
- B. Fibre Channel over Ethernet
- C. storage area network
- D. network-attached storage

Answer: D

NEW QUESTION 5

A server engineer wants to control power uses on a Cisco UCS C-series rack server down to the component level. Which two components support specific power limits? (Choose two.)

- A. memory
- B. graphic card
- C. processor
- D. network controller
- E. storage controller

Answer: AC

NEW QUESTION 6

Which two methods are available to Manage an ACI REST API session authentication when a user is unauthenticated?

- A. POST to aaaLogin
- B. POST to aaaUserLogin
- C. GET aaaRefresh
- D. GET to aaaListDomains
- E. DELETE to aaaLogout

Answer: AC

Explanation:

These API methods enable you to manage session authentication:

aaaLogin —Sent as a POST message, this method logs in a user and opens a session. The message body contains an aaa:User object with the name and password attributes, and the response contains a session token and cookie. If multiple AAA login domains are configured, you must prepend the user's name with apic: domain\\ .

aaaRefresh —Sent as a GET message with no message body or as a POST message with the aaaLogin message body, this method resets the session timer. The response contains a new session token and cookie.

aaaLogout —Sent as a POST message, this method logs out the user and closes the session. The message body contains an aaa:User object with the name attribute. The response contains an empty data structure.

aaaListDomains —Sent as a GET message, this method returns a list of valid AAA login domains. You can send this message without logging in.

https://www.cisco.com/c/en/us/td/docs/switches/datacenter/aci/apic/sw/2-x/rest_cfg/2_1_x/b_Cisco_APIC_REST_API_Configuration_Guide/b_Cisco_APIC_REST_API_Configuration_Guide_chapter_01.html

NEW QUESTION 7

Where does the witness VM reside in a Cisco Hyperflex Edge deployment?

- A. Windows application
- B. Hyper Rex Data Platform
- C. Cisco Intersight
- D. local HyperFlex datastore

Answer: C

NEW QUESTION 8

An engineer configures port security on a Cisco MDS 9000 Series Switch. The MDS switch configuration must meet these requirements

- The switch must inmate the VSAN 4 port security database despite any conflicts.
- New devices must be statically added to the switch.
- Configuration changes for VSAN 4 must be applied throughout the fabric with any lodes on the fabric released

Which configuration set meets these requirements?

- ☐ port-security activate vsan 4
no port-security auto-learn vsan 4
port-security allocate
port-security commit vsan 4
- ☐ port-security activate vsan 4
port-security manual-learn vsan 4
port-security allocate
port-security commit
- ☐ port-security activate vsan 4 force
port-security auto-learn vsan 4
port-security distribute
port-security commit
- ☐ port-security activate vsan 4 force
no port-security auto-learn vsan 4
port-security distribute
port-security commit vsan 4

- A. Option A
- B. Option B
- C. Option C
- D. Option D

Answer: D

NEW QUESTION 9

A storage array must be connected to port ethernet1/10 on a Cisco MDS 9000 Series Switch In addition, the array must connect using the FCoE protocol and be single-homed Which configuration meets these requirements?

- ☒ **vlan database**
vlan 101 fcoe
vsan 101 enable
interface vfc 10 vsan 101
- ☐ **interface vfc 10**
switchport mode fcoe
switchport access vlan 101
bind interface ethernet1/10
- ☒ **vlan database**
vlan 101 vsan
vsan 101 fcoe
vsan 101 interface vfc 10
- ☐ **interface ethernet1/10**
switchport mode trunk
bind interface vfc 10
fcoe vsan 101
- ☐ **vsan database**
vlan 101
vsan 101
fcoe vsan 101 interface vfc 10
- ☐ **interface 1/10**
switchport mode e
fcoe vfc 10
- ☐ **interface vfc 10**
switchport mode f
bind interface ethernet 1/10
- ☐ **vsan database**
vsan 101
vlan 101
fcoe vsan 101
vsan 101 interface vfc 10

- A. Option A
B. Option B
C. Option C
D. Option D

Answer: D

NEW QUESTION 10

What is required for using puppet in a Cisco NX-OS environment?

- A. Open Agent Container
B. XML management interface
C. NX-API
D. OpenNP

Answer: A

NEW QUESTION 10

An engineer must implement a disaster recovery policy for the Cisco UCS infrastructure. The solution must meet these criteria:

- The Recovery Point Objective must be 48 hours.
- The backup must use encrypted transmission.
- The Recovery Time Objective must be 4 hours.

Which configuration set must be used in the scheduled backup to meet these requirements?

- ☒ **Protocol: SFTP**
Schedule: Weekly
- ☐ **Protocol: FTP**
Schedule: Bi-Weekly
- ☐ **Protocol: TFTP**
Schedule: Bi-Weekly
- ☐ **Protocol: SCP**
Schedule: Daily

- A. Option A

- B. Option B
- C. Option C
- D. Option D

Answer: D

NEW QUESTION 15

Which data structure results from running this Python code?

```
>>> import json
>>> f = open('fname.json', 'r')
>>> var1 = json.load(f)
>>> var1
{'bd': 'bd1', 'ap': {'eggs': [{'name': 'app'}, {'name': 'web'}, {'name': 'db'}], 'name': 'OnlineStore'}, 'name': '39233259', 'pvn': 'pvn1'}
```

- A. tuple
- B. dictionary
- C. set
- D. list

Answer: B

NEW QUESTION 19

An engineer must configure RBAC in Cisco UCS Manager in an existing data center environment. Which two roles can be used to configure LAN Connectivity policies? (Choose two.)

- A. network-admin
- B. server-profile
- C. admin
- D. enable
- E. operations

Answer: AC

Explanation:

https://www.cisco.com/c/en/us/td/docs/unified_computing/ucs/sw/gui/config/guide/1-4/UCSM_GUI_Configuration_Guide_1_4_chapter9.html
https://www.cisco.com/c/en/us/td/docs/unified_computing/ucs/ucsm_privileges/3-2/UCSM-Privileges-3_2/UCSM-Privileges-3_2_chapter_01.html

NEW QUESTION 20

After a Cisco Nexus 7000 Series Switch chassis replacement, the administrator discovers that all vPC-enabled LACP port channels are reinitialized. The administrator wants to prevent this issue the next time the chassis is replaced. Which two actions must be taken to meet this requirement before the isolated device is reloaded? (Choose two)

- A. Set the vPC MAC address to a lower value than the peer
- B. Change the vPC system-priority of the replacement chassis to a higher value than the peer if.
- C. Change the vPC system-priority of the replacement chassis to a lower value than the peer.
- D. Set the vPC MAC address to a higher value than the peer
- E. Configure auto-recovery to the disable state on both peers

Answer: BE

Explanation:

https://www.cisco.com/c/en/us/td/docs/switches/datacenter/nexus9000/sw/6-x/interfaces/configuration/guide/b_-----
<https://community.cisco.com/t5/networking-documents/vpc-auto-recovery-feature-in-nexus-7000/ta-p/3123651>

vPC and LACP

The Link Aggregation Control Protocol (LACP) uses the system MAC address of the vPC domain to form the LACP Aggregation Group (LAG) ID for the vPC.

You can use LACP on all the vPC EtherChannels, including those channels from the downstream switch. We recommend that you configure LACP with active mode on the interfaces on each EtherChannel on the vPC peer switches. This configuration allows you to more easily detect compatibility between switches, unidirectional links, and multihop connections, and provides dynamic reaction to run-time changes and link failures.

The vPC peer link supports 16 EtherChannel LACP interfaces. You should manually configure the system priority on the vPC peer-link switches to ensure that the vPC peer-link switches have a higher LACP priority than the downstream connected switches. A lower numerical value system priority means a higher LACP priority.

NEW QUESTION 23

A customer data center is configured for distribution of user roles, call home, and NTP. The data center was split into two geographically separate locations called DC1 and DC2. The requirement is for the user role configurations to be distributed in DC1 and for NTP and call home features to be constrained to DC2. Which two configuration sets must be used to meet these requirements? (Choose two.)

- A. `! On Data Center 1`
`configure terminal`
`cfs 1`
`roles`
`aaa`
- B. `! On Data Center 1`
`configure terminal`
`cfs region 1`
`ntp`
`callhome`
- C. `! On Data Center 1`
`configure terminal`
`cfs 1`
`ntp`
`callhome`
- D. `! On Data Center 2`
`configure terminal`
`cfs region 2`
`roles`
- E. `! On Data Center 2`
`configure terminal`
`cfs 2`
`roles`
`aaa`

- A. Option A
B. Option B
C. Option C
D. Option D
E. Option E

Answer: CD

Explanation:

This example shows how to move the Call Home application to CFS region 2:

```
switch# config t
switch(config)# cfs region 2
switch(config-cfs-region)# callhome
switch(config-cfs-region)# show cfs region name callhome
```

https://www.cisco.com/c/en/us/td/docs/switches/datacenter/sw/4_2/nx-os/system_management/configuration/guide/sm_nx_os_cli/sm_2cfs.html

NEW QUESTION 28

An engineer needs to create a new user in the local user database on Cisco UCS Fabric Interconnect. The user needs permissions to change the following configuration inside UCS Manager version 3.1:

- vNIC and vHBA profiles
- Fan speed and power redundancy profile of UCS Manager

Which two roles must be assigned to a user to achieve this goal? (Choose two.)

- A. server-compute
B. facility-manager
C. operations
D. server-equipment
E. server-profile

Answer: AD

NEW QUESTION 31

Which method must a network engineer use to upgrade the BIOS firmware of a Cisco UCS standalone C-Series rack-mount server?

- A. Use the Cisco host upgrade utility.
B. Use the Cisco hardware upgrade utility.
C. Use the Cisco host firmware policy.
D. Use the U-ACPI Interface.

Answer: A

NEW QUESTION 36

A server engineer wants to control power usage on a Cisco UCS C-Series rack server down to the component level. Which two components support specific power limits? (Choose two.)

- A. storage controller
- B. network controller
- C. processor
- D. graphic card
- E. memory

Answer: CE

Explanation:

https://www.cisco.com/c/en/us/td/docs/unified_computing/ucs/c/sw/gui/config/guide/4_1/b_Cisco_UCS_C-serie

NEW QUESTION 40

Due to a newly announced security advisory, a company has been informed that they must update the configuration of 500 network devices that are deployed in their network. The engineering team must assist the operations team to prepare for this update. The operations team does not have direct access to the network devices and must log in via a Linux server. This is the first time that the team is making a network-wide configuration and must change all devices without first installing additional software on the network devices. The operations team is unfamiliar with automation and scripting technologies. Which automation tool must be used to accomplish this goal?

- A. Chef
- B. Ansible
- C. Puppet
- D. Saltstack

Answer: B

NEW QUESTION 42

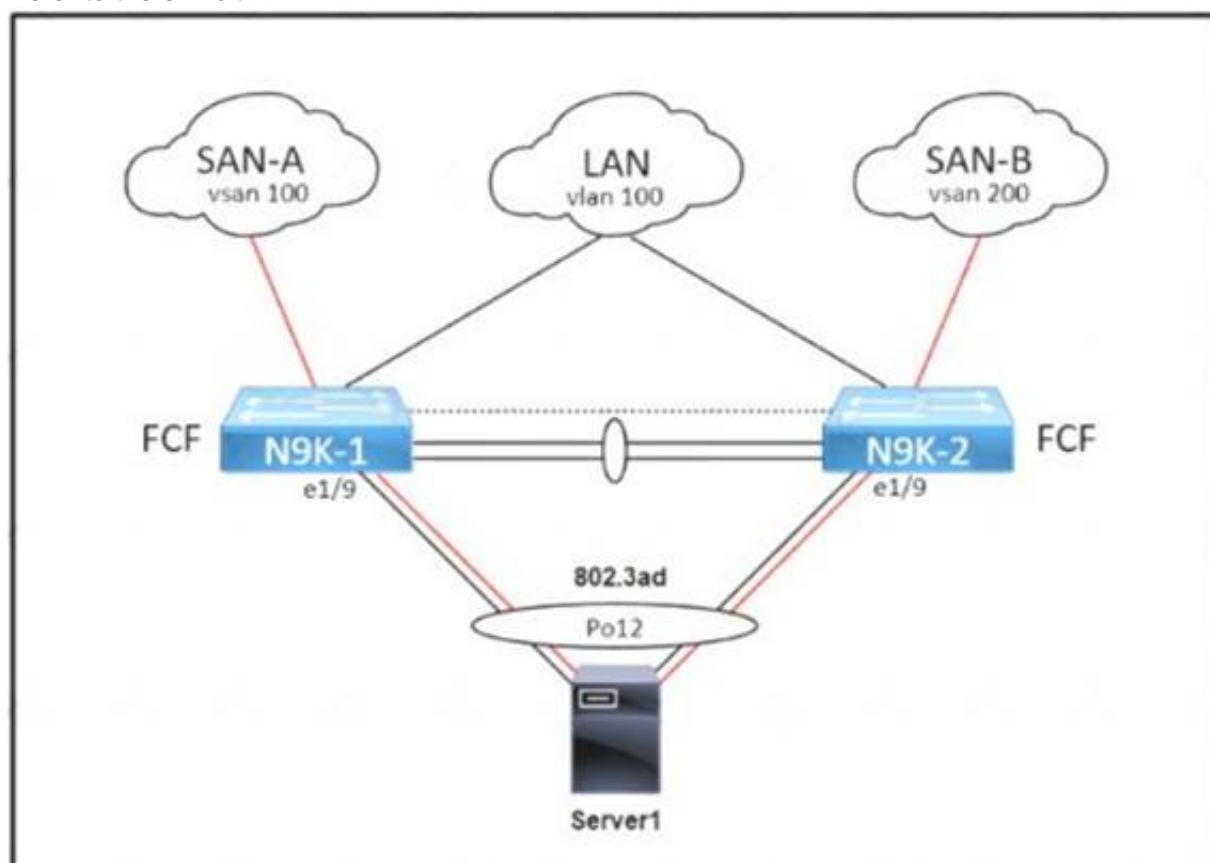
What is a benefit of Cisco HyperFlex All-Flash Stretched cluster deployment as compared to All-HDD Stretched cluster deployment?

- A. lower cost
- B. lower number of IOPS
- C. higher cost
- D. higher number of IOPS

Answer: D

NEW QUESTION 47

Refer to the exhibit.



An administrator must complete the unified fabric configuration between Server1 and a pair of Cisco Nexus 9000 Series Switches. Drag and drop the code snippets from the right onto the blanks in the code on the left to complete the N9K-1 configuration. Snippets are used more than once.


```

service-policy type qos input default-fcoe-in-policy
int [ ]
  switchport trunk allowed [ ] 1, 100
int [ ]
  bind interface [ ]
  no shut

```

vlan

vfc 1

po12

- A. Mastered
 B. Not Mastered

Answer: A

Explanation:

Po12
 Vlan Vfc1 Po12

NEW QUESTION 50

An engineer must shut down the Ethernet 1/2 interface when the Ethernet 4/5 interface state is down. Drag and drop the CLI commands from the bottom onto the blanks in the exhibit to implement this EEM. Not all commands are used.

```

switch# configure terminal
switch(config)# track 1 [ ]
switch(config-track)# end

switch(config)# event manager applet track_4_5_down
switch(config-applet)# event track 1 state down
switch(config-applet)# action 1 syslog msg EEM applet
track_4_5_down shutting down port eth1/2 due to eth4/5
being down
switch(config-applet)# action 2 cli conf term
switch(config-applet)# action 3 cli [ ]
switch(config-applet)# action 4 cli [ ]
switch(config-applet)# end

```

interface ethernet 1/2

interface ethernet 4/5

no shut

shut

- A. Mastered
 B. Not Mastered

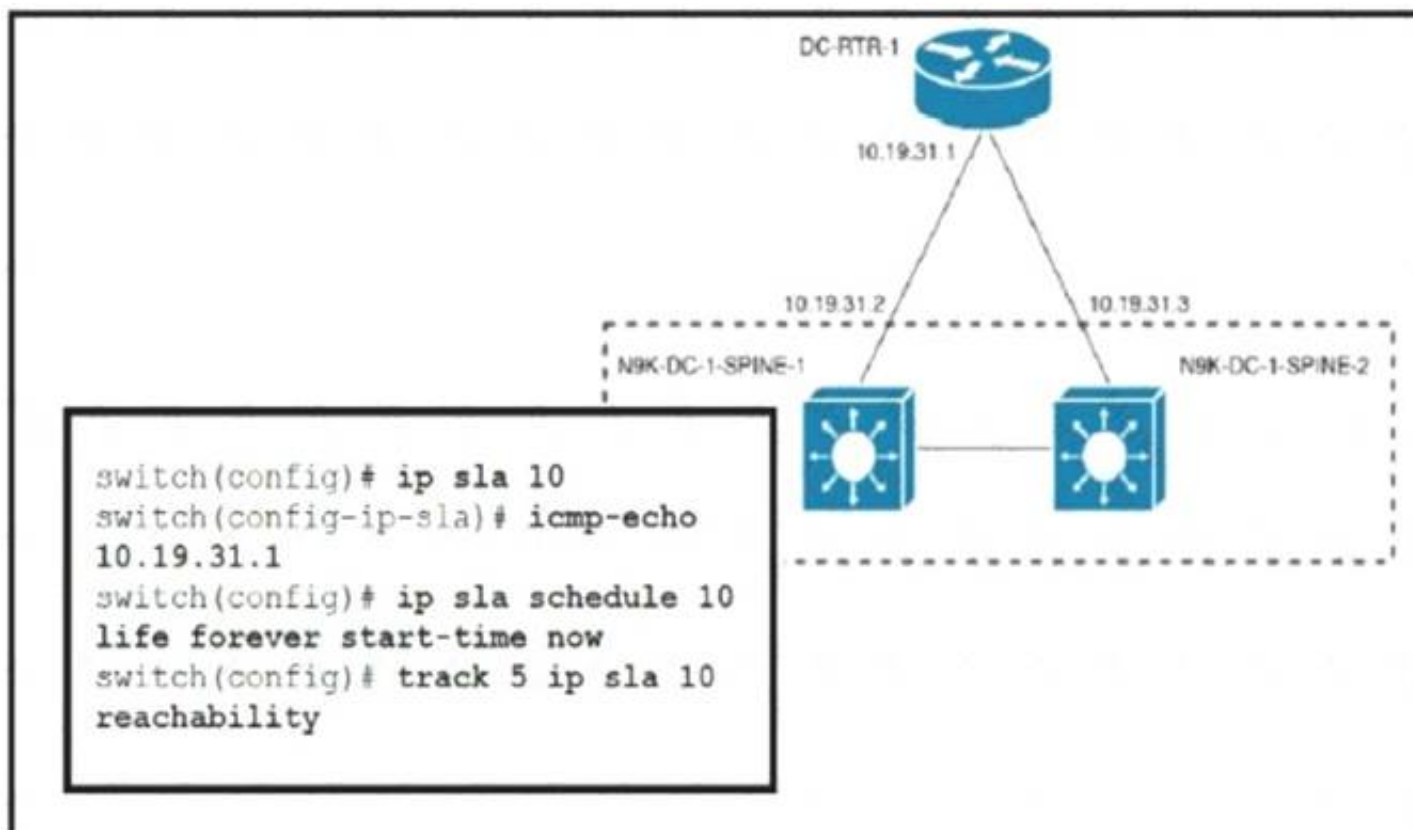
Answer: A

Explanation:

Text Description automatically generated

NEW QUESTION 55

Refer to the exhibit.



An engineer must invoke a Python script that alerts the operations team when the router DC-RTR-1 becomes unreachable. Which configuration set accomplishes this task?

- ☒ track 3 ip sla 10 reachability
 event name GATEWAY-DOWN
 event state down
 action cli command routerdown.py
- ☐ scheduler job name ROUTER-DOWN
 job track 9 state down
 action 1.0 cli source routerdown.py
 schedule 10
- ☐ event scheduler name DOWN-ROUTER
 event track 2 state 1 not up
 event action 1.0 command source routerdown.py
 event start 0:00 repeat 0:05
- ☐ event manager applet ROUTER-DOWN-SLA
 event track 5 state down
 action 1.0 event-default
 action 2.0 cli command source routerdown.py

- A. Option A
- B. Option B
- C. Option C
- D. Option D

Answer: D

NEW QUESTION 56

In an FCoE environment, for which two sets of data must an interface that implements the PAUSE mechanism always provision sufficient ingress buffer? (Choose two)

- A. frames that were sent with high credit
- B. frames that were processed and transmitted by the transmitter before the PAUSE frame left the sender
- C. frames that were sent on the link but not yet received.
- D. frames that were sent on the link and received.
- E. frames that were processed and transmitted by the transmitter after the PAUSE frame left the sender.

Answer: BC

Explanation:

https://www.cisco.com/c/en/us/td/docs/switches/datacenter/nexus7000/sw/fcoe/config/cisco_nexus7000_fcoe_config_guide_8x/configuring_fcoe.html

NEW QUESTION 60

An engineer upgrades the bash on the Cisco Nexus 9000 Series Switch.

```

guestshell:~$ sudo [MISSING_COMMAND] /bootflash/bash-4.2_8642092948678a-r8x86_64.rpm.rpm
Preparing...
##### [100%]
1:bash ##### [100%]
update-alternatives: Linking //bin/sh to /bin/bash
    
```

Which command must be used to complete the task?

- A. rpm -qa
- B. rpm -Uhv
- C. upgrade -U
- D. update -vh

Answer: B

NEW QUESTION 64

An engineer deploys a new Cisco Nexus 5000 Series Switch in an existing environment with strict security policies. The new device should meet these requirements:

- Secure end-user ports with minimum configuration effort.
- Log security breaches and require manual recovery.
- Retain the switch configuration if the device restarts.

Which configuration must be used?

- A.

```
switchport port-security
switchport port-security max 1
switchport port-security violation shutdown
```
- B.

```
switchport port-security
switchport port-security violation shutdown
switchport port-security mac-address dynamic
```
- C.

```
switchport port-security
switchport port-security max 1
switchport port-security mac-address sticky
```
- D.

```
switchport port-security
switchport port-security violation restrict
switchport port-security mac-address sticky
```

Answer: C

NEW QUESTION 66

Drag and drop the network assurance concepts from the left onto the corresponding benefits on the right.

Cisco Tetration	allows close to real-time data monitoring
Data Management Engine	confirms that the network operates consistently with business requirements
Cisco Network Assurance Engine	offers overall protection and enables analysis of the network in real time to identify security incidents faster
Streaming Telemetry	allows the characteristics to be presented as object properties

- A. Mastered
- B. Not Mastered

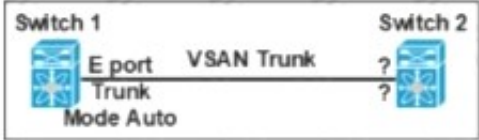
Answer: A

Explanation:

Diagram Description automatically generated

NEW QUESTION 67

Refer to the exhibit.



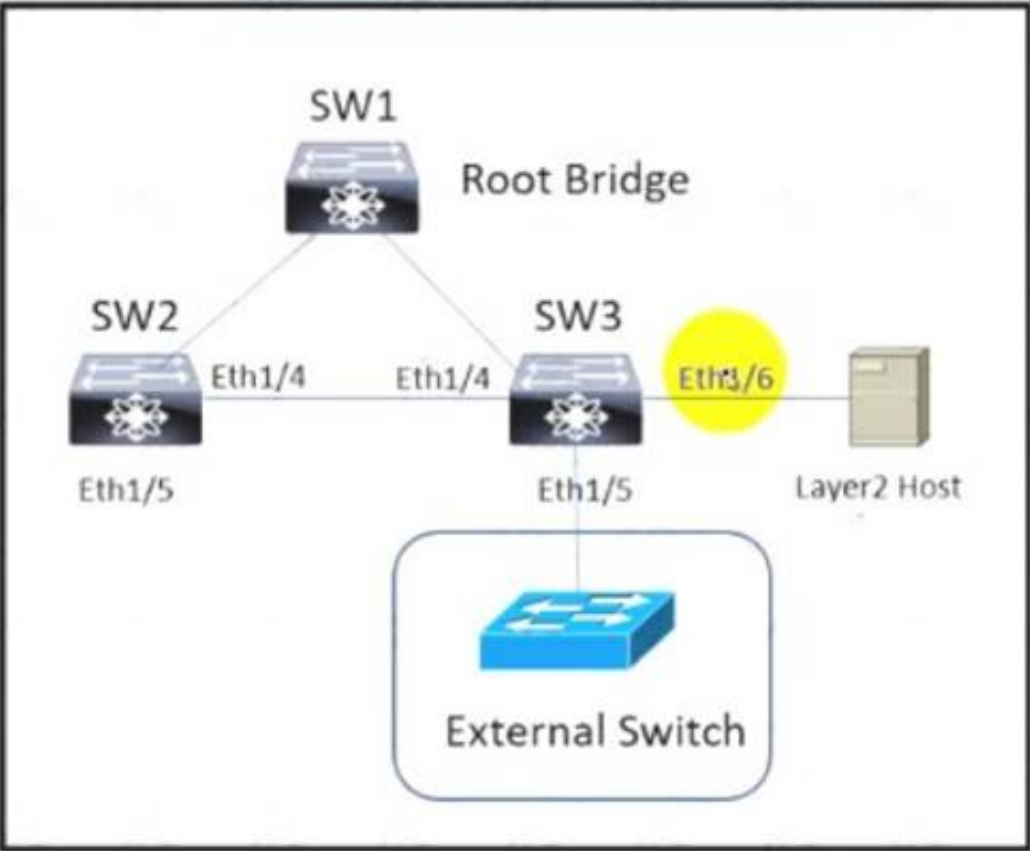
Which feature must be used to configure on switch 2 to establish a VSAN trunk between switch 1 and switch 2?

- A. F portTrunk Mode Passive
- B. E PortTrunk Mode On
- C. N PortTrunk Mode Active
- D. NP PortTrunk Mode Auto

Answer: B

NEW QUESTION 72

Refer to the exhibit.



The Cisco Nexus Series Switches SW1, SW2, and SW3 are connected via Layer 2 copper interfaces. An engineer implements loop prevention standard IEEE 802.1w on each VLAN to provide faster recovery from network changes or failures. The Implementation has these requirements

- Interfaces that are connected to Layer 2 hosts must not receive STP BPDUs.
- The implementation must detect unidirectional links due to one-way traffic twisted-pair links
- Bridge assurance must be enabled between SW2 and SW3
- The Layer 2 domain must be protected from superior BPDUs that arrive from external switches.

Drag and drop the code snippets from the right onto the blanks in the code on the left to complete the configuration for SW3. Not all code snippets are used.

```

! SW3 configuration
interface ethernet 1/4
  spanning-tree port type
  udid
interface ethernet 1/5
  spanning-tree guard
interface ethernet 1/6
  spanning-tree port type

```

edge

aggressive

normal

network

root

bpdn

- A. Mastered
- B. Not Mastered

Answer: A

Explanation:

Network Aggressive Bpdu
edge

NEW QUESTION 74

An engineer must configure a named VSAN when the fabric interconnect is in Fibre Channel switch mode The VSAN must meet these requirements:

- Named VSAN must be called "VSAN 10".
- VSAN ID must be 10.
- FCoE ID must be 20.
- VSAN 10 must be attached to port 2 in slot 1.

Which command set configures a VSAN when the fabric interconnect is in Fibre Channel switch mode?

- ☒ UCS-A# scope fc-storage
UCS-A/fc-storage# create vsan VSAN10 10 20
UCS-A /fc-storage/vsan # create member-port fcoe a 1 2
UCS-A /fc-storage/vsan/member-port* # commit-buffer
- ☐ UCS-A# scope fc-traffic-mon
UCS-A/fc-storage# create vsan VSAN10 20 10
UCS-A /fc-storage/vsan # create member-port fcoe a 2 1
UCS-A /fc-storage/vsan/member-port* # commit-buffer
- ☐ UCS-A# scope eth-storage
UCS-A/fc-storage# create vsan VSAN10 10 20
UCS-A /fc-storage/vsan # create member-port fcoe a 2 1
UCS-A /fc-storage/vsan/member-port* # commit-buffer
- ☐ UCS-A# scope fc-uplink
UCS-A/fc-storage# create vsan VSAN10 20 10
UCS-A /fc-storage/vsan # create member-port fcoe a 1 2
UCS-A /fc-storage/vsan/member-port* # commit-buffer

- A. Option A
- B. Option B
- C. Option C
- D. Option D

Answer: A

NEW QUESTION 76

An engineer must build a lab replica of a Cisco UCS production environment. The file must be imported into a new Cisco UCS cluster using a Cisco UCS manager GUI. The file must be in XML format and be exported from Cisco UCS Manager using encrypted method. Which two configuration parameters should be selected to meet these requirements?. (Choose two.)

- A. Type: Logical configuration
- B. Protocol SCP
- C. Type Full state
- D. Protocol TFTP
- E. Type All configuration

Answer: BE

NEW QUESTION 79

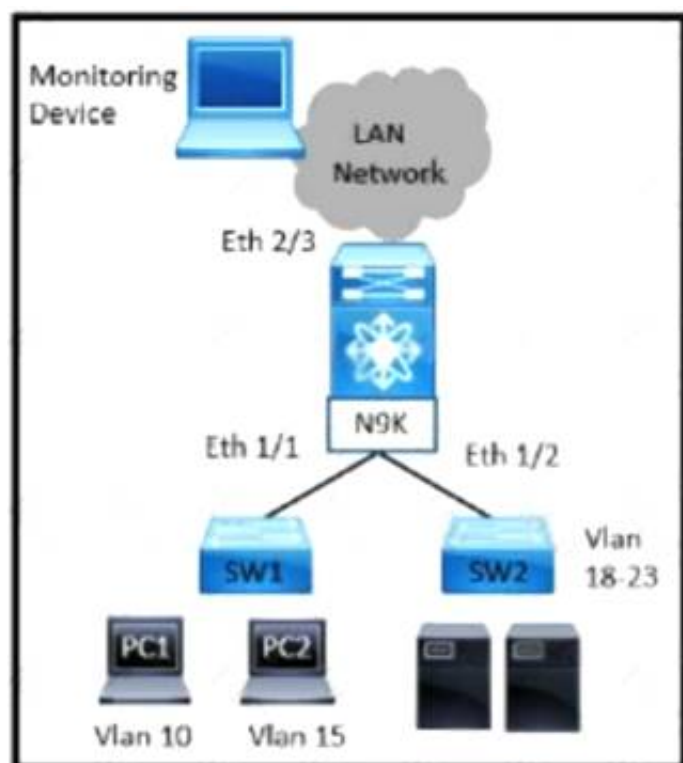
An engineer must perform a backup operation of the Cisco UCS system. The backup must be transferred to a secure location using UDP and must contain information about VLANs, VSANs, and other policies. Also, the operations team requires the backup file to be in a human-readable format. Which configuration set meets these requirements?

- A. Type: System configuration Protocol: SCP
- B. Type: Logical configuration Protocol: TFTP
- C. Type: All configuration Protocol: FTP
- D. Type: Full state Protocol: SFTP

Answer: B

NEW QUESTION 80

Refer to the exhibit



A network administrator experiences these issues with the network:

- PC1 is experiencing a buffering problem for video applications
- The servers that are connected to SW2 are experiencing packet drops when they connect to the Internet

The engineer wants to configure the required traffic capture to investigate the issue further Which configuration must be implemented to monitor the traffic?

```

N9K(config)# monitor session 5 rx
N9K(config)# monitor session 5 tx
N9K(config-monitor)# description Span_session_5
N9K(config-monitor)# source interface ethernet 1/1
N9K(config-monitor)# source interface ethernet 1/2
N9K(config-monitor)# destination interface ethernet 2/3

N9K(config)# monitor session 5 tx
N9K(config-monitor)# description Span_session_5
N9K(config-monitor)# source interface ethernet 1/1
N9K(config-monitor)# source interface ethernet 1/2
N9K(config-monitor)# destination interface ethernet 2/3

N9K(config)# monitor session 5 tx
N9K(config-monitor)# description Span_session_5
N9K(config-monitor)# source vlan 10-15 rx
N9K(config-monitor)# source interface ethernet 1/2
N9K(config-monitor)# destination interface ethernet 2/3

N9K(config)# monitor session 5 rx
N9K(config-monitor)# description Span_session_5
N9K(config-monitor)# source vlan 10 rx
N9K(config-monitor)# source interface ethernet 1/2
N9K(config-monitor)# destination interface ethernet 2/3
  
```

- A. Option A
- B. Option B
- C. Option C
- D. Option D

Answer: D

NEW QUESTION 82

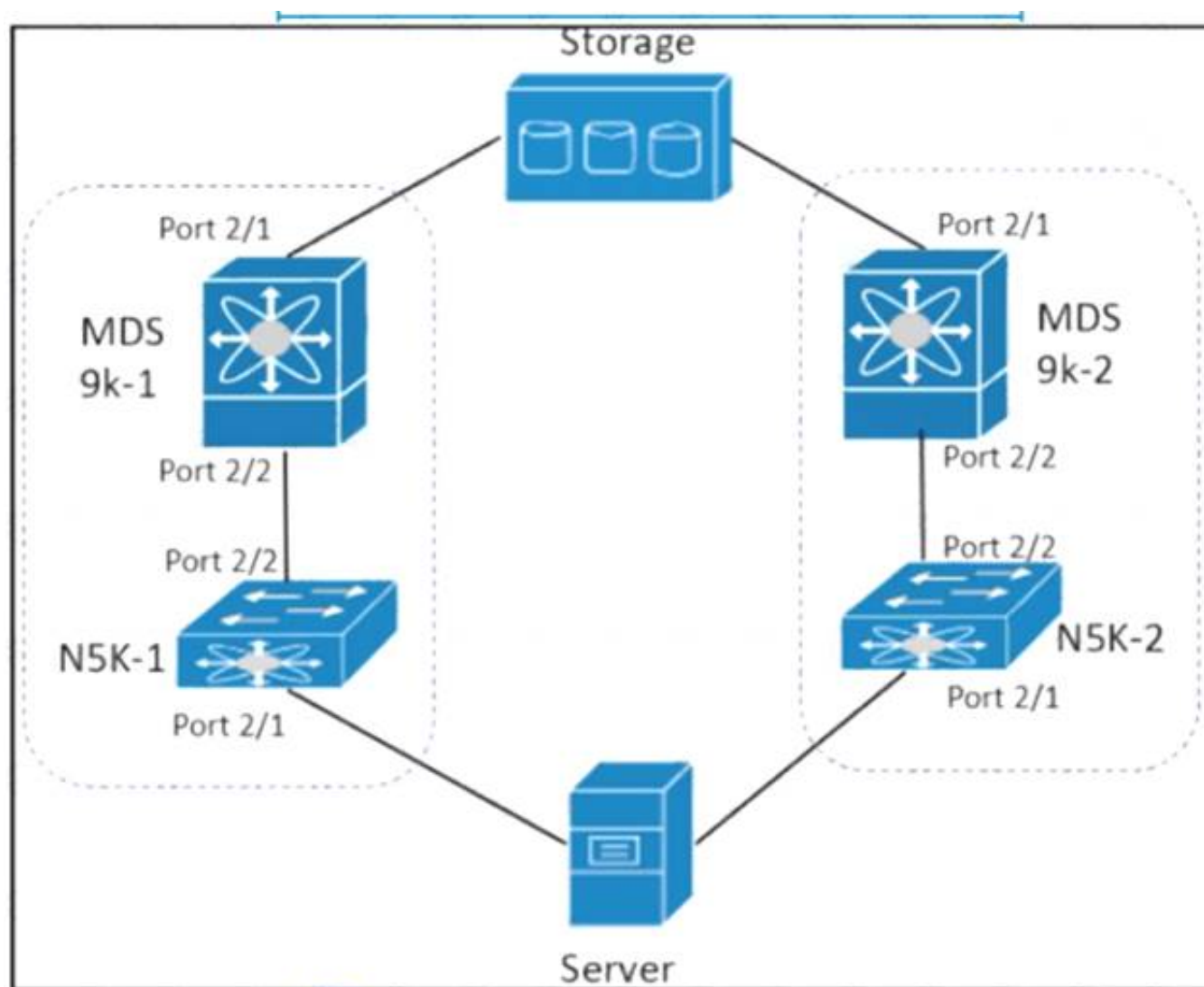
An engineer needs to connect Cisco UCS Manager to an external storage array. Due to budget limitations, the engineer must connect a Cisco UCS manager directly to an FC storage port. Which two actions must be taken to complete this connection? (Choose two)

- A. Configure the fabric interconnect in FC switch mode
- B. Create a storage connection policy
- C. Set FC zoning to disabled when creating the VSAN
- D. Configure the fabric interconnect in end host mode
- E. Create the required VSAN in the SAN cloud

Answer: AC

NEW QUESTION 86

Refer to the exhibit.



The server is sending traffic to the storage server using Fiber Channel protocol. The requirement is for the N5K-1 to forward traffic to MDS9k-1. Drag and drop the configuration steps from the right to complete the configuration for N5K-1 on the left. Not all configuration steps are used.

```

N5K-1# configuration terminal
N5K-1#(config) # 
N5K-1#(config) # interface fc 2/2
N5K-1#(config-if) # 
N5K-1#(config-if) # no shutdown
N5K-1#(config) # 
N5K-1#(config-if) # 
N5K-1#(config-if) # no shutdown
        
```

interface fc 2/1

interface port 2/1

interface port 2/2

npv enable

switchport mode F

switchport mode NP

- A. Mastered
- B. Not Mastered

Answer: A

Explanation:

npv enable, switchport mode F, interface fc2/1, switchport mode NP

NEW QUESTION 89

An engineer must configure OSPF in the data center. The external routes have already been redistributed OSPF. The network must meet these criteria:

- * The data centre servers must reach services in the cloud and the services behind the redistributed routes.
 - * The exit point toward the internet should be propagated only when there is a dynamically learned default route from the upstream router.
- Which feature is required?

- A. Default-information originate
- B. Stubby area
- C. Totally stubby area
- D. Default-information originate always

Answer: A

Explanation:

<https://learningnetwork.cisco.com/s/question/0D53i00000Kt544/defaultinformationoriginate-always>

NEW QUESTION 91

An engineer must implement protection against ICMP DoS attacks on a Cisco Nexus 9000 Series Switch. The requirement is to rate-limit ICMP without denying all other ICMP traffic. The ICMP traffic currently passing through the Cisco Nexus 9000 device must not be affected. Which configuration accomplishes these goals?

- A. Configure SNMP traps to send the ICMP notification if the CPU utilization is more than 90%.
- B. Reconfigure the Layer 3 interfaces to be in the non-default VRF and ICMP broadcast storm control
- C. Create an access list to deny ICMP traffic and apply it to all interlaces in the inside direction.
- D. Apply a control plane service policy that matches all ICMP traffic to drop the traffic fiat exceeds the threshold.

Answer: D

NEW QUESTION 94

Which two features are used to allow a nondisruptive upgrade for the ISSU process? (Choose two.)

- A. connectivity management processor
- B. nonstop forwarding
- C. graceful restart
- D. stateful switchover
- E. advanced services license

Answer: BD

NEW QUESTION 99

A network engineer is configuring the Cisco UCS service profile template with Ansible using this code.

```
hostname: 192.168.10.23
username: cisco
password: f718c4329405088301f6247ff982
name: DCE-CTRL
template_type: updating-template
uuid_pool: UUID-POOL
storage_profile: DCE-StgProf
maintenance_policy: default
server_pool: Container-Pool
host_firmware_package: 4.1(1a)
bios_policy: Docker
```

Which attribute must be used to apply the iSCSI initiator identifiers to all iSCSI vNICs for the service profiles derived from the service template?

- A. san_connectivity_policy
- B. iqn_pool
- C. boot_policy
- D. lan_connectivrtty_policy

Answer: B

NEW QUESTION 102

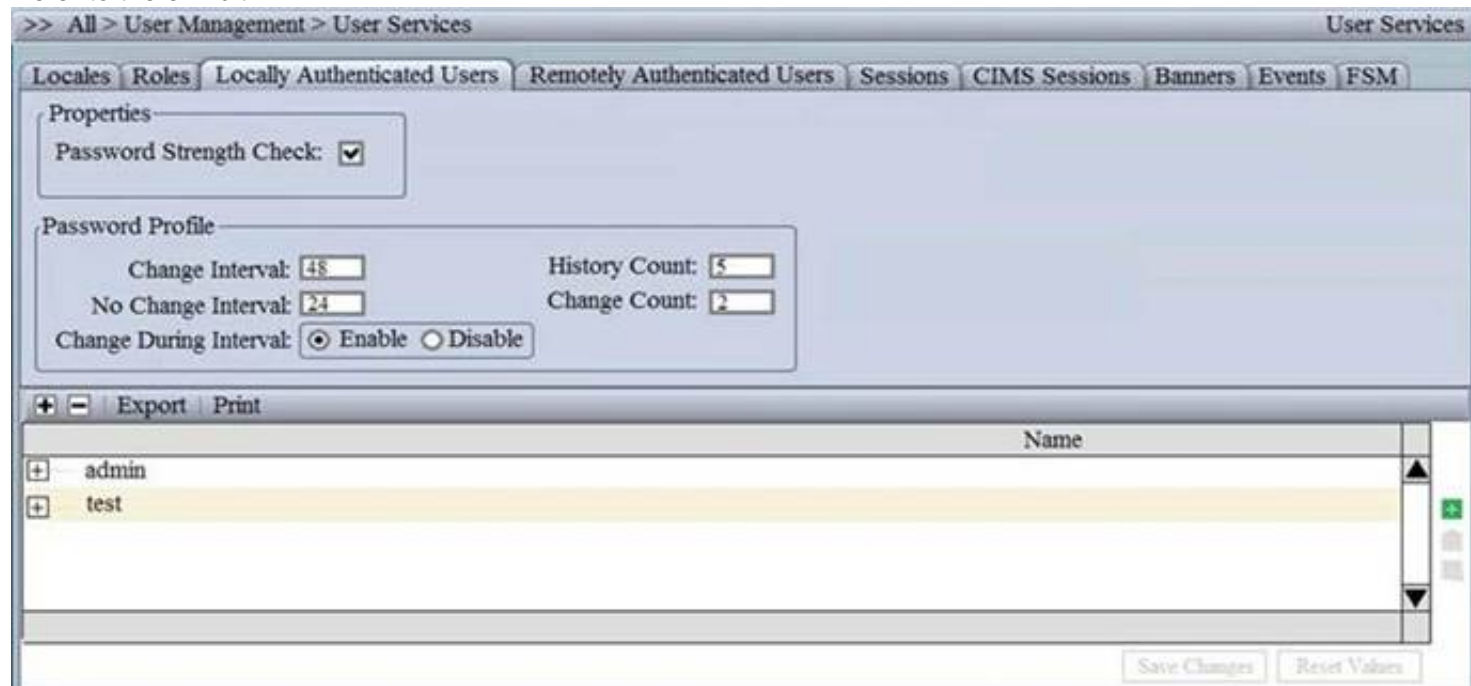
Due to a major version change, an engineer must perform a software upgrade on a Cisco Nexus Series switch. Which two technologies can be implemented to reduce disruptions to the network during the upgrade? (Choose two.)

- A. MLAG
- B. HSRP
- C. PAgP
- D. VDC
- E. vPC

Answer: BE

NEW QUESTION 107

Refer to the exhibit.



Which setting must be configured to prevent reuse of passwords?

- A. No Change Interval
- B. Change Interval
- C. History Count

D. Change Count

Answer: C

Explanation:

https://www.cisco.com/c/en/us/td/docs/unified_computing/ucs/ucs-manager/GUI-User-Guides/Admin-Management/3-1/b_Cisco_UCS_Admin_Mgmt_Guide_3_1/b_Cisco_UCS_Admin_Mgmt_Guide_3_1_chapter_011.html

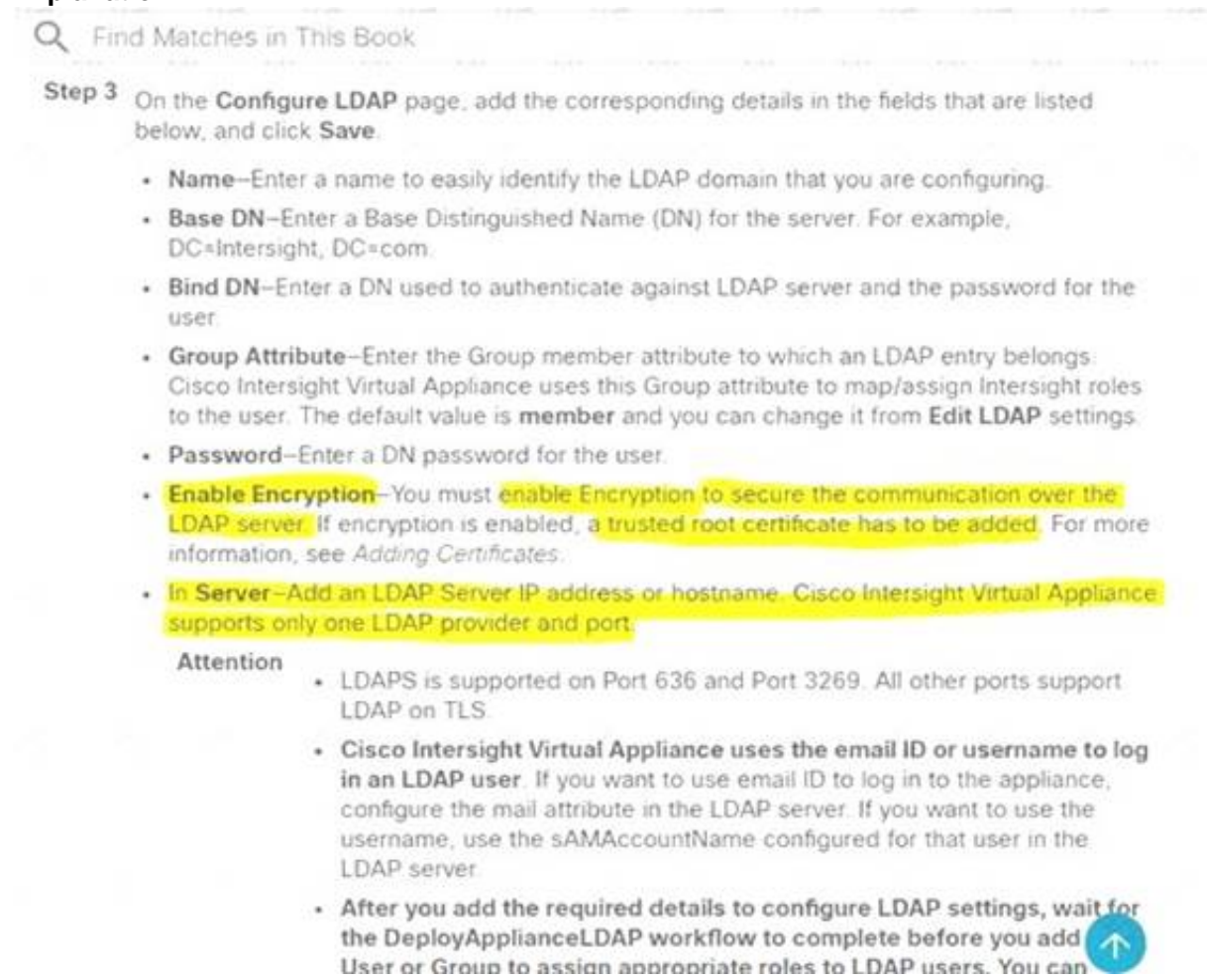
NEW QUESTION 110

An engineer is implementing Cisco Intersight in a secure environment. The environment must use LDAP directory service and ensure information integrity and confidentiality. Which two steps must be taken to implement the solution? (Choose two.)

- A. Enable Encryption for LDAP
- B. Add a self-signed LDAP certificate to Cisco Intersight.
- C. Enable Certificate Signing Request in Cisco Intersight.
- D. Add a trusted root LDAP certificate to Cisco Intersight
- E. Add a trusted OAuth token to Cisco Intersight

Answer: AD

Explanation:



Find Matches in This Book

Step 3 On the **Configure LDAP** page, add the corresponding details in the fields that are listed below, and click **Save**.

- **Name**—Enter a name to easily identify the LDAP domain that you are configuring.
- **Base DN**—Enter a Base Distinguished Name (DN) for the server. For example, DC=Intersight, DC=com.
- **Bind DN**—Enter a DN used to authenticate against LDAP server and the password for the user.
- **Group Attribute**—Enter the Group member attribute to which an LDAP entry belongs. Cisco Intersight Virtual Appliance uses this Group attribute to map/assign Intersight roles to the user. The default value is **member** and you can change it from **Edit LDAP** settings.
- **Password**—Enter a DN password for the user.
- **Enable Encryption**—You must enable Encryption to secure the communication over the LDAP server. If encryption is enabled, a trusted root certificate has to be added. For more information, see *Adding Certificates*.
- **In Server**—Add an LDAP Server IP address or hostname. Cisco Intersight Virtual Appliance supports only one LDAP provider and port.

Attention

- LDAPS is supported on Port 636 and Port 3269. All other ports support LDAP on TLS.
- Cisco Intersight Virtual Appliance uses the email ID or username to log in an LDAP user. If you want to use email ID to log in to the appliance, configure the mail attribute in the LDAP server. If you want to use the username, use the sAMAccountName configured for that user in the LDAP server.
- After you add the required details to configure LDAP settings, wait for the DeployApplianceLDAP workflow to complete before you add User or Group to assign appropriate roles to LDAP users. You can

https://www.cisco.com/c/en/us/td/docs/unified_computing/Intersight/b_Cisco_Intersight_Appliance_Getting_Started_Guide/b_Cisco_Intersight_Appliance_Install_and_Upgrade_Guide_chapter_0110.html

NEW QUESTION 111

An engineer is implementing traffic monitoring for a server vNIC that is configured with fabric failover enabled. The requirement is for the traffic to be sent to an analyzer, even during a failure of one of the fabric interconnects. The analyzer is connected to unconfigured Ethernet ports on both fabric interconnects. Which configuration accomplishes this task?

- A. Create two traffic monitoring sessions with different names, one per fabric. Connect the analyzer connected to FI-B as the destination for both monitoring sessions.
- B. Create two traffic monitoring sessions with the same name, one per fabric. Connect an analyzer on each FI as the destination for the monitoring session local to that FI.
- C. Create two traffic monitoring sessions with the same name, one per fabric. Connect the analyzer connected to FI-A as the destination for both monitoring sessions.
- D. Create two traffic monitoring sessions with different names, one per fabric. Connect an analyzer on each FI as the destination for the monitoring session local to the FI.

Answer: A

NEW QUESTION 113

An engineer must create a scheduler configuration to create two backup jobs per day. The backup file must be copied to a server in the operations VRF. Which configuration accomplishes this task?

A)

```
scheduler schedule name CNFGBACKUP
  job name BACKUP-JOB
  copy running-config tftp://10.19.11.12/$(SWITCHNAME)-$(TIMESTAMP).cfg vrf operations
  time start now repeat 12:00
```

B)

```
scheduler schedule name CNFGBACKUP
  job name BACKUP-JOB
  show tech-support | redirect vrf operations tftp://10.19.11.12/$(SWITCHNAME)-$(TIMESTAMP).cfg
  time start daily 12:30 0:30
```

C)

```
scheduler schedule name CNFGBACKUP
  job name BACKUP-JOB
  copy startup-config tftp://10.19.11.12/$(SWITCHNAME)-$(TIMESTAMP).cfg
  time daily 12:30 0:30
```

D)

```
scheduler schedule name CNFGBACKUP
  job name BACKUP-JOB
  copy vrf operations config tftp://10.19.11.12/$(SWITCHNAME)-$(TIMESTAMP).cfg
  time start 12:30 repeat 12
```

- A. Option A
- B. Option B
- C. Option C
- D. Option D

Answer: A

NEW QUESTION 118

A customer requires a solution to orchestrate the configuration of storage arrays, firewalls, and Cisco ACI networking. Additionally, the orchestration product must support open automation and a service catalog. Which solution meets these requirements?

- A. Cisco UCS Director
- B. Cisco Intersight
- C. Cisco Data Center Network Manager
- D. Cisco Workload Optimization Manager

Answer: C

NEW QUESTION 120

Which statement describes monitoring Fibre Channel traffic on a Cisco UCS 6332 Fabric Interconnect?

- A. Fibre Channel traffic is monitored only on one vHBA per server.
- B. The destination port for monitoring must be an unassigned Fibre Channel port.
- C. The monitoring of Fibre Channel traffic is limited to the default VSAN.
- D. Fibre Channel traffic is capable to be monitored as it is encapsulated as FCoE.

Answer: D

Explanation:

You can monitor Fibre Channel traffic using either a Fibre Channel traffic analyzer or an Ethernet traffic analyzer. When Fibre Channel traffic is monitored with an Ethernet traffic monitoring session, at an Ethernet destination port, the destination traffic is FCoE. The Cisco UCS 6300 Fabric Interconnect supports FC SPAN only on the ingress side. A Fibre Channel port on a Cisco UCS 6248 Fabric Interconnect cannot be configured as a source port.

[https://www.cisco.com/c/en/us/td/docs/unified_computing/ucs/ucs-manager/GUI-User-Guides/System-Monitoring/3-2/b_UCSM_GUI_System_Monitoring_Guide_3_2/ b_UCSM_GUI_System_Monitoring_Guide_3_2_chapter_01101.pdf](https://www.cisco.com/c/en/us/td/docs/unified_computing/ucs/ucs-manager/GUI-User-Guides/System-Monitoring/3-2/b_UCSM_GUI_System_Monitoring_Guide_3_2/b_UCSM_GUI_System_Monitoring_Guide_3_2_chapter_01101.pdf)

NEW QUESTION 122

What is a characteristic of EPLD updates on Cisco MDS 9000 Series Switches?

- A. EPLD updates are installed only via the Cisco DCNM GUI
- B. EPLD packages update hardware functionality on a device
- C. EPLD bundles are released separately from a Cisco MDS NX-OS release
- D. EPLD updates are nondisruptive to traffic flow

Answer: B

Explanation:

https://www.cisco.com/c/en/us/td/docs/switches/datacenter/mds9000/sw/6_2/release/notes/epld/epld_rn.htm

Introduction

Switches and directors in the Cisco MDS 9000 Series contain several electrical programmable logical devices (EPLDs) that provide hardware functionalities in all of the modules. As of Cisco MDS SAN-OS Release 1.2, EPLD image upgrades are periodically provided to include enhanced hardware functionality or to resolve known issues.

NEW QUESTION 123

Refer to the exhibit

```
switch1#show run interface Vlan 10

interface Vlan10
  description Service Datacenter-Rack-A
  ip address 209.165.200.225 255.255.255.224
!
end

switch1#
```

An engineer must mirror the traffic on a switch. The engineer locates the server port that requires monitoring on switch1, but the packet sniffer is on switch2. The engineer must configure the source IP address on switch1. Which command accomplishes this goal?

- A. monitor session 10 type erspan-source
- B. monitor erspan origin ip-address 209.165.200.225
- C. source ip 209.165.200.225
- D. source interface vbn512

Answer: B**NEW QUESTION 127**

An engineer needs to monitor ingress traffic that arrives at interface Ethernet 1/3 that belongs to a Cisco Nexus 5600 Series Switch. The traffic analyzer machine located at interface Ethernet 1/5 is already monitoring other production, and the traffic analyzer must not be impacted by the traffic captured from the interface Eth1/3. The operations team allocated a traffic budget for the new monitoring session of 1 Gbps to meet this requirement. Which set of commands configures the SPAN session?

- ☒ interface Ethernet 1/3
switchport monitor rate-limit 1G

monitor session 2
destination interface ethernet 1/5
source interface Eth 1/3
- ☐ interface Ethernet 1/3 rx
switchport mode SD
switchport monitor rate-limit 1G
monitor session2
destination interface ethernet 1/5
- ☐ interface Ethernet 1/3
monitor rate-limit 1G
destination interface ethernet 1/5
source interface rx

interface Ethernet 1/5
monitor session 2
destination interface tx
- ☐ interface Ethernet 1/3
monitor session 2
destination interface ethernet 1/5
source interface rx

interface Ethernet 1/5
monitor rate-limit 1G

- A. Option A
- B. Option B
- C. Option C
- D. Option D

Answer: A**Explanation:**

Find Matches in This Book

	<code>switch(config)# interface ethernet slot/port</code>	Enters interface configuration mode for the specified Ethernet interface selected by the slot and port values.
Step 3	<code>switch(config-if)# switchport monitor rate-limit 1G</code>	Specifies that the rate limit is 1 Gbps.
Step 4	<code>switch(config-if)# exit</code>	Reverts to global configuration mode.

Example

This example shows how to limit the bandwidth on Ethernet interface 1/2 to 1 Gbps:

```
switch(config)# interface ethernet 1/2
switch(config-if)# switchport monitor rate-limit 1G
switch(config-if)#
```

Configuring Source Ports

Procedure

	Command or Action	Purpose
Step 1	<code>switch# configure terminal</code>	Enters global configuration mode.
Step 2	<code>switch(config) # monitor session session-number</code>	Enters monitor configuration mode for the specified monitoring session.
Step 3	<code>switch(config-monitor) # source interface type slot/port [rx tx both]</code>	Adds an Ethernet SPAN source port and specifies the traffic direction in which to duplicate packets. You can enter a range of Ethernet, Fibre Channel, or virtual Fibre Channel ports. You can specify the traffic direction to duplicate as ingress (Rx), egress (Tx), or both. By default, the direction is both.

https://www.cisco.com/c/en/us/td/docs/switches/datacenter/nexus5600/sw/system_management/7x/b_5600_System_Mgmt_Config_7x/configuring_span.html

NEW QUESTION 132

What is an advantage of NFS as compared to Fibre Channel?

- A. NFS enable thin provisioning for LUNs.
- B. NFS provides the dynamic allocation of storage capacity.
- C. NFS removes the impact of IP overhead.
- D. NFS provides direct access to the underlying storage hardware.

Answer: B

Explanation:

<https://www.ciscolive.com/c/dam/r/ciscolive/apjc/docs/2018/pdf/BRKINI-1011.pdf>

NEW QUESTION 135

An engineer must perform a software upgrade on a production Cisco Nexus 7000 Series Switch. Before the upgrade activity, the requirement is for all ports to be shut down and routing protocols to terminate gracefully. Which feature must be used to meet these requirements?

- A. Configuration Profile
- B. Maintenance Mode Profile
- C. Switch Profile
- D. Service Profile Template

Answer: B

NEW QUESTION 137

An engineer implements a Cisco UCS C-Series Server that must adhere to these security requirements:

- Unencrypted communication must be disabled.
- The session timeout must not exceed 15 minutes.
- Unencrypted traffic must be automatically diverted.
- CLI-based management must use nondefault ports.

Which configuration set meets these requirements?

- ☒ XML API Enabled
HTTP Port: 8080 / HTTPS Port: 8443
IPMI over LAN Enabled
Randomized Encryption Key
- ☒ HTTP Port: 80 / HTTPS Port: 443
Session Timeout: 900
Redirect HTTP to HTTPS Enabled
SSH Port: 2022
- ☒ Redfish Enabled checked
Redfish Port: 443
SSH Enabled checked
HTTPS Port: 8443
- ☒ SSH Enabled
SSH Port: 8022
SSH Timeout: 1200
IPMI over LAN Enabled

- A. Option A
- B. Option B
- C. Option C
- D. Option D

Answer: B

NEW QUESTION 140

The Cisco Nexus switch Generic Online Diagnostics policy for a PortLoopback test requires 10 consecutive failures to error disable the port. The customer wants to change it to 5 consecutive failures. Which configuration applies the changes for module 1 only?

- ☒ Nexus(config)# event manager applet custom-PortLoopback override __PortLoopback
Nexus(config-applet)# event gold mod all test PortLoopback testing-type bootup consecutive-failure 5
Nexus(config-applet)# action 1 publish-event
- ☒ Nexus(config)# event manager applet custom-PortLoopback override __PortLoopback
Nexus(config-applet)# event gold mod 1test PortLoopback testing-type bootup consecutive-failure 5
Nexus(config-applet)# action 1 publish-event
- ☒ Nexus(config)# event manager applet custom-PortLoopback override __PortLoopback
Nexus(config-applet)# event gold mod all test PortLoopback testing-type monitoring consecutive-failure 5
Nexus(config-applet)# action 1 policy-default
- ☒ Nexus(config)# event manager applet custom-PortLoopback override __PortLoopback
Nexus(config-applet)# event gold mod 1 test PortLoopback testing-type monitoring consecutive-failure 5
Nexus(config-applet)# action 1 policy-default

- A. Option A
- B. Option B
- C. Option C
- D. Option D

Answer: D

Explanation:

“mod all” is incorrect. “mod 1test” is incorrect. “publish event” is incorrect. “mod 1 test” is correct. It is with “policy-default”.

https://www.cisco.com/c/en/us/td/docs/switches/datacenter/nexus7000/sw/system-management/guide/b_Cisco_Nexus_7000_Series_NX-OS_System_Management_Configuration_Guide-RI/configuring_online_diagnostics.html

https://www.cisco.com/c/en/us/td/docs/switches/datacenter/nexus9000/sw/93x/system-management/bcisco-nexus-9000-series-nx-os-system-management-configuration-guide-93x/b-cisco-nexus-9000-seriesnxos-system-management-configuration-guide-93x_chapter_011010.html

<https://www.ciscolive.com/c/dam/r/ciscolive/us/docs/2017/pdf/BRKDCN-3234.pdf>

NEW QUESTION 142

A DNS server with IP address 192.168.1.1 is deployed in a data center A network engineer must configure a Cisco UCS Fabric Interconnect to use this DNS. Which configuration should be applied?

- ☒ **ficl-mgmt-A# scope system**
ficl-mgmt-A /system # create dns 192.168.1.1
ficl-mgmt-A /system* # commit-buffer
- ☐ **ficl-mgmt-A# scope fabric-interconnect a**
ficl-mgmt-A /fabric-interconnect # set name 192.168.1.1
ficl-mgmt-A /fabric-interconnect # scope system
ficl-mgmt-A /system # commit-buffer
- ☐ **ficl-mgmt-A# scope fabric-interconnect a**
ficl-mgmt-A /fabric-interconnect # set name 192.168.1.1
ficl-mgmt-A /fabric-interconnect* # commit-buffer
- ☐ **ficl-mgmt-A# scope system**
ficl-mgmt-A /system # scope services
ficl-mgmt-A /system/services # create dns 192.168.1.1
ficl-mgmt-A /system/services* # commit-buffer

- A. Option A
- B. Option B
- C. Option C
- D. Option D

Answer: D

NEW QUESTION 145

An engineer configures the properties of a cisco UCS cisco integrated Management controller network adapter for a standalone cisco C-Series server. The Fallback Timeout in the vNIC was set to 600. When the failure occurs. The secondary must be used and then fallback when the primary interface becomes available again. Which action be taken to meet these requirements?

- A. Set default VLAN on the adapters.
- B. Increase Cos to 6.
- C. Disable VNTAG mode.
- D. Enable Uplink failover.

Answer: D

Explanation:

Enable Uplink Failover check box - Check this box if traffic on this vNIC should fail over to the secondary interface if there are communication problems. VNTAG mode is required for this option.

Failback timeout field - After a vNIC has started using its secondary interface, this setting controls how long the primary interface must be available before the system resumes using the primary interface for the vNIC. Enter a number of seconds between 0 and 600. VNTAG mode is required for this option.

https://www.cisco.com/en/US/docs/unified_computing/ucs/c/sw/gui/config/guide/1.5/b_Cisco_UCS_C-series_G

NEW QUESTION 148

A company is running a pair of cisco Nexus 7706 series switches as part of a data center segment. All network engineers have restricted read-Write access to the core switches. A network engineer must a new FCoE VLAN to allow traffic from services toward FCoE storage. Which set of actions must be taken to meet these requirements?

- A. * 1. Create a user defined role and add the required privileges.* 2. Assign a role to a user.
- B. * 1. Add the required privilege to the VDC-admin role.
- C. Commit the changes to the active user database.
- D. * 1. Modify a network-operator role and add the required privileges.* 2. Assign a VDC-operator role to a user.
- E. * 1. Assign the network-admin role to a user.* 2. Commit the role to the switch to the active user database

Answer: B

NEW QUESTION 151

Refer to the exhibit.

```
OTV-Site1# show otv
OTV Overlay Information
Site Identifier 0000.0000.0111
Overlay interface Overlay200
VPN name: Overlay200
VPN state: UP
Extended vlans: 178 2500-2563 (Total:65)
Join interface(s): Eth1/2 (20.1.1.1)
Site vlan: 1999 (up)
AED-Capable: Yes
Capability: Unicast-Only
Is Adjacency Server: Yes
Adjacency Server(s): 20.1.1.1/20.2.1.1
```

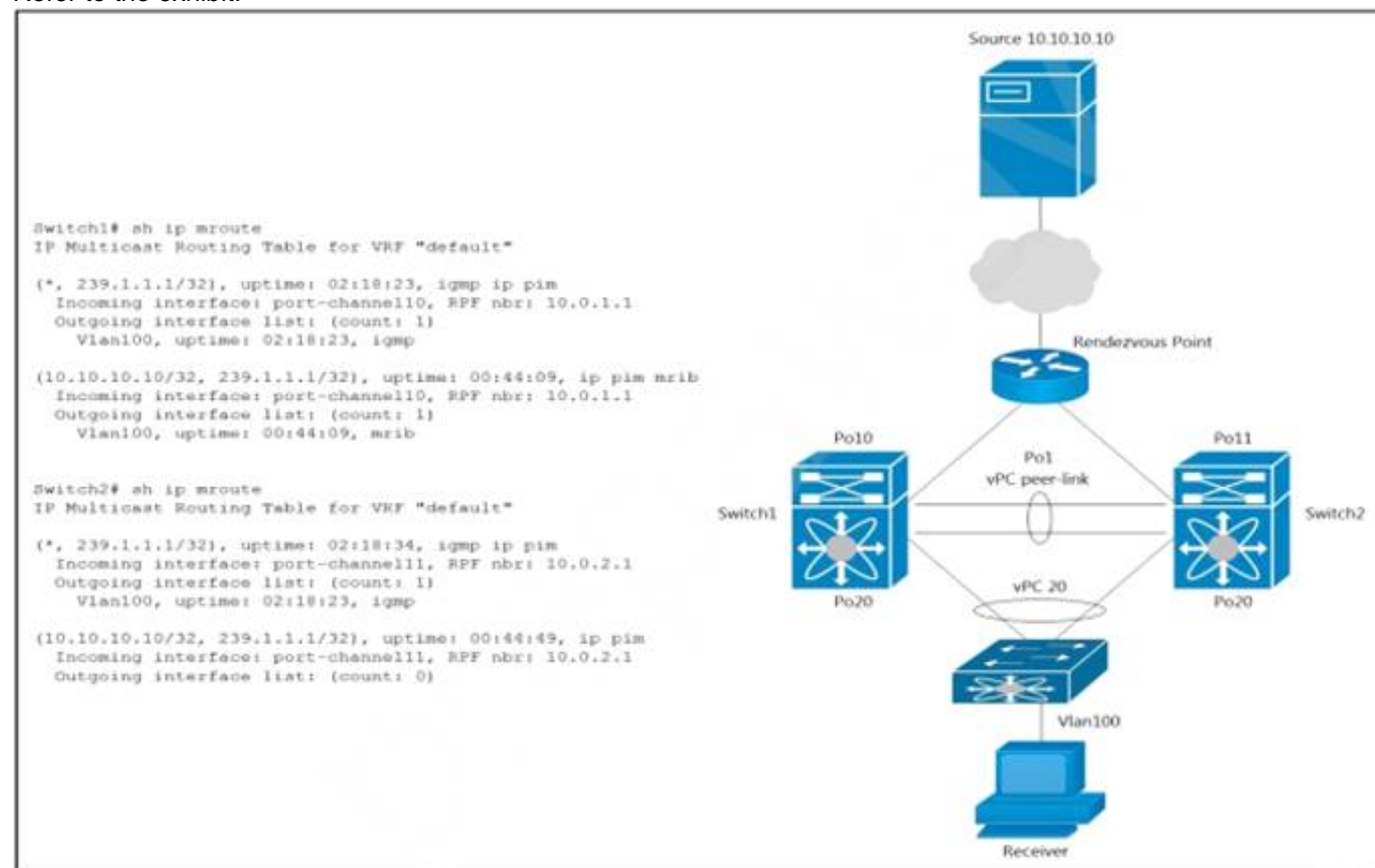
A network engineer is setting up a multihomed OTV network. The first site has been set up with a primary and secondary adjacency server. Which configuration must be added on the remote OTV AEDs site?

- A. interface Overlay200otv join-interface Ethernet1/2 otv extend-vlan 178, 2500-2563otv use-adjacency-server 20.1.1.1 unicast-only
- B. interface Overlay200otv join-interface Ethernet1/2 otv extend-vlan 178, 2500-2563otv adjacency-server unicast-only
- C. interface Overlay200otv join-interface Ethernet1/2 otv extend-vlan 178, 2500-2563
- D. interface Overlay200otv join-interface Ethernet1/2 otv extend-vlan 178, 2500-2563otv use-adjacency-server 20.1.1.1 20.2.1.1 unicast-only

Answer: D

NEW QUESTION 153

Refer to the exhibit.



A host with a source address 10.10.10.10 sends traffic to multicast group 239.1.1.1. How do the vPC switches forward the multicast traffic?

- A. If multicast traffic is received on Switch1 over the vPC peer-link, the traffic is dropped
- B. If multicast traffic is received on Po10 Switch1, the traffic is forwarded out on Po1 and Po20
- C. If multicast traffic is received on Po11 Switch2, the traffic is forwarded out only on Po20
- D. If multicast traffic is received on Po11 Switch2, the traffic is dropped.

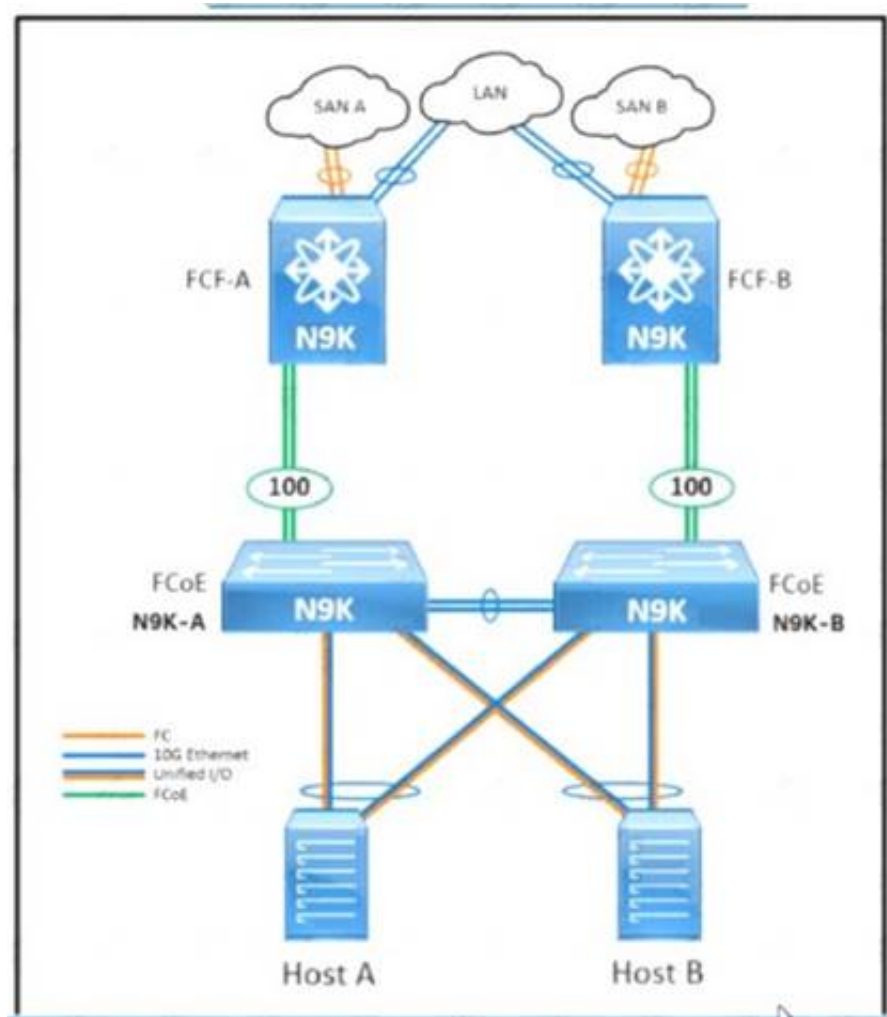
Answer: D

Explanation:

<https://www.cisco.com/c/en/us/support/docs/ip/multicast/214140-multicast-forwarding-in-vpc-based-on-loc.htm>

NEW QUESTION 156

Refer to the exhibit.



An engineer must configure FCoE between the N9K-A switch and the FCF-A Nexus 9000 core switch. The deployment has these characteristics:

- The N9K-A and N9K-B top-of-rack switches share the domain ID of the core switches.
- The hosts are equipped with converged network adapters.
- The only VSAN that is permitted to traverse port-channel 100 is VSAN 20. Which configuration completes the FCoE configuration on the N9K-A device?

- ☐ N9K-A(config)# feature fcoe
N9K-A(config)# feature npv
N9K-A(config)# interface vfc 100
N9K-A(config-if)# bind interface port-channel 100
N9K-A(config-if)# switchport mode F
N9K-A(config-if)# switchport trunk allowed vsan 20
- ☐ N9K-A(config)# feature fcoe
N9K-A(config)# feature npv
N9K-A(config)# interface vfc 100
N9K-A(config-if)# bind interface port-channel 100
N9K-A(config-if)# switchport mode N
N9K-A(config-if)# switchport trunk allowed vsan 1, 20
- ☐ N9K-A(config)# feature-set fcoe-npv
N9K-A(config)# interface vfc-port-channel 100
N9K-A(config-if)# switchport mode NP
N9K-A(config-if)# switchport trunk allowed vsan 20
- ☐ N9K-A(config)# feature-set fcoe-npv
N9K-A(config)# interface vfc-port-channel 100
N9K-A(config-if)# switchport mode E
N9K-A(config-if)# switchport trunk allowed vsan 1, 20

- A. Option A
- B. Option B
- C. Option C
- D. Option D

Answer: C

NEW QUESTION 160

The Cisco UCS blade chassis must send SNMPv3 traps to a network monitoring system. The SNMP trap messages should be authenticated and have protection from closure. Which SNMP security privileged level should be configured?

- A. noPriv
- B. auth
- C. noAuth
- D. priv

Answer: D

NEW QUESTION 162

Which protocol does Cisco Hyperflex use to share data among nodes in a VMware vSphere environment?

- A. CIFS

- B. FCoE
- C. SMB
- D. NFS

Answer: D

NEW QUESTION 166

A network architect must design an automation solution to initially support networking and also support the server infrastructure in the future. To keep configuration consistency, the network team requires a solution that enforces the desired state of the network and reverts any manual configuration. Which solution meets these goals?

- A. NX-API
- B. Ansible
- C. Terraform
- D. Puppet

Answer: D

NEW QUESTION 167

Drag and drop the characteristics from the left onto the correct storage systems on the right.

expensive and complex to manage

moderately expensive and simple to configure

most resilient, highly scalable, and high-performance storage

appliance providing file system access

lacks scalability, performance, and advanced features

NAS

SAN

- A. Mastered
- B. Not Mastered

Answer: A

Explanation:

Graphical user interface Description automatically generated with medium confidence
2,4,5 – NAS 1,3 - SAN

NEW QUESTION 169

An engineer requires the Cisco Fabric Services to distribute NTP configuration only to the members within the scope of a VSAN that belongs to a Cisco Unified Network. Which scope distribution must be selected to meet this requirement?

- A. Logical scope
- B. Physical scope
- C. Uncoordinated scope
- D. Coordinated scope

Answer: A

NEW QUESTION 170

A network architect considers a Cisco HyperFlex design solution for a company. The proposed solution is for a virtual environment that is not performance-sensitive, but the solution must have high storage capacity and a low cost. Which Cisco HyperFlex storage configuration should be used?


- A. All-Flash
- B. Hybrid
- C. All-SAN
- D. All-NVMe

Answer: B

Explanation:

<https://www.cisco.com/c/en/us/products/collateral/hyperconverged-infrastructure/hyperflex-hx-series/white-pap> Hybrid contains HDD for capacity.

NEW QUESTION 173
Refer to the exhibit.



```
hostname N9K-1
vpc domain 100
  role priority 100
  peer-keepalive destination 10.10.10.2
interface port-channel100
  switchport mode trunk
  spanning-tree port type network
vpc peer-link
interface Ethernet1/1
  switchport mode trunk
interface Ethernet1/2
  switchport mode trunk
interface mgmt0
  vrf member management
  ip address 10.10.10.1/24

hostname N9K-2
vpc domain 100
  role priority 90
  peer-keepalive destination 10.10.10.1
interface port-channel100
  switchport mode trunk
  spanning-tree port type network
vpc peer-link
interface Ethernet1/1
  switchport mode trunk
interface Ethernet1/2
  switchport mode trunk
interface mgmt0
  vrf member management
  ip address 10.10.10.2/24
```

Which action completes the vPC domain implementation?

- A. Allow VLANs on the vPC peer link member interfaces.
- B. Include the VRF management on the vPC domain.
- C. Configure the system MAC on the vPC domain.
- D. Add the vPC member ports to the vPC channel group.

Answer: D

NEW QUESTION 175

Which Cisco UCS Manager XML encoded backup type must be used to back up user names, roles, and service profiles?

- A. Full State Configuration
- B. Logical Configuration
- C. All Configuration
- D. System Configuration

Answer: C

NEW QUESTION 179

Drag and drop the keywords onto the URL request to collect all the subnets configured under tenant Production using a REST API. Not all options are used.

https://{apic_ip}/api/ /uni/tn-Production.json?

= &

=fvSubenet

target-subtree-class

query-target-filter

query-target

children

subtree

class

mo

- A. Mastered
- B. Not Mastered

Answer: A

Explanation:
Graphical user interface, text Description automatically generated

NEW QUESTION 182

Which feature is supported with an In-Service Software Upgrade on a Cisco Nexus 9000 Series Switch?

- A. configuration changes during an upgrade
- B. nondisruptive upgrades via nonstop forwarding
- C. zero downtime downgrades via dual supervisor modules
- D. upgrades to Individual modules and line cards

Answer: B

NEW QUESTION 186

An engineer must implement private VLANs for a group of Cisco UCS 8-Series servers. The primary VLAN is present, But the secondary VLAN must Be added to Both fabrics. Which configuration set accomplishes this task?

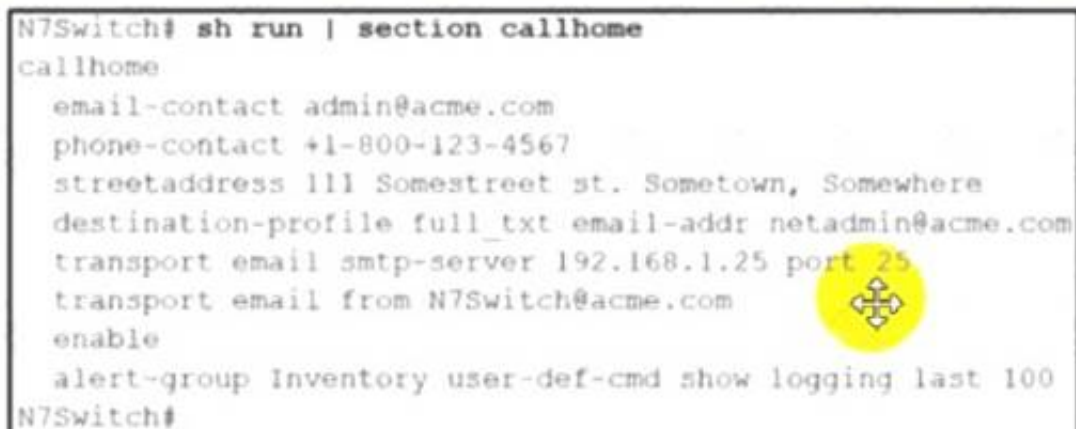
- ☐ UCS-A# scope eth-uplink
UCS-A /eth-uplink # create vlan vlan1981 1981
UCS-A /eth-uplink/vlan* # set sharing none
- ☐ UCS-A# scope eth-uplink
UCS-A /eth-uplink # create vlan vlan1981 1981
UCS-A /eth-uplink/vlan* # set sharing isolated
- ☐ UCS-A# scope eth-uplink
UCS-A /eth-uplink # scope fabric a
UCS-A /eth-uplink/fabric # create vlan vlan1981 1981
UCS-A /eth-uplink/fabric/vlan* # set sharing private
- ☒ UCS-A# scope eth-uplink
UCS-A /eth-uplink # scope fabric a
UCS-A /eth-uplink/fabric # create vlan vlan1981 1981
UCS-A /eth-uplink/fabric/vlan* # set sharing secondary

- A. Option A
- B. Option B
- C. Option C
- D. Option D

Answer: B

NEW QUESTION 191

Refer to the exhibit.



```
N7Switch# sh run | section callhome
callhome
email-contact admin@acme.com
phone-contact +1-800-123-4567
streetaddress 111 Somestreet st. Sometown, Somewhere
destination-profile full_txt email-addr netadmin@acme.com
transport email smtp-server 192.168.1.25 port 25
transport email from N7Switch@acme.com
enable
alert-group Inventory user-def-cmd show logging last 100
N7Switch#
```

A network engineer is configuring the Smart Call Home feature on a Cisco Nexus Series Switch. An email must be generated that contains the last 100 lines of the log every time a new piece of hardware is inserted into the chassis. Which command must be added to the configuration to receive the email?

- A. alert-group Linecard-Hardware user-def-cmd show logging last 100
- B. destination-profile Operations alert-group Inventory
- C. destination-profile Operations message-level 2
- D. alert-group Operations user-def-cmd show logging last 100

Answer: A

NEW QUESTION 196

A network engineer must migrate a Cisco WSA virtual appliance from one physical host to another physical host by using VMware vMotion. What is a requirement for both physical hosts?

- A. The hosts must run Cisco AsyncOS 10.0 or greater.
- B. The hosts must have access to the same defined network.
- C. The hosts must run different versions of Cisco AsyncOS.
- D. The hosts must use a different datastore than the virtual appliance

Answer: B

NEW QUESTION 200

An engineer must perform a nondisruptive software upgrade on a dual supervisor Cisco Nexus 7000 series switch. What is the cause of the upgrade being disruptive?

- A. The show install all impact command is not issued before the upgrade
- B. The kickstart image is installed by using the Install all kickstart image system image command
- C. Attempt to simultaneously upgrade more than three cards
- D. Change to the configuration settings or the network connections during the upgrade process

Answer: D

NEW QUESTION 205

An engineer must implement the FCoE on the Cisco Nexus 9000 Series Switch-based infrastructure. The deployment will contain dual-homed fabric extenders and must support jumbo frames with port channels. Which two sets of actions complete the configuration? (Choose two.)

- ☒ Configure the interface with mtu 9516.
Disable the feature NPIV.
- ☒ Create a virtual Fibre Channel interface.
Bind vFC to physical interface.
- ☐ Create a FCoE switch profile.
Enable config sync.
- ☐ Create a dedicated VSAN for FEX.
Bind VSAN to FEX uplinks.
- ☐ Execute fcoe enable-fex.
Configure FEX uplinks with mtu 9216.

- A. Option A
- B. Option B
- C. Option C
- D. Option D
- E. Option E

Answer: BE

NEW QUESTION 210

Refer to the exhibit.

```
UCS-A# scope adapter 1/1/1
UCS-A# /chassis/server/adapter # show image
Name                               Type      Version    State
-----
ucs-m81kr-vic.2.2.1b.bin           Adapter   2.2(1b)    Active

UCS-A# /chassis/server/adapter # update firmware 2.2(1b)
UCS-A# /chassis/server/adapter* # activate firmware 2.2(1b)
set-startup-only
UCS-A# /chassis/server/adapter* # commit-buffer
UCS-A# /chassis/server/adapter #
```

What is the result of this series of commands?

- A. It reboots the server immediately.
- B. It verifies the firmware update on the server.
- C. It activates the firmware on the next adapter boot.
- D. It updates the firmware on adapter 1/1/1 immediately.

Answer: C

Explanation:

https://www.cisco.com/c/en/us/td/docs/unified_computing/ucs/ucs-manager/CLI-User-Guides/Firmware-Mgmt/ Graphical user interface, text, application, email
Description automatically generated

Step 6	UCS-A /chassis/server/adapter # activate firmware version-num [set- startup-only]	Activates the selected firmware version on the adapter. Use the set-startup-only keyword if you want to move the activated firmware into the pending-next-boot state and not immediately reboot the server. The activated firmware does not become the running version of firmware on the adapter until the server is rebooted. You cannot use the set-startup-only keyword for an adapter in the host firmware package.
--------	--	---

NEW QUESTION 211

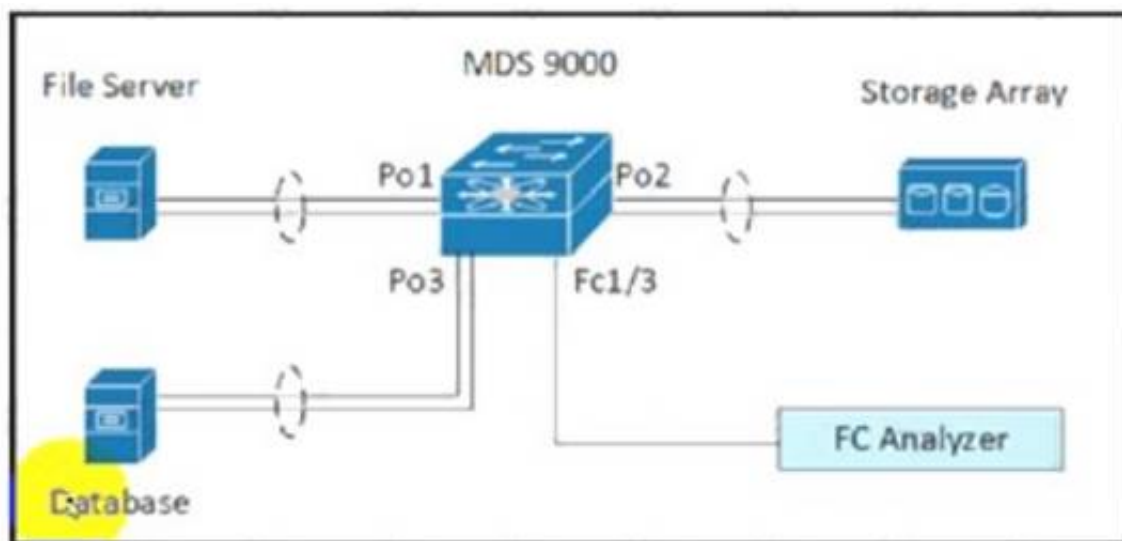
An engineer must optimize ARP responses and reduce unnecessary ARP broadcasts over the VXLAN/EVPN fabric. Which action accomplishes these tasks?

- A. Configure ip proxy-arp under the VLAN SVI associated with the VXLAN VNI.
- B. Configure ip proxy-arp within the VXLAN VNI configuration under the VTEP NVE interface.
- C. Configure suppress-arp within the VXLAN VNI configuration under the VTEP NVE interface.
- D. Configure suppress-arp under the VLAN SVI associated with the VXLAN VNI.

Answer: C

NEW QUESTION 216

Refer to the exhibit.



```
interface port-channel 1
  channel mode active
interface port-channel 2
  channel mode active
interface fcl/1-2
  channel-group 1
  no shutdown
interface fcl/4-5
  channel-group 2
  no shutdown
interface fcl/7-8
  channel-group 3
  no shutdown
vsan database
  vsan 100 name fabric1
  vsan 100 interface port-channel 1
  vsan 100 interface port-channel 2
  vsan 100 interface port-channel 3
```

A storage engineer must monitor the traffic from the file server to the FC analyzer. The file server and the database use the same storage array. Which configuration must be applied to the Cisco MDS 9000 Series Switch to accomplish this goal?

- ☐ MDS-9000(config)# span session 1
MDS-9000(config-span)# destination interface fc1/3
MDS-9000(config-span)# source interface port-channel 1
- ☐ MDS-9000(config)# span session 1
MDS-9000(config-span)# destination interface port-channel 2
MDS-9000(config-span)# source interface vsan 100
- ☐ MDS-9000(config)# span session 1
MDS-9000(config-span)# destination interface port-channel 2
MDS-9000(config-span)# source interface fc1/1
- ☐ MDS-9000(config)# span session 1
MDS-9000(config-span)# destination interface vsan 100
MDS-9000(config-span)# source interface port-channel 1

- A. Option A
- B. Option B
- C. Option C
- D. Option D

Answer: B

NEW QUESTION 218

An administrator needs to configure an automated policy to shut down a link when a given threshold is exceeded on MDS switch. Which feature needs to be used?

- A. Scheduler
- B. RMON
- C. EEM
- D. Call Home

Answer: C

Explanation:

https://www.cisco.com/c/en/us/td/docs/switches/datacenter/mds9000/sw/6_2/configuration/guides/interfaces/nx-os/cli_interfaces/intf.html

NEW QUESTION 219

An engineer evaluates a UI-based infrastructure management system capable of monitoring and deploying standardize VXLAN BGP EVPN deployments. The storage administrator else need the solution to manage the cisco MDS 9090 series Switches. Which solution meets these requirements?

- A. Intersight
- B. UCSD
- C. Tetratation
- D. DCONM

Answer: D

NEW QUESTION 222

A network engineer must configure a Cisco MDS switch to use the local user database for console access if all AAA servers are unreachable. Which configuration should be applied to complete this task?

- A. aaa authentication login default fallback error local
- B. aaa authentication login console fallback error local
- C. aaa authentication login default local
- D. aaa authentication login console local

Answer: B

NEW QUESTION 226

Which MAC address is an HSRP version 2?

- A. 0100.5E7F.FFFF
- B. 3799.9943 3000
- C. 0000.0C9F.F0C8
- D. 0000.0C07.AC1H

Answer: C

NEW QUESTION 227

APIC EPG Resolution Immediacy is set to "Immediate" Which statement is true about the Deployment Immediacy for VMM domains associated to EPGs?

- A. The "Immediate" and "On demand" options require a port group to be created on the VDS.
- B. If "On demand" is selected, the policy is programmed in the hardware only when the APIC detects a VM created in the EPG.
- C. If "On demand" is selected the policy is programmed in the hardware only when the first packet is received through the data path.
- D. If "immediate" is selected the policy is programmed in the hardware as soon as the leaf is booted.

Answer: C

Explanation:

"Deployment Immediacy On demand — Specifies that the policy is programmed in the hardware policy CAM only when the first packet is received through the data path."

https://www.cisco.com/c/en/us/td/docs/switches/datacenter/aci/apic/sw/1-x/aci-fundamentals/b_ACI-Fundament

NEW QUESTION 232

A network engineer must perform a backup and restore of the Cisco Nexus 5000 Series Switch configuration. The backup must be made to an external backup server. The only protocol permitted between the Cisco Nexus Series switch and the backup server is UDP. The backup must be used when the current working configuration of the switch gets corrupted. Which set of steps must be taken to meet these requirements?

- A. 1. Perform a running-config backup to an SFTP serve
- B. 2. Copy backup-config from the SFTP server to the running-config file.
- C. 1. Perform a startup-config backup to a TFTP serve
- D. 2. Copy backup-config from the backup server to the running-config file.
- E. 1. Perform a running-config backup to an SCP serve
- F. 2. Copy running-config in the boot flash to the running-config file.
- G. 1. Perform a startup-config backup to an FTP serve
- H. 2. Copy startup-config in the boot flash to the running-config file.

Answer: B

Explanation:

TFTP runs on UDP 69 = Is correct

NEW QUESTION 235

An engineer must configure remote authentication on a Cisco UCS system. The user password must be encrypted before it is sent to the authentication server. The company security policy requires the server to be based on an open standard. Drag and drop the UCS CLI AAA configuration commands from the left into the order in which they must be implemented on the right. Not all commands are used.



- A. Mastered
 B. Not Mastered

Answer: A

Explanation:

UCS-A# scope security
 UCS-A /security # scope radius
 UCS-A /security/radius # create server radiusserv7
 UCS-A /security/radius/server* # set key
 UCS-A /security/radius/server* # commit-buffer

NEW QUESTION 240

Which two statements about the process of performing an EPLD upgrade on a Cisco MDS 9000 series Switch are true? (Choose two.)

- A. If an upgrade is interrupted, the upgrade continues after a connection is restored.
 B. The upgrade can be performed from the standby supervisor module.
 C. The active supervisor can be upgraded.
 D. Modules must be online to be upgraded.
 E. The Upgrade process disrupts only the module that is being upgraded.

Answer: DE

Explanation:

https://www.cisco.com/c/en/us/td/docs/switches/datacenter/mds9000/sw/8_x/release_notes/epld/epld_rn_8x.htm Graphical user interface, text, application, email Description automatically generated

"On a Cisco Nexus 9500 platform switch that has two supervisor modules, upgrade the EPLDs for the standby supervisor and then switch the active supervisor to the standby mode to upgrade its EPLDs. The supervisor switchover is not disruptive to traffic on Cisco Nexus 9500 platform switches. On a switch that has only one supervisor module, you can upgrade the active supervisor, but this will disrupt its operations during the upgrade."

Guidelines and Limitations

When you upgrade or downgrade the EPLDs, observe the following guidelines and limitations:

- You can upgrade each module only when it is online. The EPLD upgrade is only disruptive to the module being upgraded.
- If you interrupt an EPLD upgrade or downgrade, the module must be upgraded again.
- In Cisco MDS 9000 Director Switches, EPLD upgrade or downgrade can only be executed from the active supervisor module. To upgrade the supervisor EPLDs nondisruptively, upgrade the standby supervisor and then switchover. After the new standby supervisor is online its EPLDs can be upgraded.
- In Cisco MDS 9000 Series Fabric Switches, be sure to specify 1 as the module number. The switch must be power cycled for the EPLDs to start running the new code.

Under Installation guidelines. https://www.cisco.com/c/en/us/td/docs/switches/datacenter/nexus9000/sw/92x/epld-rn/nxos_n9K_epldRN_924.html

NEW QUESTION 241

An engineer changed a configuration and must perform a rollback. Which statement applies to a Cisco Nexus 5600 Series switch?

- A. Errors are skipped when an atomic rollback type is triggered.
 B. A user who is assigned to the network-operator user role can perform a rollback.
 C. The configuration rollback functionality is disabled when FCoE is enabled.
 D. A system checkpoint is generated automatically when the running configuration is saved to NVRAM.

Answer: C

Explanation:

https://www.cisco.com/c/en/us/td/docs/switches/datacenter/nexus5000/sw/system_management/503_n1_1/cisco_n5k_system_mgmt_cg_rel_503_n1_1_chapter11.pdf
<https://www.google.com/url?sa=t&source=web&rct=j&url=https://www.cisco.com/c/en/us/td/docs/switches/>

datacenter/nexus5000/sw/system_management/503_n1_1/
cisco_n5k_system_mgmt_cg_rel_503_n1_1_chapter11.pdf&ved=2ahUKEwjQ8ubTuK3xAhWm3jgGHZ9gB
0oQFjAAegQIBRAC&usg=AOvVaw2j0nnvXiChAoVoovX2Qx0g

NEW QUESTION 245

A host EPG Client wants to talk to a webserver in EPG Web. A contract with default settings is defined between EPG Client and EPG Web, which allows TCP communication initiated by the client toward the webserver with TCP destination port 80. Which statement is true?

- A. If EPG Web is made a preferred group member, a contract between EPG Client and EPG Web is no longer required for the host in EPG Client to reach the webserver in EPG Web.
- B. If vzAny is configured to consume and provide a "deny all" contract, traffic between EPG Client and EPG Web is no longer allowed.
- C. The host in EPG Client is allowed to connect to TCP destination port 80 on the webserver in EPG Web. The webserver will not be allowed to initiate a separate TCP connection to a host port with TCP source port 80.
- D. The host in EPG Client is allowed to connect to TCP destination port 80 on the webserver in EPG Web. The webserver is allowed to initiate a separate TCP connection to a host port with TCP source port 80.

Answer: D

Explanation:

Apply Both Direction and Reverse Filter Port in the subject for the filter. These two options are by default enabled... This means that if the provider EPG initiates traffic toward the consumer EPG, the Cisco ACI fabric allows it for any destination ports if the source port is 80.

https://www.cisco.com/c/en/us/td/docs/switches/datacenter/aci/apic/sw/1-x/Operating_ACI/guide/

[b_Cisco_Operating_ACI/b_Cisco_Operating_ACI_chapter_01000.html](#) Reverse filter and apply in both directions is default.

If a filter allows traffic from any consumer port to a provider port (e.g. 8888), if reverse port filtering is enabled and the contract is applied both directions (say for TCP traffic), either the consumer or the provider can initiate communication. The provider could open up a TCP socket to the consumer using port 8888, whether the provider or consumer sent traffic first. https://www.cisco.com/c/en/us/td/docs/switches/datacenter/aci/apic/sw/1-x/Operating_ACI/guide/

[b_Cisco_Operating_ACI/b_Cisco_Operating_ACI_chapter_01000.html](#)

NEW QUESTION 248

Refer to the exhibit. A network engineer must configure an authentication solution for Cisco UCS with these conditions:

- Two-factor authentication must be enabled for all UCS user authentication.
- All AAA packets must be encrypted and use TCP port 49 to establish communication. Which set of actions needs these requirements?

- A. Create the LDAP provider. Change the LDAP group rule in an LDAP provider.
- B. Create the RADIUS group mapping. Change the RADIUS group rule in a RADIUS provider.
- C. Remove the LDAP provider. Create a TACACS+ provider in user management.
- D. Delete the LDAP group mapping. Create a RADIUS provider in user management.

Answer: C

NEW QUESTION 249

An engineer needs to perform a backup of user roles and locales from Cisco UCS Manager to replicate the setting to a different fabric interconnect. The engineer wants to review the file before importing it to a target fabric interconnect. Which backup type must be selected to meet these requirements?

- A. all configuration
- B. system configuration
- C. logical configuration
- D. full state

Answer: B

Explanation:

https://www.cisco.com/c/en/us/td/docs/unified_computing/ucs/ucs-manager/GUI-User-Guides/Admin-Managem

- **System configuration**—An XML file that includes all system configuration settings such as usernames, roles, and locales. You can use the file generated from this backup to import these configuration settings to the original fabric interconnect or to a different fabric interconnect. You cannot use this file for a system restore.

NEW QUESTION 250

Which server policy is used to install new Cisco IMC software on a server?

- A. host firmware policy
- B. hypervisor firmware policy
- C. BIOS software policy
- D. Cisco IMC software policy

Answer: A

Explanation:

[https://www.cisco.com/c/en/us/td/docs/unified_computing/ucs/ucs-manager/CLI-User-Guides/Firmware-](https://www.cisco.com/c/en/us/td/docs/unified_computing/ucs/ucs-manager/CLI-User-Guides/Firmware-Mgmt/4-0/b_UCSM_CLI_Firmware_Management_Guide_4-0/b_UCSM_CLI_Firmware_Management_Guide_4-0_chapter_01.html#)

[Mgmt/4-0/b_UCSM_CLI_Firmware_Management_Guide_4-0/b_UCSM_CLI_Firmware_Management_Guide_4-0_chapter_01.html#](#)

You can use host firmware packages by defining a host firmware policy as an attribute of a service profile template, which is an updating template. Any change made to the service profile template is automatically made to its instantiated service profiles. Subsequently, the servers associated with the service profiles are also upgraded in parallel with the firmware version.

Graphical user interface, text, application Description automatically generated

The Cisco UCS domains are categorized into domain groups in Cisco UCS Central for management purposes. You can manage firmware for each domain group separately at the domain group level or for all domain groups from the domain group root. Cisco UCS Central provides you the option to manage the following Cisco UCS domain firmware packages:

- **Capability Catalog**— One capability catalog per domain group. All Cisco UCS domains registered to a particular domain group will use the capability catalog defined in the domain group.
- **Infrastructure Firmware**— One infrastructure firmware policy per domain group. All Cisco UCS domains registered to a particular domain group will use the same Infrastructure firmware version defined in the domain group.
- **Host Firmware**— You can have more than one **host firmware policy** for the different host firmware components in a domain group. The Cisco UCS domains registered in the domain group will be able to choose any defined **host firmware policy** in the group. Cisco UCS Central provides you the option to upgrade the host firmware globally to all Cisco UCS domains in a domain group at the same time.



Note

For more information on managing firmware in Cisco UCS Central, see the Firmware Management chapters in the *Cisco UCS Central Administration Guide* and *Cisco UCS Central CLI Reference Manual*.

NEW QUESTION 252

An engineer must configure the remote SSH management connectivity for Cisco Nexus 9000 Series Switches to meet these requirements

- The connectivity must be permitted from a jump host with an IP address of 10.10.10.10/24
- All switches must be permitted to connect via SSH to other devices from the subnet of 10.20.20.0/24. Which configuration set accomplishes these requirements?

```

line vty
ip access-class acl-1 out
ip access-class acl-2 in

ip access-list acl-1
permit ip 10.10.10.10/32 any
ip access-list acl-2
permit tcp 10.20.20.0/24 any

line vty
ip access-class acl-1 in
ip access-class acl-2 out

ip access-list acl-1
permit tcp 10.10.10.10/32 any eq 22
ip access-list acl-2
permit tcp 10.20.20.0/24 any

line vty
ip access-class acl-1 in
ip access-class acl-2 in

ip access-list acl-1
permit ip 10.10.10.10/32 any
ip access-list acl-2
permit tcp 10.20.20.0/24 any

line vty
ip access-class acl-1 in
ip access-class acl-2 in

ip access-list acl-1
permit tcp 10.10.10.10/32 any eq 22
ip access-list acl-2
permit tcp 10.20.20.0/24 any
  
```

- A. Option A
- B. Option B
- C. Option C
- D. Option D

Answer: B

NEW QUESTION 253

Refer to the exhibit.

```
vlan 10
 fcoe vsan 10

interface ethernet 1/3
 spanning-tree port type edge trunk
 switchport mode trunk
 switchport trunk allowed vlan 1, 10
```

An engineer must configure FCoE on a Cisco Nexus switch. Which two command sets complete this configuration? (Choose two.)

- ☒ interface vfc 10
bind interface fcoe-vfc 1/3
no shut
- ☐ vsan database
vsan 10 interface ethernet 1/3
- ☒ interface fcoe 10
bind interface ethernet 1/3
no shut
- ☐ interface vfc 10
bind interface ethernet 1/3
no shut
- ☐ vsan database
vsan 10 interface vfc 10

- A. Option A
- B. Option B
- C. Option C
- D. Option D
- E. Option E

Answer: DE

Explanation:

```
switch# configure terminal
```

```
switch(config)# vsan database
```

```
switch(config-vsan)# vsan 2 interface vfc 4
```

This example shows how to bind a virtual Fibre Channel interface to an Ethernet interface:

```
switch# configure terminal
```

```
switch(config)# interface vfc 4
```

```
switch(config-if)# bind interface ethernet 1/4
```

https://www.cisco.com/c/en/us/td/docs/switches/datacenter/nexus5000/sw/fcoe/421_n1_1/b_Cisco_n5k_fcoe_config_gd_re_421_n1_1/Cisco_n5k_fcoe_config_gd_re_421_n1_1_chapter4.html

NEW QUESTION 255

A POAP-enabled Cisco Nexus switch will not enter POAP mode. Which two conditions should be verified? (Choose two.)

- A. Bootflash must contain a special directory named POAP with poap.py file.
- B. The switch is in bootup process.
- C. No startup configuration is available.
- D. The license file is missing on the switch.
- E. No Cisco NX-OS image is present on the bootflash.

Answer: BC

Explanation:

POAP is an automatic provisioning and zero-touch deployment feature that assists device owners in the initial deployment and configuration of Nexus switches. The feature works by checking for a local configuration script. If the script has been deleted, the switch has been reset to factory settings, or this is the first boot-up, the POAP daemon will connect to a preset list of servers to download an initial configuration file. To perform this operation, the switch must first obtain an IP address from a local DHCP server. POAP configuration settings can also be passed through the DHCP response. Which conditions should be verified, so they need to be TRUE. Like no startup (A) and bootup (B). C means that it needs to miss a license file and E means it needs to miss an NX-OS image.

NEW QUESTION 259

What is a benefit of independent resource scaling in Cisco HyperFlex hybrid architecture?

- A. flexible expansion of compute, caching, and capacity
- B. remote booting of converged servers
- C. multivendor converged node hardware support
- D. support for compute nodes with third-party storage

Answer: D

NEW QUESTION 261

An engineer is seeking the most optimal on demand CPU performance while configuring the BIOS settings of a UCS C-series rack mount server. What setting will accomplish this goal?

- A. C0/C1 state
- B. C6 Retention
- C. C2 state
- D. C6 non-Retention

Answer: B

NEW QUESTION 262

A network engineer is asked to describe the cloud infrastructure models from the perspective of their operation and access to resources. Drag and drop the descriptions from the left onto the appropriate.

Provisioned for open use.	Private cloud
At least two or more separate cloud infrastructures are connected together to facilitate hosted data and application portability.	Community cloud
Owned, managed, and operated by one or more organizations or teams.	Public cloud
Owned, managed, and operated by a single organization.	Hybrid cloud

- A. Mastered
- B. Not Mastered

Answer: A

Explanation:

Private Cloud: owned, managed, and operated by a single organization.
Community Cloud: Owned, managed, and operated by one or more organizations or teams. Public Cloud: Provisioned for open use.
Hybrid Cloud: At least two or more separate cloud infrastructures are connected together to facilitate hosted data and application portability.

NEW QUESTION 266

Refer to the exhibit.


```
Start time: Mon Apr 15 09:23:01 2019
Last election time: Mon Apr 15 09:24:24 2019
A: UP, PRIMARY
B: UP, SUBORDINATE
A: memb state UP, lead state PRIMARY, mgmt services state: UP
B: memb state UP, lead state SUBORDINATE, mgmt services state: UP
heartbeat state PRIMARY_OK
INTERNAL NETWORK INTERFACES:
eth1, UP
eth2, UP
HA NOT READY
No device connected to this Fabric Interconnect
```

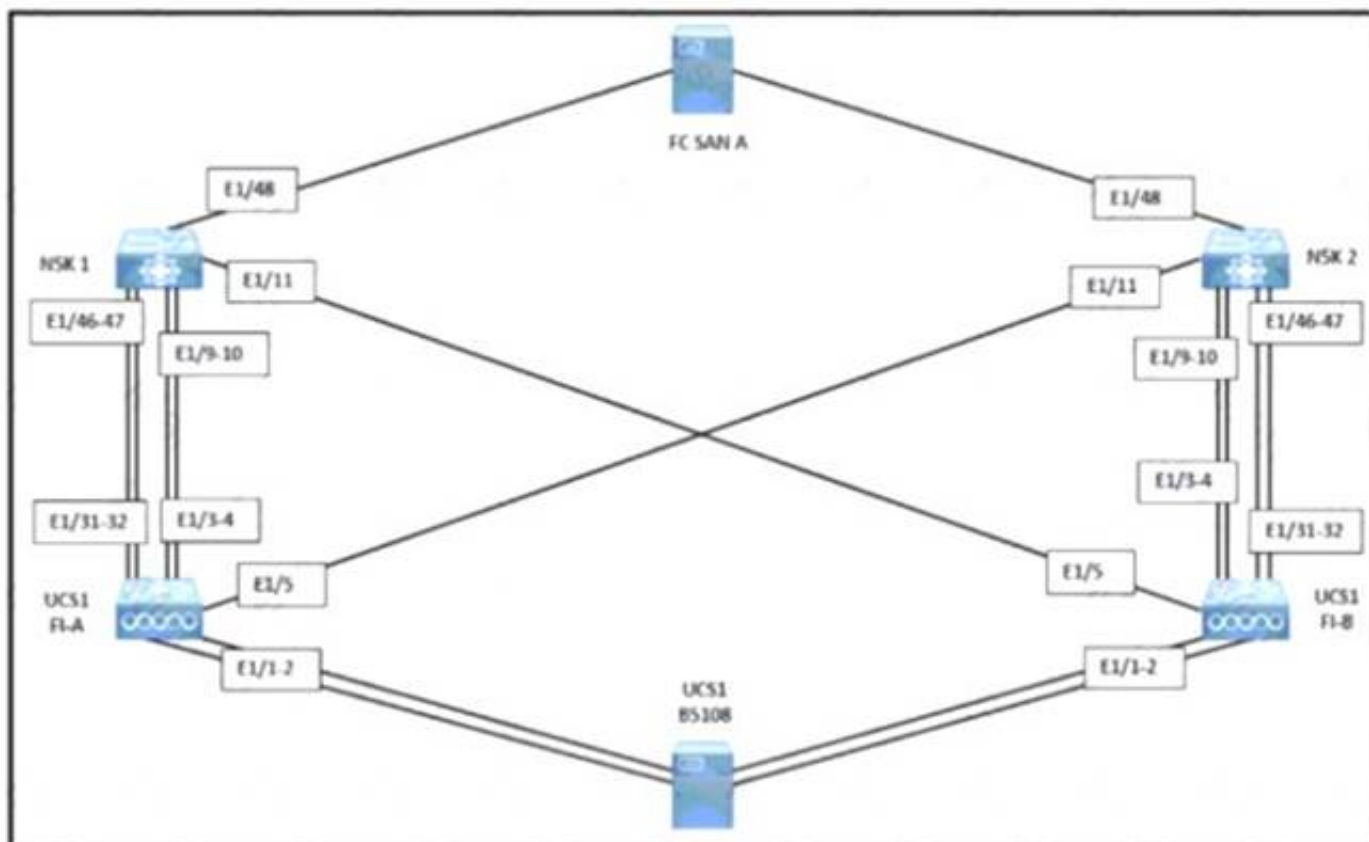
What be connected to clear the HA NOT READY status?

- A. server chassis
- B. network uplinks
- C. management ports
- D. Layer 1-Layer 2 ports

Answer: A

NEW QUESTION 269

Refer to the exhibit.



A network engineer must configure port E1/31- 32 to forward only storage server traffic of VLAN 200 on Cisco fabric interconnects A and B. Port E1/31- 32 is not reserved for any other traffic. Which port type must be configured to accomplish this goal?

- A. unified uplink
- B. uplink
- C. FCoE uplink
- D. FCoE storage

Answer: C

NEW QUESTION 273

An engineer needs a utility to translate traditional Nexus CLI inputs and generate Python code using XML and JSON message formats. The solution needs to be available on a Nexus 7700 series switch. Which utility should be used?

- A. NX-OS JSON-RPC
- B. NX-API Sandbox
- C. Guest Shell for NX-OS
- D. Open NX-OS

Answer: B

Explanation:

<https://developer.cisco.com/docs/nx-os/#!nx-api-cli-developer-sandbox>

NEW QUESTION 278

Refer to the exhibit.


```
int fc1/1-2
switchmode rate dedicated
channel-group 100 force
no shut

int san-port-channel 100
switchport trunk allowed vsan 1
switchport trunk allowed vsan add 100
```

An engineer is connecting a Cisco MDS 9700 Series Multilayer Director to a downstream Cisco Nexus 5672UP switch. Which command set must be used to complete the configuration?

A)

```
int san-port-channel 100
switchport mode te
switchport trunk mode off
channel mode on
```

B)

```
int san-port-channel 100
switchport mode te
switchport trunk mode auto
channel mode on
```

C)

```
int san-port-channel 100
switchport mode e
switchport trunk mode on
channel mode active
```

D)

```
int port-channel 100
switchport mode e
switchport trunk mode on
channel mode active
```

- A. Option A
- B. Option B
- C. Option C
- D. Option D

Answer: A

NEW QUESTION 283

An engineer must implement access control for Cisco UCS Manager. The configuration must meet these requirements.

- All users and user groups must be configured using Active Directory.
- User1 must have full access to the storage operations configuration.

Which action must be performed on Cisco UCS to meet the requirements?

- A. Create a custom role for the user and RADIUS for the role-mapping for Active Directory.
- B. Execute a built-in role for the user and LDAP for the role-mapping for Active Directory.
- C. Create a custom role for the user and LDAP for the role-mappings for Active Directory.
- D. Execute a built-in role for the user and RADIUS for the role-mapping for Active Directory.

Answer: B

NEW QUESTION 287

An administrator is implementing DCNM so that events are triggered when monitored traffic exceeds the configured present utilization threshold. The requirement is to configure a maximum limit of 39860437 bytes that applies directly to the statistics collected as a ratio of the total link capacity. Which DCNM performance monitoring configuration parameter must be implemented to achieve this result?

- A. Absolution Values
- B. Baseline
- C. Util%
- D. Per port Monitoring

Answer: A

NEW QUESTION 290

A customer asks an engineer to develop an orchestration solution to automate repetitive tasks. The customer operations team must integrate the tool with its existing automation framework. The customer asks for the tool to support these requirements:

- The customer's security requirements mandate the use of SSH transport.
- No extra software must be installed on the managed systems.
- The support staff has limited knowledge of scripting languages, so the solution must be easy to read and use declarative language.

Which solution meets these requirements?

- A. PowerShell
- B. Ansible
- C. Chef
- D. Puppet

Answer: B

NEW QUESTION 293

An engineer must generate a Cisco UCS Manager backup. The backup should include all logical configuration and contain all system and logical configuration settings. Which backup type should be selected to meet these requirements?

- A. system configuration
- B. logical configuration
- C. all configuration
- D. full state

Answer: C

NEW QUESTION 296

An engineer has a primary fabric that is named UCS-A and a secondary fabric that is named UCS-B. A certificate request that has a subject name of sjc2016 for a keyring that is named kr2016 needs to be created. The cluster IP address is 10.68.68.68.

Which command set creates this certificate request?

- A. UCS-A # scope keyring kr2016UCS-A /keyring # create certreq 10.68.68.68 sjc2016UCS-A /keyring* # commit-buffer
- B. UCS-B # scope keyring kr2016UCS-B /keyring # create certreq ip 10.68.68.68 subject-name sjc2016UCS-B /keyring* # commit-both
- C. UCS-B# scope securityUCS-B /security # scope keyring kr2016UCS-B /security/keyring # set certreq 10.68.68.68 sjc2016UCS-B /security/keyring* # commit-both
- D. UCS-A# scope securityUCS-A /security # scope keyring kr2016UCS-A /security/keyring # create certreq ip 10.68.68.68 subject-name sjc2016UCS-A /security/keyring* # commit-buffer

Answer: D

Explanation:

https://www.cisco.com/c/en/us/td/docs/unified_computing/ucs/ucs-manager/CLI-User-Guides/Admin-Management/4-0/b_Cisco_UCS_Manager_CLI_Administration_Mgmt_Guide_4-0/b_Cisco_UCS_Manager_CLI_Administration_Mgmt_Guide_4-0_chapter_0110.html

NEW QUESTION 300

An engineer implements SPAN configuration on an Nexus 5000 series switch. Which two commands are necessary to complete the SPAN session configuration? (Choose two)

```
N5K-Core# configure terminal
Enter configuration commands, one per line. End with CNTL/Z.
N5K-Core(config)# interface fc2/1
N5K-Core(config-if)# switchport speed 4000
N5K-Core(config-if)# no shutdown
N5K-Core(config)# interface fc2/2
N5K-Core(config-if)# no shutdown
N5K-Core(config)# monitor session 1
N5K-Core(config-monitor)# source interface fc2/1
N5K-Core(config-monitor)# destination interface fc2/2
N5K-Core(config-monitor)# no shutdown
```

- A. Configure the switchport monitor under interface fc2/2
- B. Configure the switchport mode SD under interface tc2/1.

- C. Configure switchport speed 4000 under interface fc2/2.
- D. Configure session type fc under monitor session 1.
- E. Configure the switchport mode SD under interface fc2/2.

Answer: CE

Explanation:

<https://www.cisco.com/c/en/us/td/docs/switches/datacenter/nexus5000/sw/configuration/guide/cli/CLIConfigurationGuide/Span.html>

NEW QUESTION 304

An engineer must configure a control plane policy on a Cisco Nexus 9000 Series Switch that is located at IP 192.168.20.1 that moots those requirements

- Only HTTP, RDP, and ICMP traffic is permitted from subnet 192.168.10.0/24.
- The committed information rate must be 54000 pps.
- The burst size must be 128 packets.
- Any other traffic must be dropped.

Drag and drop the code snippets from the bottom onto the blanks in the code on the top to complete the configuration. Not all code snippets are used

```
ip access-list permithosts
  permit tcp 192.168.10.0/24 
  permit tcp 192.168.10.0/24 host 192.168.20.1 eq 3389
  permit icmp 192.168.10.0/24 host 192.168.20.1

class-map type control-plane match-any hostscmap
  match 

policy-map type control-plane hostspmap
  

  police cir 54000 pps bc 128 packets 
```

host 192.168.20.1 eq 443

class hostscmap

conform transmit violate drop

access-group name permithosts

class permithosts

conform transmit violate drop

- A. Mastered
- B. Not Mastered

Answer: A

Explanation:

Text Description automatically generated

NEW QUESTION 305

A Cisco UCS user called "Employee1" accidentally changed the boot policy of the Cisco UCS server at the Cisco UCS Manager root level. This change impacted all service profiles and their storage connectivity was lost. The system administrator wants to prevent this issue from recurring in the future. The new security policy mandates that access must be restricted up to the organization level and prevent other users from modifying root policies. Which action must be taken to meet these requirements?

- A. Modify the privilege level assigned to the user
- B. Define a custom user role and assign it to users
- C. Assign the user "Employee1" the network-operator role
- D. Assign users to a specific Cisco UCS locale

Answer: D

Explanation:

https://www.cisco.com/c/en/us/td/docs/unified_computing/ucs/ucs-manager/GUI-User-Guides/Admin-Managem

Locales

User Locales

You can assign a user to one or more locales. Each locale defines one or more organizations (domains) to which a user can access. Access is usually limited to the organizations specified in the locale. An exception is a locale without any organizations. It provides unrestricted access to system resources in all organizations.

A Cisco UCS domain can contain up to 48 user locales. Any user locales configured after the first 48 are accepted, but are inactive with faults raised.

NEW QUESTION 306

Which action must be performed before renumbering a Cisco UCS chassis?

- A. Move the chassis to new ports on fibric interconnect.
- B. Re-acknowledge the chassis.

- C. Decommission the chassis.
 D. Run the shut and no shut command on the connected ports.

Answer: C

NEW QUESTION 310

A network engineer is adding a Cisco HyperFlex data platform to the Cisco intersight management portal. Which two components are required for Intersight to claim the Cisco HyperFlex data platform? (Choose two.)

- A. device FQDN
 B. device public IP address
 C. device claim code
 D. device ID
 E. device serial number

Answer: CD

Explanation:

Text Description automatically generated

Step 1 In the Cisco Intersight, left navigation pane, select **ADMIN > Targets**.

Step 2 In the **Targets** details page, click **Claim a New Target**.

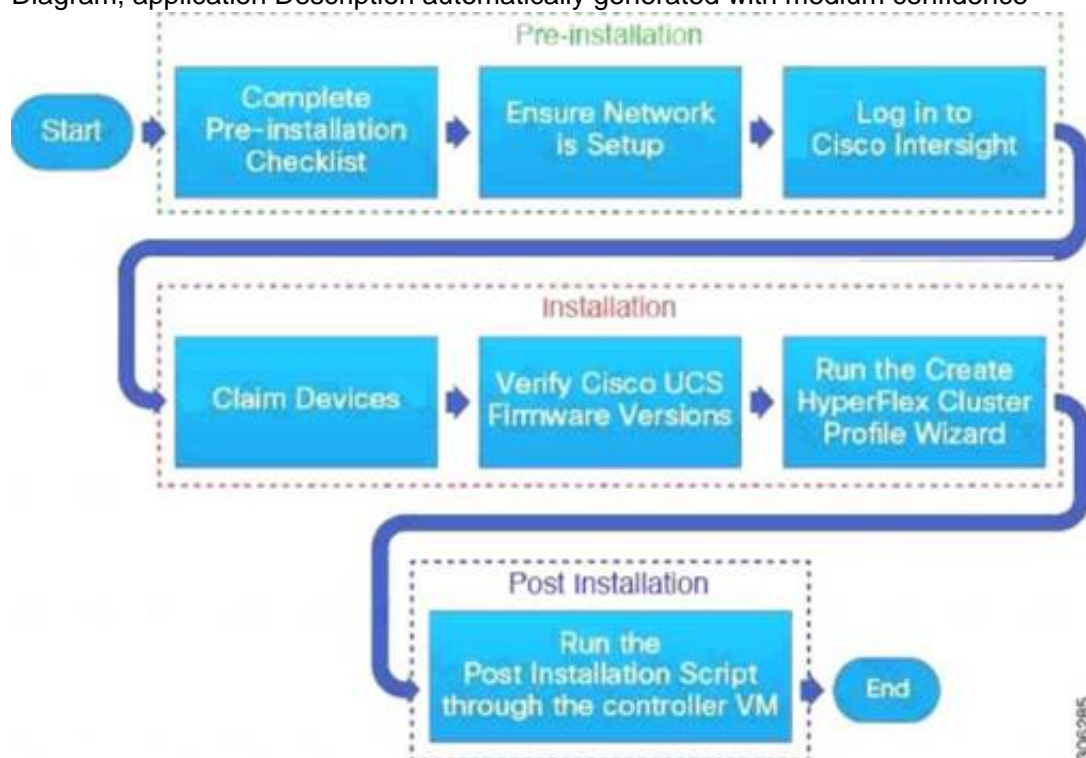
Step 3 In the **Claim a New Target** wizard, select **Hyperconverged > Cisco HyperFlex Cluster** and complete the following fields:

Note You can locate the **Device ID** and the **Claim Code** information in:

- Cisco UCS Manager and Cisco IMC by navigating to **Admin > Device Connector**.
- Cisco HyperFlex by navigating to **HyperFlex Connect UI > Settings > Device Connector**.
- Cisco UCS Director by navigating to **Administration > Device Connector**.

UI Element	Essential Information
Device ID	<p>Enter the applicable Device ID.</p> <ul style="list-style-type: none"> For a UCS Domain, use the serial number of the primary and subordinate FIs, in this format: (Serial number of FI-A & Serial number of FI-B). Example: [SAL1924GKV6&SAL1913CJ7V] For a standalone server, use serial number. Example: NGTR12345 For HyperFlex, use Cluster UUID. Example: xxxxxxxx-xxxx-xxxx-xxxx

Diagram, application Description automatically generated with medium confidence



https://www.cisco.com/c/en/us/td/docs/hyperconverged_systems/HyperFlex_HX_DataPlatformSoftware/HyperFlex_Installation_Guide_for_Intersight/b_HyperFlex_Installation_Guide_for_Intersight_chapter_011.html
<https://www.cisco.com/c/en/us/support/docs/hyperconverged-infrastructure/hyperflex-hx-dataplatform/214268-cisco-intersight-hyperflex-installatio.html>

NEW QUESTION 313

An engineer must apply AAA configuration on a Cisco MDS 9000 Series Switch. The solution must meet these conditions:

- > It must use a challenge-response authentication protocol that uses MD5 hashing with an incrementally changing identifier
- > The RADIUS configuration must be automatically shared with other MDS switches in the environment.

The RADIUS server is already defined. Which command set completes the configuration?

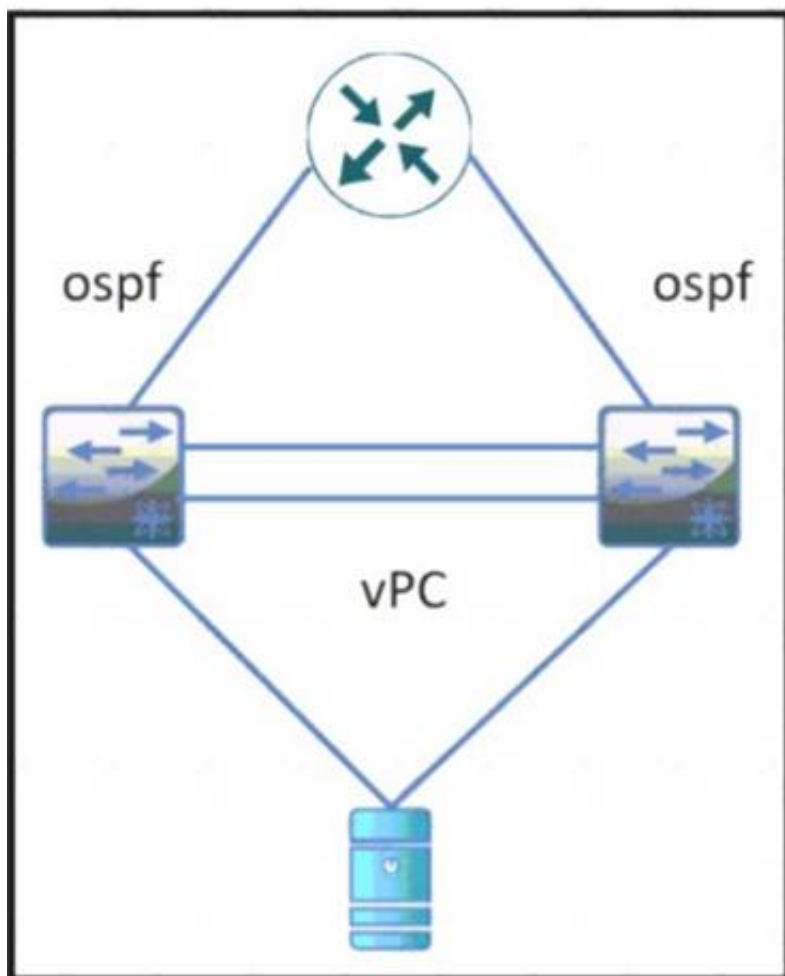
- ☐ aaa authentication login pap enable
 distribute radius
 radius-server host 10.8.8.0 auth-port 1821
- ☐ aaa authentication login mschapv2 enable
 radius propagate
 radius authentication port 1821
- ☐ aaa authentication login chap enable
 radius distribute
 radius commit
- ☐ aaa authentication login mschap enable
 radius commit
 radius-server host 10.8.8.0

- A. Option A
- B. Option B
- C. Option C
- D. Option D

Answer: C

NEW QUESTION 317

Refer to the exhibit



During a vPC peer switch reload, there is packet loss between the server and the router Which action must be taken to prevent this behavior during future reloads?

- A. Set the routed uplink ports of the Cisco Nexus peers as orphans.
- B. Increase the vPC delay restore timer.
- C. Decrease the OSPF hello and dead interval timers.
- D. Disable vPC ARP synchronize on the vPC peers.

Answer: B

NEW QUESTION 322

An engineer must integrate Cisco ACI with a VMware vSphere environment. The requirement is to use a VMware Distributed Virtual Switch and to assign the encapsulation VLAN of the EPG from the VLAN pool. Which configuration set accomplishes this goal?

- A. Create a VMM domain association under the EPGs Create a VLAN pool with static allocated VLANs.
- B. Create a physical domain association under the EPGs Create a VLAN pool with static allocated VLANs.
- C. Create a physical domain association under the EPG
- D. Create a VLAN pool with oVnarmc allocated VLANs
- E. Create a VMM domain association under the EPGs Create a VLAN pool with dynamic allocated VLANs.

Answer: D

NEW QUESTION 326

An engineer is configuring a vHBA template in UCS Manager. The engineer needs to specify the logical addresses used by the vHBA and the path through which the SAN traffic flows. Which two resources must be specified in the vHBA template? (Choose two.)

- A. MAC addresses

- B. WWPNPoool
- C. WWNN
- D. VLAN ID
- E. Fabric ID

Answer: BE

Explanation:

vNIC and vHBA Templates

vNIC and vHBA resources are always associated with specific FIs (A-side or B-side fabric interconnect). A typical Service Profile has at least two vNICs and two vHBAs; one bound to each side. vNIC (or vHBA) templates can be used to encapsulate both the MAC address pool (or **WWPN pool**) association as well as the **fabric ID**.

Best Practice: vNIC and vHBA Templates

Create reusable vNIC and vHBA templates in which termination is either reflected in the name (e.g., "fc0-A") or through well-accepted conventions (e.g., even interface to A side, and odd interface to B side).

vNIC templates should be thought of as application-specific network profiles that include important security definitions, such as VLAN mappings, as shown in Figure 6.

https://www.cisco.com/c/en/us/products/collateral/servers-unified-computing/ucs-manager/whitepaper_c11-697

NEW QUESTION 329

An engineer must remove the running configuration of a Cisco Nexus 9000 Series Switch and replace it with a backup file without restarting the switch. The backup file is stored on an SFTP server that is reachable via the An engineer must remove the running configuration mgmt0 interface Which set of commands accomplishes this task?

- ☐ copy sftp://admin@192.168.10.100/backup.cfg startup-config vrf mgmt0
copy startup-config running-config
- ☐ configure replace sftp://admin@192.168.10.100/backup.cfg vrf mgmt0
copy running-config bootflash://startup-config
- ☐ copy sftp://admin@192.168.10.100/backup.cfg bootflash:///backup.cfg vrf management
configure replace bootflash:///backup.cfg
- ☐ copy sftp://admin@192.168.10.100/backup.cfg startup-config vrf management
reload in 10

- A. Option A
- B. Option B
- C. Option C
- D. Option D

Answer: C

NEW QUESTION 332

Refer to the exhibit.

```
N9K-1# show running-config interface Ethernet1/1
switchport access vlan 10
spanning-tree port type edge
switchport port-security aging time 33
switchport port-security maximum 3
switchport port-security mac-address sticky
switchport port-security

N9K-1# show mac address-table interface ethernet 1/1
Legend:
* - primary entry, G - Gateway MAC, (R) - Routed MAC, O - Overlay MAC
age - seconds since last seen, + - primary entry using vPC Peer-Link,
(T) - True, (F) - False, C - ControlPlane MAC, ~ - vsan
VLAN    MAC Address      Type    age    Secure NTFY Ports
-----+-----+-----+-----+-----+-----+-----
* 10     0050.7966.6801   secure  -      T      F      Eth1/1
* 10     0050.7966.6802   secure  -      T      F      Eth1/1
* 10     0050.7966.6803   secure  -      T      F      Eth1/1
```

An engineer configures port security on a Cisco Nexus 9000 Series Switch. The requirement is to prevent any newly learned MAC addresses from forwarding traffic on the interface. Also, the already learned MAC addresses must not be affected by the changes. Which configuration meets these requirements?

- A. switchport port-security violation shutdown
- B. switchport port-security violation isolate
- C. switchport port-security violation protect
- D. switchport port-security violation restrict

Answer: C

NEW QUESTION 335

What is an advantage of using Ansible for automation as compared to puppet and chef?

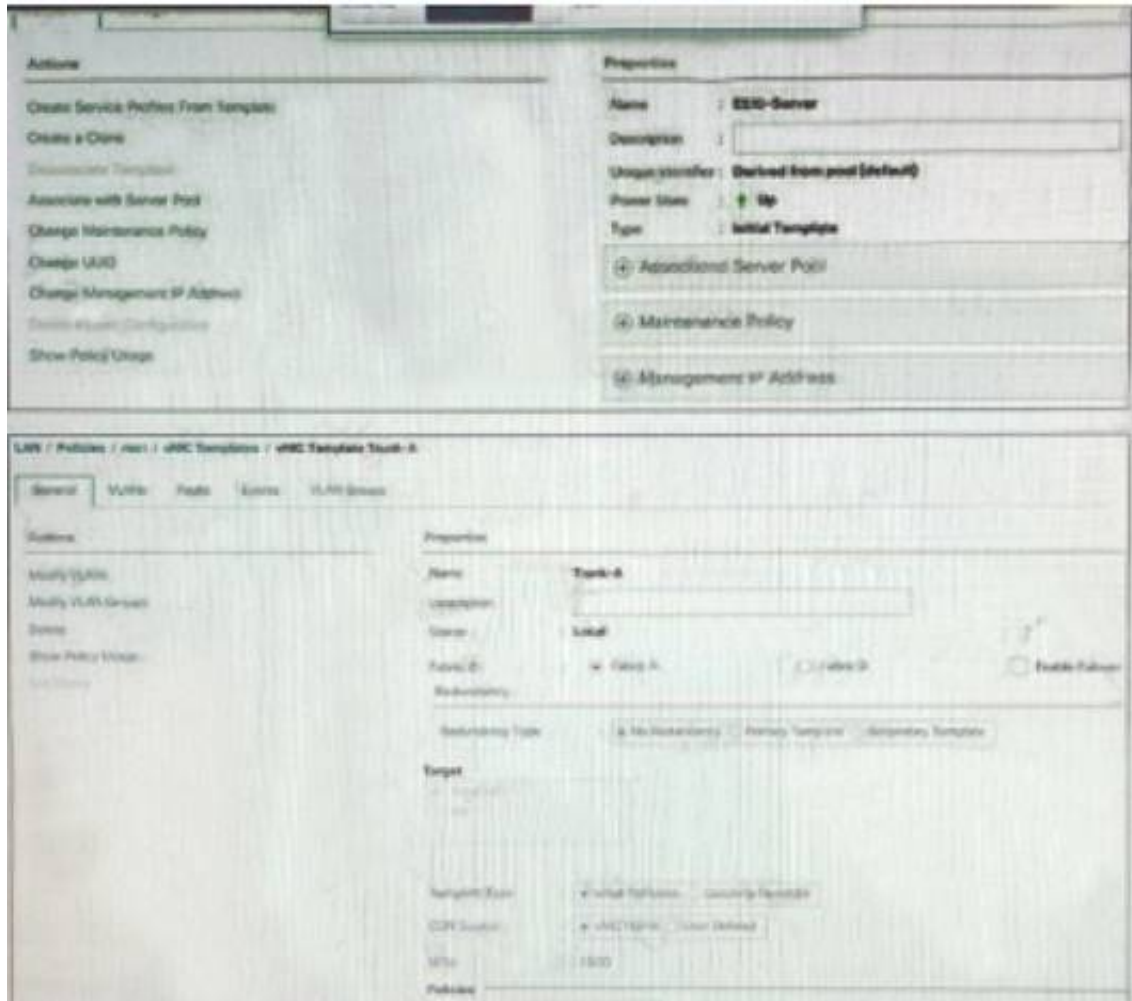
- A. Ansible automates the enforcement of configuration settings.

- B. Ansible perform automation without installing a software agent on the target node.
- C. Ansible configures a set of CLI commands on a device by using NETCONF.
- D. Ansible abstracts a scenario so that set of configuration setting can be used across multiple operating systems.

Answer: B

NEW QUESTION 338

Refer to the exhibit.



Esxi-server is associated to the blade server. A VLAN added to trunk-a. the VLAN is missing on the vNIC of ESXI-server. Which action should be taken to add the VLAN to the cNIC?

- A. Change the template type of ESXI-Server to an updating template.
- B. Change the template type of Trunk-A to an updating template.
- C. Remove both template and recreate them as updating templates.
- D. Remove the VLAN from the Trunk-A template and add the VLAN again.

Answer: D

NEW QUESTION 343

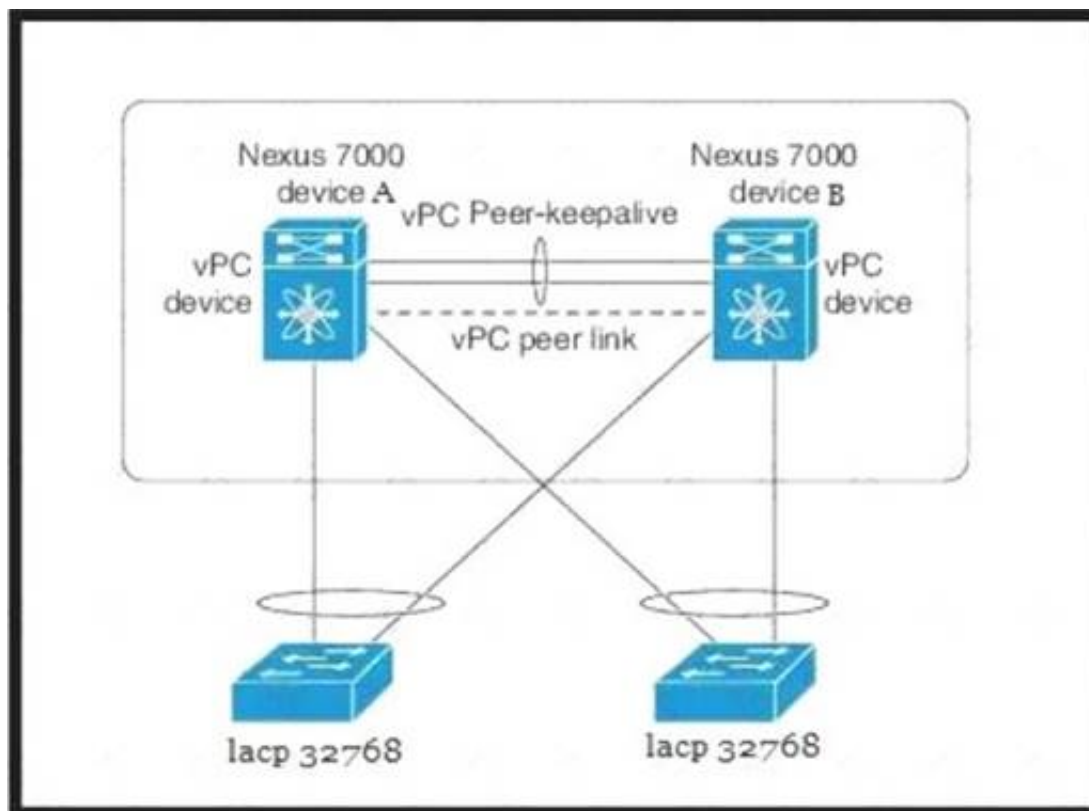
An engineer is deploying a VXLAN EVPN environment for a customer. The customers environment suffers from a large amount of flooding related to hosts attempting to resolve the MAC to IP mapping on the network segment. Which feature prevents this issue from happening in the future?

- A. anycast rendezvous point
- B. anycast gateway
- C. IP ARP SYNC
- D. IP ARP suppression

Answer: D

NEW QUESTION 348

Refer to the exhibit.



Which configuration ensure that the cisco Nexus 7000 series switches are the primary devices for LACP?

- A. N7K_A(config-vpc-domain)# role priority 1N7K_B(config-vpc-domain)# role priority 2
- B. N7K_A(config-vpc-domain)# system-priority 32768N7K_B(config-vpc-domain)# system-priority 32768
- C. N7K_A(config-vpc-domain)# system-priority 100N7K_B(config-vpc-domain)# system-priority 200
- D. N7K_A(config-vpc-domain)# system-priority 4000N7K_B(config-vpc-domain)# system-priority 4000

Answer: D

NEW QUESTION 349

An engineer configured an environment that contains the vPC and non-vPC switches. However, it was noticed that the downstream non-vPC switches do not receive the upstream vPC switch peers. Which vPC feature must be implement to ensure that vPC and non-vPC switches receive same STP bridge ID from the upstream vPC switch peers?

- A. vpc local role-priority 4000
- B. peer-switch
- C. system-mac 0123.4567.89ab
- D. peer-gateway

Answer: B

Explanation:

Peer-Switch feature allows the vPC peers use the same STP root ID as well as the same bridge ID.

NEW QUESTION 352

A network administrator must perform a system upgrade on a Cisco MDS 9000 Series Switch. Due to the recent changes by the security team:

- The AAA server is unreachable.
- All TCP communication between the MDS 9000 Series Switch and AAA servers is disabled. Which actions must be used to perform the upgrade?

- A. Log in locally to the MDS 9000 Series Switch using a network-admin role and download the upgrade files from the remote TFTP server.
- B. Log in locally to the MDS 9000 Series Switch using a server-admin role and download the upgrade files from the remote FTP server.
- C. Log in to a server storing the upgrade files remotely using a server-admin role and download the files to the MDS 9000 Series Switch using SFTP.
- D. Log in to a server storing the upgrade files remotely using a network-admin role and download the files to the MDS 9000 Series Switch using HTTP.

Answer: A

NEW QUESTION 354

Refer to the exhibit.

```
Switch1# show checkpoint summary
1) pim-checkpoint:
Created by admin
Created at Tue, 00:50:29 22 Jun 2021
Size is 24,855 bytes
User Checkpoint Summary
-----
Description: Created by Admin.

2) system-fm-pim:
Created by admin
Created at Tue, 00:08:57 22 Jun 2021
Size is 24,834 bytes
System Checkpoint Summary
-----
Description: Created by Feature Manager.
```

Which command must be used to restore configuration changes made by disabling the PIM feature and skipping any errors?

Refer to the exhibit. Which command must be used to restore configuration changes made by disabling the PIM feature and skipping any errors?

- A. rollback running-config checkpoint new-checkpoint stop-at-first-failure
- B. rollback running-config checkpoint new-checkpoint verbose
- C. rollback running-config checkpoint system-fm-pim-best-effort
- D. rollback running-config checkpoint system-fm-pim atomic

Answer: C

NEW QUESTION 356

An engineer must configure two Cisco Nexus 7000 series switches in the same data center to support OTV. Which command set completes the join interface configuration?

An engineer must configure two Cisco Nexus 7000 Series switches in the same data center to support OTV. Which command set completes the join interface configuration?

```
feature otv
otv site-identifier 256
interface overlay 1
otv control-group 239.1.1.1
otv data-group 239.1.1.0/29
otv join-interface ethernet 2/1
otv extend-vlan 5-10
no shutdown
```

☒ Edge Device 1
interface ethernet 2/1
ip address 192.0.2.1/24
ip igmp version 3

Edge Device 2
interface ethernet 2/1
ip address 192.0.2.16/24
ip igmp version 3

☐ Edge Device 1
interface ethernet 2/1
ip address 192.0.2.1/24
ip igmp version 3
ip pim sparse-mode

Edge Device 2
interface ethernet 2/1
ip address 192.0.2.16/24
ip igmp version 3
ip pim sparse-mode

☐ Edge Device 1
interface ethernet 2/1
ip address 192.0.2.1/24

Edge Device 2
interface ethernet 2/1
ip address 192.0.2.16/24

☐ Edge Device 1
interface ethernet 2/1
ip address 192.0.2.1/24
ip igmp version 3

Edge Device 2
interface ethernet 2/1
ip address 192.0.2.1/24
ip igmp version 3

- A. Option A
- B. Option B
- C. Option C
- D. Option D

Answer: A

NEW QUESTION 361

Port security is enabled on a Cisco MDS 9000 series Switch. Which statement is true?

- A. Cisco Fabric Services must be disabled before enabling port security.
- B. Port security can be enabled only globally and affects all VSANs.
- C. Auto-learning is always enabled automatically when port security is enabled.
- D. Any devices currently logged in must be added manually to the device databased.

Answer: C

Explanation:

https://www.cisco.com/c/en/us/td/docs/switches/datacenter/mds9000/sw/8_x/config/security/cisco_mds9000_security_config_guide_8x/configuring_port_security.html

- **Active database:** The database currently enforced by the switch. The port security feature requires all devices connecting to a switch to be part of the port security active database. The software uses this active database to enforce authorization.

About Auto-Learning

You can instruct the switch to automatically learn (auto-learn) the port security configurations over a specified period. This feature allows any switch in the Cisco MDS 9000 Family to automatically learn about devices and switches that connect to it. Use this feature when you activate the port security feature for the first time as it saves tedious manual configuration for each port. You must configure auto-learning on a per-VSAN basis. If enabled, devices and switches that are allowed to connect to the switch are automatically learned, even if you have not configured any port access.

When auto-learning is enabled, learning happens for the devices or interfaces that were already logged into the switch and the new devices or interfaces that need to be logged in. Learned entries on a port are cleaned up after you shut down that port if auto-learning is still enabled.

Learning does not override the existing configured port security policies. So, for example, if an interface is configured to allow a specific pWWN, then auto-learning will not add a new entry to allow any other pWWN on that interface. All other pWWNs will be blocked even in auto-learning mode.

No entries are learned for a port in the shutdown state.

When you activate the port security feature, auto-learning is also automatically enabled.



Note

If you activate port security feature, auto-learning gets enabled by default. You cannot re-activate port security until auto-learning is disabled or deactivate and activate again.

Port Security Activation

By default, the port security feature is not activated in any switch in the Cisco MDS 9000 Family.

By activating the port security feature, the following apply:

- Auto-learning is also automatically enabled, which means:
 - From this point, auto-learning happens for the devices or interfaces that were already logged into the switch and also for the new devices will login in future.
 - You cannot activate the database until you disable auto-learning.
- All the devices that are already logged in are learned and are added to the active database.
- All entries in the configured database are copied to the active database.

After the database is activated, subsequent device login is subject to the activated port bound WWN pairs, excluding the auto-learned entries. You must disable auto-learning before the auto-learned entries become activated.

When you activate the port security feature, auto-learning is also automatically enabled. You can choose to activate the port security feature and disable auto-learning.

NEW QUESTION 366

An engineer must design an automation solution for the Cisco ACI Fabric to speed up the deployment of logical network elements for tenant provisioning. When creating a solution, the engineer must keep in mind that the tool must support these requirements:

- Allow the rapid creation and removal of logical containers.
- Support the creation of custom modules and data structures.
- Be extensible with external libraries and modules.
- Allow rapid testing of code using an on-demand execution environment.

Which automation tool meets these requirements?

- A. YAML
- B. Chef
- C. SaltStack
- D. Python

Answer: B

NEW QUESTION 368

An infrastructure architect is analyzing the deployment type for an application. Several companies must be able to operate the application environment and integrate it with a third-party protocol. The development team also must have maximum control over their development environment, including the operating system used, Python interpreter, and corresponding libraries. Which cloud deployment solution meets these requirements?

- A. public cloud Storage as a Service

- B. private cloud Platform as a Service
- C. hybrid cloud Software as a Service
- D. community cloud Infrastructure as a Service

Answer: D

NEW QUESTION 372

A network engineer must implement RBAC on Cisco MDS 9000 Series Multilayer Switches.
Drag and drop the Cisco MDS 9000 Series roles from the left onto the correct categories on the right.

san-operator

global-admin

server-admin

storage-admin

network-admin

network-operator

System Defined

User Defined

- A. Mastered
- B. Not Mastered

Answer: A

Explanation:

Graphical user interface Description automatically generated with low confidence
[https://www.cisco.com/c/en/us/td/docs/unified_computing/ucs/ucs-manager/GUI-User-Guides/Admin Management/3-1/b_Cisco_UCS_Admin_Mgmt_Guide_3_1/b_UCSM_Admin_Mgmt_Guide_chapter_01.html](https://www.cisco.com/c/en/us/td/docs/unified_computing/ucs/ucs-manager/GUI-User-Guides/Admin%20Management/3-1/b_Cisco_UCS_Admin_Mgmt_Guide_3_1/b_UCSM_Admin_Mgmt_Guide_chapter_01.html)
https://www.cisco.com/c/en/us/td/docs/switches/datacenter/mds9000/sw/8_x/config/security/cisco_mds9000_security_config_guide_8x/configuring_users_and_common_roles.html#con_1422305

NEW QUESTION 374

An engineer must configure a VDS port group using APIC policy. The requirements are for the frames to be mapped to a particular Layer 2 network and for the virtual machine assigned to the port group to receive all frames passed on the virtual switch. Which two settings must be used to meet these requirements? (Choose two.)

- A. forged transmits
- B. VMDirectPath
- C. port binding
- D. promiscuous mode
- E. VLAN

Answer: CD

NEW QUESTION 378

.....

Thank You for Trying Our Product

We offer two products:

1st - We have Practice Tests Software with Actual Exam Questions

2nd - Questions and Answers in PDF Format

350-601 Practice Exam Features:

- * 350-601 Questions and Answers Updated Frequently
- * 350-601 Practice Questions Verified by Expert Senior Certified Staff
- * 350-601 Most Realistic Questions that Guarantee you a Pass on Your First Try
- * 350-601 Practice Test Questions in Multiple Choice Formats and Updates for 1 Year

100% Actual & Verified — Instant Download, Please Click
[Order The 350-601 Practice Test Here](#)