

Microsoft

Exam Questions MD-100

Windows 10



NEW QUESTION 1

- (Exam Topic 4)

Your network contains an Active Directory domain. The domain contains a computer named Computer1 that runs Windows 10. Computer1 has a Trusted Platform Module (TPM) version 12.

The domain contains a domain controller named DC1 that has all the Remote Server Administration Tools (RSAT) installed.

BitLocker Drive Encryption (BitLocker) recovery passwords are stored in Active Directory. You enable BitLocker on the operating system drive of Computer1.

A software update on Computer1 disables the TPM, and BitLocker enters recovery mode. You need to recover your BitLocker password for Computer1.

What should you use to retrieve the recovery password?

- A. Active Directory Users and Computers
- B. repair-bde with the -f parameter
- C. manage-bde with the -unlock parameter
- D. Disk Management

Answer: A

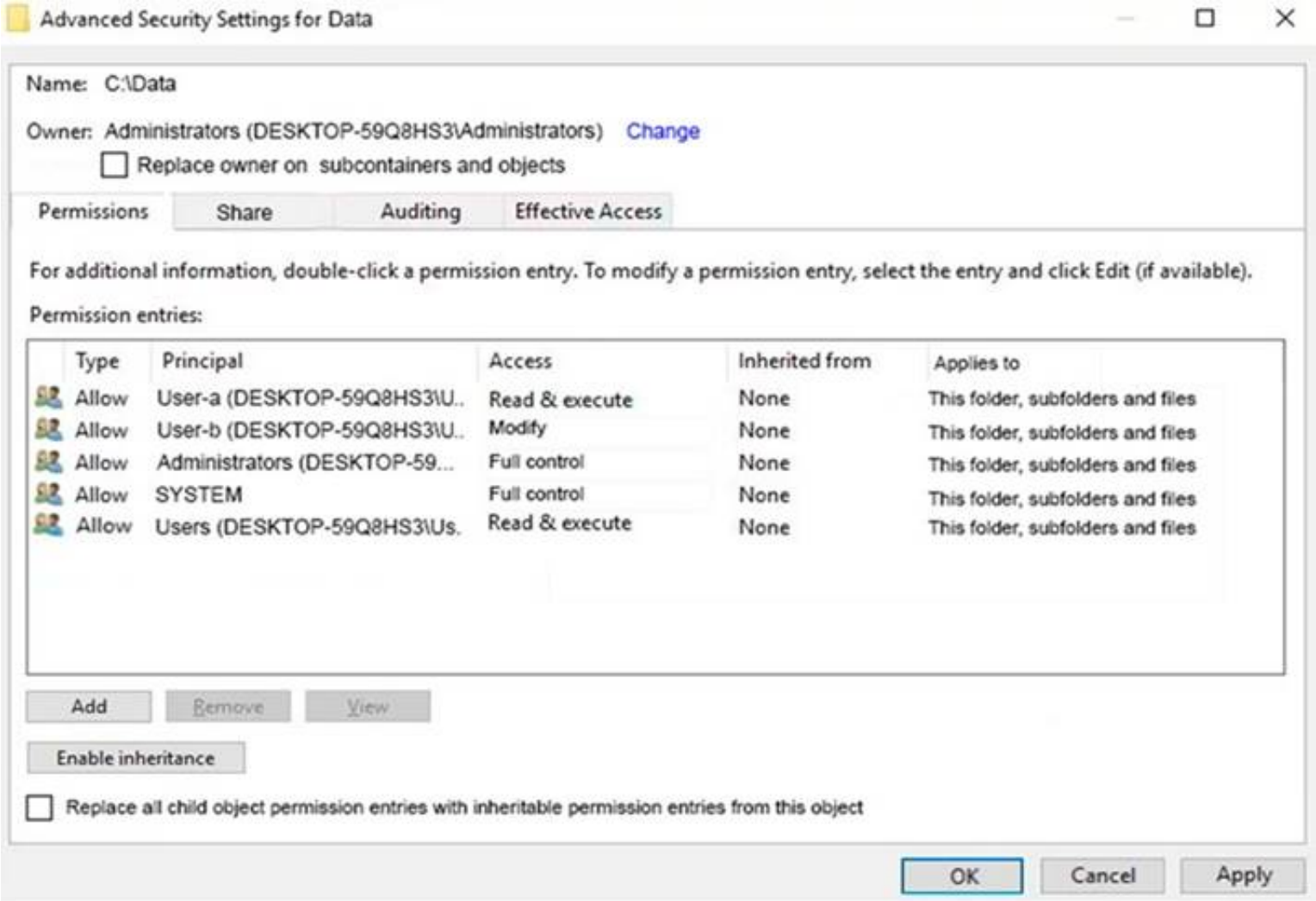
NEW QUESTION 2

- (Exam Topic 4)

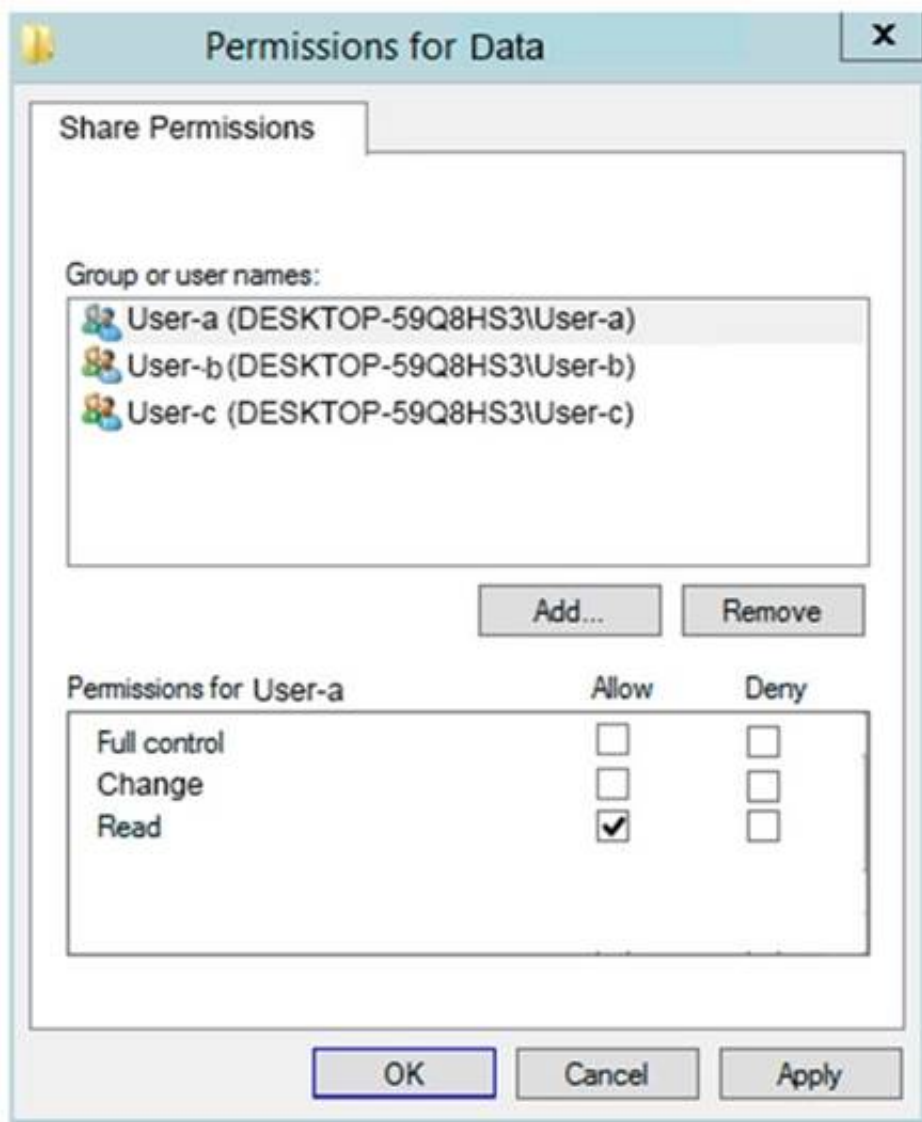
You have a computer named Computer5 that runs Windows 10 that is used to share documents in a workgroup.

You create three users named User-a, User-b, User-c. The users plan to access Computer5 from the network only.

You have a folder named Data. The Advanced Security Settings for the Data folder are shown in the Security exhibit. (Click the Security Exhibit tab.)



You share the Data folder. The permission for User-a are shown in the User-a exhibit (Click the User-a tab.)

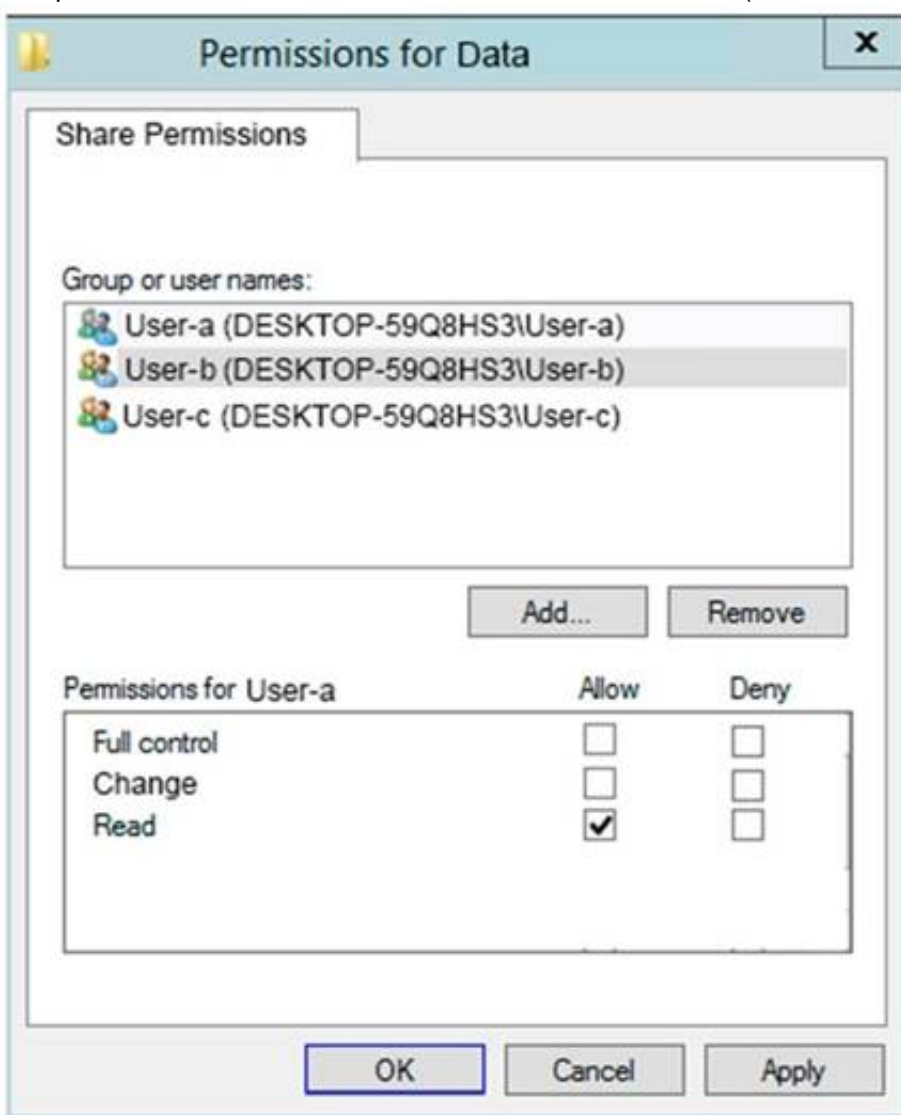


The dialog box is titled "Permissions for Data". It has a tab labeled "Share Permissions". Below the tab is a list box labeled "Group or user names:" containing three entries: "User-a (DESKTOP-59Q8HS3\User-a)", "User-b (DESKTOP-59Q8HS3\User-b)", and "User-c (DESKTOP-59Q8HS3\User-c)". Below the list box are "Add..." and "Remove" buttons. Below these is a table titled "Permissions for User-a".

	Allow	Deny
Full control	<input type="checkbox"/>	<input type="checkbox"/>
Change	<input type="checkbox"/>	<input type="checkbox"/>
Read	<input checked="" type="checkbox"/>	<input type="checkbox"/>

At the bottom of the dialog are "OK", "Cancel", and "Apply" buttons.

The permissions for user-b are shown in the User-b exhibit. (Click the User-b tab.)

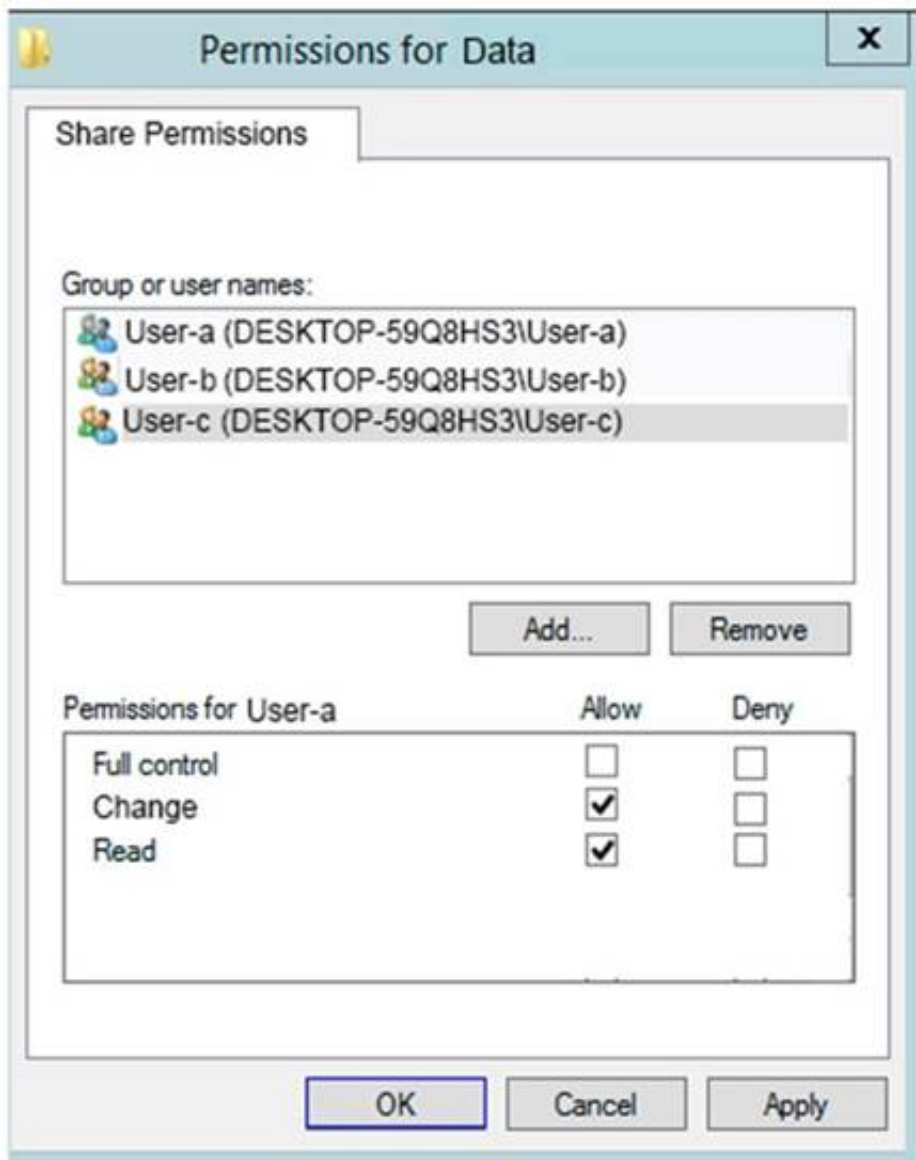


The dialog box is titled "Permissions for Data". It has a tab labeled "Share Permissions". Below the tab is a list box labeled "Group or user names:" containing three entries: "User-a (DESKTOP-59Q8HS3\User-a)", "User-b (DESKTOP-59Q8HS3\User-b)", and "User-c (DESKTOP-59Q8HS3\User-c)". Below the list box are "Add..." and "Remove" buttons. Below these is a table titled "Permissions for User-a".

	Allow	Deny
Full control	<input type="checkbox"/>	<input type="checkbox"/>
Change	<input type="checkbox"/>	<input type="checkbox"/>
Read	<input checked="" type="checkbox"/>	<input type="checkbox"/>

At the bottom of the dialog are "OK", "Cancel", and "Apply" buttons.

The permissions for user-c are shown in the User-c exhibit. (Click the User-c tab.)



For each of the following statements, select Yes if the statements is true. Otherwise, select No.
NOTE: Reach correct selection is worth one point.

Statements	Yes	No
User-a can modify files in the Data share.	<input type="radio"/>	<input type="radio"/>
User-b can delete files in the Data share.	<input type="radio"/>	<input type="radio"/>
User-c can read files in the Data share.	<input type="radio"/>	<input type="radio"/>

- A. Mastered
- B. Not Mastered

Answer: A

Explanation:
No No Yes

NEW QUESTION 3

- (Exam Topic 4)

Please wait while the virtual machine loads. Once loaded, you may proceed to the lab section. This may take a few minutes, and the wait time will not be deducted from your overall test time.

When the Next button is available, click it to access the lab section. In this section, you will perform a set of tasks in a live environment. While most functionality will be available to you as it would be in a live environment, some functionality (e.g., copy and paste, ability to navigate to external websites) will not be possible by design.

Scoring is based on the outcome of performing the tasks stated in the lab. In other words, it doesn't matter how you accomplish the task, if you successfully perform it, you will earn credit for that task.

Labs are not timed separately, and this exam may more than one lab that you must complete. You can use as much time as you would like to complete each lab. But, you should manage your time appropriately to ensure that you are able to complete the lab(s) and all other sections of the exam in the time provided.

Please note that once you submit your work by clicking the Next button within a lab, you will NOT be able to return to the lab.

Username and password



Use the following login credentials as needed:

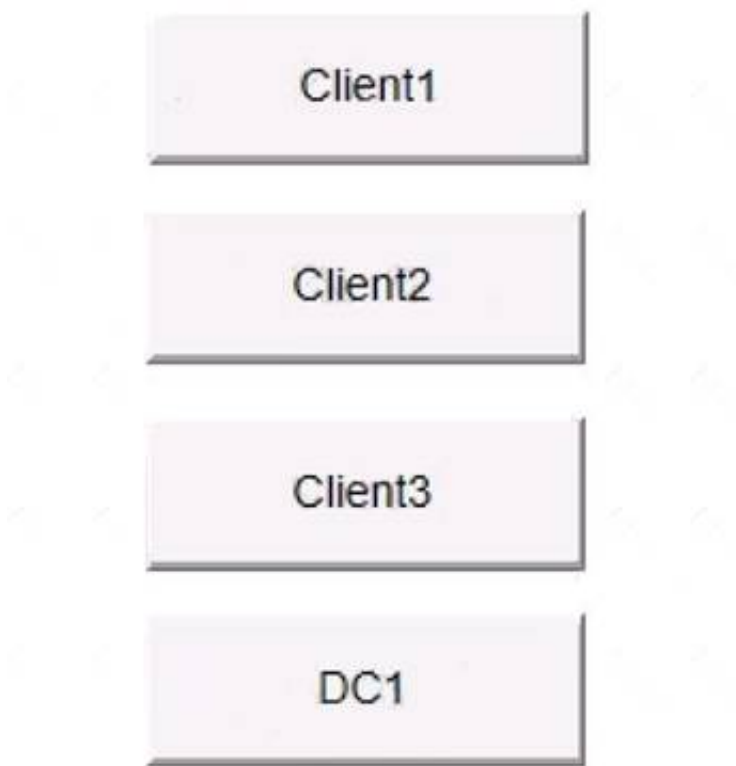
To enter your password, place your cursor in the Enter password box and click on the password below.

Username: Contoso/Administrator

Password: Passw0rd!

The following information is for technical support purposes only:

Lab Instance: 10921597



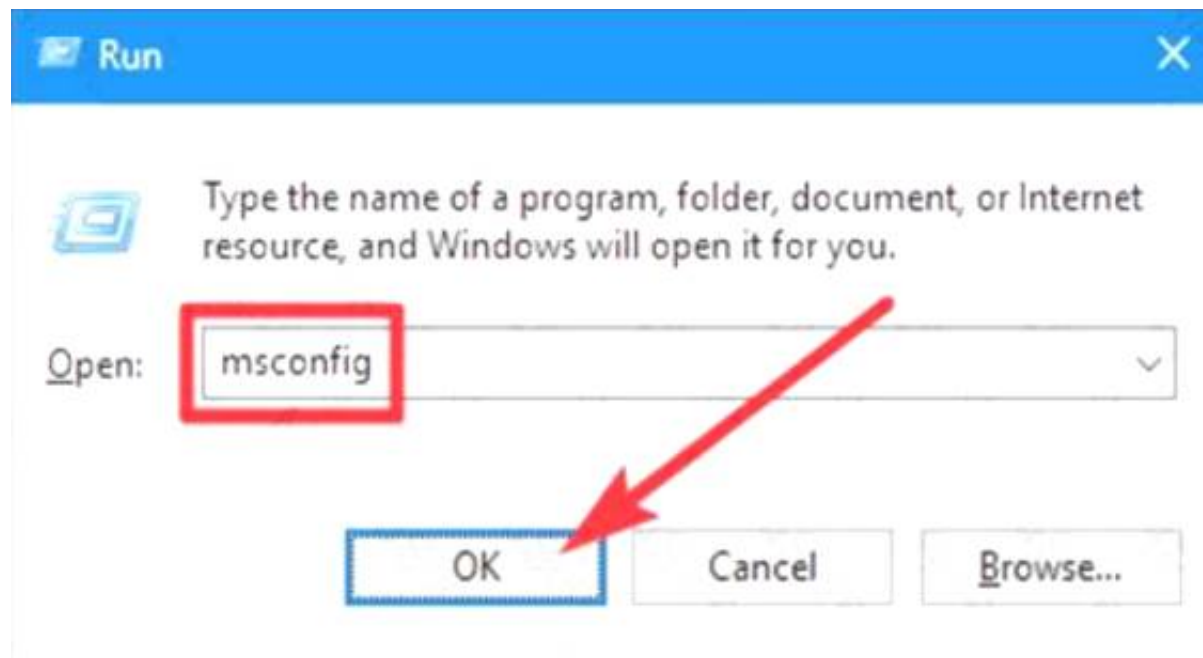
You need to ensure that Client3 starts in safe mode automatically the next time the computer restarts. After completing the task, you must NOT restart Client3. To complete this task, sign in to the required computer or computers.

- A. Mastered
- B. Not Mastered

Answer: A

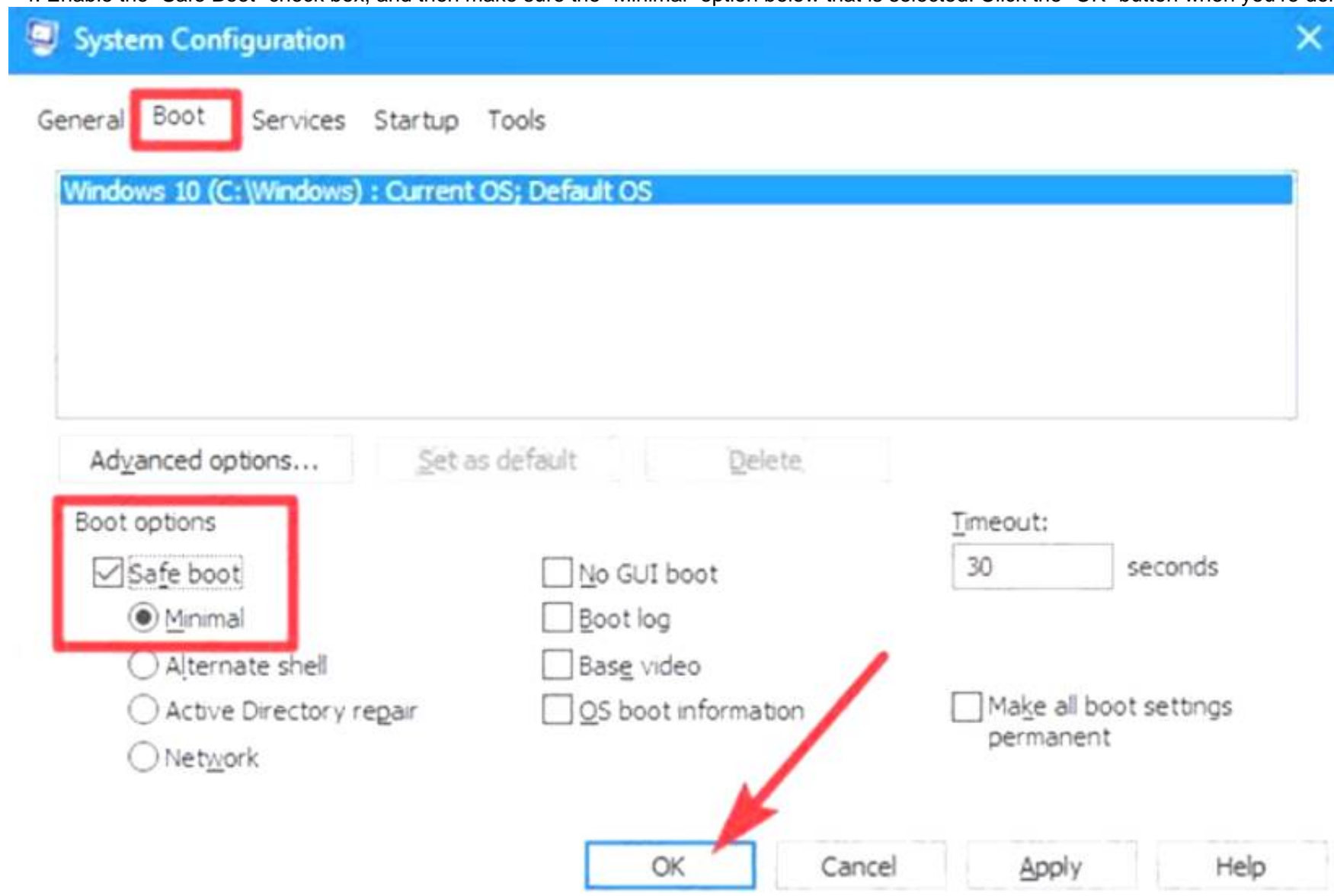
Explanation:

- * 1. From Client3, open the System Configuration utility by pressing the Windows & R keys simultaneously to display the Run box .
- * 2. Type "msconfig" into the box, and then click OK.

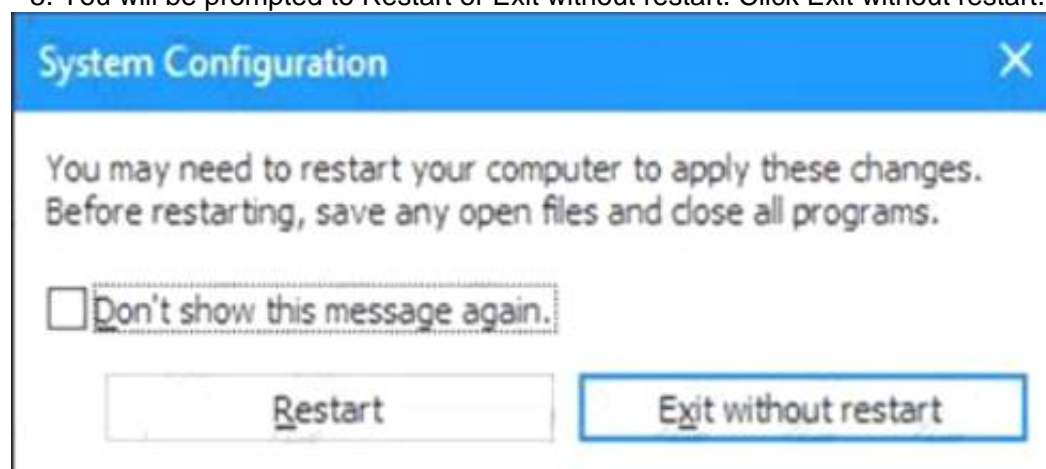


* 3. In the “System Configuration” window, switch to the “Boot” tab.

* 4. Enable the “Safe Boot” check box, and then make sure the “Minimal” option below that is selected. Click the “OK” button when you’re done.



* 5. You will be prompted to Restart or Exit without restart. Click Exit without restart.



Reference:

<https://www.howtogeek.com/howto/windows-vista/force-windows-to-boot-into-safe-mode-without-using-the-f8>

NEW QUESTION 4

- (Exam Topic 4)

Your network contains an Active Directory domain. The domain contains 500 computers that run Windows 10. The computers are used as shown in the following table.

Usage	Update note
Manufacturing	Critical computers that must have minimal downtime: Updates must be deferred as long as possible.
Information technology (IT)	Computers for IT staff: Updates must be installed as soon as they are released.
Administration	Computers for general use: Updates must be installed two months after they are released.

You need to apply updates based on the computer usage. What should you configure?

- A. Notifications & actions from System in the Settings apps.
- B. the Windows Update for Business settings by using a Group Policy Object (GPO)
- C. the Windows Installer settings by using a Group Policy Object (GPO)
- D. Delivery Optimization from Update & Security in the Settings apps

Answer: B

Explanation:

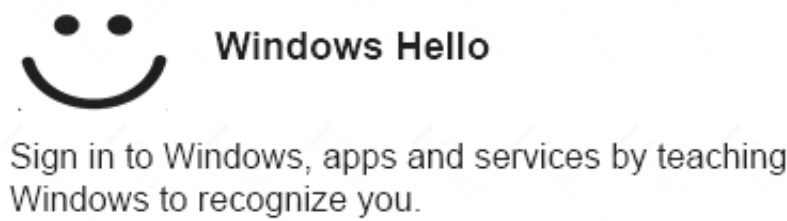
Reference:
<https://docs.microsoft.com/en-us/windows/deployment/update/waas-wufb-group-policy>

NEW QUESTION 5

- (Exam Topic 4)
 You have a Microsoft Azure Active Directory (Azure AD) tenant.
 Some users sign in to their computer by using Windows Hello for Business.
 A user named User1 purchases a new computer and joins the computer to Azure AD.
 User1 attempts to configure the sign-in options and receives the error message shown in the exhibit.

Sign-in options

*Some settings are hidden or managed by your organization.



Windows Hello isn't available on this device.

See how it works and find compatible devices.

You open Device Manager and confirm that all the hardware works correctly.
 You need to ensure that User1 can use Windows Hello for Business facial recognition to sign in to the computer.
 What should you do first?

- A. Purchase an infrared (IR) camera.
- B. Upgrade the computer to Windows 10 Enterprise.
- C. Enable UEFI Secure Boot.
- D. Install a virtual TPM driver.

Answer: B

Explanation:

References:
<https://docs.microsoft.com/en-us/windows/security/identity-protection/hello-for-business/hello-planning-guide>

NEW QUESTION 6

- (Exam Topic 4)
 You are a network administrator at your company.
 A user attempts to start a computer and receives the following error message: "Bootmgr is missing." You need to resolve the issue.
 You start the computer in the recovery mode.
 Which command should you run next? To answer, select the appropriate options in the answer area. NOTE: Each correct selection is worth one point.

Bootrec

Diskpart

Sfc

/FixMbr

/RebuildBcd

/ScanNow

/offbootdir

- A. Mastered
- B. Not Mastered

Answer: A

Explanation:

References: <https://neosmart.net/wiki/bootmgr-is-missing/>

NEW QUESTION 7

- (Exam Topic 4)

Please wait while the virtual machine loads. Once loaded, you may proceed to the lab section. This may take a few minutes, and the wait time will not be deducted from your overall test time.

When the Next button is available, click it to access the lab section. In this section, you will perform a set of tasks in a live environment. While most functionality will be available to you as it would be in a live environment, some functionality (e.g., copy and paste, ability to navigate to external websites) will not be possible by design.

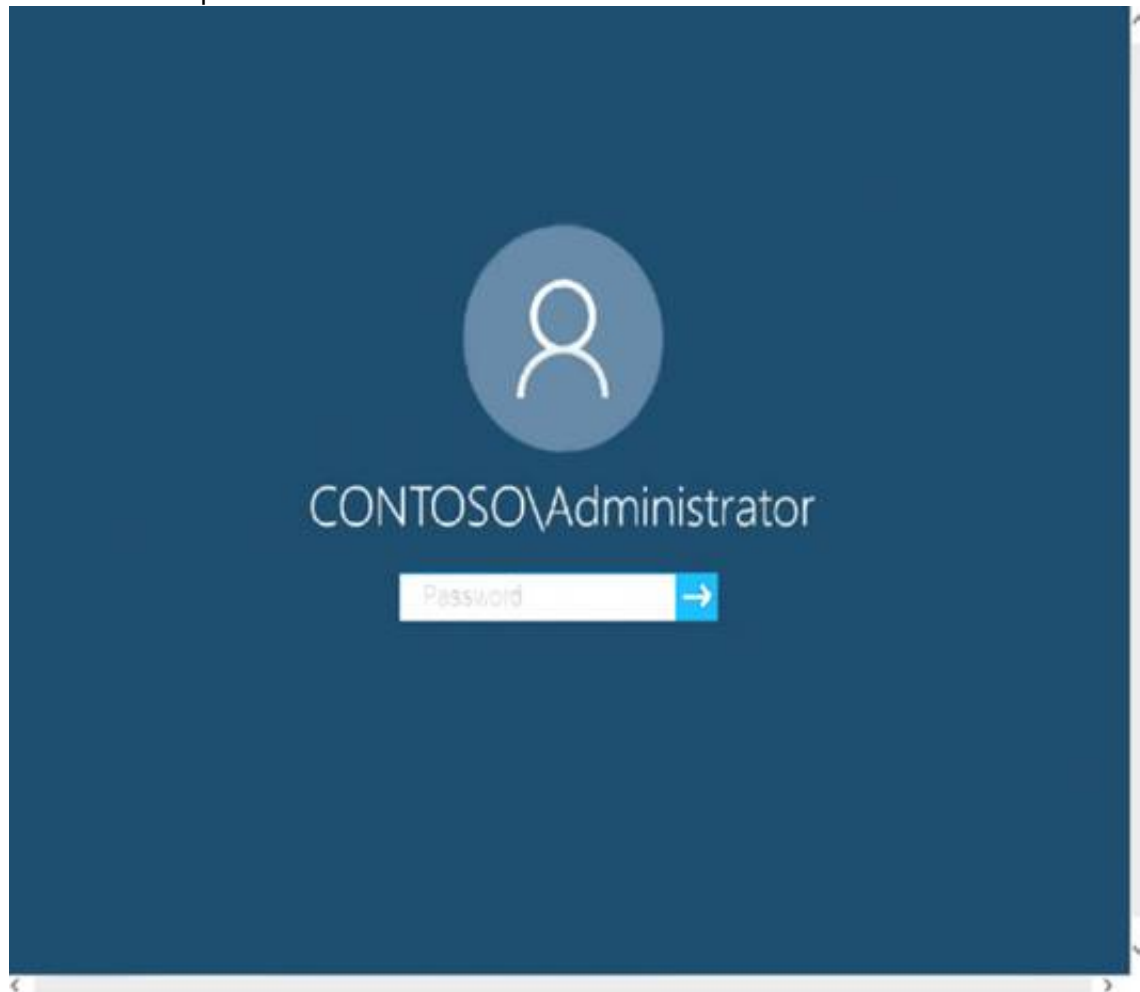
Scoring is based on the outcome of performing the tasks stated in the lab. In other words, it doesn't matter how you accomplish the task, if you successfully perform it, you will earn credit for that task.

Labs are not timed separately, and this exam may more than one lab that you must complete. You can use as much time as you would like to complete each lab.

But, you should manage your time appropriately to ensure that you are able to complete the lab(s) and all other sections of the exam in the time provided.

Please note that once you submit your work by clicking the Next button within a lab, you will NOT be able to return to the lab.

Username and password



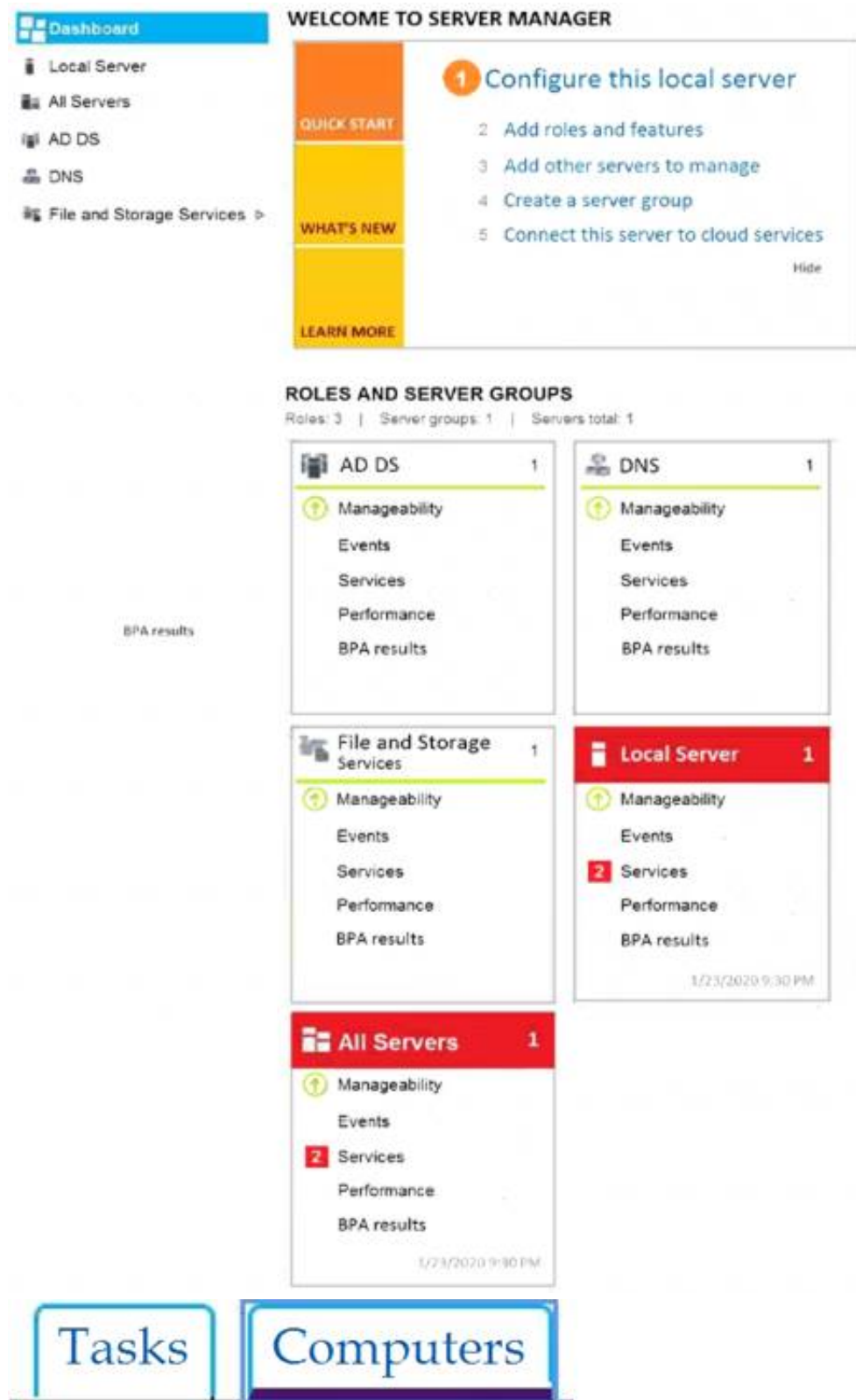
Use the following login credentials as needed:

To enter your password, place your cursor in the Enter password box and click on the password below.

Username: Contoso/Administrator

Password: Passw0rd!

The following information is for technical support purposes only: Lab Instance: 11145882



Users in the Finance group report that they cannot copy files to Client1\Finance. You need to resolve the issue. To complete this task, sign in to the required computer or computers.

- A. Mastered
- B. Not Mastered

Answer: A

Explanation:

- Open File Explorer.
- Browse and find the file or folder you want to have full access.
- Right-click it, and select Properties.
- Click the Security tab to access the NTFS permissions.
- Click the Advanced button.

- On the "Advanced Security Settings" page, you need to click the Change link, in the Owner's field.
- Click the Advanced button.
- On the "Select User or Group" page, click the Find Now button.
- From the search result, select your user account, and click OK.
- On the "Select User or Group" page, click OK.
- Click Apply.
- Click OK.
- Click OK again.
- Click OK one more time to complete this task.

It's important to note that if you're taking ownership of a folder, you can check the Replace ownership on subcontainers and object option in the Advanced Security Settings page to take control of the subfolders inside of the folder.

Now you'll need to grant full access control to your account, to do this use the following steps:

- Right-click the file or folder and select Properties.
- Click the Security tab to access the NTFS permissions.
- Click the Advanced button.
- Under the Permissions tab, click Add.
- Click Select a principal to add your user account.
- On the "Select User or Group" page, click the Find Now button.
- From the search result, select your user account, and click OK.
- On the "Select User or Group" page, click OK.
- On "Permission Entry", check the Full control option.
- Click OK.
- Click OK.
- Click Apply.
- Click OK.
- Click OK to close the file or folder properties to complete the task.

You can now assign the necessary permissions to the Finance group.

If you right-click on a file or folder, choose Properties and click on the Security tab, we can now try to edit some permissions. Go ahead and click the Edit button to get started.

At this point, there are a couple of things you can do. Firstly, you'll notice that the Allow column is probably greyed out and can't be edited. This is because of the inheritance I was talking about earlier. However, you can check items on the Deny column.

When you click the Add button, you have to type in the user name or group name into the box and then click on Check Names to make sure it's correct. If you don't remember the user or group name, click on the Advanced button and then just click Find Now. It will show you all the users and groups.

Click OK and the user or group will be added to the access control list. Now you can check the Allow column or Deny column.

Reference:

<https://www.windowscentral.com/how-take-ownership-files-and-folders-windows-10> <https://www.online-tech-tips.com/computer-tips/set-file-folder-permissions-windows/>

NEW QUESTION 8

- (Exam Topic 4)

You have a workgroup computer named Computer1 that runs Windows 10.

You need to configure Windows Hello for sign-in to Computer1 by using a physical security key. What should you use?

- A. a USB 3.0 device that supports BitLocker Drive Encryption (BitLocker)
- B. a USB device that supports FIDO2
- C. a USB 3.0 device that has a certificate from a trusted certification authority (CA)
- D. a USB device that supports RSA SecurID

Answer: B

Explanation:

Reference:

<https://docs.microsoft.com/en-us/azure/active-directory/user-help/security-info-setup-security-key>

NEW QUESTION 9

- (Exam Topic 4)

You have a computer that runs Windows 10.

You need to be able to recover the computer by using System Image Recovery.

What should you use to create a system image?

- A. Windows System Image Manager (Windows SIM)
- B. Backup and Restore (Windows 7)
- C. File History
- D. System Protection

Answer: B

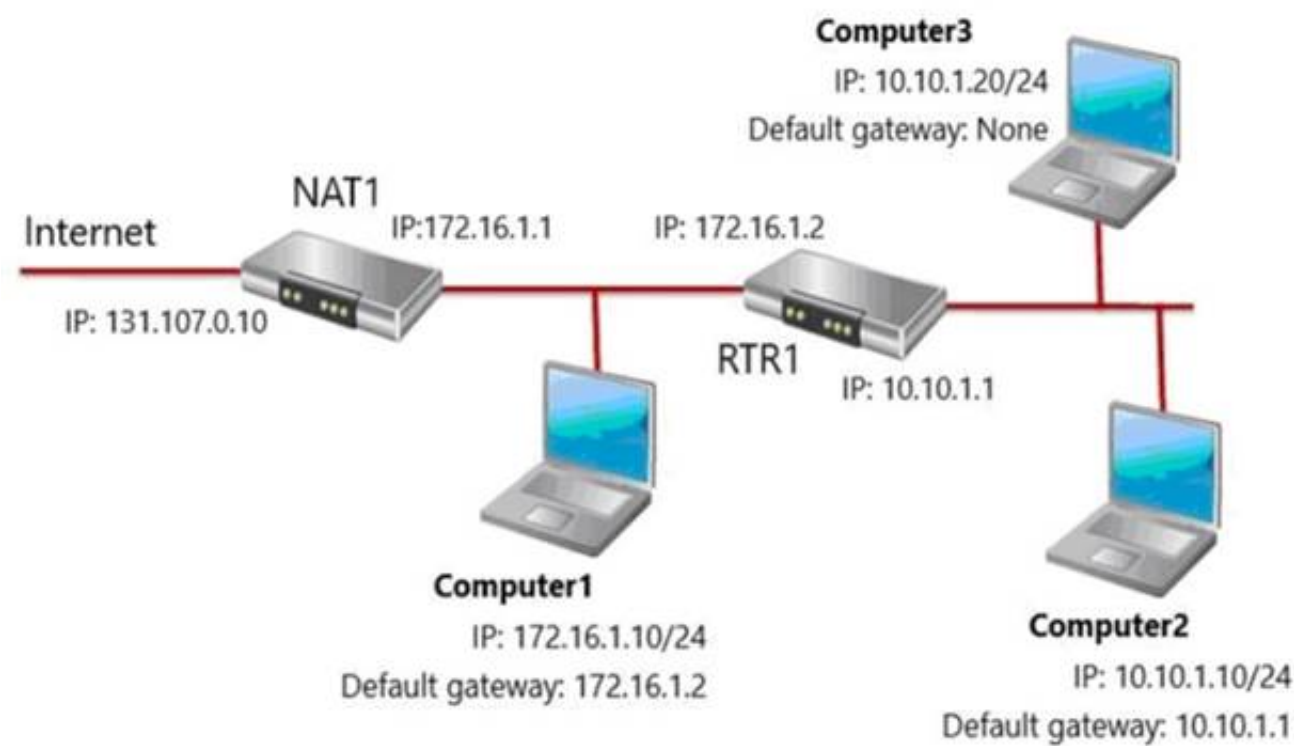
Explanation:

Reference:

https://answers.microsoft.com/en-us/windows/forum/windows_10/how-to-create-a-system-image-in-windows-1

NEW QUESTION 10

- (Exam Topic 4)
You have the network shown in the following exhibit.



Computer1, Computer2, and Computer3 run Windows 10. Windows Defender Firewall is configured to allow ICMP traffic. RTR1 is a router. For each of the following statements, select Yes if the statement is true. Otherwise, select No. NOTE: Each correct selection is worth one point.

Answer Area

Statements	Yes	No
If Computer1 pings the IP address of Computer2, Computer1 will receive a reply.	<input type="radio"/>	<input type="radio"/>
If Computer1 pings the IP address of Computer3, Computer1 will receive a reply.	<input type="radio"/>	<input type="radio"/>
If Computer2 pings the IP address of Computer3, Computer2 will receive a reply.	<input type="radio"/>	<input type="radio"/>

- A. Mastered
- B. Not Mastered

Answer: A

Explanation:
Answer Area

Statements	Yes	No
If Computer1 pings the IP address of Computer2, Computer1 will receive a reply.	<input checked="" type="radio"/>	<input type="radio"/>
If Computer1 pings the IP address of Computer3, Computer1 will receive a reply.	<input checked="" type="radio"/>	<input type="radio"/>
If Computer2 pings the IP address of Computer3, Computer2 will receive a reply.	<input type="radio"/>	<input checked="" type="radio"/>

NEW QUESTION 10

- (Exam Topic 4)
You have computers that run Windows 11 as shown in the following table.

Name	IP address	Joined to
Computer1	192.168.10.10	Active Directory
Computer2	192.168.10.15	Workgroup

You ping 192.168.10.15 from Computer1 and discover that the request timed out. You need to ensure that you can successfully ping 192.168.10.15 from Computer1.

Solution: On Computer2, you allow incoming ICMPv6 traffic in Windows Defender Firewall. Does this meet the goal?

- A. Yes
- B. No

Answer: A

NEW QUESTION 12

- (Exam Topic 4)

You have 100 computers that run Windows 10. You have no servers. All the computers are joined to Microsoft Azure Active Directory (Azure AD).

The computers have different update settings, and some computers are configured for manual updates. You need to configure Windows Update. The solution must meet the following requirements:

- The configuration must be managed from a central location.
- Internet traffic must be minimized.
- Costs must be minimized.

How should you configure Windows Update? To answer, select the appropriate options in the answer area. NOTE: Each correct selection is worth one point.

Windows Update technology to use:

▼

Windows Server Update Services (WSUS)
 Microsoft System Center Configuration Manager
 Windows Update for Business

Manage the configuration by using:

▼

A Group Policy object (GPO)
 Microsoft System Center Configuration Manager
 Microsoft Intune

Manage the traffic by using:

▼

Delivery Optimization
 BranchCache
 Peer cache

- A. Mastered
- B. Not Mastered

Answer: A

Explanation:

References:

<https://docs.microsoft.com/en-us/windows/deployment/update/waas-optimize-windows-10-updates> <https://docs.microsoft.com/en-us/windows/deployment/update/waas-delivery-optimization>

NEW QUESTION 15

- (Exam Topic 4)

Note: This question is part of a series of questions that present the same scenario. Each question in the series contains a unique solution that might meet the stated goals. Some question sets might have more than one correct solution, while others might not have a correct solution.

After you answer a question in this section, you will NOT be able to return to it. As a result, these questions will not appear in the review screen.

A user named User2 has a computer named Computer2 that runs Windows 10. User2 joins Computer2 to contoso.com by using user2@contoso.com.

Computer1 contains a folder named Folder1. Folder1 is in drive C and is shared as Share1. Share1 has the permission shown in the following table.

Group	Share permission
Everyone	Full control
AzureAD\user1@contoso.com	Owner

A user named User2 has a computer named Computer2 that runs Windows 10. User2 joins Computer2 to contoso.com by using user2@contoso.com.

User2 attempts to access Share1 and receives the following error message: "The username or password is incorrect."

You need to ensure that User2 can connect to Share1.

Solution: You create a local group on Computer1 and add the Guest account to the group. You grant the group Modify access to Share1.

Does this meet the goal?

- A. Yes
- B. No

Answer: B

NEW QUESTION 18

- (Exam Topic 4)

Your network contains an Active Directory domain that is synced to a Microsoft Azure Active Directory (Azure AD) tenant.

The company plans to purchase computers preinstalled with Windows 10 Pro for all users. The company the following requirements:

- The new computers must be upgraded to Windows 10 Enterprise automatically.
- The new computers must be joined to Azure AD automatically when the user starts the new computers for the first time.
- The users must not be required to accept the End User License Agreement (EULA).

You need to deploy the new computers. What should you do?

- A. Make use of the wipe and load refresh deployment method.
- B. Perform in-place upgrade on the new computers.
- C. Provide provisioning packages for the new computers.
- D. Make use of Windows Autopilot.

Answer: D

Explanation:

Windows Autopilot is a collection of technologies used to set up and pre-configure new devices, getting them ready for productive use. You can also use Windows Autopilot to reset, repurpose and recover devices.

The OEM Windows 10 installation on the new computers can be transformed into a "business-ready" state, applying settings and policies, installing apps, and even changing the edition of Windows 10 being used (e.g. from Windows 10 Pro to Windows 10 Enterprise) to support advanced features.

The only interaction required from the end user is to connect to a network and to verify their credentials. Everything beyond that is automated.

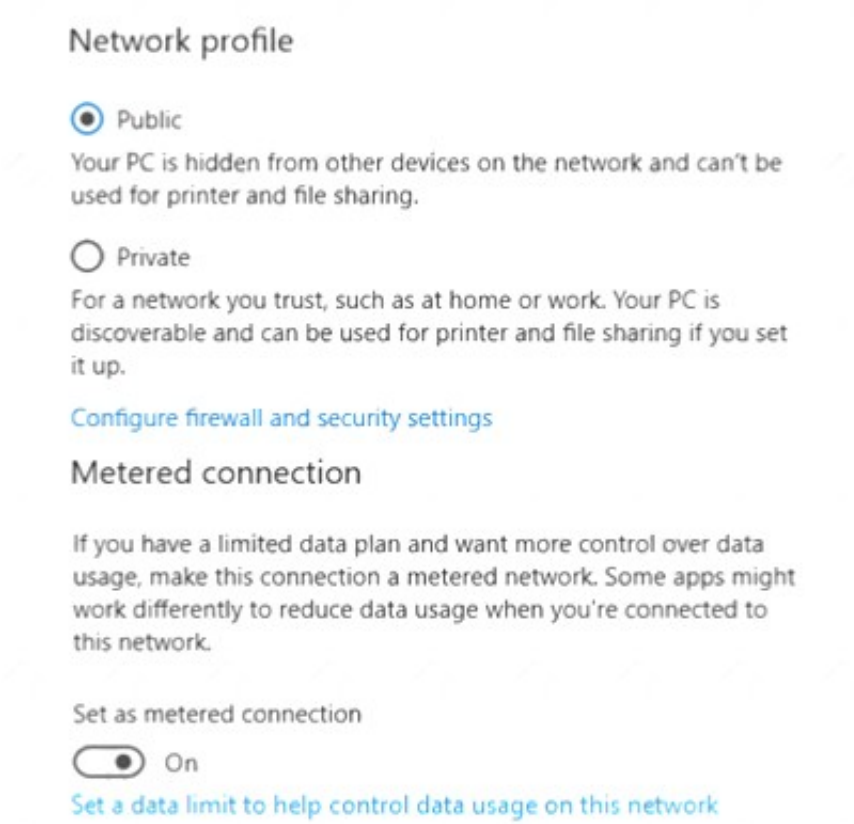
Reference:
<https://docs.microsoft.com/en-us/windows/deployment/windows-autopilot/windows-autopilot>

NEW QUESTION 22

- (Exam Topic 4)

You have a computer that runs Windows 10.

From the Settings app, you view the connection properties shown in the following exhibit.



Use the drop-down menus to select the answer choice that completes each statement based on the information presented in the graphic.

NOTE: Each correct selection is worth one point.

To enable Windows Remote Management (WinRM), you must first [answer choice].

set the Network profile to Private
run winrm qc at the command prompt
turn off Metered connection

To ensure that Microsoft OneDrive syncs, you must first [answer choice].

set the Network profile to Private
run winrm qc at the command prompt
turn off Metered connection

- A. Mastered
- B. Not Mastered

Answer: A

Explanation:

To enable Windows Remote Management (WinRM), you must first [answer choice].

set the Network profile to Private
run winrm qc at the command prompt
turn off Metered connection

To ensure that Microsoft OneDrive syncs, you must first [answer choice].

set the Network profile to Private
run winrm qc at the command prompt
turn off Metered connection

NEW QUESTION 24

- (Exam Topic 4)

You have a computer named Client1 that runs Windows 11. Client1 hosts a Hyper-V virtual machine named VM1 that runs Windows 11 Pro. VM1 is in the running state.
You need to enable Windows Sandbox on VM1.
Which five actions should you perform in sequence? To answer, move the appropriate actions from the list of actions to the answer area and arrange them in the correct order.

Actions

From VM1, run the Enable-WindowsOptionalFeature cmdlet.

Stop VM1.

From Client1, run the Set-VMProcessor cmdlet.

From Client1, run the Enable-WindowsOptionalFeature cmdlet.

Sign in to VM1.

Start VM1.

Answer Area

- A. Mastered
- B. Not Mastered

Answer: A

Explanation:

Actions

From VM1, run the Enable-WindowsOptionalFeature cmdlet.

Stop VM1.

From Client1, run the Set-VMProcessor cmdlet.

From Client1, run the Enable-WindowsOptionalFeature cmdlet.

Sign in to VM1.

Start VM1.

Answer Area

Stop VM1.

From Client1, run the Set-VMProcessor cmdlet.

From Client1, run the Enable-WindowsOptionalFeature cmdlet.

Sign in to VM1.

Start VM1.

NEW QUESTION 26

- (Exam Topic 4)
You plan to deploy Windows 10 Enterprise to company-owned devices. You capture a Windows 10 image file from a reference device.
You need to generate catalog files and answer files for the deployment.
What should you use for each file? To answer, select the appropriate options in the answer area.
NOTE: Each correct selection is worth one point.

Catalog file:

Deployment Image Servicing and Management (DISM)

Windows Configuration Designer

Windows Deployment Services (WDS)

Windows System Image Manager (Windows SIM)

Answer file:

Deployment Image Servicing and Management (DISM)

Windows Configuration Designer

Windows Deployment Services (WDS)

Windows System Image Manager (Windows SIM)

- A. Mastered
- B. Not Mastered

Answer: A

Explanation:

Graphical user interface, text, application Description automatically generated
References:
https://docs.microsoft.com/en-us/windows-hardware/customize/desktop/wsim/open-a-windows-image-or-catalo

NEW QUESTION 28

- (Exam Topic 4)
You have a file named Reg1.reg that contains the following content.
Windows Registry Editor Version 5.00

```
[HKEY_CLASSES_ROOT\Directory\Background\shell\Notepad]

[HKEY_CLASSES_ROOT\Directory\Background\shell\Notepad\command]

@="notepad.exe"
```

What is the effect of importing the file?

A. A key named command will be renamed as notepad.exe.
B. In a key named Notepad, the command value will be set to @="notepad.exe".
C. In a key named command, the default value will be set to notepad.exe.

Answer: C

NEW QUESTION 29

- (Exam Topic 4)
You plan to install Windows 10 by using a Windows Setup answer file. You need to perform the following actions during the installation:

- Add a local account named LocalAdmin to the Administrators group.
- Add the model and manufacturer information.
- Configure the disks and partitions.

Which Windows Setup configuration pass should you configure for each action? To answer, drag the appropriate configuration passes to the correct actions. Each configuration pass may be used once, more than once, or not at all. You may need to drag the split bar between panes or scroll to view content.
NOTE: Each correct selection is worth one point.

Configuration Pass

auditSystem	auditUser
generalize	offlineServicing
oobeSystem	specialize
windowsPE	

Answer Area

Add a local account named LocalAdmin to the Administrators group:	
Add the model and manufacturer information:	
Configure the disks and partitions:	

- A. Mastered
- B. Not Mastered

Answer: A

Explanation:

Configuration Pass

auditSystem	auditUser
generalize	offlineServicing
oobeSystem	specialize
windowsPE	

Answer Area

Add a local account named LocalAdmin to the Administrators group:	oobeSystem
Add the model and manufacturer information:	specialize
Configure the disks and partitions:	windowsPE

NEW QUESTION 30

- (Exam Topic 4)
You have a computer named Computer1. Computer1 runs Windows 10 Pro. Computer1 has a cellular connection and a Wi-Fi connection. You want to prevent Computer1 from using the cellular connection unless a you manually connects to the cellular network. What should you do?
To complete this task, sign in to the required computer or computers.

- A. Mastered
- B. Not Mastered

Answer: A

Explanation:

- > Select the Network icon.
icon on the lower right corner of the taskbar, and then select thceellular network
 - > Clear the Let Windows manage this connection check box.
- Reference:
<https://support.microsoft.com/en-za/help/10739/windows-10-cellular-settings>

NEW QUESTION 32

- (Exam Topic 4)
You are planning a recovery strategy for computers that run Windows 10.
You need to create recovery procedures to roll back feature updates and quality updates.
What should you include in the procedures? To answer, select the appropriate options in the answer area. NOTE: Each correct selection is worth one point.

To roll back feature updates:

Recovery from the Settings app

Windows Update from the Settings app

Programs and Features from the Control Panel

Troubleshoot from the Settings app

To roll back quality updates:

Recovery from the Settings app

Windows Update from the Settings app

Programs and Features from the Control Panel

Troubleshoot from the Settings app

- A. Mastered
- B. Not Mastered

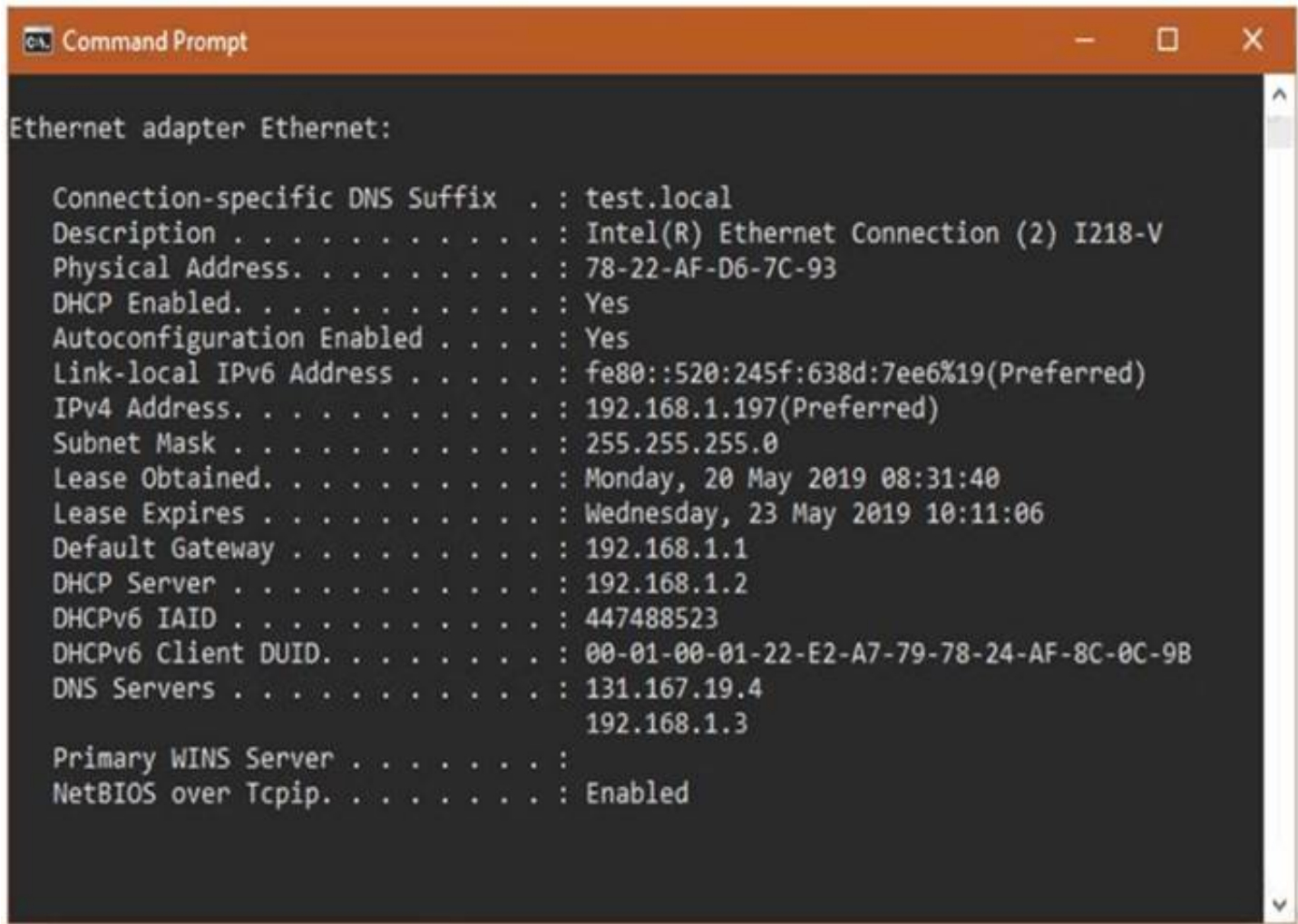
Answer: A

Explanation:

References:
<https://www.thewindowsclub.com/rollback-uninstall-windows-10-creators-update> <https://www.dummies.com/computers/pcs/undo-windows-update/>

NEW QUESTION 35

- (Exam Topic 4)
Your network contains an Active Directory domain. The domain contains computers that run Windows 10. A user named Mia Hamm has a computer named Computer1. Mia Hamm reports that when she logs on to Computer1, she cannot access servers on the network but she can access computers on the internet.
You run the ipconfig command on Computer1 and receive the following output.



You successfully ping the default gateway, the DNS servers, and the DHCP server. You need to resolve the connectivity problem on Computer1.
Which setting should you configure? To answer, select the appropriate options in the answer area.

Internet Protocol Version 4 (TCP/IPv4) Properties

GeneralAlternate Configuration

You can get IP settings assigned automatically if your network supports this capability. Otherwise, you need to ask your network administrator for the appropriate IP settings.

☒ Obtain an IP address automatically

☐ Use the following IP address:

IP address:

Subnet mask:

Default gateway:

☐ Obtain DNS server address automatically

☒ Use the following DNS server addresses:

Preferred DNS server:

131 . 167 . 19 . 4

Alternate DNS server:

192 . 168 . 1 . 3

☐ Validate settings upon exit

Advanced...

- A. Mastered
- B. Not Mastered

Answer: A

Explanation:

Graphical user interface Description automatically generated
The preferred DNS server is located on the internet as it has a public IP Address. The local DNS server should be the preferred DNS server. We could manually change the preferred and alternate DNS server addresses or we could select the "Obtain DNS server address automatically" option to have the DNS servers configured through DHCP.

NEW QUESTION 39

- (Exam Topic 4)
Note: This question is part of series of questions that present the same scenario. Each question in the series contains a unique solution that might meet the stated goals Some question sets might have more than one correct solution, while others might not have a correct solution.
After you answer a question In this section, you will NOT be able to return to It. As a result these question will not appear In the review screen.
You have two computers named Computer1 and Computer2 that run Windows 10.
You have an Azure Active Directory (Azure AD) user account named admin@contoso.com that is m the local Administrators group on each computer.
You sign m to Compute1 by using admin@contoso.com.
You need to ensure that you can use Event Viewer on Computer1 to connect to the event logs on Computer?.
Solution: On Computer2, you create a Windows Defender Firewall rule that allows eventwr.exe. Does this meet the goal?

- A. Yes
- B. No

Answer: B

NEW QUESTION 41

- (Exam Topic 4)
You have a computer named Computer1 that runs Windows 10.
The relevant services on Computer1 are shown in the following table.

Name	Startup type	Status	Dependent on
Service1	Automatic	Stopped	Service2, Service3
Service2	Automatic	Stopped	Service6
Service3	Disabled	Running	None
Service4	Disabled	Stopped	Service5
Service5	Automatic	Running	None
Service6	Manual	Stopped	None

Which service will start after you restart Computer1?

- A. Service3 and Services only
- B. Service 1, Setvice2. and Services
- C. Service2, Services, and Service6
- D. Services only

Answer: C

Explanation:

Service1 cannot start because it is dependent on Service3 which is disabled.

Service2 will start because it is set to Automatic. Service2 starting will cause Service6 to start. Service3 will not start because it is disabled.

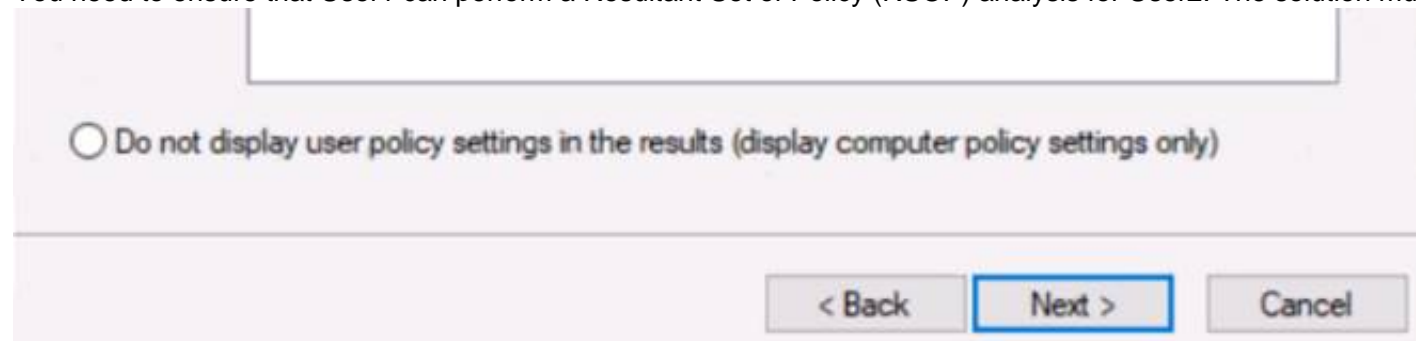
Service4 will not start because it is disabled.

Service5 will start because it is set to Automatic and is not dependent on any other services. Service6 will start because Service2 is dependent on Service6.

NEW QUESTION 46

- (Exam Topic 4)

You need to ensure that User1 can perform a Resultant Set of Policy (RSOP) analysis for User2. The solution must use the principle of least privilege.



What should you do first?

- A. Add User1 to the local Administrators group.
- B. Add User2 to the local Performance Monitor Users group.
- C. Run RSoP from an elevated-privilege account.
- D. Add User1 to the local Performance Monitor Users group.

Answer: D

NEW QUESTION 51

- (Exam Topic 4)

Please wait while the virtual machine loads. Once loaded, you may proceed to the lab section. This may take a few minutes, and the wait time will not be deducted from your overall test time.

When the Next button is available, click it to access the lab section. In this section, you will perform a set of tasks in a live environment. While most functionality will be available to you as it would be in a live environment, some functionality (e.g., copy and paste, ability to navigate to external websites) will not be possible by design.

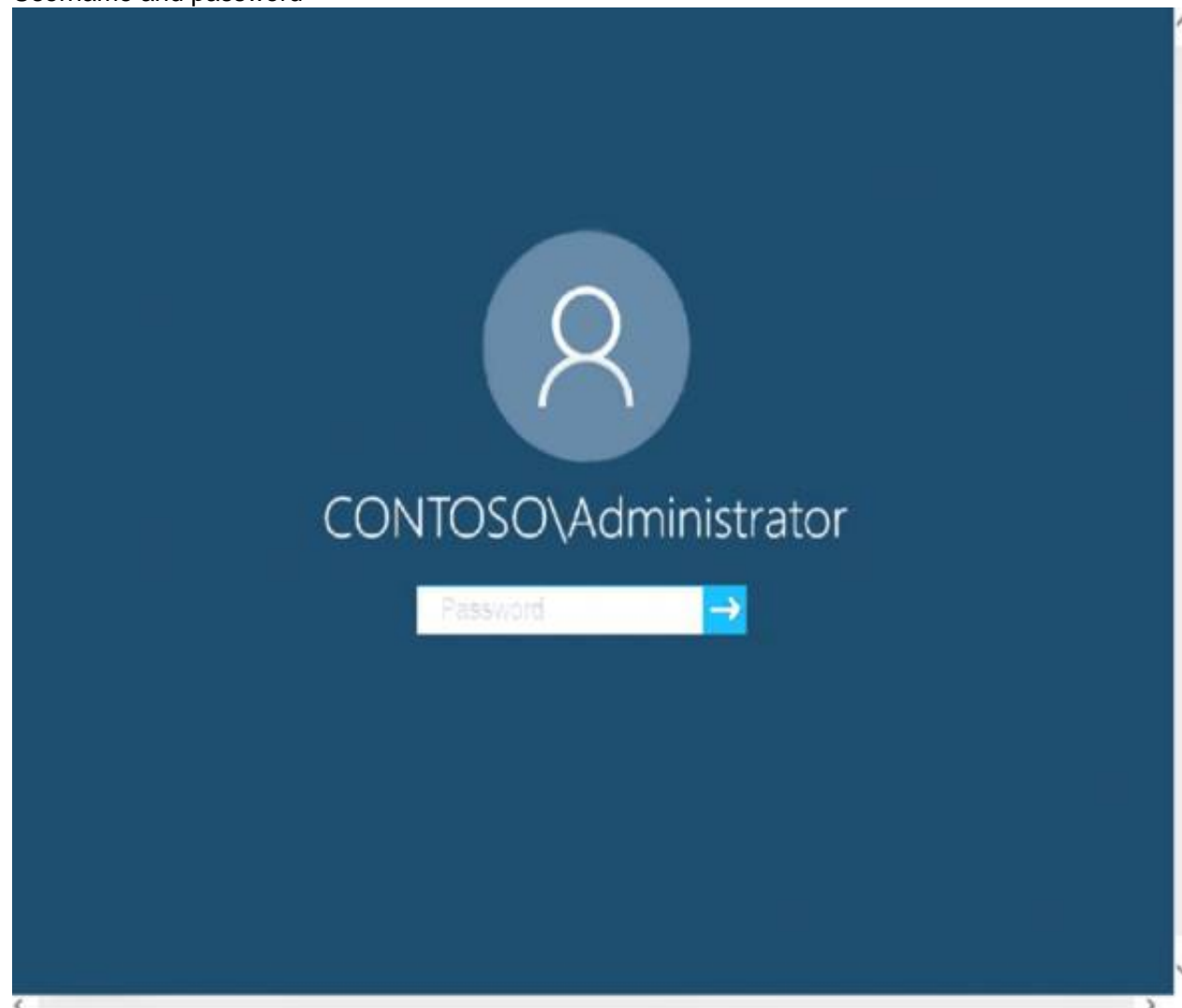
Scoring is based on the outcome of performing the tasks stated in the lab. In other words, it doesn't matter how you accomplish the task, if you successfully perform it, you will earn credit for that task.

Labs are not timed separately, and this exam may more than one lab that you must complete. You can use as much time as you would like to complete each lab.

But, you should manage your time appropriately to ensure that you are able to complete the lab(s) and all other sections of the exam in the time provided.

Please note that once you submit your work by clicking the Next button within a lab, you will NOT be able to return to the lab.

Username and password



Use the following login credentials as needed:

To enter your password, place your cursor in the Enter password box and click on the password below.

Username: Contoso/Administrator

Password: Passw0rd!

The following information is for technical support purposes only: Lab Instance: 11145882

WELCOME TO SERVER MANAGER

QUICK START

- 1 Configure this local server
- 2 Add roles and features
- 3 Add other servers to manage
- 4 Create a server group
- 5 Connect this server to cloud services

WHAT'S NEW

LEARN MORE

ROLES AND SERVER GROUPS

Roles: 3 | Server groups: 1 | Servers total: 1

- AD DS** (1)
 - Manageability
 - Events
 - Services
 - Performance
 - BPA results
- DNS** (1)
 - Manageability
 - Events
 - Services
 - Performance
 - BPA results
- File and Storage Services** (1)
 - Manageability
 - Events
 - Services
 - Performance
 - BPA results
- Local Server** (1)
 - Manageability
 - Events
 - Services (2)
 - Performance
 - BPA results
- All Servers** (1)
 - Manageability
 - Events
 - Services (2)
 - Performance
 - BPA results

Tasks **Computers**



You need to ensure that all the current and future users in the Active Directory domain can establish Remote Desktop connections to Client1. The solution must use the principle of least privilege.

To complete this task, sign in to the required computer or computers.

- A. Mastered
- B. Not Mastered

Answer: A

Explanation:

Step 1. Add Remote Desktop Users to the Remote Desktop Users Group.




Open Server Manager.

- > From Tools menu, select Active Directory Users and Computers
- > Double click at your domain on the left and then select Builtin.
- > Open Remote Desktop Users on the right pane.
- > At Members tab, click Add.
- > Type the AD users that you want to give Remote access to the RDS Server and click OK.
- > After selecting the remote desktop users, click OK again to close the window.

Step 2. Allow the log on through remote desktop Services.

* 1. Open Group Policy Editor. To do that:

* a. Simultaneously press the Windows + R keys to open run command box. 

* b. Type gpedit.msc and press Enter.

* 2. In Group Policy Editor navigate to: Computer Configuration > Windows Settings > Security Settings > Local Policies > User Rights Assignment.

* 3. At the right Pane: double click at Allow log on through Remote Desktop Services.

* 4. Click Add User or Group.

* 5. Type remote and then click Check Names.

* 6. Select the Remote Desktop Users and click OK.

* 7. Click OK at 'Select users, computers...' window.

* 8. Finally click OK again and close Group Policy Editor.

Reference:

<https://www.wintips.org/fix-to-sign-in-remotely-you-need-the-right-to-sign-in-through-remote-desktop-services>

NEW QUESTION 54

- (Exam Topic 4)

Note: This question is part of a series of questions that present the same scenario. Each question in the series contains a unique solution that might meet the stated goals. Some question sets might have more than one correct solution, while others might not have a correct solution.

After you answer a question in this section, you will NOT be able to return to it. As a result, these questions will not appear in the review screen.

Your network contains an Active Directory domain named contoso.com. The domain contains the users shown in the following table.

Name	Member of
User2	Domain Users
User3	Domain Admins
User4	Server Operators

You have a computer named Computer1 that runs Windows 10 and is in a workgroup.

A local standard user on Computer1 named User1 joins the computer to the domain and uses the credentials of User2 when prompted.

You need to ensure that you can rename Computer1 as Computer33. Solution: You use the credentials of User2 on Computer1.

Does this meet the goal?

A. Yes

B. No

Answer: B

Explanation:

Renaming a domain-joined computer will also rename the computer account in the domain. To do this, you need domain administrator privileges.

User2 is a domain user, not an administrator. Use User3's credentials instead. References:

<https://docs.microsoft.com/en-us/windows/security/identity-protection/access-control/active-directory-security-g>

NEW QUESTION 56

- (Exam Topic 4)

Your network contains an Active Directory domain. The domain contains a user named User1. User1 creates a Microsoft account.

User1 needs to sign in to cloud resources by using the Microsoft account without being prompted for credentials.

Which settings should User1 configure?

A. User Accounts in Control Panel

B. Email & app accounts in the Settings app

C. Users in Computer Management

D. Users in Active Directory Users and Computers

Answer: B

Explanation:

References:

<https://support.microsoft.com/en-za/help/4028195/microsoft-account-how-to-sign-in>

NEW QUESTION 58

- (Exam Topic 4)

Note: This question is part of a series of questions that present the same scenario. Each question in the series contains a unique solution that might meet the stated goals. Some question sets might have more than one correct solution, while others might not have a correct solution.

After you answer a question in this section, you will NOT be able to return to it. As a result, these questions will not appear in the review screen.

Your network contains an Active Directory domain. The domain contains a computer named Computer1 that runs Windows 8.1.

Computer1 has apps that are compatible with Windows 10.

You need to perform a Windows 10 in-place upgrade on Computer1.

Solution: You copy the Windows 10 installation media to a Microsoft Deployment Toolkit (MDT) deployment share. You create a task sequence, and then you run the MDT deployment wizard on Computer1.

Does this meet the goal?

- A. Yes
- B. No

Answer: A

Explanation:

Reference:
<https://docs.microsoft.com/en-us/windows/deployment/deploy-windows-mdt/upgrade-to-windows-10-with-the>

NEW QUESTION 60

- (Exam Topic 4)
You have a computer named Computer1 that runs Windows 10. Computer1 connects to multiple wireless networks. You need to view the wireless networks to which Computer1 connects. What should you use?

- A. the System log in Event Viewer
- B. Wi-Fi in the Settings app
- C. the properties of the wireless adapter in Network Connections in Control Panel
- D. the Details tab for the wireless adapter in Device Manager

Answer: B

Explanation:

Reference:
<https://www.windowscentral.com/how-connect-wi-fi-network-windows-10>

NEW QUESTION 64

- (Exam Topic 4)
You have the source files shown in the following table.

Source	Location
Custom Windows 10 image	D:\Folder1\Image1.wim
Windows 10 language pack DVD	E:\

You mount an image from Image1.wim to a folder named C:\Mount. You need to add the French language pack to the mounted image. How should you complete the command? To answer, select the appropriate options in the answer area.
NOTE: Each correct selection is worth one point.

Add-WindowsCapability

Add-WindowsFeature

Dism.exe

Setup.exe

/Image:

"C:\Mount"

"C:\Mount\Windows"

"C:\Windows"

"D:\Folder1\Image1.wim"

/Add-Package /PackagePath:"E:\x64\langpacks\Microsoft-Windows-Client-Language-Pack_x64_fr-fr.cab"

- A. Mastered
- B. Not Mastered

Answer: A

Explanation:

Note: The referenced document has the mount directory as C:\Mount\Windows. In this question, the mount directory is C:\Mount.
Reference:
<https://docs.microsoft.com/en-us/windows-hardware/manufacture/desktop/add-language-packs-to-windows>

NEW QUESTION 67

- (Exam Topic 4)
You have 200 computers that run Windows 10 and are joined to an Active Directory domain. You need to enable Windows Remote Management (WinRM) on all the computers by using Group Policy. Which three actions should you perform? Each correct answer presents part of the solution.
NOTE: Each correct selection is worth one point.

- A. Set the Startup Type of the Windows Remote Management (WS-Management) service to Automatic.
- B. Enable the Windows Firewall: Allow inbound remote administration exception setting.
- C. Enable the Allow remote server management through WinRM setting.
- D. Enable the Windows Firewall: Allow inbound Remote Desktop exceptions setting.
- E. Enable the Allow Remote Shell access setting.
- F. Set the Startup Type of the Remote Registry service to Automatic.

Answer: ABC

Explanation:

References:

<https://support.auvik.com/hc/en-us/articles/204424994-How-to-enable-WinRM-with-domain-controller-Group-P>

NEW QUESTION 68

- (Exam Topic 4)

You have a computer named Computer1. Computer1 runs Windows 10 Pro. You attempt to start Computer1 but you receive the following error message: Bootmgr is missing.

You need to be able to start Computer1.

What should you do?

- A. Start the computer in recovery mode and run the boocrec /rebuildbcd command.
- B. Start the computer in recovery mode and run the dislcparc /repair command.
- C. Start the computer in recovery mode and run the bcdboot /s command.
- D. Start the computer in recovery mode and run the booccfg /debug command.

Answer: A

Explanation:

Reference:

<https://neosmart.net/wiki/bootmgr-is-missing/>

NEW QUESTION 69

- (Exam Topic 4)

Please wait while the virtual machine loads. Once loaded, you may proceed to the lab section. This may take a few minutes, and the wait time will not be deducted from your overall test time.

When the Next button is available, click it to access the lab section. In this section, you will perform a set of tasks in a live environment. While most functionality will be available to you as it would be in a live environment, some functionality (e.g., copy and paste, ability to navigate to external websites) will not be possible by design.

Scoring is based on the outcome of performing the tasks stated in the lab. In other words, it doesn't matter how you accomplish the task, if you successfully perform it, you will earn credit for that task.

Labs are not timed separately, and this exam may more than one lab that you must complete. You can use as much time as you would like to complete each lab.

But, you should manage your time appropriately to ensure that you are able to complete the lab(s) and all other sections of the exam in the time provided.

Please note that once you submit your work by clicking the Next button within a lab, you will NOT be able to return to the lab.

Username and password



Use the following login credentials as needed:

To enter your password, place your cursor in the Enter password box and click on the password below.

Username: Contoso/Administrator

Password: Passw0rd!

The following information is for technical support purposes only: Lab Instance: 11145882

The screenshot shows the Windows Server Manager interface. On the left is a navigation pane with 'Dashboard' selected. The main area displays a 'WELCOME TO SERVER MANAGER' message with a 'Configure this local server' wizard. The wizard steps are: 1. Configure this local server, 2. Add roles and features, 3. Add other servers to manage, 4. Create a server group, and 5. Connect this server to cloud services. Below the wizard is a 'ROLES AND SERVER GROUPS' section showing a list of roles and server groups. The roles listed are AD DS, DNS, File and Storage Services, Local Server, and All Servers. Each role has a 'Manageability' section with links to 'Events', 'Services', 'Performance', and 'BPA results'. The 'Local Server' and 'All Servers' groups are highlighted in red. At the bottom, there are 'Tasks' and 'Computers' tabs.



Users who attempt to sign in to the domain from Client3 report that the sign-ins fail. You need to resolve the issue. To complete this task, sign in to the required computer or computers.

- A. Mastered
- B. Not Mastered

Answer: A

Explanation:

- Use a local administrator account to log on to the computer.
- Select Start, press and hold (or right-click) Computer > Properties.
- Select Change settings next to the computer name.
- On the Computer Name tab, select Change.
- Under the Member of heading, select Workgroup, type a workgroup name, and then select OK.

- When you are prompted to restart the computer, select OK.
- On the Computer Name tab, select Change again.
- Under the Member of heading, select Domain, and then type the domain name.
- Select OK, and then type the credentials of the user who has permissions in the domain.
- When you are prompted to restart the computer, select OK.
- Restart the computer.

Reference:

<https://support.microsoft.com/en-us/help/2771040/the-trust-relationship-between-this-workstation-and-the-prima>

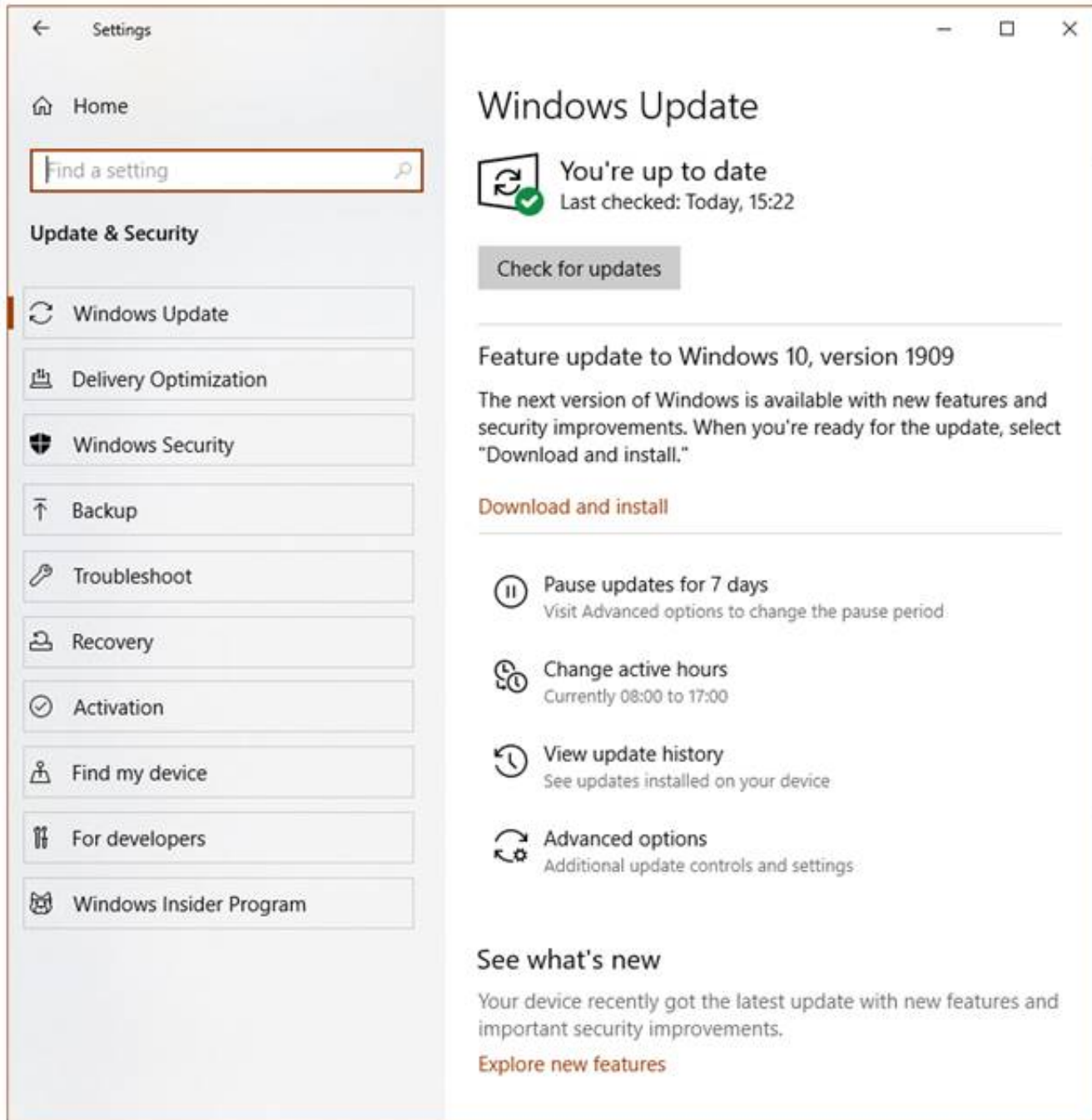
NEW QUESTION 73

- (Exam Topic 4)

You have a computer named Computer1. Computer1 runs Windows 10 Pro. You want to use Computer1 to test new Windows features.

You need to configure Computer1 to receive preview builds of Windows 10 as soon as they are available. You open the Update & Security section in the Settings app.

What should you configure? To answer, select the appropriate options in the answer area.



- A. Mastered
- B. Not Mastered

Answer: A

Explanation:

Graphical user interface, text, application, email Description automatically generated

Reference:

<https://insider.windows.com/en-us/getting-started/>

NEW QUESTION 77

- (Exam Topic 4)

You have a computer named Computer1 that runs Windows 10. You deploy an application named Application1 to Computer1. You need to assign credentials to Application1.

You need to meet the following requirements:

- Ensure that the credentials for Application1 cannot be used by any user to log on to Computer1.
- Ensure that the principle of least privilege is maintained.

What should you do?

- A. Configure Application1 to sign in as the Local System account and select the Allow service to interact with desktop check box.
- B. Create a user account for Application1 and assign that user account the Deny log on locally user right
- C. Create a user account for Application1 and assign that user account the Deny log on as a service user right

D. Configure Application1 to sign in as the Local Service account and select the Allow service to interact with desktop check box.

Answer: B

Explanation:

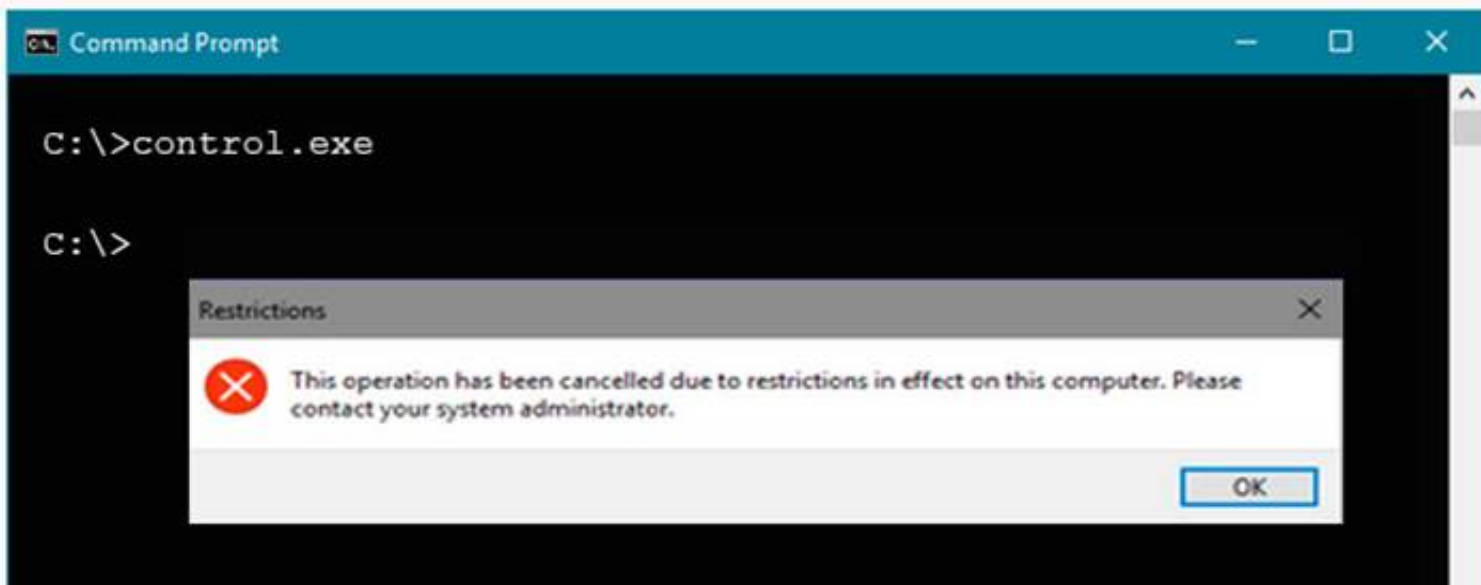
Reference:

<https://docs.microsoft.com/en-us/windows/security/threat-protection/security-policy-settings/deny-log-on-locall>

NEW QUESTION 79

- (Exam Topic 4)

You have a computer that runs Windows 10 and is joined to Azure Active Directory (Azure AD). You attempt to open Control Panel and receive the error message shown on the following exhibit.



You need to be able to access Control Panel. What should you modify?

- A. the PowerShell execution policy
- B. the Local Group Policy
- C. the Settings app
- D. a Group policy preference

Answer: B

Explanation:

References:

<https://windows10skill.com/this-operation-has-been-cancelled-due-to-restrictions-in-effect-on-this-pc/>

NEW QUESTION 81

- (Exam Topic 4)

You have a computer named Computer1 that runs Windows 10.

From Event Viewer on Computer1, you have a task named Action1 that is attached to the following event: ➤ Log: System

- Source: Kernel-General
- Event ID: 16

You need to modify the settings of Action1. What should you use?

- A. the Settings app
- B. Task Scheduler
- C. Event Viewer
- D. System Configuration

Answer: C

Explanation:

An Event Viewer task is created and modified in Event Viewer. References:

<https://www.techrepublic.com/article/how-to-use-custom-views-in-windows-10s-event-viewer/>

NEW QUESTION 85

- (Exam Topic 4)

You have a computer named Computer1 that runs Windows 10. You are troubleshooting connectivity issues on Computer1.

You need to view the remote addresses to which Computer1 has active TCP connections. Which tool should you use?

- A. Performance Monitor
- B. Task Manager
- C. Resource Monitor
- D. Windows Defender Firewall with Advanced Security

Answer: C

NEW QUESTION 89

- (Exam Topic 4)

Your network contains an Active Directory domain. The domain contains a computer named Computer1 that runs Windows 10.

The domain contains the users shown in the following table.

Name	Member of
User1	Domain Users
User2	Domain Users, Guests
User3	Domain Users, Administrators

Computer1 has the local users shown in the following table.

Name	Member of
User4	Users
User5	Administrators

All users have Microsoft accounts.

Which two users can be configured to sign in by using their Microsoft account? Each correct answer presents part of the solution.

NOTE: Each correct selection is worth one point.

- A. User1
- B. User2
- C. User3
- D. User4
- E. User5

Answer: DE

NEW QUESTION 91

- (Exam Topic 2)

You need to meet the technical requirement for User6. What should you do?

- A. Add User6 to the Remote Desktop Users group in the domain.
- B. Remove User6 from Group2 in the domain.
- C. Add User6 to the Remote Desktop Users group on Computer2.
- D. Add User6 to the Administrators group on Computer2.

Answer: B

NEW QUESTION 95

- (Exam Topic 2)

You need to meet the technical requirements for EFS on ComputerA. What should you do?

- A. Run certutil.exe, and then add a certificate to the local computer certificate store.
- B. Run cipher.exe, and then add a certificate to the local computer certificate store.
- C. Run cipher.exe, and then add a certificate to the local Group Policy.
- D. Run certutil.exe, and then add a certificate to the local Group Policy.

Answer: D

Explanation:

References:

<https://docs.microsoft.com/en-us/windows/security/information-protection/windows-information-protection/creating-a-certificate>

NEW QUESTION 100

- (Exam Topic 4)

You have a computer named Computer1. Computer1 runs Windows 10 Pro. Computer1 is experiencing connectivity issues.

You need to view the IP addresses of any remote computer that Computer1 has an active TCP connection to. Should you do?

- A. In Windows Administrative Tools, open Performance Monitor
- B. In the Control Panel, open Network and Internet Then select Network and Sharing Center
- C. In Windows Administrative Tools, open Resource Monitor
- D. In the Setting app
- E. open Update and Security Then open Windows Security and select Firewall and Network protection

Answer: C

NEW QUESTION 102

- (Exam Topic 4)

You have a computer named Computer1 that runs Windows 10.

On Computer1, you create the local users shown in the following table.

Name	Member of
User1	Users
User2	Users, Guests
User3	Power Users, Guest
User4	Guests, Users, Administrators
User5	Users, Distributed COM Users

Which three user profiles will persist after each user signs out? Each correct answer presents part of the solution.
NOTE: Each correct selection is worth one point.

- A. User1
- B. User2
- C. User3
- D. User4
- E. User5

Answer: ADE

NEW QUESTION 107

- (Exam Topic 4)
You enable controlled folder access in audit mode for several computers that run Windows 10. You need to review the events audited by controlled folder access. Which Event Viewer log should you view?

- A. Applications and Services\Microsoft\Windows\Windows Defender\Operational
- B. Applications and Services\Microsoft\Windows\Known Folders\Operational
- C. Windows\Security

Answer: A

Explanation:
<https://docs.microsoft.com/en-us/microsoft-365/security/defender-endpoint/evaluate-controlled-folder-access>

NEW QUESTION 108

- (Exam Topic 4)
You have computers that run Windows 10 as shown in the following table.

Name	IP address
CLIENT1	192.168.0.10
CLIENT2	192.168.1.10
CLIENT3	192.168.0.250
CLIENT4	192.168.0.240

CLIENT1 has the following IP configuration.

```
Connection-specific DNS Suffix . :  
IPv4 Address. . . . . : 192.168.0.10  
Subnet Mask . . . . . : 255.255.255.0  
Default Gateway . . . . . : 192.168.0.1
```

From CLIENT1, you ping CLIENT2 and CLIENT3 successfully, but when you ping CLIENT4, you get a Request timed out response. From CUENT3. you ping CLIENT4 successfully. Which computer and setting are misconfigured? To answer, select the appropriate options in the answer area.
NOTE: Each correct selection is worth one point.

Answer Area

Misconfigured computer:

CLIENT2
CLIENT3
CLIENT4

Misconfigured setting:

Default gateway
IP address
Subnet mask

- A. Mastered
- B. Not Mastered

Answer: A

Explanation:

Answer Area

Misconfigured computer:

CLIENT2
CLIENT3
CLIENT4

Misconfigured setting:

Default gateway
IP address
Subnet mask

NEW QUESTION 111

- (Exam Topic 4)

Note: This question is part of a series of questions that present the same scenario. Each question in the series contains a unique solution that might meet the stated goals. Some question sets might have more than one correct solution, while others might not have a correct solution.

After you answer a question in this section, you will NOT be able to return to it. As a result, these questions will not appear in the review screen.

You have a laptop named Computer1 that runs Windows 10.

When in range, Computer1 connects automatically to a Wi-Fi network named Wireless1. You need to prevent Computer1 from automatically connecting to Wireless1.

Solution: From the Settings app, you modify the properties of the Wireless1 known Wi-Fi network. Does this meet the goal?

- A. Yes
- B. No

Answer: A

Explanation:

Removing Wireless1 as a known Wi-Fi network on Computer1 will prevent it from automatically connecting. Note: You can also type netsh wlan show profiles in the Command Prompt to manage and delete wireless network profiles.

References:

<https://kb.netgear.com/29889/How-to-delete-a-wireless-network-profile-in-Windows-10>

NEW QUESTION 115

- (Exam Topic 4)

A user named User1 has a computer named Computer1 that runs Windows 10.

User1 connects to a Microsoft Azure virtual machine named VM1 by using Remote Desktop. User1 creates a VPN connection to a partner organization. When the VPN connection is established, User1 cannot connect to VM1. When User1 disconnects from the VPN, the user can connect to VM1. You need to ensure that User1 can connect to VM1 while connected to the VPN. What should you do?

- A. From the proxy settings, add the IP address of VM1 to the bypass list to bypass the proxy.
- B. From the properties of VPN1, clear the Use default gateway on remote network check box.
- C. From the properties of the Remote Desktop connection to VM1, specify a Remote Desktop Gateway (RDGateway).
- D. From the properties of VPN1, configure a static default gateway address.

Answer: B

Explanation:

References:

<https://www.stevejenkins.com/blog/2010/01/using-the-local-default-gateway-with-a-windows-vpn-connection/>

NEW QUESTION 116

- (Exam Topic 4)

Your network contains an Active Directory domain that contains the objects shown in the following table.

Name	Type	Member of
User1	User	Group1
User2	User	Group2
Group1	Global group	None
Group2	Domain local group	None
Computer1	Computer	Group1
Computer2	Computer	Group1

Computer1 contains the shared folders shown in the following table.

Name	NTFS permission	Share permission	Folder enumeration mode
Share1	Group1: Write	Group1: Full control	Access-based
Share2\$	Group2: Full control	Group2: Read	Unrestricted

The computers have the network configurations shown in the following table.

Name	Network Discovery	Windows Defender Firewall
Computer1	On	Incoming connections: Block all connections to apps that are not on the list of allowed apps
Computer2	Off	Incoming connections: Block all connections to apps that are not on the list of allowed apps

For each of the following statements, select Yes if the statement is true. Otherwise, select No.

NOTE: Each correct selection is worth one point.

Statements	Yes	No
Share1 is listed if User1 connects to \\Computer1 from Computer2.	<input type="radio"/>	<input type="radio"/>
Share1 is listed if User2 connects to \\Computer1 from Computer2.	<input type="radio"/>	<input type="radio"/>
Share2\$ is listed if User2 connects to \\Computer1 from Computer2.	<input type="radio"/>	<input type="radio"/>

- A. Mastered
- B. Not Mastered

Answer: A

Explanation:

Box 1: Yes

User1 is in Group1 which has permission to access the share so the share will be visible. Box 2: No

User2 is in Group2 which does not have permission to access Share1. Access-based enumeration is enabled so Share1 will not be listed as User2 does not have permission to access it.

Box 3: No

Share2\$ is a hidden share (dollar sign appended) so the share will never be listed.

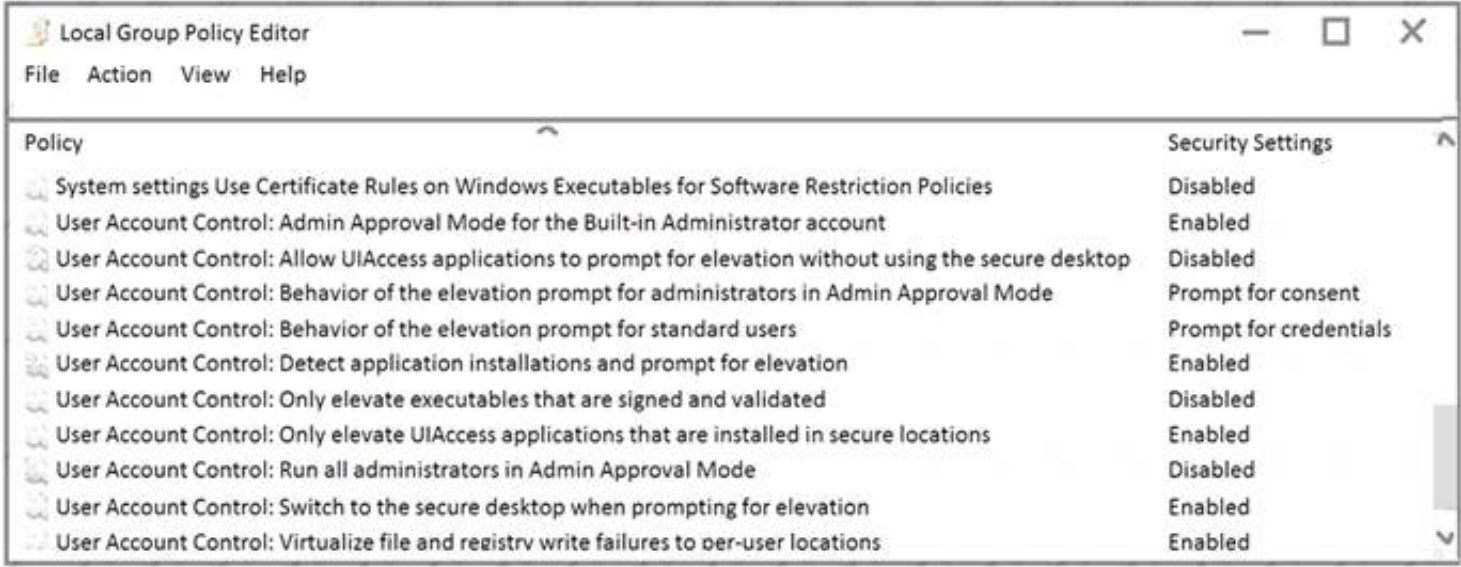
NEW QUESTION 118

- (Exam Topic 4)

You have a workgroup computer named Computer1 that runs Windows 10 and has the users shown in the following table.

Name	Member of
Administrator	Administrators
User1	Administrators
User2	Users

User Account Control (UAC) on Computer1 is configured as shown in the following exhibit.



For each of the following statements, select Yes if the statement is true. Otherwise, select No.
NOTE: Each correct selection is worth one point.

Statements	Yes	No
When Administrator opens a command prompt by using the Run as administrator option, the user will be prompted for consent.	<input type="radio"/>	<input type="radio"/>
When User1 opens a command prompt by using the Run as administrator option, the user will be prompted for consent.	<input type="radio"/>	<input type="radio"/>
When User2 opens a command prompt by using the Run as administrator option, the user will be prompted for credentials.	<input type="radio"/>	<input type="radio"/>

- A. Mastered
- B. Not Mastered

Answer: A

Explanation:

Box 1: Yes
User Account Control: Behavior of the elevation prompt for administrators in Admin Approval Mode is set to Prompt for consent When an operation requires elevation of privilege, the user is prompted to select either Permit or Deny. If the user selects Permit, the operation continues with the user's highest available privilege.

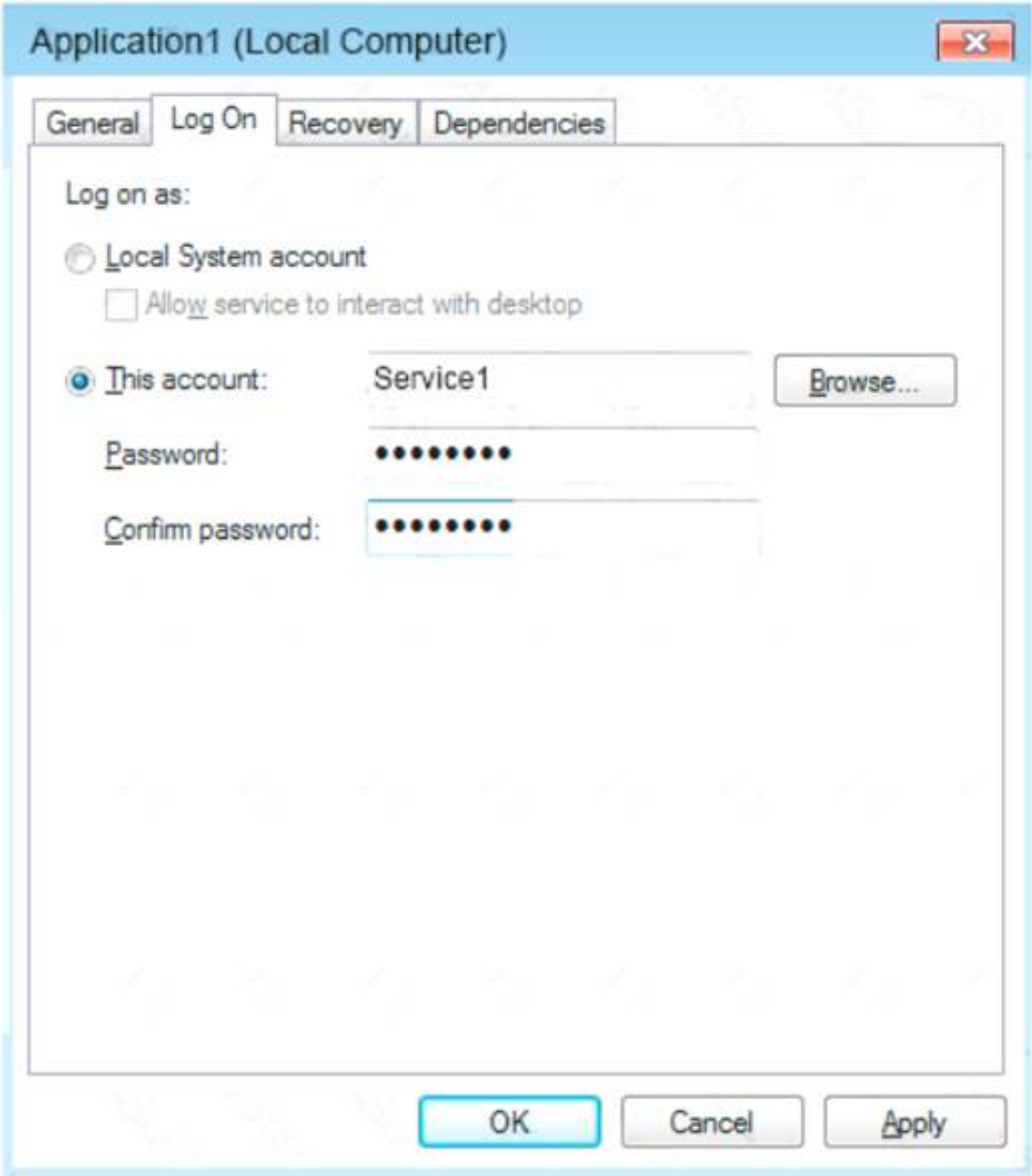
Box 2: Yes
User1 is a member of Administrators group.
User Account Control: Behavior of the elevation prompt for administrators in Admin Approval Mode is set to Prompt for consent When an operation requires elevation of privilege, the user is prompted to select either Permit or Deny. If the user selects Permit, the operation continues with the user's highest available privilege.

Box 3: Yes
User Account Control: Behavior of the elevation prompt for standard users is set to Prompt for credentials (Default) When an operation requires elevation of privilege, the user is prompted to enter an administrative user name and password. If the user enters valid credentials, the operation continues with the applicable privilege.

References:
<https://docs.microsoft.com/en-us/windows/security/identity-protection/user-account-control/user-account-control>

NEW QUESTION 122
- (Exam Topic 4)

Note: This question is part of a series of questions that present the same scenario. Each question in the series contains a unique solution that might meet the stated goals. Some question sets might have more than one correct solution, while others might not have a correct solution.
After you answer a question in this section, you will NOT be able to return to it. As a result, these questions will not appear in the review screen.
You have a computer named Computer1 that runs Windows10.
A service named Application1 is configured as shown in the exhibit.



You discover that a user used the Service1 account to sign in to Computer1 and deleted some files. You need to ensure that the identity used by Application1 cannot be used by a user to sign in to sign in to the desktop on Computer1. The solution must use the principle of least privilege. Solution: On Computer1, you configure Application1 to sign in as the LocalSystem account and select the Allow service to interact with desktop check box. You delete the Service1 account. Does this meet the goal?

- A. Yes
- B. No

Answer: B

Explanation:
<https://docs.microsoft.com/en-us/windows/win32/services/localsystem-account>

NEW QUESTION 126

- (Exam Topic 4)
 You have computers that run Windows 11 as shown in the following table.

Name	IP address	Joined to
Computer1	192.168.10.10	Active Directory
Computer2	192.168.10.15	Workgroup

You ping 192.168.10.15 from Computer1 and discover that the request timed out. You need to ensure that you can successfully ping 192.168.10.15 from Computer1. Solution: On Computer1, you turn off Windows Defender Firewall-Does this meet the goal?

- A. Yes
- B. No

Answer: B

NEW QUESTION 130

- (Exam Topic 4)
 Your network contains an Active Directory domain. The domain contains a computer named Computer1 that runs Windows 10. The domain contains the users shown in the following table.

Name	Member of
User1	Domain Users
User2	Domain Users, Guests
User3	Domain Users, Administrators

Computer has the local users shown in the following table.

Name	Member of
User4	Users
User5	Administrators

All users have Microsoft accounts.
Which two user can be configured to sign in by using their Microsoft account? Each correct answer presents part of the solution.
NOTE: Each correct selection is worth one point.

- A. User 1
- B. User 2
- C. User 3
- D. User 4
- E. User 5

Answer: CE

NEW QUESTION 131

- (Exam Topic 4)
Your network contains an on-premises Active Directory forest named contoso.com. The forest contains a user named User1 and two computers named Computer1 and Computer2 that run Windows 10.
User1 is configured as shown in the following exhibit.

User1 Properties

Member Of

Environment

Sessions

Remote control

Remote Desktop Services Profile

COM+

Dial-in

General

Address

Profile

Account

Telephones

Organization

User profile

Profile path: \\Server1\Profiles\User1

Logon script:

Home folder

☒ Local path:

☐ Connect:

To:

OK

Cancel

Apply

Help

You rename file \\Server1\Profiles\User1.V6\NTUSER.DAT as NTUSER.MAN.
For each of the following statements, select Yes if the statement is true. Otherwise, select No. NOTE: Each correct selection is worth one point.

Statements	Yes	No
On Computer1, if User1 adds a shortcut to the desktop, the shortcut will appear when the user signs in to Computer2.	<input type="radio"/>	<input type="radio"/>
On Computer1, if User1 modifies the background, and then signs out, the user will see the modified background when signing back in to Computer1.	<input type="radio"/>	<input type="radio"/>
On Computer1, if User1 modifies the background, and then signs out, the user will see the modified background when signing in to Computer2.	<input type="radio"/>	<input type="radio"/>

- A. Mastered
- B. Not Mastered

Answer: A

Explanation:

Statements	Yes	No
On Computer1, if User1 adds a shortcut to the desktop, the shortcut will appear when the user signs in to Computer2.	<input type="radio"/>	<input checked="" type="radio"/>
On Computer1, if User1 modifies the background, and then signs out, the user will see the modified background when signing back in to Computer1.	<input checked="" type="radio"/>	<input type="radio"/>
On Computer1, if User1 modifies the background, and then signs out, the user will see the modified background when signing in to Computer2.	<input type="radio"/>	<input checked="" type="radio"/>

NEW QUESTION 136

- (Exam Topic 4)

Note: This question is part of a series of questions that present the same scenario. Each question in the series contains a unique solution that might meet the stated goals. Some question sets might have more than one correct solution, while others might not have a correct solution. After you answer a question in this section, you will NOT be able to return to it. As a result, these questions will not appear in the review screen.

You have a computer named Computer1 that runs Windows 10.

You test Windows updates on Computer1 before you make the updates available to other users at your company.

You install a quality update that conflicts with a customer device driver. You need to remove the update from Computer1.

Solution: From an elevated command prompt, you run the wusa.exe command and specify the /uninstall parameter.

Does this meet the goal?

- A. Yes
- B. No

Answer: A

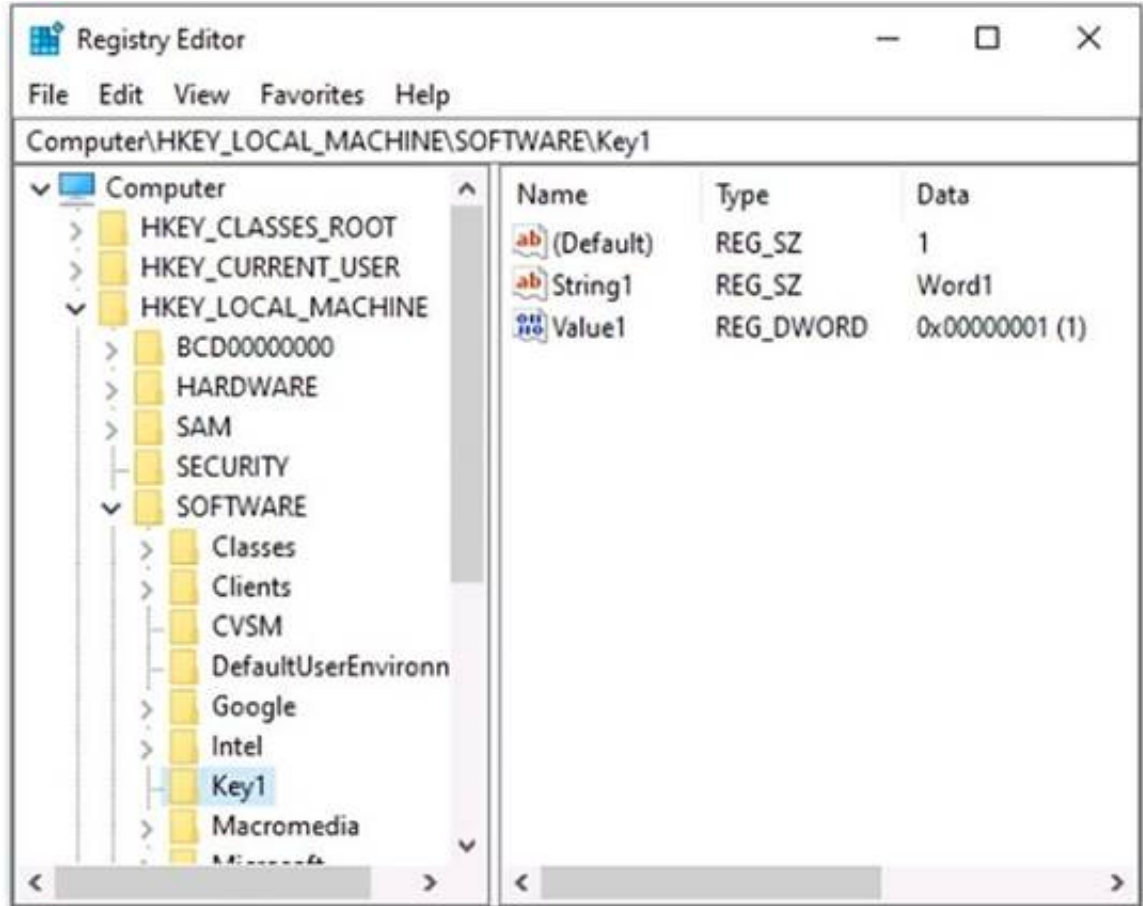
Explanation:

References:
<https://support.microsoft.com/en-us/help/934307/description-of-the-windows-update-standalone-installer-in-win>

NEW QUESTION 140

- (Exam Topic 4)

You have a computer named Computer1 that runs Windows 10. Computer1 contains a registry key named Key1 that has the values shown in the exhibit. (Click the Exhibit tab.).



You have a Registration Entries (.reg) file named File1.reg that contains the following text.

```
Windows Registry Editor Version 5.00 [HKEY_LOCAL_MACHINE\SOFTWARE\Key1]
"String1"=
@="2"
```

You need to identify the effect of importing File1.reg to Computer1.

What should you identify? To answer, select the appropriate options in the answer area.

NOTE: Each correct selection is worth one point.

String1 will:

▼

be deleted

have a value of –

have a value of Word1

have no value

Value1 will:

▼

be deleted

have a value of 1

have a value of 2

have no value

- A. Mastered
- B. Not Mastered

Answer: A

Explanation:
Box 1: String1 will be deleted.
To delete a value, append equals and then minus to the value. For example: "String1"=Box 2: Value1 will have a value of 1
@="2" sets the default value to 1 but Value1 already has a DWORD value.
A DWORD (32-bit) value is a hexadecimal value. Value1 is 0x00000001 which is 1. References:
<https://www.computerhope.com/issues/ch000848.htm> <https://www.computerperformance.co.uk/vista/reg-create/>

NEW QUESTION 142

- (Exam Topic 4)
Your network contains an Active Directory domain named contoso.com. The domain contains two computers named Computer1 and Computer2 that run Windows 10.
On Computer1, you need to run the Invoke-Command cmdlet to execute several PowerShell commands on Computer2.
What should you do first?

- A. On Computer2, run the Enable-PSRemoting cmdlet
- B. From Active Directory, configure the Trusted for Delegation setting for the computer account of Computer2
- C. On Computer1, run the New-PSSession cmdlet
- D. On Computer2, add Computer1 to the Remote Management Users group

Answer: A

Explanation:
Reference:
<https://docs.microsoft.com/en-us/powershell/module/microsoft.powershell.core/enable-psremoting?view=power>

NEW QUESTION 144

- (Exam Topic 4)
Note: This question is part of a series of questions that present the same scenario. Each question in the series contains a unique solution that might meet the stated goals. Some question sets might have more than one correct solution, while others might not have a correct solution.
After you answer a question in this section, you will NOT be able to return to it. As a result, these questions will not appear in the review screen.
Your network contains an Active Directory domain named contoso.com. The domain contains the users shown in the following table.

Name	Member of
User2	Domain Users
User3	Domain Admins
User4	Server Operators

You have a computer named Computer1 that runs Windows 10 and is in a workgroup.
A local standard user on Computer1 named User1 joins the computer to the domain and uses the credentials of User2 when prompted.
You need to ensure that you can rename Computer1 as Computer33. Solution: You use the credentials of User1 on Computer1.
Does this meet the goal?

- A. Yes
- B. No

Answer: B

Explanation:
Renaming a domain-joined computer will also rename the computer account in the domain. To do this, you need domain administrator privileges.
User4 is a server operator, not an administrator. Members of the Server Operators group can sign in to a server interactively, create and delete network shared resources, start and stop services, back up and restore files, format the hard disk drive of the computer, and shut down the computer.
Use User3's credentials instead. References:
<https://docs.microsoft.com/en-us/windows/security/identity-protection/access-control/active-directory-security-g>

NEW QUESTION 148

- (Exam Topic 4)

Your company has a branch office that contains 25 workgroup computers. The computers run Windows 10 Pro.

Users report that they cannot see other computers from Network in File Explorer. What should you do to resolve the issue?

- A. Set Network profile to Private.
- B. Turn off random hardware addresses for the network connection.
- C. Set Network profile to Public.
- D. Configure the network connection as a metered connection.

Answer: A

NEW QUESTION 149

- (Exam Topic 4)

Your network contains an Active Directory domain. The domain contains a user named Admin1. All computers run Windows 10.

You enable Windows PowerShell remoting on the computers.

You need to ensure that Admin1 can establish remote PowerShell connections to the computers. The solution must use the principle of least privilege.

To which group should you add Admin1?

- A. Access Control Assistance Operators
- B. Power Users
- C. Remote Desktop Users
- D. Remote Management Users

Answer: D

Explanation:

References:

<https://4sysops.com/wiki/enable-powershell-remoting/>

NEW QUESTION 152

- (Exam Topic 4)

Note: This question is part of a series of questions that present the same scenario. Each question in the series contains a unique solution that might meet the stated goals. Some question sets might have more than one correct solution, while others might not have a correct solution.

After you answer a question in this section, you will NOT be able to return to it. As a result, these questions will not appear in the review screen.

You have a computer named Computer1 that runs Windows 10.

You test Windows updates on Computer1 before you make the updates available to other computers. You install a quality update that conflicts with a customer device driver.

You need to remove the update from Computer1.

Solution: From an elevated command prompt, you run the vmic qfe delete command. Does this meet the goal?

- A. Yes
- B. No

Answer: B

NEW QUESTION 156

- (Exam Topic 4)

Your network contains an Active Directory domain. The domain contains 1,000 computers that run Windows 10.

You configure Microsoft Edge settings by using domain and local Group Policy Objects (GPOs).

You need to generate a report that contains all the Microsoft Edge policy settings applied to a computer. What should you do?

- A. From PowerShell
- B. run the Gec-GPO cmdlet.
- C. From PowerShell
- D. run the Gec-GPOReport cmdlet.
- E. From Microsoft Edge, open edge://policy.
- F. From the Start menu, select Group Policy Object Editor

Answer: C

Explanation:

The Get-GPOReport cmdlet would generate a report for all domain group policy objects. However, this would not display the settings that are applied by local group policy objects.

To display the settings applied by both domain and local GPOs, you would have to open Microsoft Edge and enter edge://policy in the address bar.

NEW QUESTION 158

- (Exam Topic 4)

Please wait while the virtual machine loads. Once loaded, you may proceed to the lab section. This may take a few minutes, and the wait time will not be deducted from your overall test time.

When the Next button is available, click it to access the lab section. In this section, you will perform a set of tasks in a live environment. While most functionality will be available to you as it would be in a live environment, some functionality (e.g., copy and paste, ability to navigate to external websites) will not be possible by design.

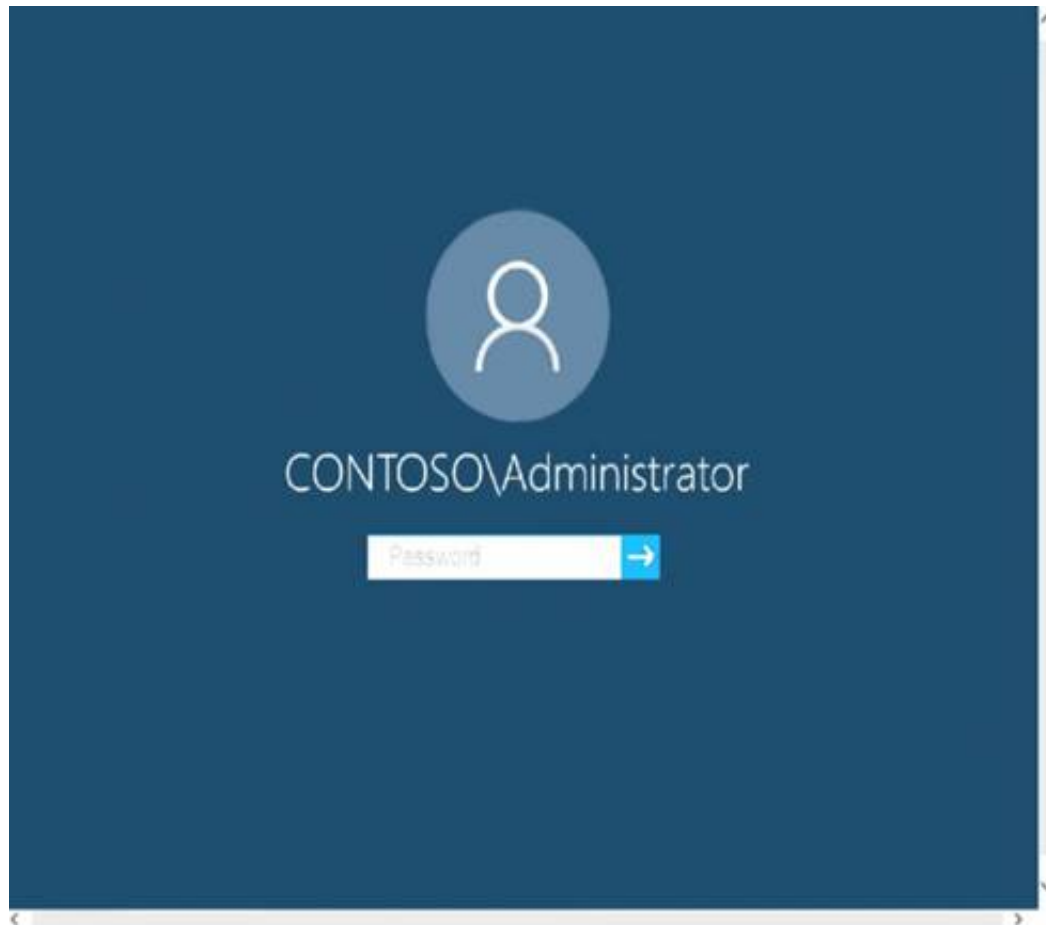
Scoring is based on the outcome of performing the tasks stated in the lab. In other words, it doesn't matter how you accomplish the task, if you successfully perform it, you will earn credit for that task.

Labs are not timed separately, and this exam may more than one lab that you must complete. You can use as much time as you would like to complete each lab.

But, you should manage your time appropriately to ensure that you are able to complete the lab(s) and all other sections of the exam in the time provided.

Please note that once you submit your work by clicking the Next button within a lab, you will NOT be able to return to the lab.

Username and password



Use the following login credentials as needed:

To enter your password, place your cursor in the Enter password box and click on the password below.

Username: Contoso/Administrator

Password: Passw0rd!

The following information is for technical support purposes only: Lab Instance: 11145882

Dashboard
Local Server
All Servers
AD DS
DNS
File and Storage Services >

WELCOME TO SERVER MANAGER

QUICK START

WHAT'S NEW

LEARN MORE

1 **Configure this local server**

- Add roles and features
- Add other servers to manage
- Create a server group
- Connect this server to cloud services

Hide

ROLES AND SERVER GROUPS

Roles: 3 | Server groups: 1 | Servers total: 1

AD DS 1

Manageability
Events
Services
Performance
BPA results

DNS 1

Manageability
Events
Services
Performance
BPA results

File and Storage Services 1

Manageability
Events
Services
Performance
BPA results

Local Server 1

Manageability
Events
2 Services
Performance
BPA results

1/23/2020 9:30 PM

All Servers 1

Manageability
Events
2 Services
Performance
BPA results

1/23/2020 9:30 PM

Tasks Computers



You need to ensure that the File History of Contoso\Administrator on Client1 is backed up automatically to \\DC1\Backups.

To complete this task, sign in to the required computer or computers.

- A. Mastered
- B. Not Mastered

Answer: A

Explanation:

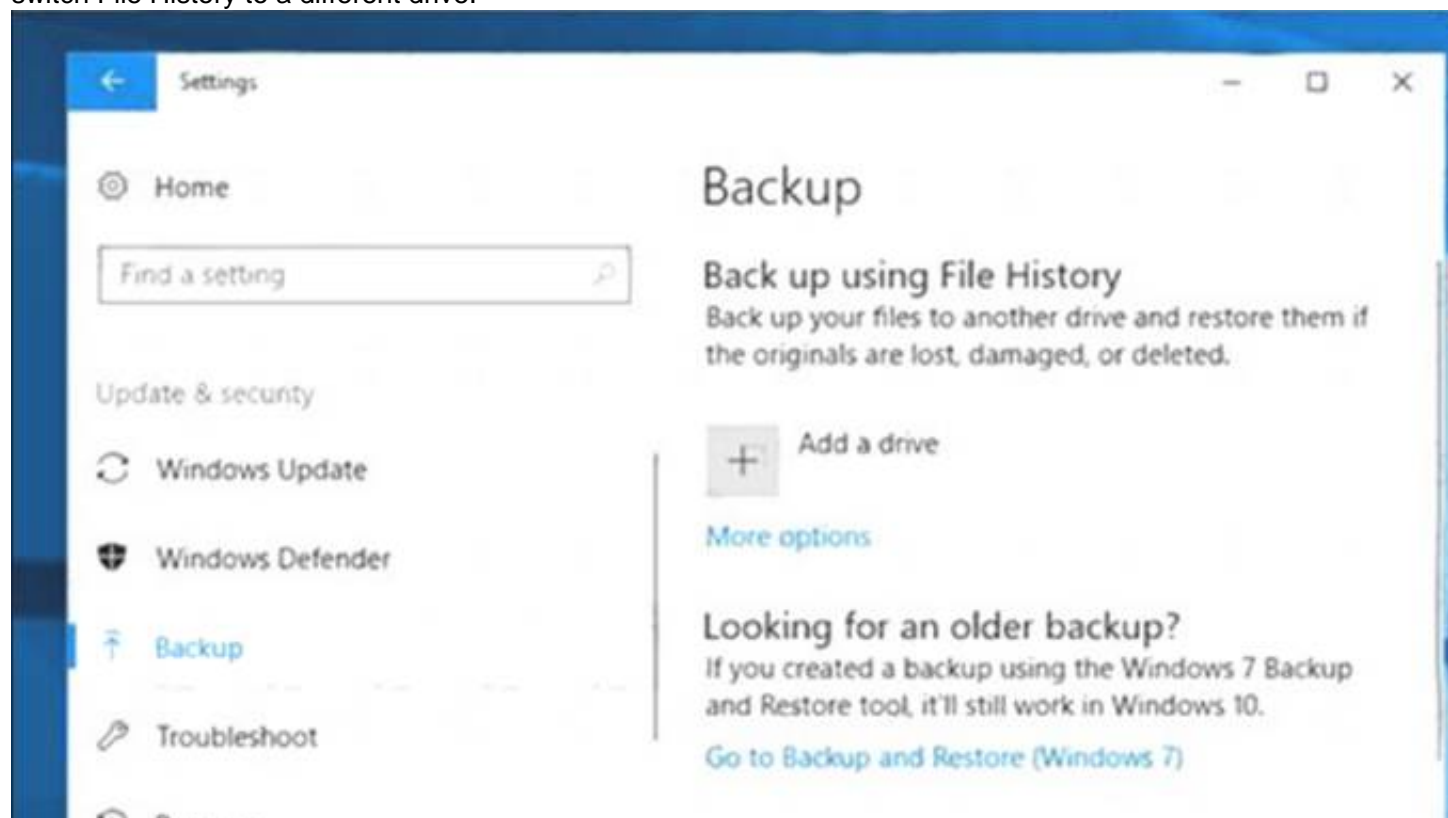
How to set up and enable File History

* 1. On Client1, go to Start > Settings > Update & Security.

* 2. Select Backup and click "Add a drive."

* 3. Select the drive or network location (\\DC1\Backups) you want to use for File History's backups.

Now click "More options." Here you can start a backup, change when your files are backed up, select how long to keep backed up files, add or exclude a folder, or switch File History to a different drive.



Click the "Back up now" button to start your first File History backup. Reference:

<https://lifehacker.com/how-to-back-up-your-computer-automatically-with-windows-1762867473>

NEW QUESTION 159

- (Exam Topic 4)

Your network contains an Active Directory domain. The domain contains 1,000 computers that run Windows 10.

You discover that when users are on their lock screen, they see a different background image every day, along with tips for using different features in Windows 10.

You need to disable the tips and the daily background image for all the Windows 10 computers. Which Group Policy settings should you modify?

- A. Turn off the Windows Welcome Experience
- B. Turn off Windows Spotlight on Settings
- C. Do not suggest third-party content in Windows spotlight
- D. Turn off all Windows spotlight features

Answer: D

Explanation:

References:

<https://docs.microsoft.com/en-us/windows/configuration/windows-spotlight>

NEW QUESTION 163

- (Exam Topic 4)

Your network contains an Active Directory domain named adatum.com. The domain contains the users shown in the following table.

Name	Member of
User1	Group1, Group3
User2	Group1, Group2
User3	Group2, Group3

The domain contains a computer named Computer1 that runs Windows10. Computer1 has a file named File1.txt that has the permissions shown in the exhibit.
(Click the Exhibit tab.)

Name: C:\Folder1\File1.txt

Owner: administrator (ADATUM\administrator) Change

Permissions

Share

Auditing

Effective Access

For additional information, double-click a permission entry. To modify a permission entry, select the entry and click Edit (if available).

Permission entries:

Type	Principal	Access	Condition
Allow	Domain Admins (...)	Full control	
Allow	Group1 (ADATUM\...)	Read	Member of each ({Group1 (ADATUM\Group1), Group3 (ADATUM\Group3)})
Allow	Group2 (ADATUM\...)	Full control	Not member of any ({Group3 (ADATUM\Group3)})
Allow	Group3 (ADATUM\...)	Read	Not member of any ({Group1 (ADATUM\Group1), Group2 (ADATUM\Group2)})

Add

Remove

View

Enable inheritance

OK

Cancel

Apply

For each of the following statements, select Yes if the statement is true. Otherwise, select No.
NOTE: Each correct selection is worth one point.

Statements	Yes	No
User1 can modify File1.txt.	<input type="radio"/>	<input type="radio"/>
User2 can modify File1.txt.	<input type="radio"/>	<input type="radio"/>
User3 can read File1.txt.	<input type="radio"/>	<input type="radio"/>

- A. Mastered
B. Not Mastered

Answer: A

Explanation:

Box 1: No

User1 only has Read access to the file. Box 2: Yes

User2 is in Group2 which has full control. The condition states that if the user is also a member of Group3, the permission would not apply. However, User2 is not in Group3 so the full control permission does apply.

Box 3: No

User3 is in Group3 which does have Read access. However, the condition states that if the user is also in Group1 or Group2 then the permission does not apply. User3 is in Group2 so the Read permission granted to Group3 does not apply to User3.

NEW QUESTION 166

- (Exam Topic 4)

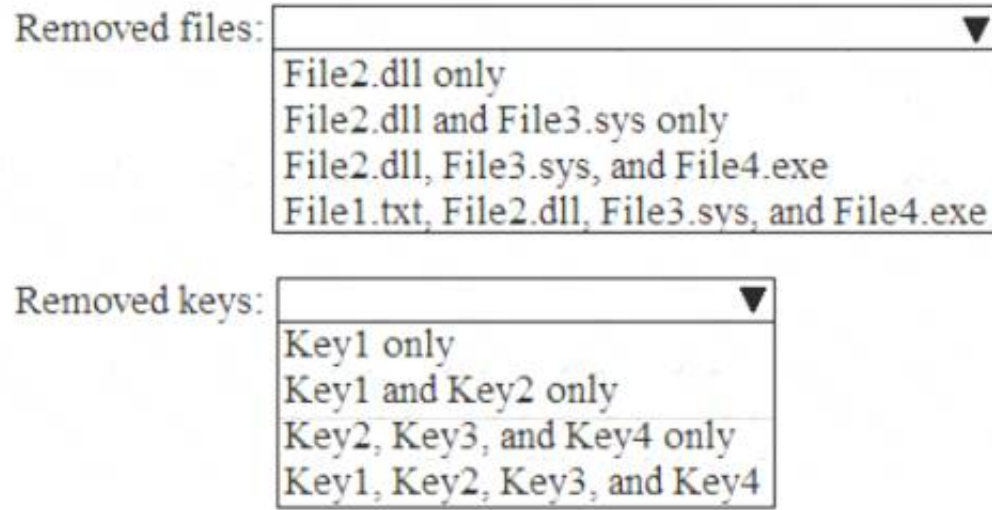
You have a computer named Computer 1 that runs Windows 10.

You turn on System Protection and create a restore point named Point1. You perform the following changes:

- Add four files named File1.txt, File2.dll, File3.sys, and File4.exe to the desktop. Run a configuration script that adds the following four registry keys:
- Key1 to HKEY_CURRENT_USER
 - Key2 to HKEY_CLASSES_ROOT
 - Key3 to HKEY_LOCAL_MACHINE\SYSTEM
 - Key4 to HKEY_CURRENT_CONFIG

You restore Point1.

Which files and registry keys are removed? To answer, select the appropriate options in the answer area. NOTE: Each correct selection is worth one point.



- A. Mastered
- B. Not Mastered

Answer: A

Explanation:

References:

<https://www.maketecheasier.com/what-system-restore-can-and-cannot-do-to-your-windows-system/> <https://superuser.com/questions/343112/what-does-windows-system-restore-exactly-back-up-and-restore>

NEW QUESTION 168

- (Exam Topic 4)

You have a workgroup computer named Computer1 that runs Windows 10. Computer1 contains five local user accounts. You need to ensure that all users who sign in to Computer1 see a picture named image1.jpg as the desktop background. What should you do?

- A. Desktop.jpg and copy the picture to the C:\Users\Default\Desktop folder
- B. From the Settings app, modify the Background settings.
- C. From the local Group Policy Editor, modify the Desktop settings.
- D. modify the Desktop settings.
- E. Rename Image1.jpg as Desktop.jpg and copy the picture to the C:\Windows\system32\ folder.

Answer: B

NEW QUESTION 172

- (Exam Topic 4)

Your network contains an Active Directory domain. The domain contains a computer named Computer1 that runs Windows 10. You need to be able to reset computer accounts from Computer1. What should you do first?

- A. From Windows Defender Firewall, allow Windows Remote Management
- B. Add the RSAT: Active Directory Domain Services and Lightweight Directory Services Tools optional feature.
- C. From Windows Defender Firewall, allow Remote Service Management
- D. Add the RSAT: Server Manager optional feature.

Answer: B

NEW QUESTION 176

- (Exam Topic 4)

You have a computer named Computer1 that runs Windows 10. Computer1 has a folder named C:\Folder1.

You need to meet the following requirements:

- Provide a user named Jon Ross with the ability to modify the permissions of C:\Folder1.
- Ensure that the principle of least privilege is maintained.

What should you do?

To complete this task, sign in to the required computer or computers.

- A. Mastered
- B. Not Mastered

Answer: A

Explanation:

- In Windows Explorer, right-click the C:\Folder1 folder, and then click Properties.
- Click on the Security tab, and then click Edit.
- In the Permissions dialog box, add Jon Ross.
- Specify the Allow Modify permissions for the Jon Ross.
- Click OK twice to close the Security dialog box.
- Click OK twice to close the Properties dialog box.

Reference:

https://docs.microsoft.com/en-us/iis/web-hosting/configuring-servers-in-the-windows-web-platform/configuring

NEW QUESTION 179

- (Exam Topic 4)

Note: This question is part of a series of questions that present the same scenario. Each question in the series contains a unique solution that might meet the stated goals. Some question sets might have more than one correct solution, while others might not have a correct solution.

After you answer a question in this section, you will NOT be able to return to it. As a result, these questions will not appear in the review screen.

You manage devices that run Windows 10.

Ten sales users will travel to a location that has limited bandwidth that is expensive. The sales users will be at the location for three weeks.

You need to prevent all Windows updates from downloading for the duration of the trip. The solution must not prevent access to email and the Internet.

Solution: From Network & Internet in the Settings app, you set a data limit. Does this meet the goal?

- A. Yes
- B. No

Answer: B

NEW QUESTION 184

- (Exam Topic 4)

Your network contains an Active Directory domain named adatum.com that uses Key Management Service (KMS) for activation.

You deploy a computer that runs Windows 10 to the domain. The computer fails to activate.

You suspect that the activation server has an issue. You need to identify which server hosts KMS.

How should you complete the command? To answer, select the appropriate options in the answer area.

NOTE: Each correct selection is worth one point.

Get-Host
nslookup.exe
slmgr.vbs

-Type

A
SOA
SRV
WKS

_vlmcs._tcp.Adatum.com

- A. Mastered
- B. Not Mastered

Answer: A

Explanation:

References:

https://blogs.technet.microsoft.com/odsupport/2011/11/14/how-to-discover-office-and-windows-kms-hosts-via-d

NEW QUESTION 189

- (Exam Topic 4)

You have 15 computers that run Windows 10. Each computer has two network interfaces named Interface1 and Interface2.

You need to ensure that network traffic uses Interface1, unless Interface1 is unavailable. What should you do?

- A. Run the Set-NetIPInterface –InterfaceAlias Interface1 –InterfaceMetric 1 command.
- B. Run the Set-NetAdapterBinding –Name Interface2 –Enabled \$true –ComponentID ms_tcpip – ThrottleLimit 0 command.
- C. Set a static IP address on Interface 1.
- D. From Network Connections in Control Pane, modify the Provider Order.

Answer: A

Explanation:

References:

https://tradingtechnologies.atlassian.net/wiki/spaces/KB/pages/27439127/How+to+Change+Network+Adapter+ https://docs.microsoft.com/en-us/powershell/module/nettcpip/set-netipinterface?view=win10-ps

NEW QUESTION 192

- (Exam Topic 4)

You have 20 computers that run Windows 11.

You need to enable Windows Sandbox on the computers.

How should you complete the command? To answer, select the appropriate options in the answer area. NOTE: Each correct selection is worth one point.

Answer Area

Add-AppxPackage
Add-WindowsCapability
Add-WindowsPackage
Enable-WindowsOptionalFeature

-FeatureName

"Containers-DisposableClientVM"
"HostGuardian"
"HypervisorPlatform"
"VirtualMachinePlatform"

-All -Online

- A. Mastered
- B. Not Mastered

Answer: A

Explanation:

Box 1: Enable-WindowsOptionalFeature
To Enable Windows 10 Sandbox with PowerShell,
* 1. Open PowerShell as Administrator.
* 2. Type or copy-paste the following command:
Enable-WindowsOptionalFeature -FeatureName "Containers-DisposableClientVM" -All -Online
* 3. When prompted to restart the computer, type Y, and press Enter.
* 4. The change can be undone with the following command:
* 5. Disable-WindowsOptionalFeature -FeatureName "Containers-DisposableClientVM" -Online
Box 2: "Containers-DisposableClientVM"
<https://learn.microsoft.com/en-us/windows/security/threat-protection/windows-sandbox/windows-sandbox-over>

NEW QUESTION 196

- (Exam Topic 4)
You have a computer named Client1 that runs Windows 11. You perform the following actions on Client1:
• Enable Hyper-V.
• Create a virtual machine that runs Windows 11 Pro.
You need to connect to VM1 by using enhanced session mode. What should you do first?

- A. Enable Remote Assistance on Client1.
- B. Enable Remote Assistance on VM1.
- C. Enable Remote Desktop on VM1.
- D. Enable Remote Desktop on Client1.

Answer: B

NEW QUESTION 197

- (Exam Topic 4)
Note: This question is part of a series of questions that present the same scenario. Each question in the series contains a unique solution that might meet the stated goals. Some question sets might have more than one correct solution, while others might not have a correct solution.
After you answer a question in this section, you will NOT be able to return to it. As a result, these questions will not appear in the review screen.
A user named User2 has a computer named Computer2 that runs Windows 10. User2 joins Computer2 to contoso.com by using user2@contoso.com.
Computer1 contains a folder named Folder1. Folder1 is in drive C and is shared as Share1. Share1 has the permission shown in the following table.

Group	Share permission
Everyone	Full control
AzureAD\user1@contoso.com	Owner

A user named User2 has a computer named Computer2 that runs Windows 10. User2 joins Computer2 to contoso.com by using user2@contoso.com.
User2 attempts to access Share1 and receives the following error message: "The username or password is incorrect."
You need to ensure that User2 can connect to Share1.
Solution: You create a local user account on Computer1 and instruct User2 to use the local account to connect to Share1.
Does this meet the goal?

- A. Yes
- B. No

Answer: B

NEW QUESTION 199

- (Exam Topic 4)
Note: This question is part of a series of questions that present the same scenario. Each question in the series contains a unique solution that might meet the stated goals. Some question sets might have more than one correct solution, while others might not have a correct solution.
After you answer a question in this section, you will NOT be able to return to it. As a result, these questions will not appear in the review screen.
You have a laptop named Computer1 that runs Windows 10.
When in range, Computer1 connects automatically to a Wi-Fi network named Wireless1. You need to prevent Computer1 from automatically connecting to Wireless1.
Solution: From the Services console, you disable the Link-Layer Topology Discovery Mapper service. Does this meet the goal?

- A. Yes
- B. No

Answer: B

NEW QUESTION 201

- (Exam Topic 4)
You have a workgroup computer named Computer1 that runs Windows 10. Computer1 has the user accounts shown in the following table.

Name	Member of
User1	Users
User2	Guests
User3	Users, Administrators
User4	Users, Guests
Administrator	Administrators

User3, User4, and Administrator sign in and sign out on Computer1. User1 and User2 have never signed in to Computer1. You are troubleshooting policy issues on Computer1. You sign in to Computer1 as Administrator. You add the Resultant Set of Policy (RsoP) snap-in to an MMC console. Which users will be able to sign in on Computer1?

- A. User1, User3, and User4 only
- B. Administrator only
- C. Use1, User2, User3, User4, and Administrator
- D. User3, User4, and Administrator only

Answer: D

Explanation:

The Interactive logon: Number of previous logons to cache (in case domain controller is not available) policy setting determines whether a user can log on to a Windows domain by using cached account information. Logon information for domain accounts can be cached locally so that, if a domain controller cannot be contacted on subsequent logons, a user can still log on.

References:

<https://docs.microsoft.com/en-us/windows/security/threat-protection/security-policy-settings/interactive-logon-n>

NEW QUESTION 206

- (Exam Topic 4)

You have several computers that run Windows 10.

All users have Microsoft OneDrive for Business installed. Users frequently save files to their desktop.

You need to ensure that all the users can recover the files on their desktop from OneDrive for Business. Which two actions should you perform? Each correct answer presents part of the solution.

NOTE: Each correct selection is worth one point.

- A. Copy ADMX and ADML files to C:\Users\Public\Desktop\
- B. From Backup in the Settings app, add a drive
- C. Configure the Silently move Windows known folders to OneDrive settings
- D. Copy ADMX and ADML files to C:\Windows\PolicyDefinitions
- E. Configure the Save documents to OneDrive by default setting

Answer: CD

Explanation:

References:

<https://docs.microsoft.com/en-us/onedrive/plan-onedrive-enterprise> <https://docs.microsoft.com/en-us/onedrive/use-group-policy#KFMOptInNoWizard>

NEW QUESTION 211

- (Exam Topic 4)

You need to create a virtual machines shown in the following table:

Name	Operating system	Requirement
VM1	64-bit version of Windows 8.1 Pro	Start from a floppy disk.
VM2	32-bit version of Windows 10 Pro	Start from the network.
VM3	64-bit version of Windows 10 Pro	Start from an SCSI VHD.

Which generations should you use for each virtual machine? To answer, select the appropriate options in the answer area. NOTE: Each correct selection is worth one point.

VM1:

VM2:

VM3:

- A. Mastered
- B. Not Mastered

Answer: A

Explanation:

Graphical user interface, text, application Description automatically generated

NEW QUESTION 214

- (Exam Topic 4)

Note: This question is part of a series of questions that present the same scenario. Each question in the series contains a unique solution that might meet the stated goals. Some question sets might have more than one correct solution, while others might not have a correct solution.

After you answer a question in this section, you will NOT be able to return to it. As a result, these questions will not appear in the review screen.

You have a laptop named Computer1 that runs Windows 10.

When in range, Computer1 connects automatically to a Wi-Fi network named Wireless1. You need to prevent Computer1 from automatically connecting to Wireless1.

Solution: From a command prompt, you run netsh wlan delete profile name="Wireless1". Does this meet the goal?

- A. Yes
- B. No

Answer: A

Explanation:

Reference:

<https://lifehacker.com/remove-wi-fi-profiles-from-windows-8-1-from-the-command-1449954864>

NEW QUESTION 217

- (Exam Topic 4)

Please wait while the virtual machine loads. Once loaded, you may proceed to the lab section. This may take a few minutes, and the wait time will not be deducted from your overall test time.

When the Next button is available, click it to access the lab section. In this section, you will perform a set of tasks in a live environment. While most functionality will be available to you as it would be in a live environment, some functionality (e.g., copy and paste, ability to navigate to external websites) will not be possible by design.

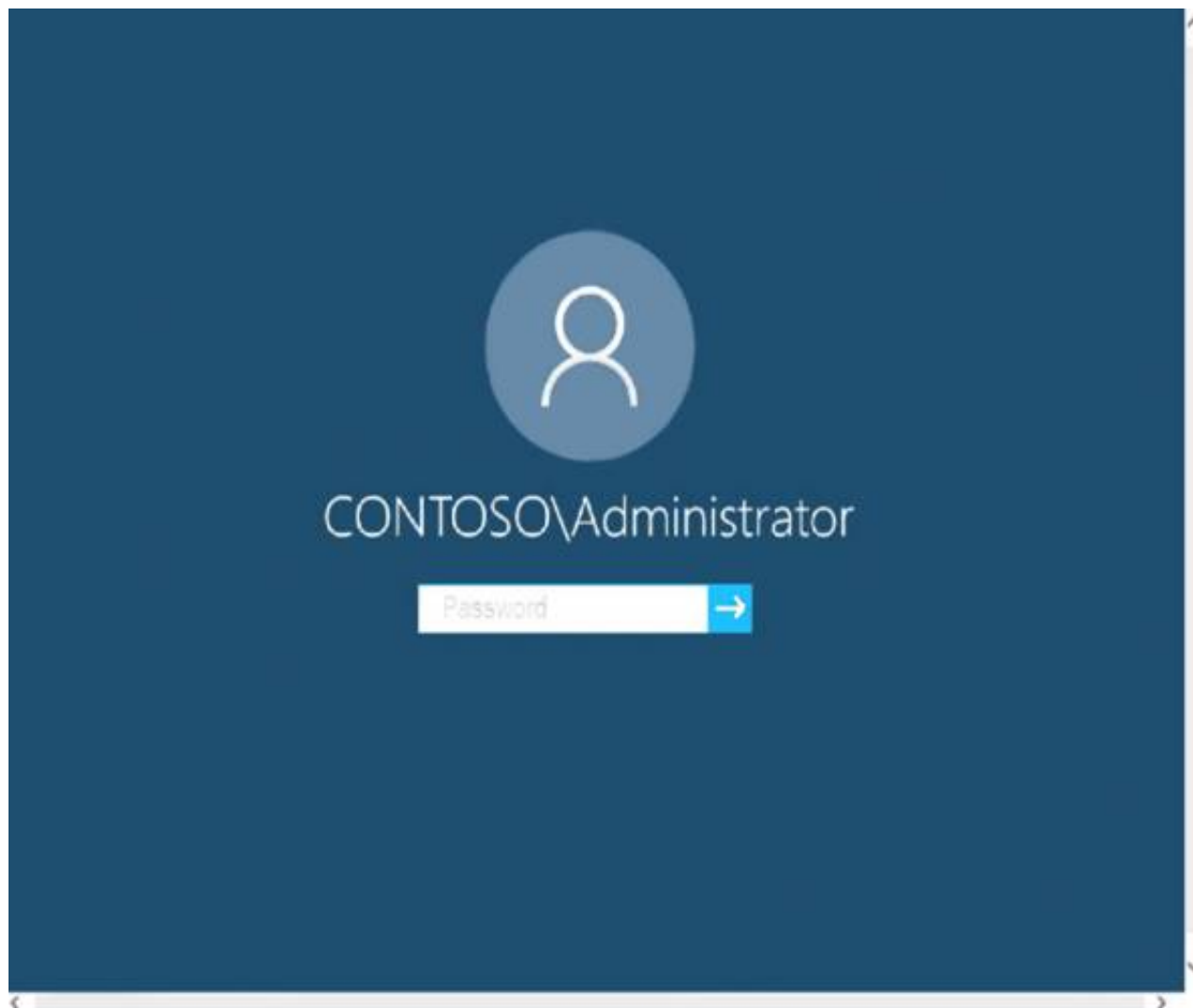
Scoring is based on the outcome of performing the tasks stated in the lab. In other words, it doesn't matter how you accomplish the task, if you successfully perform it, you will earn credit for that task.

Labs are not timed separately, and this exam may more than one lab that you must complete. You can use as much time as you would like to complete each lab.

But, you should manage your time appropriately to ensure that you are able to complete the lab(s) and all other sections of the exam in the time provided.

Please note that once you submit your work by clicking the Next button within a lab, you will NOT be able to return to the lab.

Username and password



Use the following login credentials as needed:

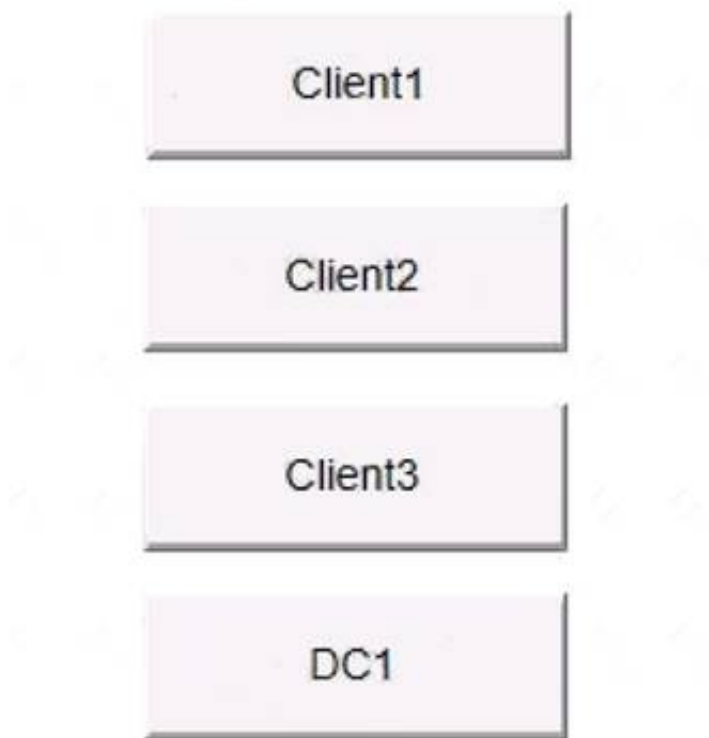
To enter your password, place your cursor in the Enter password box and click on the password below.

Username: Contoso/Administrator

Password: Passw0rd!

The following information is for technical support purposes only:

Lab Instance: 10921597



You need to connect to your company's network and create a VPN connection on Client2 named VPN1 that meets the following requirements:
 VPN1 must connect to a server named vpn.contoso.com.

Only traffic to your company's network must be routed through VPN1. To complete this task, sign in to the required computer or computers.

- A. Mastered
- B. Not Mastered

Answer: A

Explanation:

- On Client2, click on the Start button and go to settings.
- Select Network & Internet.
- Select VPN on the left-hand side
- Click on the Add a VPN connection button.
- Next, select the VPN provider—This will almost always be Windows (built-in).
- Name your connection and enter the server name as provided by your IT technician. (VPN1 and vpn.contoso.com).

- Add in your username and password as provided by your IT technician.
- Click Save when done.
- Closeout the PC settings windows.

Reference:

<https://www.themillergroup.com/vpn-windows-10/>

NEW QUESTION 219

- (Exam Topic 4)

Your company has an isolated network used for testing. The network contains 20 computers that run Windows 10. The computers are in a workgroup. During testing, the computers must remain in the workgroup.

You discover that none of the computers are activated.

You need to recommend a solution to activate the computers without connecting the network to the Internet. What should you include in the recommendation?

- A. Volume Activation Management Tool (VAMT)
- B. Key Management Service (KMS)
- C. Active Directory-based activation
- D. the Get-WindowsDeveloperLicense cmdlet

Answer: B

Explanation:

<https://docs.microsoft.com/en-us/windows/deployment/volume-activation/introduction-vamt>

NEW QUESTION 224

- (Exam Topic 4)

You have a computer that runs Windows 10. You need to identify the following information:

- The name, username, and SID of the computer
- The user groups to which your user account belongs Which command should you run?

- A. whoami
- B. query
- C. msinfo32
- D. userinit

Answer: A

NEW QUESTION 229

- (Exam Topic 4)

You have a computer that runs Windows 10.

You need to view the Windows Update diagnostic log. What should you do first?

- A. From File Explorer, go to the C:\Windows\Logs\WindowsUpdate folder and select Show hidden files, folders, and drives.
- B. From Windows Update in the Settings app
- C. configure Advanced options.
- D. From Event Viewer, modify the properties of the WindowsUpdateClient operational log.
- E. From Windows PowerShell, run the Get-WindowsUpdateLog cmdlet.

Answer: D

Explanation:

Reference:

<https://docs.microsoft.com/en-us/powershell/module/windowsupdate/get-windowsupdatelog?view=windowsserv>

NEW QUESTION 234

- (Exam Topic 4)

You have a computer that runs Windows 10. You need to clear the DNS client cache. Which command should you run?

- A. ipconfig.exe
- B. arp.exe
- C. nslookup.exe
- D. netstat.exe

Answer: A

NEW QUESTION 238

- (Exam Topic 4)

You have a Microsoft Azure Active Directory (Azure AD) tenant named contoso.com that contain the users shown in the following table.

Name	Role
Admin1@contoso.com	Security administrator
Admin2@contoso.com	Cloud device administrator
User1@contoso.com	None

You have a computer named Computer1 that runs Windows 10.

Name	Member of
Admin1	Network Configuration Operators
Admin2	Power Users
User1	Administrator

User1 joins Computer1 to Azure AD by using user1@contoso.com.

For each of the following statements, select Yes if the statement is true. Otherwise, select No. NOTE: Each correct selection is worth one point.

Statements	Yes	No
User1@contoso.com is a member of the local Administrators group on Computer1.	<input type="radio"/>	<input type="radio"/>
Admin1@contoso.com can configure the firewall and Windows Defender on Computer1.	<input type="radio"/>	<input type="radio"/>
Admin2@contoso.com can install software on Computer1.	<input type="radio"/>	<input type="radio"/>

- A. Mastered
- B. Not Mastered

Answer: A

Explanation:

Statements	Yes	No
User1@contoso.com is a member of the local Administrators group on Computer1.	<input checked="" type="radio"/>	<input type="radio"/>
Admin1@contoso.com can configure the firewall and Windows Defender on Computer1.	<input type="radio"/>	<input checked="" type="radio"/>
Admin2@contoso.com can install software on Computer1.	<input checked="" type="radio"/>	<input type="radio"/>

NEW QUESTION 241

- (Exam Topic 4)

Your network contains an Active Directory domain. The domain contains the users shown in the following table.

Name	Member of
User1	Group1
User2	Group2

You have a server named Server1 that runs Windows Server 2019 and has the Windows Deployment Services role installed. Server1 contains an x86 boot image and three Windows 10 install images. The install images are shown in the following table.

Name	Architecture	User permission
Image1	x64	Full control: Administrators, WDSServer
Image2	x64	Full control: Administrators Read: Group1
Image3	x86	Full control: Administrators, WDSServer Read: Group2

You purchase a computer named Computer1 that is compatible with the 64-bit version of Windows 10.

For each of the following statements, select Yes if the statement is true. Otherwise, select No.

NOTE: Each correct selection is worth one point.

Answer Area

Statements	Yes	No
User1 can install Image1 on Computer1 by using Windows Deployment Services (WDS)	<input type="radio"/>	<input type="radio"/>
User1 can install Image2 on Computer1 by using Windows Deployment Services (WDS)	<input type="radio"/>	<input type="radio"/>
User2 can install Image3 on Computer1 by using Windows Deployment Services (WDS)	<input type="radio"/>	<input type="radio"/>

- A. Mastered
- B. Not Mastered

Answer: A

Explanation:

Graphical user interface, text, application Description automatically generated
Reference:
<https://techdirectarchive.com/2020/09/14/error-0xc1510111-you-do-not-have-permissions-to-mount-and-modify>

NEW QUESTION 244

- (Exam Topic 4)
You have a computer named Computer1 that runs Windows 10.
You need to configure User Account Control (UAC) to prompt administrators for their credentials. Which settings should you modify?

- A. Administrators Properties in Local Users and Groups
- B. User Account Control Settings in Control Panel
- C. Security Options in Local Group Policy Editor
- D. User Rights Assignment in Local Group Policy Editor

Answer: D

Explanation:

References:
<https://docs.microsoft.com/en-us/windows/security/identity-protection/user-account-control/user-account-contro>

NEW QUESTION 248

- (Exam Topic 4)
You deploy Windows 10 to a computer named Computer1.
Computer1 contains a folder named Folder1 contains multiple documents.
You need to ensure that you can recover the files in Folder1 by using the Previous Versions tab.
What are three possible ways to achieve the goal? Each correct answer presents a complete the solution. NOTE: Each correct selection is worth one point.

- A. Enable File History and include Folder1 in the Documents library.
- B. Enable File History and add Folder1 to File History.
- C. Select Folder is ready for archiving from the properties of Folder1.
- D. Select Allow files in this folder to have contents indexed in addition to file properties from the properties of Folder1.
- E. Set up Backup and Restore (Windows 7) and include Folder1 in the backup.

Answer: ABE

NEW QUESTION 251

- (Exam Topic 4)
You enable Windows PowerShell remoting on a computer that runs Windows 10. You need to limit which PowerShell cmdlets can be used in a remote session.
Which three actions should you perform in sequence? To answer, move the appropriate actions from the list of actions to the answer area and arrange them in the correct order.

Actions

Run the New-PSSession cmdlet.

Create a PS1 file that contains a list of the cmdlets.

Run the New-PSSessionConfigurationFile cmdlet.

Create a PSSC file that contains a list of the cmdlets.

Run the Register-PSSessionConfiguration cmdlets.

Run the Enter-PSSession cmdlet.

Answer Area

- A. Mastered
- B. Not Mastered

Answer: A

Explanation:

* 1. New
* 2. Register
* 3. Enter Read more:
<https://devblogs.microsoft.com/scripting/build-constrained-powershell-endpoint-using-configuration-file/>

NEW QUESTION 253

- (Exam Topic 4)

You have a computer that runs Windows 10. The computer is in a workgroup. The computer is used to provide visitors with access to the Internet.

You need to configure the computer to meet the following requirements:

- > Always sign in automatically as User1.
- > Start an application named App1.exe at sign-in.

What should you use to meet each requirement? To answer, select the appropriate options in the answer area. NOTE: Each correct selection is worth one point.

Always sign in automatically as User1:

	▼
Group Policy preferences	
BCDEdit	
Registry Editor	
MSConfig	

Start an application named App1.exe at sign-in:

	▼
Group Policy preferences	
BCDEdit	
Registry Editor	
MSConfig	

- A. Mastered
- B. Not Mastered

Answer: A

Explanation:

References:

<http://www.itexpertmag.com/server/complete-manageability-at-no-extra-cost>

NEW QUESTION 254

.....

Thank You for Trying Our Product

We offer two products:

1st - We have Practice Tests Software with Actual Exam Questions

2nd - Questions and Answers in PDF Format

MD-100 Practice Exam Features:

- * MD-100 Questions and Answers Updated Frequently
- * MD-100 Practice Questions Verified by Expert Senior Certified Staff
- * MD-100 Most Realistic Questions that Guarantee you a Pass on Your First Try
- * MD-100 Practice Test Questions in Multiple Choice Formats and Updates for 1 Year

100% Actual & Verified — Instant Download, Please Click
[Order The MD-100 Practice Test Here](#)