

Exam Questions NSE7_SDW-7.0

Fortinet NSE 7 - SD-WAN 7.0

https://www.2passeasy.com/dumps/NSE7_SDW-7.0/



NEW QUESTION 1

Refer to the exhibits.

Exhibit A

```
config duplication
edit 1
set srcaddr "10.0.1.0/24"
set dstaddr "10.1.0.0/24"
set srcintf "port5"
set dstintf "overlay"
set service "ALL"
set packet-duplication force
next
end

branch1_fgt # diagnose sys sdwan zone
Zone SASE index=2
members(0):
Zone overlay index=4
members(3): 19(T_INET_0_0) 20(T_INET_1_0) 21(T_MPLS_0)
Zone underlay index=3
members(2): 3(port1) 4(port2)
Zone virtual-wan-link index=1
members(0):

1.274665 port5 in 10.0.1.101 -> 10.1.0.7: icmp: echo request
1.275788 T_INET_0_0 out 10.0.1.101 -> 10.1.0.7: icmp: echo request
1.275790 T_INET_1_0 out 10.0.1.101 -> 10.1.0.7: icmp: echo request
1.275801 T_MPLS_0 out 10.0.1.101 -> 10.1.0.7: icmp: echo request
1.278365 T_INET_1_0 in 10.1.0.7 -> 10.0.1.101: icmp: echo reply
1.278553 port5 out 10.1.0.7 -> 10.0.1.101: icmp: echo reply
```

Exhibit B

```
3.874431 T_INET_1_0 in 10.0.1.101 -> 10.1.0.7: icmp: echo request
3.874630 port5 out 10.0.1.101 -> 10.1.0.7: icmp: echo request
3.874895 T_INET_0_0 in 10.0.1.101 -> 10.1.0.7: icmp: echo request
3.875125 T_MPLS_0 in 10.0.1.101 -> 10.1.0.7: icmp: echo request
3.875054 port5 in 10.1.0.7 -> 10.0.1.101: icmp: echo reply
3.875308 T_INET_1_0 out 10.1.0.7 -> 10.0.1.101: icmp: echo reply
```

Exhibit A shows the packet duplication rule configuration, the SD-WAN zone status output, and the sniffer output on FortiGate acting as the sender. Exhibit B shows the sniffer output on a FortiGate acting as the receiver.

The administrator configured packet duplication on both FortiGate devices. The sniffer output on the sender FortiGate shows that FortiGate forwards an ICMP echo request packet over three overlays, but it only receives one reply packet through T_INET_1_0.

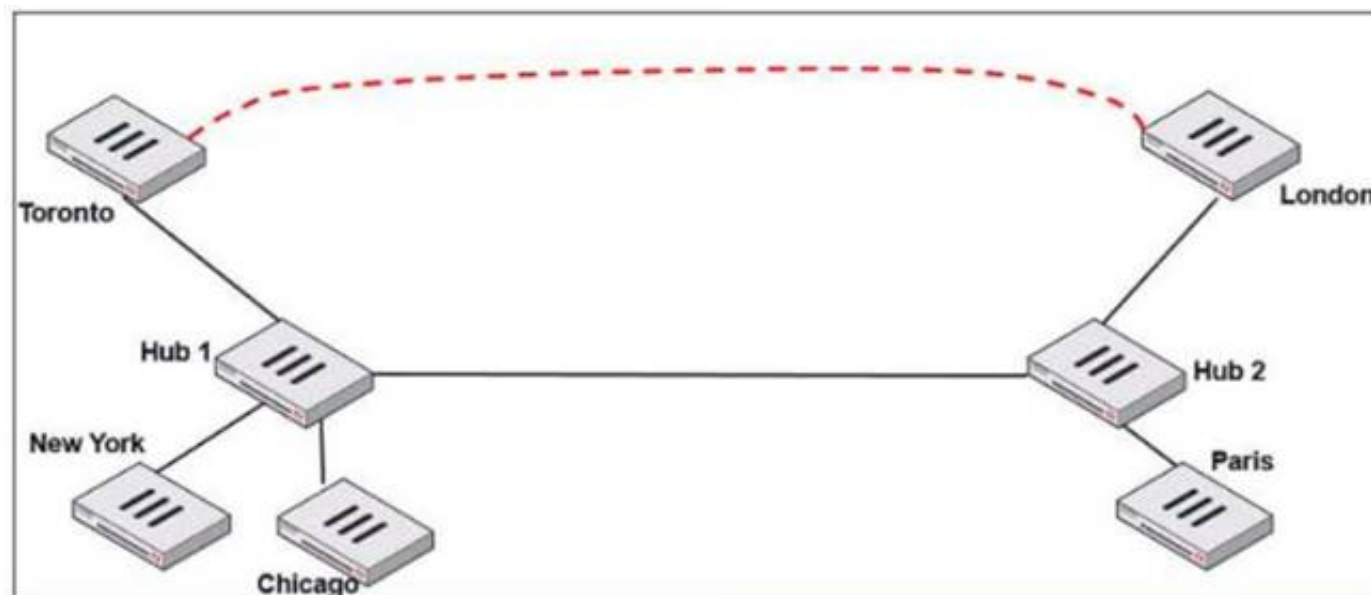
Based on the output shown in the exhibits, which two reasons can cause the observed behavior? (Choose two.)

- A. On the receiver FortiGate, packet-de-duplication is enabled.
- B. The ICMP echo request packets sent over T_INET_0_0 and T_MPLS_0 were dropped along the way.
- C. The ICMP echo request packets received over T_INET_0_0 and T_MPLS_0 were offloaded to NPU.
- D. On the sender FortiGate, duplication-max-num is set to 3.

Answer: AD

NEW QUESTION 2

Refer to the exhibit.



Two hub-and-spoke groups are connected through a site-to-site IPsec VPN between Hub 1 and Hub 2. Which two configuration settings are required for Toronto and London spokes to establish an ADVPN shortcut? (Choose two.)

- A. On the hubs, auto-discovery-sender must be enabled on the IPsec VPNs to spokes.
- B. On the spokes, auto-discovery-receiver must be enabled on the IPsec VPN to the hub.
- C. auto-discovery-forwarder must be enabled on all IPsec VPNs.
- D. On the hubs, net-device must be enabled on all IPsec VPNs.

Answer: AB

NEW QUESTION 3

Which two statements describe how IPsec phase 1 main mode is different from aggressive mode when performing IKE negotiation? (Choose two)

- A. A peer ID is included in the first packet from the initiator, along with suggested security policies.
- B. XAuth is enabled as an additional level of authentication, which requires a username and password.
- C. A total of six packets are exchanged between an initiator and a responder instead of three packets.
- D. The use of Diffie Hellman keys is limited by the responder and needs initiator acceptance.

Answer: BC

NEW QUESTION 4

Refer to the exhibit.

```
ike 0:T_INET_0_0:214: received informational request
ike 0:T_INET_0_0:214: processing notify type SHORTCUT_QUERY
ike 0:T_INET_0_0: recv shortcut-query 9065761962601467474
07409008f7fbd17e/0000000000000000 192.2.0.1 10.0.1.101->10.0.2.101 psk 64 ppk 0 ttl 32
nat 0 ver 2 mode 0
ike 0:T_INET_0: iif 20 10.0.1.101->10.0.2.101 route lookup oif 20 T_INET_0 gwy
10.201.1.1
ike 0:T_INET_0_1: forward shortcut-query 9065761962601467474
07409008f7fbd17e/0000000000000000 192.2.0.1 10.0.1.101->10.0.2.101 psk 64 ppk 0 ttl 31
ver 2 mode 0, ext-mapping 192.2.0.1:500
```

Which statement about the role of the ADVPN device in handling traffic is true?

- A. This is a spoke that has received a query from a remote hub and has forwarded the response to its hub.
- B. Two hubs, 10.0.1.101 and 10.0.2.101, are receiving and forwarding queries between each other.
- C. This is a hub that has received a query from a spoke and has forwarded it to another spoke.
- D. Two spokes, 192.2.0.1 and 10.0.2.101, forward their queries to their hubs.

Answer: C

NEW QUESTION 5

In the default SD-WAN minimum configuration, which two statements are correct when traffic matches the default implicit SD-WAN rule? (Choose two)

- A. Traffic has matched none of the FortiGate policy routes.
- B. Matched traffic failed RPF and was caught by the rule.
- C. The FIB lookup resolved interface was the SD-WAN interface.
- D. An absolute SD-WAN rule was defined and matched traffic.

Answer: AC

NEW QUESTION 6

Refer to the exhibit.

```
branch1_fgt # diagnose sys sdwan service 3

Service(3): Address Mode(IPV4) flags=0x200 use-shortcut-sla
Gen(2), TOS(0x0/0x0), Protocol(0: 1->65535), Mode(priority), link-cost-factor(packet-
loss), link-cost-threshold(0), health-check(VPN_PING)
Members(3):
  1: Seq_num(3 T_INET_0_0), alive, packet loss: 2.000%, selected
  2: Seq_num(4 T_MPLS_0), alive, packet loss: 4.000%, selected
  3: Seq_num(5 T_INET_1_0), alive, packet loss: 12.000%, selected
Src address(1):
  10.0.1.0-10.0.1.255

Dst address(1):
  10.0.0.0-10.255.255.255

branch1_fgt (3) # show
config service
edit 3
  set name "Corp"
  set mode priority
  set dst "Corp-net"
  set src "LAN-net"
  set health-check "VPN_PING"
  set link-cost-factor packet-loss
  set link-cost-threshold 0
  set priority-members 5 3 4
next
end
```

The exhibit shows the SD-WAN rule status and configuration.

Based on the exhibit, which change in the measured packet loss will make T_INET_1_0 the new preferred member?

- A. When all three members have the same packet loss.
- B. When T_INET_0_0 has 4% packet loss.
- C. When T_INET_0_0 has 12% packet loss.
- D. When T_INET_1_0 has 4% packet loss.

Answer: A

NEW QUESTION 7

Which two statements are correct when traffic matches the implicit SD-WAN rule? (Choose two.)

- A. The sdwan_service_id flag in the session information is 0.
- B. All SD-WAN rules have the default setting enabled.
- C. Traffic does not match any of the entries in the policy route table.
- D. Traffic is load balanced using the algorithm set for the v4-ecmp-mode setting.

Answer: AC

Explanation:

sdwan_service_id is 0 = match SD-WAN implicit rule, study guide 7.0 page 120, 7.2 page 149 SD-WAN rules internally are interpreted as a Policy route, so when the traffic doesn't match with any policy route, it will be flowing by implicit policy.

NEW QUESTION 8

Which two settings can you configure to speed up routing convergence in BGP? (Choose two.)

- A. update-source
- B. set-route-tag
- C. holdtime-timer
- D. link-down-failover

Answer: CD

NEW QUESTION 9

What are two common use cases for remote internet access (RIA)? (Choose two.)

- A. Provide direct internet access on spokes
- B. Provide internet access through the hub
- C. Centralize security inspection on the hub
- D. Provide thorough inspection on spokes

Answer: BC

NEW QUESTION 10

Which components make up the secure SD-WAN solution?

- A. Application, antivirus, and URL, and SSL inspection
- B. Datacenter, branch offices, and public cloud

C. FortiGate, FortiManager, FortiAnalyzer, and FortiDeploy
D. Telephone, ISDN, and telecom network.

Answer: C

NEW QUESTION 10

Refer to the exhibits.

Exhibit A

| | |
|-------------------------|---|
| Network Properties | |
| Service | Critical-DIA |
| Identity | |
| Device ID | FGVM01TM22000077 |
| Device Name | branch1_fgt |
| Type | |
| Sub Type | sdwan |
| Type | event |
| Alerts | |
| Level | notice |
| General | |
| Log Description | SDWAN status |
| Log ID | 0113022923 |
| Message | Service prioritized by performance metric will be redirected in sequence order. |
| Sequence Number | 2,1 |
| Virtual Domain | root |
| Others | |
| Date/Time | 23:57:29 |
| Destination End User ID | 3 |
| Destination Endpoint ID | 3 |
| Device Time | 2022-03-04 14:57:27 |
| Event Time | 1646434647595788893 |
| Event Type | Service |
| Metric | latency |
| Service ID | 1 |
| Time Stamp | 2022-03-04 23:57:29 |
| Time Zone | -0800 |
| UEBA Endpoint ID | 3 |
| UEBA User ID | 3 |
| logger | 700030237 |

Exhibit B

| |
|---|
| branch1_fgt # diagnose sys sdwan member |
| Member(1): interface: port1, flags=0x0 , gateway: 192.2.0.2, priority: 0 1024, weight: 0 |
| Member(2): interface: port2, flags=0x0 , gateway: 192.2.0.10, priority: 0 1024, weight: 0 |
| config service |
| edit 1 |
| set name "Critical-DIA" |
| set mode priority |
| set src "LAN-net" |
| set internet-service enable |
| set internet-service-app-ctrl 16354 41468 16920 |
| set health-check "Level3_DNS" |
| set priority-members 1 2 |
| next |
| end |

Exhibit A shows an SD-WAN event log and exhibit B shows the member status and the SD-WAN rule configuration.
Based on the exhibits, which two statements are correct? (Choose two.)

- A. FortiGate updated the outgoing interface list on the rule so it prefers port2.
- B. Port2 has the highest member priority.
- C. Port2 has a lower latency than port1.
- D. SD-WAN rule ID 1 is set to lowest cost (SLA) mode.

Answer: AC

NEW QUESTION 15

Refer to the exhibits.

Exhibit A

Edit Performance SLA

Name: Level3_DNS

IP Version: ☒ IPv4 ☐ IPv6

Probe Mode: ☒ Active ☐ Passive ☐ Prefer Passive

Protocol: ☒ Ping ☐ TCP ECHO ☐ UDP ECHO ☐ HTTP ☐ TWAMP

Server: 4.2.2.1
4.2.2.2

Participants: All SD-WAN Members Specify

port1
port2
2 Entries

Enable Probe Packets: ☒

SLA Targets

Add Target

Link Status

Interval: 500 Milliseconds

Failure Before Inactive: 3 (max 3600)

Restore Link After: 2 (max 3600)

Action When Inactive

Update Static Route: ☒

Cascade Interfaces: ☒

Exhibit B

```
branch1_fgt # diagnose sys sdwan member | grep port
Member(1): interface: port1, flags=0x0 , gateway: 192.2.0.2, priority: 0 1024, weight: 0
Member(2): interface: port2, flags=0x0 , gateway: 192.2.0.10, priority: 0 1024, weight: 0

branch1_fgt # get router info routing-table all | grep port
S*      0.0.0.0/0 [1/0] via 192.2.0.2, port1
        [1/0] via 192.2.0.10, port2
S       8.8.8.8/32 [10/0] via 192.2.0.11, port2
C       10.0.1.0/24 is directly connected, port5
S       172.16.0.0/16 [10/0] via 172.16.0.2, port4
C       172.16.0.0/29 is directly connected, port4
C       192.2.0.0/29 is directly connected, port1
C       192.2.0.8/29 is directly connected, port2
C       192.168.0.0/24 is directly connected, port10

branch1_fgt # diagnose sys sdwan health-check status Level3_DNS
Health Check(Level3_DNS):
Seq(1 port1): state(alive), packet-loss(0.000%) latency(1.919), jitter(0.137), bandwidth-
up(10238), bandwidth-dw(10238), bandwidth-bi(20476) sla_map=0x0
Seq(2 port2): state(alive), packet-loss(0.000%) latency(1.509), jitter(0.101), bandwidth-
up(10238), bandwidth-dw(10238), bandwidth-bi(20476) sla_map=0x0
```

Exhibit A shows the SD-WAN performance SLA and exhibit B shows the SD-WAN member status, the routing table, and the performance SLA status. If port2 is detected dead by FortiGate, what is the expected behavior?

- A. Port2 becomes alive after three successful probes are detected.
- B. FortiGate removes all static routes for port2.
- C. The administrator manually restores the static routes for port2, if port2 becomes alive.
- D. Host 8.8.8.8 is reachable through port1 and port2.

Answer: B

Explanation:

This is due to Update static route is enable which removes the static route entry referencing the interface if the interface is dead

NEW QUESTION 18

Which two tasks are part of using central VPN management? (Choose two.)

- A. You can configure full mesh, star, and dial-up VPN topologies.
- B. You must enable VPN zones for SD-WAN deployments.
- C. FortiManager installs VPN settings on both managed and external gateways.
- D. You configure VPN communities to define common IPsec settings shared by all VPN gateways.

Answer: AD

NEW QUESTION 22

Refer to the exhibit.

```
# diagnose sys session list

session info: proto=6 proto_state=01 duration=39 expire=3593 timeout=3600 flags=00000000
socktype=0 sockport=0 av_idx=0 use=4
state=may_dirty npu
origin->sink: org pre->post, reply pre->post dev=7->5/5->7 gwy=10.10.10.1/10.9.31.160
hook=pre dir=org act=noop 10.9.31.160:7932->10.0.1.7:22(0.0.0.0:0)
hook=post dir=reply act=noop 10.0.1.7:22->10.9.31.160:7932(0.0.0.0:0)
pos/(before,after) 0/(0,0), 0/(0,0)
misc=0 policy_id=1 auth_info=0 chk_client_info=0 vd=0
serial=00045e02 tos=ff/ff app_list=0 app=0 url_cat=0
sdwan_mbr_seq=1 sdwan_service_id=1
rpd_b_link_id=800000000 rpd_b_svc_id=0 ngfwid=n/a
npu_state=0x4000c00
npu info: flag=0x81/0x81, offload=8/8, ips_offload=0/0, epid=64/76, ipid=76/64,
vlan=0x0000/0x0000
vlifid=76/64, vtag_in=0x0000/0x0000 in_npu=1/1, out_npu=1/1, fwd_en=0/0, qid=2/2
reflect info 0:
dev=7->6/6->7
npu_state=0x4000800
npu info: flag=0x00/0x81, offload=0/8, ips_offload=0/0, epid=0/76, ipid=0/65, vlan=0x0000/0x0000
vlifid=0/65, vtag_in=0x0000/0x0000 in_npu=0/1, out_npu=0/1, fwd_en=0/0, qid=0/2
total reflect session num: 1
total session 1

# diagnose netlink interface list

if=port1 family=00 type=1 index=5 mtu=1500 link=0 master=0
if=port2 family=00 type=1 index=6 mtu=1500 link=0 master=0
if=port3 family=00 type=1 index=7 mtu=1500 link=0 master=0
```

The exhibit shows the details of a session and the index numbers of some relevant interfaces on a FortiGate appliance that supports hardware offloading. Based on the information shown in the exhibits, which two statements about the session are true? (Choose two.)

- A. The reply direction of the asymmetric traffic flows from port2 to port3.
- B. The auxiliary session can be offloaded to hardware.
- C. The original direction of the symmetric traffic flows from port3 to port2.
- D. The main session cannot be offloaded to hardware.

Answer: AB

NEW QUESTION 27

What are two benefits of using the Internet service database (ISDB) in an SD-WAN rule? (Choose two.)

- A. The ISDB is dynamically updated and reduces administrative overhead.
- B. The ISDB requires application control to maintain signatures and perform load balancing.
- C. The ISDB applies rules to traffic from specific sources, based on application type.
- D. The ISDB contains the IP addresses and port ranges of well-known internet services.

Answer: AD

NEW QUESTION 30

Refer to the exhibit.

```
id=20085 trace_id=847 func=print_pkt_detail line=5428 msg="vd-root:0 received a
packet(proto=6, 10.1.10.1:33920->74.125.195.93:443) from port3. flag [.], seq
2018554516, ack 4141536963, win 2238"
id=20085 trace_id=847 func=resolve_ip_tuple_fast line=5508 msg="Find an existing
session, id-000008c1, original direction"
id=20085 trace id=847 func=shaper handler line=821 msg="exceeded shaper limit, drop"
```

Which conclusion about the packet debug flow output is correct?

- A. The original traffic exceeded the maximum packets per second of the outgoing interface, and the packet was dropped.
- B. The reply traffic exceeded the maximum bandwidth configured in the traffic shaper, and the packet was dropped.
- C. The original traffic exceeded the maximum bandwidth of the outgoing interface, and the packet was dropped.
- D. The original traffic exceeded the maximum bandwidth configured in the traffic shaper, and the packet was dropped.

Answer: D

NEW QUESTION 35

Refer to the exhibit.

```
branch1_fgt # diagnose sys sdwan service 1

Service(3): Address Mode(IPV4) flags=0x200 use-shortcut-sla
Gen(6), TOS(0x0/0x0), Protocol(0: 1->65535), Mode(manual)
Members(2):
  1: Seq_num(3 T_INET_0_0), alive, selected
  2: Seq_num(4 T_INET_1_0), alive, selected
Src address(1):
  10.0.1.0-10.0.1.255

Dst address(1):
  10.0.0.0-10.255.255.255

branch1_fgt # diagnose sys sdwan member | grep T_INET_
Member(3): interface: T_INET_0_0, flags=0x4 , gateway: 100.64.1.1, priority: 10 1024,
weight: 0
Member(4): interface: T_INET_1_0, flags=0x4 , gateway: 100.64.1.9, priority: 0 1024,
weight: 0

branch1_fgt # get router info routing-table all | grep T_INET_
S      10.0.0.0/8 [1/0] via T_INET_1_0 tunnel 100.64.1.9
```

An administrator is troubleshooting SD-WAN on FortiGate. A device behind branch1_fgt generates traffic to the 10.0.0.0/8 network. The administrator expects the traffic to match SD-WAN rule ID 1 and be routed over T_INET_0_0. However, the traffic is routed over T_INET_1_0. Based on the output shown in the exhibit, which two reasons can cause the observed behavior? (Choose two.)

- A. The traffic matches a regular policy route configured with T_INET_1_0 as the outgoing device.
- B. T_INET_1_0 has a lower route priority value (higher priority) than T_INET_0_0.
- C. T_INET_0_0 does not have a valid route to the destination.
- D. T_INET_1_0 has a higher member configuration priority than T_INET_0_0.

Answer: AC

Explanation:

<https://community.fortinet.com/t5/FortiGate/Technical-Tip-Assigning-Priority-to-SD-WAN-Members-for-Defau>

NEW QUESTION 37

Refer to the exhibit.

```
# get router info routing-table all
...
B      10.0.2.0/24 [200/0] via 10.201.1.2 [3] (recursive via VPN0 tunnel 100.64.1.1), 00:00:54
        [200/0] via 10.202.1.2 [3] (recursive via VPN1 tunnel 100.64.1.9), 00:00:54
        [200/0] via 10.203.1.1 [3] (recursive via VPN2 tunnel 172.16.1.5), 00:00:54
...
```

The device exchanges routes using IBGP.

Which two statements are correct about the IBGP configuration and routing information on the device? (Choose two.)

- A. Each BGP route is three hops away from the destination.
- B. ibgp-multipath is disabled.
- C. additional-path is enabled.
- D. You can run the get router info routing-table database command to display the additional paths.

Answer: CD

NEW QUESTION 40

Which two interfaces are considered overlay links? (Choose two.)

- A. LAG
- B. IPsec
- C. Physical
- D. GRE

Answer: BD

NEW QUESTION 44

.....

THANKS FOR TRYING THE DEMO OF OUR PRODUCT

Visit Our Site to Purchase the Full Set of Actual NSE7_SDW-7.0 Exam Questions With Answers.

We Also Provide Practice Exam Software That Simulates Real Exam Environment And Has Many Self-Assessment Features. Order the NSE7_SDW-7.0 Product From:

https://www.2passeasy.com/dumps/NSE7_SDW-7.0/

Money Back Guarantee

NSE7_SDW-7.0 Practice Exam Features:

- * NSE7_SDW-7.0 Questions and Answers Updated Frequently
- * NSE7_SDW-7.0 Practice Questions Verified by Expert Senior Certified Staff
- * NSE7_SDW-7.0 Most Realistic Questions that Guarantee you a Pass on Your FirstTry
- * NSE7_SDW-7.0 Practice Test Questions in Multiple Choice Formats and Updatesfor 1 Year