

PL-900 Dumps

Microsoft Power Platform Fundamentals

<https://www.certleader.com/PL-900-dumps.html>



NEW QUESTION 1

- (Exam Topic 1)

You need to explain the major components of the Common Data Model (CDM) and their functions. Match each term to its definition.

Instructions: To answer, drag the appropriate term from the column on the left to its definition on the right. Each term may be used once, more than once, or not at all. Each correct match is worth one point.

NOTE: Each correct selection is worth one point.

| Tools | Answer Area | Tool |
|--------------------------|---|------|
| Entities | | |
| Data connectors | Helps jumpstart application development by leveraging business logic, security, and integrations. | Tool |
| Common Data Service | A set of records used to store data. | Tool |
| Common Data Model | | |
| Microsoft Power Platform | | |
| Workflows | | |

- A. Mastered
- B. Not Mastered

Answer: A

Explanation:

Box 1: Microsoft Power Platform

Power Platform combines the robust power of PowerApps, PowerBI, and Microsoft Flow into one powerful business application platform – providing quick and easy app building and data insights. Each component of the Microsoft Power Platform is built on the Common Data Service for Apps. Each component is dynamic by itself, but brilliant and masterful when combined.

The Microsoft Power platform brings all your data together into a common data model. Box 2: Entities

An entity is a set of records used to store data, similar to how a table stores data within a database.

Reference:

<https://community.dynamics.com/365/b/encloud9dynamicss365crm/posts/an-introduction-to-the-microsoft-pow> <https://docs.microsoft.com/en-us/powerapps/maker/common-data-service/data-platform-intro>

NEW QUESTION 2

- (Exam Topic 1)

You need to implement Microsoft Business Applications along with the Microsoft Power platform. Which three Microsoft products are part of the Power platform?

Each correct answer presents a complete solution.

NOTE: Each correct selection is worth one point.

- A. Microsoft Power Apps
- B. Azure Active Directory
- C. Microsoft Flow
- D. Azure Machine Learning
- E. Microsoft Power BI

Answer: ACE

Explanation:

The Power Platform uses PowerApps, Power BI, and Power Automate (previously named Flow) to customize, extend, and build all the apps you need for your business and unlock the potential of Office 365 and Dynamics 365.

Reference:

<https://docs.microsoft.com/en-us/learn/powerplatform/>

NEW QUESTION 3

- (Exam Topic 1)

A company uses Power Platform.

You must ensure that users cannot share customer data with other users. You must also ensure that users cannot connect to data sources unless you grant the user explicit permissions to access a data source.

You need to recommend solutions to meet the company's security requirements.

Which two types of policies should you recommend? Each correct answer presents part of the solution.

NOTE: Each correct selection is worth one point.

- A. Office cloud policies
- B. Group Policy Objects
- C. environment-level policies
- D. tenant-level policies
- E. preset security policies

Answer: CD

Explanation:

Reference:

<https://docs.microsoft.com/en-us/power-platform/admin/wp-data-loss-prevention> <https://docs.microsoft.com/en-us/power-platform/admin/create-dlp-policy>

NEW QUESTION 4

- (Exam Topic 1)

This question requires that you evaluate the BOLD text to determine if it is correct.

You have a Power Apps app. You create a new version of the app and then publish the new version. A customer goes through the process of restoring the previous version of the app. In the Version tab for the app, you will see two versions of the app.

Review the underlined text. If it makes the statement correct, select "No change is needed." If the statement is incorrect, select the answer choice that makes the statement correct.

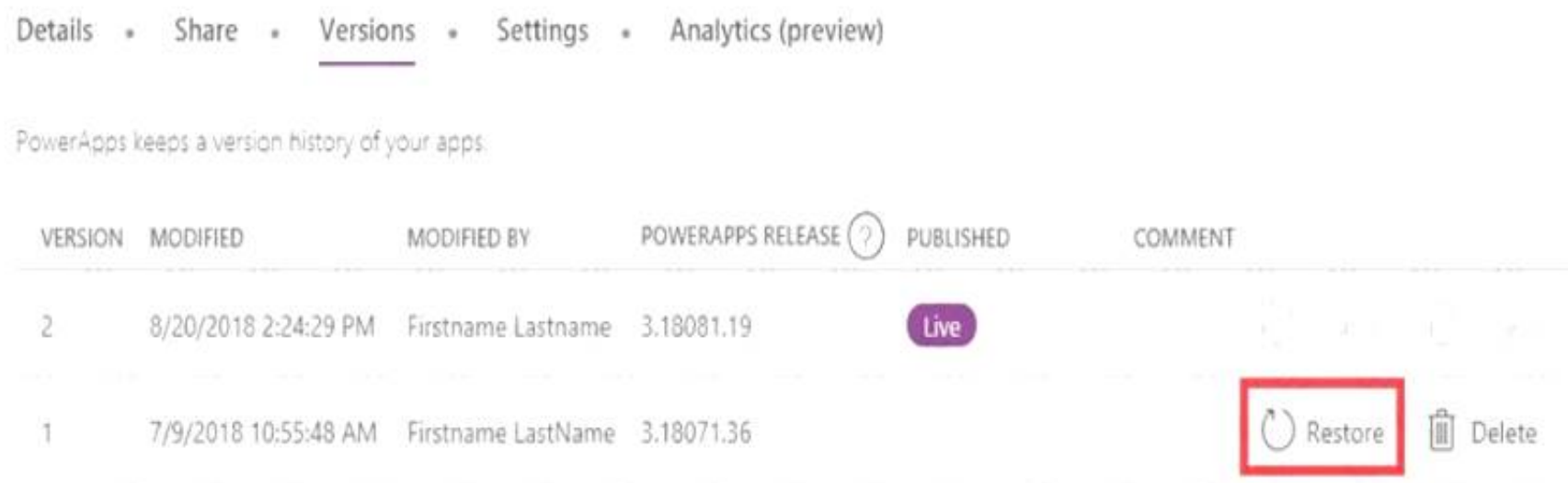
- A. No change is needed.
- B. one
- C. three
- D. four

Answer: C

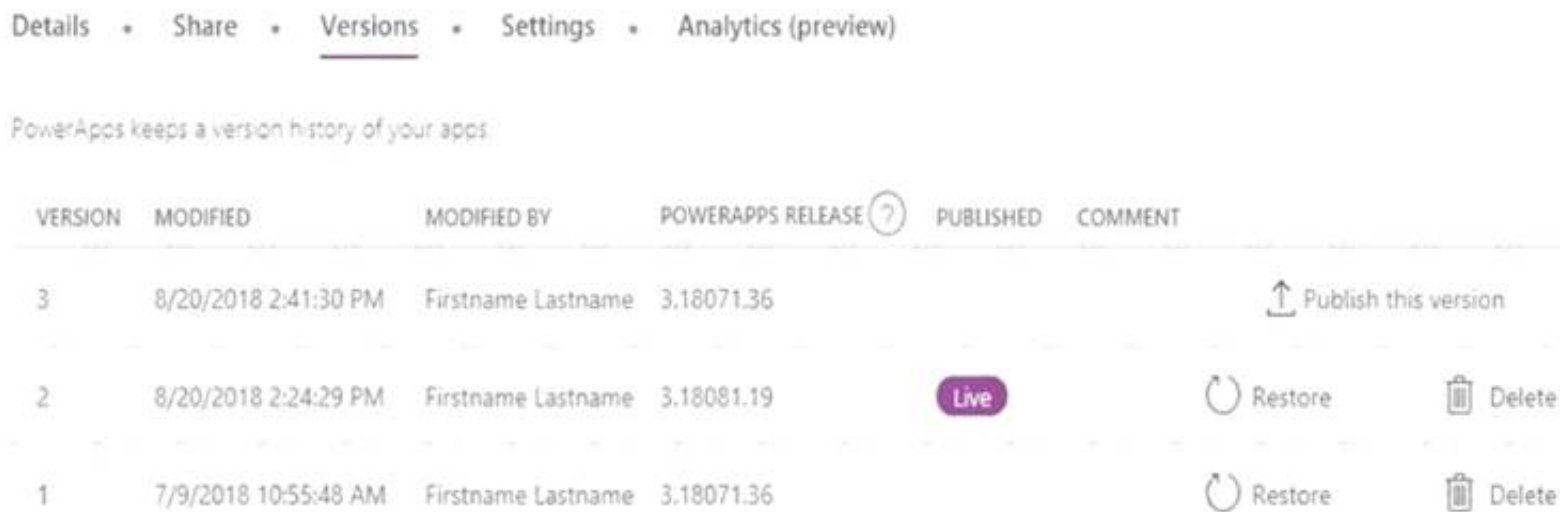
Explanation:

Restore a canvas app to a previous version in PowerApps.

- * 1. Open powerapps.com, and then click or tap Apps in the left navigation bar.
- * 2. Near the right edge, click or tap the info icon for the app that you want to restore.
- * 3. Click or tap the Versions tab, and then click or tap Restore for the version that you want to restore.



- * 4. In the confirmation dialog box, click or tap Restore. A new version is added to your list.



Reference:

<https://docs.microsoft.com/en-us/powerapps/maker/canvas-apps/restore-an-app>

NEW QUESTION 5

- (Exam Topic 1)

You create a user-owned custom entity by using Common Data Service.

For each of the following statements, select Yes if the statement is true. Otherwise, select No. NOTE: Each correct selection is worth one point.

| Statement | Yes | No |
|--|-----------------------|-----------------------|
| You can change the entity ownership from User to Organization-owned. | <input type="radio"/> | <input type="radio"/> |
| You can create a business rule for a custom entity that can be used in a Flow. | <input type="radio"/> | <input type="radio"/> |

- A. Mastered
- B. Not Mastered

Answer: A

Explanation:

Box 1: No

Common Data Service supports two types of record ownership. Organization owned, and User or Team owned. This is a choice that happens at the time the entity is created and can't be changed.

Box 2: Yes

By combining conditions and actions, you can do any of the following with business rules: Set field values

Clear field values

Set field requirement levels Show or hide fields

Enable or disable fields

Validate data and show error messages

Create business recommendations based on business intelligence. Reference:

<https://docs.microsoft.com/en-us/power-platform/admin/wp-security-cds>

NEW QUESTION 6

- (Exam Topic 1)

A large retail company implements Power Apps, Microsoft Flow, and the Common Data Service.

The board of directors is asking whether users are finding value in the technology. The company would like to measure and report usage of the software.

You need to recommend a tool to determine software usage. What should you recommend?

- A. Microsoft Intune
- B. Azure Stream Analytics
- C. Power Platform Analytics
- D. Dynamics 365 Product Insights

Answer: C

Explanation:

The Power Platform Analytics Usage report is the default reports seen by the logged in environment admin. It provides total app launches and daily active users across all apps in the environment. Admins can filter the view with attributes like device platform, player version, country, state, and city.

Reference:

<https://docs.microsoft.com/en-us/power-platform/admin/analytics-powerapps>

NEW QUESTION 7

- (Exam Topic 1)

A rapidly growing company wants to empower users to build apps, automate business processes, and analyze data without requiring I expertise or development skills and without increasing IT expenses and dependencies.

You need to recommend tools so that users can accomplish specific tasks.

Which tools should you recommend? To answer, select the appropriate options in the answer area. NOTE: Each correct selection is worth one point.

| Scenario | Application |
|--|--|
| Build automatic workflows that access multiple data sources. | <div><div></div><div>AI Builder</div><div>Power Apps</div><div>Microsoft Flow</div><div>Azure Functions</div><div>Power BI</div></div> |
| Create custom apps that address specific business needs. | <div><div></div><div>AI Builder</div><div>Power Apps</div><div>Microsoft Flow</div><div>Azure Functions</div><div>Power BI</div></div> |
| Design insightful data visualizations. | <div><div></div><div>AI Builder</div><div>Power Apps</div><div>Microsoft Flow</div><div>Azure Functions</div><div>Power BI</div></div> |

- A. Mastered
- B. Not Mastered

Answer: A

Explanation:

Box 1: Microsoft Flow

Microsoft Flow, now called Power Automate, is cloud-based software that allows employees to create and automate workflows and tasks across multiple

applications and services without help from developers.
Box 2: Power Apps
PowerApps is a suite of apps, services, connectors and data platform that provides a rapid application development environment to build custom apps for your business needs.
Box 3: Power BI
Power BI is a business analytics solution that lets youvisualizemyour data and share insights across your organization, or embed them in your app or website. Connect to hundreds of data sources and bring your data to life with live dashboards and reports.
Reference:
<https://docs.microsoft.com/en-us/powerapps/powerapps-overview>

NEW QUESTION 8

- (Exam Topic 1)
A company plans to use Power Platform to build apps which address specific business challenges.
You need to recommend the appropriate types of Power Apps to use.
What should you recommend? To answer, select the appropriate option in the answer area. NOTE: Each correct selection is worth one point.

| Scenario | Tool |
|--|---|
| Field technicians need a mobile app to capture the location and the image of defective prodcuts. | <div><div></div><div>Canvas app</div><div>Power Apps portal</div><div>Common Data Service</div></div> |
| Sales representatives need to see different views and dashboards in the sales app. | <div><div></div><div>Canvas app</div><div>Model-driven app</div><div>Power Apps portal</div></div> |
| External customers need to view the progress of their service cases. | <div><div></div><div>Model-driven app</div><div>Power Apps portal</div><div>Common Data Service</div></div> |

- A. Mastered
- B. Not Mastered

Answer: A

Explanation:

Reference:
<https://docs.microsoft.com/en-us/powerapps/maker/canvas-apps/getting-started> <https://docs.microsoft.com/en-us/powerapps/maker/model-driven-apps/model-driven-app-overview> <https://docs.microsoft.com/en-us/powerapps/maker/portals/overview>

NEW QUESTION 9

- (Exam Topic 1)
You are a customer service manager.
You need to implement a Power Apps portal that allows customers to submit cases. Which type of data source is used?

- A. Dynamics 365 Connector
- B. Microsoft SharePoint
- C. Microsoft Azure Storage
- D. Common Data Service

Answer: B

Explanation:

SharePoint can be set up to setup customer feedback.
Note: The PowerApp uses Finance and Operations connector to grab sales order information and SharePoint connector to connect and write the data to SharePoint list.
Reference:
<https://powerapps.microsoft.com/en-us/blog/scenario-2-collect-customer-feedback-in-sharepoint-after-order-delivery/>

NEW QUESTION 10

- (Exam Topic 1)
A company uses Power Apps.
You need to perform administrative tasks for the company.
Which admin centers should you use? To answer, drag the appropriate admin centers to the correct requirements. Each admin center may be used once, more than once, or not at all. You may need to drag the split bar between panes or scroll to view content.
NOTE: Each correct selection is worth one point.

| Admin centers | Requirement | Admin center |
|---------------------------|--|--------------|
| Azure Active Directory | Create user accounts for Power Apps. | Admin center |
| Dynamics 365 Admin center | | |
| Power Apps Admin center | Assign the Environment Maker role to a user. | Admin center |
| Power BI Admin portal | | |

- A. Mastered
- B. Not Mastered

Answer: A

Explanation:

Box 1: Azure Active Directory
Create the company users in the Azure Active Directory. Box 2: Power Apps admin center
In the Power Apps Admin center, manage environments that you've created and those for which you have been added to the Environment Admin or System Administrator role. From the admin center, you can perform these administrative actions:
Create environments. Rename environments.
Add or remove a user or group from either the Environment Admin or Environment Maker role. Etc.
Reference:
<https://docs.microsoft.com/en-us/power-platform/admin/environments-administration> <https://docs.microsoft.com/en-us/dynamics365/marketing/dynamics-365-admin-center> <https://powerapps.microsoft.com/sv-se/blog/introducing-admin-center-for-powerapps/>

NEW QUESTION 10

- (Exam Topic 1)
A company has locations in multiple regions. The company develops solutions based on Power Apps and Power Automate. You need to recommend features to support the implementation.
Which Power Platform features should you recommend? To answer, drag the appropriate features to the correct requirements. Each feature may be used once, more than once, or not at all. You may need to drag the split bar between panes or scroll to view content.
NOTE: Each correct selection is worth one point.

| Features | Requirement | Feature |
|--------------------|--|---------|
| Environment | Ensure fastest response times for each company location. | Feature |
| Security group | Create test and production copies of the data and apps. | Feature |
| SharePoint library | | |

- A. Mastered
- B. Not Mastered

Answer: A

Explanation:

Reference:
<https://docs.microsoft.com/en-us/power-platform/admin/environments-overview> <https://docs.microsoft.com/en-us/power-platform/admin/control-user-access>

NEW QUESTION 13

- (Exam Topic 2)
A coworker is creating an app in Power Apps and needs to automatically synchronize data from an external source. The coworker is unable to locate a suitable Microsoft approved connector template in AppSource.
You need to recommend a solution for the coworker. What should you recommend?

- A. Create a custom connector.
- B. Ask the outside source to send you the data once a week.
- C. Use Microsoft Flow to connect to the database.
- D. Open a ticket with Microsoft and request a new connector.
- E. Use Microsoft Azure Service Bus.

Answer: A

Explanation:

There are 250 + predefined connectors that you can use in your PowerApps and in your Microsoft Flows. If

you do not find any that suits your needs you have the possibility to create a Custom Connector.

Note: A Custom Connector is a wrapper around a REST API (Logic Apps also supports SOAP APIs) that allows Logic Apps, Microsoft Flow, or PowerApps to communicate with that REST or SOAP API.

Reference:

<https://carinaclaesson.com/2019/09/06/setting-up-a-custom-connector-from-an-openapi-file-and-utilizing-it-in-p>

NEW QUESTION 14

- (Exam Topic 2)

A company needs to create several workflows and applications to help streamline their sales operations. You need to determine which applications are appropriate for given scenarios.

Which applications should you use? To answer, select the appropriate options in the answer area. NOTE: Each correct selection is worth one point.

| Scenario | Application |
|--|--|
| Create no-code workflows that use different systems. | <div><div></div><div>Azure Logic Apps</div><div>Power Apps</div><div>Power Automate</div><div>Dynamics 365 workflows</div></div> |
| Build a no-code mobile application. | <div><div></div><div>Azure Logic Apps</div><div>Power Apps</div><div>Power Automate</div><div>Dynamics 365 workflows</div></div> |
| Administer your workflow in Microsoft Azure. | <div><div></div><div>Azure Logic Apps</div><div>Power Apps</div><div>Power Automate</div><div>Dynamics 365 workflows</div></div> |
| Build a mobile application by using Common Data Service. | <div><div></div><div>Azure Logic Apps</div><div>Power Apps</div><div>Power Automate</div><div>Dynamics 365 workflows</div></div> |

- A. Mastered
B. Not Mastered

Answer: A

Explanation:

Reference:

<https://docs.microsoft.com/en-us/power-automate/getting-started> <https://docs.microsoft.com/en-us/azure/logic-apps/logic-apps-overview>

<https://powerapps.microsoft.com/pl-pl/blog/business-model-may/>

NEW QUESTION 15

- (Exam Topic 2)

You are planning to use the Business Card Reader and Sentiment Analysis prebuilt AI models to build solutions.

For each of the following statements, select Yes if the statement is true. Otherwise, select No.

NOTE: Each correct selection is worth one point.

| Statement | Yes | No |
|---|-----------------------|-----------------------|
| The Business Card Reader model can be used with both Power Automate and Power Apps. | <input type="radio"/> | <input type="radio"/> |
| The Sentiment Analysis model can be used Power Automate only. | <input type="radio"/> | <input type="radio"/> |

- A. Mastered
B. Not Mastered

Answer: A

Explanation:

Graphical user interface, text Description automatically generated

Reference:

<https://docs.microsoft.com/en-us/ai-builder/business-card-reader-component-model-driven> <https://docs.microsoft.com/en-us/ai-builder/flow-business-card-reader>

<https://docs.microsoft.com/en-us/ai-builder/flow-sentiment-analysis>

NEW QUESTION 18

- (Exam Topic 2)

You create a Power Virtual Agents chatbot.

You need to share the bot with other team members so that they can try out the bot before you share the bot with customers.

What should you use?

- A. demo website
- B. live production website
- C. test chat feature

Answer: C

Explanation:

Reference:

<https://docs.microsoft.com/en-us/power-virtual-agents/authoring-test-bot>

NEW QUESTION 21

- (Exam Topic 2)

You are creating a model-driven Power Apps app. You want to ensure that the app can be used by individuals who have vision impairments.

For each of the following statements, select Yes if the statement is true. Otherwise, select No. NOTE: Each correct selection is worth one point.

| Statement | Yes | No |
|--|-----------------------|-----------------------|
| Power Apps apps can be built with hot key support and designed so they do not require a touch screen or mouse. | <input type="radio"/> | <input type="radio"/> |
| Only model-driven Power Apps have support for using a screen reader without the need for a connector. | <input type="radio"/> | <input type="radio"/> |
| The accessibility checker can be run for your Power Apps app to provide notifications of accessibility violations as well as tips for making it even more user friendly. | <input type="radio"/> | <input type="radio"/> |

- A. Mastered
- B. Not Mastered

Answer: A

Explanation:

Box 1: Yes

You can use keyboard shortcuts in PowerApps. Keyboard shortcuts give you an alternate way to do common tasks instead of using your mouse or tapping with your finger. They help in seamless navigation of the interface.

Box 2: No

The following software combinations are the supported recommendations for consuming PowerApps with a screen reader:

Windows: Microsoft Edge / Narrator macOS: Safari / VoiceOver Android: PowerApps app / Talkback iOS: PowerApps app / VoiceOver

Box 3: Yes

Users who have vision, hearing, or other impairments can use your canvas app more easily and successfully if you consider accessibility as you design how the app looks and behaves. If you're not sure how to make your app more accessible, you can run the Accessibility checker in PowerApps Studio. This tool not only finds potential accessibility issues but also explains why each might be a potential problem for users who have a specific disability and offers suggestions on how to resolve each issue. The Accessibility checker detects screen-reader and keyboard issues for you, and you can find information about how to fix color-contrast issues by using accessible colors.

Reference:

<https://docs.microsoft.com/en-us/powerapps/user/keyboard-shortcuts> <https://docs.microsoft.com/en-us/powerapps/user/screen-reader>

<https://docs.microsoft.com/en-us/powerapps/maker/canvas-apps/accessibility-checker>

NEW QUESTION 22

- (Exam Topic 2)

Your company wants to create a help desk system and implement Dynamics 365 Customer Service. The company has the following requirements:

- Provide an application to allow support team staff to chat live with a customer.
- Automatically import data from a Microsoft Excel spreadsheet once a day.
- Provide a chatbot that can assist customers who need support.

You need to determine which applications to use to meet the requirements.

Which applications should you use? To answer, select the appropriate options in the answer area. NOTE: Each correct selection is worth one point.

| Requirement | Application |
|--|---|
| Automatically import data from a Microsoft Excel spreadsheet once a day. | <div><div></div><div>Custom Connector</div><div>Azure Data Lake</div><div>Power Automate</div><div>Power BI</div></div> |
| Provide a chatbot that can assist customers who need support. | <div><div></div><div>Power Virtual Agent</div><div>Power Automate</div></div> |

- A. Mastered
B. Not Mastered

Answer: A

Explanation:

Graphical user interface, text, application, chat or text message Description automatically generated

Reference:

<https://docs.microsoft.com/en-us/power-virtual-agents/fundamentals-what-is-power-virtual-agents>

A 10-step Guide to Excel Automation using Power Automate Desktop | by Utkarsh Shahdeo | Medium

NEW QUESTION 24

- (Exam Topic 2)

A company plans to implement solutions that use Common Data Service as a data storage.

You need to recommend features to meet the company's needs.

Which features should you recommend? To answer, drag the appropriate features to the correct requirements. Each feature may be used once, more than once, or not at all. You may need to drag the split bar between panes or scroll to view content.

NOTE: Each correct selection is worth one point.

| Features | Answer Area | | | | | | | | | | |
|------------------------|--|-------------|---------|----------------|--|------------------------|---------|-------------------|---------|--|---------|
| | <table><tr><th>Requirement</th><th>Feature</th></tr><tr><td>business rules</td><td></td></tr><tr><td>business process flows</td><td>Feature</td></tr><tr><td>Common Data Model</td><td>Feature</td></tr><tr><td></td><td>Feature</td></tr></table> | Requirement | Feature | business rules | | business process flows | Feature | Common Data Model | Feature | | Feature |
| Requirement | Feature | | | | | | | | | | |
| business rules | | | | | | | | | | | |
| business process flows | Feature | | | | | | | | | | |
| Common Data Model | Feature | | | | | | | | | | |
| | Feature | | | | | | | | | | |

- A. Mastered
B. Not Mastered

Answer: A

Explanation:

Box 1: business rules

You can create business rules and recommendations to apply logic and validations without writing code or creating plug-ins. Business rules provide a simple interface to implement and maintain fast-changing and commonly used rules.

Box 2: business process flows

Flows Power Automate includes several types of processes, each designed for a different purpose:

- Automated flows. Create a flow that performs one or more tasks automatically after it's triggered by an event.
- Button flows. Perform repetitive tasks simply by tapping a button on your mobile device.
- Scheduled flows. Create a flow that performs one or more tasks on a schedule such as once a day, on a specific date, or after a certain time.
- Business process flows. Ensure that people enter data consistently and follow the same steps every time they work in an app by creating a business process flow.
- Workflows and actions. Dynamics 365 customizers may be familiar with the classic Common Data Service processes, which are workflows and actions.

Box 3: Common Data Model

Model-driven app design is a component-focused approach to app development. Model-driven app design doesn't require code and the apps you make can be simple or very complex. Unlike canvas app development where the designer has complete control over app layout, with model-driven apps much of the layout is determined for you and largely designated by the components you add to the app.

Reference:

<https://docs.microsoft.com/en-us/powerapps/maker/model-driven-apps/guide-staff-through-common-tasks-proce>

<https://docs.microsoft.com/en-us/powerapps/maker/model-driven-apps/model-driven-app-overview>

NEW QUESTION 29

- (Exam Topic 2)

A company is evaluating Power Platform and has questions about the role that Common Data Service plays in using Power Apps and Power Automate. For each of the following statements, select Yes if the statement is true. Otherwise, select No. NOTE: Each correct selection is worth one point.

| Statement | Yes | No |
|---|-----------------------|-----------------------|
| Model-driven apps require a Common Data Service database. | <input type="radio"/> | <input type="radio"/> |
| A flow instance can only access one Common Data Service database. | <input type="radio"/> | <input type="radio"/> |
| Canvas apps require a Common Data Service database. | <input type="radio"/> | <input type="radio"/> |

- A. Mastered
B. Not Mastered

Answer: A

Explanation:

| Statement | Yes | No |
|---|----------------------------------|-----------------------|
| Model-driven apps require a Common Data Service database. | <input checked="" type="radio"/> | <input type="radio"/> |
| A flow instance can only access one Common Data Service database. | <input checked="" type="radio"/> | <input type="radio"/> |
| Canvas apps require a Common Data Service database. | <input checked="" type="radio"/> | <input type="radio"/> |

NEW QUESTION 31

- (Exam Topic 3)

You create a set of dashboards and reports for a project team that combines data from different sources in Power BI. Some of the data is considered sensitive. You need to distribute the dashboards and reports securely to the team. What should you create?

- A. a custom data connector
B. a published app
C. a Microsoft flow
D. a Power BI workspace

Answer: B

Explanation:

Reference:

<https://docs.microsoft.com/en-us/power-bi/service-how-to-collaborate-distribute-dashboards-reports>

NEW QUESTION 35

- (Exam Topic 3)

You are a regional sales manager for a large internet retailer. You create a series of Power BI reports and dashboards to help sales associates be more productive and increase sales.

Sales are not increasing as expected.

You need to determine if the new reports are being used and send emails to sales associates to provide guidance on how to use the reports and dashboards.

Which features should you use? To answer, select the appropriate options in the answer area. NOTE: Each correct selection is worth one point.

Requirement

| | |
|--|--|
| Send an email to the sales associates on a predetermined schedule. | <div><div></div><div>▼</div><div>Subscribe</div><div>Share</div><div>Favorites</div><div>Publisher</div></div> |
| Quantify the adoption usage from the sales associates. | <div><div></div><div>▼</div><div>Explore</div><div>Favorites</div><div>Usage metrics</div><div>Performance inspector</div></div> |

- A. Mastered
- B. Not Mastered

Answer: A

Explanation:

Reference:
<https://docs.microsoft.com/en-us/power-bi/consumer/end-user-subscribe> <https://docs.microsoft.com/en-us/power-bi/service-usage-metrics>

NEW QUESTION 40

- (Exam Topic 3)
A company runs a call center to handle customer support inquiries.
The company tracks metrics including the number of incoming calls, call resolution rates, and escalations. The company wants to display the metrics on a shared screen that is visible to all call center staff.
You need to recommend a solution for the company. Which Power Platform feature should you recommend?

- A. AI Builder
- B. Power Automate
- C. Power Apps
- D. Power BI

Answer: D

NEW QUESTION 44

- (Exam Topic 3)
A company manages a chain of retail stores. The company stores a list of retail store names and numbers in one Power BI table. The company stores sales transaction data including a transaction ID in another table.
The transaction ID includes the store number.
You need to show the store name for all retail transactions in all Power BI reports.
Which tool should you use?

- A. Query Editor
- B. Power BI Service
- C. Microsoft Excel
- D. Data Connector

Answer: A

Explanation:

Power BI Desktop comes with Query Editor, where you can connect to one or many data sources, shape and transform the data to meet your needs, then load that model into Power BI Desktop.
Reference:
<https://docs.microsoft.com/en-us/power-bi/desktop-query-overview>

NEW QUESTION 45

- (Exam Topic 3)
You are a district manager for a large retail company. You want to provide sales managers with deeper sales insights to ensure that they can make more informed decisions for their stores.
Store managers must be able to view data in near real-time.
You need to create and share a Power BI dashboard that can be used by the store managers.
Which tools can you use? To answer, drag the appropriate reporting types to the correct requirements. Each reporting type may be used once, more than once, or not at all. You may need to drag the split bar between panes or scroll to view content.

Reporting Types

Power BI Desktop only

Power BI Service only

Power BI Desktop or Power BI Service

Answer Area

| Requirement | Reporting type |
|---|----------------|
| Create Power BI dashboards that contain a single store's sales information. | Reporting type |
| Share the dashboard with your retail managers. | Reporting type |

- A. Mastered
- B. Not Mastered

Answer: A

Explanation:

Reference:
<https://docs.microsoft.com/en-us/power-bi/fundamentals/desktop-getting-started>

NEW QUESTION 46

- (Exam Topic 3)
You create a Power BI dashboard that displays data from Dynamics 365 Customer Engagement. You need to share the Power BI dashboard with coworkers.
What are three possible ways to achieve the goal? Each correct answer presents a complete solution. NOTE: Each correct selection is worth one point.

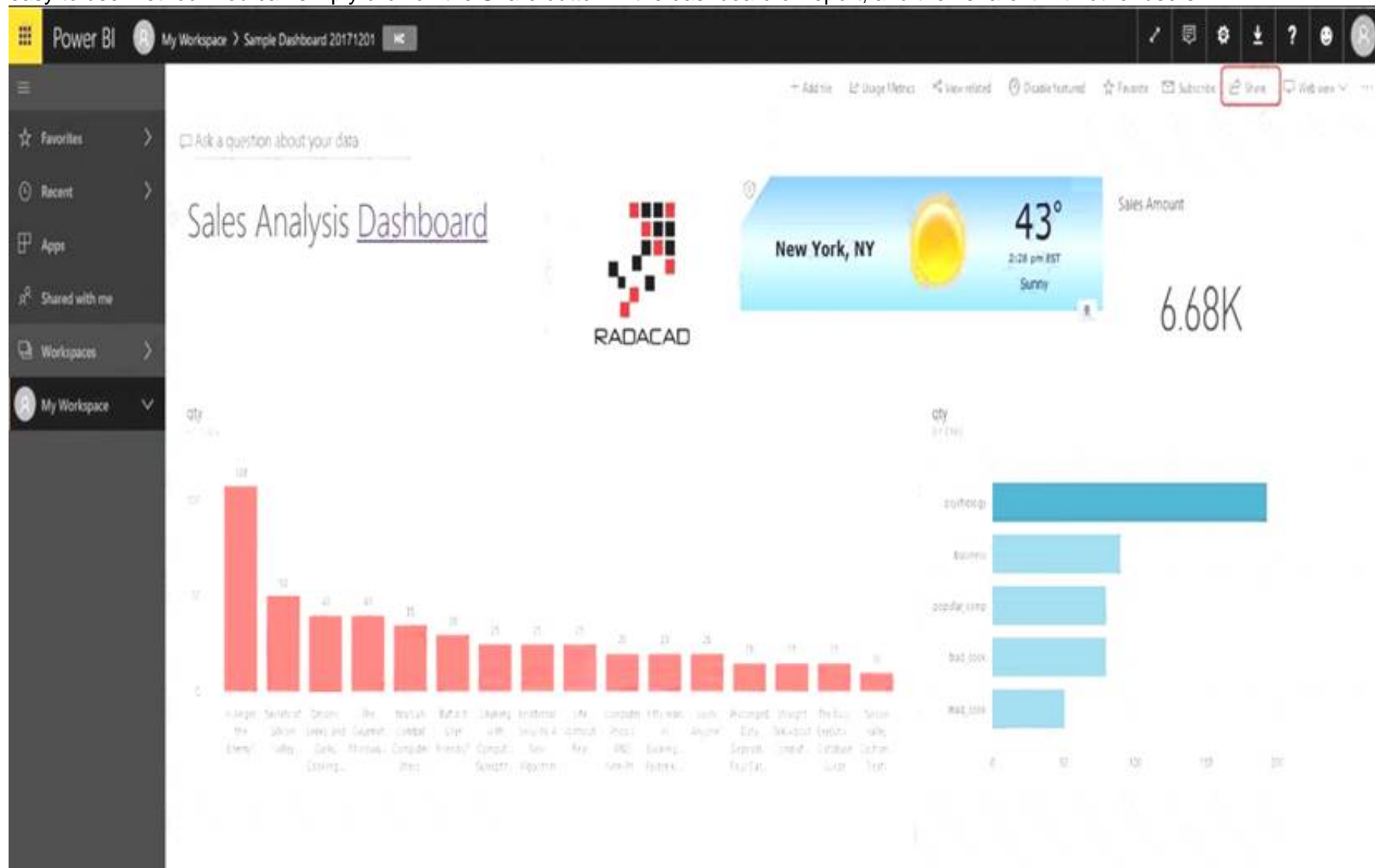
- A. Create a Power BI workspace and grant coworkers permissions.
- B. Publish the dashboard as an app to your coworkers.
- C. Export the data into Common Data Service for others to manipulate in Power BI.

- D. Export the data to Microsoft Excel for coworkers to import and view in Power BI.
E. Embed reports in your company's internal web portal.

Answer: ABE

Explanation:

A: Basic Sharing for Dashboards and Reports through a workspace is the most common way of sharing the Power BI content. Basic Sharing is very simple and easy to use method. You can simply click on the Share button in the dashboard or report, and then share it with other users.



B: Apps are great sharing method for multiple environment, and best way of sharing for users in production environment.

Power BI App is the solution for multiple environment approach. With Power BI App, your development environment (workspace), and user environment (App) are isolated from each other.

Note: If you are using SharePoint online as a portal for document management and some other reasons already, then consider using Embed in SharePoint Online feature of Power BI reports. This method is secure and you can share the report only with Power BI users you want.

E: Sometimes, you don't need a secure way of sharing, you may search for an easy and free way of sharing, and your content is not confidential or sensitive.

Publish to web is your friend in such situation. This is the only free way of sharing in Power BI, but be aware that this method is not secure.

Publish to web method, gives you an embed code, which you can use in any web pages to embed the Power BI report in it

Reference:

<https://radacad.com/power-bi-sharing-methods-comparison-all-in-one-review>

NEW QUESTION 50

- (Exam Topic 3)

A carpet cleaning company uses Dynamics 365 Sales.

The process for entering customer information during onsite sales calls is very complicated. The company wants a simplified screen that allows salespeople to capture the customer name, phone number, and other information while speaking to the customer.

You need to recommend a solution that works on various types of mobile devices. What should you recommend?

- A. Common Data Service
B. Microsoft Flow
C. AI Builder
D. Canvas app
E. Power BI

Answer: E

Explanation:

Reference:

<https://powerapps.microsoft.com/en-us/build-powerapps/>

NEW QUESTION 55

- (Exam Topic 3)

A recent update has been made to a canvas app. The update has caused a negative impact to users. You need to roll back the app to a previous version. What should you do?

- A. Restore the previous version of the app.
B. Uninstall the app for all users and reinstall by using the previous versions' package.
C. Deactivate the live app, import the previous version of the app, and then activate the app.
D. Delete the app and create a new app based on the previous version.

Answer: A

Explanation:

Restore a canvas app to a previous version in PowerApps. Restore an app from your account

- Open powerapps.com, and then click or tap Apps in the left navigation bar.
- Near the right edge, click or tap the info icon for the app that you want to restore.
- Click or tap the Versions tab, and then click or tap Restore for the version that you want to restore.
- In the confirmation dialog box, click or tap Restore.

A new version is added to your list. Reference:

<https://docs.microsoft.com/en-us/powerapps/maker/canvas-apps/restore-an-app>

NEW QUESTION 56

- (Exam Topic 3)

You create reports within Power BI to report on the status of a project. A manager asks you to share the reports with other team members. You decide to create a published app and set permissions to allow other team members to view the reports.

For each of the following statements, select Yes if the statement is true. Otherwise, select No. NOTE: Each correct selection is worth one point.

| Statement | Yes | No |
|--|-----------------------|-----------------------|
| The Power BI published app is stored within the Team site so that others can install it. | <input type="radio"/> | <input type="radio"/> |
| One of the other project managers installs and modifies a dashboard within the Power BI published app. The changes are automatically made into the original published app. | <input type="radio"/> | <input type="radio"/> |

- A. Mastered
- B. Not Mastered

Answer: A

Explanation:

Reference:

<https://docs.microsoft.com/en-us/power-bi/collaborate-share/service-create-distribute-apps>

NEW QUESTION 59

- (Exam Topic 3)

You need to display sales orders greater than a specific threshold in a Power BI report. What should you use?

- A. Common Data Service
- B. connector
- C. Power Query
- D. filter

Answer: D

NEW QUESTION 63

- (Exam Topic 3)

You are using Dynamics 365 Sales.

You need to pull data into a Power BI report for your team. The City and State columns must be combined to form one column on the report.

Which function would you use? Each correct answer presents a complete solution. NOTE: Each correct selection is worth one point.

- A. Use Power Query to merge columns.
- B. Import the data.18912E1457D5D1DDCBD40AB3BF70D5D
- C. Export data to Microsoft Excel.
- D. Create a view.

Answer: A

Explanation:

Reference:

<https://docs.microsoft.com/en-us/power-bi/desktop-shape-and-combine-data>

NEW QUESTION 67

- (Exam Topic 3)

A company plans to create an information portal that managers can use to view critical information about their teams.

You need to recommend the type of Power BI components that the company should use.

What should you recommend? To answer, drag the appropriate components to the correct requirements. Each component may be used once, more than once, or not at all. You may need to drag the split bar between panes or scroll to view content.

NOTE: Each correct selection is worth one point.

| Component types | Answer Area | |
|----------------------|---|---------------------------|
| | Requirement | Component type |
| <div>Dashboard</div> | | |
| <div>Report</div> | Display data from a Microsoft Excel workbook that has multiple worksheets into one chart. | <div>Component type</div> |
| | Display the top departmental goal metrics and alert users when specific thresholds targets are met. | <div>Component type</div> |
| | Display Sales charts that can be filtered by region. | <div>Component type</div> |

- A. Mastered
B. Not Mastered

Answer: A

Explanation:

Box 1: Report

Reports are more detailed data displayed in many formats like chart, graphs list and in tabular, etc. Box 2: Dashboard

Dashboards are a business key performance indicator view where it displays key values that can change business profits and can be glanced at one screen.

Box 3: Report

Power BI dashboards cannot slice and dice, but reports have many ways to filter and slice.

Note: Power BI dashboards are one placeholder to display the most important decision-making facts to run a business. But reports are more detailed data displayed in many formats like chart, graphs list and in tabular, etc. Reports are based on one dataset or one business unit data for example reports of a store belonging to California.

Reference:

<https://www.educba.com/power-bi-dashboard-vs-report/>

NEW QUESTION 68

- (Exam Topic 3)

You create a Power BI dashboard.

Match each option to its function. To answer, drag the appropriate option from the column on the left to its function on the right. Each option may be used once, more than once, or not at all.

NOTE: Each correct match is worth one point.

| Products | Answer Area | |
|---------------------|---|---------|
| | Requirement | Product |
| <div>Share</div> | | |
| <div>Embed</div> | Ensure that coworkers can see the dashboard. | |
| <div>Get Data</div> | Display data from Microsoft Excel in the dashboard. | |
| <div>Pin</div> | | |
| <div>Import</div> | Add a report tile to the dashboard. | |

- A. Mastered
B. Not Mastered

Answer: A

Explanation:

Reference:

<https://docs.microsoft.com/en-us/power-bi/service-set-data-alerts> <https://docs.microsoft.com/en-us/power-bi/service-analyze-in-excel> <https://docs.microsoft.com/en-us/power-bi/service-dashboard-pin-tile-from-report>

NEW QUESTION 71

- (Exam Topic 3)

A company is using Power BI to build visualizations.

The company's IT support team needs to know when to install Power BI Desktop on users' computers and where the Power BI Service will suffice to perform tasks.

You need to recommend solutions for the company.

What should you recommend? To answer, drag the appropriate components to the correct requirements. Each component may be used once, more than once, or not at all. You may need to drag the split bar between panes or scroll to view content.

NOTE: Each correct selection is worth one point.

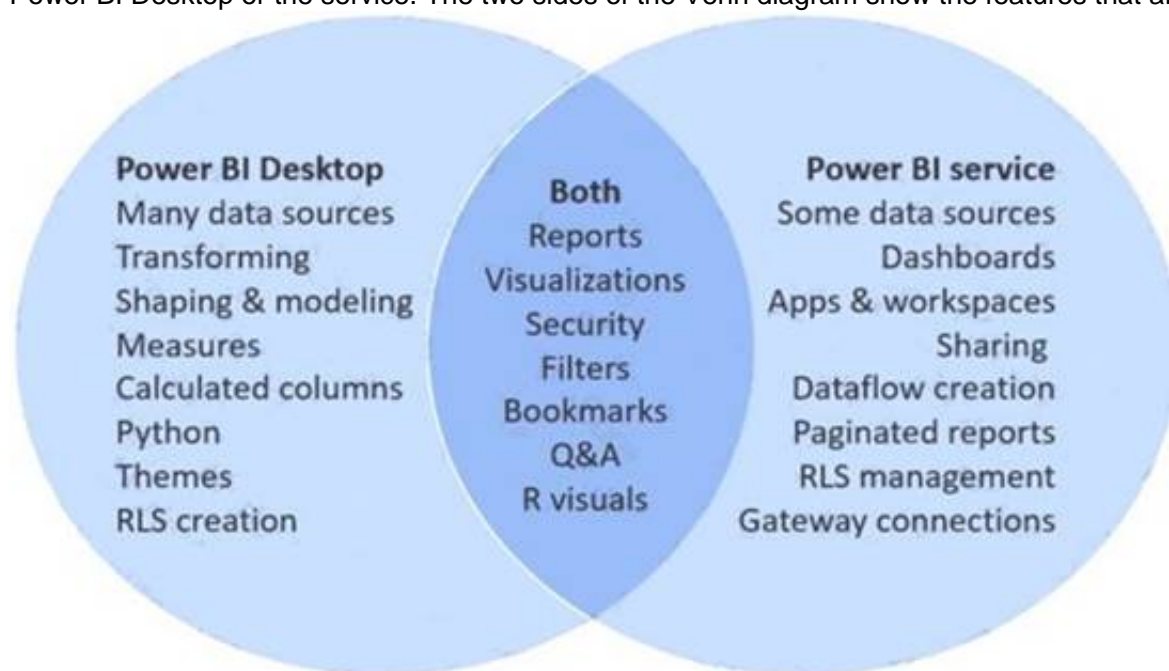
| Tools | Answer Area | |
|--------------------------------------|----------------------------|-----------|
| Power BI Service only | Requirement | Component |
| Power BI Desktop only | Create dashboards. | Tool |
| Power BI Desktop or Power BI Service | Create reports. | Tool |
| | Create calculated columns. | Tool |
| | Configure security. | Tool |
| | Configure sharing. | Tool |

- A. Mastered
B. Not Mastered

Answer: A

Explanation:

In a Venn diagram comparing Power BI Desktop and the Power BI service, the area in the middle shows how the two overlap. Some tasks you can do in either Power BI Desktop or the service. The two sides of the Venn diagram show the features that are unique to the application and the service.



Reference:
<https://docs.microsoft.com/en-us/power-bi/designer/service-service-vs-desktop>

NEW QUESTION 76

- (Exam Topic 3)

You have a Power BI report.

For each of the following statements, select Yes if the statement is true. Otherwise, select No. NOTE: Each correct selection is worth one point.

| Statement | Yes | No |
|---|-----------------------|-----------------------|
| You can export data from a visualization in a Power BI report. | <input type="radio"/> | <input type="radio"/> |
| You can show the data behind a visual report on your screen without exporting the data. | <input type="radio"/> | <input type="radio"/> |
| You must export data to view supporting data for a KPI. | <input type="radio"/> | <input type="radio"/> |

- A. Mastered
B. Not Mastered

Answer: A

Explanation:

Box 1: Yes

If you'd like to see the data that Power BI uses to create a visualization, you can display that data in Power BI. You can also export that data to Excel as an .xlsx or .csv file. The option to export the data requires a Pro or Premium license and edit permissions to the dataset and report.

Note: Export data from a Power BI dashboard

- > Select the ellipsis in the upper-right corner of the visualization.
- > Choose the Export data icon.
- > Power BI exports the data to a .csv file. If you've filtered the visualization, then the app will filter the downloaded data.
- > Your browser will prompt you to save the file. Once saved, open the .csv file in Excel.

Box 2: No

Underlying data: Select this option if you want to see the data in the visual and additional data from the model (see chart below for details). If your visualization has an aggregate, selecting Underlying data removes the aggregate. When you select Export, Power BI exports the data to an .xlsx file and your browser prompts you to save the file. Once saved, open the file in Excel.

Box 3: Yes

A KPI dataset needs to contain goal values for a KPI. If your dataset doesn't contain goal values, you can create them by adding an Excel sheet with goals to your data model or PBIX file.

Note: A Key Performance Indicator (KPI) is a visual cue that communicates the amount of progress made toward a measurable goal.

Reference:

<https://docs.microsoft.com/en-us/power-bi/visuals/power-bi-visualization-export-data> <https://docs.microsoft.com/en-us/power-bi/visuals/power-bi-visualization-kpi>

NEW QUESTION 79

- (Exam Topic 4)

A company plans to create a canvas app that connects to three databases with different proprietary database formats. What is the minimum number of connectors required?

- A. 1
- B. 2
- C. 3

Answer: B

Explanation:

Reference:

<https://docs.microsoft.com/en-us/powerapps/maker/canvas-apps/working-with-data-sources>

NEW QUESTION 84

- (Exam Topic 4)

You create a canvas app that allows contractors to submit time they work against a project.

Contractors must be able to use the canvas app to enter time. Contractors must not be able to perform any other actions in the app.

You need to configure permissions for the contractors. Which type of permissions should you use?

- A. application-level
- B. task-level
- C. record-level
- D. field-level

Answer: D

Explanation:

Field-level security feature to allow more granular control of security at the field level. Reference:

<https://docs.microsoft.com/en-us/power-platform/admin/security-roles-privileges> <https://docs.microsoft.com/en-us/power-platform/admin/wp-security-cds>

NEW QUESTION 88

- (Exam Topic 4)

A company uses Microsoft 365, Power Platform, and Dynamics 365. You do not assign permissions to any licensed users.

Users are able to create and edit Power Apps canvas apps.

In which environment are users creating and editing the apps?

- A. Production
- B. Default
- C. Sandbox

Answer: B

Explanation:

Reference:

<https://docs.microsoft.com/en-us/power-platform/admin/working-with-environments>

NEW QUESTION 91

- (Exam Topic 4) You are creating a canvas app. You need to configure the app.

Which two objects are provided by the connector? Each correct answer presents a complete solution.

NOTE: Each correct selection is worth one point.

- A. customizations
- B. data sources
- C. actions
- D. tables
- E. triggers

Answer: CD

Explanation:

Reference:

<https://docs.microsoft.com/en-us/powerapps/maker/canvas-apps/connections-list>

NEW QUESTION 96

- (Exam Topic 4)

A company is building a model-driven app.

You need to create and configure the objects needed for the app.

Which component categories should you use? To answer, drag the appropriate component categories to the correct objects. Each component category may be used once, more than once, or not at all. You may need to drag the split bar between panes or scroll to view content.

NOTE: Each correct selection is worth one point.

| Component categories | Answer Area | |
|----------------------|---------------|--------------------|
| | Object | Component category |
| UI | Relationship | |
| Data | Form | |
| Logic | Business rule | |
| Visulaization | View | |

- A. Mastered
- B. Not Mastered

Answer: A

Explanation:

Reference:

<https://docs.microsoft.com/en-us/powerapps/maker/model-driven-apps/model-driven-app-components>

NEW QUESTION 97

- (Exam Topic 4)

A company is considering implementing Power Platform.

For which three scenarios should you consider implementing Power Apps portals? Each correct answer presents a complete solution.

NOTE: Each correct selection is worth one point.

- A. a customer support website that includes knowledge search and support for document uploads
- B. a public website that supports multi-lingual communities with forums and blogs support
- C. an online store with e-commerce requirements including payment processing
- D. a secure website for vendors accessing data stored in Common Data Service
- E. an internal website for employees to access selected data from Dynamics 365 Finance

Answer: ABE

Explanation:

Reference:

<https://docs.microsoft.com/en-us/powerapps/maker/portals/portal-templates>

NEW QUESTION 99

- (Exam Topic 4)

You create a canvas app by using the Generate from data feature. The app connects to a Microsoft SharePoint list.

For each of the following statements, select Yes if the statement is true. Otherwise, select No. NOTE: Each correct selection is worth one point.

| Statement | Yes | No |
|--|-----------------------|-----------------------|
| A screen is generated that contains a browsable list of SharePoint list items. | <input type="radio"/> | <input type="radio"/> |
| A screen is generated that allows users to update SharePoint list items. | <input type="radio"/> | <input type="radio"/> |

- A. Mastered
- B. Not Mastered

Answer: A

Explanation:

Reference:

<https://docs.microsoft.com/en-us/powerapps/maker/canvas-apps/app-from-sharepoint>

NEW QUESTION 101

- (Exam Topic 4)

You create a Power Apps canvas app.

You need to ensure that your coworkers can run the app. What should you do?

- A. Share the app.
- B. Send the URL for the app to coworkers.
- C. Add a license for the app.
- D. Create a Flow for the app.

Answer: A

Explanation:

Reference:

<https://docs.microsoft.com/en-us/powerapps/maker/canvas-apps/share-app>

NEW QUESTION 104

- (Exam Topic 4)

A company publishes e-books for independent authors.

The company wants to implement a Power Apps portal solution to make announcements about upcoming books to the general public.

You need to recommend features for the company.

Which features should you use? To answer, select the appropriate options in the answer area. NOTE: Each correct selection is worth one point.

| Requirement | |
|--|---|
| Ensure that book authors can securely access their data. | <input type="checkbox"/> Authenticate external users. <input type="checkbox"/> Access data in Common Data Service. <input type="checkbox"/> Use page templates. <input type="checkbox"/> Browse content anonymously. |
| Ensure consistent page design across the website. | <input type="checkbox"/> Authenticate external users. <input type="checkbox"/> Access data in Common Data Service. <input type="checkbox"/> Use page templates. <input type="checkbox"/> Browse content anonymously. |
| Ensure that the public can access announcements about upcoming | <input type="checkbox"/> Authenticate external users. <input type="checkbox"/> Use page templates. <input type="checkbox"/> Browse content anonymously. |

- A. Mastered
- B. Not Mastered

Answer: A

Explanation:

Reference:

<https://www.onactuate.com/upgrades/what-is-the-new-powerapps-portal/>

<https://docs.microsoft.com/en-us/powerapps/maker/portals/configure/page-templates>

NEW QUESTION 106

- (Exam Topic 4)

A company is considering implementing PowerApps to help manage business processes. Users are trying to understand the purposes and benefits of PowerApps components.

Match each benefit to its tool. To answer, drag the appropriate benefit from the column on the left to its tool on the right. Each benefit may be used once, more than once, or not at all.

NOTE: Each correct selection is worth one point.

| Answer Area | | |
|----------------|--|----------------------|
| Tools | Benefit | Tool |
| connectors | Easy data integration | <input type="text"/> |
| canvas apps | Low code / no code across applications | <input type="text"/> |
| AI Builder | Easy to customize front end | <input type="text"/> |
| Power Automate | | |
| portals | | |

- A. Mastered
- B. Not Mastered

Answer: A

Explanation:

Reference:

<https://docs.microsoft.com/en-us/power-platform/admin/data-integrator> <https://powerapps.microsoft.com/en-us/blog/create-business-apps-using-powerapps-and-azure-functions/>

https://www.forbes.com/sites/adrianbridgwater/2019/06/17/microsoft-offers-premade-no-code-artificial-intelligence

NEW QUESTION 107

- (Exam Topic 4)

A company plans to build Power Apps portals.

For each of the following statements, select Yes if the statement is true. Otherwise, select No. NOTE: Each correct selection is worth one point.

| Statement | Yes | No |
|--|-----------------------|-----------------------|
| You must use standard templates for building portals. | <input type="radio"/> | <input type="radio"/> |
| You can test portals in non-prodcution environments and then migrate the portals into production environments. | <input type="radio"/> | <input type="radio"/> |
| When transitioning to the new version of a portal, you can display a customizable maintenance page until the new portal is ready to be used. | <input type="radio"/> | <input type="radio"/> |

- A. Mastered
- B. Not Mastered

Answer: A

Explanation:

Reference:

<https://docs.microsoft.com/en-us/powerapps/maker/portals/overview> <https://docs.microsoft.com/en-us/powerapps/maker/portals/admin/migrate-portal-configuration>
<https://docs.microsoft.com/en-us/powerapps/maker/portals/admin/enable-maintenance-mode>

NEW QUESTION 110

- (Exam Topic 4)

A company's customer-facing applications must comply with Global Data Protection Regulations (GDPR) regulations.

You need to recommend actions to help ensure GDPR compliance.

Which two features should the company use? Each correct answer presents part of the solution. NOTE: Each correct selection is worth one point.

- A. Prompt a user for consent to use their personal data and record the date consented.
- B. Automatically deactivate a user who has not used the portal in six months.
- C. Force a user to update security questions after a specific amount of time.
- D. Block users who are identified as minors.

Answer: AD

Explanation:

Reference: https://en.wikipedia.org/wiki/General_Data_Protection_Regulation

NEW QUESTION 111

- (Exam Topic 4)

You are designing a Power Apps solution that allows users to upload a status report directly to the company Microsoft SharePoint project management site from their mobile device.

For each of the following statements, select Yes it the statement is true. Otherwise, select No. NOTE: Each correct selection is worth one point.

| Statement | Yes | No |
|--|-----------------------|-----------------------|
| You should build a model-driven app in Power Apps. | <input type="radio"/> | <input type="radio"/> |
| You should build a canvas app in Power Apps. | <input type="radio"/> | <input type="radio"/> |
| Users must download and run the Power Apps mobile application to use the solution. | <input type="radio"/> | <input type="radio"/> |

- A. Mastered
- B. Not Mastered

Answer: A

Explanation:

Box 1: No

Box 2: Yes

Box 3: Yes

When you create an app, or someone shares an app with you, you can run that app on Windows, iOS, Android, or in a web browser.

References:

<https://docs.microsoft.com/en-us/powerapps/maker/canvas-apps/app-from-sharepoint> <https://docs.microsoft.com/en-us/powerapps/user/run-app-client>

NEW QUESTION 116

- (Exam Topic 5)

You build a flow using a template. You want to add support for additional business scenarios. You need to ensure that the new workflow does not break existing functionality.

Which flow editing utilities should you use? To answer, drag the appropriate tools to the correct requirements. Each tool may be used once, more than once, or not at all. You may need to drag the split bar between panes or scroll to view content.

NOTE: Each correct selection is worth one point.

| Tools | Answer Area | |
|-------------------------|--|-----------------|
| | Requirement | Tool |
| <div>Test</div> | | |
| <div>Flow Checker</div> | Check the new flow for any errors or warnings. | <div>Tool</div> |
| | Run the flow using previously processed data. | <div>Tool</div> |
| | Monitor the flow as it is running. | <div>Tool</div> |

- A. Mastered
- B. Not Mastered

Answer: A

Explanation:

Box 1: Flow Checker

The Flow checker feature will promote higher quality flows by ensuring you follow best practices. By running the checker, you will be able to get answers to questions like: which areas of my flow implementation pose a performance or reliability risk?

For each issue identified, the Flow checker points to specific occurrences within the flow where improvements may be required. And more importantly, you learn how to implement these improvements by following detailed guidance.

Box 2: Test

Box 3: Test Reference:

<https://flow.microsoft.com/en-us/blog/flow-checker-four-connectors/> <https://docs.microsoft.com/en-us/power-automate/modern-approvals>

NEW QUESTION 119

- (Exam Topic 5)

You need to use Microsoft Flow to perform data-management tasks when users interact with the sales opportunities in Dynamics 365.

Which three types of triggers can you use? Each correct answer presents a complete solution. NOTE: Each correct selection is worth one point.

- A. record requested
- B. record deletion
- C. record creation
- D. record updated
- E. record selected

Answer: BCD

Explanation:

Triggers like When a record is created, When a record is updated, and When a record is deleted initiate your flow within a few minutes of the event occurring. In rare cases, your flow can take up to 2 hours to trigger.

Reference:

<https://docs.microsoft.com/en-us/power-automate/connection-dynamics365>

NEW QUESTION 121

- (Exam Topic 5)

A company plans to implement Power Apps.

For each of the following statements, select Yes if the statement is true. Otherwise, select No. NOTE: Each correct selection is worth one point.

Answer Area

Statement

Yes

No

Building Power Apps apps requires proficiency in JavaScript programming.

☐
☐

You must select one of the app templates to create an app.

☐
☐

- A. Mastered
- B. Not Mastered

Answer: A

Explanation:

Reference:

<https://docs.microsoft.com/en-us/powerapps/maker/>

NEW QUESTION 124

- (Exam Topic 5)

You are new to working with Microsoft Flow. You create a flow that extracts birth dates for users and then sends a birthday greeting email to users on their birthday.

The flow does not properly extract birth dates. Where should you make changes?

- A. Connectors
- B. Expression
- C. Templates

Answer: A

Explanation:

Select the new Date Time connector. There you will see all of the actions, which help you to convert time zones to format them for local time in an email, add or subtract times, or just get the current time.

Reference:

<https://flow.microsoft.com/en-us/blog/nested-apply-to-each/>

NEW QUESTION 125

- (Exam Topic 5)

A company uses Dynamics 365 Supply Chain Management.

When a sales order is created for one of the customers that a specific user manages, a Microsoft Outlook task must be created to remind the user to perform any follow up activities that are required.

You need to implement the functionality to create Outlook tasks.

Which two features should you use? Each correct answer presents part of the solution. NOTE: Each correct selection is worth one point.

- A. AI Builder
- B. Power Apps
- C. Business Events
- D. Microsoft Flow
- E. Common Data Service

Answer: CD

Explanation:

Business events in Microsoft Power Automate

Business events can be consumed in Microsoft Power Automate via the application connector. The connector has a trigger that is named when a business event occurs. This trigger can be used to subscribe to any of the business events that are available in the target instance of the application.

Reference:

<https://docs.microsoft.com/en-us/dynamics365/fin-ops-core/dev-itpro/business-events/business-events-flow>

NEW QUESTION 126

- (Exam Topic 5)

A company plans to use Power Apps to connect to a series of custom services. There are no connectors available for the custom services.

For each of the following statements, select Yes if the statement is true. Otherwise, select No. NOTE: Each correct selection is worth one point.

| Statement | Yes | No |
|--|-----------------------|-----------------------|
| Custom connectors for customer-specific services do not require review and certification by Microsoft. | <input type="radio"/> | <input type="radio"/> |
| You can build a custom connector once and reuse the connector for Power Apps and Microsoft Flow. | <input type="radio"/> | <input type="radio"/> |
| You can make custom connectors publicly available for all Power Platform users without having Microsoft certify the connector. | <input type="radio"/> | <input type="radio"/> |

- A. Mastered
B. Not Mastered

Answer: A

Explanation:

Box 1: Yes

Only if you would like to share your connector with all users of Logic Apps, Microsoft Flow, and PowerApps, you can submit your connector for Microsoft certification. Microsoft will review your connector.

Box 2: Yes

Connectors created in Microsoft Flow are available in PowerApps. Likewise, connectors created in PowerApps are available in Microsoft Flow.

Box 3: No

If you would like to share your connector with all users of Logic Apps, Microsoft Flow, and PowerApps, you can submit your connector for Microsoft certification. Microsoft will review your connector.

Reference:

<https://docs.microsoft.com/en-us/connectors/custom-connectors/>

NEW QUESTION 130

- (Exam Topic 5)

You have a Power Automate flow that saves attachments from emails into OneDrive for Business. You need to determine why the flow is not working.

What are three possible ways to achieve the goal? Each correct answer presents a complete solution. NOTE: Each correct selection is worth one point.

- A. Navigate to the Power Automate web portal and click view notifications.
B. Enable Repair Tips for the flow.
C. Navigate to the Action Items section of the Power Automate portal.
D. Navigate to the Power Automate admin center and view the projects.
E. Navigate to the flow and view the run history.

Answer: ABE

Explanation:

Reference:

<https://docs.microsoft.com/en-us/power-automate/fix-flow-failures>

NEW QUESTION 133

- (Exam Topic 5)

A company builds and sells residential apartments. The company uses Dynamics 365 Sales to manage sales opportunities.

Management must receive notifications on their mobile devices when sales opportunities are created. You need to select recommend Power Platform components to address the requirements.

Which two components should you recommend? Each correct answer presents part of the solution. NOTE: Each selection is worth one point.

- A. Common Data Service connector
B. Power BI
C. Power Automate
D. AI Builder

Answer: AC

Explanation:

Reference:

<https://www.powerobjects.com/blog/2019/04/05/flow-approval-process/>

NEW QUESTION 137

- (Exam Topic 5)

A company plans to use Microsoft Flow to automate tasks.

Match each flow type to its function. To answer, drag the appropriate flow type from the column on the left to its description on the right. Each option may be used once, more than once, or not at all.

NOTE: Each correct match is worth one point.

| Flow types | Answer Area | |
|------------------|--|-----------|
| | Description | Flow type |
| automated | | |
| business process | a flow that runs after it is triggered by an event | Flow type |
| scheduled | a flow that guides a user through a set of tasks | Flow type |
| instant | a flow that runs after a specified number of days | Flow type |
| | a flow that allows you to start tasks on-demand | Flow type |

- A. Mastered
B. Not Mastered

Answer: A

Explanation:

Box 1: automated

Automated flows start with an event or trigger, such as an email being received. These also support a multitude of actions in the 200+ Flow connectors.

Box 2: business process

The business process flow that creates stages or screens that enforce a certain sequence of steps. It collects data from users for each step in the stage and can kick off automated workflows.

Box 3: scheduled

Scheduled flows run regular reports that are sent out to a team and summarize everything that's happened in the past week. This includes everything from simple daily scheduling to more complex scheduling like "every 3rd Monday."

Box 4: instant

An instant flow is triggered when you click a button inside of the Flow mobile app, SharePoint, Dynamics, PowerApps, or Excel that passes context directly into your flow.

Note: There are four different Flow types that you can choose from when starting out. You can create a scheduled flow, automated flow, instant flow, or a business process flow.

Reference:

<https://www.avepoint.com/blog/office-365/office-365-automation/>

NEW QUESTION 140

- (Exam Topic 5)

A company uses Dynamics 365 Sales. Every time an opportunity is created, a Power Automate flow runs to email the opportunity to the sales manager.

The sales manager leaves the company. You disable all accounts for the sales manager.

You need to ensure that the new sales manager automatically receives email about opportunities when they are created.

What should you do?

- A. Modify the flow and ensure that the correct manager's email is listed in the From field.
B. Modify the flow and ensure that the correct manager's email is listed in the To field.
C. Grant the new sales manager access to the departed sales manager's inbox.
D. Modify the flow and ensure that the flow prompts the user to type the correct email for the To field.
E. Create a flow that automatically forwards opportunity emails to the new sales manager.

Answer: E

Explanation:

Reference:

<https://www.inogic.com/blog/2020/09/power-automate-send-an-email-using-the-email-template-part-1/>

NEW QUESTION 141

- (Exam Topic 5)

A software company plans to use Power Automate.

For each of the following statements, select Yes if the statement is true. Otherwise, select No. NOTE: Each correct selection is worth one point.

| Statement | Yes | No |
|---|-----------------------|-----------------------|
| You must certify custom connectors before users in other departments within your organization can use the connectors. | <input type="radio"/> | <input type="radio"/> |
| You must use Microsoft Azure API apps to create a public custom connector. | <input type="radio"/> | <input type="radio"/> |

- A. Mastered
B. Not Mastered

Answer: A

Explanation:

Reference:

<https://docs.microsoft.com/en-us/connectors/custom-connectors/share>

NEW QUESTION 144

- (Exam Topic 5)

A company plans to synchronize data between Dynamics 365 Supply Chain management and Dynamics 365 Sales.

For each of the following statements, select Yes if the statement is true. Otherwise, select No. NOTE: Each correct selection is worth one point.

| Statement | Yes | No |
|--|-----------------------|-----------------------|
| You can implement a process-based integration by using the Data Integration feature. | <input type="radio"/> | <input type="radio"/> |
| You can use Microsoft Azure Data Migration to synchronize data between the apps. | <input type="radio"/> | <input type="radio"/> |

A. Mastered

B. Not Mastered

Answer: A

Explanation:

Reference:

<https://docs.microsoft.com/en-us/business-applications-release-notes/april19/cdm-data-integration/cds-data-integ>

NEW QUESTION 145

- (Exam Topic 5)

You plan to send an email notification to a user when a new file is placed in a specific folder in OneDrive for Business.

For each of the following statements, select Yes if the statement is true. Otherwise, select No. NOTE: Each correct selection is worth one point.

| Statement | Yes | No |
|--|-----------------------|-----------------------|
| You can create a flow without writing a single line of code and deploy the flow to a production environment. | <input type="radio"/> | <input type="radio"/> |
| You cannot add additional actions to the built-in Power Automate templates. | <input type="radio"/> | <input type="radio"/> |
| You can view the code that implements workflow actions and triggers without installing additional software. | <input type="radio"/> | <input type="radio"/> |

A. Mastered

B. Not Mastered

Answer: A

Explanation:

Reference:

<https://docs.microsoft.com/en-us/power-automate/getting-started> <https://docs.microsoft.com/en-us/power-automate/multi-step-logic-flow>

NEW QUESTION 148

- (Exam Topic 5)

This question requires that you evaluate the BOLD text to determine if it is correct.

A company requires that service representatives schedule customer visits every six months. Each service representative is required to enter a scheduled task for the next checkup as they are leaving a client site. A service representative wants to automate task entry by creating a business process flow that can be initiated from the service call screen on a phone.

Review the underlined text. If it makes the statement correct, select “No change is needed.” If the statement is incorrect, select the answer choice that makes the statement correct.

A. No change is needed.

B. a scheduled

C. an instant

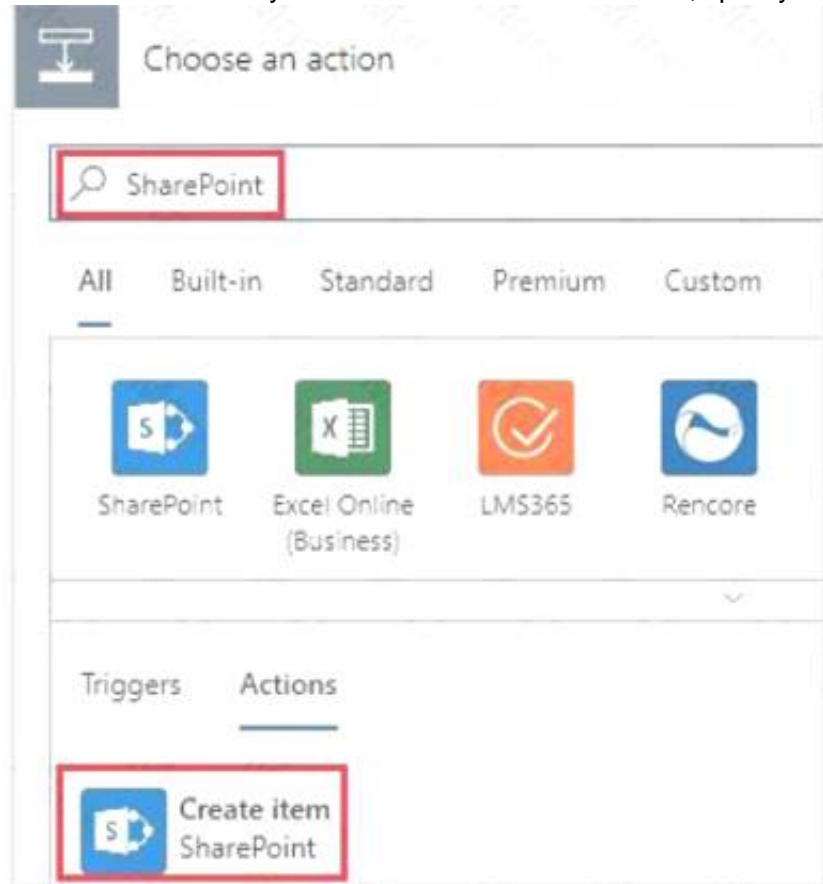
D. an action

Answer: D

Explanation:

Note: Create a flow (see step 6 below)

- * 1. Sign in to PowerApps.
 - * 2. In the left navigation bar, select Business logic, and then select Flows.
 - * 3. In the upper-left corner of the My Flows page, select New, and then select Create from blank.
 - * 4. Option to create a flow without using a template
- Near the bottom of the page that appears, select Search hundreds of connections and triggers.
- * 5. In the search box, type PowerApps, and then select the PowerApps icon.
 - * 6. Create a PowerApps trigger
 - * 7. On the next page, select the PowerApps icon again, and then select New step.
 - * 8. In the box that says Search connectors and actions, specify an action for your flow, as in this example:



Reference:

<https://docs.microsoft.com/en-us/powerapps/maker/canvas-apps/using-logic-flows>

NEW QUESTION 153

- (Exam Topic 6)

You are creating a Power Virtual Agents chatbot to help users search for available meeting rooms within a building. The chatbot must meet the following requirements:

- Allow users to initiate the chatbot by typing the phrase Help me Meeting Guru.
- Provide meeting room capacity options of 1-4 people and 5-10 people.
- End the chatbot session if the user attempts to schedule a meeting room for more than 10 people. You need to identify the actions to use.

Which actions should you use? To answer, select the appropriate options in the answer area.

NOTE: Each correct selection is worth one point.

| Requirement | Action |
|--|--|
| Allow users to initiate the chatbot by typing the phrase Help me Meeting Guru . | <div><div></div><div>Call a fallback topic.</div><div>Call an action.</div><div>Create a question node.</div><div>Create a trigger phrase.</div></div> |
| Provide meeting room capacity options of 1-4 people and 5-10 people. | <div><div></div><div>Call an action.</div><div>Call a fallback topic.</div><div>Create a condition.</div><div>Create a question node.</div></div> |
| End the chatbot session when the user attempts to schedule meeting room for more than 10 people. | <div><div></div><div>Add a condition.</div><div>Call an action.</div><div>Configure a fallback topic.</div><div>Create a trigger phrase.</div></div> |

- A. Mastered
- B. Not Mastered

Answer: A

Explanation:

Graphical user interface, text, application, email Description automatically generated

Reference:

<https://docs.microsoft.com/en-us/power-virtual-agents/authoring-create-edit-topics>

NEW QUESTION 155

- (Exam Topic 6)

You are developing a Power Virtual Agents chatbot for a company.

For each of the following statements, select Yes if the statement is true. Otherwise, select No.

NOTE: Each correct selection is worth one point.

| Statement | Yes | No |
|--|-----------------------|-----------------------|
| You must create a topic to specify how a chatbot responds to a user. | <input type="radio"/> | <input type="radio"/> |
| You can use prebuilt entities or custom defined entities. | <input type="radio"/> | <input type="radio"/> |

- A. Mastered
- B. Not Mastered

Answer: A

Explanation:

Graphical user interface, text, application Description automatically generated

Reference:

<https://docs.microsoft.com/en-us/power-virtual-agents/authoring-fundamentals> <https://docs.microsoft.com/en-us/power-virtual-agents/advanced-entities-slot-filling>

NEW QUESTION 159

- (Exam Topic 6)

You are creating a Power Virtual Agents chatbot for a company.

Which component types should you use for each scenario? To answer, select the appropriate options in the answer area.

NOTE: Each correct selection is worth one point.

| Scenario | Component type |
|---|--|
| The chatbot needs to capture of the user id for authentication. | <div>Topic Entity Action</div> |
| A customer asks a question that needs to be handed off to a live Customer Support representative. | <div>Topic Entity Action</div> |

- A. Mastered
- B. Not Mastered

Answer: A

Explanation:

Graphical user interface, application Description automatically generated

Reference:

<https://docs.microsoft.com/en-us/power-virtual-agents/fundamentals-what-is-power-virtual-agents> <https://www.c-sharpcorner.com/article/get-started-with-bot-development-with-microsoft-power-virtual-agent-ste>

NEW QUESTION 160

- (Exam Topic 6)

You are planning to allow members of your team to test your chatbot. You must ensure this is done in a secure way.

A team member named User1 must test the chatbot. You need to ensure that User1 can complete testing. What should you do?

- A. Sign in to the authoring environment as the chatbot author.
- B. Sign in to Microsoft Azure DevOps as the chatbot author.
- C. Sign in to Microsoft Azure DevOps as User1.
- D. Sign in to the authoring environment as User1.

Answer: A

NEW QUESTION 164

- (Exam Topic 7)

A company uses Microsoft 365, Power Platform, and Dynamics 365. You do not assign permissions to any licensed users.

Users are able to create and edit Power Apps canvas apps.

In which environment are users creating and editing the apps?

- A. Production
- B. Test
- C. Sandbox

Answer: B

NEW QUESTION 166

- (Exam Topic 7)

A business uses a form to collect information. You create a business process flow for the form. The top of the form must display where the user is in the process.

You need to identify what to configure at the top of the form. What should you identify?

- A. Step
- B. Stage
- C. Branch
- D. Workflow

Answer: B

NEW QUESTION 170

- (Exam Topic 7)

A company uses Dynamics 365 Supply Chain Management.

When a sales order is created for one of the customers that a specific user manages, a Microsoft Outlook task must be created to remind the user to perform any follow up activities that are required.

You need to implement the functionality to create Outlook tasks. Which feature should you use?

- A. Power Automate
- B. AI Builder
- C. Power BI
- D. Business Events
- E. Common Data Service

Answer: A

NEW QUESTION 175

- (Exam Topic 7)

A company uses a model-driven app for their mobile sales activities.

The company wants to modify the view that is used for sales orders. You must apply a new default filter to the view. You must also modify the default sorting for sales orders.

You need to make the changes to the view.

In which three locations can you make the changes? Each correct answer presents a complete solution.

NOTE: Each correct selection is worth one point.

- A. Power Apps site
- B. Solution Explorer
- C. Microsoft Azure DevOps
- D. App Designer

Answer: ACD

Explanation:

You can edit or remove a filter condition through the Power Apps site. You can create and edit Analytics views in Azure DevOps.

An alternative to editing views in the tables is to edit views from the app designer. Reference:

<https://docs.microsoft.com/en-us/powerapps/maker/model-driven-apps/create-edit-view-filters> <https://docs.microsoft.com/en-us/azure/devops/report/powerbi/analytics-views-create>

<https://docs.microsoft.com/en-us/powerapps/maker/model-driven-apps/create-edit-views-app-designer>

NEW QUESTION 177

- (Exam Topic 7)

Instructions: For each of the following statements, select Yes if the statement is true. Otherwise, select No. NOTE: Each correct selection is worth one point.

Answer Area

| Statements | Yes | No |
|--|-----------------------|-----------------------|
| Stages are added under each step of a business process flow design. | <input type="radio"/> | <input type="radio"/> |
| Power Automate desktop flows can be used to copy a file to a folder on your local machine. | <input type="radio"/> | <input type="radio"/> |
| Power Automate flows can be copied to a separate solution for export to another environment. | <input type="radio"/> | <input type="radio"/> |

- A. Mastered
B. Not Mastered

Answer: A

Explanation:

Answer Area

| Statements | Yes | No |
|--|----------------------------------|-----------------------|
| Stages are added under each step of a business process flow design. | <input checked="" type="radio"/> | <input type="radio"/> |
| Power Automate desktop flows can be used to copy a file to a folder on your local machine. | <input checked="" type="radio"/> | <input type="radio"/> |
| Power Automate flows can be copied to a separate solution for export to another environment. | <input checked="" type="radio"/> | <input type="radio"/> |

NEW QUESTION 180

- (Exam Topic 7)

You are using Power Virtual Agents to create a chatbot for your Power Apps portal.

You need the chatbot to start from the beginning of the conversation if user input is unrecognized. What should you configure?

- A. Trigger
B. Error message
C. Fallback topic
D. At features

Answer: C

NEW QUESTION 181

- (Exam Topic 7)

A company is evaluating ways to connect Power Platform apps to external services to perform complex activities. For each of the following statements, select Yes if the statement is true. Otherwise, select No. NOTE: Each correct selection is worth one point.

Answer Area

| Statement | Yes | No |
|--|-----------------------|-----------------------|
| You can create a canvas app that scans and parses documents using Azure Cognitive Services and then adds the appropriate information to Dynamics 365 Sales. | <input type="radio"/> | <input type="radio"/> |
| You can create a canvas app that uses Azure Cognitive Services to read incident records and identify tickets that need to be escalated based on sentiment score. | <input type="radio"/> | <input type="radio"/> |

- A. Mastered
B. Not Mastered

Answer: A

Explanation:

Yes Yes

NEW QUESTION 183

- (Exam Topic 7)

You develop a Power Virtual Agents chatbot in a Microsoft Teams channel named Expenses. You need to identify the operations the chatbot can perform. Which two actions can the chatbot perform? Each correct answer presents a complete solution. NOTE: Each correct selection is worth one point.

- A. Transfer a chat to a live person if the chatbot cannot answer the question.
- B. Staff who are not members of the Expenses team can use the chatbot.
- C. Trigger a request for approval from a senior manager for high-value expenses.
- D. Upload and process a PDF file.

Answer: AC

NEW QUESTION 184

- (Exam Topic 7)

A team of five people plans to create Power Platform solutions for a company. Team member plan to initially use Power Platform trial instances to create solutions. Team members have questions about how many Power Platform instances and Common Data Service databases they need. You need to respond to the team. How should you respond? To answer, drag the appropriate responses to the correct questions. Each response may be used once, more than once, or not at all. You may need to drag the split bar between panes or scroll to view content

Responses

One per user

One per tenant

One per environment

One per Power Platform app

Answer Area

| Question | Response |
|--|---------------------|
| How many trial instances must the team create? | <div>Response</div> |
| How many Microsoft Dataverse databases must the team create? | <div>Response</div> |

- A. Mastered
- B. Not Mastered

Answer: A

Explanation:

Graphical user interface, text, application, Word, email Description automatically generated

NEW QUESTION 189

- (Exam Topic 7)

You are creating a Power Automate solution. You need to select a Power Automate control action for each function in the flow. Which control action should you use? To answer, drag the appropriate control actions to the correct functions. Each control action may be used once, more than once, or not at all. You may need to drag the split bar between panes or scroll to view content. NOTE: Each correct selection is worth one point.

Answer Area

| Control actions | Function | Control action |
|--------------------------|---|----------------|
| <div>Do until</div> | Continue performing a set of actions unless a condition becomes true. | <div></div> |
| <div>Apply to each</div> | Allow multiple branches to be created based on a set of options. | <div></div> |
| <div>Switch</div> | Allow two branches to be created based on a true/false condition. | <div></div> |
| <div>Condition</div> | | |

- A. Mastered
- B. Not Mastered

Answer: A

Explanation:

Graphical user interface, text, application Description automatically generated

NEW QUESTION 193

- (Exam Topic 7)
A company is implementing Power BI to track sales.
Each of the company’s regions has specific quarterly and yearly sales goals. You need to build a Power BI dashboard for various reporting requirements.
Which chart types should you use? To answer, drag the appropriate chart types to the correct requirements.
Each chart type may be used once, more than once, or not at all. You may need to drag the split bar between panes or scroll to view content.
NOTE: Each correct selection is worth one point.

| Chart types | Requirement | Chart type |
|-------------|--|------------|
| Donut | Show the quarterly sales total to date in relation to the sales goal. | |
| KPIs | View the sales trend by month of the sales year to date for all regions. | |
| Line chart | View the year-to-date sales as a percentage by region. | |
| Matrix | | |

- A. Mastered
- B. Not Mastered

Answer: A

Explanation:
Box 1: KPIs
A Key Performance Indicator (KPI) is a visual cue that communicates the amount of progress made toward a measurable goal.
Box 2: Line chart
Line charts emphasize the overall shape of an entire series of values, usually over time. Box 3: Donut
Doughnut charts are similar to pie charts. They show the relationship of parts to a whole. The only difference is that the center is blank and allows space for a label or icon.
Reference:
<https://docs.microsoft.com/en-us/power-bi/visuals/power-bi-visualization-types-for-reports-and-q-and-a>

NEW QUESTION 197

- (Exam Topic 7)
A company is creating a canvas app to manage weekly status reports from users about projects.
Status reports must be created weekly. Users can enter project tasks with descriptions. Users can also add escalation requests for tasks that are late or at risk.
When a status report is submitted with an escalation request the app must automatically send a text message to the submitter's manager. A reminder must be sent at 8 PM on Sunday to everyone who has not yet submitted a status report for the previous week.
You need to identify the appropriate components to use in the solution.
What should you use? To answer, drag the appropriate implementation mechanisms to the correct requirements. Each implementation mechanism may be used once, more than once, or not at all. You may need to drag the split bar between panes or scroll to view content
NOTE: Each correct selection is worth one point

| Implementation Mechanisms | Action | Implementation Mechanism |
|---------------------------|---|--------------------------|
| Actions | Automatically send a text message based on the report submission. | |
| Triggers | Automatically send a reminder at 8 PM based on a missing status report. | |
| Conditions | | |
| Business process flows | | |

- A. Mastered
- B. Not Mastered

Answer: A

Explanation:



NEW QUESTION 202

- (Exam Topic 7)

A company is implementing Power Automate to streamline operations.

The head of customer support relations needs a Power Automate flow that texts a manager when an email meets the following criteria:

- The email is sent as high priority.
- The email is from a customer.

You need to identify how the flow's decision point will know whether the criteria are met. What should you use?

- A. data operations
- B. expressions
- C. variables
- D. actions
- E. triggers

Answer: C

NEW QUESTION 204

- (Exam Topic 7)

A company is building apps to support their business operations. The apps will use connectors to access data from several data sources and respond to a number of events generated by components.

Which two operations can you use for connectors? Each correct answer presents part of the solution. NOTE: Each correct selection is worth one point.

- A. Triggers
- B. Plug-ins
- C. Actions
- D. Gateways

Answer: CD

NEW QUESTION 209

- (Exam Topic 7)

An organization plans to create Power Platform solutions and is evaluating Microsoft Dataverse. Instructions: For each of the following statements, select Yes if the statement is true. Otherwise, select No. NOTE: Each correct selection is worth one point.

| | Yes | No |
|--|-----------------------|-----------------------|
| Virtual table data is stored in Microsoft Dataverse. | <input type="radio"/> | <input type="radio"/> |
| Columns are used in forms and views. | <input type="radio"/> | <input type="radio"/> |

- A. Mastered
- B. Not Mastered

Answer: A

Explanation:

Graphical user interface, text Description automatically generated with medium confidence

Box 1: No

A virtual table is a definition of a table in the Dataverse platform without the associated physical tables for table instances created in the Dataverse database. Instead during runtime, when a table instance is required, its state is dynamically retrieved from the associated external system.

Box 2: Yes

Columns in forms: In the form designer, drag any columns from the Columns Explorer into the section on the form.

Reference:

<https://docs.microsoft.com/en-us/powerapps/developer/data-platform/virtual-entities/get-started-ve>

NEW QUESTION 210

- (Exam Topic 7)

A company uses a model-driven app for its sales team.

You must customize a form to meet the following requirements:

- If a check box is checked, a hidden field must appear.
- The form must display a list of customers and fields about customers.

You need to identify the components a developer must configure to meet the requirements. What should you identify?

Components

Column

View

Form

Table

Answer Area

Requirement

Hidden field appears

List of customers and fields displays

Component

Component

Component

- A. Mastered
B. Not Mastered

Answer: A

Explanation:
Form Table

NEW QUESTION 215

- (Exam Topic 7)

A company is creating a chatbot to replace a frequently asked questions (FAQ) site

You must perform step-by-step testing for all scenarios that are part of a complex user interaction that includes multiple topics. Testers must be able to see the workflow while interacting with the chatbot.

You need to test the chatbot. What should you do?

- A. Publish the chatbot and test it in the demo website.
B. Use the chatbot designer to test the chatbot
C. View analytics for a chatbot conversation.
D. Publish the chatbot and test it in any channel

Answer: B

Explanation:

Test and maintain chatbots through an incredibly easy-to-use graphical interface. Recognize and act on dozens of common entities in the user's conversation such as colors, currencies, ages, dates and times, or create your own, and store user information in variables and use them to branch or create complex conversations.

<https://powervirtualagentsblogcdn.azureedge.net/wp-content/uploads/2019/11/Tracking.png>

NEW QUESTION 220

- (Exam Topic 7)

For each of the following statements, select Yes if the statement is true. Otherwise, select No.
NOTE: Each correct selection is worth one point.

| Statement | Yes | No |
|---|-----------------------|-----------------------|
| You can embed a canvas app in a Microsoft Forms form to collect user feedback. | <input type="radio"/> | <input type="radio"/> |
| You can embed a canvas app within a Microsoft Excel worksheet to allow users to interact with data in a structured way. | <input type="radio"/> | <input type="radio"/> |
| You can embed a canvas app within a Power Platform model-driven app. | <input type="radio"/> | <input type="radio"/> |

- A. Mastered
B. Not Mastered

Answer: A

Explanation:

Box 1: Yes

With embedded canvas apps, makers can bring the power of canvas apps to their model-driven forms. Using embedded canvas apps, it is possible to create rich visual areas on a form and display data from a variety of sources right next to data from Microsoft Dataverse.

Box 2: No

Box 3: Yes Reference:

<https://docs.microsoft.com/en-us/powerapps/maker/model-driven-apps/embed-canvas-app-in-form>

NEW QUESTION 224

- (Exam Topic 7)

You need to explain the major components of the Common Data Model (CDM) and their functions. Match each term to its definition.

Instructions: To answer, drag the appropriate term from the column on the left to its definition on the right. Each term may be used once, more than once, or not at all. Each correct match is worth one point.

NOTE: Each correct selection is worth one point.

Tools

Entities

Common Data Service

Workflows

Data connectors

Common Data Model

Answer Area

Purpose

Helps jumpstart application development by leveraging business logic, security, and integrations

A set of records used to store data

Tool

- A. Mastered
B. Not Mastered

Answer: A

Explanation:

Tools

Entities

Common Data Service

Workflows

Data connectors

Common Data Model

Answer Area

Purpose

Helps jumpstart application development by leveraging business logic, security, and integrations

A set of records used to store data

Tool

Common Data Service

Entities

NEW QUESTION 225

- (Exam Topic 7)

You plan to use Power Automate to monitor what people are saying about your company's products. You store the feedback for research and development purposes.

You need to recommend Power Automate components to use for the solution.

To answer drag the appropriate components to the correct requirements. Each component may be used once, more than once, or not at all. You may need to drag the split Car between panes or scroll to view content.

NOTE: Each correct selection is worth one point

| Components | Requirement | Component |
|------------|--|-----------|
| action | Retrieve the top five posts from your company's Facebook page. | Component |
| expression | Enter the resulting posts into the product database. | Component |
| service | Combine author and link fields into a single field. | Component |
| trigger | Run a flow every hour. | Component |

- A. Mastered
B. Not Mastered

Answer: A

Explanation:

| Components | Requirement | Component |
|------------|--|------------|
| action | Retrieve the top five posts from your company's Facebook page. | action |
| expression | Enter the resulting posts into the product database. | action |
| service | Combine author and link fields into a single field. | expression |
| trigger | Run a flow every hour. | trigger |

NEW QUESTION 227

- (Exam Topic 7)

You are using the Power BI service to view a visual on a report that has been shared with you. You need to add the visual to a dashboard as a tile. Which action should you perform?

- A. Copy
B. Spotlight
C. Export data
D. Pin

Answer: D

NEW QUESTION 232

- (Exam Topic 7)

You are creating a Power Automate flow.

The flow must read each item in a Microsoft SharePoint list that details sales opportunities and set the value for a field named Status to Overdue if the value of a field named Follow up is less than or equal to the current date.

You need to select the appropriate component to cycle through the entire list. Which component should you use?

- A. Connector
B. Action
C. Trigger
D. Condition

Answer: D

Explanation:

Reference:

<https://docs.microsoft.com/en-us/power-automate/use-expressions-in-conditions>

NEW QUESTION 236

- (Exam Topic 7)

You are building Power BI visualizations for a team.

For each of the following statements, select Yes if the statement is true. Otherwise, select No. NOTE: Each correct selection is worth one point.

| Statement | Yes | No |
|--|-----------------------|-----------------------|
| Power BI can only retrieve data from up to two different sources for each dashboard. | <input type="radio"/> | <input type="radio"/> |
| Power BI visualizations can be used in canvas apps and model driven apps. | <input type="radio"/> | <input type="radio"/> |
| Power BI can display charts and list boxes on dashboards. | <input type="radio"/> | <input type="radio"/> |

- A. Mastered

B. Not Mastered

Answer: A

Explanation:

Yes

Yes Yes

NEW QUESTION 239

- (Exam Topic 7)

You are authoring a Power Virtual Agents bot for a company that sells flowers and shrubs.

For each of the following statements, select Yes if the statement is true. Otherwise, select No.

NOTE: Each correct selection is worth one point.

| Statement | Yes | No |
|---|-----------------------|-----------------------|
| You can use the prebuilt Postal Code entity to recommend plants that will work within a customer's growing zone. | <input type="radio"/> | <input type="radio"/> |
| You can create a custom entity to offer color and plant choices for landscaping options that can be made available for customer orders. | <input type="radio"/> | <input type="radio"/> |

A. Mastered

B. Not Mastered

Answer: A

Explanation:

Box 1: Yes

Chatbots built with Power Virtual Agents will understand and display content that's locally relevant to the user. Localized handling and formatting are based on the user's browser locale setting, and include the following elements within a chat conversation:

- > Date and time
- > Numbers
- > ZIP or postal code
- > Currency
- > Speed

Box 2: Yes

Custom entities:

The prebuilt entities cover commonly used information types, but on some occasions, such as when building a bot that serves a specific purpose, you'll need to teach the bot's language understanding model some domain-specific knowledge.

For instance, let's say you want to build a bot for an outdoor store. In this case, you'll need to teach the bot to acknowledge the "outdoor gears product" category in a dialog.

Reference:

<https://docs.microsoft.com/en-us/power-virtual-agents/data-location> <https://docs.microsoft.com/en-us/power-virtual-agents/advanced-entities-slot-filling>

NEW QUESTION 240

- (Exam Topic 7)

You are creating a canvas app to enable users to order tickets. You create an input field for users to input the number of tickets to order.

Users must order a maximum of four tickets and a minimum of two tickets. If a user enters a number except 2, 3, or 4, the input field must display in red. If a user enters the numbers 2, 3, or 4, the input field must display in green.

You need to color the input field based on the user input. What should you use?

- A. formula
- B. calculated column
- C. gallery
- D. connector

Answer: A

NEW QUESTION 245

- (Exam Topic 7)

For each of the following statements, select Yes if the statement is true, Otherwise, select No. NOTE: Each correct selection is worth one point.

| Statement | Yes | No |
|--|-----------------------|-----------------------|
| Power Apps apps can run only on mobile devices. | <input type="radio"/> | <input type="radio"/> |
| Power Apps can run only with Dynamic 365 products. | <input type="radio"/> | <input type="radio"/> |
| If a user runs a Power Apps app that accesses information to which the user does not have access, the app grants the user permissions. | <input type="radio"/> | <input type="radio"/> |

- A. Mastered
- B. Not Mastered

Answer: A

Explanation:

| Answer Area | |
|--|--|
| Statement | <div>YesNo</div> |
| Power Apps apps can run only on mobile devices. | <div><div></div><div><input checked="" type="radio"/></div></div> |
| Power Apps can run only with Dynamic 365 products. | <div><div></div><div><input checked="" type="radio"/></div></div> |
| If a user runs a Power Apps app that accesses information to which the user does not have access, the app grants the user permissions. | <div><div><input checked="" type="radio"/></div><div><input type="radio"/></div></div> |

NEW QUESTION 249

- (Exam Topic 7)

You are a sales manager for a large retail organization.
You are creating a Power Apps app that will display customer product purchase information from your old point-of-sale (POS) system and need to link those sales to the customer accounts and product sales in Dynamics 365 Commerce.
You need to use the appropriate component. What should you use?

- A. business process flow
- B. business rule
- C. Common Data Service
- D. entity metadata

Answer: C

NEW QUESTION 254

- (Exam Topic 7)

A company plans to implement Power BI.
The company wants to implement some specific features that Power BI does not include. You need to recommend solutions for the company.
What should you recommend? To answer, drag the appropriate solutions to the correct requirement. Each solution may be used once, more than once, or not at all. You may need to drag the split bar between panes or scroll to view content.
NOTE: Each correct selection is worth one point.

| Solutions | Answer Area | |
|---|-------------|--|
| <div>Microsoft AppSource</div> | <div></div> | |
| <div>Microsoft Lifecycle Services</div> | | |
| <div>Microsoft Azure Marketplace</div> | | |

| Requirement | Solution |
|--|---------------------|
| Evaluate solutions that meet current gaps in Power BI capabilities. | <div>Solution</div> |
| Evaluate the services of multiple companies to identify a partner that can assist in building a proof-of-concept solution. | <div>Solution</div> |

- A. Mastered
- B. Not Mastered

Answer: A

Explanation:

| Solutions | Answer Area | |
|---|-------------|--|
| <div>Microsoft AppSource</div> | <div></div> | |
| <div>Microsoft Lifecycle Services</div> | | |
| <div>Microsoft Azure Marketplace</div> | | |

| Requirement | Solution |
|--|--------------------------------|
| Evaluate solutions that meet current gaps in Power BI capabilities. | <div>Microsoft AppSource</div> |
| Evaluate the services of multiple companies to identify a partner that can assist in building a proof-of-concept solution. | <div>Microsoft AppSource</div> |

NEW QUESTION 258

- (Exam Topic 7)

A company plans to implement Power BI.
Instructions: For each of the following statements, select Yes if the statement is true. Otherwise, select No. NOTE: Each correct selection is worth one point.

Answer Area

| Statements | Yes | No |
|--|-----------------------|-----------------------|
| Power BI Report Builder is the only tool used to create reports to be published to the Power BI service. | <input type="radio"/> | <input type="radio"/> |
| Power BI service can include calculated columns. | <input type="radio"/> | <input type="radio"/> |
| Power BI Desktop can include calculated columns. | <input type="radio"/> | <input type="radio"/> |

- A. Mastered
B. Not Mastered

Answer: A

Explanation:

Answer Area

| Statements | Yes | No |
|--|----------------------------------|----------------------------------|
| Power BI Report Builder is the only tool used to create reports to be published to the Power BI service. | <input type="radio"/> | <input checked="" type="radio"/> |
| Power BI service can include calculated columns. | <input type="radio"/> | <input checked="" type="radio"/> |
| Power BI Desktop can include calculated columns. | <input checked="" type="radio"/> | <input type="radio"/> |

NEW QUESTION 262

- (Exam Topic 7)

You create a model-driven app. You need to determine which customization can be made to table forms.

| Statements | Yes | No |
|---|-----------------------|-----------------------|
| A form can be made visible only to users who have been assigned a specific security role. | <input type="radio"/> | <input type="radio"/> |
| The label of a column on a form can be different than the column display name. | <input type="radio"/> | <input type="radio"/> |
| You can edit the system view named Quick Find to change the title and subtitle displayed for records in a look-up column. | <input type="radio"/> | <input type="radio"/> |

- A. Mastered
B. Not Mastered

Answer: A

Explanation:

Graphical user interface, text, application, email Description automatically generated

NEW QUESTION 265

- (Exam Topic 7)

A company uses Microsoft 365, SharePoint Online, and Dynamics 365 Sales.

You need to recommend tools to build a solution that meets the following requirements:

- Synchronize data daily (rom an external Microsoft SQL Server instance.
- Send a report automatically to specific company executives.
- Ensure that opportunities over a specified amount are approved by a sales manager.

Which two tools of components should you recommend? Each correct answer presents pan of the solution NOTE: Each correct selection is worth one point.

- A. Microsoft Word
B. Common Data Service
C. Power Automate
D. Microsoft Excel
E. Power BI

Answer: BC

NEW QUESTION 267

- (Exam Topic 7)

A company is implementing a customer service solution by using Dynamics 365 Customer Service. The company is extending the solution to meet additional business requirements.

The solution has the following requirements:

- Customers can log on to a secure website and view the progress of customer service tickets.
- Refund requests over a certain value can be automatically sent for managerial approval in Microsoft Teams.
- Create a custom page showing a gallery of pictures within the Dynamics 365 Customer Service app. You need to use Microsoft Power Platform technologies to implement the solution.

Which technology should you use? To answer, drag the appropriate technologies to the correct requirements. Each technology may be used once, more than once, or not at all. You may need to drag the split bar between panes or scroll to view content.

NOTE: Each correct selection is worth one point.

| Technologies | | Requirement | Technology |
|--------------------|--|--|------------|
| Power Apps portals | | Customers can log on to a secure website and view the progress of customer service tickets. | |
| Power Automate | | Refund requests over a certain value can be automatically sent for managerial approval in Microsoft Teams. | |
| Canvas apps | | Create a custom page showing a gallery of pictures within the Dynamics 365 Customer Service app. | |

- A. Mastered
- B. Not Mastered

Answer: A

Explanation:

| Technologies | | Requirement | Technology |
|--------------------|--|--|--------------------|
| Power Apps portals | | Customers can log on to a secure website and view the progress of customer service tickets. | Power Apps portals |
| Power Automate | | Refund requests over a certain value can be automatically sent for managerial approval in Microsoft Teams. | Power Automate |
| Canvas apps | | Create a custom page showing a gallery of pictures within the Dynamics 365 Customer Service app. | Canvas apps |

NEW QUESTION 269

- (Exam Topic 7)

A company plans to build solutions by using Power Platform technologies.

For each of the following statements, select Yes if the statement Is true. Otherwise, select No. NOTE: Each correct selection is worth one point.

| Statement | Yes | No |
|--|-----------------------|-----------------------|
| Power Virtual Agents chat data is saved unless it is deleted by the customer after a chat session. | <input type="radio"/> | <input type="radio"/> |
| Power Automate flows operate with administrative privileges at all times. | <input type="radio"/> | <input type="radio"/> |

- A. Mastered
- B. Not Mastered

Answer: A

Explanation:

Box 1: Yes

By default, you can download up to seven days of bot conversation transcript sessions from the past 30 days directly from the Power Virtual Agents portal.

Box 2: No

You can set the permissions for a Flow. Reference:

<https://docs.microsoft.com/en-us/power-virtual-agents/analytics-sessions> <https://docs.microsoft.com/en-us/connectors/microsoftflowforadmins>

NEW QUESTION 271

- (Exam Topic 7)

You have a Power BI report with a page named RevReceived. The page shows gross revenue received by your company. You want to create an almost identical page that shows net revenue instead of gross revenue.

What should you do? To answer, select the appropriate option in the answer area.

| Answer Area |
|---|
| <p>You should</p> <div><div>copy the visuals from RevReceived to a new page.</div><div>duplicate the RecReceived page and update the duplicate copy.</div><div>import the RevReceived page.</div><div>modify the RevReceived page.</div></div> |

- A. Mastered
- B. Not Mastered

Answer: A

Explanation:

Answer Area

You should

copy the visuals from RevReceived to a new page.
duplicate the RecReceived page and update the duplicate copy. **!**
import the RevReceived page.
modify the RevReceived page.

NEW QUESTION 276

- (Exam Topic 7)

A company is evaluating ways that they can implement AI Builder.

For which two scenarios can you use AI Builder? Each correct selection presents a complete solution. NOTE: Each correct selection is worth one point.

- A. Send emails to all ai users who subscribe to a service.
- B. Synchronize data from an external database.
- C. Collect data from several data sources and display a dashboard that shows trending data.
- D. Interpret images and perform an action on the image.
- E. Detect patterns in data and predict outcomes

Answer: BD

NEW QUESTION 277

- (Exam Topic 7)

You are creating a model-driven app.

For each of the following statements, select Yes if the statement is true. Otherwise, select No.

NOTE: Each correct selection is worth one point.

| Statements | Yes | No |
|---|-----------------------|-----------------------|
| To add entities to an app, entities are dragged onto the app canvas from the components area. | <input type="radio"/> | <input type="radio"/> |
| View definition is created in the component area of the app designer. | <input type="radio"/> | <input type="radio"/> |
| You must save, validate, and publish your app for others to see the changes. | <input type="radio"/> | <input type="radio"/> |

- A. Mastered
- B. Not Mastered

Answer: A

Explanation:

Reference:

<https://docs.microsoft.com/en-us/powerapps/maker/model-driven-apps/build-first-model-driven-app>

<https://docs.microsoft.com/en-us/powerapps/maker/model-driven-apps/validate-app>

NEW QUESTION 282

- (Exam Topic 7)

A Power Apps developer has sufficient permissions to create apps, connections, and flows. The developer does not have permissions needed to access company data. You need to grant the developer access to company data for an app. Which predefined security role should you assign to the developer?

- A. Basic User
- B. System Customizer
- C. Environment Maker
- D. Delegate

Answer: B

NEW QUESTION 287

- (Exam Topic 7)

For each of the following statements, select Yes if the statement is true. Otherwise, select No. NOTE: Each correct selection is worth one point.

A. Mastered
B. Not Mastered

Answer: A

Explanation:

NEW QUESTION 289

- (Exam Topic 7)

A company uses a model-driven app. You add several columns to a form.

Users state the new columns do not appear on the form. You need to fix the issue.

What should you do?

- A. Ensure columns are in one section of the form only.
- B. Copy the form and rename it.
- C. Publish the form.
- D. Create a Power Automate flow.
- E. Create a business rule.

Answer: E

NEW QUESTION 294

- (Exam Topic 7)

You are developing reports for a company.

You must create visualizations that include the following data:

- Invoices due from a third-party enterprise resource planning (ERP) system
- Number of calls made to the client from Microsoft Dataverse
- Microsoft Excel file data

The reports must be displayed in a single page. You need to create the visualizations.

What should you use?

- A. deployment pipelines
B. tables
C. columns
D. dashboards

Answer: D

NEW QUESTION 296

- (Exam Topic 7)

A company plans to move an on-premises customer service data management system to a cloud-managed solution.

The customer service application must be replaced by a model-driven application. The company uses Microsoft SQL Server Integration Services (SSIS) packages to move data from the on-premises database system to a third-party enterprise resource planning (ERP) system.

You need to replace the SSIS packages for data transfer.

What should the company use in place of the packages to move the data?

- A. Microsoft Azure Data Lake
B. Power Virtual Agents
C. Data Migration Framework
D. Power Platform connector

Answer: C

NEW QUESTION 298

- (Exam Topic 7)

You overwrite a Power Automate flow by editing the definition and saving the changes. You need to be able to revert a flow to the current state. Which two options can you use? Each correct answer presents a complete solution. NOTE: Each correct selection is worth one point.

- A. Save As
- B. Rename
- C. Export
- D. Share

Answer: AC

NEW QUESTION 300

.....

Thank You for Trying Our Product

* 100% Pass or Money Back

All our products come with a 90-day Money Back Guarantee.

* One year free update

You can enjoy free update one year. 24x7 online support.

* Trusted by Millions

We currently serve more than 30,000,000 customers.

* Shop Securely

All transactions are protected by VeriSign!

100% Pass Your PL-900 Exam with Our Prep Materials Via below:

<https://www.certleader.com/PL-900-dumps.html>