

## Exam Questions 350-401

Implementing and Operating Cisco Enterprise Network Core Technologies

<https://www.2passeasy.com/dumps/350-401/>



#### NEW QUESTION 1

A network administrator is implementing a routing configuration change and enables routing debugs to track routing behavior during the change. The logging output on the terminal is interrupting the command typing process. Which two actions can the network administrator take to minimize the possibility of typing commands incorrectly? (Choose two.)

- A. Configure the logging synchronous global configuration command
- B. Configure the logging delimiter feature
- C. Configure the logging synchronous command under the vty
- D. Press the TAB key to reprint the command in a new line
- E. increase the number of lines on the screen using the terminal length command

**Answer:** CD

#### NEW QUESTION 2

Which function is handled by vManage in the Cisco SD-WAN fabric?

- A. Establishes BFD sessions to test liveliness of links and nodes.
- B. Distributes policies that govern data forwarding.
- C. Performs remote software upgrades for WAN Edge vSmart and vBond.
- D. Establishes IPsec tunnels with nodes

**Answer:** C

#### NEW QUESTION 3

A customer requests a network design that supports these requirements:

- FHRP redundancy
- multivendor router environment
- IPv4 and IPv6 hosts

Which protocol does the design include?

- A. HSRP version 2
- B. VRRP version 2
- C. GLBP
- D. VRRP version 3

**Answer:** D

#### NEW QUESTION 4

Which devices does Cisco DNA Center configure when deploying an IP-based access control policy?

- A. All devices integrating with ISE
- B. selected individual devices
- C. all devices in selected sites
- D. all wired devices

**Answer:** A

#### Explanation:

When you click Deploy, Cisco DNA Center requests the Cisco Identity Services Engine (Cisco ISE) to send notifications about the policy changes to the network devices.

#### NEW QUESTION 5

While configuring an IOS router for HSRP with a virtual IP of 10.1.1.1, an engineer sees this log message.

- A. Change the HSRP group configuration on the remote router to 1.
- B. Change the HSRP group configuration on the local router to 1.
- C. Change the HSRP virtual address on the remote router to 10.1.1.1
- D. Change the HSRP virtual address on the local router to 10.1.1.1

**Answer:** B

#### NEW QUESTION 6

How does EIGRP differ from OSPF?

- A. EIGRP is more prone to routing loops than OSPF
- B. EIGRP supports equal or unequal path cost, and OSPF supports only equal path cost.
- C. EIGRP has a full map of the topology, and OSPF only knows directly connected neighbors
- D. EIGRP uses more CPU and memory than OSPF

**Answer:** B

#### NEW QUESTION 7

Which technology provides a secure communication channel for all traffic at Layer 2 of the OSI model?

- A. MACsec
- B. IPsec
- C. SSL
- D. Cisco Trustsec

**Answer:** A

#### Explanation:

MACsec, defined in 802.1AE, provides MAC-layer encryption over wired networks by using out-of-band methods for encryption keying. The MACsec Key Agreement (MKA) Protocol provides the

#### NEW QUESTION 8

What are two benefits of YANG? (Choose two.)

- A. It enables multiple leaf statements to exist within a leaf list
- B. It collects statistical constraint analysis information.
- C. It enforces configuration constraints.
- D. It enforces configuration semantics.
- E. It enforces the use of a specific encoding format for NETCONF

**Answer:** BE

#### NEW QUESTION 9

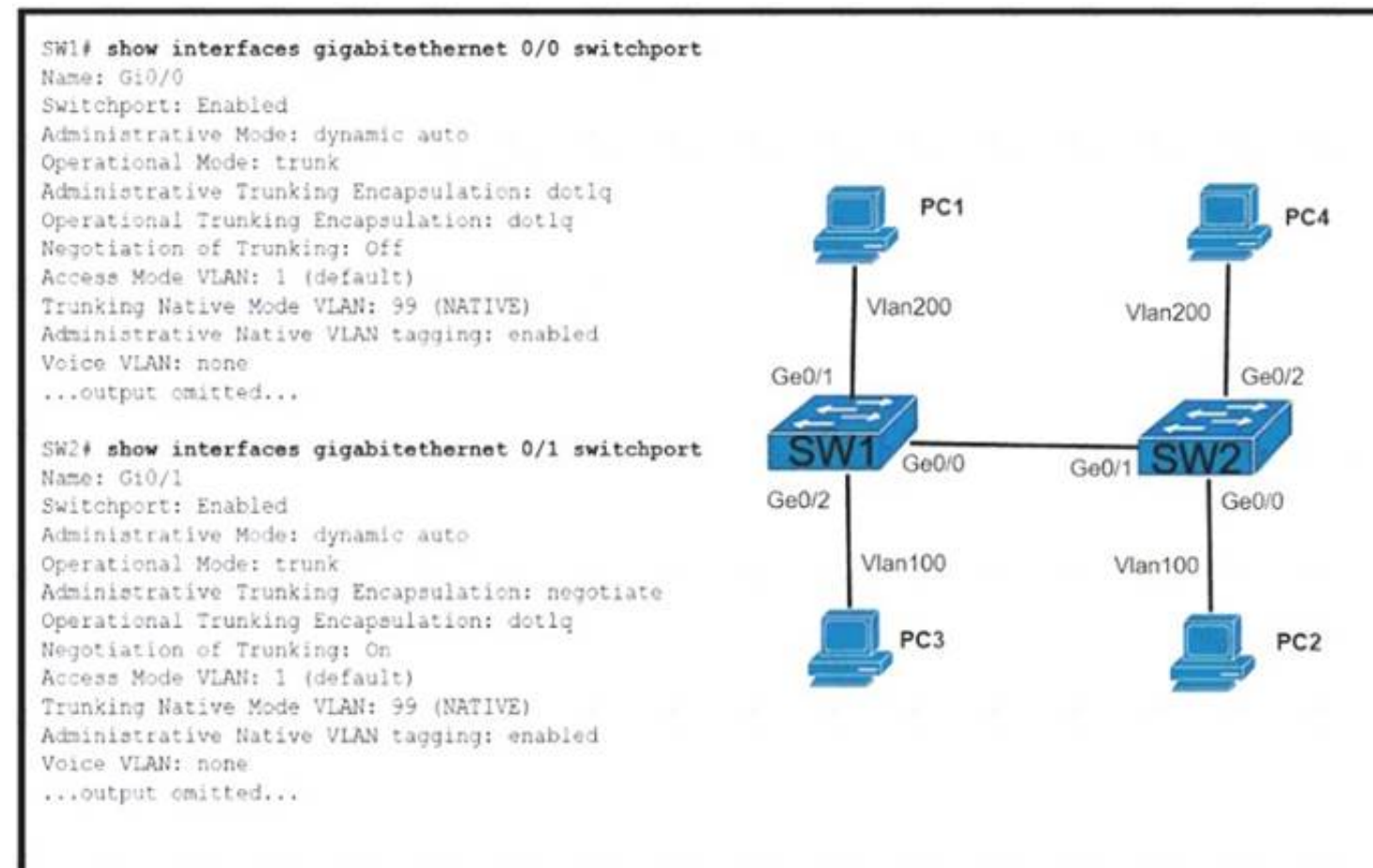
What occurs when a high bandwidth multicast stream is sent over an MVPN using Cisco hardware?

- A. The traffic uses the default MDT to transmit the data only if it is a (S,G) multicast route entry
- B. A data MDT is created to if it is a (\*, G) multicast route entries
- C. A data and default MDT are created to flood the multicast stream out of all PIM-SM neighbors.
- D. A data MDT is created to allow for the best transmission through the core for (S, G) multicast route entries.

**Answer:** B

#### NEW QUESTION 10

Refer to the exhibit.



The connecting between SW1 and SW2 is not operational. Which two actions resolve the issue? (Choose two)

- A. configure switchport mode access on SW2
- B. configure switchport nonegotiate on SW2
- C. configure switchport mode trunk on SW2
- D. configure switchport nonegotiate on SW1
- E. configure switchport mode dynamic desirable on SW2

**Answer:** CE

#### NEW QUESTION 10

What are two benefits of virtual switching when compared to hardware switching? (Choose two.)

- A. increased MTU size
- B. hardware independence
- C. VM-level isolation
- D. increased flexibility
- E. extended 802.1Q VLAN range

**Answer:** CD

#### NEW QUESTION 11

An engineer is configuring a new SSID to present users with a splash page for authentication. Which WLAN Layer 3 setting must be configured to provide this functionality?

- A. CCKM
- B. WPA2 Policy
- C. Local Policy
- D. Web Policy

**Answer:** C

#### NEW QUESTION 16

An engineer must provide wireless converge in a square office. The engineer has only one AP and believes that it should be placed it in the middle of the room. Which antenna type should the engineer use?

- A. directional
- B. polarized
- C. Yagi
- D. omnidirectional

**Answer:** D

#### NEW QUESTION 18

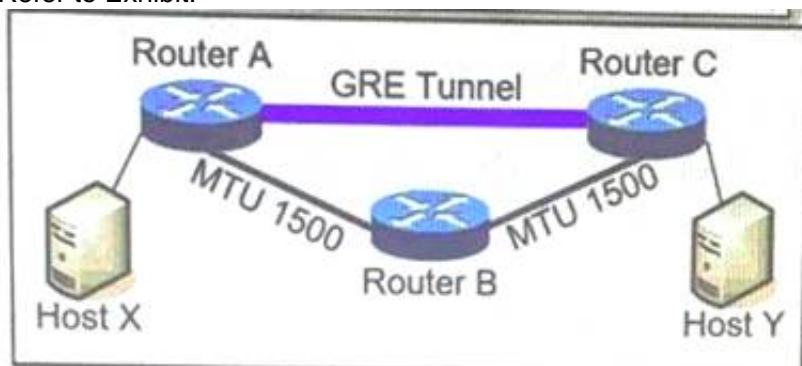
What is YANG used for?

- A. scraping data via CLI
- B. processing SNMP read-only polls
- C. describing data models
- D. providing a transport for network configuration data between client and server

**Answer:** C

#### NEW QUESTION 20

Refer to Exhibit.



MTU has been configured on the underlying physical topology, and no MTU command has been configured on the tunnel interfaces. What happens when a 1500-byte IPv4 packet traverses the GRE tunnel from host X to host Y, assuming the DF bit is cleared?

- A. The packet arrives on router C without fragmentation.
- B. The packet is discarded on router A
- C. The packet is discarded on router B
- D. The packet arrives on router C fragmented.

**Answer:** D

#### Explanation:

Text Description automatically generated



Like any protocol, using GRE adds a few bytes to the size of data packets. This must be factored into the MSS and MTU settings for packets. If the MTU is 1,500 bytes and the MSS is 1,460 bytes (to account for the size of the necessary IP and TCP headers), the addition of GRE 24-byte headers will cause the packets to exceed the MTU:

$$1,460 \text{ bytes [payload]} + 20 \text{ bytes [TCP header]} + 20 \text{ bytes [IP header]} + 24 \text{ bytes [GRE header + IP header]} = 1,524 \text{ bytes}$$

As a result, the packets will be fragmented. Fragmentation slows down packet delivery times and increases how much compute power is used, because packets that exceed the MTU must be broken down and then reassembled.

#### NEW QUESTION 21

Refer to the exhibit.

```
Router2# show policy-map control-plane

Control Plane
Service-policy input:CISCO
Class-map:CISCO (match-all)
  20 packets, 11280 bytes
  5 minute offered rate 0 bps, drop rate 0 bps
  Match:access-group 120
  police:
    8000 bps, 1500 limit, 1500 extended limit
    conformed 15 packets, 6210 bytes; action:transmit
    exceeded 5 packets, 5070 bytes; action:drop
    violated 0 packets, 0 bytes; action:drop
    conformed 0 bps, exceed 0 bps, violate 0 bps
  Class-map:class-default (match-any)
    105325 packets, 11415151 bytes
    5 minute offered rate 0 bps, drop rate 0 bps
    Match:any
```

An engineer configures CoPP and enters the show command to verify the implementation. What is the result of the configuration?

- A. All traffic will be policed based on access-list 120.
- B. If traffic exceeds the specified rate, it will be transmitted and remarked.
- C. Class-default traffic will be dropped.
- D. ICMP will be denied based on this configuration.

**Answer:** A

#### NEW QUESTION 22

In an SD-Access solution what is the role of a fabric edge node?

- A. to connect external Layer 3- network to the SD-Access fabric
- B. to connect wired endpoint to the SD-Access fabric
- C. to advertise fabric IP address space to external network
- D. to connect the fusion router to the SD-Access fabric

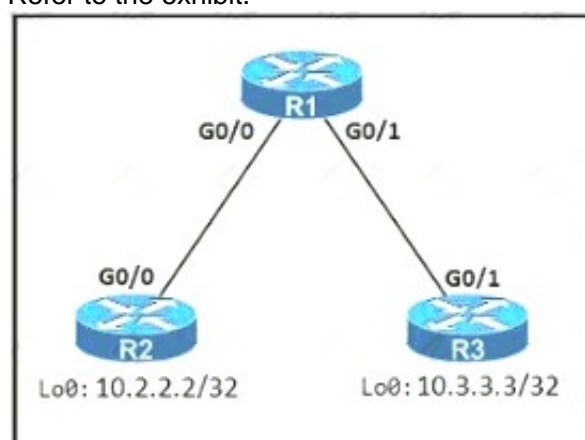
**Answer:** B

#### Explanation:

+ Fabric edge node: This fabric device (for example, access or distribution layer device) connects

#### NEW QUESTION 27

Refer to the exhibit.



An engineer must deny Telnet traffic from the loopback interface of router R3 to the loopback interface of router R2 during the weekend hours. All other traffic between the loopback interfaces of routers R3 and R2 must be allowed at all times. Which command accomplish this task?

A)  
R3(config)#time-range WEEKEND  
R3(config-time-range)#periodic Saturday Sunday 00:00 to 23:59  
  
R3(config)#access-list 150 deny tcp host 10.3.3.3 host 10.2.2.2 eq 23 time-range WEEKEND  
R3(config)#access-list 150 permit ip any any time-range WEEKEND  
  
R3(config)#interface G0/1  
R3(config-if)#ip access-group 150 out

B)  
R1(config)#time-range WEEKEND  
R1(config-time-range)#periodic Friday Sunday 00:00 to 00:00  
  
R1(config)#access-list 150 deny tcp host 10.3.3.3 host 10.2.2.2 eq 23 time-range WEEKEND  
R1(config)#access-list 150 permit ip any any  
  
R1(config)#interface G0/1  
R1(config-if)#ip access-group 150 in

C)  
R1(config)#time-range WEEKEND  
R1(config-time-range)#periodic weekend 00:00 to 23:59  
  
R1(config)#access-list 150 deny tcp host 10.3.3.3 host 10.2.2.2 eq 23 time-range WEEKEND  
R1(config)#access-list 150 permit ip any any  
  
R1(config)#interface G0/1  
R1(config-if)#ip access-group 150 in

D)  
R3(config)#time-range WEEKEND  
R3(config-time-range)#periodic weekend 00:00 to 23:59  
  
R3(config)#access-list 150 permit tcp host 10.3.3.3 host 10.2.2.2 eq 23 time-range WEEKEND  
R3(config)#access-list 150 permit ip any any time-range WEEKEND  
  
R3(config)#interface G0/1  
R3(config-if)#ip access-group 150 out

- A. Option A
- B. Option B
- C. Option C
- D. Option D

Answer: C

#### Explanation:

We cannot filter traffic that is originated from the local router (R3 in this case) so we can only configure the ACL on R1 or R2. "Weekend hours" means from Saturday morning through Sunday night so we have to configure: "periodic weekend 00:00 to 23:59".

Note: The time is specified in 24-hour time (hh:mm), where the hours range from 0 to 23 and the minutes range from 0 to 59.

#### NEW QUESTION 32

Refer to the exhibit.

```
DSW2#sh spanning-tree vlan 10
```

VLAN0010					
Spanning tree enabled protocol rstp					
Root ID      Priority      4106					
Address      0018.7363.4300					
This bridge is the root					
Hello Time    2 sec    Max Age 20 sec    Forward Delay 15 sec					
Bridge ID    Priority      4106 (priority 4096 sys-id-ext 20)					
Address      0018.7363.4300					
Hello Time    2 sec    Max Age 20 sec    Forward Delay 15 sec					
Aging Time 300					
Interface	Role	Sts	Cost	Prio.Nbr	Type
Fa1/0/7	Desg	FWD	2	128.9	P2p Peer (STP)
Fa1/0/10	Desg	FWD	4	128.12	P2p Peer (STP)
Fa1/0/11	Desg	FWD	2	128.13	P2p Peer (STP)
Fa1/0/12	Desg	FWD	2	128.14	P2p Peer (STP)

What is the result when a switch that is running PVST+ is added to this network?

- A. DSW2 operates in Rapid PVST+ and the new switch operates in PVST+
- B. Both switches operate in the PVST+ mode
- C. Spanning tree is disabled automatically on the network
- D. Both switches operate in the Rapid PVST+ mode.

**Answer:** A

**Explanation:**

From the output we see DSW2 is running in RSTP mode (in fact Rapid PVST+ mode as Cisco does not support RSTP alone). When a new switch running PVST+ mode is added to the topology, they keep running the old STP instances as RSTP (in fact Rapid PVST+) is compatible with PVST+.

**NEW QUESTION 33**

Which AP mode allows an engineer to scan configured channels for rogue access points?

- A. sniffer
- B. monitor
- C. bridge
- D. local

**Answer:** B

**NEW QUESTION 36**

Which design principle states that a user has no access by default to any resource, and unless a resource is explicitly granted, it should be denied?

- A. least privilege
- B. fail-safe defaults
- C. economy of mechanism
- D. complete mediation

**Answer:** B

**NEW QUESTION 38**

Drag and drop the DHCP messages that are exchanged between a client and an AP into the order they are exchanged on the right.

DHCP request	Step 1
DHCP offer	Step 2
DHCP discover	Step 3
DHCP ack	Step 4

- A. Mastered
- B. Not Mastered

**Answer:** A

**Explanation:**

Table Description automatically generated

There are four messages sent between the DHCP Client and DHCP Server: DHCPDISCOVER, DHCPOFFER, DHCPREQUEST and DHCPACKNOWLEDGEMENT.

This process is often abbreviated as DORA (for Discover, Offer, Request, Acknowledgement).

**NEW QUESTION 43**

What does the cisco REST response indicate?



```
{
  "response": [
    {
      "family": "Routers",
      "interfaceCount": "12",
      "lineCardCount": "9",
      "platformId": "ASR1001-X",
      "reachabilityFailureReason": "",
      "reachabilityStatus": "Reachable",
      "hostname": "RouterASR-1",
      "macAddress": "00:c8:8b:80:bb:00",
    },
    {
      "family": "Switches and Hubs",
      "interfaceCount": "41",
      "lineCardCount": "2",
      "platformId": "C9300-24UX",
      "reachabilityFailureReason": "",
      "reachabilityStatus": "Authentication Failed",
      "hostname": "cat9000-1",
      "macAddress": "78:7b:20:67:62:80",
    },
    {
      "family": "Switches and Hubs",
      "interfaceCount": "59",
      "lineCardCount": "2",
      "platformId": "WS-C3850-48U-E",
      "reachabilityFailureReason": "",
      "reachabilityStatus": "Unreachable",
      "hostname": "cat3850-1",
      "macAddress": "cc:d8:c1:15:d2:80",
    }
  ],
  "version": "1.0"
}
```

- A. Cisco DNA Center has the Incorrect credentials for cat3850-1
- B. Cisco DNA Center is unable to communicate with cat9000-1
- C. Cisco DNA Center has the incorrect credentials for cat9000-1
- D. Cisco DNA Center has the Incorrect credentials for RouterASR-1

Answer: C

#### NEW QUESTION 48

Drag and drop the snippets onto the blanks within the code to construct a script that configures BGP according to the topology. Not all options are used, and some options may be used twice.

```
<config xmlns:xc="urn:ietf:params:xml:ns:netconf:base:1.0" xmlns="urn:ietf:params:xml:ns:netconf:base:1.0">
  <native xmlns="http://cisco.com/ns/yang/Cisco-IOS-XE-native" xmlns:ios-bgp="http://cisco.com/ns/yang/Cisco-IOS-XE-bgp">
    <router>
      <ios-bgp:bgp>
        <ios-bgp:id> /ios-bgp:id>
        <ios-bgp:neighbor>
          <ios-bgp:id> /ios-bgp:id>
          <ios-bgp:remote-as>
            </ios-bgp:remote-as>
          </ios-bgp:neighbor>
          <ios-bgp:address-family>
            <ios-bgp:no-vrf>
              <ios-bgp:ipv4>
                <ios-bgp:af-name>unicast</ios-bgp:af-name>
                <ios-bgp:ipv4-unicast>
                  <ios-bgp:neighbor>
                    <ios-bgp:id> /ios-bgp:id>
                    <ios-bgp:soft-reconfiguration>inbound</ios-bgp:soft-reconfiguration>
                  </ios-bgp:neighbor>
                </ios-bgp:ipv4-unicast>
              </ios-bgp:ipv4>
            </ios-bgp:no-vrf>
          </ios-bgp:address-family>
        </ios-bgp:bgp>
      </router>
    </native>
  </config>
```



192.168.1.1   192.168.1.2   65000   65001   Client   ISP

- A. Mastered
- B. Not Mastered

Answer: A

#### Explanation:

Graphical user interface, text, application, email Description automatically generated

#### NEW QUESTION 53

Refer to the exhibit.



```

PYTHON CODE
import requests
import json

url="http://YOURIPins"
switchuser="USERID"
switchpassword="PASSWORD"

myheaders={'content-type': 'application/json'}
payload={
  "ins_api": {
    "version": "1.0",
    "type": "cli_show",
    "chunk": "0",
    "sid": "1",
    "input": "show version",
    "output_format": "json"
  }
}
response = requests.post(url,data=json.dumps(payload), headers=myheaders,auth=(switchuser,switchpassword)) json()
print(response["ins_api"]["outputs"][0]["output"]["body"]["kickstart_ver_str"])

HTTP JSON Response:
{
  "ins_api": {
    "type": "cli_show",
    "version": "1.0",
    "sid": "eoc",
    "outputs": {
      "output": {
        "input": "show version",
        "msg": "Success",
        "code": "200",
        "body": {
          "bios_ver_str": "07.61",
          "kickstart_ver_str": "7.0(3)I7(4)",
          "bios_cmt_time": "04/06/2017",
          "kick_file_name": "bootflash://rxos.7.0.3.I7.4.bin",
          "kick_cmt_time": "6/14/1970 2:00:00",
          "kick_timestamp": "06/14/1970 09:49:04",
          "chassis_id": "Nexus6000 93180YC-FX chassis",
          "cpu_name": "Intel(R) Xeon(R) CPU @ 1.80GHz",
          "memory": 24633488,
          "mem_type": "kB",
          "n_uses": 134703,
          "n_cmo": "Sun Mar 10 15:41:46 2019",
          "n_reason": "Reset Requested by CLI command reload",
          "n_sys_ver": "7.0(3)I7(4)",
          "n_service": "",
          "manufacturer": "Cisco Systems, Inc.",
          "TABLE_package_list": {
            "ROW_package_list": {
              "package_id": []
            }
          }
        }
      }
    }
  }
}

```

Which HTTP JSON response does the python code output give?

- A. NameError: name 'json' is not defined
- B. KeyError 'kickstart\_ver\_str'
- C. 7.61
- D. 7.0(3)I7(4)

**Answer: D**

#### NEW QUESTION 58

Refer to the exhibit.

```

ip nat pool Internet 10.10.10.1 10.10.10.100 netmask 255.255.255.0
ip nat inside source route-map Users pool Internet
!
ip access-list standard Users
10 permit 192.168.1.0 0.0.0.255
!
route-map Users permit 10
match ip address Users

```

Which action completes the configuration to achieve a dynamic continuous mapped NAT for all users?

- A. Configure a match-host type NAT pool
- B. Reconfigure the pool to use the 192.168.1.0 address range
- C. Increase the NAT pool size to support 254 usable addresses
- D. Configure a one-to-one type NAT pool

**Answer: C**

#### NEW QUESTION 60

Which LISP component is required for a LISP site to communicate with a non-LISP site?

- A. ETR
- B. ITR
- C. Proxy ETR
- D. Proxy ITR

**Answer: C**

#### NEW QUESTION 62

In a wireless Cisco SD-Access deployment, which roaming method is used when a user moves from one access point to another on a different access switch using a single WLC?

- A. Layer 3
- B. inter-xTR
- C. auto anchor
- D. fast roam

**Answer: D**

#### NEW QUESTION 67

which entity is a Type 1 hypervisor?

- A. Oracle VM VirtualBox
- B. VMware server
- C. Citrix XenServer
- D. Microsoft Virtual PC

Answer: C

#### NEW QUESTION 69

Refer to the exhibit.

```
Device# configure terminal
Device(config)# netconf ssh acl 1
Device(config)# netconf lock-time 100
Device(config)# netconf max-sessions 1
Device(config)# netconf max-message 10
```

A network engineer must configure NETCONF. After creating the configuration, the engineer gets output from the command show line, but not from show running-config. Which command completes the configuration?

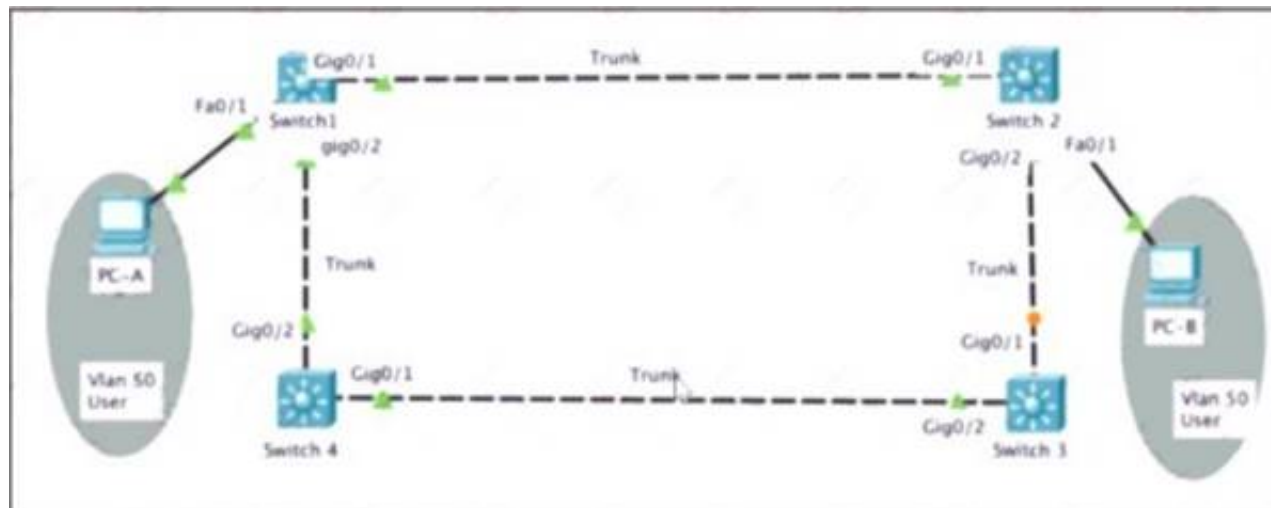
- ☒ Device(config)# netconf lock-time 500
- ☐ Device(config)# netconf max-message 1000
- ☒ Device(config)# no netconf ssh acl 1
- ☐ Device(config)# netconf max-sessions 100

- A. Option A
- B. Option B
- C. Option C
- D. Option D

Answer: C

#### NEW QUESTION 71

Refer to the exhibit.



Rapid PVST+ is enabled on all switches. Which command set must be configured on switch1 to achieve the following results on port fa0/1?

- When a device is connected, the port transitions immediately to a forwarding state.
- The interface should not send or receive BPDUs.
- If a BPDU is received, it continues operating normally.

A)

```
Switch1(config)# interface f0/1
Switch1(config-if)# spanning-tree portfast
```

B)

```
Switch1(config)# spanning-tree portfast bpduguard default
Switch1(config)# interface f0/1
Switch1(config-if)# spanning-tree portfast
```

C)

```
Switch1(config)# spanning-tree portfast bpduguard default
Switch1(config)# interface f0/1
Switch1(config-if)# spanning-tree portfast
```

D)

```
Switch1(config)# interface f0/1
Switch1(config-if)# spanning-tree portfast
Switch1(config-if)# spanning-tree bpduguard enable
```

- A. Option A
- B. Option B
- C. Option C

D. Option D

**Answer:** D

#### NEW QUESTION 76

What is a benefit of a virtual machine when compared with a physical server?

- A. Multiple virtual servers can be deployed on the same physical server without having to buy additional hardware.
- B. Virtual machines increase server processing performance.
- C. The CPU and RAM resources on a virtual machine cannot be affected by other virtual machines.
- D. Deploying a virtual machine is technically less complex than deploying a physical server.

**Answer:** A

#### NEW QUESTION 78

Refer to the exhibit.



Router 1 is currently operating as the HSRP primary with a priority of 110 router1 fails and router2 take over the forwarding role. Which command on router1 causes it to take over the forwarding role when it return to service?

- A. standby 2 priority
- B. standby 2 preempt
- C. standby 2 track
- D. standby 2 timers

**Answer:** B

#### NEW QUESTION 79

Which data is properly formatted with JSON?

A)

```

{
  "name": "Peter",
  "age": "25",
  "likesJson": true,
  "characteristics": ["small", "strong", 18]
}
  
```

B)

```

{
  "name": "Peter",
  "age": "25",
  "likesJson": true,
  "characteristics": ["small", "strong", "18"],
}
  
```

C)

```

{
  "name": "Peter"
  "age": "25"
  "likesJson": true
  "characteristics": ["small", "strong", 18]
}
  
```

D)

```
{
  "name": Peter,
  "age": 25,
  "likesJson": true,
  "characteristics": ["small", "strong", "18"],
}
```

- A. Option A
- B. Option B
- C. Option C
- D. Option D

**Answer:** A

### NEW QUESTION 82

The login method is configured on the VTY lines of a router with these parameters

- > The first method for authentication is TACACS
  - > If TACACS is unavailable login is allowed without any provided credentials
- Which configuration accomplishes this task?

- ☐ R1#sh run | include aaa  
aaa new-model  
aaa authentication login default group tacacs+  
aaa session-id common  
R1#sh run | section vty  
line vty 0 4  
transport input none  
R1#
- ☐ R1#sh run | include aaa  
aaa new-model  
aaa authentication login default group tacacs+ none  
aaa session-id common  
R1#sh run | section vty  
line vty 0 4  
password 7 02050D480809  
R1#sh run | include username  
R1#
- ☐ R1#sh run | include aaa  
aaa new-model  
aaa authentication login telnet group tacacs+ none  
aaa session-id common  
R1#sh run | section vty  
line vty 0 4  
R1#sh run | include username  
R1#
- ☐ R1#sh run | include aaa  
aaa new-model  
aaa authentication login VTY group tacacs+ none  
aaa session-id common  
R1#sh run | section vty  
line vty 0 4  
password 7 02050D480809  
R1#sh run | include username  
R1#

- A. Option A
- B. Option B
- C. Option C
- D. Option D

**Answer:** B

### NEW QUESTION 83

An engineer is working with the Cisco DNA Center API Drag and drop the methods from the left onto the actions that they are used for on the right.



GET	remove an element using the API
POST	update an element
DELETE	extract information from the API
PUT	create an element

- A. Mastered  
B. Not Mastered

Answer: A

Explanation:

DELETE

PUT

GET

POST

NEW QUESTION 88  
Drag and drop the descriptions from the left onto the QoS components on the right.

causes TCP retransmissions when traffic is dropped

buffers excessive traffic

introduces no delay and jitter

introduces delay and jitter

drops excessive traffic

typically delays, rather than drops traffic

Traffic Policing

Traffic Shaping

- A. Mastered  
B. Not Mastered

Answer: A

Explanation:



#### NEW QUESTION 93

What does Call Admission Control require the client to send in order to reserve the bandwidth?

- A. SIP flow information
- B. Wi-Fi multimedia
- C. traffic specification
- D. VoIP media session awareness

Answer: D

#### NEW QUESTION 98

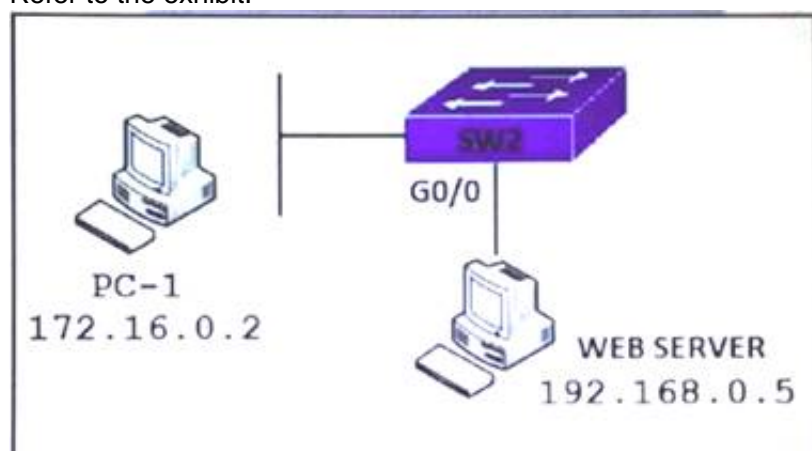
In an SD-WAN deployment, which action in the vSmart controller responsible for?

- A. handle, maintain, and gather configuration and status for nodes within the SD-WAN fabric
- B. distribute policies that govern data forwarding performed within the SD-WAN fabric
- C. gather telemetry data from vEdge routers
- D. onboard vEdge nodes into the SD-WAN fabric

Answer: B

#### NEW QUESTION 100

Refer to the exhibit.



PC-1 must access the web server on port 8080. To allow this traffic, which statement must be added to an access control list that is applied on SW2 port G0/0 in the inbound direction?

- A. permit host 172.16.0.2 host 192.168.0.5 eq 8080
- B. permit host 192.168.0.5 host 172.16.0.2 eq 8080
- C. permit host 192.168.0.5 eq 8080 host 172.16.0.2
- D. permit host 192.168.0.5 it 8080 host 172.16.0.2

Answer: C

#### Explanation:

The inbound direction of G0/0 of SW2 only filter traffic from Web Server to PC-1 so the source IP address and port is of the Web Server.

#### NEW QUESTION 103

What are two differences between the RIB and the FIB? (Choose two.)

- A. The FIB is derived from the data plane, and the RIB is derived from the FIB.

- B. The RIB is a database of routing prefixes, and the FIB is the Information used to choose the egress interface for each packet.  
 C. FIB is a database of routing prefixes, and the RIB is the information used to choose the egress interface for each packet.  
 D. The FIB is derived from the control plane, and the RIB is derived from the FIB.  
 E. The RIB is derived from the control plane, and the FIB is derived from the RIB.

**Answer:** BE

#### NEW QUESTION 104

A network is being migrated from IPV4 to IPV6 using a dual-stack approach. Network management is already 100% IPV6 enabled. In a dual-stack network with two dual-stack NetFlow collections, how many flow exporters are needed per network device in the flexible NetFlow configuration?

- A. 1  
 B. 2  
 C. 4  
 D. 8

**Answer:** B

#### NEW QUESTION 107

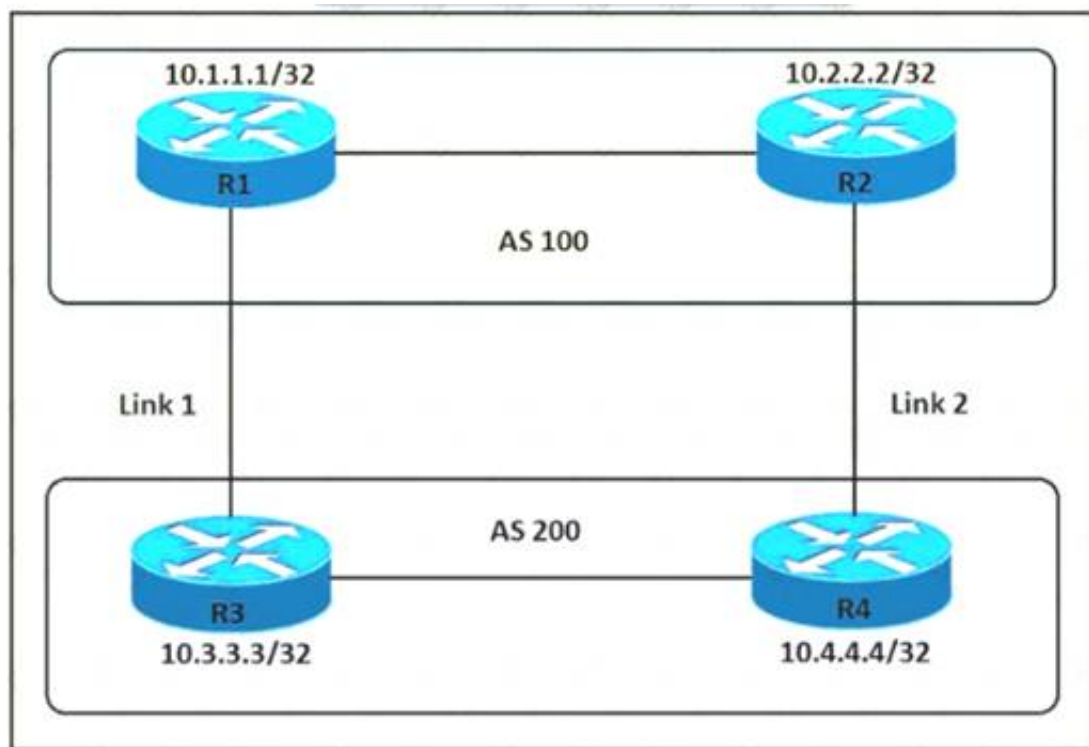
A customer has recently implemented a new wireless infrastructure using WLC-5520 at a site directly next to a large commercial airport. Users report that they intermittently lose WI-FI connectivity, and troubleshooting reveals it is due to frequent channel changes. Which two actions fix this issue? (Choose two)

- A. Remove UNII-2 and Extended UNII-2 channels from the 5 Ghz channel list  
 B. Restore the DCA default settings because this automatically avoids channel interference.  
 C. Configure channels on the UNII-2 and the Extended UNII-2 sub-bands of the 5 Ghz band only  
 D. Enable DFS channels because they are immune to radar interference.  
 E. Disable DFS channels to prevent interference with Doppler radar

**Answer:** AE

#### NEW QUESTION 108

Refer to the exhibit.



An engineer must ensure that all traffic leaving AS 200 will choose Link 2 as the exit point. Assuming that all BGP neighbor relationships have been formed and that the attributes have not been changed on any of the routers, which configuration accomplish task?

- A. R4(config-router)bgp default local-preference 200  
 B. R3(config-router)neighbor 10.1.1.1 weight 200  
 C. R3(config-router)bgp default local-preference 200  
 D. R4(config-router)nighbor 10.2.2.2 weight 200

**Answer:** A

#### Explanation:

Local preference is an indication to the AS about which path has preference to exit the AS in order to reach a certain network. A path with a higher local preference is preferred. The default value for local preference is 100.

Unlike the weight attribute, which is only relevant to the local router, local preference is an attribute that routers exchange in the same AS. The local preference is set with the "bgp default local-preference value" command.

In this case, both R3 & R4 have exit links but R4 has higher local-preference so R4 will be chosen as the preferred exit point from AS 200.

#### NEW QUESTION 111

Where is radio resource management performed in a cisco SD-access wireless solution?

- A. DNA Center  
 B. control plane node  
 C. wireless controller  
 D. Cisco CMX

**Answer: C**

**Explanation:**

Fabric wireless controllers manage and control the fabric-mode APs using the same general model as the traditional local-mode controllers which offers the same operational advantages such as mobility control and radio resource management. A significant difference is that client traffic from wireless endpoints is not tunnelled from the APs to the wireless controller. Instead, communication from wireless clients is encapsulated in VXLAN by the fabric APs which build a tunnel to their first-hop fabric edge node. Wireless traffic is tunneled to the edge nodes as the edge nodes provide fabric services such as the Layer 3 Anycast Gateway, policy, and traffic enforcement. <https://www.cisco.com/c/en/us/td/docs/solutions/CVD/Campus/cisco-sda-design-guide.html>

**NEW QUESTION 115**

An engineer is troubleshooting the Ap join process using DNS. Which FQDN must be resolvable on the network for the access points to successfully register to the WLC?

- A. wlcbostrname.domain.com
- B. cisco-capwap-controller.domain.com
- C. ap-manager.domain.com
- D. primary-wlc.domain.com

**Answer: B**

**NEW QUESTION 118**

Which configuration restricts the amount of SSH that a router accepts 100 kbps?

A)

```
class-map match-all CoPP_SSH
  match access-group name CoPP_SSH
!
policy-map CoPP_SSH
  class CoPP_SSH
    police cir 100000
      exceed-action drop
  !
!
interface GigabitEthernet0/1
  ip address 209.165.200.225 255.255.255.0
  ip access-group BRRG25 out
  duplex auto
  speed auto
  media-type rj45
  service-policy input CoPP_SSH
!
ip access-list extended CoPP_SSH
  permit tcp any any eq 22
!
```

B)

```
class-map match-all CoPP_SSH
  match access-group name CoPP_SSH
!
policy-map CoPP_SSH
  class CoPP_SSH
    police cir 100000
      exceed-action drop
  !
!
interface GigabitEthernet0/1
  ip address 209.165.200.225 255.255.255.0
  ip access-group BRRG25 out
  duplex auto
  speed auto
  media-type rj45
  service-policy input CoPP_SSH
!
ip access-list extended CoPP_SSH
  deny tcp any any eq 22
!
```

C)

```
class-map match-all CoPP_SSH
  match access-group name CoPP_SSH
!
policy-map CoPP_SSH
  class CoPP_SSH
    police cir 100000
      exceed-action drop
  !
!
control-plane
  service-policy input CoPP_SSH
!
ip access-list extended CoPP_SSH
  permit tcp any any eq 22
!
```

D)

```
class-map match-all CoPP_SSH
  match access-group name CoPP_SSH
!
policy-map CoPP_SSH
  class CoPP_SSH
    police cir 100000
      exceed-action drop
  !
!
control-plane transmit
  service-policy input CoPP_SSH
!
ip access-list extended CoPP_SSH
  permit tcp any any eq 22
!
```

- A. Option A
- B. Option B
- C. Option C
- D. Option D

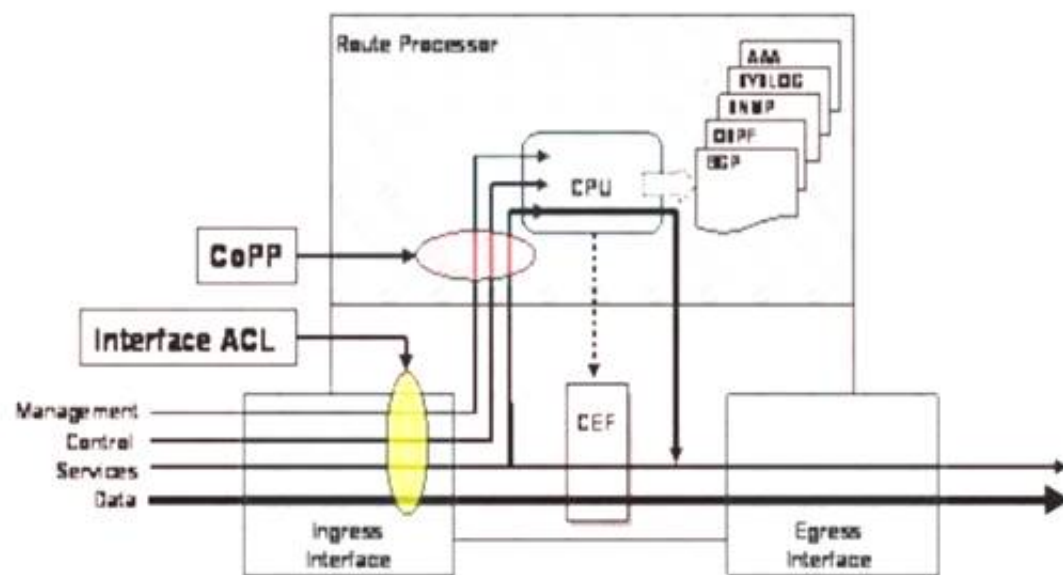
**Answer: C**

**Explanation:**

CoPP protects the route processor on network devices by treating route processor resources as a separate entity with its own ingress interface (and in some implementations, egress also). CoPP is used to police traffic that is destined to the route processor of the router such as:



- + routing protocols like OSPF, EIGRP, or BGP.
- + Gateway redundancy protocols like HSRP, VRRP, or GLBP.
- + Network management protocols like telnet, SSH, SNMP, or RADIUS.



Therefore we must apply the CoPP to deal with SSH because it is in the management plane. CoPP must be put under “control-plane” command.

#### NEW QUESTION 121

A server running Linux is providing support for virtual machines along with DNS and DHCP services for a small business. Which technology does this represent?

- A. container
- B. Type 1 hypervisor
- C. hardware pass-thru
- D. Type 2 hypervisor

Answer: D

#### NEW QUESTION 122

How are the different versions of IGMP compatible?

- A. IGMPv2 is compatible only with IGMPv1.
- B. IGMPv2 is compatible only with IGMPv2.
- C. IGMPv3 is compatible only with IGMPv3.
- D. IGMPv3 is compatible only with IGMPv1

Answer: A

#### NEW QUESTION 127

What are two characteristics of VXLAN? (Choose two)

- A. It uses VTEPs to encapsulate and decapsulate frames.
- B. It has a 12-bit network identifier
- C. It allows for up to 16 million VXLAN segments
- D. It lacks support for host mobility
- E. It extends Layer 2 and Layer 3 overlay networks over a Layer 2 underlay.

Answer: AC

#### NEW QUESTION 132

When configuration WPA2 Enterprise on a WLAN, which additional security component configuration is required?

- A. NTP server
- B. PKI server
- C. RADIUS server
- D. TACACS server

Answer: C

#### NEW QUESTION 135

Refer to the exhibit.

```
with manager connect(host=192.168.0.1, port=22,
    username='admin', password='password1', hostkey_verify=True,
    device_params={'name':'nexus'}) as m
```

What does the snippet of code achieve?

- A. It creates a temporary connection to a Cisco Nexus device and retrieves a token to be used for API calls.
- B. It opens a tunnel and encapsulates the login information, if the host key is correct.
- C. It opens an ncclient connection to a Cisco Nexus device and maintains it for the duration of the context.
- D. It creates an SSH connection using the SSH key that is stored, and the password is ignored.

**Answer:** C

**Explanation:**

ncclient is a Python library that facilitates client-side scripting and application development around the NETCONF protocol. The above Python snippet uses the ncclient to connect and establish a NETCONF session to a Nexus device (which is also a NETCONF server).

**NEW QUESTION 136**

How is 802.11 traffic handled in a fabric-enabled SSID?

- A. centrally switched back to WLC where the user traffic is mapped to a VXLAN on the WLC
- B. converted by the AP into 802.3 and encapsulated into VXLAN
- C. centrally switched back to WLC where the user traffic is mapped to a VLAN on the WLC
- D. converted by the AP into 802.3 and encapsulated into a VLAN

**Answer:** B

**NEW QUESTION 140**

A company has an existing Cisco 5520 HA cluster using SSO. An engineer deploys a new single Cisco Catalyst 9800 WLC to test new features. The engineer successfully configures a mobility tunnel between the 5520 cluster and 9800 WLC. Client connected to the corporate WLAN roam seamlessly between access points on the 5520 and 9800 WLC. After a failure on the primary 5520 WLC, all WLAN services remain functional; however, Client roam between the 5520 and 9800 controllers without dropping their connection. Which feature must be configured to remedy the issue?

- A. mobility MAC on the 5520 cluster
- B. mobility MAC on the 9800 WLC
- C. new mobility on the 5520 cluster
- D. new mobility on the 9800 WLC

**Answer:** B

**NEW QUESTION 144**

Refer to the exhibit.

```
Switch2#
01:25:08: %PM-4-ERR_DISABLE: channel-misconfig error detected on
Fa0/23, putting Fa0/23 in err-disable
state
01:25:08: %PM-4-ERR_DISABLE: channel-misconfig error detected on
Fa0/24, putting Fa0/24 in err-disable
state
Switch2#

Switch1#show etherchannel summary

!output omitted

Group  Port-channel  Protocol    Ports
-----+-----+-----+-----
1      Po2(SD)          LACP        Fa1/0/23(D)

Switch2#show etherchannel summary

!output omitted

Group  Port-channel  Protocol    Ports
-----+-----+-----+-----
1      Po1(SD)          -           Fa0/23(D)  Fa0/24(D)
```

An engineer is configuring an EtherChannel between Switch1 and Switch2 and notices the console message on switch2. Based on the output, which action resolves this issue?

- A. Configure less member ports on Switch2.
- B. Configure the same port channel interface number on both switches
- C. Configure the same EtherChannel protocol on both switches
- D. Configure more member ports on Switch1.

**Answer:** A

**NEW QUESTION 148**

Which characteristic distinguishes Ansible from Chef?

- A. Ansible lacks redundancy support for the master serve
- B. Chef runs two masters in an active/active mode.
- C. Ansible uses Ruby to manage configuration
- D. Chef uses YAML to manage configurations.
- E. Ansible pushes the configuration to the clien
- F. Chef client pulls the configuration from the server.
- G. The Ansible server can run on Linux, Unix or Window

H. The Chef server must run on Linux or Unix.

**Answer:** C

**NEW QUESTION 153**

.....

## THANKS FOR TRYING THE DEMO OF OUR PRODUCT

Visit Our Site to Purchase the Full Set of Actual 350-401 Exam Questions With Answers.

We Also Provide Practice Exam Software That Simulates Real Exam Environment And Has Many Self-Assessment Features. Order the 350-401 Product From:

<https://www.2passeasy.com/dumps/350-401/>

## Money Back Guarantee

### 350-401 Practice Exam Features:

- \* 350-401 Questions and Answers Updated Frequently
- \* 350-401 Practice Questions Verified by Expert Senior Certified Staff
- \* 350-401 Most Realistic Questions that Guarantee you a Pass on Your FirstTry
- \* 350-401 Practice Test Questions in Multiple Choice Formats and Updatesfor 1 Year