

AZ-800 Dumps

Administering Windows Server Hybrid Core Infrastructure

<https://www.certleader.com/AZ-800-dumps.html>



NEW QUESTION 1

SIMULATION - (Topic 4)

Task2

You need to ensure that the Azure file share named share1 can sync to on-premises servers.

The required source files are located in a folder named \\dc1.contoso.com\install. You do NOT need to specify the on-premises servers at this time.

- A. Mastered
- B. Not Mastered

Answer: A**Explanation:**

One possible solution to ensure that the Azure file share named share1 can sync to on-premises servers is to use Azure File Sync. Azure File Sync allows you to centralize your file shares in Azure Files without giving up the flexibility, performance, and compatibility of an on-premises file server. It does this by transforming your Windows Servers into a quick cache of your Azure file share. You can use any protocol available on Windows Server to access your data locally (including SMB, NFS, and FTPS) and you can have as many caches as you need across the world1.

Here are the steps to configure Azure File Sync for the Azure file share named share1 and the source files located in a folder named \\dc1.contoso.com\install:

? On the Azure portal, create a Storage Sync Service in the same region as your storage account that contains the Azure file share named share1. For more information on how to create a Storage Sync Service, see [How to deploy Azure File Sync](#).

? On the on-premises server that hosts the folder named \\dc1.contoso.com\install, install the Azure File Sync agent. For more information on how to install the Azure File Sync agent, see [Install the Azure File Sync agent](#).

? On the on-premises server, register the server with the Storage Sync Service that you created in the first step. For more information on how to register a server with a Storage Sync Service, see [Register/unregister a server with Storage Sync Service](#).

? On the Azure portal, create a sync group that defines the sync topology for a set of files. In the sync group, select the Azure file share named share1 as the cloud endpoint and the folder named \\dc1.contoso.com\install as the server endpoint.

For more information on how to create a sync group, see [Create a sync group and wait for the initial sync to complete](#). You can monitor the sync progress on the Azure portal or on the on-premises server. For more information on how to monitor sync progress, see [\[Monitor sync progress\]](#).

Once the initial sync is complete, you can add more on-premises servers to the same sync group to sync and cache the content locally. You can also enable cloud tiering to optimize the storage space on the on-premises servers by tiering infrequently accessed or older files to Azure Files.

NEW QUESTION 2

SIMULATION - (Topic 4)

Task 8

You need to create an Active Directory Domain Services (AD DS) site named Site2 that is associated to an IP address range of 192.168.2.0 to 192.168.2.255.

- A. Mastered
- B. Not Mastered

Answer: A**Explanation:**

To create an AD DS site named Site2 that is associated to an IP address range of 192.168.2.0 to 192.168.2.255, you can follow these steps:

? On a domain controller or a computer that has the Remote Server Administration

Tools (RSAT) installed, open Active Directory Sites and Services from the Administrative Tools menu or by typing dssite.msc in the Run box.

? In the left pane, right-click on Sites and select New Site.

? In the New Object - Site dialog box, enter Site2 as the Name of the new site.

Select a site link to associate the new site with, such as DEFAULTIPSITELINK, and click OK. You can also create a new site link if you want to customize the replication frequency and schedule between the sites. For more information on how to create a site link, see [Create a Site Link](#).

? In the left pane, right-click on Subnets and select New Subnet.

? In the New Object - Subnet dialog box, enter 192.168.2.0/24 as the Prefix of the subnet. This notation represents the IP address range of 192.168.2.0 to 192.168.2.255 with a subnet mask of 255.255.255.0. Select Site2 as the Site object to associate the subnet with, and click OK.

? Wait for the changes to replicate to other domain controllers. You can verify the site and subnet creation by checking the Sites and Subnets containers in Active Directory Sites and Services.

Now, you have created an AD DS site named Site2 that is associated to an IP address range of 192.168.2.0 to 192.168.2.255. You can add domain controllers to the new site and configure the site links and site link bridges to optimize the replication topology.

NEW QUESTION 3

- (Topic 3)

Note: This question is part of a series of questions that present the same scenario. Each question in the series contains a unique solution that might meet the stated goals. Some question sets might have more than one correct solution, while others might not have a correct solution.

After you answer a question in this section, you will NOT be able to return to it. As a result, these questions will not appear in the review screen.

Your network contains an Active Directory Domain Services (AD DS) domain named contoso.com.

You need to identify which server is the PDC emulator for the domain.

Solution: From Active Directory Domains and Trusts, you right-click Active Directory Domains and Trusts in the console tree, and then select Operations Master. Does this meet the goal?

- A. Yes
- B. No

Answer: B**NEW QUESTION 4**

- (Topic 3)

You have an Azure subscription that contains a virtual machine named VM1 as shown in the following exhibit.



The subscription has the disks shown in the following table.

Name	Resource group	Location	Availability zone
Disk1	RG1	East US	None
Disk2	RG2	East US	1
Disk3	RG1	Central US	None
Disk4	RG1	Central US	1

Which disks can you attach as data disks to VM1?

- A. Disk2 only
- B. Disk4 only
- C. Disk1 and Disk2 only
- D. Disk2 and Disk4 only
- E. Disk1, Disk3, and Disk4 only
- F. Disk1, Disk2, Disk3. and Disk4

Answer: C

NEW QUESTION 5

HOTSPOT - (Topic 3)

You have a Windows Server container host named Server1.

You start the containers on Server1 as shown in the following table.

Name	Image	Uses Hyper-V isolation	Process running on container
Container1	microsoft/iis	No	ProcessA
Container2	microsoft/iis	No	ProcessB
Container3	microsoft/iis	Yes	ProcessC
Container4	microsoft/iis	Yes	ProcessD

You need to validate the status of ProcessA and ProcessC.

Where can you verify that ProcessA and ProcessC are in a running state? To answer, select the appropriate options in the answer area.

NOTE: Each correct selection is worth one point.

Answer Area

ProcessA:

ProcessC:

- A. Mastered
- B. Not Mastered

Answer: A

Explanation:

Answer Area

ProcessA:

ProcessC:

NEW QUESTION 6

- (Topic 3)

Your network contains an Active Directory Domain Services (AD DS) domain named contoso.com. The domain contains two servers named Server1 and Server2. Server1 contains a disk named Disk2. Disk2 contains a folder named UserData. UserData is shared to the Domain Users group. Disk2 is configured for deduplication. Server1 is protected by using Azure Backup.

Server1 fails.

You connect Disk2 to Server2.

You need to ensure that you can access all the files on Disk2 as quickly as possible. What should you do?

- A. Create a storage pool.
- B. Restore files from Azure Backup.
- C. Install the File Server Resource Manager server role.
- D. Install the Data Deduplication server role.

Answer: C

Explanation:

Reference:

<https://docs.microsoft.com/en-us/windows-server/storage/data-deduplication/overview>

NEW QUESTION 7

- (Topic 3)

Note: This question is part of a series of questions that present the same scenario. Each question in the series contains a unique solution that might meet the stated goals. Some question sets might have more than one correct solution, while others might not have a correct solution.

After you answer a question in this section, you will NOT be able to return to it. As a result, these questions will not appear in the review screen.

Your network contains an Active Directory Domain Services (AD DS) forest. The forest contains three Active Directory sites named Site1, Site2, and Site3. Each site contains two domain controllers. The sites are connected by using DEFAULTIPSITELINK.

You open a new branch office that contains only client computers.

You need to ensure that the client computers in the new office are primarily authenticated by the domain controllers in Site1.

Solution: You create an organization unit (OU) that contains the client computers in the branch office. You configure the Try Next Closest Site Group Policy Object (GPO) setting in a GPO that is linked to the new OU.

Does this meet the goal?

- A. Yes
- B. No

Answer: B

NEW QUESTION 8

- (Topic 3)

You have an Azure virtual machine named VM1 that has a private IP address only. You configure the Windows Admin Center extension on VM1.

You have an on-premises computer that runs Windows 11. You use the computer for server management.

You need to ensure that you can use Windows Admin Center from the Azure portal to manage VM1.

What should you configure?

- A. an Azure Bastion host on the virtual network that contains VM1.
- B. a VPN connection to the virtual network that contains VM1.
- C. a network security group (NSG) rule that allows inbound traffic on port 443.
- D. a private endpoint on the virtual network that contains VM1.

Answer: B

Explanation:

Reference:

<https://docs.microsoft.com/en-us/windows-server/manage/windows-admin-center/azure/manage-vm>

NEW QUESTION 9

- (Topic 3)

Your network contains an Active Directory Domain Services (AD DS) domain. The domain contains 10 servers that run Windows Server. The servers have static IP addresses.

You plan to use DHCP to assign IP addresses to the servers.

You need to ensure that each server always receives the same IP address.

Which type of identifier should you use to create a DHCP reservation for each server?

- A. universally unique identifier (UUID)
- B. fully qualified domain name (FQDN)
- C. NetBIOS name
- D. MAC address

Answer: D

Explanation:

Reference:

<https://docs.microsoft.com/en-us/powershell/module/dhcpserver/add-dhcpserverv4reservation?view=windowsserver2022-ps>

NEW QUESTION 10

HOTSPOT - (Topic 3)

Your on-premises network contains a server named Server1 and uses an IP address space of 192.168.10.0/24.

You have an Azure virtual network that contains a subnet named Subnet1. Subnet1 uses an IP address space of 192.168.10.0/24.

You need to migrate Server1 to Subnet1. You must use Azure Extended Network to maintain the existing IP address of Server1.
What is the minimum number of virtual machines that you should deploy? To answer, select the appropriate options in the answer area.
NOTE: Each correct selection is worth one point

Answer Area

Virtual machines that run Windows Server 2022 Azure Edition:

Virtual machines that run Windows Server 2019 or Windows Server 2022:

- A. Mastered
- B. Not Mastered

Answer: A

Explanation:

Answer Area

Virtual machines that run Windows Server 2022 Azure Edition:

Virtual machines that run Windows Server 2019 or Windows Server 2022:

NEW QUESTION 10

- (Topic 3)

You have a Windows Server container host named Server 1 and a container image named Image1.
You need to start a container from image1. The solution must run the container on a Hyper- V virtual machine.
Which parameter should you specify when you run the docker run command?

- A. --expose
- B. --privileged
- C. --runtime
- D. --entrypoint
- E. --isolation

Answer: D

Explanation:

Reference:

<https://docs.microsoft.com/en-us/virtualization/windowscontainers/manage-containers/hyperv-container>

NEW QUESTION 14

- (Topic 3)

Your network contains an Active Directory Domain Services (AD DS) forest. The forest contains three Active Directory sites named Site1, Site2, and Site3. Each site contains two domain controllers. The sites are connected by using DEFAULTIPSITELINK.
You open a new branch office that contains only client computers.
You need to ensure that the client computers in the new office are primarily authenticated by the domain controllers in Site1.
Solution: You create a new subnet object that is associated to Site1. Does this meet the goal?

- A. Yes
- B. No

Answer: B

NEW QUESTION 19

- (Topic 3)

Your network contains an on-premises Active Directory Domain Services (AD DS) domain named contoso.com. The domain contains three servers that run Windows Server and have the Hyper-V server role installed. Each server has a Switch Embedded Teaming (SET) team.
You need to verify that Remote Direct Memory Access (RDMA) and required Windows Server settings are configured properly on each server to support a failover cluster.
What should you use?

- A. the validate-DCB cmdlet
- B. Server Manager
- C. the Get-NetAdapter cmdlet
- D. Failover Cluster Manager

Answer: A

NEW QUESTION 22

HOTSPOT - (Topic 3)

Your network contains an Active Directory Domain Services (AD DS) domain named adatum.com. The domain contains a file server named Server1 and three users named User1, User2, and User3.

Server1 contains a shared folder named Share1 that has the following configurations:

ShareState	:	Online
AvailabilityType	:	NonClustered
FolderEnumerationMode	:	AccessBased
CachingMode	:	Manual
LeasingMode	:	Full
SmbInstance	:	Default
CompressData	:	False
ContinuouslyAvailable	:	False
EncryptData	:	False
Name	:	Share1
Path	:	E:\Share1
ShadowCopy	:	False

The share permissions for Share1 are configured as shown in the Share Permissions exhibit.

Share Permissions

Group or user names:

Domain Users (ADATUM\Domain Users)

Add...

Remove

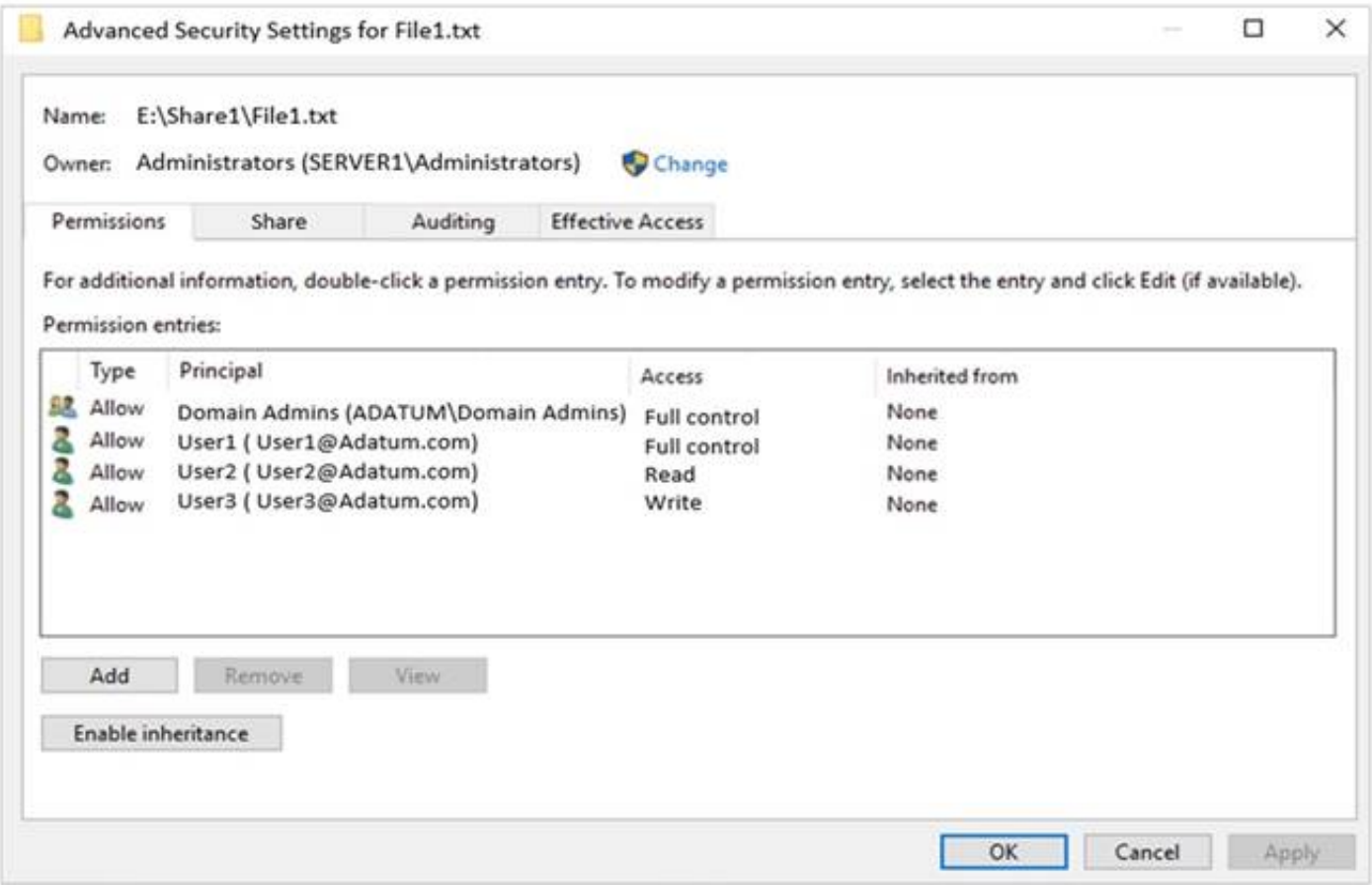
Permissions for Domain Users	Allow	Deny
Full Control	<input type="checkbox"/>	<input type="checkbox"/>
Change	<input checked="" type="checkbox"/>	<input type="checkbox"/>
Read	<input checked="" type="checkbox"/>	<input type="checkbox"/>

OK

Cancel

Apply

Share1 contains a file named File1.bxt. The share settings for File1.txt are configured as shown in the File Permissions exhibit.



For each of the following statements, select Yes if the statement is true. Otherwise, select No.
NOTE: Each correct selection is worth one point.

Statements	Yes	No
When User1 connects to \\Server1.adatum.com\Share1\, the user can take ownership of File1.txt.	<input type="checkbox"/>	<input type="checkbox"/>
When User2 connects to \\Server1.adatum.com\Share1\, File1.txt is visible.	<input type="checkbox"/>	<input type="checkbox"/>
When User3 connects to \\Server1.adatum.com\Share1\, File1.txt is visible.	<input type="checkbox"/>	<input type="checkbox"/>

- A. Mastered
B. Not Mastered

Answer: A

Explanation:

Statements	Yes	No
When User1 connects to \\Server1.adatum.com\Share1\, the user can take ownership of File1.txt.	<input type="checkbox"/>	<input checked="" type="checkbox"/>
When User2 connects to \\Server1.adatum.com\Share1\, File1.txt is visible.	<input checked="" type="checkbox"/>	<input type="checkbox"/>
When User3 connects to \\Server1.adatum.com\Share1\, File1.txt is visible.	<input checked="" type="checkbox"/>	<input type="checkbox"/>

NEW QUESTION 23

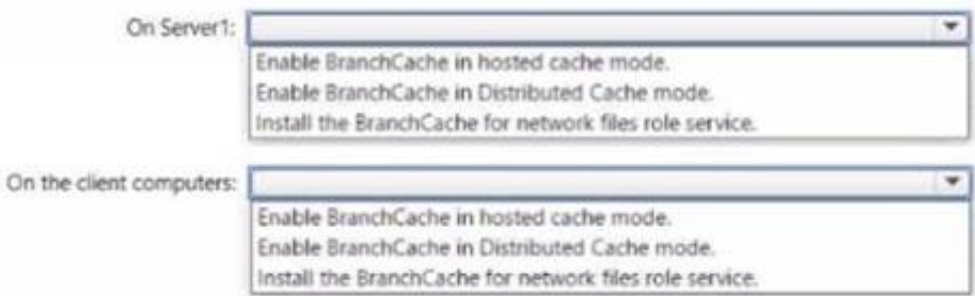
HOTSPOT - (Topic 3)

Your company has offices in Boston and Montreal. The offices are connected by using a 10-Mbps WAN link that is often saturated The office in Boston contains the following:

- An Active Directory Domain Services (AD DS) domain controller named DC1.
- A server named Server1 that runs Windows Server and has the File Server role installed The office in Montreal contains 20 client computers that run Windows 10 Montreal does NOT have any servers.

The company plans to deploy a new line of business (LOB) application to all the client computers. The installation source files for the application are in \\Server\Apps.

Answer Area



- A. Mastered
- B. Not Mastered

Answer: A

Explanation:

Answer Area



NEW QUESTION 27

DRAG DROP - (Topic 3)

You have a server named Server1 that has Windows Admin Center installed. The certificate used by Windows Admin Center was obtained from a certification authority (CA).

The certificate expires.

You need to replace the certificate.

Which three actions should you perform in sequence? To answer, move the appropriate actions from the list of actions to the answer area and arrange them in the correct order.

Actions

Answer Area

- Copy the certificate thumbprint.
- From Internet Information Services (IIS) Manager, bind a certificate.
- Rerun **Windows Admin Center Setup** and select **Change**.
- Rerun **Windows Admin Center Setup** and select **Repair**.
- Rerun **Windows Admin Center Setup** and select **Remove**.



- A. Mastered
- B. Not Mastered

Answer: A

Explanation:

Actions

Answer Area

- Copy the certificate thumbprint.
- From Internet Information Services (IIS) Manager, bind a certificate.
- Rerun **Windows Admin Center Setup** and select **Change**.
- Rerun **Windows Admin Center Setup** and select **Repair**.
- Rerun **Windows Admin Center Setup** and select **Remove**.



From Internet Information Services (IIS) Manager, bind a certificate.

Copy the certificate thumbprint.

Rerun **Windows Admin Center Setup** and select **Change**.

NEW QUESTION 29

HOTSPOT - (Topic 3)

You have an onpremises DNS server named Server1 that runs Windows Server. Server 1 hosts a DNS zone named fabrikam.com

You have an Azure subscription that contains the resources shown in the following table.

Name	Type	Description
Vnet1	Virtual network	Connects to the on-premises network by using a Site-to-Site VPN
VM1	Virtual machine	Runs Windows Server and has the DNS Server role installed
contoso.com	Private DNS zone	Linked to Vnet1
contoso.com	Public DNS zone	Contains the DNS records of all the platform as a service (PaaS) resources

Answer Area

On Vnet1:

Configure VM1 to forward requests for the contoso.com zone to the public DNS zone.
 Configure Vnet1 to use a custom DNS server that is set to the Azure-provided DNS at 168.63.129.16.
 Configure VM1 to forward requests for the contoso.com zone to the Azure-provided DNS at 168.63.129.16.

On the on-premises network:

Configure forwarding for the contoso.com zone to VM1.
 Configure forwarding for the contoso.com zone to the public DNS zone.
 Configure forwarding for the contoso.com zone to the Azure-provided DNS at 168.63.129.16.

- A. Mastered
- B. Not Mastered

Answer: A

Explanation:

Answer Area

On Vnet1:

Configure VM1 to forward requests for the contoso.com zone to the public DNS zone. **1**
 Configure Vnet1 to use a custom DNS server that is set to the Azure-provided DNS at 168.63.129.16.
 Configure VM1 to forward requests for the contoso.com zone to the Azure-provided DNS at 168.63.129.16.

On the on-premises network:

Configure forwarding for the contoso.com zone to VM1.
 Configure forwarding for the contoso.com zone to the public DNS zone.
 Configure forwarding for the contoso.com zone to the Azure-provided DNS at 168.63.129.16. **2**

NEW QUESTION 30

- (Topic 3)

You have an Azure virtual machine named Server1 that runs a network management application. Server1 has the following network configuration.

- * Network interface.Nic1
- * IP address 10.1.1.1/24
- * Connected to: Vnet1/Subnet1

You need connect Server1 to an additional subnet named Vnet1/Subnet2. What should you do?

- A. Create a private endpoint on Subnet2
- B. Add a network interface to server1.
- C. Modify the IP configurations of Nic1.
- D. Add an IP configuration to Nic1.

Answer: B

NEW QUESTION 31

- (Topic 3)

You have an Azure subscription. The subscription contains a virtual machine named VM1 that runs Windows Server.

You build an app named App1.

You need to configure continuous integration and continuous deployment (CI/CD) of App1 to VM1.

What should you create first?

- A. a managed identity
- B. an App Service Environment
- C. an Azure Automation account
- D. an Azure DevOps organization

Answer: D

NEW QUESTION 34

DRAG DROP - (Topic 3)

Your network contains two Active Directory Domain Services (AD DS) forests named contoso.com and fabrikam.com. Contoso.com contains three child domains named amer.contoso.com, apac.contoso.com, and emea.contoso.com. Fabrikam.com contains a child domain named apac.fabrikam.com. A bidirectional forest trust exists between contoso.com and fabrikam.com.

You need to provide users in the contoso.com forest with access to the resources in the fabrikam.com forest. The solution must meet the following requirements:

- Users in contoso.com must only be added directly to groups in the contoso.com forest.
- Permissions to access the resources in fabrikam.com must only be granted directly to groups in the fabrikam.com forest.
- The number of groups must be minimized.

Which type of groups should you use to organize the users and to assign permissions? To answer, drag the appropriate group types to the correct requirements. Each group type may be used once, more than once, or not at all. You may need to drag the split bar between panes or scroll to view content.

NOTE: Each correct selection is worth one point.

Group types	Answer Area
Domain global	Organize users: <input type="text"/>
Domain local	Assign permissions: <input type="text"/>
Universal	

- A. Mastered
- B. Not Mastered

Answer: A

Explanation:

Group types	Answer Area
Domain global	Organize users: <input type="text" value="Domain local"/>
Domain local	Assign permissions: <input type="text" value="Universal"/>
Universal	

NEW QUESTION 38

- (Topic 3)

You have a server named Host1 that has the Hyper-V server role installed. Host1 hosts a virtual machine named VM1.

You have a management server named Server1 that runs Windows Server. You remotely manage Host1 from Server1 by using Hyper-V Manager.

You need to ensure that you can access a USB hard drive connected to Server1 when you connect to VM1 by using Virtual Machine Connection.

Which two actions should you perform? Each correct answer presents part of the solution. NOTE: Each correct selection is worth one point.

- A. From the Hyper-V Settings of Host1, select Allow enhanced session mode
- B. From Disk Management on Host1, attach a virtual hard disk.
- C. From Virtual Machine Connection, switch to a basic session.
- D. From Virtual Machine Connection select Show Options and then select the USB hard drive.
- E. From Disk Management on Host1, select Rescan Disks

Answer: AD

Explanation:

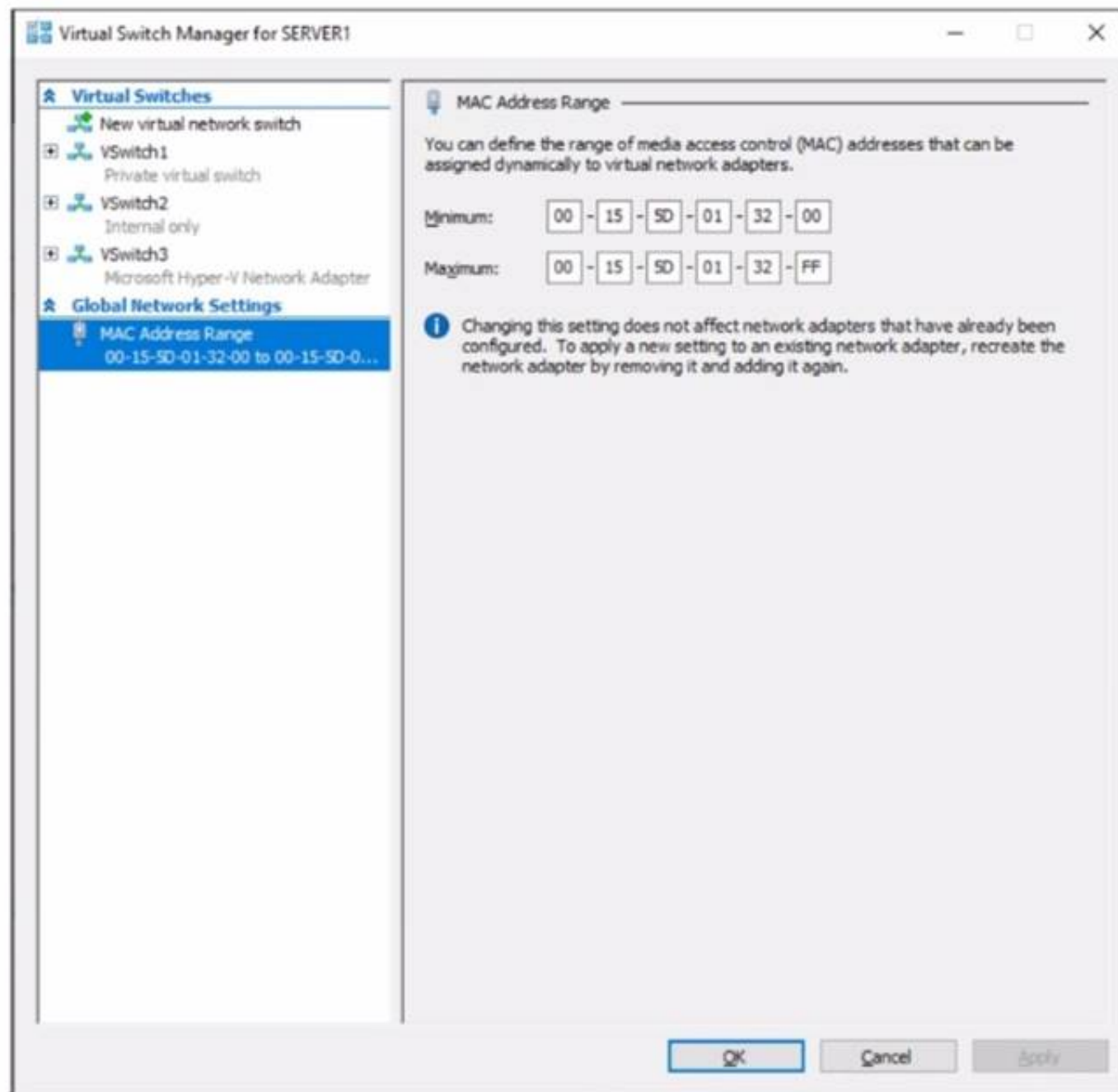
Reference:

<https://docs.microsoft.com/en-us/windows-server/virtualization/hyper-v/learn-more/use-local-resources-on-hyper-v-virtual-machine-with-vmconnect>

NEW QUESTION 41

HOTSPOT - (Topic 3)

You have a server named Server1 that runs Windows Server. Server1 has a single network interface and the Hyper-V virtual switches shown in the following exhibit.



Use the drop-down menus to select the answer choice that completes each statement based on the information presented in the graphic.
NOTE: Each correct selection is worth one point.

Answer Area

On Server1, you can create additional [answer choice].

- private and internal virtual switches only
- internal virtual switches only
- private virtual switches only
- private and internal virtual switches only
- private, internal, and external virtual switches

Server1 can access network shares on virtual machines that are connected to [answer choice].

- VSwitch1, VSwitch2, or VSwitch3
- VSwitch2 only
- VSwitch3 only
- VSwitch1 or VSwitch2 only
- VSwitch2 or VSwitch3 only
- VSwitch1, VSwitch2, or VSwitch3

- A. Mastered
- B. Not Mastered

Answer: A

Explanation:

Answer Area

On Server1, you can create additional [answer choice].

- private and internal virtual switches only
- internal virtual switches only
- private virtual switches only
- private and internal virtual switches only
- private, internal, and external virtual switches

Server1 can access network shares on virtual machines that are connected to [answer choice].

- VSwitch1, VSwitch2, or VSwitch3
- VSwitch2 only
- VSwitch3 only
- VSwitch1 or VSwitch2 only
- VSwitch2 or VSwitch3 only
- VSwitch1, VSwitch2, or VSwitch3

NEW QUESTION 42

- (Topic 3)

You have an on-premises server named Server 1 that runs Windows Server. You have an Azure subscription that contains a virtual network named VNet1. You need to connect Server1 to VNet1 by using Azure Network Adapter. What should you use?

- A. the Azure portal

- B. Azure AD Connect
- C. Device Manager
- D. Windows Admin Center

Answer: B

NEW QUESTION 47

DRAG DROP - (Topic 3)

You have a server named Server1 that runs Windows Server and has the Hyper V server role installed. Server1 hosts a virtual machine named VM1.

Server1 has an NVMe storage device. The device is currently assigned to VM1 by using Discrete Device Assignment.

You need to make the device available to Server1.

Which four actions should you perform in sequence? To answer, move the appropriate actions from the list of actions to the answer area and arrange them in the correct order.

Actions

From Server1, stop VM1.

From Server1, run the `Remove-VMAssignableDevice cmdlet`.

From Server1, run the `Mount-VMHostAssignableDevice cmdlet`.

From Server1, enable the device by using Device Manager.

From VM1, disable the device by using Device Manager.

Answer Area



- A. Mastered
- B. Not Mastered

Answer: A

Explanation:

Actions

From Server1, stop VM1.

From Server1, run the `Remove-VMAssignableDevice cmdlet`.

From Server1, run the `Mount-VMHostAssignableDevice cmdlet`.

From Server1, enable the device by using Device Manager.

From VM1, disable the device by using Device Manager.

Answer Area

From Server1, stop VM1.

From Server1, run the `Remove-VMAssignableDevice cmdlet`.

From Server1, run the `Mount-VMHostAssignableDevice cmdlet`.

From Server1, enable the device by using Device Manager.



NEW QUESTION 52

HOTSPOT - (Topic 3)

Your network contains an Active Directory Domain Services (AD DS) domain. The domain contains the domain controllers shown in the following table.

Name	Description
DC1	Has the schema master, infrastructure master, and domain naming master roles
DC2	Has the PDC emulator and RID master roles and is a global catalog server
DC3	None

You need to configure DC3 to be the authoritative time server for the domain.

Which operations master role should you transfer to DC3, and which console should you use? To answer, select the appropriate options in the answer area.

NOTE: Each correct selection is worth one point.

Answer Area



- A. Mastered
- B. Not Mastered

Answer: A

Explanation:

Answer Area



NEW QUESTION 57

- (Topic 3)

You have an Azure virtual machine named VM1 that runs Windows Server.

You need to ensure that administrators request access to VM1 before establishing a Remote Desktop connection.

What should you configure?

- A. Azure Front Door
- B. Microsoft Defender for Cloud
- C. Azure AD Privileged Identity Management (PIM)
- D. a network security group (NSG)

Answer: B

NEW QUESTION 60

- (Topic 3)

You have an on-premises server named Server1 that runs Windows Server. Server1 contains an app named App1 and a firewall named Firewall1.

You have an Azure subscription.

Internal users connect to App1 by using WebSockets.

You need to make App1 available to users on the internet. The solution must minimize the number of inbound ports open on Firewall 1.

What should you include in the solution?

- A. Microsoft Application Request Routing (ARR) Version 2
- B. Web Application Proxy
- C. Azure Relay
- D. Azure Application Gateway

Answer: C

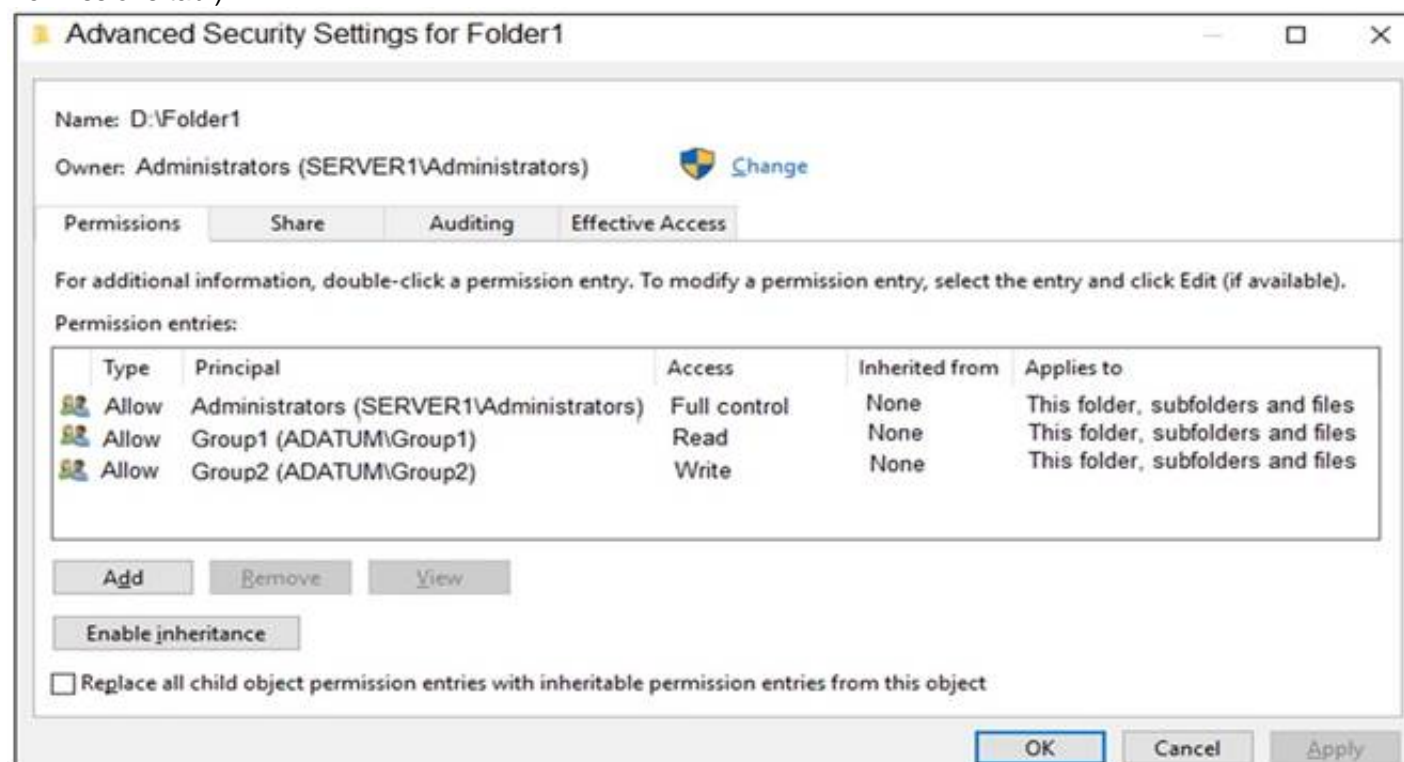
NEW QUESTION 63

HOTSPOT - (Topic 3)

Your network contains an Active Directory Domain Services (AD DS) domain named adatum.com. The domain contains a server named Server1 and the users shown in the following table.

Name	Member of
User1	Group1
User2	Group2
User3	Group3

Server1 contains a folder named D:\Folder1. The advanced security settings for Folder1 are configured as shown in the Permissions exhibit. (Click the Permissions tab.)



Folder1 is shared by using the following configurations:

```
Path           : D:\Folder1
Name           : Share1
ShareType      : FileSystemDirectory
FolderEnumerationMode : Unrestricted
```

The share permissions for Share1 are shown in the following table.

Group	Permission
Group1	Allow – Change
Group3	Allow – Full Control

For each of the following statements, select Yes if the statement is true. Otherwise, select No.
NOTE: Each correct selection is worth one point.

Statements	Yes	No
User1 can read the files in Share1.	<input type="radio"/>	<input type="radio"/>
User3 can delete files in Share1.	<input type="radio"/>	<input type="radio"/>
If User2 connects to \\Server1.adatum.com from File Explorer, Share1 will be listed.	<input type="radio"/>	<input type="radio"/>

- A. Mastered
- B. Not Mastered

Answer: A

Explanation:

To access files in a shared folder, you need to be granted permissions on the folder (NTFS permissions) AND permissions on the share. The most restrictive permission of the folder permissions and share permissions apply.

Box 1: Yes

Group1 has Read access to Folder1 and Change access to Share1. Therefore, User1 can read the files in Share1.

Box 2: No

Group3 has Full Control access to Share1. However, Group3 has no permissions configured Folder1. Therefore, User3 cannot access the files in Share1.

Box 3: Yes

Group2 has write permission to Folder1. However, Group2 has no permission on Share1. Therefore, users in Group2 cannot access files in the shared folder.

Access Based Enumeration when enabled hides files and folders that users do not have permission to access. However, Access Based Enumeration is not enabled on Share1.

This is indicated by the FolderEnumerationMode – Unrestricted setting. Therefore, the share will be visible to User2 even though User2 cannot access the shared folder.

NEW QUESTION 66

DRAG DROP - (Topic 3)

You have a disaggregated cluster deployment. The deployment contains a scale-out file server (SOFS) cluster that runs Windows Server and a compute duster that has the Hyper- V role enabled.

You need to implement Storage Quality of Service (QoS). The solution must ensure that you can control the bandwidth usage between the SOFS cluster and the Hyper-V cluster.

Which cmdlet should you run on each cluster? To answer, drag the appropriate cmdlets to the correct clusters. Each cmdlet may be used once, more than once, or not at all. You may need to drag the split bar between panes or scroll to view content.

NOTE: Each correct selection is worth one point.

Cmdlets

New-StorageQosPolicy

Set-VPHardDiskDrive

Set-VMSan

Answer Area

SOFS:

Hyper-V:

A. Mastered

B. Not Mastered

Answer: A

Explanation:

Cmdlets

New-StorageQosPolicy

Set-VPHardDiskDrive

Set-VMSan

Answer Area

SOFS:

New-StorageQosPolicy

Hyper-V:

Set-VPHardDiskDrive

NEW QUESTION 68

HOTSPOT - (Topic 3)

You have a Windows Server container host named Server1 that has a single disk. On Server1, you plan to start the containers shown in the following table.

Name	Description
Container1	Container1 is a Windows container that contains a web app in development. The container must NOT share a kemel with other containers.
Container2	Container2 is a Linux container that runs a web app. The container requires two static IP addresses.
Container3	Container3 is a Windows container that runs a database. The container requires a static IP address.

Which isolation mode can you use for each container? To answer, select the appropriate options in the answer area.

NOTE: Each correct selection is worth one point.

Container1:

Hyper-V isolation only
Process isolation only
Hyper-V isolation or process isolation

Container2:

Hyper-V isolation only
Process isolation only
Hyper-V isolation or process isolation

Container3:

Hyper-V isolation only
Process isolation only
Hyper-V isolation or process isolation

- A. Mastered
- B. Not Mastered

Answer: A

Explanation:

Container1:

Hyper-V isolation only
Process isolation only
Hyper-V isolation or process isolation

Container2:

Hyper-V isolation only
Process isolation only
Hyper-V isolation or process isolation

Container3:

Hyper-V isolation only
Process isolation only
Hyper-V isolation or process isolation

NEW QUESTION 72

- (Topic 3)

You have an on-premises server named Server1 that runs Windows Server. You have an Azure virtual network that contains an Azure virtual network gateway. You need to connect only Server1 to the Azure virtual network. What should you use?

- A. Azure Network Adapter
- B. a Site-to-Site VPN
- C. an ExpressRoute circuit
- D. Azure Extended Network

Answer: B

Explanation:

Reference:

<https://docs.microsoft.com/en-us/windows-server/manage/windows-admin-center/azure/use-azure-network-adapter>

NEW QUESTION 73

- (Topic 3)

You have an Azure virtual machine named Served that runs a network management application. Server1 has the following network configurations:

- Network interface: Nic1
- IP address. 10.1.1.1/24
- Connected to: VnetVSubnet1

You need to connect Server1 to an additional subnet named Vnet1/Subnet2. What should you do?

- A. Modify the IP configurations of Nic1.
- B. Add a network interface to Server1.
- C. Add an IP configuration to Nic1.
- D. Create a private endpoint on Subnet2

Answer: D

NEW QUESTION 74

- (Topic 3)

Your network contains an Active Directory Domain Services (AD DS) domain. The domain contains a user named User1 and the servers shown in the following table.

Name	Server role	DHCP scope
Server1	DHCP Server	Scope1, Scope2
Server2	DHCP Server	Scope3, Scope4

You need to ensure that User1 can manage only Scope1 and Scope3. What should you do?

- A. Add User1 to the DHCP Administrators group on Server1 and Server2.
- B. Implement IP Address Management (IPAM).
- C. Add User1 to the DHCP Administrators domain local group.
- D. Implement Windows Admin Center and add connections to Server1 and Server2.

Answer: B

NEW QUESTION 75

- (Topic 3)

You have an on-premises network that is connected to an Azure virtual network by using a Site-to-Site VPN. Each network contains a subnet that has the same IP address space. The on-premises subnet contains a virtual machine.

You plan to migrate the virtual machine to the Azure subnet.

You need to migrate the on premises virtual machine to Azure without modifying the IP address. The solution must minim administrative effort.

What should you implement before you perform the migration?

- A. Azure Extended Network
- B. Azure Virtual Network NAT
- C. Azure Application Gateway
- D. Azure virtual network peering

Answer: A

Explanation:

Reference:

<https://docs.microsoft.com/en-us/windows-server/manage/windows-admin-center/azure/azure-extended-network>

NEW QUESTION 77

DRAG DROP - (Topic 3)

You deploy a single-domain Active Directory Domain Services (AD DS) forest named contoso.com.

You deploy a server to the domain and configure the server to run a service.

You need to ensure that the service can use a group managed service account (gMSA) to authenticate.

Which three PowerShell cmdlets should you run in sequence? To answer, move the appropriate cmdlets from the list of cmdlets to the answer area and arrange them in the correct order.

Cmdlets

Add-ADComputerServiceAccount

Set-KdsConfiguration

Add-ADGroupMember

Add-KdsRootKey

New-ADServiceAccount

Install-ADServiceAccount

>

<

Answer Area

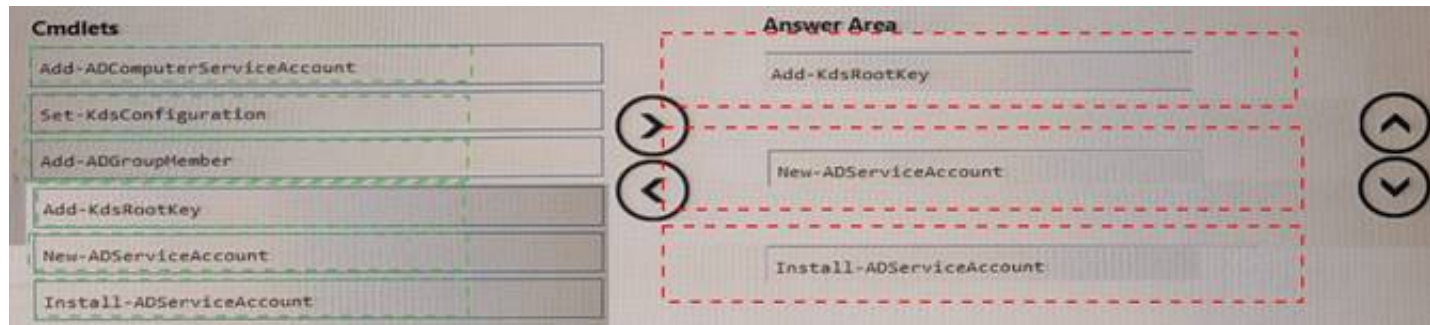
>

<

- A. Mastered
- B. Not Mastered

Answer: A

Explanation:



NEW QUESTION 79

- (Topic 3)

You have an on premises Active Directory Domain Services (AD DS) domain that syncs with an Azure Active Directory (Azure AD) tenant. You plan to implement self-service password reset (SSPR) in Azure AD. You need to ensure that users that reset their passwords by using SSPR can use the new password resources in the AD DS domain. What should you do?

- A. Deploy the Azure AD Password Protection proxy service to the on premises network.
- B. Run the Microsoft Azure Active Directory Connect wizard and select Password writeback.
- C. Grant the Change password permission for the domain to the Azure AD Connect service account.
- D. Grant the impersonate a client after authentication user right to the Azure AD Connect service account.

Answer: B

Explanation:

Reference:
<https://docs.microsoft.com/en-us/azure/active-directory/authentication/tutorial-enable-sspr- writeback>

NEW QUESTION 82

HOTSPOT - (Topic 3)

You need to sync files from an on-premises server named Server1 to Azure by using Azure File Sync. You have a cloud tiering policy that is configured for 30 percent free space and 70 days. Volume f on Server1 is 500 GB. A year ago, you configured E:\Oata on Server1 to sync by using Azure File Sync. The files that are visible in E:\Data are shown in the following table.

Name	Size	Last accessed
File1	200 GB	2 days ago
File2	100 GB	10 days ago
File3	200 GB	60 days ago
File4	50 GB	100 days ago

Volume E does NOT contain any other files. Where are File1 and file3 located? To answer, select the appropriate options In the answer area.

Answer Area

File1: ☐ Server1 only ☐ The Azure file share only ☐ Server1 and the Azure file share

File3: ☐ Server1 only ☐ The Azure file share only ☐ Server 1 and the Azure file share

- A. Mastered
- B. Not Mastered

Answer: A

Explanation:

Answer Area

File1: ☒ Server1 only ☒ The Azure file share only ☐ Server1 and the Azure file share

File3: ☐ Server1 only ☒ The Azure file share only ☒ Server 1 and the Azure file share

NEW QUESTION 85

- (Topic 3)

You have two servers that have the Hyper-V server role installed. The servers are joined to a failover cluster both servers can connect to the same disk on an iSCSi storage device. You plan to use the iSCSI storage to store highly available Hyper-V virtual machines that will support live migration functionality. You need to configure a storage resource in the failover cluster to store the virtual machines. What should you configure?

- A. a storage pool
- B. attributed File System (DFS) Replication
- C. a mirrored volume
- D. Cluster Shared volumes (CSV)

Answer: D

NEW QUESTION 90

- (Topic 3)

Your network contains a multi-site Active Directory Domain Services (AD DS) forest. Each Active Directory site is connected by using manually configured site links and automatically generated connections.

You need to minimize the convergence time for changes to Active Directory. What should you do?

- A. For each site link, modify the options attribute.
- B. For each site link, modify the site link costs.
- C. For each site link, modify the replication schedule.
- D. Create a site link bridge that contains all the site links.

Answer: C

Explanation:

Reference:

<https://docs.microsoft.com/en-us/windows-server/identity/ad-ds/plan/determining-the-interval>

NEW QUESTION 94

HOTSPOT - (Topic 3)

You have a file server named Server1 that runs Windows Server and contains the volumes shown in the following table.

Name	File system
C	NTFS
D	NTFS
E	REFS

On which volumes can you use BitLocker Drive Encryption (BitLocker) and disk quotas? To answer select the appropriate options in the answer area. NOTE Each correct selection is worth one point.

Answer Area

BitLocker:

☐ C only
☐ D only
☐ C and D only
☐ D and E only
☐ C, D, and E

Disk quotas:

☐ C only
☐ D only
☐ C and D only
☐ D and E only
☐ C, D, and E

- A. Mastered
- B. Not Mastered

Answer: A

Explanation:

Answer Area

BitLocker:

☐ C only
☐ D only
☐ C and D only
☒ D and E only
☐ C, D, and E

Disk quotas:

☐ C only
☒ D only
☐ C and D only
☐ D and E only
☐ C, D, and E

NEW QUESTION 95

DRAG DROP - (Topic 3)

You have an Azure subscription. The subscription contains a virtual machine named VM1 that runs Windows Server. VM1 contains a 128-GB operating system disk.

You need to increase the size of volume C on VM1 to 250 GB.

Which four actions should you perform in sequence? To answer, move the appropriate actions from the list of actions to the answer area and arrange them in the correct order.

Actions

Resize VM1.

Redeploy VM1.

Stop VM1.

Resize the operating system disk.

Start VM1.

Resize volume C.

>

<

Answer Area

^

v

- A. Mastered
B. Not Mastered

Answer: A

Explanation:

Actions

Resize VM1.

Redeploy VM1.

Stop VM1.

Resize the operating system disk.

Start VM1.

Resize volume C.

>

<

Answer Area

Stop VM1.

Resize the operating system disk.

Start VM1.

Resize volume C.

^

v

NEW QUESTION 98

- (Topic 3)

Your on-premises network contains an Active Directory domain named contoso.com. You have an Azure AD tenant. You plan to sync contoso.com with the Azure AD tenant by using Azure AD Connect cloud sync. You need to create an account that will be used by Azure AD Connect cloud sync. Which type of account should you create?

- A. system-assigned managed identity
B. group managed service account (gMSA)
C. user
D. InetOrgPerson

Answer: C

NEW QUESTION 99

- (Topic 3)

You have an Azure Active Directory Domain Services (Azure AD DS) domain named contoso.com.

You need to provide an administrator with the ability to manage Group Policy Objects (GPOs). The solution must use the principle of least privilege.

To which group should you add the administrator?

- A. AAD DC Administrators
B. Domain Admins
C. Schema Admins
D. Enterprise Admins
E. Group Policy Creator Owners

Answer: B

Explanation:

Only the Domain Admins group and the Enterprise Admins group can fully manage GPOs. Members of the Group Policy Creator Owners group can create new GPOs but they can't link the GPOs to sites, the domain or OUs and they cannot manage existing GPOs.

NEW QUESTION 100

- (Topic 3)

Your network contains an Active Directory forest. The forest contains two domains named contoso.com and east.contoso.com and the servers shown in the following table.

Name	Domain	Configuration
DC1	contoso.com	Domain controller
Server1	contoso.com	Member server
DC2	east.contoso.com	Domain controller
Server2	east.contoso.com	Member server

Contoso.com contains a user named User1.

You add User1 to the built-in Backup Operators group in contoso.com. Which servers can User1 back up?

- A. DC1 only
B. Server1 only

- C. DC1 and DC2 only
- D. DC1 and Server1 only
- E. DC1, DC2, Server1, and Server2

Answer: A

NEW QUESTION 102

- (Topic 3)

Your network contains an Active Directory Domain Services (AD DS) domain named contoso.com.

You need to identify which server is the PDC emulator for the domain.

Solution: From Active Directory Sites and Services, you right-click Default-First-Site-Name in the console tree, and then select Properties.

Does this meet the goal?

- A. Yes
- B. No

Answer: B

NEW QUESTION 106

- (Topic 3)

You have an Azure virtual machine named VM1 that runs Windows Server.

You need to configure the management of VM1 to meet the following requirements:

- Require administrators to request access to VM1 before establishing a Remote Desktop connection.
 - Limit access to VM1 from specific source IP addresses.
 - Limit access to VM1 to a specific management port.
- What should you configure?

- A. a network security group (NSG)
- B. Azure Active Directory (Azure AD) Privileged Identity Management (PIM)
- C. Azure Front Door
- D. Microsoft Defender for Cloud

Answer: D

Explanation:

Reference:

<https://docs.microsoft.com/en-us/azure/defender-for-cloud>

NEW QUESTION 109

- (Topic 3)

Your network contains an on-premises Active Directory Domain Services (AD DS) domain named contoso.com. The domain contains three servers that run Windows Server and have the Hyper-V server role installed. Each server has a Switch Embedded Teaming (SET) team.

You need to verify that Remote Direct Memory Access (RDMA) and all the required Windows Server settings are configured properly on each server.

What should you use?

- A. Server Manager
- B. the validate-DCB cmdlet
- C. the Get-NetAdapter cmdlet
- D. Failover Cluster Manager

Answer: B

Explanation:

Reference: <https://github.com/Microsoft/Validate-DCB>

NEW QUESTION 113

- (Topic 3)

You have five file servers that run Windows Server.

You need to block users from uploading video files that have the .mov extension to shared folders on the file servers. All other types of files must be allowed. The solution must minimize administrative effort.

What should you create?

- A. a Dynamic Access Control central access policy
- B. a file screen
- C. a Dynamic Access Control central access rule
- D. a data loss prevention (DLP) policy

Answer: B

Explanation:

Reference:

<https://docs.microsoft.com/en-us/windows-server/storage/fsrm/file-screening-management>

NEW QUESTION 118

HOTSPOT - (Topic 3)

You have an on-premises Active Directory Domain Services (AD DS) domain that syncs with an Azure Active Directory (Azure AD) tenant.

You have an on-premises web app named WebApp1 that only supports Kerberos authentication.

You need to ensure that users can access WebApp1 by using their Azure AD account. The solution must minimize administrative effort.

What should you configure? To answer, select the appropriate options in the answer area. NOTE: Each correct selection is worth one point.

Answer Area

In Azure AD:

- ☐ The Azure AD Application Proxy connector
- ☐ The Azure AD Application Proxy service
- ☐ Web Application Proxy

On-premises:

- ☐ The Azure AD Application Proxy connector
- ☐ The Azure AD Application Proxy service
- ☐ Web Application Proxy

- A. Mastered
B. Not Mastered

Answer: A

Explanation:

Answer Area

In Azure AD:

- ☒ The Azure AD Application Proxy connector
- ☒ The Azure AD Application Proxy service
- ☐ Web Application Proxy

On-premises:

- ☒ The Azure AD Application Proxy connector
- ☒ The Azure AD Application Proxy service
- ☐ Web Application Proxy

NEW QUESTION 120

HOTSPOT - (Topic 3)

You have a Windows Server 2022 container host named Host1 and a container registry that contains the container images shown in the following table.

Name	Container base image OS version
Image1	Windows Server 2022
Image2	Windows Server 2019

You need to run the containers on Host1

Which isolation mode can you use for each image? To answer, select the appropriate options in the answer area.

NOTE: Each correct selection is worth one point.

Answer Area

Image1:

- ☒ Hyper-V isolation or process isolation
- ☐ Hyper-V isolation only
- ☐ Process isolation only
- ☐ Hyper-V isolation or process isolation

Image2:

- ☒ Hyper-V isolation only
- ☐ Hyper-V isolation only
- ☐ Process isolation only
- ☐ Hyper-V isolation or process isolation

Answer:

Answer Area

Image1:

- ☒ Hyper-V isolation or process isolation
- ☐ Hyper-V isolation only
- ☐ Process isolation only
- ☐ Hyper-V isolation or process isolation

Image2:

- ☒ Hyper-V isolation only
- ☐ Hyper-V isolation only
- ☐ Process isolation only
- ☐ Hyper-V isolation or process isolation

- A. Mastered
B. Not Mastered

Answer: A

NEW QUESTION 121

HOTSPOT - (Topic 3)

Your network contains an Azure AD Domain Services domain named contoso.com.

You need to configure a password policy for the local user accounts on the Azure virtual machines joined to contoso.com.

What should you do? To answer, select the appropriate options in the answer area. NOTE: Each correct selection is worth one point.

Answer Area

Sign in by using a user account that is a member of the:

AAD DC Administrators group
AAD DC Administrators group
Administrators group
Domain Admins group

Use a Group Policy Object (GPO) linked to the:

AADDC Users organizational unit (OU)
AADDC Computers organizational unit (OU)
AADDC Users organizational unit (OU)
Computers container

Answer:

Answer Area

Sign in by using a user account that is a member of the:

AAD DC Administrators group
AAD DC Administrators group
Administrators group
Domain Admins group

Use a Group Policy Object (GPO) linked to the:

AADDC Users organizational unit (OU)
AADDC Computers organizational unit (OU)
AADDC Users organizational unit (OU)
Computers container

- A. Mastered
B. Not Mastered

Answer: A

NEW QUESTION 122

- (Topic 3)

Note: This question is part of a series of questions that present the same scenario. Each question in the series contains a unique solution that might meet the stated goals. Some question sets might have more than one correct solution, while others might not have a correct solution.

After you answer a question in this section, you will NOT be able to return to it. As a result, these questions will not appear in the review screen.

You are planning the deployment of DNS to a new network.

You have three internal DNS servers as shown in the following table.

Name	Location	IP address	Local DNS zone
Server1	Montreal	10.0.1.10	contoso.local
Server2	Toronto	10.0.2.10	east.contoso.local
Server3	Seattle	10.0.3.10	west.contoso.local

The contoso.local zone contains zone delegations for east.conloso.local and west.contoso.local. All the DNS servers use root hints.

You need to ensure that all the DNS servers can resolve the names of all the internal namespaces and internet hosts.

Solution: On Server2 and Server3, you configure a conditional forwarder for contoso.local. Does this meet the goal?

- A. Yes
B. No

Answer: B

Explanation:

[https://docs.microsoft.com/en-us/previous-versions/windows/it-pro/windows-server-2008-r2-and-2008/cc794735\(v=ws.10\)](https://docs.microsoft.com/en-us/previous-versions/windows/it-pro/windows-server-2008-r2-and-2008/cc794735(v=ws.10))

NEW QUESTION 123

- (Topic 3)

You have an Azure subscription that contains the storage accounts shown in the following table.

Name	Location	File share	Blob container
storage1	West US	share1	None
storage2	West US	share2	container2
storage3	Central US	share3	None
storage4	Central US	share4	container4

In the West US Azure region, you create a storage sync service named SyncA. You plan to create a sync group named GroupA.

What is the maximum number of cloud endpoints you can use with GroupA?

- A. 1
B. 2
C. 3
D. 4

Answer: B

NEW QUESTION 128

HOTSPOT - (Topic 3)

You have an Azure subscription named sub1 and 500 on-premises virtual machines that run Windows Server.

You plan to onboard the on-premises virtual machines to Azure Arc by running the Azure Arc deployment script

You need to create an identity that mil be used by the script to authenticate access to sub1. The solution must use the principle of least privilege.

How should you complete the command? To answer, select the appropriate options in the answer area.

NOTE: Each correct selection is worth one point.

Answer Area



- A. Mastered
- B. Not Mastered

Answer: A

Explanation:

Answer Area



NEW QUESTION 130

- (Topic 3)

You have a server named Server1 that runs Windows Server and contains a file share named Share1.

You need to prevent users from stoning MP4 files in Share1. The solution must ensure that the users can store other types of files in the share.

What should you configure on Server1?

- A. File Management Tasks
- B. NTFS Quotas
- C. NTFS permissions
- D. file screens

Answer: D

NEW QUESTION 134

HOTSPOT - (Topic 3)

You have on-premises file servers that run Windows Server as shown in the following table.

Name	Relevant folder
Server1	D:\Folder1, E:\Folder2
Server2	D:\Data

You have the Azure file shares shown in the following table.

Name	Location
share1	East US
share2	East US

You add a Storage Sync Service named Sync1 and an Azure File Sync sync group named Group1. Group1 uses share1 as a cloud endpoint.

You register Server1 and Server2 with Sync1. You add D:\Folder1 from Server1 as a server endpoint in Group1.

For each of the following statements, select Yes if the statement is true. Otherwise, select No.

NOTE: Each correct selection is worth one point.

Statements

Yes

No

You can add share2 as a cloud endpoint in Group1.

☐
☐

You can add E:\Folder2 from Server1 as a server endpoint in Group1.

☐
☐

You can add D:\Data from Server2 as a server endpoint in Group1.

☐
☐

- A. Mastered
- B. Not Mastered

Answer: A

Explanation:

Statements	Yes	No
You can add share2 as a cloud endpoint in Group1.	<input type="checkbox"/>	<input checked="" type="checkbox"/>
You can add E:\Folder2 from Server1 as a server endpoint in Group1.	<input checked="" type="checkbox"/>	<input type="checkbox"/>
You can add D:\Data from Server2 as a server endpoint in Group1.	<input checked="" type="checkbox"/>	<input type="checkbox"/>

NEW QUESTION 136

HOTSPOT - (Topic 3)

You have a Group Policy Object (GPO) named GPO1 that contains user settings only.

You plan to apply GPO1 to a global security group named Group1.

You link GP01 to the domain, and you remove all the permissions granted to the Authenticated Users group.

You need to configure permissions for GP01 to meet the following requirements.

- GPO1 must apply only to the users in Group 1.
- The solution must use the principle of least privilege

Answer Area



- A. Mastered
- B. Not Mastered

Answer: A

Explanation:

Answer Area



NEW QUESTION 140

- (Topic 3)

You have an on-premises Active Directory Domain Services (AD DS) domain that syncs with an Azure Active Directory (Azure AD) tenant. You plan deploy 100 new Azure virtual machines that will run Windows Server. You need to ensure that each new virtual machine is joined to the AD DS domain. What should you use?

- A. Azure AD Connect
- B. a Group Policy Object (GPO)
- C. an Azure Resource Manager (ARM) template
- D. an Azure management group

Answer: C

Explanation:

Reference:

<https://www.ludovicmedard.com/create-an-arm-template-of-a-virtual-machine-automatically-joined-to-a-domain/>

NEW QUESTION 145

HOTSPOT - (Topic 3)

Your network contains an Active Directory Domain Services (AD DS) domain named contoso.com. The domain contains the VPN servers shown in the following table.

Name	IP address
VPN1	172.16.0.254
VPN2	131.10.15.254
VPN3	10.10.0.254

You have a server named NPS1 that has Network Policy Server (NPS) installed. NPS1 has the following RADIUS clients:

Name : NPSclient1
Address : 172.16.0.254
AuthAttributeRequired : False
SharedSecret : Pa55w.rd
VendorName : RADIUS Standard
Enabled : False

Name : NPSclient2
Address : 131.10.15.254
AuthAttributeRequired : False
SharedSecret : Pa55w.rd
VendorName : RADIUS Standard
Enabled : True

Name : NPSclient3
Address : 172.16.1.254
AuthAttributeRequired : False
SharedSecret : Pa55w.rd
VendorName : RADIUS Standard
Enabled : True

VPN1, VPN2, and VPN3 use NPS1 for RADIUS authentication. All the users in contoso.com are allowed to establish VPN connections. For each of the following statements, select Yes If the statement is true. Otherwise, select No. NOTE: Each correct selection is worth one point.

Answer Area

Statements	Yes	No
The contoso.com users can authenticate successfully when they establish a VPN connection to VPN1.	<input type="radio"/>	<input type="radio"/>
The contoso.com users can authenticate successfully when they establish a VPN connection to VPN2.	<input type="radio"/>	<input type="radio"/>
The contoso.com users can authenticate successfully when they establish a VPN connection to VPN3.	<input type="radio"/>	<input type="radio"/>

- A. Mastered
B. Not Mastered

Answer: A

Explanation:

Answer Area

Statements	Yes	No
The contoso.com users can authenticate successfully when they establish a VPN connection to VPN1.	<input type="radio"/>	<input checked="" type="radio"/>
The contoso.com users can authenticate successfully when they establish a VPN connection to VPN2.	<input checked="" type="radio"/>	<input type="radio"/>
The contoso.com users can authenticate successfully when they establish a VPN connection to VPN3.	<input type="radio"/>	<input checked="" type="radio"/>

NEW QUESTION 146

DRAG DROP - (Topic 3)

You have a server named Server 1 that runs Windows Server and has the Hyper-V server role installed.

Server1 hosts a virtual machine named VM1. Server1 has an NV Me storage device that is assigned to VM1 by using Discrete Device Assignment.

You need to make the device available to the host.

Which four actions should you perform in sequence? To answer, move the appropriate actions from the list of actions to the answer area and arrange them in the correct order.

Actions

- From VM1, disable the device by using Device Manager.
- From Server1, stop VM1.
- From Server1, run the Remove-VMAssignableDevice cmdlet.
- From Server1, run the Mount-VMHostAssignableDevice cmdlet.
- From Server1, enable the device by using Device Manager.

Answer Area



- A. Mastered

B. Not Mastered

Answer: A

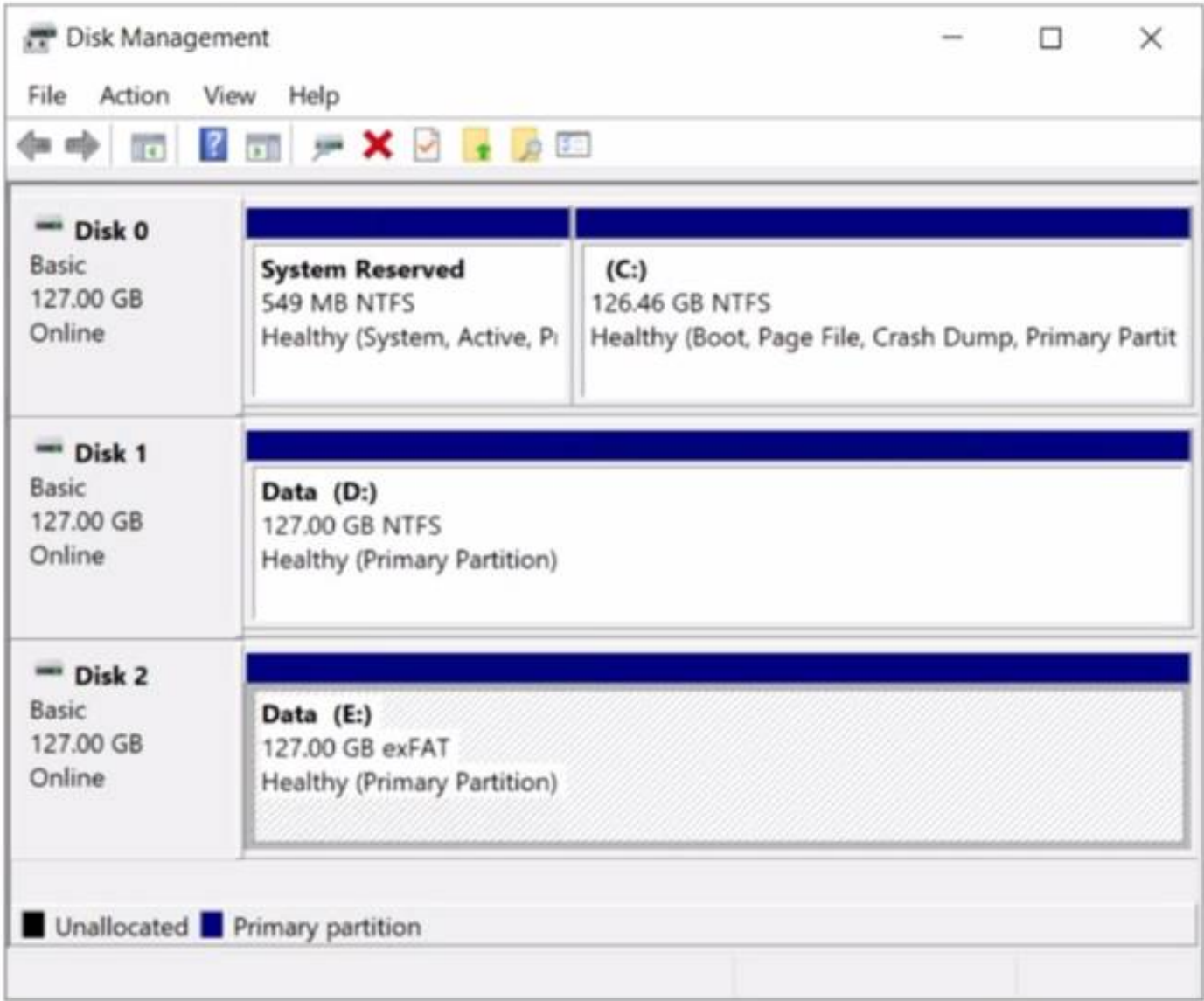
Explanation:

Actions	Answer Area
From VM1, disable the device by using Device Manager.	From Server1, stop VM1.
From Server1, stop VM1.	From Server1, run the Remove-VMAssignableDevice cmdlet.
From Server1, run the Remove-VMAssignableDevice cmdlet.	From Server1, run the Mount-VMHostAssignableDevice cmdlet.
From Server1, run the Mount-VMHostAssignableDevice cmdlet.	From Server1, enable the device by using Device Manager.
From Server1, enable the device by using Device Manager.	

NEW QUESTION 147

- (Topic 3)

You have a server named Server1 that runs Windows Server. The disks on Server1 are configured as shown in the following exhibit.



You need to convert volume E to ReFS. The solution must meet the following requirements:

- Preserve the existing data on volume E.
- Minimize administrative effort. What should you do first?

- A. Take Disk 2 offline.
- B. Back up the data on volume E.
- C. Convert Disk 2 to a dynamic disk.
- D. Runconvert.exe.

Answer: B

NEW QUESTION 152

- (Topic 3)

You plan to deploy a containerized application that requires .NET Core.

You need to create a container image for the application. The image must be as small as possible.

Which base image should you use?

- A. Nano Server
- B. Server Cote
- C. Windows Server
- D. Windows

Answer: A

Explanation:

Reference:

<https://techcommunity.microsoft.com/t5/containers/nano-server-x-server-core-x-server-which-base-image-is-the-right/ba-p/2835785>

NEW QUESTION 154

- (Topic 3)

You have an on-premises server named Server1 that runs Windows Server. You have an Azure subscription that contains a virtual network named VNet1. You need to connect Server1 to VNet1 by using Azure Network Adapter. What should you use?

- A. Azure AD Connect
- B. Device Manager
- C. the Azure portal
- D. Windows Admin Center

Answer: D

NEW QUESTION 155

- (Topic 3)

Your network contains an Active Directory Domain Services (AD DS) domain. The domain contains the resources shown in the following table.

Name	Description
CLIENT1	Client computer that runs Windows
DC1	Domain controller
Server1	File server
Server2	File server

You plan to replicate a volume from Server1 to Server2 by using Storage Replica. You need to configure Storage Replica. Where should you install Windows Admin Center?

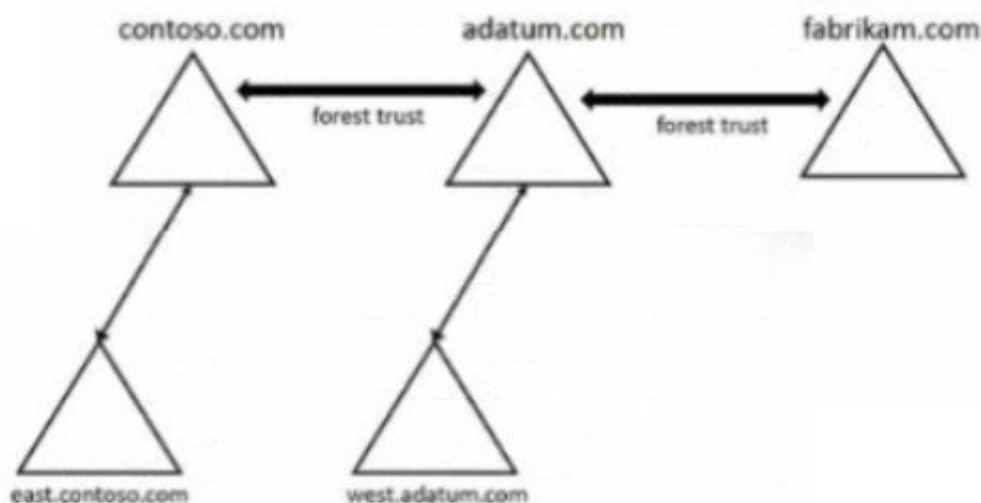
- A. Server 1
- B. CLIENT1
- C. DC1
- D. Server2

Answer: A

NEW QUESTION 160

HOTSPOT - (Topic 3)

Your network contains three Active Directory Domain Services (AD DS) forest as shown in the following exhibit.



The network contains the users shown in the following table.

Name	Domain
User1	east.contoso.com
User2	fabrikam.com

The network contains the security groups shown in the following table.

Name	Type	Domain
Group1	Domain local	west.adatum.com
Group2	Universal	contoso.com
Group3	Universal	east.contoso.com

For each of the following statements, select Yes if the statement is true, Otherwise, select No.

NOTE: Each correct selection is worth one point.

Answer Area

Statements	Yes	No
You can add User1 to Group1.	<input type="radio"/>	<input type="radio"/>
You can add User2 to Group3.	<input type="radio"/>	<input type="radio"/>
You can grant Group2 permissions to the resources in the fabrikam.com domain.	<input type="radio"/>	<input type="radio"/>

- A. Mastered
- B. Not Mastered

Answer: A

Explanation:

NEW QUESTION 165

- (Topic 3)

You have a server named Server1 that hosts Windows containers. You plan to deploy an application that will have multiple containers. Each container will be You need to create a Docker network that supports the deployment of the application. Which type of network should you create?

- A. transparent
- B. l2bridge
- C. NAT
- D. l2tunnel

Answer: A

Explanation:

Reference:

<https://docs.microsoft.com/en-us/virtualization/windowscontainers/container-networking/network-drivers-topologies>

NEW QUESTION 169

HOTSPOT - (Topic 3)

You have an Azure subscription that contains the storage accounts shown in the following table.

Name	Location	Kind	Container	File share
storage1	East US	StorageV2	cont1	share1
storage2	East US	BlockBlobStorage	cont2	Not applicable
storage3	East US	FileStorage	Not applicable	share3
storage4	Central US	StorageV2	cont4	share4

In the East US Azure region, you create a storage sync service named Synd. You need to create a sync group in Synd. Which storage accounts can you use, and what can you specify as the cloud endpoints? To answer, select the appropriate options in the answer area. NOTE: Each correct selection is worth one point.

Answer Area

Storage accounts:
storage1 only
storage1 and storage3 only
storage1 and storage4 only
storage1, storage2, and storage3 only
storage1, storage2, storage3, and storage4

Cloud endpoints:
cont1 and cont2 only
share1 and share3 only
cont1, cont2, and cont4 only
share1, share3, and share4 only
cont1, cont2, share1, and share3 only
cont1, cont2, cont4, share1, share3, and share4

- A. Mastered
B. Not Mastered

Answer: A

Explanation:

Answer Area

Storage accounts:
storage1 only
storage1 and storage3 only
storage1 and storage4 only
storage1, storage2, and storage3 only
storage1, storage2, storage3, and storage4

Cloud endpoints:
cont1 and cont2 only
share1 and share3 only
cont1, cont2, and cont4 only
share1, share3, and share4 only
cont1, cont2, share1, and share3 only
cont1, cont2, cont4, share1, share3, and share4

NEW QUESTION 173

- (Topic 3)

You have a server named Server1 that runs Windows Server and contains two drives named C and D. Server1 hosts multiple file shares. You enable Data Deduplication on drive D and select the General purpose file server workload. You need to minimize the space consumed by files that were recently modified or deleted. What should you do?

- A. Run the set-dedupvolume cmdlet and configure the scrubbing job.
B. Run the Set-DedupSchedule Cmdlet and configure a GarbageCollection job.
C. Run the set-Dedupvoiume cmdlet and configure the InputOutputScale settings.
D. Run the Set-DedupSchedule cmdlet and configure the optimization job.

Answer: B

NEW QUESTION 178

HOTSPOT - (Topic 3)

You have an on-premises server named Server1 that runs Windows Server and has internet connectivity.

You have an Azure subscription.

You need to monitor Server1 by using Azure Monitor.

Which resources should you create in the subscription, and what should you install on Server1? To answer, select the appropriate options in the answer area.

NOTE: Each correct selection is worth one point.

In the subscription, create:

<input type="checkbox"/>	An Azure Files storage account
<input type="checkbox"/>	A Log Analytics workspace
<input type="checkbox"/>	An Azure SQL database and a data collection rule
<input type="checkbox"/>	An Azure Blob Storage account and a data collection rule

On Server1, install:

<input type="checkbox"/>	The Azure Monitor agent
<input type="checkbox"/>	The Analytics gateway
<input type="checkbox"/>	The Device Health Attestation server role

- A. Mastered

B. Not Mastered

Answer: A

Explanation:

NEW QUESTION 179

HOTSPOT - (Topic 3)

Your on-premises network contains an Active Directory domain named contoso.com and 500 servers that run Windows Server. All the servers are Azure Arc-enabled and joined to contoso.com.

You need to implement PowerShell Desired State Configuration (DSC) on all the servers. The solution must minimize administrative effort.

Where should you store the DSC scripts, and what should you use to apply DSC to the servers? To answer, select the appropriate options in the answer area.

NOTE: Each correct selection is worth one point.

Answer Area

Store in:

Use:

A. Mastered

B. Not Mastered

Answer: A

Explanation:

Answer Area

Store in:

Use:

NEW QUESTION 182

HOTSPOT - (Topic 3)

You have a server named Server1 that runs Windows Server and contains three volumes named C, D, and E. Files are stored on Server1 as shown in the following table.

Name	On volume	Size
File1	C	500 KB
File2	D	10 KB
File3	D	1 MB

For volume D, Data Deduplication is enabled and set to General purpose file server. You perform the following actions:

- Move File1 to volume D.
- Copy File2 to volume D and name the copy File4.
- Move File3 to volume E

For each of the following statements, select Yes if the statement is true. Otherwise, select No. NOTE: Each correct selection is worth one point.

Statements	Yes	No
File1 is deduplicated after the deduplication job runs.	<input type="radio"/>	<input type="radio"/>
File3 is deduplicated after the deduplication job runs.	<input type="radio"/>	<input type="radio"/>
File4 is deduplicated after the deduplication job runs.	<input type="radio"/>	<input type="radio"/>

- A. Mastered
B. Not Mastered

Answer: A

Explanation:

Statements	Yes	No
File1 is deduplicated after the deduplication job runs.	<input type="radio"/>	<input checked="" type="radio"/>
File3 is deduplicated after the deduplication job runs.	<input type="radio"/>	<input checked="" type="radio"/>
File4 is deduplicated after the deduplication job runs.	<input checked="" type="radio"/>	<input type="radio"/>

NEW QUESTION 187

HOTSPOT - (Topic 2)

You need to configure Azure File Sync to meet the file sharing requirements. What should you do? To answer, select the appropriate options in the answer area.

NOTE Each correct selection is worth one point.

Minimum number of sync groups to create:	<div><div>1</div><div>2</div><div>3</div><div>4</div></div>
Minimum number of Storage Sync Services to create:	<div><div>1</div><div>2</div><div>3</div><div>4</div></div>

- A. Mastered
B. Not Mastered

Answer: A

Explanation:

Minimum number of sync groups to create:	<div><div>1</div><div>2</div><div>3</div><div>4</div></div>
Minimum number of Storage Sync Services to create:	<div><div>1</div><div>2</div><div>3</div><div>4</div></div>

NEW QUESTION 188

DRAG DROP - (Topic 2)

Which three actions should you perform in sequence to meet the security requirements for Webapp1? To answer, move the appropriate actions from the list of actions to the answer area and arrange them in the correct order.

Actions	Answer Area
Create a standalone managed service account (sMSA) in AD DS.	
Configure the IIS application pool to run as Network Service.	
Configure the IIS application pool to run as a specified user account.	
Create a group managed service account (gMSA) in Active Directory.	
Create a system-assigned managed identity in Azure AD.	
Create a user-assigned managed identity in Azure AD.	
Create the Key Distribution Services (KDS) root key in AD DS.	

- A. Mastered
B. Not Mastered

Answer: A

Explanation:

Actions	Answer Area
Create a standalone managed service account (sMSA) in AD DS.	Configure the IIS application pool to run as Network Service.
Configure the IIS application pool to run as Network Service.	
Configure the IIS application pool to run as a specified user account.	Create a group managed service account (gMSA) in Active Directory.
Create a group managed service account (gMSA) in Active Directory.	Create the Key Distribution Services (KDS) root key in AD DS.
Create a system-assigned managed identity in Azure AD.	
Create a user-assigned managed identity in Azure AD.	
Create the Key Distribution Services (KDS) root key in AD DS.	

NEW QUESTION 192

- (Topic 2)

You need to configure the Group Policy settings to ensure that the Azure Virtual Desktop session hosts meet the security requirements. What should you configure?

- A. security filtering for the link of GP04
B. security filtering for the link of GPO1
C. loopback processing in GPO4
D. the Enforced property for the link of GP01
E. loopback processing in GPO1
F. the Enforced property for the link of GP04

Answer: C

NEW QUESTION 193

- (Topic 2)

You need to implement a name resolution solution that meets the networking requirements. Which two actions should you perform? Each correct answer presents part of the solution.

NOTE: Each correct selection is worth one point

- A. Create an Azure private DNS zone named corp.fabhkam.com.
B. Create a virtual network link in the coip.fabnkam.c om Azure private DNS zone.
C. Create an Azure DNS zone named corp.fabrikam.com.
D. Configure the DNS Servers settings for Vnet1.
E. Enable autoregistration in the corp.fabnkam.com Azure private DNS zone.
F. On DC3, install the DNS Server role.
G. Configure a conditional forwarder on DC3.

Answer: DF

Explanation:

Virtual machines in an Azure virtual network receive their DNS configuration from the DNS settings configured on the virtual network. You need to configure the Azure virtual network to use DC3 as the DNS server. Then all virtual machines in the virtual network will use DC3 and their DNS server.

NEW QUESTION 198

DRAG DROP - (Topic 2)

You need to meet the security requirements for passwords.

Where should you configure the components for Azure AD Password Protection? To answer, drag the appropriate components to the correct locations. Each component may be used once, more than once, or not at all. You may need to drag the split bar between panes or scroll to view content.

NOTE Each correct selection is worth one point.

- A. Mastered
- B. Not Mastered

Answer: A

Explanation:

NEW QUESTION 201

- (Topic 1)

You need to meet the technical requirements for VM2. What should you do?

- A. Implement shielded virtual machines.
- B. Enable the Guest services integration service.
- C. Implement Credential Guard.
- D. Enable enhanced session mode.

Answer: D

NEW QUESTION 205

- (Topic 1)

You need to meet the technical requirements for Server1. Which users can currently perform the required tasks?

- A. Admin1 only
- B. Admin3 only
- C. Admin1 and Admin3 only
- D. Admin1 Admin2. and Admm3

Answer: C

NEW QUESTION 207

- (Topic 2)

You need to implement an availability solution for DHCP that meets the networking requirements.

Which two actions should you perform? Each correct answer presents part of the solution. NOTE: Each correct selection is worth one point.

- A. On DHCP1. create a scope that contains 25 percent of the IP addresses from Scope2.
- B. On the router in each office, configure a DHCP relay.
- C. DHCP2. configure a scope that contains 25 percent of the IP addresses from Scope 1 .
- D. On each DHCP server, install the Failover Clustering feature and add the DHCP clusterrole.
- E. On each DHCP scope, configure DHCP failover.

Answer: BE

Explanation:

Reference:

[https://docs.microsoft.com/en-us/previous-versions/windows/it-pro/windows-server-2012-r2-and-2012/hh831385\(v=ws.11\)](https://docs.microsoft.com/en-us/previous-versions/windows/it-pro/windows-server-2012-r2-and-2012/hh831385(v=ws.11))

NEW QUESTION 211

- (Topic 1)

You need to meet the technical requirements for User1. The solution must use the principle of least privilege.

What should you do?

- A. Add Users1 to the Server Operators group in contoso.com.
- B. Create a delegation on contoso.com.
- C. Add Users1 to the Account Operators group in contoso.com.
- D. Create a delegation on OU3.

Answer: D

Explanation:

Reference:
<https://docs.microsoft.com/en-us/windows-server/identity/ad-ds/plan/delegating-administration-of-account-ous-and-resource-ous>

NEW QUESTION 213

- (Topic 1)
You need to meet the technical requirements for VM3 On which volumes can you enable Data Deduplication?

- A. D and E only
- B. C, D, E, and F
- C. D only
- D. C and D only
- E. D, E, and F only

Answer: A

Explanation:

Reference:
<https://docs.microsoft.com/en-us/windows-server/storage/data-deduplication/interop>

NEW QUESTION 218

HOTSPOT - (Topic 1)
Which groups can you add lo Group3 and Groups? To answer, select the appropriate options in the answer area. NOTE Each correct selection is worth one point.

Answer Area

Group3:

Group6 only

Group1 and Group2 only

Group1 and Group4 only

Group1, Group2, Group4, and Group5 only

Group1, Group2, Group4, Group5, and Group6

Group5:

Group1 only

Group4 only

Group6 only

Group2 and Group4 only

Group4 and Group6 only

- A. Mastered
- B. Not Mastered

Answer: A

Explanation:

Answer Area

Group3:

Group6 only

Group1 and Group2 only

Group1 and Group4 only

Group1, Group2, Group4, and Group5 only

Group1, Group2, Group4, Group5, and Group6

Group5:

Group1 only

Group4 only

Group6 only

Group2 and Group4 only

Group4 and Group6 only

NEW QUESTION 222

.....

Thank You for Trying Our Product

* 100% Pass or Money Back

All our products come with a 90-day Money Back Guarantee.

* One year free update

You can enjoy free update one year. 24x7 online support.

* Trusted by Millions

We currently serve more than 30,000,000 customers.

* Shop Securely

All transactions are protected by VeriSign!

100% Pass Your AZ-800 Exam with Our Prep Materials Via below:

<https://www.certleader.com/AZ-800-dumps.html>