

Exam Questions SC-300

Microsoft Identity and Access Administrator

<https://www.2passeasy.com/dumps/SC-300/>



NEW QUESTION 1

- (Exam Topic 1)

You need to configure the MFA settings for users who connect from the Boston office. The solution must meet the authentication requirements and the access requirements.

What should you configure?

- A. named locations that have a private IP address range
- B. named locations that have a public IP address range
- C. trusted IPs that have a public IP address range
- D. trusted IPs that have a private IP address range

Answer: C

Explanation:

Reference:

<https://docs.microsoft.com/en-us/azure/active-directory/conditional-access/location-condition>

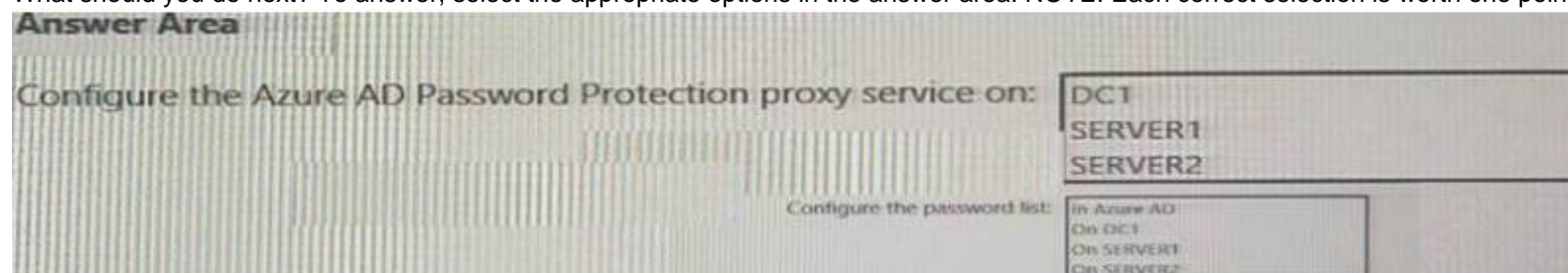
Location offer your country set, IP ranges MFA trusted IP and corporate network VPN gateway IP address: This is the public IP address of the VPN device for your on-premises network. The VPN device requires an IPv4 public IP address. Specify a valid public IP address for the VPN device to which you want to connect. It must be reachable by Azure Client Address space: List the IP address ranges that you want routed to the local on-premises network through this gateway. You can add multiple address space ranges. Make sure that the ranges you specify here do not overlap with ranges of other networks your virtual network connects to, or with the address ranges of the virtual network itself.

NEW QUESTION 2

- (Exam Topic 1)

You need to implement password restrictions to meet the authentication requirements. You install the Azure AD password Protection DC agent on DC1.

What should you do next? To answer, select the appropriate options in the answer area. NOTE: Each correct selection is worth one point.



- A. Mastered
- B. Not Mastered

Answer: A

Explanation:

Server1 On DC1

NEW QUESTION 3

- (Exam Topic 1)

You need to implement on-premises application and SharePoint Online restrictions to meet the authentication requirements and the access requirements.

What should you do? To answer, select the appropriate options in the answer area. NOTE: Each correct selection is worth one point.

For on-premises applications:

- ☐ Configure Cloud App Security policies.
- ☐ Modify the User consent settings for the enterprise applications.
- ☐ Publish the applications by using Azure AD Application Proxy.

For SharePoint Online:

- ☐ Configure Cloud App Security policies.
- ☐ Modify the User consent settings for the enterprise applications.
- ☐ Publish an application by using Azure AD Application Proxy.

- A. Mastered
- B. Not Mastered

Answer: A

Explanation:

For on-premises applications:

- Configure Cloud App Security policies.
- Modify the User consent settings for the enterprise applications.
- Publish the applications by using Azure AD Application Proxy.

For SharePoint Online:

- Configure Cloud App Security policies.
- Modify the User consent settings for the enterprise applications.
- Publish an application by using Azure AD Application Proxy.

NEW QUESTION 4

- (Exam Topic 1)

You need to configure the assignment of Azure AD licenses to the Litware users. The solution must meet the licensing requirements. What should you do? To answer, select the appropriate options in the answer area. NOTE: Each correct selection is worth one point.

Azure AD Connect settings to modify:

- Directory Extensions
- Domain Filtering
- Optional Features

Assign Azure AD licenses to:

- An Azure Active Directory group that has only nested groups
- An Azure Active Directory group that has the Assigned membership type
- An Azure Active Directory group that has the Dynamic User membership type

- A. Mastered
- B. Not Mastered

Answer: A

Explanation:

Litware recently added a custom user attribute named LWWLicenses to the litware.com Active Directory forest. Litware wants to manage the assignment of Azure AD licenses by modifying the value of the LWWLicenses attribute. Users who have the appropriate value for LWWLicenses must be added automatically to a Microsoft 365 group that has the appropriate licenses assigned.

NEW QUESTION 5

- (Exam Topic 2)

You need to meet the technical requirements for the probability that user identifies were compromised. What should the users do first, and what should you configure? To answer, select the appropriate options in the answer area.

NOTE: Each correct selection is worth one point.

Answer Area

The users must first:	<ul style="list-style-type: none"> Provide consent for any app to access the data of Contoso. Register for multi-factor authentication (MFA). Register for self-service password reset (SSPR).
You must configure:	<ul style="list-style-type: none"> A sign-in risk policy A user risk policy An Azure AD Password Protection policy

- A. Mastered
- B. Not Mastered

Answer: A

Explanation:

Answer Area

The users must first:	<ul style="list-style-type: none"> Provide consent for any app to access the data of Contoso. Register for multi-factor authentication (MFA). Register for self-service password reset (SSPR).
You must configure:	<ul style="list-style-type: none"> A sign-in risk policy A user risk policy An Azure AD Password Protection policy

NEW QUESTION 6

- (Exam Topic 2)

You need to locate licenses to the A. Datum users. The solution must need the technical requirements. Which type of object should you create?

- A. A Dynamo User security group
- B. An OU
- C. A distribution group
- D. An administrative unit

Answer: A

NEW QUESTION 7

- (Exam Topic 2)

You need to implement the planned changes and technical requirements for the marketing department. What should you do? To answer, select the appropriate options in the answer area.

NOTE: Each correct selection is worth one point.

To configure user access:

<input type="checkbox"/>	An access package
<input type="checkbox"/>	An access review
<input type="checkbox"/>	A conditional access policy

To enable collaboration with fabrikam.com:

<input type="checkbox"/>	An accepted domain
<input type="checkbox"/>	A connected organization
<input type="checkbox"/>	A custom domain name

- A. Mastered
- B. Not Mastered

Answer: A

Explanation:

Reference:

<https://docs.microsoft.com/en-us/azure/active-directory/governance/entitlement-management-organization>

NEW QUESTION 8

- (Exam Topic 3)

You need implement the planned changes for application access to organizational data. What should you configure?

- A. authentication methods
- B. the User consent settings
- C. access packages
- D. an application proxy

Answer: D

NEW QUESTION 9

- (Exam Topic 3)

You need to resolve the issue of the sales department users. What should you configure for the Azure AD tenant?

- A. the User settings
- B. the Device settings
- C. the Access reviews settings
- D. Security defaults

Answer: A

NEW QUESTION 10

- (Exam Topic 4)

You have a Microsoft 365 E5 tenant. You purchase a cloud app named App1.

You need to enable real-time session-level monitoring of App1 by using Microsoft Cloud app Security.

Which four actions should you perform in sequence? To answer, move the appropriate actions from the list of actions to the answer area and arrange them in the correct order.

Actions

Answer Area

From Microsoft Cloud App Security, create a session policy.

Publish App1 in Azure Active Directory (Azure AD).

Create a conditional access policy that has session controls configured.

From Microsoft Cloud App Security, modify the Connected apps settings for App1.



- A. Mastered
- B. Not Mastered

Answer: A

Explanation:

A picture containing application Description automatically generated

Reference:

<https://docs.microsoft.com/en-us/cloud-app-security/proxy-deployment-any-app> <https://docs.microsoft.com/en-us/cloud-app-security/session-policy-aad>

NEW QUESTION 10

- (Exam Topic 4)

You have a Microsoft 365 tenant and an Active Directory domain named adatum.com. You deploy Azure AD Connect by using the Express Settings. You need to configure self-service password reset (SSPR) to meet the following requirements:

- > When users reset their password, they must be prompted to respond to a mobile app notification or answer three predefined security questions.
- > Passwords must be synced between the tenant and the domain regardless of where the password was reset.

What should you do? To answer, select the appropriate options in the answer area.

NOTE: Each correct selection is worth one point.

From the Password reset blade in the Azure Active Directory admin center, configure:

	▼
Authentication methods	
Notifications	
Properties	
Registration	

From Azure AD Connect, enable:

	▼
Federation with Active Directory Federation Services (AD FS)	
Pass-through authentication	
Password hash synchronization	
Password writeback	

- A. Mastered
- B. Not Mastered

Answer: A

Explanation:

Graphical user interface, text, application Description automatically generated

Reference:

<https://docs.microsoft.com/en-us/azure/active-directory/authentication/howto-sspr-deployment> <https://docs.microsoft.com/en-us/azure/active-directory/authentication/concept-authentication-security-questions>

NEW QUESTION 11

- (Exam Topic 4)

You have a Microsoft 365 tenant.

Sometimes, users use external, third-party applications that require limited access to the Microsoft 365 data of the respective user. The users register the applications in Azure Active Directory (Azure AD).

You need to receive an alert if a registered application gains read and write access to the users' email. What should you do? To answer, select the appropriate options in the answer area.

NOTE: Each correct selection is worth one point.

Tool to use:

Azure AD Identity Protection
Identity Governance
Microsoft Cloud App Security
Microsoft Endpoint Manager

Policy type to create:

App discovery
App protection
Conditional access
OAuth app
Sign-in risk
User risk

- A. Mastered
- B. Not Mastered

Answer: A

Explanation:

Reference:

<https://docs.microsoft.com/en-us/cloud-app-security/app-permission-policy>

NEW QUESTION 13

- (Exam Topic 4)

You have 2,500 users who are assigned Microsoft Office 365 Enterprise E3 licenses. The licenses are assigned to individual users. From the Groups blade in the Azure Active Directory admin center, you assign Microsoft 365 Enterprise E5 licenses to the users.

You need to remove the Office 365 Enterprise E3 licenses from the users by using the least amount of administrative effort.

What should you use?

- A. the Identity Governance blade in the Azure Active Directory admin center
- B. the Set-AzureAdUser cmdlet
- C. the Licenses blade in the Azure Active Directory admin center
- D. the Set-WindowsProductKey cmdlet

Answer: C

NEW QUESTION 17

- (Exam Topic 4)

Your company has a Microsoft 365 tenant.

The company has a call center that contains 300 users. In the call center, the users share desktop computers and might use a different computer every day. The call center computers are NOT configured for biometric identification.

The users are prohibited from having a mobile phone in the call center.

You need to require multi-factor authentication (MFA) for the call center users when they access Microsoft 365 services.

What should you include in the solution?

- A. a named network location
- B. the Microsoft Authenticator app
- C. Windows Hello for Business authentication
- D. FIDO2 tokens

Answer: D

Explanation:

<https://docs.microsoft.com/en-us/azure/active-directory/authentication/concept-authentication-passwordless>

NEW QUESTION 20

- (Exam Topic 4)

You have an Azure Active Directory (Azure AD) tenant that contains the following group:

- > Name: Group1
- > Members: User1, User2
- > Owner: User3

On January 15, 2021, you create an access review as shown in the exhibit. (Click the Exhibit tab.)

Create an access review

Review name *

Description ⓘ

Start date *

Frequency

Duration (in days) ⓘ

End ⓘ ☐ Never ☒ End by ☐ Occurrences

Number of times

End date *

Users

Users to review

Scope ☐ Guest users only ☒ Everyone

Group *

Reviewers

Reviewers

Programs

Link to program

Upon completion settings

Advanced settings

Start

Users answer the Review1 question as shown in the following table.

User	Date	Do you still need access to Group1?
User1	January 17, 2021	Yes
User2	January 20, 2021	No

For each of the following statements, select Yes if the statement is true. Otherwise, select No.
 NOTE: Each correct selection is worth one point.

Statements	Yes	No
On February 5, 2021, User1 can answer the Review1 question again.	<input type="radio"/>	<input type="radio"/>
On January 25, 2021, User2 can answer the Review1 question again.	<input type="radio"/>	<input type="radio"/>
On January 22, 2021, User3 can answer the Review1 question.	<input type="radio"/>	<input type="radio"/>

- A. Mastered
- B. Not Mastered

Answer: A

Explanation:

A screenshot of a computer Description automatically generated with low confidence

Reference:

<https://docs.microsoft.com/en-us/azure/active-directory/governance/review-your-access>

NEW QUESTION 25

- (Exam Topic 4)

You have an Azure Active Directory (Azure AD) tenant named contoso.com.

All users who run applications registered in Azure AD are subject to conditional access policies. You need to prevent the users from using legacy authentication.

What should you include in the conditional access policies to filter out legacy authentication attempts?

- A. a cloud apps or actions condition
- B. a user risk condition
- C. a client apps condition
- D. a sign-in risk condition

Answer: C

Explanation:

Reference:

<https://docs.microsoft.com/en-us/azure/active-directory/conditional-access/block-legacy-authentication>

NEW QUESTION 28

- (Exam Topic 4)

You have a Microsoft 365 tenant.

You have an Active Directory domain that syncs to the Azure Active Directory (Azure AD) tenant. Users connect to the internet by using a hardware firewall at your company. The users authenticate to the firewall by using their Active Directory credentials.

You plan to manage access to external applications by using Azure AD.

You need to use the firewall logs to create a list of unmanaged external applications and the users who access them.

What should you use to gather the information?

- A. Cloud App Discovery in Microsoft Defender for Cloud Apps
- B. enterprise applications in Azure AD
- C. access reviews in Azure AD
- D. Application Insights in Azure Monitor

Answer: A

NEW QUESTION 30

- (Exam Topic 4)

Your network contains an on-premises Active Directory domain that syncs to an Azure Active Directory (Azure AD) tenant

Users sign in to computers that run Windows 10 and are joined to the domain.

You plan to implement Azure AD Seamless Single Sign-On (Azure AD Seamless SSO). You need to configure the computers for Azure AD Seamless SSO.

What should you do?

- A. Enable Enterprise State Roaming.
- B. Configure Sign-in options.
- C. Install the Azure AD Connect Authentication Agent.
- D. Modify the Intranet Zone settings.

Answer: D

Explanation:

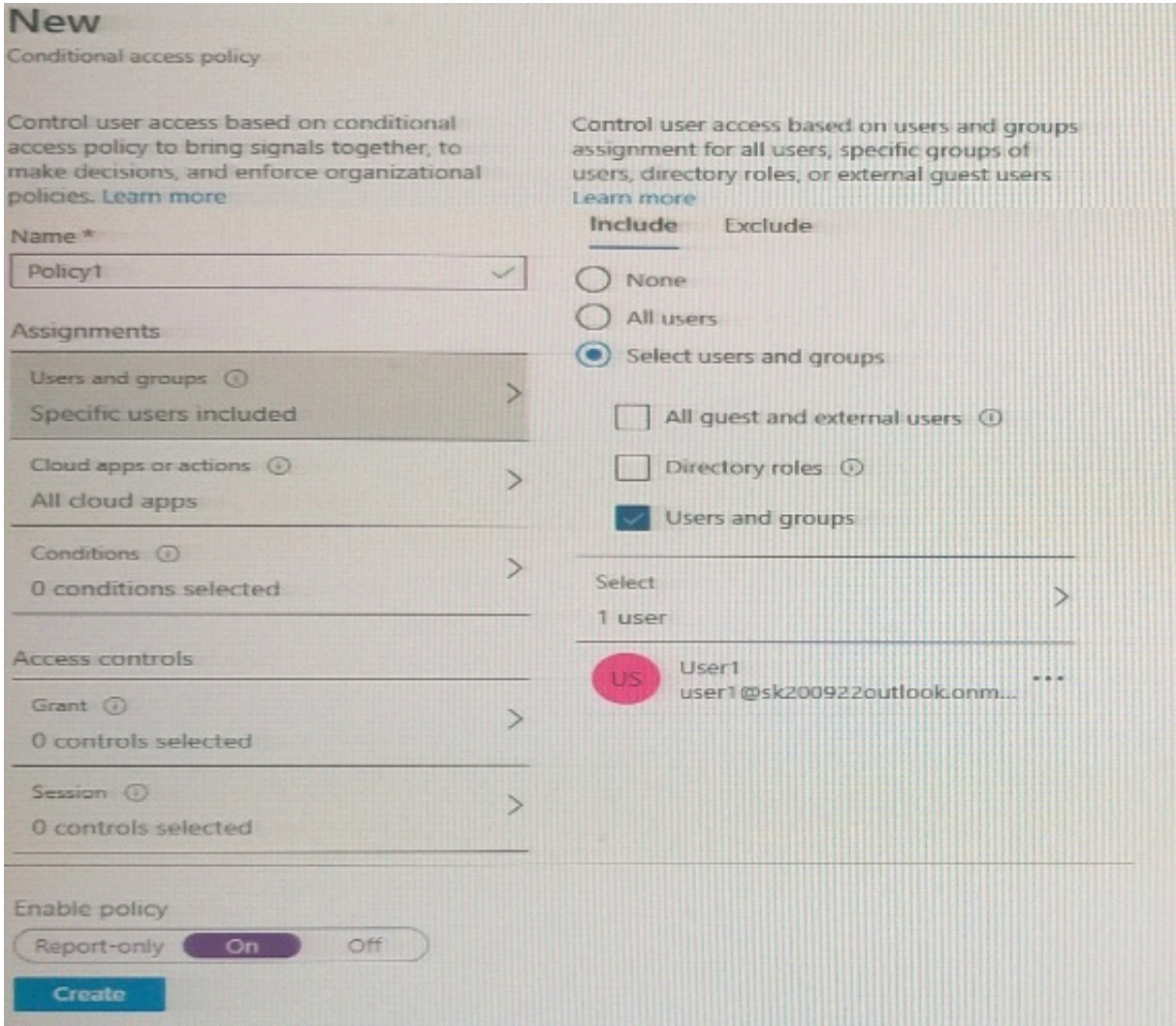
Reference:

<https://docs.microsoft.com/en-us/azure/active-directory/hybrid/how-to-connect-sso-quick-start>

NEW QUESTION 35

- (Exam Topic 4)

You have an Azure Active Directory (Azure AD) tenant that has Security defaults disabled. You are creating a conditional access policy as shown in the following exhibit.



Use the drop-down menus to select the answer choice that completes each statement based on the information presented in the graphic.
NOTE: Each correct selection is worth one point.

To ensure that User1 is prompted for multi-factor authentication (MFA) when accessing Cloud apps, you must configure the [answer choice].

Conditions settings

Enable policy setting

Grant settings

Sessions settings

Users and groups setting

To ensure that User1 is prompted for authentication every eight hours, you must configure the [answer choice].

Conditions settings

Enable policy setting

Grant settings

Sessions settings

Users and groups setting

- A. Mastered
- B. Not Mastered

Answer: A

Explanation:

Reference:
<https://docs.microsoft.com/en-us/azure/active-directory/conditional-access/howto-conditional-access-policy-all>

NEW QUESTION 39

- (Exam Topic 4)
A user named User1 attempts to sign in to the tenant by entering the following incorrect passwords:

- Pa55w0rd12
- Pa55w0rd12
- Pa55w0rd12
- Pa55w.rd12
- Pa55w.rd123
- Pa55w.rd123
- Pa55w.rd123
- Pa55word12
- Pa55word12
- Pa55word12
- Pa55w.rd12

You need to identify how many sign-in attempts were tracked for User1, and how User1 can unlock her account before the 300-second lockout duration expires.
What should identify? To answer, select the appropriate
NOTE: Each correct selection is worth one point.

Tracked sign-in attempts:

	▼
4	
5	
10	
11	

Unlock by:

	▼
Clearing the browser cache	
Signing in by using inPrivate browsing mode	
Performing a self-service password reset (SSPR)	

- A. Mastered
- B. Not Mastered

Answer: A

Explanation:
Graphical user interface, text, table Description automatically generated
Reference:
<https://docs.microsoft.com/en-us/azure/active-directory/authentication/howto-sspr-deployment>

NEW QUESTION 43

- (Exam Topic 4)
You have an Azure Active Directory (Azure AD) tenant that has multi-factor authentication (MFA) enabled. The account lockout settings are configured as shown in the following exhibit.

Account lockout

Temporarily lock accounts in the multi-factor authentication service if there are too many denied authentication attempts in a row. This feature only applies to users who enter a PIN to authenticate.

Number of MFA denials to trigger account lockout *

3	✓
---	---

Minutes until account lockout counter is reset *

60	✓
----	---

Minutes until account is automatically unblocked *

30	✓
----	---

Use the drop-down menus to select the answer choice that completes each statement based on the information presented in the graphic.
NOTE: Each correct selection is worth one point.

Answer Area

A user account will be locked out if the user enters the wrong [answer choice] three times.

email address
Microsoft Authenticator app code
password

If a user account is locked, the user can sign in again successfully after [answer choice] minutes.

30
60
90

- A. Mastered
- B. Not Mastered

Answer: A

Explanation:
App code 60
<https://docs.microsoft.com/en-us/azure/active-directory/authentication/howto-mfa-mfasettings#account-lockout>

NEW QUESTION 46

- (Exam Topic 4)
You use Azure Monitor to analyze Azure Active Directory (Azure AD) activity logs. You receive more than 100 email alerts each day for tailed Azure AI) user sign-in attempts. You need to ensure that a new security administrator receives the alerts instead of you. Solution: From Azure AD, you create an assignment for the Insights at administrator role. Does this meet the goal?

- A. Yes
- B. No

Answer: B

NEW QUESTION 50

- (Exam Topic 4)

You have a Microsoft 365 tenant.

The Azure Active Directory (Azure AD) tenant contains the groups shown in the following table.

Name	Type
Group1	Security
Group2	Distribution
Group3	Microsoft 365
Group4	Mail-enabled security

In Azure AD, you add a new enterprise application named Appl. Which groups can you assign to App1?

- A. Group1 and Group2 only
- B. Group2 only
- C. Group3 only
- D. Group1 only
- E. Group1 and Group4

Answer: C

NEW QUESTION 52

- (Exam Topic 4)

Your company has a Microsoft 365 tenant.

All users have computers that run Windows 10 and are joined to the Azure Active Directory (Azure AD) tenant.

The company subscribes to a third-party cloud service named Service1. Service1 supports Azure AD authentication and authorization based on OAuth. Service1 is published to the Azure AD gallery.

You need to recommend a solution to ensure that the users can connect to Service1 without being prompted for authentication. The solution must ensure that the users can access Service1 only from Azure AD-joined computers. The solution must minimize administrative effort.

What should you recommend for each requirement? To answer, select the appropriate options in the answer area.

NOTE: Each correct selection is worth one point.

Ensure that the users can connect to Service1 without being prompted for authentication:

An app registration in Azure AD
Azure AD Application Proxy
An enterprise application in Azure AD
A managed identity in Azure AD

Ensure that the users can access Service1 only from the Azure AD-joined computers:

Azure AD Application Proxy
A compliance policy
A conditional access policy
An OAuth policy

- A. Mastered
- B. Not Mastered

Answer: A

Explanation:

Graphical user interface, text, application Description automatically generated

Reference:

<https://docs.microsoft.com/en-us/azure/active-directory/develop/active-directory-how-applications-are-added> <https://docs.microsoft.com/en-us/azure/active-directory/conditional-access/require-managed-devices>

NEW QUESTION 53

- (Exam Topic 4)

You use Azure Monitor to analyze Azure Active Directory (Azure AD) activity logs.

You receive more than 100 email alerts each day for failed Azure AD user sign-in attempts. You need to ensure that a new security administrator receives the alerts instead of you.

Solution: From Azure monitor, you create a data collection rule. Does this meet the goal?

- A. Yes
- B. No

Answer: B

NEW QUESTION 55

- (Exam Topic 4)

You have an Azure Active Directory (Azure AD) tenant that syncs to an Active Directory forest. The tenant-uses through authentication.

A corporate security policy states the following:

- > Domain controllers must never communicate directly to the internet.
- > Only required software must be- installed on servers.

The Active Directory domain contains the on-premises servers shown in the following table.

Name	Description
Server1	Domain controller (PDC emulator)
Server2	Domain controller (infrastructure master)
Server3	Azure AD Connect server
Server4	Unassigned member server

You need to ensure that users can authenticate to Azure AD if a server fails.

On which server should you install an additional pass-through authentication agent?

- A. Server2
- B. Server4
- C. Server1
- D. Server3

Answer: B

Explanation:

Reference:

<https://docs.microsoft.com/en-us/azure/active-directory/hybrid/how-to-connect-pta-quick-start>

NEW QUESTION 56

- (Exam Topic 4)

You have a Microsoft 365 tenant.

All users have mobile phones and laptops.

The users frequently work from remote locations that do not have Wi-Fi access or mobile phone connectivity. While working from the remote locations, the users connect their laptop to a wired network that has internet access.

You plan to implement multi-factor authentication (MFA).

Which MFA authentication method can the users use from the remote location?

- A. a notification through the Microsoft Authenticator app
- B. an app password
- C. Windows Hello for Business
- D. SMS

Answer: C

Explanation:

In Windows 10, Windows Hello for Business replaces passwords with strong two-factor authentication on PCs and mobile devices. This authentication consists of a new type of user credential that is tied to a device and uses a biometric or PIN.

After an initial two-step verification of the user during enrollment, Windows Hello is set up on the user's device and Windows asks the user to set a gesture, which can be a biometric, such as a fingerprint, or a PIN. The user provides the gesture to verify their identity. Windows then uses Windows Hello to authenticate users.

Reference:

<https://docs.microsoft.com/en-us/azure/active-directory/authentication/concept-authentication-methods> <https://docs.microsoft.com/en-us/windows/security/identity-protection/hello-for-business/hello-overview>

NEW QUESTION 59

- (Exam Topic 4)

You have an on-premises datacenter that contains the hosts shown in the following table.

Name	Description
Server1	Domain controller that runs Windows Server 2019
Server2	Server that runs Windows Server 2019 and has Azure AD Connect deployed
Server3	Server that runs Windows Server 2019 and has a Microsoft ASP.NET application named App1 installed
Server4	Unassigned server that runs Windows Server 2019
Firewall1	Hardware firewall connected to the internet that blocks all traffic unless explicitly allowed

You have an Azure Active Directory (Azure AD) tenant that syncs to the Active Directory forest. Multi-factor authentication (MFA) is enforced for Azure AD.

You need to ensure that you can publish App1 to Azure AD users.

What should you configure on Server and Firewall1? To answer, select the appropriate options in the answer area.

NOTE: Each correct selection is worth one point.

Service to install on Server4:

Azure AD Application Proxy
The Azure AD Password Protection DC agent
The Azure AD Password Protection proxy service
Web Application Proxy in Windows Server

Rule to configure on Firewall1:

Allow incoming HTTPS connections from Azure AD to Server4.
Allow incoming IPsec connections from Azure AD to Server4.
Allow outbound HTTPS connections from Server4 to Azure AD.
Allow outbound IPsec connections from Server4 to Azure AD.

- A. Mastered
- B. Not Mastered

Answer: A

Explanation:

Reference:

<https://docs.microsoft.com/en-us/azure/active-directory/manage-apps/application-proxy>

NEW QUESTION 61

- (Exam Topic 4)

You have a Microsoft 365 tenant.

All users have computers that run Windows 10. Most computers are company-owned and joined to Azure Active Directory (Azure AD). Some computers are user-owned and are only registered in Azure AD.

You need to prevent users who connect to Microsoft SharePoint Online on their user-owned computer from downloading or syncing files. Other users must NOT be restricted.

Which policy type should you create?

- A. a Microsoft Cloud App Security activity policy that has Microsoft Office 365 governance actions configured
- B. an Azure AD conditional access policy that has session controls configured
- C. an Azure AD conditional access policy that has client apps conditions configured
- D. a Microsoft Cloud App Security app discovery policy that has governance actions configured

Answer: B

Explanation:

Reference:

<https://docs.microsoft.com/en-us/cloud-app-security/proxy-intro-aad>

NEW QUESTION 64

- (Exam Topic 4)

You have a Microsoft 365 subscription that contains the following:

- An Azure Active Directory (Azure AD) tenant that has an Azure Active Directory Premium P2 license
- A Microsoft SharePoint Online site named Site1
- A Microsoft Teams team named Team1

You need to create an entitlement management workflow to manage Site1 and Team1. What should you do first?

- A. Create an access package.
- B. Create a catalog.
- C. Create an administrative unit.
- D. Configure an app registration.

Answer: A

NEW QUESTION 67

- (Exam Topic 4)

You have a Microsoft Exchange organization that uses an SMTP address space of contoso.com.

Several users use their contoso.com email address for self-service sign up to Azure Active Directory (Azure AD).

You gain global administrator privileges to the Azure AD tenant that contains the self-signed users.

You need to prevent the users from creating user accounts in the contoso.com Azure AD tenant for self-service sign-up to Microsoft 365 services.

Which PowerShell cmdlet should you run?

- A. Set-MsolCompanySettings
- B. Set-MsolDomainFederationSettings
- C. Update-MsolFederatedDomain
- D. Set-MsolDomain

Answer: A

Explanation:

<https://docs.microsoft.com/en-us/azure/active-directory/enterprise-users/directory-self-service-signup>

NEW QUESTION 72

- (Exam Topic 4)

You have an Azure Active Directory (Azure AD) tenant that has the default App registrations settings. The tenant contains the users shown in the following table.

Name	Role
Admin1	Application administrator
Admin2	Application developer
Admin3	Cloud application administrator
User1	User

You purchase two cloud apps named App1 and App2. The global administrator registers App1 in Azure AD. You need to identify who can assign users to App1, and who can register App2 in Azure AD.

What should you identify? To answer, select the appropriate options in the answer area. NOTE: Each correct selection is worth one point.

Can assign users to App1:

Admin1 only
Admin3 only
Admin1 and Admin3 only
Admin1, Admin2, and Admin3 only
Admin1, Admin2, Admin3, and User1

Can register App2 in Azure AD:

Admin1 only
Admin3 only
Admin1 and Admin3 only
Admin1, Admin2, and Admin3 only
Admin1, Admin2, Admin3, and User1

- A. Mastered
- B. Not Mastered

Answer: A

Explanation:

Reference:

<https://docs.microsoft.com/en-us/azure/active-directory/manage-apps/add-application-portal-assign-users> <https://docs.microsoft.com/en-us/azure/active-directory/develop/active-directory-how-applications-are-added>

NEW QUESTION 75

- (Exam Topic 4)

You have an Azure Active Directory (Azure AD) tenant named contoso.com.

You plan to bulk invite Azure AD business-to-business (B2B) collaboration users.

Which two parameters must you include when you create the bulk invite? Each correct answer presents part of the solution

NOTE: Each correct selection is worth one point.

- A. email address
- B. redirection URL
- C. username
- D. shared key
- E. password

Answer: AB

Explanation:

Reference:

<https://docs.microsoft.com/en-us/azure/active-directory/external-identities/tutorial-bulk-invite>

NEW QUESTION 77

- (Exam Topic 4)

Your company recently implemented Azure Active Directory (Azure AD) Privileged Identity Management (PIM).

While you review the roles in PIM, you discover that all 15 users in the IT department at the company have permanent security administrator rights.

You need to ensure that the IT department users only have access to the Security administrator role when required.

What should you configure for the Security administrator role assignment?

- A. Expire eligible assignments after from the Role settings details
- B. Expire active assignments after from the Role settings details
- C. Assignment type to Active
- D. Assignment type to Eligible

Answer: D

Explanation:

Reference:

<https://docs.microsoft.com/en-us/azure/active-directory/privileged-identity-management/pim-configure>

NEW QUESTION 82

- (Exam Topic 4)

You have an Azure Active Directory (Azure AD) tenant that contains the users shown in the following table.

Name	Role
User1	Conditional Access administrator
User2	Authentication administrator
User3	Security administrator
User4	Security operator

You plan to implement Azure AD Identity Protection.

Which users can configure the user risk policy, and which users can view the risky users report? To answer, select the appropriate options in the answer area.

NOTE: Each correct selection is worth one point.

Configure the user risk policy:

User3 only
 User3 and User4 only
 User1, User2, and User3 only
 User1, User3, and User4 only
 User1, User2, User3, and User4

View the risky users report:

User3 only
 User3 and User4 only
 User1, User2, and User3 only
 User1, User3, and User4 only
 User1, User2, User3, and User4

- A. Mastered
 B. Not Mastered

Answer: A

Explanation:

Graphical user interface, text Description automatically generated

Reference:

<https://docs.microsoft.com/en-us/azure/active-directory/identity-protection/overview-identity-protection>

NEW QUESTION 86

- (Exam Topic 4)

You have an Azure subscription.

You need to create two custom roles named Role1 and Role2. The solution must meet the following requirements:

- Users that are assigned Role1 can create or delete instances of Azure Container Apps.
- Users that are assigned Role2 can enforce adaptive network hardening rules.

Which resource provider permissions are required for each role? To answer, select the appropriate options in the answer area.

NOTE: Each correct selection is worth one point.

Answer Area

Role1:

Microsoft.App
 Microsoft.Compute
 Microsoft.Management
 Microsoft.Security

Role2:

Microsoft.App
 Microsoft.Compute
 Microsoft.Network
 Microsoft.Security

- A. Mastered
 B. Not Mastered

Answer: A

Explanation:

Answer Area

Role1:

Role2:

NEW QUESTION 87

- (Exam Topic 4)

You have a Microsoft 365 tenant.

You create a named location named HighRiskCountries that contains a list of high-risk countries.

You need to limit the amount of time a user can stay authenticated when connecting from a high-risk country.

What should you configure in a conditional access policy? To answer, select the appropriate options in the answer area.

NOTE: Each correct selection is worth one point.

Answer Area

Configure HighRiskCountries by using:

- ☐ A cloud app or action
- ☐ A condition
- ☐ A grant control
- ☐ A session control

Configure Sign-in frequency by using:

- ☐ A cloud app or action
- ☐ A condition
- ☐ A grant control
- ☐ A session control

- A. Mastered
- B. Not Mastered

Answer: A

Explanation:

Graphical user interface, text, application Description automatically generated

Reference:

<https://docs.microsoft.com/en-us/azure/active-directory/conditional-access/location-condition> <https://docs.microsoft.com/en-us/azure/active-directory/conditional-access/concept-conditional-access-session>

NEW QUESTION 90

- (Exam Topic 4)

You have an Azure Active Directory (Azure AD) tenant.

You need to review the Azure AD sign-ins log to investigate sign ins that occurred in the past. For how long does Azure AD store events in the sign-in log?

- A. 14 days
- B. 30 days
- C. 90 days
- D. 365 days

Answer: B

NEW QUESTION 95

- (Exam Topic 4)

You have an Azure subscription that contains the custom roles shown in the following table.

Name	Type
Role1	Azure Active Directory (Azure AD) role
Role2	Azure subscription role

You need to create a custom Azure subscription role named Role3 by using the Azure portal. Role3 will use the baseline permissions of an existing role. Which roles can you clone to create Role3?

- A. Role2 only
- B. built-in Azure subscription roles only
- C. built-in Azure subscription roles and Role2 only
- D. built-in Azure subscription roles and built-in Azure AD roles only
- E. Role1, Role2 built-in Azure subscription roles, and built-in Azure AD roles

Answer: A

NEW QUESTION 97

- (Exam Topic 4)

You have a Microsoft 365 tenant.

The Azure Active Directory (Azure AD) tenant syncs to an on-premises Active Directory domain. The domain contains the servers shown in the following table.

Name	Operating system	Configuration
Server1	Windows Server 2019	Domain controller
Server2	Windows Server 2019	Domain controller
Server3	Windows Server 2019	Azure AD Connect

The domain controllers are prevented from communicating to the internet. You implement Azure AD Password Protection on Server1 and Server2. You deploy a new server named Server4 that runs Windows Server 2019.

You need to ensure that Azure AD Password Protection will continue to work if a single server fails. What should you implement on Server4?

- A. Azure AD Connect
- B. Azure AD Application Proxy
- C. Password Change Notification Service (PCNS)
- D. the Azure AD Password Protection proxy service

Answer: D

Explanation:

Reference:

<https://docs.microsoft.com/en-us/azure/active-directory/authentication/howto-password-ban-bad-on-premisesdep>

NEW QUESTION 99

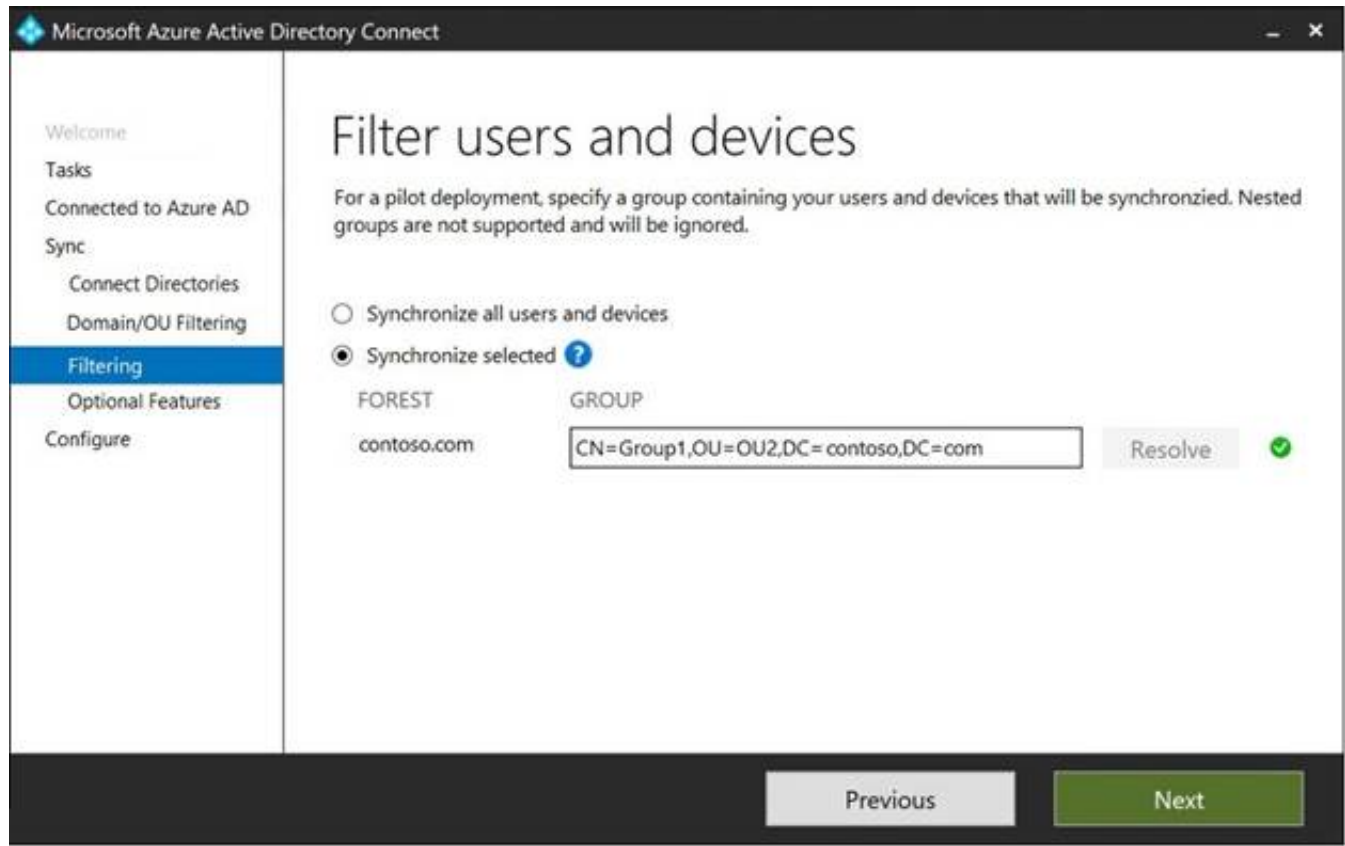
- (Exam Topic 4)

Your network contains an on-premises Active Directory domain named contoso.com. The domain contains the objects shown in the following table.

Name	Type	In organizational unit (OU)	Description
User1	User	OU1	User1 is a member of Group1.
User2	User	OU1	User2 is not a member of any groups.
Group1	Security group	OU2	User1 and Group2 are members of Group1.
Group2	Security group	OU1	Group2 is a member of Group1.

You install Azure AD Connect. You configure the Domain and OU filtering settings as shown in the Domain and OU Filtering exhibit. (Click the Domain and OU Filtering tab.)

You configure the Filter users and devices settings as shown in the Filter Users and Devices exhibit. (Click the Filter Users and Devices tab.)



For each of the following statements, select Yes if the statement is true. Otherwise, select No.

Statements	Yes	No
User1 syncs to Azure AD.	<input type="radio"/>	<input type="radio"/>
User2 syncs to Azure AD.	<input type="radio"/>	<input type="radio"/>
Group2 syncs to Azure AD.	<input type="radio"/>	<input type="radio"/>

- A. Mastered
- B. Not Mastered

Answer: A

Explanation:

Graphical user interface, application Description automatically generated
Only direct members of Group1 are synced. Group2 will sync as it is a direct member of Group1 but the members of Group2 will not sync.
Reference:
<https://docs.microsoft.com/en-us/azure/active-directory/hybrid/how-to-connect-install-custom>

NEW QUESTION 103

- (Exam Topic 4)

Note: This question is part of a series of questions that present the same scenario. Each question in the series contains a unique solution that might meet the stated goals. Some question sets might have more than one correct solution, while others might not have a correct solution.

After you answer a question in this section, you will NOT be able to return to it. As a result, these questions will not appear in the review screen.

You have a Microsoft 365 tenant.

You have 100 IT administrators who are organized into 10 departments. You create the access review shown in the exhibit. (Click the Exhibit tab.)

Create an access review

Access reviews allow reviewers to attest to whether users still need to be in a role.

Review name *

Description

Start date *

Frequency

Duration (in days)

End ☐ Never ☐ End by ☐ Occurrences

Number of times

End date

Users

Scope ☒ Everyone

Review role membership (permanent and eligible) *

[Application Administrator and 72 others](#)

Reviewers

Reviewers

(Preview) Fallback reviewers

✓ Upon completion settings

Start

You discover that all access review requests are received by Megan Bowen.

You need to ensure that the manager of each department receives the access reviews of their respective department.

Solution: You modify the properties of the IT administrator user accounts. Does this meet the goal?

- A. Yes
- B. No

Answer: A

Explanation:

Reference:

D18912E1457D5D1DDCBD40AB3BF70D5D

<https://docs.microsoft.com/en-us/azure/active-directory/governance/create-access-review>

NEW QUESTION 108

- (Exam Topic 4)

Your company has an Azure Active Directory (Azure AD) tenant named contosri.com. The company has the business partners shown in the following table.

Name	Description
Fabrikam, Inc.	An Azure AD tenant that has two verified domains named fabrikam.com and adatum.com
Litware, Inc.	A third-party identity provider that uses the domain names of litwareinc.com and contoso.com

users can request access by using package 1.

Users at Fabrikam and Litware use all then respective domain names for email addresses.

You plan to create an access package named package1 that will be accessible only to the Fabrikam and Litware users.

You need to configure connected organizations for Fabrikam and litware so that any of their users can request access by using package1.

What is the minimum of connected organization that you should create.

- A. 1
- B. 2
- C. 3
- D. 4

Answer: C

NEW QUESTION 111

- (Exam Topic 4)

You have a Microsoft 365 tenant.

You need to Identity users who have leaked credentials. The solution must meet the following requirements:

- Identity sign-ins by users who are suspected of having leaked credentials.
- Flag the sign-ins as a high-risk event.
- Immediately enforce a control to mitigate the risk, while still allowing the user to access applications. What should you use? To answer, select the appropriate options in the answer area.

To classify leaked credentials as high-risk, use:

Azure Active Directory (Azure AD) Identity Protection
Azure Active Directory (Azure AD) Privileged Identity Management (PIM)
Identity Governance
Self-service password reset (SSPR)

To trigger remediation, use:

Client apps not using Modern authentication
Device state
Sign-in risk
User location
User risk

To mitigate the risk, select:

Apply app enforced restrictions
Block access
Grant access but require app protection policy
Grant access but require password change

- A. Mastered
 B. Not Mastered

Answer: A

Explanation:

To classify leaked credentials as high-risk, use:

Azure Active Directory (Azure AD) Identity Protection
Azure Active Directory (Azure AD) Privileged Identity Management (PIM)
Identity Governance
Self-service password reset (SSPR)

To trigger remediation, use:

Client apps not using Modern authentication
Device state
Sign-in risk
User location
User risk

To mitigate the risk, select:

Apply app enforced restrictions
Block access
Grant access but require app protection policy
Grant access but require password change

NEW QUESTION 115

- (Exam Topic 4)

You have an Azure Active Directory (Azure AD) tenant.

You create an enterprise application collection named HR Apps that has the following settings:

- Applications: Appl. App?, App3
- Owners: Admin 1
- Users and groups: HRUsers

After three apps have the following Properties settings:

- Enabled for users to sign in: Yes
- User assignment required: Yes
- Visible to users: Yes

Users report that when they go to the My Apps portal, they only see App1 and App2-You need to ensure that the users can also see App3. What should you do from App3?

What should you do from App3?

- A. From Users and groups, add HRUsers.
 B. From Properties, change User assignment required to No.
 C. From Permissions, review the User consent permissions.
 D. From Single sign on, configure a sign-on method.

Answer: A

Explanation:

Reference:

<https://docs.microsoft.com/en-us/azure/active-directory/manage-apps/assign-user-or-group-access-portal> <https://docs.microsoft.com/en-us/azure/active-directory/user-help/my-applications-portal-workspaces>

NEW QUESTION 116

- (Exam Topic 4)

You have an Azure Active Directory (Azure AD) tenant that contains the groups shown in the following table.

Name	Type	Membership type
Group1	Security	Assigned
Group2	Security	Dynamic User
Group3	Security	Dynamic Device
Group4	Microsoft 365	Assigned
Group5	Microsoft 365	Dynamic User

For which groups can you create an access review?

- A. Group1 only
- B. Group1 and Group4 only
- C. Group1 and Group2 only
- D. Group1, Group2, Group4, and Group5 only
- E. Group1, Group2, Group3, Group4 and Group5

Answer: D

Explanation:

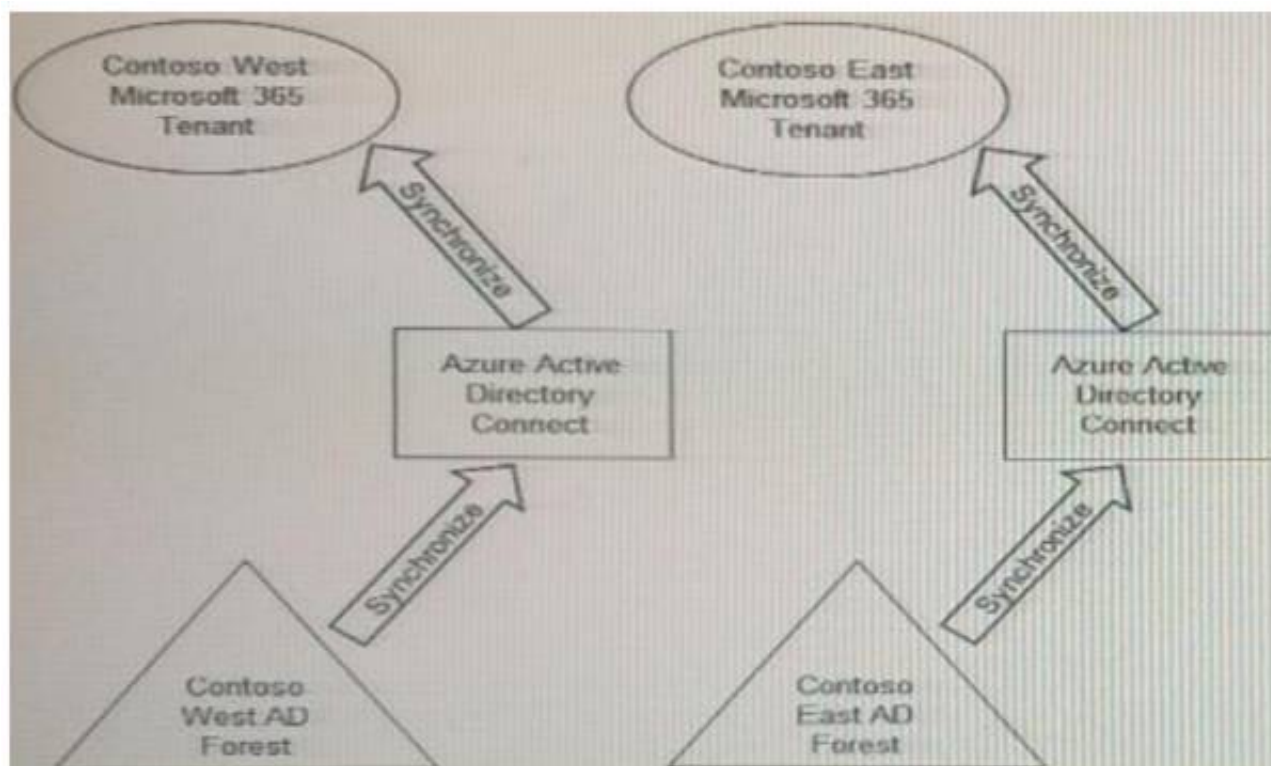
You cannot create access reviews for device groups. Reference:

<https://docs.microsoft.com/en-us/azure/active-directory/governance/create-access-review>

NEW QUESTION 121

- (Exam Topic 4)

Your company has two divisions named Contoso East and Contoso West. The Microsoft 365 identity architecture for both divisions is shown in the following exhibit.



You need to assign users from the Contoso East division access to Microsoft SharePoint Online sites in the Contoso West tenant. The solution must not require additional Microsoft 365 licenses.

What should you do?

- A. Configure The exiting Azure AD Connect server in Contoso East to sync the Contoso East ActiveDirectory forest to the Contoso West tenant.
- B. Configure Azure AD Application Proxy in the Contoso West tenant.
- C. Deploy a second Azure AD Connect server to Contoso East and configure the server to sync the Contoso East Active Directory forest to the Contoso West tenant.
- D. Create guest accounts for all the Contoso East users in the West tenant.

Answer: D

NEW QUESTION 126

- (Exam Topic 4)

Note: This question is part of a series of questions that present the same scenario. Each question in the series contains a unique solution that might meet the stated goals. Some question sets might have more than one correct solution, while others might not have a correct solution.

After you answer a question in this section, you will NOT be able to return to it. As a result, these questions will not appear in the review screen.

You use Azure Monitor to analyze Azure Active Directory (Azure AD) activity logs.

You receive more than 100 email alerts each day for failed Azure AD user sign-in attempts. You need to ensure that a new security administrator receives the alerts instead of you. Solution: From Azure AD, you modify the Diagnostics settings.

Does this meet the goal?

- A. Yes
- B. No

Answer: A

NEW QUESTION 127

- (Exam Topic 4)

You have a Microsoft 365 tenant.

You need to identify users who have leaked credentials. The solution must meet the following requirements.

- Identify sign-ins by users who are suspected of having leaked credentials.
- Tag the sign-ins as a high risk event.
- Immediately enforce a control to mitigate the risk, while still allowing the user to access applications. What should you use? To answer, select the appropriate options in the answer area.

NOTE: Each correct selection is worth one point.

To classify leaked credentials as high-risk, use:

Azure Active Directory (Azure AD) Identity Protection
Azure Active Directory (Azure AD) Privileged Identity Management (PIM)
Identity Governance
Self-service password reset (SSPR)

To trigger remediation, use:

Client apps not using Modern authentication
Device state
Sign-in risk
User location
User risk

To mitigate the risk, select:

Apply app enforced restrictions
Block access
Grant access but require app protection policy
Grant access but require password change

A. Mastered

B. Not Mastered

Answer: A

Explanation:

Graphical user interface, text, application, email Description automatically generated

Reference:

<https://docs.microsoft.com/en-us/azure/active-directory/identity-protection/concept-identity-protection-risks>

NEW QUESTION 131

- (Exam Topic 4)

You have a custom cloud app named App1 that is registered in Azure Active Directory (Azure AD). App1 is configured as shown in the following exhibit.

Save Discard Delete Got feedback?

Enabled for users to sign-in? ☒ Yes ☐ No

Name * App1 ✓

Homepage URL <https://app1.m365x629615.onmicrosoft.com/>

Logo

Select a file

User access URL <https://myapps.microsoft.com/signin/App1/09df58d6-d29d-40de-b0d...>

Application ID 09df58d6-d29d-40de-b0d0-321fdc63c665

Object ID 03709d22-7e61-4007-a2a0-04dbdff269cd

Terms of Service Url Publisher did not provide this information

Privacy Statement Url Publisher did not provide this information

Reply URL <https://contoso.com/App1/login>

User assignment required? ☐ Yes ☒ No

Use the drop-down menus to select the answer choice that completes each statement based on the information presented in the graphic.

NOTE: Each correct selection is worth one point.

[answer choice] can access App1 from the homepage URL.

All users
No one
Only users listed on the Owners blade
Only users listed on the Users and groups blade

App1 will appear in the Microsoft Office 365 app launcher for [answer choice].

all users
no one
only users listed on the Owners blade
only users listed on the Users and groups blade

- A. Mastered
- B. Not Mastered

Answer: A

Explanation:

Reference:

<https://docs.microsoft.com/en-us/azure/active-directory/manage-apps/assign-user-or-group-access-portal>

NEW QUESTION 132

.....

THANKS FOR TRYING THE DEMO OF OUR PRODUCT

Visit Our Site to Purchase the Full Set of Actual SC-300 Exam Questions With Answers.

We Also Provide Practice Exam Software That Simulates Real Exam Environment And Has Many Self-Assessment Features. Order the SC-300 Product From:

<https://www.2passeasy.com/dumps/SC-300/>

Money Back Guarantee

SC-300 Practice Exam Features:

- * SC-300 Questions and Answers Updated Frequently
- * SC-300 Practice Questions Verified by Expert Senior Certified Staff
- * SC-300 Most Realistic Questions that Guarantee you a Pass on Your FirstTry
- * SC-300 Practice Test Questions in Multiple Choice Formats and Updatesfor 1 Year