

# Microsoft

## Exam Questions MD-101

Managing Modern Desktops (beta)



**NEW QUESTION 1**

- (Exam Topic 1)

You need to meet the OOBЕ requirements for Windows AutoPilot.

Which two settings should you configure from the Azure Active Directory blade? To answer, select the appropriate settings in the answer area.

NOTE: Each correct selection is worth one point.

 **Overview**

Getting started

**Manage**

Users
Groups
Organizational relationships
Roles and administrators
Enterprise applications
Devices
App registrations
App registrations (Preview)
Application proxy
Licenses
Azure AD Connect
Custom domain names
Mobility (MDM and MAM)
Password reset
Company branding
User settings
Properties
Notifications settings

- A. Mastered
- B. Not Mastered

**Answer:** A

**Explanation:**

Reference:

<https://blogs.msdn.microsoft.com/sgern/2018/10/11/intune-intune-and-autopilot-part-3-preparing-your-environm>

<https://blogs.msdn.microsoft.com/sgern/2018/11/27/intune-intune-and-autopilot-part-4-enroll-your-first-device/>

**NEW QUESTION 2**

- (Exam Topic 1)

You need to resolve the performance issues in the Los Angeles office.

How should you configure the update settings? To answer, select the appropriate options in the answer area. NOTE: Each correct selection is worth one point.

Change Delivery Optimization download mode to:

Bypass mode

HTTP blended with internet peering

HTTP blended with peering behind same NAT

Simple download mode with no peering

Update Active Hours Start to:

10 AM

11 AM

10 PM

11 PM

Update Active Hours End to:

10 AM

11 AM

10 PM

11 PM

- A. Mastered
- B. Not Mastered

Answer: A

Explanation:

Reference:  
<https://docs.microsoft.com/en-us/windows/deployment/update/waas-delivery-optimization> <https://2pintsoftware.com/delivery-optimization-dl-mode/>

NEW QUESTION 3

- (Exam Topic 1)  
What should you configure to meet the technical requirements for the Azure AD-joined computers?

- A. Windows Hello for Business from the Microsoft Intune blade in the Azure portal.
- B. The Accounts options in an endpoint protection profile.
- C. The Password Policy settings in a Group Policy object (GPO).
- D. A password policy from the Microsoft Office 365 portal.

Answer: A

Explanation:

References:  
<https://docs.microsoft.com/en-us/windows/security/identity-protection/hello-for-business/hello-manage-inorgani>

NEW QUESTION 4

- (Exam Topic 1)  
You need to recommend a solution to meet the device management requirements.  
What should you include in the recommendation? To answer, select the appropriate options in the answer area. NOTE: Each correct selection is worth one point.

For the Research department employees:

An app configuration policy

An app protection policy

Azure information Protection

iOS app provisioning profiles

For the Sales department employees:

An app configuration policy

An app protection policy

Azure information Protection

iOS app provisioning profiles

- A. Mastered
- B. Not Mastered

Answer: A

Explanation:

Reference:  
<https://github.com/MicrosoftDocs/IntuneDocs/blob/master/intune/app-protection-policy.md> <https://docs.microsoft.com/en-us/azure/information-protection/configure-usage-rights#do-not-forward-option-fo>

NEW QUESTION 5

- (Exam Topic 1)

What should you use to meet the technical requirements for Azure DevOps?

- A. An app protection policy
- B. Windows Information Protection (WIP)
- C. Conditional access
- D. A device configuration profile

Answer: C

Explanation:

References:

<https://docs.microsoft.com/en-us/azure/devops/organizations/accounts/manage-conditional-access?view=azure-devops>

NEW QUESTION 6

- (Exam Topic 2)

You need to meet the technical requirements for the IT department. What should you do first?

- A. From the Azure Active Directory blade in the Azure portal, enable Seamless single sign-on.
- B. From the Configuration Manager console, add an Intune subscription.
- C. From the Azure Active Directory blade in the Azure portal, configure the Mobility (MDM and MAM) settings.
- D. From the Microsoft Intune blade in the Azure portal, configure the Windows enrollment settings.

Answer: C

Explanation:

Reference:

<https://docs.microsoft.com/en-us/sccm/comanage/tutorial-co-manage-clients>

NEW QUESTION 7

- (Exam Topic 2)

What is the maximum number of devices that User1 and User2 can enroll in Intune? To answer, select the appropriate options in the answer area.

NOTE: Each correct selection is worth one point.

User1 can enroll a maximum of:

<input type="checkbox"/>	5 devices
<input type="checkbox"/>	10 devices
<input type="checkbox"/>	15 devices
<input type="checkbox"/>	1,000 devices
<input type="checkbox"/>	An unlimited number of devices

User2 can enroll a maximum of:

<input type="checkbox"/>	5 devices
<input type="checkbox"/>	10 devices
<input type="checkbox"/>	15 devices
<input type="checkbox"/>	1,000 devices
<input type="checkbox"/>	An unlimited number of devices

- A. Mastered
- B. Not Mastered

Answer: A

Explanation:

User1 can enroll a maximum of:

<input checked="" type="checkbox"/>	5 devices
<input checked="" type="checkbox"/>	10 devices
<input checked="" type="checkbox"/>	15 devices
<input type="checkbox"/>	1,000 devices
<input type="checkbox"/>	An unlimited number of devices

User2 can enroll a maximum of:

<input type="checkbox"/>	5 devices
<input type="checkbox"/>	10 devices
<input checked="" type="checkbox"/>	15 devices
<input checked="" type="checkbox"/>	1,000 devices
<input type="checkbox"/>	An unlimited number of devices

NEW QUESTION 8

- (Exam Topic 2)

To which devices do Policy1 and Policy2 apply? To answer, select the appropriate options in the answer area. NOTE: Each correct selection is worth one point.

Policy1:

Device1 only
Device2 only
Device3 only
Device4 only
Device2 and Device3 only
Device1 and Device3 only
Device1, Device2, and Device 3

Policy2:

Device1 only
Device2 only
Device3 only
Device4 only
Device2 and Device3 only
Device1 and Device3 only
Device1, Device2, and Device 3

- A. Mastered
- B. Not Mastered

**Answer:** A

**Explanation:**

Reference:

<https://docs.microsoft.com/en-us/intune/device-profile-assign>

#### NEW QUESTION 9

- (Exam Topic 2)

You need to meet the technical requirements for the new HR department computers.

How should you configure the provisioning package? To answer, select the appropriate options in the answer area.

NOTE: Each correct selection is worth one point.

Specify ComputerName as:

"HR" + RAND(4)
"HumanResources-" + RAND(????)
HR-%RAND:4%
HR-????
HumanResources-%RAND:4%

Specify AccountOU as:

CN=Computers, CN=HR, DC=Contoso, DC=com
Computers/HumanResources/Contoso.com
Contoso.com/HR/Computers
OU=Computers, OU=HR, DC=Contoso, DC=com

- A. Mastered
- B. Not Mastered

**Answer:** A

**Explanation:**

Reference:

<https://docs.microsoft.com/en-us/windows/configuration/wcd/wcd-accounts>

#### NEW QUESTION 10

- (Exam Topic 3)

You need to ensure that computer objects can be created as part of the Windows Autopilot deployment. The solution must meet the technical requirements.

To what should you grant the right to create the computer objects?

- A. Server2
- B. Server1
- C. GroupA
- D. DC1

**Answer:** B

**Explanation:**

Reference:

<https://blog.matrixpost.net/set-up-windows-autopilot-production-environment-part-2/>



**NEW QUESTION 10**

- (Exam Topic 3)  
For each of the following statements, select Yes if the statement is true. Otherwise, select No.  
NOTE: Each correct selection is worth one point.

Statements	Yes	No
User1 can create a file named D:\Folder1\file1.txt on Device4 by using Notepad.	<input type="radio"/>	<input type="radio"/>
User2 can remove D:\Folder1 from the list of protected folders on Device2.	<input type="radio"/>	<input type="radio"/>
User3 can create a file named C:\Users\User3\Desktop\file1.txt on Device2 by running a custom Windows PowerShell script.	<input type="radio"/>	<input type="radio"/>

- A. Mastered
- B. Not Mastered

**Answer:** A

**Explanation:**  
A screenshot of a computer Description automatically generated with medium confidence

**NEW QUESTION 12**

- (Exam Topic 3)  
For each of the following statements, select Yes if the statement is true. Otherwise, select No.  
NOTE: Each correct selection is worth one point.

Statements	Yes	No
Device1 is marked as compliant.	<input type="radio"/>	<input type="radio"/>
Device4 is marked as compliant.	<input type="radio"/>	<input type="radio"/>
Device5 is marked as compliant.	<input type="radio"/>	<input type="radio"/>

- A. Mastered
- B. Not Mastered

**Answer:** A

**Explanation:**  
Text Description automatically generated

**NEW QUESTION 16**

- (Exam Topic 3)  
You implement Boundary1 based on the planned changes.  
Which devices have a network boundary of 192.168.1.0/24 applied?

- A. Device2 only
- B. Device3 only
- C. Device 1. Device2. and Device5 only
- D. Device 1, Device2, Device3, and Device4 only

**Answer:** D

**Explanation:**  
Reference:  
<https://docs.microsoft.com/en-us/mem/intune/configuration/network-boundary-windows>

**NEW QUESTION 20**

- (Exam Topic 3)  
Which users can purchase and assign App1?

- A. User3 only
- B. User1 and User3 only
- C. User1, User2, User3, and User4
- D. User1, User3, and User4 only
- E. User3 and User4 only

**Answer:** B

**Explanation:**

Reference:

<https://docs.microsoft.com/en-us/microsoft-store/acquire-apps-microsoft-store-for-business> <https://docs.microsoft.com/en-us/microsoft-store/assign-apps-to-employees>

**NEW QUESTION 22**

- (Exam Topic 4)

You have a Microsoft Deployment Toolkit (MDT) deployment share named Share1. You add Windows 10 images to Share1 as shown in the following table.

Name	In WIM file	Description
Image1	Install1.wim	Default Windows 10 Pro image from the Windows 10 installation media
Image2	Install1.wim	Default Windows 10 Enterprise image from the Windows 10 installation media
Image3	Install2.wim	Default Windows 10 Pro for Workstations image from the Windows 10 installation media
Image4	Custom1.wim	Custom Windows 10 Enterprise image without any additional applications
Image5	Custom2.wim	Custom Windows 10 Enterprise image that includes custom applications

Which images can be used in the Standard Client Task Sequence, and which images can be used in the Standard Client Upgrade Task Sequence?

NOTE: Each correct selection is worth one point.

Standard Client Task Sequence:

Image3 only

Image3, Image4, and Image5 only

Image1, Image2, and Image3 only

Image1, Image2, Image3, and Image4 only

Image1, Image2, Image3, Image4, and Image5

Standard Client Upgrade Task Sequence:

Image3 only

Image3, Image4, and Image5 only

Image1, Image2, and Image3 only

Image1, Image2, Image3, and Image4 only

Image1, Image2, Image3, Image4, and Image5

- A. Mastered
- B. Not Mastered

**Answer:** A

**Explanation:**

Box 1: Image1, Image2, Image3, Image4, and Image5. All images.

Standard Client Task Sequence

Standard Client task sequence. The most frequently used task sequence. Used for creating reference images and for deploying clients in production.

Box 2: Image1, Image2, Image3, and Image4 only. Exclude image5 with applications.

Standard Client Upgrade Task Sequence

Standard Client Upgrade task sequence. A simple task sequence template used to perform an in-place upgrade from Windows 7, Windows 8, or Windows 8.1 directly to Windows 10, automatically preserving existing data, settings, applications, and drivers.

Reference:

<https://docs.microsoft.com/en-us/windows/deployment/deploy-windows-mdt/get-started-with-the-microsoft-dep>

**NEW QUESTION 23**

- (Exam Topic 4)

Note: This question is part of a series of questions that present the same scenario. Each question in the series contains a unique solution that might meet the stated goals. Some question sets might have more than one correct solution, while others might not have a correct solution.

After you answer a question in this section, you will NOT be able to return to it. As a result, these questions will not appear in the review screen.

Your company uses Windows Update for Business.

The research department has several computers that have specialized hardware and software installed.

You need to prevent the video drivers from being updated automatically by using Windows Update. Solution: From the Settings app, you clear the Give me updates for other Microsoft products when I update Windows check box.

Does this meet the goal?

- A. Yes
- B. No

Answer: B

Explanation:

References:

[https://www.stigviewer.com/stig/microsoft\\_windows\\_server\\_2012\\_member\\_server/2013-07-25/finding/WN12](https://www.stigviewer.com/stig/microsoft_windows_server_2012_member_server/2013-07-25/finding/WN12)

NEW QUESTION 25

- (Exam Topic 4)

Your company has a Microsoft Azure Active Directory (Azure AD) tenant.

The company uses Microsoft Intune to manage iOS, Android, and Windows 10 devices.

The company plans to purchase 1,000 iOS devices. Each device will be assigned to a specific user.

You need to ensure that the new iOS devices are enrolled automatically in Intune when the assigned user signs in for the first time.

Which three actions should you perform in sequence? To answer, move the appropriate actions from the list of actions to the answer area and arrange them in the correct order.

Actions

Create a device compliance policy.

Add a Device Enrollment Program (DEP) token.

Assign an enrollment profile.

Create a device enrollment manager (DEM) account.

Create a Windows AutoPilot self-deploying deployment profile.

Create an Apple enrollment profile.

Answer Area

- A. Mastered
- B. Not Mastered

Answer: A

Explanation:

Reference:

<https://docs.microsoft.com/en-us/intune/device-enrollment-program-enroll-ios>

NEW QUESTION 27

- (Exam Topic 4)

You have an Azure Active Directory (Azure AD) tenant named contoso.com that contains the devices shown in the following table.

Name	Operating system	Azure AD status	Mobile device management (MDM)
Device1	Windows 8.1	Registered	None
Device2	Windows 10	Joined	None
Device3	Windows 10	Joined	Microsoft Intune

Contoso.com contains the Azure Active Directory groups shown in the following table.

Name	Members
Group1	Group2, Device1, Device3
Group2	Device2

You add a Windows Autopilot deployment profile. The profile is configured as shown in the following exhibit.



## Create profile ...

Windows PC

- ✓ Basics
- ✓ Out-of-box experience (OOBE)
- ✓ Assignments
- Review + create**

### Summary

#### Basics

Name	Profile1
Description	--
Convert all targeted devices to Autopilot	Yes
Device type	Windows PC

#### Out-of-box experience (OOBE)

Deployment mode	Self-Deploying (preview)
Join to Azure AD as	Azure AD joined
Skip AD connectivity check (preview)	No
Language (Region)	Operating system default
Automatically configure keyboard	Yes
Microsoft Software License Terms	Hide
Privacy settings	Hide
Hide change account options	Hide
User account type	Standard
Allow White Glove OOBE	No
Apply device name template	No

#### Assignments

Included groups	Group1
Excluded groups	--

For each of the following statements, select Yes if the statement is true. Otherwise, select No.  
NOTE: Each correct selection is worth one point.

Statements	Yes	No
If Device1 starts in Out of Box Experience (OOBE) mode, the device will be deployed by using Autopilot.	<input type="radio"/>	<input type="radio"/>
If Device2 starts in Out of Box Experience (OOBE) mode, the device will be deployed by using Autopilot.	<input type="radio"/>	<input type="radio"/>
If Device3 starts in Out of Box Experience (OOBE) mode, the device will be deployed by using Autopilot.	<input type="radio"/>	<input type="radio"/>

- A. Mastered  
B. Not Mastered

Answer: A

#### Explanation:

Box 1: No

Device1 has no Mobile device Management (MDM) configured.

Note: Device1 is running Windows 8.1, and is registered, but not joined. Device1 is in Group1.

Profile1 is assigned to Group1. Box 2: No

Device2 has no Mobile device Management (MDM) configured. Note: Device2 is running Windows 10, and is joined.

Device2 is in Group2. Group2 is in Group1.

Profile1 is assigned to Group1. Box 3: Yes

Device3 has Mobile device Management (MDM) configured. Device3 is running Windows 10, and is joined

Device1 is in Group1.

Profile1 is assigned to Group1.

Mobile device management (MDM) enrollment: Once your Windows 10 device joins Azure AD, Autopilot ensures your device is automatically enrolled with MDMs such as Microsoft Intune. This program can automatically push configurations, policies and settings to the device, and install Office 365 and other business apps without you having to get IT admins to manually sort the device. Intune can also apply the latest updates from Windows Update for Business.

Reference: <https://xo.xello.com.au/blog/windows-autopilot>

#### NEW QUESTION 32

- (Exam Topic 4)

You have a Microsoft 365 E5 subscription that contains the groups shown in the following table.

Name	Description
Group1	Azure AD group that contains a user named User1
Group2	Azure AD group that contains iOS devices

You create a Conditional Access policy named CAPolicy1 that will block access to Microsoft Exchange Online from iOS devices. You assign CAPolicy1 to Group1. You discover that User1 can still connect to Exchange Online from an iOS device. You need to ensure that CAPolicy1 is enforced. What should you do?

- A. Configure a new terms of use (TOU).
- B. Assign CAPolicy1 to Group2.
- C. Enable CAPolicy1
- D. Add a condition in CAPolicy1 to filter for devices.

**Answer: B**

**Explanation:**

Common signals that Conditional Access can take in to account when making a policy decision include the following signals:

\* User or group membership

Policies can be targeted to specific users and groups giving administrators fine-grained control over access.

\* Device

Users with devices of specific platforms or marked with a specific state can be used when enforcing Conditional Access policies.

Use filters for devices to target policies to specific devices like privileged access workstations.

\* Etc.

Reference: <https://learn.microsoft.com/en-us/azure/active-directory/conditional-access/overview>

**NEW QUESTION 36**

- (Exam Topic 4)

Your network contains an Active Directory domain. Active Directory is synced with Microsoft Azure Active Directory (Azure AD).

There are 500 domain-joined computers that run Windows 10. The computers are joined to Azure AD and enrolled in Microsoft Intune.

You plan to implement Windows Defender Exploit Guard.

You need to create a custom Windows Defender Exploit Guard policy, and then distribute the policy to all the computers.

What should you do? To answer, select the appropriate options in the answer area.

NOTE: Each correct selection is worth one point.

Tool to use to configure the settings:

▼

Security & Compliance in Microsoft 365

Windows Configuration Designer

Windows Defender Security Center

Distribution method:

▼

An Azure policy

A Group Policy object (GPO)

An Intune device compliance policy

- A. Mastered
- B. Not Mastered

**Answer: A**

**Explanation:**

References:

<https://docs.microsoft.com/en-us/intune/endpoint-protection-windows-10>

<https://docs.microsoft.com/en-us/windows/security/threat-protection/windows-defender-exploit-guard/enable-ex>

**NEW QUESTION 41**

- (Exam Topic 4)

Note: This question is part of a series of questions that present the same scenario. Each question in the series contains a unique solution that might meet the stated goals. Some question sets might have more than one correct solution, while others might not have a correct solution.

After you answer a question in this section, you will NOT be able to return to it. As a result, these questions will not appear in the review screen.

Your company has an Azure Active Directory (Azure AD) tenant named contoso.com that contains several Windows 10 devices.

When you join new Windows 10 devices to contoso.com, users are prompted to set up a four-digit pin. You need to ensure that the users are prompted to set up a six-digit pin when they join the Windows 10 devices to contoso.com.

Solution: From the Azure Active Directory admin center, you modify the User settings and the Device settings.

Does this meet the goal?

- A. Yes
- B. No

**Answer: B**

**Explanation:**

Instead, from the Azure Active Directory admin center, you configure automatic mobile device management (MDM) enrollment. From the Device Management

admin center, you configure the Windows Hello for Business enrollment options.  
Reference:  
<https://docs.microsoft.com/en-us/intune/protect/windows-hello>

#### NEW QUESTION 44

- (Exam Topic 4)

Your company has a Microsoft Azure Active Directory (Azure AD) tenant.

The company has a Volume Licensing Agreement and uses a product key to activate Windows 10.

You plan to deploy Windows 10 Pro to 200 new computers by using the Microsoft Deployment Toolkit (MDT) and Windows Deployment Services (WDS).

You need to ensure that the new computers will be configured to have the correct product key during the installation.

What should you configure?

- A. a WDS boot image
- B. an MDT task sequence
- C. the Device settings in Azure AD
- D. a Windows AutoPilot deployment profile

**Answer:** A

**Explanation:**

References:

<https://docs.microsoft.com/en-us/windows/deployment/deploy-windows-mdt/deploy-a-windows-10-imageusing>

#### NEW QUESTION 46

- (Exam Topic 4)

Your network contains an Active Directory domain. The domain contains computers that run Windows 10 and are enrolled in Microsoft Intune. Updates are deployed by using Windows Update for Business.

Users in a group named Group1 must meet the following requirements:

- > Update installations must occur any day only between 00:00 and 05:00.
- > Updates must be downloaded from Microsoft and from other company computers that already downloaded the updates.

You need to configure the Windows 10 Update Rings in Intune to meet the requirements.

Which two settings should you modify? To answer, select the appropriate settings in the answer area. NOTE: Each correct selection is worth one point.

Update settings

Servicing channel	Semi-Annual Channel (Targeted)	
*Microsoft product updates	Allow	Block
*Windows drivers	Allow	Block
*Quality update deferral period (days)	0	
*Feature update deferral period (days)	0	
*Set feature update uninstall period (2-60 days)	10	

User experience settings

Automatic update behavior	Notify download	
Restart checks	Allow	Skip
Delivery optimization download mode	Not configured	

- A. Mastered
- B. Not Mastered

**Answer:** A

**Explanation:**

Reference:

<https://github.com/MicrosoftDocs/IntuneDocs/blob/master/intune/windows-update-settings.md> <https://docs.microsoft.com/en-us/intune/delivery-optimization-windows#move-from-existing-update-rings-to-de>

#### NEW QUESTION 48

- (Exam Topic 4)

Your on-premises network contains an Active Directory domain named contoso.com. You perform the following actions:

- > Purchase a new Microsoft 365 subscription.
- > Create a new user named User1.
- > Assign User1 the Security Administrator role.

You need to ensure that User1 can enable Conditional Access policies. What should User1 do first?

- A. Register for Azure Multi-Factor Authentication (MFA).
- B. Request the Conditional Access Administrator role.
- C. Disable Security defaults.
- D. Implement Azure AD Connect.

**Answer: C**

**Explanation:**

Microsoft provides security defaults that ensure a basic level of security enabled in tenants that don't have Azure AD Premium. With Conditional Access, you can create policies that provide the same protection as security defaults, but with granularity. Conditional Access and security defaults aren't meant to be combined as creating Conditional Access policies will prevent you from enabling security defaults.

Incorrect: Not B:

Not required. Global administrator, security administrator, or Conditional Access administrator is enough. Reference: <https://docs.microsoft.com/en-us/azure/active-directory/conditional-access/plan-conditional-access>

**NEW QUESTION 51**

- (Exam Topic 4)

You use Microsoft Intune to manage Windows updates.

You have computers that run Windows 10. The computers are in a workgroup and are enrolled in Intune. The computers are configured as shown in the following table.

Name	Tag	Member of
Computer1	None	Group1
Computer2	Tag2	Group2
Computer3	Tag3	Group3

On each computer, the Select when Quality Updates are received Group Policy setting is configured as shown in the following table.

Name	State	Configuration
Computer1	Not configured	<i>Not applicable</i>
Computer2	Enabled	Deferral period of 5 days
Computer3	Disabled	<i>Not applicable</i>

You have Windows 10 update rings in Intune as shown in the following table.

Name	Quality update deferral period (days)	Scope (Tags)	Assignment
Ring1	2	Tag1	Group1
Ring2	7	Tag2	Group2
Ring3	14	Tag2	Group3

For each of the following statements, select Yes if the statement is true. Otherwise, select No.

NOTE: Each correct selection is worth one point.

**Answer Area**

Statements	Yes	No
On Computer1, quality updates will be deferred for two days.	<input type="radio"/>	<input type="radio"/>
On Computer2, quality updates will be deferred for seven days.	<input type="radio"/>	<input type="radio"/>
On Computer3, quality updates will be deferred for 14 days.	<input type="radio"/>	<input type="radio"/>

- A. Mastered
- B. Not Mastered

**Answer: A**

**Explanation:**



## Answer Area

Statements	Yes	No
On Computer1, quality updates will be deferred for two days.	<input type="radio"/>	<input checked="" type="radio"/>
On Computer2, quality updates will be deferred for seven days.	<input checked="" type="radio"/>	<input type="radio"/>
On Computer3, quality updates will be deferred for 14 days.	<input type="radio"/>	<input checked="" type="radio"/>

### NEW QUESTION 55

- (Exam Topic 4)

Note: This question is part of a series of questions that present the same scenario. Each question in the series contains a unique solution that might meet the stated goals. Some question sets might have more than one correct solution, while others might not have a correct solution.

After you answer a question in this section, you will NOT be able to return to it. As a result, these questions will not appear in the review screen.

Your company has an Azure Active Directory (Azure AD) tenant named contoso.com and a Microsoft Intune subscription.

Contoso.com contains a user named user1@contoso.com.

You have a computer named Computer1 that runs Windows 8.1.

You need to perform an in-place upgrade of Computer1 to Windows 10.

Solution: You assign an Enterprise Mobility + Security license to User1. You instruct User1 to sign in to Computer1.

Does this meet the goal?

A. Yes

B. No

**Answer: B**

### NEW QUESTION 56

- (Exam Topic 4)

You have a Microsoft 365 subscription.

You have 10 computers that run Windows 10 and are enrolled in mobile device management (MDM) You need to deploy the Microsoft Office 365 ProPlus suite to all the computers. What should you do?

A. From Microsoft Azure Active Directory (Azure AD), add an app registration.

B. From the Device Management admin center, add an app.

C. From the Device Management admin center, create a Windows 10 device profile.

D. From Microsoft Azure Active Directory (Azure AD), add an enterprise application

**Answer: B**

#### Explanation:

Reference:

<https://docs.microsoft.com/en-us/windows/client-management/mdm/enterprise-app-management#application-management>

### NEW QUESTION 58

- (Exam Topic 4)

You have 200 computers that run Windows 10. The computers are joined to Microsoft Azure Active Directory (AD) and enrolled in Microsoft Intune.

You need to enable self-service password reset on the sign-in screen.

Which settings should you configure from the Microsoft Intune blade?

A. Device configuration

B. Device compliance

C. Device enrollment

D. Conditional access

**Answer: A**

#### Explanation:

References:

<https://docs.microsoft.com/en-us/azure/active-directory/authentication/tutorial-sspr-windows>

### NEW QUESTION 62

- (Exam Topic 4)

Note: This question is part of a series of questions that present the same scenario. Each question in the series contains a unique solution that might meet the stated goals. Some question sets might have more than one correct solution, while others might not have a correct solution.

After you answer a question in this section, you will NOT be able to return to it. As a result, these questions will not appear in the review screen.

You need to ensure that feature and quality updates install automatically during a maintenance window. Solution: From the Windows Update settings, you enable Configure Automatic Updates, select 4-Auto download and schedule the install, and then enter a time.

Does this meet the goal?

A. Yes

B. No

Answer: B

Explanation:

Reference:  
<https://docs.microsoft.com/en-us/sccm/sum/deploy-use/automatically-deploy-software-updates>

NEW QUESTION 66

- (Exam Topic 4)  
Your company standardizes on Windows 10 Enterprise for all users.  
Some users purchase their own computer from a retail store. The computers run Windows 10 Pro.  
You need to recommend a solution to upgrade the computers to Windows 10 Enterprise, join the computers to Microsoft Azure Active Directory (Azure AD), and install several Microsoft Store apps. The solution must meet the following requirements:

- > Ensure that any applications installed by the users are retained.
- > Minimize user intervention.

What is the best recommendation to achieve the goal? More than one answer choice may achieve the goal. Select the BEST answer.

- A. Microsoft Deployment ToolKit (MDT)
- B. Windows Deployment Services (WDS)
- C. a Windows Configuration Designer provisioning package
- D. Windows AutoPilot

Answer: C

Explanation:

You use Windows Configuration Designer to create a provisioning package (.ppkg) that contains customization settings. You can apply the provisioning package to a device running Windows 10.

NEW QUESTION 71

- (Exam Topic 4)  
You have 200 computers that run Windows 10.  
You need to create a provisioning package to configure the following tasks:

- > Remove the Microsoft News and the Xbox Microsoft Store apps.
- > Add a VPN connection to the corporate network.

Which two customizations should you configure? To answer, select the appropriate customizations in the answer area.  
NOTE: Each correct selection is worth one point.

Available customizations

View: 

All settings

Search

Cellular

Certificates

CleanPC

Connections

ConnectivityProfiles

CountryAndRegion

DataMarketplace

DesktopBackgroundAndColors

DeviceFormFactor

DeviceManagement

DMClient

EditionUpgrade

Folders

HotSpot

Licensing

Maps

OOBE

Personalization

Policies

ProvisioningCommands

SharedPC

SMISettings

A. Mastered

B. Not Mastered

**Answer:** A

**Explanation:**

Connectivityprofiles Policies

References:

<https://docs.microsoft.com/en-us/windows/configuration/wcd/wcd-connectivityprofiles> <https://docs.microsoft.com/en-us/windows/client-management/mdm/policy-configuration-service-provider#appl> <https://docs.microsoft.com/en-us/windows/configuration/wcd/wcd-policies>

#### NEW QUESTION 74

- (Exam Topic 4)

You have a Microsoft 365 tenant that contains the devices shown in the following table.

Name	Member of
Device1	Group1
Device2	Group1
Device3	Group1

The devices are managed by using Microsoft Intune.

You create a compliance policy named Policy1 and assign Policy1 to Group1. Policy1 is configured to mark a device as Compliant only if the device security settings match the settings specified in the policy.

You discover that devices that are not members of Group1 are shown as Compliant.

You need to ensure that only devices that are assigned a compliance policy can be shown as Compliant. All other devices must be shown as Not compliant. What should you do?

- A. From Tenant administration, modify the Diagnostic settings.
- B. From Device compliance, configure the Compliance policy settings.
- C. From Endpoint security, configure the Conditional access
- D. From Policy1, modify the actions for noncompliance.

**Answer:** B

**Explanation:**

Reference:

<https://docs.microsoft.com/en-us/mem/intune/protect/device-compliance-get-started>

#### NEW QUESTION 77

- (Exam Topic 4)

You need to assign the same deployment profile to all the computers that are configured by using Windows Autopilot.

Which two actions should you perform? Each correct answer presents part of the solution.

NOTE: each correct selection is worth one point.

- A. Join the computers to Microsoft Azure Active Directory (Azure AD)
- B. Assign a Windows AutoPilot deployment profile to a group
- C. Join the computers to an on-premises Active Directory domain
- D. Create a Microsoft Azure Active Directory (Azure AD) group that has dynamic membership rules and uses the operatingSystem tag
- E. Create a Group Policy object (GPO) that is linked to a domain
- F. Create a Microsoft Azure Active Directory (Azure AD) group that has dynamic membership rules and uses the ZTDID tag

**Answer:** BF

**Explanation:**

References:

<https://www.petervanderwoude.nl/post/automatically-assign-windows-autopilot-deployment-profile-to-windows>

#### NEW QUESTION 82

- (Exam Topic 4)

You have a Microsoft 365 subscription.

You have a conditional access policy that requires multi-factor authentication (MFA) for users in a group name Sales when the users sign in from a trusted location. The policy is configured as shown in the exhibit. (Click the Exhibit tab.)

Policy1

Info

Delete

\* Name

Policy1

Assignments

Users and groups 

Info

Specific users included

>

Cloud apps or actions 

Info

1 app included

>

Conditions 

Info

1 condition selected

>

Access controls

Grant 

Info

1 control selected

>

Session 

Info

0 controls selected

>

Enable policy

On

Off

You create a compliance policy.  
You need to ensure that the users are authenticated only if they are using a compliant device. What should you configure in the conditional access policy?

- A. a condition
- B. a session control
- C. a cloud app
- D. a grant control

Answer: A

Explanation:

The device state condition can be used to exclude devices that are hybrid Azure AD joined and/or devices marked as compliant with a Microsoft Intune compliance policy from an organization's Conditional Access policies.  
Device state is located on the Condition tab. Reference:  
<https://docs.microsoft.com/en-us/azure/active-directory/conditional-access/concept-conditional-access-condition>

NEW QUESTION 85

- (Exam Topic 4)

Your network contains an Active Directory domain. The domain contains computers that are managed by using Microsoft Endpoint Configuration Manager. You plan to integrate Configuration Manager and Azure as part of a Desktop Analytics implementation.

You create a new organizational unit (OU) and place several test computers that run Windows 10 into the OU. You need to collect diagnostic data from the test computers to Desktop Analytics.


- App usage and insights data
- Health monitoring data
- Deployment status data

The solution must minimize the data collected.

Which two Group Policy settings should you configure? To answer, select the appropriate settings in the answer area.

NOTE: Each correct selection is worth one point.

Answer Area

 Allow Telemetry	Not configured
 This setting allows you to enable diagnostic data from this device to be processed by Update Compliance.	Not configured
 Configure the Commercial ID	Not configured
 Configure diagnostic data upload endpoint for Desktop Analytics	Not configured
 Configure telemetry opt-in change notifications.	Not configured
 Configure telemetry opt-in setting user interface.	Not configured
 Disable deleting diagnostic data	Not configured
 Disable diagnostic data viewer.	Not configured
 Configure Authenticated Proxy usage for the Connected User Experience and Telemetry service	Not configured
 Limit Enhanced diagnostic data to the minimum required by Windows Analytics	Not configured
 Configure Connected User Experiences and Telemetry	Not configured
 Do not show feedback notifications	Not configured
 Configure collection of browsing data for Desktop Analytics	Not configured

- A. Mastered
- B. Not Mastered

Passing Certification Exams Made Easy

visit - <https://www.surepassexam.com>



**Answer:** A

**Explanation:**

Graphical user interface, application, table Description automatically generated with medium confidence

Reference:

<https://docs.microsoft.com/en-us/enterprise-threat-detection/collector/collector-client-configuration-windows-10> <https://docs.microsoft.com/en-us/mem/configmgr/desktop-analytics/enable-data-sharing>

**NEW QUESTION 88**

- (Exam Topic 4)

You have an Azure Active Directory (Azure AD) tenant that syncs to an on-premises Active Directory domain.

The tenant contains computers that run Windows 10. The computers are hybrid Azure AD joined and enrolled in Microsoft Intune. The Microsoft Office settings on the computers are configured by using a Group Policy Object (GPO).

You need to migrate the GPO to Intune.

Which three actions should you perform in sequence? To answer, move the appropriate actions from the list of actions to the answer area and arrange them in the correct order.

**Actions**

Import an ADMX file.

Assign the policy.

Create a configuration profile.

Assign the profile.

Configure the Administrative Templates settings.

Set a scope tag to the policy.

Create a compliance policy.

**Answer Area**

>

<

^

v

- A. Mastered
- B. Not Mastered

**Answer:** A

**Explanation:**

Reference:

<https://docs.microsoft.com/en-us/mem/intune/configuration/administrative-templates-windows>

**NEW QUESTION 89**

- (Exam Topic 4)

Note: This question is part of a series of questions that present the same scenario. Each question in the series contains a unique solution that might meet the stated goals. Some question sets might have more than one correct solution, while others might not have a correct solution.

After you answer a question in this section, you will NOT be able to return to it. As a result, these questions will not appear in the review screen.

You have a computer named Computer1 that runs Windows 10.

You save a provisioning package named Package1 to a folder named C:\Folder1. You need to apply Package1 to Computer1.

Solution: From File Explorer, you go to C:\Folder1, and then you double-click the Package1.ppkg file.

Does this meet the goal?

- A. Yes
- B. No

**Answer:** B

**Explanation:**

To install a provisioning package, navigate to Settings > Accounts > Access work or school > Add or remove a provisioning package > Add a package, and select the package to install.

Reference:

<https://docs.microsoft.com/en-us/windows/configuration/provisioning-packages/provisioning-apply-package>

**NEW QUESTION 92**

- (Exam Topic 4)

Your network contains an on-premises Active Directory domain named contoso.com that syncs to Azure Active Directory (Azure AD).

You have the Windows 10 devices shown in the following table.

Name	Active Directory	Endpoint Configuration Manager agent	Microsoft Intune	Azure AD
Device1	Joined	Not installed	Enrolled	Registered
Device2	Not joined	Installed	Enrolled	Registered
Device3	Not joined	Not installed	Enrolled	Joined
Device4	Joined	Installed	Not enrolled	Registered
Device5	Not joined	Installed	Not enrolled	Joined
Device6	Joined	Installed	Enrolled	Joined

You need to ensure that you can use co-management to manage all the Windows 10 devices. Which two actions should you perform? Each correct answer

presents part of the solution. NOTE: Each correct selection is worth one point.

- A. Join Device 1, Device2, and Device4 to Azure AD.
- B. Unjoin Device3, Device5, and Device6 from Azure AD, and then register the devices in Azure AD.
- C. Enroll Device4 and Device5 in Intune.
- D. Join Device2, Device3, and Device5 to the domain.
- E. Install the Endpoint Configuration Manager agent on Device1 and Device3.

**Answer:** CE

**Explanation:**

Co-management enables you to concurrently manage Windows 10 devices by using both Configuration Manager and Microsoft Intune. Co-management requires Configuration Manager version 1710 or later and enrollment in Microsoft Intune. Windows 10 devices must be hybrid Azure AD joined. Reference: <https://docs.microsoft.com/en-us/mem/configmgr/comanage/overview>

**NEW QUESTION 95**

- (Exam Topic 4)  
You have a Microsoft Azure Active Directory (Azure AD) tenant named contoso.com. All Windows 10 devices are enrolled in Microsoft Intune. You configure the following settings in Windows Information Protection (WIP):  
> Protected apps: App1  
> Exempt apps: App2  
> Windows Information Protection mode: Silent App1, App2, and App3 use the same file format. You create a file named File1 in App1. You need to identify which apps can open File1.  
What apps should you identify? To answer, select the appropriate options in the answer area, NOTE: Each correct selection is worth one point.

You can open File1 from:

☐

App1 only

App1, and App2 only

App1 and App3 only

App1, App2, and App3

An action will be logged when you attempt to open File1 from:

☐

App1 only

App3 only

App1, and App2 only

App2 and App3 only

App1, App2, and App3

- A. Mastered
- B. Not Mastered

**Answer:** A

**Explanation:**

Reference: <https://docs.microsoft.com/en-us/windows/security/information-protection/windows-information-protection/creating-a-policy> <https://docs.microsoft.com/en-us/windows/security/information-protection/windows-information-protection/creating-a-policy>

**NEW QUESTION 98**

- (Exam Topic 4)  
You have an Azure Active Directory (Azure AD) tenant that contains the users shown in the following table.

Name	Member of	Multi-factor authentication (MFA) status
User1	Group1	Disabled
User2	Group1	Enforced

MFA has a trusted IP address range of 123.30.20.0/24. You have the Azure AD named locations shown in the following table.

Name	IP address range	Trusted
Location1	64.10.10.0/24	Yes
Location2	210.77.11.0/24	No

You create a Conditional Access policy that has the following settings:

- > Name: CAPolicy1
- > Assignments
  - Users or workload identities
  - Include: Group1
  - Cloud apps or actions: App1 Conditions

- Locations
- Include: All trusted locations

> Access controls

- Grant access
- Require multi-factor authentication

For each of the following statements, select Yes if the statement is true. Otherwise, select No.

NOTE: Each correct selection is worth one point.

Statements	Yes	No
If User1 connects to App1 from a device that has an IP address of 210.77.11.10, the user will be prompted for MFA.	<input type="radio"/>	<input type="radio"/>
If User1 connects to App1 from a device that has an IP address of 64.10.10.15, the user will be prompted for MFA.	<input type="radio"/>	<input type="radio"/>
If User2 connects to App1 from a device that has an IP address of 123.30.20.10, the user will be prompted for MFA.	<input type="radio"/>	<input type="radio"/>

- A. Mastered
- B. Not Mastered

**Answer:** A

**Explanation:**

Box 1: Yes

Location2 is not trusted.

Box 2: No

Location1 is trusted.

Box 3: No

MFA IP range is also trusted.

Reference:

<https://docs.microsoft.com/en-us/azure/active-directory/conditional-access/howto-conditional-access-policy-all>

**NEW QUESTION 100**

- (Exam Topic 4)

You have a computer named Computer1 that runs Windows 8.1.

You plan to perform an in-place upgrade of Computer1 to Windows 10 by using an answer file. You need to identify which tool to use to create the answer file. What should you identify?

- A. System Configuration (Msconfig.exe)
- B. Windows Configuration Designer
- C. Windows System Image Manager (Windows SIM)
- D. Windows Deployment Services (WDS)

**Answer:** C

**Explanation:**

Reference:

<https://thesleepyadmins.com/2019/05/31/create-windows-10-answer-file/>

**NEW QUESTION 104**

- (Exam Topic 4)

You have 200 computers that run Windows 10. The computers are joined to Microsoft Azure Active Directory (Azure AD) and enrolled in Microsoft Intune.

You need to set a custom image as the wallpaper and sign-in screen.

Which two settings should you configure in Device restrictions? To answer, select the appropriate settings in the answer area.

NOTE: Each correct selection is worth one point.

Create profile

\* Name

MD\_101

Description

Enter a description...

\* Platform

Windows 10 and later

\* Profile type

Device restrictions

Settings

Configure

Scope (Tags)

0 scope(s) selected

Device restrictions

Windows 10 and later

Select a category to configure settings.

App Store ⓘ

13 settings available

>

Cellular and connectivity ⓘ

15 settings available

>

Cloud and Storage ⓘ

4 settings available

>

Cloud Printer ⓘ

6 settings available

>

Control Panel and Settings ⓘ

16 settings available

>

Display ⓘ

2 settings available

>

General ⓘ

24 settings available

>

Locked Screen Experience ⓘ

6 settings available

>

Messaging ⓘ

3 settings available

>

Microsoft Edge Browser ⓘ

28 settings available

>

Network proxy ⓘ

8 settings available

>

Password ⓘ

13 settings available

>

Per-app privacy exceptions ⓘ

1 setting available

>

Personalization ⓘ

1 setting available

>

- A. Mastered  
B. Not Mastered

**Answer:** A

**Explanation:**

Sign-in screen, or Locked screen, image is set under Locked screen experience Wallpaper image, or Desktop background picture, URL is set under Personalization. References:  
<https://docs.microsoft.com/en-us/intune/device-restrictions-windows-10>

**NEW QUESTION 105**

- (Exam Topic 4)

Note: This question is part of a series of questions that present the same scenario. Each question in the series contains a unique solution that might meet the stated goals. Some question sets might have more than one correct solution, while others might not have a correct solution.

After you answer a question in this section, you will NOT be able to return to it. As a result, these questions will not appear in the review screen.

You need to ensure that feature and quality updates install automatically during a maintenance window.

Solution: In Group policy, from the Maintenance Scheduler settings, you configure Automatic Maintenance Activation Boundary.

Does this meet the goal?

- A. Yes  
B. No

**Answer:** A



**Explanation:**

<https://learn.microsoft.com/en-us/windows-server/administration/windows-server-update-services/deploy/4-conf>

**NEW QUESTION 106**

- (Exam Topic 4)

Your network contains an Active Directory domain. The domain contains 5,000 computers that run Windows 10.

All users use Roaming User Profiles.

Some users report that it takes a long time to sign in to the computers. You discover that the users have user profiles that are larger than 1 GB. You need to reduce the amount of time it takes for the users to sign in. What should you configure?

- A. Delivery Optimization in the Settings app
- B. Folder Redirection by using a Group Policy Object (GPO)
- C. Microsoft User Experience Virtualization (UE-V) by using PowerShell
- D. Sync your settings in the Settings app

**Answer: C**

**Explanation:**

Reference:

<https://docs.microsoft.com/en-us/windows/configuration/ue-v/uev-for-windows>

**NEW QUESTION 107**

- (Exam Topic 4)

Note: This question is part of a series of questions that present the same scenario. Each question in the series contains a unique solution that might meet the stated goals. Some question sets might have more than one correct solution, while others might not have a correct solution.

After you answer a question in this section, you will NOT be able to return to it. As a result, these questions will not appear in the review screen.

You have a computer named Computer1 that runs Windows 10.

You save a provisioning package named Package1 to a folder named C:\Folder1. You need to apply Package1 to Computer1.

Solution: From the Settings app, you select Access work or school, and then you select Add or remove a provisioning package.

Does this meet the goal?

- A. Yes
- B. No

**Answer: A**

**Explanation:**

To install a provisioning package, navigate to Settings > Accounts > Access work or school > Add or remove a provisioning package > Add a package, and select the package to install.

Reference:

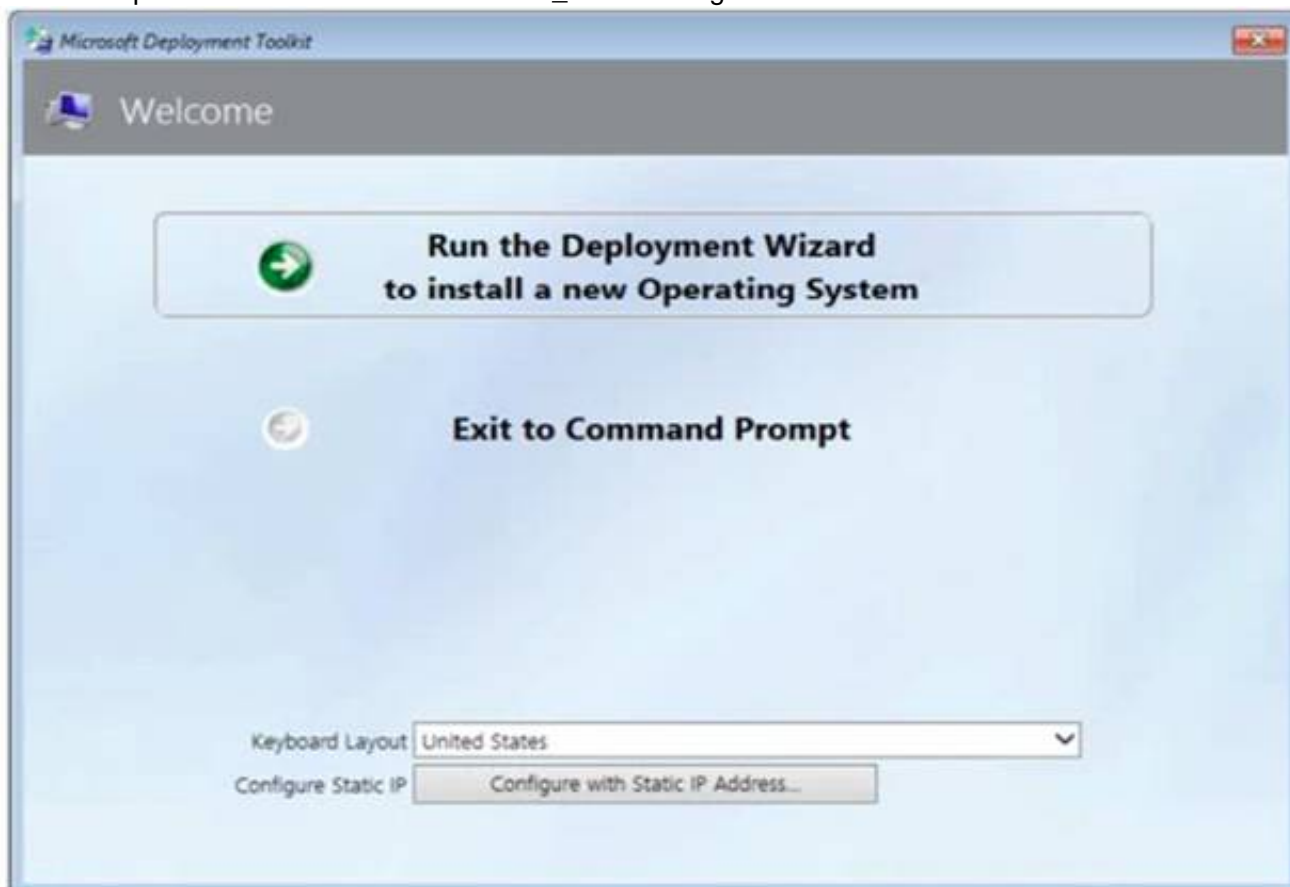
<https://docs.microsoft.com/en-us/windows/configuration/provisioning-packages/provisioning-apply-package>

**NEW QUESTION 109**

- (Exam Topic 4)

You have a Microsoft Deployment Toolkit (MDT) server named MDT1.

When computers start from the LiteTouchPE\_x64.iso image and connect to MDT1, the welcome screen appears as shown in the following exhibit.



You need to prevent the welcome screen from appearing when the computers connect to MDT1.

Which three actions should you perform in sequence? To answer move the appropriate actions from the list of actions to the answer area and arrange them in the correct order.

Actions

Modify the CustomSettings.ini file.

Update the deployment share.

Modify the Bootstrap.ini file.

Replace the ISO image.

Modify the task sequence.

Answer Area

>

<

- A. Mastered
- B. Not Mastered

Answer: A

Explanation:

Box 1: Modify the Bootstrap.ini file.  
Add this to your bootstrap.ini file and then update the deployment share and use the new boot media created in that process:  
SkipBDDWelcome=YES  
Box 2: Modify the CustomSettings.ini file. SkipBDDWelcome  
Indicates whether the Welcome to Windows Deployment wizard page is skipped.  
For this property to function properly it must be configured in both CustomSettings.ini and BootStrap.ini. BootStrap.ini is processed before a deployment share (which contains CustomSettings.ini) has been selected.  
Box 3: Update the deployment share. Reference:  
<https://docs.microsoft.com/en-us/mem/configmgr/mdt/toolkit-reference#table-6-deployment-wizard-pages>

NEW QUESTION 111

- (Exam Topic 4)  
You have an Azure Active Directory (Azure AD) tenant named contoso.com that contains a user named User1. User1 has a user principal name (UPN) of user1@contoso.com.  
You join a Windows 10 device named Client1 to contoso.com.  
You need to add User1 to the local Administrators group of Client1.  
How should you complete the command? To answer, select the appropriate options in the answer area.  
NOTE: Each correct selection is worth one point.

net accounts

net localgroup

net user

Administrators /add "

AzureAD

CONTOSO

UPN

\user1@contoso.com"

- A. Mastered
- B. Not Mastered

Answer: A

Explanation:

Box 1: net localgroup  
Add user to group from command line (CMD)  
Windows provides command line utilities to manager user groups. In this post, learn how to use the command net localgroup to add user to a group from command prompt'  
For example to add a user 'John' to administrators group, we can run the below command. net localgroup administrators John /add  
Box 2: Contoso  
The domain of the user is Contoso.  
Reference: <https://www.windows-commandline.com/add-user-to-group-from-command-line/>

NEW QUESTION 115

- (Exam Topic 4)  
You manage a Microsoft Deployment Toolkit (MDT) deployment share named DS1. OS! contains an Out-of-Box Drivers folder named Windows 10 x64 that has subfolders in the format of (make name)\ (model name).  
You need to modify a deployment task sequence to ensure that all the drivers In the folder that match the make and model of the computers are installed without using PnP detection or selection profiles.  
What should you do? To answer, select the appropriate options in the answer area. NOTE: Each correct selection is worth one point.

Answer Area

Phase that you must modify in the deployment task sequence:

Preinstall

Install

Preinstall

Validation

Task that you must use to specify which folder contains the drivers:

Inject Drivers

Gather

Inject Drivers

Set Task Sequence Variable

Validate

- A. Mastered
- B. Not Mastered

**Answer:** A

**Explanation:**

Box 1: Preinstall PREINSTALL

Completes any tasks that need to be done (such as creating new partitions) before the target operating system is deployed.

Box 2: Inject Drivers Inject Drivers

This task sequence step injects drivers that have been configured for deployment to the target computer.

The unique properties and settings for the Inject Drivers task sequence step type are:

\* Property: TypeSet this read-only type to Inject Drivers.

\* Settings

Install only matching drivers: Injects only the drivers that the target computer requires and that match what is available in Out-of-Box Drivers

Install all drivers: Installs all drivers

Selection profile: Installs all drivers in the selected profile

Reference: <https://docs.microsoft.com/en-us/mem/configmgr/mdt/toolkit-reference>

**NEW QUESTION 119**

- (Exam Topic 4)

Your company has several Windows 10 devices that are enrolled in Microsoft Inline.

You deploy a new computer named Computer1 that runs Windows 10 and is in a workgroup. You need to enroll Computer1 in Intune.

Solution: From Computer1, you sign in to <https://portal.manage.microsoft.com> and use the Devices tab. Does this meet the goal?

- A. Yes
- B. No

**Answer:** B

**Explanation:**

Use MDM enrolment.

MDM only enrollment lets users enroll an existing Workgroup, Active Directory, or Azure Active directory joined PC into Intune. Users enroll from Settings on the existing Windows PC.

Reference:

<https://docs.microsoft.com/en-us/mem/intune/enrollment/windows-enrollment-methods>

**NEW QUESTION 120**

- (Exam Topic 4)

You have a public computer named Public1 that runs Windows 10. Users use Public1 to browse the Internet by using Microsoft Edge.

You need to view events associated with website phishing attacks on Public1. Which Event Viewer log should you view?

- A. Applications and Services Logs > Microsoft\Windows > DeviceGuard > Operational
- B. Applications and Services Logs > Microsoft > Windows > Security-Mitigations> User Mode
- C. Applications and Services Logs > Microsoft > Windows > SmartScreen > Debug
- D. Applications and Services Logs > Microsoft > Windows > Windows Defender > Operational

**Answer:** C

**Explanation:**

Reference:

<https://docs.microsoft.com/en-us/windows/security/threat-protection/microsoft-defender-smartscreen/microsoft-defender-smartscreen-overview#viewing-windows-event-logs-for-microsoft-defender-smartscreen>

**NEW QUESTION 122**

- (Exam Topic 4)

You have a computer named Computer1 that runs Windows 10. Computer is used by a user named User1. You need to ensure that when User1 opens websites from untrusted locations by using Microsoft Edge,

Microsoft Edge runs in isolated container.

What should you do first?

- A. From Windows Features, turn on Windows Defender Application Guard.
- B. From Windows Security, configure the Device security settings.
- C. From Windows Security, configure the Virus & threat protection settings.
- D. From Windows Features, turn on Hyper-V Platform.

**Answer:** A

**Explanation:**

Reference:

<https://docs.microsoft.com/en-us/windows/security/threat-protection/windows-defender-application-guard/wd-a> <https://docs.microsoft.com/en-us/windows/security/threat-protection/windows-defender-application-guard/instal>

**NEW QUESTION 125**

- (Exam Topic 4)

Your network contains an Active Directory domain that is synced to Microsoft Azure Active Directory (Azure AD). The domain contains 500 laptops that run Windows 8.1 Professional. The users of the laptops work from home.

Your company uses Microsoft Intune, the Microsoft Deployment Toolkit (MDT), and Windows Configuration Designer to manage client computers.

The company purchases 500 licenses for Windows 10 Enterprise.

You verify that the hardware and applications on the laptops are compatible with Windows 10.

The users will bring their laptop to the office, where the IT department will deploy Windows 10 to the laptops while the users wait. You need to recommend a deployment method for the laptops that will retain their installed applications. The solution must minimize how long it takes to perform the deployment. What should you include in the recommendation?

- A. an in-place upgrade
- B. a clean installation by using a Windows Configuration Designer provisioning package
- C. Windows AutoPilot
- D. a clean installation and the User State Migration Tool (USMT)

**Answer:** A

**Explanation:**

References:  
<https://docs.microsoft.com/en-us/windows/deployment/windows-10-deployment-scenarios#in-place-upgrade>

**NEW QUESTION 127**

- (Exam Topic 4)  
You have a Microsoft 365 subscription that contains two users named User1 and User2. You need to ensure that the users can perform the following tasks:

- User1 must be able to create groups and manage users.
- User2 must be able to reset passwords for nonadministrative users.

The solution must use the principle of least privilege. Which role should you assign to each user? To answer, drag the appropriate roles to the correct users. Each role may be used once, more than once, or not at all. You may need to drag the split bar between panes or scroll to view content.

Roles

Global Administrator

Helpdesk Administrator

Security Administrator

User Administrator

Answer Area

User1:

User2:

- A. Mastered
- B. Not Mastered

**Answer:** A

**Explanation:**

Box 1: User Administrator  
User admin  
Assign the user admin role to users who you want to access and manage user password resets and manage users and groups. They can also open and manage support requests to Microsoft support.  
Box 2: Helpdesk Administrator  
Assign the Helpdesk admin role to users who want to reset passwords, force users to sign out for any security issues. They can also open and manage support requests to Microsoft support. The Helpdesk admin can only help non-admin users and users assigned these roles: Directory reader, Guest inviter, Helpdesk admin, Message center reader, and Reports reader.  
Reference: <https://docs.microsoft.com/en-us/microsoft-365/admin/add-users/admin-roles-page>

**NEW QUESTION 130**

- (Exam Topic 4)  
You have a server named Server1 and computers that run Windows 8.1. Server1 has the Microsoft Deployment Toolkit (MDT) installed. You plan to upgrade the Windows 8.1 computers to Windows 10 by using the MDT deployment wizard. You need to create a deployment share on Server1. What should you do on Server1, and what are the minimum components you should add to the MDT deployment share? To answer, select the appropriate options in the answer area.  
NOTE: Each correct selection is worth one point.

On Server1:

Import the Deployment Image Servicing and Management (DISM) PowerShell module.

Import the WindowsAutopilotIntune Windows PowerShell module.

Install the Windows Assessment and Deployment Kit (Windows ADK).

Install the Windows Deployment Services server role.

Add to the MDT deployment share:

Windows 10 image and package only

Windows 10 image and task sequence only

Windows 10 image only

Windows 10 image, task sequence, and package

- A. Mastered
- B. Not Mastered



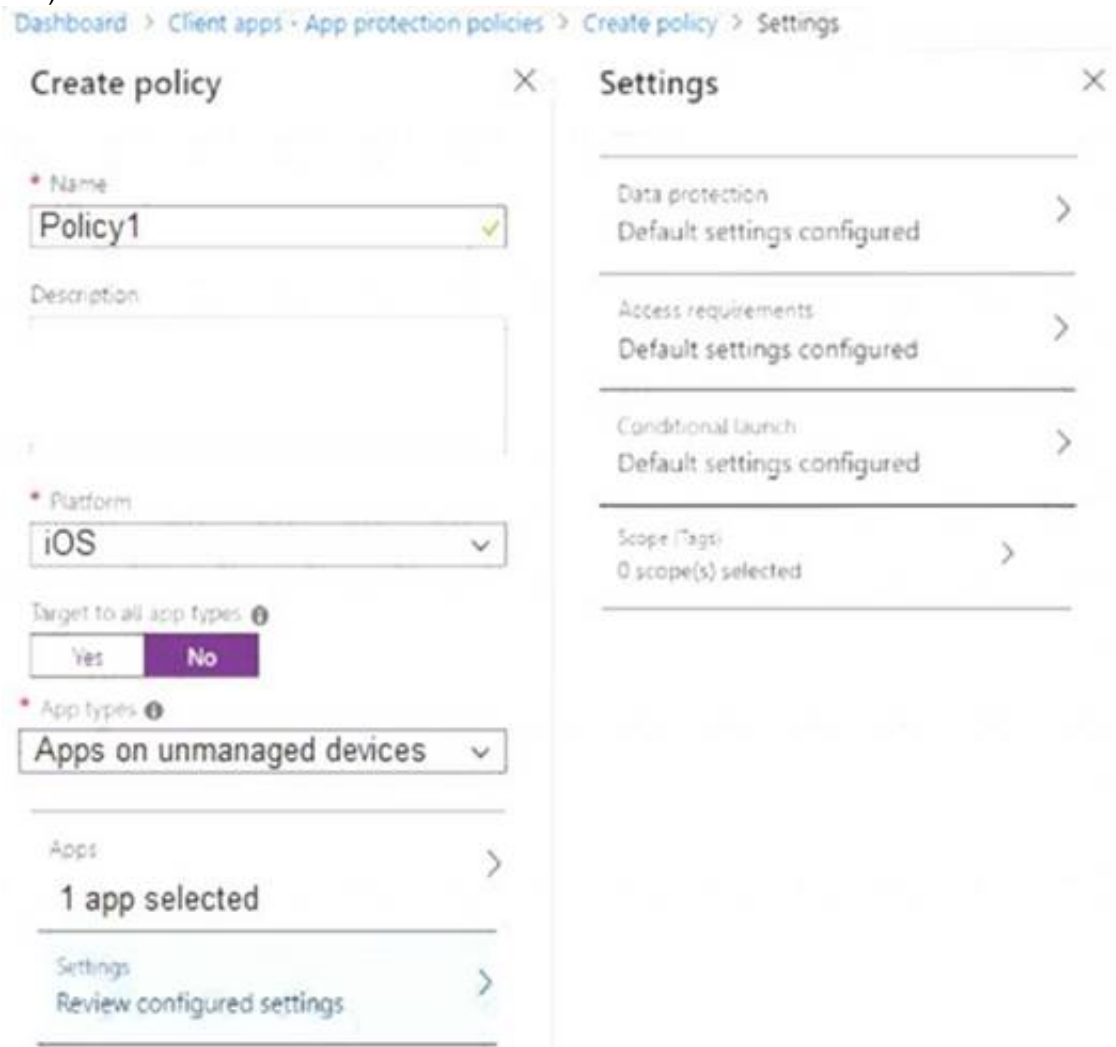
**Answer:** A

**Explanation:**

Box 1: Install the Windows Deployment Services role. Install and initialize Windows Deployment Services (WDS) On the server:  
Open an elevated Windows PowerShell prompt and enter the following command: Install-WindowsFeature -Name WDS -IncludeManagementTools  
WDSUTIL /Verbose /Progress /Initialize-Server /Server:MDT01 /RemInst:"D:\RemoteInstall" WDSUTIL /Set-Server /AnswerClients:All  
Box 2: Windows 10 image and task sequence only Create the reference image task sequence  
In order to build and capture your Windows 10 reference image for deployment using MDT, you will create a task sequence.  
Reference:  
<https://docs.microsoft.com/en-us/windows/deployment/deploy-windows-mdt/prepare-for-windows-deployment>  
<https://docs.microsoft.com/en-us/windows/deployment/deploy-windows-mdt/create-a-windows-10-reference-im>

**NEW QUESTION 133**

- (Exam Topic 4)  
You have a Microsoft 365 subscription.  
Users have iOS devices that are not enrolled in Microsoft 365 Device Management.  
You create an app protection policy for the Microsoft Outlook app as shown in the exhibit. (Click the Exhibit tab.)



You need to configure the policy to meet the following requirements:

- Prevent the users from using the Outlook app if the operating system version is less than 12.0.0.
- Require the users to use an alphanumeric passcode to access the Outlook app.

What should you configure in an app protection policy for each requirement? To answer, select the appropriate options in the answer area.  
NOTE: Each correct selection is worth one point.

Prevent the users from using Outlook if the operating system version is less than 12.0.0:	<div><div></div><div>Access requirements</div><div>Conditional launch</div><div>Data protection</div><div>Scope</div></div>
Require the users to use an alphanumeric passcode to access Outlook:	<div><div></div><div>Access requirements</div><div>Conditional launch</div><div>Data protection</div><div>Scope</div></div>

- A. Mastered
- B. Not Mastered

**Answer:** A

**Explanation:**

References:  
<https://docs.microsoft.com/en-us/intune/app-protection-policy-settings-ios>

**NEW QUESTION 138**

- (Exam Topic 4)  
You have a Microsoft 365 E5 subscription that contains the users shown in the following table.

Name	Member of	Multi-factor authentication (MFA) status
User1	Group1	Disabled
User2	Group1, Group2	Enforced

You have the devices shown in the following table.

Name	Platform
Device1	Windows 11
Device2	Android

You have a Conditional Access policy named CAPolicy1 that has the following settings:

- > Assignments
  - Users or workload identities: Group1
  - \_ Cloud apps or actions: All cloud apps Conditions
- = Device platforms: include: Windows, Android
- Grant access controls: Require multi-factor authentication

You have a Conditional Access named CAPolicy2 that has the following settings:

- > Assignments
  - Users or workload identities: Group2
  - \_ Cloud apps or actions: All cloud apps Conditions
- = Device platforms: Android
- Access controls: Block access

For each of the following statements, select Yes if the statement is true. Otherwise, select No.  
NOTE: Each correct selection is worth one point.

Statements	Yes	No
User1 can access Microsoft Exchange Online from Device2.	<input type="radio"/>	<input type="radio"/>
User2 can access Microsoft Exchange Online from Device1.	<input type="radio"/>	<input type="radio"/>
User2 can access Microsoft Exchange Online from Device2.	<input type="radio"/>	<input type="radio"/>

- A. Mastered
- B. Not Mastered

**Answer:** A

**Explanation:**  
A screenshot of a computer Description automatically generated with medium confidence

**NEW QUESTION 143**

- (Exam Topic 4)  
You have a Microsoft 365 subscription.  
You need to configure access to Microsoft Office 365 for unmanaged devices. The solution must meet the following requirements:

- > Allow only the Microsoft Intune Managed Browser to access Office 365 web interfaces.
- > Ensure that when users use the Intune Managed Browser to access Office 365 web interfaces, they can only copy data to applications that are managed by the company.

Which two settings should you configure from the Microsoft Intune blade? To answer, select the appropriate settings in the answer area.  
NOTE: Each correct selection is worth one point.



- A. Mastered
- B. Not Mastered

Answer: A

Explanation:

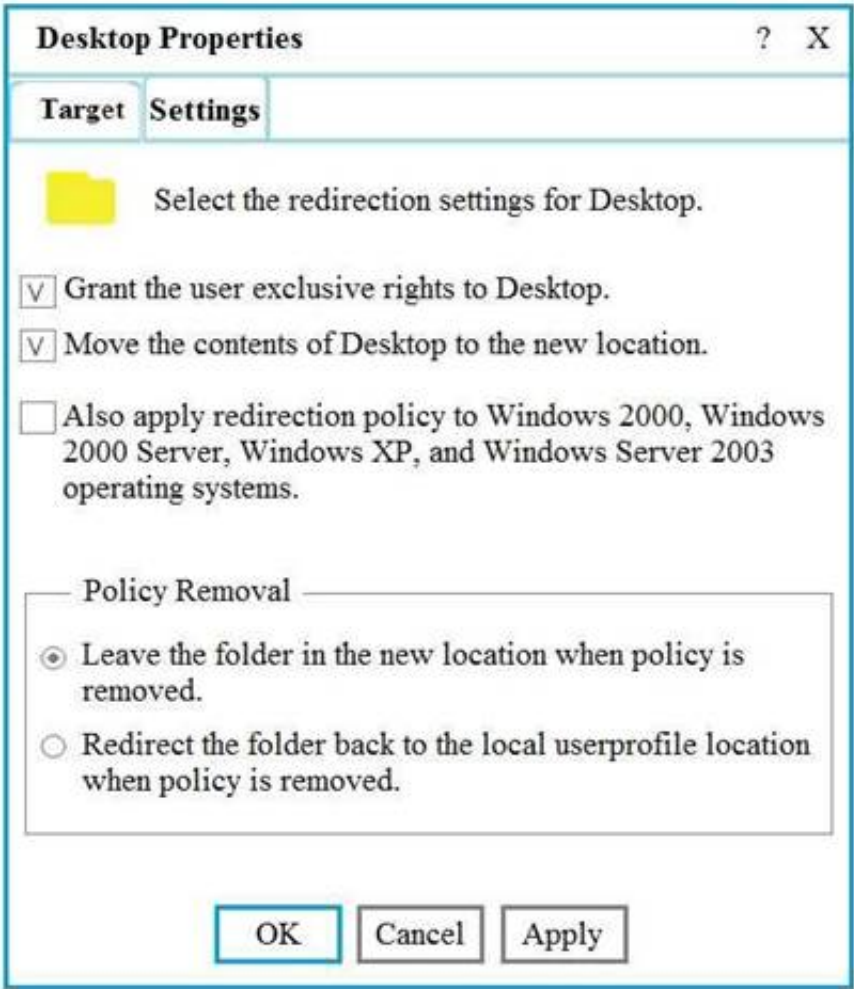
References:

<https://docs.microsoft.com/en-us/intune/app-configuration-managed-browser#application-protection-policies-for>

NEW QUESTION 147

- (Exam Topic 4)

Your network contains an Active Directory domain named contoso.com. The domain contains 200 computers that run Windows 10. Folder Redirection for the Desktop folder is configured as shown in the following exhibit.



The target is set to Server1.  
You plan to use known folder redirection in Microsoft OneDrive for Business.

You need to ensure that the desktop content of users remains on their desktop when you implement known folder redirection. Which two actions should you perform? Each correct answer presents part of the solution. NOTE: Each correct selection is worth one point.

- A. Clear the Grant the user exclusive rights to Desktop check box.
- B. Change the Policy Removal setting.
- C. Disable Folder Redirection.
- D. Clear the Move the contents of Desktop to the new location check box.

**Answer:** BC

**Explanation:**

The OneDrive Known Folder Move Group Policy objects won't work if you previously used Windows Folder Redirection Group Policy objects to redirect the Documents, Pictures, or Desktop folders to a location other than OneDrive. Remove the Windows Group Policy objects for these folders before you enable the OneDrive Group Policy objects. The OneDrive Group Policy objects won't affect the Music and Videos folders, so you can keep them redirected with the Windows Group Policy objects. For info about Windows Folder Redirection, see Deploy Folder Redirection with Offline Files."

**NEW QUESTION 150**

- (Exam Topic 4)

Note: This question is part of a series of questions that present the same scenario. Each question in the series contains a unique solution that might meet the stated goals. Some question sets might have more than one correct solution, while others might not have a correct solution.

After you answer a question in this section, you will NOT be able to return to it. As a result, these questions will not appear in the review screen.

Your network contains an Active Directory domain. The domain contains member computers that run Windows 8.1 and are enrolled in Microsoft Intune.

You need to identify which computers can be upgraded to Windows 10.

Solution: From the Microsoft Endpoint Manager admin center, you create a device compliance policy and assign the policy to the computers. After 24 hours, you view the Device compliance report in Intune.

Does this meet the goal?

- A. Yes
- B. No

**Answer:** B

**NEW QUESTION 155**

- (Exam Topic 4)

You have a Microsoft 365 subscription.

You have 20 computers that run Windows 10 and are joined to Microsoft Azure Active Directory (Azure AD)

You plan to replace the computers with new computers that run Windows 10. The new computers will be joined to Azure AD.

You need to ensure that the desktop background, the favorites, and the browsing history are available on the new computer.

What should you use?

- A. Roaming user profiles
- B. Folder Redirection
- C. The Microsoft SharePoint Migration Tool
- D. Enterprise State Roaming

**Answer:** D

**Explanation:**

Reference:

<https://docs.microsoft.com/en-us/azure/active-directory/devices/enterprise-state-roaming-faqs>

**NEW QUESTION 158**

- (Exam Topic 4)

Note: This question is part of a series of questions that present the same scenario. Each question in the series contains a unique solution that might meet the stated goals. Some question sets might have more than one correct solution, while others might not have a correct solution.

After you answer a question in this section, you will NOT be able to return to it. As a result, these questions will not appear in the review screen.

You have a computer that runs Windows 8.1.

Two days ago, you upgraded the computer to Windows 10. You need to downgrade the computer to Windows 8.1. Solution: From the Settings app, you use the Recovery options. Does this meet the goal?

- A. Yes
- B. No

**Answer:** A

**Explanation:**

Reference:

[https://answers.microsoft.com/en-us/windows/forum/windows\\_10-windows\\_install/how-to-recover-restore-your](https://answers.microsoft.com/en-us/windows/forum/windows_10-windows_install/how-to-recover-restore-your)

**NEW QUESTION 162**

- (Exam Topic 4)

You have a Microsoft 365 subscription.

You have 25 Microsoft Surface Hub devices that you plan to manage by using Microsoft Endpoint Manager. You need to configure the devices to meet the following requirements:

- Enable Windows Hello for Business.
- Configure Microsoft Defender SmartScreen to block users from running unverified files.

Which profile types should you configure? To answer, select the appropriate options in the answer area.

NOTE: Each correct selection is worth one point.



Windows Hello for Business:

Windows Defender SmartScreen:

- A. Mastered
- B. Not Mastered

**Answer:** A

**Explanation:**

Reference:

<https://docs.microsoft.com/en-us/mem/intune/protect/identity-protection-windows-settings?toc=/intune/configur> <https://docs.microsoft.com/en-us/mem/intune/protect/endpoint-protection-windows-10?toc=/intune/configuratio>

**NEW QUESTION 164**

- (Exam Topic 4)

You have an Azure Active Directory (Azure AD) tenant that contains a user named User1. User1 has the device shown in the following table.

Name	Operating system	Version	Join type	Mobile device management (MDM)
Device1	Windows	10.0.18362.0	Azure AD registered	None
Device2	Windows	10.0.18362.30	Azure AD registered	Microsoft Intune
Device3	Windows	10.0.18362.0	Azure AD joined	None
Device4	Windows	10.0.18362.30	Azure AD joined	Microsoft Intune

Enterprise State Roaming is configured for User1. User1 signs in to Device4 and changes the desktop. You need to identify on which devices User1 will have a changed desktop. Which devices should you identify?

- A. Device1, Device2, Device3, and Device4
- B. Device4 only
- C. Device2, Device3, and Device4 only
- D. Device2 and Device4 only
- E. Device3 and Device4 only

**Answer:** A

**Explanation:**

The requirements of Enterprise State Roaming are:

- > Windows 10, with the latest updates, and a minimum Version 1511 (OS Build 10586 or later) is installed on the device.
- > The device is Azure AD joined or hybrid Azure AD joined.
- > Ensure that Enterprise State Roaming is enabled for the tenant in Azure AD.
- > The user is assigned an Azure Active Directory Premium license.
- > The device must be restarted and the user must sign in again to access Enterprise State Roaming features.

Reference:

<https://docs.microsoft.com/en-us/azure/active-directory/devices/enterprise-state-roaming-troubleshooting>

**NEW QUESTION 166**

- (Exam Topic 4)

You have 100 computers that run Windows 8.1.

You plan to deploy Windows 10 to the computers by performing a wipe and load installation.

You need to recommend a method to retain the user settings and the user data.

Which three actions should you recommend be performed in sequence? To answer, move the appropriate actions from the list of actions to the answer area and arrange them in the correct order.

Actions

Configure known folder redirection in Microsoft OneDrive.

Create a system image backup.

Enable Enterprise State Roaming.

Deploy Windows 10.

Run loadstate.exe.

Run scanstate.exe.

Restore a system image backup

Answer Area

>

<

↑

↓

- A. Mastered
- B. Not Mastered

**Answer:** A

**Explanation:**

References:  
<https://docs.microsoft.com/en-us/windows/deployment/windows-10-deployment-scenarios> <http://itproguru.com/expert/2016/01/step-by-step-how-to-migrate-users-and-user-data-from-xp-vista-windows-7>

**NEW QUESTION 171**

- (Exam Topic 4)  
 You have devices enrolled in Microsoft Intune as shown in the following table.

Name	Platform	Member of
Device1	Windows 10	Group1, Group3
Device2	Android	Group2, Group3
Device3	Windows 10	Group3
Device4	Windows 10	Group2
Device5	Windows 10	Group1

You create an app protection policy named Policy1 that has the following settings:

- > Platform: Windows 10
- > Protected apps: App1
- > Exempt apps: App2
- > Network boundary: Cloud resources, IPv4 ranges

You assign Policy1 to Group1 and Group2. You exclude Group3 from Policy1.  
 Which devices will apply Policy1?

- A. Device1, Device2, Device4, and Device5
- B. Device1, Device4, and Device5 only
- C. Device4 and Device5 only
- D. Device1, Device3, Device4 and Device5

**Answer:** A

**Explanation:**

Policy1 is applied to all devices in Group1 and Group2. It is not applied to any devices in Group3, unless those devices are also members of Group1 or Group2.  
 Note: The phrase "You exclude Group3 from Policy1" is misleading. It means that Policy1 is not applied to Group3, rather than Group3 being blocked.

**NEW QUESTION 172**

- (Exam Topic 4)  
 You have 100 computers that run Windows 10. You have no servers. All the computers are joined to Microsoft Azure Active Directory (Azure AD). The computers have different update settings, and some computers are configured for manual updates. You need to configure Windows Update. The solution must meet the following requirements:

- > The configuration must be managed from a central location.
- > Internet traffic must be minimized.
- > Costs must be minimized.

How should you configure Windows Update? To answer, select the appropriate options in the answer area.  
 NOTE: Each correct selection is worth one point.

Windows Update technology to use:

Windows Server Update Services (WSUS)
Microsoft Endpoint Configuration Manager
Windows Update for Business

Manage the configuration by using:

A Group Policy object (GPO)
Microsoft Endpoint Configuration Manager
Microsoft Intune

Manage the traffic by using:

Delivery Optimization
BranchCache
Peer cache

- A. Mastered
- B. Not Mastered

Answer: A

Explanation:

Box 1: Windows Server Update Services (WSUS)  
 Windows Server Update Services (WSUS) enables information technology administrators to deploy the latest Microsoft product updates. You can use WSUS to fully manage the distribution of updates that are released through Microsoft Update to computers on your network. Windows Server Update Services is a built-in server role that includes the following enhancements: Can be added and removed by using the Server Manager Includes Windows PowerShell cmdlets to manage the most important administrative tasks in WSUS Etc.  
 Box 2: A Group Policy object  
 In an Active Directory environment, you can use Group Policy to define how computers and users can interact with Windows Update to obtain automatic updates from Windows Server Update Services (WSUS).  
 Box 3: BranchCache  
 BranchCache is a bandwidth-optimization feature that has been available since the Windows Server 2008 R2 and Windows 7 operating systems. Each client has a cache and acts as an alternate source for content that devices on its own network request. Windows Server Update Services (WSUS) and Microsoft Endpoint Manager can use BranchCache to optimize network bandwidth during update deployment, and it's easy to configure for either of them. BranchCache has two operating modes: Distributed Cache mode and Hosted Cache mode.  
 Reference: <https://docs.microsoft.com/en-us/windows/deployment/update/waas-branchcache> <https://docs.microsoft.com/en-us/windows-server/administration/windows-server-update-services/deploy/4-conf>

NEW QUESTION 174

- (Exam Topic 4)  
 You have a Microsoft 365 E5 subscription that contains 100 Windows 10 devices enrolled in Microsoft Intune. You plan to use Endpoint analytics. You need to create baseline metrics. What should you do first?

- A. Create an Azure Monitor workbook.
- B. Onboard 10 devices to Endpoint analytics.
- C. Create a Log Analytics workspace.
- D. Modify the Baseline regression threshold.

Answer: B

Explanation:

Onboarding from the Endpoint analytics portal is required for Intune managed devices. Reference: <https://docs.microsoft.com/en-us/mem/analytics/enroll-intune>

NEW QUESTION 179

- (Exam Topic 4)  
 You have a Microsoft 365 subscription. All computers are enrolled in Microsoft Intune. You have business requirements for securing your Windows 10 environment as shown in the following table.

Requirement	Detail
Requirement1	Ensure that Microsoft Exchange Online can be accessed from known locations only.
Requirement2	Lock a device that has a high Windows Defender Advanced Threat Protection (Windows Defender ATP) risk score.

What should you implement to meet each requirement? To answer, select the appropriate options in the answer area.  
 NOTE: Each correct selection is worth one point.



#### Requirement1

<input type="checkbox"/>
A conditional access policy
A device compliance policy
A device configuration profile

#### Requirement2

<input type="checkbox"/>
A conditional access policy
A device compliance policy
A device configuration profile

- A. Mastered  
 B. Not Mastered

**Answer:** A

#### Explanation:

Reference:

<https://github.com/MicrosoftDocs/IntuneDocs/blob/master/intune/advanced-threat-protection.md>

#### NEW QUESTION 184

- (Exam Topic 4)

You have a Microsoft 365 subscription.

A remote user purchases a laptop from a retail store. The laptop is intended for company use and has Windows 10 Pro edition installed.

You need to configure the laptop to meet the following requirements:

- > Modify the layout of the Start menu
- > Upgrade Windows 10 to Windows 10 Enterprise
- > Join the laptop to a Microsoft Azure Active Directory (Azure AD) domain named contoso.com

What should you do?

- A. Create a custom Windows image (.wim) file that contains an image of Windows 10 Enterprise and upload the file to a Microsoft  
 B. Create a provisioning package (.ppkg) file and email the file to the user  
 C. Create a Windows To Go workspace and ship the workspace to the user  
 D. Create a Sysprep Unattend (.xml) file and email the file to the user

**Answer:** B

#### Explanation:

Reference:

<https://docs.microsoft.com/en-us/windows/configuration/provisioning-packages/provisioning-packages>

#### NEW QUESTION 185

- (Exam Topic 4)

You have devices enrolled in Microsoft Intune as shown in the following table.

Name	Platform	Encryption	Secure Boot	Member of
Device1	Windows 10	Yes	No	Group1
Device2	Windows 10	No	Yes	Group2
Device3	Android	No	<i>Not applicable</i>	Group3

Intune includes the device compliance policies shown in the following table.

Name	Platform	Encryption	Secure Boot
Policy1	Windows 10	Not configured	Not configured
Policy2	Windows 10	Not configured	Required
Policy3	Windows 10	Required	Required
Policy4	Android	Not configured	<i>Not applicable</i>

The device compliance policies have the assignments shown in the following table.

Name	Assigned to
Policy1	Group1
Policy2	Group1, Group2
Policy3	Group3
Policy4	Group3

For each of the following statements, select Yes if the statement is true. Otherwise, select No.



NOTE: Each correct selection is worth one point.

Statements	Yes	No
Device1 is marked as compliant.	<input type="radio"/>	<input type="radio"/>
Device2 is marked as compliant.	<input type="radio"/>	<input type="radio"/>
Device3 is marked as compliant.	<input type="radio"/>	<input type="radio"/>

- A. Mastered
- B. Not Mastered

**Answer:** A

**Explanation:**

Box 1: No

Device1 is in Group1. Policy1 is assigned to Group1. Policy2 is also assigned to Group1. Device1 is compliant to Policy1, but not compliant to Policy2 (fails on Secure Boot).

By default, each device compliance policy includes the action to mark a device as noncompliant if it fails to meet a policy rule.

Box 2: Yes

Device2 is in Group2. Policy2 is assigned to Group2. Device2 is compliant to Policy2 (Secure boot met). Box 3: Yes

Device3 is in Group 3. Policy3 and Policy4 are assigned to Group3. Policy3 is for Windows 10 so it is disregarded. Device3 is compliant to Policy4.

Reference: <https://docs.microsoft.com/en-us/mem/intune/protect/device-compliance-get-started>

**NEW QUESTION 187**

- (Exam Topic 4)

You have a Microsoft 365 tenant

You have devices enrolled in Microsoft intune.

You assign a conditional access policy nan-ted Policy1 to a group named Group1. Policy1 restricts devices marked as noncompliant from accessing Microsoft OneDrive for Business.

You need to identify which noncompliant devices attempt to access OneDrive for Business. What should you do?

- A. From the Microsoft Endpoint Manager admin center, review the Setting compliance report.
- B. From the Microsoft Endpoint Manager admin center, review the Noncompliant devices reporter.
- C. From the Microsoft Endpoint Manager admin center, review Device compliance report.
- D. From the Azure Active Directory admin center, review the Conditional Access Insights and Reporting workbook.

**Answer:** B

**Explanation:**

The Noncompliant devices report provides data typically used by Helpdesk or admin roles to identify problems and help remediate issues. The data found in this report is timely, calls out unexpected behavior, and is meant to be actionable.

Note: Compliance reports help you understand when devices fail to meet your compliance configurations and can help you identify compliance-related issues in your organization.

Open the compliance dashboard

Open the Intune Device compliance dashboard:

> Sign in to the Microsoft Endpoint Manager admin center.

> Select Devices > Overview > Compliance status tab.

When the dashboard opens, you get an overview with all the compliance reports. In these reports, you can see and check for:

Overall device compliance Per-policy device compliance Per-setting device compliance Threat agent status

Device protection status View compliance reports

In addition to using the charts on Compliance status, you can go to Reports > Device compliance.

> Sign in to the Microsoft Endpoint Manager admin center.

> Select Devices > Monitor, and then from below Compliance select the report you want to view. Some of the available compliance reports include:

Device compliance Noncompliant devices

Devices without compliance policy Setting compliance

Policy compliance Noncompliant policies (preview)

Windows health attestation report Threat agent status

Reference: <https://docs.microsoft.com/en-us/mem/intune/protect/compliance-policy-monitor>

**NEW QUESTION 192**

- (Exam Topic 4)

You have a Microsoft Azure Active Directory (Azure AD) tenant. All corporate devices are enrolled in Microsoft Intune.

You have a web-based application named App1 that uses Azure AD to authenticate.

You need to prompt all users of App1 to agree to the protection of corporate data when they access App1 from both corporate and non-corporate devices.

What should you configure?

- A. Notifications in Device compliance
- B. Terms and Conditions in Device enrollment

- C. Terms of use in Conditional access
- D. an Endpoint protection profile in Device configuration

**Answer:** C

**Explanation:**

References:  
<https://docs.microsoft.com/en-us/azure/active-directory/conditional-access/terms-of-use>

#### NEW QUESTION 197

- (Exam Topic 4)

Your network contains an Active Directory domain. The domain contains 1,200 computers that run Windows 8.1.  
 You deploy an Upgrade Readiness solution in Microsoft Azure and configure the computers to report to Upgrade Readiness.  
 From Upgrade Readiness, you open a table view of the applications.  
 You need to filter the view to show only applications that can run successfully on Windows 10.  
 How should you configure the filter in Upgrade Readiness? To answer, select the appropriate options in the answer area.  
 NOTE: Each correct selection is worth one point.

Filter column:

Issue
UpgradeAssessment
UpgradeDecison

Filter value:

No known issues
Ready to upgrade
Supported version available

- A. Mastered
- B. Not Mastered

**Answer:** A

**Explanation:**

References:  
<https://docs.microsoft.com/en-us/windows/deployment/upgrade/upgrade-readiness-resolve-issues>

#### NEW QUESTION 199

- (Exam Topic 4)

Note: This question is part of a series of questions that present the same scenario. Each question in the series contains a unique solution that might meet the stated goals. Some question sets might have more than one correct solution, while others might not have a correct solution.  
 After you answer a question in this section, you will NOT be able to return to it. As a result, these questions will not appear in the review screen.  
 Your network contains an Active Directory domain. The domain contains member computers that run Windows 8.1 and are enrolled in Microsoft Intune.  
 You need to identify which computers can be upgraded to Windows 10.  
 Solution: From Windows on the Devices blade of the Microsoft Endpoint Manager admin center, you create a filter and export the results as a CSV file.  
 Does this meet the goal?

- A. Yes
- B. No

**Answer:** B

#### NEW QUESTION 201

- (Exam Topic 4)

You have a Microsoft 365 E5 subscription that contains 10 Android Enterprise devices. Each device has a corporate-owned work profile and is enrolled in Microsoft Intune.  
 You need to configure the devices to run a single app in kiosk mode.  
 Which Configuration settings should you modify in the device restrictions profile?

- A. General
- B. Users and Accounts
- C. System security
- D. Device experience

**Answer:** D

**Explanation:**

Device experience  
 Use these settings to configure a kiosk-style experience on your dedicated devices, or to customize the home screen experiences on your fully managed devices. You can configure devices to run one app, or run many apps. When a device is set with kiosk mode, only the apps you add are available.  
 Device experience, Enrollment profile type: Select an enrollment profile type to start configuring Microsoft Launcher or the Microsoft Managed Home Screen on your devices. Your options:

\* Dedicated device, Kiosk mode, Single App  
\* etc.  
Reference: <https://docs.microsoft.com/en-us/mem/intune/configuration/device-restrictions-android-for-work>

**NEW QUESTION 206**

- (Exam Topic 4)  
Your company has computers that run Windows 10. The company uses Microsoft Intune to manage the computers.  
You have an app protection policy for Microsoft Edge. You assign the policy to a group. On a computer named Computer1, you open Microsoft Edge.  
You need to verify whether Microsoft Edge on Computer1 is protected by the app protection policy. Which column should you add in Task Manager?

- A. Operating system context
- B. UAC virtualization
- C. Enterprise Context
- D. Data Execution Prevention

**Answer:** C

**Explanation:**  
Reference:  
<https://docs.microsoft.com/en-us/windows/security/information-protection/windows-information-protection/wip> <https://www.itpromentor.com/win10-mam-wip/>

**NEW QUESTION 210**

- (Exam Topic 4)  
You have 500 Windows 10 devices enrolled in Microsoft Intune.  
You plan to use Exploit protection in Microsoft Endpoint Manager to enable the following system settings on the devices:

- Data Execution Prevention (DEP)
- Force randomization for images (Mandatory ASLR)

You need to configure a Windows 10 device that will be used to create a template file.  
Which protection areas on the device should you configure in the Windows Security app before you create the template file? To answer, drag the appropriate protection areas to the correct settings. Each protection area may be used once, more than once, or not at all. You may need to drag the split bar between panes or scroll to view content.  
NOTE: Each correct selection is worth one point.

Protection areas

Account protection

App & browser control

Device security

Answer Area

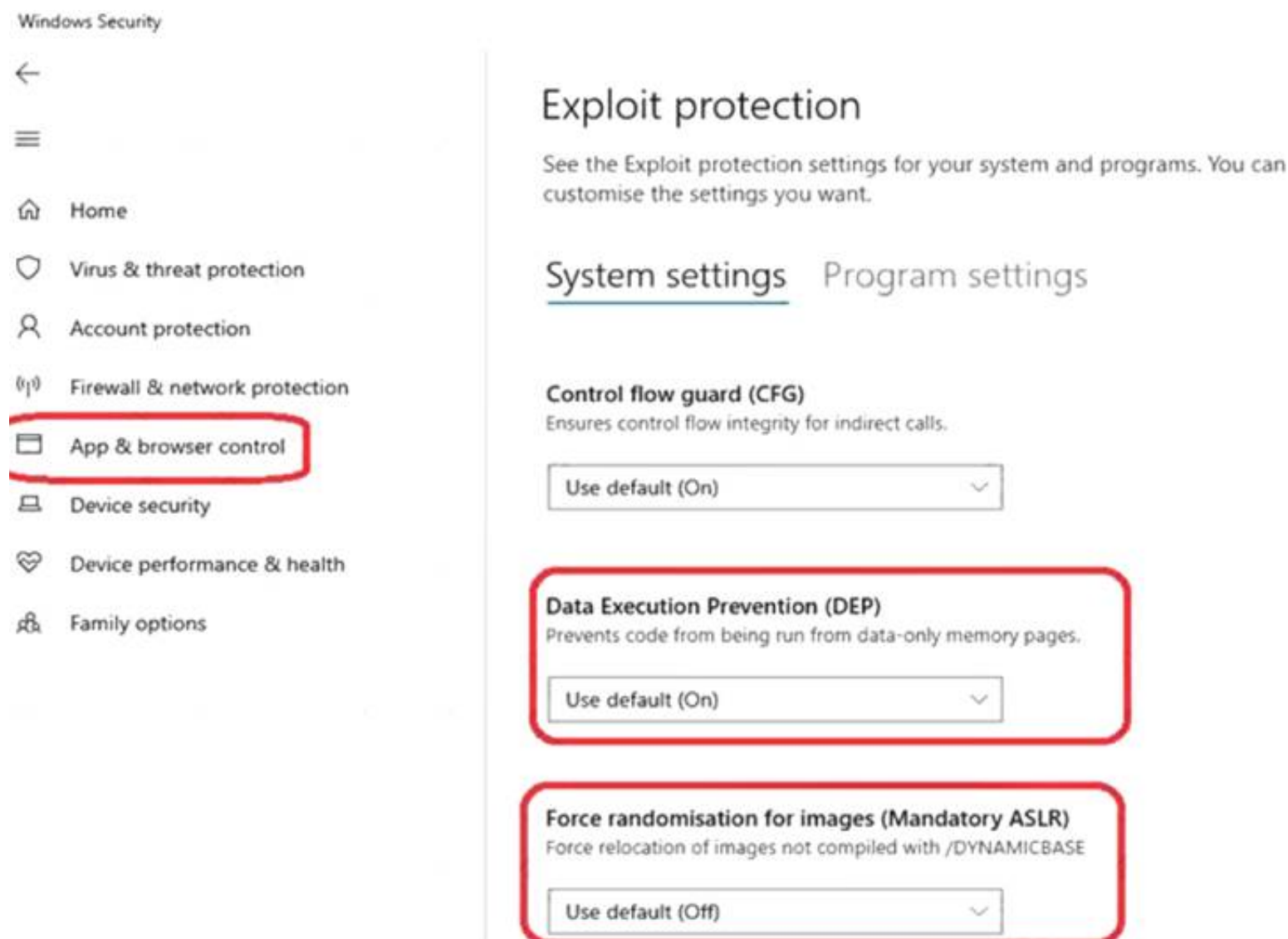
DEP:

Mandatory ASLR:

- A. Mastered
- B. Not Mastered

**Answer:** A

**Explanation:**  
Box 1: App & browser control  
Graphical user interface, text, application Description automatically generated



Note: Data Execution Prevention (DEP): This mitigation prevents code from being run from data-only memory pages.

Box 2: App & browser control

Force randomization for images (Mandatory ASLR). This mitigation forcibly relocates images not compiled with /DYNAMICBASE.

Reference:

<https://support.microsoft.com/en-us/windows/app-browser-control-in-windows-security-8f68fb65-ebb4-3cfb-4b>

#### NEW QUESTION 212

- (Exam Topic 4)

You have a Microsoft 365 tenant that contains the objects shown in the following table.

Name	Type
Admin1	User
Group1	Microsoft 365 group
Group2	Distribution group
Group3	Mail-enabled security group
Group4	Security group

You are creating a compliance policy named Compliance1.

Which objects can you specify in Compliance1 as additional recipients of noncompliance notifications?

- A. Group1, Group2, Group3, Group4, and Admin1
- B. Group1, Group2, Group3, and Group4 only
- C. Group3, Group4, and Admin1 only
- D. Group1, Group2, and Group3 only
- E. Group3 and Group4 only

**Answer: D**

**Explanation:**

Reference:

<https://www.ravenswoodtechnology.com/microsoft-intune-compliance-notifications/> <https://docs.microsoft.com/en-us/microsoft-365/admin/create-groups/compare-groups?view=o365-worldwide>

#### NEW QUESTION 214

- (Exam Topic 4)

You have a workgroup computer named Computer1 that runs Windows 10 and has the users shown in the following table.

Name	Member of
User1	Group1
User2	Group2
User3	Group3

Group1 is a member of Group3.

You are creating a file named Kiosk.xml that specifies a lockdown profile for a multi-app kiosk. Kiosk.xml contains the following section.



```
<Configs>
  <Config>
    <UserGroup Type="LocalGroup" Name="Group3" />
    <DefaultProfile Id="{9A2A490F-10F6-4764-974A-43B19E722C23}"/>
  </Config>
</Configs>
```

You apply Kiosk.xml to Computer1.  
For each of the following statements, select Yes if the statement is true. Otherwise, select No.  
NOTE: Each correct selection is worth one point.

Statements	Yes	No
The lockdown profile applies to User1.	<input type="radio"/>	<input type="radio"/>
The lockdown profile applies to User2.	<input type="radio"/>	<input type="radio"/>
The lockdown profile applies to User3.	<input type="radio"/>	<input type="radio"/>

- A. Mastered
- B. Not Mastered

Answer: A

Explanation:  
Reference:  
<https://docs.microsoft.com/en-us/windows/configuration/lock-down-windows-10-to-specific-apps#config-for-gr>

NEW QUESTION 215

- (Exam Topic 4)  
You have an Azure Active Directory group named Group1. Group1 contains two Windows 10 Enterprise devices named Device1 and Device2. You create a device configuration profile named Profile1. You assign Profile1 to Group1. You need to ensure that Profile1 applies to Device1 only. What should you modify in Policy1?

- A. Assignments
- B. Applicability Rules
- C. Settings
- D. Scope (Tags)

Answer: A

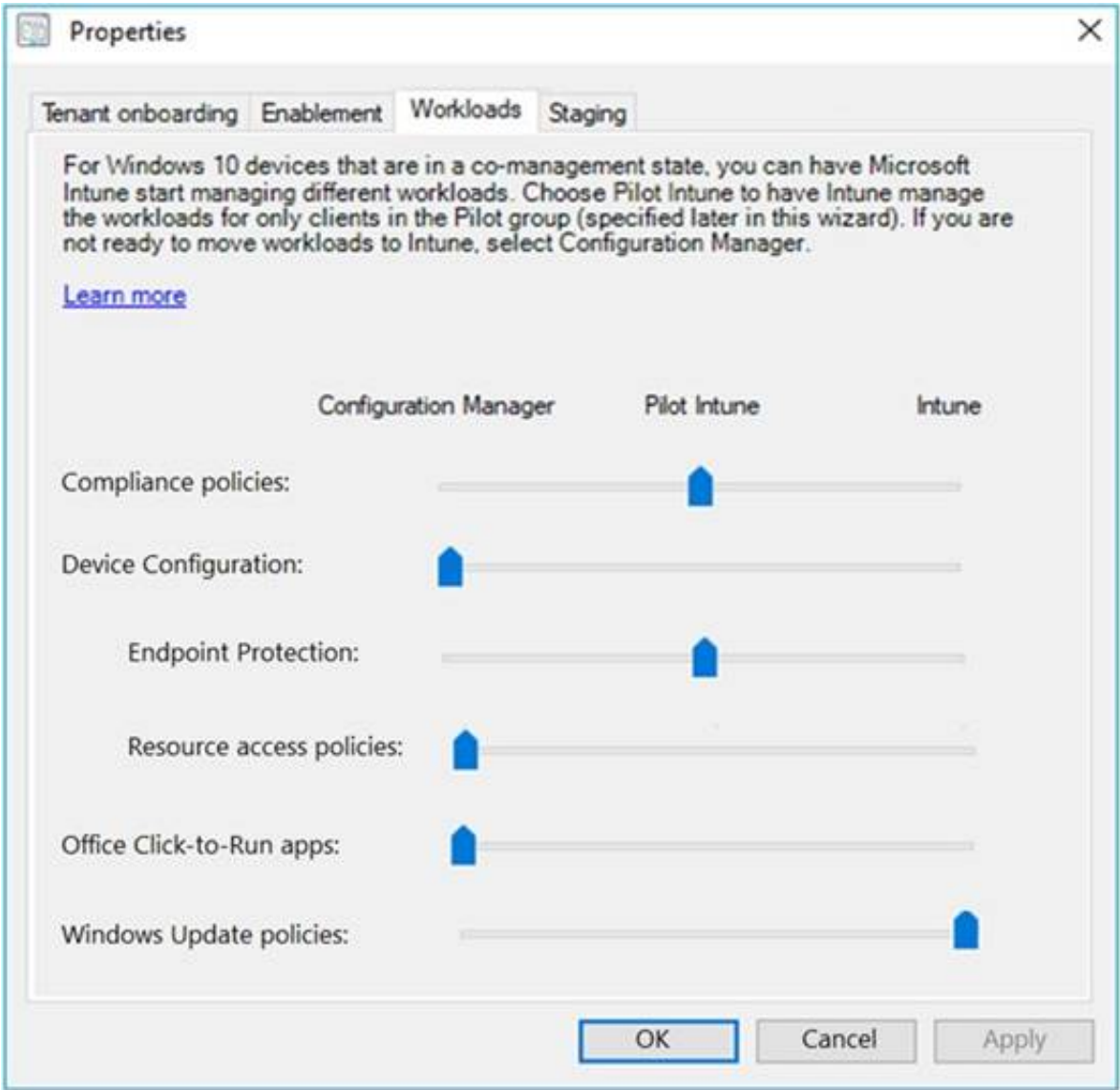
Explanation:  
Reference:  
<https://docs.microsoft.com/en-us/mem/intune/configuration/device-profile-assign>

NEW QUESTION 219

- (Exam Topic 4)  
Your network contains an Active Directory forest named contoso.com that is synced to Microsoft Azure Active Directory (Azure AD). You use Microsoft Endpoint Configuration Manager for device management. You have the Windows 10 devices shown in the following table.

Name	Collection
Device1	Collection1
Device2	Collection2

You configure Endpoint Configuration Manager co-management as follows:  
➤ Automatic enrollment in Intune: Pilot  
➤ Pilot collection for all workloads: Collection2  
You configure co-management workloads as shown in the following exhibit.



For each of the following statements, select Yes if the statement is true. Otherwise, select No.  
NOTE: Each correct selection is worth one point.

Statements	Yes	No
Microsoft Intune manages the compliance policies for Device1.	<input type="radio"/>	<input type="radio"/>
Configuration Manager manages the Windows Update policies for Device1.	<input type="radio"/>	<input type="radio"/>
Microsoft Intune manages Endpoint Protection for Device2.	<input type="radio"/>	<input type="radio"/>

- A. Mastered
- B. Not Mastered

Answer: A

Explanation:

Box 1: No  
The Pilot Group does not include Device1. Box 2: Yes  
Box 3: Yes  
The Pilot Group includes Device3. Reference:  
<https://docs.microsoft.com/en-us/mem/configmgr/comanage/how-to-enable>

NEW QUESTION 220

- (Exam Topic 4)  
Your network contains an Active Directory named contoso.com. The domain contains two computers named Computer1 and Computer2 that run Windows 10. Folder Redirection is configured for a domain user named User1. The AppData\Roaming folder and the Desktop folder are redirected to a network share. User1 signs in to Computer1 and performs the following tasks:

- > Configures screen saver to start after five minutes of inactivity
- > Modifies the default save location for Microsoft Word
- > Creates a file named File1.docx on the desktop
- > Modifies the desktop background

You need to identify what will be retained when User1 signs in to Computer2. What should you identify?

- A. File1.docx and the desktop background only
- B. File1.docx, the screen saver settings, the desktop background, and the default save location for Word
- C. File1.docx only
- D. File1.docx, the desktop background, and the default save location for Word only

Answer: B

Explanation:

Reference:  
<https://docs.microsoft.com/en-us/windows-server/storage/folder-redirection/folder-redirection-rup-overview>

**NEW QUESTION 225**

- (Exam Topic 4)

You are licensed for Microsoft Endpoint Manager.

You use Microsoft Endpoint Configuration Manager and Microsoft Intune.

You have devices enrolled in Configuration Manager as shown in the following table.

Name	Collection
Device1	Collection1
Device2	Collection2
Device3	Collection1, Collection2

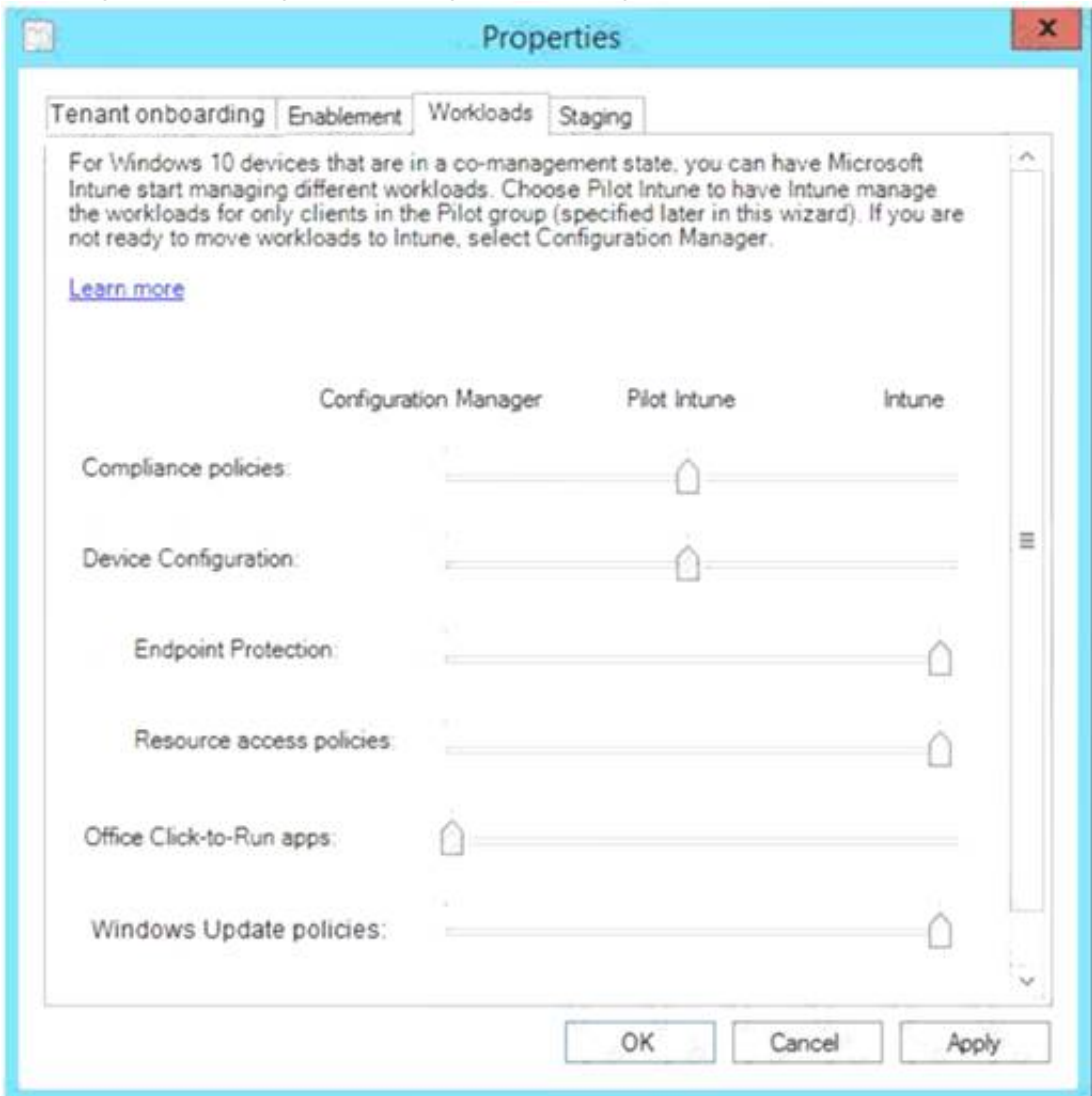
In Configuration Manager, you enable co-management and configure the following settings:

- > Automatic enrolment in Intune: Pilot
- > Intune Auto Enrollment: Collection1

In Configuration Manager, you configure co-management staging to have the following settings:

- > Compliance policies: Collection2
- > Device Configuration: Collection1

In Configuration Manager, you configure co-management workloads as shown in the following exhibit.



For each of the following statements, select Yes if the statement is true. Otherwise, select No.

Statements	Yes	No
You can use the Microsoft Endpoint Manager admin center to monitor the compliance status of Device1.	<input type="radio"/>	<input type="radio"/>
You can use the Microsoft Endpoint Manager admin center to monitor the compliance status of Device2.	<input type="radio"/>	<input type="radio"/>
You can use the Microsoft Endpoint Manager admin center to monitor the compliance status of Device3.	<input type="radio"/>	<input type="radio"/>

- A. Mastered  
B. Not Mastered

**Answer:** A

**Explanation:**

Reference:

<https://docs.microsoft.com/en-us/mem/configmgr/comanage/workloads>

**NEW QUESTION 230**

- (Exam Topic 4)  
You have unrooted devices enrolled in Microsoft Intune as shown in the following table.

Name	Platform	IP address
Device1	Windows	192.168.10.35
Device2	Android	10.10.10.40
Device3	Android	192.168.10.10

The devices are members of a group named Group1.  
In Intune, you create a device compliance location that has the following configurations:

- > Name: Network1
- > IPv4 range: 192.168.0.0/16

In Intune, you create a device compliance policy for the Android platform. The policy has following configurations:

- > Name: Policy1
- > Device health: Rooted devices: Block
- > Locations: Location: Network1
- > Mark device noncompliant: Immediately
- > Assigned: Group1

In Intune device compliance policy has the following configurations:

- > Mark devices with no compliance policy assigned as: Compliant
- > Enhanced jailbreak detection: Enabled
- > Compliance status validity period (days): 20

For each of the following statements, select Yes if the statement is true. Otherwise, select No.  
NOTE: Each correct selection is worth one point.

Statements	Yes	No
Device1 is marked as compliant.	<input type="radio"/>	<input type="radio"/>
Device2 is marked as compliant.	<input type="radio"/>	<input type="radio"/>
Device3 is marked as compliant.	<input type="radio"/>	<input type="radio"/>

- A. Mastered
- B. Not Mastered

**Answer:** A

**Explanation:**

Reference:  
<https://docs.microsoft.com/en-us/intune/device-compliance-get-started>

**NEW QUESTION 234**

- (Exam Topic 4)  
You use Windows Admin Center to remotely administer computers that run Windows 10.  
When connecting to Windows Admin Center, you receive the message shown in the following exhibit.



You need to prevent the message from appearing when you connect to Windows Admin Center. To which certificate store should you import the certificate?



- A. Personal
- B. Trusted Root Certification Authorities
- C. Client Authentication Issuers

**Answer:** A

**Explanation:**

Reference:  
<https://social.technet.microsoft.com/Forums/en-US/6b3abb8e-007e-4047-bd30-2946b9c3aaba/windows-admin-c>

**NEW QUESTION 237**

- (Exam Topic 4)

Note: This question is part of a series of questions that present the same scenario. Each question in the series contains a unique solution that might meet the stated goals. Some question sets might have more than one correct solution, while others might not have a correct solution.

After you answer a question in this section, you will NOT be able to return to it. As a result, these questions will not appear in the review screen.

Your company has an Azure Active Directory (Azure AD) tenant named contoso.com that contains several Windows 10 devices.

When you join new Windows 10 devices to contoso.com, users are prompted to set up a four-digit pin. You need to ensure that the users are prompted to set up a six-digit pin when they join the Windows 10 devices to contoso.com.

Solution: From the Azure Active Directory admin center, you configure the Authentication methods. Does this meet the goal?

- A. Yes
- B. No

**Answer:** B

**Explanation:**

Instead, from the Azure Active Directory admin center, you configure automatic mobile device management (MDM) enrollment. From the Device Management admin center, you configure the Windows Hello for Business enrollment options.

References:  
<https://docs.microsoft.com/en-us/intune/protect/windows-hello>

**NEW QUESTION 238**

- (Exam Topic 4)

You have a Microsoft 365 tenant that contains the Windows 10 devices shown in the following table.

Name	Used by	Azure Active Directory (Azure AD) join type	Managed by using Microsoft Intune
Device1	User1	Joined	Yes
Device2	User1	Registered	Yes
Device3	User1	Joined	No

You enable Enterprise State Roaming

You need to ensure that User1 can sync Windows settings across the devices. What should you do?

- A. Join Device2 to Azure AD.
- B. Add a Microsoft account to each device.
- C. Remove Device1 and Device2 from Intune.
- D. Enroll Device3 in intune.

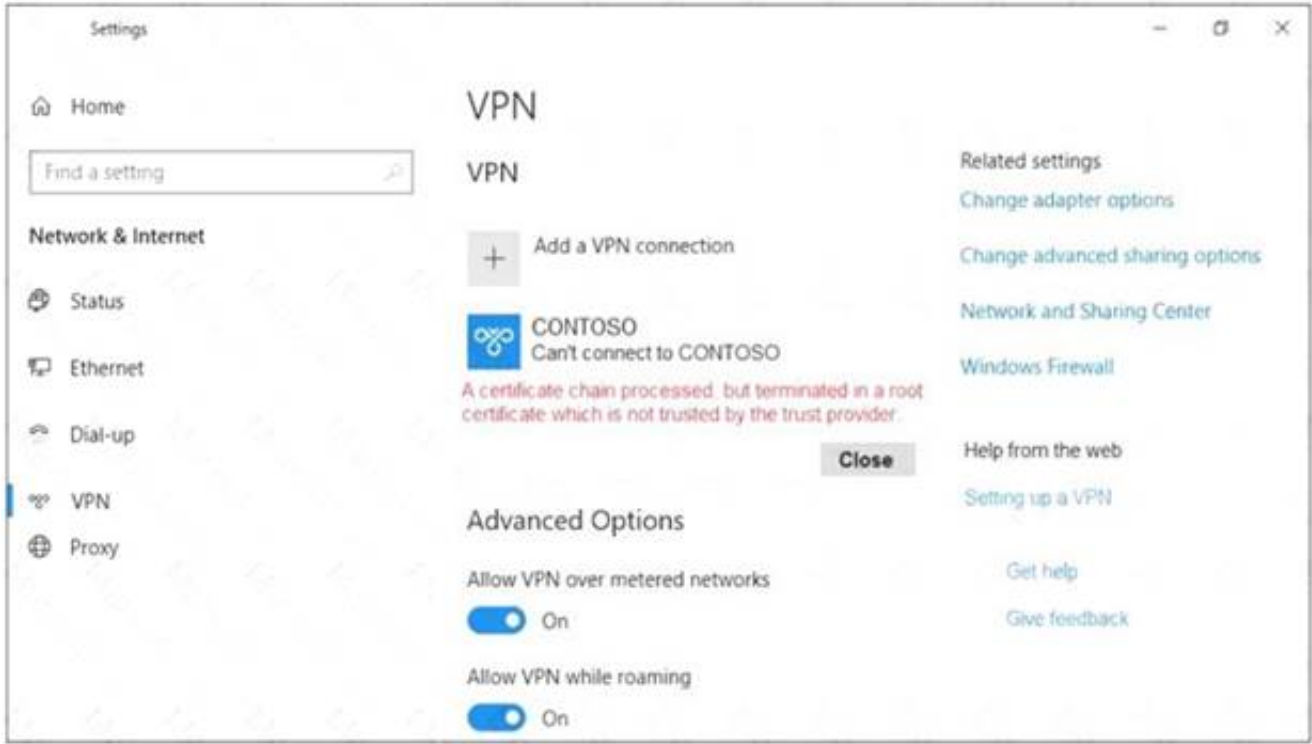
**Answer:** D

**NEW QUESTION 241**

- (Exam Topic 4)

You are configuring an SSTP VPN.

When you attempt to connect to the VPN, you receive the message shown in the exhibit. (Click the Exhibit tab.)



What should you do to ensure that you can connect to the VPN?

- A. Change the VPN type
- B. Generate a computer certificate from the root certification authority (CA)
- C. Install the root certificate

**Answer:** B

#### NEW QUESTION 242

- (Exam Topic 4)

You have a Microsoft 365 subscription that contains 1,000 Android devices enrolled in Microsoft Intune. You create an app configuration policy that contains the following settings:

- Device enrollment type: Managed devices
- Profile Type: All Profile Types
- Platform: Android Enterprise

Which two types of apps can be associated with the policy? Each correct answer presents a complete solution. NOTE: Each correct selection is worth one point.

- A. Android Enterprise system app
- B. Android store app
- C. Web link
- D. Managed Google Play store app
- E. Built-in Android app

**Answer:** AD

#### NEW QUESTION 244

- (Exam Topic 4)

You have computers that run Windows 8.1 or Windows 10. All the computers are enrolled in Microsoft Intune, Endpoint Configuration Manager, and Desktop Analytics. Co-management is enabled for your environment.

You plan to upgrade the Windows 8.1 computers to Windows 10.

You need to identify which Windows 8.1 computers do NOT have supported Windows 10 drivers.

What should you use?

- A. the General Hardware Inventory report in Configuration Manager
- B. the List of devices in a specific device category report in Configuration Manager
- C. Deployment plans in Desktop Analytics
- D. the Device compliance report in Intune

**Answer:** C

#### Explanation:

Reference:

<https://docs.microsoft.com/en-us/mem/configmgr/desktop-analytics/about-deployment-plans>

#### NEW QUESTION 245

- (Exam Topic 4)

You have 100 Windows 10 devices enrolled in Microsoft Intune.

You need to configure the devices to retrieve Windows updates from the internet and from other computers on a local network.

Which Delivery Optimization setting should you configure, and which type of Intune object should you create? To answer, select the appropriate options in the answer area.

NOTE: Each correct selection is worth one point.

Delivery Optimization setting:

	▼
Bandwidth optimization type	
Download mode	
VPN peer caching	

Intune object:

	▼
A configuration profile	
App configuration policies	
Windows 10 quality updates	
Windows 10 update rings	

- A. Mastered
- B. Not Mastered

**Answer:** A

#### Explanation:

Graphical user interface, text, application, chat or text message Description automatically generated

Box 1: Download mode

Download mode specifies the download method that Delivery Optimization uses to download content.

Box 2: A configuration profile

Delivery Optimization settings are configured as part of the device configuration profile. Reference:

<https://docs.microsoft.com/en-us/mem/intune/configuration/delivery-optimization-settings> <https://docs.microsoft.com/en-us/mem/intune/configuration/delivery-optimization-windows>

### NEW QUESTION 250

- (Exam Topic 4)

You have a Microsoft 365 subscription.

You are assigned the User administrator role.

An Azure AD security group named Group1 was deleted five days ago. You need to restore Group1.

What should you do?

- A. Modify the group expiration policy.
- B. From Deleted groups, restore Group1.
- C. Manually recreate Group1.
- D. Ask a global administrator to restore Group1.

**Answer: B**

### NEW QUESTION 255

- (Exam Topic 4)

Your company has a computer named Computer1 that runs Windows 10 Pro.

The company develops a proprietary Universal Windows Platform (UWP) app named App1. App1 is signed with a certificate from a trusted certification authority (CA).

You need to sideload App1 to Computer1.

What should you do? To answer, select the appropriate options in the answer area. NOTE: Each correct selection is worth one point.

To enable sideloading:

<input type="checkbox"/>	Configure the Apps & features settings in the Settings app
<input type="checkbox"/>	Configure the For developers settings in the Settings app
<input type="checkbox"/>	Run the Enable-WindowsOptionalFeature cmdlet
<input type="checkbox"/>	Run the Set-WindowsEdition cmdlet

To sideload App1:

<input type="checkbox"/>	Double-click App1.appx in File Explorer
<input type="checkbox"/>	Use the Add a package option in the Settings app
<input type="checkbox"/>	Run the Install-Package cmdlet
<input type="checkbox"/>	Run the Add-AppxPackage cmdlet

- A. Mastered
- B. Not Mastered

**Answer: A**

#### Explanation:

Reference:

<https://www.windowscentral.com/how-enable-windows-10-sideload-apps-outside-store> <https://docs.microsoft.com/en-us/windows/application-management/sideload-apps-in-windows-10>

### NEW QUESTION 256

- (Exam Topic 4)

Your company uses Windows Defender Advanced Threat Protection (Windows Defender ATP). Windows Defender ATP includes the machine groups shown in the following table.

Rank	Name	Members
1	Group1	Tag Equals demo And OS In Windows 10
2	Group2	Tag Equals demo
3	Group3	Domain Equals adatum.com
4	Group4	Domain Equals adatum.com And OS In Windows 10
5	Group5	Name starts with COMP
Last	Ungrouped machines (default)	Not applicable

You onboard a computer to Windows Defender ATP as shown in the following exhibit.



What is the effect of the Windows Defender ATP configuration? To answer, select the appropriate options in the answer area.

NOTE: Each correct selection is worth one point.



Computer1 will be a member of:

Group3 only

Group4 only

Grou5 only

Group3, Group4, and Group5 only

If you add the tag demo to Computer1, Computer1 will be a member of:

Group1 only

Group2 only

Group1 and Group2 only

Group1, Group2, Group3, Group4, and Group5

- A. Mastered
- B. Not Mastered

Answer: A

Explanation:

Computer1 will be a member of:

Group3 only

Group4 only

Grou5 only

Group3, Group4, and Group5 only

If you add the tag demo to Computer1, Computer1 will be a member of:

Group1 only

Group2 only

Group1 and Group2 only

Group1, Group2, Group3, Group4, and Group5

NEW QUESTION 261

- (Exam Topic 4)  
You have a Microsoft 365 tenant named contoso.com that contains a group named ContosoUsers. All the users in contoso.com are members of ContosoUsers. You have two Windows 10 devices as shown in the following table.

Name	Join type	Mobile device management (MDM)
Computer1	Azure Active Directory (Azure AD) - registered	Microsoft Intune
Computer2	Azure Active Directory (Azure AD) – joined	Microsoft Intune

Both Computer1 and Computer2 contain two apps named App1 and App2. You configure an app protection policy named AppPolicy1 that has the following settings:

- > Protected apps: App1
- > Assignments: ContosoUsers
- > Enrollment state: Without enrollment
- > Windows Information Protection mode: Block

For each of the following statements, select Yes if the statement is true. Otherwise, select No.  
NOTE: Each correct selection is worth one point.

Statements	Yes	No
On Computer1, a user can copy and paste data from App1 to App2.	<input type="radio"/>	<input type="radio"/>
On Computer2, a user can copy and paste data from App1 to App2.	<input type="radio"/>	<input type="radio"/>
Data created by App1 can be wiped selectively from Computer1.	<input type="radio"/>	<input type="radio"/>

- A. Mastered
- B. Not Mastered

Answer: A

Explanation:  
Graphical user interface, text, application Description automatically generated



Reference:  
<https://docs.microsoft.com/en-us/mem/intune/apps/windows-information-protection-policy-create> <https://docs.microsoft.com/en-us/mem/intune/apps/apps-selective-wipe>

**NEW QUESTION 263**

- (Exam Topic 4)  
 You have five computers that runs Windows 10.  
 You need to create a provisioning package to configure the computers to meet the following requirements: ➤ Run an interactive app.  
 ➤ Automatically sign in by using a local user account.  
 ➤ Prevent users from accessing the desktop and running other applications.  
 Which four actions should you perform in sequence? To answer, move the appropriate actions from the list of actions to the answer area and arrange them in the correct order.

**Actions**

Apply the provisioning package.

Run the Provision desktop devices project.

Copy the provisioning package to each computer.

Run the Provision kiosk devices project.

Install the Microsoft Deployment Toolkit (MDT).

Enable Microsoft User Experience Virtualization (UE-V).

Install the Windows Configuration Designer.

➤

➤

**Answer Area**

➤

➤

- A. Mastered
- B. Not Mastered

**Answer:** A

**Explanation:**  
 Reference:  
<https://docs.microsoft.com/en-us/windows/configuration/provisioning-packages/provisioning-install-icd>

**NEW QUESTION 267**

- (Exam Topic 4)  
 You have a Microsoft 365 subscription. The subscription contains 500 computers that run Windows 11 and are enrolled in Microsoft Endpoint Manager. You need to manage the deployment of monthly security updates. The solution must meet the following requirements:  
 • Updates must be deployed to a group of test computers for quality assurance.  
 • Updates must be deployed automatically 15 days after the quality assurance testing. What should you create in the Microsoft Endpoint Manager admin center?  
 A. an update ring  
 B. a security baseline  
 C. a feature update policy  
 D. a device configuration profile

**Answer:** A

**NEW QUESTION 272**

- (Exam Topic 4)  
 You have the on-premises servers shown in the following table.

Name	Description
DC1	Domain controller that runs Windows Server 2022
Server1	Standalone server that runs Windows Server 2022
Server2	Member server that runs Windows Server 2022 and has the Remote Access role installed
Server3	Member server that runs Windows Server 2019
Server4	Red Hat Enterprise Linux (RHEL) 8.4 server

You have a Microsoft 365 E5 subscription that contains Android and iOS devices. All the devices are managed by using Microsoft Intune. You need to implement Microsoft Tunnel for Intune. The solution must minimize the number of open firewall ports.  
 To which server can you deploy a Tunnel Gateway server, and which inbound ports should be allowed on the server to support Microsoft Tunnel connections? To answer, select the appropriate options in the answer area.  
 NOTE: Each correct selection is worth one point.

Server:

Ports:

- A. Mastered
- B. Not Mastered

**Answer:** A

**Explanation:**

Box 1: Server4

Microsoft Tunnel is a VPN gateway solution for Microsoft Intune that runs in a container on Linux and allows access to on-premises resources from iOS/iPadOS and Android Enterprise devices using modern authentication and Conditional Access.

Box 2: TCP 443 and UDP 443 only

Some traffic goes to your public facing IP address for the Tunnel. The VPN channel will use TCP, TLS, UDP, and DTLS over port 443.

By default, port 443 is used for both TCP and UDP, but this can be customized via the Intune Saerver Configuration – Server port setting. If changing the default port (443) ensure your inbound firewall rules are adjusted to the custom port.

Incorrect:

TCP 1723 is not used.

Reference: <https://docs.microsoft.com/en-us/mem/intune/protect/microsoft-tunnel-overview>

**NEW QUESTION 275**

- (Exam Topic 4)

Note: This question is part of a series of questions that present the same scenario. Each question in the series contains a unique solution that might meet the stated goals. Some question sets might have more than one correct solution, while others might not have a correct solution.

After you answer a question in this section, you will NOT be able to return to it. As a result, these questions will not appear in the review screen.

Your network contains an Active Directory domain. The domain contains member computers that run Windows 8.1 and are enrolled in Microsoft Intune.

You need to identify which computers can be upgraded to Windows 10.

Solution: You install the Microsoft Assessment and Planning Toolkit. From the Microsoft Assessment and Planning Toolkit, you collect inventory data and run the Windows 10 Readiness scenario.

Does this meet the goal?

- A. Yes
- B. No

**Answer:** A

**NEW QUESTION 277**

- (Exam Topic 4)

You have a Microsoft Intune subscription.

You are creating a Windows Autopilot deployment profile named Profile1 as shown in the following exhibit.

### Create profile

Windows PC

1 Basics 2 Out-of-box experience (OOBE) 3 Scope tags 4 Assignments 5 Review + create

Configure the out-of-box experience for your Autopilot devices

\* Deployment mode ? User-Driven

\* Join to Azure AD as ? Azure AD joined

Microsoft Software License Terms ? Show Hide

**Important information about hiding license terms**

Privacy settings ? Show Hide

**The default value for diagnostic data collection has changed for devices running Windows 10, version 1903 and later. [Learn more](#)**

Hide change account options ? Show Hide

User account type ? Administrator Standard

Allow White Glove OOBE ? No Yes

Apply device name template ? No Yes

Use the drop-down menus to select the answer choice that completes each statement based on the information presented in the graphic.  
 NOTE: Each correct selection is worth one point.

Users who deploy a device by using Profile1  
 [answer choice].

▼

are prevented from modifying any desktop settings

can create additional local users on the device

can modify the desktop settings for all device users

can modify the desktop settings only for themselves

Users can configure the [answer choice] during  
 the deployment.

▼

computer name

Cortana settings

keyboard layout

- A. Mastered
- B. Not Mastered

**Answer: A**

**Explanation:**

Reference:

<https://docs.microsoft.com/en-us/windows/deployment/windows-autopilot/user-driven#:~:text=Windows%20Au> <https://docs.microsoft.com/en-us/windows/deployment/windows-autopilot/white-glove>

**NEW QUESTION 280**

- (Exam Topic 4)

You have an Azure Active Directory (Azure AD) tenant named contoso.com. You have a workgroup computer named Computer1 that runs Windows 10. You need to add Computer1 to contoso.com.

What should you use?

- A. the Settings app
- B. Computer Management
- C. netdom.exe
- D. dsregcmd.exe

**Answer: D**

**Explanation:**

If you want to manually join the computer to Azure AD, you can execute the dsregcmd /join command. This command should be run in SYSTEM context (using psexec for example) and will force an attempt to Azure AD.

Reference: <https://365bythijs.be/2019/11/02/troubleshooting-hybrid-azure-ad-join/>

#### NEW QUESTION 284

- (Exam Topic 4)

You have following types of devices enrolled in Microsoft Intune:

- Windows 10
- Android
- iOS

For which types of devices can you create VPN profiles in Microsoft Endpoint Manager?

- A. Windows 10 and Android only
- B. Windows 10, Android, and iOS
- C. Windows 10 only
- D. Windows 10 and iOS only
- E. Android and iOS only

**Answer:** B

#### Explanation:

Reference:

<https://docs.microsoft.com/en-us/mem/intune/configuration/vpn-settings-android>

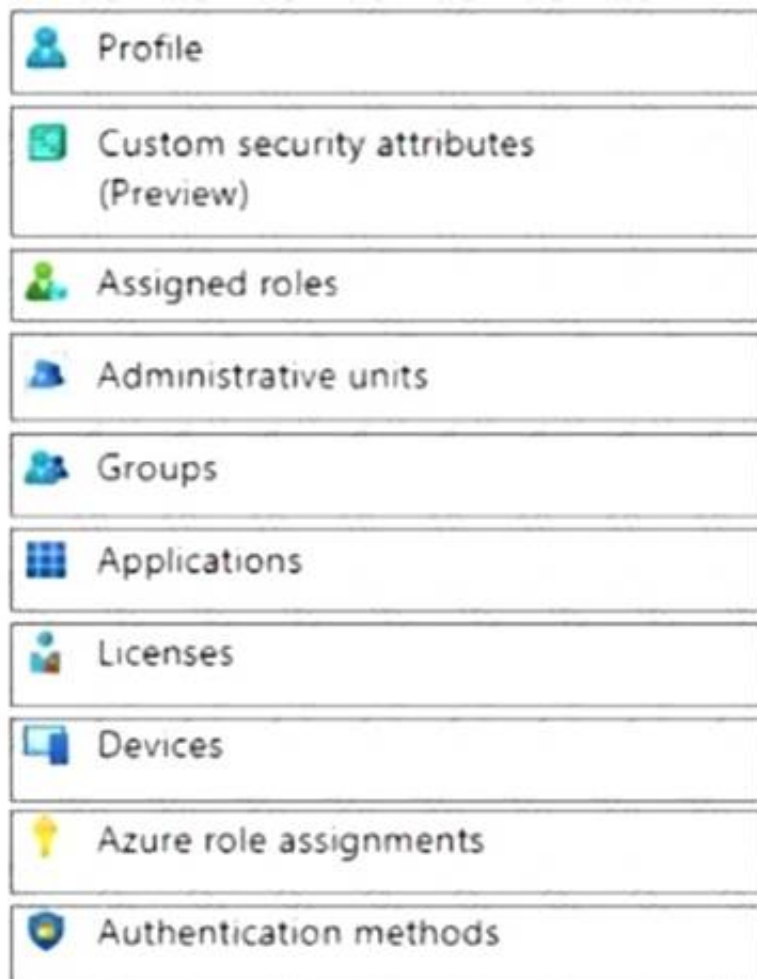
#### NEW QUESTION 289

- (Exam Topic 4)

You have a Microsoft 365 E5 subscription that contains a user named User1. You need to perform the following tasks for User1:

- Set the Usage location to Canada.
- Configure the Phone and Email authentication contact info for self-service password reset (SSPR). Which two settings should you configure in the Azure Active Directory admin center? To answer, select the appropriate settings in the answer area.

NOTE: Each correct selection is worth one point.



- A. Mastered
- B. Not Mastered

**Answer:** A

#### Explanation:

Graphical user interface, application Description automatically generated

#### NEW QUESTION 291

- (Exam Topic 4)

You have a Microsoft 365 subscription that uses Microsoft Intune and contains 100 Windows 10 devices. You need to create Intune configuration profiles to perform the following actions on the devices:

- Deploy a custom Start layout.
- Rename the local Administrator account.

Which profile template should you use for each action? To answer, select the appropriate options in the answer area.

NOTE: Each correct selection is worth one point.



Deploy a custom Start layout:

Delivery optimization
Device restriction
Endpoint protection
Identity protection

Rename the local Administrator account:

Delivery optimization
Device restriction
Endpoint protection
Identity protection

- A. Mastered  
B. Not Mastered

**Answer:** A

**Explanation:**

Box 1: Device restriction

Customize Start Menu Custom & Taskbar

Here is a quick step-by-step guide to help you to deploy the prepared XML file. This Intune policy helps to customize the start menu and taskbar for Windows 10 devices.

Logon to Microsoft Endpoint Manager Portal.

Navigate to Devices -> Windows -> Configuration Profiles. Select Platform -> Windows 10 and later.

Select Profile Type -> Template.

Search with "device" and select Device Restrictions. Click on Create button.

Box 2: Identity protection

Use an Identity protection profile to manage Windows Hello for Business on groups of devices in Microsoft Intune. Windows Hello for Business is a method for signing in to Windows devices by replacing passwords, smart cards, and virtual smart cards. Intune includes built-in settings so Administrators can configure and use Windows Hello for Business.

Reference:

<https://www.anoopcnaire.com/start-menu-taskbar-custom-layout-intune-cloudpc/> <https://docs.microsoft.com/en-us/mem/intune/protect/identity-protection-configure>

**NEW QUESTION 296**

- (Exam Topic 4)

Your company has a Microsoft Azure Active Directory (Azure AD) tenant and computers that run Windows 10.

The company uses Microsoft Intune to manage the computers. The Azure AD tenant has the users shown in the following table.

Name	Member of
User1	Group1
User2	Group1, Group2
User3	None

The device type restrictions in Intune are configured as shown in the following table:

Priority	Name	Allowed platform	Assigned to
1	Policy1	Android, iOS, Windows (MDM)	None
2	Policy2	Windows (MDM)	Group2
3	Policy3	Android, iOS	Group1
Default	All users	Android, Windows (MDM)	All users

User3 is a device enrollment manager (DEM) in Intune.

For each of the following statements, select Yes if the statement is true. Otherwise, select No.

NOTE: Each correct selection is worth one point.

**Statements**

**Yes**

**No**

User1 can enroll a Windows device in Intune.

☐☐

User2 can enroll a Windows device in Intune.

☐☐

User3 can enroll an iOS device in Intune.

☐☐

- A. Mastered  
B. Not Mastered

**Answer:** A

**Explanation:**

No, Yes, No

Policy 1 - Priority 1 (Andriod, IOS, Windows) Applied to None Policy 2 - Priority 2 (Windows) Applied to Group 2 Policy 3 - Priority 3 (Android) Applied to Group 1  
User 1 is in G1, so they cannot enroll Windows devices. User 2 is in both G1 & G2, G2 has P2 with a Pri.2 which means, even though they are in G1, G1 has a pri.3, so P3 will not apply User 3 Is not a member of any group so the Default will apply. Policy 1 is assigned to NONE, default is assigned to All users, therefore they can NOT enroll iOS as default is only Android & Win.

References:

<https://docs.microsoft.com/en-us/intune-user-help/enroll-your-device-in-intune-android>

#### NEW QUESTION 301

- (Exam Topic 4)

You have a Microsoft Intune subscription.

You have devices enrolled in Intune as shown in the following table.

Name	Operating system
Device1	Android 8.1.0
Device2	Android 9
Device3	iOS 11.4.1
Device4	iOS 12.3.1
Device5	iOS 12.3.2

An app named App1 is installed on each device.

What is the minimum number of app configuration policies required to manage App1?

- A. 1
- B. 2
- C. 3
- D. 4
- E. 5

**Answer:** B

**Explanation:**

Reference:

<https://docs.microsoft.com/en-us/mem/intune/apps/app-configuration-policies-overview>

#### NEW QUESTION 305

- (Exam Topic 4)

You have a Microsoft 365 subscription that uses Microsoft Intune.

You need to ensure that you can deploy apps to Android Enterprise devices. What should you do first?

- A. Create a configuration profile.
- B. Link your managed Google Play account to intune.
- C. Configure the Partner device management settings.
- D. Add a certificate connector.

**Answer:** B

**Explanation:**

Connect your Intune account to your Managed Google Play account.

Managed Google Play is Google's enterprise app store and sole source of applications for Android Enterprise in Intune. You can use Intune to orchestrate app deployment through Managed Google Play for any Android Enterprise scenario (including personally-owned work profile, dedicated, fully managed, and corporate-owned work profile enrollments).

Reference: <https://docs.microsoft.com/en-us/mem/intune/apps/apps-add-android-for-work> <https://docs.microsoft.com/en-us/mem/intune/enrollment/connect-intune-android-enterprise>

#### NEW QUESTION 308

- (Exam Topic 4)

Your company has an infrastructure that has the following:

- A Microsoft 365 tenant
- An Active Directory forest
- Microsoft Store for Business
- A Key Management Service (KMS) server
- A Windows Deployment Services (WDS) server
- A Microsoft Azure Active Directory (Azure AD) Premium tenant

The company purchases 100 new computers that run Windows 10.

You need to ensure that the new computers are joined automatically to Azure AD by using Windows AutoPilot.

What should you use? To answer, select the appropriate options in the answer area. NOTE: Each correct selection is worth one point.

Management tool:

Azure Active Directory admin center
Microsoft Store for Business
Volume Activation Management Tool console
Windows Deployment Services console

Required information from each computer:

Device serial number and hardware hash
MAC address and computer name
Volume License Key and computer name

- A. Mastered
- B. Not Mastered

Answer: A

Explanation:

Reference:  
<https://docs.microsoft.com/en-us/intune/enrollment-autopilot>

NEW QUESTION 309

- (Exam Topic 4)  
You have a Microsoft 365 tenant.  
You have a Windows 10 update ring named Policy1 as shown in the following exhibit.

Basics

Name	Policy1
Description	--

Update ring settings

Update settings

Servicing channel	Semi-Annual Channel
Microsoft product updates	Allow
Windows drivers	Block
Quality update deferral period (days)	0
Feature update deferral period (days)	0
Set feature update uninstall period (2–60 days)	14

A Windows 10 Feature update deployment named Policy2 is configured as shown in the following exhibit.

Deployment settings

Name	Policy2
Description	--
Feature deployment settings	
Name	Windows 10 2004

You have devices enrolled in Microsoft Intune as shown in the following table.

Name	Windows 10 edition	Policy applied
Device1	Windows 10 Enterprise, version 20H2	Policy1
Device2	Windows 10 Pro, version 2004	Policy2
Device3	Windows 10 Enterprise, version 20H2	Policy2

For each of the following statements, select Yes if the statement is true. Otherwise, select No.  
NOTE: Each correct selection is worth one point.



Statements	Yes	No
Device1 will install feature updates twice a year.	<input type="radio"/>	<input type="radio"/>
Device2 will install feature update 20H2.	<input type="radio"/>	<input type="radio"/>
Device3 will be downgraded to feature update 2004.	<input type="radio"/>	<input type="radio"/>

- A. Mastered  
B. Not Mastered

Answer: A

Explanation:

Text Description automatically generated

Reference:

<https://docs.microsoft.com/en-us/mem/intune/protect/windows-10-update-rings>

NEW QUESTION 311

- (Exam Topic 4)

Your network contains an on-premises Active Directory domain named contoso.com that syncs to Azure Active Directory (Azure AD).

A user named User1 uses the domain-joined devices shown in the following table.

Name	Operating system
Device1	Windows 8.1 Pro
Device2	Windows 10 Pro

In the Azure Active Directory admin center, you assign a Windows 10 Enterprise E5 license to User1. You need to identify what will occur when User1 next signs in to the devices.

What should you identify for each device? To answer, select the appropriate options in the answer area.

NOTE: Each correct selection is worth one point.

Device1:

▼

Will activate as Windows 10 Enterprise

Will not upgrade to Windows 10 Enterprise

Will perform a clean installation of Windows 10 Enterprise

Will perform an in-place upgrade to Windows 10 Enterprise

Device2:

▼

Will activate as Windows 10 Enterprise

Will not upgrade to Windows 10 Enterprise

Will perform a clean installation of Windows 10 Enterprise

Will perform an in-place upgrade to Windows 10 Enterprise

- A. Mastered  
B. Not Mastered

Answer: A

Explanation:

Table Description automatically generated

Reference:

<https://docs.microsoft.com/en-us/windows/deployment/windows-10-subscription-activation>

NEW QUESTION 314

- (Exam Topic 4)

You have an Azure Active Directory (Azure AD) tenant named adatum.com that contains two computers named Computer1 and Computer2. The computers run Windows 10 and are members of a group named GroupA.

The tenant contains a user named User1 that is a member of a group named Group 1.

You need to ensure that if User1 changes the desktop background on Computer1, the new desktop background will appear when User1 signs in to Computer2.

What should you do?

- A. Create a device configuration profile for Windows 10 and configure the Shared multi-user device setting  
B. Assign the profile to GroupA.  
C. From the Azure Active Directory admin center, enable Enterprise State Roaming for Group1.  
D. From the Azure Active Directory admin center, enable Enterprise State Roaming for GroupA.  
E. Create a device configuration profile for Windows 10 and configure the Shared multi-user device setting  
F. Assign the profile to Group 1.

Answer: D



#### NEW QUESTION 319

- (Exam Topic 4)

Note: This question is part of a series of questions that present the same scenario. Each question in the series contains a unique solution that might meet the stated goals. Some question sets might have more than one correct solution, while others might not have a correct solution.

After you answer a question in this section, you will NOT be able to return to it. As a result, these questions will not appear in the review screen.

Your network contains an Active Directory domain. The domain contains a computer named Computer1 that runs Windows 8.1.

Computer1 has apps that are compatible with Windows 10.

You need to perform a Windows 10 in-place upgrade on Computer1.

Solution: You copy the Windows 10 installation media to a network share. From Windows 8.1 on Computer1, you run setup.exe from the network share.

Does this meet the goal?

A. Yes

B. No

**Answer: B**

#### Explanation:

Instead: You add Windows 10 startup and install images to a Windows Deployment Services (WDS) server. You start Computer1 by using WDS and PXE, and then you initiate the Windows 10 installation.

Reference: <https://docs.microsoft.com/en-us/windows/deployment/windows-deployment-scenarios-and-tools>

#### NEW QUESTION 324

- (Exam Topic 4)

You have a Microsoft 365 E5 subscription and 25 Apple iPads.

You need to enroll the iPads in Microsoft Intune by using the Apple Configurator enrollment method. What should you do first?

A. Upload a file that has the device identifiers for each iPad.

B. Modify the enrollment restrictions.

C. Configure an Apple MDM push certificate.

D. Add your user account as a device enrollment manager (DEM).

**Answer: C**

#### Explanation:

An Apple MDM Push certificate is required for Intune to manage iOS/iPadOS and macOS devices. After you add the certificate to Intune, your users can enroll their devices.

Reference:

<https://docs.microsoft.com/en-us/mem/intune/enrollment/apple-mdm-push-certificate-get>

#### NEW QUESTION 326

- (Exam Topic 4)

You use Microsoft Intune and Intune Data Warehouse.

You need to create a device inventory report that includes the data stored in the data warehouse. What should you use to create the report?

A. the Azure portal app

B. Endpoint analytics

C. the Company Portal app

D. Microsoft Power BI

**Answer: D**

#### Explanation:

You can use the Power BI Compliance app to load interactive, dynamically generated reports for your Intune tenant. Additionally, you can load your tenant data in Power BI using the OData link. Intune provides connection settings to your tenant so that you can view the following sample reports and charts related to:

Devices Enrollment

App protection policy Compliance policy

Device configuration profiles Software updates

Device inventory logs

Note: Load the data in Power BI using the OData link

With a client authenticated to Azure AD, the OData URL connects to the RESTful endpoint in the Data Warehouse API that exposes the data model to your reporting client. Follow these instructions to use Power BI Desktop to connect and create your own reports.

> Sign in to the Microsoft Endpoint Manager admin center.

> Select Reports > Intune Data warehouse > Data warehouse.

> Retrieve the custom feed URL from the reporting blade, for example:

> Open Power BI Desktop.

> Choose File > Get Data. Select OData feed.

> Choose Basic.

> Type or paste the OData URL into the URL box.

> Select OK.

> If you have not authenticated to Azure AD for your tenant from the Power BI desktop client, type your credentials. To gain access to your data, you must authorize with Azure Active Directory (Azure AD) using OAuth 2.0.

> Select Organizational account.

> Type your username and password.

> Select Sign In.

> Select Connect.

> Select Load.

Reference: <https://docs.microsoft.com/en-us/mem/intune/developer/reports-proc-get-a-link-powerbi>

**NEW QUESTION 331**

.....

## Thank You for Trying Our Product

### We offer two products:

1st - We have Practice Tests Software with Actual Exam Questions

2nd - Questions and Answers in PDF Format

### MD-101 Practice Exam Features:

- \* MD-101 Questions and Answers Updated Frequently
- \* MD-101 Practice Questions Verified by Expert Senior Certified Staff
- \* MD-101 Most Realistic Questions that Guarantee you a Pass on Your First Try
- \* MD-101 Practice Test Questions in Multiple Choice Formats and Updates for 1 Year

**100% Actual & Verified — Instant Download, Please Click**  
**[Order The MD-101 Practice Test Here](#)**