

Microsoft

Exam Questions AZ-801

Configuring Windows Server Hybrid Advanced Services



NEW QUESTION 1

DRAG DROP

You are planning the implementation of Cluster2 to support the on-premises migration plan.

You need to ensure that the disks on Cluster2 meet the security requirements.

In which order should you perform the actions? To answer, move all actions from the list of actions to the answer area and arrange them in the correct order.

Select and Place:

Actions	Answer Area
Add a disk resource to the cluster.	
Enable BitLocker on the volume.	
Update the BitLockerProtectorInfo property of the volume.	
Create a Cluster Shared Volume (CSV).	
Put the disk in maintenance mode.	

- A. Mastered
- B. Not Mastered

Answer: A

Explanation:

Reference: <https://docs.microsoft.com/en-us/windows-server/failover-clustering/bitlocker-on-csv-in-ws-2022>

NEW QUESTION 2

You are remediating the firewall security risks to meet the security requirements.

What should you configure to reduce the risks?

- A. a Group Policy Object (GPO)
- B. adaptive network hardening in Microsoft Defender for Cloud
- C. a network security group (NSG) in Sub1
- D. an Azure Firewall policy

Answer: A

Explanation:

Firewall rules configured in a Group Policy Object cannot be modified by local server administrators.

Reference: <https://docs.microsoft.com/en-us/windows/security/threat-protection/windows-firewall/create-an-inbound-port-rule>

NEW QUESTION 3

HOTSPOT

You need to configure BitLocker on Server4.

On which volumes can you turn on BitLocker, and on which volumes can you turn on auto-unlock? To answer, select the appropriate options in the answer area.

NOTE: Each correct selection is worth one point.

Hot Area:

Answer Area

BitLocker:

D only

C and D only

D, E, and F only

C, D, E, and F

Auto-unlock:

D only

C and D only

D, E, and F only

C, D, E, and F

- A. Mastered
- B. Not Mastered

Answer: A

Explanation:

Reference: <https://docs.microsoft.com/en-us/windows-server/storage/refs/refs-overview>
<https://docs.microsoft.com/enus/powershell/module/bitlocker/enable-bitlockerautounlock?view=windowsserver2022-ps>

NEW QUESTION 4

HOTSPOT

What is the effective minimum password length for User1 and Admin1? To answer, select the appropriate options in the answer area.

NOTE: Each correct selection is worth one point.

Hot Area:

Answer Area

User1:	<div><div></div><div>8</div><div>9</div><div>10</div><div>11</div><div>12</div></div>
Admin1:	<div><div></div><div>8</div><div>9</div><div>10</div><div>11</div><div>12</div></div>

- A. Mastered
- B. Not Mastered

Answer: A

Explanation:

Box 1: 9
When multiple PSOs apply to a user, the PSO with the highest precedence (lowest precedence number) applies which in this case is PSO1.
Box 2: 8
There are no PSOs applied to Admin1 so the password policy from the Default Domain GPO applies.
The Minimum password length setting in GPO1 would only apply to local user accounts on computers in OU1. It does not apply to domain user accounts.

NEW QUESTION 5

DRAG DROP

You need to meet the technical requirements for Cluster2.

Which four actions should you perform in sequence before you can enable replication? To answer, move the appropriate actions from the list of actions to the answer area and arrange them in the correct order.

Select and Place:

Actions	Answer Area
Create an Azure Recovery Services vault.	
Install Azure Connected Machine agents.	
Install and register Azure Site Recovery Providers.	
Create and associate replication policies.	
Create a Hyper-V site.	

- A. Mastered
- B. Not Mastered

Answer: A

Explanation:

Reference:
<https://docs.microsoft.com/en-us/azure/site-recovery/hyper-v-azure-tutorial>

NEW QUESTION 6

You are planning the data share migration to support the on-premises migration plan.

What should you use to perform the migration?

- A. Storage Migration Service
- B. Microsoft File Server Migration Toolkit
- C. File Server Resource Manager (FSRM)
- D. Windows Server Migration Tools

Answer: A

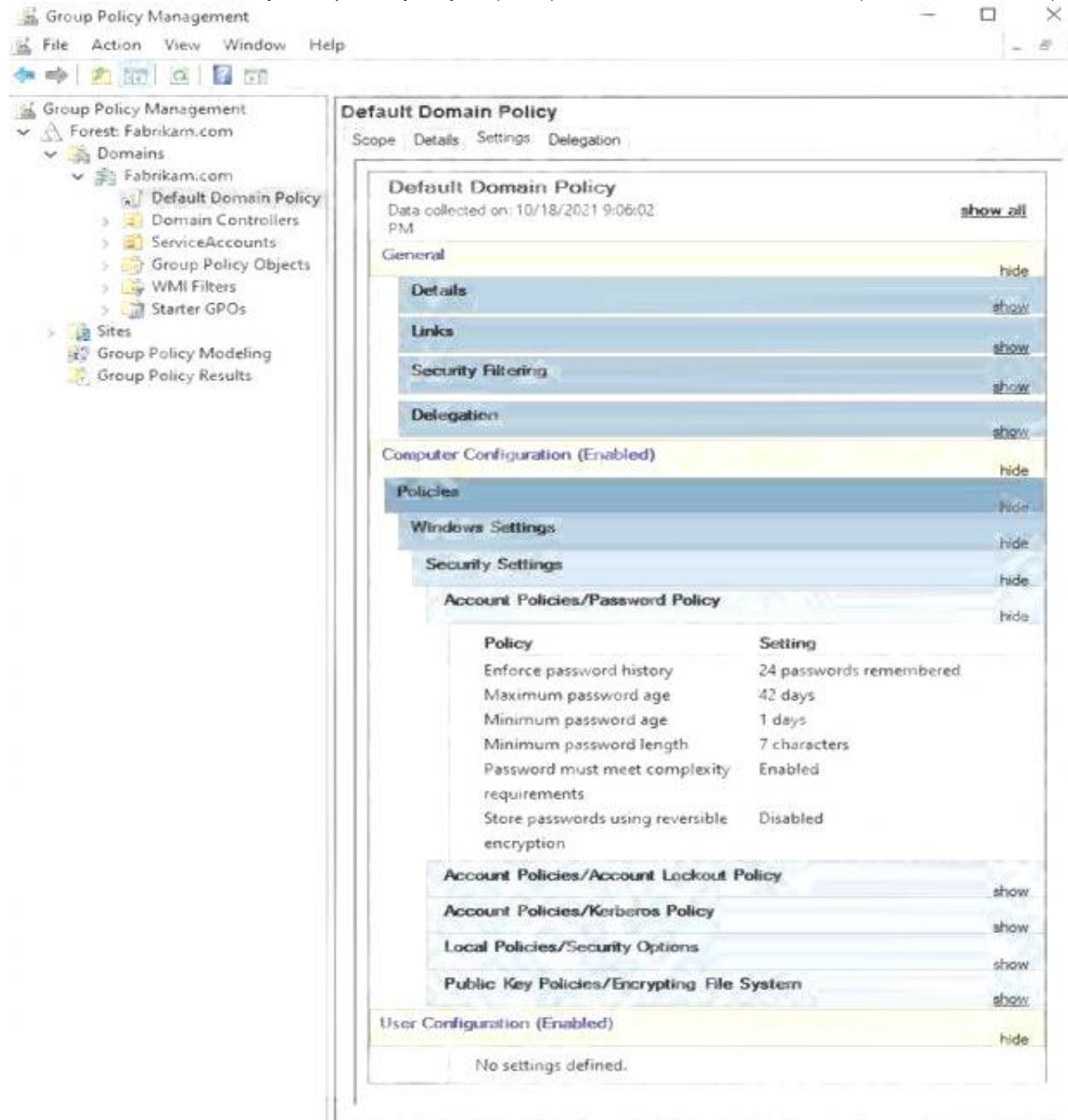
Explanation:

Reference: <https://docs.microsoft.com/en-us/windows-server/storage/storage-migration-service/migrate-data>

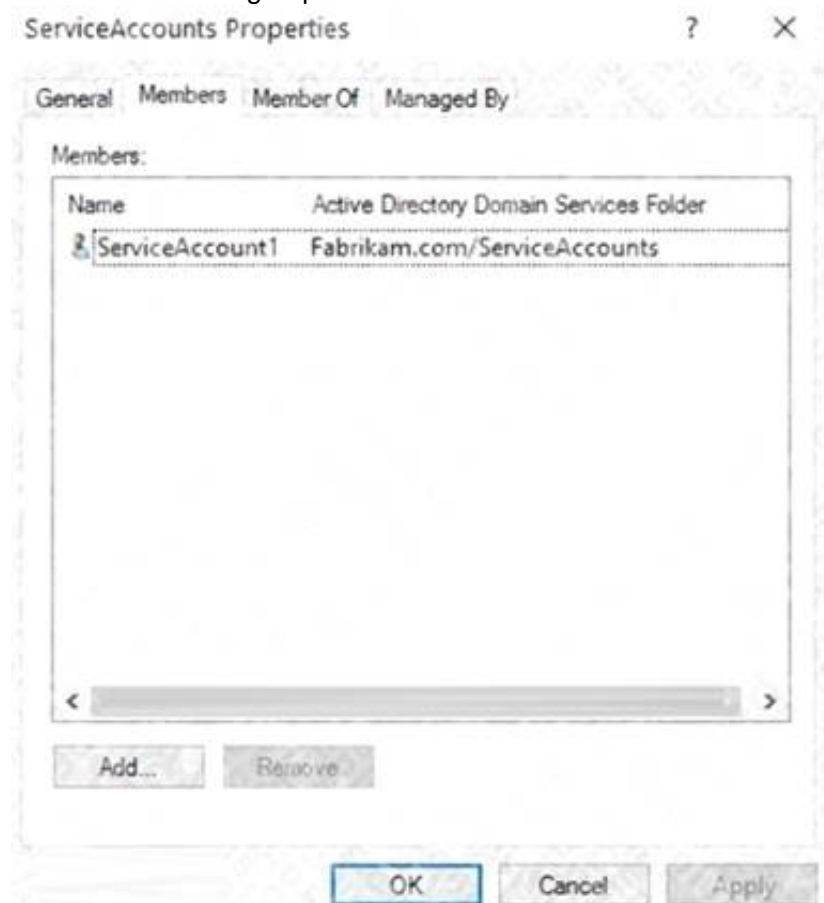
NEW QUESTION 7

HOTSPOT

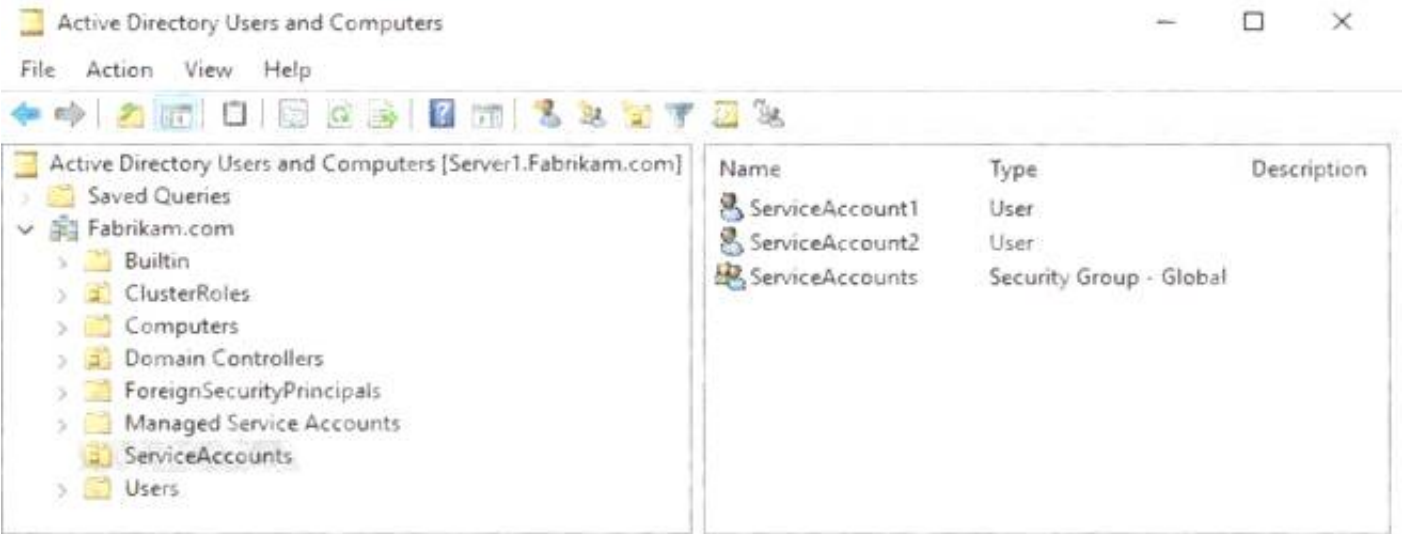
The Default Domain Policy Group Policy Object (GPO) is shown in the GPO exhibit. (Click the GPO tab.)



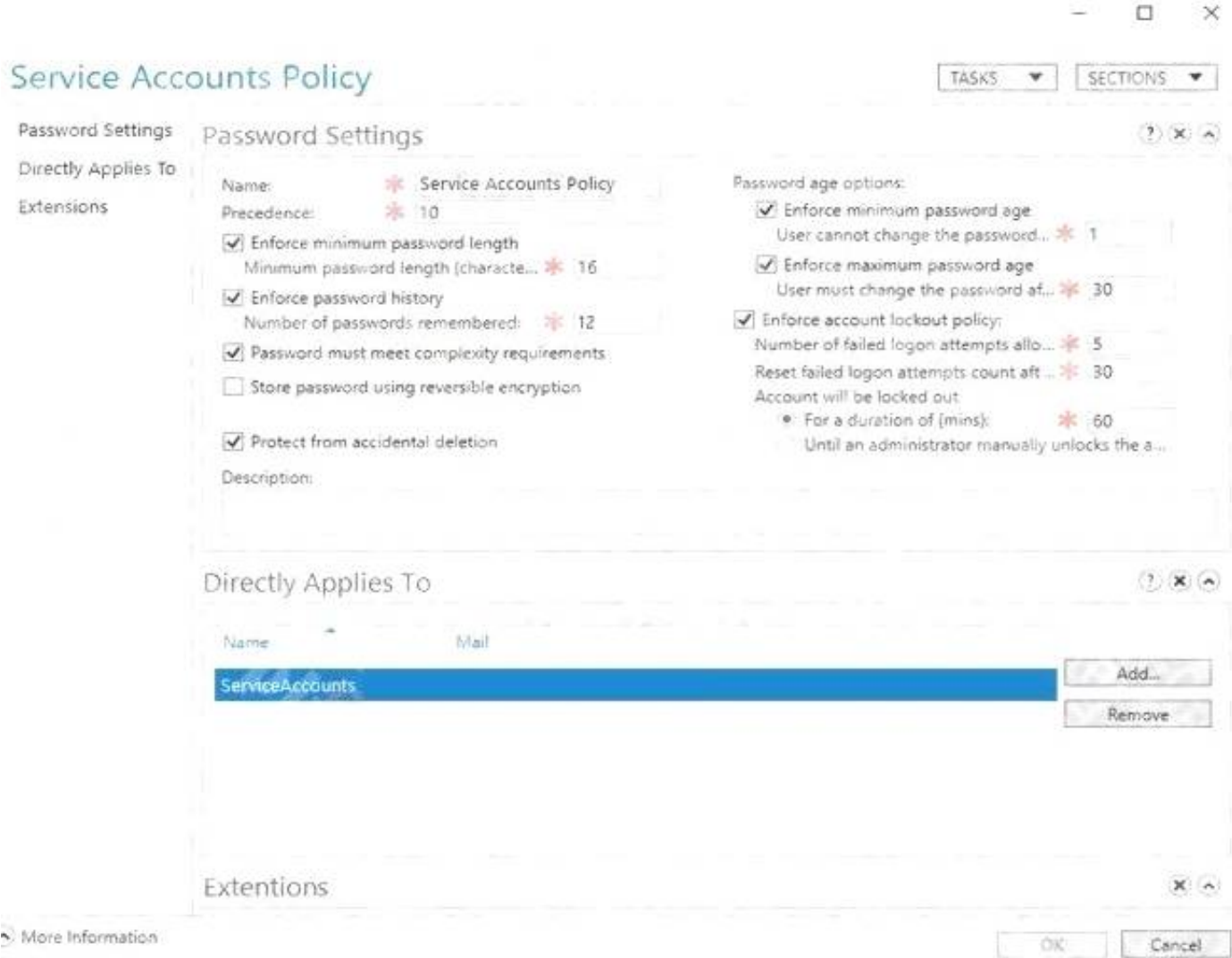
The members of a group named Service Accounts are shown in the Group exhibit. (Click the Group tab.)



An organizational unit (OU) named ServiceAccounts is shown in the OU exhibit. (Click the OU tab.)



You create a Password Settings Object (PSO) as shown in the PSO exhibit. (Click the PSO tab.)



For each of the following statements, select Yes if the statement is true. Otherwise, select No.
NOTE: Each correct selection is worth one point.

Hot Area:

Answer Area

Statements	Yes	No
The password of ServiceAccount1 must be at least 16 characters long.	<input type="radio"/>	<input type="radio"/>
The password of ServiceAccount2 must be at least 16 characters long.	<input type="radio"/>	<input type="radio"/>
Accounts that have the Service Accounts Policy applied can change their password to P@\$w0rd1.	<input type="radio"/>	<input type="radio"/>

- A. Mastered
- B. Not Mastered

Answer: A

Explanation:

Reference: https://docs.microsoft.com/en-us/windows-server/identity/ad-ds/get-started/adac/introduction-to-active-directoryadministrativecenterenhancements--level-100-#fine_grained_pswd_policy_mgmt

NEW QUESTION 8

DRAG DROP

Your network contains an Active Directory Domain Services (AD DS) domain.

You need to implement a solution that meets the following requirements:

Ensures that the members of the Domain Admins group are allowed to sign in only to domain controllers Ensures that the lifetime of Kerberos

Ticket Granting Ticket (TGT) for the members of the Domain Admins group is limited to one hour Which three actions should you perform in sequence? To answer, move the appropriate actions from the list of actions to the answer area and arrange them in the correct order.

Select and Place:

Actions	Answer Area
Create a Dynamic Access Control central access policy.	
Configure the Kerberos Policy settings for the Default Domain Policy Group Policy Object (GPO).	
Create a Dynamic Access Control claim type.	
Create an authentication policy.	
Assign the authentication policy silo to user and computer accounts.	
Create an authentication policy silo.	

- A. Mastered
- B. Not Mastered

Answer: A

Explanation:
Reference: <https://docs.microsoft.com/en-us/windows-server/identity/ad-ds/manage/how-to-configure-protected-accounts>

NEW QUESTION 9
HOTSPOT

Your network contains an Active Directory Domain Services (AD DS) domain named contoso.com. The domain contains the organizational units (OUs) shown in the following table.

Name	Contents
Domain Controllers	All the domain controllers in the domain
Domain Servers	All the servers that run Windows Server in the domain
Domain Client Computers	All the client computers that run Windows 10 in the domain
Domain Users	All the users in the domain

In the domain, you create the Group Policy Objects (GPOs) shown in the following table.

Name	IPsec setting
GPO1	Require authentication by using Kerberos V5 for inbound connections
GPO2	Request authentication by using Kerberos V5 for inbound connections
GPO3	Require authentication by using X.509 certificates for inbound connections
GPO4	Request authentication by using X.509 certificates for inbound connections

You need to implement IPsec authentication to ensure that only authenticated computer accounts can connect to the members in the domain. The solution must minimize administrative effort. Which GPOs should you apply to the Domain Controllers OU and the Domain Servers OU? To answer, select the appropriate options in the answer area. NOTE: Each correct selection is worth one point.

Hot Area:

Answer Area

Domain Controllers:

GPO1

GPO2

GPO3

GPO4

Domain Servers:

GPO1

GPO2

GPO3

GPO4

- A. Mastered
- B. Not Mastered

Answer: A

Explanation:
Reference: <https://docs.microsoft.com/en-us/windows/security/threat-protection/windows-firewall/configure-authenticationmethods>

NEW QUESTION 10

You have an Azure subscription that has Microsoft Defender for Cloud enabled.

You have 50 Azure virtual machines that run Windows Server.

You need to ensure that any security exploits detected on the virtual machines are forwarded to Defender for Cloud.

Which extension should you enable on the virtual machines?

- A. Vulnerability assessment for machines
- B. Microsoft Dependency agent
- C. Log Analytics agent for Azure VMs
- D. Guest Configuration agent

Answer: A

Explanation:

Reference: <https://docs.microsoft.com/en-us/azure/defender-for-cloud/deploy-vulnerability-assessment-vm>

NEW QUESTION 10

You have 10 servers that run Windows Server in a workgroup.

You need to configure the servers to encrypt all the network traffic between the servers. The solution must be as secure as possible.

Which authentication method should you configure in a connection security rule?

- A. NTLMv2
- B. pre-shared key
- C. Kerberos V5
- D. computer certificate

Answer: D

Explanation:

Reference: <https://docs.microsoft.com/en-us/windows/security/threat-protection/windows-firewall/create-an-authenticationrequest-rule>

NEW QUESTION 14

You have an Azure virtual machine named VM1.

You enable Microsoft Defender SmartScreen on VM1.

You need to ensure that the SmartScreen messages displayed to users are logged.

What should you do?

- A. From a command prompt, run WinRM quickconfig.
- B. From the local Group Policy, modify the Advanced Audit Policy Configuration settings.
- C. From Event Viewer, enable the Debug log.
- D. From the Windows Security app, configure the Virus & threat protection settings.

Answer: C

Explanation:

Reference: <https://docs.microsoft.com/en-us/windows/security/threat-protection/microsoft-defender-smartscreen/microsoftdefendersmartscreenoverview>

NEW QUESTION 16

Note: This question is part of a series of questions that present the same scenario. Each question in the series contains a unique solution that might meet the stated goals. Some question sets might have more than one correct solution, while others might not have a correct solution.

After you answer a question in this section, you will NOT be able to return to it. As a result, these questions will not appear in the review screen.

You have a failover cluster named Cluster1 that hosts an application named App1.

The General tab in App1 Properties is shown in the General exhibit. (Click the General tab.)

App1 Properties

General Failover

App1

Name:
App1

Preferred Owners
Select the preferred owners for this clustered role. Use the buttons to list them in order from most preferred at the top to least preferred at the bottom.

☐ Server1
☐ Server2

Priority: Medium

Status: Running
Node: Server2

OK Cancel Apply

The Failover tab in App1 Properties is shown in the Failover exhibit. (Click the Failover tab.)

App1 Properties

General Failover

Failover
Specify the number of times the Cluster service will attempt to restart or fail over the clustered role in the specified period.
If the clustered role fails more than the maximum in the specified period, it will be left in the failed state.

Maximum failures in the specified period: 3

Period (hours): 6

Failback
Specify whether the clustered role will automatically fail back to the most preferred owner (which is set on the General tab).

☐ Prevent failback
☒ Allow failback

☒ Immediately
☐ Failback between 0 and 0 hours

OK Cancel Apply

Server1 shuts down unexpectedly.

You need to ensure that when you start Server1, App1 continues to run on Server2.

Solution: You increase Maximum failures in the specified period for the App1 cluster role.

Does this meet the goal?

- A. Yes
- B. No

Answer: B

Explanation:

The Maximum failures setting is used to determine when the cluster determines that a node is offline. It does not affect whether a cluster will fail back when a node comes online.

NEW QUESTION 17

Note: This question is part of a series of questions that present the same scenario. Each question in the series contains a unique solution that might meet the stated goals. Some question sets might have more than one correct solution, while others might not have a correct solution.

After you answer a question in this section, you will NOT be able to return to it. As a result, these questions will not appear in the review screen.

You have a failover cluster named Cluster1 that hosts an application named App1.

The General tab in App1 Properties is shown in the General exhibit. (Click the General tab.)

App1 Properties

General Failover

App1

Name: App1

Preferred Owners
 Select the preferred owners for this clustered role. Use the buttons to list them in order from most preferred at the top to least preferred at the bottom.

☐ Server1
☐ Server2

Priority: Medium

Status: Running

Node: Server2

OK Cancel Apply

The Failover tab in App1 Properties is shown in the Failover exhibit. (Click the Failover tab.)

App1 Properties

General Failover

Failover
 Specify the number of times the Cluster service will attempt to restart or fail over the clustered role in the specified period.
 If the clustered role fails more than the maximum in the specified period, it will be left in the failed state.

Maximum failures in the specified period: 3

Period (hours): 6

Failback
 Specify whether the clustered role will automatically fail back to the most preferred owner (which is set on the General tab).

☐ Prevent failback
☒ Allow failback

☒ Immediately
☐ Failback between 0 and 0 hours

OK Cancel Apply

Server1 shuts down unexpectedly.
 You need to ensure that when you start Server1, App1 continues to run on Server2.
 Solution: From the General settings, you move Server2 up.
 Does this meet the goal?

- A. Yes
- B. No

Answer: B

Explanation:

Server1 and Server2 are both unticked so the order they are listed in has no effect on whether the cluster will fail back.

NEW QUESTION 22

HOTSPOT

You have a Hyper-V failover cluster named Cluster1 at a main datacenter. Cluster1 contains two nodes that have the Hyper- V server role installed. Cluster1 hosts 10 highly available virtual machines.

You have a cluster named Cluster2 in a disaster recovery site. Cluster2 contains two nodes that have the Hyper-V server role installed.

You plan to use Hyper-V Replica to replicate the virtual machines from Cluster1 to Cluster2.

What should you do? To answer, select the appropriate options in the answer area.

NOTE: Each correct selection is worth one point.

Hot Area:

Answer Area

Cluster role to create on Cluster2:

<input type="checkbox"/> Distributed Transaction Coordinator (DTC)
<input type="checkbox"/> Generic Script
<input type="checkbox"/> Hyper-V Replica Broker
<input type="checkbox"/> Virtual machine

Replication target name to specify:

<input type="checkbox"/> Cluster2
<input type="checkbox"/> The name of a node on Cluster2
<input type="checkbox"/> The name of each virtual machine
<input type="checkbox"/> The name of the Hyper-V Replica Broker

- A. Mastered
- B. Not Mastered

Answer: A

Explanation:

Reference: <https://docs.microsoft.com/en-us/virtualization/community/team-blog/2012/20120327-why-is-the-hyper-v-replicabroker-required>

NEW QUESTION 24

You have an on-premises server named Server1 that runs Windows Server and has the Hyper-V server role installed.

You have an Azure subscription.

You plan to back up Server1 to Azure by using Azure Backup.

Which two Azure Backup options require you to deploy Microsoft Azure Backup Server (MABS)? Each correct answer presents a complete solution.

NOTE: Each correct selection is worth one point.

- A. Bare Metal Recovery
- B. Files and folders
- C. System State
- D. Hyper-V Virtual Machines

Answer: AC

Explanation:

Reference: <https://docs.microsoft.com/en-us/azure/backup/backup-mabs-system-state-and-bmr>

NEW QUESTION 26

You have 200 Azure virtual machines.

You create a recovery plan in Azure Site Recovery to fail over all the virtual machines to an Azure region. The plan has three manual actions.

You need to replace one of the manual actions with an automated process.

What should you use?

- A. an Azure Desired State Configuration (DSC) virtual machine extension
- B. an Azure Automation runbook
- C. an Azure PowerShell function
- D. a Custom Script Extension on the virtual machines

Answer: B

Explanation:

Reference:

<https://docs.microsoft.com/en-us/azure/site-recovery/recovery-plan-overview>

NEW QUESTION 30

You have a server named Server1 that runs Windows Server and has the Hyper-V server role installed.

You import the Azure Migrate appliance as VM1.

You need to register VM1 with Azure Migrate.

What should you do in Azure Migrate? Each correct answer presents part of the solution.

NOTE: Each correct selection is worth one point.

- A. Create a project.
- B. Add a migration tool.
- C. Add an assessment tool.
- D. Generate a project key.
- E. Download the Azure Migrate installer script ZIP file.

Answer: ADE

Explanation:

Reference:

<https://docs.microsoft.com/en-us/azure/migrate/how-to-set-up-appliance-hyper-v>

NEW QUESTION 31

You have two servers that run Windows Server as shown in the following table.

Name	Location	Domain/workgroup
Server1	On-premises	Domain
Server2	Azure virtual machine	Workgroup

You need to copy the contents of volume E from Server1 to Server2. The solution must meet the following requirements:

Ensure that files in-use are copied. Minimize administrative effort.

What should you use?

- A. Storage Migration Service
- B. Azure File Sync
- C. Azure Backup
- D. Storage Replica

Answer: A

NEW QUESTION 36

You have an Azure virtual machine named VM1 that has the Web Server (IIS) server role installed. VM1 hosts a critical lineof- business (LOB) application.

After the security team at your company deploys a new security baseline to VM1, users begin reporting that the application is unresponsive.

You suspect that the security baseline has caused networking issues.

You need to perform a network trace on VM1.

What should you do?

- A. From VM1, run netstat.
- B. From Performance Monitor on VM1, create a Data Collector Set.
- C. From the Azure portal, configure the Diagnostics settings for VM1.
- D. From the Azure portal, configure the Performance diagnostics settings for VM1.

Answer: D

Explanation:

Reference: <https://docs.microsoft.com/en-us/troubleshoot/azure/virtual-machines/performance-diagnostics>

NEW QUESTION 39

Your on-premises network contains two subnets. The subnets contain servers that run Windows Server as shown in the following table.

Name	IP address
Server1	192.168.1.10
Server2	192.168.0.250
Server3	192.168.0.240
Server4	192.168.0.10

Server4 has the following IP configurations:

Ethernet adapter Ethernet:

Connection-specific DNS Suffix . . . :

IPv4 Address : 192.168.0.10

Subnet Mask : 255.255.255.0

Default Gateway : 192.168.0.1

From Server4, you can ping Server1 and Server2 successfully. When you ping Server3, you get a Request timed out response.

From Server2, you can ping Server1 and Server3 successfully.

The misconfiguration of which component on Server3 can cause the Request timed out response?

- A. default gateway
- B. IP address
- C. subnet mask
- D. DNS server

Answer: C

NEW QUESTION 42

You have an Azure virtual machine named VM1.

You install an application on VM1, and then restart the virtual machine.

After the restart, you get the following error message: "Boot failure. Reboot and Select proper Boot Device or Insert Boot Media in selected Boot Device." You need to mount the operating system disk offline from VM1 to a temporary virtual machine to troubleshoot the issue.

Which command should you run in Azure CLI?

- A. az vm repair create
- B. az vm boot-diagnostics enable
- C. az vm capture

D. az vm disk attach

Answer: A

Explanation:

Reference:

<https://docs.microsoft.com/en-us/cli/azure/vm/repair?view=azure-cli-latest>

NEW QUESTION 44

.....

Thank You for Trying Our Product

We offer two products:

1st - We have Practice Tests Software with Actual Exam Questions

2nd - Questions and Answers in PDF Format

AZ-801 Practice Exam Features:

- * AZ-801 Questions and Answers Updated Frequently
- * AZ-801 Practice Questions Verified by Expert Senior Certified Staff
- * AZ-801 Most Realistic Questions that Guarantee you a Pass on Your First Try
- * AZ-801 Practice Test Questions in Multiple Choice Formats and Updates for 1 Year

100% Actual & Verified — Instant Download, Please Click
[Order The AZ-801 Practice Test Here](#)