

## PL-900 Dumps

### Microsoft Power Platform Fundamentals

<https://www.certleader.com/PL-900-dumps.html>



### NEW QUESTION 1

- (Exam Topic 1)

A company uses Power Platform.

You must ensure that users cannot share customer data with other users. You must also ensure that users cannot connect to data sources unless you grant the user explicit permissions to access a data source.

You need to recommend solutions to meet the company's security requirements.

Which two types of policies should you recommend? Each correct answer presents part of the solution.

NOTE: Each correct selection is worth one point.

- A. Office cloud policies
- B. Group Policy Objects
- C. environment-level policies
- D. tenant-level policies
- E. preset security policies

**Answer:** CD

#### Explanation:

Reference:

<https://docs.microsoft.com/en-us/power-platform/admin/wp-data-loss-prevention> <https://docs.microsoft.com/en-us/power-platform/admin/create-dlp-policy>

### NEW QUESTION 2

- (Exam Topic 1)

You create a user-owned custom entity by using Common Data Service.

For each of the following statements, select Yes if the statement is true. Otherwise, select No. NOTE: Each correct selection is worth one point.

Statement	Yes	No
You can change the entity ownership from User to Organization-owned.	<input type="radio"/>	<input type="radio"/>
You can create a business rule for a custom entity that can be used in a Flow.	<input type="radio"/>	<input type="radio"/>

- A. Mastered
- B. Not Mastered

**Answer:** A

#### Explanation:

Box 1: No

Common Data Service supports two types of record ownership. Organization owned, and User or Team owned. This is a choice that happens at the time the entity is created and can't be changed.

Box 2: Yes

By combining conditions and actions, you can do any of the following with business rules: Set field values

Clear field values

Set field requirement levels Show or hide fields

Enable or disable fields

Validate data and show error messages

Create business recommendations based on business intelligence. Reference:

<https://docs.microsoft.com/en-us/power-platform/admin/wp-security-cds>

### NEW QUESTION 3

- (Exam Topic 1)

A large retail company implements Power Apps, Microsoft Flow, and the Common Data Service.

The board of directors is asking whether users are finding value in the technology. The company would like to measure and report usage of the software.

You need to recommend a tool to determine software usage. What should you recommend?

- A. Microsoft Intune
- B. Azure Stream Analytics
- C. Power Platform Analytics
- D. Dynamics 365 Product Insights

**Answer:** C

#### Explanation:

The Power Platform Analytics Usage report is the default reports seen by the logged in environment admin. It provides total app launches and daily active users across all apps in the environment. Admins can filter the view with attributes like device platform, player version, country, state, and city.

Reference:

<https://docs.microsoft.com/en-us/power-platform/admin/analytics-powerapps>

### NEW QUESTION 4

- (Exam Topic 1)

You are building Power Apps apps that use both Dynamics 365 Sales and Microsoft 365.

For each of the following statements, select Yes if the statement is true. Otherwise, select No. NOTE: Each correct selection is worth one point.

Statement	Yes	No
Dynamics 365 Sales and Microsoft 365 must be in the same tenant to allow Single Sign-On (SSO).	<input type="radio"/>	<input type="radio"/>
You must download a product from AppSource to ensure that SSO works with Dynamics 365 Sales and Microsoft 365.	<input type="radio"/>	<input type="radio"/>

- A. Mastered
- B. Not Mastered

**Answer:** A

**Explanation:**

Box 1: No

When you offer your application for use by other companies through a purchase or subscription, you make your application available to customers within their own Azure tenants. This is known as creating a multi-tenant application.

Box 2: No Reference:

<https://docs.microsoft.com/en-us/azure/active-directory/manage-apps/isv-sso-content>

**NEW QUESTION 5**

- (Exam Topic 1)

You manage the support team at a rapidly growing company.

Customers and support technicians need a better experience when logging and responding to support requests. You need more visibility into what the support technicians are doing every week.

You need to recommend tools to help the company's needs.

Which tools should you recommend? To answer, drag the appropriate tools to the correct requirements. Each tool may be used once, more than once, or not at all.

You may need to drag the split bar between panes or scroll to view content.

NOTE: Each correct selection is worth one point.

Tools	Requirement	Tool
Power Apps		
Microsoft Flow	Customers must be able to submit support requests by using a website.	Tool
Power BI	Support requests must be created and stored.	Tool
Common Data Service	Support technicians must be notified when a new support request is entered.	Tool
	Support technicians must be able to enter a status report for work completed during the previous week by using a mobile app.	Tool

- A. Mastered
- B. Not Mastered

**Answer:** A

**Explanation:**

Tools	Requirement	Tool
Power Apps		
Microsoft Flow	Customers must be able to submit support requests by using a website.	Power BI
Power BI	Support requests must be created and stored.	Common Data Service
Common Data Service	Support technicians must be notified when a new support request is entered.	Microsoft Flow
	Support technicians must be able to enter a status report for work completed during the previous week by using a mobile app.	Power Apps

NEW QUESTION 6

- (Exam Topic 1)

A rapidly growing company wants to empower users to build apps, automate business processes, and analyze data without requiring I expertise or development skills and without increasing IT expenses and dependencies.  
You need to recommend tools so that users can accomplish specific tasks.  
Which tools should you recommend? To answer, select the appropriate options in the answer area. NOTE: Each correct selection is worth one point.

Scenario	Application
Build automatic workflows that access multiple data sources.	<div>▼</div> <div>AI Builder Power Apps Microsoft Flow Azure Functions Power BI</div>
Create custom apps that address specific business needs.	<div>▼</div> <div>AI Builder Power Apps Microsoft Flow Azure Functions Power BI</div>
Design insightful data visualizations.	<div>▼</div> <div>AI Builder Power Apps Microsoft Flow Azure Functions Power BI</div>

- A. Mastered
- B. Not Mastered

Answer: A

Explanation:

Box 1: Microsoft Flow

Microsoft Flow, now called Power Automate, is cloud-based software that allows employees to create and automate workflows and tasks across multiple applications and services without help from developers.

Box 2: Power Apps

PowerApps is a suite of apps, services, connectors and data platform that provides a rapid application development environment to build custom apps for your business needs.

Box 3: Power BI

Power BI is a business analytics solution that lets youvisualizeyour data and share insights across your organization, or embed them in your app or website. Connect to hundreds of data sources and bring your data to life with live dashboards and reports.

Reference:

<https://docs.microsoft.com/en-us/powerapps/powerapps-overview>

NEW QUESTION 7

- (Exam Topic 1)

A travel company plans to use the Power Platform to create tools that help travel agents book customer travel. You need to recommend solutions for the company. What should you recommend? To answer, drag the appropriate tools to the correct requirements. Each tool may be used once, more than once, or not at all. You may need to drag the split bar between panes or scroll to view content.  
NOTE: Each correct selection is worth one point.

Tools		Requirement	Tool
Business rule			Tool
Business process flow	•	If a customer is travelling with a person under the age of 18, a field must display to collect date of birth for the under 18 traveler only.	Tool
Power Automate	•	Ensure that all travel agents use the same process with all customers.	Tool
Power BI	•	Send a confirmation email to customers after reservations are complete.	Tool

- A. Mastered
- B. Not Mastered

Answer: A



**Explanation:**

Reference:

<https://docs.microsoft.com/en-us/power-automate/getting-started>

<https://docs.microsoft.com/en-us/powerapps/maker/common-data-service/data-platform-create-business-rule#:~:>

**NEW QUESTION 8**

- (Exam Topic 1)

You are a customer service manager.

You need to implement a Power Apps portal that allows customers to submit cases. Which type of data source is used?

- A. Dynamics 365 Connector
- B. Microsoft SharePoint
- C. Microsoft Azure Storage
- D. Common Data Service

**Answer:** B

**Explanation:**

SharePoint can be set up to setup customer feedback.

Note: The PowerApp uses Finance and Operations connector to grab sales order information and SharePoint connector to connect and write the data to SharePoint list.

Reference:

<https://powerapps.microsoft.com/en-us/blog/scenario-2-collect-customer-feedback-in-sharepoint-after-order-delivery/>

**NEW QUESTION 9**

- (Exam Topic 1)

A company has locations in multiple regions. The company develops solutions based on Power Apps and Power Automate.

You need to recommend features to support the implementation.

Which Power Platform features should you recommend? To answer, drag the appropriate features to the correct requirements. Each feature may be used once, more than once, or not at all. You may need to drag the split bar between panes or scroll to view content.

NOTE: Each correct selection is worth one point.

Features

Environment

Security group

SharePoint library

Answer Area

Requirement

Ensure fastest response times for each company location.

Create test and production copies of the data and apps.

Feature

Feature

Feature

- A. Mastered
- B. Not Mastered

**Answer:** A

**Explanation:**

Reference:

<https://docs.microsoft.com/en-us/power-platform/admin/environments-overview> <https://docs.microsoft.com/en-us/power-platform/admin/control-user-access>

**NEW QUESTION 10**

- (Exam Topic 2)

A company plans to use AI Builder to help improve business performance. You need to determine which AI Models are available for use.

Which three types of models can you use? Each correct answer presents a complete solution. NOTE: Each correct selection is worth one point.

- A. linear regression
- B. binary classification
- C. object detection
- D. anomaly detection
- E. text classification

**Answer:** BCE

**Explanation:**

Reference:

<https://carldesouza.com/using-the-ai-builder-in-the-microsoft-power-platform-for-binary-classification/>

**NEW QUESTION 10**

- (Exam Topic 2)

A company plans to use Power BI to visualize data from business systems.

For each of the following statements, select Yes if the statement is true. Otherwise, select No. NOTE: Each correct selection is worth one point.

Statement	Yes	No
You can display data aggregates and raw data in a Power BI report.	<input type="radio"/>	<input type="radio"/>
You can display related data from Dynamics 365 Customer Engagement and Excel in the same Power BI report.	<input type="radio"/>	<input type="radio"/>
You create a Power App to supply data for a Power BI report. You can modify the data directly in the report.	<input type="radio"/>	<input type="radio"/>

- A. Mastered  
B. Not Mastered

**Answer: A**

**Explanation:**

Box 1: Yes

The following list provides advantages to using aggregations:

Query performance over big data - as users interact with visuals on Power BI reports, DAX queries are submitted to the dataset. Boost query speeds by caching data at the aggregated level, using a fraction of the resources required at the detail level. Unlock big data in a way that would otherwise be impossible.

Box 2: No

You can connect to model-driven apps in Dynamics 365 with Power BI Desktop to create custom reports and dashboards for use with the Power BI service.

You can use similar steps to connect to model-driven apps in Dynamics 365 using Office Excel Power Query by selecting From Other Sources on the Power Query tab in Excel.

Box 3: Yes

Using the PowerApps custom visual, you will be able to pass context aware data to a PowerApps app which updates in real time as you make changes to your report.

Reference:

<https://docs.microsoft.com/en-us/power-bi/desktop-aggregations> <https://docs.microsoft.com/en-us/power-platform/admin/use-power-bi>

<https://powerapps.microsoft.com/sv-se/blog/powerbi-powerapps-visual/>

**NEW QUESTION 11**

- (Exam Topic 2)

A coworker is creating an app in Power Apps and needs to automatically synchronize data from an external source. The coworker is unable to locate a suitable Microsoft approved connector template in AppSource.

You need to recommend a solution for the coworker. What should you recommend?

- A. Create a custom connector.  
B. Ask the outside source to send you the data once a week.  
C. Use Microsoft Flow to connect to the database.  
D. Open a ticket with Microsoft and request a new connector.  
E. Use Microsoft Azure Service Bus.

**Answer: A**

**Explanation:**

There are 250 + predefined connectors that you can use in your PowerApps and in your Microsoft Flows. If you do not find any that suits your needs you have the possibility to create a Custom Connector.

Note: A Custom Connector is a wrapper around a REST API (Logic Apps also supports SOAP APIs) that allows Logic Apps, Microsoft Flow, or PowerApps to communicate with that REST or SOAP API.

Reference:

<https://carinaclaesson.com/2019/09/06/setting-up-a-custom-connector-from-an-openapi-file-and-utilizing-it-in-p>

**NEW QUESTION 12**

- (Exam Topic 2)

A business is evaluating AI Builder. Which actions can you perform?

For each of the following statements, select Yes if the statement is true. Otherwise, select No. NOTE: Each correct selection is worth one point.

Statement	Yes	No
You can use a text classification model in AI Builder to retrieve text and perform sentiment analysis for ServiceNow incidents.	<input type="radio"/>	<input type="radio"/>
You can tag Instagram posts that mention your new product.	<input type="radio"/>	<input type="radio"/>
You can send results about the number of mentions of your new product in Instagram to Power BI for inclusion on a dashboard.	<input type="radio"/>	<input type="radio"/>

- A. Mastered
- B. Not Mastered

**Answer:** A

**Explanation:**

Reference:

<https://docs.microsoft.com/en-us/ai-builder/create-text-classification-model> <https://radacad.com/object-detector-app-with-ai-builder-and-power-apps>

**NEW QUESTION 17**

- (Exam Topic 2)

What is a benefit of deploying Microsoft 365 and Dynamics 365 apps in the same tenant?

- A. Use Common Data Services to connect to application data.
- B. You only need to set up groups in Microsoft 365 for permissions to all data.
- C. Users can access both Microsoft 365 and Dynamics 365 by using Single Sign-on (SSO).

**Answer:** A

**NEW QUESTION 19**

- (Exam Topic 2)

You are creating a model-driven Power Apps app. You want to ensure that the app can be used by individuals who have vision impairments.

For each of the following statements, select Yes if the statement is true. Otherwise, select No. NOTE: Each correct selection is worth one point.

Statement	Yes	No
Power Apps apps can be built with hot key support and designed so they do not require a touch screen or mouse.	<input type="radio"/>	<input type="radio"/>
Only model-driven Power Apps have support for using a screen reader without the need for a connector.	<input type="radio"/>	<input type="radio"/>
The accessibility checker can be run for your Power Apps app to provide notifications of accessibility violations as well as tips for making it even more user friendly.	<input type="radio"/>	<input type="radio"/>

- A. Mastered
- B. Not Mastered

**Answer:** A

**Explanation:**

Box 1: Yes

You can use keyboard shortcuts in PowerApps. Keyboard shortcuts give you an alternate way to do common tasks instead of using your mouse or tapping with your finger. They help in seamless navigation of the interface.

Box 2: No

The following software combinations are the supported recommendations for consuming PowerApps with a screen reader:

Windows: Microsoft Edge / Narrator macOS: Safari / VoiceOver Android: PowerApps app / Talkback iOS: PowerApps app / VoiceOver

Box 3: Yes

Users who have vision, hearing, or other impairments can use your canvas app more easily and successfully if you consider accessibility as you design how the app looks and behaves. If you're not sure how to make your app more accessible, you can run the Accessibility checker in PowerApps Studio. This tool not only finds potential accessibility issues but also explains why each might be a potential problem for users who have a specific disability and offers suggestions on how to resolve each issue. The Accessibility checker detects screen-reader and keyboard issues for you, and you can find information about how to fix color-contrast issues by using accessible colors.

Reference:

<https://docs.microsoft.com/en-us/powerapps/user/keyboard-shortcuts> <https://docs.microsoft.com/en-us/powerapps/user/screen-reader>

<https://docs.microsoft.com/en-us/powerapps/maker/canvas-apps/accessibility-checker>

**NEW QUESTION 24**

- (Exam Topic 2)

Your company wants to create a help desk system and implement Dynamics 365 Customer Service. The company has the following requirements:

- Provide an application to allow support team staff to chat live with a customer.
- Automatically import data from a Microsoft Excel spreadsheet once a day.
- Provide a chatbot that can assist customers who need support.

You need to determine which applications to use to meet the requirements.

Which applications should you use? To answer, select the appropriate options in the answer area. NOTE: Each correct selection is worth one point.

Requirement	Application
Automatically import data from a Microsoft Excel spreadsheet once a day.	<div><div></div><div>Custom Connector</div><div>Azure Data Lake</div><div>Power Automate</div><div>Power BI</div></div>
Provide a chatbot that can assist customers who need support.	<div><div></div><div>Power Virtual Agent</div><div>Power Automate</div></div>

- A. Mastered  
B. Not Mastered

Answer: A

**Explanation:**

Graphical user interface, text, application, chat or text message Description automatically generated

Reference:

<https://docs.microsoft.com/en-us/power-virtual-agents/fundamentals-what-is-power-virtual-agents>

A 10-step Guide to Excel Automation using Power Automate Desktop | by Utkarsh Shahdeo | Medium

**NEW QUESTION 26**

- (Exam Topic 2)

A company plans to implement solutions that use Common Data Service as a data storage.

You need to recommend features to meet the company's needs.

Which features should you recommend? To answer, drag the appropriate features to the correct requirements. Each feature may be used once, more than once, or not at all. You may need to drag the split bar between panes or scroll to view content.

NOTE: Each correct selection is worth one point.

Features	Requirement	Answer Area
<div>business rules</div>		
<div>business process flows</div>	Validate data across multiple fields and entities regardless of the app used to create data.	<div>Feature</div>
<div>Common Data Model</div>	Create visual guides to ensure that users enter data and perform tasks in a consistent manner.	<div>Feature</div>
	Accelerate development by using a standard set of entities for the most common scenarios.	<div>Feature</div>

- A. Mastered  
B. Not Mastered

Answer: A

**Explanation:**

Box 1: business rules

You can create business rules and recommendations to apply logic and validations without writing code or creating plug-ins. Business rules provide a simple interface to implement and maintain fast-changing and commonly used rules.

Box 2: business process flows

Flows Power Automate includes several types of processes, each designed for a different purpose:

- Automated flows. Create a flow that performs one or more tasks automatically after it's triggered by an event.
- Button flows. Perform repetitive tasks simply by tapping a button on your mobile device.
- Scheduled flows. Create a flow that performs one or more tasks on a schedule such as once a day, on a specific date, or after a certain time.
- Business process flows. Ensure that people enter data consistently and follow the same steps every time they work in an app by creating a business process flow.
- Workflows and actions. Dynamics 365 customizers may be familiar with the classic Common Data Service processes, which are workflows and actions.

Box 3: Common Data Model

Model-driven app design is a component-focused approach to app development. Model-driven app design doesn't require code and the apps you make can be simple or very complex. Unlike canvas app development where the designer has complete control over app layout, with model-driven apps much of the layout is determined for you and largely designated by the components you add to the app.

Reference:

<https://docs.microsoft.com/en-us/powerapps/maker/model-driven-apps/guide-staff-through-common-tasks-proce>

<https://docs.microsoft.com/en-us/powerapps/maker/model-driven-apps/model-driven-app-overview>

**NEW QUESTION 27**



- (Exam Topic 2)

A company is evaluating Power Platform and has questions about the role that Common Data Service plays in using Power Apps and Power Automate. For each of the following statements, select Yes if the statement is true. Otherwise, select No. NOTE: Each correct selection is worth one point.

Statement	Yes	No
Model-driven apps require a Common Data Service database.	<input type="radio"/>	<input type="radio"/>
A flow instance can only access one Common Data Service database.	<input type="radio"/>	<input type="radio"/>
Canvas apps require a Common Data Service database.	<input type="radio"/>	<input type="radio"/>

- A. Mastered
- B. Not Mastered

**Answer:** A

**Explanation:**

Statement	Yes	No
Model-driven apps require a Common Data Service database.	<input checked="" type="radio"/>	<input type="radio"/>
A flow instance can only access one Common Data Service database.	<input checked="" type="radio"/>	<input type="radio"/>
Canvas apps require a Common Data Service database.	<input checked="" type="radio"/>	<input type="radio"/>

#### NEW QUESTION 28

- (Exam Topic 3)

You create a set of dashboards and reports for a project team that combines data from different sources in Power BI. Some of the data is considered sensitive. You need to distribute the dashboards and reports securely to the team. What should you create?

- A. a custom data connector
- B. a published app
- C. a Microsoft flow
- D. a Power BI workspace

**Answer:** B

**Explanation:**

Reference:

<https://docs.microsoft.com/en-us/power-bi/service-how-to-collaborate-distribute-dashboards-reports>

#### NEW QUESTION 30

- (Exam Topic 3)

A company plans to display support call metrics on a screen that is visible to all call center staff.

You need to recommend solutions to meet the company's requirements.

What should you recommend? To answer, drag the appropriate components to the correct requirements. Each component may be used once, more than once, or not at all. You may need to drag the split bar between panes or scroll to view content.

NOTE: Each correct selection is worth one point.

Components	Requirement	Component
Tile	Display a chart with incoming calls versus wait time and pin the chart to a dashboard.	<input type="text" value="Component"/>
Template App	Send a specific user a notification when the number of customer support calls waiting is over 20.	<input type="text" value="Component"/>
Treemap	Display metrics from different datasets that have related data.	<input type="text" value="Component"/>
Page		
Theme		
Alert		
DirectQuery		
Workspace		

- A. Mastered
- B. Not Mastered

**Answer:** A

**Explanation:**

Reference:

<https://docs.microsoft.com/en-us/power-bi/create-reports/service-dashboard-tiles> <https://docs.microsoft.com/en-us/power-bi/create-reports/service-set-data-alerts>  
<https://docs.microsoft.com/en-us/power-bi/visuals/power-bi-visualization-treemaps>

### NEW QUESTION 33

- (Exam Topic 3)

You create a Power BI dashboard that displays Common Data Model data. You need to share the Power BI dashboard with coworkers and allow the coworkers to collaborate. What are two possible ways to achieve the goal? Each correct answer presents a complete solution. NOTE: Each correct selection is worth one point.

- A. Create a Power Automate flow to export the data into a SQL Server database.
- B. Publish the dashboard as an app to your coworkers.
- C. Export the data to Microsoft Excel
- D. Make required changes and then re-import the data.
- E. Create a Power BI workspace and grant coworkers permissions.

**Answer:** AB

#### Explanation:

Reference:

<https://docs.microsoft.com/en-us/power-bi/collaborate-share/service-create-the-new-workspaces>

### NEW QUESTION 38

- (Exam Topic 3)

A company needs to create a series of mobile applications to empower their field engineers to accomplish several tasks with varying degrees of complexity.

Match each option to its answer.

Instructions: To answer, drag the appropriate app type from the column on the left to its definition on the right. Each app type may be used once, more than once, or not at all.

NOTE: Each correct match is worth one point.

App types	Answer Area	
	Definition	App type
model-driven		
dashboard	Quickly create apps for very complex business processes with very little or no code.	App type
dataset		
canvas	Create simple apps with a highly customizable user interface layouts.	App type

- A. Mastered
- B. Not Mastered

**Answer:** A

#### Explanation:

Box 1: canvas

Both model-driven and canvas apps allow you to easily build business apps. They both share access to the Common Data Service providing standard and custom entities. Canvas apps start with your user experience, crafting a highly tailored interface with the power of a blank canvas and connecting it to 200 data sources. Canvas apps can be built for web, mobile, and tablet applications. Model-driven apps start with your data model – building up from the shape of your core business data and processes in the Common Data Service to model forms, views, and other components. Model-driven apps automatically generate great UI that is responsive across devices.

Box 2: model-driven Reference:

<https://powerapps.microsoft.com/sv-se/blog/introducing-model-driven-apps/>

### NEW QUESTION 39

- (Exam Topic 3)

You are a district manager for a large retail organization. You train each store manager to use Power BI to track sales and daily sales targets.

A store manager remembers learning about the Analyze in Excel option but cannot find the option in their Power BI dashboard.

You need to help the user resolve the issue. How should you advise the user?

- A. Install the Power BI Desktop app.
- B. Navigate to the report used by the dashboard.
- C. Select the Spotlight button on the dashboard tile.
- D. Subscribe to the dashboard and follow the email link.

**Answer:** B

#### Explanation:

Reference:

<https://docs.microsoft.com/en-us/power-bi/collaborate-share/service-analyze-in-excel>

### NEW QUESTION 43

- (Exam Topic 3)

You are creating visuals in Power BI.

You create area charts, pie charts, and donut charts that use your company's data. You need to display the charts to others at the company.

Which two objects can you add the charts to? Each correct answer presents a complete solution.  
NOTE: Each correct selection is worth one point.

- A. Power BI service
- B. Power BI reports
- C. Power BI desktop
- D. Power BI dashboards

**Answer:** BD

**Explanation:**

Reference:

<https://docs.microsoft.com/en-us/power-bi/visuals/power-bi-visualization-types-for-reports-and-q-and-a>

**NEW QUESTION 48**

- (Exam Topic 3)

A company runs a call center to handle customer support inquiries.

The company tracks metrics including the number of incoming calls, call resolution rates, and escalations. The company wants to display the metrics on a shared screen that is visible to all call center staff.

You need to recommend a solution for the company. Which Power Platform feature should you recommend?

- A. AI Builder
- B. Power Automate
- C. Power Apps
- D. Power BI

**Answer:** D

**NEW QUESTION 49**

- (Exam Topic 3)

A company manages a chain of retail stores. The company stores a list of retail store names and numbers in one Power BI table. The company stores sales transaction data including a transaction ID in another table.

The transaction ID includes the store number.

You need to show the store name for all retail transactions in all Power BI reports.

Which tool should you use?

- A. Query Editor
- B. Power BI Service
- C. Microsoft Excel
- D. Data Connector

**Answer:** A

**Explanation:**

Power BI Desktop comes with Query Editor, where you can connect to one or many data sources, shape and transform the data to meet your needs, then load that model into Power BI Desktop.

Reference:

<https://docs.microsoft.com/en-us/power-bi/desktop-query-overview>

**NEW QUESTION 53**

- (Exam Topic 3)

What is a benefit of deploying Microsoft 365 and Dynamics 365 apps in the same tenant?

- A. You do not need to manually back up data.
- B. Both will use the same time zone.
- C. You can use Power BI to display data that comes from both environments.
- D. You can implement Single Sign-On (SSO).

**Answer:** C

**Explanation:**

Reference:

<https://docs.microsoft.com/en-us/power-platform/admin/use-power-bi>

**NEW QUESTION 55**

- (Exam Topic 3)

You create a Power BI dashboard that displays data from Dynamics 365 Customer Engagement. You need to share the Power BI dashboard with coworkers.

What are three possible ways to achieve the goal? Each correct answer presents a complete solution. NOTE: Each correct selection is worth one point.

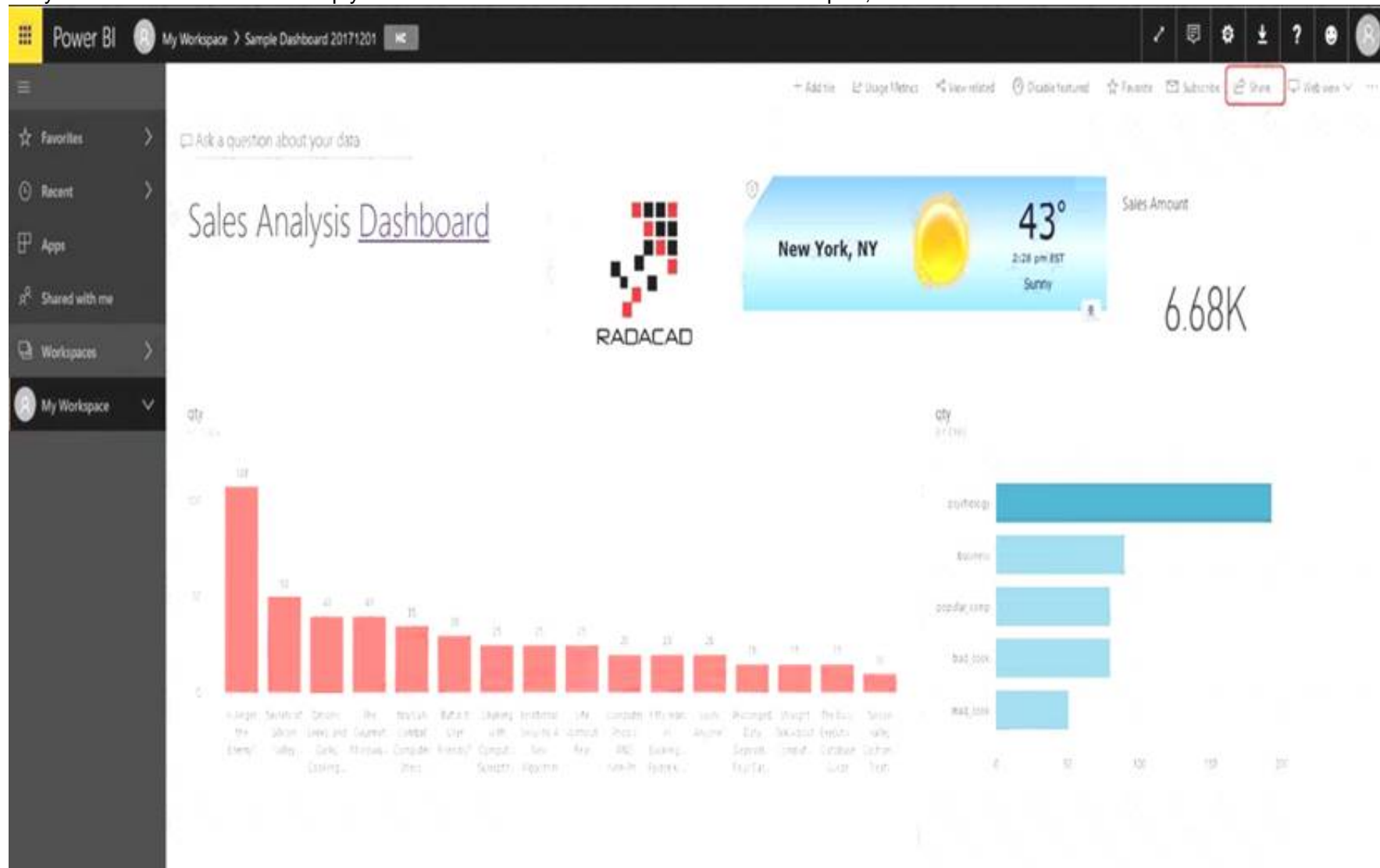
- A. Create a Power BI workspace and grant coworkers permissions.
- B. Publish the dashboard as an app to your coworkers.
- C. Export the data into Common Data Service for others to manipulate in Power BI.
- D. Export the data to Microsoft Excel for coworkers to import and view in Power BI.
- E. Embed reports in your company's internal web portal.

**Answer:** ABE

**Explanation:**

A: Basic Sharing for Dashboards and Reports through a workspace is the most common way of sharing the Power BI content. Basic Sharing is very simple and

easy to use method. You can simply click on the Share button in the dashboard or report, and then share it with other users.



B: Apps are great sharing method for multiple environment, and best way of sharing for users in production environment.

Power BI App is the solution for multiple environment approach. With Power BI App, your development environment (workspace), and user environment (App) are isolated from each other.

Note: If you are using SharePoint online as a portal for document management and some other reasons already, then consider using Embed in SharePoint Online feature of Power BI reports. This method is secure and you can share the report only with Power BI users you want.

E: Sometimes, you don't need a secure way of sharing, you may search for an easy and free way of sharing, and your content is not confidential or sensitive.

Publish to web is your friend in such situation. This is the only free way of sharing in Power BI, but be aware that this method is not secure.

Publish to web method, gives you an embed code, which you can use in any web pages to embed the Power BI report in it

Reference:

<https://radacad.com/power-bi-sharing-methods-comparison-all-in-one-review>

### NEW QUESTION 59

- (Exam Topic 3)

A carpet cleaning company uses Dynamics 365 Sales.

The process for entering customer information during onsite sales calls is very complicated. The company wants a simplified screen that allows salespeople to capture the customer name, phone number, and other information while speaking to the customer.

You need to recommend a solution that works on various types of mobile devices. What should you recommend?

- A. Common Data Service
- B. Microsoft Flow
- C. AI Builder
- D. Canvas app
- E. Power BI

**Answer: E**

**Explanation:**

Reference:

<https://powerapps.microsoft.com/en-us/build-powerapps/>

### NEW QUESTION 63

- (Exam Topic 3)

A user is starting to learn about Power Apps.

Which objects should you use? To answer, select the appropriate options in the answer area. NOTE: Each correct selection is worth one point.



A Power Apps app can call a

	▼
connector	
flow	
gateway	
solution	

Actions and triggers are properties of a

	▼
connector	
flow	
gateway	
solution	

- A. Mastered  
B. Not Mastered

**Answer:** A

**Explanation:**

Reference:

<https://docs.microsoft.com/en-us/powerapps/powerapps-overview> <https://docs.microsoft.com/en-us/power-automate/getting-started>

**NEW QUESTION 66**

- (Exam Topic 3)

A recent update has been made to a canvas app. The update has caused a negative impact to users. You need to roll back the app to a previous version. What should you do?

- A. Restore the previous version of the app.  
B. Uninstall the app for all users and reinstall by using the previous versions' package.  
C. Deactivate the live app, import the previous version of the app, and then activate the app.  
D. Delete the app and create a new app based on the previous version.

**Answer:** A

**Explanation:**

Restore a canvas app to a previous version in PowerApps. Restore an app from your account

- Open [powerapps.com](https://powerapps.com), and then click or tap Apps in the left navigation bar.
- Near the right edge, click or tap the info icon for the app that you want to restore.
- Click or tap the Versions tab, and then click or tap Restore for the version that you want to restore.
- In the confirmation dialog box, click or tap Restore.

A new version is added to your list. Reference:

<https://docs.microsoft.com/en-us/powerapps/maker/canvas-apps/restore-an-app>

**NEW QUESTION 71**

- (Exam Topic 3)

You create reports within Power BI to report on the status of a project. A manager asks you to share the reports with other team members. You decide to create a published app and set permissions to allow other team members to view the reports.

For each of the following statements, select Yes if the statement is true. Otherwise, select No. NOTE: Each correct selection is worth one point.

Statement	Yes	No
The Power BI published app is stored within the Team site so that others can install it.	<input type="radio"/>	<input type="radio"/>
One of the other project managers installs and modifies a dashboard within the Power BI published app. The changes are automatically made into the original published app.	<input type="radio"/>	<input type="radio"/>

- A. Mastered  
B. Not Mastered

**Answer:** A

**Explanation:**

Reference:

<https://docs.microsoft.com/en-us/power-bi/collaborate-share/service-create-distribute-apps>

#### NEW QUESTION 75

- (Exam Topic 3)

You are using Dynamics 365 Sales.

You need to pull data into a Power BI report for your team. The City and State columns must be combined to form one column on the report.

Which function would you use? Each correct answer presents a complete solution. NOTE: Each correct selection is worth one point.

- A. Use Power Query to merge columns.
- B. Import the data.18912E1457D5D1DDCBD40AB3BF70D5D
- C. Export data to Microsoft Excel.
- D. Create a view.

**Answer:** A

#### Explanation:

Reference:

<https://docs.microsoft.com/en-us/power-bi/desktop-shape-and-combine-data>

#### NEW QUESTION 78

- (Exam Topic 3)

A company plans to implement Power BI to analyze retail operations data. You need to recommend solutions for the company.

Which Power BI components should the company use? To answer, drag the appropriate Power BI components to the correct requirements. Each Power BI component may be used once, more than once, or not at all. You may need to drag the split bar between panes or scroll to view content.

NOTE: Each correct selection is worth one point.

Power BI components	Answer Area	
	Requirement	Power BI component
reports		
workspaces	Allow users to set and receive alerts when data changes beyond specified limits.	
dashboards		
dataset	View and filter data and export data to Microsoft Excel for further manipulation and analysis.	

- A. Mastered
- B. Not Mastered

**Answer:** A

#### Explanation:

Power BI components	Answer Area	
	Requirement	Power BI component
reports		
workspaces	Allow users to set and receive alerts when data changes beyond specified limits.	workspaces
dashboards		
dataset	View and filter data and export data to Microsoft Excel for further manipulation and analysis.	dataset

#### NEW QUESTION 80

- (Exam Topic 3)

You have a Power BI report.

For each of the following statements, select Yes if the statement is true. Otherwise, select No. NOTE: Each correct selection is worth one point.

Statement	Yes	No
You can export data from a visualization in a Power BI report.	<input type="radio"/>	<input type="radio"/>
You can show the data behind a visual report on your screen without exporting the data.	<input type="radio"/>	<input type="radio"/>
You must export data to view supporting data for a KPI.	<input type="radio"/>	<input type="radio"/>

A. Mastered

B. Not Mastered

**Answer:** A

**Explanation:**

Box 1: Yes

If you'd like to see the data that Power BI uses to create a visualization, you can display that data in Power BI. You can also export that data to Excel as an .xlsx or .csv file. The option to export the data requires a Pro or Premium license and edit permissions to the dataset and report.

Note: Export data from a Power BI dashboard

- Select the ellipsis in the upper-right corner of the visualization.
- Choose the Export data icon.
- Power BI exports the data to a .csv file. If you've filtered the visualization, then the app will filter the downloaded data.
- Your browser will prompt you to save the file. Once saved, open the .csv file in Excel.

Box 2: No

Underlying data: Select this option if you want to see the data in the visual and additional data from the model (see chart below for details). If your visualization has an aggregate, selecting Underlying data removes the aggregate. When you select Export, Power BI exports the data to an .xlsx file and your browser prompts you to save the file. Once saved, open the file in Excel.

Box 3: Yes

A KPI dataset needs to contain goal values for a KPI. If your dataset doesn't contain goal values, you can create them by adding an Excel sheet with goals to your data model or PBIX file.

Note: A Key Performance Indicator (KPI) is a visual cue that communicates the amount of progress made toward a measurable goal.

Reference:

<https://docs.microsoft.com/en-us/power-bi/visuals/power-bi-visualization-export-data> <https://docs.microsoft.com/en-us/power-bi/visuals/power-bi-visualization-kpi>

**NEW QUESTION 85**

- (Exam Topic 4)

A user is trying to understand the differences between the various ways apps can be built by using Power Apps.

For each of the following statements, select Yes if the statement is true. Otherwise, select No. NOTE: Each correct selection is worth one point.

Statement	Yes	No
You can embed canvas apps in model-driven apps.	<input type="radio"/>	<input type="radio"/>
A Power Apps portal can use only one data source.	<input type="radio"/>	<input type="radio"/>
You must use Power BI to create reports in model-driven apps.	<input type="radio"/>	<input type="radio"/>

A. Mastered

B. Not Mastered

**Answer:** A

**Explanation:**

Box 1: Yes

You can create a canvas app and then embed that within a model driven app.

Box 2: No

With the capability to build a portal in PowerApps, you can create a website for external and internal users enabling them to interact with data stored in Common Data Service.

Note: Common Data Service lets you securely store and manage data that's used by business applications. Data within Common Data Service is stored within a set of entities. An entity is a set of records used to store data, similar to how a table stores data within a database. Common Data Service includes a base set of standard entities that cover typical scenarios, but you can also create custom entities specific to your organization and populate them with data using Power Query. App makers can then use PowerApps to build rich applications using this data.

Box 3: Yes

To get started building a report you'll need the latest version of Power BI Desktop and a PowerApps environment with the latest version of the Common Data Service.

Reference:

<https://carlidesouza.com/how-to-embed-a-canvas-app-in-a-model-driven-app-in-powerapps/> <https://docs.microsoft.com/en-us/powerapps/maker/portals/create-portal> <https://docs.microsoft.com/en-us/powerapps/maker/common-data-service/data-platform-intro>

**NEW QUESTION 87**

- (Exam Topic 4)

You create a Power App portal.

When a user signs into the portal the following error displays: user not found You confirm that the user's sign in information is correct.

You need to determine the cause of the error. What should you do?

- A. Disable custom error messages.
- B. Create a custom error message.
- C. Enable diagnostic tools in Lifecycle Services.
- D. Enable Maintenance mode.

Answer: C

**Explanation:**

Reference:

<https://docs.microsoft.com/en-us/dynamics365/fin-ops-core/dev-itpro/lifecycle-services/monitoring-diagnostics> <https://docs.microsoft.com/en-us/dynamics365/fin-ops-core/dev-itpro/lifecycle-services/user-logins>

**NEW QUESTION 89**

- (Exam Topic 4)

A company plans to create a canvas app that connects to three databases with different proprietary database formats. What is the minimum number of connectors required?

- A. 1
- B. 2
- C. 3

Answer: B

**Explanation:**

Reference:

<https://docs.microsoft.com/en-us/powerapps/maker/canvas-apps/working-with-data-sources>

**NEW QUESTION 92**

- (Exam Topic 4)

You create a canvas app that allows contractors to submit time they work against a project.

Contractors must be able to use the canvas app to enter time. Contractors must not be able to perform any other actions in the app.

You need to configure permissions for the contractors. Which type of permissions should you use?

- A. application-level
- B. task-level
- C. record-level
- D. field-level

Answer: D

**Explanation:**

Field-level security feature to allow more granular control of security at the field level. Reference:

<https://docs.microsoft.com/en-us/power-platform/admin/security-roles-privileges> <https://docs.microsoft.com/en-us/power-platform/admin/wp-security-cds>

**NEW QUESTION 97**

- (Exam Topic 4)

A company plans to implement Power Apps in a Power Platform environment. You need to implement other required components.

Match each option to its function. To answer, drag the appropriate option from the column on the left to its function on the right. Each option may be used once, more than once, or not at all.

NOTE: Each correct match is worth one point.

**Products**

Microsoft Azure

custom connector

Microsoft Flow

model-driven app

canvas app

**Answer Area**

**Function**

Implement user authentication.

Send data to a Microsoft OneNote notebook in the same tenant.

**Product**

- A. Mastered
- B. Not Mastered

Answer: A

**Explanation:**

Reference:

<https://powerapps.microsoft.com/en-us/blog/implementing-role-based-permission/> <https://www.encorebusiness.com/blog/powerapps-flow-can/>

**NEW QUESTION 102**

- (Exam Topic 4)

A company is considering implementing Power Platform.

For which three scenarios should you consider implementing Power Apps portals? Each correct answer presents a complete solution.

NOTE: Each correct selection is worth one point.

- A. a customer support website that includes knowledge search and support for document uploads

The Leader of IT Certification

visit - <https://www.certleader.com>



- B. a public website that supports multi-lingual communities with forums and blogs support
- C. an online store with e-commerce requirements including payment processing
- D. a secure website for vendors accessing data stored in Common Data Service
- E. an internal website for employees to access selected data from Dynamics 365 Finance

**Answer:** ABE

**Explanation:**

Reference:

<https://docs.microsoft.com/en-us/powerapps/maker/portals/portal-templates>

**NEW QUESTION 106**

- (Exam Topic 4)

You create a canvas app by using the Generate from data feature. The app connects to a Microsoft SharePoint list.

For each of the following statements, select Yes if the statement is true. Otherwise, select No. NOTE: Each correct selection is worth one point.

Statement	Yes	No
A screen is generated that contains a browsable list of SharePoint list items.	<input type="radio"/>	<input type="radio"/>
A screen is generated that allows users to update SharePoint list items.	<input type="radio"/>	<input type="radio"/>

- A. Mastered
- B. Not Mastered

**Answer:** A

**Explanation:**

Reference:

<https://docs.microsoft.com/en-us/powerapps/maker/canvas-apps/app-from-sharepoint>

**NEW QUESTION 109**

- (Exam Topic 4)

You create a Power Apps canvas app.

You need to ensure that your coworkers can run the app. What should you do?

- A. Share the app.
- B. Send the URL for the app to coworkers.
- C. Add a license for the app.
- D. Create a Flow for the app.

**Answer:** A

**Explanation:**

Reference:

<https://docs.microsoft.com/en-us/powerapps/maker/canvas-apps/share-app>

**NEW QUESTION 111**

- (Exam Topic 4)

A company plans to build new apps for the business to allow employees to work more efficiently. You need to recommend the appropriate types of Power Apps to meet the company's requirements.

To answer, drag the appropriate app types to the correct requirements. Each app type may be used once, more than once, or not at all. You may need to drag the split bar between panes or scroll to view content.

NOTE: Each correct selection is worth one point.

Answer Area		
App types	Requirement	App type
model-driven	Build mobile apps that use cameras and location data.	
portals		
canvas	Give external users secure access to your data.	
AI Builder		

- A. Mastered

B. Not Mastered

Answer: A

Explanation:

Reference:

<https://docs.microsoft.com/en-us/powerapps/maker/canvas-apps/getting-started> <https://docs.microsoft.com/en-us/powerapps/maker/portals/overview>

NEW QUESTION 112

- (Exam Topic 4)

A company plans to build Power Apps portals.

For each of the following statements, select Yes if the statement is true. Otherwise, select No. NOTE: Each correct selection is worth one point.

Statement	Yes	No
You must use standard templates for building portals.	<input type="radio"/>	<input type="radio"/>
You can test portals in non-prodcution environments and then migrate the portals into production environments.	<input type="radio"/>	<input type="radio"/>
When transitioning to the new version of a portal, you can display a customizable maintenance page until the new portal is ready to be used.	<input type="radio"/>	<input type="radio"/>

A. Mastered

B. Not Mastered

Answer: A

Explanation:

Reference:

<https://docs.microsoft.com/en-us/powerapps/maker/portals/overview> <https://docs.microsoft.com/en-us/powerapps/maker/portals/admin/migrate-portal-configuration>  
<https://docs.microsoft.com/en-us/powerapps/maker/portals/admin/enable-maintenance-mode>

NEW QUESTION 115

- (Exam Topic 4)

A company is creating a canvas app to display data from a legacy system that is located on the company's internal network.

You need to connect to the data. What should you use?

- A. custom connector
- B. content pack
- C. data gateway
- D. Power Automate

Answer: C

Explanation:

<https://docs.microsoft.com/en-us/powerapps/maker/canvas-apps/gateway-management>

NEW QUESTION 120

- (Exam Topic 4)

A company is building a Power Apps portal.

You need to select out-of-the-box portal types to meet the company's requirements.

Which portal types should you use? To answer, drag the appropriate portal types to the correct requirements. Each portal type may be used once, more than once, or not at all. You may need to drag the split bar between panes or scroll to view content.

NOTE: Each correct selection is worth one point.

Portal types	Answer Area	
	Requirement	Portal type
partner portal		
community portal	Collaboratively onboard new suppliers and distributors.	Portal type
portal from blank	Publish a blog post announcing new suppliers.	Portal type
customer self-service portal		

- A. Mastered
- B. Not Mastered

**Answer:** A

**Explanation:**

Box 1: Partner portal

A partner portal allows every organization with resellers, distributors, suppliers, or partners to have real-time access to every stage of shared activities.

Box 2: Community portal

A community portal leverages peer-to-peer interactions between customers and experts to organically grow the catalog of available knowledge from knowledge base articles, forums, and blogs as well as providing feedback through comments and ratings.

Reference:

<https://docs.microsoft.com/en-us/powerapps/maker/portals/portal-templates>

**NEW QUESTION 125**

- (Exam Topic 4)

You are designing a Power Apps solution that allows users to upload a status report directly to the company Microsoft SharePoint project management site from their mobile device.

For each of the following statements, select Yes if the statement is true. Otherwise, select No. NOTE: Each correct selection is worth one point.

Statement	Yes	No
You should build a model-driven app in Power Apps.	<input type="radio"/>	<input type="radio"/>
You should build a canvas app in Power Apps.	<input type="radio"/>	<input type="radio"/>
Users must download and run the Power Apps mobile application to use the solution.	<input type="radio"/>	<input type="radio"/>

- A. Mastered
- B. Not Mastered

**Answer:** A

**Explanation:**

Box 1: No

Box 2: Yes

Box 3: Yes

When you create an app, or someone shares an app with you, you can run that app on Windows, iOS, Android, or in a web browser.

References:

<https://docs.microsoft.com/en-us/powerapps/maker/canvas-apps/app-from-sharepoint> <https://docs.microsoft.com/en-us/powerapps/user/run-app-client>

**NEW QUESTION 129**

- (Exam Topic 5)

A company uses Dynamics 365 Customer Service. The company uses a manual process to manage call escalations.

You must use Power Automate to automate the process for routing escalated calls. You need to create the flow.

Which type of connector should you use?

- A. Microsoft Excel
- B. Common Data Service
- C. Office 365 Users

**Answer:** B

**NEW QUESTION 130**

- (Exam Topic 5)

You build a flow using a template. You want to add support for additional business scenarios. You need to ensure that the new workflow does not break existing functionality.

Which flow editing utilities should you use? To answer, drag the appropriate tools to the correct requirements. Each tool may be used once, more than once, or not at all. You may need to drag the split bar between panes or scroll to view content.

NOTE: Each correct selection is worth one point.

Tools	Answer Area	
Test	Requirement	Tool
Flow Checker	Check the new flow for any errors or warnings.	Tool
	Run the flow using previously processed data.	Tool
	Monitor the flow as it is running.	Tool

- A. Mastered
- B. Not Mastered

Answer: A

Explanation:

Box 1: Flow Checker

The Flow checker feature will promote higher quality flows by ensuring you follow best practices. By running the checker, you will be able to get answers to questions like: which areas of my flow implementation pose a performance or reliability risk?

For each issue identified, the Flow checker points to specific occurrences within the flow where improvements may be required. And more importantly, you learn how to implement these improvements by following detailed guidance.

Box 2: Test

Box 3: Test Reference:

<https://flow.microsoft.com/en-us/blog/flow-checker-four-connectors/> <https://docs.microsoft.com/en-us/power-automate/modern-approvals>

NEW QUESTION 133

- (Exam Topic 5)

A company is using Power Automation to automate business processes. You need to recommend triggers for Instant flows.

What trigger types should you recommend? To answer, select the appropriate options in the answer area. NOTE: Each correct selection is worth one point.

Requirement	Trigger type
Run a flow when the user presses a button in a canvas app.	<div><div></div><div>PowerApps for a selected row manually trigger a flow for a selected file (OneDrive for a Business)</div></div>
Run a flow when user presses a button in the mobile Flow app.	<div><div></div><div>PowerApps for a selected row manually trigger a flow for a selected file (SharePoint)</div></div>

- A. Mastered
- B. Not Mastered

Answer: A

Explanation:

Reference:

<https://docs.microsoft.com/en-us/powerapps/maker/canvas-apps/using-logic-flows> <https://www.o365dude.com/2017/07/15/flow-buttons-the-hidden-gem-of-microsoft-flow/>

NEW QUESTION 135

- (Exam Topic 5)

You are new to working with Microsoft Flow. You create a flow that extracts birth dates for users and then sends a birthday greeting email to users on their birthday.

The flow does not properly extract birth dates. Where should you make changes?

- A. Connectors
- B. Expression
- C. Templates

Answer: A



**Explanation:**

Select the new Date Time connector. There you will see all of the actions, which help you to convert time zones to format them for local time in an email, add or subtract times, or just get the current time.

Reference:

<https://flow.microsoft.com/en-us/blog/nested-apply-to-each/>

**NEW QUESTION 138**

- (Exam Topic 5)

Users within a company use Flow for personal productivity.

Users often overwrite their working flows by editing the definitions and are unable to undo changes after saving a flow.

You need to ensure that users can revert a flow to the current state.

Which two options can you use? Each correct answer presents a complete solution. NOTE: Each correct selection is worth one point.

- A. Export
- B. Rename
- C. Save As
- D. Share

**Answer:** AC

**Explanation:**

A: You can export a flow as a package and import it into a different environment, or use it to restore the in the same environment at a later point in time.

C: The ability to make a copy of your flow is often useful when you want to create a flow similar to something you've already created. Or, if you want to maintain a draft of your working flow as you work on adding more functionality.

Here's how:

Go to your My flows page. Click on the More (...) menu item next to the flow that you want to create a copy of. Click on the Save As command.

Reference:

<https://flow.microsoft.com/en-us/blog/import-export-bap-packages/> <https://flow.microsoft.com/en-us/blog/make-a-copy/>

**NEW QUESTION 139**

- (Exam Topic 5)

You have a Power Automate flow that saves attachments from emails into OneDrive for Business. You need to determine why the flow is not working.

What are three possible ways to achieve the goal? Each correct answer presents a complete solution. NOTE: Each correct selection is worth one point.

- A. Navigate to the Power Automate web portal and click view notifications.
- B. Enable Repair Tips for the flow.
- C. Navigate to the Action Items section of the Power Automate portal.
- D. Navigate to the Power Automate admin center and view the projects.
- E. Navigate to the flow and view the run history.

**Answer:** ABE

**Explanation:**

Reference:

<https://docs.microsoft.com/en-us/power-automate/fix-flow-failures>

**NEW QUESTION 140**

- (Exam Topic 5)

You are building a Power Automate flow to manage sales.

The sales team saves quotes as PDF files to a Microsoft OneDrive folder. You create a Microsoft SharePoint list to help the sales team manage follow ups to quotes. You need to copy the customer name, phone number, and the amount of the potential sale from the sales quote and insert the data into the SharePoint list. Which AI Builder model should you use?

- A. key phrase extraction
- B. sentiment analysis OC.
- C. text recognition
- D. language detection

**Answer:** C

**Explanation:**

Reference:

<https://docs.microsoft.com/en-us/ai-builder/prebuilt-text-recognition>

**NEW QUESTION 144**

- (Exam Topic 5)

A company plans to synchronize data between Dynamics 365 Supply Chain management and Dynamics 365 Sales.

For each of the following statements, select Yes if the statement is true. Otherwise, select No. NOTE: Each correct selection is worth one point.

Statement	Yes	No
You can implement a process-based integration by using the Data Integration feature.	<input type="radio"/>	<input type="radio"/>
You can use Microsoft Azure Data Migration to synchronize data between the apps.	<input type="radio"/>	<input type="radio"/>

- A. Mastered  
B. Not Mastered

**Answer:** A

**Explanation:**

Reference:

<https://docs.microsoft.com/en-us/business-applications-release-notes/april19/cdm-data-integration/cds-data-integ>

**NEW QUESTION 145**

- (Exam Topic 5)

A company uses Microsoft 365, SharePoint Online, and Dynamics 365 Sales.

You need to recommend tools to build a solution that meets the following requirements: Synchronize data from an external Microsoft SQL Server instance.

Send out of the box report automatically to specific company executives.

Ensure that opportunities over a specified amount are approved by a sales manager.

Which two tools or components should you recommend? Each correct answer presents part of the solution. NOTE: Each correct selection is worth one point.

- A. Microsoft Excel  
B. Microsoft Word  
C. Power Automate  
D. Common Data Service  
E. Microsoft Flow

**Answer:** DE

**Explanation:**

Reference:

<https://docs.microsoft.com/en-us/power-platform/admin/data-integrator> <https://www.powerobjects.com/blog/2019/04/05/flow-approval-process/>

**NEW QUESTION 147**

- (Exam Topic 5)

A company uses a third party application and an approval process via email. At the end of the month, the IT department enters the data into Microsoft Excel to create pivot charts.

The Excel pivot charts must use the same data source as Dynamics 365 Field Service to generate charts and reports.

You need to recommend a solution.

What should you recommend? To answer, select the appropriate configuration in the answer area. NOTE: Each correct selection is worth one point.

Requirement	Solution
Create an approval workflow.	<div> <input type="text"/>▼           <ul style="list-style-type: none"> <li>Dynamics 365 Workflow Notifications</li> <li>Microsoft Outlook Integration</li> <li>AI Builder</li> <li>Microsoft Flow</li> </ul> </div>
Connect to report data.	<div> <input type="text"/>▼           <ul style="list-style-type: none"> <li>Common Data Service and Power BI</li> <li>Third-party from AppSource</li> <li>Custom Code flat file integration</li> <li>Dynamics 365 Field Service</li> </ul> </div>

- A. Mastered  
B. Not Mastered

**Answer:** A

**Explanation:**

Box 1: Dynamics 365 Workflow notifications

You can configure the system to send email messages to users when workflow-related events occur. Note:

- Go to Navigation pane > Modules > System administration > Users > Users.
- In the list, find and select the desired record.
- On the Action pane, click User options.
- Click the Workflow tab. Make sure that the Notifications section is expanded. In the Notifications section, you can specify how you want the user to be notified about workflow-related events.

Box 2: Dynamics 365 Field Service

Supply Chain Management enables synchronization of business processes between Dynamics 365 Supply Chain Management and Dynamics 365 Field Service. The integration scenarios are configured by using extensible Data integrator templates and Common Data Service to enable the synchronization of business processes. Standard templates can be used to create custom integration projects, where additional standard and custom fields and entities can be mapped to adjust the integration and meet specific business needs.

Reference:

<https://docs.microsoft.com/en-us/dynamics365/fin-ops-core/fin-ops/organization-administration/tasks/users-rece>

#### NEW QUESTION 152

- (Exam Topic 5)

You are creating a number of Power Automate flows. You need to select the triggers for the flows.

Which flow types should you use? To answer, select the appropriate options in the answer area.

NOTE: Each correct selection is worth one point.

### Answer Area

Requirement	Flow type
Trigger a flow when a button is selected.	<div><div></div><div>UI Flow Automatic Business Process Flow Instant</div></div>
Trigger a flow when a record is created.	<div><div></div><div>UI Flow Automatic Business Process Flow Instant</div></div>
Guide a user through a series of steps in a model-driven app.	<div><div></div><div>UI Flow Automatic Business Process Flow Instant</div></div>

A. Mastered

B. Not Mastered

**Answer:** A

#### Explanation:

Graphical user interface, text, application, email Description automatically generated

Reference:

<https://docs.microsoft.com/en-us/power-automate/triggers-introduction> <https://docs.microsoft.com/en-us/power-automate/business-process-flows-overview>

#### NEW QUESTION 157

- (Exam Topic 5)

A company has a website. The website includes a form that allows the company to collect information about leads.

You need to set up an automated workflow to create leads in Dynamics 365 Sales when leads are created on the company's custom website.

What should you create?

A. Task Flow

B. Power Automate flow

C. Dynamics 365 workflow

D. Business Process Flow

**Answer:** B

#### Explanation:

Reference:

<https://trellispoint.com/create-crm-leads-using-microsoft-flow/>

**NEW QUESTION 162**

- (Exam Topic 5)

You are learning about Power Apps and how to use triggers.

Which objects should you use? To answer, select the appropriate options in the answer area. NOTE: Each correct selection is worth one point.

**Answer Area**

	Statement	Component
<input type="checkbox"/>	A Power Apps app can trigger this when a condition is met.	<div>connector</div> <div>Power Automate flow</div> <div>gateway</div> <div>solution</div>
	Actions and triggers are properties of a	<div>connector</div> <div>gateway</div> <div>solution</div>

- A. Mastered  
B. Not Mastered

**Answer:** A

**Explanation:**

Graphical user interface, text, application, email Description automatically generated

**NEW QUESTION 166**

- (Exam Topic 6)

You create a Power Virtual Agents chatbot for a company.

The management wants to learn about the effectiveness of the chatbot.

You need to identify the percentage of customers who stop responding to prompts from the chatbot. Which report should you view?

- A. Customer satisfaction  
B. Engagement over time  
C. Escalation rate drivers  
D. Session outcomes overtime

**Answer:** B

**Explanation:**

Reference:

<https://docs.microsoft.com/en-us/power-virtual-agents/teams/analytics-csat-teams>

**NEW QUESTION 168**

- (Exam Topic 6)

You are developing a Power Virtual Agents chatbot for a company.

For each of the following statements, select Yes if the statement is true. Otherwise, select No.

NOTE: Each correct selection is worth one point.

Statement	Yes	No
You must create a topic to specify how a chatbot responds to a user.	<input type="radio"/>	<input type="radio"/>
You can use prebuilt entities or custom defined entities.	<input type="radio"/>	<input type="radio"/>

- A. Mastered  
B. Not Mastered

**Answer:** A

**Explanation:**

Graphical user interface, text, application Description automatically generated

Reference:

<https://docs.microsoft.com/en-us/power-virtual-agents/authoring-fundamentals> <https://docs.microsoft.com/en-us/power-virtual-agents/advanced-entities-slot-filling>

**NEW QUESTION 170**

- (Exam Topic 6)

You are creating a Power Virtual Agents chatbot for a company.

Which component types should you use for each scenario? To answer, select the appropriate options in the answer area.

NOTE: Each correct selection is worth one point.



Answer Area

Scenario

Component type

The chatbot needs to capture of the user id for authentication.

Topic  
Entity  
Action

A customer asks a question that needs to be handed off to a live Customer Support representative.

Topic  
Entity  
Action

- A. Mastered  
B. Not Mastered

**Answer:** A

**Explanation:**

Graphical user interface, application Description automatically generated

Reference:

<https://docs.microsoft.com/en-us/power-virtual-agents/fundamentals-what-is-power-virtual-agents> <https://www.c-sharpcorner.com/article/get-started-with-bot-development-with-microsoft-power-virtual-agent-ste>

**NEW QUESTION 171**

- (Exam Topic 6)

You are planning to allow members of your team to test your chatbot. You must ensure this is done in a secure way.

A team member named User1 must test the chatbot. You need to ensure that User1 can complete testing. What should you do?

- A. Sign in to the authoring environment as the chatbot author.  
B. Sign in to Microsoft Azure DevOps as the chatbot author.  
C. Sign in to Microsoft Azure DevOps as User1.  
D. Sign in to the authoring environment as User1.

**Answer:** A

**NEW QUESTION 173**

- (Exam Topic 6)

You are building a Power Virtual Agents chatbot for a company.

You are working with an existing topic and would like to call an action. Which technology is available to perform the action?

- A. Power Virtual Agent Entity  
B. Power Apps  
C. Power Automate  
D. Power BI

**Answer:** C

**Explanation:**

Reference:

<https://docs.microsoft.com/en-us/power-virtual-agents/advanced-flow>

**NEW QUESTION 175**

- (Exam Topic 7)

A business uses a form to collect information. You create a business process flow for the form. The top of the form must display where the user is in the process.

You need to identify what to configure at the top of the form. What should you identify?

- A. Step  
B. Stage  
C. Branch  
D. Workflow

**Answer:** B

**NEW QUESTION 176**

- (Exam Topic 7)

You are creating a Power Apps solution for a company that manufactures bicycles. The company has The following requirements:

- A vendor uploads a Microsoft Excel workbook to the company each week. The workbook contains lists of parts and their current prices. You must automatically Import the data into Microsoft Dataverse as soon as the workbook is uploaded. You must send specific users an alert when new files are uploaded.
- Synchronize customer data with a proprietary accounting database when a user selects a button on the Account form.

You need to recommend the trigger types to use to meet the requirements.

Which trigger types should you use? To answer, drag the appropriate trigger types to the correct requirements. Each trigger type may be used once, more than once, or not at all. You may need to drag the split bar between panes or scroll to view content.

NOTE: Each correct selection is worth one point.

Trigger types	Requirement	Trigger type
Push trigger	Send a notification when an Excel workbook is uploaded.	Trigger type
Polling trigger	Synchronize customer data with a proprietary accounting database.	Trigger type
Triggers for scheduled flows		
Triggers for business process flow		

- A. Mastered  
B. Not Mastered

**Answer:** A

**Explanation:**

Trigger types	Requirement	Trigger type
Push trigger	Send a notification when an Excel workbook is uploaded.	Push trigger
Polling trigger	Synchronize customer data with a proprietary accounting database.	
Triggers for scheduled flows		
Triggers for business process flow		

#### NEW QUESTION 179

- (Exam Topic 7)

You create a Power BI dashboard.

Match each option to its requirement. To answer, drag the appropriate option from the column on the left to the correct requirement on the right. Each option may be used once, more than once, or not at all.

NOTE: Each correct match is worth one point.

Options	Requirement	Option
Share	Ensure that coworkers can see the dashboard.	Option
Embed	Display data from Microsoft Excel in the dashboard.	Option
Get Data	Add a report tile to the dashboard.	Option
Pin		

- A. Mastered  
B. Not Mastered

**Answer:** A

**Explanation:**

Options	Requirement	Option
Share	Ensure that coworkers can see the dashboard.	Share
Embed	Display data from Microsoft Excel in the dashboard.	Get Data
Get Data	Add a report tile to the dashboard.	Pin
Pin		

#### NEW QUESTION 181

- (Exam Topic 7)

A company uses a model-driven app for their mobile sales activities.

The company wants to modify the view that is used for sales orders. You must apply a new default filter to the view. You must also modify the default sorting for sales orders.

You need to make the changes to the view.

In which three locations can you make the changes? Each correct answer presents a complete solution.

NOTE: Each correct selection is worth one point.

- A. Power Apps site  
B. Solution Explorer  
C. Microsoft Azure DevOps  
D. App Designer

**Answer:** ACD

**Explanation:**

You can edit or remove a filter condition through the Power Apps site. You can create and edit Analytics views in Azure DevOps.

An alternative to editing views in the tables is to edit views from the app designer. Reference:

<https://docs.microsoft.com/en-us/powerapps/maker/model-driven-apps/create-edit-view-filters> <https://docs.microsoft.com/en-us/azure/devops/report/powerbi/analytics-views-create>

<https://docs.microsoft.com/en-us/powerapps/maker/model-driven-apps/create-edit-views-app-designer>

**NEW QUESTION 185**

- (Exam Topic 7)

You need to create a mobile application which will allow sales associates to enter customer sales leads. Which four actions should you perform in sequence? To answer, move the appropriate actions from the list of actions to the answer area and arrange them in the correct order.

Actions		Answer area
Save the app.		
Add components to the app.		
Publish the app.		
Add flows to the app.		
Go to the Office 365 admin center.		
Create a new Power Apps app.		

- A. Mastered
- B. Not Mastered

**Answer:** A

**Explanation:**

Reference:

<https://docs.microsoft.com/en-us/powerapps/maker/model-driven-apps/build-first-model-driven-app>

**NEW QUESTION 186**

- (Exam Topic 7)

You are using Power Virtual Agents to create a chatbot for your Power Apps portal.

You need the chatbot to start from the beginning of the conversation if user input is unrecognized. What should you configure?

- A. Trigger
- B. Error message
- C. Fallback topic
- D. At features

**Answer:** C

**NEW QUESTION 189**

- (Exam Topic 7)

A company is creating a canvas app to track and analyze customer visits to their retail stores. Data about customer visits is stored on-premises at each retail store location. The app must display data about customer visits when users launch the app. You need to ensure that the data is available for consumption by the app. Which tool should you use?

- A. Data gateway
- B. Data source
- C. Connector
- D. Microsoft Dataverse
- E. Power Automate

**Answer:** A

**NEW QUESTION 190**

- (Exam Topic 7)

A company plans to create a Microsoft Dataverse environment.

For each of the following statements, select Yes if the statement is true. Otherwise, select No. NOTE: Each correct selection is worth one point.

Statement	Yes	No
You can create a Microsoft Dataverse environment in the Power Platform Admin center.	<input type="radio"/>	<input type="radio"/>
You must enable data encryption after you create a Microsoft Dataverse environment.	<input type="radio"/>	<input type="radio"/>
You can control security roles and privileges in a Microsoft Dataverse environment from the Power Apps Admin center.	<input type="radio"/>	<input type="radio"/>

- A. Mastered  
B. Not Mastered

**Answer:** A

**Explanation:**

Answer Area

	Statement	Yes	No
	You can create a Microsoft Dataverse environment in the Power Platform Admin center.	<input checked="" type="radio"/>	<input type="radio"/>
	You must enable data encryption after you create a Microsoft Dataverse environment.	<input type="radio"/>	<input checked="" type="radio"/>
	You can control security roles and privileges in a Microsoft Dataverse environment from the Power Apps Admin center.	<input checked="" type="radio"/>	<input type="radio"/>

#### NEW QUESTION 191

- (Exam Topic 7)

A company is implementing Power BI to track sales.

Each of the company's regions has specific quarterly and yearly sales goals. You need to build a Power BI dashboard for various reporting requirements.

Which chart types should you use? To answer, drag the appropriate chart types to the correct requirements.

Each chart type may be used once, more than once, or not at all. You may need to drag the split bar between panes or scroll to view content.

NOTE: Each correct selection is worth one point.

Chart types	Requirement	Chart type
<div>Donut</div>	Show the quarterly sales total to date in relation to the sales goal.	<div></div>
<div>KPIs</div>	View the sales trend by month of the sales year to date for all regions.	<div></div>
<div>Line chart</div>	View the year-to-date sales as a percentage by region.	<div></div>
<div>Matrix</div>		

- A. Mastered  
B. Not Mastered

**Answer:** A

**Explanation:**

Box 1: KPIs

A Key Performance Indicator (KPI) is a visual cue that communicates the amount of progress made toward a measurable goal.

Box 2: Line chart

Line charts emphasize the overall shape of an entire series of values, usually over time. Box 3: Donut

Doughnut charts are similar to pie charts. They show the relationship of parts to a whole. The only difference is that the center is blank and allows space for a label or icon.

Reference:

<https://docs.microsoft.com/en-us/power-bi/visuals/power-bi-visualization-types-for-reports-and-q-and-a>

#### NEW QUESTION 195

- (Exam Topic 7)

A company is creating a canvas app to manage weekly status reports from users about projects.

Status reports must be created weekly. Users can enter project tasks with descriptions. Users can also add escalation requests for tasks that are late or at risk.

When a status report is submitted with an escalation request the app must automatically send a text message to the submitter's manager. A reminder must be sent at 8 PM on Sunday to everyone who has not yet submitted a status report for the previous week.

You need to identify the appropriate components to use in the solution.

What should you use? To answer, drag the appropriate implementation mechanisms to the correct requirements. Each implementation mechanism may be used once, more than once, or not at all. You may need to drag the split bar between panes or scroll to view content

NOTE: Each correct selection is worth one point



Implementation Mechanisms

Actions

Triggers

Conditions

Business process flows

Answer Area

Action

Automatically send a text message based on the report submission.

Automatically send a reminder at 8 PM based on a missing status report.

Implementation Mechanism

- A. Mastered  
B. Not Mastered

**Answer:** A

**Explanation:**

Implementation Mechanisms

Actions

Triggers

Conditions

Business process flows

Answer Area

Action

Automatically send a text message based on the report submission.

Automatically send a reminder at 8 PM based on a missing status report.

Implementation Mechanism

Triggers

Actions

#### NEW QUESTION 198

- (Exam Topic 7)

You test a business process flow in a sandbox environment.

When you complete testing, you must copy the business process flow to a production environment without bringing any data or other modifications with it.

You must meet the requirements. What should you do?

- A. Export the default solution.  
B. Export the form that contains the business process flow to a separate solution.  
C. Add the business process flow to a separate solutio  
D. Export the solution.  
E. Create a view and export the view.

**Answer:** B

#### NEW QUESTION 200

- (Exam Topic 7) You create a model-driven app. The app is ready to be shared.

You need to complete the process required to set the app up to be shared.

How should you complete the process for setting up the app to be shared? To answer, drag the appropriate setting to the correct drop targets. Each source may be used once, more than once, or not at all. You may need to drag the split bar between panes or scroll to view content.

NOTE: Each correct selection is worth one point.

Processes

Select an app from the Power Apps

Select the app and select a security

Select a user and choose a security

Select Share.

Answer Area

Step

Process

1

Process

2

Process

3

Process

4

Process

- A. Mastered  
B. Not Mastered

**Answer:** A

**Explanation:**

Reference:

<https://docs.microsoft.com/en-us/powerapps/maker/model-driven-apps/share-model-driven-app>

**NEW QUESTION 204**

- (Exam Topic 7)

A company is creating a chatbot to replace a frequently asked questions (FAQ) site

You must perform step-by-step testing for al scenarios that are part of a complex user interaction that includes multiple topics. Testers must be able to see the workflow while interacting with the chatbot.

You need to test the chatbot. What should you do?

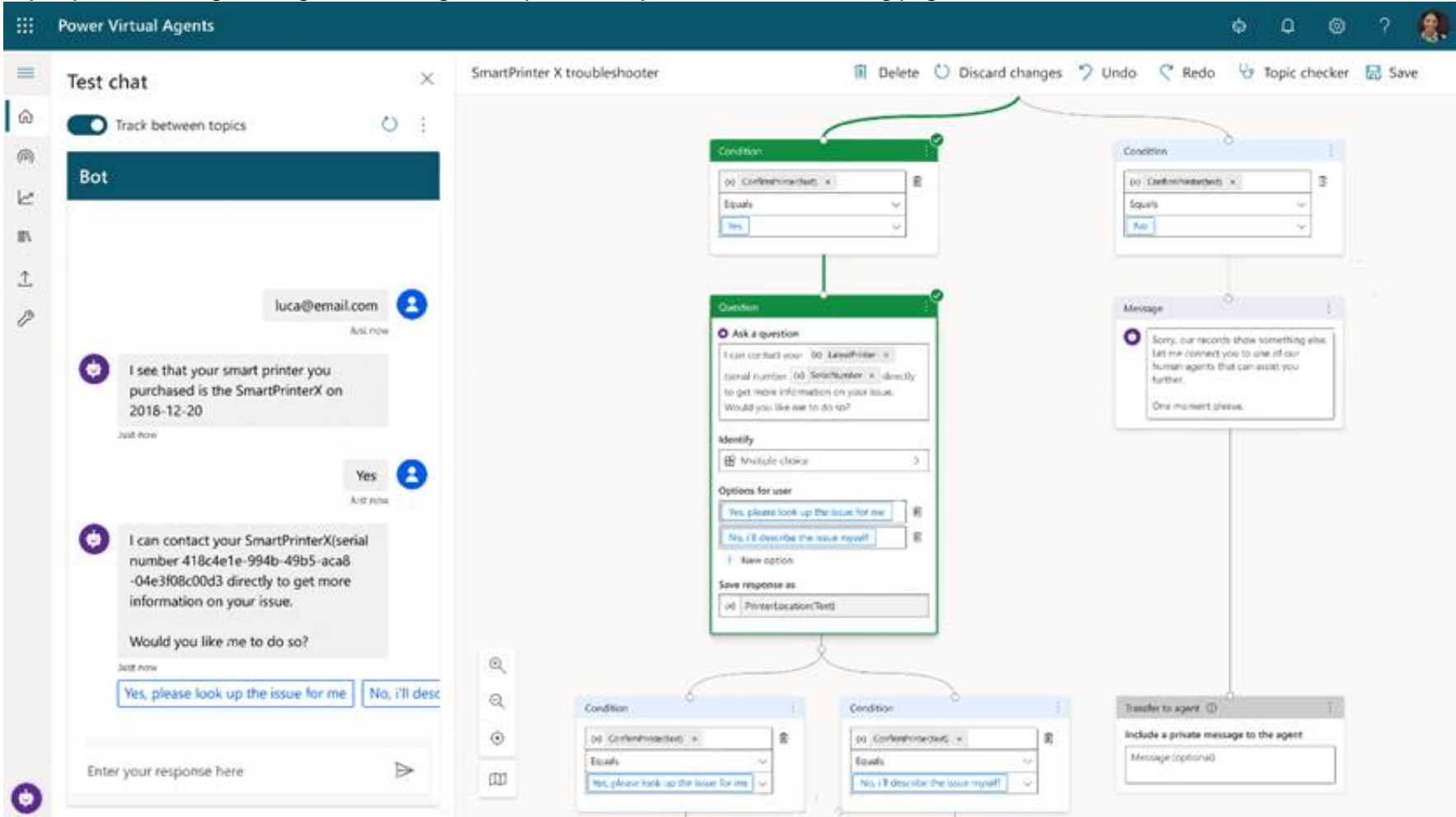
- A. Publish the chatbot and test it in the demo website.
- B. Use the chatbot designer to test the chatbot
- C. View analytics for a chatbot conversation.
- D. Publish the chatbot and test it in any channel

**Answer: B**

**Explanation:**

Test and maintain chatbots through an incredibly easy-to-use graphical interface. Recognize and act on dozens of common entities in the user’s conversation such as colors, currencies, ages, dates and times, or create your own, and store user information in variables and use them to branch or create complex conversations.

<https://powervirtualagentsblogcdn.azureedge.net/wp-content/uploads/2019/11/Tracking.png>



**NEW QUESTION 209**

- (Exam Topic 7)

For each of the following statements, select Yes if the statement is true. Otherwise, select No. NOTE: Each correct selection is worth one point.

Statements	Yes	No
Sharing a model-driven app with a user is the only security required for users to access the app.	<input type="radio"/>	<input type="radio"/>
You can change the order of the columns in a view once you have created and published a view.	<input type="radio"/>	<input type="radio"/>
System views must be shared for everyone to view them.	<input type="radio"/>	<input type="radio"/>

- A. Mastered
- B. Not Mastered

**Answer: A**

**Explanation:**

Yes, No, No

**NEW QUESTION 210**

- (Exam Topic 7)

You plan to use Power Automate to monitor what people are saying about your company's products. You store the feedback for research and development purposes.  
You need to recommend Power Automate components to use for the solution.  
To answer drag the appropriate components to the correct requirements. Each component may be used once, more than once, or not at all. You may need to drag the split bar between panes or scroll to view content.  
NOTE: Each correct selection is worth one point

Components	Requirement	Component
action	Retrieve the top five posts from your company's Facebook page.	Component
expression	Enter the resulting posts into the product database.	Component
service	Combine author and link fields into a single field.	Component
trigger	Run a flow every hour.	Component

- A. Mastered  
B. Not Mastered

Answer: A

Explanation:

Components	Requirement	Component
action	Retrieve the top five posts from your company's Facebook page.	action
expression	Enter the resulting posts into the product database.	action
service	Combine author and link fields into a single field.	expression
trigger	Run a flow every hour.	trigger

#### NEW QUESTION 215

- (Exam Topic 7)

You are creating a Power Automate flow.  
You need to retrieve data from several sources including Microsoft Excel, Azure Data lake, and GitHub.  
What should you use? To answer, drag the appropriate components to the correct data sources. Each component may be used once, more than once, or not at all.  
You may need to drag the split bar between panes or scroll to view content.  
NOTE: Each correct selection is worth one point

Components	Data source	Component
Connector	Microsoft Excel	
Expression	Azure Data Lake	
Formula	GitHub	

- A. Mastered  
B. Not Mastered

Answer: A

Explanation:

Box 1: Formula

Reading an Excel document retrieves the data from the document, allowing it to be processed and modified in flows.  
Read and extract data from an Excel document with the Read from Excel worksheet action.

Box 2: Connector

Azure Data Lake Store connector allows you to read and add data to an Azure Data Lake account. The Azure Data Lake connector is available for Power Automate.

Box 3: Expression Reference:

<https://docs.microsoft.com/en-us/learn/modules/pad-excel-automation/3-reading-excel-document> <https://docs.microsoft.com/en-us/connectors/azuredatalake/>

#### NEW QUESTION 219

- (Exam Topic 7)

You are using the Power BI service to view a visual on a report that has been shared with you. You need to add the visual to a dashboard as a tile. Which action should you perform?

- A. Copy  
B. Spotlight  
C. Export data  
D. Pin

Answer: D

**NEW QUESTION 224**

- (Exam Topic 7)

A company is using Power Automate to automate business processes. You need to run a flow when a user presses a button in an app. Which trigger type should you recommend?

- A. Power Apps
- B. for a selected row
- C. manually trigger a flow

**Answer:** A

**Explanation:**

Reference:

<https://docs.microsoft.com/en-us/powerapps/maker/canvas-apps/using-logic-flows>

**NEW QUESTION 227**

- (Exam Topic 7)

You are building Power BI visualizations for a team.

For each of the following statements, select Yes if the statement is true. Otherwise, select No. NOTE: Each correct selection is worth one point.

**Answer Area**

Statement	Yes	No
Power BI can only retrieve data from up to two different sources for each dashboard.	<input type="radio"/>	<input type="radio"/>
Power BI visualizations can be used in canvas apps and model driven apps.	<input type="radio"/>	<input type="radio"/>
Power BI can display charts and list boxes on dashboards.	<input type="radio"/>	<input type="radio"/>

- A. Mastered
- B. Not Mastered

**Answer:** A

**Explanation:**

Yes

Yes Yes

**NEW QUESTION 228**

- (Exam Topic 7)

instructions: For each of the following statements, select Yes if the statement is true. Otherwise, select No. NOTE: Each correct selection is worth one point.

**Answer Area**

Statements	Yes	No
A Microsoft Power Platform environment must contain a Microsoft Dataverse database.	<input type="radio"/>	<input type="radio"/>
An app created in an environment can only connect to the data sources that are deployed in the same environment.	<input type="radio"/>	<input type="radio"/>
Microsoft Dataverse for Teams environments are automatically created for all members of the team when you create a Microsoft Power Platform app in Microsoft Teams.	<input type="radio"/>	<input type="radio"/>

- A. Mastered
- B. Not Mastered

**Answer:** A

**Explanation:**

**Answer Area**

Statements	Yes	No
A Microsoft Power Platform environment must contain a Microsoft Dataverse database.	<input checked="" type="radio"/>	<input type="radio"/>
An app created in an environment can only connect to the data sources that are deployed in the same environment.	<input checked="" type="radio"/>	<input type="radio"/>
Microsoft Dataverse for Teams environments are automatically created for all members of the team when you create a Microsoft Power Platform app in Microsoft Teams.	<input checked="" type="radio"/>	<input type="radio"/>

**NEW QUESTION 232**

- (Exam Topic 7)

You are creating a canvas app to enable users to order tickets. You create an input field for users to input the number of tickets to order.

Users must order a maximum of four tickets and a minimum of two tickets. If a user enters a number except 2, 3, or 4, the input field must display in red. If a user enters the numbers 2, 3, or 4, the input field must display in green.

You need to color the input field based on the user input. What should you use?

- A. formula
- B. calculated column
- C. gallery
- D. connector



Answer: A

NEW QUESTION 233

- (Exam Topic 7)

For each of the following statements, select Yes if the statement is true, Otherwise, select No. NOTE: Each correct selection is worth one point.

Answer Area	
Statement	
Power Apps apps can run only on mobile devices.	<div><div>Yes</div><div>No</div></div>
Power Apps can run only with Dynamic 365 products.	<div><div>Yes</div><div>No</div></div>
If a user runs a Power Apps app that accesses information to which the user does not have access, the app grants the user permissions.	<div><div>Yes</div><div>No</div></div>

- A. Mastered
- B. Not Mastered

Answer: A

Explanation:

Answer Area	
Statement	
Power Apps apps can run only on mobile devices.	<div><div>Yes</div><div>No</div></div>
Power Apps can run only with Dynamic 365 products.	<div><div>Yes</div><div>No</div></div>
If a user runs a Power Apps app that accesses information to which the user does not have access, the app grants the user permissions.	<div><div>Yes</div><div>No</div></div>

NEW QUESTION 235

- (Exam Topic 7)

You are a sales manager for a large retail organization.

You are creating a Power Apps app that will display customer product purchase information from your old point-of-sale (POS) system and need to link those sales to the customer accounts and product sales in Dynamics 365 Commerce.

You need to use the appropriate component. What should you use?

- A. business process flow
- B. business rule
- C. Common Data Service
- D. entity metadata

Answer: C

NEW QUESTION 239

- (Exam Topic 7)

You want to create a Power Apps app that allows you to define a custom Sitemap. What should you do? To answer, select the appropriate options in the answer area.

Navigate to the Power Apps portal and create

a canvas app.

a model-driven app.

a portal app.

an app by using a template.

- A. Mastered
- B. Not Mastered

Answer: A

Explanation:

Reference:

<https://docs.microsoft.com/en-us/powerapps/powerapps-overview>

NEW QUESTION 242

- (Exam Topic 7)

You are building Power BI visualizations for a team.

For each of the following statements, select Yes if the statement is true. Otherwise, select No.

NOTE: Each correct selection is worth one point.

Statements	Yes	No
Power BI can only retrieve data from up to two different sources for each dashboard.	<input type="radio"/>	<input type="radio"/>
Power BI visualizations can be used in canvas apps and model driven apps.	<input type="radio"/>	<input type="radio"/>
Power BI can display charts and list boxes on dashboards.	<input type="radio"/>	<input type="radio"/>

- A. Mastered  
B. Not Mastered

Answer: A

Explanation:

Reference:  
<https://docs.microsoft.com/en-us/power-bi/visuals/power-bi-visualization-types-for-reports-and-q-and-a> <https://docs.microsoft.com/en-us/power-bi/visuals/power-bi-visualization-slicers>

NEW QUESTION 247

- (Exam Topic 7)  
A user is creating their first Power Apps canvas app.  
Which types of controls should you use for each scenario? To answer, select the appropriate options in the answer area.  
NOTE: Each correct selection is worth one point.

Scenario	Control
View the date, time, and location of upcoming internal meetings.	<div>Meeting-screen template Gallery List box</div>
Create a meeting request from within the app.	<div>Meeting-screen template Gallery List box</div>
Drill down into customer contact records in Dynamics 365 Sales to view a photo of a customer you are meeting.	<div>Image People-screen template Add picture</div>

- A. Mastered  
B. Not Mastered

Answer: A

Explanation:

Scenario	Control
View the date, time, and location of upcoming internal meetings.	<div>Meeting-screen template Gallery List box</div>
Create a meeting request from within the app.	<div>Meeting-screen template Gallery List box</div>
Drill down into customer contact records in Dynamics 365 Sales to view a photo of a customer you are meeting.	<div>Image People-screen template Add picture</div>

NEW QUESTION 250

- (Exam Topic 7)  
You plan to create a model-driven app for a company that sells plants and garden supplies. The app must meet the following requirements:  
• Automatically send email to a customer when a record is modified.  
• Ensure that all sales people follow the same steps when processing sales.  
You need to create Power Automate flows for the app.

Flow types	Requirement	Flow type
Button		
Automatic	Send email to customers.	Flow type
Scheduled		
Business Process	Ensure that salespeople follow the same steps.	Flow type

- A. Mastered  
B. Not Mastered

Answer: A

Explanation:

Flow types	Requirement	Flow type
Button		
Automatic	Send email to customers.	Automatic
Scheduled		
Business Process	Ensure that salespeople follow the same steps.	Business Process

#### NEW QUESTION 252

- (Exam Topic 7)

A company is implementing a customer service solution by using Dynamics 365 Customer Service. The company is extending the solution to meet additional business requirements.

The solution has the following requirements:

- Customers can log on to a secure website and view the progress of customer service tickets.
- Refund requests over a certain value can be automatically sent for managerial approval in Microsoft Teams.
- Create a custom page showing a gallery of pictures within the Dynamics 365 Customer Service app. You need to use Microsoft Power Platform technologies to implement the solution.

Which technology should you use? To answer, drag the appropriate technologies to the correct requirements. Each technology may be used once, more than once, or not at all. You may need to drag the split bar between panes or scroll to view content.

NOTE: Each correct selection is worth one point.

Technologies	Requirement	Technology
Power Apps portals	Customers can log on to a secure website and view the progress of customer service tickets.	
Power Automate	Refund requests over a certain value can be automatically sent for managerial approval in Microsoft Teams.	
Canvas apps	Create a custom page showing a gallery of pictures within the Dynamics 365 Customer Service app.	

- A. Mastered  
B. Not Mastered

Answer: A

Explanation:

Technologies	Requirement	Technology
Power Apps portals	Customers can log on to a secure website and view the progress of customer service tickets.	Power Apps portals
Power Automate	Refund requests over a certain value can be automatically sent for managerial approval in Microsoft Teams.	Power Automate
Canvas apps	Create a custom page showing a gallery of pictures within the Dynamics 365 Customer Service app.	Canvas apps

#### NEW QUESTION 253

- (Exam Topic 7)

A company plans to use Power Automate to automate tasks.

Match each flow type to its description. To answer, drag the appropriate flow type from the column on the left to its description on the right. Each option may be used once, more than once, or not at all.

NOTE: Each correct match is worth one point.



Flow types	Answer Area	Description	Flow type
automated		a flow that runs after it is triggered by an event	Flow type
business process		a flow that guides a user through a set of tasks	Flow type
scheduled		a flow that runs after a specified number of days	Flow type
instant		a flow that allows you to start tasks on demand	Flow type

- A. Mastered
- B. Not Mastered

Answer: A

Explanation:

Flow types	Answer Area	Description	Flow type
automated		a flow that runs after it is triggered by an event	automated
business process		a flow that guides a user through a set of tasks	business process
scheduled		a flow that runs after a specified number of days	scheduled
instant		a flow that allows you to start tasks on demand	instant

NEW QUESTION 254

- (Exam Topic 7)

A company is evaluating ways that they can implement AI Builder.  
For which two scenarios can you use AI Builder? Each correct selection presents a complete solution. NOTE: Each correct selection is worth one point.

- A. Send emails to all ai users who subscribe to a service.
- B. Synchronize data from an external database.
- C. Collect data from several data sources and display a dashboard that shows trending data.
- D. Interpret images and perform an action on the image.
- E. Detect patterns in data and predict outcomes

Answer: BD

NEW QUESTION 255

- (Exam Topic 7)

A company uses a model-driven app. You add several columns to a form.  
Users state the new columns do not appear on the form. You need to fix the issue.  
What should you do?

- A. Ensure columns are in one section of the form only.
- B. Copy the form and rename it.
- C. Publish the form.
- D. Create a Power Automate flow.
- E. Create a business rule.

Answer: E

NEW QUESTION 256

- (Exam Topic 7)

For each of the following statements, select Yes if the statement is true. Otherwise, select No. NOTE: Each correct selection is worth one point.

Statement	Yes	No
Sharing a model-driven app and sharing a canvas app both send an email with the link to the app to the users.	<input type="radio"/>	<input type="radio"/>
Administrators assign Power Platform security roles and permissions identically for canvas apps, model-driven apps, and shared apps.	<input type="radio"/>	<input type="radio"/>
You must publish both personal and system views before a user may consume them.	<input type="radio"/>	<input type="radio"/>

- A. Mastered
- B. Not Mastered

Answer: A



**Explanation:**  
Yes, No, No

**NEW QUESTION 261**

- (Exam Topic 7)  
You are a retail director for a large clothing company. Each week you use the corporate YouTube channel to create a video that highlights new initiatives, and goals for retail operations.  
You need to design a Power Apps app that streams the videos to internal users.  
Which objects should you use? To answer, select the appropriate options in the answer area.  
NOTE: Each correct selection is worth one point.

Action	Option
Implement the Power Apps app.	<div><div></div><div>Canvas</div><div>Model-driven</div><div>Portal</div></div>
Use drag and drop to add a video to the app.	<div><div></div><div>View</div><div>Connector</div><div>Control</div></div>
Apply consistent company colors to the app.	<div><div></div><div>Unified Interface</div><div>Control</div><div>Theme</div><div>Template</div></div>

- A. Mastered
- B. Not Mastered

**Answer:** A

**Explanation:**  
Reference:  
<https://powerapps.microsoft.com/en-us/blog/microsoft-stream-videos-and-channels-in-canvas-apps/> <https://docs.microsoft.com/en-us/powerapps/maker/model-driven-apps/create-themes-organization-branding> <https://docs.microsoft.com/en-us/powerapps/maker/canvas-apps/controls/control-stream-video>

**NEW QUESTION 263**

- (Exam Topic 7)  
You create a model-driven app for a department.  
You need to make the model-driven app available to other department members. Which two methods should you use? Each correct answer presents a complete solution.  
NOTE: Each correct selection is worth one point.

- A. Publish the app to AppSource.
- B. Send the application's Web URL to other team members by email.
- C. Deploy the application to other user's instances through PowerShell.
- D. Use the Share feature in the Power Apps designer.

**Answer:** AD

**NEW QUESTION 264**

- (Exam Topic 7)  
A company plans to move an on-premises customer service data management system to a cloud-managed solution.  
The customer service application must be replaced by a model-driven application. The company uses Microsoft SQL Server Integration Services (SSIS) packages to move data from the on-premises database system to a third-party enterprise resource planning (ERP) system.  
You need to replace the SSIS packages for data transfer.  
What should the company use in place of the packages to move the data?

- A. Microsoft Azure Data Lake
- B. Power Virtual Agents
- C. Data Migration Framework
- D. Power Platform connector

**Answer:** C

**NEW QUESTION 268**

- (Exam Topic 7)

You overwrite a Power Automate flow by editing the definition and saving the changes. You need to be able to revert a flow to the current state. Which two options can you use? Each correct answer presents a complete solution. NOTE: Each correct selection is worth one point.

- A. Save As
- B. Rename
- C. Export
- D. Share

**Answer:** AC

#### **NEW QUESTION 269**

.....

## Thank You for Trying Our Product

\* 100% Pass or Money Back

All our products come with a 90-day Money Back Guarantee.

\* One year free update

You can enjoy free update one year. 24x7 online support.

\* Trusted by Millions

We currently serve more than 30,000,000 customers.

\* Shop Securely

All transactions are protected by VeriSign!

**100% Pass Your PL-900 Exam with Our Prep Materials Via below:**

<https://www.certleader.com/PL-900-dumps.html>