



Microsoft

Exam Questions AI-102

Designing and Implementing an Azure AI Solution

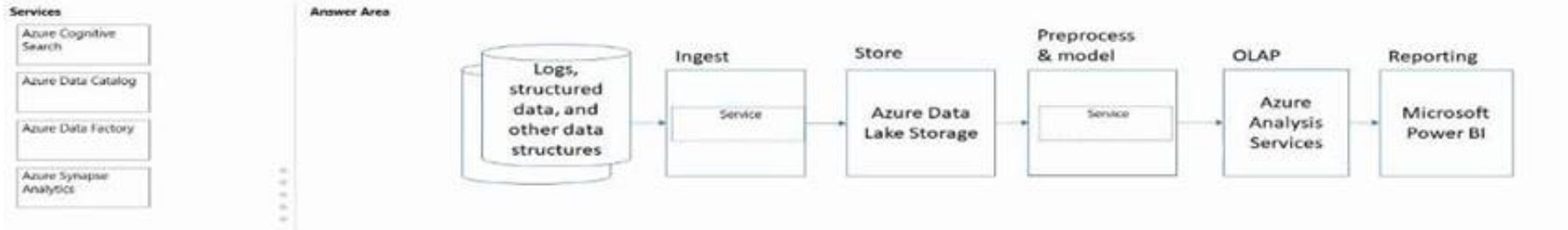
NEW QUESTION 1

DRAG DROP - (Topic 3)

Match the Azure services to the appropriate locations in the architecture.

To answer, drag the appropriate service from the column on the left to its location on the right. Each service may be used once, more than once, or not at all.

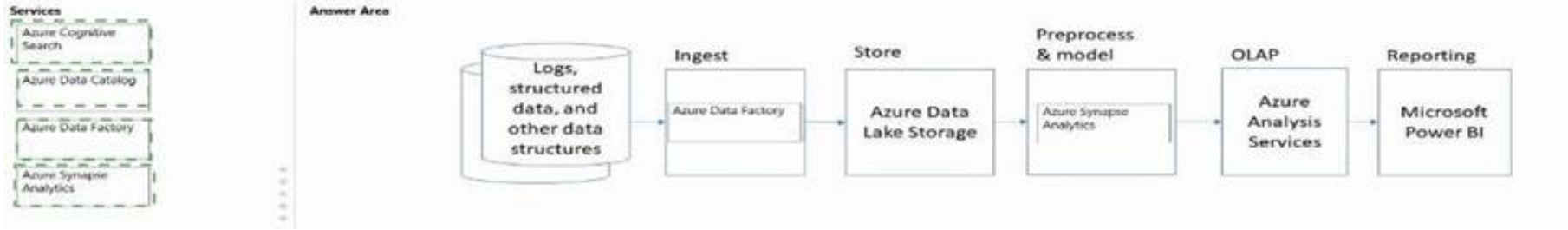
NOTE: Each correct match is worth one point.



- A. Mastered
- B. Not Mastered

Answer: A

Explanation:



NEW QUESTION 2

HOTSPOT - (Topic 3)

For each of the following statements, select Yes if the statement is true. Otherwise, select No.

NOTE: Each correct selection is worth one point.

Statements	Yes	No
Platform as a service (PaaS) database offerings in Azure require less setup and configuration effort than infrastructure as a service (IaaS) database offerings.	<input type="radio"/>	<input type="radio"/>
Platform as a service (PaaS) database offerings in Azure provide end users with the ability to control and update the operating system version.	<input type="radio"/>	<input type="radio"/>
All relational and non-relational platform as a service (PaaS) database offerings in Azure can be paused to reduce costs.	<input type="radio"/>	<input type="radio"/>

- A. Mastered
- B. Not Mastered

Answer: A

Explanation:

Statements	Yes	No
Platform as a service (PaaS) database offerings in Azure require less setup and configuration effort than infrastructure as a service (IaaS) database offerings.	<input checked="" type="radio"/>	<input type="radio"/>
Platform as a service (PaaS) database offerings in Azure provide end users with the ability to control and update the operating system version.	<input type="radio"/>	<input checked="" type="radio"/>
All relational and non-relational platform as a service (PaaS) database offerings in Azure can be paused to reduce costs.	<input type="radio"/>	<input checked="" type="radio"/>

NEW QUESTION 3

- (Topic 3)

You have an Azure IoT hub that receives series data from machinery. You need to build an app that will perform the following actions:

- Perform anomaly detection across multiple correlated sensors
- Identify the root cause of process stops.
- Send incident alerts

The solution must minimize development time. Which Azure service should you use?

- A. Azure Metrics Advisor
- B. Form Recognizer
- C. Azure Machine teaming
- D. Anomaly Detector

Answer: D

NEW QUESTION 4

- (Topic 3)

Your company uses an Azure Cognitive Services solution to detect faces in uploaded images. The method to detect the faces uses the following code.

```
static async Task DetectFaces(string imagePath)
{
    HttpClient client = new HttpClient();
    DefaultRequestHeaders.Add("Ocp-Apim-Subscription-Key", subscriptionKey);
    string requestParameter = "detectionModel=detection_01&returnFaceId=true&returnFaceLandmarks=false";
    string uri = endpoint + "/face/v1.0/detect?" + requestParameters;
    HttpResponseMessage response;
    byte[] byteData = GetImagesAsByteArray(imageFilePath);
    using (ByteArrayContent content = new ByteArrayContent(byteData))
    {
        Headers.ContentType = new MediaTypeHeaderValue("application/octet-stream");
        response = await PostAsync(uri, content);
        string contentString = await Content.ReadAsStringAsync();
        ProcessDetection(contentString);
    }
}
```

You discover that the solution frequently fails to detect faces in blurred images and in images that contain sideways faces.

- A. Use a different version of the Face API.
- B. Use the Computer Vision service instead of the Face service.
- C. Use the Identify method instead of the Detect method.
- D. Change the detection model. You need to increase the likelihood that the solution can detect faces in blurred images and images that contain sideways faces. What should you do?

Answer: D

Explanation:

Evaluate different models.

The best way to compare the performances of the detection models is to use them on a sample dataset. We recommend calling the Face - Detect API on a variety of images, especially images of many faces or of faces that are difficult to see, using each detection model. Pay attention to the number of faces that each model returns.

Reference:

<https://docs.microsoft.com/en-us/azure/cognitive-services/face/face-api-how-to-topics/specify-detection-model>

NEW QUESTION 5

HOTSPOT - (Topic 3)

You are building content for a video training solution.

You need to create narration to accompany the video content. The solution must use Custom Neural Voice.

What should you use to create a custom neural voice, and which service should you use to generate the narration? To answer, select the appropriate options in the answer area.

NOTE: Each correct answer is worth one point.

Answer Area

Custom neural voice:

Narration:

Narration:

- A. Mastered
- B. Not Mastered

Answer: A

Explanation:

Answer Area

Custom neural voice:

Narration:

Narration:

NEW QUESTION 6

HOTSPOT - (Topic 3)

Select the answer that correctly completes the sentence.

Answer Area

Relational data is stored in

a file system as unstructured data.
a hierarchal folder structure.
a tabular form of rows and columns.
comma-separated value (CSV) files.

- A. Mastered
- B. Not Mastered

Answer: A

Explanation:

Answer Area

Relational data is stored in

a file system as unstructured data.
a hierarchal folder structure.
a tabular form of rows and columns.
comma-separated value (CSV) files.

NEW QUESTION 7

- (Topic 3)

Note: This question is part of a series of questions that present the same scenario. Each question in the series contains a unique solution that might meet the stated goals. Some question sets might have more than one correct solution, while others might not have a correct solution.
After you answer a question in this section, you will NOT be able to return to it. As a result, these questions will not appear in the review screen.
You create a web app named app1 that runs on an Azure virtual machine named vm1. Vm1 is on an Azure virtual network named vnet1.
You plan to create a new Azure Cognitive Search service named service1.
You need to ensure that app1 can connect directly to service1 without routing traffic over the public internet.
Solution: You deploy service1 and a public endpoint, and you configure an IP firewall rule. Does this meet the goal?

- A. Yes
- B. No

Answer: B

Explanation:

Reference:
<https://docs.microsoft.com/en-us/azure/private-link/private-link-overview>

NEW QUESTION 8

HOTSPOT - (Topic 3)

You are building a chatbot.
You need to use the Content Moderator service to identify messages that contain sexually explicit language.
Which section in the response from the service will contain the category score, and which category will be assigned to the message? To answer, select the appropriate options in the answer area,
NOTE: Each correct selection is worth one point.

Answer Area

Section:

Classification
Classification
pii
Terms

Category:

3
1
2
3

- A. Mastered
- B. Not Mastered

Answer: A

Explanation:

Answer Area

Section:

Classification
Classification
pii
Terms

Category:

3
1
2
3 1

NEW QUESTION 9

- (Topic 3)

You are building a chatbot for a travel agent. The chatbot will use the Azure OpenAI GPT 3.5 model and will be used to make travel reservations. You need to maximize the accuracy of the responses from the chatbot. What should you do?

- A. Configure the model to include data from the travel agent's database.
- B. Set the Top P parameter for the model to 0.
- C. Set the Temperature parameter for the model to 0.
- D. Modify the system message used by the model to specify that the answers must be accurate.

Answer: A

NEW QUESTION 10

- (Topic 3)

Note: This question is part of a series of questions that present the same scenario. Each question in the series contains a unique solution that might meet the stated goals. Some question sets might have more than one correct solution, while others might not have a correct solution.

After you answer a question in this section, you will NOT be able to return to it. As a result, these questions will not appear in the review screen.

You have an Azure Cognitive Search service.

During the past 12 months, query volume steadily increased.

You discover that some search query requests to the Cognitive Search service are being throttled.

You need to reduce the likelihood that search query requests are throttled. Solution: You enable customer-managed key (CMK) encryption.

Does this meet the goal?

- A. Yes
- B. No

Answer: B

Explanation:

Customer-managed key (CMK) encryption does not affect throttling.

Instead, you could migrate to a Cognitive Search service that uses a higher tier.

Note: A simple fix to most throttling issues is to throw more resources at the search service (typically replicas for query-based throttling, or partitions for indexing-based throttling). However, increasing replicas or partitions adds cost, which is why it is important to know the reason why throttling is occurring at all.

Reference:

<https://docs.microsoft.com/en-us/azure/search/search-performance-analysis>

NEW QUESTION 10

DRAG DROP - (Topic 3)

You plan to use containerized versions of the Anomaly Detector API on local devices for testing and in on-premises datacenters.

You need to ensure that the containerized deployments meet the following requirements:

? Prevent billing and API information from being stored in the command-line histories of the devices that run the container.

? Control access to the container images by using Azure role-based access control (Azure RBAC).

Which four actions should you perform in sequence? To answer, move the appropriate actions from the list of actions to the answer area and arrange them in the correct order. (Choose four.)

NOTE: More than one order of answer choices is correct. You will receive credit for any of the correct orders you select.

Actions	Answer Area
Create a custom Dockerfile.	
Pull the Anomaly Detector container image.	
Distribute a docker run script.	
Push the image to an Azure container registry.	
Build the image.	
Push the image to Docker Hub.	

- A. Mastered
- B. Not Mastered

Answer: A

Explanation:

Step 1: Pull the Anomaly Detector container image. Step 2: Create a custom Dockerfile

Step 3: Build the image

Step 4: Push the image to an Azure container registry.

<https://docs.microsoft.com/en-us/azure/cognitive-services/containers/container-reuse-recipe>

NEW QUESTION 12

- (Topic 3)

You are designing a conversational interface for an app that will be used to make vacation requests. The interface must gather the following data:

- The start date of a vacation
- The end date of a vacation
- The amount of required paid time off

The solution must minimize dialog complexity. Which type of dialog should you use?

- A. Skill
- B. waterfall
- C. adaptive
- D. component

Answer: D

NEW QUESTION 17

- (Topic 3)

Your company needs to implement a relational database in Azure. The solution must minimize ongoing maintenance. Which Azure service should you use?

- A. SQL Server on Azure Virtual Machines
- B. Azure SOL Database
- C. Azure HDInsight
- D. Azure Cosmos DB

Answer: B

NEW QUESTION 22

HOTSPOT - (Topic 3)

For each of the following statements, select Yes if the statement is tine. Otherwise, select No. NOTE: Each correct selection is worth one point.

Answer Area

Statements	Yes	No
Stream processing has access to the most recent data received or data within a rolling time window.	<input type="radio"/>	<input type="radio"/>
Batch processing must occur immediately and have latency in the order of seconds or milliseconds.	<input type="radio"/>	<input type="radio"/>
Stream processing is used for simple response functions, aggregates, or calculations such as rolling averages.	<input type="radio"/>	<input type="radio"/>

- A. Mastered
- B. Not Mastered

Answer: A

Explanation:

Answer Area

Statements	Yes	No
Stream processing has access to the most recent data received or data within a rolling time window.	<input checked="" type="radio"/>	<input type="radio"/>
Batch processing must occur immediately and have latency in the order of seconds or milliseconds.	<input checked="" type="radio"/>	<input type="radio"/>
Stream processing is used for simple response functions, aggregates, or calculations such as rolling averages.	<input type="radio"/>	<input checked="" type="radio"/>

NEW QUESTION 25

DRAG DROP - (Topic 3)

You have an app that manages feedback.

You need to ensure that the app can detect negative comments by using the Sentiment Analysis API in Azure Cognitive Service for Language. The solution must ensure that the managed feedback remains on your company's internal network.

Which three actions should you perform in sequence? To answer, move the appropriate actions from the list of actions to the answer area and arrange them in the correct order.

NOTE: More than one order of answer choices is correct You will receive credit for any of the correct orders you select.

Actions

Answer Area

Provision the Language service resource in Azure.

Deploy a Docker container to an Azure container instance.

Deploy a Docker container to an on-premises server.

Identify the Language service endpoint URL and query the prediction endpoint.

Run the container and query the prediction endpoint.

>

<

↑

↓

- A. Mastered
- B. Not Mastered

Answer: A

Explanation:

? Provision the Language service resource in Azure.
? Deploy a Docker container to an on-premises server.
? Run the container and query the prediction endpoint.
? According to the Microsoft documentation, the Language service is a cloud-based service that provides various natural language processing features, such as sentiment analysis, key phrase extraction, named entity recognition, etc. You can provision the Language service resource in Azure by following the steps in Create a Language resource. You will need to provide a name, a subscription, a resource group, a region, and a pricing tier for your resource. You will also get a

key and an endpoint for your resource, which you will use to authenticate your requests to the Language service API.

? According to the Microsoft documentation, you can also use the Language service as a container on your own premises or in another cloud. This option gives you more control over your data and network, and allows you to use the Language service without an internet connection. You can deploy a Docker container to an on-premises server by following the steps in Deploy Language containers. You will need to have Docker installed on your server, pull the container image from the Microsoft Container Registry, and run the container with the appropriate parameters. You will also need to activate your container with your key and endpoint from your Azure resource.

? According to the Microsoft documentation, once you have deployed and activated your container, you can run it and query the prediction endpoint to get sentiment analysis results. The prediction endpoint is a local URL that follows this format: `http://<container IP address>:<port>/text/analytics/v3.1-preview.4/sentiment`. You can send HTTP POST requests to this endpoint with your text input in JSON format, and receive JSON responses with sentiment labels and scores for each document and sentence in your input.

NEW QUESTION 26

- (Topic 3)

Note: This question is part of a series of questions that present the same scenario. Each question in the series contains a unique solution that might meet the stated goals. Some question sets might have more than one correct solution, while others might not have a correct solution.

After you answer a question in this section, you will NOT be able to return to it. As a result, these questions will not appear in the review screen.

You build a language model by using a Language Understanding service. The language model is used to search for information on a contact list by using an intent named FindContact.

A conversational expert provides you with the following list of phrases to use for training.

Find contacts in London. Who do I know in Seattle? Search for contacts in Ukraine.

You need to implement the phrase list in Language Understanding. Solution: You create a new intent for location.

Does this meet the goal?

A. Yes

B. No

Answer: A

Explanation:

<https://docs.microsoft.com/en-us/azure/cognitive-services/luis/luis-concept-intent>

NEW QUESTION 28

HOTSPOT - (Topic 3)

You are developing an application that includes language translation.

The application will translate text retrieved by using a function named `getTextToBeTranslated`. The text can be in one of many languages. The content of the text must remain within the Americas Azure geography.

You need to develop code to translate the text to a single language.

How should you complete the code? To answer, select the appropriate options in the answer area.

NOTE: Each correct selection is worth one point.

```

* * *
var endpoint = 
    &quot;https://api.cognitive.microsofttranslator.com/translate&quot;;
    &quot;https://api.cognitive.microsofttranslator.com/transliterate&quot;;
    &quot;https://api-apc.cognitive.microsofttranslator.com/detect&quot;;
    &quot;https://api-nam.cognitive.microsofttranslator.com/detect&quot;;
    &quot;https://api-nam.cognitive.microsofttranslator.com/translate&quot;;
;

var apiKey = "FF956C68883B21B38691ABD200A4C606";
var text = getTextToBeTranslated();
var body = '[{"Text":"' + text + '"}]';
var client = new HttpClient();
client.DefaultRequestHeaders.Add("Ocp-Apim-Subscription-Key", apiKey);


    var uri = endpoint + &quot;?from=en&quot;;
    var uri = endpoint + &quot;?suggestedFrom=en&quot;;
    var uri = endpoint + &quot;?to=en&quot;;


HttpResponseMessage response;
var content = new StringContent(body, Encoding.UTF8, "application/json");
var response = await client.PutAsync(uri, content);
* * *

```

A. Mastered

B. Not Mastered

Answer: A

Explanation:


```
...
var endpoint = 

&quot;https://api.cognitive.microsofttranslator.com/translate&quot;;
    &quot;https://api.cognitive.microsofttranslator.com/transliterate&quot;;
    &quot;https://api-apc.cognitive.microsofttranslator.com/detect&quot;;
    &quot;https://api-nam.cognitive.microsofttranslator.com/detect&quot;;
    &quot;https://api-nam.cognitive.microsofttranslator.com/translate&quot;;

;

var apiKey = "FF956C68B83B21B38691ABD200A4C606";
var text = getTextToBeTranslated();
var body = '[{"Text":"' + text + '"}]';
var client = new HttpClient();
client.DefaultRequestHeaders.Add("Ocp-Apim-Subscription-Key", apiKey);



var uri = endpoint + &quot;?from=en&quot;;
    var uri = endpoint + &quot;?suggestedFrom=en&quot;;
    var uri = endpoint + &quot;?to=en&quot;;



HttpResponseMessage response;
var content = new StringContent(body, Encoding.UTF8, "application/json");
var response = await client.PutAsync(uri, content);
...
```

NEW QUESTION 33

HOTSPOT - (Topic 3)

You are developing a text processing solution. You have the function shown below.

```
static void GetKeywords(TextAnalyticsClient textAnalyticsClient, string text)
{
    var response = textAnalyticsClient.RecognizeEntities (text);
    Console.WriteLine("Key words:");

    foreach (CategorizedEntity entity in response.Value)
    {
        Console.WriteLine($"{entity.Text}");
    }
}
```

For the second argument, you call the function and specify the following string. Our tour of Paris included a visit to the Eiffel Tower.
For each of the following statements, select Yes if the statement is true. Otherwise, select No.
NOTE: Each correct selection is worth one point.

Answer Area

Statements	Yes	No
The output will include the following words: our and included.	<input type="radio"/>	<input type="radio"/>
The output will include the following words: Paris, Eiffel, and Tower.	<input type="radio"/>	<input type="radio"/>
The function will output all the key phrases from the input string to the console.	<input type="radio"/>	<input type="radio"/>

- A. Mastered
- B. Not Mastered

Answer: A

Explanation:

Answer Area

Statements	Yes	No
The output will include the following words: our and included.	<input checked="" type="radio"/>	<input type="radio"/>
The output will include the following words: Paris, Eiffel, and Tower.	<input type="radio"/>	<input checked="" type="radio"/>
The function will output all the key phrases from the input string to the console.	<input type="radio"/>	<input checked="" type="radio"/>

NEW QUESTION 38

DRAG DROP - (Topic 3)

You have a collection of Microsoft Word documents and PowerPoint presentations in German.

You need to create a solution to translate the file to French. The solution must meet the following requirements:

- * Preserve the original formatting of the files.
- * Support the use of a custom glossary.

You create a blob container for German files and a blob container for French files. You upload the original files to the container for German files.

Which three actions should you perform in sequence from the list of actions to the answer area and arrange them in the correct order.

Actions

Perform an asynchronous translation by using the list of files to be translated.

Upload a glossary file to the container for German files.

Upload a glossary file to the container for French files.

Generate a list of files to be translated.

Define a document translation specification that has a French target.

Perform an asynchronous translation by using the document translation specification.

>

<

Answer Area

↑

↓

- A. Mastered
B. Not Mastered

Answer: A

Explanation:

Actions

Perform an asynchronous translation by using the list of files to be translated.

Upload a glossary file to the container for German files.

Upload a glossary file to the container for French files.

Generate a list of files to be translated.

Define a document translation specification that has a French target.

Perform an asynchronous translation by using the document translation specification.

>

<

Answer Area

Generate a list of files to be translated.

Define a document translation specification that has a French target.

Perform an asynchronous translation by using the document translation specification.

→

→

NEW QUESTION 40

- (Topic 3)

You are building an app that will use the Azure Video Indexer service. You plan to train a language model to recognize industry-specific terms. You need to upload a file that contains the industry-specific terms. Which file format should you use?

- A. PDF
B. XML
C. TXT
D. XLS

Answer: C

NEW QUESTION 45

- (Topic 3)

You are building an AI solution that will use Sentiment Analysis results from surveys to calculate bonuses for customer service staff. You need to ensure that the solution meets the Microsoft responsible AI principles. What should you do?

- A. Add a human review and approval step before making decisions that affect the staffs financial situation
B. Include the Sentiment Analysis results when surveys return a low confidence score.
C. Use all the surveys, including surveys by customers who requested that their account be deleted and their data be removed.
D. Publish the raw survey data to a central location and provide the staff with access to the location.

Answer: A

NEW QUESTION 50

HOTSPOT - (Topic 3)

You are developing an application that includes language translation.

The application will translate text retrieved by using a function named `get_text_to_be_translated`. The text can be in one of many languages. The content of the text must remain within the Americas Azure geography.

You need to develop code to translate the text to a single language.

How should you complete the code? To answer, select the appropriate options in the answer area.

NOTE: Each correct selection is worth one point.

Answer Area

```
...
api_key = "FF956C68B83B21838691A8D200A4C606"
text = get_text_to_be_translated()
headers = {
    'Content-Type': 'application/json',
    'Ocp-Apim-Subscription-Key': api_key
}
body = {
    'Text': text
}
conn = httplib.HTTPSConnection
conn.request("POST",
response = conn.getresponse()
    conn.request("POST",
        response = conn.getrespons
        response_data = response.r
...
("api.cognitive.microsofttranslator.com")
("api-apc.cognitive.microsofttranslator.com")
("api-nam.cognitive.microsofttranslator.com")
"/translate?from=en"
"/translate?suggestedFrom=en"
"/translate?to=en"
"/detect?to=en"
"/detect?from=en"
```

- A. Mastered
- B. Not Mastered

Answer: A

Explanation:

Answer Area

```
...
api_key = "FF956C68B83B21838691A8D200A4C606"
text = get_text_to_be_translated()
headers = {
    'Content-Type': 'application/json',
    'Ocp-Apim-Subscription-Key': api_key
}
body = {
    'Text': text
}
conn = httplib.HTTPSConnection
conn.request("POST",
response = conn.getresponse()
    conn.request("POST",
        response = conn.getrespons
        response_data = response.r
...
("api.cognitive.microsofttranslator.com")
("api-apc.cognitive.microsofttranslator.com")
("api-nam.cognitive.microsofttranslator.com")
"/translate?from=en"
"/translate?suggestedFrom=en"
"/translate?to=en"
"/detect?to=en"
"/detect?from=en"
```

NEW QUESTION 55

- (Topic 3)
You have an Azure subscription that contains a Language service resource named ta1 and a virtual network named vnet1. You need to ensure that only resources in vnet1 can access ta1. What should you configure?

- A. a network security group (NSG) for vnet1
- B. Azure Firewall for vnet1
- C. the virtual network settings for ta 1
- D. a Language service container for ta1

Answer: C

NEW QUESTION 58

DRAG DROP - (Topic 3)
You are developing an application that will recognize faults in components produced on a factory production line. The components are specific to your business. You need to use the Custom Vision API to help detect common faults. Which three actions should you perform in sequence? To answer, move the appropriate actions from the list of actions to the answer area and arrange them in the correct order.

Actions

Train the classifier model.

Upload and tag images.

Initialize the training dataset.

Train the object detection model.

Create a project.

Answer Area

⬅️

➡️

⬆️

⬆️

- A. Mastered

B. Not Mastered

Answer: A

Explanation:

Step 1: Create a project Create a new project.

Step 2: Upload and tag the images

Choose training images. Then upload and tag the images.

Step 3: Train the classifier model. Train the classifier

NEW QUESTION 62

- (Topic 3)

You have a Language Understanding resource named lu1. You build and deploy an Azure bot named bot1 that uses lu1.

You need to ensure that bot1 adheres to the Microsoft responsible AI principle of inclusiveness.

How should you extend bot1?

A. Implement authentication for bot1.

B. Enable active learning for lu1.

C. Host lu1 in a container.

D. Add Direct Line Speech to bot1.

Answer: D

Explanation:

Inclusiveness: AI systems should empower everyone and engage people.

Direct Line Speech is a robust, end-to-end solution for creating a flexible, extensible voice assistant. It is powered by the Bot Framework and its Direct Line Speech channel, that is optimized for voice-in, voice-out interaction with bots.

Reference:

<https://docs.microsoft.com/en-us/azure/cognitive-services/speech-service/direct-line-speech>

NEW QUESTION 65

- (Topic 3)

You are developing a monitoring system that will analyze engine sensor data, such as rotation speed, angle, temperature, and pressure. The system must generate an alert in response to atypical values.

What should you include in the solution?

A. Application Insights in Azure Monitor

B. metric alerts in Azure Monitor

C. Multivariate Anomaly Detection

D. Univariate Anomaly Detection

Answer: C

NEW QUESTION 66

- (Topic 3)

You deploy a web app that is used as a management portal for indexing in Azure Cognitive Search. The app is configured to use the primary admin key.

During a security review, you discover unauthorized changes to the search index. You suspect that the primary access key is compromised.

You need to prevent unauthorized access to the index management endpoint. The solution must minimize downtime.

What should you do next?

A. Regenerate the primary admin key, change the app to use the secondary admin key, and then regenerate the secondary admin key.

B. Change the app to use a query key, and then regenerate the primary admin key and the secondary admin key.

C. Regenerate the secondary admin key, change the app to use the secondary admin key, and then regenerate the primary key.

D. Add a new query key, change the app to use the new query key, and then delete all the unused query keys.

Answer: C

NEW QUESTION 71

DRAG DROP - (Topic 3)

You have a Docker host named Host1 that contains a container base image.

You have an Azure subscription that contains a custom speech-to-text model named model1.

You need to run model1 on Host1.

Which three actions should you perform in sequence? To answer, move the appropriate actions from the list of actions to the answer area and arrange them in the correct order.

Actions	Answer Area
Configure disk logging.	
Export model1 to Host1.	
Request approval to run the container.	
Retrain the model.	
Run the container.	

Navigation arrows: > < (between Actions and Answer Area) and ^ v (within Answer Area)

A. Mastered

B. Not Mastered

Answer: A

Explanation:

According to the course AI-102T00: Designing and Implementing a Microsoft Azure AI Solution¹, the correct sequence of actions to run model1 on Host1 is:

- ? Export model1 to Host1
- ? Run the container
- ? Configure disk logging

The explanation and references are as follows:

? Export model1 to Host1: This step is required to deploy the custom speech-to-text model to the Docker host. You can use the Azure portal or the Azure CLI to export the model as a container image².

? Run the container: This step is required to start the container and run the model on the Docker host. You can use the Docker CLI to run the container image³.

? Configure disk logging: This step is optional but recommended to monitor the performance and health of the container. You can use the Docker CLI to configure disk logging for the container⁴.

NEW QUESTION 75

HOTSPOT - (Topic 3)

You have an Azure subscription that has the following configurations:

- Subscription ID: 8d3591aa-96b8-4737-ad09-00f9b1ed35ad
- Tenant ID: 3edfe572-cb54-3ced-ae12-c5c177f39a12

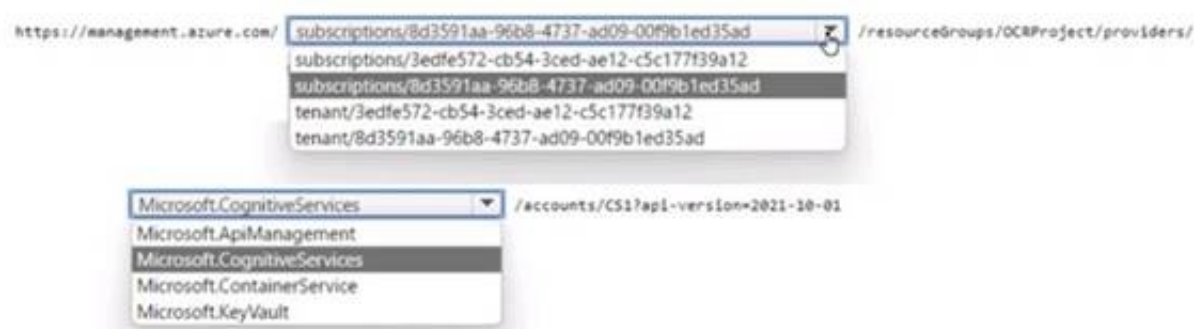
You plan to create a resource that will perform sentiment analysis and optical character recognition (OCR).

You need to use an HTTP request to create the resource in the subscription. The solution must use a single key and endpoint.

How should you complete the request? To answer, select the appropriate options in the answer area.

NOTE: Each correct selection is worth one point.

Answer Area

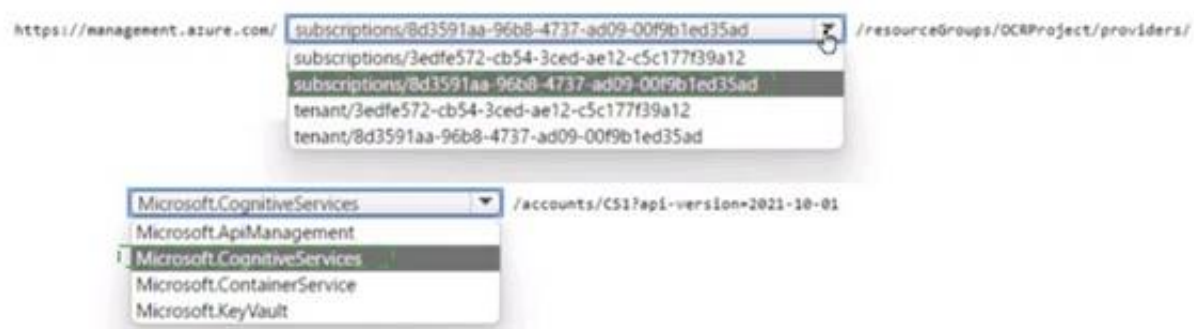


- A. Mastered
- B. Not Mastered

Answer: A

Explanation:

Answer Area



NEW QUESTION 80

- (Topic 3)

You plan to provision a QnA Maker service in a new resource group named RG1. In RG1, you create an App Service plan named AP1.

Which two Azure resources are automatically created in RG1 when you provision the QnA Maker service? Each correct answer presents part of the solution.

NOTE: Each correct selection is worth one point.

- A. Language Understanding
- B. Azure SQL Database
- C. Azure Storage
- D. Azure Cognitive Search
- E. Azure App Service

Answer: DE

Explanation:

Reference:

<https://docs.microsoft.com/en-us/azure/cognitive-services/qnamaker/how-to/set-up-qnamaker-service-azure?tabs=v1#delete-azure-resources>

"When you create a QnAMaker resource, you host the data in your own Azure subscription. Azure Search is used to index your data." & "When you create a QnAMaker resource, you host the runtime in your own Azure subscription. App Service is the compute engine that runs the QnA Maker queries for you."

NEW QUESTION 83

HOTSPOT - (Topic 3)

You are developing a service that records lectures given in English (United Kingdom).

You have a method named AppendToTranscriptFile that takes translated text and a language identifier.

You need to develop code that will provide transcripts of the lectures to attendees in their respective language. The supported languages are English, French, Spanish, and German.

How should you complete the code? To answer, select the appropriate options in the answer area.
NOTE: Each correct selection is worth one point.

Answer Area

```
static async Task TranslateSpeechAsync()
{
    var config =SpeechTranslationConfig.FromSubscription("69cad5cc-0ab3-4704-bdff-afbf4aa07d85", "uksouth");

    var lang = new List<string>
    {
        "en-GB"
    };

    config.SpeechRecognitionLanguage = "en-GB";
    lang.ForEach(config.AddTargetLanguage);

    using var audioConfig = AudioConfig.FromDefaultMicrophoneInput();
    using var recognizer = new TranslationRecognizer(config, audioConfig);

    var result = await recognizer.RecognizeOnceAsync();
    if (result.Reason == ResultReason.TranslatedSpeech)
```

- A. Mastered
- B. Not Mastered

Answer: A

Explanation:

Box 1: {"fr", "de", "es"}

A common task of speech translation is to specify target translation languages, at least one is required but multiples are supported. The following code snippet sets both French and German as translation language targets.

```
static async Task TranslateSpeechAsync()
{
    var translationConfig =
    SpeechTranslationConfig.FromSubscription(SPEECH SUBSCRIPTION KEY, SPEECH SERVICE REGION);
    translationConfig.SpeechRecognitionLanguage = "it-IT";
    // Translate to languages. See, https://aka.ms/speech/sttt-languages translationConfig.AddTargetLanguage("fr"); translationConfig.AddTargetLanguage("de");
}
```

Box 2: TranslationRecognizer

After you've created a SpeechTranslationConfig, the next step is to initialize a TranslationRecognizer.

Example code:

```
static async Task TranslateSpeechAsync()
{
    var translationConfig =
    SpeechTranslationConfig.FromSubscription(SPEECH SUBSCRIPTION KEY, SPEECH SERVICE REGION);
    var fromLanguage = "en-US";
    var toLanguages = new List<string> { "it", "fr", "de" }; translationConfig.SpeechRecognitionLanguage = fromLanguage;
    toLanguages.ForEach(translationConfig.AddTargetLanguage);
    using var recognizer = new TranslationRecognizer(translationConfig);
}
```

NEW QUESTION 85

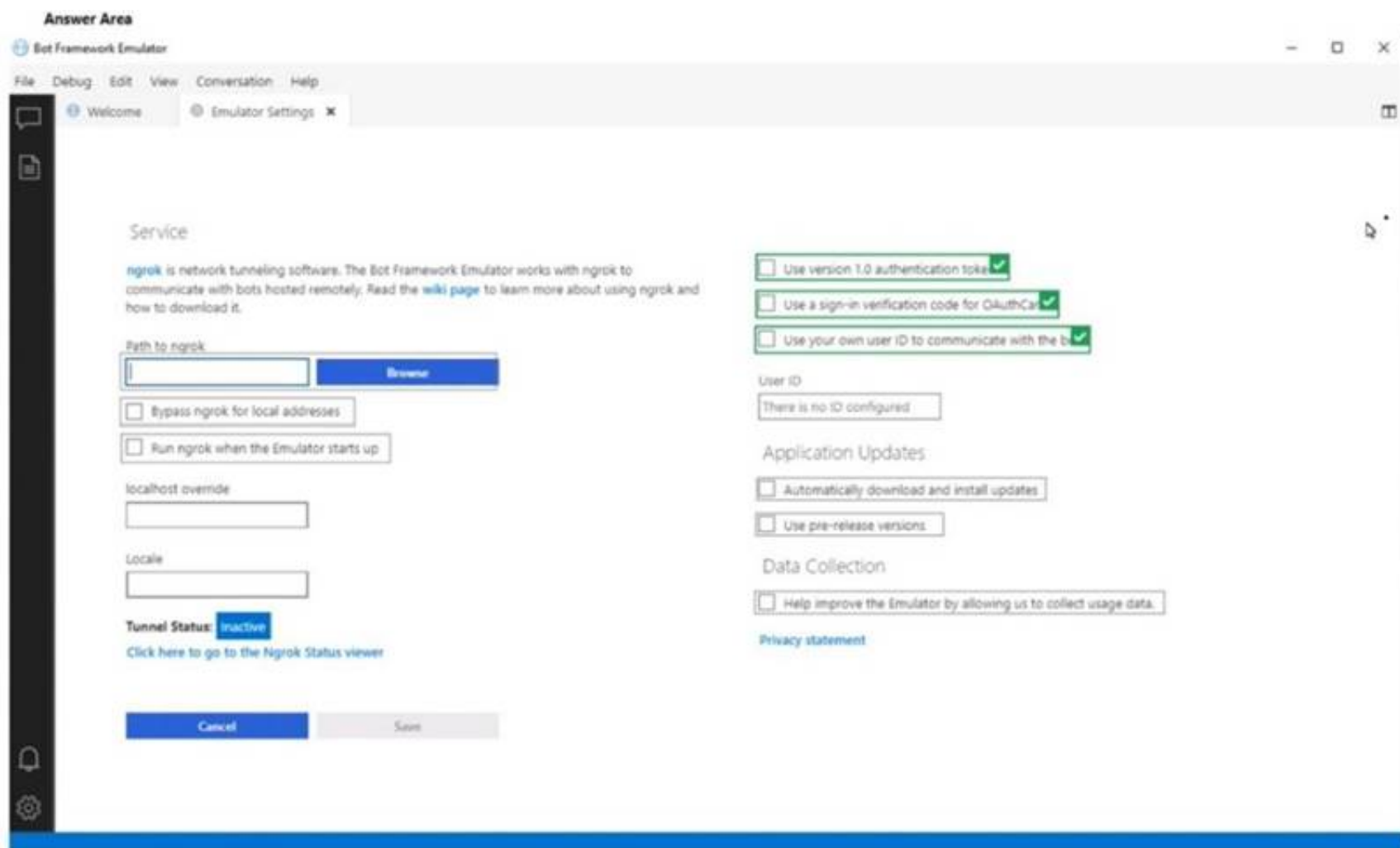
HOTSPOT - (Topic 3)

You have a chatbot.

You need to test the bot by using the Bot Framework Emulator. The solution must ensure that you are prompted for credentials when you sign in to the bot.

Which three settings should you configure? To answer, select the appropriate settings in the answer area.

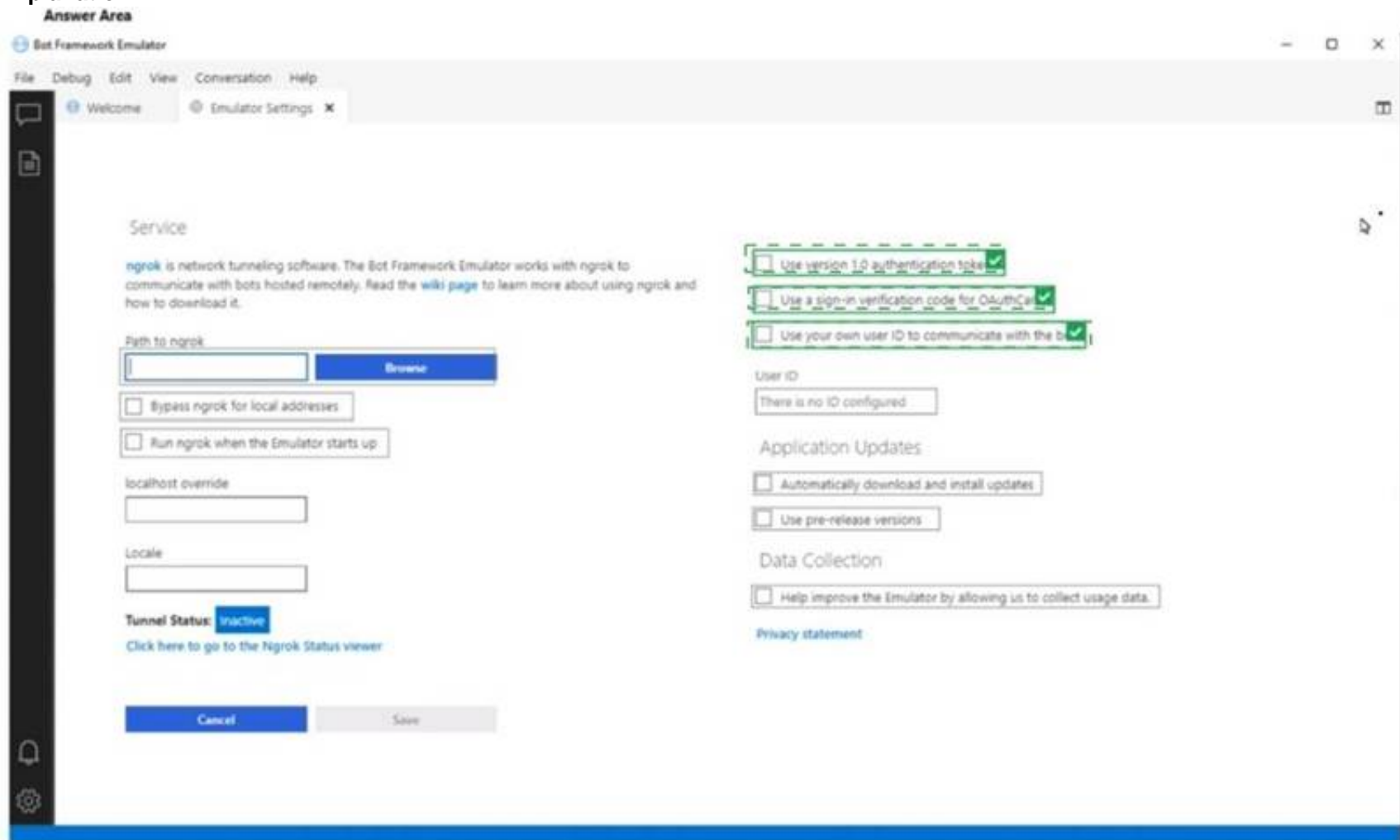
NOTE Each correct selection is worth one point.



- A. Mastered
- B. Not Mastered

Answer: A

Explanation:



NEW QUESTION 87

- (Topic 3)

You have an Azure subscription that contains an AI enrichment pipeline in Azure Cognitive Search and an Azure Storage account that has 10 GB of scanned documents and images. You need to index the documents and images in the storage account. The solution must minimize how long it takes to build the index. What should you do?

- A. From the Azure portal, configure parallel indexing.
- B. Create a text-based indexer by using the REST API.
- C. From the Azure portal, configure scheduled indexing.
- D. Configure field mappings by using the REST API.

Answer: A

NEW QUESTION 89

- (Topic 3)

You are developing a solution to generate a word cloud based on the reviews of a company's products. Which Text Analytics REST API endpoint should you use?

- A. keyPhrases
- B. sentiment
- C. languages
- D. entities/recognition/general

Answer: A

Explanation:

Reference:

<https://docs.microsoft.com/en-us/azure/cognitive-services/text-analytics/overview>

NEW QUESTION 91

- (Topic 3)

You manage an application that stores data in a shared folder on a Windows server. You need to move the shared folder to Azure Storage. Which type of Azure Storage should you use?

- A. table
- B. queue
- C. file
- D. blob

Answer: C

NEW QUESTION 94

- (Topic 3)

You have the following data sources:

? Finance: On-premises Microsoft SQL Server database

? Sales: Azure Cosmos DB using the Core (SQL) API

? Logs: Azure Table storage

? HR: Azure SQL database

You need to ensure that you can search all the data by using the Azure Cognitive Search REST API. What should you do?

- A. Configure multiple read replicas for the data in Sales.
- B. Mirror Finance to an Azure SQL database.
- C. Migrate the data in Sales to the MongoDB API.
- D. Ingest the data in Logs into Azure Sentinel.

Answer: B

Explanation:

On-premises Microsoft SQL Server database cannot be used as an index data source. Note: Indexer in Azure Cognitive Search: : Automate aspects of an indexing operation by

configuring a data source and an indexer that you can schedule or run on demand. This feature is supported for a limited number of data source types on Azure.

Indexers crawl data stores on Azure.

? Azure Blob Storage

? Azure Data Lake Storage Gen2 (in preview)

? Azure Table Storage

? Azure Cosmos DB

? Azure SQL Database

? SQL Managed Instance

? SQL Server on Azure Virtual Machines

Reference:

<https://docs.microsoft.com/en-us/azure/search/search-indexer-overview#supported-data-sources>

NEW QUESTION 98

- (Topic 3)

You plan to perform predictive maintenance.

You collect IoT sensor data from 100 industrial machines for a year. Each machine has 50 different sensors that generate data at one-minute intervals. In total, you have 5,000 time series datasets.

You need to identify unusual values in each time series to help predict machinery failures. Which Azure Cognitive Services service should you use?

- A. Anomaly Detector
- B. Cognitive Search
- C. Form Recognizer
- D. Custom Vision

Answer: A

NEW QUESTION 101

HOTSPOT - (Topic 3)

For each of the following statements, select Yes if the statement is true. Otherwise, select No.

NOTE: Each correct selection is worth one point.

Answer Area

Statements	Yes	No
Normalization involves eliminating relationships between database tables.	<input type="radio"/>	<input type="radio"/>
Normalizing a database reduces data redundancy.	<input type="radio"/>	<input type="radio"/>
Normalization improves data integrity.	<input type="radio"/>	<input type="radio"/>

- A. Mastered
B. Not Mastered

Answer: A

Explanation:

Answer Area

Statements	Yes	No
Normalization involves eliminating relationships between database tables.	<input type="radio"/>	<input checked="" type="radio"/>
Normalizing a database reduces data redundancy.	<input checked="" type="radio"/>	<input type="radio"/>
Normalization improves data integrity.	<input checked="" type="radio"/>	<input type="radio"/>

NEW QUESTION 102

- (Topic 3)

Which property of a transactional workload guarantees that each transaction is treated as a single unit that either succeeds completely or tails completely?

- A. isolation
B. atomicity
C. consistency
D. durability

Answer: B

NEW QUESTION 103

HOTSPOT - (Topic 3)

You are building an Azure web app named App1 that will translate text from English to Spanish.

You need to use the Text Translation REST API to perform the translation. The solution must ensure that you have data sovereignty in the United States.

How should you complete the URI? To answer, select the appropriate options in the answer area.

NOTE: Each correct selection is worth one point.

Answer Area

https://

api-nam.cognitive.microsofttranslator.com

api.cognitive.microsofttranslator.com

api-nam.cognitive.microsofttranslator.com

api-nam.cognitiveservices.azure.com

eastus.api.cognitive.microsoft.com

/

translate

detect

languages

text-to-speech

translate

?api-version=3.0&to=es

- A. Mastered
B. Not Mastered

Answer: A

Explanation:

* 1. api-nam.cognitive.microsofttranslator.com

* 2. translate

[https://learn.microsoft.com/en-us/azure/cognitive-services/Translator/reference/v3-0- reference#base-urls](https://learn.microsoft.com/en-us/azure/cognitive-services/Translator/reference/v3-0-reference#base-urls)

Requests to Translator are, in most cases, handled by the datacenter that is closest to where the request originated. If there's a datacenter failure when using the global endpoint, the request may be routed outside of the geography.

To force the request to be handled within a specific geography, use the desired geographical endpoint. All requests are processed among the datacenters within the geography.

- United States

api-nam.cognitive.microsofttranslator.com

[https://learn.microsoft.com/en-us/azure/cognitive-services/translator/reference/rest-api- guide- translate](https://learn.microsoft.com/en-us/azure/cognitive-services/translator/reference/rest-api-guide-translate)

Translate specified source language text into the target language text.

NEW QUESTION 104

- (Topic 3)

What is a characteristic of a non-relational database?

- A. full support for Transact-SQL
B. a fixed schema
C. self describing entities

Answer: C

NEW QUESTION 109

- (Topic 3)

A customer uses Azure Cognitive Search.

The customer plans to enable a server-side encryption and use customer-managed keys (CMK) stored in Azure.

What are three implications of the planned change? Each correct answer presents a complete solution.

NOTE: Each correct selection is worth one point.

- A. The index size will increase.
- B. Query times will increase.
- C. A self-signed X.509 certificate is required.
- D. The index size will decrease.
- E. Query times will decrease.
- F. Azure Key Vault is required.

Answer: ABF

Explanation:

"Customer-managed keys require an additional billable service, Azure Key Vault, which can be in a different region, but under the same subscription, as Azure Cognitive Search. Enabling CMK encryption will increase index size and degrade query performance."

same document also lists Azure Key Vault as a requirement: <https://docs.microsoft.com/en-us/azure/search/search-security-overview#data-protection>

NEW QUESTION 112

- (Topic 3)

You create five bots by using Microsoft Bot Framework Composer.

You need to make a single bot available to users that combines the bots. The solution must support dynamic routing to the bots based on user input.

Which three actions should you perform? Each correct answer presents part of the solution.

NOTE: Each correct selection is worth one point.

- A. Create an Orchestrator model.
- B. Change the Recognizer/Dispatch type.
- C. Create a composer extension.
- D. Enable WebSockets.
- E. Create a custom recognizer JSON file.
- F. Install the Orchestrator package.

Answer: ABF

NEW QUESTION 113

DRAG DROP - (Topic 3)

You plan to build a chatbot to support task tracking.

You create a Conversational Language Understanding service named lu1.

You need to build a Conversational Language Understanding model to Integrate into the chatbot. The solution must minimize development time to build the model.

Which four actions should you perform in sequence? To answer, move the appropriate actions from the list of actions to the answer area and arrange them in the correct order.

Actions	Answer Area
Add the prebuilt domain ToDo.	
Add a new application.	
Add example utterances.	
Train the application.	
Publish the application.	

- A. Mastered
- B. Not Mastered

Answer: A

Explanation:

Actions	Answer Area
Add the prebuilt domain ToDo.	
Add a new application.	
Add example utterances.	
Train the application.	
Publish the application.	

NEW QUESTION 118

- (Topic 3)

You have a text-based chatbot.

You need to enable content moderation by using the Text Moderation API of Content Moderator. Which two service responses should you use? Each correct answer presents part of the solution NOTE: Each correct selection is worth one point.

- A. the adult classification score
- B. optical character recognition (OCR)
- C. personal data
- D. text classification

E. the racy classification score

Answer: AD

NEW QUESTION 122

HOTSPOT - (Topic 3)

You are building an app by using the Speech SDK. The app will translate speech from French to German by using natural language processing. You need to define the source language and the output language.

How should you complete the code? To answer, select the appropriate options in the answer area.

NOTE: Each correct selection is worth one point.

Answer Area

```
var speechTranslationConfig =
    SpeechTranslationConfig.FromSubscription(speechKey, speechRegion);
speechTranslationConfig.
    speech_translation_config.
```

SpeechRecognitionLanguage

AddTargetLanguage

SpeechRecognitionLanguage

SpeechSynthesisLanguage

TargetLanguages

VoiceName

= "fr"

SpeechSynthesisLanguage

AddTargetLanguage

SpeechRecognitionLanguage

SpeechSynthesisLanguage

TargetLanguages

VoiceName

("de")

- A. Mastered
- B. Not Mastered

Answer: A

Explanation:

Answer Area

```
var speechTranslationConfig =
    SpeechTranslationConfig.FromSubscription(speechKey, speechRegion);
speechTranslationConfig.
    speech_translation_config.
```

SpeechRecognitionLanguage

AddTargetLanguage

SpeechRecognitionLanguage

SpeechSynthesisLanguage

TargetLanguages

VoiceName

= "fr"

SpeechSynthesisLanguage

AddTargetLanguage

SpeechRecognitionLanguage

SpeechSynthesisLanguage

TargetLanguages

VoiceName

("de")

NEW QUESTION 123

DRAG DROP - (Topic 3)

You are building an app that will scan confidential documents and use the Language service to analyze the contents.

You provision an Azure Cognitive Services resource.

You need to ensure that the app can make requests to the Language service endpoint. The solution must ensure that confidential documents remain on-premises. Which three actions should you perform in sequence? To answer, move the appropriate actions from the list of actions to the answer area and arrange them in the correct order.

Actions

Pull an image from Docker Hub.

Provision an on-premises Kubernetes cluster that has internet connectivity.

Provision an Azure Kubernetes Service (AKS) resource.

Run the container and specify an App ID and Client Secret.

Provision an on-premises Kubernetes cluster that is isolated from the internet.

Pull an image from the Microsoft Container Registry (MCR).

Run the container and specify an API key and the Endpoint URL of the Cognitive Services resource.

Answer Area

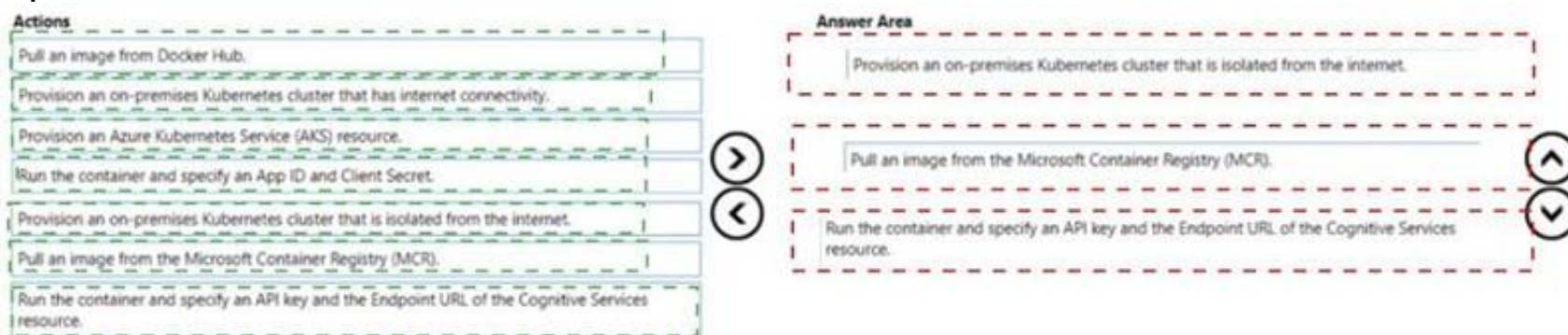
- A. Mastered
- B. Not Mastered

Guaranteed success with Our exam guides

visit - <https://www.certshared.com>

Answer: A

Explanation:



NEW QUESTION 127

- (Topic 3)

You are building a chatbot.

You need to configure the chatbot to query a knowledge base. Which dialog class should you use?

- A. AdaptiveDialog
- B. QnAMakerDialog
- C. ComponentDialog
- D. SkillDialog

Answer: B

NEW QUESTION 131

- (Topic 3)

You have the following C# method for creating Azure Cognitive Services resources programmatically.

```
static void create_resource(CognitiveServicesManagementClient client, string
resource_name, string kind, string account_tier, string location)
{
    CognitiveServicesAccount parameters =
        new CognitiveServicesAccount(null, null, kind, location, resource_name,
new CognitiveServicesAccountProperties(), new Sku(account_tier));
    var result = client.Accounts.Create(resource_group_name, account_tier,
parameters);
}
```

You need to call the method to create a free Azure resource in the West US Azure region. The resource will be used to generate captions of images automatically. Which code should you use?

- A. create_resource(client, "res1", "ComputerVision", "F0", "westus")
- B. create_resource(client, "res1", "CustomVision.Prediction", "F0", "westus")
- C. create_resource(client, "res1", "ComputerVision", "S0", "westus")
- D. create_resource(client, "res1", "CustomVision.Prediction", "S0", "westus")

Answer: B

Explanation:

<https://azure.microsoft.com/en-us/pricing/details/cognitive-services/computer-vision/>

NEW QUESTION 134

- (Topic 3)

You have a Language service resource that performs the following:

- Sentiment analysis
- Named Entity Recognition (NER)
- Personally Identifiable Information (PII) identification

You need to prevent the resource from persisting input data once the data is analyzed. Which query parameter in the Language service API should you configure?

- A. loggingOptOut
- B. piiCategories
- C. showStats
- D. Model-version

Answer: A

NEW QUESTION 139

- (Topic 3)

Note: This question is part of a series of questions that present the same scenario. Each question in the series contains a unique solution that might meet the stated goals. Some question sets might have more than one correct solution, while others might not have a correct solution.

After you answer a question in this section, you will NOT be able to return to it. As a result, these questions will not appear in the review screen.

You have an Azure Cognitive Search service.

During the past 12 months, query volume steadily increased.

You discover that some search query requests to the Cognitive Search service are being throttled.

You need to reduce the likelihood that search query requests are throttled. Solution: You add indexes.

Does this meet the goal?

- A. Yes
- B. No

Answer: B

Explanation:

Instead, you could migrate to a Cognitive Search service that uses a higher tier.

Note: A simple fix to most throttling issues is to throw more resources at the search service (typically replicas for query-based throttling, or partitions for indexing-based throttling). However, increasing replicas or partitions adds cost, which is why it is important to know the reason why throttling is occurring at all.

Reference:

<https://docs.microsoft.com/en-us/azure/search/search-performance-analysis>

NEW QUESTION 143

DRAG DROP - (Topic 3)

You develop an app in O named App1 that performs speech-to-speech translation. You need to configure App1 to translate English to German.

How should you complete the speechTransiationConf ig object? To answer, drag the appropriate values to the correct targets. Each value may be used once, more than once, or not at all. You may need to drag the split bar between panes or scroll to view content.

NOTE: Each correct selection is worth one point.

Values

addTargetLanguage

speechSynthesisLanguage

speechRecognitionLanguage

voiceName

Answer Area

```
var translationConfig = SpeechTranslationConfig.FromSubscription(SPEECH__SUBSCRIPTION__KEY, SPEECH__SERVICE__REGION);

translationConfig. [ ] = "en-US";
translationConfig. [ ] ("de");
```

- A. Mastered
- B. Not Mastered

Answer: A

Explanation:

Values

addTargetLanguage

speechSynthesisLanguage

speechRecognitionLanguage

voiceName

Answer Area

```
var translationConfig = SpeechTranslationConfig.FromSubscription(SPEECH__SUBSCRIPTION__KEY, SPEECH__SERVICE__REGION);

translationConfig. [speechRecognitionLanguage] = "en-US";
translationConfig. [addTargetLanguage] ("de");
```

NEW QUESTION 145

- (Topic 3)

You are developing a new sales system that will process the video and text from a public- facing website.

You plan to monitor the sales system to ensure that it provides equitable results regardless of the user's location or background.

Which two responsible AI principles provide guidance to meet the monitoring requirements? Each correct answer presents part of the solution. (Choose two.)

NOTE: Each correct selection is worth one point.

- A. transparency
- B. fairness
- C. inclusiveness
- D. reliability and safety
- E. privacy and security

Answer: BC

Explanation:

<https://docs.microsoft.com/en-us/learn/modules/get-started-ai-fundamentals/8-understand-responsible-ai>

NEW QUESTION 146

- (Topic 3)

You have an app that analyzes images by using the Computer Vision API.

You need to configure the app to provide an output for users who are vision impaired. The solution must provide the output in complete sentences.

Which API call should you perform?

- A. readInStreamAsync
- B. describelmageInStreamAsync
- C. togIfiagelNSTreaaSAsync
- D. analyreImageByDomainInStreamAsync

Answer: D

NEW QUESTION 148

- (Topic 3)

You are building a chatbot that will use question answering in Azure Cognitive Service for Language.

You have a PDF named Doc1.pdf that contains a product catalogue and a price list You upload Doc1.pdf and train the model.

During testing, users report that the chatbot responds correctly to the following question: What is the price of < product>?

The chatbot fails to respond to the following question: How much does <product* cost? You need to ensure that the chatbot responds correctly to both questions.
Solution: From Language Studio, you create an entity for cost, and then retrain and republish the model.
Does this meet the goal?

- A. Yes
- B. No

Answer: B

NEW QUESTION 153

DRAG DROP - (Topic 3)

You are building a Language Understanding model for purchasing tickets.
You have the following utterance for an intent named PurchaseAndSendTickets. Purchase [2 audit business] tickets to [Paris] [next Monday] and send tickets to [email@domain.com]
You need to select the entity types. The solution must use built-in entity types to minimize training data whenever possible.
Which entity type should you use for each label? To answer, drag the appropriate entity types to the correct labels. Each entity type may be used once, more than once, or not at all.
You may need to drag the split bar between panes or scroll to view content.

Entity Types

Email

List

Regex

GeographyV2

Machine learned

Answer Area

Paris:

email@domain.com:

2 audit business:

- A. Mastered
- B. Not Mastered

Answer: A

Explanation:

Box 1: GeographyV2
The prebuilt geographyV2 entity detects places. Because this entity is already trained, you do not need to add example utterances containing GeographyV2 to the application intents.
Box 2: Email
Email prebuilt entity for a LUIS app: Email extraction includes the entire email address from an utterance. Because this entity is already trained, you do not need to add example utterances containing email to the application intents.
Box 3: Machine learned
The machine-learning entity is the preferred entity for building LUIS applications.

NEW QUESTION 155

HOTSPOT - (Topic 3)

You have a collection of press releases stored as PDF files.
You need to extract text from the files and perform sentiment analysis.
Which service should you use for each task? To answer, select the appropriate options in the answer area.
NOTE: Each correct selection is worth one point.

Answer Area

Extract text:

Computer Vision

Azure Cognitive Search

Computer Vision

Form Recognizer

Perform sentiment analysis:

Language

Azure Cognitive Search

Computer Vision

Form Recognizer

Language

- A. Mastered
- B. Not Mastered

Answer: A

Explanation:

Answer Area

Extract text:

Perform sentiment analysis:

NEW QUESTION 158

- (Topic 3)

Note: This question is part of a series of questions that present the same scenario. Each question in the series contains a unique solution that might meet the stated goals. Some question sets might have more than one correct solution, while others might not have a correct solution.

After you answer a question in this section, you will NOT be able to return to it. As a result, these questions will not appear in the review screen.

You build a language model by using a Language Understanding service. The language model is used to search for information on a contact list by using an intent named FindContact.

A conversational expert provides you with the following list of phrases to use for training. Find contacts in London.

Who do I know in Seattle? Search for contacts in Ukraine.

You need to implement the phrase list in Language Understanding. Solution: You create a new entity for the domain.

Does this meet the goal?

- A. Yes
- B. No

Answer: B

Explanation:

Instead use a new intent for location.

Note: An intent represents a task or action the user wants to perform. It is a purpose or goal expressed in a user's utterance.

Define a set of intents that corresponds to actions users want to take in your application. Reference:

<https://docs.microsoft.com/en-us/azure/cognitive-services/luis/luis-concept-intent>

NEW QUESTION 159

- (Topic 3)

You are building a bot by using Microsoft Bot Framework.

You need to configure the bot to respond to spoken requests. The solution must minimize development effort.

What should you do?

- A. Deploy the bot to Azure and register the bot with a Direct Une Speech channel
- B. Integrate the bot with Cortana by using the Bot Framework SDK.
- C. Create an Azure function that will call the Speech service and connect the bot to the function.
- D. Deploy the bot to Azure and register the bot with a Microsoft Teams channel.

Answer: B

NEW QUESTION 164

HOTSPOT - (Topic 3)

You plan to deploy a containerized version of an Azure Cognitive Services service that will be used for text analysis.

You configure <https://contoso.cognitiveservices.azure.com> as the endpoint URI for the service, and you pull the latest version of the Text Analytics Sentiment Analysis container.

You need to run the container on an Azure virtual machine by using Docker.

How should you complete the command? To answer, select the appropriate options in the answer area.

NOTE: Each correct selection is worth one point.

```
docker run --rm -it -p 5000:5000 --memory 8g --cpus 1 \
```

```
Eula=accept \
```

Billing=

```
ApiKey=xxxxxxxxxxxxxxxxxxxxxx
```

- A. Mastered
- B. Not Mastered

Answer: A

Explanation:

Box 1: mcr.microsoft.com/azure-cognitive-services/textanalytics/sentiment

To run the Sentiment Analysis v3 container, execute the following docker run command. docker run --rm -it -p 5000:5000 --memory 8g --cpus 1 \ mcr.microsoft.com/azure-cognitive-services/textanalytics/sentiment \ Eula=accept \

Billing={ENDPOINT_URI} \

ApiKey={API_KEY} is the endpoint for accessing the Text Analytics API. https://<your- custom-subdomain>.cognitiveservices.azure.com

Box 2: https://contoso.cognitiveservices.azure.com

{ENDPOINT_URI} is the endpoint for accessing the Text Analytics API: https://<your- custom-subdomain>.cognitiveservices.a The endpoint for accessing the Text Analytics API. zure.com

NEW QUESTION 166

HOTSPOT - (Topic 3)

You have an Azure subscription that contains an Azure AI Document Intelligence resource named DM.

You build an app named App1 that analyzes PDF files for handwritten content by using DM.

You need to ensure that App1 will recognize the handwritten content.

How should you complete the code? To answer, select the appropriate options in the answer area.

NOTE: Each correct selection is worth one point.

Answer Area

```
Uri fileUri = new Uri("<fileUri>");

AnalyzeDocumentOperation operation = await client.AnalyzeDocumentFromUriAsync(WaitUntil.Completed,
AnalyzeResult result = operation.Value;

foreach (DocumentStyle style in result.Styles)
{
    bool isHandwritten = style.IsHandwritten.HasValue && style.IsHandwritten == true;

    if (isHandwritten && style.Confidence > 0.75 )
    {

        Console.WriteLine($"Handwritten content found:");

        foreach (DocumentSpan span in style.Spans)
        {
            Console.WriteLine($" Content: {result.Content.Substring(span.Index, span.Length)}");
        }
    }
}
```

prebuilt-document, fileUri);

0.75

0.1

0.75

1.0

- A. Mastered
- B. Not Mastered

Answer: A

Explanation:

Answer Area

```
Uri fileUri = new Uri("<fileUri>");

AnalyzeDocumentOperation operation = await client.AnalyzeDocumentFromUriAsync(WaitUntil.Completed,
AnalyzeResult result = operation.Value;

foreach (DocumentStyle style in result.Styles)
{
    bool isHandwritten = style.IsHandwritten.HasValue && style.IsHandwritten == true;

    if (isHandwritten && style.Confidence > 0.75 )
    {

        Console.WriteLine($"Handwritten content found:");

        foreach (DocumentSpan span in style.Spans)
        {
            Console.WriteLine($" Content: {result.Content.Substring(span.Index, span.Length)}");
        }
    }
}
```

prebuilt-document, fileUri);

prebuilt-document,

prebuilt-contract,

prebuilt-read,

0.75

0.1

0.75

1.0

NEW QUESTION 169

- (Topic 3)

What is the primary purpose of a data warehouse?

- A. to provide storage for transactional line-of-business (LOB) applications

- B. to provide transformation services between source and target data stores
- C. to provide read only storage of relational and non relational historical data
- D. to provide answers to complex queries that rely on data from multiple sources

Answer: C

NEW QUESTION 171

DRAG DROP - (Topic 3)

You have an Azure subscription that contains an Azure OpenA1 resource named AH. You plan to build an app named App1 that will write press releases by using AM.

You need to deploy an Azure OpenA1 model for Appl. The solution must minimize development effort.

Which three actions should you perform in sequence in Azure OpenAI Studio? To answer, move the appropriate actions from the list of actions to the answer area and arrange them in the correct order.

Actions

Create a deployment that uses the text-embedding-ada-002 model.

Apply the Default system message template.

Create a deployment that uses the GPT-35 Turbo model.

Apply the Marketing Writing Assistant system message template.

Deploy the solution to a new web app.

>

<

Answer Area

<

>

- A. Mastered
- B. Not Mastered

Answer: A

Explanation:

Actions

Create a deployment that uses the text-embedding-ada-002 model.

Apply the Default system message template.

Create a deployment that uses the GPT-35 Turbo model.

Apply the Marketing Writing Assistant system message template.

Deploy the solution to a new web app.

>

<

Answer Area

Create a deployment that uses the GPT-35 Turbo model.

Apply the Marketing Writing Assistant system message template.

Deploy the solution to a new web app.

<

>

NEW QUESTION 175

DRAG DROP - (Topic 3)

You Build a bot in JavaScript.

From the Azure Command-Line interface (CLI), you run the following command. az bot prepare-deploy

You need to deploy the bot to Azure.

Which three Azure CLI commands should you run in sequence? To answer, move the appropriate commands from the list of commands to the answer area and arrange them in the client order.

Commands

az ad app credential

az ad app create

az deployment group create

az webapp deployment source config-zip

az ad app update

>

<

Answer Area

<

>

- A. Mastered
- B. Not Mastered

Answer: A

Explanation:

To deploy the bot to Azure, you should run the following three Azure CLI commands in sequence:

? az deployment group create This command will create the Azure resources for your bot using an ARM template and a parameters file. You need to specify the resource group name, the template file path, and the parameters file path. For example:

az deployment group create --resource-group myResourceGroup --template-file "deploymentTemplates\template-with-preexisting-rg.json" --parameters "deploymentTemplates\parameters-for-template-BotApp-with-rg.json"

This command will also output the app ID and password of your bot, which you will need for the next command1.

? az webapp deployment source config-zip This command will deploy your bot code

to the app service that you created in the previous step. You need to specify the resource group name, the app service name, and the zip file path of your bot code. For example:

az webapp deployment source config-zip --resource-group myResourceGroup --name myBotAppService --src "code.zip"

This command will also output the URL of your bot endpoint, which you will need for the next command2.

? az ad app update This command will update your bot registration with the endpoint

URL of your bot. You need to specify the app ID of your bot and the endpoint URL. For example:

az ad app update --id myBotAppId --set replyUrls="https://myBotAppService.azurewebsites.net/api/messages"

This command will complete the deployment process and make your bot ready to be tested3.

NEW QUESTION 178

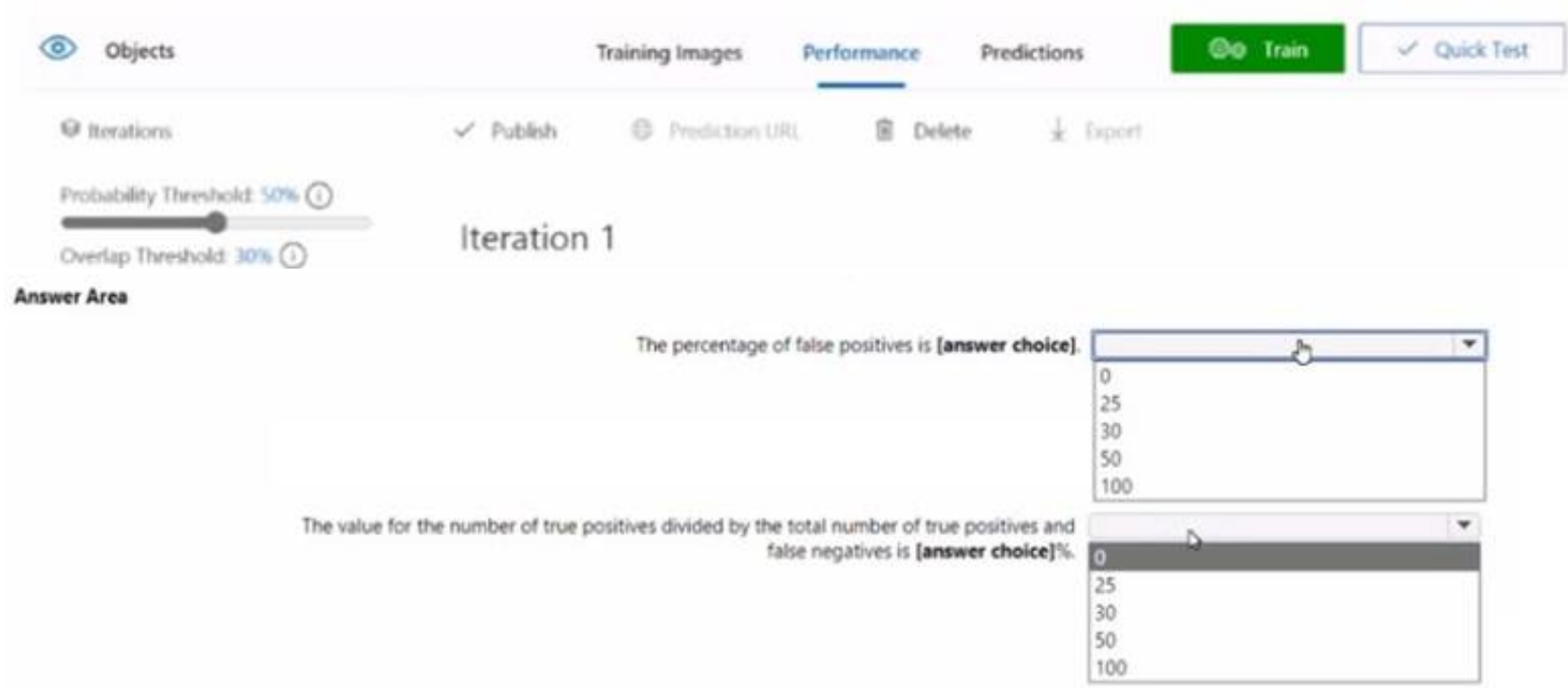
- (Topic 3)
Note: This question is part of a series of questions that present the same scenario. Each question in the series contains a unique solution that might meet the stated goals. Some question sets might have more than one correct solution, while others might not have a correct solution.
After you answer a question in this section, you will NOT be able to return to it. As a result, these questions will not appear in the review screen.
You create a web app named app1 that runs on an Azure virtual machine named vm1. Vm1 is on an Azure virtual network named vnet1.
You plan to create a new Azure Cognitive Search service named service1.
You need to ensure that app1 can connect directly to service1 without routing traffic over the public internet.
Solution: You deploy service1 and a public endpoint, and you configure a network security group (NSG) for vnet1.
Does this meet the goal?

- A. Yes
- B. No

Answer: A

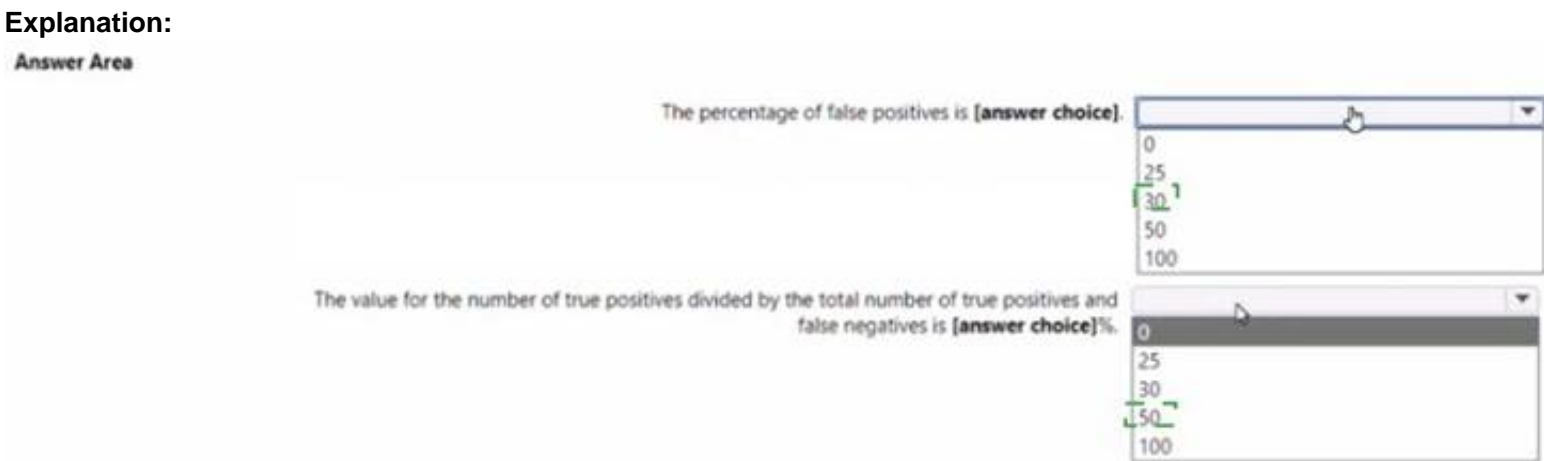
Explanation:
<https://docs.microsoft.com/en-us/azure/virtual-network/network-security-groups-overview#network-security-groups>
<https://docs.microsoft.com/en-us/azure/virtual-network/virtual-networks-overview>

NEW QUESTION 182
HOTSPOT - (Topic 3)
You are building a model to detect objects in images.
The performance of the model based on training data is shown in the following exhibit.



- A. Mastered
- B. Not Mastered

Answer: A



NEW QUESTION 186
DRAG DROP - (Topic 3)
You are building a transcription service for technical podcasts.
Testing reveals that the service fails to transcribe technical terms accurately. You need to improve the accuracy of the service.
Which five actions should you perform in sequence? To answer, move the appropriate actions from the list of actions to the answer area and arrange them in the correct order.
NOTE: More than one order of answer choices is correct. You will receive credit for any of the correct orders you select.

Actions	Answer Area
Create a Speaker Recognition model.	<div> <div>></div> <div><</div> <div>↑</div> <div>↓</div> </div>
Create a Conversational Language Understanding model.	
Create a Custom Speech project.	
Create a speech-to-text model.	
Upload training datasets.	
Train the model.	
Deploy the model.	

- A. Mastered
 B. Not Mastered

Answer: A

Explanation:

<https://learn.microsoft.com/en-us/azure/cognitive-services/speech-service/custom-speech-overview#how-does-it-work>

With Custom Speech, you can upload your own data, test and train a custom model, compare accuracy between models, and deploy a model to a custom endpoint.

- Create a project and choose a model. Use a Speech resource that you create in the Azure portal. If you will train a custom model with audio data, choose a Speech resource region with dedicated hardware for training audio data.
- Upload test data. Upload test data to evaluate the speech to text offering for your applications, tools, and products.
- Train a model. Provide written transcripts and related text, along with the corresponding audio data. Testing a model before and after training is optional but recommended.
- Deploy a model. Once you're satisfied with the test results, deploy the model to a custom endpoint. With the exception of batch transcription, you must deploy a custom endpoint to use a Custom Speech model.

NEW QUESTION 189

- (Topic 3)

You are building a social media extension that will convert text to speech. The solution must meet the following requirements:

- Support messages of up to 400 characters.
- Provide users with multiple voice options.
- Minimize costs.

You create an Azure Cognitive Services resource.

Which Speech API endpoint provides users with the available voice options?

- A. <https://uksouth.customvoice.apispeech.microsoft.com/api/texttospeech/v3.0/longaudiosynthesiss/voices>
 B. <https://uksouth.tts.speech.microsoft.com/cognitiveservices/voices/list>
 C. <https://uksouth.voice.speech.microsoft.com/cognitiveservices/v1?deploymentId={deploymentId}>
 D. <https://uksouth.api.cognitive.microsoft.com/speechtotext/v3.0/models/base>

Answer: B

NEW QUESTION 194

HOTSPOT - (Topic 3)

You develop an application that uses the Face API. You need to add multiple images to a person group.

How should you complete the code? To answer, select the appropriate options in the answer area.

NOTE: Each correct selection is worth one point.

Answer Area

```
Parallel.For(0, PersonCount, async i =>
{
    Guid personId = persons[i].PersonId;
    string personImageDir = $"/path/to/person/{i}/images";
    foreach (string imagePath in Directory.GetFiles(personImageDir, "*.jpg"))
    {
        using (
            t = File.OpenRead(imagePath))
        {
            await faceClient.PersonGroupPerson.
                (personGroupId, personId, t);
        }
    }
});
```

- A. Mastered
 B. Not Mastered

Answer: A

Explanation:

Box 1: Stream

The File.OpenRead(String) method opens an existing file for reading.

Example: Open the stream and read it back. using (FileStream fs = File.OpenRead(path))

Box 2: AddFaceFromStreamAsync

Step 5 on <https://docs.microsoft.com/en-us/azure/cognitive-services/face/face-api-how-to-topics/how-to-add-faces>

NEW QUESTION 199

DRAG DROP - (Topic 3)

You have a question answering project in Azure Cognitive Service for Language.

You need to move the project to a Language service instance in a different Azure region. Which three actions should you perform in sequence? To answer, move the appropriate

actions from the list of actions to the answer area and arrange them in the correct order.

Actions

From the new Language service instance, import the project file.

From the new Language service instance, enable custom text classification.

From the new Language service instance, train and publish the project.

From the original Language service instance, export the existing project.

From the new Language service instance, regenerate the keys.

From the original Language service instance, train and publish the model.

>

<

Answer Area

^

v

- A. Mastered
- B. Not Mastered

Answer: A

Explanation:

Actions

From the new Language service instance, import the project file.

From the new Language service instance, enable custom text classification.

From the new Language service instance, train and publish the project.

From the original Language service instance, export the existing project.

From the new Language service instance, regenerate the keys.

From the original Language service instance, train and publish the model.

>

<

Answer Area

From the original Language service instance, export the existing project.

From the new Language service instance, regenerate the keys.

From the original Language service instance, train and publish the model.

^

v

NEW QUESTION 200

- (Topic 3)

Which scenario is an example of a streaming workload?

- A. sending transactions daily from point of sale (POS) devices
- B. sending cloud infrastructure metadata every 30 minutes
- C. sending transactions that are older than a month to an archive
- D. sending telemetry data from edge devices

Answer: D

NEW QUESTION 205

- (Topic 3)

You build a chatbot that uses the Azure OpenAI GPT 3.5 model.

You need to improve the quality of the responses from the chatbot. The solution must minimize development effort.

What are two ways to achieve the goal? Each correct answer presents a complete solution. NOTE: Each correct answer is worth one point.

- A. Fine-tune the model.
- B. Provide grounding content.
- C. Add sample request/response pairs.
- D. Retrain the language model by using your own data.
- E. Train a custom large language model (LLM).

Answer: BC

NEW QUESTION 208

- (Topic 3)

You are building a language model by using a Language Understanding service. You create a new Language Understanding resource.

You need to add more contributors. What should you use?

- A. a conditional access policy in Azure Active Directory (Azure AD)
- B. the Access control (1AM) page for the authoring resources in the Azure portal
- C. the Access control (1AM) page for the prediction resources in the Azure portal

Answer: B

Explanation:

Reference:

<https://docs.microsoft.com/en-us/azure/cognitive-services/luis/luis-how-to-collaborate>

NEW QUESTION 212

- (Topic 3)

Note: This question is part of a series of questions that present the same scenario. Each question in the series contains a unique solution that might meet the stated goals. Some question sets might have more than one correct solution, while others might not have a correct solution.

After you answer a question in this section, you will NOT be able to return to it. As a result, these questions will not appear in the review screen.

You have an Azure Cognitive Search service.

During the past 12 months, query volume steadily increased.

You discover that some search query requests to the Cognitive Search service are being throttled.

You need to reduce the likelihood that search query requests are throttled. Solution: You migrate to a Cognitive Search service that uses a higher tier. Does this meet the goal?

A. Yes

B. No

Answer: A

Explanation:

A simple fix to most throttling issues is to throw more resources at the search service (typically replicas for query-based throttling, or partitions for indexing-based throttling). However, increasing replicas or partitions adds cost, which is why it is important to know the reason why throttling is occurring at all.

Reference:

<https://docs.microsoft.com/en-us/azure/search/search-performance-analysis>

NEW QUESTION 216

HOTSPOT - (Topic 3)

For each of the following statements, select Yes if the statement is true. Otherwise, select No.

NOTE: Each correct selection is worth one point.

Answer Area

Statements	Yes	No
Azure Databricks is an Apache Spark-based analytics platform.	<input type="radio"/>	<input type="radio"/>
Azure Analysis Services is used for transactional workloads.	<input type="radio"/>	<input type="radio"/>
Azure Data Factory orchestrates data integration workflows.	<input type="radio"/>	<input type="radio"/>

A. Mastered

B. Not Mastered

Answer: A

Explanation:

Answer Area

Statements	Yes	No
Azure Databricks is an Apache Spark-based analytics platform.	<input checked="" type="radio"/>	<input type="radio"/>
Azure Analysis Services is used for transactional workloads.	<input checked="" type="radio"/>	<input type="radio"/>
Azure Data Factory orchestrates data integration workflows.	<input checked="" type="radio"/>	<input type="radio"/>

NEW QUESTION 217

DRAG DROP - (Topic 3)

You plan to use a Language Understanding application named app1 that is deployed to a container.

App1 was developed by using a Language Understanding authoring resource named lu1. App1 has the versions shown in the following table.

Version	Trained date	Published date
V1.2	None	None
V1.1	2020-10-01	None
V1.0	2020-09-01	2020-09-15

You need to create a container that uses the latest deployable version of app1.

Which three actions should you perform in sequence? To answer, move the appropriate actions from the list of actions to the answer area and arrange them in the correct order. (Choose three.)

Actions

Answer Area

- Run a container that has version set as an environment variable.
- Export the model by using the Export as JSON option.
- Select v1.1 of app1.
- Run a container and mount the model file.
- Select v1.0 of app1.
- Export the model by using the Export for containers (GZIP) option.
- Select v1.2 of app1.

- A. Mastered
B. Not Mastered

Answer: A

Explanation:

Step 1: Export the model using the Export for containers (GZIP) option. Export versioned app's package from LUIS portal
The versioned app's package is available from the Versions list page.
? Sign on to the LUIS portal.
? Select the app in the list.
? Select Manage in the app's navigation bar.
? Select Versions in the left navigation bar.
? Select the checkbox to the left of the version name in the list.
? Select the Export item from the contextual toolbar above the list.
? Select Export for container (GZIP).
? The package is downloaded from the browser.



Step 2: Select v1.1 of app1.
A trained or published app packaged as a mounted input to the container with its associated App ID.
Step 3: Run a contain and mount the model file.
Run the container, with the required input mount and billing settings.

NEW QUESTION 218

DRAG DROP - (Topic 3)

You need to analyze video content to identify any mentions of specific company names.
Which three actions should you perform in sequence? To answer move the appropriate actions from the list of actions to the answer area and arrange them in the correct order.

Actions

Add the specific company names to the exclude list.

Sign in to the Custom Vision website.

From Content model customization, select **Language**.

Sign in to the Azure Video Analyzer for Media website.

From Content model customization, select **Brands**.

Add the specific company names to the include list.

Answer Area

- A. Mastered
- B. Not Mastered

Answer: A

Explanation:

Actions

Add the specific company names to the exclude list.

Sign in to the Custom Vision website.

From Content model customization, select **Language**.

Sign in to the Azure Video Analyzer for Media website.

From Content model customization, select **Brands**.

Add the specific company names to the include list.

Answer Area

Sign in to the Azure Video Analyzer for Media website.

From Content model customization, select **Brands**.

Add the specific company names to the include list.

NEW QUESTION 222

HOTSPOT - (Topic 3)

You are building a model that will be used in an iOS app.
You have images of cats and dogs. Each image contains either a cat or a dog.
You need to use the Custom Vision service to detect whether the images is of a cat or a dog.
How should you configure the project in the Custom Vision portal? To answer, select the appropriate options in the answer area.
NOTE: Each correct selection is worth one point.

Project Types:

Classification

Object Detection

Classification Types:

Multiclass (Single tag per image)

Multilabel (Multiple tags per image)

Domains:

Audit

Food

General

General (compact)

Landmarks

Landmarks (compact)

Retail

Retail (compact)

- A. Mastered
- B. Not Mastered

Answer: A

Explanation:

Box 1: Classification
Box 2: Multiclass
A multiclass classification project is for classifying images into a set of tags, or target labels. An image can be assigned to one tag only.
Box 3: General
General: Optimized for a broad range of image classification tasks. If none of the other specific domains are appropriate, or if you're unsure of which domain to choose, select one of the General domains.

NEW QUESTION 227

- (Topic 3)

Which database transaction property ensures that transactional changes to a database are preserved during unexpected operating system restarts?

- A. durability
- B. atomicity
- C. consistency
- D. isolation

Answer: A

NEW QUESTION 232

HOTSPOT - (Topic 3)

You are building a solution that students will use to find references for essays. You use the following code to start building the solution.

```
using Azure;
using System;
using Azure.AI.TextAnalytics;

private static readonly AzureKeyCredential credentials = new AzureKeyCredential("<key>");
private static readonly Uri endpoint = new Uri("<endpoint>");

static void EntityLinker(TextAnalyticsClient client)
{
    var response = client.RecognizeLinkedEntities(
        "Our tour guide took us up the Space Needle during our trip to Seattle last week.");
}
```

For each of the following statements, select Yes if the statement is true. Otherwise, select No. NOTE: Each correct selection is worth one point.

Answer Area

Statements	Yes	No
The code will detect the language of documents.	<input type="radio"/>	<input type="radio"/>
The <code>url</code> attribute returned for each linked entity will be a Bing search link.	<input type="radio"/>	<input type="radio"/>
The <code>matches</code> attribute returned for each linked entity will provide the location in a document where the entity is referenced.	<input type="radio"/>	<input type="radio"/>

- A. Mastered
- B. Not Mastered

Answer: A

Explanation:

Answer Area

Statements	Yes	No
The code will detect the language of documents.	<input type="radio"/>	<input checked="" type="radio"/>
The <code>url</code> attribute returned for each linked entity will be a Bing search link.	<input checked="" type="radio"/>	<input type="radio"/>
The <code>matches</code> attribute returned for each linked entity will provide the location in a document where the entity is referenced.	<input checked="" type="radio"/>	<input type="radio"/>

NEW QUESTION 233

HOTSPOT - (Topic 3)

Select the answer that correctly completes the sentence.

Answer Area

A data analyst
A data engineer
A data scientist

is responsible for identifying which business rules must be applied to the data of a company.

- A. Mastered
- B. Not Mastered

Answer: A

Explanation:

Answer Area

A data analyst
A data engineer
A data scientist

is responsible for identifying which business rules must be applied to the data of a company.

NEW QUESTION 235

HOTSPOT - (Topic 3)

You have an Azure subscription that contains an Azure OpenAI resource named AH. You build a chatbot that will use AI1 to provide generative answers to specific questions. You need to ensure that the responses are more creative and less deterministic.

How should you complete the code? To answer, select the appropriate options in the answer area.

NOTE: Each correct selection is worth one point.

Answer Area

```
new ChatCompletionsOptions()
{
    Messages =
    {
        new ChatMessage(
            ChatRole.User, @"",
        ),
        Temperature = (float)1.0,
        ChatRole.User
        PresencePenalty
        Temperature
        TokenSelectionBiases
    },
    MaxTokens = 800,
});
```

- A. Mastered
- B. Not Mastered

Answer: A

Explanation:

Answer Area

```
new ChatCompletionsOptions()
{
    Messages =
    {
        new ChatMessage(
            ChatRole.User, @"",
        ),
        Temperature = (float)1.0,
        ChatRole.User
        PresencePenalty
        Temperature
        TokenSelectionBiases
    },
    MaxTokens = 800,
});
```

NEW QUESTION 237

- (Topic 3)
You build a custom Form Recognizer model.
You receive sample files to use for training the model as shown in the following table.

Name	Type	Size
File1	PDF	20 MB
File2	MP4	100 MB
File3	JPG	20 MB
File4	PDF	100 MB
File5	GIF	1 MB
File6	JPG	40 MB

Which three files can you use to train the model? Each correct answer presents a complete solution. (Choose three.)
NOTE: Each correct selection is worth one point.

- A. File1
- B. File2
- C. File3
- D. File4
- E. File5
- F. File6

Answer: ACF

Explanation:

Input requirements

Form Recognizer works on input documents that meet these requirements:

Format must be JPG, PNG, PDF (text or scanned), or TIFF. Text-embedded PDFs are best because there's no possibility of error in character extraction and location.

File size must be less than 50 MB.

Reference:

<https://docs.microsoft.com/en-us/azure/cognitive-services/form-recognizer/overview>

NEW QUESTION 241

- (Topic 3)

You have an Azure Cognitive Search instance that indexes purchase orders by using Form Recognizer

You need to analyze the extracted information by using Microsoft Power BI. The solution must minimize development effort.

What should you add to the indexer?

- A. a table projection
- B. a projection group
- C. an object projection
- D. a file projection

Answer: C

NEW QUESTION 245

DRAG DROP - (Topic 3)

You train a Custom Vision model used in a mobile app.

You receive 1,000 new images that do not have any associated data.

You need to use the images to retrain the model. The solution must minimize how long it takes to retrain the model.

Which three actions should you perform in the Custom Vision portal? To answer, move the appropriate actions from the list of actions to the answer area and arrange them in the correct order.

Actions		Answer Area
Upload the images by category.		
Get suggested tags.		
Upload all the images.	⬅	⬆
Group the images locally into category folders.	➡	⬇
Review the suggestions and confirm the tags.		
Tag the images manually.		

- A. Mastered
- B. Not Mastered

Answer: A

Explanation:

1) upload all the images 2.) Get suggested tags 3.) Review the suggestions and confirm the tags

NEW QUESTION 246

HOTSPOT - (Topic 3)

You have a Computer Vision resource named contoso1 that is hosted in the West US Azure region.

You need to use contoso1 to make a different size of a product photo by using the smart cropping feature.

How should you complete the API URL? To answer, select the appropriate options in the answer area.

NOTE: Each correct selection is worth one point.

```
curl -H "Ocp-Apim-Subscription-Key: xxx" /
-o "sample.png" -H "Content-Type: application/json" /
/vision/v3.1/
?width=100&height=100&smartCropping=true" /
-d "{\"url\": \"https://upload.litwareinc.org/litware/bicycle.jpg\"}"
```

URL Options	API Options
<input type="checkbox"/> https://api.projectoxford.ai <input type="checkbox"/> https://contoso1.cognitiveservices.azure.com <input type="checkbox"/> https://westus.api.cognitive.microsoft.com	<input type="checkbox"/> areaOfInterest <input type="checkbox"/> detect <input type="checkbox"/> generateThumbnail

- A. Mastered
- B. Not Mastered

Answer: A

Explanation:

westus.api.cognitive.microsoft.com generateThumbnail

<https://docs.microsoft.com/en-us/rest/api/computervision/3.1/generate-thumbnail/generate-thumbnail#examples>

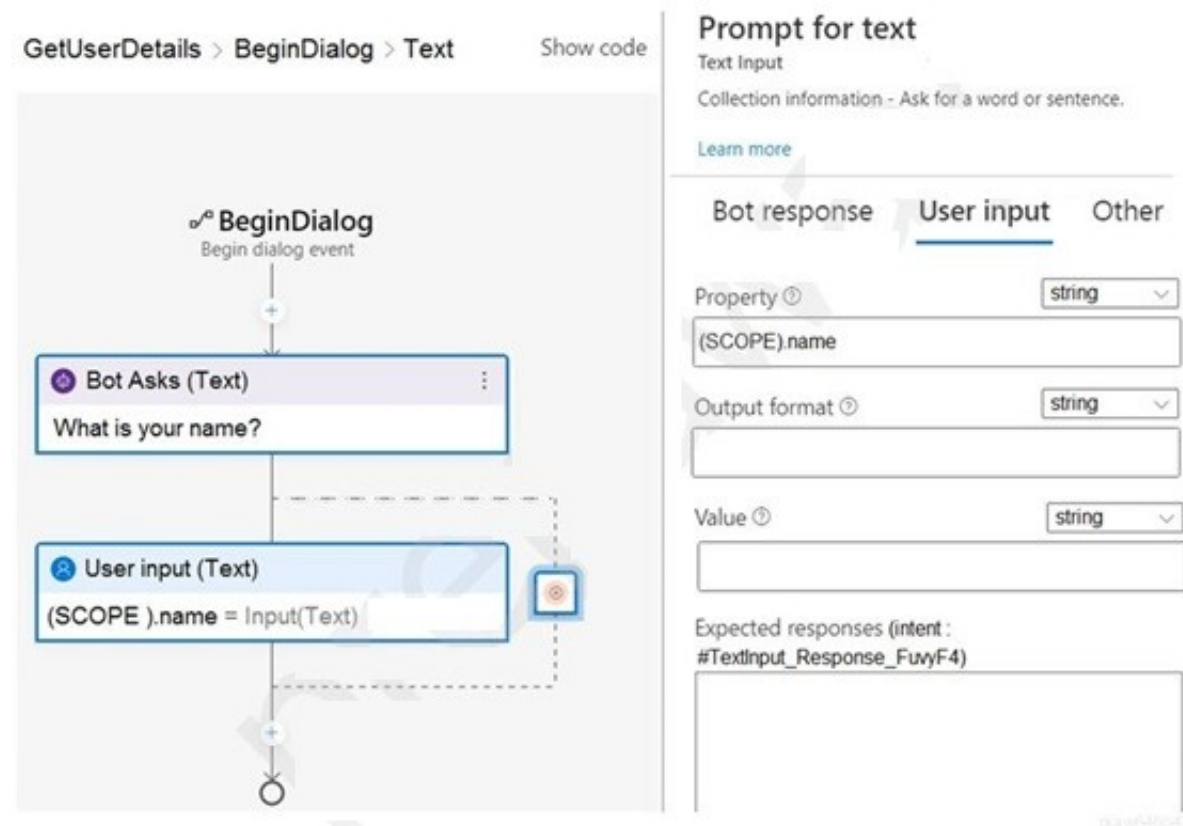
POST

<https://westus.api.cognitive.microsoft.com/vision/v3.1/generateThumbnail?width=500&height=500&smartCropping=True>
Ocp-Apim-Subscription-Key: {API key}

NEW QUESTION 251

- (Topic 3)

You are building a chatbot by using the Microsoft Bot Framework Composer as shown in the exhibit. (Click the Exhibit tab.)



The chatbot contains a dialog named GetUserDetails. GetUserDetails contains a TextInput control that prompts users for their name. The user input will be stored in a property named name.

You need to ensure that you can dispose of the property when the last active dialog ends. Which scope should you assign to name?

- A. dialog
- B. user
- C. turn
- D. conversation

Answer: A

Explanation:

The dialog scope associates properties with the active dialog. Properties in the dialog scope are retained until the dialog ends.

Reference:

<https://docs.microsoft.com/en-us/composer/concept-memory?tabs=v2x>

NEW QUESTION 253

- (Topic 3)

What is a primary characteristic of a relational database?

- A. data is queried and manipulated by using a variant of the SQL language
- B. a lack of dependencies between tables
- C. a flexible data structure
- D. a large amount of duplicate data

Answer: C

NEW QUESTION 256

HOTSPOT - (Topic 3)

You are developing a text processing solution. You develop the following method.

```
static void GetKeyPhrases(TextAnalyticsClient textAnalyticsClient, string text)
{
    var response = textAnalyticsClient.ExtractKeyPhrases(text);
    Console.WriteLine("Key phrases:");

    foreach (string keyphrase in response.Value)
    {
        Console.WriteLine($"{keyphrase}");
    }
}
```

You call the method by using the following code. GetKeyPhrases(textAnalyticsClient, "the cat sat on the mat");

For each of the following statements, select Yes if the statement is true. Otherwise, select No.

NOTE: Each correct selection is worth one point.

Answer Area

Statements	Yes	No
The call will output key phrases from the input string to the console.	<input type="radio"/>	<input type="radio"/>
The output will contain the following words: the, cat, sat, on, and mat.	<input type="radio"/>	<input type="radio"/>
The output will contain the confidence level for key phrases.	<input type="radio"/>	<input type="radio"/>

- A. Mastered
- B. Not Mastered

Answer: A

Explanation:

Box 1: Yes
The Key Phrase Extraction API evaluates unstructured text, and for each JSON document, returns a list of key phrases.
Box 2: No
'the' is not a key phrase.
This capability is useful if you need to quickly identify the main points in a collection of documents. For example, given input text "The food was delicious and there were wonderful staff", the service returns the main talking points: "food" and "wonderful staff".
Box 3: No
Key phrase extraction does not have confidence levels.

NEW QUESTION 259

DRAG DROP - (Topic 3)
You have a factory that produces cardboard packaging for food products. The factory has intermittent internet connectivity. The packages are required to include four samples of each product. You need to build a Custom Vision model that will identify defects in packaging and provide the location of the defects to an operator. The model must ensure that each package contains the four products. Which project type and domain should you use? To answer, drag the appropriate options to the correct targets. Each option may be used once, more than once, or not at all. You may need to drag the split bar between panes or scroll to view content
NOTE: Each correct selection is worth one point.

Options

Food

General

General (compact)

Image classification

Logo

Object detection

Answer Area

Project type:

Domain:

- A. Mastered
- B. Not Mastered

Answer: A

Explanation:

Options

Food

General

General (compact)

Image classification

Logo

Object detection

Answer Area

Project type:

Object detection

Domain:

Food

NEW QUESTION 262

- (Topic 3)
You are developing a method for an application that uses the Translator API. The method will receive the content of a webpage, and then translate the content into Greek (el). The result will also contain a transliteration that uses the Roman alphabet. You need to create the URI for the call to the Translator API. You have the following URI. <https://api.cognitive.microsofttranslator.com/translate?api-version=3.0> Which three additional query parameters should you include in the URI? Each correct answer presents part of the solution. (Choose three.)
NOTE: Each correct selection is worth one point.

- A. toScript=Cyrl
- B. from=el
- C. textType=html

- D. to=el
- E. textType=plain
- F. toScript=Latn

Answer: ADF

Explanation:

C: textType is an optional parameter. It defines whether the text being translated is plain text or HTML text (used for web pages).

D: to is a required parameter. It specifies the language of the output text. The target language must be one of the supported languages included in the translation scope.

F: toScript is an optional parameter. It specifies the script of the translated text. We use Latin (Roman alphabet) script.

Reference:

<https://docs.microsoft.com/en-us/azure/cognitive-services/translator/reference/v3-0-translate>

NEW QUESTION 265

DRAG DROP - (Topic 3)

You have a chatbot that uses a QnA Maker application.

You enable active learning for the knowledge base used by the QnA Maker application. You need to integrate user input into the model.

Which four actions should you perform in sequence? To answer, move the appropriate actions from the list of actions to the answer area and arrange them in the correct order.

Actions

Answer Area

- Add a task to the Azure resource.
- Approve and reject suggestions.
- Publish the knowledge base.
- Modify the automation task logic app to run an Azure Resource Manager template that creates the Azure Cognitive Services resource.
- For the knowledge base, select Show active learning suggestions.
- Save and train the knowledge base.
- Select the properties of the Azure Cognitive Services resource.



- A. Mastered
- B. Not Mastered

Answer: A

Explanation:

Step 1: For the knowledge base, select Show active learning suggestions.

In order to see the suggested questions, on the Edit knowledge base page, select View Options, then select Show active learning suggestions.

Step 2: Approve and reject suggestions.

Each QnA pair suggests the new question alternatives with a check mark, , to accept the question or an x to reject the suggestions. Select the check mark to add the question.

Step 3: Save and train the knowledge base.

Select Save and Train to save the changes to the knowledge base. Step 4: Publish the knowledge base.

Select Publish to allow the changes to be available from the GenerateAnswer API.

When 5 or more similar queries are clustered, every 30 minutes, QnA Maker suggests the alternate questions for you to accept or reject.

NEW QUESTION 270

- (Topic 1)

You are developing the smart e-commerce project.

You need to implement autocompletion as part of the Cognitive Search solution. Which three actions should you perform? Each correct answer presents part of the solution. (Choose three.)

NOTE: Each correct selection is worth one point.

- A. Make API queries to the autocomplete endpoint and include suggesterName in the body.
- B. Add a suggester that has the three product name fields as source fields.
- C. Make API queries to the search endpoint and include the product name fields in the searchFields query parameter.
- D. Add a suggester for each of the three product name fields.
- E. Set the searchAnalyzer property for the three product name variants.

F. Set the analyzer property for the three product name variants.

Answer: ABF

Explanation:

Scenario: Support autocomplete and autosuggestion based on all product name variants. A: Call a suggester-enabled query, in the form of a Suggestion request or Autocomplete

request, using an API. API usage is illustrated in the following call to the Autocomplete REST API.

POST /indexes/myxboxgames/docs/autocomplete?search&api-version=2020-06-30

```
{  
  "search": "minecraf", "suggesterName": "sg"  
}
```

B: In Azure Cognitive Search, typeahead or "search-as-you-type" is enabled through a suggester. A suggester provides a list of fields that undergo additional tokenization, generating prefix sequences to support matches on partial terms. For example, a suggester that includes a City field with a value for "Seattle" will have prefix combinations of "sea", "seat", "seatt", and "seattl" to support typeahead.

F. Use the default standard Lucene analyzer ("analyzer": null) or a language analyzer (for example, "analyzer": "en.Microsoft") on the field.

Reference:

<https://docs.microsoft.com/en-us/azure/search/index-add-suggesters>

NEW QUESTION 273

.....

Thank You for Trying Our Product

We offer two products:

1st - We have Practice Tests Software with Actual Exam Questions

2nd - Questons and Answers in PDF Format

AI-102 Practice Exam Features:

- * AI-102 Questions and Answers Updated Frequently
- * AI-102 Practice Questions Verified by Expert Senior Certified Staff
- * AI-102 Most Realistic Questions that Guarantee you a Pass on Your FirstTry
- * AI-102 Practice Test Questions in Multiple Choice Formats and Updatesfor 1 Year

100% Actual & Verified — Instant Download, Please Click
[Order The AI-102 Practice Test Here](#)