

## Exam Questions AZ-800

Administering Windows Server Hybrid Core Infrastructure

<https://www.2passeasy.com/dumps/AZ-800/>



### NEW QUESTION 1

SIMULATION - (Topic 4)

Task 9

You plan to create group managed service accounts (gMSAs).

You need to configure the domain to support the creation of gMSAs.

- A. Mastered
- B. Not Mastered

**Answer:** A

#### Explanation:

To configure the domain to support the creation of gMSAs, you need to perform the following steps:

? On a domain controller or a computer that has the Remote Server Administration

Tools (RSAT) installed, open PowerShell as an administrator and run the following command to install the Active Directory module:

Install-WindowsFeature -Name RSAT-AD-PowerShell

? Run the following command to create a Key Distribution Service (KDS) root key, which is required for generating passwords for gMSAs. You only need to do this once per domain:

Add-KdsRootKey -EffectiveImmediately

? Wait for at least 10 hours for the KDS root key to replicate to all domain controllers in the domain. Alternatively, you can use the -EffectiveTime parameter to specify a past date and time for the KDS root key, but this is not recommended for security reasons. For more information, see Add-KdsRootKey.

? After the KDS root key is replicated, you can create and configure gMSAs using

the New-ADServiceAccount and Set-ADServiceAccount cmdlets. For more information, see Create a gMSA and Configure a gMSA.

### NEW QUESTION 2

SIMULATION - (Topic 4)

Task 10

You need to configure Hyper-V to ensure that running virtual machines can be moved between SRV1 and SRV2 without downtime.

You do NOT need to move any virtual machines at this time.

- A. Mastered
- B. Not Mastered

**Answer:** A

#### Explanation:

One possible solution to configure Hyper-V to ensure that running virtual machines can be moved between SRV1 and SRV2 without downtime is to use Live Migration. Live Migration is a feature of Hyper-V that allows you to move a running virtual machine from one host to another without any noticeable interruption of service. To set up Live Migration between SRV1 and SRV2, you need to perform the following steps:

? On both SRV1 and SRV2, open Hyper-V Manager from the Administrative

Tools menu or by typing virtmgmt.msc in the Run box.

? In the left pane, right-click on the name of the server and select Hyper-V Settings.

? In the Hyper-V Settings dialog box, select Live Migrations in the navigation pane.

? Check the box Enable incoming and outgoing live migrations.

? Under Authentication protocol, select the method that you want to use to authenticate the live migration traffic between the servers. You can choose either Kerberos or CredSSP. Kerberos does not require you to sign in to the source server before starting a live migration, but it requires you to configure constrained delegation on the domain controller. CredSSP does not require you to configure constrained delegation, but it requires you to sign in to the source server through a local console session, a Remote Desktop session, or a remote Windows PowerShell session. For more information on how to configure constrained delegation, see Configure constrained delegation.

? Under Performance options, select the option that best suits your network configuration and performance requirements. You can choose either TCP/IP or Compression or SMB. TCP/IP uses a single TCP connection for the live migration traffic. Compression uses multiple TCP connections and compresses the live migration traffic to reduce the migration time and network bandwidth usage. SMB uses the Server Message Block (SMB) 3.0 protocol and can leverage SMB features such as SMB Multichannel and SMB Direct. For more information on how to choose the best performance option, see Choose a live migration performance option.

? Under Advanced Features, you can optionally enable the Use any available network for live migration option, which allows Hyper-V to use any available network adapter on the source and destination servers for live migration. If you do not enable this option, you need to specify one or more network adapters to be used for live migration by clicking on the Add button and selecting the network adapter from the list. You can also change the order of preference by using the Move Up and Move Down buttons.

? Click OK to apply the settings.

Now, you have configured Hyper-V to enable live migration between SRV1 and SRV2. You can use Hyper-V Manager or Windows PowerShell to initiate a live migration of a running virtual machine from one server to another.

### NEW QUESTION 3

SIMULATION - (Topic 4)

Task 1

You need to prevent domain users from saving executable files in a share named

\\SRV1\Data. The users must be able to save other files to the share.

- A. Mastered
- B. Not Mastered

**Answer:** A

#### Explanation:

One possible solution to prevent domain users from saving executable files in a share named \\SRV1\Data is to use file screening on the file server. File screening allows you to block certain files from being saved based on their file name extension. Here are the steps to configure file screening:

? On the file server, open File Server Resource Manager from the Administrative Tools menu.

? In the left pane, expand File Screening Management and click on File Groups.

? Right-click on File Groups and select Create File Group.

? In the File Group Properties dialog box, enter a name for the file group, such as Executable Files.  
? In the Files to include box, enter the file name extensions that you want to block, such as .exe, .bat, .cmd, .com, .msi, .scr. You can use wildcards to specify multiple extensions, such as \*.exe.  
? Click OK to create the file group.  
? In the left pane, click on File Screen Templates.  
? Right-click on File Screen Templates and select Create File Screen Template.  
such as Block Executable Files.  
? In the File Screen Template Properties dialog box, enter a name for the template.  
? On the Settings tab, select the option Active screening. Do not allow users to save unauthorized files.  
? On the File Groups tab, check the box next to the file group that you created, such as Executable Files.  
? On the Notification tab, you can configure how to notify users and administrators when a file screening event occurs, such as sending an email, logging an event, or running a command or script. You can also customize the message that users see when they try to save a blocked file.  
? Click OK to create the file screen template.  
? In the left pane, click on File Screens.  
? Right-click on File Screens and select Create File Screen.  
? In the Create File Screen dialog box, enter the path of the folder that you want to apply the file screening to, such as \SRV\Data.  
? Select the option Derive properties from this file screen template (recommended) and choose the template that you created, such as Block Executable Files.  
? Click Create to create the file screen.  
Now, domain users will not be able to save executable files in the share named \SRV\Data. They will be able to save other files to the share.

#### NEW QUESTION 4

SIMULATION - (Topic 4)

Task 11

You need to ensure that all DHCP clients that get an IP address from SRV1 will be configured to use DC1 as a DNS server.

- A. Mastered
- B. Not Mastered

**Answer: A**

#### Explanation:

One possible solution to ensure that all DHCP clients that get an IP address from SRV1 will be configured to use DC1 as a DNS server is to use the DHCP scope options. DHCP scope options are settings that apply to all DHCP clients that obtain an IP address from a specific scope. You can use the DHCP scope options to specify the DNS server IP address, as well as other parameters such as the default gateway, the domain name, and the DNS suffix. Here are the steps to configure the DHCP scope options on SRV1:  
? On SRV1, open DNS Manager from the Administrative Tools menu or by typing dnsmgmt.msc in the Run box.  
? In the left pane, expand your DHCP server and click on IPv4.  
? In the right pane, right-click on the scope that you want to configure and select Properties.  
? In the Scope Properties dialog box, click on the DNS tab.  
? Check the box Enable DNS dynamic updates according to the settings below. This option allows the DHCP server to register and update the DNS records for the DHCP clients.  
? Select the option Always dynamically update DNS records. This option ensures that the DHCP server updates both the A and PTR records for the DHCP clients, regardless of whether they request or support dynamic updates.  
? Check the box Discard A and PTR records when lease is deleted. This option allows the DHCP server to delete the DNS records for the DHCP clients when their leases expire or are released.  
? Check the box Dynamically update DNS records for DHCP clients that do not request updates. This option allows the DHCP server to update the DNS records for the DHCP clients that do not support dynamic updates, such as legacy or non-Windows clients.  
? In the DNS servers section, click on the Add button to add a new DNS server IP address.  
? In the Add Server dialog box, enter the IP address of DC1, which is the DNS server that you want to use for the DHCP clients, and click Add.  
? Click OK to close the Add Server dialog box and return to the Scope Properties dialog box.  
? Click OK to apply the changes and close the Scope Properties dialog box.  
Now, all DHCP clients that get an IP address from SRV1 will be configured to use DC1 as a DNS server. You can verify the DNS configuration by using the ipconfig /all command on a DHCP client computer and checking the DNS Servers entry. You can also check the DNS records for the DHCP clients by using the DNS Manager console on DC1.

#### NEW QUESTION 5

SIMULATION - (Topic 4)

Task 8

You need to create an Active Directory Domain Services (AD DS) site named Site2 that is associated to an IP address range of 192.168.2.0 to 192.168.2.255.

- A. Mastered
- B. Not Mastered

**Answer: A**

#### Explanation:

To create an AD DS site named Site2 that is associated to an IP address range of 192.168.2.0 to 192.168.2.255, you can follow these steps:  
? On a domain controller or a computer that has the Remote Server Administration Tools (RSAT) installed, open Active Directory Sites and Services from the Administrative Tools menu or by typing dssite.msc in the Run box.  
? In the left pane, right-click on Sites and select New Site.  
? In the New Object - Site dialog box, enter Site2 as the Name of the new site.  
Select a site link to associate the new site with, such as DEFAULTIPSITELINK, and click OK. You can also create a new site link if you want to customize the replication frequency and schedule between the sites. For more information on how to create a site link, see Create a Site Link.  
? In the left pane, right-click on Subnets and select New Subnet.  
? In the New Object - Subnet dialog box, enter 192.168.2.0/24 as the Prefix of the subnet. This notation represents the IP address range of 192.168.2.0 to 192.168.2.255 with a subnet mask of 255.255.255.0. Select Site2 as the Site object to associate the subnet with, and click OK.  
? Wait for the changes to replicate to other domain controllers. You can verify the site and subnet creation by checking the Sites and Subnets containers in Active Directory Sites and Services.  
Now, you have created an AD DS site named Site2 that is associated to an IP address range of 192.168.2.0 to 192.168.2.255. You can add domain controllers to

the new site and configure the site links and site link bridges to optimize the replication topology.

#### NEW QUESTION 6

SIMULATION - (Topic 4)

Task 3

You need to configure SRV1 as a DNS server. SRV1 must be able resolve names from the contoso.com domain by using DC1. All other names must be resolved by using the root hint servers.

- A. Mastered
- B. Not Mastered

**Answer:** A

#### Explanation:

One possible solution to configure SRV1 as a DNS server that can resolve names from the contoso.com domain by using DC1 and all other names by using the root hint servers is to use conditional forwarding. Conditional forwarding allows a DNS server to forward queries for a specific domain name to another DNS server, while using the normal forwarding or root hint servers for other queries. Here are the steps to configure conditional forwarding on SRV1:

? On SRV1, open DNS Manager from the Administrative Tools menu or by typing dnsmgmt.msc in the Run box.

? In the left pane, right-click on Conditional Forwarders and select New Conditional Forwarder.

? In the New Conditional Forwarder dialog box, enter contoso.com as the DNS Domain name.

? In the IP addresses of the master servers box, enter the IP address of DC1, which is the DNS server for the contoso.com domain. You can also click on Resolve to verify the name resolution of DC1.

? Optionally, you can check the box Store this conditional forwarder in Active Directory, and replicate it as follows if you want to store and replicate the conditional forwarder in AD DS. You can also select the replication scope from the drop-down list.

? Click OK to create the conditional forwarder.

Now, SRV1 will forward any queries for the contoso.com domain to DC1, and use the root hint servers for any other queries. You can test the name resolution by using

the nslookup command on SRV1 or another computer that uses SRV1 as its DNS server. For example, you can run the following commands:

```
nslookup www.contoso.com nslookup www.microsoft.com
```

The first command should return the IP address of www.contoso.com from DC1, and the second command should return the IP address of www.microsoft.com from a root hint server.

#### NEW QUESTION 7

SIMULATION - (Topic 4)

Task 4

You need to register SRV1 to sync Azure file shares The registration must use the 34646045 Storage Sync Service.

The required source files are located in a folder named \\dc1.contoso.com\install.

You do NOT need to configure file share synchronization at this time and you do NOT need to update the agent.

- A. Mastered
- B. Not Mastered

**Answer:** A

#### Explanation:

One possible solution to register SRV1 to sync Azure file shares using the 34646045 Storage Sync Service is to use the Register-AzStorageSyncServer cmdlet from the Az.StorageSync module. This cmdlet establishes a trust relationship between the server

and the Storage Sync Service, which is required for creating server endpoints and syncing files. Here are the steps to register SRV1

using the cmdlet:

? On SRV1, open PowerShell as an administrator and run the following command to

install the Az.StorageSync module if it is not already installed: `Install-Module -Name Az.StorageSync`

? Run the following command to import the Az.StorageSync module:

```
Import-Module -Name Az.StorageSync
```

? Run the following command to sign in to your Azure account and select the subscription that contains the 34646045 Storage Sync Service:

```
Connect-AzAccount
```

```
Select-AzSubscription -SubscriptionId <your-subscription-id>
```

? Run the following command to register SRV1 with the 34646045 Storage Sync Service. You need to specify the resource group name and the Storage Sync Service name as parameters:

```
Register-AzStorageSyncServer -ResourceGroupName <your-resource-group-name> -StorageSyncServiceName 34646045
```

? Wait for the registration to complete. You can verify the registration status by

checking the Registered servers tab on the Azure portal or by running the following command:

```
Get-AzStorageSyncServer -ResourceGroupName <your-resource-group-name> -StorageSyncServiceName 34646045
```

Now, SRV1 is registered with the 34646045 Storage Sync Service and ready to sync Azure file shares. You can create server endpoints on SRV1 and cloud endpoints on the Azure file shares to define the sync topology.

#### NEW QUESTION 8

SIMULATION - (Topic 4)

Task 5

You need to ensure that a DHCP scope named scope1 on SRV1 can service client requests.

- A. Mastered
- B. Not Mastered

**Answer:** A

#### Explanation:

One possible solution to ensure that a DHCP scope named scope1 on SRV1 can service client requests is to activate the scope on the DHCP server. A scope must be activated before it can assign IP addresses to DHCP clients. To activate a DHCP scope on SRV1, perform the following steps:

? On SRV1, open DNS Manager from the Administrative Tools menu or by



typing dnsmgmt.msc in the Run box.

? In the left pane, expand your DHCP server and click on IPv4.

? In the right pane, right-click on the scope that you want to activate, such as scope1, and select Activate.

? Wait for the scope to be activated. You can verify the activation status by checking the icon next to the scope name. A green arrow indicates that the scope is active, while a red arrow indicates that the scope is inactive.

Now, the DHCP scope named scope1 on SRV1 can service client requests and lease IP addresses to DHCP clients. You can test the DHCP service by using the ipconfig

/renew command on a DHCP client computer that is connected to the same subnet as the scope.

## NEW QUESTION 9

SIMULATION - (Topic 4)

Task 6

You need to ensure that you can manage DC1 by using Windows Admin Center on SRV1. The required source files are located in a folder named \\dc1.contoso.com\install.

A. Mastered

B. Not Mastered

**Answer: A**

### Explanation:

One possible solution to ensure that you can manage DC1 by using Windows Admin Center on SRV1 is to install Windows Admin Center on SRV1 and add DC1 as a managed server. Windows Admin Center is a web-based management tool that allows you to manage servers, clusters, Windows PCs, and Azure virtual machines (VMs) from a single interface. Here are the steps to install Windows Admin Center on SRV1 and add DC1 as a managed server:

? On SRV1, open a web browser and go to the folder named

\\dc1.contoso.com\install. Download the Windows Admin Center installer file (WindowsAdminCenter.msi) and save it to a local folder, such as C:\Temp.

? Run the Windows Admin Center installer file and follow the installation wizard. You

can choose to install Windows Admin Center as a desktop app or as a service. For more information on how to install Windows Admin Center, see Install Windows Admin Center.

? After the installation is complete, launch Windows Admin Center from the Start

menu or the desktop shortcut. If you installed Windows Admin Center as a service, you can access it from a web browser by using the URL https://localhost:6516 or https://<SRV1>:6516, where <SRV1> is the name or IP address of SRV1.

? On the Windows Admin Center dashboard, click Add to add a new connection.

Select Server as the connection type and enter the name or IP address of DC1 in the Server name field. Optionally, you can specify the display name, description, and tags for the connection. Click Submit to add DC1 as a managed server.

? On the Windows Admin Center dashboard, you should see DC1 listed under the

Servers section. Click on DC1 to open the server overview page. From here, you can manage various aspects of DC1, such as roles and features, certificates, devices, events, files, firewall, processes, registry, services, and more. For more information on how to use Windows Admin Center to manage servers, see Manage servers with Windows Admin Center.

Now, you can manage DC1 by using Windows Admin Center on SRV1. You can also add more servers or other types of connections to Windows Admin Center and manage them from the same interface

## NEW QUESTION 10

HOTSPOT - (Topic 3)

Your network contains an Active Directory Domain Services (AD DS) forest named contoso.com. The forest contains a child domain named east.contoso.com and the servers shown in the following table.

Name	Domain	Description
DC1	contoso.com	Has the schema master, infrastructure master, and domain naming master roles
DC2	east.contoso.com	Has the PDC emulator and RID master roles and is a global catalog server
Server1	contoso.com	Has the File Server, DFS Namespaces, and DFS Replication server roles

You need to create a folder for the Central Store to manage Group Policy template files for the entire forest.

What should you name the folder, and on which server should you create the folder? To answer, select the appropriate options in the answer area.

NOTE: Each correct selection is worth one point.

Answer Area

Name:  These are the selections for Name:

Server:

A. Mastered

B. Not Mastered

**Answer: A**

### Explanation:

Answer Area

Name: PolicyDefinitions  
CentralDefinitions  
PolicyDefinitions  
TemplateDefinitions

Server: Server1 only  
DC1 only  
DC2 only  
Server1 only  
DC1 and DC2 only  
DC1, DC2, and Server1

NEW QUESTION 10

HOTSPOT - (Topic 3)

You have an Active Directory Domain Services (AD DS) domain that contains a group named Group1.

You need to create a group managed service account (gMSA) named Account1. The solution must ensure that Group1 can use Account1.

How should you complete the script? To answer, select the appropriate options in the answer area.

NOTE: Each correct selection is worth one point.

Answer Area

New-ADServiceAccount  
Add-ADComputerServiceAccount  
Install-ADServiceAccount  
New-ADObject  
New-ADServiceAccount

"Account1" -DNSHostName "website.contoso.com" -

-PrincipalsAllowedToDelegateToAccount  
AuthenticationPolicy  
-Instance  
-PrincipalsAllowedToDelegateToAccount  
-PrincipalsAllowedToRetrieveManagedPassword

"Group1"

- A. Mastered
- B. Not Mastered

Answer: A

Explanation:

Answer Area

New-ADServiceAccount  
Add-ADComputerServiceAccount  
Install-ADServiceAccount  
New-ADObject  
New-ADServiceAccount

"Account1" -DNSHostName "website.contoso.com" -

-PrincipalsAllowedToDelegateToAccount  
AuthenticationPolicy  
-Instance  
-PrincipalsAllowedToDelegateToAccount  
-PrincipalsAllowedToRetrieveManagedPassword

"Group1"

NEW QUESTION 15

HOTSPOT - (Topic 3)

You have a Windows Server container host named Server1.

You start the containers on Server1 as shown in the following table.

Name	Image	Uses Hyper-V isolation	Process running on container
Container1	microsoft/iis	No	ProcessA
Container2	microsoft/iis	No	ProcessB
Container3	microsoft/iis	Yes	ProcessC
Container4	microsoft/iis	Yes	ProcessD

You need to validate the status of ProcessA and ProcessC.

Where can you verify that ProcessA and ProcessC are in a running state? To answer, select the appropriate options in the answer area.

NOTE: Each correct selection is worth one point.

Answer Area

ProcessA: All the containers and Server1  
Container1 only  
Container1 and Container2 only  
Container1 and Server1 only  
Container1, Container2, and Server1 only  
All the containers and Server1

ProcessC: Container3 and Server1 only  
Container3 only  
Container3 and Container4 only  
Container3 and Server1 only  
Container3, Container4, and Server1 only  
All the containers and Server1

- A. Mastered
- B. Not Mastered

Answer: A

Explanation:

Answer Area

ProcessA: All the containers and Server1

ProcessC: Container3 and Server1 only

NEW QUESTION 20

- (Topic 3)

You have a server that runs Windows Server and contains a shared folder named UserData.

You need to limit the amount of storage space that each user can consume in UserData. What should you use?

- A. Storage Spaces
- B. Work Folders
- C. Distributed File System (DFS) Namespaces
- D. File Server Resource Manager (FSRM)

Answer: D

Explanation:

Reference:

<https://docs.microsoft.com/en-us/windows-server/storage/fsrm/fsrm-overview>

NEW QUESTION 24

- (Topic 3)

You have an Active Directory Domain Services (AD DS) domain. The domain contains three servers named Server 1, Server2, and Server3 that run Windows Server.

You sign in to Server1 by using a domain account and start a remote PowerShell session to Server2. From the remote PowerShell session, you attempt to access a resource on Server3. but access to the resource is denied.

You need to ensure that your credentials are passed from Server1 to Server3. The solution must minimize administrative effort. What should you do?

- A. Configure Kerberos constrained delegation.
- B. Configure Just Enough Administration (JEA).
- C. Configure selective authentication for the domain.
- D. Disable the Enforce user logon restrictions policy setting for the domain.

Answer: A

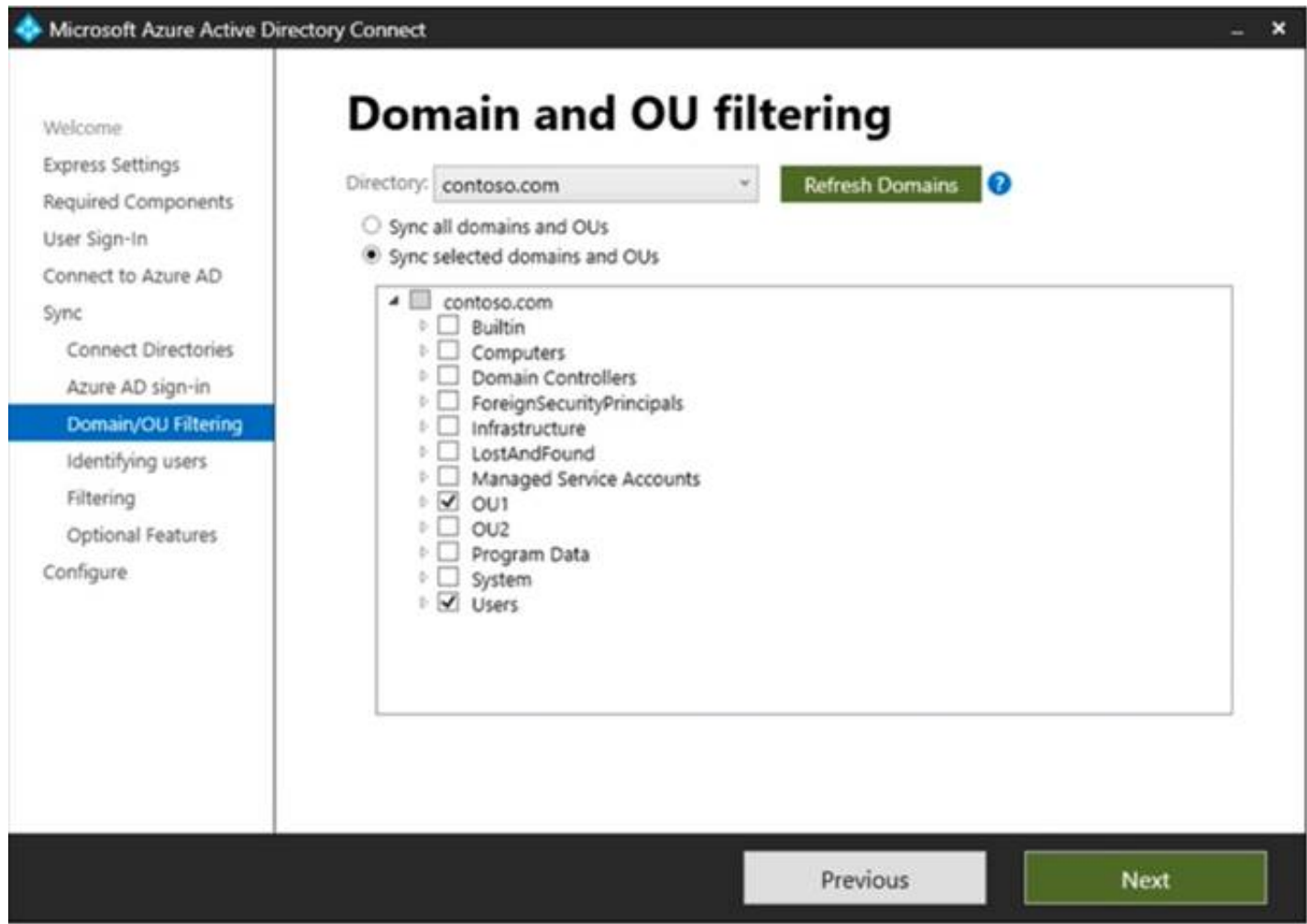
NEW QUESTION 29

HOTSPOT - (Topic 3)

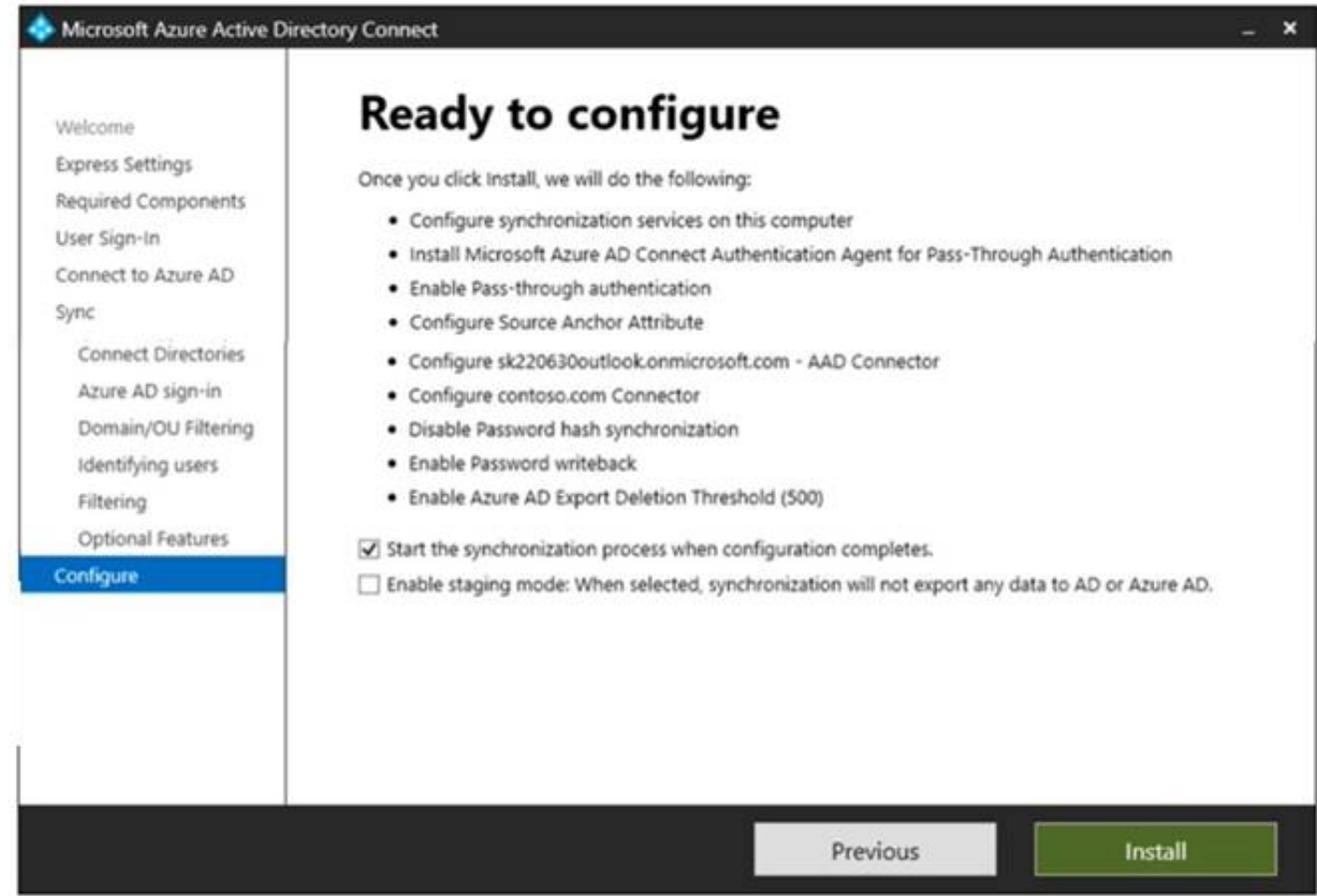
Your network contains an on-premises Active Directory Domain Services (AD DS) domain named contoso.com that syncs with an Azure AD tenant. The tenant contains a group named Group1 and the users shown in the following table.

Name	In organizational unit (OU)
User1	OU1
User2	OU2

Domain/OU filtering in Azure AD Connect is configured as shown in the Filtering exhibit. (Click the Filtering tab.)



You review the Azure AD Connect configurations as shown in the Configure exhibit. (Click the Configure tab.)



For each of the following statements, select Yes if the statement is true. Otherwise, select No. NOTE: Each correct selection is worth one point.

Answer Area

Statements	Yes	No
User1 can use self-service password reset (SSPR) to reset his password.	<input type="radio"/>	<input type="radio"/>
If User1 connects to Microsoft Exchange Online, an on-premises domain controller provides authentication.	<input type="radio"/>	<input type="radio"/>
You can add User2 to Group1 as a member.	<input type="radio"/>	<input type="radio"/>

- A. Mastered
- B. Not Mastered

Answer: A

Explanation:



Answer Area

Statements	Yes	No
User1 can use self-service password reset (SSPR) to reset his password.	<input type="radio"/>	<input checked="" type="radio"/>
If User1 connects to Microsoft Exchange Online, an on-premises domain controller provides authentication.	<input type="radio"/>	<input checked="" type="radio"/>
You can add User2 to Group1 as a member.	<input type="radio"/>	<input checked="" type="radio"/>

NEW QUESTION 30

DRAG DROP - (Topic 3)

Your network contains a single domain Active Directory Domain Services (AD DS) forest named contoso.com. The forest contains a single Active Directory site. You plan to deploy a read only domain controller (RODC) to a new datacenter on a server named Server1. A user named User1 is a member of the local Administrators group on Server1.

You need to recommend a deployment plan that meets the following requirements:

- ? Ensures that a user named User1 can perform the RODC installation on Server1
- ? Ensures that you can control the AD DS replication schedule to the Server1
- ? Ensures that Server1 is in a new site named RemoteSite1
- ? Uses the principle of least privilege

Which three actions should you recommend performing in sequence? To answer, move the appropriate actions from the list of actions to the answer area and arrange them in the correct order.

Actions

Instruct User1 to run the Active Directory Domain Services installation Wizard on Server1.

Create a site and a subnet.

Create a site link.

Pre-create an RODC account.

Add User1 to the Contoso\Administrators group.

Answer Area

>

<

- A. Mastered
- B. Not Mastered

Answer: A

Explanation:

Box 1.

We need to create a site and subnet for the remote site. The new site will be added to the Default IP Site Link so we don't need to create a new site link. You configure the replication schedule on the site link.

Box 2.

When we pre-create an RODC account, we can specify who is allowed to attach the server to the prestaged account. This means that the User1 does not need to be added to the Domain Admins group.

Box3.

User1 can connect the RODC to the prestaged account by running the AD DS installation wizard.

NEW QUESTION 32

- (Topic 3)

Your network contains an on-premises Active Directory Domain Services (AD DS) domain named contoso.com. The domain contains three servers that run Windows Server and have the Hyper-V server role installed. Each server has a Switch Embedded Teaming (SET) team.

You need to verify that Remote Direct Memory Access (RDMA) and required Windows Server settings are configured properly on each server to support a failover cluster.

What should you use?

- A. the validate-DCB cmdlet
- B. Server Manager
- C. the Get-NetAdapter cmdlet
- D. Failover Cluster Manager

Answer: A

NEW QUESTION 36

- (Topic 3)

Your network contains a DHCP server.

You plan to add a new subnet and deploy Windows Server to the subnet. You need to use the server as a DHCP relay agent.

Which role should you install on the server?

- A. Network Policy and Access Services

- B. Remote Access
- C. Network Controller
- D. DHCP Server

**Answer:** B

#### NEW QUESTION 39

- (Topic 3)

Your network contains a single-domain Active Directory Domain Services (AD DS) forest named conto.com. The forest contains the servers shown in the following exhibit table.

Name	Description
DC1	Domain controller
Server1	Member server

You plan to install a line-of-business (LOB) application on Server1. The application will install a custom windows services.

A new corporate security policy states that all custom Windows services must run under the context of a group managed service account (gMSA). You deploy a root key.

You need to create, configure, and install the gMSA that will be used by the new application.

Which two actions should you perform? Each correct answer presents part of the solution. NOTE: Each correct selection is worth one point.

- A. On Server1, run the install-ADServiceAccount cmdlet.
- B. On DC1, run the New-ADServiceAccount cmdlet.
- C. On DC1, run the Set\_ADComputer cmdlet.
- D. ON DC1, run the Install-ADServiceAccount cmdlet.
- E. On Server1, run the Get-ADServiceAccount cmdlet.

**Answer:** AB

#### NEW QUESTION 43

- (Topic 3)

You have an Azure virtual machine named Server1 that runs a network management application. Server1 has the following network configuration.

- \* Network interface.Nic1
- \* IP address 10.1.1.1/24
- \* Connected to: Vnet1/Subnet1

You need connect Server1 to an additional subnet named Vnet1/Subnet2. What should you do?

- A. Create a private endpoint on Subnet2
- B. Add a network interface to server1.
- C. Modify the IP configurations of Nic1.
- D. Add an IP configuration to Nic1.

**Answer:** B

#### NEW QUESTION 46

- (Topic 3)

You have an on-premises Active Directory Domain Services (AD DS) domain named contoso.com that syncs with Azure AD by using A2zure AD Connect.

You enable password protection for contoso.com.

You need to prevent users from including the word Contoso as part of their password. What should you use?

- A. the Azure Active Directory admin center
- B. Active Directory Users and Computers
- C. Synchronization Service Manager
- D. Windows Admin Center

**Answer:** D

#### NEW QUESTION 48

HOTSPOT - (Topic 3)

You plan w deploy an Azure virtual machine that win run Windows Server. The virtual machine will host an Active Directory Domain Services (AD DS) domain controller and a drive named f: on a new virtual disk.

You need to configure storage for the virtual machine. The solution must meet the following requirements

- Maximize resiliency for AD DS.
- Prevent accidental data loss.

How should you configure the storage? To answer, select the appropriate options in the answer area.

NOTE: Each correct selection is worth one point.

Answer Area

Volume for the AD DS database:

Caching configuration for the volume that hosts the database:

Answer:

Answer Area



- A. Mastered
- B. Not Mastered

Answer: A

NEW QUESTION 49

DRAG DROP - (Topic 3)

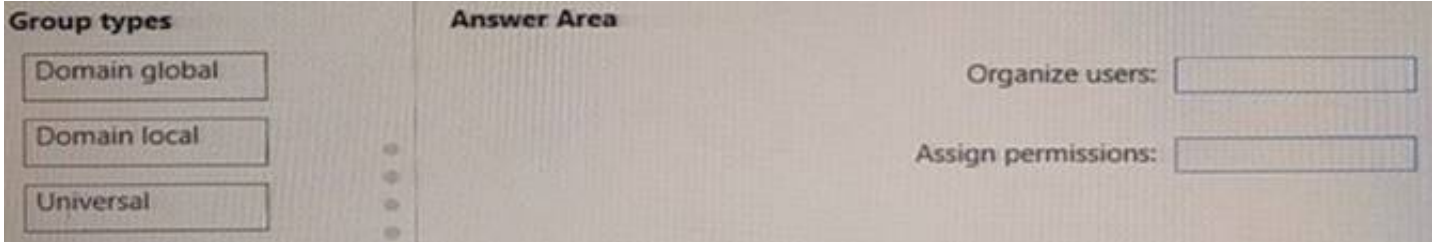
Your network contains two Active Directory Domain Services (AD DS) forests named contoso.com and fabrikam.com. Contoso.com contains three child domains named amer.contoso.com, apac.contoso.com, and emea.contoso.com. Fabrikam.com contains a child domain named apac.fabrikam.com. A bidirectional forest trust exists between contoso.com and fabrikam.com.

You need to provide users in the contoso.com forest with access to the resources in the fabrikam.com forest. The solution must meet the following requirements:

- Users in contoso.com must only be added directly to groups in the contoso.com forest.
- Permissions to access the resources in fabrikam.com must only be granted directly to groups in the fabrikam.com forest.
- The number of groups must be minimized.

Which type of groups should you use to organize the users and to assign permissions? To answer, drag the appropriate group types to the correct requirements. Each group type may be used once, more than once, or not at all. You may need to drag the split bar between panes or scroll to view content.

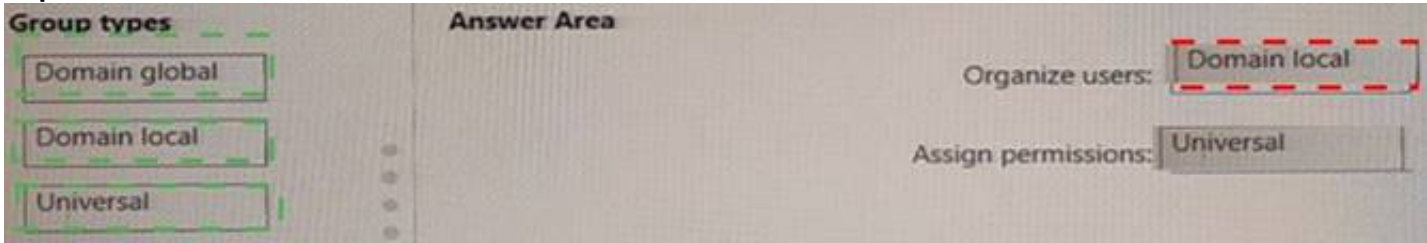
NOTE: Each correct selection is worth one point.



- A. Mastered
- B. Not Mastered

Answer: A

Explanation:



NEW QUESTION 54

- (Topic 3)

You have a server named Host1 that has the Hyper-V server role installed. Host1 hosts a virtual machine named VM1.

You have a management server named Server1 that runs Windows Server. You remotely manage Host1 from Server1 by using Hyper-V Manager.

You need to ensure that you can access a USB hard drive connected to Server1 when you connect to VM1 by using Virtual Machine Connection.

Which two actions should you perform? Each correct answer presents part of the solution. NOTE: Each correct selection is worth one point.

- A. From the Hyper-V Settings of Host1, select Allow enhanced session mode
- B. From Disk Management on Host1, attach a virtual hard disk.
- C. From Virtual Machine Connection, switch to a basic session.
- D. From Virtual Machine Connection select Show Options and then select the USB hard drive.
- E. From Disk Management on Host1, select Rescan Disks

Answer: AD

Explanation:

Reference:

<https://docs.microsoft.com/en-us/windows-server/virtualization/hyper-v/learn-more/use-local-resources-on-hyper-v-virtual-machine-with-vmconnect>

NEW QUESTION 55

DRAG DROP - (Topic 3)

You have a server named Server1 that runs Windows Server and has the Hyper V server role installed. Server1 hosts a virtual machine named VM1. Server1 has an NVMe storage device. The device is currently assigned to VM1 by using Discrete Device Assignment.



You need to make the device available to Server1.

Which four actions should you perform in sequence? To answer, move the appropriate actions from the list of actions to the answer area and arrange them in the correct order.

#### Actions

From Server1, stop VM1.

From Server1, run the Remove-VMAssignableDevice cmdlet.

From Server1, run the Mount-VMHostAssignableDevice cmdlet.

From Server1, enable the device by using Device Manager.

From VM1, disable the device by using Device Manager.

#### Answer Area



- A. Mastered
- B. Not Mastered

**Answer:** A

**Explanation:**

#### Actions

From Server1, stop VM1.

From Server1, run the Remove-VMAssignableDevice cmdlet.

From Server1, run the Mount-VMHostAssignableDevice cmdlet.

From Server1, enable the device by using Device Manager.

From VM1, disable the device by using Device Manager.

#### Answer Area

From Server1, stop VM1.

From Server1, run the Remove-VMAssignableDevice cmdlet.

From Server1, run the Mount-VMHostAssignableDevice cmdlet.

From Server1, enable the device by using Device Manager.



### NEW QUESTION 56

HOTSPOT - (Topic 3)

Your network contains an Active Directory Domain Services (AD DS) domain. The domain contains the domain controllers shown in the following table.

Name	Description
DC1	Has the schema master, infrastructure master, and domain naming master roles
DC2	Has the PDC emulator and RID master roles and is a global catalog server
DC3	None

You need to configure DC3 to be the authoritative time server for the domain.

Which operations master role should you transfer to DC3, and which console should you use? To answer, select the appropriate options in the answer area.

NOTE: Each correct selection is worth one point.

#### Answer Area



- A. Mastered
- B. Not Mastered



Answer: A

Explanation:

Answer Area

Role:

Console:

PDC emulator

Domain naming master

Infrastructure master

PDC emulator

RID master

Schema master

Active Directory Users and Computers

Active Directory Admin

Active Directory Doma

Active Directory Sites

Active Directory Users and Computers

NEW QUESTION 57

DRAG DROP - (Topic 3)

Your network contains an Active Directory domain named contoso.com. The domain contains group managed service accounts (gMSAs). You have a server named Server1 that runs Windows Server and is in a workgroup. Server! hosts Windows containers. You need to ensure that the Windows containers can authenticate to contoso.com. Which three actions should you perform in sequence? To answer, move the appropriate actions from the list of actions to the answer area and arrange them in the correct order.

Actions

On Server1, install and run ccg.exe.

On Server1, run New-CredentialSpec.

In contoso.com, generate a Key Distribution Service (KDS) root key.

In contoso.com, create a gMSA and a standard user account.

From a domain-joined computer, create a credential spec file and copy the file to Server1.

Answer Area

>

<

^

v

- A. Mastered
- B. Not Mastered

Answer: A

Explanation:

Actions

On Server1, install and run ccg.exe.

On Server1, run New-CredentialSpec.

In contoso.com, generate a Key Distribution Service (KDS) root key.

In contoso.com, create a gMSA and a standard user account.

From a domain-joined computer, create a credential spec file and copy the file to Server1.

Answer Area

In contoso.com, generate a Key Distribution Service (KDS) root key.

In contoso.com, create a gMSA and a standard user account.

From a domain-joined computer, create a credential spec file and copy the file to Server1.

>

<

^

v

NEW QUESTION 59

- (Topic 3)

You have an Azure virtual machine named VM1 that runs Windows Server. You perform the following actions on VM1:

- Create a folder named Folder1 on volume C
  - Create a folder named Folder2 on volume D.
  - Add a new data disk to VM1 and create a new volume that is assigned drive letter E.
  - Install an app named App1 on volume E. You plan to resize VM1.
- Which objects will present after you resize VM1?

- A. Folded and Folder2 only
- B. Folder1, volume E, and App1 only
- C. Folder1 only
- D. Folde
- E. Folder2. App1, and volume E

Answer: D

NEW QUESTION 60

- (Topic 3)

You have a server that runs Windows Server and has the DHCP Server role installed. The server has a scope named Scope! that has the following configurations:

- Address range: 192.168.0.2 to 192.16B.1.2M . Mask 255.255.254.0
- Router: 192.168.0.1
- Lease duration: 3 days
- DNS server 172.16.0.254

You have 50 Microsoft Teams Phone devices from the same vendor. All the devices have MAC addresses within the same range. You need to ensure that all the Teams Phone devices that receive a lease from Scope1 have IP addresses in the range of 192.168.1.100 to 192.168.1.200. The solution must NOT affect other DHCP clients that receive IP configurations from Scope1. What should you create?

- A. a policy
- B. a scope
- C. a fitter
- D. scope options

Answer: A

Explanation:

Reference:

[https://docs.microsoft.com/en-us/previous-versions/windows/it-pro/windows-server-2012-R2-and-2012/dn425040\(v=ws.11\)](https://docs.microsoft.com/en-us/previous-versions/windows/it-pro/windows-server-2012-R2-and-2012/dn425040(v=ws.11))

NEW QUESTION 63

- (Topic 3)

Your network contains an Active Directory Domain Services (AD DS) domain named conioso.com.

You need to identify which server is the PDC emulator for the domain.

Solution: from Active Directory Users and Computers, you right-click contoso.com in the console tree, and then select Operations Master

Does this meet the goal?

- A. Yes
- B. No

Answer: A

NEW QUESTION 65

DRAG DROP - (Topic 3)

You create a new Azure subscription.

You plan to deploy Azure Active Directory Domain Services (Azure AD DS) and Azure virtual machines. The virtual machines will be joined to Azure AD DS.

You need to deploy Active Directory Domain Services (AD DS) to ensure that the virtual machines can be deployed and joined to Azure AD DS.

Which three actions should you perform in sequence? To answer, move the appropriate actions from the list of actions to the answer area and arrange them in the correct order.

Actions

Modify the settings of the Azure virtual network.

Install the Active Directory Domain Services role.

Install Azure AD Connect.

Create an Azure virtual network.

Create an Azure AD DS instance.

Run the Active Directory Domain Service installation Wizard.

Answer Area

>

<

- A. Mastered
- B. Not Mastered

Answer: A

Explanation:

Actions

Modify the settings of the Azure virtual network.

Install the Active Directory Domain Services role.

Install Azure AD Connect.

Create an Azure virtual network.

Create an Azure AD DS instance.

Run the Active Directory Domain Service installation Wizard.

Answer Area

Create an Azure virtual network.

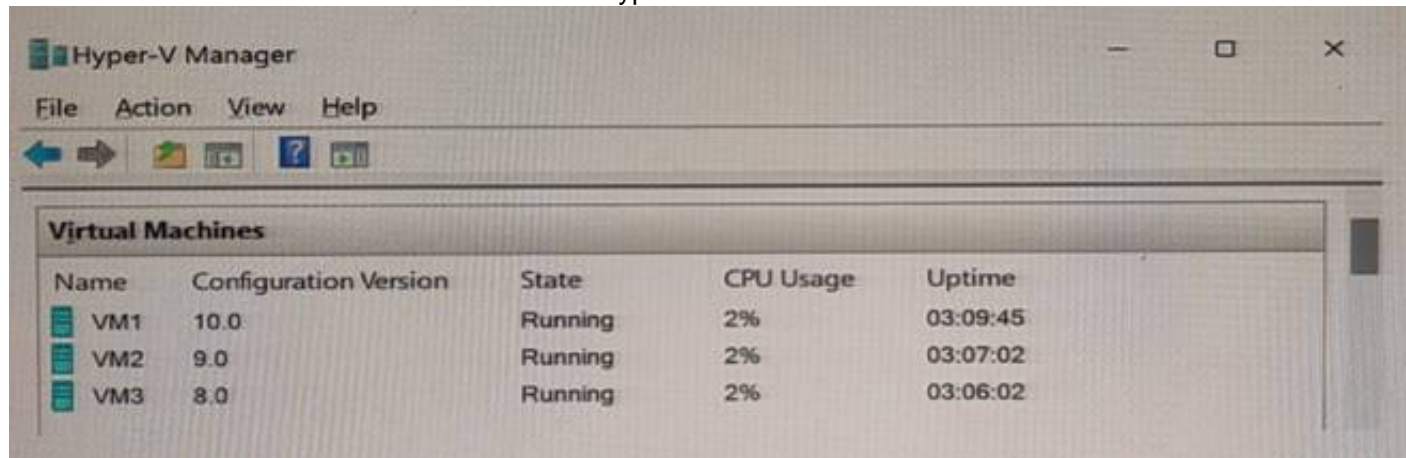
Create an Azure AD DS instance.

> Modify the settings of the Azure virtual network. <

# NEW QUESTION 70

HOTSPOT - (Topic 3)

You have a server named Server1 that has the Hyper-V server role installed. Server1 hosts the virtual machines shown in the following exhibit.



Name	Configuration Version	State	CPU Usage	Uptime
VM1	10.0	Running	2%	03:09:45
VM2	9.0	Running	2%	03:07:02
VM3	8.0	Running	2%	03:06:02

Use the drop-down menus to select the answer choice that completes each statement based on the information presented in the graphic.

NOTE: Each correct selection is worth one point.

**Answer Area**

[Answer choice] can have production checkpoints.

Only VM1  
Only VM1  
Only VM1 and VM2  
VM1, VM2, and VM3

[Answer choice] can be hibernated.

VM1, VM2, and VM3  
Only VM1  
Only VM1 and VM2  
VM1, VM2, and VM3

- A. Mastered
- B. Not Mastered

Answer: A

Explanation:

**Answer Area**

[Answer choice] can have production checkpoints.

Only VM1  
Only VM1  
Only VM1 and VM2  
VM1, VM2, and VM3

[Answer choice] can be hibernated.

VM1, VM2, and VM3  
Only VM1  
Only VM1 and VM2  
VM1, VM2, and VM3

# NEW QUESTION 72

- (Topic 3)

You have an on-premises server named Server1 that runs Windows Server. You have an Azure virtual network that contains an Azure virtual network gateway. You need to connect only Server1 to the Azure virtual network. What should you use?

- A. Azure Network Adapter
- B. a Site-to-Site VPN
- C. an ExpressRoute circuit
- D. Azure Extended Network

Answer: B

Explanation:

Reference:

<https://docs.microsoft.com/en-us/windows-server/manage/windows-admin-center/azure/use-azure-network-adapter>

# NEW QUESTION 77

HOTSPOT - (Topic 3)

Your company has a main office and 10 branch offices that are connected by using WAN links. The network contains an Active Directory domain.

All users have laptops and regularly travel between offices. You plan to implement BranchCache in the branch offices.

In each branch office, you install a server that runs Windows Server and the BranchCache feature. You register the servers in Active Directory.

You need to configure the laptops to use the local BranchCache server automatically. The solution must minimize administrative effort.

Which two Group Policy settings should you configure? To answer, select the settings in the answer area.

NOTE: Each correct selection is worth one point.



Answer Area

Setting	State
Turn on BranchCache	Not configured
Set BranchCache Distributed Cache mode	Not configured
Set BranchCache Hosted Cache mode	Not configured
Enable Automatic Hosted Cache Discovery by Service Connection...	Not configured
Configure Hosted Cache Servers	Not configured
Configure BranchCache for network files	Not configured
Set percentage of disk space used for client computer cache	Not configured
Set age for segments in the data cache	Not configured
Configure Client BranchCache Version Support	Not configured

- A. Mastered  
 B. Not Mastered

**Answer:** A

**Explanation:**

- > Turn on BranchCache  
 --> Enable Automatic Hosted Cache Discovery by Service Connection ...

**NEW QUESTION 80**

- (Topic 3)  
 You have an Azure virtual machine named Served that runs a network management application. Server1 has the following network configurations:
- Network interface: Nic1
  - IP address. 10.1.1.1/24
  - Connected to: VnetVSubnet1
- You need to connect Server1 to an additional subnet named Vnet1/Subnet2. What should you do?

- A. Modify the IP configurations of Nic1.  
 B. Add a network interface to Server1.  
 C. Add an IP configuration to Nic1.  
 D. Create a private endpoint on Subnet2

**Answer:** D

**NEW QUESTION 82**

- (Topic 3)  
 Your network contains an Active Directory Domain Services (AD DS) domain. The domain contains a user named User1 and the servers shown in the following table.

Name	Server role	DHCP scope
Server1	DHCP Server	Scope1, Scope2
Server2	DHCP Server	Scope3, Scope4

You need to ensure that User1 can manage only Scope1 and Scope3. What should you do?

- A. Add User1 to the DHCP Administrators group on Server1 and Server2.  
 B. Implement IP Address Management (IPAM).  
 C. Add User1 to the DHCP Administrators domain local group.  
 D. Implement Windows Admin Center and add connections to Server1 and Server2.

**Answer:** B

**NEW QUESTION 87**

- HOTSPOT - (Topic 3)  
 Your on-premises network contains a single-domain Active Directory Domain Services (AD DS) forest. You have an Azure AD tenant named contoso.com. The AD DS forest syncs with the Azure AD tenant by using Azure AD Connect.  
 You need to ensure that users in the forest that have a custom attribute of NoSync are excluded from synchronization.  
 How should you configure the Azure AD Connect cloudFiltered attribute, and which tool should you use? To answer, select the appropriate options in the answer area.  
 NOTE: Each correct selection is worth one point.



Answer Area

Attribute:

Tool:

Answer:

Answer Area

Attribute:

Tool:

- A. Mastered
- B. Not Mastered

Answer: A

### NEW QUESTION 92

- (Topic 3)

You have an on-premises network that is connected to an Azure virtual network by using a Site-to-Site VPN. Each network contains a subnet that has the same IP address space. The on-premises subnet contains a virtual machine.

You plan to migrate the virtual machine to the Azure subnet.

You need to migrate the on premises virtual machine to Azure without modifying the IP address. The solution must minim administrative effort.

What should you implement before you perform the migration?

- A. Azure Extended Network
- B. Azure Virtual Network NAT
- C. Azure Application Gateway
- D. Azure virtual network peering

Answer: A

#### Explanation:

Reference:

<https://docs.microsoft.com/en-us/windows-server/manage/windows-admin-center/azure/azure-extended-network>

### NEW QUESTION 93

- (Topic 3)

Your network contains an Active Directory Domain Services (AD DS) domain.

You have a Group Policy Object (GPO) named GPO1 that contains Group Policy preferences.

You plan to link GPO1 to the domain.

You need to ensure that the preference in GPO1 apply only to domain member servers and NOT to domain controllers or client computers. All the other Group Policy settings in GPO1 must apply to all the computers. The solution must minimize administrative effort.

Which type of item level targeting should you use?

- A. Domain
- B. Operating System
- C. Security Group
- D. Environment Variable

Answer: B

#### Explanation:

Reference:

[https://docs.microsoft.com/en-us/previous-versions/windows/it-pro/windows-server-2012-r2-and-2012/dn789189\(v=ws.11\)#operating-system-targeting](https://docs.microsoft.com/en-us/previous-versions/windows/it-pro/windows-server-2012-r2-and-2012/dn789189(v=ws.11)#operating-system-targeting)

### NEW QUESTION 97

DRAG DROP - (Topic 3)

You deploy a single-domain Active Directory Domain Services (AD DS) forest named contoso.com.

You deploy a server to the domain and configure the server to run a service.

You need to ensure that the service can use a group managed service account (gMSA) to authenticate.

Which three PowerShell cmdlets should you run in sequence? To answer, move the appropriate cmdlets from the list of cmdlets to the answer area and arrange them in the correct order.

Cmdlets	Answer Area
Add-ADComputerServiceAccount	
Set-KdsConfiguration	
Add-ADGroupMember	
Add-KdsRootKey	
New-ADServiceAccount	
Install-ADServiceAccount	

- A. Mastered  
 B. Not Mastered

Answer: A

Explanation:

Cmdlets	Answer Area
Add-ADComputerServiceAccount	Add-KdsRootKey
Set-KdsConfiguration	New-ADServiceAccount
Add-ADGroupMember	Install-ADServiceAccount
Add-KdsRootKey	
New-ADServiceAccount	
Install-ADServiceAccount	

### NEW QUESTION 101

DRAG DROP - (Topic 3)

You have a server named Server1.

You plan to use Storage Spaces to expand the storage available to Server1. You attach eight physical disks to Server1. Four disks are HDDs and four are SSDs. You need to create a volume on Server1 that will use the storage on all the new disks. The solution must provide the fastest read performance for frequently used files.

Which three actions should you perform in sequence? To answer, move the appropriate actions from the list of actions to the answer area and arrange them in the correct order.

Actions	Answer Area
Create a virtual disk.	
Convert each new disk into a dynamic disk.	
Create a storage pool.	
Create a spanned volume.	
Convert each new disk into a GPT disk.	
Create a simple volume	

- A. Mastered  
 B. Not Mastered

Answer: A

Explanation:

Actions	Answer Area
Create a virtual disk.	Create a storage pool.
Convert each new disk into a dynamic disk.	Create a virtual disk.
Create a storage pool.	Create a simple volume
Create a spanned volume.	
Convert each new disk into a GPT disk.	
Create a simple volume	

### NEW QUESTION 106

HOTSPOT - (Topic 3)

You need to sync files from an on premises server named Server1 to Azure by using Azure File Sync.

You have a cloud tiering policy that is configured for 30 percent free space and 70 days. Volume E on Server1 is 500 GB.

A year ago, you configured E:\Data on Server1 to sync by using Azure File Sync. The files that are visible in E:\Data are shown in the following table.

Name	Size	Last accessed
File1	200 GB	2 days ago
File2	100 GB	10 days ago
File3	200 GB	60 days ago
File4	50 GB	100 days ago

Volume E does NOT contain any other files.

Where are File1 and File3 located? To answer, select the appropriate options in the answer area.

NOTE: Each correct selection is worth one point.

File1:

Server1 only
The Azure file share only
Server1 and the Azure file share

File3:

Server1 only
The Azure file share only
Server1 and the Azure file share

- A. Mastered
- B. Not Mastered

Answer: A

Explanation:

File1:

Server1 only
The Azure file share only
Server1 and the Azure file share

File3:

Server1 only
The Azure file share only
Server1 and the Azure file share

### NEW QUESTION 109

- (Topic 3)

Your network contains a multi-site Active Directory Domain Services (AD DS) forest. Each Active Directory site is connected by using manually configured site links and automatically generated connections.

You need to minimize the convergence time for changes to Active Directory. What should you do?

- A. For each site link, modify the options attribute.
- B. For each site link, modify the site link costs.
- C. For each site link, modify the replication schedule.
- D. Create a site link bridge that contains all the site links.

Answer: C

Explanation:

Reference:

<https://docs.microsoft.com/en-us/windows-server/identity/ad-ds/plan/determining-the-interval>



#### NEW QUESTION 110

- (Topic 3)

Your network contains a Active Directory Domain Service (AD DS) forest named contoso.com. The forest root domain contains a server named server1. contoso.com.

A two-way forest trust exists between the contoso.com forest and an AD DS forest named fabrikam.com. The fabrikam.com forest contains 10 child domains.

You need to ensure that only the members of a group named fabrikam\Group1 can authenticate to server1.contoso.com.

What should you do first?

- A. Change the trust to a one-way external trust.
- B. Add fabrikam\Group1 to the local Users group on server1.contoso.com.
- C. Enable SID filtering for the trust.
- D. Enable Selective authentication for the trust.

**Answer: B**

#### NEW QUESTION 113

HOTSPOT - (Topic 3)

You have a file server named Server1 that runs Windows Server and contains the volumes shown in the following table.

Name	File system
C	NTFS
D	NTFS
E	REFS

On which volumes can you use BitLocker Drive Encryption (BitLocker) and disk quotas? To answer select the appropriate options in the answer area. NOTE Each correct selection is worth one point.

Answer Area

BitLocker:

☐ C only

☐ D only

☐ C and D only

☐ D and E only

☐ C, D, and E

Disk quotas:

☐ C only

☐ D only

☐ C and D only

☐ D and E only

☐ C, D, and E

- A. Mastered
- B. Not Mastered

**Answer: A**

**Explanation:**

Answer Area

BitLocker:

☐ C only

☐ D only

☐ C and D only

☒ D and E only

☐ C, D, and E

Disk quotas:

☐ C only

☐ D only

☒ C and D only

☐ D and E only

☐ C, D, and E

#### NEW QUESTION 115

- (Topic 3)

You have an on-premises Active Directory Domain Services (AD DS) domain that syncs with an Azure Active Directory (Azure AD) tenant

You have several Windows 10 devices that are Azure AD hybrid-joined.

You need to ensure that when users sign in to the devices, they can use Windows Hello for Business.

Which optional feature should you select in Azure AD Connect?

- A. Device writeback
- B. Group writeback
- C. Password writeback
- D. Directory extension attribute sync
- E. Azure AD app and attribute filtering

**Answer: C**



**Explanation:**

Reference:

https://docs.microsoft.com/en-us/windows/security/identity-protection/hello-for-business/hello-hybrid-cert-trust-prereqs

**NEW QUESTION 116**

DRAG DROP - (Topic 3)

You have two on-premises servers named Server1 and Servet2 that run Windows Server.

You have an Azure Storage account named storage1 that contains a file share named share1. Server1 syncs with share1 by using Azure File Sync

You need to configure Server2 to sync with share1.

Which three actions should you perform in sequence? To answer, move the appropriate actions from the list of actions to the answer area and arrange them in the correct order.

**Actions**

- Register Server2 with the Storage Sync Service.
- Add a Storage Sync Service to the Azure subscription.
- On Server2, install the Azure File Sync agent.
- Add a cloud endpoint to the sync group.
- Add a server endpoint to the sync group.

**Answer Area**

A. Mastered

B. Not Mastered

**Answer: A**

**Explanation:**

**Actions**

- Register Server2 with the Storage Sync Service.
- Add a Storage Sync Service to the Azure subscription.
- On Server2, install the Azure File Sync agent.
- Add a cloud endpoint to the sync group.
- Add a server endpoint to the sync group.

**Answer Area**

On Server2, install the Azure File Sync agent.

Register Server2 with the Storage Sync Service.

Add a server endpoint to the sync group.

**NEW QUESTION 117**

HOTSPOT - (Topic 3)

Your network contains a two-domain on-premises Active Directory Domain Services (AD DS) forest named Contoso.com. The forest contains the domain controllers shown in the following table.

Name	Description	Domain	Active Directory site
DC1	Forest-wide and domain-wide FSMO role holder	contoso.com	Hub
DC2	Domain-wide FSMO role holder	child.contoso.com	Site1
RODC3	Read-only domain controller (RODC)	contoso.com	Site2

You create an Active Directory site named Site3. Site1, Site2 and Site3 each has a dedicated site link to the Hub site.

In Site3, you install a new server named Server1.

You need to promote Server1 to an ROOC in child.contoso.com by using the install from Media (IFM) option. The solution must minimize network traffic.

What should you do? To answer select the appropriate options in the answer area. NOTE: Each correct selection is worth one point.

**Answer Area**

Server to use to create the IFM source:

DC1

DC2

Server1

RODC3

Tool to use to create the IFM source:

Azure Backup

Dcdiag.exe

Ntdsutil.exe

Repadmin.exe

Windows Server Backup

A. Mastered

B. Not Mastered

**Answer: A**

**Explanation:**

Answer Area

Server to use to create the IFM source:

- DC1
- DC2
- Server1
- RODC3

Tool to use to create the IFM source:

- Azure Backup
- Dcdiag.exe
- Ntdsutil.exe
- Repadmin.exe
- Windows Server Backup

NEW QUESTION 118

- (Topic 3)

You have an Azure Active Directory Domain Services (Azure AD DS) domain named contoso.com.

You need to provide an administrator with the ability to manage Group Policy Objects (GPOs). The solution must use the principle of least privilege.

To which group should you add the administrator?

- A. AAD DC Administrators
- B. Domain Admins
- C. Schema Admins
- D. Enterprise Admins
- E. Group Policy Creator Owners

Answer: B

Explanation:

Only the Domain Admins group and the Enterprise Admins group can fully manage GPOs. Members of the Group Policy Creator Owners group can create new GPOs but they can't link the GPOs to sites, the domain or OUs and they cannot manage existing GPOs.

NEW QUESTION 119

- (Topic 3)

Your network contains an Active Directory Domain Services (AD DS) domain. The domain contains the domain controllers shown in the following table.

Name	Description
DC1	PDC emulator, RID master, and global catalog server
DC2	Infrastructure master and domain naming master
DC3	Schema master
RODC1	Read-only domain controller (RODC)

You need to ensure that if an attacker compromises the computer account of RODC1, the attacker cannot view the Employee-Number AD DS attribute. Which partition should you modify?

- A. configuration
- B. global catalog
- C. domain
- D. schema

Answer: D

NEW QUESTION 120

- (Topic 3)

Your network contains an Active Directory Domain Services (AD DS) domain. The domain contains the offices shown in the following table.

Location	Number of VPN servers	Number of remote users
Boston	2	30
Dallas	2	50
Seattle	4	100

You need to deploy a Network Policy Server (NPS) named NPS1 to enforce network access policies for all remote connections.

What is the minimum number of RADIUS clients that you should add to NPS1?

- A. 1
- B. 3
- C. 8
- D. 180
- E. 188

Answer: C

NEW QUESTION 123

- (Topic 3)

Your network contains an on-premises Active Directory Domain Services (AD DS) domain named contoso.com The domain contains three servers that run

Windows Server and have the Hyper-V server role installed. Each server has a Switch Embedded Teaming (SET) team. You need to verify that Remote Direct Memory Access (RDMA) and all the required Windows Server settings are configured properly on each server. What should you use?

- A. Server Manager
- B. the validate-DCB cmdlet
- C. the Get-NetAdaptor cmdlet
- D. Failover Cluster Manager

**Answer:** B

**Explanation:**

Reference: <https://github.com/Microsoft/Validate-DCB>

#### NEW QUESTION 125

HOTSPOT - (Topic 3)

You have on-premises servers that run Windows Server as shown in the following table.

Name	Local content
Server1	D:\Folder1\File1.docx
Server2	D:\Data1\File3.docx

You have an Azure file share named share1 that stores two files named File2.docx and File3.docx.

You create an Azure File Sync sync group that includes the following endpoints:

? share

? D:\Folder1 on Server1

? D:\Data1 on Server2

For each of the following statements, select Yes if the statement is true. Otherwise, select No.

NOTE: Each correct selection is worth one point.

Statements	Yes	No
You can create a file named File2.docx in D:\Folder1 on Server1.	<input type="checkbox"/>	<input type="checkbox"/>
You can create a file named File1.docx in D:\Data1 on Server2.	<input type="checkbox"/>	<input type="checkbox"/>
File3.docx will sync to Server1.	<input type="checkbox"/>	<input type="checkbox"/>

- A. Mastered
- B. Not Mastered

**Answer:** A

**Explanation:**

Statements	Yes	No
You can create a file named File2.docx in D:\Folder1 on Server1.	<input checked="" type="checkbox"/>	<input type="checkbox"/>
You can create a file named File1.docx in D:\Data1 on Server2.	<input checked="" type="checkbox"/>	<input type="checkbox"/>
File3.docx will sync to Server1.	<input type="checkbox"/>	<input checked="" type="checkbox"/>

#### NEW QUESTION 127

- (Topic 3)

You have a server named Server1 that runs Windows Server. Server1 has the storage pools shown in the following table.

Name	Number of 7,200-RPM HDDs	Number of 10,000-RPM HDDs	Number of SSDs
Pool1	4	4	None
Pool2	None	2	2
Pool3	8	None	4

You plan to create a virtual disk named VDisk1 that will use storage tiers. Which pools can you use to create VDisk1?



- A. Pool2 and Pool3 only
- B. Pool 2only
- C. Pool only
- D. Pool, Pool2, and Pool3
- E. Pool1 and Pool2 only
- F. Pool1 and Pool3 only
- G. Pool3 only

**Answer:** A

**Explanation:**

Storage tiering requires both standard HDDs and SSDs. We cannot use Pool1 because it does not have any SSDs.

**NEW QUESTION 132**

HOTSPOT - (Topic 3)

You have a Windows Server 2022 container host named Host1 and a container registry that contains the container images shown in the following table.

Name	Container base image OS version
Image1	Windows Server 2022
Image2	Windows Server 2019

You need to run the containers on Host1

Which isolation mode can you use for each image? To answer, select the appropriate options in the answer area.

NOTE: Each correct selection is worth one point.

**Answer Area**

Image1:

Image2:

**Answer:**

**Answer Area**

Image1:

Image2:

- A. Mastered
- B. Not Mastered

**Answer:** A

**NEW QUESTION 135**

HOTSPOT - (Topic 3)

Your network contains an Azure AD Domain Services domain named contoso.com.

You need to configure a password policy for the local user accounts on the Azure virtual machines joined to contoso.com.

What should you do? To answer, select the appropriate options in the answer area. NOTE: Each correct selection is worth one point.

**Answer Area**

Sign in by using a user account that is a member of the:

Use a Group Policy Object (GPO) linked to the:

**Answer:**



Answer Area

Sign in by using a user account that is a member of the:

AAD DC Administrators group

AAD DC Administrators group

Administrators group

Domain Admins group

Use a Group Policy Object (GPO) linked to the:

AADDC Users organizational unit (OU)

AADDC Computers organizational unit (OU)

AADDC Users organizational unit (OU)

Computers container

- A. Mastered  
 B. Not Mastered

Answer: A

NEW QUESTION 137

- (Topic 3)

Your network contains an Active Directory Domain Services (AD DS) domain named contoso.com.

You need to identify which server is the PDC emulator for the domain. Solution: From a command prompt, you run netdom.exe query fsmo. Does this meet the goal?

- A. Yes  
 B. No

Answer: A

Explanation:

Reference:

<https://activedirectorypro.com/how-to-check-fsmo-roles/>

NEW QUESTION 141

- (Topic 3)

Your company has a main office and a branch office. The two offices are connected by using a WAN link. Each office contains a firewall that filters WAN traffic.

The network in the branch office contains 10 servers that run Windows Server. All servers are administered from the main office only.

You plan to manage the servers in the branch office by using a Windows Admin Center gateway.

On a server in the branch office, you install the Windows Admin Center gateway by using the defaults settings.

You need to configure the firewall in the branch office to allow the required inbound connection to the Windows Admin Center gateway.

Which inbound TCP port should you allow?

- A. 443  
 B. 3389  
 C. 5985  
 D. 6516

Answer: A

NEW QUESTION 144

- (Topic 3)

Note: This question is part of a series of questions that present the same scenario. Each question in the series contains a unique solution that might meet the stated goals. Some question sets might have more than one correct solution, while others might not have a correct solution.

After you answer a question in this section, you will NOT be able to return to it. As a result, these questions will not appear in the review screen.

You are planning the deployment of DNS to a new network.

You have three internal DNS servers as shown in the following table.

Name	Location	IP address	Local DNS zone
Server1	Montreal	10.0.1.10	contoso.local
Server2	Toronto	10.0.2.10	east.contoso.local
Server3	Seattle	10.0.3.10	west.contoso.local

The contoso.local zone contains zone delegations for east.conloso.local and west.contoso.local. All the DNS servers use root hints.

You need to ensure that all the DNS servers can resolve the names of all the internal namespaces and internet hosts.

Solution: On Server2 and Server3, you configure a conditional forwarder for contoso.local. Does this meet the goal?

- A. Yes  
 B. No

Answer: B

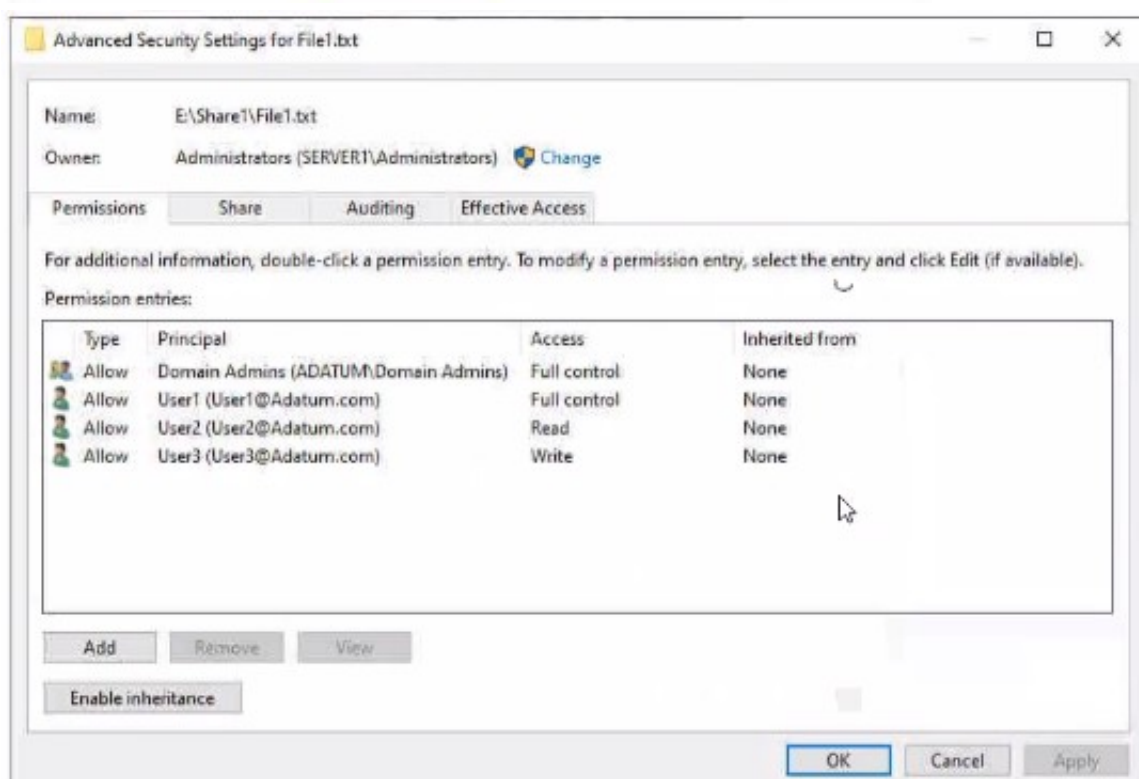
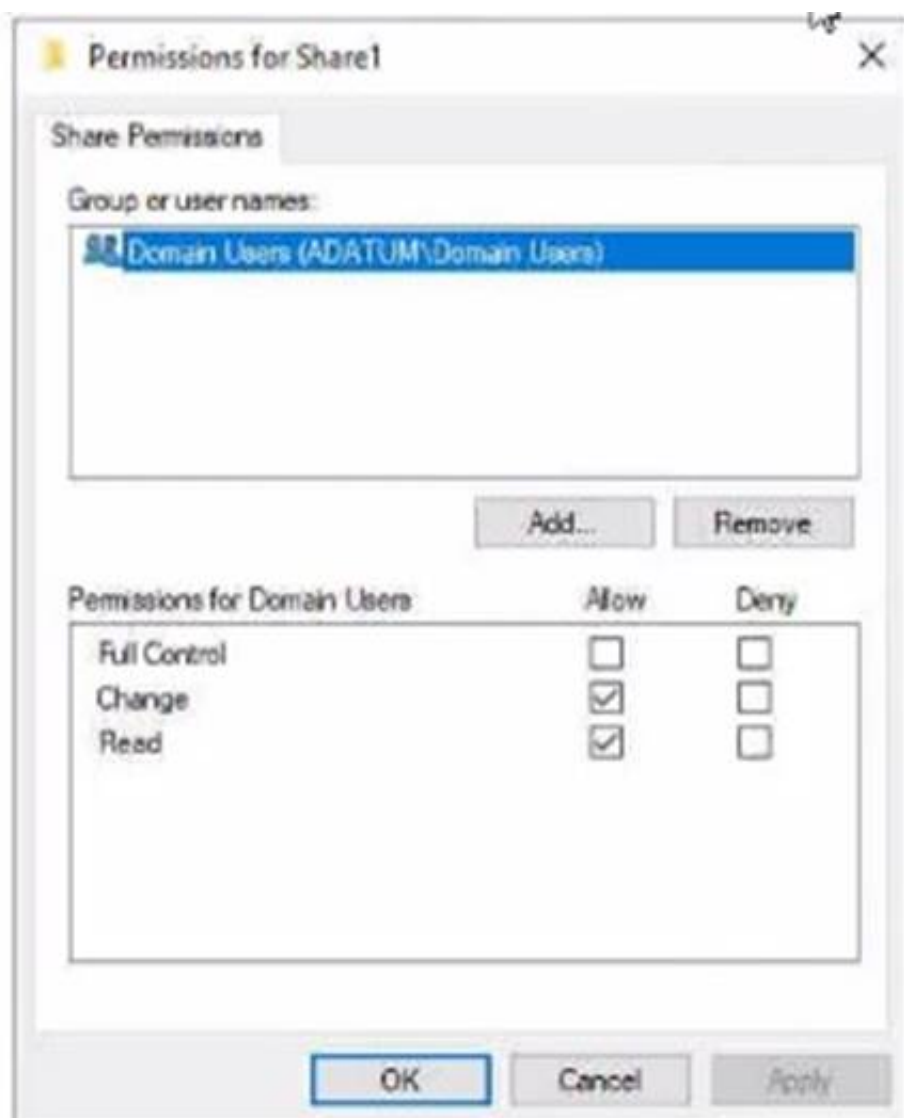
Explanation:

[https://docs.microsoft.com/en-us/previous-versions/windows/it-pro/windows-server-2008-r2-and-2008/cc794735\(v=ws.10\)](https://docs.microsoft.com/en-us/previous-versions/windows/it-pro/windows-server-2008-r2-and-2008/cc794735(v=ws.10))

NEW QUESTION 149

HOTSPOT - (Topic 3)

Your network contains an Active Directory Domain Services (AD DS) domain named adatum.com.



The domain contains a 'He server named Server1 and three users named User1. User2 and User), Server1 contains a shared folder named Share1 tha1 has the following configurations:

```
ShareState      : Online
AvailabilityType : NonClustered
FolderEnumerationMode : AccessBased
CachingMode    : Manual
LeasingMode    : Full
SubInstance    : Default
CompressData   : False
ContinuouslyAvailable : False
EncryptData    : False
Name           : Share1
Path           : E:\Share1
ShadowCopy     : False
```

The share permissions for Share1 are configured as shown in the Share Permissions exhibit. (Click the Share Permissions tab.)

Share! contains a file named File1.txt. The advanced security settings for File1.txt are configured as shown in the File Permissions exhibit. (Click the File Permissions tab.)

For each of the following statements, select Yes if the statement is true. Otherwise, select No.

NOTE: f ach correct selection is worth one point.

Statements	Yes	No
When User1 connects to \\Server1.adatum.com\Share1\, the user can take ownership of File1.txt.	<input type="radio"/>	<input type="radio"/>
When User2 connects to \\Server1.adatum.com\Share1\, File1.txt is visible.	<input type="radio"/>	<input type="radio"/>
When User3 connects to \\Server1.adatum.com\Share1\, File1.txt is visible.	<input type="radio"/>	<input type="radio"/>

- A. Mastered
- B. Not Mastered

Answer: A

Explanation:

Answer Area

Statements

When User1 connects to \\Server1.adatum.com\Share1\, the user can take ownership of File1.txt.

When User2 connects to \\Server1.adatum.com\Share1\, File1.txt is visible.

When User3 connects to \\Server1.adatum.com\Share1\, File1.txt is visible.

Yes

No

☐

☒

☒

☐

☐

☒

NEW QUESTION 152

- (Topic 3)

You have an on-premises Active Directory Domain Services (AD DS) domain that syncs with an Azure Active Directory (Azure AD) tenant. You plan deploy 100 new Azure virtual machines that will run Windows Server. You need to ensure that each new virtual machine is joined to the AD DS domain. What should you use?

- A. Azure AD Connect
- B. a Group Policy Object (GPO)
- C. an Azure Resource Manager (ARM) template
- D. an Azure management group

Answer: C

Explanation:

Reference:  
<https://www.ludovicmedard.com/create-an-arm-template-of-a-virtual-machine-automatically-joined-to-a-domain/>

NEW QUESTION 155

DRAG DROP - (Topic 3)

You have a server named Server 1 that runs Windows Server and has the Hyper-V server role installed. Server1 hosts a virtual machine named VM1. Server1 has an NV Me storage device that is assigned to VM1 by using Discrete Device Assignment. You need to make the device available to the host. Which four actions should you perform in sequence? To answer, move the appropriate actions from the list of actions to the answer area and arrange them in the correct order.

Actions

From VM1, disable the device by using Device Manager.

From Server1, stop VM1.

From Server1, run the Remove-VMAssignableDevice cmdlet.

From Server1, run the Mount-VMHostAssignableDevice cmdlet.

From Server1, enable the device by using Device Manager.

Answer Area

>

<

^

v

- A. Mastered
- B. Not Mastered

Answer: A

Explanation:

Actions

From VM1, disable the device by using Device Manager.

From Server1, stop VM1.

From Server1, run the Remove-VMAssignableDevice cmdlet.

From Server1, run the Mount-VMHostAssignableDevice cmdlet.

From Server1, enable the device by using Device Manager.

Answer Area

From Server1, stop VM1.

From Server1, run the Remove-VMAssignableDevice cmdlet.

From Server1, run the Mount-VMHostAssignableDevice cmdlet.

From Server1, enable the device by using Device Manager.

>

<

^

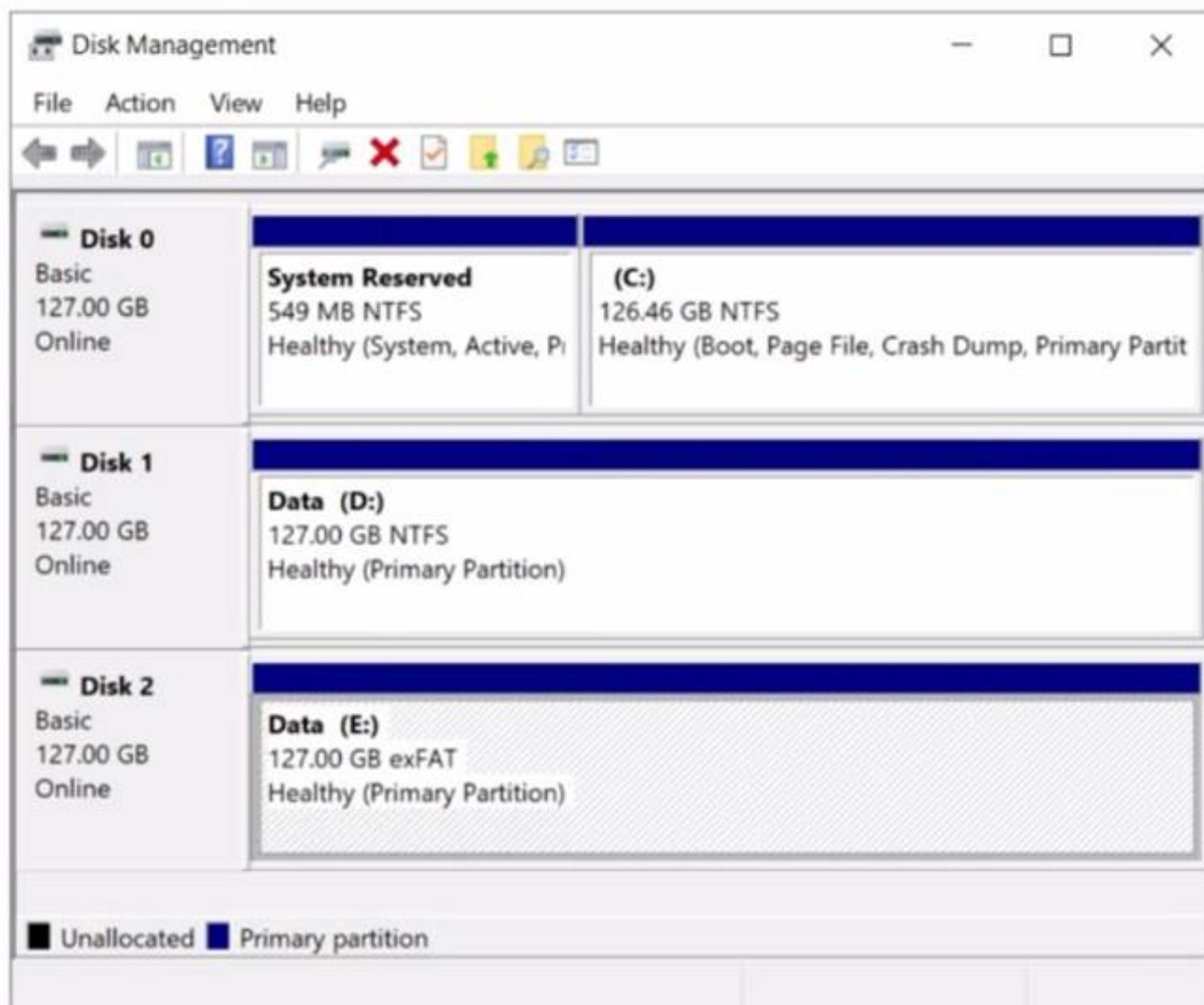
v

NEW QUESTION 160

- (Topic 3)

You have a server named Server1 that runs Windows Server. The disks on Server1 are configured as shown in the following exhibit.





You need to convert volume E to ReFS. The solution must meet the following requirements:

- Preserve the existing data on volume E.
- Minimize administrative effort. What should you do first?

- A. Take Disk 2 offline.
- B. Back up the data on volume E.
- C. Convert Disk 2 to a dynamic disk.
- D. Runconvert.exe.

**Answer: B**

#### NEW QUESTION 165

- (Topic 3)

You have an on-premises Active Directory Domain Services (AD DS) domain that syncs with an Azure Active Directory (Azure AD) tenant. The on-premises network is connected to Azure by using a Site-to-Site VPN. You have the DNS zones shown in the following table.

Name	Location	Description
contoso.com	A domain controller named DC1 on the on-premises network	Provides name resolution on-premises
fabrikam.com	An Azure private DNS zone	Provides name resolution for all Azure virtual networks

You need to ensure that names from fabrikam.com can be resolved from the on-premises network. Which two actions should you perform? Each correct answer presents part of the solution. NOTE: Each correct selection is worth one point.

- A. Create a conditional forwarder for fabrikam.com on DC1.
- B. Create a stub zone for fabrikam.com on DC1.
- C. Create a secondary zone for fabrikam.com on DC1.
- D. Deploy an Azure virtual machine that runs Windows Server.
- E. Modify the DNS Servers settings for the virtual network.
- F. Deploy an Azure virtual machine that runs Windows Server.
- G. Configure the virtual machine as a DNS forwarder.

**Answer: AE**

#### Explanation:

Reference:

<https://docs.microsoft.com/en-us/azure/private-link/private-endpoint-dns#on-premises-workloads-using-a-dns-forwarder>

#### NEW QUESTION 167

- (Topic 3)

You have an on-premises Active Directory Domain Services (AD DS) domain that syncs with an Azure Active Directory (Azure AD) tenant. The domain contains two servers named Server1 and Server2.

A user named Admin1 is a member of the local Administrators group on Server1 and Server2.

You plan to manage Server1 and Server2 by using Azure Arc. Azure Arc objects will be added to a resource group named RG1.

You need to ensure that Admin1 can configure Server1 and Server2 to be managed by using Azure Arc.

What should you do first?

- A. Mastered

B. Not Mastered

**Answer:** A

**Explanation:**

Reference:

<https://docs.microsoft.com/en-us/azure/azure-arc/servers/onboard-service-principal>

#### NEW QUESTION 169

- (Topic 3)

You have a server named Server1 that hosts Windows containers. You plan to deploy an application that will have multiple containers. Each container will be You need to create a Docker network that supports the deployment of the application. Which type of network should you create?

- A. transparent
- B. I2bridge
- C. NAT
- D. I2tunnel

**Answer:** A

**Explanation:**

Reference:

<https://docs.microsoft.com/en-us/virtualization/windowscontainers/container-networking/network-drivers-topologies>

#### NEW QUESTION 173

- (Topic 3)

Your network contains an Active Directory Domain Services (AD DS) forest. The forest contains three Active Directory sites named Site1, Site2, and Site3. Each site contains two domain controllers. The sites are connected by using DEFAULTIPSITELINK.

You open a new branch office that contains only client computers.

You need to ensure that the client computers in the new office are primarily authenticated by the domain controllers in Site1.

Solution: You configure the Try Next Closest Site Group Policy Object (GPO) setting in a GPO that is linked to Site1.

Does this meet the goal?

- A. Yes
- B. No

**Answer:** B

#### NEW QUESTION 178

HOTSPOT - (Topic 3)

You have an Azure subscription that contains the storage accounts shown in the following table.

Name	Location	Kind	Container	File share
storage1	East US	StorageV2	cont1	share1
storage2	East US	BlockBlobStorage	cont2	<i>Not applicable</i>
storage3	East US	FileStorage	<i>Not applicable</i>	share3
storage4	Central US	StorageV2	cont4	share4

In the East US Azure region, you create a storage sync service named Synd. You need to create a sync group in Synd.

Which storage accounts can you use, and what can you specify as the cloud endpoints? To

answer, select the appropriate options in the answer area. NOTE: Each correct selection is worth one point.

**Answer Area**

Storage accounts: storage1 and storage3 only

- storage1 only
- storage1 and storage3 only**
- storage1 and storage4 only
- storage1, storage2, and storage3 only
- storage1, storage2, storage3, and storage4

Cloud endpoints: share1 and share3 only

- cont1 and cont2 only
- share1 and share3 only**
- cont1, cont2, and cont4 only
- share1, share3, and share4 only
- cont1, cont2, share1, and share3 only
- cont1, cont2, cont4, share1, share3, and share4

- A. Mastered
- B. Not Mastered

**Answer:** A

**Explanation:**

Answer Area

Storage accounts:

Cloud endpoints:

NEW QUESTION 180

- (Topic 3)

You have a server named Server1 that runs Windows Server and contains two drives named C and D. Server1 hosts multiple file shares. You enable Data Deduplication on drive D and select the General purpose file server workload. You need to minimize the space consumed by files that were recently modified or deleted. What should you do?

- A. Run the set-dedupvolume cmdlet and configure the scrubbing job.
- B. Run the Set-DedupSchedule Cmdlet and configure a GarbageCollection job.
- C. Run the set-Dedupvoiume cmdlet and configure the InputOutputScale settings.
- D. Run the Set-DedupSchedule cmdlet and configure the optimization job.

Answer: B

NEW QUESTION 183

HOTSPOT - (Topic 3)

You have an on-premises server named Server1 that runs Windows Server and has internet connectivity.

You have an Azure subscription.

You need to monitor Server1 by using Azure Monitor.

Which resources should you create in the subscription, and what should you install on Server1? To answer, select the appropriate options in the answer area.

NOTE: Each correct selection is worth one point.

In the subscription, create:

<input type="checkbox"/>	An Azure Files storage account
<input type="checkbox"/>	A Log Analytics workspace
<input type="checkbox"/>	An Azure SQL database and a data collection rule
<input type="checkbox"/>	An Azure Blob Storage account and a data collection rule

On Server1, install:

<input type="checkbox"/>	The Azure Monitor agent
<input type="checkbox"/>	The Analytics gateway
<input type="checkbox"/>	The Device Health Attestation server role

- A. Mastered
- B. Not Mastered

Answer: A

Explanation:



NEW QUESTION 186

HOTSPOT - (Topic 3)

Your network contains two Active Directory Domain Services (AD DS) forests named contoso.com and fabrikam.com. A two-way forest trust exists between the forests. Each forest contains a single domain. The domains contain the servers shown in the following table.

Name	Domain	Description
Server1	contoso.com	Hosts a Windows Admin Center gateway
Server2	fabrikam.com	Hosts resources that will be managed remotely by using Windows Admin Center on Server1

You need to configure resources based constrained delegation so that the users in contoso.com can use Windows Admin Center on Server1 to connect to Server2. How should you complete the command? To answer, select the appropriate options in the answer area.

NOTE: Each correct selection is worth one point.

Answer Area

Set-ADComputer -Identity

(Get-ADComputer server1.contoso.com)

(Get-ADComputer server2.fabrikam.com)

(Get-ADGroup 'Contoso\Domain Users')

(Get-ADGroup 'Fabrikam\Domain Users')

-PrincipalsAllowedToDelegateToAccount

(Get-ADComputer server1.contoso.com)

(Get-ADComputer server2.fabrikam.com)

(Get-ADGroup 'Contoso\Domain Users')

(Get-ADGroup 'Fabrikam\Domain Users')

- A. Mastered
- B. Not Mastered

Answer: A

Explanation:

Answer Area

Set-ADComputer -Identity

(Get-ADComputer server1.contoso.com)

(Get-ADComputer server2.fabrikam.com)

(Get-ADGroup 'Contoso\Domain Users')

(Get-ADGroup 'Fabrikam\Domain Users')

-PrincipalsAllowedToDelegateToAccount

(Get-ADComputer server1.contoso.com)

(Get-ADComputer server2.fabrikam.com)

(Get-ADGroup 'Contoso\Domain Users')

(Get-ADGroup 'Fabrikam\Domain Users')

NEW QUESTION 187

HOTSPOT - (Topic 3)

Your on-premises network contains an Active Directory domain named contoso.com and 500 servers that run Windows Server. All the servers are Azure Arc-enabled and joined to contoso.com.

You need to implement PowerShell Desired State Configuration (DSC) on all the servers. The solution must minimize administrative effort.

Where should you store the DSC scripts, and what should you use to apply DSC to the servers? To answer, select the appropriate options in the answer area.

NOTE: Each correct selection is worth one point.

Answer Area

Store in:

An Azure Automation account

An Azure App Configuration store

An Azure Automation account

An Azure Policy definition

Use:

Guest configuration in Azure Policy

A Group Policy Object (GPO) in Active Directory Domain Services (AD DS)

Azure virtual machine extensions

Guest configuration in Azure Policy

- A. Mastered
- B. Not Mastered

Answer: A

Explanation:

Answer Area

Store in:

An Azure Automation account

An Azure App Configuration store

An Azure Automation account

An Azure Policy definition

Use:

Guest configuration in Azure Policy

A Group Policy Object (GPO) in Active Directory Domain Services (AD DS)

Azure virtual machine extensions

Guest configuration in Azure Policy

NEW QUESTION 191

DRAG DROP - (Topic 2)

Which three actions should you perform in sequence to meet the security requirements for Webapp1? To answer, move the appropriate actions from the list of actions to the answer area and arrange them in the correct order.

Actions

- Create a standalone managed service account (sMSA) in AD DS.
- Configure the IIS application pool to run as Network Service.
- Configure the IIS application pool to run as a specified user account.
- Create a group managed service account (gMSA) in Active Directory.
- Create a system-assigned managed identity in Azure AD.
- Create a user-assigned managed identity in Azure AD.
- Create the Key Distribution Services (KDS) root key in AD DS.

Answer Area



- A. Mastered
- B. Not Mastered

Answer: A

Explanation:

Actions

- Create a standalone managed service account (sMSA) in AD DS.
- Configure the IIS application pool to run as Network Service.
- Configure the IIS application pool to run as a specified user account.
- Create a group managed service account (gMSA) in Active Directory.
- Create a system-assigned managed identity in Azure AD.
- Create a user-assigned managed identity in Azure AD.
- Create the Key Distribution Services (KDS) root key in AD DS.

Answer Area

Configure the IIS application pool to run as Network Service.

Create a group managed service account (gMSA) in Active Directory.

Create the Key Distribution Services (KDS) root key in AD DS.

NEW QUESTION 192

- (Topic 2)

You need to configure the Group Policy settings to ensure that the Azure Virtual Desktop session hosts meet the security requirements. What should you configure?

- A. security filtering for the link of GP04
- B. security filtering for the link of GPO1
- C. loopback processing in GPO4
- D. the Enforced property for the link of GP01
- E. loopback processing in GPO1

F. the Enforced property for the link of GP04

Answer: C

NEW QUESTION 194

HOTSPOT - (Topic 2)

You need to configure network communication between the Seattle and New York offices. The solution must meet the networking requirements. What should you configure? To answer, select the appropriate options in the answer area. NOTE: Each correct selection is worth one point.

On a Virtual WAN hub:

An ExpressRoute gateway
A virtual network gateway
An ExpressRoute circuit connection

In the offices:

An ExpressRoute circuit connection
A Site to-Site VPN
An Azure application gateway
An on premises data gateway

- A. Mastered
- B. Not Mastered

Answer: A

Explanation:

On a Virtual WAN hub:

An ExpressRoute gateway
A virtual network gateway
An ExpressRoute circuit connection

In the offices:

An ExpressRoute circuit connection
A Site to-Site VPN
An Azure application gateway
An on premises data gateway

NEW QUESTION 198

DRAG DROP - (Topic 2)

You need to meet the security requirements for passwords.

Where should you configure the components for Azure AD Password Protection? To answer, drag the appropriate components to the correct locations. Each component may be used once, more than once, or not at all. You may need to drag the split bar between panes or scroll to view content.

NOTE Each correct selection is worth one point.

Locations

DC1 only

All the domain controllers

VM1 and VM2

The Azure AD tenant

Answer Area

The Azure AD Password Protection DC agent: Location

The Azure AD Password Protection proxy service: Location

A custom banned password list: Location

- A. Mastered
- B. Not Mastered

Answer: A

Explanation:



Locations	Answer Area
DC1 only	
All the domain controllers	
VM1 and VM2	
The Azure AD tenant	

The Azure AD Password Protection DC agent:	All the domain controllers
The Azure AD Password Protection proxy service:	VM1 and VM2
A custom banned password list:	The Azure AD tenant

### NEW QUESTION 200

- (Topic 2)

You are planning the implementation Azure Arc to support the planned changes. You need to configure the environment to support configuration management policies. What should you do?

- A. Hybrid Azure AD join all the servers.
- B. Create a hybrid runbook worker m Azure Automation.
- C. Deploy the Azure Connected Machine agent to all the servers.
- D. Deploy the Azure Monitor agent to all the servers.

**Answer: C**

#### Explanation:

Reference:

<https://docs.microsoft.com/en-us/azure/azure-arc/servers/plan-at-scale-deployment>

### NEW QUESTION 201

- (Topic 1)

You need to meet the technical requirements for VM2. What should you do?

- A. Implement shielded virtual machines.
- B. Enable the Guest services integration service.
- C. Implement Credential Guard.
- D. Enable enhanced session mode.

**Answer: D**

### NEW QUESTION 206

- (Topic 1)

You need to meet the technical requirements for Server1. Which users can currently perform the required tasks?

- A. Admin1 only
- B. Admin3 only
- C. Admin1 and Admin3 only
- D. Admin1 Admin2. and Admm3

**Answer: C**

### NEW QUESTION 207

HOTSPOT - (Topic 1)

You need to meet the technical requirements for Server4.

Which cmdlets should you run on Server1 and Server4? To answer, select the appropriate options in the answer area.

NOTE: Each correct selection is worth one point.

Server1:

Enable-PSRemoting
Enable-ServerManagerStandardUserRemoting
Set-Item
Start-Service

Server4:

Enable-PSRemoting
Enable-ServerManagerStandardUserRemoting
Set-Item
Start-Service

- A. Mastered
- B. Not Mastered

**Answer: A**

#### Explanation:

Server1:

Enable-PSRemoting
Enable-ServerManagerStandardUserRemoting
Set-Item
Start-Service

Server4:

Enable-PSRemoting
Enable-ServerManagerStandardUserRemoting
Set-Item
Start-Service

#### NEW QUESTION 212

HOTSPOT - (Topic 1)

Which groups can you add to Group3 and Group5? To answer, select the appropriate options in the answer area.

NOTE: Each correct selection is worth one point.

Group3:

Group6 only
Group1 and Group2 only
Group1 and Group4 only
Group1, Group2, Group4, and Group5 only
Group1, Group2, Group4, Groups, and Group6

Group5:

Group1 only
Group4 only
Group6 only
Group2 and Group4 only
Group4 and Group6 only

- A. Mastered
- B. Not Mastered

Answer: A

Explanation:

Group3:

Group6 only
Group1 and Group2 only
Group1 and Group4 only
Group1, Group2, Group4, and Group5 only
Group1, Group2, Group4, Groups, and Group6

Group5:

Group1 only
Group4 only
Group6 only
Group2 and Group4 only
Group4 and Group6 only

#### NEW QUESTION 216

- (Topic 1)

You need to meet the technical requirements for User1. The solution must use the principle of least privilege. What should you do?

- A. Add Users1 to the Server Operators group in contoso.com.
- B. Create a delegation on contoso.com.
- C. Add Users1 to the Account Operators group in contoso.com.
- D. Create a delegation on OU3.

**Answer:** D

#### Explanation:

Reference:

<https://docs.microsoft.com/en-us/windows-server/identity/ad-ds/plan/delegating-administration-of-account-ous-and-resource-ous>

#### NEW QUESTION 221

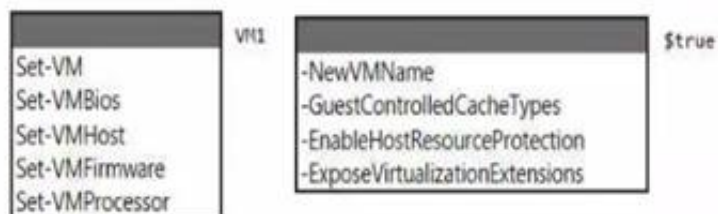
HOTSPOT - (Topic 1)

You need to meet the technical requirements for VM1.

Which cmdlet should you run first? To answer, select the appropriate options in the answer area.

NOTE: Each correct selection is worth one point.

Answer Area



- A. Mastered
- B. Not Mastered

**Answer:** A

#### Explanation:

Graphical user interface, text, application Description automatically generated

#### NEW QUESTION 224

- (Topic 1)

You need to meet the technical requirements for VM3 On which volumes can you enable Data Deduplication?

- A. D and E only
- B. C, D, E, and F
- C. D only
- D. C and D only
- E. D, E, and F only

**Answer:** A

#### Explanation:

Reference:

<https://docs.microsoft.com/en-us/windows-server/storage/data-deduplication/interop>

#### NEW QUESTION 228

.....



## THANKS FOR TRYING THE DEMO OF OUR PRODUCT

Visit Our Site to Purchase the Full Set of Actual AZ-800 Exam Questions With Answers.

We Also Provide Practice Exam Software That Simulates Real Exam Environment And Has Many Self-Assessment Features. Order the AZ-800 Product From:

<https://www.2passeasy.com/dumps/AZ-800/>

## Money Back Guarantee

### **AZ-800 Practice Exam Features:**

- \* AZ-800 Questions and Answers Updated Frequently
- \* AZ-800 Practice Questions Verified by Expert Senior Certified Staff
- \* AZ-800 Most Realistic Questions that Guarantee you a Pass on Your FirstTry
- \* AZ-800 Practice Test Questions in Multiple Choice Formats and Updatesfor 1 Year