



Fortinet

Exam Questions NSE5_FMG-7.2

Fortinet NSE 5 - FortiManager 7.2

About ExamBible

[Your Partner of IT Exam](#)

Found in 1998

ExamBible is a company specialized on providing high quality IT exam practice study materials, especially Cisco CCNA, CCDA, CCNP, CCIE, Checkpoint CCSE, CompTIA A+, Network+ certification practice exams and so on. We guarantee that the candidates will not only pass any IT exam at the first attempt but also get profound understanding about the certificates they have got. There are so many alike companies in this industry, however, ExamBible has its unique advantages that other companies could not achieve.

Our Advances

* 99.9% Uptime

All examinations will be up to date.

* 24/7 Quality Support

We will provide service round the clock.

* 100% Pass Rate

Our guarantee that you will pass the exam.

* Unique Gurantee

If you do not pass the exam at the first time, we will not only arrange FULL REFUND for you, but also provide you another exam of your claim, ABSOLUTELY FREE!

NEW QUESTION 1

- (Exam Topic 1)

An administrator has assigned a global policy package to a new ADOM called ADOM1. What will happen if the administrator tries to create a new policy package in ADOM1?

- A. When creating a new policy package, the administrator can select the option to assign the global policy package to the new policy package
- B. When a new policy package is created, the administrator needs to reapply the global policy package to ADOM1.
- C. When a new policy package is created, the administrator must assign the global policy package from the global ADOM.
- D. When the new policy package is created, FortiManager automatically assigns the global policy package to the new policy package.

Answer: D

Explanation:

Reference:

https://help.fortinet.com/fmgr/50hlp/56/5-6-2/FortiManager_Admin_Guide/1200_Policy%20and%20Objects/08

NEW QUESTION 2

- (Exam Topic 1)

An administrator would like to create an SD-WAN using central management in the Training ADOM.

To create an SD-WAN using central management, which two steps must be completed? (Choose two.)

- A. Specify a gateway address when you create a default SD-WAN static route
- B. Enable SD-WAN central management in the Training ADOM
- C. Configure and install the SD-WAN firewall policy and SD-WAN static route before installing the SD-WANtemplate settings
- D. Remove all the interface references such as routes or policies that will be a part of SD-WAN member interfaces

Answer: BD

Explanation:

Reference:

<https://docs.fortinet.com/document/fortigate/6.0.0/cookbook/676493/removing-existing-configuration-reference>

NEW QUESTION 3

- (Exam Topic 1)

Which configuration setting for FortiGate is part of a device-level database on FortiManager?

- A. VIP and IP Pools
- B. Firewall policies
- C. Security profiles
- D. Routing

Answer: D

Explanation:

The FortiManager stores the FortiGate configuration details in two distinct databases. The device-level database includes configuration details related to device-level settings, such as interfaces, DNS, routing, and more. The ADOM-level database includes configuration details related to firewall policies, objects, and security profiles.

NEW QUESTION 4

- (Exam Topic 1)

You are moving managed FortiGate devices from one ADOM to a new ADOM. Which statement correctly describes the expected result?

- A. Any pending device settings will be installed automatically
- B. Any unused objects from a previous ADOM are moved to the new ADOM automatically
- C. The shared policy package will not be moved to the new ADOM
- D. Policy packages will be imported into the new ADOM automaticallyD

Answer: C

Explanation:

Reference:

<https://community.fortinet.com/t5/FortiManager/Technical-Note-How-to-move-objects-to-new-ADOM-on-Forti>

NEW QUESTION 5

- (Exam Topic 1)

Which two statements about the scheduled backup of FortiManager are true? (Choose two.)

- A. It does not back up firmware images saved on FortiManager.
- B. It can be configured using the CLI and GUI.
- C. It backs up all devices and the FortiGuard database.
- D. It supports FTP, SCP, and SFTP.

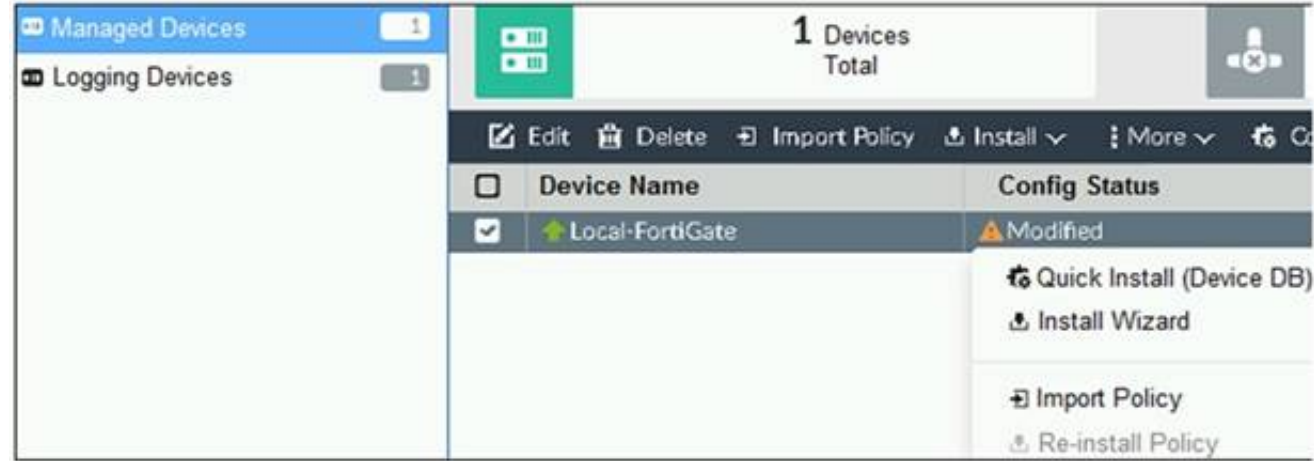
Answer: AD

Explanation:

Reference: https://docs.ansible.com/ansible/latest/collections/fortinet/fortimanager/fmgr_system_backup_allsettings_modul

NEW QUESTION 6

- (Exam Topic 1)
Refer to the exhibit.



You are using the Quick Install option to install configuration changes on the managed FortiGate. Which two statements correctly describe the result? (Choose two.)

- A. It will not create a new revision in the revision history
- B. It installs device-level changes to FortiGate without launching the Install Wizard
- C. It cannot be canceled once initiated and changes will be installed on the managed device
- D. It provides the option to preview configuration changes prior to installing them

Answer: BC

Explanation:

FortiManager_6.4_Study_Guide-Online – page 164
The Install Config option allows you to perform a quick installation of device-level settings without launching the Install Wizard. When you use this option, you cannot preview the changes prior to committing. Administrator should be certain of the changes before using this install option, because the install can't be cancelled after the process is initiated.

NEW QUESTION 7

- (Exam Topic 1)
View the following exhibit:

Create New CLI Script

Script Name

Config

Comments

Write a comment

0/255

Type

CLI Script

Run Script on

Remote FortiGate Directly(via CLI)

[View Sample Script]

Script Detail

```
config vpn ipsec phase1-interface
edit "H25_0"
set auto-discovery-sender enable
next
end
config system interface
edit "H25_0"
set vdom "root"
set ip 172.16.1.1 255.255.255.255
set remote-ip 172.16.1.254
next
end
config router bgp
set as 65100
set router-id 172.16.1.1
config neighbor-group
```

Advanced Device Filters

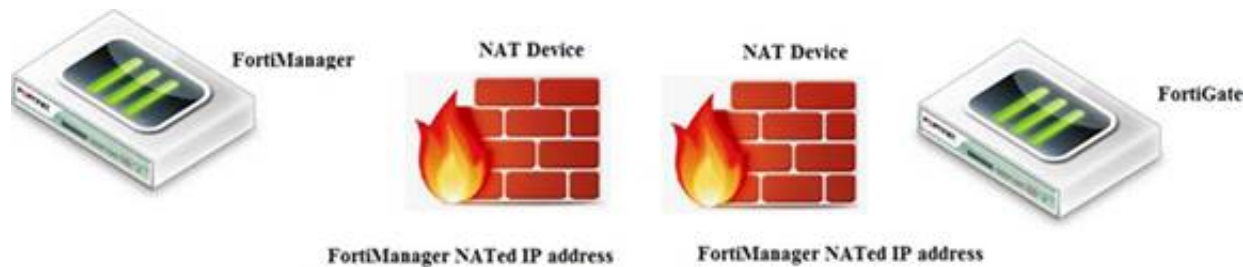
Which two statements are true if the script is executed using the Remote FortiGate Directly (via CLI) option? (Choose two.)

- A. You must install these changes using Install Wizard
- B. FortiGate will auto-update the FortiManager's device-level database.
- C. FortiManager will create a new revision history.
- D. FortiManager provides a preview of CLI commands before executing this script on a managedFortiGate.

Answer: BC

NEW QUESTION 8

- (Exam Topic 1)
View the following exhibit.



If both FortiManager and FortiGate are behind the NAT devices, what are the two expected results? (Choose two.)

- A. FortiGate is discovered by FortiManager through the FortiGate NATed IP address.
- B. FortiGate can announce itself to FortiManager only if the FortiManager IP address is configured on FortiGate under central management.
- C. During discovery, the FortiManager NATed IP address is not set by default on FortiGate.
- D. If the FCFM tunnel is torn down, FortiManager will try to re-establish the FGFM tunnel.

Answer: AC

Explanation:

Fortimanager can discover FortiGate through a NATed FortiGate IP address. If a FortiManager NATed IP address is configured on FortiGate, then FortiGate can announce itself to FortiManager. FortiManager will not attempt to re-establish the FGFM tunnel to the FortiGate NATed IP address, if the FGFM tunnel is interrupted. Just like it was in the NATed FortiManager scenario, the FortiManager NATed IP address in this scenario is not configured under FortiGate central management configuration.

NEW QUESTION 9

- (Exam Topic 1)

Refer to the exhibit.

```
Start to import config from device(Local-FortiGate) vdom(root) to
adom(My_ADOM), package(Local-FortiGate_root)

"firewall service category",SKIPPED,"(name=General, oid=697, DUPLICATE)"

"firewall address",SUCCESS,"(name=LOCAL_SUBNET, oid=684, new object)"

"firewall service custom",SUCCESS,"(name=ALL, oid=863, update previous
object)"

"firewall policy",SUCCESS,"(name=1, oid = 1090, new object)"
```

Which statement about the object named ALL is true?

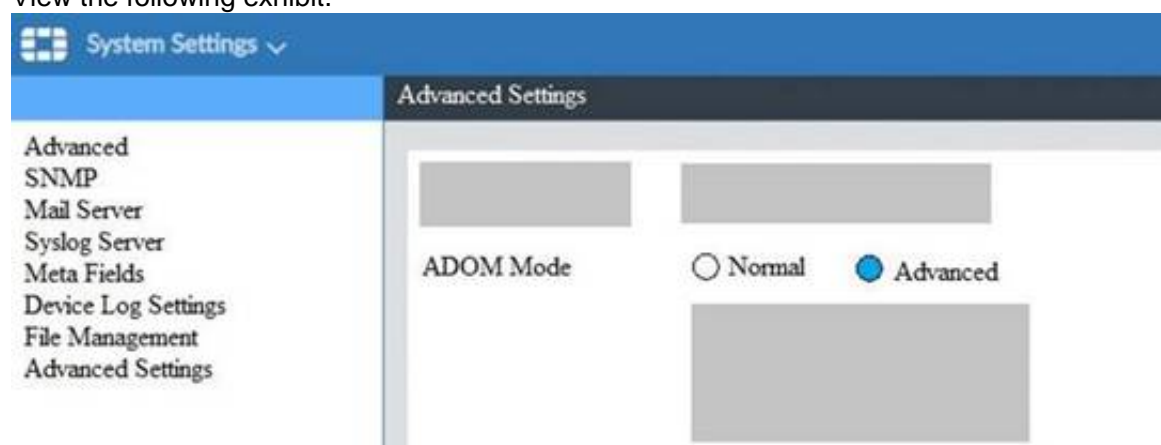
- A. FortiManager updated the object ALL using the FortiGate value in its database.
- B. FortiManager installed the object ALL with the updated value.
- C. FortiManager created the object ALL as a unique entity in its database, which can be only used by this managed FortiGate.
- D. FortiManager updated the object ALL using the FortiManager value in its database.

Answer: A

NEW QUESTION 10

- (Exam Topic 1)

View the following exhibit.



What is the purpose of setting ADOM Mode to Advanced?

- A. The setting allows automatic updates to the policy package configuration for a managed device
- B. The setting enables the ADOMs feature on FortiManager
- C. This setting allows you to assign different VDOMs from the same FortiGate to different ADOMs.
- D. The setting disables concurrent ADOM access and adds ADOM locking

Answer: C

Explanation:

Reference:

<https://docs.fortinet.com/document/fortianalyzer/7.0.0/administration-guide/66530/adom-device-modes>

NEW QUESTION 10

- (Exam Topic 1)

In the event that the primary FortiManager fails, which of the following actions must be performed to return the FortiManager HA to a working state?

- A. Secondary device with highest priority will automatically be promoted to the primary role, and manually reconfigure all other secondary devices to point to the new primary device
- B. Reboot one of the secondary devices to promote it automatically to the primary role, and reconfigure all other secondary devices to point to the new primary device.
- C. Manually promote one of the secondary devices to the primary role, and reconfigure all other secondary devices to point to the new primary device.
- D. FortiManager HA state transition is transparent to administrators and does not require any reconfiguration.

Answer: C

Explanation:

FortiManager_6.4_Study_Guide-Online – page 346

FortiManager HA doesn't support IP takeover where an HA state transition is transparent to administrators. If a failure of the primary occurs, the administrator must take corrective action to resolve the problem that may include invoking the state transition. If the primary device fails, the administrator must do the following in order to return the FortiManager HA to a working state:

- * 1. Manually reconfigure one of the secondary devices to become the primary device
- * 2. Reconfigure all other secondary devices to point to the new primary device

NEW QUESTION 15

- (Exam Topic 1)

An administrator, Trainer, who is assigned the Super_User profile, is trying to approve a workflow session that was submitted by another administrator, Student. However, Trainer is unable to approve the workflow session.

What can prevent an admin account that has Super_User rights over the device from approving a workflow session?

Session List

View Diff

<input type="checkbox"/>	ID	Name	User	Date Submitt...	Approved/To...	Comments
<input checked="" type="checkbox"/>	1	Firewall p..	Student	2017-06-01...	0/1	firewall policies

+ Add Comment

[Student] - 2017-06-01 13:31:35
firewall policies

[Student] - 2017-06-01 16:29:27

- A. Trainer is not a part of workflow approval group
- B. Trainer does not have full rights over this ADOM
- C. Trainer must close Student's workflow session before approving the request
- D. Student, who submitted the workflow session, must first self-approve the request

Answer: A

Explanation:

Reference:
https://help.fortinet.com/fmgr/50hlp/56/5-6-1/FMG-FAZ/0800_ADOMs/1800_Workflow/0600_Workflow%20s

NEW QUESTION 19

- (Exam Topic 1)

View the following exhibit.

Starting Log (Run the device)

```
Start installing
Local-FortiGate $ config user device
Local-FortiGate (device) $ edit "mydevice"
new entry 'mydevice' added
Local-FortiGate (mydevice) $ next
MAC address can not be 0
Node_check_object fail!for mac 00:00:00:00:00:00
Attribute 'mac' value '00:00:00:00:00:00' checkingfail -33
Command fail. Return code 1
Local-FortiGate (device) $ end
...
Local-FortiGate $ config firewall policy
Local-FortiGate (policy) $ edit 2
New entry '2' added
Local-FortiGate (2) $ set name "Device_policy"
Local-FortiGate (2) $ set uuid 64...
Local-FortiGate (2) $ set srcintf "port3"
Local-FortiGate (2) $ set dstintf "port1"
Local-FortiGate (2) $ set srcaddr "all"
Local-FortiGate (2) $ set dstaddr "all"
Local-FortiGate (2) $ set action accept
Local-FortiGate (2) $ set schedule "always"
Local-FortiGate (2) $ set service "ALL"
Local-FortiGate (2) $ set devices "mydevice"
Entry not found in datasource
Value parse error before 'mydevice'
Command fail. Return code -3
Local-FortiGate (2) $ set nat enable
Local-FortiGate (2) $ next
Local-FortiGate (policy) $ end
...
```

Which statement is true regarding this failed installation log?

- A. Policy ID 2 is installed without a source address
- B. Policy ID 2 will not be installed
- C. Policy ID 2 is installed in disabled state
- D. Policy ID 2 is installed without a source device

Answer: D

NEW QUESTION 22

- (Exam Topic 1)

In addition to the default ADOMs, an administrator has created a new ADOM named Training for FortiGate devices. The administrator sent a device registration to FortiManager from a remote FortiGate. Which one of the following statements is true?

- A. The FortiGate will be added automatically to the default ADOM named FortiGate.
- B. The FortiGate will be automatically added to the Training ADOM.
- C. By default, the unregistered FortiGate will appear in the root ADOM.
- D. The FortiManager administrator must add the unregistered device manually to the unregistered device manually to the Training ADOM using the Add Device wizard

Answer: C

Explanation:

Reference: <https://docs.fortinet.com/document/fortimanager/7.0.0/administration-guide/718923/root-adom>

NEW QUESTION 23

- (Exam Topic 1)

Refer to the exhibits. Exhibit one.

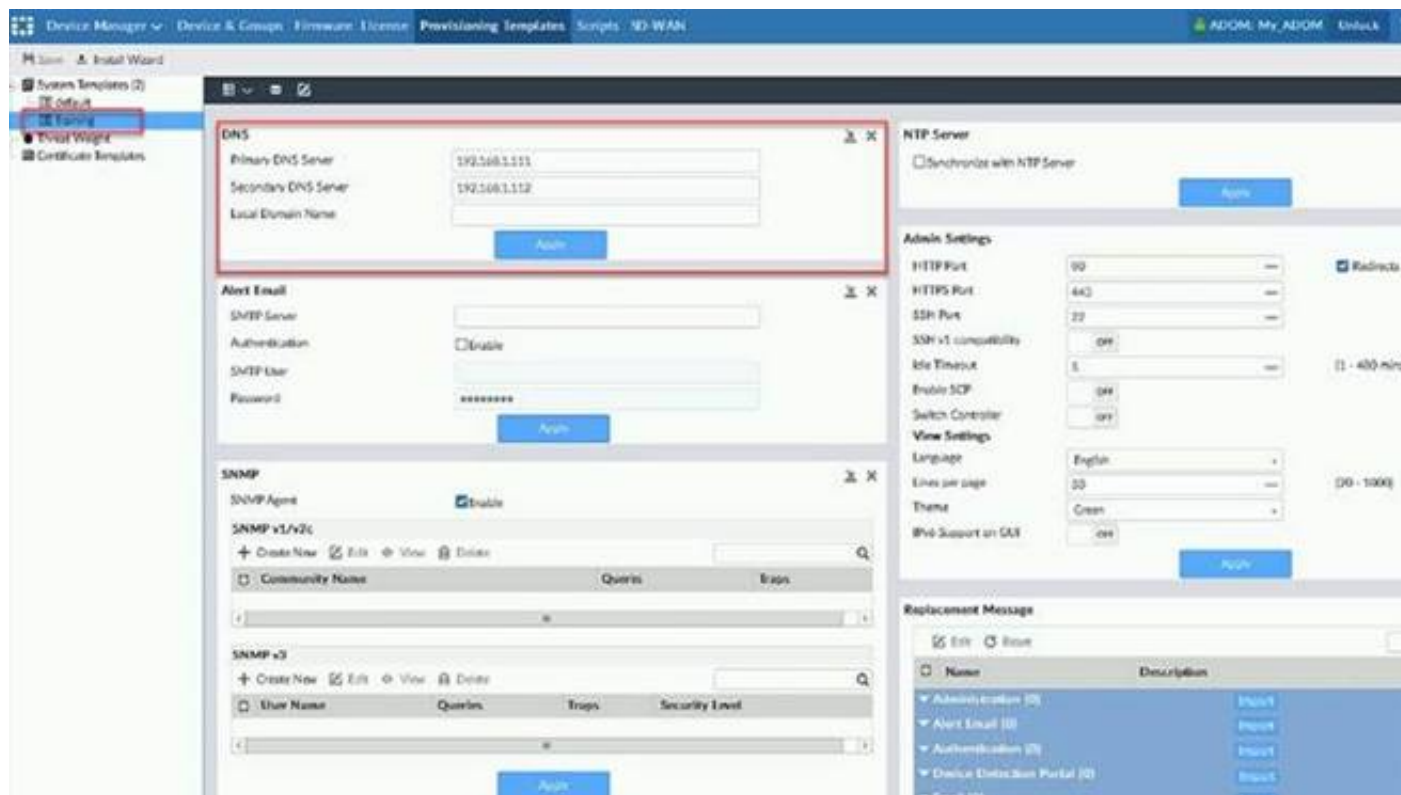
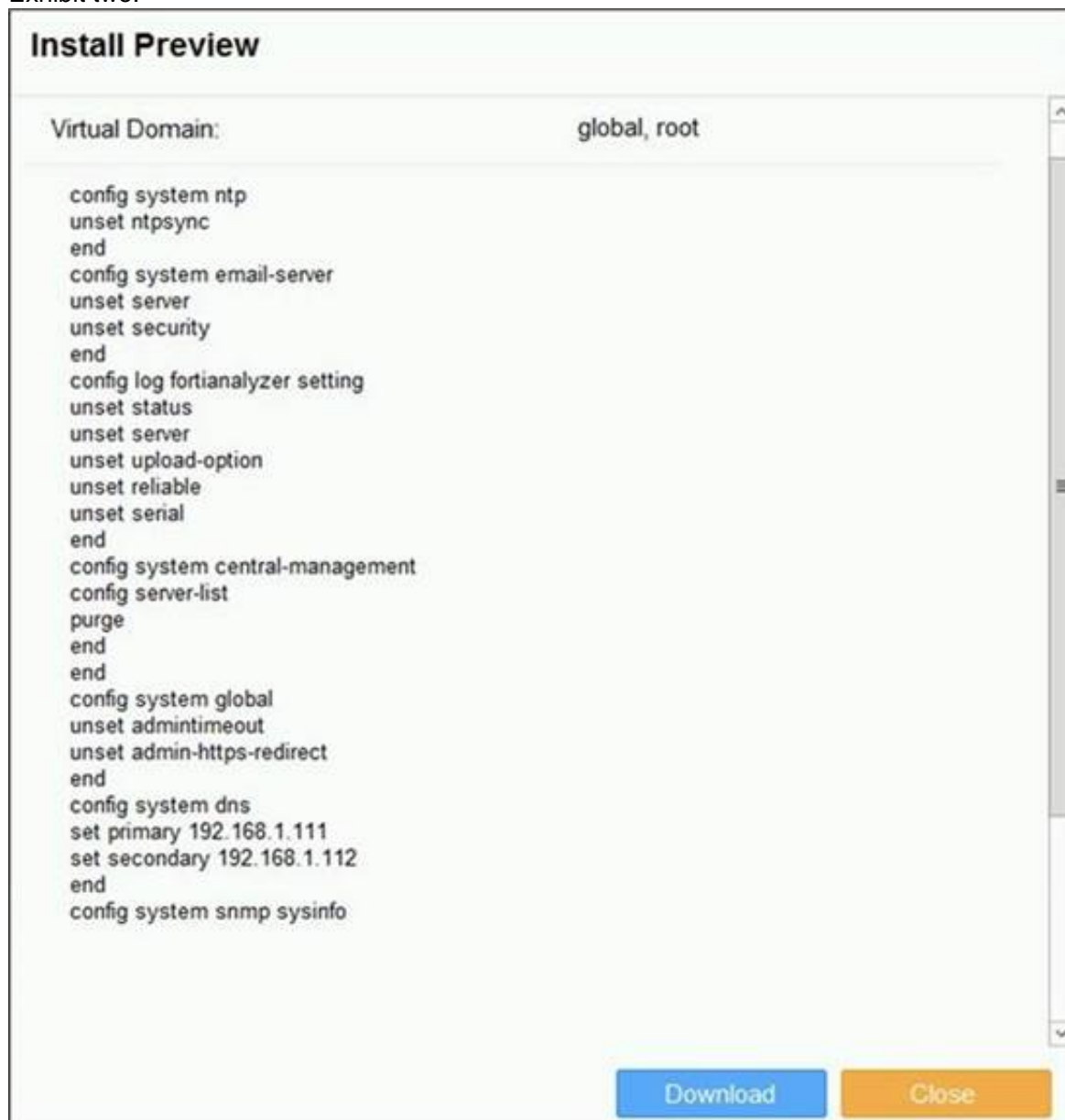


Exhibit two.



An administrator created a new system template named Training with two new DNS addresses on FortiManager. During the installation preview stage, the administrator notices that many unset commands need to be pushed. What can be the main reason for these unset commands?

- A. The DNS addresses in the default system settings are the same as the Training system template
- B. The Training system template has other default settings
- C. The ADOM is locked by another administrator
- D. The Training system template does not have assigned devices

Answer: B

NEW QUESTION 25

- (Exam Topic 1)

Which two conditions trigger FortiManager to create a new revision history? (Choose two.)

- A. When configuration revision is reverted to previous revision in the revision history
- B. When FortiManager installs device-level changes to a managed device
- C. When FortiManager is auto-updated with configuration changes made directly on a managed device
- D. When changes to device-level database is made on FortiManager

Answer: BC

Explanation:

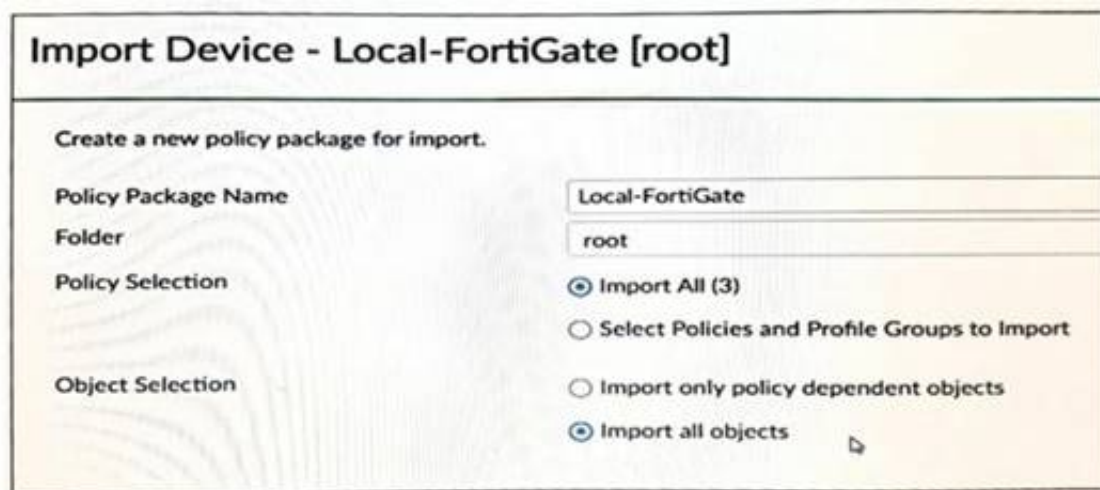
Reference:

https://help.fortinet.com/fmgr/50hlp/56/5-6-1/FortiManager_Admin_Guide/1000_Device%20Manager/1500_M

NEW QUESTION 27

- (Exam Topic 1)

View the following exhibit.



An administrator is importing a new device to FortiManager and has selected the shown options. What will happen if the administrator makes the changes and installs the modified policy package on this managed FortiGate?

- A. The unused objects that are not tied to the firewall policies will be installed on FortiGate
- B. The unused objects that are not tied to the firewall policies will remain as read-only locally on FortiGate
- C. The unused objects that are not tied to the firewall policies locally on FortiGate will be deleted
- D. The unused objects that are not tied to the firewall policies in policy package will be deleted from the FortiManager database

Answer: C

Explanation:

Reference:

<https://community.fortinet.com/t5/FortiManager/Import-all-objects-Versus-Import-only-policy-dependent-objec>

NEW QUESTION 28

- (Exam Topic 1)

An administrator wants to delete an address object that is currently referenced in a firewall policy. What can the administrator expect to happen?

- A. FortiManager will not allow the administrator to delete a referenced address object
- B. FortiManager will disable the status of the referenced firewall policy
- C. FortiManager will replace the deleted address object with the none address object in the referenced firewall policy
- D. FortiManager will replace the deleted address object with all address object in the referenced firewall policy

Answer: C

Explanation:

Reference:

https://help.fortinet.com/fmgr/50hlp/56/5-6-2/FortiManager_Admin_Guide/1200_Policy%20and%20Objects/12

NEW QUESTION 32

- (Exam Topic 1)

When an installation is performed from FortiManager, what is the recovery logic used between FortiManager and FortiGate for an FGFM tunnel?

- A. After 15 minutes, FortiGate will unset all CLI commands that were part of the installation that caused the tunnel to go down.
- B. FortiManager will revert and install a previous configuration revision on the managed FortiGate.
- C. FortiGate will reject the CLI commands that will cause the tunnel to go down.
- D. FortiManager will not push the CLI commands as a part of the installation that will cause the tunnel to go down.

Answer: A

Explanation:

The configuration change will break the fgfm connection, causing the FortiGate unit to attempt to reconnect for 900 seconds. If the FortiGate cannot reconnect, it will rollback to its previous configuration.

NEW QUESTION 33

- (Exam Topic 2)

An administrator is replacing a device on FortiManager by running the following command: `execute device replace sn <devname> <serialnum>`. What device name and serial number must the administrator use?

- A. Device name and serial number of the original device.
- B. Device name and serial number of the replacement device.
- C. Device name of the replacement device and serial number of the original device.
- D. Device name of the original device and serial number of the replacement device.

Answer: D

NEW QUESTION 38

- (Exam Topic 2)

An administrator configures a new firewall policy on FortiManager and has not yet pushed the changes to the managed FortiGate. In which database will the configuration be saved?

- A. Device-level database
- B. Revision history database
- C. ADOM-level database
- D. Configuration-level database

Answer: C

Explanation:

<https://kb.fortinet.com/kb/documentLink.do?externalID=FD47942>

NEW QUESTION 41

- (Exam Topic 2)

Which two items are included in the FortiManager backup? (Choose two.)

- A. FortiGuard database
- B. Global database
- C. Logs
- D. All devices

Answer: BD

Explanation:

Reference: <https://kb.fortinet.com/kb/viewContent.do?externalId=FD34549>

NEW QUESTION 42

- (Exam Topic 2)

What will be the result of reverting to a previous revision version in the revision history?

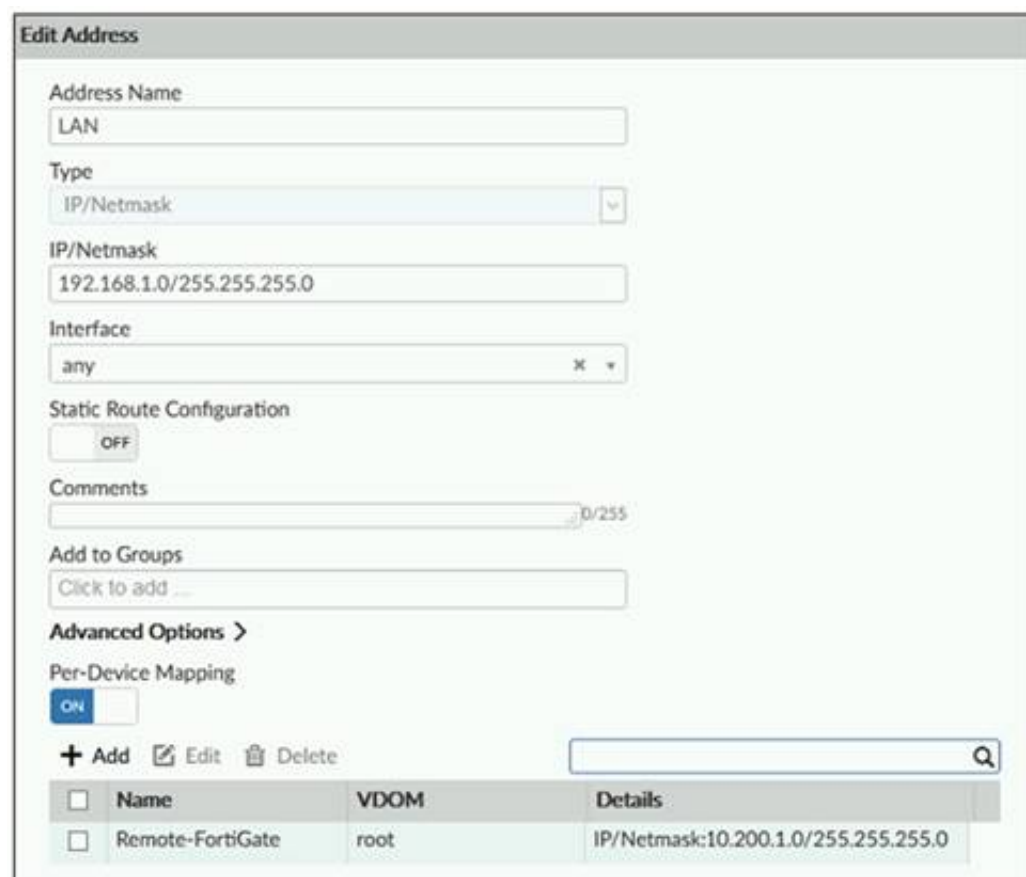
- A. It will install configuration changes to managed device automatically
- B. It will tag the device settings status as Auto-Update
- C. It will generate a new version ID and remove all other revision history versions
- D. It will modify the device-level database

Answer: D

NEW QUESTION 46

- (Exam Topic 2)

Refer to the exhibit.



Name	VDOM	Details
Remote-FortiGate	root	IP/Netmask:10.200.1.0/255.255.255.0

An administrator has created a firewall address object, Training which is used in the Local-FortiGate policy package.

When the installation operation is performed, which IP/Netmask will be installed on the Local-FortiGate, for the Training firewall address object?

- A. 192.168.0.1/24
- B. 10.200.1.0/24
- C. It will create a firewall address group on Local-FortiGate with 192.168.0.1/24 and 10.0.1.0/24 object values.
- D. Local-FortiGate will automatically choose an IP/Netmask based on its network interface settings.

Answer: A

NEW QUESTION 51

- (Exam Topic 2)
Refer to the exhibit.

Create New CLI Script

Script Name

Routing

[View Sample Script]

Comments

Write a comment

0/255

Type

CLI Script

Run script on

Device Database

Script details

```

config router prefix-list
edit public
config rule
edit 1
set prefix 0.0.0.0/0
set action permit
next
edit 2
set prefix 8.8.8.8/32
set action deny
end

```

Advanced Device Filters

>

OK

Cancel

Which two statements are true if the script is executed using the Device Database option? (Choose two.)

- A. You must install these changes using the Install Wizard to a managed device
- B. The successful execution of a script on the Device Database will create a new revision history
- C. The script history will show successful installation of the script on the remote FortiGate
- D. The Device Settings Status will be tagged as Modified

Answer: AD

NEW QUESTION 54

- (Exam Topic 2)
Refer to the exhibit.



An administrator logs into the FortiManager GUI and sees the panes shown in the exhibit.
Which two reasons can explain why the FortiAnalyzer feature panes do not appear? (Choose two.)

- A. The administrator logged in using the unsecure protocol HTTP, so the view is restricted.
- B. The administrator profile does not have full access privileges like the Super_User profile.
- C. The administrator IP address is not a part of the trusted hosts configured on FortiManager interfaces.
- D. FortiAnalyzer features are not enabled on FortiManager.

Answer: BD

NEW QUESTION 56

- (Exam Topic 3)
An administrator has added all the devices in a Security Fabric group to FortiManager. How does the administrator identify the root FortiGate?

- A. By a dollar symbol (\$) at the end of the device name
- B. By an at symbol (@) at the end of the device name
- C. By a QUESTION NO: mark(?) at the end of the device name
- D. By an Asterisk (*) at the end of the device name

Answer: D

NEW QUESTION 58

- (Exam Topic 3)
What does the diagnose dvm check-integrity command do? (Choose two.)

- A. Internally upgrades existing ADOMs to the same ADON version in order to clean up and correct the ADOM syntax
- B. Verifies and corrects unregistered, registered, and deleted device states
- C. Verifies and corrects database schemas in all object tables
- D. Verifies and corrects duplicate VDOM entries

Answer: BD

Explanation:

* 6.2 Study Guide page 305verify and correct parts of the device manager databases, including:– inconsistent device-to-group and group-to-ADOM memberships– unregistered, registered, and deleted device states– device lock statuses– duplicate VDOM entries

NEW QUESTION 60

- (Exam Topic 3)

In addition to the default ADOMs, an administrator has created a new ADOM named Training for FortiGate devices. The administrator authorized the FortiGate device on FortiManager using the Fortinet Security Fabric.
Given the administrator's actions, which statement correctly describes the expected result?

- A. The FortiManager administrator must add the authorized device to the Training ADOM using the Add Device wizard only.
- B. The authorized FortiGate will be automatically added to the Training ADOM.
- C. The authorized FortiGate will appear in the root ADOM.
- D. The authorized FortiGate can be added to the Training ADOM using FortiGate Fabric Connectors.

Answer: C

NEW QUESTION 63

- (Exam Topic 3)

View the following exhibit.

Edit Address

Address Name

Training

Type

IP/Netmask

IP/Network

192.168.1.0/255.255.255.255.0

Interface

any

Static Route Configuration

OFF

Comments

0/255

Add to Groups

Click to add

Advanced Options >

Per-Device Mapping

ON

+ Add

Edit

Delete

Name

VDOM

Details

Local-FortiGate

root

IP/Netmask10.0.10/255.255.255.0

An administrator has created a firewall address object, Training, which is used in the Local-FortiGate policy package. When the install operation is performed, which IP Netmask will be installed on the Local-FortiGate, for the Training firewall address object?

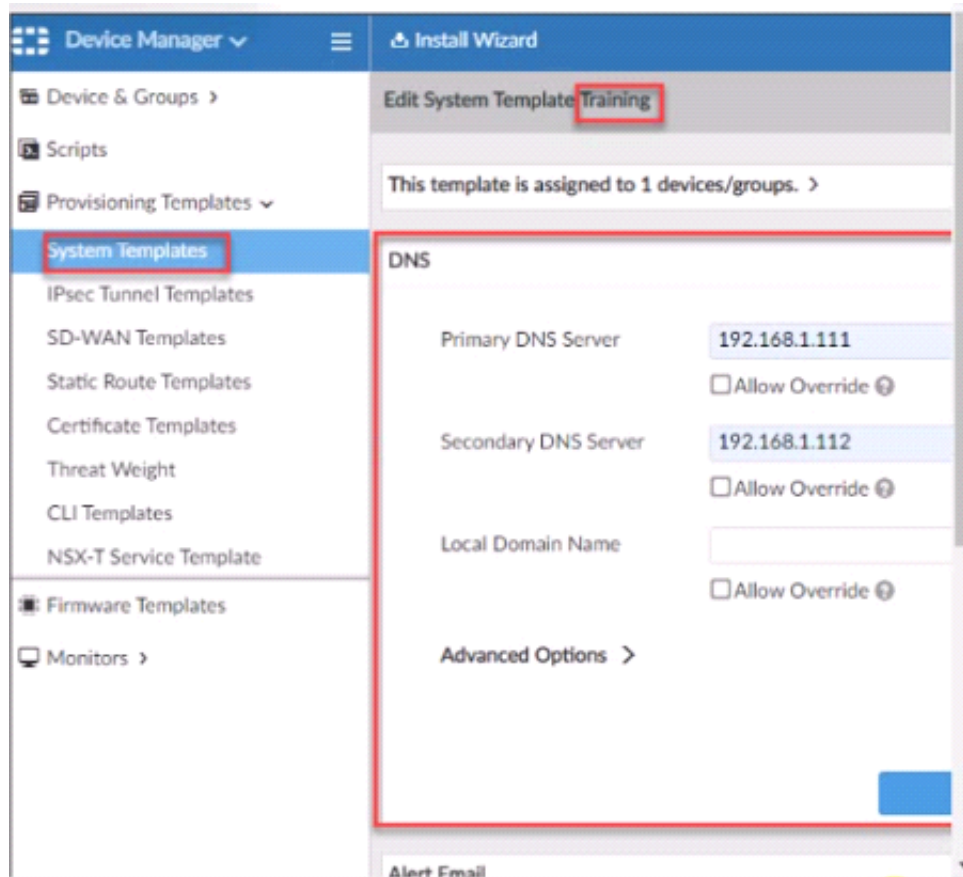
- A. 10.0.1.0/24
- B. It will create firewall address group on Local-FortiGate with 192.168.0.1/24 and 10.0.1.0/24 object values
- C. 192.168.0.1/24
- D. Local-FortiGate will automatically choose an IP Network based on its network interface settings.

Answer: A

NEW QUESTION 66

- (Exam Topic 3)

Refer to the exhibit.



According to the error message why is FortiManager failing to add the FortiAnalyzer device?

- A. The administrator must turn off the Use Legacy Device login and add the FortiAnalyzer device to the same network as Forti-Manager
- B. The administrator must select the Forti-Manager administrative access checkbox on the FortiAnalyzer management interface
- C. The administrator must use the Add Model Device section and discover the FortiAnalyzer device
- D. The administrator must use the correct user name and password of the FortiAnalyzer device

Answer: C

NEW QUESTION 71

- (Exam Topic 3)

An administrator would like to authorize a newly-installed AP using AP Manager. What steps does the administrator need to perform to authorize an AP?

- A. Authorize the new AP using AP Manager and wait until the change is updated on the FortiA
- B. Changes to the AP's state do not require installation.
- C. Changes to the AP's state must be performed directly on the managed FortiGate.
- D. Authorize the new AP using AP Manager and install the policy package changes on the managed FortiGate.
- E. Authorize the new AP using AP Manager and install the device level settings on the managed FortiGate.

Answer: D

NEW QUESTION 76

- (Exam Topic 3)

An administrator is in the process of moving the system template profile between ADOMs by running the following command: `execute improfile import-profile ADOM2 3547 /tmp/myfile` Where does the administrator import the file from?

- A. File system
- B. ADOM1
- C. ADOM2 object database
- D. ADOM2

Answer: D

NEW QUESTION 80

- (Exam Topic 3)

Which of the following statements are true regarding reverting to previous revision version from the revision history? (Choose two.)

- A. To push these changes to a managed device, it required an install operation to the managed FortiGate.
- B. Reverting to a previous revision history will generate a new version ID and remove all other historyversions.
- C. Reverting to a previous revision history will tag the device settings status as Auto-Update.
- D. It will modify device-level database

Answer: AD

NEW QUESTION 84

- (Exam Topic 3)

Refer to the exhibit.


```
Start to import config from device(Local-FortiGate) vdom(root) to
adom(My_ADOM), package(Local-FortiGate_root)

"firewall service category",SKIPPED,"(name=General, oid=697, DUPLICATE)"

"firewall address",SUCCESS,"(name=LOCAL_SUBNET, oid=684, new object)"

"firewall service custom",SUCCESS,"(name=ALL, oid=863, update previous
object)"

"firewall policy",SUCCESS,"(name=1, oid=1090, new object)"
```

Given the configuration shown in the exhibit, how did FortiManager handle the service category named General?

- A. FortiManager ignored the firewall service category General but created a new service category in its database.
- B. FortiManager ignored the firewall service category general and deleted the duplicate value In Its database
- C. FortiManager ignored the firewall service category General and updated the FortiGate duplicate value in the FortiGate database.
- D. FortiManager ignored the firewall service category General and did not update Its database with the value

Answer: C

NEW QUESTION 86

- (Exam Topic 3)

View the following exhibit.

```
Start to import config from device(Local-FortiGate) vdom(root) to adom(My_ADOM), package(Local-
Fortigate_root)

"firewall service category",SKIPPED,"(name=General,oid=697, DUPLICATE)"

"firewall address", SUCCESS,"(name=LOCAL_SUBNET,oid=684,new object)"

"firewall service custom",SUCCESS,"(name=ALL,oid=863,update previous object)"

"firewall policy",SUCCESS,"(name=1,oid-1090, new object)"
```

Which one of the following statements is true regarding the object named ALL?

- A. FortiManager updated the object ALL using FortiGate's value in its database
- B. FortiManager updated the object ALL using FortiManager's value in its database
- C. FortiManager created the object ALL as a unique entity in its database, which can be only used by this managed FortiGate.
- D. FortiManager installed the object ALL with the updated value.

Answer: A

NEW QUESTION 90

.....

Relate Links

100% Pass Your NSE5_FMG-7.2 Exam with ExamBible Prep Materials

https://www.exambible.com/NSE5_FMG-7.2-exam/

Contact us

We are proud of our high-quality customer service, which serves you around the clock 24/7.

Viste - <https://www.exambible.com/>