



# Microsoft

## Exam Questions AZ-140

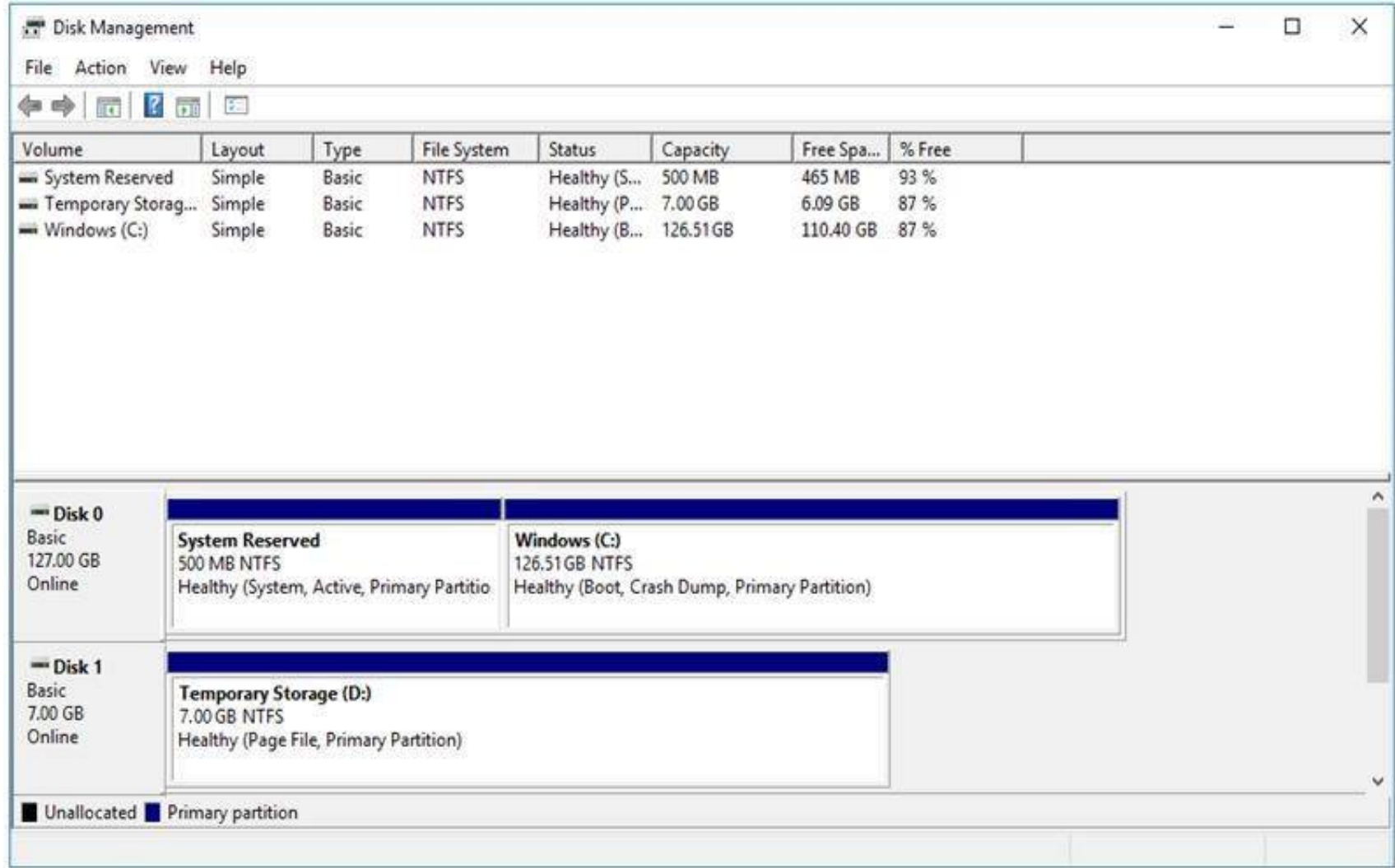
Configuring and Operating Windows Virtual Desktop on Microsoft Azure

NEW QUESTION 1

- (Exam Topic 3)

You have a Windows Virtual Desktop deployment.

You have a session host named Host1 that has the disk layout shown in the exhibit. (Click the Exhibit tab.)



You plan to deploy an app that must be installed on D. The app requires 500 GB of disk space.

You need to add a new data disk that will be assigned the drive letter D. The solution must maintain the current performance of Host1.

Which four actions should you perform in sequence? To answer, move the appropriate actions from the list of actions to the answer area and arrange them in the correct order.

**Actions**

Move the page file to drive C.

Move the page file to Temporary Storage.

Change the drive letter of Temporary Storage (D:).

Mark Temporary Storage (D:) as **Active**.

Add the new disk and assign drive D.

Move the page file to System Reserved.

**Answer Area**

<

>

↑

↓

- A. Mastered
- B. Not Mastered

Answer: A

Explanation:

Reference:

<https://www.azurecorner.com/change-temporary-drive-azure-vm-use-d-persistent-data-disks/>

NEW QUESTION 2

- (Exam Topic 3)

You have an Azure Virtual Desktop deployment.

You need to recommend a solution to run containerized applications without installing the applications on the session hosts.

What should you include in the recommendation?

- A. EXE applications
- B. MSI packages
- C. APPX app packages
- D. MSIX app packages

**Answer:** D

**Explanation:**

Reference:

<https://docs.microsoft.com/en-us/windows/msix/msix-container>

**NEW QUESTION 3**

- (Exam Topic 3)

You have an Azure Virtual Desktop deployment and the users shown in the following table.

Name	User device operating system	Preferred web browser
User1	MacOS	Mozilla Firefox
User2	Windows 10	Internet Explorer
User3	iOS	Apple Safari

All the users plan to use a web browser to access Azure Virtual Desktop resources. Which users can connect to Azure Virtual Desktop by using their preferred browser?

- A. User2 only
- B. User1 only
- C. User1, User2, and User3
- D. User2 and User3 only
- E. User1 and User2 only

**Answer:** B

**Explanation:**

<https://learn.microsoft.com/en-us/azure/virtual-desktop/users/connect-web>

**NEW QUESTION 4**

- (Exam Topic 3)

You have an Azure Virtual Desktop deployment.

You need to create a host pool. The solution must ensure that during periods of low CPU usage, credits can be accumulated, and then used to raise performance above the purchased baseline during periods of high CPU usage.

Which virtual machine series should you specify when you create the pool?

- A. A-series
- B. D-series
- C. H-series
- D. B-series

**Answer:** B

**Explanation:**

Reference:

<https://docs.microsoft.com/en-us/azure/virtual-machines/sizes-b-series-burstable>

**NEW QUESTION 5**

- (Exam Topic 3)

You have an Azure subscription that contains the resources shown in the following table.

Name	Description
AVDVM-0	A virtual machine used in a pooled virtual machine set
share1	An Azure file share that stores FSLogix profile containers
Image1	A custom Windows 10 image in a shared image gallery
Image2	A custom Windows Server 2019 image stored in Azure Blob storage

You create a recovery services vault named Vault1.

Which resources can you back up using Azure Backup to Vault1?

- A. AVDVM-0 only
- B. AVDVM-0 and share1 only
- C. AVDVM-0, Image1 and Image2 only
- D. AVDVM-0, share1 and Image1 only
- E. AVDVM-0, share1, Image1 and Image2

**Answer:** B

**Explanation:**

<https://docs.microsoft.com/en-us/azure/backup/backup-overview#what-can-i-back-up> Operational backup of blobs is a local backup solution. So the backup data isn't transferred to the Backup vault

NEW QUESTION 6

- (Exam Topic 3)

You have a Azure Virtual Desktop deployment that contains multiple host pools.  
You need to create a PowerShell script to sign users out of a specific session host before you perform a maintenance task.  
Which PowerShell module should you load in the script?

- A. Az.Automation
- B. Az.COMputC
- C. Az.Maintenance
- D. Az.DektopVirtualization

Answer: D

Explanation:

Reference:  
<https://docs.microsoft.com/en-us/powershell/module/az.desktopvirtualization/?view=azps-6.6.0#desktopvirtualiz> <https://techgenix.com/logging-off-and-removing-wvd-user-sessions/>

NEW QUESTION 7

- (Exam Topic 3)

You have an Azure subscription named Subscription that contains an Azure Virtual Desktop host pool named HostPool1.  
HostPool1 is managed by using Microsoft Intune. Subscription1 contains 50 users that connect to HostPool1 by using computers that run Windows 10.  
You need to prevent the users from copying files between an Azure Virtual Desktop session and the computers. The solution must minimize administrative effort.  
What should you do?

- A. Modify the RDP properties of HostPool1.
- B. Create a Conditional Access policy in Azure Active Directory (Azure AD).
- C. Create a compliance policy in Intune.
- D. Create a configuration profile in Intune.

Answer: A

NEW QUESTION 8

- (Exam Topic 3)

You network contains an on-premises Active Directory domain that syncs to an Azure Active Directory (Azure AD) tenant. The domain contains the users shown in the following table.

Name	Role	Member of
User1	Desktop Virtualization Workspace Reader	Group1
User2	Desktop Virtualization Application Group Reader	Group2

You have a Windows Virtual Desktop deployment that contains the application groups shown in the following table.

Name	Application	Assignment
AppGroup1	Microsoft Word	Group1
AppGroup2	Microsoft Excel	Group2
AppGroup3	Microsoft PowerPoint	Group1, Group2

You have the workspaces shown in the following table.

Name	Application group
Workspace1	AppGroup1
Workspace2	AppGroup2

For each of the following statements, select Yes if the statement is true. Otherwise, select No. NOTE: Each correct selection is worth one point.

Answer Area

Statements	Yes	No
User1 has PowerPoint listed in the Remote Desktop client.	<input type="radio"/>	<input type="radio"/>
User1 has Word listed in the Remote Desktop client.	<input type="radio"/>	<input type="radio"/>
User2 has PowerPoint listed in the Remote Desktop client.	<input type="radio"/>	<input type="radio"/>

- A. Mastered
- B. Not Mastered

Answer: A

Explanation:



Reference:

<https://docs.microsoft.com/en-us/azure/virtual-desktop/environment-setup>

#### NEW QUESTION 9

- (Exam Topic 3)

You have an Azure Virtual Desktop deployment.

You need to monitor the deployment by using the Azure Virtual Desktop Insights solution in Azure Monitor. What should you use as the Diagnostic settings destination for the host pool?

- A. Event hub
- B. Log Analytics workspace
- C. Storage account

**Answer: B**

#### NEW QUESTION 10

- (Exam Topic 3)

You have a Windows Virtual Desktop deployment that contains the following:

- A host pool named Pool1
  - Two session hosts named Host1 and Host2
  - An application group named RemoteAppGroup1 that contains a RemoteApp named App1
- You need to prevent users from copying and pasting between App1 and their local device.

What should you do?

- A. Create an AppLocker policy.
- B. Modify the locks of RemoteAppGroup1.
- C. Modify the locks of RemoteAppGroup1.
- D. Modify the RDP Properties of Pool1.

**Answer: D**

#### Explanation:

Reference:

<https://docs.microsoft.com/en-us/azure/virtual-desktop/customize-rdp-properties>

#### NEW QUESTION 10

- (Exam Topic 3)

Note: This question is part of a series of questions that present the same scenario. Each question in the series contains a unique solution that might meet the stated goals. Some question sets might have more than one correct solution, while others might not have a correct solution.

After you answer a question in this section, you will NOT be able to return to it. As a result, these questions will not appear in the review screen.

You have an Azure Virtual Desktop host pool that runs Windows 10 Enterprise multi-session. User sessions are load-balanced between the session hosts. Idle session timeout is 30 minutes. You plan to shut down a session host named Host1 to perform routine maintenance.

You need to prevent new user sessions to Host1 without disconnecting active user sessions. Solution: From the host pool, you remove Host1 from the session host list.

Does this meet the goal?

- A. Yes
- B. No

**Answer: B**

#### Explanation:

Reference:

<https://docs.microsoft.com/en-us/azure/virtual-desktop/drain-mode>

#### NEW QUESTION 12

- (Exam Topic 3)

Note: This question is part of a series of questions that present the same scenario. Each question in the series contains a unique solution that might meet the stated goals. Some question sets might have more than one correct solution, while others might not have a correct solution.

After you answer a question in this section, you will NOT be able to return to it. As a result, these questions will not appear in the review screen.

You have the following:

- A Microsoft 365 E5 tenant
- An on-premises Active Directory domain
- A hybrid Azure Active Directory (Azure AD) tenant
- An Azure Active Directory Domain Services (Azure AD DS) managed domain
- An Azure Virtual Desktop deployment

The Azure Virtual Desktop deployment contains personal desktops that are hybrid joined to the on-premises domain and enrolled in Microsoft Intune.

You need to configure the security settings for the Microsoft Edge browsers on the personal desktops. Solution: You configure a compliance policy in Intune.

Does this meet the goal?

- A. Yes
- B. No

**Answer: B**

#### Explanation:

You need to configure a Configuration Profile in Intune or use Group Policy.

#### NEW QUESTION 16

- (Exam Topic 2)

You need to ensure that you can implement user profile shares for the Boston office users. The solution must meet the user profile requirements.

Which four actions should you perform in sequence? To answer, move the appropriate actions from the list of actions to the answer area and arrange them in the correct order.

##### Actions

Create a file share and configure share permissions.

Sign in to VM1 as Admin1.

Run the `Join-AzStorageAccountForAuth` cmdlet.

Sign in to VM1 as CloudAdmin1.

Install the `AzFilesHybrid` PowerShell module.

##### Answer Area



- A. Mastered
- B. Not Mastered

**Answer:** A

##### Explanation:

Reference:

<https://www.christiaanbrinkhoff.com/2020/03/01/learn-here-how-to-configure-azure-files-with-active-directory>

#### NEW QUESTION 20

- (Exam Topic 2)

You need to ensure the resiliency of the user profiles for the Boston office users. The solution must meet the user performance requirements.

What should you do?

- A. Modify the Account kind setting of storage1.
- B. Modify the replication settings of storage1.
- C. Implement Azure Site Recovery.
- D. Configure Cloud Cache.

**Answer:** D

##### Explanation:

Reference:

<https://docs.microsoft.com/en-us/azure/architecture/example-scenario/wvd/windows-virtual-desktop-fslogix>

#### NEW QUESTION 25

- (Exam Topic 2)

Which two roles should you assign to Admin2 to meet the security requirements? Each correct answer presents part of the solution.

NOTE: Each correct selection is worth one point.

- A. Desktop Virtualization Host Pool Contributor
- B. Desktop Virtualization Application Group Contributor
- C. Desktop Virtualization Workspace Contributor
- D. Desktop Virtualization Application Group Reader
- E. User Access Administrator

**Answer:** CD

##### Explanation:

Reference:

<https://docs.microsoft.com/en-us/azure/virtual-desktop/rbac>

#### NEW QUESTION 30

- (Exam Topic 2)

You need to implement network security to meet the security requirements and the performance requirements. Which two actions should you perform? Each correct answer presents a complete solution.

NOTE: Each correct selection is worth one point.

- A. Deploy two Azure Firewall instances and Azure Firewall Manager.
- B. Filter traffic by using outbound rules.
- C. Filter traffic by using infrastructure rules.
- D. Filter traffic by using inbound rules.
- E. Deploy a network security group (NSG) and two application security groups.

F. Deploy an Azure Firewall instance and Azure Firewall Manager.

**Answer:** AB

**Explanation:**

Reference:

<https://docs.microsoft.com/en-us/azure/firewall/protect-windows-virtual-desktop>

**NEW QUESTION 31**

- (Exam Topic 2)

You need to configure the user settings of Admin1 to meet the user profile requirements. What should you do?

- A. Modify the membership of the FSLogix ODFC Exclude List group.
- B. Modify the membership of the FSLogix Profile Exclude List group.
- C. Modify the HKLM\SOFTWARE\FSLogix\Profiles registry settings.
- D. Modify the HKLM\SOFTWARE\FSLogix\ODFC registry settings.

**Answer:** A

**Explanation:**

Reference:

<https://docs.microsoft.com/en-us/fslogix/overview>

<https://docs.microsoft.com/en-us/fslogix/configure-profile-container-tutorial#set-up-include-and-exclude-usergr>

**NEW QUESTION 35**

- (Exam Topic 1)

Which three PowerShell modules should you install on Server1 to meet the technical requirements? Each correct answer presents part of the solution.

NOTE: Each correct selection is worth one point.

- A. Pester
- B. RemoteDesktop
- C. ServerManager
- D. ActiveDirectory
- E. Hyper-V

**Answer:** ADE

**Explanation:**

Contoso identifies the following technical requirements:

➤ From a server named Server1, convert the user profile disks to the FSLogix profile containers.

The PowerShell modules for Hyper-V, Active Directory, and Pester are prerequisites to running the cmdlets to convert user profile disks to FSLogix.

Reference:

<https://docs.microsoft.com/en-us/azure/cloud-adoption-framework/migrate/azure-best-practices/contoso-migrati>

**NEW QUESTION 36**

- (Exam Topic 3)

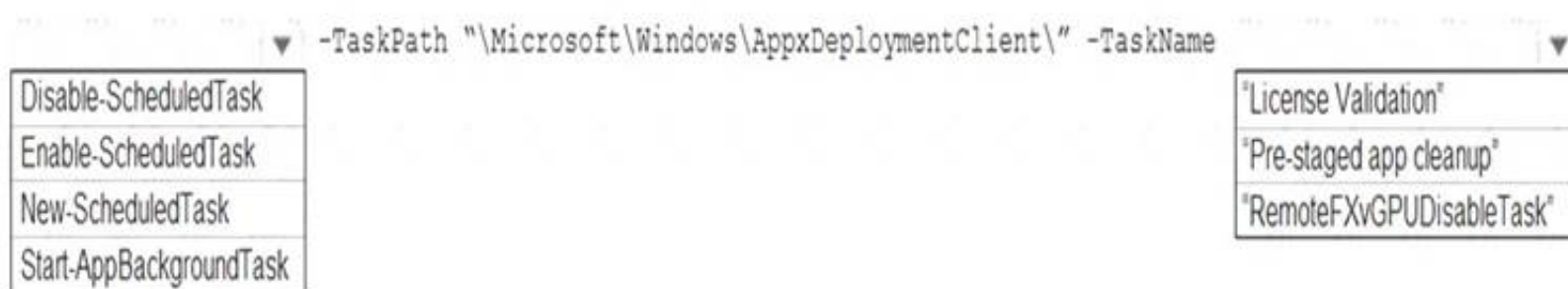
You have an Azure virtual machine named VM1 that runs Windows 10 Enterprise multi-session.

You plan to add language packs to VM1 and create a custom image of VM1 for a Windows Virtual Desktop host pool.

You need to ensure that modern apps can use the additional language packs when you deploy session hosts by using the custom image.

Which command should you run first? To answer, select the appropriate options in the answer area.

NOTE: Each correct selection is worth one point.



- A. Mastered
- B. Not Mastered

**Answer:** A

**Explanation:**

Reference:

<https://docs.microsoft.com/en-us/troubleshoot/windows-server/deployment/issues-appx-cleanup-maintenance-ta> <https://docs.microsoft.com/en-us/powershell/module/scheduledtasks/disable-scheduledtask?view=windowsserve>

**NEW QUESTION 41**

- (Exam Topic 3)

You have an Azure subscription that contains a virtual machine named VM1. VM1 runs a customized version of Windows 10 Enterprise.

You generalize the operating system on VM1 and shut down the virtual machine.

You need to deploy additional virtual machines based on an image of VM1 by using the Azure portal.  
Which three actions should you perform in sequence? To answer, move the appropriate actions from the list of actions to the answer area and arrange them in the correct order.  
Select and Place:

Actions

Create an image version.

Create an Azure compute gallery.

Generate a snapshot of VM1.

Create an image definition.

Back up VM1.

Answer Area

- A. Mastered
- B. Not Mastered

Answer: A

Explanation:  
A picture containing graphical user interface Description automatically generated

NEW QUESTION 46  
- (Exam Topic 3)  
You have an Azure subscription.  
You plan to deploy an Azure Virtual Desktop solution to the East US Azure region. The solution will contain the resources shown in the following table.

Type	Name	Description
Azure storage account	storage1	Contains a share named Profiles
Host pool	HostPool1	Stores user profiles in the Profiles share

You need to recommend a business continuity solution that meets the following requirements:  
\* Users must be able to connect to HostPool1 if a datacenter in the East US region fails.  
\* Costs must be minimized.  
What should you include in the recommendation for each resource? To answer, select the appropriate options in the answer area.  
NOTE: Each correct selection is worth one point.

Answer Area

HostPool1:

Availability zones

Azure Backup

Azure Site Recovery

Azure Traffic Manager

storage1:

Geo-redundant storage (GRS)

Geo-zone-redundant storage (GZRS)

Locally-redundant storage (LRS)

Zone-redundant storage (ZRS)

- A. Mastered
- B. Not Mastered

Answer: A

Explanation:  
Availability Zones & ZRS storage.

NEW QUESTION 47  
- (Exam Topic 3)



You have an Azure Virtual Desktop host pool named Pool1 that contains three session hosts. The session hosts are configured to use FSLogix profiles. On a management computer, you create an Application Masking rule and assignment files. You need to apply Application Masking to the session hosts in Pool1. What should you do?

- A. Generate a registration token.
- B. Install the FSLogix agent on the session hosts in Pool1.
- C. Compile the rule and assignment files.
- D. Copy the files to the session hosts in Pool1.

**Answer:** D

**Explanation:**

Reference:

<https://cloudbuild.co.uk/fslogix-application-masking-in-windows-virtual-desktop/>

**NEW QUESTION 51**

- (Exam Topic 3)

You have an Azure Virtual Desktop deployment that contains the session hosts shown in the following table.

Name	Configuration
Host1	RDP Shortpath for managed networks is enabled.
Host2	RDP Shortpath for managed networks is not configured.

You have the users shows in the following table.

Name	Remote Desktop client type
User1	Windows desktop
User2	Web

Users connect to Azure from the locations shown in the following table.

Name	Connection type
Location1	Site-to-Site VPN
Location2	Internet

For each of the following statements, select Yes if the statement is true. Otherwise, select No. NOTE: Each correct selection is worth one point.

## Answer Area

Statements	Yes	No
RDP Shortpath is used when User2 is in Location1 and connects to Host1.	<input type="radio"/>	<input type="radio"/>
RDP Shortpath is used when User1 is in Location1 and connects to Host2.	<input type="radio"/>	<input type="radio"/>
RDP Shortpath is used when User1 is in Location2 and connects to Host1.	<input type="radio"/>	<input type="radio"/>

- A. Mastered
- B. Not Mastered

**Answer:** A

**Explanation:**

Text, letter Description automatically generated

**NEW QUESTION 55**

- (Exam Topic 3)

You plan to deploy Windows Virtual Desktop. Users have the devices shown in the following table.

Type	Platform
Tablet	Windows 10 Pro
Phone	Android
Laptop	macOS

From which device types can the users connect to Windows Virtual Desktop resources by using the Remote Desktop client app and the Remote Desktop web client? To answer, select the appropriate options in the answer area.

NOTE: Each correct selection is worth one point.

## Answer Area

Remote Desktop client app:

▼
Tablet only
Tablet and phone only
Tablet and laptop only
Tablet, phone, and laptop

Remote Desktop web client:

▼
Tablet only
Tablet and phone only
Tablet and laptop only
Tablet, phone, and laptop

- A. Mastered  
 B. Not Mastered

**Answer:** A

### Explanation:

Reference:

<https://docs.microsoft.com/en-us/azure/virtual-desktop/connect-web> <https://docs.microsoft.com/en-us/azure/virtual-desktop/connect-android>  
<https://docs.microsoft.com/en-us/azure/virtual-desktop/connect-macos>

## NEW QUESTION 59

- (Exam Topic 3)

You have an on-premises network and an Azure subscription. The subscription contains the following virtual network:

- \* Name: VNet1
- \* Address space: 10.10.0.0/16
- \* Subnet name: Subnet1
- \* Subnet1 address range: 10.10.0.0/16

You deploy an Azure Virtual Desktop host pool that contains 10 session hosts to Subnets.

You plan to deploy a VPN gateway to VNet1 and provide the session hosts with access to the on-premises network.

You need to ensure that you can deploy the VPN gateway.

What should you do first?

- A. Modify the address range of Subnet1. Most Voted  
 B. Add a subnet named GatewaySubnet to VNet1.  
 C. Modify the address space of VNet1. Most Voted  
 D. Associate a network security group (NSG) to Subnet1.

**Answer:** B

### Explanation:

In order to deploy a VPN gateway to VNet1, you should first add a subnet named GatewaySubnet to VNet1. According to the Microsoft Official Guide AZ-140, "You must create a gateway subnet for the virtual network that you plan to use for the gateway. The subnet must be named GatewaySubnet and it must use an address range that is large enough to accommodate the number of IP addresses that you plan to use for the gateway and its supporting resources." Therefore, the first step to ensure that you can deploy the VPN gateway is to add a subnet named GatewaySubnet to VNet1.

## NEW QUESTION 62

- (Exam Topic 3)

You have an Azure Virtual Desktop Deployment that contains a workspace named Workspace1 and a user named User1. Workspace1 contains a Desktop application group named Pool1Desktop.

At 09:00, you create a conditional access policy that has the following settings:

- Assignments:
  - Users and groups: User1
  - Cloud apps or actions: Azure Virtual Desktop
  - Conditions: 0 conditions selected
- Access controls
  - Grant: Grant access, Require multi-factor authentication
  - Sessions: Sign-in frequency 1 hour

User1 performs the actions shown in the following table.

Time	Action
09:10	Open the Remote Desktop client and subscribe to Workspace1.
09:20	Connect to Pool1Desktop.
11:10	Sign out of Pool1Desktop and close the Remote Desktop client.
12:30	Open the Remote Desktop client.
13:50	Connect to Pool1Desktop

For each of the following statements, select Yes if the statement is true. Otherwise, select No.

NOTE: Each correct selection is worth one point.

Statements	Yes	No
User1 is prompted for multi-factor authentication (MFA) at 09:10.	<input type="radio"/>	<input type="radio"/>
User1 is prompted for multi-factor authentication (MFA) at 10:20.	<input type="radio"/>	<input type="radio"/>
User1 is prompted for multi-factor authentication (MFA) at 13:50.	<input type="radio"/>	<input type="radio"/>

- A. Mastered
- B. Not Mastered

Answer: A

Explanation:

Text Description automatically generated

Reference:

<https://docs.microsoft.com/en-us/azure/virtual-desktop/set-up-mfa>

NEW QUESTION 63

- (Exam Topic 3)

After you answer a question in this section, you will NOT be able to return to it. As a result, these questions will not appear in the review screen.

You have an Azure Virtual Desktop host pool that runs Windows 10 Enterprise multi-session. User sessions are load-balanced between the session hosts. Idle session timeout is 30 minutes. You plan to shut down a session host named Host1 to perform routine maintenance.

You need to prevent new user sessions to Host1 without disconnecting active user sessions.

Solution: From the properties of the virtual machine of Host1, you configure the Auto-shutdown settings. Does this meet the goal?

- A. Yes
- B. No

Answer: B

Explanation:

Reference:

<https://docs.microsoft.com/en-us/azure/virtual-desktop/drain-mode>

NEW QUESTION 65

- (Exam Topic 3)

You have an Azure Virtual Desktop host pool in the US East Azure region.

You need to ensure that the host pool can fail over to the US West Azure region. What should you do first?

- A. Create a Recovery Services vault.
- B. Create a virtual machine snapshot of each session host.
- C. Create an Azure Storage account that uses geo-redundant storage (GRS).
- D. Create a new host pool.

Answer: A

Explanation:

Reference:

<https://docs.microsoft.com/en-us/azure/site-recovery/azure-to-azure-tutorial-enable-replication>

NEW QUESTION 68

- (Exam Topic 3)

You create the virtual machines shown in the following table.

Name	State
SourceVM1	Specialized state
SourceVM2	Generalized state
SourceVM3	Audit mode

You need a source virtual hard disk for new Azure Virtual Desktop session host deployments. The source operating system must have user-specific and machine-specific information removed.

Which virtual machines can you use as the source?

- A. SourceVM3 only
- B. SourceVM1 only
- C. SourceVM1, SourceVM2, and SourceVM3
- D. SourceVM1 and SourceVM2 only
- E. SourceVM2 only



**Answer:** E

#### NEW QUESTION 73

- (Exam Topic 3)

You have an Azure subscription that contains 500 users. The users are assigned Microsoft Office 365 E1 licenses.

You deploy an Azure Virtual Desktop solution that contains Windows 10 multi-session hosts and streams a custom remote app named App1.

You need to ensure that the users are licensed to stream App1. The solution must minimize costs. Which license should you use?

- A. Microsoft 365 E5
- B. Office 365 E3
- C. a Remote Desktop Services (RDS) client access license (CAL)
- D. Windows 10 Enterprise E3

**Answer:** D

#### Explanation:

<https://azure.microsoft.com/en-us/pricing/details/virtual-desktop/>

#### NEW QUESTION 74

- (Exam Topic 3)

You have an Azure Virtual Desktop deployment.

The session hosts are joined to an on-premises Active Directory domain named contoso.com. You need to limit user sessions to three hours.

What should you configure?

- A. a Group Policy Object (GPO) in contoso.com.
- B. the properties of the workspace
- C. the RDP Properties of a host pool
- D. just-in-time (JIT) VM access

**Answer:** A

#### NEW QUESTION 77

- (Exam Topic 3)

You have a Azure Virtual Desktop deployment. You Implement FSLogix profile container.

You need to ensure that the FSLogix profile containers are not used for specific users. What should you do?

- A. Modify the RDP Properties of the host pool.
- B. Apply an Application Masking rule to each session host.
- C. Apply an AppLocker policy to each session host.
- D. Modify the local groups on each session host.

**Answer:** D

#### Explanation:

Reference:

<https://docs.microsoft.com/en-us/fslogix/configure-profile-container-tutorial>

#### NEW QUESTION 80

- (Exam Topic 3)

You have an Azure Virtual Desktop pooled host pool named HostPool1.

You need to dynamically allocate resources to HostPool1 based on the number of sessions for each host. What should you create?

- A. a load balancer rule
- B. a scaling plan
- C. a virtual machine scale set
- D. an availability set

**Answer:** B

#### NEW QUESTION 83

- (Exam Topic 3)

Your network contains an on-premises Active Directory domain named contoso.com that syncs to an Azure Active Directory (Azure AD) tenant.

You have an Azure Virtual Desktop host pool named Pool1 that has the following settings:

- Host pool name: Pool1
- Host pool type: Personal
- Load balancing algorithm: Breadth-first
- Number of VMs: 3

The session hosts have the following configurations:

- Image used to create the virtual machines: Windows 10 Enterprise
- Virtual machines domain-joined to: On-premises contoso.com domain

You need to ensure that you can use Microsoft EndPoint Manager to manage security update on the session hosts.

What should you do?

- A. Create Windows 10 Enterprise multi-session images
- B. Configure the session hosts as hybrid Azure AD-joined
- C. Change Host pool type to Pooled



D. Change Load balancing algorithm to Depth-first

**Answer:** B

**Explanation:**

By configuring the session hosts as hybrid Azure AD-joined, you can use Microsoft EndPoint Manager to manage security updates on the session hosts. Hybrid Azure AD join is a feature that allows devices to be joined to both on-premises Active Directory and Azure AD. This enables device management scenarios such as remote wipe, device compliance, and conditional access. Once the session hosts are hybrid Azure AD-joined, you can use Microsoft EndPoint Manager to manage security updates on the session hosts.

**NEW QUESTION 88**

- (Exam Topic 3)

You have a Windows Virtual Desktop host pool.

You need to install Microsoft Antimalware for Azure on the session hosts. What should you do?

- A. Add an extension to each session host.
- B. From a Group Policy Object (GPO), enable Windows 10 security features.
- C. Configure the RDP Properties of the host pool.
- D. Sign in to each session host and install a Windows feature.

**Answer:** A

**Explanation:**

Reference:

<https://docs.microsoft.com/en-us/azure/security/fundamentals/antimalware>

**NEW QUESTION 93**

- (Exam Topic 3)

You plan to deploy Windows Virtual Desktop to meet the department requirements shown in the following table.

Department	Required Windows Virtual Desktop resource	Number of users	GPU required
Research	Single-session desktop	10	No
Engineering	Multi-session desktop	50	Yes
IT	Multi-session desktop	50	No
Finance	RemoteApp	10	No

You plan to use Windows Virtual Desktop host pools with load balancing and autoscaling.

You need to recommend a host pool design that meets the requirements. The solution must minimize costs. What is the minimum number of host pools you should recommend?

- A. 1
- B. 2
- C. 3
- D. 4

**Answer:** C

**Explanation:**

Reference:

<https://docs.microsoft.com/en-us/azure/virtual-desktop/create-host-pools-azure-marketplace>

3 Host Pools - The RemoteApp can be joined inside the IT Multi-Session desktop or the Engineering. <https://docs.microsoft.com/en-us/azure/virtual-desktop/manage-app-groups> The default app group created for a new Azure Virtual Desktop host pool also publishes the full desktop. In addition, you can create one or more RemoteApp application groups for the host pool.

**NEW QUESTION 95**

- (Exam Topic 3)

You have an Azure Virtual Desktop deployment.

You are configuring the outbound firewall settings for the host pool.

Which outbound URL and outbound port should you configure to ensure that the host machines maintain Windows activation? To answer, select the appropriate options in the answer area.

NOTE: Each correct selection is worth one point.

**Answer Area**

Outbound URL:

☒ \*.wvd.microsoft.us  
☒ \*.eh.servicebus.windows.net  
☒ gcs.prod.monitoring.core.windows.net  
☒ kms.core.windows.net

Outbound port:

☒ 80  
☒ 389  
☒ 443  
☒ 1688

- A. Mastered
- B. Not Mastered

**Answer:** A

**Explanation:**

Reference:

<https://docs.microsoft.com/en-us/azure/virtual-desktop/safe-url-list>

**NEW QUESTION 96**

- (Exam Topic 3)

Note: This question is part of a series of questions that present the same scenario. Each question in the series contains a unique solution that might meet the stated goals. Some question sets might have more than one correct solution, while others might not have a correct solution.

After you answer a question in this section, you will NOT be able to return to it. As a result, these questions will not appear in the review screen.

You have a Windows Virtual Desktop host pool named Pool1 that is integrated with an Azure Active Directory Domain Services (Azure AD DS) managed domain. You need to configure idle session timeout settings for users that connect to the session hosts in Pool1. Solution: From an Azure AD DS-joined computer, you modify the AADDC Computers GPO settings. Does that meet the goal?

- A. Yes
- B. No

**Answer:** A

**NEW QUESTION 98**

- (Exam Topic 3)

You have a Windows Virtual Desktop host pool named Pool1 that runs Windows 10 Enterprise multi-session hosts.

You need to use Performance Monitor to troubleshoot a low frame quality issue that is affecting a current use session to Pool1.

What should you run to retrieve the user session ID?

- A. Get-ComputerInfo
- B. qwinsta
- C. whoami
- D. Get-LocalUser

**Answer:** B

**Explanation:**

Reference:

<https://docs.microsoft.com/en-us/azure/virtual-desktop/troubleshoot-vm-configuration>

**NEW QUESTION 99**

- (Exam Topic 3)

You deploy an Azure Virtual Desktop session host pool.

You need to provide a group of pilot users access to the virtual machines in the pool. What should you do?

- A. Create a role definition.
- B. Add the users to a Remote Desktop Users group on the virtual machines.
- C. Add the users to the local Administrators group on the virtual machines.
- D. Create a role assignment.

**Answer:** D

**Explanation:**

Reference:

<https://docs.microsoft.com/en-us/azure/virtual-desktop/delegated-access-virtual-desktop>

**NEW QUESTION 102**

- (Exam Topic 3)

You plan to deploy two Azure file shares named Share1 and Share2 that will be used with Azure Virtual Desktop. Share1 will contain at least 100 GB of data and must be stored on SSDs. Share2 must be able to switch between Transaction optimized and Cool storage tiers and must be stored on HDDs.

You need to recommend which type of storage accounts to use for the shares. The solution must minimize costs.

What should you recommend for each share? To answer, select the appropriate options in the answer area. NOTE: Each correct selection is worth one point.

## Answer Area

Share1:

Share2:

- A. Mastered
- B. Not Mastered

**Answer:** A

**Explanation:**

Graphical user interface, text, application, chat or text message Description automatically generated  
<https://learn.microsoft.com/en-us/azure/storage/files/storage-how-to-create-file-share?tabs=azure-portal>

### NEW QUESTION 106

- (Exam Topic 3)

You have a Windows Virtual Desktop host pool named Pool1 and an Azure Storage account named Storage1. Storage1 stores FSLogix profile containers in a share folder named share1.

You create a new group named Group1. You provide Group1 with permission to sign in to Pool1.

You need to ensure that the members of Group1 can store the FSLogix profile containers in share1. The solution must use the principle of least privilege.

Which two privileges should you assign to Group1? Each correct answer presents part of the solution. NOTE: Each correct selection is worth one point.

- A. the Storage Blob Data Contributor role for storage1
- B. the List folder / read data NTFS permissions for share1
- C. the Modify NTFS permissions for share1
- D. the Storage File Data SMB Share Reader role for storage1
- E. the Storage File Data SMB Share Elevated Contributor role for storage1
- F. the Storage File Data SMB Share Contributor role for storage1

**Answer:** CF

**Explanation:**

Reference:  
<https://docs.microsoft.com/en-us/azure/virtual-desktop/create-file-share>

### NEW QUESTION 109

- (Exam Topic 3)

You have an Azure Virtual Desktop host pool. The pool contains session hosts that run Windows 10 Enterprise multi-session.

You connect to a Remote Desktop session on Pool1 and discover an issue with the frequency of screen updates.

You need to identify whether the issue relates to insufficient server, network, or client resources. The solution must minimize how long it takes to identify the resource type.

What should you do?

- A. From within the current session, use the Azure Virtual Desktop Experience Estimator.
- B. From Azure Cloud Shell, run the Get-AzOperationalInsightsWorkspaceUsage cmdlet and specify the DefaultProfile parameter.
- C. From Azure Cloud Shell, run the Get-AzWvdUserSession cmdlet and specify the UserSessionId parameter.
- D. From within the current session, use Performance Monitor to display the values of all the RemoteFX Graphics(\*)\Frames Skipped/Second counters.

**Answer:** D

**Explanation:**

Reference:  
<https://docs.microsoft.com/en-us/azure/virtual-desktop/remotefx-graphics-performance-counters>

### NEW QUESTION 114

- (Exam Topic 3)

Note: This question is part of a series of questions that present the same scenario. Each question in the series contains a unique solution that might meet the stated goals. Some question sets might have more than one correct solution, while others might not have a correct solution.  
 After you answer a question in this section, you will NOT be able to return to it. As a result, these questions will not appear in the review screen.  
 You have a Windows Virtual Desktop host pool named Pool1 that is integrated with an Azure Active Directory Domain Services (Azure AD DS) managed domain. You need to configure idle session timeout settings for users that connect to the session hosts in Pool1. Solution: From an Azure AD DS-joined computer, you modify the AADDC Users GPO settings.  
 Does that meet the goal?

- A. Yes
- B. No

**Answer: B**

#### NEW QUESTION 119

- (Exam Topic 3)

You are automating the deployment of an Azure Virtual Desktop host pool.  
 You deploy the Azure Resource Manager (ARM) template shown in the following exhibit.

```

1 {
2   "$schema": "https://schema.management.azure.com/schemas/2015-01-01/
deploymentTemplate.json#",
3   "contentVersion": "1.0.0.0",
4   "parameters": {
5     "hostpools_HostPool2_name": {
6       "defaultValue": "HostPool2",
7       "type": "String"
8     }
9   },
10  "variables": {},
11  "resources": [
12    {
13      "type": "Microsoft.DesktopVirtualization/hostpools",
14      "apiVersion": "2020-11-02-preview",
15      "name": "[parameters('hostpools_HostPool2_name')]",
16      "location": "eastus",
17      "properties": {
18        "hostPoolType": "Personal",
19        "personalDesktopAssignmentType": "Automatic",
20        "maxSessionLimit": 999999,
21        "loadBalancerType": "Persistent",
22        "validationEnvironment": false,
23        "registrationInfo": {
24          "registrationTokenOperation": "None"
25        },
26        "preferredAppGroupType": "Desktop",
27        "startVMOnConnect": false
28      }
29    }
30  ]
31 }
```

Use the drop-down menus to select the answer choice that completes each statement based on the information presented in the Dockerfile.  
 NOTE: Each correct selection is worth one point.

Each session host in HostPool2 can contain

▼

1 session

15 sessions

99,999 sessions

Each time a user connects, the user will connect to

▼

a RemoteApp named Desktop

a permanently assigned virtual machine

a random virtual machine in the host pool

- A. Mastered
- B. Not Mastered

**Answer: A**

#### Explanation:

Graphical user interface, text, application Description automatically generated

Reference:

<https://docs.microsoft.com/en-us/azure/virtual-desktop/virtual-desktop-fall-2019/configure-host-pool-personal-d>



#### NEW QUESTION 122

- (Exam Topic 3)

You plan to deploy Azure Virtual Desktop.

You are deploying Storage Spaces Direct to a cluster that will store FSLogix profile containers. The cluster will NOT use Cloud witness.

What is the minimum number of virtual machines required for the cluster?

- A. 1
- B. 2
- C. 3
- D. 4

**Answer:** C

#### Explanation:

<https://learn.microsoft.com/en-us/azure/virtual-desktop/store-fslogix-profile>

#### NEW QUESTION 123

- (Exam Topic 3)

You have a Windows Virtual Desktop host pool that runs Windows 10 Enterprise multi-session. You need to configure automatic scaling of the host pool to meet the following requirements: Distribute new user sessions across all running session hosts.

Automatically start a new session host when concurrent user sessions exceed 30 users per host. What should you include in the solution?

- A. an Azure Automation account and the depth-first load balancing algorithm
- B. an Azure Automation account and the breadth-first load balancing algorithm
- C. an Azure load balancer and the breadth-first load balancing algorithm
- D. an Azure load balancer and the depth-first load balancing algorithm

**Answer:** A

#### Explanation:

Reference:

<https://docs.microsoft.com/en-us/azure/virtual-desktop/host-pool-load-balancing> <https://docs.microsoft.com/en-us/azure/virtual-desktop/configure-host-pool-load-balancing>

#### NEW QUESTION 126

- (Exam Topic 3)

Your network contains an on-premises Active Directory domain that syncs to an Azure Active Directory (Azure AD) tenant. The domain contains the domain controllers shown in the following table.

Name	Network location	IP address	Configuration
Server1	On-premises datacenter	10.10.1.1	Domain controller, DNS server
Server2	Azure virtual network named VNET1	10.20.1.1	Domain controller, DNS server

The DNS servers are configured to forward requests to an external DNS service.

You create a new virtual network named VNET2 that is peered to VNET1 and has gateway transit enabled. You plan to implement an Azure Virtual Desktop host pool in VNET2. The session hosts will be joined to the

Active Directory domain.

You need to configure DNS to meet the following requirements:

- Ensure that azure Virtual Desktop remains operational if a DNS server fails.
- Minimize administrative effort.

What should you configure?

- A. the DNS settings of VNET2 to use Server2 and Served
- B. the DNS settings of VNET2 to use the Azure DNS service
- C. the DNS settings of the virtual machines to use Server2 and Server1
- D. the DNS settings of the virtual machines to use the Azure DNS service

**Answer:** C

#### Explanation:

Reference:

<https://docs.microsoft.com/en-us/azure/virtual-network/virtual-networks-name-resolution-for-vms-and-role-insta>

#### NEW QUESTION 127

- (Exam Topic 3)

You have a Windows Virtual Desktop host pool named Pool1 and an Azure Automation account named account1. Pool1 is integrated with an Azure Active Directory Domain Services (Azure AD DS) managed domain named contoso.com.

You plan to configure scaling for Pool1 by using Azure Automation runbooks.

You need to authorize the runbooks to manage the scaling of Pool1. The solution must minimize administrative effort.

What should you configure?

- A. a managed identity in Azure Active Directory (Azure AD)
- B. a group Managed Service Account (gMSA) in Azure AD DS
- C. a Connections shared resource in Azure Automation
- D. a Run As account in Azure Automation

**Answer:** A

**Explanation:**

Reference:

<https://docs.microsoft.com/en-us/azure/virtual-desktop/set-up-scaling-script>

**NEW QUESTION 132**

- (Exam Topic 3)

You have an Azure Virtual Desktop deployment.

You plan to use FSLogix profile containers.

You need to recommend a solution that will be used to store the containers. The solution must meet the following requirements:

- \* The containers must be stored on solid-state drives (SSDs)
- \* Minimize administrative effort
- \* Minimize cost

What should you recommend?

- A. Azure NetApp Files
- B. Azure Files Standard
- C. Azure Blob Storage Premium
- D. Azure Files Premium

**Answer: D**

**Explanation:**

"Use Azure Files for FSLogix user profile data with Azure Virtual Desktop

Azure Files provides multiple tiers that you can select based on your cost and performance needs."

- <https://azure.microsoft.com/en-us/services/storage/files/#security>

"Premium file shares enable highly I/O-intensive workloads, with high throughput and low latency. Premium file shares are offered on high-performance solid-state drive (SSD) based storage."

- <https://azure.microsoft.com/en-us/pricing/details/storage/files/>

**NEW QUESTION 136**

- (Exam Topic 3)

You plan to deploy Windows Virtual Desktop. The deployment will use existing virtual machines. You create a Windows Virtual Desktop host pool.

You need to ensure that you can add the virtual machines to the host pool. What should you do first?

- A. Register the Microsoft.DesktopVirtualization provider.
- B. Generate a registration key.
- C. Run the Invoke-AzVMRunCommand cmdlet.
- D. Create a role assignment.

**Answer: A**

**Explanation:**

Reference:

<https://docs.microsoft.com/en-us/azure/virtual-desktop/create-host-pools-azure-marketplace>

**NEW QUESTION 141**

- (Exam Topic 3)

DRAG DROP

You have a Windows Virtual Desktop host pool named Pool1. Pool1 contains session hosts that use FSLogix profile containers hosted in Azure NetApp Files volumes.

You need to back up profile files by using snapshots.

Which three actions should you perform in sequence? To answer, move the appropriate actions from the list of actions to the answer area and arrange them in the correct order.

**Actions**

Create an Azure NetApp account.

Register the NetApp Resource Provider.

Register the Azure NetApp snapshot policy feature.

Create a snapshot policy.

Apply a snapshot policy to a volume.

**Answer Area**



- A. Mastered
- B. Not Mastered

**Answer: A**

**Explanation:**

Reference:

<https://docs.microsoft.com/en-us/azure/azure-netapp-files/azure-netapp-files-manage-snapshots>

**NEW QUESTION 142**

.....

## Thank You for Trying Our Product

### We offer two products:

1st - We have Practice Tests Software with Actual Exam Questions

2nd - Questons and Answers in PDF Format

### AZ-140 Practice Exam Features:

- \* AZ-140 Questions and Answers Updated Frequently
- \* AZ-140 Practice Questions Verified by Expert Senior Certified Staff
- \* AZ-140 Most Realistic Questions that Guarantee you a Pass on Your FirstTry
- \* AZ-140 Practice Test Questions in Multiple Choice Formats and Updatesfor 1 Year

**100% Actual & Verified — Instant Download, Please Click**  
**[Order The AZ-140 Practice Test Here](#)**