

Exam Questions PL-600

Microsoft Power Platform Solution Architect

<https://www.2passeasy.com/dumps/PL-600/>



NEW QUESTION 1

HOTSPOT - (Topic 1)

You need to ensure that the solution meets the data security and compliance requirements.
 What should you recommend? To answer, select the appropriate options in the answer area.
 NOTE: Each correct selection is worth one point.

Scenario

Relationship behavior

A worker transfers to a new client company.

	▼
Assign: Cascade All	
Assign: Cascade None	
Merge: Cascade All	
Rollup View: Cascade All	

A user deletes a worker's job placement history.

	▼
Delete: Cascade All	
Delete: Remove Link	
Delete: Restrict	

Answer:

Scenario

Relationship behavior

A worker transfers to a new client company.

	▼
Assign: Cascade All	
Assign: Cascade None	
Merge: Cascade All	
Rollup View: Cascade All	

A user deletes a worker's job placement history.

	▼
Delete: Cascade All	
Delete: Remove Link	
Delete: Restrict	

- A. Mastered
- B. Not Mastered

Answer: A

Explanation:

Box 1: Assign: Cascade None
Scenario: Worker still records must be archived after ten years and are then removed from the main system.
Assign: The referenced table record owner is changed. Cascade None: Do nothing.

NEW QUESTION 2

DRAG DROP - (Topic 1)

You need to recommend solutions to meet the organization's communication needs.
What should you recommend? To answer, drag the appropriate technologies to the correct groups of users. Each technology may be used once, more than once, or not at all. You may need to drag the split bar between panes or scroll to view content.
NOTE: Each correct selection is worth one point.

Technologies	Group of users	Technology
Microsoft Teams	First Up employees	
Power Apps portals	Workers	
Microsoft 365 Business Voice		

Answer:

Technologies	Group of users	Technology
Microsoft Teams	First Up employees	Microsoft Teams
Power Apps portals	Workers	Microsoft 365 Business Voice
Microsoft 365 Business Voice		

- A. Mastered
B. Not Mastered

Answer: A

Explanation:

Box 1: Microsoft Teams

First up employees must be able to contact each other by using a secure system to ask and answer questions about medical cases.

Microsoft Teams key capabilities:

? Connected

? Secure

? Managed

? Collaborative and productive Box 2: Microsoft 365 Business Voice

Workers must be able to communicate in near real-time with worker support agents.

Microsoft 365 Business Voice makes it easy for small and medium organizations to turn Microsoft Teams into a powerful and flexible telephone system. It's a replacement for

traditional telephony providers and in-house phone systems that can be difficult and costly to manage.

NEW QUESTION 3

HOTSPOT - (Topic 1)

You need to recommend solutions for the organization's technical challenges.

What should you recommend? To answer, select the appropriate options in the answer area.

NOTE: Each correct selection is worth one point.

Requirement	Solution
Provide workers a self-service option for viewing personal and skills information.	<div><div></div><div>Power Automate</div><div>QnA Maker</div><div>Azure Cognitive Services</div></div>
Authenticate workers who use the self-service option for updating skills information.	<div><div></div><div>Azure Active Directory B2B</div><div>Azure Active Directory B2C</div><div>Dynamics 365 owner team</div></div>
Plan routes for audit teams.	<div><div></div><div>Azure traffic routing</div><div>Address input component</div><div>Dynamics 365 Field Service</div></div>

- A. Mastered
B. Not Mastered

Answer: A

Explanation:

Box 1: Power Automate

Self-service purchase is available for Power Platform (Power BI, Power Apps, and Power Automate), Project, and Visio.

Box 2: Azure Active Directory B2B

Scenario: First Up Consulting recruits information technology (IT) workers for temporary or permanent positions at client companies.

Azure Active Directory (Azure AD) business-to-business (B2B) collaboration is a feature within External Identities that lets you invite guest users to collaborate with your organization. With B2B collaboration, you can securely share your company's applications and services with guest users from any other organization, while maintaining control over your own corporate data. Work safely and securely with external partners, large or small, even if they don't have Azure AD or an IT department. A simple invitation and redemption process lets partners use their own credentials to access your company's resources.

Note, Scenario:

? Workers must be able to sign into a portal by using their own email address.

Workers must be required to use a secure method of authentication to be able to view their data.

? User security roles must be customized to ensure that users are able to interact only with the specific data in which they need access. Box 3: Dynamics 365 Field Service

Dynamics 365 Field Service functionality include:

An interactive schedule board helps dispatchers assign work orders to the best resources based on location, availability, skill set, priority, and more. This is done via a manual drag- and-drop method, a semi-automated scheduling assistant, or fully automated with Resource Scheduling Optimization.

The schedule board displays each resource--whether an employee, contractor, or equipment--and their scheduled work orders. Resources and their assigned jobs are also displayed on a map along with routes and traffic patterns in real time.

NEW QUESTION 4

HOTSPOT - (Topic 1)

You need to design tables for the solution.

What should you recommend? To answer, select the appropriate options in the answer area.

NOTE: Each correct selection is worth one point.

Data type	Technical solution
Job placement record	<div><div></div><div>Custom table</div><div>Activity table</div><div>Virtual table</div></div>
Security clearance record	<div><div></div><div>Lookup (N:1)</div><div>Choice</div><div>Lookup (N:N)</div></div>

- A. Mastered
- B. Not Mastered

Answer: A

Explanation:

Box 1: Virtual Table

A virtual table is a custom table in Microsoft Dataverse that has columns containing data from an external data source. Virtual tables appear in your app to users as regular table rows, but contain data that is sourced from an external database, such as an Azure SQL Database. Rows based on virtual tables are available in all clients including custom clients developed using the Dataverse web services.

Scenario:

- ? First Up uses an on-premises system to manage current and historical patient data including medications and medical visits.
- ? The company plans to reference historical data in the existing system. The records held in these systems will not be migrated to the new solution except for medication information.
- ? The solution must provide a worker appointment booking system that can access worker historical job placement data.
- ? First Up staff members must be able to view and update worker records. They must be able to see current and historical job placement data on the same form in the new solution.

Box 2: Lookup (N:1)

Each worker can have many security clearances, so need a 1:N relationship.

Scenario: The solution must support tracking of security clearance information for a worker including the date, status, and certifying agency.

NEW QUESTION 5

- (Topic 1)

You need to recommend a solution for handling data entry requirements for the mobile audit teams.
What are two possible ways to achieve the goal? Each correct answer presents a complete solution.
NOTE: Each correct selection is worth one point.

- A. Mastered
- B. Not Mastered

Answer: A

Explanation:

Scenario:

Audit teams must have the ability to view worker information on their mobile devices. Audit teams must be able to record data during visits to locations where

workers are placed.
When you create an app, or someone shares an app with you, you can run that app on the Power Apps mobile app or in a web browser.
Reference:
<https://docs.microsoft.com/en-us/powerapps/user/run-app-browser>

NEW QUESTION 6

DRAG DROP - (Topic 1)
You need to recommend methods for assigning security to each group of users.
What should you recommend? To answer, drag the appropriate methods to the correct groups of users. Each method may be used once, more than once, or not at all. You may need to drag the split bar between panes or scroll to view content.
NOTE: Each correct selection is worth one point.

Methods

Dataverse Application User

Power Platform Local Business Owner Team

Azure Active Directory B2B Guest Access

Azure Active Directory Security Group Team

Answer Area

Group of users	Method
Full-time employees	Method
Automation	Method
Corporate governance auditing team	Method

- A. Mastered
- B. Not Mastered

Answer: A

Explanation:

Box 1: Power Platform Local Business Owner Team
Owner team: An owner team owns records and has security roles assigned to the team. A user's privileges can come from their individual security roles, those of the teams that they're part of or the ones they inherit. A team has full access rights on the records that the team owns. Team members are added manually to the owner team.
Scenario: Employee authentication with the existing system is provided by an on-premises Active Directory instance that is linked to Azure Active Directory.
Box 2: Azure Active Directory Security Group Team
An Azure Active Directory (Azure AD) group team. Similar to owner team, an Azure AD group team can own records and can have security roles assigned to the team.
Note: The administration of app and data access for Microsoft Dataverse has been extended to allow administrators to use their organization's Azure Active Directory (Azure AD) groups to manage access rights for licensed Dataverse users.
Box 3: Azure Active Directory B2B Guest Access
An Azure AD B2B collaboration user is an external user, typically from a partner organization, that you invite to sign into your Azure AD organization using their own credentials. This B2B collaboration user (also generally referred to as a guest user) can then access the apps and resources you want to share with them. A user object is created for the B2B collaboration user in the same directory as your employees. B2B collaboration user objects have limited privileges in your directory by default, and they can be managed like employees, added to groups, and so on.

Scenario: Before First Up signs a contract to place workers at a client company, a member of the audit team visits the company and interviews company management. Audit members use different types of devices including Android and iOS devices. First Up has no plans to require the use of a single type of device.

NEW QUESTION 7

- (Topic 2)
You need to provide the IT team and managers with a mobile solution. How many apps should you recommend?
A.

one app for each job role

- B. one app for each user
- C. one app for all employees of the team
- D. one app for each team of employees

Answer: A

Explanation:

Scenario: IT staff needs a mobile solution to see IT cases at the top of the menu since this is their primary focus. Managers need to see all customer dashboards at the top of their menu on their mobile device.

NEW QUESTION 8

- (Topic 2)

You need to recommend an authentication solution for the planned implementation of Dynamics 365. What should you include in the recommendation?

- A. Use synchronized identities.
- B. Use the Office 365 tenant for Dynamics 365 Customer Service.
- C. Create a new tenant for Dynamics 365 Customer Service.
- D. Use federated identities

Answer: A

Explanation:

Scenario: Ensure that employees can sign in to all Microsoft apps by using one set of credentials per employee.

Synchronized identity. Synchronize on-premises directory objects with Microsoft 365 and manage your users on-premises. You can also synchronize passwords so that the users have the same password on-premises and in the cloud, but they will have to sign in again to use Microsoft 365.

Reference:

<https://docs.microsoft.com/en-us/power-platform/admin/manage-user-account-synchronization>

NEW QUESTION 9

- (Topic 2)

You need to recommend the field type to use for configuring meal selections during reservation. Which field type should you recommend?

- A. Mastered
- B. Not Mastered

Answer: A

Explanation:

Scenario:

? Customers can select a meal when they make a reservation and can save the meal choices as a customer preference.

? The company offers two types of meals: standard and vegetarian. Meal types can be temporarily unavailable. The airline is considering offering other meal types, such as gluten-free and low-sodium options.

In PowerApps Option set is one of the field types you can use in your Entity. The information type that Option Set stores is a list of text values. And here comes the Option Set advantage – once you define its text values you can centrally managed it.

Example:

Country Name
Poland
USA
England
India

Reference:

<https://michalguzowski.pl/how-to-work-with-option-set-in-powerapps/>

NEW QUESTION 10

- (Topic 2)

You need to select an appropriate app for Relecloud. Which app should you recommend?

- A. Dynamics 365 Field Service
- B. Dynamics 365 Sales
- C. Dynamics 365 Project Operations
- D. Dynamics 365 Customer Service

Answer: D

Explanation:

Microsoft Dynamics 365 Customer Service is a module for customer service automation that streamlines case and knowledge management, enables personalized customer service with a 360-degree customer view, and provides visibility into customer service department performance with dashboards and reports.

Reference:

<https://docs.microsoft.com/en-us/dynamics365/customer-service/overview>

NEW QUESTION 10

- (Topic 2)

You need to recommend a solution for agents when working with customers to make reservations.

What should you recommend?

- A. task flows
- B. Business Process Flows
- C. workflows
- D. Power Automate

Answer: B

Explanation:

Business process flows provide a guide for people to get work done. They provide a streamlined user experience that leads people through the processes their organization has defined for interactions that need to be advanced to a conclusion of some kind.

Use business process flows to define a set of steps for people to follow to take them to a desired outcome.

With business processes flows available as an entity, you can now use advanced finds, views, charts, and dashboards sourced from business process flow data for a given entity, such as a lead or opportunity.

Scenario:

- ? Agents need a solution to replace paper reservation checklists.
- ? Agents need dashboards to show a current count of all reservations on the entity.
- ? Agents need a way to track reservation issues.
- ? Agents need a visual indicator in the interface to determine the reservation step to provide a seamless customer experience.

NEW QUESTION 15

- (Topic 3)
You need to recommend a method for transferring machine information to Dynamics 365 Field Service.
What should you recommend?

- A. Microsoft Dataverse connector
- B. Dual-write
- C. Lifecycle Services

Answer: A

Explanation:

Scenario: Information about each machine produced must be transferred to Dynamics 365 Field Service.
Use the Microsoft Dataverse connector when connecting to the Microsoft Dataverse used for Microsoft Dynamics 365 Sales, Microsoft Dynamics 365 Customer Service, Microsoft Dynamics 365 Field Service, Microsoft Dynamics 365 Marketing, and Microsoft Dynamics 365 Project Service Automation.
Reference:
<https://docs.microsoft.com/en-us/powerapps/maker/canvas-apps/connections/connection-dynamics-crmonline>

NEW QUESTION 19

HOTSPOT - (Topic 3)
You need to design the quality inspection order data model.
What should you recommend? To answer, select the appropriate options in the answer area.
NOTE: Each correct selection is worth one point.

Requirement	Action
Obtain the serial number and other machine attributes for use in the inspection order.	<div><div></div><div>Use a virtual table. Import to a custom table. Create a lookup to Dynamics 365 Field Service.</div></div>
Configure the relationship between inspection orders and inspection ratings.	<div><div></div><div>Create a one-to-many relationship and set the behavior to Parental. Create a many-to-many relationship and set the behavior to Parental. Create a one-to-many relationship and set the behavior to Cascade None. Create a many-to-many relationship and set the behavior to Cascade None.</div></div>

- A. Mastered
- B. Not Mastered

Answer: A

Explanation:

Box 1: Create a lookup to Dynamics 365 Field Service
Scenario: Machines are assigned serial numbers and placed in stock until they are shipped to customers.
Entity lookup: Allows technicians to choose a Dynamics 365 record. In the inspection designer interface, admins must select an entity and a field to display. For a

chosen entity, the Name field and mandatory fields are the entity attributes that can be displayed in the lookup.

Box 2: Create a one-to-many relationship and set the behavior to Parental Scenario: Inspection orders must:

? Allow entry of quality ratings of passed or failed for each quality metric identified

for the machine being rated.

? Be automatically marked as failed if one inspection step rating is marked as failed.

Each inspection order can have one or many inspection steps, and each inspection step has a rating.

Note: Each pair of tables that are eligible to have a 1:N relationship can have multiple 1:N relationships between them. Yet usually only one of those relationships can be considered a parental table relationship.

NEW QUESTION 23

HOTSPOT - (Topic 3)

You need to recommend solutions to meet the inspection requirements.

What should you recommend? To answer, select the appropriate options in the answer area.

NOTE: Each correct selection is worth one point.

Requirement

Solution

View, assign, and resolve inspection bottlenecks.

	▼
Booking rules	
Schedule board	
Proficiency models	

Automatically input measurement readings from inspection gauges

	▼
Custom connector	
Azure IoT Hub connector	
Azure IoT Central connector	
Microsoft Dataverse connector	

Answer:

Requirement

Solution

View, assign, and resolve inspection bottlenecks.

	▼
Booking rules	
Schedule board	
Proficiency models	

Automatically input measurement readings from inspection gauges

	▼
Custom connector	
Azure IoT Hub connector	
Azure IoT Central connector	
Microsoft Dataverse connector	

A. Mastered

B. Not Mastered

Answer: A

Explanation:

Box 1: Schedule board

The Dynamics 365 Field Service schedule board provides an overview of resource availability and bookings you can make.

Box 2: Azure IoT Central connector

Information about each machine produced must be transferred to Dynamics 365 Field Service.

The difference between IoT hub and IoT central is that IoT is an application platform that simplifies the creation of Internet of Things solutions. IoT central helps to reduce the challenges of implementing IoT development, operations, and management. IoT Central is a fully managed Software as a Service solution.

Note: There are three ways you can use to connect IoT-enabled devices into the Field Service solution:

? Connected Field Service for Azure IoT Central

? Connected Field Service for Azure IoT Hub

? Connected Field Service for non-Azure IoT providers using the extensible IoT provider framework

NEW QUESTION 25

HOTSPOT - (Topic 3)

You need to recommend a solution to meet user interface requirements.

What should you recommend? To answer, select the appropriate options in the answer area.

NOTE: Each correct selection is worth one point.

Requirement

Solution

Visual representation of gauge readings with minimum and maximum tolerances.

Create and embed a Power BI radial gauge.
Create and embed a custom visualization component.
Create and embed a standard Power Apps donut chart.

Add visibility to the manufacturing inspection records for onsite technicians.

Configure mobile offline synchronization.
Add an inspection order to the work order form
Modify the sitemap for Dynamics 365 Field Service.

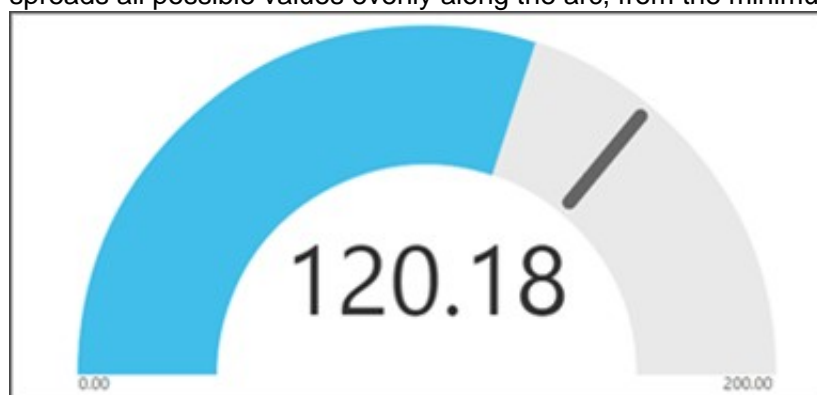
- A. Mastered
B. Not Mastered

Answer: A

Explanation:

Box 1: Create and embed a Power Bi radial gauge

A radial gauge chart has a circular arc and shows a single value that measures progress toward a goal or a Key Performance Indicator (KPI). The line (or needle) represents the goal or target value. The shading represents the progress toward that goal. The value inside the arc represents the progress value. Power BI spreads all possible values evenly along the arc, from the minimum (left-most value) to the maximum (right-most value).



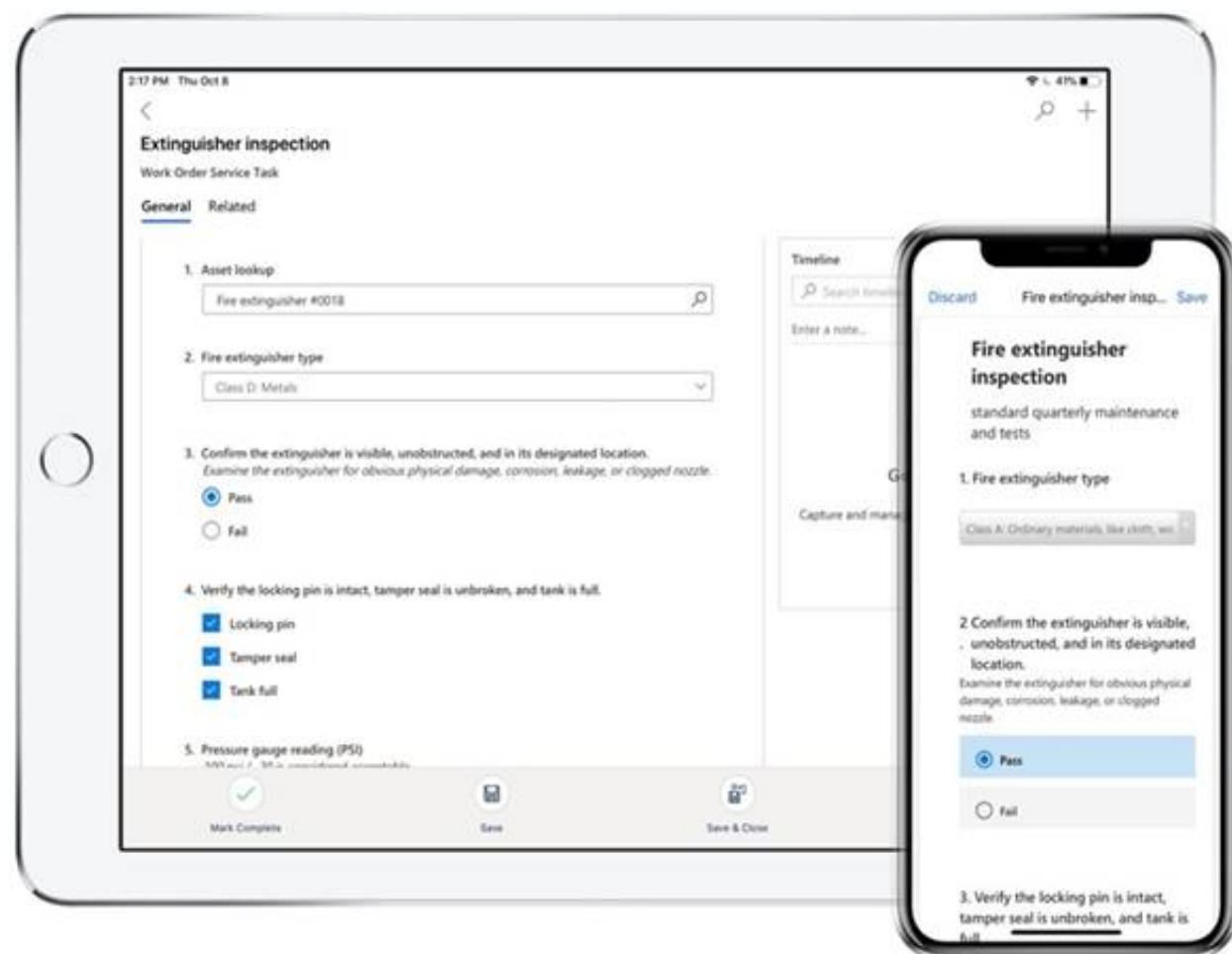
In this example, you're a car retailer tracking the sales team's average sales per month. The needle represents a 140 cars sales goal. The minimum possible average sales is 0 and the maximum is 200. The blue shading shows that the team is averaging approximately 120 sales this month.

Box 2: Add an inspection order to the work order form

You can add inspections to work orders in Dynamics 365 Field Service.

Field Service inspections are digital forms that technicians use to quickly and easily answer a list of questions as part of a work order. The list of questions can include safety protocols, pass-and-fail tests for a customer asset, an interview with a customer, or other audits and assessments performed before, during, or after a work order.

Example:



NEW QUESTION 28

HOTSPOT - (Topic 3)

You need to recommend components to meet the re-inspection requirements.

Which components should you recommend? To answer, select the appropriate options in the answer area.

NOTE: Each correct selection is worth one point.

Requirement

Component

Initiate the creation of re-inspection orders.

	▼
Dataflow	
Business rule	
Power Automate flow	

Automatically set overall inspection ratings based on the checklist ratings.

	▼
From event	
Business rule	
Custom action	
Rollup data type	

- A. Mastered
- B. Not Mastered

Answer: A

Explanation:

Box 1: Power Automate flow

Scenario: Inspection orders must be automatically marked for re-inspection should a machine fail inspection. The new inspection order must be created by using the originating inspection order as a template.

Box 2: Business rule

? By combining conditions and actions, you can do any of the following with business rules:

- ? Set column values
- ? Clear column values
- ? Set column requirement levels
- ? Show or hide columns
- ? Enable or disable columns
- ? Validate data and show error messages
- ? Create business recommendations based on business intelligence.

NEW QUESTION 32

- (Topic 3)

You need to manage user access to the app.

Which two connection types should you recommend? Each correct answer presents part of the solution.

NOTE: Each correct selection is worth one point.

- A. Virtual table with a customer connector
- B. Microsoft Dataverse connector
- C. Office 365 Outlook connector
- D. Office 365 Users connector

Answer: CD

Explanation:

Office 365 Users lets you access user profiles in your organization using your Office 365 account. You can use the Use the connection in your Power Platform app. Dataverse is part of the Microsoft 365 collaboration and productivity tools. Using federation, applications can connect to Dataverse using the same system user identities and credentials available in an Azure Active Directory based network.

Scenario:

? Users must be active employees of Fabrikam.

? Quality inspection app: Fabrikam is evaluating Microsoft Power Platform to determine whether it can meet the company's requirements for a manufacturing defect and quality inspection solution. Each machine produced must be subjected to a quality inspection at various points during production. Each machine must undergo a more extensive quality inspection before the machine can be shipped to the customer.

Reference:

<https://docs.microsoft.com/en-us/powerapps/maker/canvas-apps/connections/connection-office365-users>

NEW QUESTION 37

HOTSPOT - (Topic 3)

You need to recommend the appropriate components to meet the inspection requirements.

What should you recommend? To answer, select the appropriate options in the answer area.

NOTE: Each correct selection is worth one point.

Requirement	Solution
Prevent editing of finalized inspection orders.	<div>▼</div> <div>Business rule</div> <div>Security role</div> <div>User permission</div>
Prepare documentation for failed inspection steps.	<div>▼</div> <div>Data flow</div> <div>Business rule</div> <div>Form property</div>

- A. Mastered
B. Not Mastered

Answer: A

Explanation:

Box 1: Security role

Microsoft Dataverse uses a role-based security model to help secure access to the database.

Scenario:

? You must prevent users from changing inspection order data once an inspection is marked as final.

? Supervisors must be able to modify standard checklists. Other employees must be prevented from modifying checklists.

Box 2: Data flow

Dataflows are a self-service, cloud-based, data preparation technology. Dataflows enable customers to ingest, transform, and load data into Microsoft Dataverse environments, Power BI workspaces, or your organization's Azure Data Lake Storage account.

Scenario: Provide a visual representation of the testing measurement limits for each step. Include an indication of how the measured value compares to measurement limits and whether the measurement is within tolerance. Users must be able to configure the visualizations to display the minimum value and maximum value, and whether the reading is within the tolerance of a single targeted value. It must also be able to be used for maintenance inspections once the machine has been installed.

NEW QUESTION 40

- (Topic 3)

You need to recommend an environment for the inspection solution. Where should you recommend installing the solution?

- A. within the Dynamics 365 Field Service environment
B. in a separate Microsoft Dataverse environment in the same instance as the Dynamics 365 Field Service environment
C. in a separate Dataverse environment with Dynamics 365 apps enabled
D. within the default Dynamics 365 Field Service environment

Answer: A

NEW QUESTION 42

HOTSPOT - (Topic 4)

A company uses Dynamics 365 Sales and Power BI.

Sales managers must be able to keep track of changes to their pipeline in the following ways:

? Notify the sales managers when an Opportunity changes sales stage.

? Notify the sales managers when the pipeline drops below 2.5M USD.

? When reviewing the pipeline in Power BI, a sales executive must be able to add a Playbook to an Opportunity.

You need to recommend a solution that meets the company requirements.

Which combination of solutions should you recommend? To answer, select the appropriate option in the answer area.

NOTE: Each correct selection is worth one point.

Notify the sales manager when an Opportunity changes sales stage.	<div>▼</div> <div>Microsoft Power Automate, Microsoft Dataverse connector, and Microsoft Office 365 Outlook connector</div> <div>Microsoft Power Automate, Microsoft Dataverse connector, and Microsoft Office 365 users</div> <div>Microsoft Power Automate, data alerts, and Microsoft Office 365 connector</div>
Notify the sales managers when the pipeline drops below 2.5 USD.	<div>▼</div> <div>Microsoft Power Automate, Microsoft Dataverse connector, and Microsoft Office 365 Outlook connector</div> <div>Microsoft Power Automate, Power BI data alerts, and Microsoft Office 365 connector</div> <div>Microsoft Power Automate, Power BI, Power Apps, and Microsoft Dataverse connector</div>
When reviewing the pipeline in Power BI, a sales executive must be able to add a Playbook to an Opportunity.	<div>▼</div> <div>Power BI, Power Apps, Microsoft Dataverse connector, and Microsoft Office 365 Outlook connector</div> <div>Microsoft Power Automate, Data alerts, Microsoft Dataverse connector, and Microsoft Office 365 users</div> <div>Microsoft Power Automate, Data alerts, and Microsoft Office 365 connector</div> <div>Microsoft Power Automate, Power BI, Power Apps, and Microsoft Dataverse connector</div>

- A. Mastered
B. Not Mastered

Answer: A

Explanation:

Box 1: Microsoft Power Automate, Microsoft Dataverse connector, and Microsoft 365 Outlook connector

Use Microsoft Dataverse as the data source.

While Power Automate is a robust tool with ever-expanding capabilities, it also handles simple tasks with grace. A universal business need for many organizations is the ability to automate email notifications based on certain criteria: an opportunity is won, send an email to the sales manager; a case is closed, send an email to the customer; a work order is completed, send an email to the customer.

Power Automate can easily accommodate this using the Microsoft 365 Outlook connector.

Box 2: Microsoft Power Automate, Power BI data alerts, and Microsoft 365 connector Data alerts in the Power BI service: Set alerts to notify you when data in your dashboards changes beyond limits you set.

Box 3: Microsoft Power Automate, Power BI, Power Apps, and Microsoft Dataverse connector

NEW QUESTION 47

- (Topic 4)

You are a Power Apps architect for a company. The IT administrator designs a Power Apps app that is ready to be tested. The company uses application lifecycle management (ALM).

Each version and solution component must be tracked as it is tested.

You need to recommend a strategy to deploy solutions for the user acceptance testing environment.

What should you recommend?

- A. Use Package Deployer and deploy a managed solution.
- B. Use Package Deployer and deploy an unmanaged solution.
- C. Use Solution Packager and deploy a managed solution.
- D. Use Solution Packager and deploy an unmanaged solution.

Answer: D

Explanation:

Solution Packager is a tool that can unpack a compressed solution file into multiple XML files and other files, so they can be easily managed by a source control system.

Unmanaged solution: An open solution with no restrictions on what can be added, removed, or modified. This is recommended during development of a solution.

C: Managed solution

A completed solution ready to be imported into an organization. Once imported, components can't be added or removed, although they can optionally allow further customization. This is recommended when development of the solution is complete.

Reference:

<https://docs.microsoft.com/en-us/power-platform/alm/solution-packager-tool>

NEW QUESTION 52

- (Topic 4)

A company wants to create a Power Automate flow that posts marketing events to social media.

The company must ensure that the postings adhere to regulatory requirements for handling of personally identifiable information (PII) data. The company will not post events to unauthorized social media platforms.

You need to ensure that the requirement is met.

Which two actions should you perform? Each correct answer presents part of the solution.

NOTE: Each correct selection is worth one point.

- A. Configure the relevant connector so that is part of the Non-Business data group category.
- B. Create a security role to prevent data export.
- C. Configure an Azure Active Directory (AAD) security role for the maker to the environment.
- D. Create a Data Loss Protection (DLP) policy.
- E. Configure the relevant connector so that it is part of the Blocked data group category.

Answer: DE

Explanation:

DLP policies enforce rules for which connectors can be used together by classifying connectors as either Business or Non-Business. If you put a connector in the Business group, it can only be used with other connectors from that group in any given app or flow. Sometimes you might want to block the usage of certain connectors altogether by classifying them as Blocked.

Reference:

<https://docs.microsoft.com/en-us/power-platform/admin/wp-data-loss-prevention>

NEW QUESTION 57

HOTSPOT - (Topic 4)

A company reports the following issues with an existing data management system.

? Users cannot search for specific records by using a user-friendly ID or record identifier.

? Users occasionally enter data into fields that is not required.

? The record form displays all fields. Many of the fields are not used.

You need to ensure that the Power Platform solution will ensure data quality can be properly maintained.

Which component should you use? To answer, select the appropriate options in the answer area.

NOTE: Each correct selection is worth one point.

Requirement

Solution

Ensure that users can search for specific records by using a unique identifier.

▼

Business rule

Autonumber column

Business process flow

Duplicate detection rule

You must prevent data entry into columns that do not require entry.

▼

Business rule

Real time workflow

Business process flow

Duplicate detection rule

Answer:

Requirement

Solution

Ensure that users can search for specific records by using a unique identifier.

▼

Business rule

Autonumber column

Business process flow

Duplicate detection rule

You must prevent data entry into columns that do not require entry.

▼

Business rule

Real time workflow

Business process flow

Duplicate detection rule

- A. Mastered
- B. Not Mastered

Answer: A

Explanation:

Box 1: Autonumber column

Autonumber columns are columns that automatically generate alphanumeric strings whenever they are created.

Box 2: Business rule

By combining conditions and actions, you can do any of the following with business rules:

- ? Enable or disable columns
- ? Set column values
- ? Clear column values
- ? Set column requirement levels
- ? Show or hide columns
- ? Validate data and show error messages
- ? Create business recommendations based on business intelligence.

NEW QUESTION 58

- (Topic 4)

You are designing a Power Platform solution for a company. The company issues each employee a tablet device.

The company wants to simplify the opportunity management processes and automate when possible. The company identifies the following requirements:

- ? Users must have a visual guide to know which data to enter in each step of the opportunity management process.
- ? The system must automatically assign the opportunity to a manager for approval once all data is entered.
- ? The system must notify an assignee each time an opportunity is assigned to them by using push notifications.
- ? When a user selects a push notification, the associated opportunity must display.

You need to recommend the Power Platform components that will meet their requirements.

Which three Power Platform components should you recommend? Each correct answer presents part of the solution.

NOTE: Each correct selection is worth one point.

- A. Business process flows
- B. Power Apps mobile apps
- C. Power Virtual Agents chatbots
- D. Power Automate desktop flows
- E. Power Automate cloud flows

Answer: ABE

Explanation:

A: Use business process flows to define a set of steps for people to follow to take them to a desired outcome. These steps provide a visual indicator that tells people where they are in the business process.
B: Push notifications are used in Power Apps mobile to engage app users and help them prioritize key tasks. In Power Apps, you can create notifications for Power Apps mobile by using the Power Apps Notification connector. You can send notifications to any app that you create in Power Apps.
E: Create a cloud flow when you want your automation to be triggered either automatically, instantly, or via a schedule.
_ Automated flows: Create an automation that is triggered by an event such as arrival of an email from a specific person, or a mention of your company in social media.
Reference:
<https://docs.microsoft.com/en-us/power-automate/business-process-flows-overview> <https://docs.microsoft.com/en-us/powerapps/mobile/power-apps-mobile-notification>

NEW QUESTION 59

- (Topic 4)
An organization plans to implement a solution to deliver the complete sales process for its sales teams. The organization does NOT have any physical barcode scanners.
To meet the organization business requirements, the proposed solution must include the following capabilities:
? Create and qualify leads to contacts
? Generate quotes and convert quotes to orders
? Scan product barcodes as part of the order generation process
You need to recommend a solution to help the organization achieve its business requirements.
What should you recommend?

A. Dynamics 365 mobile app and a Power Apps canvas app
B. Dynamics 365 for Phones only
C. Dynamics 365 Customer Service and Dynamics 365 Sales
D. Unified Service Desk

Answer: A

Explanation:

There is barcode scanner control in Power Apps. The control opens a native scanner on an Android or iOS device. The scanner automatically detects a barcode, a QR code, or a data- matrix code when in view.
Use the Dynamics 365 for phones or Dynamics 365 for tablets app to run customer engagement apps (such as Dynamics 365 Sales, Dynamics 365 Customer Service, and Dynamics 365 Marketing), built on Microsoft Dataverse on your mobile device.
Reference:
<https://docs.microsoft.com/en-us/dynamics365/field-service/mobile-power-app-system- barcode-scanning>
<https://docs.microsoft.com/en-us/dynamics365/mobile-app/overview>

NEW QUESTION 61

HOTSPOT - (Topic 4)
A company uses Power Pages for article submissions. The article properties are stored in a table in Microsoft Dataverse and the content of the article is stored in a related Microsoft SharePoint library. The company invites different experts outside its organization to review an article before publishing it. The reviewers are granted access to the articles in Microsoft Dataverse. The company has the following requirements:
• Provide a app to canvas the reviewers that exposes both the article properties and content in read-only mode.
• Once the review is completed, the reviewer saves the review data, and the article and the review no longer appear in the app.
You need to recommend the components to be used for each requirement. Which options should you use?
NOTE: Each correct selection is worth one point.

Requirement	Option
Security configuration for reviewers	<div>Create a dedicated access team and add the reviewers to the team. Create a dedicated access team and add the reviewers to the team. Create a dedicated access team template and add it to the article record. Create a dedicated owner team in the Microsoft Dataverse environment and add the reviewers to the team. Create a dedicated Microsoft Teams channel with a security role for the article and add the reviewers as members.</div>
Access to the app	<div>Embed app in Power Pages portal. Embed app in Power Pages portal. Share app through the Power Apps maker portal. Register app in Azure AD and email the registration link. Publish the app in Power Apps Studio and email the link to the app.</div>

A. Mastered
B. Not Mastered

Answer: A

Explanation:

Requirement	Option
Security configuration for reviewers	<div>Create a dedicated access team and add the reviewers to the team. Create a dedicated access team and add the reviewers to the team. Create a dedicated access team template and add it to the article record. Create a dedicated owner team in the Microsoft Dataverse environment and add the reviewers to the team. Create a dedicated Microsoft Teams channel with a security role for the article and add the reviewers as members.</div>
Access to the app	<div>Embed app in Power Pages portal. Embed app in Power Pages portal. Share app through the Power Apps maker portal. Register app in Azure AD and email the registration link. Publish the app in Power Apps Studio and email the link to the app.</div>

NEW QUESTION 66

HOTSPOT - (Topic 4)

You design a Power Platform solution for a customer. The solution uses Microsoft Dataverse as the data store. You are managing the go-live process for the solution.

The customer reports the following performance issues:

- ? Form load time is much slower than it was during testing.
- ? Overall system performance has been significantly slower that it was during testing.

You need to recommend how to troubleshoot system performance.

Which actions should you recommend? To answer, select the appropriate options in the answer area.

NOTE: Each correct selection is worth one point.

Performance issue	Action
Slow form load times	<div>Review workflows associated with the form events.</div> <div>Review QuickFind properties for the fields on the form.</div> <div>Review the fields that are on the form.</div>
Overall slow system performance	<div>Change all security roles from global read permissions to business unit permissions.</div> <div>Review one to many relationships to verify whether cascade settings are necessary.</div> <div>Change security roles from global read access to business unit to provide better performance.</div>

- A. Mastered
- B. Not Mastered

Answer: A

Explanation:

Box 1: Review the fields that are on the form

Keep the number of table columns (fields) to a minimum.

The more table columns (formerly referred to as fields) you have in a form, the more data that needs to be downloaded to view each record.

Box 2: Review one to many relationships to verify whether cascade settings are necessary.

NEW QUESTION 67

DRAG DROP - (Topic 4)

You are designing a data model for a Microsoft Power Platform solution. The data model must meet the following requirements:

- When an account is assigned to a new salesperson, all opportunities that ate associated with the account must be assigned to the new salesperson.
- When a salesperson assigns a lead to another salesperson, all phone call activities related to the lead must be assigned to the new salesperson.

You need to recommend cascading strategies for the data model.

Which cascading strategy should you recommend? To answer, drag the appropriate cascading strategies to the correct requirements. Each cascading strategy may be used once, more than once, or not at all. You may need to drag the split bar between panes or scroll to view content

NOTE: Each correct selection is worthone point.

Cascading strategies	Requirement	Cascading strategy
<div>Cascade All</div> <div>Cascade Active</div> <div>Cascade User Owned</div> <div>Cascade None</div>	<div>When an account is assigned to a new salesperson, all opportunities that are associated with the account must be assigned to the new salesperson.</div> <div>When a salesperson assigns a lead to another salesperson, all phone call activities related to the lead must be assigned to the new salesperson.</div>	<div></div> <div></div>

- A. Mastered
- B. Not Mastered

Answer: A

Explanation:

Cascading strategies	Requirement	Cascading strategy
<div>Cascade All</div> <div>Cascade Active</div> <div>Cascade User Owned</div> <div>Cascade None</div>	<div>When an account is assigned to a new salesperson, all opportunities that are associated with the account must be assigned to the new salesperson.</div> <div>When a salesperson assigns a lead to another salesperson, all phone call activities related to the lead must be assigned to the new salesperson.</div>	<div>Cascade All</div> <div>Cascade User Owned</div>

NEW QUESTION 69

- (Topic 4)

A company provides professional development certifications to technologies around the world. The company uses multiple call centers to support customers. The company plans to implement Dynamics 365 Customer Service.

The company must increase productivity for call center employees. The solution must meet the following requirements:

- ? Handle multiple customer interactions at once
- ? Ensure that users can access information from several business applications.

? Interact with customers by using the following channels: chat, phone calls, emails, and online reviews.
? Implement all functionality in a single interface.
You need to recommend a solution that meets the requirements of the company. What should you recommend?

- A. Omnichannel for Customer Service
- B. Live Assist for Microsoft Dynamics 365 Powered by CafeX
- C. LinkedIn connector
- D. Unified Service Desk

Answer: A

Explanation:

Omnichannel for Customer Service is a robust application that extends the power of Dynamics 365 Customer Service to enable organizations to instantly connect and engage with their customers via channels like Live Chat and SMS.
Omnichannel for Customer Service also provides a modern, customizable, high- productivity app that allows agents to engage with customers across different channels. The application offers contextual customer identification, real-time notification, integrated communication, and agent productivity tools like KB integration, search, and case creation
to ensure agents are effective.

Reference:
<https://docs.microsoft.com/en-us/dynamics365/customer-service/introduction-omnichannel>

NEW QUESTION 71

- (Topic 4)

Note: This question is part of a series of questions that present the same scenario. Each question in the series contains a unique solution that might meet the stated goals. Some question sets might have more than one correct solution, while others might not have a correct solution.

After you answer a question in this section, you will NOT be able to return to it. As a result, these questions will not appear in the review screen.

A company plans to automate the expense approval process.

Users currently enter data into an on-premises SQL Server database. You need to allow users to submit expenses from mobile devices.

Solution: Create a canvas app for expense data entry. Create a custom connector. Create a cloud flow for approval and use the custom connector to add data to the SQL Server database.

Does the solution meet the goal?

- A. Yes
- B. No

Answer: B

Explanation:

NEW QUESTION 75

- (Topic 4)

You are a Microsoft Power Platform solution architect working on a project. API calls are being sent between external applications and a Microsoft Power Platform solution.

The number of requests per user within a given time frame varies. Some users may be exceeding the service protection API limits.

You need to ensure that the API conforms to service protection limits.

Which three metrics should you review? Each correct answer presents part of the solution.

NOTE: Each correct selection is worth one point.

- A. The number of requests that a user can make each day.
- B. The total number of requests that can be processed each day.
- C. The number of concurrent requests that a user can make.
- D. The total execution time for requests by all users.
- E. The combined execution time required to process requests from a user.

Answer: ACE

Explanation:

Three types of service protection API limit errors that can be returned:

? Number of requests This limit counts the total number of requests during the preceding 300 second period.

? Execution time This limit tracks the combined execution time of incoming requests during the preceding 300 second period.

? Concurrent requests This limit tracks the number of concurrent requests. Reference:

<https://docs.microsoft.com/en-us/powerapps/developer/data-platform/api-limits>

NEW QUESTION 80

- (Topic 4)

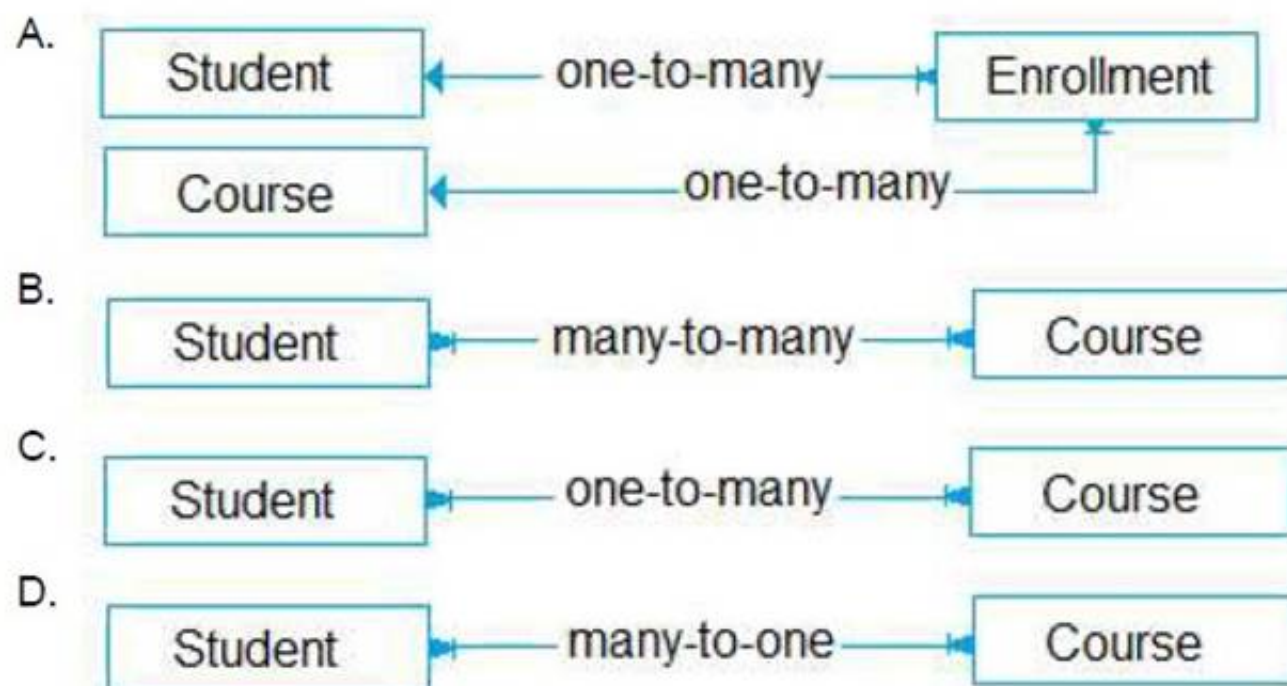
You are designing the data model for a school. The school wants to track students' enrollments in courses.

The system must meet the following requirements: Track the courses in which each student is enrolled. Track the students that are enrolled in each course.

Track dates when each student enrolled in each course and the person who approved the enrollment.

Allow users to create a report that details which students are enrolled in which courses. You need to recommend a data model that will fit the school's requirements.

Which logical model should you recommend?



A. Option A

B. Option B

Option C

C. Option D

Answer: A

Explanation:

Need a relationship table.

N:N (Many-to-Many): A table relationship that depends on a special Relationship table, sometimes called an Intersect table, so that many rows of one table can be related to many rows of another table.

When viewing rows of either table in a N:N relationship you can see a list of any rows of the other table that are related to it. Reference:

<https://docs.microsoft.com/en-us/powerapps/maker/data-platform/create-edit-entity-relationships>

NEW QUESTION 85

DRAG DROP - (Topic 4)

You need to recommend methods for assigning security to each group of users. The customer provides the following requirements:

? Customers need the ability to submit a case through an online portal.

? Portal must handle 75 concurrent users submitting cases.

? Service data must be retained for at least six years.

You need to determine which requirements are functional or non-functional.

Which requirements are functional or non-functional? To answer, drag the appropriate types to the correct requirements. Each type may be used once, more than once, or not at all. You may need to drag the split bar between panes or scroll to view content.

NOTE: Each correct selection is worth one point.

Types	Requirement	Type
Functional	Customers need the ability to submit a case through an online portal.	
Non-functional	Portal must handle 75 current users submitting cases.	
	Service data must be retained for at least six years.	

Answer:

Types	Requirement	Type
Functional	Customers need the ability to submit a case through an online portal.	Functional
Non-functional	Portal must handle 75 current users submitting cases.	Non-functional
	Service data must be retained for at least six years.	Non-functional

- A. Mastered
- B. Not Mastered

Answer: A

Explanation:

Box 1: Functional

Functional requirements describe what the solution needs to do or its behaviors.

Box 2: Non-functional

Non-functional requirements commonly describe non-behavior aspects of the solution such as performance requirements.

Box 3: Non-functional

Examples of common non-functional requirement types include:

- ? Availability
- ? Compliance/regulatory
- ? Data retention/residency
- ? Performance (response time, and so on)
- ? Privacy
- ? Recovery time
- ? Security
- ? Scalability

NEW QUESTION 88

- (Topic 4)

A company is implementing Dynamics 365 Sales.

The company has turned off out-of-the-box quote calculations in order to implement its own custom calculations.

When users update a line item on a quote, they expect to see an updated total for the quote in real time. Users are reporting inconsistent behavior, with some aggregations taking up to two hours.

You review the system design and notice many asynchronous workflows. You need to recommend a solution to enable the calculation in real time.

Which two options should you recommend? Each answer presents a complete solution. NOTE: Each correct selection is worth one point.

- A. Consolidate asynchronous workflow into a single real-time workflow.
- B. Consolidate multiple asynchronous workflows into a single asynchronous workflow.
- C. Implement a business process flow to replace the existing workflows.
- D. Convert the asynchronous workflows to a synchronous plug-in.

Answer: AB

Explanation:

NEW QUESTION 92

- (Topic 4)

A company uses Microsoft Power Platform and Dynamics 365 Field Service.

External workers deliver onsite service to customer locations by using the Field Service (Dynamics 365) mobile app.

You need to ensure that external users can only use the app from specific locations. Which solution should you use?

- A. Azure Conditional Access policy
- B. Azure role-based access control (RBAC)
- C. Azure Active Directory security groups
- D. Azure multi-factor authentication (MFA)

Answer: A

NEW QUESTION 97

- (Topic 4)

You are designing a Microsoft Power Platform solution for a company that has multiple Microsoft Dataverse environments.

You need to prevent specific users from accessing specific environments. What should you do?

- A. Remove all security roles from the users of the specific environments.
- B. Remove the user from the business unit.
- C. Remove the user from all security groups.
- D. Remove the user from all teams.

Answer: A

Explanation:

Microsoft Dataverse uses a role-based security model to help secure access to the database. Security roles can be used to configure environment-wide access to all resources in the environment.

Reference:

<https://docs.microsoft.com/en-us/power-platform/admin/database-security>

NEW QUESTION 98

- (Topic 4)

A company has a Power Platform solution that integrates with a third-party system. The client reports that unexpected updates are being made to the Accounts table. You need to determine the root cause of the issue.

In which three locations should you investigate? Each correct answer presents a complete solution.

NOTE: Each correct selection is worth one point.

- A. Audit summary view
- B. Solution history
- C. SDK Message Processing Steps
- D. Plug-in trace log
- E. System job run history

Answer: ABD

Explanation:

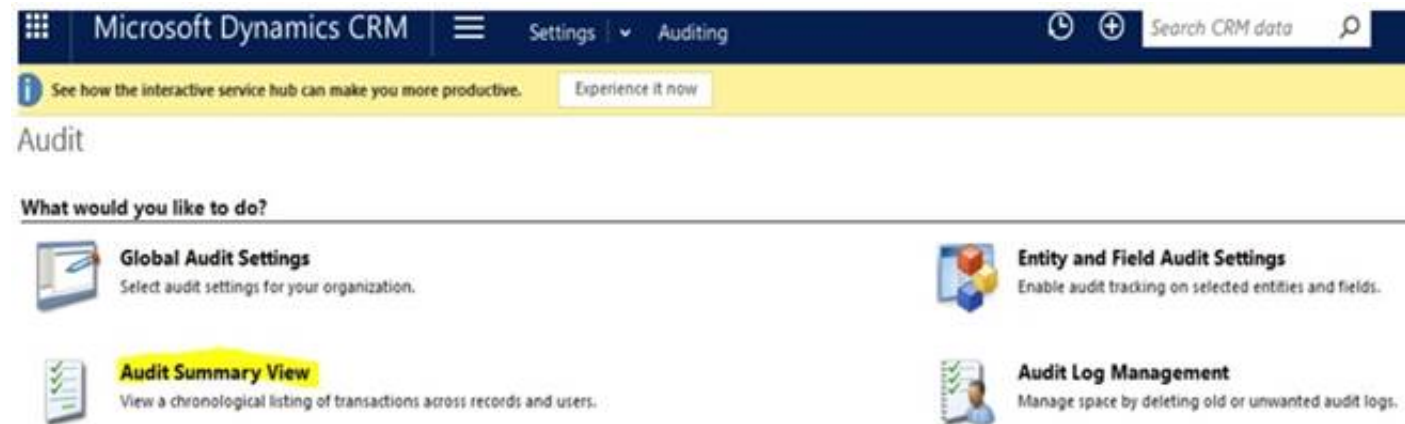
A: How to View Auditing Log Details?

System administrators can see activities for the entities that are enabled for audit logging. To view the audit logs:

? Go to Settings > System > Auditing.

? Choose Audit Summary View.

? Under Audit Summary View, you will see the list of audit entries



B: You can view details about solution operations from the Solutions area of Power Apps. An operation can be a solution import, export, or uninstall. The solution history displays information such as solution version, solution publisher, type of operation, operation start and end time, and operation status.

D: Trace log records are written to the PluginTraceLog Table. Writing of these records is controlled by the trace settings mentioned in

Enable trace logging.

This data can be found in model-driven applications by navigating to Settings and choosing the Plug-in Trace Log tile.

Reference:

<https://www.sherweb.com/blog/dynamics-365/audits-dynamics-365/> <https://docs.microsoft.com/en-us/powerapps/developer/data-platform/logging-tracing>

NEW QUESTION 102

- (Topic 4)

A client uses Dynamics 365 Sales, Power BI datasets, and Power BI dataflows.

The Dynamics 365 Sales implementation has security roles that restrict data export. You need to ensure that data has the same restrictions in Power BI as it does in Dynamics 365 Sales.

You need to design the security to avoid sensitive data from being seen.

Which two actions should you recommend? Each correct answer presents part of the solution.

NOTE: Each correct selection is worth one point.

- A. Use Microsoft Dataverse restrictions before setting up the Power BI reports.
- B. Limit the role in Dynamics 365 Sales to only data allowed so it cannot be exported to Microsoft Excel.
- C. Limit the role and ensure that exporting to Microsoft Excel is not allowed in both Dynamics 365 Sales and Power BI.
- D. Share Power BI dashboards only with users who are supported to see this data.

Answer: AB

Explanation:

A: When you share a dashboard or report, the people you share it with can view it and interact with it, but can't edit it. They see the same data that you see in the dashboard and reports and get access to the entire underlying dataset unless row-level security (RLS) is applied to the underlying dataset.

B: Depending on the sensitivity of an organization's data, it is often necessary to disable the ability to export or print reports.

Reference:

<https://docs.microsoft.com/en-us/power-bi/collaborate-share/service-share-dashboards>

NEW QUESTION 103

DRAG DROP - (Topic 4)

You are overseeing the data migration for a Microsoft Power Platform solution.

The migration team is performing a test migration with a subset of data. The migration team reports the following findings:

? Users who own account rows are receiving system generated emails.

? Data that is not part of the migration is being added to the Contact and Appointment tables.

? The size of the log listed on the Power Platform admin center Capacity page has increased significantly.

You need to recommend strategies to resolve the reported issues.

What should you recommend? To answer, drag the appropriate resolution to the correct migration problem. Each resolution may be used once, more than once, or not at all. You may need to drag the split bar between panes or scroll to view content.

NOTE: Each correct selection is worth one point.

Resolution strategies

- Disable auditing.
- Disable duplicate detection.
- Disable all custom JavaScript functions.
- Disable all workflows, plug-ins, and Power Platform admin center

Migration issue

Users who own account rows are receiving system generated emails.

Data that is not part of the migration is being added to the Contact and Appointment tables.

The size of the log listed on the Power Platform admin center Capacity page has increased significantly.

Resolution strategy

-
-
-

Answer:

Resolution strategies

- Disable auditing.
- Disable duplicate detection.
- Disable all custom JavaScript functions.
- Disable all workflows, plug-ins, and Power Platform admin center

Migration issue

Users who own account rows are receiving system generated emails.

Data that is not part of the migration is being added to the Contact and Appointment tables.

The size of the log listed on the Power Platform admin center Capacity page has increased significantly.

Resolution strategy

- Disable duplicate detection.
- Disable all workflows, plug-ins, and Power Platform admin center
- Disable auditing.

- A. Mastered
- B. Not Mastered

Answer: A

Explanation:

Box 1: Disable duplicate detection

Duplicate detection has rules for sending emails.

Box 2: Disable all workflows, plug-ins, and Power Platform admin center

Auditing affects the size of the log file.

NEW QUESTION 105

HOTSPOT - (Topic 4)

You are performing a fit gap requirements analysis.

You need to select Microsoft Power Platform components to satisfy the requirements. Which components should you use? To answer, select the appropriate options in the answer area.

NOTE: Each correct selection is worth one point.

Answer Area

Requirement

Coordinate long-term end-to-end delivery of financial counseling services to farmers.

Manage project accounting and recognize revenue compliant with international financial reporting standards.

Notify users of their overdue tasks on a daily basis.

Notify users of their overdue tasks on a daily basis.

Component

- Model-driven app
- Model-driven app
- Power Virtual Agents
- Dynamics 365 Customer Voice
- Dynamics 365 Finance
- Dynamics 365 Project Operations
- Dynamics 365 Field Service
- Dynamics 365 Finance
- Power Automate
- Power Automate
- Power Virtual Agents
- AppSource

- A. Mastered
- B. Not Mastered

Answer: A

Explanation:

Answer Area

Requirement

Coordinate long-term end-to-end delivery of financial counseling services to farmers.

Manage project accounting and recognize revenue compliant with international financial reporting standards.

Notify users of their overdue tasks on a daily basis.

Notify users of their overdue tasks on a daily basis.

Component

Model-driven app	Model-driven app
Power Virtual Agents	
Dynamics 365 Customer Voice	
Dynamics 365 Finance	Dynamics 365 Finance
Dynamics 365 Project Operations	
Dynamics 365 Field Service	
Dynamics 365 Finance	
Power Automate	Power Automate
Power Automate	
Power Virtual Agents	
AppSource	

NEW QUESTION 106

- (Topic 4)

You are designing a Microsoft Power Platform solution that uses Microsoft Dataverse.

You need to recommend a way to update currency exchange rates within Microsoft Dataverse.

What are two possible ways to achieve this goal? Each correct answer presents a complete solution.

NOTE: Each correct selection is worth one point.

- A. Review AppSource for prebuilt solutions.
- B. Create a Power Automate flow that uses a custom connection or HTTP request to an outside source for exchange rates.
- C. Embed an iframe that points to a currency exchange service into a model-driven app.
- D. Use the Power BI connector to establish a link that updates Microsoft Dataverse with the current exchange rate.

Answer: AB

Explanation:

B: We need is a source for exchange rates. There are some published connectors, but you also use a free service called Exchange Rates API, which are based on the European Central Bank, and create a custom connection.

Now that we have our custom connector defined and have a way to request the latest exchange rates, the next step is to create a Power Automate flow that will update all of currencies setup in our Dataverse environment.

Dataverse is a multicurrency system, in which each record can be associated with its own currency. This currency is called the transaction currency. The multicurrency features enable users to perform financial transactions like opportunities, quotes, orders, and invoices in multiple currencies. This feature also provides a currency choice to the end user when a financial transaction occurs.

Reference:

<https://readyxrm.blog/2021/03/10/updating-currency-exchange-rates-in-dataverse/>

NEW QUESTION 111

HOTSPOT - (Topic 4)

A company plans to create a Microsoft Power Platform solution that integrates with Dynamics 365 Sales. The solution must meet the following requirements:

- Connect directly with a Microsoft Azure SQL database as an external data source at run time where specific data is available in the Dynamics 365 Sales solution without the need for data replication.
- An external system needs to send data to the company's Dynamics 365 Sales solution. You need to recommend the most suitable solution to integrate Dynamics 365 Sales with both systems.

What should you recommend? To answer, select the appropriate option in the answer area.

Answer Area

Integration requirement

Have read-only visibility of data from an external Azure SQL database.

External system sends data to Dynamics 365 Sales.

Solutions

Use virtual tables.
 Use a custom plug-in.
 Use Dynamics 365 Web API.
 Use a web resource to display data.

Use a custom plug-in.
 Use Dynamics 365 Web API.
 Use a web resource to display data.

- A. Mastered
- B. Not Mastered

Answer: A

Explanation:

Answer Area

Integration requirement

Have read-only visibility of data from an external Azure SQL database.

External system sends data to Dynamics 365 Sales.

Solutions

Use virtual tables.

Use a custom plug-in.

Use Dynamics 365 Web API.

Use a web resource to display data.

Use a custom plug-in.

Use Dynamics 365 Web API.

Use a web resource to display data.

NEW QUESTION 114

DRAG DROP - (Topic 4)

You are a Microsoft Power Platform architect.

You need to design a process to transport configuration and test data from one environment to a separate environment

Which four actions should you recommend be performed in sequence? To answer, move the appropriate actions from the list of actions to the answer area and arrange them in the correct order.

Actions

Import the ZIP file data.

Import the CSV file data.

Define the schema of the source data to be exported.

Use the schema to export data.

Download the Configuration Migration tool from NuGet.

Create personal views to define the source data to be exported.

Download the schema of the source data to be exported.

Download the Configuration Migration tool from AppSource.

Answer area

1

2

3

4

- A. Mastered
B. Not Mastered

Answer: A

Explanation:

https://learn.microsoft.com/en-us/power-platform/admin/manage-configuration-data

NEW QUESTION 117

- (Topic 4)

You are designing a Microsoft Power Platform solution that will include multiple applications.

You have the following requirements:

- Support agents managing cases.
- Project managers reviewing and updating their projects.
- Stock managers managing warehouses.
- New site visitors self-registering.
- Employees tracking time entries.

Which three requirements can you meet by implementing role-based applications? Each correct answer presents a complete solution. NOTE: Each correct selection is worth one point.

- A. New site visitors self-resisting.
B. Project managers reviewing and updating their projects.
C. Stock managers managing warehouses.
D. Support agents managing cases.
E. Staff tracking time entries.

Answer: BCD

NEW QUESTION 118

DRAG DROP - (Topic 4)

A company plans to integrate Microsoft Power Platform with existing systems, including Microsoft Dynamics 365 Omni channel for Customer Service.

You need to recommend a solution for each requirement.

Which components should you recommend for the requirements?

To answer, drag the appropriate solutions to the correct requirements. Each solution may be used once, more than once, or not at all. You may need to drag the split bar between panes or scroll to view content.

Solutions

Custom API

Custom pages

Microsoft Power Virtual Agent

Requirement

Display information about the contact in the Omnichannel app.

Ensure only tables needed are exposed for integration purposes.

Display data hierarchy from other systems within Dynamics 365 without saving the data within Microsoft Dataverse.

Answer Area

Solution

- A. Mastered
B. Not Mastered

Answer: A

Explanation:

Solutions	Answer Area	Requirement	Solution
<div>Custom API</div> <div>Custom pages</div> <div>Microsoft Power Virtual Agent</div>		<p>Requirement</p> <p>Display information about the contact in the Omnichannel app.</p> <p>Ensure only tables needed are exposed for integration purposes.</p> <p>Display data hierarchy from other systems within Dynamics 365 without saving the data within Microsoft Dataverse.</p>	<div>Microsoft Power Virtual Agent</div> <div>Custom API</div> <div>Custom pages</div>

NEW QUESTION 123

HOTSPOT - (Topic 4)

You are designing a model-driven app that provides marketing, sales, and service operations to a company.

The app must integrate with the following systems and data sources:

- A third-party marketing system for lead generation and website submissions.
- A Microsoft Excel Online file that contains manufacturing data on relevant products.
- A separate Microsoft Dataverse environment.

You need to recommend Power Automate connectors for the app.

Which connections should you recommend? To answer, select the appropriate options in the answer area.

NOTE: Each correct selection is worth one point.

Answer Area

Data source	Connector type
Third-party marketing system	<div>Power BI connector</div> <div>SharePoint connector</div> <div>Custom connector</div> <div>Microsoft Forms connector</div>
Microsoft Dataverse environment	<div>SharePoint</div> <div>Azure Data Factory</div> <div>Microsoft Dataverse</div>

- A. Mastered
- B. Not Mastered

Answer: A

Explanation:

Box 1: Custom connector

While Azure Logic Apps, Microsoft Power Automate, and Microsoft Power Apps offer over 325+ connectors to connect to Microsoft and non-Microsoft services, you may want to communicate with services that aren't available as prebuilt connectors.

Box 2: Microsoft Dataverse

The Microsoft Dataverse connector provides several triggers to start your flows and many actions that you can use to create or update data in Dataverse while your flows run. You can use Dataverse actions even if your flows don't use a trigger from the Dataverse connector.

Use the Microsoft Dataverse connector to create cloud flows that start when data changes in Dataverse tables and custom messages.

NEW QUESTION 126

- (Topic 4)

You are a Power Platform consultant for an internet support company. The company lacks a budget to buy third-party ISVs or add-ons.

The company requires a new system that achieves the following:

- ? All support issues must come in by email, need to be logged, and assigned to the support group.
- ? Accounts must synchronize with the parent company Oracle database.
- ? Reports must be sent to the executives on a weekly basis.
- ? No custom code will be used in the system.

You need to recommend the components that should be configured.

Which two components should you recommend? Each correct answer presents part of the solution.

NOTE: Each correct selection is worth one point.

- A. Power Virtual Agents
- B. Microsoft Dataverse
- C. server-side synchronization
- D. Microsoft Customer Voice

Answer: BD

Explanation:

The Dynamics 365 Customer Voice data is stored in Microsoft Dataverse.

Dynamics 365 Customer Voice is an enterprise feedback management application you can use to easily keep track of the customer metrics that matter the most to your business. ... It provides a personalized experience, enabling you to collect customer feedback and get relevant insights quickly and easily, all in a few clicks.

Reference:

<https://docs.microsoft.com/en-us/dynamics365/customer-voice/about> <https://docs.microsoft.com/en-us/dynamics365/customer-voice/data-flow>

NEW QUESTION 128

DRAG DROP - (Topic 4)

A company plans to integrate a model-driven app with external data sources. The company has the following requirements:

- Consume data in its data warehouse from Microsoft Dataverse.

• Use a plug-in to retrieve information from an external service.
You need to recommend a Microsoft Azure component for each requirement.
Which Azure components should you recommend? To answer, drag the appropriate Azure components to the correct requirements.
Each Azure component may be used once, more than once, or not at all. You may need to drag the split bar between panes or scroll to view content.
NOTE: Each correct selection is worth one point.

Azure Event Hub

Azure Service Bus

Azure Data Factory

Azure Synapse Link

Answer Area

Requirement

Consume data in a data warehouse.

Consume data from an external source.

Azure component

- A. Mastered
- B. Not Mastered

Answer: A

Explanation:

Azure Event Hub

Azure Service Bus

Azure Data Factory

Azure Synapse Link

Answer Area

Requirement

Consume data in a data warehouse.

Consume data from an external source.

Azure component

Azure Data Factory

Azure Service Bus

NEW QUESTION 130

HOTSPOT - (Topic 4)

A company plans to use a combination of model-driven and canvas apps for data interaction and Power BI for data reporting. The company has the following requirements:

- Share a canvas app with the auditor team.
- Ensure account balance values in Power BI are only viewable by the investment team.
- Streamline user administration and role assignment.

You need to recommend a security component to use for each requirement.
Which security components should you recommend? To answer, select the appropriate options in the answer area.
NOTE: Each correct selection is worth one point.

Answer Area

Requirement

Share a canvas app.

Control account balance visibility.

Streamline user administration and role assignment.

Security component

Microsoft Entra ID security group

Security roles

Column-level security

Manager hierarchy model

Microsoft Entra ID security group

Report access

Report access

Column-level security

Microsoft Entra ID security group

Manager hierarchy model

Security roles

Column-level security

Manager hierarchy model

Microsoft Entra ID security group

Answer:

Answer Area

Requirement

Share a canvas app.

Control account balance visibility.

Streamline user administration and role assignment.

Security component

Microsoft Entra ID security group

Security roles

Column-level security

Manager hierarchy model

Microsoft Entra ID security group

Report access

Report access

Column-level security

Microsoft Entra ID security group

Manager hierarchy model

Security roles

Column-level security

Manager hierarchy model

Microsoft Entra ID security group

- A. Mastered
- B. Not Mastered

Answer: A

NEW QUESTION 135

- (Topic 4)

You are designing a Power Platform solution for a company.

Users must be granted access only to data that is relevant to them.

You need to recommend actions to meet the requirements.

Which two recommendations should you make? Each correct answer presents part of the solution.

NOTE: Each correct selection is worth one point.

- A. Add column security profiles to applicable teams.
- B. Define and configure security roles.
- C. Create teams and assign security roles and users to the teams.
- D. Create business units and assign security roles to the business units.

Answer: BD

Explanation:

To control data access, you must set up an organizational structure that both protects sensitive data and enables collaboration. You do this by setting up business units, security roles, and field security profiles.

Reference:

<https://docs.microsoft.com/en-us/power-platform/admin/security-roles-privileges>

NEW QUESTION 136

- (Topic 4)

A company wants to add an interactive checklist to a Power Platform solution to ensure that salespeople are following the same steps when qualifying leads.

You need to recommend a solution that will incorporate this checklist. What should you recommend?

- A. Mastered
- B. Not Mastered

Answer: A

NEW QUESTION 139

HOTSPOT - (Topic 4)

A company offers continuing education courses for medical professionals. Each time a course is offered, the company tracks that the session has taken place in an Excel workbook.

The company maintains a list of required qualifications for an educator to teach a course. Educator qualifications range from languages spoken to advanced degrees.

The company needs the following custom table relationships defined:

? Associate educators with a list of their professional qualifications.

? Assign a primary educator to each course that is held.

? Collect information about every course that is held.

You need to determine the type of relationship that best fits the requirement.

Which type of table relationship should you use? To answer, select the appropriate options in the answer area.

NOTE: Each correct selection is worth one point.

Requirement	Relationship
Educators must be associated with their qualifications.	<div>▼</div> <div>Many-to-many relationship that uses a system generated table</div> <div>Many-to-many relationship that uses a custom table</div> <div>One-to-many relationship</div>
When a course is held there must be a primary educator assigned.	<div>▼</div> <div>Many-to-many relationship that uses a system generated table</div> <div>Many-to-many relationship that uses a custom table</div> <div>One-to-many relationship</div>
When a course is held, the company needs to collect information on that session.	<div>▼</div> <div>Many-to-many relationship that uses a system generated table</div> <div>Many-to-many relationship that uses a custom table</div> <div>One-to-many relationship</div>

- A. Mastered
- B. Not Mastered

Answer: A

Explanation:

Requirement	Relationship
Educators must be associated with their qualifications.	<div>▼</div> <div>Many-to-many relationship that uses a system generated table</div> <div>Many-to-many relationship that uses a custom table</div> <div>One-to-many relationship</div>
When a course is held there must be a primary educator assigned.	<div>▼</div> <div>Many-to-many relationship that uses a system generated table</div> <div>Many-to-many relationship that uses a custom table</div> <div>One-to-many relationship</div>
When a course is held, the company needs to collect information on that session.	<div>▼</div> <div>Many-to-many relationship that uses a system generated table</div> <div>Many-to-many relationship that uses a custom table</div> <div>One-to-many relationship</div>

NEW QUESTION 141

HOTSPOT - (Topic 4)

You are supporting the go-live process for a company. The company is responsible for migrating data to the Microsoft Power Platform by using a custom solution. The company reports the following issues:

- Migration processes fail due to operation timeouts.
- Records that include lookup columns often fail to load. You need to recommend a solution.

What should you recommend? To answer, select the appropriate options in the answer area.

NOTE: Each correct selection is worth one point.

Answer Area

Issue	Solution
Migration processes fail due to operation timeouts.	<div>▼</div> <div>Increase multithreading and/or batch size settings.</div> <div>Increase multithreading and/or batch size settings.</div> <div>Decrease multithreading and/or batch size settings.</div> <div>Ensure you are loading data into all tables at the same time.</div> <div>Ensure you are loading data into tables in a particular order.</div>
Records that include lookup columns often fail to load.	<div>▼</div> <div>Ensure you are loading data into tables in a specific order.</div> <div>Increase multithreading and/or batch size settings.</div> <div>Decrease multithreading and/or batch size settings.</div> <div>Ensure you are loading data into all tables at the same time.</div> <div>Ensure you are loading data into tables in a specific order.</div>

- A. Mastered
B. Not Mastered

Answer: A

Explanation:

Answer Area

Issue	Solution
Migration processes fail due to operation timeouts.	<div>▼</div> <div>Increase multithreading and/or batch size settings.</div> <div>Increase multithreading and/or batch size settings.</div> <div>Decrease multithreading and/or batch size settings.</div> <div>Ensure you are loading data into all tables at the same time.</div> <div>Ensure you are loading data into tables in a particular order.</div>
Records that include lookup columns often fail to load.	<div>▼</div> <div>Ensure you are loading data into tables in a specific order.</div> <div>Increase multithreading and/or batch size settings.</div> <div>Decrease multithreading and/or batch size settings.</div> <div>Ensure you are loading data into all tables at the same time.</div> <div>Ensure you are loading data into tables in a specific order.</div>

NEW QUESTION 145

- (Topic 4)

A company has a model-driven app. The app has forms with both Business Rules and JavaScript added to handle the business logic on the form. The form contains logic that is enforced by using business rules. The company wants to apply the business rules to all forms in the app. You need to recommend a simplified form setup so the form can be maintained moving forward. What should you recommend?

- A. Manage the business logic with a Power Apps Component Framework (PCF) control.
B. Evaluate whether complex parts of the logic can be solved by using Power Apps Component Framework (PCF) controls.
C. Use Business Rules for the remaining functionality.
D. Remove the Business Rules and use only JavaScript.
E. Update logic to ensure Business Rules are optimized.
F. Use JavaScript for the remaining functionality.

Answer: B

Explanation:

PCF controls are reusable. Reference:

<https://docs.microsoft.com/en-us/powerapps/developer/component-framework/overview>

NEW QUESTION 149

- (Topic 4)

You are designing tables and columns for a Microsoft Power Platform solution. The solution will contain an interactive experience dashboard.

You need to ensure that the columns you create can be used as global filters for the dashboard.

Which two data types can you use? Each correct answer presents a complete solution. NOTE: Each correct selection is worth one point.

- A. Yes/No
- B. Choice
- C. Text
- D. Multiline Text
- E. Lookup

Answer: AB

Explanation:

<https://docs.microsoft.com/en-us/powerapps/maker/data-platform/create-edit-field-solution-explorer#column-data-types>

With interactive dashboards, a chart uses the color assigned to the categories that make up the different values, even if the chart is configured to use random colors, when the chart is configured to be grouped by any of the following column types:

Choice Yes/No

Status Reason

Reference:

<https://docs.microsoft.com/en-us/powerapps/maker/model-driven-apps/configure-interactive-experience-dashboards>

NEW QUESTION 153

DRAG DROP - (Topic 4)

You are a Microsoft Power Platform solution architect capturing requirements for a national retail chain project. The project has the following requirements:

- Retail employees must use the application on a company-provided tablet device.
- The app must store data offline.
- Environment capacity must be monitored to ensure usage stays within 80 percent of available capacity.
- Apps are shared with security group teams for users to access.

You need to identify the project's functional and non-functional requirements.

How should you categorize the requirements? To answer, drag the appropriate categories to the correct requirements. Each category may be used once, more than once, or not at all. You may need to drag the split bar between panes or scroll to view content.

Categories

Functional

Non-functional

Requirement

Retail employees must use the application on a company-provided tablet device.

The app must store data offline.

Environment capacity must be monitored to ensure usage stays within 80 percent of available capacity.

Apps are shared with security group teams for users to access.

Category

Functional

Non-functional

Answer:

Functional

Non-functional

Functional

Functional

Non-functional

Non-functional

- A. Mastered
- B. Not Mastered

Answer: A

NEW QUESTION 155

HOTSPOT - (Topic 4)

A multinational organization uses a single Microsoft Power Platform environment. The instance hosts multiple customizations for different users in different regions.

Users in some regions complain about slow load time of the customizations. You need to architect a solution based on the main requirement.

What should you recommend? To answer, select the appropriate option in the answer area.

NOTE: Each correct selection is worth one point.

Answer Area

Goal	Suggested solution
Divisions actively collaborate on customers.	Single instance; use Microsoft Azure Traffic Manager where needed Multi-tenant with one Power Platform environment in each region Multiple instances in different regions; Power BI for reporting Single multi-geo instance
Regions have separate customers but use the same functionality and need global reporting.	Multiple instances in different regions with data replication Multi-tenant with one Power Platform environment in each region Multiple instances in different regions; Power BI for reporting Single multi-geo instance
Regions have separate functionality and customers but need global reporting on data.	Single instance; use Microsoft Azure Traffic Manager Multi-tenant with one Power Platform environment in each region Multiple instances in different regions; Power BI for reporting Single multi-geo instance

- A. Mastered
 B. Not Mastered

Answer: A

Explanation:

Answer Area

Goal	Suggested solution
Divisions actively collaborate on customers.	Single instance; use Microsoft Azure Traffic Manager where needed Multi-tenant with one Power Platform environment in each region Multiple instances in different regions; Power BI for reporting Single multi-geo instance
Regions have separate customers but use the same functionality and need global reporting.	Multiple instances in different regions with data replication Multi-tenant with one Power Platform environment in each region Multiple instances in different regions; Power BI for reporting Single multi-geo instance
Regions have separate functionality and customers but need global reporting on data.	Single instance; use Microsoft Azure Traffic Manager Multi-tenant with one Power Platform environment in each region Multiple instances in different regions; Power BI for reporting Single multi-geo instance

NEW QUESTION 158

HOTSPOT - (Topic 4)

You are designing a Power Platform solution for a company that provides in-home appliance maintenance. When a customer schedules a service appointment, a dispatcher assigns one technician for a specific time and location.

The solution must capture information about the technician assigned to each appointment and the list of tools that the technician must bring to the appointment.

You need to recommend the data type for the captured information.

Which data type should you use? To answer, select the appropriate options in the answer area.

NOTE: Each correct selection is worth one point.

Requirement

Data type

Capture information about the technician assigned to each service appointment.

	▼
Choice	
Choices	
Customer	
Lookup	

Select the tools that the technician must bring to an appointment.

	▼
Choices	
Customer	
Lookup	
Text	

- A. Mastered
 B. Not Mastered

Answer: A

Explanation:

Box 1: Choice

Like Choices below, but can only select one of the option.

Box 2: Choices

You can customize forms (main, quick create, and quick view) and email templates by adding multi-select columns that are called Choices. When you add a choices column, you can specify multiple values that will be available for users to select. When users fill out the form they can select one, multiple, or all the values displayed in a drop-down list.

NEW QUESTION 163

- (Topic 4)

You are designing a solution for a national vehicle repair company. You have the following requirements:

- Customers must search for vehicle issues by using natural language expressions.
- Customers must contact a customer service agent as required. You need to recommend a solution.

Which two features should you include? Each correct answer presents part of the solution.

- A. Power Virtual Agents
- B. Business process flow
- C. Power Apps portal
- D. Customer Insights

Answer: BC

NEW QUESTION 168

- (Topic 4)

You are designing a Power Platform solution.

During quality assurance testing the API limits are reached. You need to identify and resolve the issue.

Which two actions should you recommend? Each correct answer presents part of the solution.

NOTE: Each correct selection is worth one point.

- A. Allocate Microsoft Dataverse capacity add-on subscriptions.
- B. Use the out-of-the-box User Summary report from the Reports section of the solution's model-driven app.
- C. In the Power Platform admin center Review the Home tab Dataverse analytics dashboard.
- D. In the Power Platform admin center, review the Usage section of the Power Apps analytics dashboard.
- E. In the Power Platform admin center, review the Runs section of the Power Automate analytics dashboard.

Answer: AC

Explanation:

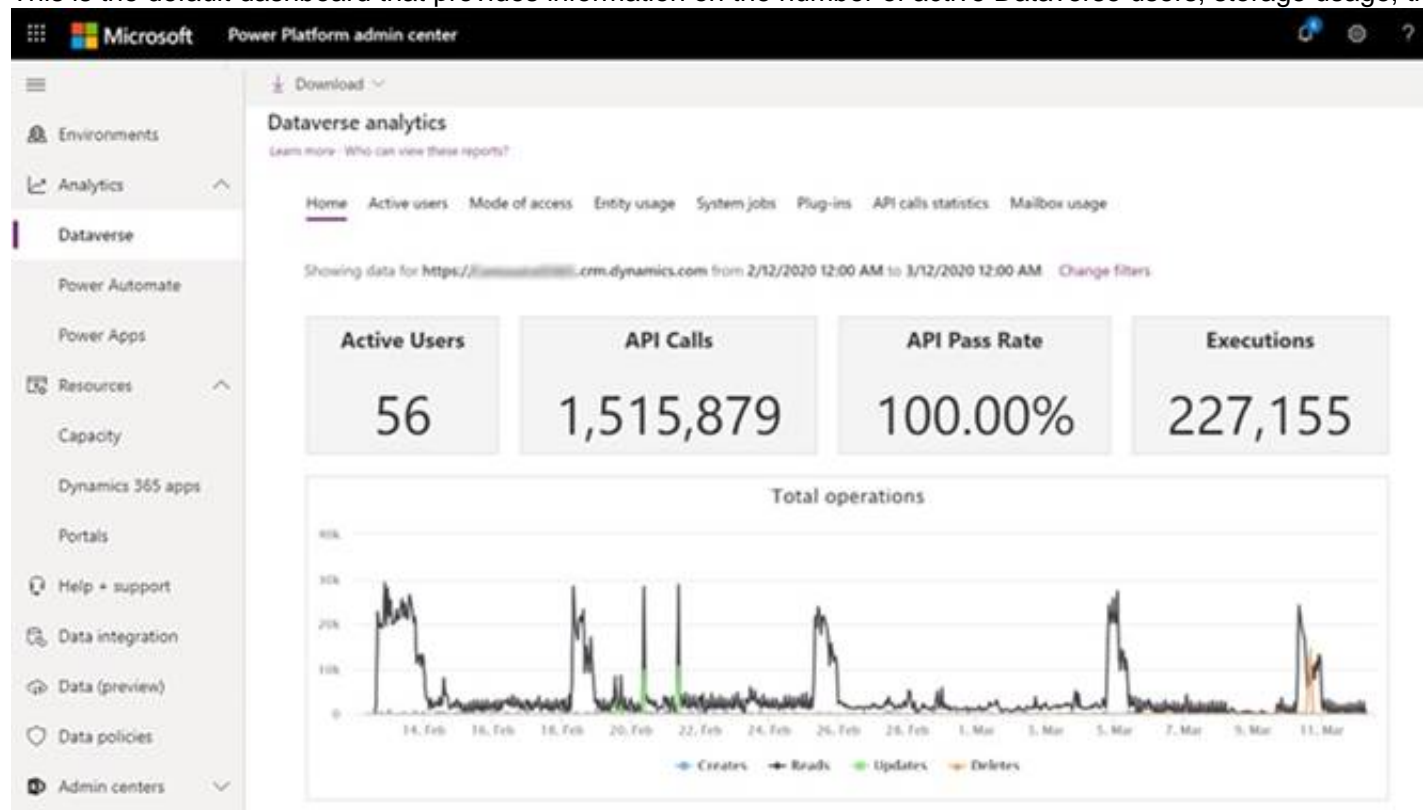
A: When users exceed their limits, administrators can see this in the admin center (see below). You can do either one of the following:

? Adjust the app or flow to use fewer API requests

? Purchase the Power Apps and Power Automate capacity add-on for your organization.

C: Home (default) Dashboard.

This is the default dashboard that provides information on the number of active Dataverse users, storage usage, the most active workflows, and more.



API Calls: API Calls Number of API calls that were made by the Dataverse environment for the selected time period.

Reference:

<https://docs.microsoft.com/en-us/power-platform/admin/api-request-limits-allocations> <https://docs.microsoft.com/en-us/power-platform/admin/analytics-common-data-service>

NEW QUESTION 171

- (Topic 4)

You are implementing a solution that includes applications which perform high-volume Microsoft Dataverse operations.

The applications must not experience a loss of functionality or loss of performance due to service protection API limits.

You need to evaluate metrics for the service protection API limits.

Which three metrics should you evaluate? Each correct answer pat of the solution. NOTE Each correct selection is worth one point.

- A. Number of concurrent connections per user account.
- B. Number of API requests per web server.

- C. Amount of API calls made within plug-in code.
- D. Amount of execution time that can be used for each connection.
- E. Number of API requests per connection.

Answer: ADE

NEW QUESTION 175

.....

THANKS FOR TRYING THE DEMO OF OUR PRODUCT

Visit Our Site to Purchase the Full Set of Actual PL-600 Exam Questions With Answers.

We Also Provide Practice Exam Software That Simulates Real Exam Environment And Has Many Self-Assessment Features. Order the PL-600 Product From:

<https://www.2passeasy.com/dumps/PL-600/>

Money Back Guarantee

PL-600 Practice Exam Features:

- * PL-600 Questions and Answers Updated Frequently
- * PL-600 Practice Questions Verified by Expert Senior Certified Staff
- * PL-600 Most Realistic Questions that Guarantee you a Pass on Your FirstTry
- * PL-600 Practice Test Questions in Multiple Choice Formats and Updatesfor 1 Year