



Red-Hat

Exam Questions EX200

EX200 Red Hat Certified System Administrator (RHCSA) Exam

NEW QUESTION 1

CORRECT TEXT

Search a String

Find out all the columns that contains the string seismic within /usr/share/dict/words, then copy all these columns to /root/lines.tx in original order, there is no blank line, all columns must be the accurate copy of the original columns.

- A. Mastered
- B. Not Mastered

Answer: A

Explanation:

grep seismic /usr/share/dict/words> /root/lines.txt

NEW QUESTION 2

CORRECT TEXT

There are two different networks 192.168.0.0/24 and 192.168.1.0/24. Where 192.168.0.254 and 192.168.1.254 IP Address are assigned on Server. Verify your network settings by pinging 192.168.1.0/24 Network's Host.

- A. Mastered
- B. Not Mastered

Answer: A

Explanation:

```
? vi /etc/sysconfig/network NETWORKING=yes HOSTNAME=station?.example.com GATEWAY=192.168.0.254
service network restart
* 2.vi /etc/sysconfig/network-scripts/ifcfg-eth0
DEVICE=eth0 ONBOOT=yes
BOOTPROTO=static
IPADDR=X.X.X.X
NETMASK=X.X.X.X
GATEWAY=192.168.0.254
ifdown eth0
ifup eth0
```

NEW QUESTION 3

CORRECT TEXT

Create a logical volume

Create a new logical volume as required:

Name the logical volume as database, belongs to datastore of the volume group, size is 50 PE.

Expansion size of each volume in volume group datastore is 16MB.

Use ext3 to format this new logical volume, this logical volume should automatically mount to /mnt/database

- A. Mastered
- B. Not Mastered

Answer: A

Explanation:

```
fdisk -cu /dev/vda// Create a 1G partition, modified when needed
partx -a /dev/vda
pvcreate /dev/vdax
vgcreate datastore /dev/vdax -s 16M
lvcreate- l 50 -n database datastore
mkfs.ext3 /dev/datastore/database
mkdir /mnt/database
mount /dev/datastore/database /mnt/database/ df -Th
vi /etc/fstab
/dev/datastore /database /mnt/database/ ext3 defaults 0 0 mount -a
Restart and check all the questions requirements.
```

NEW QUESTION 4

CORRECT TEXT

Notes:

NFS NFS instructor.example.com:/var/ftp/pub/rhel6/dvd

YUM http://instructor.example.com/pub/rhel6/dvd

ldap http://instructor.example.com/pub/EXAMPLE-CA-CERT Install dialog package.

- A. Mastered
- B. Not Mastered

Answer: A

Explanation:

yum install dialog

NEW QUESTION 5

CORRECT TEXT

Configure your system so that it is an NTP client of server.domain11.example.com

- A. Mastered
- B. Not Mastered

Answer: A

Explanation:

#system-config-date

Note: dialog box will open in that

Check mark Synchronize date and time over network. Remove all the NTP SERVER and click ADD and type server.domain11.example.com

***** And then press ENTER and the press OK*****

NEW QUESTION 6

CORRECT TEXT

Resize the logical volume vo and its filesystem to 290 MB. Make sure that the filesystem contents remain intact.

Note: Partitions are seldom exactly the same size requested, so a size within the range of 260 MB to 320 MiB is acceptable.

- A. Mastered
- B. Not Mastered

Answer: A

Explanation:

df -hT

lvextend -L +100M /dev/vg0/vo

lvscan

xfs_growfs /home/ // home is LVM mounted directory

Note: This step is only need to do in our practice environment, you do not need to do in the real exam

resize2fs /dev/vg0/vo // Use this comand to update in the real exam df -hT

OR

e2fsck -f/dev/vg0/vo

umount /home

resize2fs /dev/vg0/vo required partition capacity such as 100M lvreduce -l 100M

/dev/vg0/vo mount /dev/vg0/vo /home

df -Ht

NEW QUESTION 7

CORRECT TEXT

In the system, mounted the iso image /root/examine.iso to/mnt/iso directory. And enable automatically mount (permanent mount) after restart system.

- A. Mastered
- B. Not Mastered

Answer: A

Explanation:

mkdir -p /mnt/iso

/etc/fstab:

/root/examine.iso /mnt/iso iso9660 loop 0 0 mount -a

mount | grep examine

NEW QUESTION 8

CORRECT TEXT

Part 1 (on Node1 Server)

Task 4 [Controlling Access to Files]

Create collaborative directory /mnt/shares with the following characteristics: Group ownership of /mnt/shares should be sharegrp.

The directory should be readable, writable and accessible to member of sharegrp but not to any other user. (It is understood that root has access to all files and directories on the system)

Files created in /mnt/shares automatically have group ownership set to the sharegrp group.

- A. Mastered
- B. Not Mastered

Answer: A

Explanation:

*

[root@node1 ~]# mkdir -p /mnt/shares

[root@node1 ~]# ls -lrt /mnt/

[root@node1 ~]# chgrp sharegrp /mnt/shares/

[root@node1 ~]# chmod 2770 /mnt/shares/

[root@node1 ~]# ls -lrt /mnt/

For Checking

[root@node1 ~]# su - harry

[harry@node1 ~]\$ cd /mnt/shares/

[harry@node1 shares]\$ touch harry

```
[harry@node1 shares]$ logout
[root@node1 ~]# su - natasha
[natasha@node1 ~]$ cd /mnt/shares/
[natasha@node1 shares]$ touch natasha
[natasha@node1 shares]$ ls -lrt
-rw-rw-r--. 1 harry sharegrp 0 Mar 21 06:03 harry
-rw-rw-r--. 1 natasha sharegrp 0 Mar 21 06:03 natasha
```

NEW QUESTION 9

CORRECT TEXT

Create a 512M partition, make it as ext4 file system, mounted automatically under /mnt/data and which take effect automatically at boot-start.

- A. Mastered
- B. Not Mastered

Answer: A

Explanation:

```
# fdisk /dev/vda
n
+512M
w
# partprobe /dev/vda
# mkfs -t ext4 /dev/vda5
# mkdir -p /data
# vim /etc/fstab
/dev/vda5 /data ext4 defaults 0 0
# mount -a
```

NEW QUESTION 10

CORRECT TEXT

Create the following users, groups, and group memberships: A group named adminuser.

A user natasha who belongs to adminuser as a secondary group A user harry who also belongs to adminuser as a secondary group.

A user sarah who does not have access to an interactive shell on the system, and who is not a member of adminuser, natasha, harry, and sarah should all have the password of redhat.

- A. Mastered
- B. Not Mastered

Answer: A

Explanation:

```
? groupadd sysmgrs
? useradd -G sysmgrs Natasha
? We can verify the newly created user by cat /etc/passwd
# useradd -G sysmgrs harry
# useradd -s /sbin/nologin sarrah
# passwd Natasha
# passwd harry
# passwd sarrah
```

NEW QUESTION 10

CORRECT TEXT

Binding to an external validation server.

System server.domain11.example.com provides a LDAP validation service, your system should bind to this service as required:

Base DN of validation service is dc=example,dc=com

LDAP is used for providing account information and validation information Connecting and using the certification of

http://server.domain11.example.com/pub/EXAMPLE-CA-CERT to encrypt

After the correct configuration, ldapuser1 can log into your system, it does not have HOME directory until you finish autofs questions, ldapuser1 password is password.

- A. Mastered
- B. Not Mastered

Answer: A

Explanation:

yum -y install sssd authconfig-gtk krb5-workstation authconfig-gtk // open the graphical interface

Modify user account database to ldap, fill up DN and LDAP SERVER as questions required, use TLS to encrypt connections making tick, write

http://server.domain11.example.com/pub/EXAMPLE-CA-CERT to download ca, authentication method choose ldap password.

You can test if the ldapuser is added by the following command:

```
Id ldapuser1
```

Note: user password doesn't need to set

NEW QUESTION 14

CORRECT TEXT

Create a volume group, and set 8M as a extends. Divided a volume group containing 50 extends on volume group lv (lvshare), make it as ext4 file system, and mounted automatically under /mnt/data. And the size of the floating range should set between 380M and 400M.

- A. Mastered
- B. Not Mastered

Answer: A

Explanation:

```
# fdisk
# partprobe
# pvcreate /dev/vda6
# vgcreate -s 8M vg1 /dev/vda6 -s
# lvcreate -n lvshare -l 50 vg1 -l
# mkfs.ext4 /dev/vg1/lvshare
# mkdir -p /mnt/data
# vim /etc/fstab
/dev/vg1/lvshare /mnt/data ext4 defaults 0 0
# mount -a
# df -h
```

NEW QUESTION 17

CORRECT TEXT

Create a new logical volume according to the following requirements:

The logical volume is named database and belongs to the datastore volume group and has a size of 50 extents.

Logical volumes in the datastore volume group should have an extent size of 16 MB. Format the new logical volume with a ext3 filesystem.

The logical volume should be automatically mounted under /mnt/database at system boot time.

- A. Mastered
- B. Not Mastered

Answer: A

Explanation:

```
fdisk -cu /dev/vda
partx -a /dev/vda
pvcreate /dev/vdax
vgcreate datastore /dev/vdax -s 16M
lvcreate-l 50 -n database datastore
mkfs.ext3 /dev/datastore/database
mkdir /mnt/database
mount /dev/datastore/database /mnt/database/ df -Th
vi /etc/fstab
/dev/datastore /database /mnt/database/ ext3 defaults 0 0 mount -a
```

NEW QUESTION 20

CORRECT TEXT

Create a volume group, and set 16M as a extends. And divided a volume group containing 50 extends on volume group lv, make it as ext4 file system, and mounted automatically under /mnt/data.

- A. Mastered
- B. Not Mastered

Answer: A

Explanation:

```
# pvcreate /dev/sda7 /dev/sda8
# vgcreate -s 16M vg1 /dev/sda7 /dev/sda8
# lvcreate -l 50 -n lvm02
# mkfs.ext4 /dev/vg1/lvm02
# blkid /dev/vg1/lv1
# vim /etc/fstab
# mkdir -p /mnt/data
UUID=xxxxxxx /mnt/data ext4 defaults 0 0
# vim /etc/fstab
# mount -a
# mount (Verify)
```

NEW QUESTION 21

CORRECT TEXT

Please open the ip_forward, and take effect permanently.

- A. Mastered
- B. Not Mastered

Answer: A

Explanation:

```
? vim /etc/sysctl.conf net.ipv4.ip_forward = 1
? sysctl -w (takes effect immediately)
If no "sysctl.conf" option, use these commands:
? sysctl -a |grep net.ipv4
? sysctl -P net.ipv4.ip_forward = 1
```

? sysctl -w

NEW QUESTION 25

CORRECT TEXT

Configure autofs to automount the home directories of LDAP users as follows: host.domain11.example.com NFS-exports /home to your system.

This filesystem contains a pre-configured home directory for the user ldapuser11 ldapuser11's home directory is host.domain11.example.com /rhome/ldapuser11

ldapuser11's home directory should be automounted locally beneath /rhome as

/rhome/ldapuser11

Home directories must be writable by their users ldapuser11's password is 'password'.

A. Mastered

B. Not Mastered

Answer: A

Explanation:

```
? vim /etc/auto.master /rhome /etc/auto.misc
```

```
wq!
```

```
# vim /etc/auto.misc
```

```
ldapuser11 --rw,sync host.domain11.example.com:/rhome/ldpauser11 :wq!
```

```
#service autofs restart
```

```
? service autofs reload
```

```
? chkconfig autofs on
```

```
? su -ldapuser11
```

```
Login ldapuser with home directory
```

```
# exit
```

NEW QUESTION 26

CORRECT TEXT

Configure your web services, download from <http://instructor.example.com/pub/serverX.html> And the services must be still running after system rebooting.

A. Mastered

B. Not Mastered

Answer: A

Explanation:

```
cd /var/www/html
```

```
wget http://instructor.example.com/pub/serverX.html mv serverX.html index.html
```

```
/etc/init.d/httpd restart
```

```
chkconfig httpd on
```

NEW QUESTION 27

CORRECT TEXT

Part 2 (on Node2 Server)

Task 5 [Managing Logical Volumes]

Add an additional swap partition of 656 MiB to your system. The swap partition should automatically mount when your system boots

Do not remove or otherwise alter any existing swap partition on your system

A. Mastered

B. Not Mastered

Answer: A

Explanation:

```
*
```

```
[root@node2 ~]# lsblk
```

```
NAME MAJ:MIN RM SIZE RO TYPE MOUNTPOINT
```

```
vdc 252:32 0 5G 0 disk
```

```
vdc1 252:33 0 4.1G 0 part
```

```
datavg-dataLV 253:3 0 3.9G 0 lvm /data
```

```
vdd 252:48 0 5G 0 disk
```

```
vde 252:64 0 10G 0 disk
```

```
[root@node2 ~]# swapon -s
```

```
Filename Type Size Used Priority
```

```
/dev/dm-1 partition 2097148 1548 -2
```

```
[root@node2 ~]# free -m
```

```
total used free shared buff/cache available
```

```
Mem: 1816 1078 104 13 633 573
```

```
Swap: 2047 1 2046
```

```
[root@node2 ~]# parted /dev/vdc print
```

```
Number Start End Size Type File system Flags
```

```
1 1049kB 4404MB 4403MB primary lvm
```

```
*
```

```
[root@node2 ~]# parted /dev/vdc mkpart primary linux-swap 4404MiB 5060MiB
```

```
[root@node2 ~]# mkswap /dev/vdc2
```

```
Setting up swap space version 1, size = 656 MiB (687861760 bytes)
```

```
no label, UUID=9faf818f-f070-4416-82b2-21a41988a9a7
```

```
[root@node2 ~]# swapon -s
```

```
Filename Type Size Used Priority
```

```
/dev/dm-1 partition 2097148 1804 -2
[root@node2 ~]# swapon /dev/vdc2
*
[root@node2 ~]# swapon -s
Filename Type Size Used Priority
/dev/dm-1 partition 2097148 1804 -2
/dev/vdc2 partition 671740 0 -3
[root@node2 ~]# blkid
/dev/vdc2: UUID="9faf818f-f070-4416-82b2-21a41988a9a7" TYPE="swap"
PARTUUID="0f22a35f-02"
[root@node2 ~]# vim /etc/fstab
UUID=9faf818f-f070-4416-82b2-21a41988a9a7 swap swap defaults 0 0
[root@node2 ~]# reboot
[root@node2 ~]# swapon -s
Filename Type Size Used Priority
/dev/dm-1 partition 2097148 1804 -2
/dev/vdc2 partition 671740 0 -3
```

NEW QUESTION 28

CORRECT TEXT

Copy /etc/fstab document to /var/TMP directory. According the following requirements to configure the permission of this document.

- ? The owner of this document must be root.
- ? This document belongs to root group.
- ? User mary have read and write permissions for this document.
- ? User alice have read and execute permissions for this document.
- ? Create user named bob, set uid is 1000. Bob have read and write permissions for this document.
- ? All users has read permission for this document in the system.

- A. Mastered
- B. Not Mastered

Answer: A

Explanation:

```
cp /etc/fstab /var/tmp
chown root:root /var/tmp/fstab
chmod a-x /var/tmp/fstab
setfacl -m u:mary:rw /var/tmp/fstab
setfacl -m u:alice:rx /var/tmp/fstab
useradd -u 1000 bob
```

NEW QUESTION 32

CORRECT TEXT

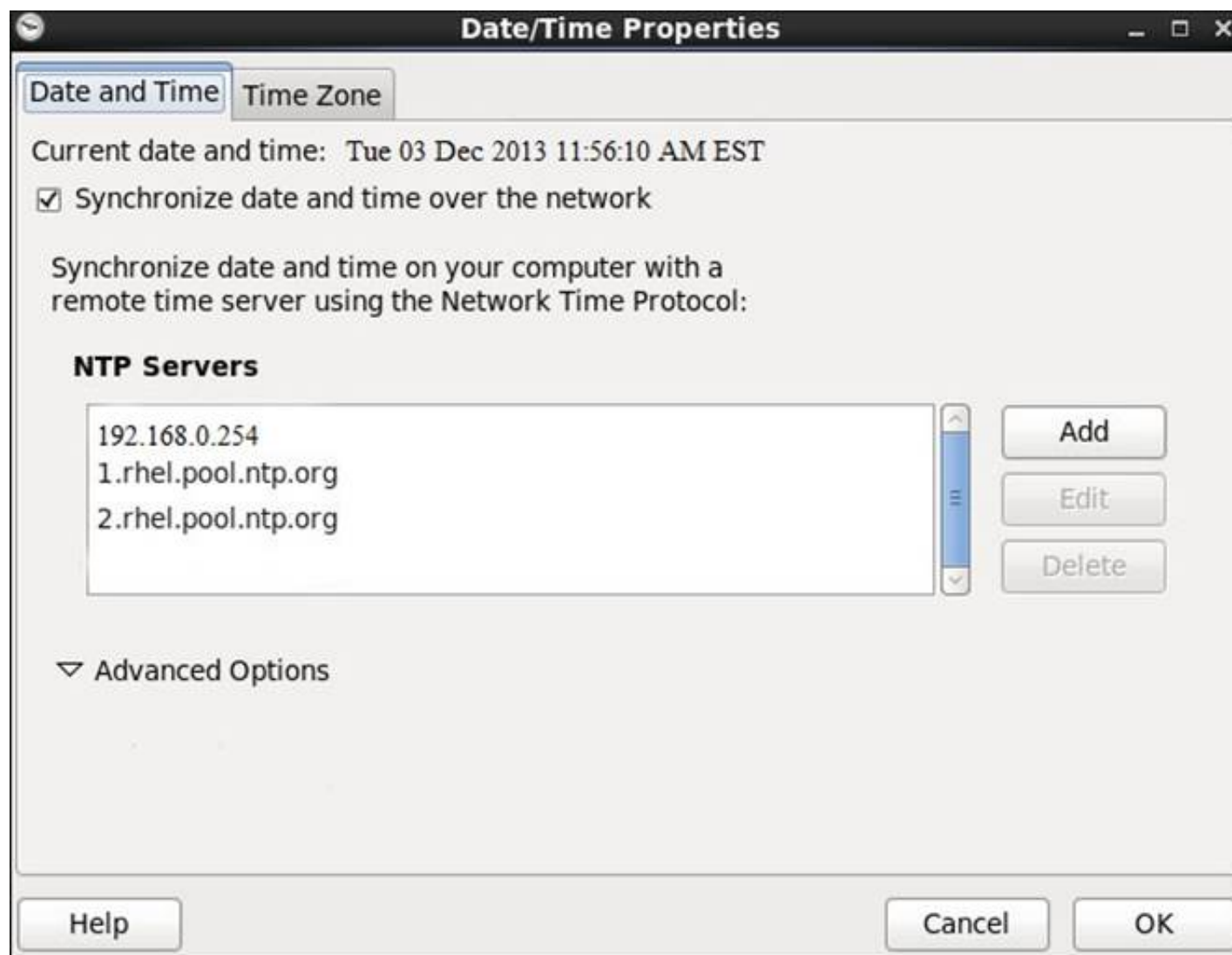
Configure the NTP service in your system.

- A. Mastered
- B. Not Mastered

Answer: A

Explanation:

system-config-date &



NEW QUESTION 37

CORRECT TEXT

Create a catalog under /home named admins. Its respective group is requested to be the admin group. The group users could read and write, while other users are not allowed to access it. The files created by users from the same group should also be the admin group.

- A. Mastered
- B. Not Mastered

Answer: A

Explanation:

```
# cd /home/  
# mkdir admins /  
# chown .admin admins/  
# chmod 770 admins/  
# chmod g+s admins/
```

NEW QUESTION 42

CORRECT TEXT

Create a user alex with a userid of 3400. The password for this user should be redhat.

- A. Mastered
- B. Not Mastered

Answer: A

Explanation:

```
? useradd -u 3400 alex  
? passwd alex  
? su -alex
```

NEW QUESTION 46

CORRECT TEXT

Configure a cron Task.

User natasha must configure a cron job, local time 14:23 runs and executes: */bin/echo hiya every day.

- A. Mastered
- B. Not Mastered

Answer: A

Explanation:

```
crontab -e -u natasha  
23 14/bin/echo hiya  
crontab -l -u natasha // view  
systemctlenable crond
```


systemctl restart crond

NEW QUESTION 49

CORRECT TEXT

Part 1 (on Node1 Server)

Task 2 [Installing and Updating Software Packages]

Configure your system to use this location as a default repository: <http://utility.domain15.example.com/BaseOS> <http://utility.domain15.example.com/AppStream>

Also configure your GPG key to use this location <http://utility.domain15.example.com/RPM-GPG-KEY-redhat-release>

- A. Mastered
- B. Not Mastered

Answer: A

Explanation:

```
* [root@node1 ~]# vim /etc/yum.repos.d/redhat.repo
[BaseOS]
name=BaseOS
baseurl=http://utility.domain15.example.com/BaseOS
enabled=1
gpgcheck=1
gpgkey=http://utility.domain15.example.com/RPM-GPG-KEY-redhat-release
[AppStream]
name=AppStream
baseurl=http://utility.domain15.example.com/AppStream
enabled=1
gpgcheck=1
gpgkey=http://utility.domain15.example.com/RPM-GPG-KEY-redhat-release
[root@node1 ~]# yum clean all
[root@node1 ~]# yum repolist
[root@node1 ~]# yum list all
```

NEW QUESTION 50

CORRECT TEXT

You have a domain named www.rhce.com associated IP address is 192.100.0.2. Configure the Apache web server by implementing the SSL for encryption communication.

- A. Mastered
- B. Not Mastered

Answer: A

Explanation:

```
? vi /etc/httpd/conf.d/ssl.conf <VirtualHost 192.100.0.2> ServerName www.rhce.com
DocumentRoot /var/www/rhce DirectoryIndex index.html index.htm ServerAdmin
webmaster@rhce.com SSLEngine on SSLCertificateFile
/etc/httpd/conf/ssl.crt/server.crt SSLCertificateKeyFile
/etc/httpd/conf/ssl.key/server.key </VirtualHost>
? cd /etc/httpd/conf
3 make testcert
? Create the directory and index page on specified path. (Index page can download from ftp://server1.example.com at exam time)
? service httpd start|restart
? chkconfig httpd on
Apache can provide encrypted communications using SSL (Secure Socket Layer). To make use of encrypted communication, a client must request to https
protocol, which is uses port 443. For HTTPS protocol required the certificate file and key file.
```

NEW QUESTION 55

CORRECT TEXT

User mary must configure a task.

Requirement: The local time at 14:23 every day echo "Hello World."

- A. Mastered
- B. Not Mastered

Answer: A

Explanation:

```
crontab -u mary -e
23 14 * * * echo "Hello World."
```

NEW QUESTION 57

CORRECT TEXT

Download <ftp://192.168.0.254/pub/boot.iso> to /root, and mounted automatically under /media/cdrom and which take effect automatically at boot-start.

- A. Mastered
- B. Not Mastered

Answer: A

Explanation:

```
# cd /root; wget ftp://192.168.0.254/pub/boot.iso
# mkdir -p /media/cdrom
# vim /etc/fstab
/root/boot.iso /media/cdrom iso9660 defaults,loop 0 0
# mount -a
mount [-t vfstype] [-o options] device dir
```

NEW QUESTION 61**CORRECT TEXT**

Configure the FTP service in your system, allow remote access to anonymous login and download the program by this service. Service is still running after system rebooting.

- A. Mastered
- B. Not Mastered

Answer: A

Explanation:

```
yum install vsftpd
/etc/init.d/vsftpd start
chkconfig vsftpd on
```

NEW QUESTION 65**CORRECT TEXT**

Find the rows that contain abcde from file /etc/testfile, and write it to the file/tmp/testfile, and the sequence is requested as the same as /etc/testfile.

- A. Mastered
- B. Not Mastered

Answer: A

Explanation:

```
# cat /etc/testfile | while read line;
do
echo $line | grep abcde | tee -a /tmp/testfile
done
OR
grep `abcde` /etc/testfile > /tmp/testfile
```

NEW QUESTION 70**CORRECT TEXT**

According the following requirements, configure autofs service and automatically mount to user's home directory in the ldap domain.

- Instructor.example.com (192.168.0.254) has shared /home/guests/ldapuserX home directory to your system by over NFS export, X is your hostname number.
- LdapuserX's home directory is exist in the instructor.example.com: /home/ guests/ldapuserX
- LdapuserX's home directory must be able to automatically mount to /home/ guests/ldapuserX in your system.
- Home directory have write permissions for the corresponding user.

However, you can log on to the ldapuser1 - ldapuser99 users after verification. But you can only get your corresponding ldapuser users. If your system's hostname is server1.example.com, you can only get ldapuser1's home directory.

- A. Mastered
- B. Not Mastered

Answer: A

Explanation:

```
mkdir -p /home/guests
cat /etc/auto.master:
/home/guests /etc/auto.ldap
cat /etc/auto.ldap:
ldapuser1 -rw instructor.example.com:/home/guests/ldapuser1
? automatically mount all the user's home directory #* -rw
instructor.example.com:/home/guests/&
```

NEW QUESTION 72**CORRECT TEXT**

Configure a task: plan to run echo hello command at 14:23 every day.

- A. Mastered
- B. Not Mastered

Answer: A

Explanation:

```
# which echo
# crontab -e
23 14 * * * /bin/echo hello
# crontab -l (Verify)
```

NEW QUESTION 74

CORRECT TEXT

Create User Account.

Create the following user, group and group membership:

Adminuser group

User natasha, using adminuser as a sub group

User Harry, also using adminuser as a sub group

User sarah, can not access the SHELL which is interactive in the system, and is not a member of adminuser, natashaharrysarah password is redhat.

A. Mastered

B. Not Mastered

Answer: A

Explanation:

groupadd adminuser

useradd natasha -G adminuser

useradd haryy -G adminuser

useradd sarah -s /sbin/nologin

Passwd user name // to modify password or echo redhat | passwd --stdin user name id natasha // to view user group.

NEW QUESTION 78

CORRECT TEXT

We are working on /data initially the size is 2GB. The /dev/test0/lvtestvolume is mount on

/data. Now you required more space on /data but you already added all disks belong to physical volume. You saw that you have unallocated space around 5 GB on your harddisk. Increase the size of lvtestvolume by 5GB.

A. Mastered

B. Not Mastered

Answer: A

Explanation:

? Create a partition having size 5 GB and change the systid '8e'.

? use partprobe command

? pvcreate /dev/hda9 Suppose your partition number is hda9.

? vgextend test0 /dev/hda9 vgextend command add the physical disk on volume group.

? lvextend -L+5120M /dev/test0/lvtestvolume

? verify using lvdisplay /dev/test0/lvtestvolume.

NEW QUESTION 79

CORRECT TEXT

SIMULATION

Add an additional swap partition of 754 MB to your system.

The swap partition should automatically mount when your system boots.

Do not remove or otherwise alter any existing swap partitions on your system.

A. Mastered

B. Not Mastered

Answer: A

Explanation:

? fdisk -l

? fdisk -cu /dev/vda

p n

e or p select e

default (first): enter

default (last): enter n

default(first): enter

default(first): +754M t (1-5)

l: 82 p

w #reboot

#mkswap /dev/vda5

? vim /etc/fstab

/dev/vda5 swap swap defaults 0 0

wq

? mount -a

? swapon -a

? swapon -s

NEW QUESTION 83

CORRECT TEXT

There are two different networks, 192.168.0.0/24 and 192.168.1.0/24. Your System is in 192.168.0.0/24 Network. One RHEL6 Installed System is going to use as a Router. All required configuration is already done on Linux Server. Where 192.168.0.254 and 192.168.1.254 IP Address are assigned on that Server. How will make successfully ping to 192.168.1.0/24 Network's Host?

A. Mastered

B. Not Mastered

Answer: A

Explanation:

```
? vi /etc/sysconfig/network GATEWAY=192.168.0.254
OR
vi /etc/sysconfig/network-scripts/ifcfg-eth0 DEVICE=eth0
BOOTPROTO=static
ONBOOT=yes
IPADDR=192.168.0.?
NETMASK=255.255.255.0
GATEWAY=192.168.0.254
? service network restart
```

Gateway defines the way to exit the packets. According to question System working as a router for two networks have IP Address 192.168.0.254 and 192.168.1.254.

NEW QUESTION 86

CORRECT TEXT

Part 1 (on Node1 Server)

Task 14 [Managing SELinux Security]

You will configure a web server running on your system serving content using a non- standard port (82)

- A. Mastered
- B. Not Mastered

Answer: A

Explanation:

```
*
[root@node1 ~]# curl http://node1.domain15.example.com
curl: (7) Failed to connect to node1.domain15.example.com port 80: Connection refused
[root@node1 ~]# yum install httpd
[root@node1 ~]# systemctl enable --now httpd
Created symlink /etc/systemd/system/multi-user.target.wants/httpd.service
/usr/lib/systemd/system/httpd.service.
[root@node1 ~]# systemctl start httpd
[root@node1 ~]# systemctl status httpd
Status: "Running, listening on: port 80"
*

[root@node1 ~]# wget http://node1.domain15.example.com
2021-03-23 13:27:28 ERROR 403: Forbidden.
[root@node1 ~]# semanage port -l | grep http
http_port_t tcp 80, 81, 443, 488, 8008, 8009, 8443, 9000
[root@node1 ~]# semanage port -a -t http_port_t -p tcp 82
[root@node1 ~]# semanage port -l | grep http
http_port_t tcp 82, 80, 81, 443, 488, 8008, 8009, 8443, 9000
[root@node1 ~]# firewall-cmd --zone=public --list-all
[root@node1 ~]# firewall-cmd --permanent --zone=public --add-port=82/tcp
[root@node1 ~]# firewall-cmd --reload
[root@node1 ~]# curl http://node1.domain15.example.com
OK
*

root@node1 ~]# wget http://node1.domain15.example.com:82
Connection refused.
[root@node1 ~]# vim /etc/httpd/conf/httpd.conf Listen 82
[root@node1 ~]# systemctl restart httpd
[root@node1 ~]# wget http://node1.domain15.example.com:82
2021-03-23 13:31:41 ERROR 403: Forbidden.
[root@node1 ~]# curl http://node1.domain15.example.com:82
OK
```

NEW QUESTION 87

CORRECT TEXT

A YUM repository has been provided at http://server.domain11.example.com/pub/x86_64/Server.

Configure your system to use this location as a default repository.

- A. Mastered
- B. Not Mastered

Answer: A

Explanation:

```
vim/etc/yum/repos/base.repo
[base]
name=base
baseurl= http://server.domain11.example.com/pub/x86_64/Server
gpgcheck=0
enable=1
Save and Exit
```

Use yum list for validation, the configuration is correct if list the package information. If the Yum configuration is not correct then maybe cannot answer the following questions.

NEW QUESTION 90

CORRECT TEXT

Part 2 (on Node2 Server)

Task 2 [Installing and Updating Software Packages]

Configure your system to use this location as a default repository: <http://utility.domain15.example.com/BaseOS>

<http://utility.domain15.example.com/AppStream>

Also configure your GPG key to use this location <http://utility.domain15.example.com/RPM-GPG-KEY-redhat-release>

- A. Mastered
- B. Not Mastered

Answer: A

Explanation:

```
[root@node1 ~]# vim /etc/yum.repos.d/redhat.repo
[BaseOS]
name=BaseOS
baseurl=http://utility.domain15.example.com/BaseOS
enabled=1
gpgcheck=1
gpgkey=http://utility.domain15.example.com/RPM-GPG-KEY-redhat-release
[AppStream]
name=AppStream
baseurl=http://utility.domain15.example.com/AppStream
enabled=1
gpgcheck=1
gpgkey=http://utility.domain15.example.com/RPM-GPG-KEY-redhat-release
[root@node1 ~]# yum clean all
[root@node1 ~]# yum repolist
repo id repo name
AppStream AppStream
BaseOS BaseOS
[root@node1 ~]# yum list all
```

NEW QUESTION 92

CORRECT TEXT

Set cronjob for user natasha to do /bin/echo hiya at 14:23.

- A. Mastered
- B. Not Mastered

Answer: A

Explanation:

```
# crontab -e -u natasha
23 14 * * * /bin/echo hiya
wq!
```

NEW QUESTION 93

CORRECT TEXT

Upgrade the kernel, start the new kernel by default. kernel download from this address: <ftp://server1.domain10.example.com/pub/update/new.kernel>

- A. Mastered
- B. Not Mastered

Answer: A

Explanation:

Download the new kernel file and then install it.

```
[root@desktop8 Desktop]# ls
kernel-2.6.32-71.7.1.el6.x86_64.rpm
kernel-firmware-2.6.32-71.7.1.el6.noarch.rpm
[root@desktop8 Desktop]# rpm -ivh kernel-*
Preparing... #####
[100%]
1:kernel-firmware
##### [ 50%]
2:kernel
##### [100%]
Verify the grub.conf file, whether use the new kernel as the default boot. [root@desktop8 Desktop]# cat /boot/grub/grub.conf default=0
title Red Hat Enterprise Linux Server (2.6.32-71.7.1.el6.x86_64)
root (hd0,0)
kernel /vmlinuz-2.6.32-71.7.1.el6.x86_64 ro root=/dev/mapper/vol0-root
rd_LVM_LV=vol0/root rd_NO_LUKS rd_NO_MD
rd_NO_DM LANG=en_US.UTF-8 SYSFONT=latarcyrheb-sun16 KEYBOARDTYPE=pc
KEYTABLE=us crashkernel=auto rhgb quiet
initrd /initramfs-2.6.32-71.7.1.el6.x86_64.img
```

NEW QUESTION 96

CORRECT TEXT

Configure autofs to make sure after login successfully, it has the home directory autofs, which is shared as /rhome/ldapuser40 at the ip: 172.24.40.10. and it also requires that, other ldap users can use the home directory normally.

- A. Mastered
- B. Not Mastered

Answer: A

Explanation:

```
# chkconfig autofs on
# cd /etc/
# vim /etc/auto.master
/rhome /etc/auto.ldap
# cp auto.misc auto.ldap
# vim auto.ldap
ldapuser40 -rw,soft,intr 172.24.40.10:/rhome/ldapuser40
* -rw,soft,intr 172.16.40.10:/rhome/&
# service autofs stop
# server autofs start
# showmount -e 172.24.40.10
# su - ldapuser40
```

NEW QUESTION 101

CORRECT TEXT

Part 2 (on Node2 Server)

Task 3 [Managing Logical Volumes]

Create a new volume group in the name of datavg and physical volume extent is 16 MB Create a new logical volume in the name of datalv with the size of 250 extents and file

system must xfs

Then the logical volume should be mounted automatically mounted under /data at system boot time

- A. Mastered
- B. Not Mastered

Answer: A

Explanation:

*

```
[root@node2 ~]# lsblk
NAME MAJ:MIN RM SIZE RO TYPE MOUNTPOINT
vdb 252:16 0 5G 0 disk
vdb1 252:17 0 4.2G 0 part
vgrz-lvrz 253:2 0 4.1G 0 lvm /datarz
vdc 252:32 0 5G 0 disk
vdd 252:48 0 5G 0 disk
vde 252:64 0 10G 0 disk
[root@node2 ~]# parted /dev/vdc mklabel msdos
[root@node2 ~]# parted /dev/vdc mkpart primary 1MiB 4200MiB
[root@node2 ~]# parted /dev/vdc set 1 lvm on
*

[root@node2 ~]# udevadm settle
[root@node2 ~]# pvcreate /dev/vdc1
Physical volume "/dev/vdc1" successfully created.
[root@node2 ~]# vgcreate -s 16M datavg /dev/vdc1
Volume group "datavg" successfully created
[root@node2 ~]# lvcreate -n datalv -L 4000M datavg
Logical volume "datalv" created.
[root@node2 ~]# mkfs.xfs /dev/datavg/datalv
[root@node2 ~]# mkdir /data
[root@node2 ~]# blkid
/dev/mapper/datavg-datalv: UUID="7397a292-d67d-4632-941e-382e2bd922ce"
BLOCK_SIZE="512" TYPE="xfs"
*

[root@node2 ~]# vim /etc/fstab
UUID=7397a292-d67d-4632-941e-382e2bd922ce /data xfs defaults 0 0
[root@node2 ~]# mount UUID=7397a292-d67d-4632-941e-382e2bd922ce /data
[root@node2 ~]# reboot
[root@node2 ~]# df -hT
Filesystem Type Size Used Avail Use% Mounted on
/dev/mapper/datavg-datalv xfs 3.9G 61M 3.9G 2% /data
```

NEW QUESTION 104

CORRECT TEXT

Configure a user account.

Create a user iaruid is 3400. Password is redhat

- A. Mastered
- B. Not Mastered

Answer: A

Explanation:

```
useradd -u 3400 iar
passwd iar
```

NEW QUESTION 107

CORRECT TEXT

Who ever creates the files/directories on a data group owner should automatically be in the same group owner as data.

- A. Mastered
- B. Not Mastered

Answer: A

Explanation:

* 1. chmod g+s /data

* 2. Verify using: ls -ld /data

Permission should be like this: drwxrws--- 2 root sysadmin 4096 Mar 16 18:08 /data

If SGID bit is set on directory then who every users creates the files on directory group owner automatically the owner of parent directory. To set the SGID bit:

chmod g+s directory To Remove the SGID bit: chmod g-s directory

NEW QUESTION 109

CORRECT TEXT

You are new System Administrator and from now you are going to handle the system and your main task is Network monitoring, Backup and Restore. But you don't know the root password. Change the root password to redhat and login in default Runlevel.

- A. Mastered
- B. Not Mastered

Answer: A

Explanation:

When you Boot the System, it starts on default Runlevel specified in /etc/inittab: Id?:initdefault:

When System Successfully boot, it will ask for username and password. But you don't know the root's password. To change the root password you need to boot the system into single user mode. You can pass the kernel arguments from the boot loader.

* 1. Restart the System.

* 2. You will get the boot loader GRUB screen.

* 3. Press a and type 1 or s for single mode ro root=LABEL=/ rhgb quiet s

* 4. System will boot on Single User mode.

* 5. Use passwd command to change.

* 6. Press ctrl+d

NEW QUESTION 111

CORRECT TEXT

Search files.

Find out files owned by jack, and copy them to directory /root/findresults

- A. Mastered
- B. Not Mastered

Answer: A

Explanation:

mkdir /root/findfiles

find / -user jack -exec cp -a {} /root/findfiles/ \; ls /root/findresults

NEW QUESTION 116

CORRECT TEXT

Adjust the size of the Logical Volume.

Adjust the size of the vo Logical Volume, its file system size should be 290M. Make sure that the content of this system is complete.

Note: the partition size is rarely accurate to the same size as required, so in the range 270M to 320M is acceptable.

- A. Mastered
- B. Not Mastered

Answer: A

Explanation:

Addition

df -hT

lvextend -L +100M /dev/vg0/vo

Lvscan

xfs_growfs /home/ //home is the mounted directory of the LVM, this step just need to do in the practice environment, and test EXT4 does not need this step.

resize2fs /dev/vg0/vo// use this command to update in examination.

df -hT

OR

Subtraction

e2fsck -f/dev/vg0/vo

umount /home

resize2fs /dev/vg0/vo // the final required partition capacity is 100M lvreduce -l 100M

```
/dev/vg0/vo
mount /dev/vg0/vo/home
df -hT
```

NEW QUESTION 118

CORRECT TEXT

SELinux must be running in the Enforcing mode.

- A. Mastered
- B. Not Mastered

Answer: A

Explanation:

```
getenforce // Check the current mode of SELinux // SELinux runs in enforcing mode // Check
getenforce 1
getenforce
vim /etc/selinux/config selinux=enforcing // To temporarily enable SELinux
wg
sestatus
```

NEW QUESTION 122

CORRECT TEXT

Configure your NFS services. Share the directory by the NFS Shared services.

- A. Mastered
- B. Not Mastered

Answer: A

Explanation:

```
/etc/init.d/rpcbind start
/etc/init.d/nfslock start
/etc/init.d/nfs start
chkconfig rpcbind on
chkconfig nfslock on
chkconfig nfs on
showmount -e localhost
```

NEW QUESTION 125

CORRECT TEXT

Your System is going use as a router for 172.24.0.0/16 and 172.25.0.0/16. Enable the IP Forwarding.

- * 1. echo "1" >/proc/sys/net/ipv4/ip_forward
- * 2. vi /etc/sysctl.conf net.ipv4.ip_forward=1

- A. Mastered
- B. Not Mastered

Answer: A

Explanation:

/proc is the virtual filesystem, containing the information about the running kernel.
To change the parameter of running kernel you should modify on /proc. From Next reboot the system, kernel will take the value from /etc/sysctl.conf.

NEW QUESTION 126

CORRECT TEXT

Copy /etc/fstab to /var/tmp name admin, the user1 could read, write and modify it, while user2 without any permission.

- A. Mastered
- B. Not Mastered

Answer: A

Explanation:

```
# cp /etc/fstab /var/tmp/
# chgrp admin /var/tmp/fstab
# setfacl -m u:user1:rwX /var/tmp/fstab
# setfacl -m u:user2:--- /var/tmp/fstab
# ls -l
-rw-rw-r--+ 1 root admin 685 Nov 10 15:29 /var/tmp/fstab
```

NEW QUESTION 129

.....

Thank You for Trying Our Product

We offer two products:

1st - We have Practice Tests Software with Actual Exam Questions

2nd - Questons and Answers in PDF Format

EX200 Practice Exam Features:

- * EX200 Questions and Answers Updated Frequently
- * EX200 Practice Questions Verified by Expert Senior Certified Staff
- * EX200 Most Realistic Questions that Guarantee you a Pass on Your FirstTry
- * EX200 Practice Test Questions in Multiple Choice Formats and Updatesfor 1 Year

100% Actual & Verified — Instant Download, Please Click
[Order The EX200 Practice Test Here](#)