

# Cisco

## Exam Questions 300-420

Designing Cisco Enterprise Networks (ENSLD)



#### NEW QUESTION 1

What are two valid scaling techniques when an EIGRP network is designed that consists of more than 1000 routers? (Choose two.)

- A. Use structured hierarchical topology with route summarization
- B. Used sub-second timers
- C. Use the distribute-list command to filter routes
- D. Modify delay parameters on the links
- E. Implement multiple EIGRP autonomous systems

**Answer:** AE

#### NEW QUESTION 2

An engineer is working with NETCONF and Cisco NX-OS based devices. The engineer needs a YANG model that supports a specific feature relevant only to Cisco NX-OS. Which model must the engineer choose?

- A. Native
- B. IEEE
- C. OpenConfig
- D. IETF

**Answer:** D

#### NEW QUESTION 3

What is an advantage of designing an out-of-band network management solution?

- A. In the event of a production network outage, network devices can still be managed.
- B. There is no separation between the production network and the management network.
- C. In the event of a production network outage, it can be used as a backup network path.
- D. It is less expensive than an in-band management solution

**Answer:** A

#### NEW QUESTION 4

Which OSPF area blocks LSA Type 3, 4 and 5, but allows a default summary route?

- A. normal
- B. stub
- C. NSSA
- D. totally stubby

**Answer:** D

#### NEW QUESTION 5

An engineer is designing a QoS policy that queues excess packets for later transmission. Which mechanism must be included in the design?

- A. shaping
- B. WRED
- C. policing
- D. RED

**Answer:** A

#### NEW QUESTION 6

When a first hop redundancy solution is designed, which protocol ensures that load balancing occurs over multiple routers using a single virtual IP address and multiple virtual MAC addresses?

- A. GLBP
- B. IRDP
- C. VRRP
- D. HSRP

**Answer:** A

#### NEW QUESTION 7

What is one function of the vSmart controller in an SD-WAN deployment?

- A. orchestrates vEdge and cEdge connectivity
- B. responsible for the centralized control plane of the SD-WAN network
- C. provides centralized network management and a GUI to monitor and operate the SD-WAN overlay
- D. provides a data-plane at branch offices to pass traffic through the SD-WAN network

**Answer:** B

**NEW QUESTION 8**

A network engineer must connect two sites across a public network using a secure tunneling technology that supports multicast traffic. Which technology must be chosen?

- A. IPsec
- B. GRE
- C. PPTP
- D. GRE over IPsec

**Answer: D**

**NEW QUESTION 9**

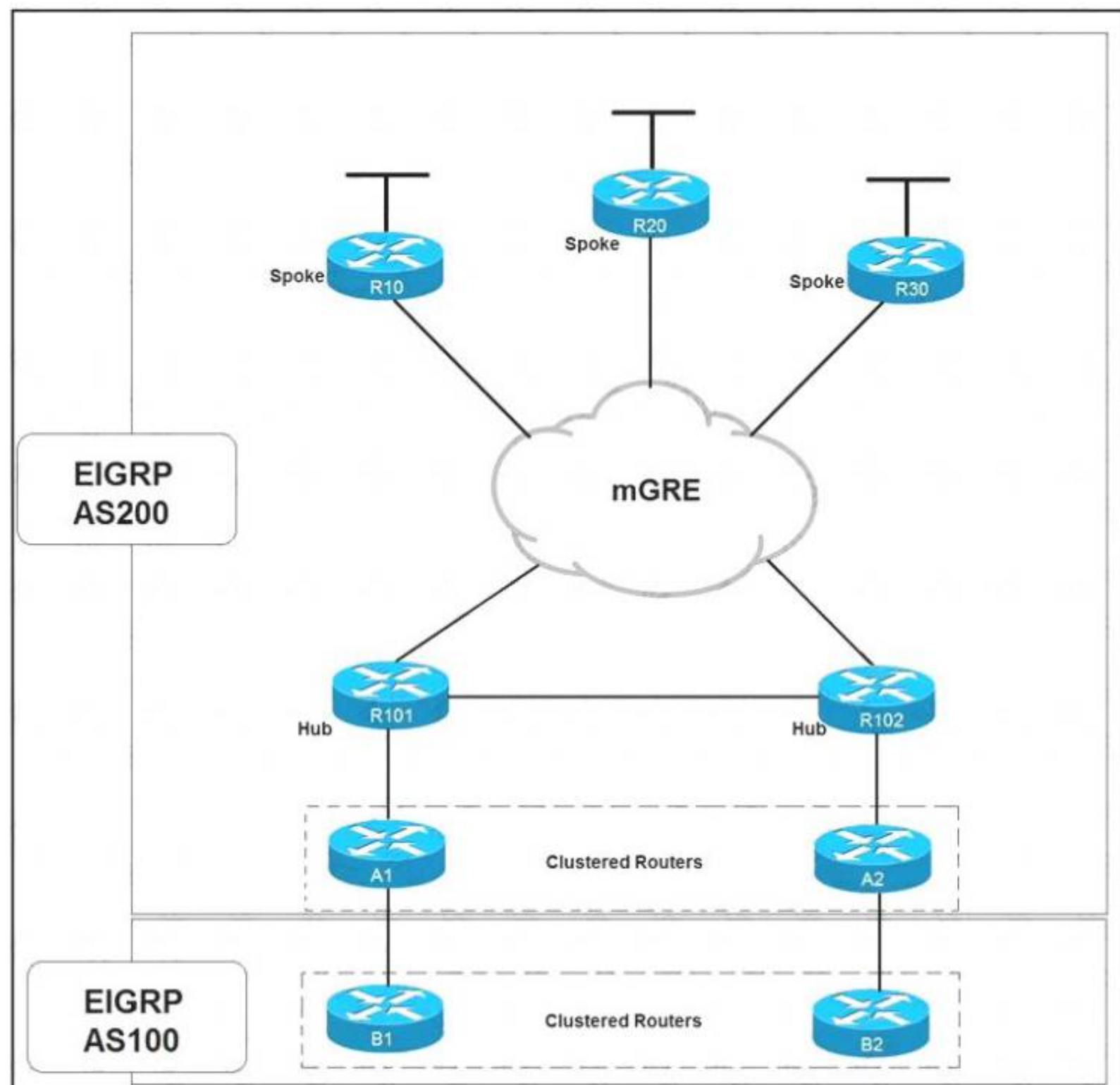
When designing interdomain multicast, which two protocols are deployed to achieve communication between multicast sources and receivers? (Choose two.)

- A. IGMPv2
- B. BIDIR-PIM
- C. MP-BGP
- D. MSDP
- E. MLD

**Answer: CD**

**NEW QUESTION 10**

Refer to the exhibit.



Which solution decreases the EIGRP convergence time?

- A. Enable subsecond timers
- B. Increase the hold time value
- C. Increase the dead timer value
- D. Enable stub routing on the spokes

**Answer: D**

**NEW QUESTION 10**

When a network is designed using IS-IS protocol, which two circuit types are supported? (Choose two.)

- A. nonbroadcast multiaccess
- B. multiaccess
- C. point-to-multipoint
- D. nonbroadcast
- E. point-to-point

**Answer:** BE

#### NEW QUESTION 14

Which function are fabric intermediate nodes responsible for in an SD-Access Architecture?

- A. mapping EIDs to RLOCs
- B. encapsulating user traffic in a VXLAN header including the SGT
- C. registering new endpoints in the HTDB
- D. transporting IP packets between edge nodes and border nodes

**Answer:** D

#### NEW QUESTION 16

Which design consideration should be observed when EIGRP is configured on Data Center switches?

- A. Perform manual summarization on all Layer 3 interfaces to minimize the size of the routing table.
- B. Prevent unnecessary EIGRP neighborships from forming across switch virtual interfaces.
- C. Lower EIGRP hello and hold timers to their minimum settings to ensure rapid route reconvergence.
- D. Configure multiple EIGRP autonomous systems to segment Data Center services and applications.

**Answer:** A

#### NEW QUESTION 21

A customer with an IPv4 only network topology wants to enable IPv6 connectivity while preserving the IPv4 topology services. The customer plans to migrate IPv4 services to the IPv6 topology, then decommission the IPv4 topology. Which topology supports these requirements?

- A. dual stack
- B. 6VPE
- C. 6to4
- D. NAT64

**Answer:** A

#### NEW QUESTION 25

Company A recently acquired another company. Users of the newly acquired company must be able to access a server that exists on Company A's network, both companies use overlapping IP address ranges. Which action conserves IP address space and provides access to the server?

- A. Use a single IP address to create overload NAT
- B. Use a single IP address to create a static NAT entry
- C. Build one-to-one NAT translation for every user that needs access
- D. Re-IP overlapping address space in the acquired company

**Answer:** A

#### NEW QUESTION 29

A customer is discussing QoS requirements with a network consultant. The customer has specified that endto- end path verification is a requirement. Which QoS solution meets this requirement?

- A. IntServ model with RSVP to support the traffic flows
- B. DiffServ model with PHB to support the traffic flows
- C. marking traffic at the access layer with DSCP to support the traffic flows
- D. marking traffic at the access layer with CoS to support the traffic flows

**Answer:** A

#### NEW QUESTION 30

An engineer is working with NETCONF and Cisco NX-OS based devices. The engineer needs a YANG model that supports a specific feature relevant only to Cisco NX-OS. Which model must the engineer choose?

- A. Native
- B. IEEE
- C. OpenConfig
- D. IETF

**Answer:** D

#### NEW QUESTION 31

An engineer is looking for a standards-driven YANG model to manage a multivendor network environment. Which model must the engineer choose?

- A. Native
- B. OpenConfig
- C. IETF
- D. IEEE NETCONF

**Answer:** C

**NEW QUESTION 32**

Which two BGP features will result in successful route exchanges between eBGP neighbors sharing the same AS number? (Choose two.)

- A. advertise-best-external
- B. bestpath as-path ignore
- C. client-to-client reflection
- D. as-override
- E. allow-as-in

**Answer:** DE

**NEW QUESTION 33**

A network solution is being designed for a company that connects to multiple Internet service providers. Which Cisco proprietary BGP path attribute will influence outbound traffic flow?

- A. Local Preference
- B. MED
- C. Weight
- D. AS Path
- E. Community

**Answer:** C

**NEW QUESTION 37**

An engineer is designing an enterprise campus network. The LAN infrastructure consists of switches from multiple vendors, and Spanning Tree must be used as a Layer 2 loop prevention mechanism. All configured VLANs must be grouped in two SIP instances. Which standards-based Spanning Tree technology supports this design solution?

- A. MSTP
- B. RSTP
- C. Rapid PVST
- D. STP

**Answer:** A

**NEW QUESTION 41**

.....

## Thank You for Trying Our Product

### We offer two products:

1st - We have Practice Tests Software with Actual Exam Questions

2nd - Questions and Answers in PDF Format

### 300-420 Practice Exam Features:

- \* 300-420 Questions and Answers Updated Frequently
- \* 300-420 Practice Questions Verified by Expert Senior Certified Staff
- \* 300-420 Most Realistic Questions that Guarantee you a Pass on Your First Try
- \* 300-420 Practice Test Questions in Multiple Choice Formats and Updates for 1 Year

**100% Actual & Verified — Instant Download, Please Click**  
**[Order The 300-420 Practice Test Here](#)**