

HPE6-A73 Dumps

Aruba Certified Switching Professional Exam

<https://www.certleader.com/HPE6-A73-dumps.html>



NEW QUESTION 1

What is correct regarding multicasting and AOS-CX switches?

- A. IGMP snooping is disabled, by default, on Layer-2 VLAN interfaces
- B. IGMP query functions are enabled, by default, on Layer-2 VLAN interfaces
- C. IGMP snooping is enabled, by default, on Layer-3 VLAN interfaces
- D. IGMP-enabled AOS-CX switches flood unknown multicast destinations

Answer: A

NEW QUESTION 2

An administrator of a company has concerns about upgrading the access layer switches. The users rely heavily on wireless and VoIP telephony. Which is the best recommendation to ensure a short downtime for the users during upgrading the access layer switches?

- A. Install the in-service software upgrade (ISSU) feature with clustering enabled
- B. Install AOS-CX 6300 or 6400 switches with always-on POE
- C. Implement VSF on the AOS-CX access switches
- D. Implement VSX on the AOS-CX access switches

Answer: C

NEW QUESTION 3

A company is implementing a new wireless design and needs it to support high availability, even during times of switch system upgrades. The solution will involve Aruba Mobility Controller (MC) and Aruba AP connections requiring POE. Which campus AOS-CX switch solution and virtual switching should the company implement at the campus access layer?

- A. AOS-CX 6400 and VSX
- B. AOS-CX 6300 and VSF
- C. AOS-CX 8325 and VSF
- D. AOS-CX 8400 and VSX

Answer: B

NEW QUESTION 4

An administrator wants to drop traffic from VLAN 6 (10.1.6.0/24) to VLAN 5 (10.1.5.0/24), but allow all other traffic. What is correct configuration to accomplish this?

- A.
- ```
class ip VLAN5
 10 match ip 10.1.6.0/24 10.1.5.0/24
exit
policy VLAN5
 10 class ip VLAN5 action drop
exit
interface vlan 5
 apply access-list ip VLAN5 in
```
- B.
- ```
access-list ip VLAN5
 10 permit ip 10.1.6.0/0.0.0.255 10.1.5.0/0.0.0.255
 20 permit ip any any
exit
interface vlan 5
  apply access-list ip
  VLAN5 in
exit
```
- C.
- ```
access-list ip VLAN5
 10 deny ip 10.1.6.0/24 10.1.5.0/24
 20 permit ip any any
exit
interface vlan 5
 apply access-list ip VLAN5 in
exit
```
- D.
- ```
class ip VLAN5
 10 match ip 10.1.6.0/24 10.1.5.0/24
exit
policy VLAN5
 10 class ip VLAN5 action drop
exit
vlan 5
  apply policy VLAN5 in
```

- A. Option A
B. Option B
C. Option C
D. Option D

Answer: C

NEW QUESTION 5

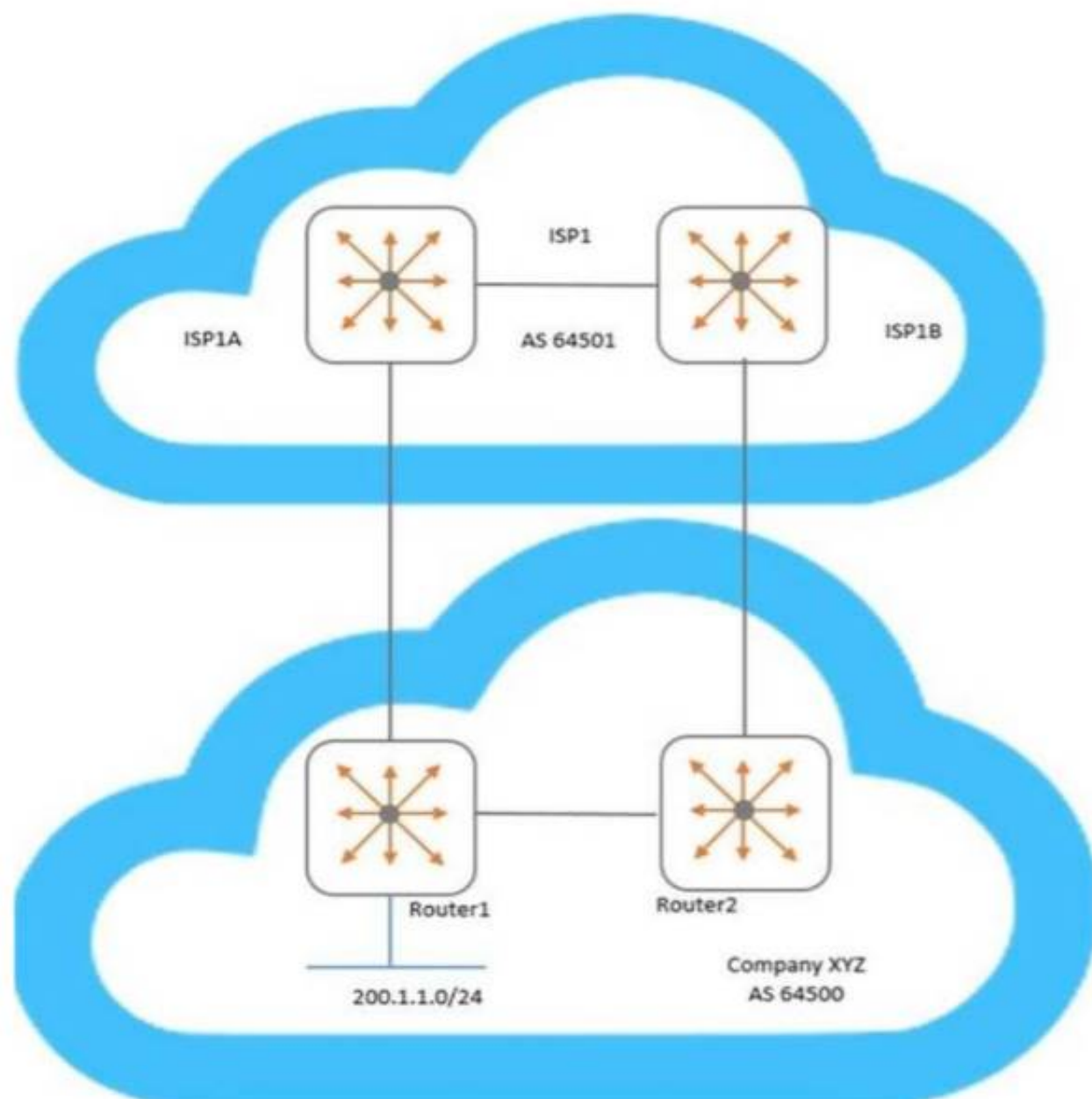
A network administrator is attempting to troubleshoot a connectivity issue between a group of users and a particular server. The administrator needs to examine the packets over a period of time from their desktop; however, the administrator is not directly connected to the AOS-CX switch involved with the traffic flow. What is correct regarding the ERSPAN session that needs to be established on an AOS-CX switch? (Choose two.)

- A. On the source AOS-CX switch, the destination specified is the switch to which the administrator's desktop is connected
B. On the source AOS-CX switch, the destination specified is the administrator's desktop
C. The encapsulation protocol used is GRE
D. The encapsulation protocol used is VXLAN
E. The encapsulation protocol is UDP

Answer: AC

NEW QUESTION 6

Examine the network topology.



Company XYZ has two connections to a service provider (ISP1). Here is the configuration of Router1:

```
Router1(config)# ip prefix-list AS64500-routes permit 200.1.1.0/24
Router1(config)# route-map To-AS64501 permit seq 10
Router1(config-route-map)# match ip address prefix-list AS64500-routes
Router1(config-route-map)# set metric 100
Router1(config-route-map)# exit
Router1(config)# router bgp 64500
Router1(config-bgp)# address-family ipv4 unicast
Router1(config-bgp-ipv4-uc)# neighbor 192.168.1.1 route-map To-AS64501 out
```

Here is the configuration of Router2:

```
Router2(config)# ip prefix-list AS64500-routes permit 200.1.1.0/24
Router2(config)# route-map To-AS64501 permit seq 10
Router2(config-route-map)# match ip address prefix-list AS64500-routes
Router2(config-route-map)# set metric 200
Router2(config-route-map)# exit
Router2(config)# router bgp 64500
Router2(config-bgp)# address-family ipv4 unicast
Router2(config-bgp-ipv4-uc)# neighbor 192.168.2.1 route-map To-AS64501 out
```

Based on configuration of Router1 and Router2, which BGP metric is being manipulated?

- A. Weight
- B. Multiple exit discriminator
- C. Local preference
- D. AS path length

Answer: B

NEW QUESTION 7

An administrator in a company of 349 users has a pair of AOS-CX switches with connections to external networks. Both switches are configured for OSPF. The administrator wants to import external routes on both switches, but assigns different seed metrics to the routes, as well as imports them as external type-1 routes. What is the best way for the administrator to accomplish this?

- A. Create a route map with the correct route type and metrics
- B. Define the route type and metrics in the OSPF process
- C. Create a classifier policy with the correct route type and metrics
- D. Define a class and policy map with the correct route type and metrics

Answer: A

NEW QUESTION 8

A company has just purchased AOS-CX switches. The company has a free and open-source AAA solution. The company wants to implement access control on the Ethernet ports of the AOS-CX switches.

Which security features can the company implement given the equipment that they are using?

- A. Port-based tunneling
- B. Device fingerprinting
- C. Local user roles
- D. Downloadable user roles

Answer: D

NEW QUESTION 9

A company uses NetEdit to manage a network of 700 AOS-CX switches and approximately 1,000 other SNMP-capable devices.

Which management solution should the company use to monitor all the devices, as well as see a topology picture of how all the devices are connected together?

- A. NetEdit
- B. Aruba AirWave
- C. Aruba Activate
- D. Network Analysis Engine (NAE)

Answer: A

NEW QUESTION 10

A company has recently upgraded their campus switching infrastructure with AOS-CX switches. They have implemented 802.1X authentication on access ports where laptop and IOT devices typically connect. An administrator has noticed that for POE devices, the AOS-CX switch ports are delivering the maximum wattage to the port instead of what the device actually needs.

Concerned about this waste of electricity, what should the administrator implement to solve this problem?

- A. Implement a classifier policy with the correct power definitions
- B. Create device profiles with the correct power definitions
- C. Enable AAA authentication to exempt LLDP and/or CDP information
- D. Globally enable the QoS trust setting for LLDP and/or CDP

Answer: B

NEW QUESTION 10

How is voice traffic prioritized correctly on AOS-CX switches?

- A. By defining device profiles with QOS settings
- B. By placing it in the strict priority queue
- C. By implementing voice VLANs
- D. By implementing weighted fair queueing (WFQ)

Answer: B

NEW QUESTION 11

Which AOS-CX feature is used to prevent head-on-line (HOL) blocking?

- A. VSF
- B. WFQ
- C. VOQ
- D. VSX

Answer: C

NEW QUESTION 15

How should a network administrator add NAE scripts and implement NAE agents that will run on an AOS-CX switch?

- A. Use the web interface of the NetEdit server
- B. Use the web interface of the AOS-CX switch
- C. Use the web interface of Aruba Central
- D. Use the CLI of the AOS-CX switch

Answer: B

NEW QUESTION 16

Examine the partial output of the BGP routing table of an AOS-CX switch:

Switch# show bgp

<-output omitted->

Network	Nexthop	Metric	LocPrf	Weight	Path
* e 1.0.0.0/8	192.168.1.5	0	100	0	100 ?
* e 1.0.0.0/8	192.168.2.5	0	100	0	200 100 i
* e 1.0.0.0/8	192.168.3.5	0	200	20	300 400 100 ?
* e 1.0.0.0/8	192.168.4.5	0	50	0	400 200 100 i

The switch is learning about four possible path to reach the 1.0.0.0/8 network. Based on this output, which next-hop route will the AOS-CX select to be placed in the IP routing table?

- A. 192 168 1 5
- B. 192 168 2 5
- C. 192 168 3 5
- D. 192 168 4 5

Answer: C

NEW QUESTION 21

When implementing user-based tunneling on an AOS-CX switch, which component defines the primary and backup Aruba gateways?

- A. Transit VLAN
- B. Gateway role
- C. Server group
- D. Zone

Answer: D

NEW QUESTION 24

A company requires access by all users, guests, and employees to be authenticated. Employees will be authenticated using 802.1X, whereas guests will be authenticated using captive portal. Which type of authentication must be configured on an AOS-CX switch ports where both guests and employees connect?

- A. Both 802.1X and captive portal
- B. 802.1X only
- C. Both 802.1X and MAC-Auth
- D. 802.1X, captive portal, and MAC-Auth

Answer: C

NEW QUESTION 27

What is correct regarding rate limiting and egress queue shaping on AOS-CX switches?

- A. Only a traffic rate and burst size can be defined for a queue
- B. Limits can be defined only for broadcast and multicast traffic
- C. Rate limiting and egress queue shaping can be used to restrict inbound traffic
- D. Rate limiting and egress queue shaping can be applied globally

Answer: A

NEW QUESTION 31

The company has just upgraded their access layer switches with AOS-CX switches and implemented an AAA solution with ClearPass. The company has become concerned about what actually connects to the user ports on the access layer switch, Therefore, the company is implementing 802.1X authentication on the AOS-CX switches. An administrator has globally enabled 802.1X, and has enabled it on all the access ports connected to user devices, including VoIP phones, security cameras, and wireless Aruba IAPs. Wireless users are complaining that they successfully authenticate to the IAPs; however, they do not have access to network resources. Previously, this worked before 802.1X was implemented on the AOS-CX switches.

What should the company do to solve this problem?

- A. Implement device-based mode on the IAP-connected AOS-CX switch ports.
- B. Implement local user roles and local forwarding on the AOS-CX switches.
- C. Implement downloadable user roles and user-based tunneling (UBT) on the AOS-CX switches.
- D. Implement AAA RADIUS change of authorization on the AOS-CX switches.

Answer: C

NEW QUESTION 36

What is correct regarding the operation of VSX and multicasting with PIM-SM routing configured?

- A. Each VSX peers runs PIM and builds its own group databas
- B. One of the VSX peers is elected as the designated router (DR) to forward multicast streams to a receiver VLAN
- C. Each VSX peers runs PIM and creates a shared group databas
- D. Both VSX peers can forward multicast streams to receivers in a VLAN, achieving load sharing

- E. Each VSX peers runs PIM and builds its own group databas
- F. Both VSX peers can forward multicast streams to receivers in a VLAN, achieving load sharing
- G. Each VSX peers runs PIM and creates a shared group databas
- H. One of the VSX peers is elected as the designated router (DR) to forward multicast streams to a receiver VLAN

Answer: A

NEW QUESTION 40

Examine the AOS-CS switch output:

```
Switch# show aaa authentication port-access interface 1/1/1 client-status
```

Port Access Client Status Details

```
Client 00:50:56:b1:7a:37, icx-employee
```

Session Details

```
Port      : 1/1/3
Session Time : 31273s
```

Authentication Details

```
Status      : dot1x Authenticated
Auth Precedence : dot1x - Authenticated, mac-auth - Not attempted
```

Authorization Details

```
Role       : aruba_contractor-3044-7
Status     : Applied
```

Based on this output, what is correct?

- A. 802.1X authentication was successful, but MAC authentication is yet to start
- B. 802.1X authentication occurred and downloadable user roles are deployed
- C. A local user role was deployed using a ClearPass solution
- D. Only 802.1X authentication is configured on the port

Answer: B

NEW QUESTION 44

.....

Thank You for Trying Our Product

* 100% Pass or Money Back

All our products come with a 90-day Money Back Guarantee.

* One year free update

You can enjoy free update one year. 24x7 online support.

* Trusted by Millions

We currently serve more than 30,000,000 customers.

* Shop Securely

All transactions are protected by VeriSign!

100% Pass Your HPE6-A73 Exam with Our Prep Materials Via below:

<https://www.certleader.com/HPE6-A73-dumps.html>