

Exam Questions 350-601

Implementing and Operating Cisco Data Center Core Technologies

<https://www.2passeasy.com/dumps/350-601/>



NEW QUESTION 1

Which product includes prebuilt templates that can be used to customize fabric deployments?

- A. Cisco ACI
- B. Cisco UCS Manger
- C. Cisco data Center Network Manger
- D. Cisco Tetration

Answer: C

Explanation:

<https://www.cisco.com/c/en/us/products/collateral/cloud-systems-management/prime-data-center-networkmanag>

https://www.cisco.com/c/en/us/td/docs/switches/datacenter/sw/11_2_1/config_guide/lanfabric/b_dcnm_fabric_lan/template_usage.html

NEW QUESTION 2

A network administrator must configure an extra keyring in Cisco UCS Manager. The key must provide a high level of encryption and secure authentication when users use the web interface. Which configuration command set must be applied to meet these requirements?

☐ **set https keyring kring7984**
set https cipher-suite-mode secure
set https ssl-protocol tls1-2
commit-buffer

☐ **set https keyring kring7984**
set https cipher-suite-mode secure
set https tls-protocol tls1-2
commit-buffer

☐ **set https keyring kring7984**
set https cipher-suite-mode high
set https ssl-protocol tls1-2#
commit-buffer

☐ **set https keyring kring7984**
set https cipher-suite-mode high
set https tls-protocol tls1-2
commit-buffer

- A. Option A
- B. Option B
- C. Option C
- D. Option D

Answer: C

Explanation:

https://www.cisco.com/c/en/us/td/docs/unified_computing/ucs/ucs-manager/CLI-User-Guides/Admin-Managem “cipher-suite-mode secure” is invalid command. “Cipher-suite-mode high” is valid command. “tls-protocol tls1-2” is invalid command. “Ssl-protocol tls1-2” is valid command.

```
UCS-A# scope system
```

```
UCS-A /system # scope services
```

```
UCS-A /system/services # enable https
```

```
UCS-A /system/services* # set https port 443
```

Warning: When committed, this closes all the web sessions.

```
UCS-A /system/services* # set https keyring kring7984
```

```
UCS-A /system/services* # set https cipher-suite-mode high
```

```
UCS-A /system/services* # set https ssl-protocol tls1-2
```

```
UCS-A /system/services* # commit-buffer
```

```
UCS-A /system/services #
```

NEW QUESTION 3

A company plans to migrate some of its services to the cloud. The company does not want to manage or control the underlying cloud infrastructure. It also wants to maintain control over the deployment of its applications and configuration settings of the application-hosting environment. Which cloud service model meets these requirements?

- A. Infrastructure as a Service
- B. Function as a Service
- C. Platform as a Service
- D. Software as a Service

Answer: C

NEW QUESTION 4

An engineer must configure HSRP protocol on two Cisco Nexus 9000 Series Switches running a virtual port channel. In addition, the HSRP implementation must meet these requirements:

- It must allow more than 500 groups.
- switch 1 must act as the primary switch.
- Both switches must use a user-defined hardware address.

Drag and drop the commands from the right to complete a configuration of the HSRP on the left. The commands are used more than once. Not all commands are used.

```
! switch1

interface vlan300
ip 209.165.200.226/27
hsrp 300

[ ]

[ ]

ip 209.165.200.225
[ ]

! switch2

interface vlan300
ip 209.165.200.227/27
hsrp 300

[ ]

[ ]

ip 209.165.200.225
[ ]
```

mac-address 6000.6000.6000

hsrp version 1

priority 255

hsrp use-bia

priority 100

hsrp version 2

- A. Mastered
- B. Not Mastered

Answer: A

Explanation:

Switch 1:

Box 1 = hsrp version 2

Box 2 = priority 100

Box 3 = mac-address 6000.6000.6000

Switch 2:

Box 1 = hsrp version 2

Box 2 = priority 255

Box 3 = mac-address 6000.6000.6000

NEW QUESTION 5

An engineer must configure a Cisco UCS domain for monitoring and management by the Cisco Intersight SaaS platform. After the setup is complete, administrators must have full control to configure the device through Cisco UCS Manager and Intersight. Which set of actions accomplishes this task?

- A. Configure Device Connector Access Mode as Allow Control in Device Console Claim the device on Intersight as UCSM Managed Mode.
- B. Configure Device Connector Access Mode as Allow Control in Cisco UCS Manager Claim the device on intersightc as Intersight Managed Mode
- C. Configure Device Connector Access Moao as Allow Control in Device Consol
- D. Claim the device on intersight as Intersight Managed Mode
- E. Configure Device Connector Access Mode as Allow Control in Cisco UCS Manager Claim the device on intersight as UCSM Managed Mode
- F. Option A
- G. Option B
- H. Option C
- I. Option D

Answer: C

NEW QUESTION 6

An engineer deploys a custom Guest Shell rootfs on a Nexus 9000 Series Switch. Drag and drop the steps from the left into the order required to deploy the solution on the right. Not all options are used.

Customize the guest shell rootfs.	Step 1
Export the Guest Shell rootfs.	Step 2
Store it in a file server.	Step 3
Import the Guest Shell rootfs to other switches.	Step 4
Install the specific Guest Shell across devices simultaneously.	Step 5

- A. Mastered
 B. Not Mastered

Answer: A

Explanation:

A picture containing text Description automatically generated

<https://www.cisco.com/c/en/us/td/docs/switches/datacenter/nexus9000/sw/93x/programmability/guide/b-cisco-ne>

Replicating the Guest Shell

Beginning with Cisco NX-OS release 7.0(3)I7(1), a Guest Shell rootfs that is customized on one switch can be deployed onto multiple switches.

The approach is to ¹customize and then ²export the Guest Shell rootfs and ³store it on a file server. A POAP script can ⁴download (import) the Guest Shell rootfs to other switches and ⁵install the specific Guest Shell across many devices simultaneously.

- Exporting Guest Shell rootfs
- Importing Guest Shell rootfs
- Importing YAML File
- show guestshell Command

NEW QUESTION 7

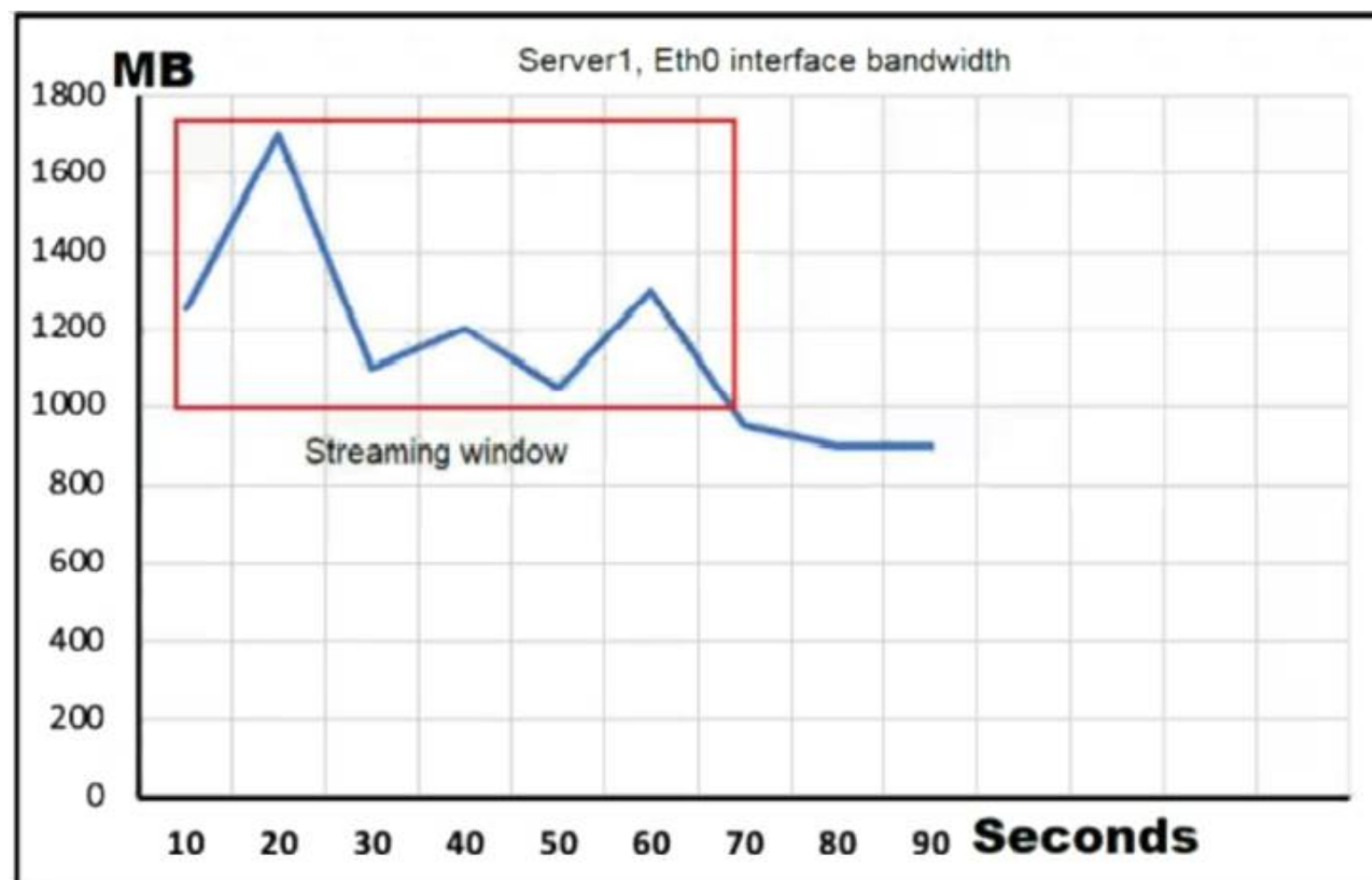
A company is investigating different options for IT automation tools. The IT team has experience with python programming language and scripting using a declarative language. The proposed tool should be easy to set up and should not require installing an agent on target devices. The team will also need to build custom modules based on the python programming language to extend the tools functionality. Which automation tool should be used to meet these requirements?

- A. Puppet
 B. Ansible
 C. NX-API
 D. Chef

Answer: B

NEW QUESTION 8

Refer to the exhibit.



Server1 is connected to a Cisco Nexus 9000 Series Switch via a 1-Gb port channel. The storm control is applied to the Eth0 device with a zero percent value. What does the switch do to traffic that traverses the switch interfaces during the streaming window that exceeds the bandwidth of the interfaces?

- A. forwards all traffic
- B. forwards half of the traffic
- C. suppresses all traffic
- D. drops all of the excess traffic

Answer: B

NEW QUESTION 9

Refer to the exhibit.

```
FI-1# scope org /
FI-1 /org # create maint-policy maintenance
FI-1 /org/maint-policy* # set reboot-policy timer-automatic
FI-1 /org/maint-policy* # set soft-shutdown-timer never
```

Which action must be taken before the maintenance policy can be committed?

- A. Set the soft shutdown timer to a specific time.
- B. Associate a service profile to the maintenance policy.
- C. Set the policy to apply the change on the next reboot.
- D. Specify a maintenance time by selecting a schedule.

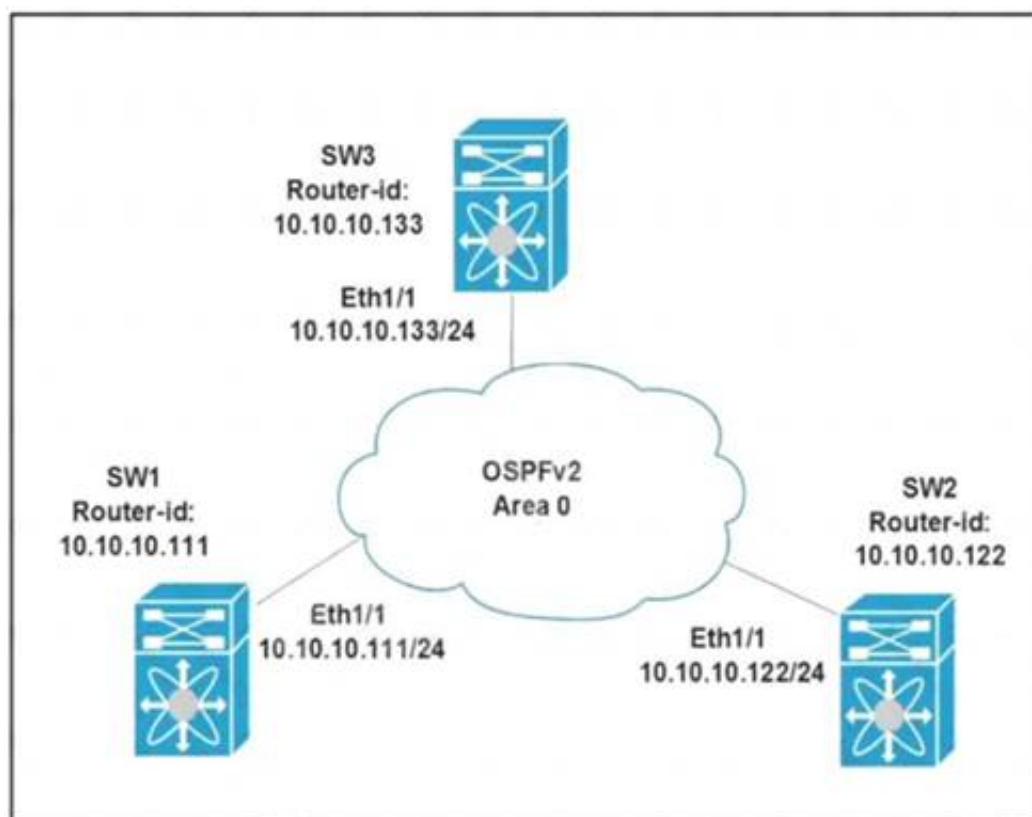
Answer: D

Explanation:

https://www.cisco.com/c/en/us/td/docs/unified_computing/ucs/ucs-manager/CLI-User-Guides/Admin-Management/3-1/b_Cisco_UCS_Manager_CLI_Administration_Mgmt_Guide_3_1/b_Cisco_UCS_Manager_CLI_Administration_Mgmt_Guide_3_1_chapter_01100.html

NEW QUESTION 10

Refer to the exhibit.



All switches are configured with the default OSPF priority. Which configuration should be applied to ensure that the SW2 Cisco Nexus switch controls the LSA floods and advertises the network to the remaining nodes in the OSPFv2 area?

- A. SW2# configure terminal SW2 (config)# interface ethernet 1/1 SW2 (config-if)# ip ospf priority 255
- B. SW2# configure terminal SW2 (config)# interface ethernet 1/1 SW2 (config-if)# ip ospf priority 1
- C. SW2# configure terminal SW2 (config)# router ospf 1 SW2 (config-router)# router-id 10.10.10.22
- D. SW2# configure terminal SW2 (config)# interface ethernet 1/1 SW2 (config-if)# ip ospf priority 0

Answer: A

Explanation:

Priority in OSPF is mainly used to influence/determine a designated router/backup designated router for a network. By default, the priority is 1 on all routers. A router with a high priority will always win the DR/BDR election process.

NEW QUESTION 10

A server engineer wants to control power uses on a Cisco UCS C-series rack server down to the component level. Which two components support specific power limits? (Choose two.)

- A. memory
- B. graphic card
- C. processor
- D. network controller
- E. storage controller

Answer: AC

NEW QUESTION 14

A network administrator is creating a custom Django self-service portal that runs on a Linux server to automate the creation of new VLANs on Cisco UCS Manager. Which feature must be installed and configured on the server?

- A. Cisco ucs Powertool Suite
- B. Cisco DNA Center API
- C. Cisco AppDynamics
- D. Cisco UCS Python SDK

Answer: C

NEW QUESTION 17

An engineer is enabling port security on a Cisco MDS 9000 Series Switch. Which feature of enabling port security on a Cisco MDS 9000 Series Switch must be considered?

- A. It always learns about switches that are logging in.
- B. It can be distributed by using Cisco Fabric services.
- C. It authorizes only the configured sWWN to participate in the fabric.
- D. It binds the fabric at the switch level.

Answer: B

Explanation:

Port Security Configuration Distribution

The port security feature uses the Cisco Fabric Services (CFS) infrastructure to enable efficient database management, provide a single point of configuration for the entire fabric in the VSAN, and enforce the port security policies throughout the fabric.

https://www.cisco.com/c/en/us/td/docs/switches/datacenter/mds9000/sw/6_2/configuration/guides/security/nx-o

NEW QUESTION 18

An engineer needs to implement a solution that prevents loops from occurring accidentally by connecting a switch to interface Ethernet1/1. The port is designated to be used for host connectivity. What configuration should be implemented?

- ☐ switch# configure terminal
switch(config)# interface Ethernet1/1
switch(config-if)# spanning-tree guard loop
- ☐ switch# configure terminal
switch(config)# interface Ethernet1/1
switch(config-if)# spanning-tree bpdudfilter enable
- ☐ switch# configure terminal
switch(config)# interface Ethernet1/1
switch(config-if)# spanning-tree bpduguard enable
- ☐ switch# configure terminal
switch(config)# interface Ethernet1/1
switch(config-if)# spanning-tree loopguard default

- A. Option A
- B. Option B
- C. Option C
- D. Option D

Answer: C

NEW QUESTION 22

Which two configuration settings are available in the Cisco UCS Firmware Auto Sync Server policy? (Choose two.)

- A. Immediate Action
- B. User Acknowledge
- C. No Action
- D. Delayed Action
- E. User Notification

Answer: BC

NEW QUESTION 26

Where does the witness VM reside in a Cisco Hyperflex Edge deployment?

- A. Windows application
- B. Hyper Rex Data Platform
- C. Cisco Intersight
- D. local HyperFlex datastore

Answer: C

NEW QUESTION 29

A storage administrator notices an increasing number of storage targets that unexpectedly reach capacity, causing periodic service interruptions. The administrator must now create and submit a daily report of the environment that shows the status of the storage targets with the highest capacities. Which solution provides this information?

- A. Nagios Core with OpManager
- B. Cisco DCNM with SAN Insight
- C. SolarWinds with Slow Drain Analysis
- D. Cisco Intersight with Slow Drain Analysis

Answer: D

NEW QUESTION 32

Which configuration generates a syslog message when CPU utilization is higher than 60%?

- A. event manager applet HIGH-CPUevent snmp oid 1.3.6.1.4.1.9.9.109.1.1.1.1.6.1 get-type exact entry-op gt 60 poll-interval 5 action 1.0 syslog priority notifications msg "cpu high"
- B. event manager applet HIGH-CPUevent snmp oid 1.3.6.1.4.1.9.9.109.1.1.1.1.6.1 get-type exact entry-op lt 60 poll-interval 5 action 1.0 syslog priority notifications msg "cpu high"
- C. event manager applet HIGH-CPUevent snmp oid 1.3.6.1.4.1.9.9.109.1.1.1.1.6.1 get-type next entry-op gt 60 poll-interval 5 action 1.0 syslog priority notifications msg "cpu high"
- D. event manager applet HIGH-CPUevent snmp oid 1.3.6.1.4.1.9.9.109.1.1.1.1.6.1 get-type next entry-op lt 60 poll-interval 5 action 1.0 syslog priority notifications msg "cpu high"

Answer: A

Explanation:

<https://www.cisco.com/c/en/us/support/docs/ip/internet-protocol-ip/200931-EEM-Subsystem-in-Order-to-Monitor-CPU-Tr.pdf>
<https://blog.ipspace.net/2008/06/generate-snmp-trap-on-high-cpu-load.html>

NEW QUESTION 33

Which two authentication types does Cisco UCS Manager support when configuration authentication? (Choose two.)

- A. local
- B. LDAP
- C. 802.1X
- D. Kerberos
- E. PAM

Answer: AB

Explanation:

https://www.cisco.com/c/en/us/td/docs/unified_computing/ucs/ucs-manager/GUI-User-Guides/Admin-Management/3-2/b_Cisco_UCS_Admin_Mgmt_Guide_3_2/b_Cisco_UCS_Admin_Mgmt_Guide_3_2_chapter_0101.html

NEW QUESTION 38

What happens to the default host firmware policy after a Cisco UCS Manager upgrade?

- A. It is updated to contain the firmware entries of all the components
- B. It is replaced by a new default policy without any firmware entries.
- C. It is assigned to all the service profiles that include a host firmware policy.
- D. It is set to match the host firmware policy.

Answer: B

Explanation:

https://www.cisco.com/c/en/us/td/docs/unified_computing/ucs/ucs-manager/GUI-User-Guides/Firmware-Mgmt/

NEW QUESTION 41

A network administrator attempts to automate the provisioning of several new Cisco Nexus switches. The administrator prepares a bootstrap configuration script for the task. Due to the number of switches a zero-touch provisioning solution is preferred. Additionally, some switches arrive with outdated software and should be automatically upgraded as part of the provisioning workflow. Which solution meets the requirements?

- A. DHCP
- B. Ansible
- C. NX-API
- D. POAP

Answer: C

NEW QUESTION 45

A network engineer plans to upgrade the firmware of a Cisco UCS B-Series chassis by using the Auto Install feature. Which component is upgraded during the infrastructure firmware upgrade stage?

- A. Cisco IMC
- B. Adapter
- C. I/O module
- D. BIOS

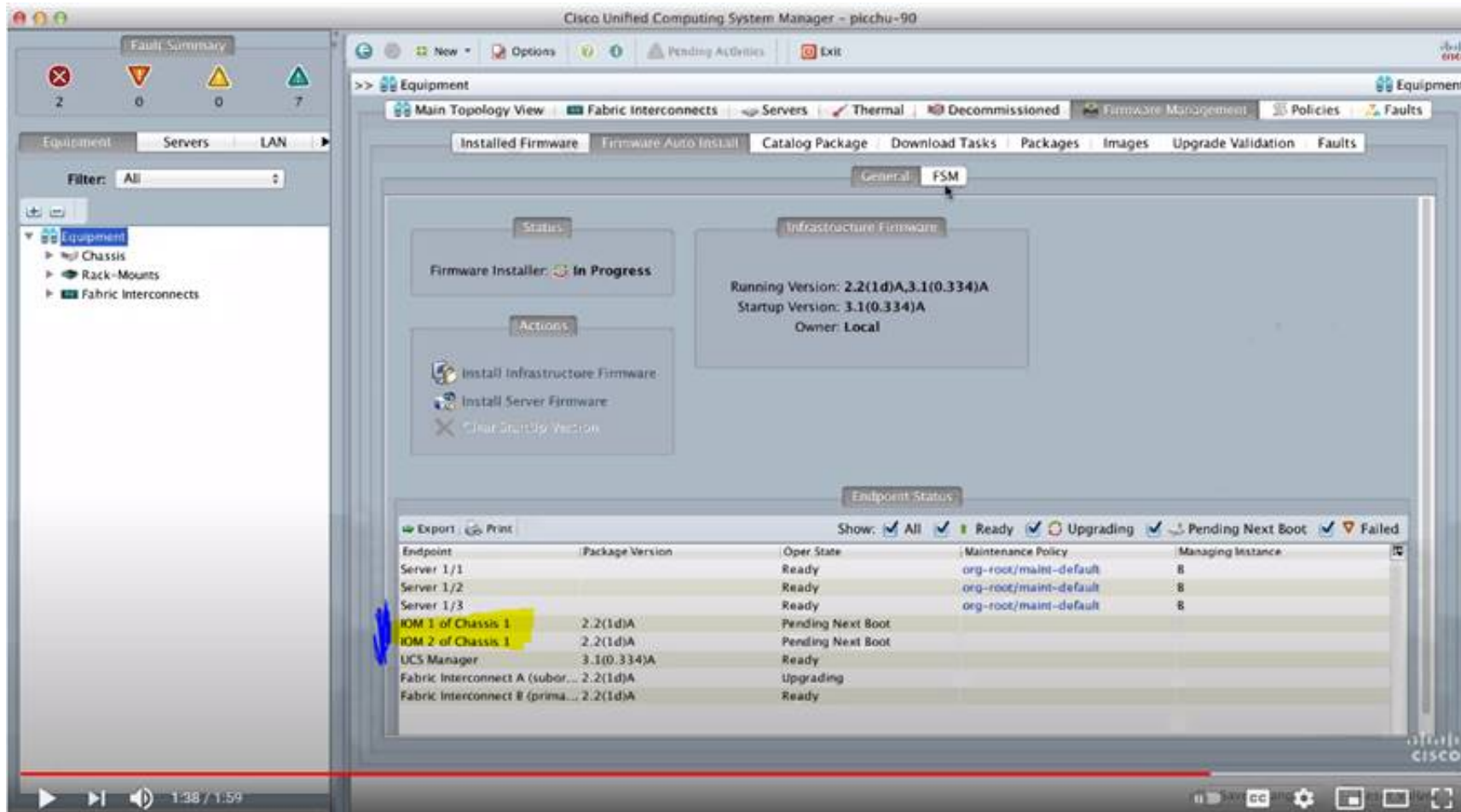
Answer: C

Explanation:

https://www.cisco.com/c/en/us/td/docs/unified_computing/ucs/ucs-manager/GUI-User-Guides/Firmware-Mgmt/ <https://www.youtube.com/watch?v=g-4OgYigvRI>

Direct Upgrade After Auto Install

During Auto Install, the startup version of the default infrastructure pack is configured. To successfully complete a direct upgrade or activation of Cisco UCS Manager, Fabric Interconnects, and IOMs after Auto Install, ensure that the startup version is cleared before starting direct upgrade or activation. If the startup version of the default infrastructure pack is configured, you cannot directly upgrade or activate Cisco UCS Manager, Fabric Interconnects, and IOMs. , provides detailed steps for clearing the startup version.



NEW QUESTION 46

A network engineer needs to configure system logging on the MDS switch. The messages must be displayed with the severity level of "warning" and above. For security reasons the users must be logged out of the console after 5 minutes of inactivity Which configuration must be applied to meet these requirements?

- ☐ MDS-A(config)# logging console 5
MDS-A(config-console)# exec-timeout 300
- ☒ MDS-A(config)# line console
MDS-A(config-console)# speed 38400
MDS-A(config-console)# exec-timeout 5
MDS-A(config)# logging console 4
- ☐ MDS-A(config)# console
MDS-A(config-console)# speed 38400
MDS-A(config-console)# session-limit 5
MDS-A(config)# logging console 5
- ☐ MDS-A(config)# logging line 4
MDS-A(config-console)# session-limit 300

- A. Option A
- B. Option B
- C. Option C
- D. Option D

Answer: B

Explanation:

DETAILED STEPS

	Command or Action	Purpose
Step 1	configure terminal Example: <pre>switch# configure terminal switch(config)#</pre>	Enters global configuration mode.
Step 2	line console Example: <pre>switch# line console switch(config-console)#</pre>	Enters console configuration mode.
Step 3	databits <i>bits</i> Example: <pre>switch(config-console)# databits 7</pre>	Configures the number of data bits per byte. The range is from 5 to 8. The default is 8.
Step 4	exec-timeout <i>minutes</i> Example: <pre>switch(config-console)# exec-timeout 30</pre>	Configures the timeout for an inactive session. The range is from 0 to 525600 minutes (8760 hours). A value of 0 minutes disables the session timeout. The default is 30 minutes.

NEW QUESTION 49

Which two protocols are used by the NFSv4 protocol? (Choose two.)

- A. FCP
- B. TCP
- C. UDP
- D. Ethernet
- E. IP

Answer: BE

NEW QUESTION 50

Which data structure results from running this Python code?

```
>>> import json
>>> f = open('fname.json', 'r')
>>> var1 = json.load(f)
>>> var1
{'bd': u'bd1', 'ap': {'epgs': [{u'name': u'app'}, {u'name': u'web'}, {u'name': u'db'}], u'name': u'OnlineStore'}, u'name': u'39233259', u'pvn': u'pvn1'}
```

- A. tuple
- B. dictionary
- C. set
- D. list

Answer: B

NEW QUESTION 52

An engineer must configure a Cisco UCS blade system that is managed by Cisco UCS Manager. All four connected interfaces between the blade system and the fabric interconnects must be used. Additionally, the connectivity must tolerate any link failure between the I/O module and the fabric interconnects. Which action accomplishes these requirements?

- A. Configure port aggregation with LACP policy set to default
- B. Configure Firmware Auto Sync Server policy to Auto Acknowledge
- C. Configure Link Group Preference to Port Channel.
- D. Configure chassis/FEX discovery pokey action to four links

Answer: D

NEW QUESTION 53

The engineer must configure SPAN on a cisco Nexus 5000 Series switch to get a capture of the traffic from these applications for an in-depth packet analysis. Which two characteristics must be considered? (Choose two.)

- A. The Ethernet, FC, vFC, port channel, SAN port channel can be used as SPAN source ports.
- B. The rx/tx option is available for VLAN or VSAN SPAN sessions.
- C. SPAN source port can be monitored in multiple SPAN sessions.

- D. Only Ethernet, FC, vFC, port channel port types can be a destination SPAN port.
 E. A SPAN source port cannot be a destination SPAN port.

Answer: AE

Explanation:

https://www.cisco.com/en/US/docs/switches/datacenter/nexus5000/sw/configuration/guide/cli_rel_4_1/Cisco_N

NEW QUESTION 55

An engineer needs to create a new user in the local user database on Cisco UCS Fabric Interconnect. The user needs permissions to change the following configuration inside UCS Manager version 3.1:

- vNIC and vHBA profiles
- Fan speed and power redundancy profile of UCS Manager

Which two roles must be assigned to a user to achieve this goal? (Choose two.)

- A. server-compute
 B. facility-manager
 C. operations
 D. server-equipment
 E. server-profile

Answer: AD

NEW QUESTION 59

Refer to the exhibit.

Priority	Enabled CoS	Packet Drop	Weight	Weight (%)	MTU	Multicast Optimized
Platinum	<input type="checkbox"/> 5	<input type="checkbox"/>	10	N/A	normal	<input type="checkbox"/>
Gold	<input type="checkbox"/> 4	<input checked="" type="checkbox"/>	9	N/A	normal	<input type="checkbox"/>
Silver	<input type="checkbox"/> 2	<input checked="" type="checkbox"/>	8	N/A	normal	<input type="checkbox"/>
Bronze	<input type="checkbox"/> 1	<input checked="" type="checkbox"/>	7	N/A	normal	<input type="checkbox"/>
Best Effort	<input checked="" type="checkbox"/> Any	<input type="checkbox"/>	5	50	normal	<input type="checkbox"/>
Fibre Channel	<input checked="" type="checkbox"/> 3	<input type="checkbox"/>	5	50	0	N/A

An engineer must configure a QoS policy that controls only vHBA traffic. Which policy must be used to meet this requirement?

- A. Best Effort
 B. Fibre Channel
 C. Gold
 D. Platinum

Answer: B

NEW QUESTION 63

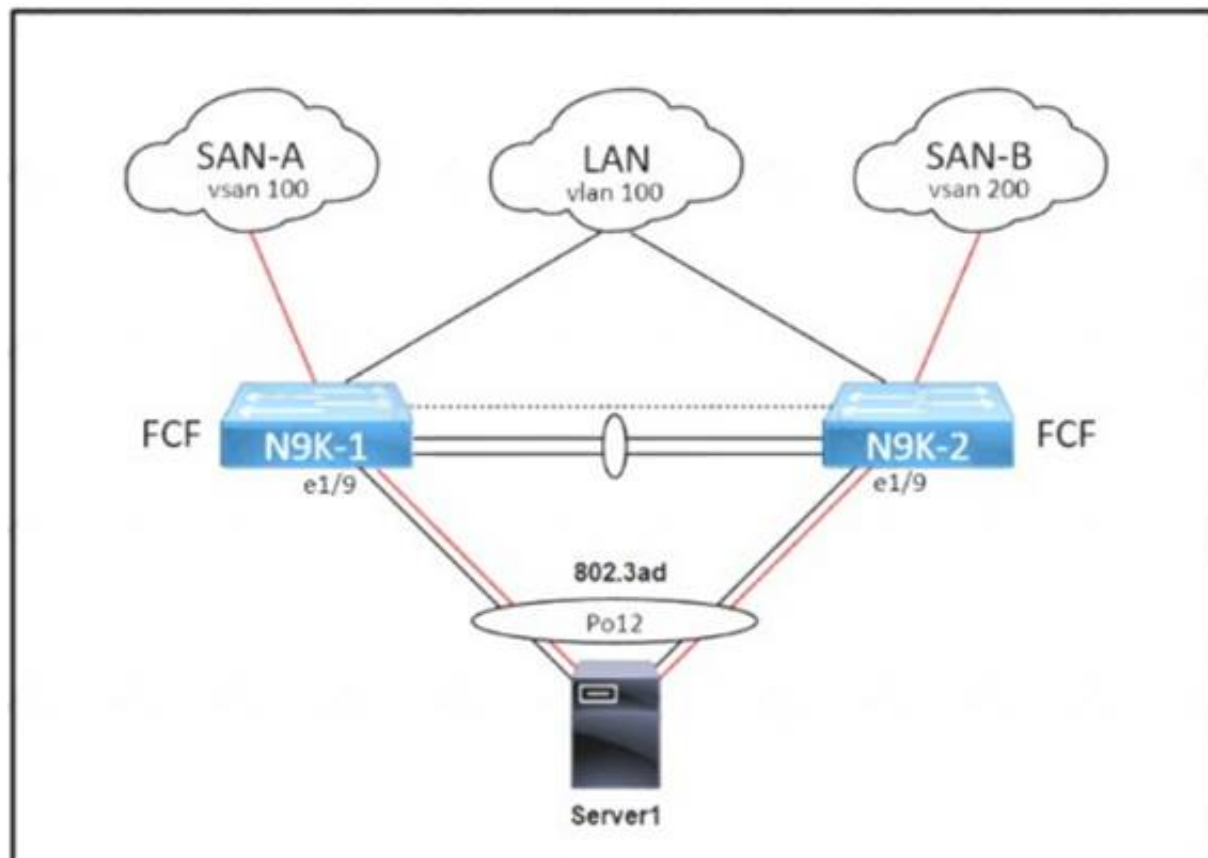
Refer to the exhibit. A network engineer must Improve the convergence time during vPC primary peer device failure and recovery. Which set of actions is required on both vPC switches to accomplish this task?

- A. Option A
 B. Option B
 C. Option C
 D. Option D

Answer: D

NEW QUESTION 68

Refer to the exhibit.



An administrator must complete the unified fabric configuration between Server1 and a pair of Cisco Nexus 9000 Series Switches Drag and drop the code snippets from the right onto the blanks in the code on the left to complete the N9K-1 configuration Snippets are used more than once.

```

service-policy type qos input default-fcoe-in-policy
int [ ]
  switchport trunk allowed [ ] 1, 100
int [ ]
  bind interface [ ]
  no shut
        
```

vlan

vfc 1

po12

- A. Mastered
- B. Not Mastered

Answer: A

Explanation:

Po12
Vlan Vfc1 Po12

NEW QUESTION 71

An engineer is implementing the Cisco ACI fabric and wants to reduce the amount of TCAM resources consumed by the fabric The engineer also needs to ensure that all EPGs m a VRF consume the same services Which action should be taken to meet these requirements?

- A. Configure a single contract provided and consumed in all EPGs
- B. Configure preferred groups in the VRF for al EPGs
- C. Implement an unenforced VRF
- D. Implement vzAny feature

Answer: A

NEW QUESTION 75

An engineer mus! send JSON encoded telemetry data to an external collector. The transport mechanism must prevent tamenng or forgery of the data. Which protocol accomplishes this goal?

- A. GPB
- B. HTTP
- C. gRPC
- D. DTLS

Answer: B

NEW QUESTION 80

An engineer upgrades the bash on the Cisco Nexus 9000 Series Switch.

```

guestshell:~$ sudo [MISSING_COMMAND] /bootflash/bash-4.2_8642092948678a-r8x86_64.rpm.rpm
Preparing...
##### [100%]
1: bash ##### [100%]
update-alternatives: Linking //bin/sh to /bin/bash
        
```

Which command must be sed to complete the task?

- A. rpm -qa
- B. rpm -Uhv
- C. upgrade -U
- D. update -vh

Answer: B

NEW QUESTION 82

A Cisco MDS 9000 Series Switch is configured for SAN Analytics and SAN Telemetry Streaming. An engineer must enable analytics for NVMe on interfaces in the range of fc1/1-12. Due to a large amount of traffic generated in the SAN environment, the data must be collected at regular intervals of 60 seconds from ports fc 1-12 and then for ports fc13-24 for the next 60 seconds. Ports in the range fc4/13-14 were already enabled for analytics. Which set of commands must be used to meet these requirements?

- ☒ interface fc1/1-12
port-sampling module 4 size 12 interval 60
analytics nvme
- ☐ interface fc1/1-12
port-sampling module 4 size 12 interval 60000
analytics type fc-scsi
- ☐ analytics port-sampling module 4 size 12 interval 60000
- ☐ interface fc1/1-12
analytics fc-scsi
analytics fc-nvme
- ☐ analytics port-sampling module 4 size 12 interval 60
interface fc1/1-12
analytics type fc-nvme

- A. Option A
- B. Option B
- C. Option C
- D. Option D

Answer: D

NEW QUESTION 86

When deploying a Cisco HyperFlex edge with a pair of switches, what is the minimum number of interfaces in trunk mode required on each HX node?

- A. 1
- B. 2
- C. 4
- D. 6

Answer: B

NEW QUESTION 89

Refer to the exhibit.

```
switch(config)# interface Ethernet 2/2
switch(config)# ip address 172.23.231.240/23
switch(config)# ip verify unicast source reachable-via rx
```

What is configured as a result of running these commands?

- A. reverse lookup for outbound packets
- B. strict unicast RPF
- C. loose unicast RPF
- D. IP Source Guard

Answer: B

Explanation:

https://tools.cisco.com/security/center/resources/unicast_reverse_path_forwarding

The ip verify unicast source reachable-via rx command enables Unicast RPF in strict mode. To enable loose mode, administrators can use the any option to enforce the requirement that the source IP address for a packet must appear in the routing table.

NEW QUESTION 94

Refer to the exhibit.

```
CISCO-UCS-A# scope org /
CISCO-UCS-A /org* # create service-profile Cisc01 instance
CISCO-UCS-A /org/service-profile* # set bios-policy bios1
CISCO-UCS-A /org/service-profile* # set boot-policy boot1
CISCO-UCS-A /org/service-profile* # set ext-mgmt-ip-state none
CISCO-UCS-A /org/service-profile* # set host-fw-policy ipmi-user987
CISCO-UCS-A /org/service-profile* # set identity dynamic-uuid derived
CISCO-UCS-A /org/service-profile* # set ipmi-access-profile ipmi1
CISCO-UCS-A /org/service-profile* # set local-disk-policy local1
CISCO-UCS-A /org/service-profile* # set maint-policy maint1
CISCO-UCS-A /org/service-profile* # set mgmt-fw-policy mgmt1
CISCO-UCS-A /org/service-profile* # set power-control-policy power1
CISCO-UCS-A /org/service-profile* # set scrub-policy scrub1
CISCO-UCS-A /org/service-profile* # set sol-policy soll
CISCO-UCS-A /org/service-profile* # set stats-policy stats1
CISCO-UCS-A /org/service-profile* # set user-label Cisco
CISCO-UCS-A /org/service-profile* # vcon-policy vconnpolicy
CISCO-UCS-A /org/service-profile* # commit-buffer
CISCO-UCS-A /org/service-profile #
```

What is a characteristic presented in the service profile of the UUID?

- A. based on the hardware
- B. vendor assigned
- C. unique system generated
- D. allocated from a UUID pool

Answer: A

Explanation:

there is no parameter for 'set identity dynamic-uuid' to specify a pool name - you can only state "derived" or a 32 hex character string (128-bits, therefore full UUID).

ucspe /org/service-profile # set identity dynamic-uuid derived Derived
 FFFFFFFF-FFFF-FFFF-FFFF-FFFFFFFFFFFFFF Dynamic UUID

The documentation, as usual for Cisco, is poor. Shagua references old v1.4.1 documentation but it's the same in 4.1. It's inaccurate as uuid-pool should now read uuid-suffix-pool. You can use UCSPE to check the CLI with contextual help.

ucspe /org/service-profile # set identity dynamic-uuid Dynamic UUID dynamic-wwnn Dynamic WWNN uuid-suffix-pool UUID Suffix Pool wwnn-pool WWNN Pool
 If set identity dynamic-uuid only gives us the option of a static UUID or the parameter "derived", and set identity uuid-suffix-pool is the option to assign a pool... I would suggest that the most logical answer here is

- derived from the hardware. https://www.cisco.com/en/US/docs/unified_computing/ucs/sw/cli/config/guide/1.4.1/CLI_Config_Guide_1_4_1

NEW QUESTION 96

What is an advantage of streaming telemetry over SNMP?

- A. on-change traps sent to a receiver
- B. periodic push-based subscription messages
- C. periodic polling of the device status
- D. MD5-based authentication on polling

Answer: B

NEW QUESTION 101

A network engineer connects the CNA interface of a server to a switch. The switch must bring down all of the VLANs on the interface that are not enabled for FCoE, but the VLANs that are enabled for FCoE should continue to carry SAN traffic without interruption. Which configuration should be applied to the switch to achieve this objective?

- A. switch(config)# interface Ethernet 2/1 switch(config-if)# shutdown lan
- B. switch(config)# interface vfc 2 switch(config-if)# shutdown lan
- C. switch(config)# Interface Ethernet vfc 2 switch(config-if)# shutdown force
- D. switch(config)# interface Ethernet 2/1 switch(config-if)# shutdown force

Answer: A

NEW QUESTION 104

Which two statements describe modifying Cisco UCS user accounts? (Choose two.)

- A. Disabling a user account maintains all of the data in the Cisco UCS Fabric Interconnect.
- B. The admin account is used only to log on by using SSH.
- C. The password of the user account must contain a minimum of 10 characters.
- D. Local user accounts override the same account on a remote authentication server, such as TACACS, RADIUS, or LDAP.
- E. The password of the user account expires in 30 days.

Answer: AD

Explanation:

https://www.cisco.com/c/en/us/td/docs/unified_computing/ucs/ucs-manager/GUI-User-Guides/Admin-Managem

NEW QUESTION 107

Drag and drop the network assurance concepts from the left onto the corresponding benefits on the right.

Cisco Tetration	allows close to real-time data monitoring
Data Management Engine	confirms that the network operates consistently with business requirements
Cisco Network Assurance Engine	offers overall protection and enables analysis of the network in real time to identify security incidents faster
Streaming Telemetry	allows the characteristics to be presented as object properties

- A. Mastered
 B. Not Mastered

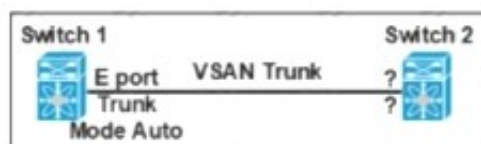
Answer: A

Explanation:

Diagram Description automatically generated

NEW QUESTION 112

Refer to the exhibit.



Which feature must be used to configure on switch 2 to establish a VSAN trunk between switch 1 and switch 2?

- A. F portTrunk Mode Passive
 B. E PortTrunk Mode On
 C. N PortTrunk Mode Active
 D. NP PortTrunk Mode Auto

Answer: B

NEW QUESTION 117

A network engineer configures a converged network adapter (CNA) and must associate a virtual fiber Channel 7 interface to VSAN 7. The CNA connected to the interface Eth1/7, and VLAN 700 is mapped to the VSNA. Which configuration must be applied to create the virtual Fiber Channel interface and associate it with the Ethernet physical interface?

A)

```
switch(config)# vlan 700
switch(config-vlan)# fcoe vsan 7
```

B)

```
switch(config)# vsan database
switch(config-vsan)# vsan 7 interface vfc 7
```

C)

```
switch(config)# interface ethernet 1/7
switch(config-if)# vfc 7 attach vlan 1,700
```

D)

```
switch(config)# interface vfc 7
switch(config-if)# bind interface ethernet 1/7
```

- A. Option A
 B. Option B

- C. Option C
D. Option D

Answer: D

NEW QUESTION 119

Refer to the exhibit.

```
1  . /etc/init.d/functions
2  exec="/usr/bin/chef-client"
3  prog="chef-client"
4  [ -e /etc/sysconfig/$prog ] && . /etc/sysconfig/$prog
5  config=${CONFIG:-/etc/chef/client.rb}
6  pidfile=${PIDFILE:-/var/run/chef/client.pid}
7  reload() {
8  echo -n $"Reloading $prog: "
9  [ -n "$?" ] && {
10     retval=$?
11     echo
12     return $retval
13 }
14 case "$1" in
15     reload)
16         rh_status_q || exit 7
17         ;;
18     exit 2
19     esac
20     exit $?

```

A developer must create a Bash script that performs a Chef Client reload in the event of a system reset. Which command completes the script?

- ☐ killproc -n \$pidfile \$exec -SIGHUP
- ☐ killproc -pi \$pidfile \$exec -HUP
- ☐ killproc -n \$pidfile \$exec -HUP
- ☐ killproc -p \$pidfile \$exec -HUP

- A. Option A
B. Option B
C. Option C
D. Option D

Answer: D

NEW QUESTION 122

Refer to the exhibit.

```
Nexus# show vpc peer-keepalive | i Keepalive
--Keepalive interval : 1000 msec
--Keepalive timeout : 5 seconds
--Keepalive hold timeout : 3 seconds
--Keepalive vrf : management
--Keepalive udp port : 3200
--Keepalive tos : 192

Nexus# ethanalyzer local interface mgmt limit-captured-frames 1000

Capturing on mgmt0
2019-06-15 12:01:51.242597 192.168.254.11 -> 192.168.254.3 ICMP Echo (ping) request
2019-06-15 12:01:51.242860 192.168.254.3 -> 192.168.254.11 ICMP Echo (ping) reply
2019-06-15 11:50:15.975474 192.168.254.1 -> 192.168.254.3 TCP 47540 > bootps [SYN] Seq=0 Win=1024 Len=0 MSS=1460
2019-06-15 11:50:15.975547 192.168.254.3 -> 192.168.254.1 TCP 29 > 47540 [RST, A CK] Seq=1 Ack=1 Win=0 Len=0
2019-06-15 11:50:15.975564 192.168.254.1 -> 192.168.254.3 TCP 47540 > 44 [SYN] Seq=0 Win=1024 Len=0 MSS=1460
2019-06-15 11:50:15.975924 192.168.254.1 -> 192.168.254.3 TCP 47540 > discard [SYN] Seq=0 Win=1024 Len=0 MSS=1460
2019-06-15 11:50:15.976027 192.168.254.1 -> 192.168.254.3 TCP 47540 > 97 [SYN] Seq=0 Win=1024 Len=0 MSS=1460
2019-06-15 11:50:15.976381 192.168.254.1 -> 192.168.254.3 TCP 47540 > 35 [SYN] Seq=0 Win=1024 Len=0 MSS=1460
2019-06-15 11:50:16.661845 192.168.254.3 -> 192.168.254.4 UDP Source port: 3200 Destination port: 3200
2019-06-15 11:50:16.761147 00:8e:73:a2:41:13 -> 01:80:c2:00:00:00 STP Conf. Root = 8192/10/ec:e1:a9:df:6c:80 Cost = 22 Port = 0x8013
2019-06-15 11:50:16.853248 192.168.254.4 -> 192.168.254.3 UDP Source port: 3200 Destination port: 3200
2019-06-15 11:50:17.326253 192.168.254.1 -> 192.168.254.3 SSH Encrypted request packet len=52
2019-06-15 11:50:17.327313 192.168.254.3 -> 192.168.254.1 SSH Encrypted response packet len=1348
2019-06-15 11:50:17.377246 192.168.254.4 -> 239.255.70.83 UDP Source port: 7546 Destination port: 7546
2019-06-15 11:50:17.552215 192.168.254.1 -> 192.168.254.3 TCP 14139 > ssh [ACK] Seq=365 Ack=11277 Win=63546 Len=0
2019-06-15 11:50:17.661764 192.168.254.3 -> 192.168.254.4 UDP Source port: 3200 Destination port: 3200
2019-06-15 11:50:17.653242 192.168.254.4 -> 192.168.254.3 UDP Source port: 3200 Destination port: 3200
2019-06-15 11:50:17.872637 8c:60:4f:aa:c2:e1 -> 01:80:e7:00:00:0e LLDp Chassis : d = 8c:60:41:aa:c2:e1 Port Id = mgmt0 TTL = 120
2019-06-15 11:50:08.173056 192.168.256.3 -> 192.168.254.2 NTP NTP client
2019-06-15 11:50:08.173256 192.168.256.2 -> 192.168.254.3 NTP NTP server

```

A flapping link issue has been reported on the vPC keepalive link. A packet capture has been activated on the Cisco Nexus switch. What is the destination IP address of the vPC keepalive packets that are sent by the switch?

- A. 192.168.254.4
- B. 239.255.70.83
- C. 192.168.254.1
- D. 192.168.254.2

Answer: A

Explanation:

<https://www.cisco.com/c/en/us/td/docs/switches/datacenter/nexus3000/sw/interfaces/92x/b-cisco-nexus-3000-nx>

NEW QUESTION 123

An engineer must configure SAN connectivity in Cisco UCS manager. The requirement is to specify the WWPN of the storage array and set the zoning type to single initiator multiple targets. The engineer must also configure interrupt handling and queues of the vHBA interface. Which two Cisco UCS policies should be used to configure the settings? (Choose two.)

- A. storage connection policy
- B. SAN connectivity policy
- C. vHBA policy
- D. Fibre Channel adaptor policy
- E. boot policy

Answer: AD

NEW QUESTION 125

A cisco Nexus 9000 series switch experiences a startup configuration corruption. The engineer must implement a procedure to recover configuration file from the switch. Which command set must be used?

- A. * 1. Copy the running-configuration to the startup configuration.* 2. Clear the current configuration of the switch.* 3. Restart the device.* 4. Copy a previously saved configuration file to the running configuration.
- B. * 1. Clear the current configuration of the switch* 2. Restart the device.* 3. Copy the running configuration to the startup configuration* 4. Copy a previously saved configuration file to the running configuration
- C. * 1. Clear the current configuration of the switch* 2. Restart the device.* 3. Copy a previously saved configuration file to the running-configuration* 4. Copy the running-configuration to the startup configuration.
- D. * 1.Restarting device.* 2. Copy the running-configuration file to a remote server.* 3. Clear the current configuration of the switch.* 4. Copy the running configuration to the startup configuration

Answer: C

Explanation:

Problems, such as memory corruption, can occur that make it necessary for you to recover your configuration from a backed-up version.

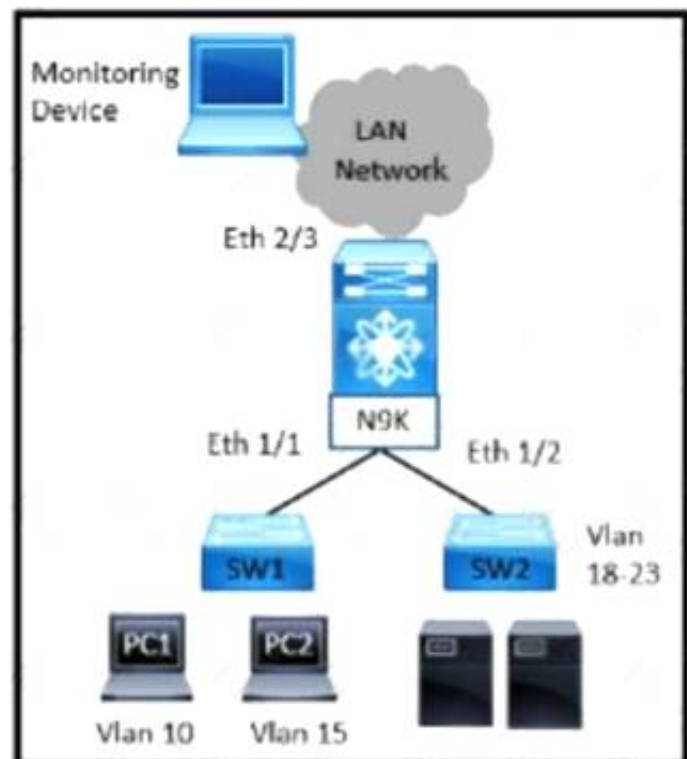
Each time that you enter a copy running-config startup-config command, a binary file is created and the ASCII file is updated. A valid binary configuration file reduces the overall boot time significantly. A binary file cannot be uploaded, but its contents can be used to overwrite the existing startup configuration. The write erase command clears the binary file.

SUMMARY STEPS

- * 1. write erase
- * 2. reload
- * 3. copy configuration-file running-configuration
- * 4. copy running-config startup-config <https://www.cisco.com/c/en/us/td/docs/switches/datacenter/nexus9000/sw/93x/fundamentals/configuration/guide>

NEW QUESTION 129

Refer to the exhibit



A network administrator experiences these issues with the network:

- PC1 is experiencing a buffering problem for video applications
- The servers that are connected to SW2 are experiencing packet drops when they connect to the Internet

The engineer wants to configure the required traffic capture to investigate the issue further Which configuration must be implemented to monitor the traffic?

- ☐ N9K(config)# monitor session 5 rx
 N9K(config)# monitor session 5 tx
 N9K(config-monitor)# description Span_session_5
 N9K(config-monitor)# source interface ethernet 1/1
 N9K(config-monitor)# source interface ethernet 1/2
 N9K(config-monitor)# destination interface ethernet 2/3
- ☐ N9K(config)# monitor session 5 tx
 N9K(config-monitor)# description Span_session_5
 N9K(config-monitor)# source interface ethernet 1/1
 N9K(config-monitor)# source interface ethernet 1/2
 N9K(config-monitor)# destination interface ethernet 2/3
- ☐ N9K(config)# monitor session 5 tx
 N9K(config-monitor)# description Span_session_5
 N9K(config-monitor)# source vlan 10-15 rx
 N9K(config-monitor)# source interface ethernet 1/2
 N9K(config-monitor)# destination interface ethernet 2/3
- ☒ N9K(config)# monitor session 5 rx
 N9K(config-monitor)# description Span_session_5
 N9K(config-monitor)# source vlan 10 rx
 N9K(config-monitor)# source interface ethernet 1/2
 N9K(config-monitor)# destination interface ethernet 2/3

- A. Option A
- B. Option B
- C. Option C
- D. Option D

Answer: D

NEW QUESTION 131

A customer deploys a media server to distribute streaming videos to network clients. The requirement is to allow the video feed to reach only requesting clients. The shared trees must not propagate the video feed if no clients from that tree request it. To reduce configuration touchpoints, the solution must support the automatic discovery and announcement of RP-set information. Each router in the network is responsible for selecting the RP. Which configuration set meets these requirements?

- A)
 router(config-if)# ip pim bidir-enable
 router(config)# ip pim ssm default
 router(config)# ip igmp version 3
- B)
 router(config-if)# ip pim dense-mode
 router(config)# ip pim rp-address 1.1.1.1
 router(config)# ip pim rp listener
- C)
 router(config-if)# ip pim sparse mode
 router(config)# ip pim bsr-candidate Lo0
 router(config)# ip pim rp-candidate Lo0
- D)
 router(config-if)# ip pim sparse-sense mode
 router(config)# ip pim auto-rp
 router(config)# ip pim send-rp-announce

- A. Option A
- B. Option B
- C. Option C
- D. Option D

Answer: D

NEW QUESTION 132

An engineer needs to connect Cisco UCS Manager to an external storage array. Due to budget limitations, the engineer must connect a Cisco UCS manager directly to an FC storage port. Which two actions must be taken to complete this connection? (Choose two)

- A. Configure the fabric interconnect in FC switch mode
- B. Create a storage connection policy
- C. Set FC zoning to disabled when creating the VSAN
- D. Configure the fabric interconnect in end host mode
- E. Create the required VSAN in the SAN cloud

Answer: AC

NEW QUESTION 137

An engineer must implement an automation solution to allow the backup of the configuration of cisco Nexus series switches to a centralized location. The solution must:

- * Support the team-developed custom monitoring scripts that are packaged using RPM packaging that the framework must support.
- * Be developed from the underlying cisco Nexus operating system.
- * Have no impact on the operating system of the underlying switch if the resource contention occurs.
- * Use Python to expand the existing automation framework. Which solution meets these requirements?

- A. Guest Shell
- B. Bash Shell
- C. TCL Shell
- D. Vegas Shell

Answer: A

NEW QUESTION 140

An engineer must configure OSPF in the data center. The external routes have already been redistributed OSPF. The network must meet these criteria:

- * The data centre servers must reach services in the cloud and the services behind the redistributed routes.
 - * The exit point toward the internet should be propagated only when there is a dynamically learned default route from the upstream router.
- Which feature is required?

- A. Default-information originate
- B. Stubby area
- C. Totally stubby area
- D. Default-information originate always

Answer: A

Explanation:

<https://learningnetwork.cisco.com/s/question/0D53i00000Kt544/defaultinformationoriginate-always>

NEW QUESTION 143

An engineer must add a new VRF (DC DC) to the network that runs with Multiprotocol Border Gateway Protocol (MP-BGP) and EVPN. The requirement for the new VRF is to allow communication of network

prefixes between PE1 and PE2. Which two sets of steps should be taken to complete the VRF configuration? (Choose two)

☒

PE1

```

vrf context DC:DC
rd 233:1
address-family ipv4 unicast
route-target import 233:1
route-target export 233:2
                    
```

PE2

```

vrf context DC:DC
rd 233:2
address-family ipv4 unicast
route-target import 233:1
route-target export 233:2
                    
```

☐

PE1

```

vrf context DC:DC
rd 233:1
address-family ipv4 unicast
route-target import 233:1
route-target export 233:2
                    
```

PE2

```

vrf context DC:DC
rd 233:1
address-family ipv4 unicast
route-target import 233:2
route-target export 233:1
                    
```

☐

PE1

```

vrf context DC:DC
rd 233:1
address-family ipv4 unicast
route-target import 233:1
route-target export 233:1
                    
```

PE2

```

vrf context DC:DC
rd 233:1
address-family ipv4 unicast
route-target import 233:2
route-target export 233:2
                    
```

☐

PE1

```

vrf context DC:DC
rd 233:1
address-family ipv4 unicast
route-target import 233:1
route-target export 233:1
                    
```

PE2

```

vrf context DC:DC
rd 233:2
address-family ipv4 unicast
route-target import 233:2
route-target export 233:1
                    
```

☐

PE1

```

vrf context DC:DC
rd 233:1
address-family ipv4 unicast
route-target import 233:1
route-target export 233:2
                    
```

PE2

```

vrf context DC:DC
rd 233:1
address-family ipv4 unicast
route-target import 233:2
route-target export 233:2
                    
```

- A. Option A
- B. Option B
- C. Option C

- D. Option D
- E. Option E

Answer: DE

NEW QUESTION 144

Drag and drop the fields for configuring a full state backup file of the Cisco UCS Manager from the left onto the descriptions on the right.

hostname	location where the backup file id stored
protocol	full path to the backup configuration file
remote file	binary file that includes a snapshot of the entire system
type	settings used to transfer the file to the backup server

- A. Mastered
- B. Not Mastered

Answer: A

Explanation:

Diagram Description automatically generated

NEW QUESTION 145

Which two features are used to allow a nondisruptive upgrade for the ISSU process? (Choose two.)

- A. connectivity management processor
- B. nonstop forwarding
- C. graceful restart
- D. stateful switchover
- E. advanced services license

Answer: BD

NEW QUESTION 149

An engineer must configure Cisco Nexus 9000 Series Switches for Cisco UCS Director integration The configuration must enable automated onboarding of the switches as they come online. For security purposes, the switches must have the bare minimum of connection methods enabled. The connection protocol must allow authentication through credentials. Which protocol must be configured on the switches to allow automated onboarding?

- A. SNMP
- B. Telnet
- C. SSH
- D. HTTPS

Answer: C

NEW QUESTION 154

Refer to the exhibit.

The screenshot shows the Cisco User Services configuration interface. The breadcrumb navigation is >> All > User Management > User Services. The 'Locally Authenticated Users' tab is selected. Under the 'Properties' section, 'Password Strength Check' is checked. The 'Password Profile' section contains the following settings: 'Change Interval' is 48, 'History Count' is 5, 'No Change Interval' is 24, and 'Change Count' is 2. The 'Change During Interval' option is set to 'Enable'. At the bottom, there is a table with two rows: 'admin' and 'test'. The 'test' row is highlighted. Below the table are 'Save Changes' and 'Reset Values' buttons.

Which setting must be configured to prevent reuse of passwords?

- A. No Change Interval
- B. Change Interval
- C. History Count
- D. Change Count

Answer: C

Explanation:

https://www.cisco.com/c/en/us/td/docs/unified_computing/ucs/ucs-manager/GUI-User-Guides/Admin-Management/3-1/b_Cisco_UCS_Admin_Mgmt_Guide_3_1/b_Cisco_UCS_Admin_Mgmt_Guide_3_1_chapter_011.html

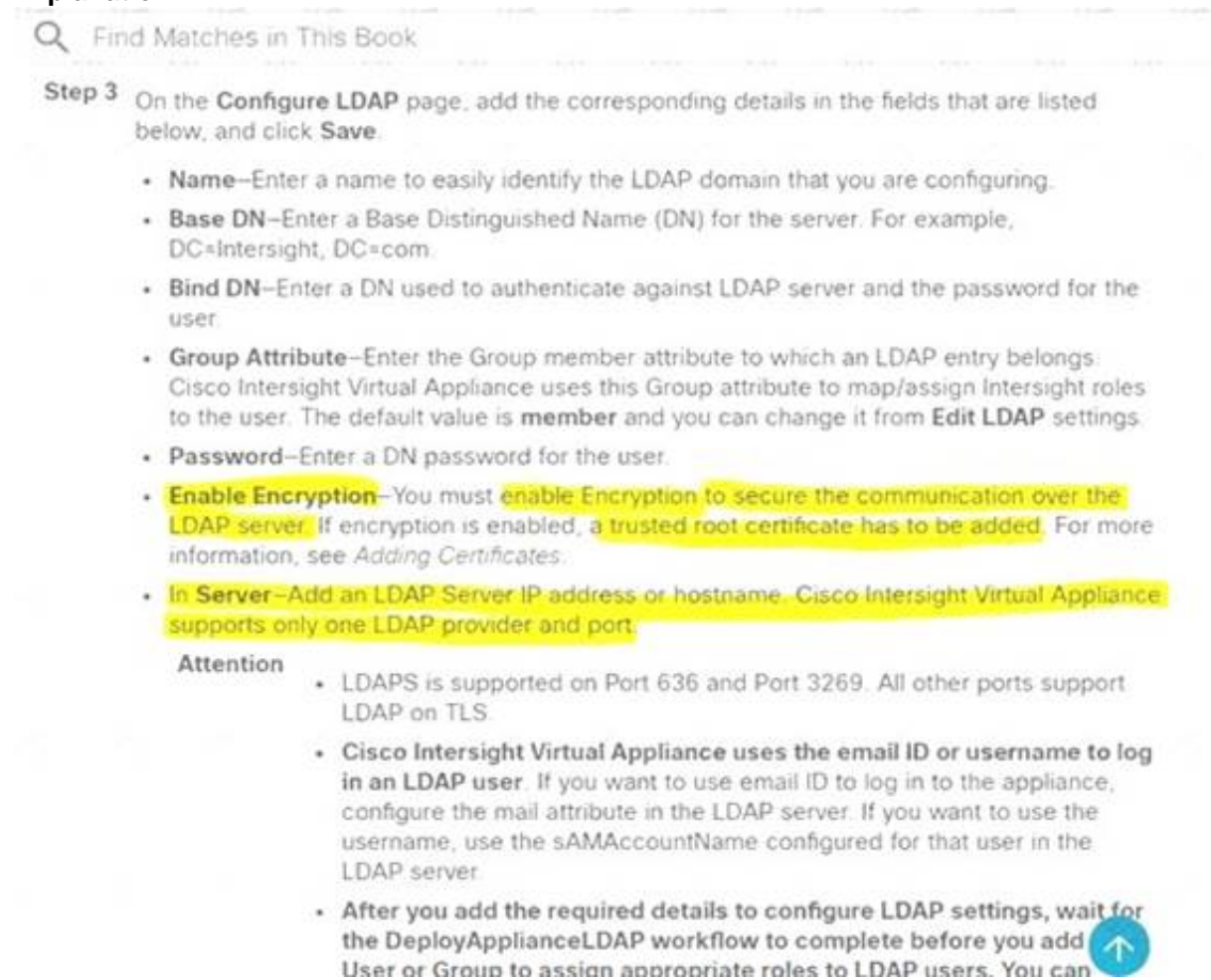
NEW QUESTION 157

An engineer is implementing Cisco Intersight in a secure environment. The environment must use LDAP directory service and ensure information integrity and confidentiality. Which two steps must be taken to implement the solution? (Choose two.)

- A. Enable Encryption for LDAP
- B. Add a self-signed LDAP certificate to Cisco Intersight.
- C. Enable Certificate Signing Request in Cisco Intersight.
- D. Add a trusted root LDAP certificate to Cisco Intersight
- E. Add a trusted OAuth token to Cisco Intersight

Answer: AD

Explanation:



The screenshot shows a search bar at the top with the text "Find Matches in This Book". Below it, a section titled "Step 3" contains the following instructions: "On the **Configure LDAP** page, add the corresponding details in the fields that are listed below, and click **Save**."

- **Name**—Enter a name to easily identify the LDAP domain that you are configuring.
- **Base DN**—Enter a Base Distinguished Name (DN) for the server. For example, DC=Intersight, DC=com.
- **Bind DN**—Enter a DN used to authenticate against LDAP server and the password for the user.
- **Group Attribute**—Enter the Group member attribute to which an LDAP entry belongs. Cisco Intersight Virtual Appliance uses this Group attribute to map/assign Intersight roles to the user. The default value is **member** and you can change it from **Edit LDAP** settings.
- **Password**—Enter a DN password for the user.
- **Enable Encryption**—You must **enable Encryption to secure the communication over the LDAP server**. If encryption is enabled, **a trusted root certificate has to be added**. For more information, see *Adding Certificates*.
- **In Server**—Add an LDAP Server IP address or hostname. **Cisco Intersight Virtual Appliance supports only one LDAP provider and port.**

Below the list, there is an "Attention" section with the following points:

- LDAPS is supported on Port 636 and Port 3269. All other ports support LDAP on TLS.
- **Cisco Intersight Virtual Appliance uses the email ID or username to log in an LDAP user.** If you want to use email ID to log in to the appliance, configure the mail attribute in the LDAP server. If you want to use the username, use the sAMAccountName configured for that user in the LDAP server.
- **After you add the required details to configure LDAP settings, wait for the DeployApplianceLDAP workflow to complete before you add User or Group to assign appropriate roles to LDAP users.** You can

https://www.cisco.com/c/en/us/td/docs/unified_computing/Intersight/b_Cisco_Intersight_Appliance_Getting_Started_Guide/b_Cisco_Intersight_Appliance_Install_and_Upgrade_Guide_chapter_0110.html

NEW QUESTION 158

The FCoE technology is used in a data center and the MDS switches are configured as Fibre Channel Forwarders. What configuration should be applied to an MDS switch in order to be used as the best switch to connect by the CNAs in the fabric?

- A. fcoe fcf-priority 1024
- B. fcoe fcf-priority 512
- C. fcoe fcf-priority 0
- D. no fcoe fcf-priority

Answer: C

Explanation:

https://www.cisco.com/c/en/us/td/docs/switches/datacenter/nexus5000/sw/fcoe/521n11/b_5k_FCoE_Config_521N11_chapter_011.pdf

NEW QUESTION 162

The EPLD update of the supervisor module has been scheduled for several cisco MDS 9000 switches. What will be the impact of the update?

- A. All control plane traffic is stopped for the duration of the EPLD update and the switch remain operational for the duration of the upgrade.
- B. The redundant supervisor takes over while the EPLD update is in progress and there is no service disruption.
- C. All traffic is stopped for the duration of the EPLD update and the switch is rebooted after the upgrade is completed.
- D. The redundant supervisor takes while the EPLD update is in progress and the switch is rebooted after the upgrade is completed.

Answer: C

Explanation:

An EPLD update of the supervisor module of fabric switches (Cisco MDS 9100, Cisco MDS 9200, and Cisco MDS 9300 Series switches) is disruptive since there is no redundant supervisor to take over while the update is in progress. All traffic through the system is stopped for the duration of the update and the switch is rebooted after the upgrade has completed. The update may take up to 30 minutes to complete.

https://www.cisco.com/c/en/us/td/docs/switches/datacenter/mds9000/sw/6_2/release/notes/epld/epld_rn.html#pg

NEW QUESTION 166

Which statement describes monitoring Fibre Channel traffic on a Cisco UCS 6332 Fabric Interconnect?

- A. Fibre Channel traffic is monitored only on one vHBA per server.
- B. The destination port for monitoring must be an unassigned Fibre Channel port.
- C. The monitoring of Fibre Channel traffic is limited to the default VSAN.
- D. Fibre Channel traffic is capable to be monitored as it is encapsulated as FCoE.

Answer: D

Explanation:

You can monitor Fibre Channel traffic using either a Fibre Channel traffic analyzer or an Ethernet traffic analyzer. When Fibre Channel traffic is monitored with an Ethernet traffic monitoring session, at an Ethernet destination port, the destination traffic is FCoE. The Cisco UCS 6300 Fabric Interconnect supports FC SPAN only on the ingress side. A Fibre Channel port on a Cisco UCS 6248 Fabric Interconnect cannot be configured as a source port.

https://www.cisco.com/c/en/us/td/docs/unified_computing/ucs/ucs-manager/GUI-User-Guides/System-Monitoring/3-2/b_UCSM_GUI_System_Monitoring_Guide_3_2/b_UCSM_GUI_System_Monitoring_Guide_3_2_chapter_01101.pdf

NEW QUESTION 170

What is a characteristic of EPLD updates on Cisco MDS 9000 Series Switches?

- A. EPLD updates are installed only via the Cisco DCNM GUI
- B. EPLD packages update hardware functionality on a device
- C. EPLD bundles are released separately from a Cisco MDS NX-OS release
- D. EPLD updates are nondisruptive to traffic flow

Answer: B

Explanation:

https://www.cisco.com/c/en/us/td/docs/switches/datacenter/mds9000/sw/6_2/release/notes/epld/epld_rn.htm

Introduction

Switches and directors in the Cisco MDS 9000 Series contain several electrical programmable logical devices (EPLDs) that provide hardware functionalities in all of the modules. As of Cisco MDS SAN-OS Release 1.2, EPLD image upgrades are periodically provided to include enhanced hardware functionality or to resolve known issues.

NEW QUESTION 175

An engineer must configure a Nexus 7000 series switch for HSRP on VLAN 100. When fully functional, the router must be the active master. Which set of commands must be used to implement the scenario?

- ☒ feature hsrp
 interface vlan100
 ip address 10.1.1.2 255.255.255.0
 priority 120
 hsrp version 2
 hsrp 1000
 ip 10.1.1.1
- ☐ feature hsrp
 interface vlan100
 ip address 10.1.1.2 255.255.255.0
 priority 100
 hsrp version 2
 hsrp 1000
 ip 10.1.1.1
- ☐ feature-set hsrp
 interface vlan100
 ip address 10.1.1.2 255.255.255.0
 priority 110
 hsrp version 2
 hsrp 1000
 ip 10.1.1.1
- ☐ feature-set hsrp
 interface vlan100
 ip address 10.1.1.2 255.255.255.0
 priority 80
 hsrp version 2
 hsrp 1000
 ip 10.1.1.1

- A. Option A
- B. Option B
- C. Option C
- D. Option D

Answer: A

NEW QUESTION 178

An engineer needs to monitor ingress traffic that arrives at interface Ethernet 1/3 that belongs to a Cisco Nexus 5600 Series Switch. The traffic analyzer machine located at interface Ethernet 1/5 is already monitoring other production, and the traffic analyzer must not be impacted by the traffic captured from the interface Eth1/3. The operations team allocated a traffic budget for the new monitoring session of 1 Gbps to meet this requirement Which set of commands configures the SPAN session?

- ☒ interface Ethernet 1/3
 switchport monitor rate-limit 1G
 monitor session 2
 destination interface ethernet 1/5
 source interface Eth 1/3
- ☐ interface Ethernet 1/3 rx
 switchport mode SD
 switchport monitor rate-limit 1G
 monitor session2
 destination interface ethernet 1/5
- ☐ interface Ethernet 1/3
 monitor rate-limit 1G
 destination interface ethernet 1/5
 source interface rx
 interface Ethernet 1/5
 monitor session 2
 destination interface tx
- ☐ interface Ethernet 1/3
 monitor session 2
 destination interface ethernet 1/5
 source interface rx
 interface Ethernet 1/5
 monitor rate-limit 1G

- A. Option A

- B. Option B
- C. Option C
- D. Option D

Answer: A

Explanation:

Find Matches in This Book		
	switch(config)# interface ethernet slot/port	Enters interface configuration mode for the specified Ethernet interface selected by the slot and port values.
Step 3	switch(config-if)# switchport monitor rate-limit 1G	Specifies that the rate limit is 1 Gbps.
Step 4	switch(config-if)# exit	Reverts to global configuration mode.

Example

This example shows how to limit the bandwidth on Ethernet interface 1/2 to 1 Gbps:

```
switch(config)# interface ethernet 1/2
switch(config-if)# switchport monitor rate-limit 1G
switch(config-if)#
```

Configuring Source Ports

Procedure

	Command or Action	Purpose
Step 1	switch# configure terminal	Enters global configuration mode.
Step 2	switch(config) # monitor session session-number	Enters monitor configuration mode for the specified monitoring session.
Step 3	switch(config-monitor) # source interface type slot/port [rx tx both]	Adds an Ethernet SPAN source port and specifies the traffic direction in which to duplicate packets. You can enter a range of Ethernet, Fibre Channel, or virtual Fibre Channel ports. You can specify the traffic direction to duplicate as ingress (Rx), egress (Tx), or both. By default, the direction is both.

https://www.cisco.com/c/en/us/td/docs/switches/datacenter/nexus5600/sw/system_management/7x/b_5600_System_Mgmt_Config_7x/configuring_span.html

NEW QUESTION 179

A Cisco MDS 9000 series storage Switch has reloaded unexpectedly. Where does the engineer look for the latest core dump file?

- A. /mnt/core
- B. /mnt/pss
- C. /mnt/logs
- D. /mnt/recovery

Answer: B

Explanation:

Graphical user interface, text, application, email Description automatically generated

Saving Cores

You can save cores (from the active supervisor module, the standby supervisor module, or any switching module) to an external CompactFlash (slot 0) or to a TFTP server in one of two ways:

- On demand—Copies a single file based on the provided process ID.
- Periodically—Copies core files periodically as configured by the user.

A new scheme overwrites any previously issued scheme. For example, if you perform another core log copy task, the cores are periodically saved to the new location or file.

Saving the Last Core to Bootflash

This last core dump is automatically saved to bootflash in the /mnt/pss/ partition before the switchover or reboot occurs. Three minutes after the supervisor module reboots, the saved last core is restored from the flash partition (/mnt/pss) back to its original RAM location. This restoration is a background process and is not visible to the user.

https://www.cisco.com/c/en/us/td/docs/switches/datacenter/mds9000/sw/6_2/configuration/guides/system_management/nx-os/sysmgmt_cli_6-x/sys.html
https://www.cisco.com/c/en/us/td/docs/switches/datacenter/mds9000/sw/6_2/configuration/guides/system_management/nx-os/sysmgmt_cli_6-x/sys.html#37039

NEW QUESTION 184

What is an advantage of NFS as compared to Fibre Channel?

- A. NFS enable thin provisioning for LUNs.
- B. NFS provides the dynamic allocation of storage capacity.
- C. NFS removes the impact of IP overhead.
- D. NFS provides direct access to the underlying storage hardware.

Answer: B

Explanation:

<https://www.ciscolive.com/c/dam/r/ciscolive/apjc/docs/2018/pdf/BRKINI-1011.pdf>

NEW QUESTION 187

Refer to the exhibit.

```
ACI-Leaf1# show ip route vrf DATACENTER:DC
10.20.1.0/24, ubest/mbest: 1/0, attached, direct, pervasive
  *via 10.0.8.65%overlay-1, [1/0], 4w3d, static
172.16.100.0/24, ubest/mbest: 1/0
  *via 10.1.168.95%overlay-1, [200/5], 3wod, bgp-132, internal, tag 132 (mpls-vpn)
172.16.99.0/24, ubest/mbest: 1/0
  *via 10.0.1.14, [20/0], 3wod, bgp-132, external, tag 200
```

Which two statements about the routing table of the leaf switch are true? (Choose two.)

- A. The next hop 10.0.1.14 for route 172.16.99.0/24 is the TEP address of a border leaf in ACI.
- B. 172.16.100.0/24 is a BD subnet in ACI.
- C. The next hop 10.0.8.65 for route 10.20.1.0./24 is the TEP address of a border leaf in ACI.
- D. The next hop 10.1.168.95 for route 172.16.100.0/24 is the TEP address of a border leaf in ACI.
- E. 10.20.1.0./24 is a BD subnet in ACI.

Answer: DE

NEW QUESTION 192

Which component is disrupted when the cisco integrated Management controller is upgraded on a cisco UCS series server?

- A. Cisco UCS Manager
- B. SAN traffic
- C. KVM sessions
- D. Data traffic

Answer: C

NEW QUESTION 194

An engineer updated firmware on Fabric Interconnects and activates it. However, the endpoint fails to boot from the new firmware image. What is expected to occur in this case?

- A. The system defaults to the backup image version
- B. The system defaults to and boots into GOLD firmware image
- C. The system defaults to the GOLD firmware image
- D. The system defaults to and boots into kickstart image

Answer: A

Explanation:

https://www.cisco.com/c/en/us/td/docs/unified_computing/ucs/ucs-manager/CLI-User-Guides/Firmware-Mgmt/4-0/b_UCSM_CLI_Firmware_Management_Guide_4-0/b_UCSM_CLI_Firmware_Management_Guide_4-0_chapter_011.html

NEW QUESTION 199

An engineer must perform a software upgrade on a production Cisco Nexus 7000 Series Switch. Before the upgrade activity, the requirement is for all ports to be shut down and routing protocols to terminate gracefully. Which feature must be used to meet these requirements?

- A. Configuration Profile
- B. Maintenance Mode Profile
- C. Switch Profile
- D. Service Profile Template

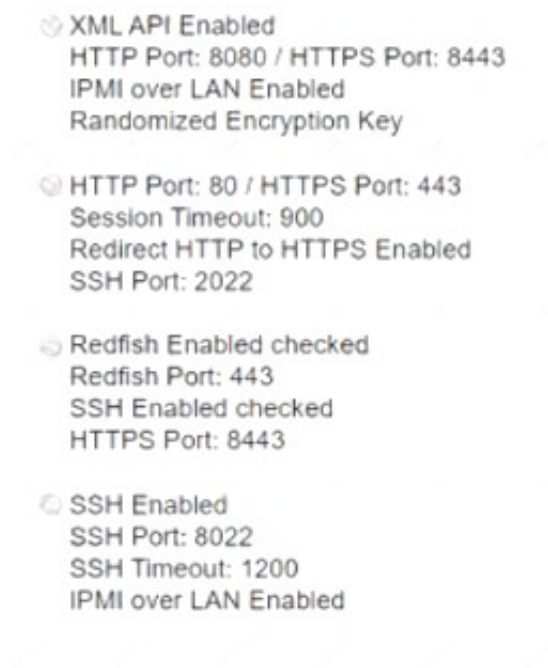
Answer: B

NEW QUESTION 204

An engineer implements a Cisco UCS C-Series Server that must adhere to these security requirements:

- Unencrypted communication must be disabled.
- The session timeout must not exceed 15 minutes.
- Unencrypted traffic must be automatically diverted.
- CLI-based management must use nondefault ports.

Which configuration set meets these requirements?



- A. Option A
- B. Option B
- C. Option C
- D. Option D

Answer: B

NEW QUESTION 208

Which command reduces the amount of time it takes to complete the ISSU on a Cisco Nexus 7000 series switch that has dual supervisor modules and two I/O modules?

- A. install all kickstart <image>system<image>parallel
- B. install all epld bootflash:<image>
- C. install all epld bootflash:<image>
- D. install all kickstart<image>system<image>

Answer: A

Explanation:

Graphical user interface, text, application Description automatically generated

Parallel Upgrade

Parallel Upgrade with I/O Modules

Starting with Cisco NX-OS Release 5.2(1), multiple linecards can be simultaneously upgraded, and the infrastructure support is available. This decreases the ISSU time when compared with an ISSU upgrade that is done serially (one card at a time).

To start a parallel upgrade, use the following command: **install all kickstart image system image parallel**

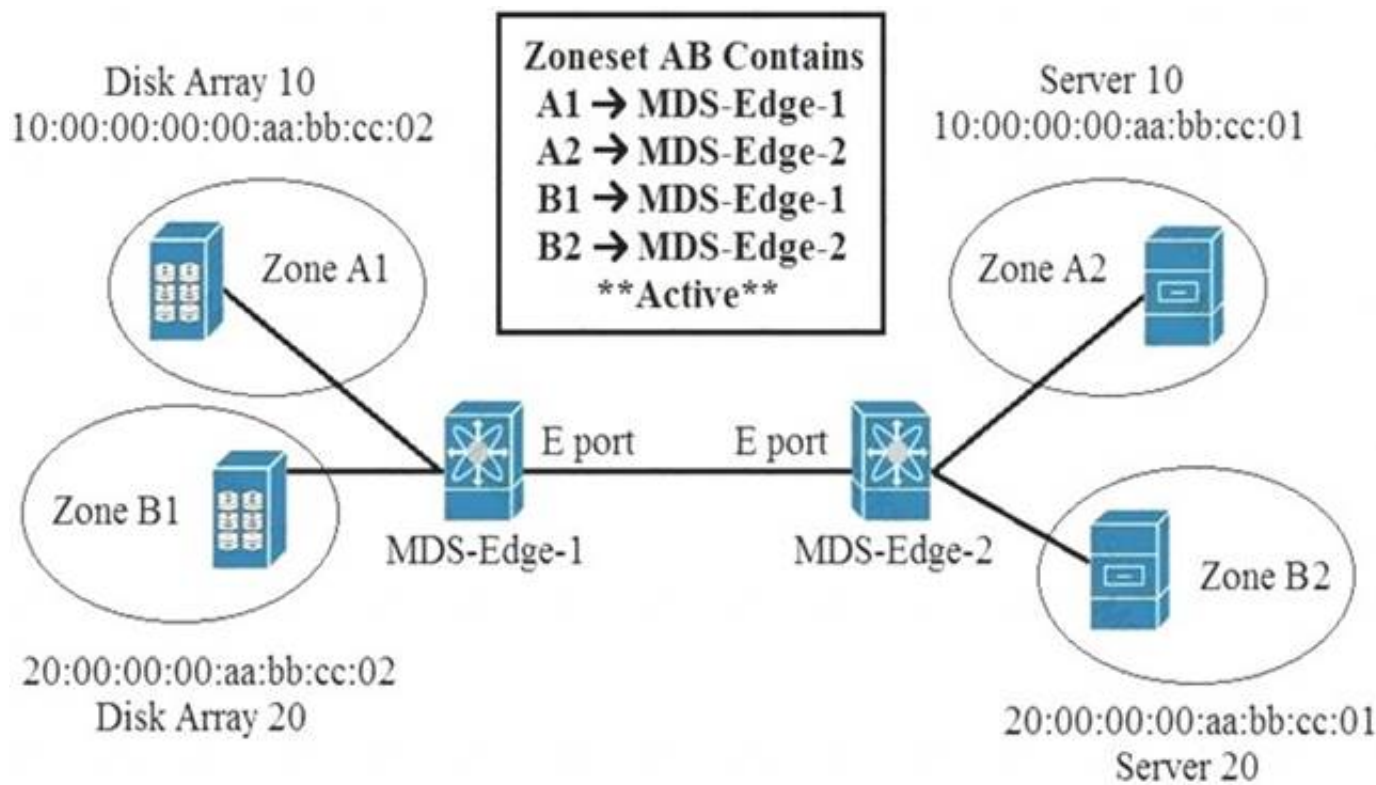
Up to three linecards can be upgraded in parallel with this command. During the upgrade process, the upgrade of the linecards is displayed in the output as follows:

```
Non-disruptive upgrading.
[#          ] 0%
Module 5 upgrade completed successfully.
-
Module 3 upgrade completed successfully.
```

https://www.cisco.com/c/en/us/td/docs/switches/datacenter/nexus7000/sw/upgrade/guide/cisco_nexus7000_software_upgrade_and_downgrade_guide_8x.html
https://www.cisco.com/c/en/us/td/docs/switches/datacenter/sw/7_x/nx-os/upgrade/guide/b_Cisco_Nexus_7000_Series_NX-OS_Software_Upgrade_and_Downgrade_Guide_Release_7-x.html#d54e307a1635

NEW QUESTION 209

Refer to the exhibit.



An engineer is implementing zoning on two Cisco MDS switches. After the implementation is finished, E Ports that connect the two Cisco MDS switches becomes isolated. What is wrong with the implementation?

- A. E Ports on both MDS switches must be configured as F ports for the zoning to function.
- B. Zones are local to the MDS switch and name service must be used to activate the connection between E ports.
- C. Different zone set names must be configured on both MDS switches.
- D. Zones must have the same name on both MDS switches for the E ports to function.

Answer: D

Explanation:

When two switches in a fabric are merged using a TE or E port, these TE and E ports may become isolated when the active zone set databases are different between the two switches or fabrics." https://www.cisco.com/c/en/us/td/docs/switches/datacenter/mds9000/sw/6_2/configuration/guides/fabric/nxos/n

NEW QUESTION 213

Drag and drop the mechanisms to collect data from a network from the left onto their characteristics on the right

CLI-based scripts	Polling can take 5-10 minutes.
SNMP	Unstructured and susceptible to change and scripts failure.
syslog	It sends data from the device to a specific endpoint, for instance, JSON or by using Google protocol buffers.
telemetry	It pushes messages in the format "seq no:timestamp: %facility-severity MNEMONIC:description" and has limits in scale and efficiency.

- A. Mastered
- B. Not Mastered

Answer: A

Explanation:

Table Description automatically generated with low confidence

NEW QUESTION 217

An engineer must implement a Cisco UCS system at a customer site. One of the requirements is to implement SAN boot. The storage system maps the source WWPN to a unique LUN. Which method does Cisco recommend to configure the SAN boot?

- A. Create a SAN boot policy in which every initiator is mapped to the same target LUN.
- B. Define the vHBAs as bootable and leave the default values on the target definition.
- C. Define the vHBAs as bootable and leave the boot target definition empty.
- D. Create a SAN boot policy in which every initiator is mapped to a different target LUN.

Answer: A

Explanation:

While you have multiple zones consisting of FC vHBAs and storage target wwpns for SAN Fabrics A and B, you are ultimately booting off of the same boot LUN. Multiple paths to get to the same boot device which correspond with the same LUN ID.
https://www.cisco.com/c/en/us/td/docs/unified_computing/ucs/ts/guide/UCSTroubleshooting/UCSTroubleshooting_chapter_0110.html#r_sanarrayconfigurationchecklist

NEW QUESTION 222

What is a benefit of using Cisco Tetration?

- A. It collects telemetry data from servers and then uses software sensors to analyze flow information.
- B. It collects near-real time data from servers and inventories the software packages that exist on servers.
- C. It collects policy compliance data and process details.
- D. It collects enforcement data from servers and collects interpacket variation.

Answer: A

NEW QUESTION 223

A network engineer must create an EEM script that saves a copy of the running configuration on bootflash and writes a message to syslog when a user saves the configuration to a Cisco Nexus switch. Which configuration set should be applied to complete this task?

- ☐ event manager applet local- backup
 event cli match "copy running-config startup-config"
 action 1 cli copy running-config bootflash:/current_config.txt
 action 2 syslog msg Configuration saved and copied to bootflash
- ☐ event manager applet local- backup
 event cli match "write memory"
 action 1 cli copy running-config bootflash:/current_config.txt
 action 2 snmp-trap strdata "Configuration saved and copied to bootflash"
- ☐ event manager applet local- backup
 event cli match "copy running-config startup-config"
 action 1 cli copy running-config bootflash:/current_config.txt
 action 2 syslog msg Configuration saved and copied to bootflash
 action 3 event-default
- ☒ event manager applet local- backup
 event cli match "write memory"
 action 1 cli copy running-config bootflash:/current_config.txt
 action 2 syslog msg Configuration saved and copied to bootflash
 action 3 event-default

- A. Option A
- B. Option B
- C. Option C
- D. Option D

Answer: C

Explanation:

The command write memory is not valid in NX-OS
 The "event-default"

If you want to allow the triggered event to process any default actions, you must configure the EEM policy to allow the default action. For example, if you match a CLI command in a match statement, you must add the event-default action statement to the EEM policy or EEM will not allow the CLI command to execute.

NEW QUESTION 226

Refer to the exhibit.

```
OTV-Site1# show otv
OTV Overlay Information
Site Identifier 0000.0000.0111
Overlay interface Overlay200
VPN name: Overlay200
VPN state: UP
Extended vlans: 178 2500-2563 (Total:65)
Join interface(s): Eth1/2 (20.1.1.1)
Site vlan: 1999 (up)
AED-Capable: Yes
Capability: Unicast-Only
Is Adjacency Server: Yes
Adjacency Server(s): 20.1.1.1/20.2.1.1
```

A network engineer is setting up a multihomed OTV network. The first site has been set up with a primary and secondary adjacency server. Which configuration

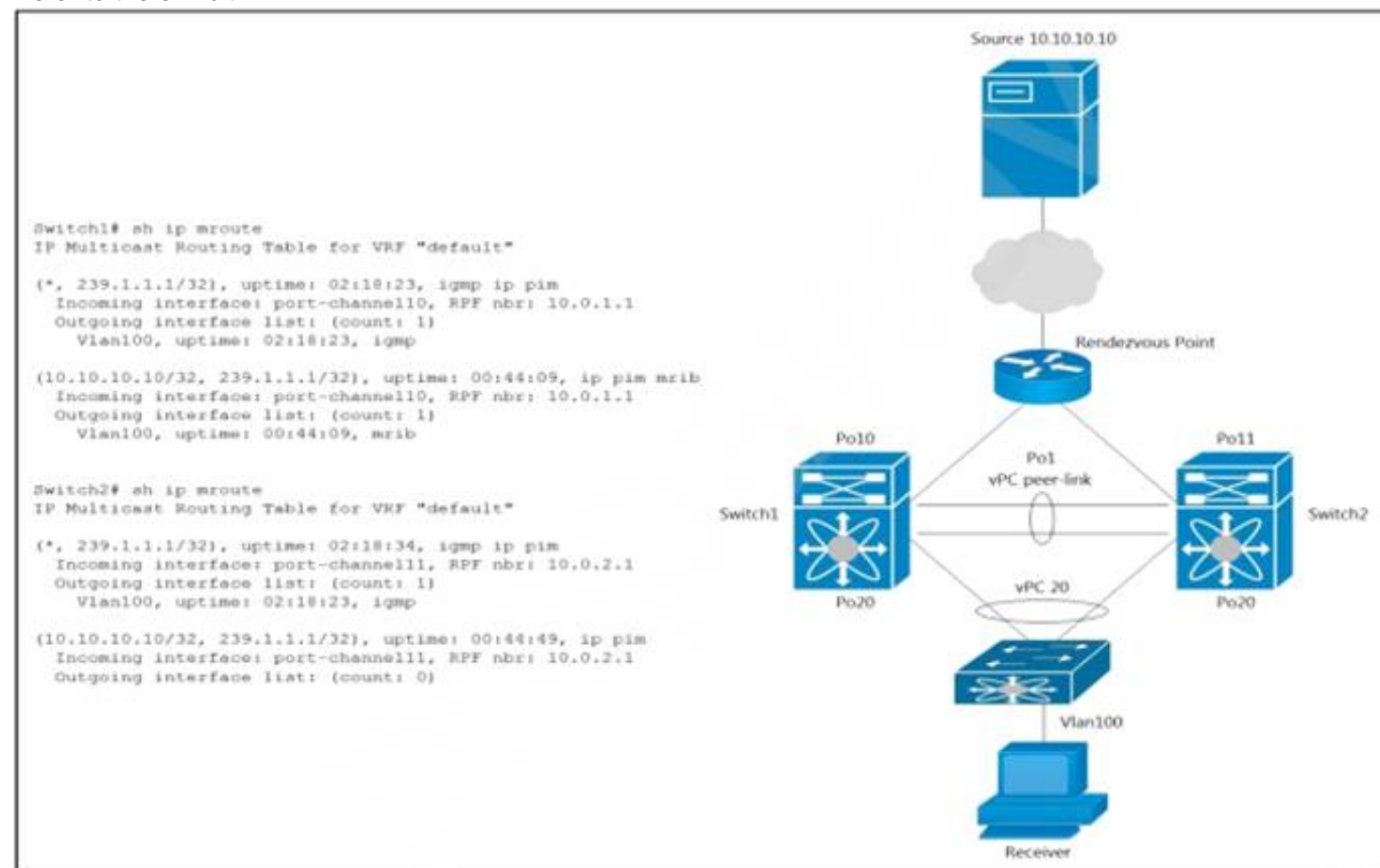
must be added on the remote OTV AEDs site?

- A. interface Overlay200otv join-interface Ethernet1/2 otv extend-vlan 178, 2500-2563otv use-adjacency-server 20.1.1.1 unicast-only
- B. interface Overlay200otv join-interface Ethernet1/2 otv extend-vlan 178, 2500-2563otv adjacency-server unicast-only
- C. interface Overlay200otv join-interface Ethernet1/2 otv extend-vlan 178, 2500-2563
- D. interface Overlay200otv join-interface Ethernet1/2 otv extend-vlan 178, 2500-2563otv use-adjacency-server 20.1.1.1 20.2.1.1 unicast-only

Answer: D

NEW QUESTION 229

Refer to the exhibit.



A host with a source address 10.10.10.10 sends traffic to multicast group 239.1.1.1. How do the vPC switches forward the multicast traffic?

- A. If multicast traffic is received on Switch1 over the vPC peer-link, the traffic is dropped
- B. If multicast traffic is received on Po10 Switch1, the traffic is forwarded out on Po1 and Po20
- C. If multicast traffic is received on Po11 Switch2, the traffic is forwarded out only on Po20
- D. If multicast traffic is received on Po11 Switch2, the traffic is dropped.

Answer: D

Explanation:

https://www.cisco.com/c/en/us/support/docs/ip/multicast/214140-multicast-forwarding-in-vpc-based-on-loc.htm

NEW QUESTION 233

An engineer requires a solution to automate the configuration and deployment of remote network devices for a customer. The engineer must keep these considerations in mind:

- The customer's environment is based on industry-accepted standards and requires a solution that meets these standards.
- The security requirements mandate the use of a secure transport mechanism between the automation software and target devices such as SSH or TLS.
- The solution must be based on a human-readable and easy to parse format such as XML or JSON. Which solution must be used to meet these requirements?

- A. SNMP
- B. REST API
- C. Ansible
- D. NETCONF

Answer: D

Explanation:

https://www.cisco.com/c/en/us/products/collateral/ios-nx-os-software/ios-xe/nb-06-cisco-ios-xe-faq-en.html

NEW QUESTION 237

Drag and drop the Hyperflex characteristics from the left onto the appropriate Hyper Hex node types on the right.

uses only SSD drives for caching	Hybrid Node
contains HDDs for the capacity layer	
uses SSD drives or NVMe storage for caching	
has SSD drives for the capacity layer	All Flash Node
recommended for repeatable and sustainable high performance, especially for scenarios with a larger working set of data	
recommended for capacity-sensitive solutions, lower budgets, and fewer performance-sensitive applications	

- A. Mastered
 B. Not Mastered

Answer: A

Explanation:

uses only SSD drives for caching	Hybrid Node
contains HDDs for the capacity layer	
uses SSD drives or NVMe storage for caching	
has SSD drives for the capacity layer	All Flash Node
recommended for repeatable and sustainable high performance, especially for scenarios with a larger working set of data	
recommended for capacity-sensitive solutions, lower budgets, and fewer performance-sensitive applications	

NEW QUESTION 240

An engineer must create an EPG called "Test". The configuration request should succeed if the Tenant called "Tenant" and the application profile called "Test" exist. The firewall policy allows only the HTTP connectivity to APIC from the user's computer. Which action accomplishes this goal?

- ☐ Send <fvAEPg dn="uni/tn-Test/ap-Test/epg-Tenant" status="created"/> to APIC payload using HTTP PUT to the Cisco APIC.
- ☐ Send <fvAEPg dn="uni/tn-Test/ap-Test/epg-Tenant" status="created"/> to APIC payload using HTTP POST to the Cisco APIC.
- ☐ Send <fvAEPg dn="uni/tn-Tenant/ap-Test/epg-Test" status="created"/> to APIC payload using HTTP POST to the Cisco APIC.
- ☐ Send <fvAEPg dn="uni/tn-Tenant/epg-Test/ap-Test" status="created"/> to APIC payload using HTTP PUT to the Cisco APIC.

- A. Option A
- B. Option B
- C. Option C
- D. Option D

Answer: C

NEW QUESTION 241

Drag and drop the characteristics from the left onto the correct storage systems on the right.

expensive and complex to manage

moderately expensive and simple to configure

most resilient, highly scalable, and high-performance storage

appliance providing file system access

lacks scalability, performance, and advanced features

NAS

SAN

- A. Mastered
- B. Not Mastered

Answer: A

Explanation:

Graphical user interface Description automatically generated with medium confidence
2,4,5 – NAS 1,3 - SAN

NEW QUESTION 242

Refer to the exhibit.

```
#!/bin/env python
from cli import *

[redacted]

x= cli('show running-config | include address')
y= x.find('192.168.101.191/25')
z= x.find('192.168.101.192/25')
if y != -1:
    cli ('copy tftp://192.168.101.253/initdev1.cfg bootflash: vrf management')
    cli ('copy bootflash:initdev1.cfg scheduled-config')
if z != -1:
    cli ('copy tftp://192.168.101.253/initdev2.cfg bootflash: vrf management')
    cli ('copy bootflash:initdev2.cfg scheduled-config')
cli ('copy running-config startup-config')
```

Which information must be added to the script to complete the POAP operation on the Cisco Nexus 9000 Series Switch?

- ☒ API token d41d8cd98f00b40960045298ecf8427e of the Cisco APIC.
- ☐ MD5SUM 41d8cd98f00b204e9800998ecf8427e of the Python code.
- ☐ API token d41d8cd98f00b77986331998ecf8427e of the Cisco Nexus 9000 Series Switch.
- ☐ MD5SUM d41d8cd98f00b20449800998ecf8427e of the script file.

- A. Option A
- B. Option B
- C. Option C
- D. Option D

Answer: D

NEW QUESTION 245

An engineer is implementing a Cisco ACI fabric and must use static VLAN range as part of a VMM deployment. The static VLAN must be incorporated into the dynamic VLAN pool. The existing VLAN pool is set for dynamic allocation. Which action accomplishes this goal?

- A. Add the VLAN to the pool configured with Inherit Allocation Mode from parent.
- B. Change the existing VLAN pool to static allocation mode.
- C. Add a static VLAN allocation range to the VLAN pool.
- D. Create a static reservation within the dynamic VLAN pool.

Answer: C

NEW QUESTION 248

A network architect considers a Cisco HyperFlex design solution for a company. The proposed solution is for a virtual environment that is not performance-sensitive, but the solution must have high storage capacity and a low cost. Which Cisco HyperFlex storage configuration should be used?

- A. All-Flash
- B. Hybrid
- C. All-SAN
- D. All-NVMe

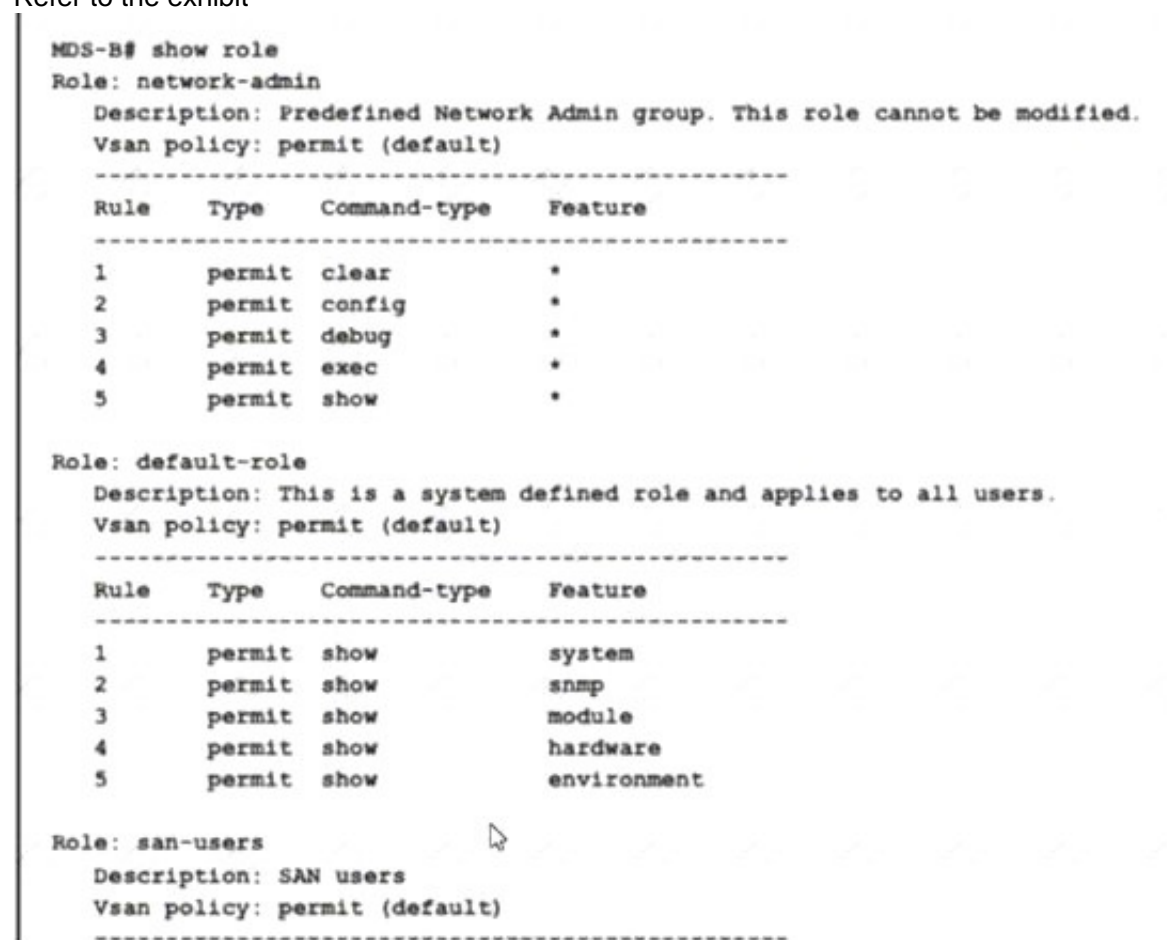
Answer: B

Explanation:

<https://www.cisco.com/c/en/us/products/collateral/hyperconverged-infrastructure/hyperflex-hx-series/white-pap> Hybrid contains HDD for capacity.

NEW QUESTION 251

Refer to the exhibit



```

MDS-B# show role
Role: network-admin
Description: Predefined Network Admin group. This role cannot be modified.
Vsan policy: permit (default)
-----
Rule    Type    Command-type    Feature
-----
1       permit  clear           *
2       permit  config          *
3       permit  debug           *
4       permit  exec            *
5       permit  show            *

Role: default-role
Description: This is a system defined role and applies to all users.
Vsan policy: permit (default)
-----
Rule    Type    Command-type    Feature
-----
1       permit  show            system
2       permit  show            snmp
3       permit  show            module
4       permit  show            hardware
5       permit  show            environment

Role: san-users
Description: SAN users
Vsan policy: permit (default)
-----

```

A network engineer created a new role to be assigned to the SAN users. The requirement is for users to have these characteristics:

- permitted to show access to the system, SNMP, module, and hardware information
- permitted to run debug zone and exec fcping commands
- restricted from accessing show feature environment command

Which configuration set meets these requirements?

- A. Option A
- B. Option B
- C. Option C
- D. Option D

Answer: D

NEW QUESTION 256

Drag and drop the steps on the left onto the order that they must be implemented on the right to recover a fabric interconnect when there is no working image on the bootflash.

Copy the main image files.	step 1
Configure the management interfaces.	step 2
Boot the kickstart image using TFTP.	step 3
Install the files.	step 4

- A. Mastered
- B. Not Mastered

Answer: A

Explanation:

Copy the main image files.	Boot the kickstart image using TFTP.
Configure the management interfaces.	Configure the management interfaces.
Boot the kickstart image using TFTP.	Copy the main image files.
Install the files.	Install the files.

NEW QUESTION 257

Which statement about the impact of a rolling EPLD upgrade on a Cisco MDS 9000 Series Switch is true?

- A. All modules on the switch are disrupted.
- B. An EPLD upgrade is nondisruptive.
- C. Only the modules that are being upgraded are disrupted.
- D. The upgrade can be performed from the standby supervisor module.

Answer: C

Explanation:

https://www.cisco.com/c/en/us/td/docs/switches/datacenter/mds9000/sw/6_2/release/notes/epld/epld_rn.html#pgfId-241919

NEW QUESTION 258

What is the impact of an EPLD upgrade on a Cisco MDS 9000 Series Switch?

- A. The active supervisor traffic is disrupted.
- B. The upgrade disrupts the management connectivity to the switch.
- C. The standby supervisor module reloads multiple times.
- D. The upgrade process disrupts only the module that is being upgraded.

Answer: D

NEW QUESTION 262

Drag and drop the keywords onto the URL request to collect all the subnets configured under tenant Production using a REST API. Not all options are used.

https://{apic_ip}}/api/

/uni/tn-Production.json?

=

&

=fvSubenet

target-subtree-class

query-target-filter

query-target

children

subtree

class

mo

- A. Mastered
B. Not Mastered

Answer: A

Explanation:
Graphical user interface, text Description automatically generated

NEW QUESTION 266
Refer to the exhibit.

```
; Router 1 configuration
interface loopback1
  ip address 10.10.32.121/30
  ip ospf network point-to-point
  ip router ospf 1 area 0.0.0.0
  ip pim sparse-mode

ip pim rp-address 10.10.32.122 group-list 225.0.0.0/8 bi-dir
```

In a bidirectional PIM network using Phantom RP as an RP redundancy mechanism, two Cisco NX-OS routers have these requirements:

- R1 must be the active RP.
- R2 must be the backup RP that is used only if R1 is not reachable

Drag and drop the configuration steps to complete the configuration for Router 2. Not all configuration steps are used.

; Router 2 configuration

interface loopback1

ip address

ip ospf network

ip router ospf 1 area 0.0.0.0

ip pim

ip pim rp-address

group-list 225.0.0.0/8 bi-dir

10.10.32.121/32

10.10.32.121

point-to-point

broadcast

10.10.32.121/29

10.10.32.122

sparse-mode

dense-mode

- A. Mastered
B. Not Mastered

Answer: A

Explanation:

Graphical user interface, text, application Description automatically generated

Answer :

ip address 10.10.32.121/29

ip ospf network point-to-point

router ospf 1 area 0.0.0.0

ip pim sparse-mode

ip pim rp-address 10.10.32.122 group-list 255.0.0.0/8 bi-dir

NEW QUESTION 270

An engineer installed a new Nexus switch with the mgm0 interface in vrf management. Connectivity to the rest of the network needs to be tested from the guest shell of the NX-OS. Which command tests connectivity from the shell of the NX-OS?

- ☐ [guestshell@guestshell ~]\$ ping 173.37.145.84 vrf management
- ☐ [guestshell@guestshell ~]\$ chvrf management ping 173.37.145.84
- ☒ [guestshell@guestshell ~]\$ iping vrf management ip 173.37.145.84
- ☐ [guestshell@guestshell ~]\$ dohost "ping vrf management 173.37.145.84"

- A. Option A
- B. Option B
- C. Option C
- D. Option D

Answer: B

NEW QUESTION 275

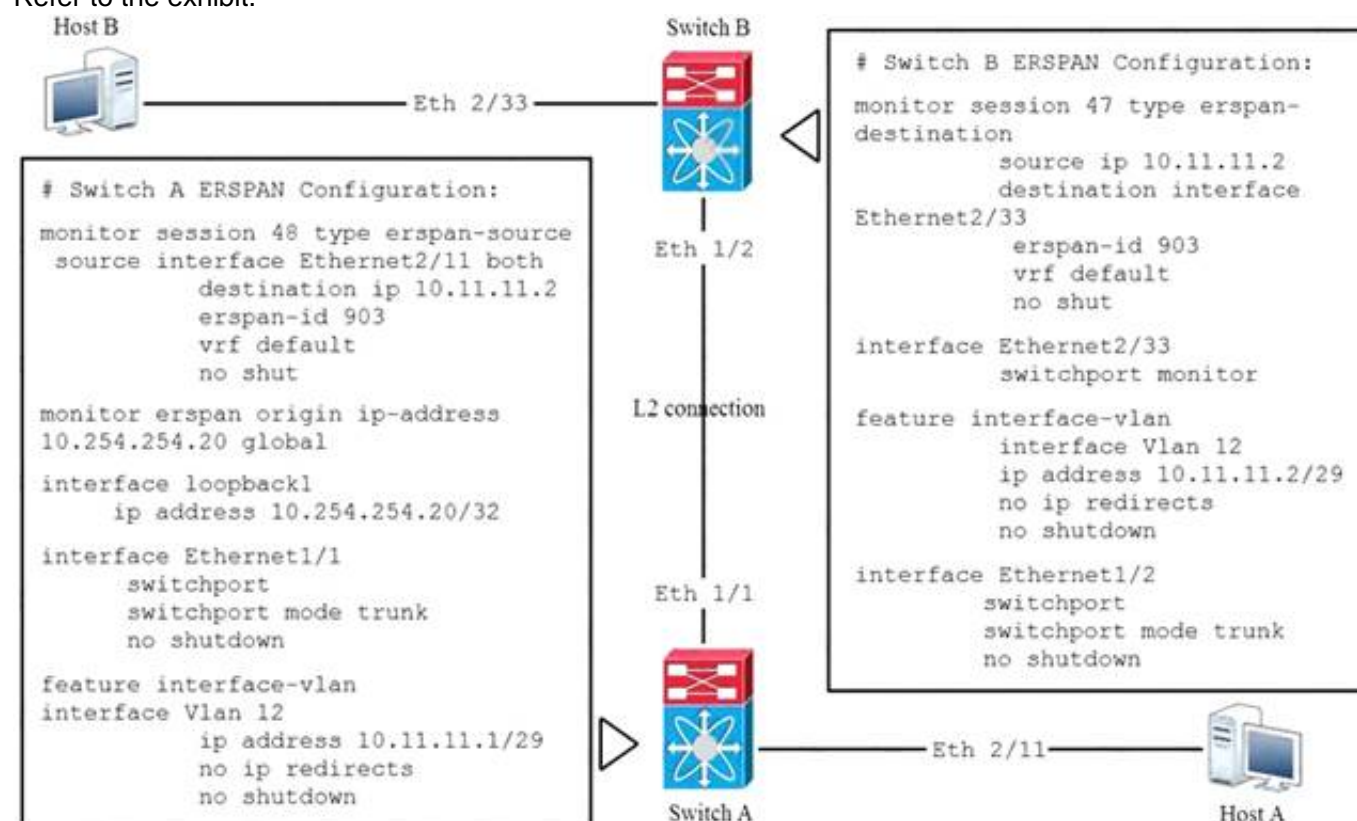
Which feature is supported with an In-Service Software Upgrade on a Cisco Nexus 9000 Series Switch?

- A. configuration changes during an upgrade
- B. nondisruptive upgrades via nonstop forwarding
- C. zero downtime downgrades via dual supervisor modules
- D. upgrades to Individual modules and line cards

Answer: B

NEW QUESTION 277

Refer to the exhibit.



Which statement about the ERSPAN configuration in this environment is true.

- A. Host A is the source of ERSPAN spanned traffic and host B is the traffic analyzer.
- B. Host B is the source of ERSPAN spanned traffic and host A is the traffic analyzer.
- C. The session number of the source of ERSPAN spanned traffic must have a session ID of 48 for the traffic analyzer to receive the traffic.

D. The session number of the source of ERSPAN spanned traffic must have a session ID of 47 for the traffic analyzer to receive the traffic.

Answer: A

NEW QUESTION 279

An engineer must configure Cisco IMC server management NIC for autonegotiation. Which setting should be selected?

- A. Cisco card
- B. shared LOM
- C. dedicated
- D. shared LOM EXT

Answer: C

Explanation:

https://www.cisco.com/c/en/us/td/docs/unified_computing/ucs/c/sw/cli/config/guide/4_0/b_Cisco_UCS_CSeries_CLI_Configuration_Guide_40/b_Cisco_UCS_CSeries_CLI_Configuration_Guide_40_chapter_01000.html

<https://www.cisco.com/c/en/us/support/docs/servers-unified-computing/unified-computing-system/200221-Auto-negotiation-not-enabling-by-default.html>

NEW QUESTION 281

An engineer must implement private VLANs for a group of Cisco UCS 8-Series servers. The primary VLAN is present, But the secondary VLAN must Be added to Both fabrics. Which configuration set accomplishes this task?

- ☒ UCS-A# scope eth-uplink
UCS-A /eth-uplink # create vlan vlan1981 1981
UCS-A /eth-uplink/vlan* # set sharing none
- ☐ UCS-A# scope eth-uplink
UCS-A /eth-uplink # create vlan vlan1981 1981
UCS-A /eth-uplink/vlan* # set sharing isolated
- ☐ UCS-A# scope eth-uplink
UCS-A /eth-uplink # scope fabric a
UCS-A /eth-uplink/fabric # create vlan vlan1981 1981
UCS-A /eth-uplink/fabric/vlan* # set sharing private
- ☐ UCS-A# scope eth-uplink
UCS-A /eth-uplink # scope fabric a
UCS-A /eth-uplink/fabric # create vlan vlan1981 1981
UCS-A /eth-uplink/fabric/vlan* # set sharing secondary

- A. Option A
- B. Option B
- C. Option C
- D. Option D

Answer: B

NEW QUESTION 282

Refer to the exhibit.

```
switch# show vpc brief
Legend:
          (*) - local vPC is down, forwarding via vPC peer-link

vPC domain id          : 10
Peer status             : peer adjacency formed ok
vPC keep-alive status   : peer is alive
Configuration consistency status: success
Type-2 consistency status : success
vPC role                : primary
Number of vPCs configured : 1
Peer Gateway            : Enabled
Dual-active excluded VLANs : -

vPC Peer-link status
-----
id   Port   Status Active vlans
--   -
1    Po20   up     100-105

vPC status
-----
id   Port   Status Consistency Reason           Active vlans
--   -
7    Po7    up     success success           100-104
8    Po8    up     success success           100-102
9    Po9    up     success success           100-103
```

Which VLANs are capable to be assigned on vPC interfaces?

- A. 100-103
- B. 100-104

- C. 100-102
- D. 100-105

Answer: D

NEW QUESTION 283

An engineer must export the Cisco UCS Manager configuration for backup purposes. The requirement is to export the configuration that contains the AAA and RBAC configuration Also the file must be stored a human-readable format 'Much backup type must be selected to meet these requirements?

- A. logical configuration
- B. system configuration
- C. fun state
- D. all configuration

Answer: B

NEW QUESTION 286

Refer to the exhibit.

```
N7Switch# sh run | section callhome
callhome
email-contact admin@acme.com
phone-contact +1-800-123-4567
streetaddress 111 Somestreet st. Sometown, Somewhere
destination-profile full_txt email-addr netadmin@acme.com
transport email smtp-server 192.168.1.25 port 25
transport email from N7Switch@acme.com
enable
alert-group Inventory user-def-cmd show logging last 100
N7Switch#
```

A network engineer is configuring the Smart Call Home feature on a Cisco Nexus Series Switch. An email must be generated that contains the last 100 lines of the log every time a new piece of hardware is inserted into the chassis. Which command must be added to the configuration to receive the email?

- A. alert-group Linecard-Hardware user-def-cmd show logging last 100
- B. destination-profile Operations alert-group Inventory
- C. destination-profile Operations message-level 2
- D. alert-group Operations user-def-cmd show logging last 100

Answer: A

NEW QUESTION 287

Refer to the exhibit.

```
UCS-A# scope adapter 1/1/1
UCS-A# /chassis/server/adapter # show image
Name                               Type      Version    State
-----
ucs-m81kr-vic.2.2.1b.bin  Adapter  2.2(1b)    Active

UCS-A# /chassis/server/adapter # update firmware 2.2(1b)
UCS-A# /chassis/server/adapter* # activate firmware 2.2(1b)
set-startup-only
UCS-A# /chassis/server/adapter* # commit-buffer
UCS-A# /chassis/server/adapter #
```

What is the result of this series of commands?

- A. It reboots the server immediately.
- B. It verifies the firmware update on the server.
- C. It activates the firmware on the next adapter boot.
- D. It updates the firmware on adapter 1/1/1 immediately.

Answer: C

Explanation:

https://www.cisco.com/c/en/us/td/docs/unified_computing/ucs/ucs-manager/CLI-User-Guides/Firmware-Mgmt/ Graphical user interface, text, application, email
 Description automatically generated

Step 6	UCS-A /chassis/server/adapter # activate firmware version-num [set- startup-only]	Activates the selected firmware version on the adapter. Use the set-startup-only keyword if you want to move the activated firmware into the pending-next-boot state and not immediately reboot the server. The activated firmware does not become the running version of firmware on the adapter until the server is rebooted. You cannot use the set-startup-only keyword for an adapter in the host firmware package.
--------	--	---

NEW QUESTION 290

An engineer must configure the HSRP protocol to implement redundancy using two Cisco Nexus Series Switches In addition, the HSRP must meet these requirements

- Switch1 must retain the primary role if switch2 goes offline
 - Switch1 must retain the primary role until normal conditions are restored.
 - Switch1 and switch2 must ensure that the routing tables are converged before taking the active role
 - switch2 must retain the primary role if the default gateway is not reachable
- Drag and drop the configuration commands from the right to the left to meet the requirements. The commands are used more than once Not all commands are used

```
! switch1
track 100 ip route 0.0.0.0/0 reachability

interface ethernet 1/1
ip 209.165.200.226/27

hsrp 200
ip 209.165.200.225
priority 210
[ ]
[ ]
no shutdown

! switch2
track 100 ip route 0.0.0.0/0 reachability

interface ethernet 1/1
ip 209.165.200.227/27

hsrp 200
ip 209.165.200.225
[ ]
[ ]
no shutdown
```

- preempt delay minimum 30
- track 100 decrement 200
- track 200 decrement200
- preempt sync 30

- A. Mastered
- B. Not Mastered

Answer: A

Explanation:

```
! switch1
track 100 ip route 0.0.0.0/0 reachability

interface ethernet 1/1
ip 209.165.200.226/27

hsrp 200
ip 209.165.200.225
priority 210
track 100 decrement 200
preempt delay minimum 30
no shutdown

! switch2
track 100 ip route 0.0.0.0/0 reachability

interface ethernet 1/1
ip 209.165.200.227/27

hsrp 200
ip 209.165.200.225
track 100 decrement 200
preempt delay minimum 30
no shutdown
```

- preempt delay minimum 30
- track 100 decrement 200
- track 200 decrement200
- preempt sync 30

NEW QUESTION 294

An engineer must configure the HSRP protocol between two Cisco Nexus 9000 Series Switches. This configuration is present on Nexus A.

```
! Nexus A
key chain NHRP-KEYS
key 1010
key-string 7 072a43795c1d0c4050883003163b3e2121a720361a021e11
accept-lifetime 00:00:00 Jan 01 2021 23:59:59 Aug 31 2021
send-lifetime 00:00:00 Jan 01 2021 23:59:59 Jul 31 2021
key 1020
key-string 7 086f43cd5c150c1702630203163b3e2221a520261a011a12
accept-lifetime 00:00:00 Jul 01 2021 23:59:59 Dec 31 2021
send-lifetime 00:00:00 Jul 01 2021 23:59:59 Dec 31 2021
interface ethernet 1/1
ip 209.165.200.226/27
hsrp 200
priority 201
ip 209.165.200.225
-- missing output --
no shutdown
```

The final HSRP configuration must meet these requirements

- The HSRP communication must be secured on both switches
- Both switches must support more than 300 groups

Which two commands must be added to the HSRP configuration on Nexus A to complete these requirements? (Choose two)

- A. hsrp version 1
- B. hsrp version 2
- C. authentication text 1020
- D. authenticate md5 key-chain NHRP-KEYS
- E. authentication text 1010

Answer: BD

NEW QUESTION 295

An engineer needs to connect Cisco UCS Fabric Interconnect (FI) to an external storage array. Due to budget limitations, the engineer must connect a Cisco UCS FI directly to an FC storage port. Which two actions must be taken to complete this connection? (Choose two.)

- A. Configure the fabric interconnect in FC switch mode.
- B. Set FC zoning to disabled when creating the VSAN
- C. Create a storage connection policy.
- D. Configure the fabric interconnect in end-host mode,
- E. Create the required VSAN in the SAN cloud.

Answer: AE

NEW QUESTION 297

A Cisco ACI engineer must configure an access port on a Cisco ACI leaf switch. The access policy should be configured so that it supports L3out connectivity concurrently with several EPGs that are mapped to this interface with the static port method. How should the access policy be configured?

- A. by linking the interface policy group to multiple Attachable Access Entity Profiles
- B. with a single Attachable Access Entity Profile that is linked to the corresponding routed domain and physical domain
- C. with two interface policy groups that are linked to the same interface profile port selector
- D. by mapping a single physical domain, mapped to the L3out and EPG interfaces

Answer: D

NEW QUESTION 298

Which data interchange format is presented in this output?

```
{
  "totalCount": "1",
  "imdata": [
    {
      "fabricNode": {
        "attributes": {
          "address": "10.0.40.65",
          "apicType": "apic",
          "dn": "topology/pod-1/node-201",
          "id": "201",
          "lastStateModTs": "2020-09-07T10:20:57.236+00:00",
          "modTs": "2020-09-07T10:21:18.912+00:00",
          "model": "N9K-C9336PQ",
          "monPolDn": "uni/fabric/monfab-default",
          "role": "spine",
          "serial": "FDO39106329J",
          "uid": "0",
          "vendor": "Cisco Systems, Inc",
        }
      }
    }
  ]
}
```


- A. XML
- B. YAML
- C. JSON
- D. CSS

Answer: C

NEW QUESTION 300

What are two types of FC/FCoE oversubscription ratios? (Choose two.)

- A. server storage to end-node count
- B. port bandwidth to uplink bandwidth
- C. edge ISL bandwidth to core ISL bandwidth
- D. host bandwidth to storage bandwidth
- E. switch processing power to end-node processing power

Answer: CD

Explanation:

<https://www.ciscolive.com/c/dam/r/ciscolive/us/docs/2017/pdf/BRKDCN-1121.pdf>

https://www.cisco.com/c/en/us/td/docs/switches/datacenter/nexus5000/sw/operations/n5k_fcoe_ops.html

NEW QUESTION 302

An engineer must start a software upgrade on a Cisco Nexus 5000 Series Switch during a zone merge. What is the result of this action?

- A. The zone merge stops.
- B. The zone merge pauses until the upgrade completes
- C. The upgrade stops
- D. The zone merge executes and then the upgrade completes.

Answer: C

Explanation:

https://www.cisco.com/c/en/us/td/docs/switches/datacenter/nexus5500/sw/upgrade/602_N2_2/n5500_upgrade_d

The specific requirements for a nondisruptive upgrade (ISSU) are as follows:

- Topology requirements—A Cisco Nexus device on which an ISSU is being initiated should not be in one of the unsupported topologies listed in the previous figure. No interface should be in a spanning-tree designated forwarding state. Also, do not configure Bridge Assurance on any interface of the Cisco Nexus device. vPC peer-link is an exception to these requirements.
- Layer 2 requirement—The ISSU process aborts if the system has any Link Aggregation Control Protocol (LACP) fast timers configured.
- FC/FCoE requirements—Check that the topology is stable for an ISSU to work correctly. You must check the following:
 - Domain Manager—As part of the installation process, domain manager checks if the fabric is in a stable state. If the fabric is not stable, the installation aborts.
 - CFS—As part of the installation process, Cisco Fabric Services (CFS) checks if any application (ntp.fsm, rcsn, fctime) is locked. If any application is holding a CFS lock, the installation aborts.
 - Zone Server—The installation process aborts if a zone merge or zone change request is in progress.
 - FSPF—As part of the upgrade process, Fabric Shortest Path First (FSPF) verifies if the configured interface dead interval is more than 80 seconds; otherwise, the installation aborts.

NEW QUESTION 303

Refer to the exhibit.

```
<?xml version="1.0" encoding="UTF-8"?><imdata totalCount="1"><error  
code="403" text="Token was invalid (Error: Token timeout)"/></imdata>
```

An engineer configures a new application profile using REST API and receives this error message. Which method can be used before application profile can be configured?

- A. POST to aaaLogin
- B. POST to aaaRefresh
- C. POST to aaaLogout
- D. GET to aaaListDomains

Answer: A

Explanation:

https://www.cisco.com/c/en/us/td/docs/switches/datacenter/aci/apic/sw/2-x/rest_cfg/2_1_x/b_Cisco_APIC_REST_API_Configuration_Guide/b_Cisco_APIC_REST_API_Configuration_Guide_chapter_01.html

Authentication

REST API username- and password-based authentication uses a special subset of request Universal Resource Identifiers (URIs), including **aaaLogin**, **aaaLogout**, and **aaaRefresh** as the DN targets of a POST operation. Their payloads contain a simple XML or JSON payload containing the MO representation of an **aaaUser** object with the attribute **name** and **pwd** defining the username and password: for example, `<aaaUser name='admin' pwd='password'/>`. The response to the POST operation will contain an authentication token as both a Set-Cookie header and an attribute to the **aaaLogin** object in the response named **token**, for which the XPath is `/imdata/aaaLogin/@token` if the encoding is XML. Subsequent operations on the REST API can use this token value as a cookie named **APIC-cookie** to authenticate future requests.

Subscription

The REST API supports the subscription to one or more MOs during your active API session. When any MO is created, changed, or deleted because of a user- or system-initiated action, an event is generated. If the event changes the data on any of the active subscribed queries, the APIC will send out a notification to the API client that created the subscription.

NEW QUESTION 304

What are two capabilities of the Cisco Network Assurance Engine? (Choose two.)

- A. It verifies the speed of network packet flows by using telemetry.
- B. It predicts the network load on a data center.
- C. It validates that devices comply with network security policies.
- D. It ensures that network performance meets an SLA.
- E. It predicts the impact of changes to the network.

Answer: CE

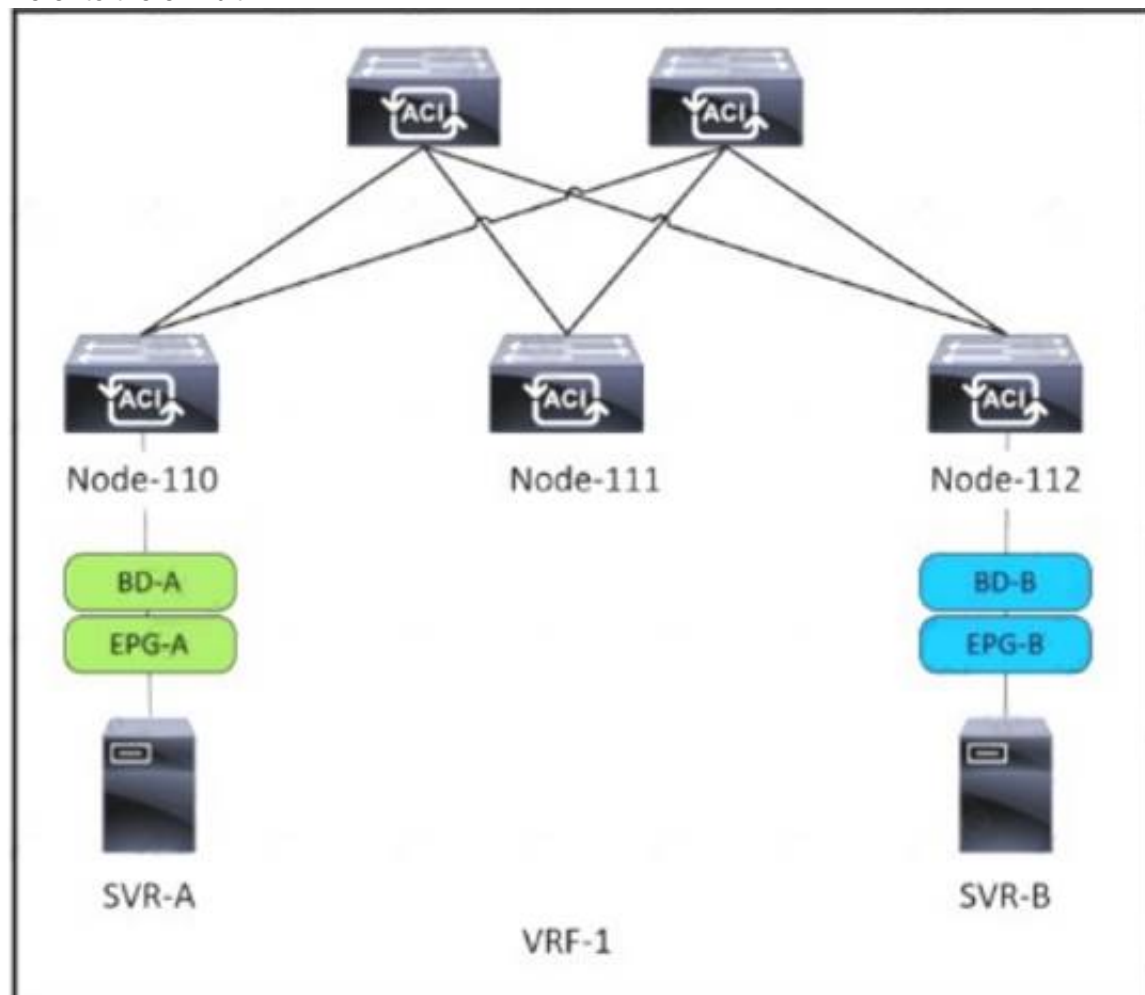
Explanation:

- Predict the impact of network changes
- Verify network-wide behavior
- Ensure network security policy and compliance

<https://www.cisco.com/c/en/us/products/collateral/data-center-analytics/network-assurance-engine/at-a-glance-c>

NEW QUESTION 307

Refer to the exhibit.



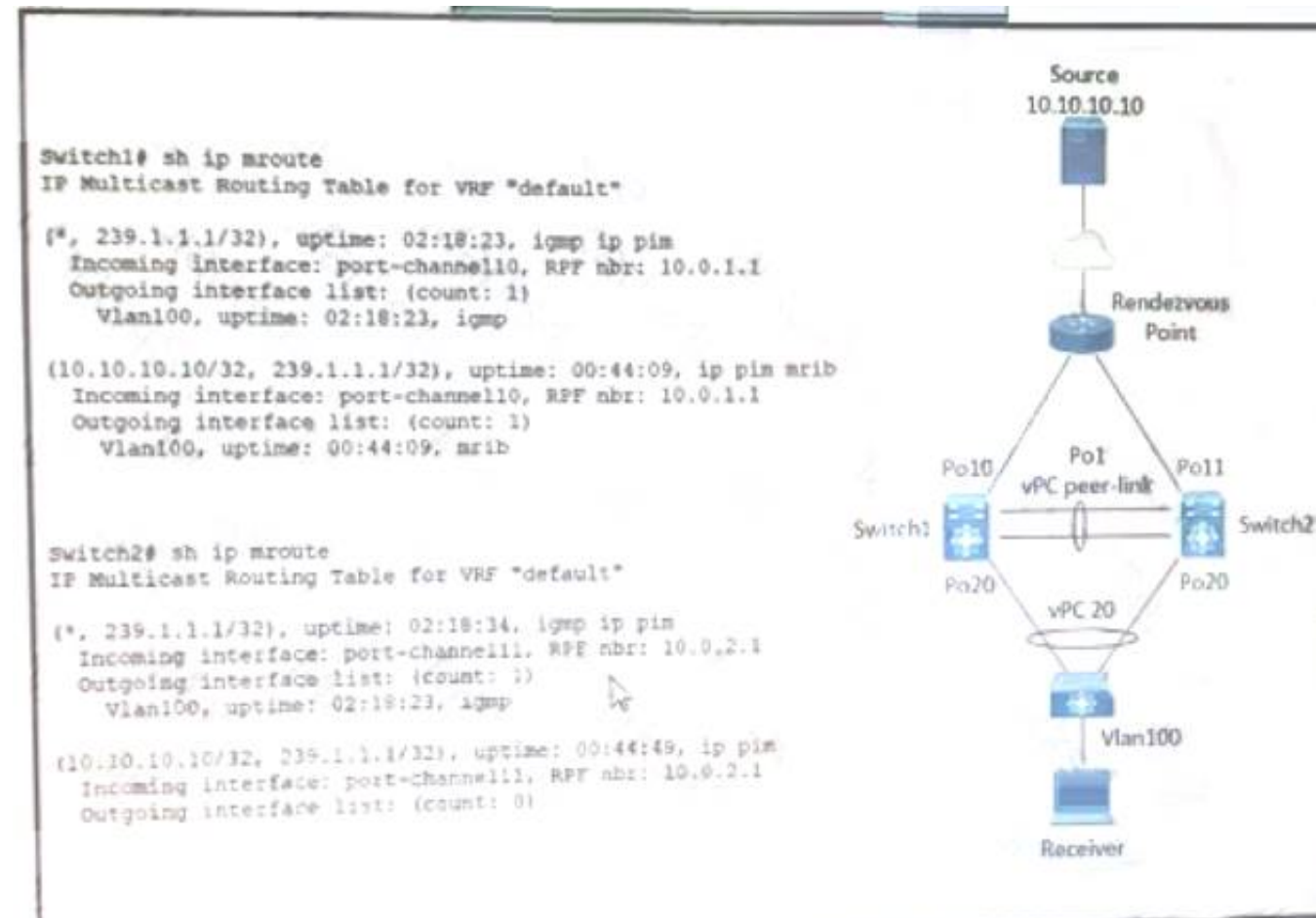
SVR-A in EPG-A/BD-A fails to reach SVR-B in EPG-B/BD-B. Which two conditions should be verified to analyze the traffic between the two EPGs? (Choose two.)

- A. A contract exists between EPG-A and EPG-B and allows the traffic.
- B. Limit Endpoint Learning is disabled on the bridge domain for EPG-B.
- C. SVR-B is learned as an endpoint in EPG-B from Node-112.
- D. EPG-A and EPG-B are excluded from the preferred group.
- E. The bridge domain for EPG-B floods ARP packets.

Answer: AC

NEW QUESTION 312

Refer to the exhibit.



A host with source address 10.10.10.10. sends traffic to multicast group 239.1.1.1. how do the vPC switches forward the multicast traffic?

- A. If multicast traffic is received on Po11 Switch2, the traffic is forwarded out only one Po20.
- B. If multicast traffic is received on Po10 Switch1, the traffic is forwarded out on Po1 and Po20.
- C. If multicast traffic is received on Po11 and Switch2, the traffic is dropped.
- D. If multicast traffic is received on Switch over the vPC peer-link, the traffic is dropped.

Answer: C

Explanation:

<https://www.cisco.com/c/en/us/support/docs/ip/multicast/214140-multicast-forwarding-in-vpc-based-on-loc.htm>

NEW QUESTION 313

An engineer must configure multiple EPGs on a single access port in a large Cisco ACI fabric without using VMM integration. The relevant access policies and tenant policies have been created. A single AAEP is used to configure the access port in the fabric. Which two additional steps must be taken to complete the configuration? (Choose two.)

- A. A contract must be defined between the EPGs
- B. The EPGs must be linked to the correct physical domain
- C. The EPGs must link directly to the corresponding AAEP
- D. The corresponding bridge domains must be configured in legacy mode
- E. The EPGs must be configured as static ports

Answer: BE

Explanation:

Attach EPG to Physical Domain (to AAEP through it) and add static ports to EPG

Contract is needed to allow communication between two EPGs, or EPG and L3out or between two L3out

NEW QUESTION 315

A network engineer must configure a Cisco MDS switch to use the local user database for console access if all AAA servers are unreachable. Which configuration should be applied to complete this task?

- A. aaa authentication login default fallback error local
- B. aaa authentication login console fallback error local
- C. aaa authentication login default local
- D. aaa authentication login console local

Answer: B

NEW QUESTION 318

What is a characteristic of the install all command on the cisco Nexus series switch?

- A. Upgrades only certain modules
- B. Automatically checks the image integrity
- C. Impact data plan traffic
- D. Continues the upgrade process if any step in the sequence fails

Answer: B

Explanation:

https://www.cisco.com/c/en/us/td/docs/switches/datacenter/nexus9000/sw/7-x/upgrade/guide/b_Cisco_Nexus_9000_Series_NX-OS_Software_Upgrade_and_Downgrade_Guide_Release_7x/b_Cisco_Nexus_9000_Series_NXOS_Software_Upgrade_and_Downgrade_Guide_Release_7x_chapter_010.html

install all command automatically checks the image integrity, which includes the NXOS software image. The command performs a platform validity check to verify that a wrong image is not used. https://www.cisco.com/c/en/us/td/docs/switches/datacenter/nexus3000/sw/upgrade/7_x/b_Cisco_Nexus_3000_S

NEW QUESTION 323

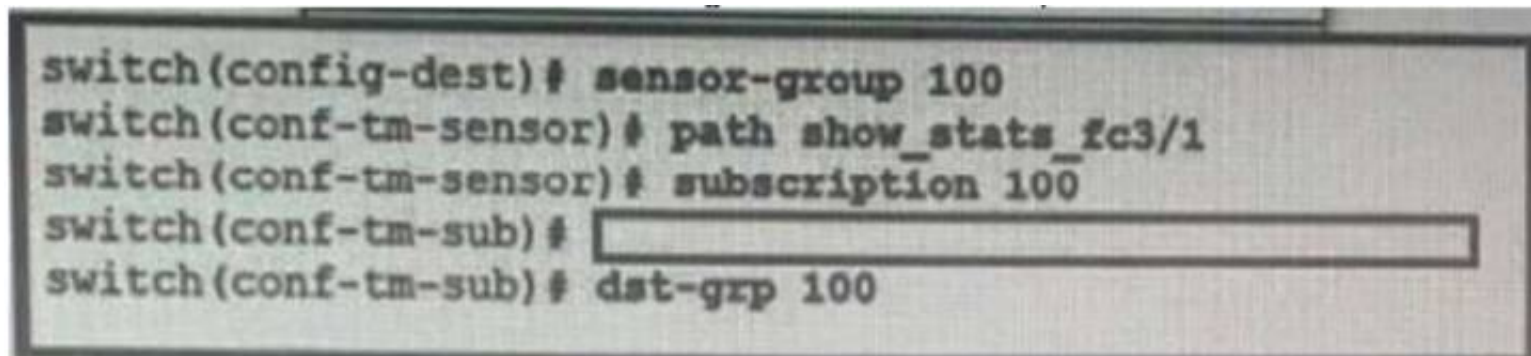
Which MAC address is an HSRP version 2?

- A. 0100.5E7F.FFFF
- B. 3799.9943.3000
- C. 0000.0C9F.F0C8
- D. 0000.0C07.AC1H

Answer: C

NEW QUESTION 328

Refer to the exhibit.



An engineer needs to implement streaming telemetry on a cisco MDS 9000 series switch. The requirement is for the show command data to be collected every 30 seconds and sent to receivers. Which command must be added to the configuration meet this requirement?

- A. Sensor-grp 200 sample-period 30000
- B. Snsr-grp 200 sample-interval 30
- C. Sensor-grp 200 sample-period 30
- D. Snsr-grp 200 sample-interval 30000

Answer: D

Explanation:

snsr-grp <id> sample-interval <interval> Currently, sensor group ID supports only numeric ID values. Specify the streaming sample interval value; the value must be in milliseconds. The minimum streaming sample interval that is supported is 30000 milliseconds.

https://www.cisco.com/c/en/us/td/docs/switches/datacenter/mds9000/sw/8_x/config/san_analytics/cisco-mds9000

NEW QUESTION 332

Which data structure results from running this Python code?

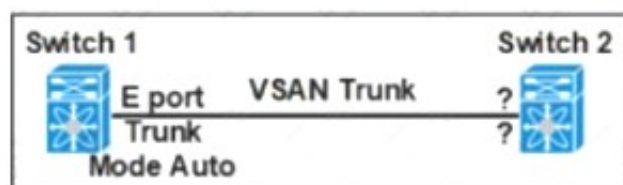
```
>>> import json
>>> f = open('fname.json', 'r')
>>> var1 = json.load(f)
>>> var1
{'u'bd': u'bd1', u'ap': {'u'eggs': [{'u'name': u'app'}, {'u'name': u'web'}, {'u'name': u'db'}], u'name': u'OnlineStore', u'name': u'39106329', u'pvn': u'pvn1'}}
```

- A. Set
- B. Tuple
- C. Dictionary
- D. List

Answer: A

NEW QUESTION 337

Refer to the exhibit.



Which feature set must be used to configure on switch 2 to establish a VSAN trunk between switch 1 and switch 2?

- ☒ • E Port
- ☐ • Trunk Mode On
- ☐ • F Port
- ☐ • Trunk Mode Passive
- ☐ • N Port
- ☐ • Trunk Mode Active
- ☒ • NP Port
- ☐ • Trunk Mode Auto

- A. Option A
- B. Option B
- C. Option C
- D. Option D

Answer: A

NEW QUESTION 339

A network engineer must perform a backup and restore of the Cisco Nexus 5000 Series Switch configuration. The backup must be made to an external backup server. The only protocol permitted between the Cisco Nexus Series switch and the backup server is UDP. The backup must be used when the current working configuration of the switch gets corrupted. Which set of steps must be taken to meet these requirements?

- A. 1. Perform a running-config backup to an SFTP serve
- B. 2. Copy backup-config from the SFTP server to the running-config file.
- C. 1. Perform a startup-config backup to a TFTP serve
- D. 2. Copy backup-config from the backup server to the running-config file.
- E. 1. Perform a running-config backup to an SCP serve
- F. 2. Copy running-config in the boot flash to the running-config file.
- G. 1. Perform a startup-config backup to an FTP serve
- H. 2. Copy startup-config in the boot flash to the running-config file.

Answer: B

Explanation:

TFTP runs on UDP 69 = Is correct

NEW QUESTION 344

An engineer needs to make an XML backup of Cisco UCS Manager The backup should be transferred using an authenticated and encrypted tunnel and it should contain all system and service profiles configuration Which command must be implemented to meet these requirements?

- ☐ create file scp://user@host35/backups/all-config9.bak all-configuration
- ☐ copy startup-config scp://user@host35/backups/all-config9.bak all-configuration
- ☒ create backup scp://user@host35/backups/all-config9.bak all-configuration
- ☐ copy running-config scp://user@host35/backups/all-config9.bak all-configuration

- A. Option A
- B. Option B
- C. Option C
- D. Option D

Answer: C

Explanation:

https://www.cisco.com/en/US/docs/unified_computing/ucs/sw/cli/config/guide/1.4.1/CLI_Config_Guide_1_4_1
 The following example creates a disabled all-configuration backup operation for hostname host35 and commits the transaction:

```
UCS-A# scope system
UCS-A /system* # create backup scp://user@host35/backups/all-config9.bak all-configuration disabled
Password:
UCS-A /system* # commit-buffer
UCS-A /system #
```

NEW QUESTION 346

Which two settings must be configured before enabling a Cisco UCS Manager domain for Cisco Intersight connectivity? (Choose two.)

- A. syslog redirection

- B. DNS servers
- C. SMTP servers
- D. NTP servers
- E. SMTP reply-to-address

Answer: BD

Explanation:

https://www.cisco.com/c/en/us/td/docs/unified_computing/ucs/ucs-manager/GUI-User-Guides/Admin-Management/4-1/b_Cisco_UCS_Admin_Mgmt_Guide_4-1/m_gui_cisco_intergight_management.html

NEW QUESTION 347

Refer to the exhibit.

```
switch# show install all impact epld n9000-epld.9.2.1.img
Compatibility check:
Module          Type          Upgradable      Impact          Reason
-----
1              SUP              YES             disruptive      Module Upgradable

Retrieving EPLD versions... Please wait.

Images will be upgraded according to following table:
Module  Type  EPLD          Running-Version  New-Version  Upg-Required
-----
1      SUP  MI FPGA       0x23             0x23         No
1      SUP  IO FPGA       0x06             0x06         No
1      SUP  MI FPGA2      0x23             0x23         No
```

A network engineer plans to upgrade the current software images of a Cisco Nexus switch. What is the impact of starting the EPLD upgrade?

- A. The switch reboots one time for the new EPLD versions to take effect.
- B. The switch reboots multiple times for the new EPLD versions to take effect.
- C. The switch skips the EPLD upgrade for each EPLD device of the switch.
- D. The switch skips the EPLD upgrade for MIFPGA and proceeds with the other EPLD devices.

Answer: C

Explanation:

https://www.cisco.com/c/en/us/td/docs/switches/datacenter/nexus9000/sw/92x/epld-rn/nxos_n9K_epldRN_924.

NEW QUESTION 349

Host 1 is in VLAN 100 located is DataCenter 1 and Host2 is in VLAN200 located in DataCenter2. Which OTV VLAN mapping configuration allows Layer 2 connectivity between these two hosts?

- A. DC1:
interface Overlay1
otv extend-vlan 100
otv vlan mapping 100 to 200

 DC2:
interface Overlay1
otv extend-vlan 100
otv vlan mapping 100 to 200
- B. DC1:
interface Overlay1
otv extend-vlan 100
otv vlan mapping 100 to 200

 DC2:
interface Overlay1
otv extend-vlan 200

- C. DC1:
interface Overlay1
otv extend-vlan 100
- DC2:
interface Overlay2
otv extend-vlan 200
- D. DC1:
interface Overlay1
otv extend-vlan 100
- DC2:
interface Overlay1
otv extend-vlan 200

- A. Option A
 B. Option B
 C. Option C
 D. Option D

Answer: B

Explanation:

<https://www.cisco.com/c/en/us/support/docs/switches/nexus-7000-series-switches/200998-Nexus-7000-OTV-V>
<https://www.cisco.com/c/en/us/support/docs/switches/nexus-7000-series-switches/200998-Nexus-7000-OTV-V>

NEW QUESTION 351

A network administrator must automate the process of pinging all the IP addresses from the 10.0.0.0/8 subnet. The subnet is already present in the ARP table of the Cisco Nexus switch. Drag and drop the bash commands to generate the desired output. Not all commands are used.

```
bash-4.3$ | grep "^10\." | | |
--- 10.1.0.2 ping statistics ---
5 packets transmitted, 5 packets received, 0.00% packet loss
--- 10.1.0.77 ping statistics ---
5 packets transmitted, 0 packets received, 100.00% packet loss
```

awk '{print "ping " \$1}'

egrep "statistics|loss"

grep -v "statistics|loss"

sed -e 's/ping /10./g'

show ip arp

vsh

vsh -c "show ip arp"

- A. Mastered
 B. Not Mastered

Answer: A

Explanation:

vsh -c "show ip arp", awk'{print "ping" \$1}', vsh, egrep "statistics|loss"

NEW QUESTION 352

A network architect wants to propose a scalable network monitoring solution in which data is repeatedly acquired from network devices. The solution must use a push model and provide close to realtime access to operational data. Which technology must be used to meet these requirements?

- A. streaming telemetry
 B. logging
 C. SNMPv3
 D. CLI-based scripting

Answer: A

Explanation:

<https://blogs.cisco.com/developer/its-time-to-move-away-from-snmp-and-cli-and-use-model-driven-telemetry>

Why Model-Driven Telemetry?

Model-Driven Telemetry is a new approach for network monitoring in which data is streamed from network devices continuously using a push model and provides near real-time access to operational statistics. You can precisely define what data you want to subscribe to using standard YANG models (YANG is a data modeling language used to model configuration and state data manipulated by the NETCONF protocol) with no CLI required. It allows network devices to continuously stream real time configuration and operating state information to subscribers. Structured data is published at a defined cadence, or on-change, based upon the subscription criteria and data type.

NEW QUESTION 355

A host EPG Client wants to talk to a webserver in EPG Web. A contract with default settings is defined between EPG Client and EPG Web, which allows TCP communication initiated by the client toward the webserver with TCP destination port 80. Which statement is true?

- A. If EPG Web is made a preferred group member, a contract between EPG Client and EPG Web is no longer required for the host in EPG Client to reach the webserver in EPG Web.
- B. If vzAny is configured to consume and provide a "deny all" contract, traffic between EPG Client and EPG Web is no longer allowed.
- C. The host in EPG Client is allowed to connect to TCP destination port 80 on the webserver in EPG Web. The webserver will not be allowed to initiate a separate TCP connection to a host port with TCP source port 80.
- D. The host in EPG Client is allowed to connect to TCP destination port 80 on the webserver in EPG Web. The webserver is allowed to initiate a separate TCP connection to a host port with TCP source port 80.

Answer: D

Explanation:

Apply Both Direction and Reverse Filter Port in the subject for the filter. These two options are by default enabled... This means that if the provider EPG initiates traffic toward the consumer EPG, the Cisco ACI fabric allows it for any destination ports if the source port is 80.

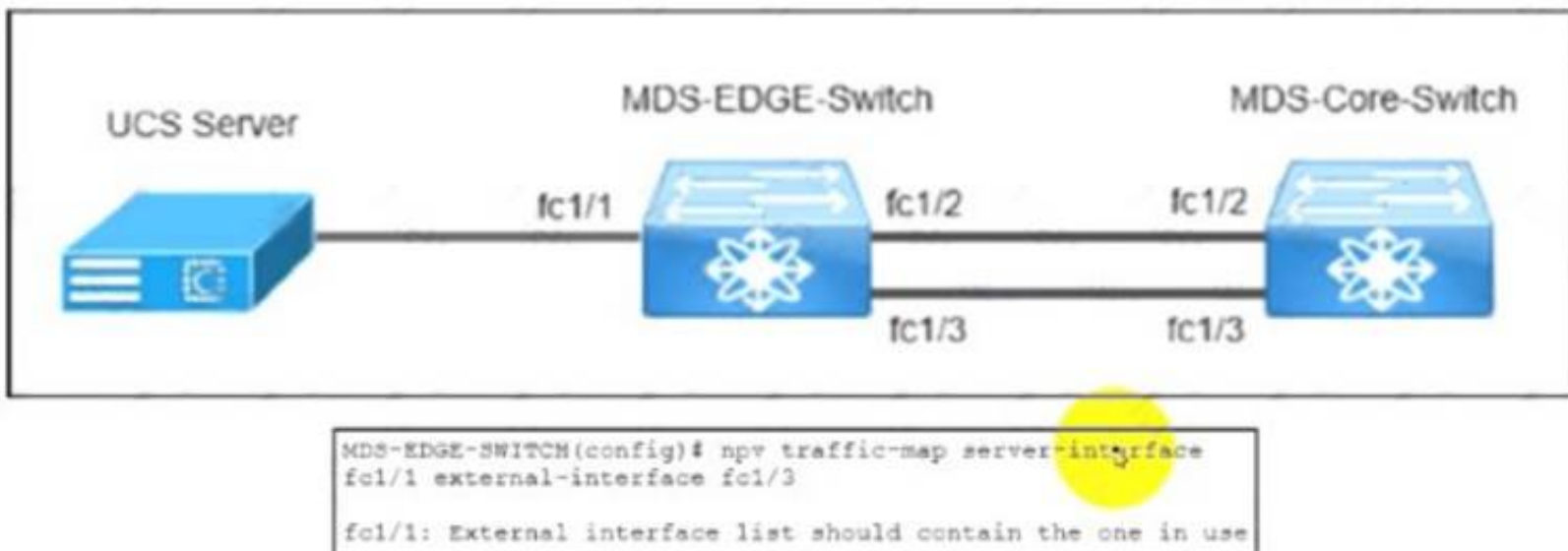
https://www.cisco.com/c/en/us/td/docs/switches/datacenter/aci/apic/sw/1-x/Operating_ACI/guide/

[b_Cisco_Operating_ACI/b_Cisco_Operating_ACI_chapter_01000.html](https://www.cisco.com/c/en/us/td/docs/switches/datacenter/aci/apic/sw/1-x/Operating_ACI/guide/b_Cisco_Operating_ACI/b_Cisco_Operating_ACI_chapter_01000.html) Reverse filter and apply in both directions is default.

If a filter allows traffic from any consumer port to a provider port (e.g. 8888), if reverse port filtering is enabled and the contract is applied both directions (say for TCP traffic), either the consumer or the provider can initiate communication. The provider could open up a TCP socket to the consumer using port 8888, whether the provider or consumer sent traffic first. https://www.cisco.com/c/en/us/td/docs/switches/datacenter/aci/apic/sw/1-x/Operating_ACI/guide/b_Cisco_Operating_ACI/b_Cisco_Operating_ACI_chapter_01000.html

NEW QUESTION 356

Refer to the exhibit.



The MDS-EDGE-Switch and MDS-Core-Switch are configured with NPV and NPIV features. The FLOGI from Cisco UCS is received by the MDS-Core-Switch on interface fc1/2. An engineer tried to move all traffic between the MDS-EDGE-Switch and MOS-Core-Switch from interface fc 1/2 to fc1/3, but the attempt failed. Which set of actions completes the configuration?

- ☐ Disable the NPV feature in the MDS-EDGE-Switch.
Re-enable the NPV feature.
Disable interface fc1/1.
- ☐ Disable the NPIV feature in the MDS-EDGE-Switch.
Re-enable the NPIV feature.
Disable interface fc1/3.
- ☐ Shut down fc1/1 in the MDS-EDGE-Switch.
Re-apply the command.
Enable interface fc1/1.
- ☒ Shutdown fc1/3 in the MDS-EDGE-Switch.
Re-apply the command.
Enable interface fc1/3.

- A. Option A
- B. Option B
- C. Option C
- D. Option D

Answer: C

NEW QUESTION 358

Which two actions should be taken before an upgrade is started on a Cisco MDS switch? (Choose two.)

- A. check the impact of the upgrade using the show install all impact command
- B. disable Cisco Fabric Services
- C. back up the configuration
- D. free up space on the USB3 device by deleting old Cisco NX-OS image files
- E. make the primary supervisor the active supervisor

Answer: AC

Explanation:

https://www.cisco.com/c/en/us/td/docs/switches/datacenter/mds9000/sw/5_2/upgrade/guides/nx-os/upgrade.html

NEW QUESTION 361

Which server policy is used to install new Cisco IMC software on a server?

- A. host firmware policy
- B. hypervisor firmware policy
- C. BIOS software policy
- D. Cisco IMC software policy

Answer: A

Explanation:

https://www.cisco.com/c/en/us/td/docs/unified_computing/ucs/ucs-manager/CLI-User-Guides/Firmware-Mgmt/4-0/b_UCSM_CLI_Firmware_Management_Guide_4-0/b_UCSM_CLI_Firmware_Management_Guide_4-0_chapter_01.html#

You can use host firmware packages by defining a host firmware policy as an attribute of a service profile template, which is an updating template. Any change made to the service profile template is automatically made to its instantiated service profiles. Subsequently, the servers associated with the service profiles are also upgraded in parallel with the firmware version.

Graphical user interface, text, application Description automatically generated

The Cisco UCS domains are categorized into domain groups in Cisco UCS Central for management purposes. You can manage firmware for each domain group separately at the domain group level or for all domain groups from the domain group root. Cisco UCS Central provides you the option to manage the following Cisco UCS domain firmware packages:

- **Capability Catalog**— One capability catalog per domain group. All Cisco UCS domains registered to a particular domain group will use the capability catalog defined in the domain group.
- **Infrastructure Firmware**— One infrastructure firmware policy per domain group. All Cisco UCS domains registered to a particular domain group will use the same Infrastructure firmware version defined in the domain group.
- **Host Firmware**— You can have more than one **host firmware policy** for the different host firmware components in a domain group. The Cisco UCS domains registered in the domain group will be able to choose any defined **host firmware policy** in the group. Cisco UCS Central provides you the option to upgrade the host firmware globally to all Cisco UCS domains in a domain group at the same time.



Note

For more information on managing firmware in Cisco UCS Central, see the Firmware Management chapters in the *Cisco UCS Central Administration Guide* and *Cisco UCS Central CLI Reference Manual*.

NEW QUESTION 363

An engineer must perform an initial configuration of VXLAN Tunnel End-Point functionality on the Cisco Nexus 9000 Series platform. All the necessary features are already enabled on the switch. Which configuration set must be used to accomplish this goal?

- ☐ NX9K(config)# interface loopback0
 NX9K(config-if)# ip address 10.10.10.11/32
- ☐ NX9K(config)# interface overlay0
 NX9K(config-if-overlay)# source-interface loopback0
- ☐ NX9K(config)# interface VLAN10
 NX9K(config-if-nve)# source-interface loopback0
- ☐ NX9K(config)# interface loopback0
 NX9K(config-if)# ip address 10.10.10.11/32
- ☐ NX9K(config)# interface tunnel1
 NX9K(config-if)# tunnel source loopback0
- ☐ NX9K(config)# interface ethernet1/1
 NX9K(config-if)# ip unnumbered loopback0
- ☐ NX9K(config)# interface loopback0
 NX9K(config-if)# ip address 10.10.10.11/32
- ☐ NX9K(config)# interface nve1
 NX9K(config-if-nve)# source-interface loopback0
- ☐ NX9K(config)# interface ethernet1/1
 NX9K(config-if)# ip unnumbered loopback0
- ☐ NX9K(config)# interface loopback0
 NX9K(config-if)# ip address 10.10.10.11/32
- ☐ NX9K(config)# interface VLAN10
 NX9K(config-if)# ip unnumbered loopback0
- ☐ NX9K(config)# interface nve1
 NX9K(config-if-nve)# source-interface loopback0

- A. Option A
- B. Option B
- C. Option C
- D. Option D

Answer: D

NEW QUESTION 365

A network architect must redesign a data center on OSPFv2. The network must perform fast reconvergence between directly connected switches. Which two actions must be taken to meet the requirement? (Choose two)

- A. Configure all links on AREA 0.
- B. Implement a virtual link between the switches.
- C. Use OSPF point-to-point links only.
- D. Set low OSPF hello and DEAD timers.
- E. Enable BFD for failure detection.

Answer: CD

NEW QUESTION 369

A Cisco Nexus 7000 Series switch runs VXLAN, and interface Ethernet 7/30 is configured as a trunk port. Which command set configures the switch to act as a gateway for VLAN 50?

```
interface Ethernet7/30 no switchport
no shutdown
service instance 1 vni no shutdown
```

- A. encapsulation profile VSI_50_TO_500 default
- B. encapsulation profile vni VSI_50_TO_500 dot1q 500 vni 50bridge-domain 500member vni 50 interface Vlan500ip address 10.50.50.51/24
- C. encapsulation profile vni VSI_50_TO_500 dot1q 500 vni 50bridge-domain 500member vni 50 interface Bdi500jp address 10.50.50.51/24
- D. encapsulation profile vni VSI_50_TO_500 dot1q 50 vni 500bridge-domain 50member vni 500 interface Bdi50ip address 10.50.50.51/24
- E. encapsulation profile vni VSI_50_TO_500 dot1q 50 vni 500bridge-domain 50member vni 500 interface Vlan50ip address 10.50.50.51/24

Answer: C

NEW QUESTION 371

Refer to the exhibit.


```
vlan 10
 fcoe vsan 10

interface ethernet 1/3
 spanning-tree port type edge trunk
 switchport mode trunk
 switchport trunk allowed vlan 1, 10
```

An engineer must configure FCoE on a Cisco Nexus switch. Which two command sets complete this configuration? (Choose two.)

- ☒ interface vfc 10
 bind interface fcoe-vfc 1/3
 no shut
- ☐ vsan database
 vsan 10 interface ethernet 1/3
- ☒ interface fcoe 10
 bind interface ethernet 1/3
 no shut
- ☐ interface vfc 10
 bind interface ethernet 1/3
 no shut
- ☐ vsan database
 vsan 10 interface vfc 10

- A. Option A
- B. Option B
- C. Option C
- D. Option D
- E. Option E

Answer: DE

Explanation:

```
switch# configure terminal
```

```
switch(config)# vsan database
```

```
switch(config-vsan)# vsan 2 interface vfc 4
```

This example shows how to bind a virtual Fibre Channel interface to an Ethernet interface:

```
switch# configure terminal
```

```
switch(config)# interface vfc 4
```

```
switch(config-if)# bind interface ethernet 1/4
```

https://www.cisco.com/c/en/us/td/docs/switches/datacenter/nexus5000/sw/fcoe/421_n1_1/b_Cisco_n5k_fcoe_config_gd_re_421_n1_1/Cisco_n5k_fcoe_config_gd_re_421_n1_1_chapter4.html

NEW QUESTION 373

A customer undergoes an IT security review assessment. The auditor must have read-only access to the Cisco Nexus 9000 Series Switch to perform the configuration review. The customer implements this security role for the auditor:

role name audit

rule 1 permit command * rule 2 - Output omitted username auditor password C4SAFF0B96EB0045\$c0 role audit Which configuration snippet must complete the configuration?

- A. deny command write*
- B. permit command enable
- C. permit command show *
- D. deny command configure terminal

Answer: D

NEW QUESTION 378

Refer to the exhibit.

```
event manager applet local-backup
event cli match "copy running-config startup-config"
action 1 cli copy [ ] bootflash:/
current config.txt
action 2 syslog msg Configuration saved and copied to
bootflash
action 3 event-default
```

A network engineer must create an EEM script that saves a copy of the running configuration to bootflash and writes a message to syslog when a user saves the configuration to a Cisco Nexus 9000 Series Switch. Which command completes the configuration set?

- A. running-config
- B. policy-default
- C. syslog-config
- D. event-default

Answer: A

NEW QUESTION 383

An engineer must configuration a backup and restore of Cisco UCS Manager during the weekend maintenance windows. The configuration must be restored to its original state on Monday morning. The end users can make changes only to the Service Profile configuration. Which set of actions meets these requirements?

- A. Schedule a system backup to run at the start of every weekend and manually import the backup on Monday morning.
- B. Schedule a system backup to run at the start of every weekend and schedule the import of the backup to run on Monday morning
- C. Schedule a logical backup to run at the start of every weekend and manually import the backup on Monday morning.
- D. Schedule a logical backup to run at the start of every weekend and schedule the import of the backup to run on Monday morning.

Answer: B

NEW QUESTION 386

A POAP-enabled Cisco Nexus switch will not enter POAP mode. Which two conditions should be verified? (Choose two.)

- A. Bootflash must contain a special directory named POAP with poap.py file.
- B. The switch is in bootup process.
- C. No startup configuration is available.
- D. The license file is missing on the switch.
- E. No Cisco NX-OS image is present on the bootflash.

Answer: BC

Explanation:

POAP is an automatic provisioning and zero-touch deployment feature that assists device owners in the initial deployment and configuration of Nexus switches. The feature works by checking for a local configuration script. If the script has been deleted, the switch has been reset to factory settings, or this is the first boot-up, the POAP daemon will connect to a preset list of servers to download an initial configuration file.

To perform this operation, the switch must first obtain an IP address from a local DHCP server. POAP configuration settings can also be passed through the DHCP response.

Which conditions should be verified, so they need to be TRUE. Like no startup (A) and bootup (B). C means that it needs to miss a license file and E means it needs to miss an NX-OS image.

NEW QUESTION 391

An engineer is implementing NetFlow on a Cisco Nexus 7000 Series Switch. Drag and drop the NetFlow commands from the left into the correct order they must be entered on the right.

N7K-1(config)# interface <interface> N7K-1(config-if)# ip flow monitor NetflowMonitor input	Step 1
N7K-1(config)# feature netflow	Step 2
N7K-1(config)# flow exporter NetflowMonitor N7K-1(config)# flow record NetflowMonitor	Step 3
N7K-1(config)# flow monitor NetflowMonitor	Step 4

- A. Mastered
- B. Not Mastered

Answer: A

Explanation:

- 1- feature netflow
- 2- flow exporter
- 3- flow monitor
- 4- interface<interface>

NEW QUESTION 395

An engineer implements an ACI fabric and must implement microsegmentation of endpoints within the same IP subnet using a network-based attribute. The attribute mapping must allow IP subnet independence. Which attribute must be selected?

- A. MAC address
- B. Custom
- C. Tag
- D. IP

Answer: D

Explanation:

If you want to use a network-based attribute and classify IP addresses in the same subnet, you must use the MAC-based network attribute. IP-based microsegmented EPGs do not support classification for IP addresses in the same subnet.

https://www.cisco.com/c/en/us/td/docs/switches/datacenter/aci/apic/sw/3-x/virtualization/b_ACI_Virtualization_

NEW QUESTION 398

An engineer is seeking the most optimal on demand CPU performance while configuring the BIOS settings of a UCS C-series rack mount server. What setting will accomplish this goal?

- A. C0/C1 state
- B. C6 Retention
- C. C2 state
- D. C6 non-Retention

Answer: B

NEW QUESTION 402

A network engineer is asked to describe the cloud infrastructure models from the perspective of their operation and access to resources. Drag and drop the descriptions from the left onto the appropriate.

Provisioned for open use.	Private cloud
At least two or more separate cloud infrastructures are connected together to facilitate hosted data and application portability.	Community cloud
Owned, managed, and operated by one or more organizations or teams.	Public cloud
Owned, managed, and operated by a single organization.	Hybrid cloud

- A. Mastered
- B. Not Mastered

Answer: A

Explanation:

Private Cloud: owned, managed, and operated by a single organization.

Community Cloud: Owned, managed, and operated by one or more organizations or teams. Public Cloud: Provisioned for open use.

Hybrid Cloud: At least two or more separate cloud infrastructures are connected together to facilitate hosted data and application portability.

NEW QUESTION 405

A customer data center experiences bandwidth contention that affects the servers connected to the NPV enabled switch. The NPV switch is connected to the NPIV switch using two 10 Gb uplinks, but the traffic originating from the connected hosts to the core switch exceeds the available bandwidth. The engineers decided to add a third uplink to the NPV server to increase the available bandwidth. Which set of commands must be used to provision the new uplink?


```

switch2(config)# npv auto-load-balance disruptive

! uplink to NPV Core
switch2(config-if)# switchport mode np

switch2(config)# port-channel load-balance ethernet source-dest-port

! uplink to NPV Core
switch2(config-if)# switchport mode np

switch2(config)# npv traffic-map server-interface

! uplink to NPV Core
switch2(config-if)# switchport mode npiv

switch2(config)# npv auto-load-balance

! uplink to NPV Core
switch2(config-if)# switchport mode npiv

```

- A. Option A
- B. Option B
- C. Option C
- D. Option D

Answer: B

NEW QUESTION 406

Refer to the exhibit.

```

1.130599 192.168.254.1 -> 192.168.254.13 TCP 60 29652 > ssh [ACK] Seq=1 Ack=53
Win=32449 Len=0
1.136261 00:8e:73:a2:41:0e -> Spanning-tree-(for-bridges)_00 STP 60 Conf. Root =
8192/10/ec:e1:a9:df:6c:80 Cost = 22 Port = 0x800e
1.373417 192.168.254.13 -> 192.168.254.1 SSH 106 Encrypted response packet len=52
1.570377 192.168.254.1 -> 192.168.254.13 TCP 60 29652 > ssh [ACK] Seq=1 Ack=105
Win=32786 Len=0
1.815558 192.168.254.13 -> 192.168.254.1 SSH 106 Encrypted response packet len=52
2.021840 192.168.254.1 -> 192.168.254.13 TCP 60 29652 > ssh [ACK] Seq=1 Ack=157
Win=32773 Len=0
2.525173 192.168.254.13 -> 192.168.254.1 SSH 106 Encrypted response packet len=52
2.731382 192.168.254.1 -> 192.168.254.13 TCP 60 29652 > ssh [ACK] Seq=1 Ack=209
Win=32760 Len=0
2.947365 192.168.254.13 -> 192.168.254.1 NTP 90 NTP Version 2, client
2.947623 192.168.254.1 -> 192.168.254.13 NTP 90 NTP Version 2, server
3.138157 00:8e:73:a2:41:0e -> Spanning-tree-(for-bridges)_00 STP 60 Conf. Root =
8192/10/ec:e1:a9:df:6c:80 Cost = 22 Port = 0x800e
3.139400 192.168.254.13 -> 192.168.254.1 SSH 106 Encrypted response packet len=52
3.270728 192.168.254.4 -> 239.255.70.83 UDP 166 Source port: cfa Destination port:
cfa
3.341123 192.168.254.1 -> 192.168.254.13 TCP 60 29652 > ssh [ACK] Seq=1 Ack=261
Win=32747 Len=0
3.835409 192.168.254.13 -> 192.168.254.1 SSH 106 Encrypted response packet len=52
4.041411 192.168.254.1 -> 192.168.254.13 TCP 60 29652 > ssh [ACK] Seq=1 Ack=313
Win=32734 Len=0
4.535284 192.168.254.13 -> 192.168.254.1 SSH 106 Encrypted response packet len=52
4.741072 192.168.254.1 -> 192.168.254.13 TCP 60 29652 > ssh [ACK] Seq=1 Ack=365
Win=32721 Len=0
4.947308 192.168.254.13 -> 192.168.254.1 NTP 90 NTP Version 2, client
4.947519 192.168.254.1 -> 192.168.254.13 NTP 90 NTP Version 2, server
5.139627 00:8e:73:a2:41:0e -> Spanning-tree-(for-bridges)_00 STP 60 Conf. Root =
8192/10/ec:e1:a9:df:6c:80 Cost = 22 Port = 0x800e
5.140867 192.168.254.13 -> 192.168.254.1 SSH 106 Encrypted response packet len=52

```

Cisco Fabric Services is enabled in the network. Which type of IP address is used by the Cisco Fabric Services protocol?

- A. IPv4 unicast address
- B. IPv4 multicast address
- C. IPv4 gateway address
- D. IPv4 anycast address

Answer: B

NEW QUESTION 410

An engineer must configure a monitoring solution for a Cisco Nexus 9000 Series Switch based data center. The solution must provide real-time insight into the network health with subscription-based monitoring. The monitoring must be initiated from the client side, and the data must be sent via encryption. Which configuration steps complete the configuration?

- ☐ Set the telemetry feature on the Nexus switch.
Specify a certificate for telemetry transport.
Configure a sensor group and destination.
- ☒ Enable GRPC on the Nexus switch.
Generate a certificate.
Configure gNMI inputs in Telegraf and output to InfluxDB.
- ☐ Configure Grafana on the Nexus switch.
Specify the logging certificate.
Enable syslog level 7 export to Grafana.
- ☐ Activate SNMPv3 on the Nexus switch.
Set the globalEnforcePriv parameter.
Configure an SNMP agent to poll information.

- A. Option A
- B. Option B
- C. Option C
- D. Option D

Answer: A

NEW QUESTION 412

A customer asks an engineer to develop a framework that will be used to replace the process of the manual device configuration of Cisco NX-OS devices. The engineer plans to use the programmatic interface that meets these requirements:

- The development team is familiar with Windows-based scripting environment using PowerShell.
- The customer's security requirements mandate the use of HTTPS transport.

Which solution must be used to meet these requirements?

- A. NX-API
- B. VISORE
- C. Open Agent Container
- D. NETCONF-YANG

Answer: A

NEW QUESTION 414

A network engineer must create a script to quickly verify IP reachability for multiple hosts using ping from the Cisco NX-OS switches. The script should use the management VRF and exit the shell after execution Which script should be used to achieve this objective?

- ☐

```
tclsh
foreach address {
  192.168.254.1
  192.168.254.2
  192.168.254.3
  192.168.254.4
} {ping $address source 192.168.254.254
}
tclquit
```
- ☐

```
tclsh
foreach address {
  192.168.254.1
  192.168.254.2
  192.168.254.3
  192.168.254.4
} {ping $address source 192.168.254.254
}
```
- ☐

```
tclsh
foreach address {
  192.168.254.1
  192.168.254.2
  192.168.254.3
  192.168.254.4
} {ping $address vrf management source 192.168.254.254
}
```
- ☒

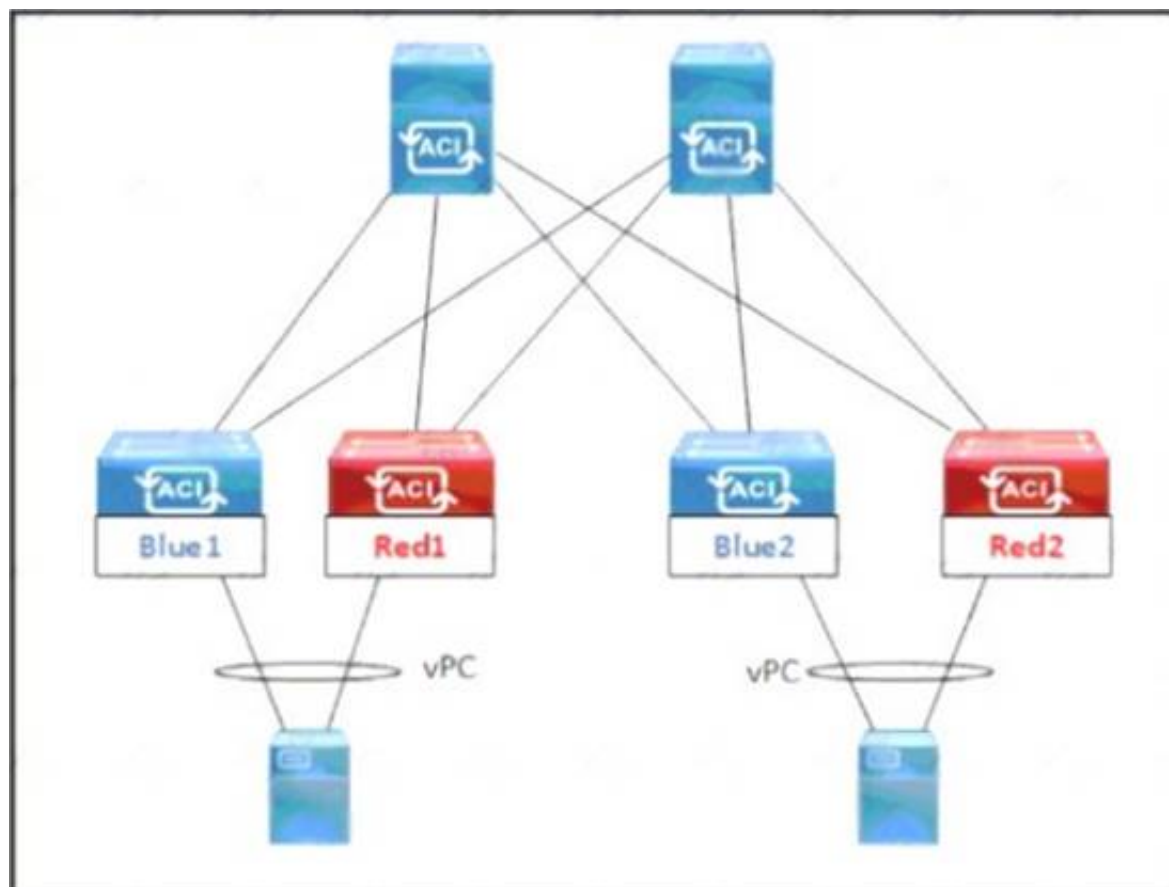
```
tclsh
foreach address {
  192.168.254.1
  192.168.254.2
  192.168.254.3
  192.168.254.4
} {cli ping $address vrf management source 192.168.254.254
}
tclquit
```

- A. Option A
- B. Option B
- C. Option C
- D. Option D

Answer: D

NEW QUESTION 416

Refer to the exhibit.



An engineer must schedule the firmware upgrade of the Red1 and Red2 leaf switches. The requirement is to keep the upgrade time to the minimum, avoid any service impact, and perform the parallel upgrade Which set of scheduler attributes must be used to meet these requirements?

- ☐ • Configure SchedulerPolicy1 for all four leaf switches Blue1, Blue2, Red1, and Red2.
• Configure SchedulerPolicy1 and SchedulerPolicy2 with a one-time window trigger that has maximum concurrent nodes 1.
- ☐ • Configure SchedulerPolicy1 for leaf switches Blue1 and Red1, and SchedulerPolicy2 for leaf switches Blue2 and Red2.
• Configure SchedulerPolicy1 and SchedulerPolicy2 with a one-time window trigger that has maximum concurrent nodes 2.
- ☐ • Configure SchedulerPolicy1 for all four leaf switches Blue1, Blue2, Red1, and Red2.
• Configure SchedulerPolicy1 and SchedulerPolicy2 with a one-time window trigger that has maximum concurrent nodes 2.
- ☐ • Configure SchedulerPolicy1 for leaf switches Blue1 and Red1, and SchedulerPolicy2 for leaf switches Blue2 and Red2.
• Configure SchedulerPolicy1 and SchedulerPolicy2 with a one-time window trigger that has maximum concurrent nodes 1.

- A. Option A
- B. Option B
- C. Option C
- D. Option D

Answer: D

NEW QUESTION 418

A customer has a requirement to deploy a cloud service and needs to have full control over the underlying OS, data and application. Which cloud model meets this requirement?

- A. PaaS
- B. MaaS
- C. IaaS
- D. SaaS

Answer: C

Explanation:

Traditional IT is responsible for Application, Data, Runtime, Middleware, OS, Virtualization, Servers, Storage, Networking. IaaS = Infrastructure as a Service - is responsible for OS, Virtualization, Servers, Storage, Networking. SaaS = Software as a Service - Software deployed by the cloud provider - is responsible for nothing. PaaS = Platform as a Service - Software can be deployed by the customer building their own application | is responsible for Data and Application.

NEW QUESTION 419

An engineer is configuring HTTPS access to Cisco UCS Manager The engineer created a keyring and created the certificate request for the keyring Cisco UCS Manager continues to receive untrusted messages from a Firefox browser and a Chrome browser Which action must be taken as the next step in the HTTPS access configuration?

- A. Create a trusted point
- B. Sign the certificate using the Cisco UCS Manager.
- C. Obtain a validated certificate from Cisco
- D. Install a trusted certificate in the browser store

Answer: A

NEW QUESTION 423

An engineer must implement access control for Cisco UCS Manager. The configuration must meet these requirements.

- > All users and user groups must be configured using Active Directory.
- > User1 must have full access to the storage operations configuration.

Which action must be performed on Cisco UCS to meet the requirements?

- A. Create a custom role for the user and RADIUS for the role-mapping for Active Directory.
- B. Execute a built-in role for the user and LDAP for the role-mapping for Active Directory.
- C. Create a custom role for the user and LDAP for the role-mappings for Active Directory.
- D. Execute a built-in role for the user and RADIUS for the role-mapping for Active Directory.

Answer: B

NEW QUESTION 425

An administrator is implementing DCNM so that events are triggered when monitored traffic exceeds the configured present utilization threshold. The requirement is to configure a maximum limit of 39860437 bytes that applies directly to the statistics collected as a ratio of the total link capacity. Which DCNM performance monitoring configuration parameter must be implemented to achieve this result?

- A. Absolute Values
- B. Baseline
- C. Util%
- D. Per port Monitoring

Answer: A

NEW QUESTION 430

An engineer is implementing security on the Cisco MDS 9000 switch. Drag drop the descriptions from the left onto the correct security features on the right.

can be distributed via fabric services	Fabric Binding <div>Target 1</div> <div>Target 2</div>
uses the Exchange Fabric Membership Data protocol	
allows a preconfigured set of Fibre Channel devices to logically connect to SAN ports	Port Security <div>Target 3</div> <div>Target 4</div>
prevent unauthorized switches from joining the fabric or disrupting current fabric operations	

- A. Mastered
- B. Not Mastered

Answer: A

Explanation:

can be distributed via fabric services	Fabric Binding <div>prevent unauthorized switches from joining the fabric or disrupting current fabric operations</div> <div>uses the Exchange Fabric Membership Data protocol</div>
uses the Exchange Fabric Membership Data protocol	
allows a preconfigured set of Fibre Channel devices to logically connect to SAN ports	Port Security <div>can be distributed via fabric services</div> <div>allows a preconfigured set of Fibre Channel devices to logically connect to SAN ports</div>
prevent unauthorized switches from joining the fabric or disrupting current fabric operations	

NEW QUESTION 431

A customer asks an engineer to develop an orchestration solution to automate repetitive tasks. The customer operations team must integrate the tool with its existing automation framework. The customer asks for the tool to support these requirements:

- The customer's security requirements mandate the use of SSH transport.
- No extra software must be installed on the managed systems.
- The support staff has limited knowledge of scripting languages, so the solution must be easy to read and use declarative language.

Which solution meets these requirements?


```
N5K-Core# configure terminal
Enter configuration commands, one per line. End with CNTL/Z.
N5K-Core(config)# interface fc2/1
N5K-Core(config-if)# switchport speed 4000
N5K-Core(config-if)# no shutdown
N5K-Core(config)# interface fc2/2
N5K-Core(config-if)# no shutdown
N5K-Core(config)# monitor session 1
N5K-Core(config-monitor)# source interface fc2/1
N5K-Core(config-monitor)# destination interface fc2/2
N5K-Core(config-monitor)# no shutdown
```

- A. Configure the switchport monitor under interface fc2/2
- B. Configure the switchport mode SD under interface tc2/1.
- C. Configure switchport speed 4000 under interface fc2/2.
- D. Configure session type fc under monitor session 1.
- E. Configure the switchport mode SD under interface fc2/2.

Answer: CE

Explanation:

<https://www.cisco.com/c/en/us/td/docs/switches/datacenter/nexus5000/sw/configuration/guide/cli/CLIConfigurationGuide/Span.html>

NEW QUESTION 439

An engineer must perform a POAP deployment of a Cisco Nexus 9000 Series Switch. The switch must automatically receive its software image and configuration file upon power-on. Also, only UDP is permitted between the Nexus 9000 switch and the server that hosts the Cisco NX-OS system images. Which set of actions completes the configuration?

- A. Enable option 67. Define TFTP transfer protocol.
- B. Enable option 43. Define HTTP transfer protocol.
- C. Enable option 46. Define TFTP transfer protocol.
- D. Enable option 35. Define HTTP transfer protocol.

Answer: A

NEW QUESTION 441

A network engineer must configure a power redundancy policy on a Cisco UCS C-Series Rack Server. The power redundancy must support two power sources being used to power the server. Which configuration should be applied to meet the requirement?

- ☐ server# scope org /
server /org # scope psu-policy
server /org/psu-policy # set redundancy N+1
server /org/psu-policy* # commit-buffer
- ☐ server# scope org /
server /org # scope psu-policy
server /org/psu-policy # set psu-redundancy-policy grid
server /org/psu-redundancy-policy* # commit-buffer
- ☐ server# scope org /
server /org # scope psu-policy
server /org/psu-policy # set psu-redundancy-policy N+1
server /org/psu-redundancy-policy* # commit-buffer
- ☐ server# scope org /
server /org # scope psu-policy
server /org/psu-policy # set redundancy grid
server /org/psu-policy* # commit-buffer

- A. Option A
- B. Option B
- C. Option C
- D. Option D

Answer: D

Explanation:

https://www.cisco.com/c/en/us/td/docs/unified_computing/ucs/ucs-manager/CLI-User-Guides/Server-Mgmt/3-1 The command "N+1" is invalid. The command should be "n-plus-1"

	Command or Action	Purpose
Step 1	UCS-A# scope org org-name	Enters organization mode for the specified organization. To enter the root organization mode, type / as the org-name .
Step 2	UCS-A /org # scope psu-policy	Enters PSU policy mode.
Step 3	UCS-A /org/pSU-policy # set redundancy (grid n-plus-1 non-redund)	<p>Specifies one of the following redundancy types:</p> <ul style="list-style-type: none"> • grid –Two power sources are turned on, or the chassis requires greater than N+1 redundancy. If one source fails (which causes a loss of power to one or two PSUs), the surviving PSUs on the other power circuit continue to provide power to the chassis. • n-plus-1 –The total number of PSUs to satisfy non-redundancy, plus one additional PSU for redundancy, are turned on and equally share the power load for the chassis. If any additional PSUs are installed, Cisco UCS Manager sets them to a "turned-off" state. • non-redund –All installed power supplies (PSUs) are turned on and the load is evenly balanced. Only smaller configurations (requiring less than 2500W) can be powered by a single PSU. <p>For more information about power redundancy, see the Cisco UCS 5108 Server Chassis Installation Guide.</p>
Step 4	UCS-A /org/pSU-policy # commit-buffer	Commits the transaction to the system configuration.

NEW QUESTION 443

An engineer is performing a configuration on a Cisco Nexus 5000 Series Switch. The requirement is for the current Fibre Channel IDs in VSAN 120 to be saved across reboots. The Cisco environment also must integrate with a third-party solution that requires persistent Fibre Channel IDs for the VSAN The WWN of the Cisco switch must be 33:*8:00:05:30:00:16:df and its Fibre Channel ID 0x070128 Which command set meets these requirements?

- ☐ fabric-binding database vsan 120
vsan 120 wwn 33:e8:00:05:30:00:16:df fcid 0x070128
- ☐ vsan 120 wwn 33:e8:00:05:30:00:16:df fcid 0x070128
fcdomain fcid preserve vsan 120
- ☐ vsan 120 wwn 33:e8:00:05:30:00:16:df fcid 0x070128
fabric-binding activate vsan 120
purge fcdomain fcid vsan 4
- ☐ fcdomain fcid database
vsan 120 wwn 33:e8:00:05:30:00:16:df fcid 0x070128
fcdomain fcid persistent vsan 120

- A. Option A
- B. Option B
- C. Option C
- D. Option D

Answer: D

NEW QUESTION 444

Which storage protocol reduces file locks by using leasing?

- A. CIFS
- B. NFS 4
- C. NFS 3
- D. SMB

Answer: D

Explanation:

https://www.ciscolive.com/c/dam/r/ciscolive/apjc/docs/2016/pdf/BRKCOM-1211.pdf

- **SMB Directory Leasing**
 - Ability to cache file and directory metadata
 - Branch offices need to make less round trips to the central server

NEW QUESTION 445

An engineer must recover configuration on a Cisco MDS 9000 Series switch from a previous version that was backed up to bootflash and then verify the restoration.

Drag and drop the commands on the left to the correct order on the right.

copy bootflash:<conriguration_file> runring-config	Step 1
copy running-config startup-config	Step 2
show startup-config	Step 3
write erase	Step 4
reload	Step 5

- A. Mastered
- B. Not Mastered

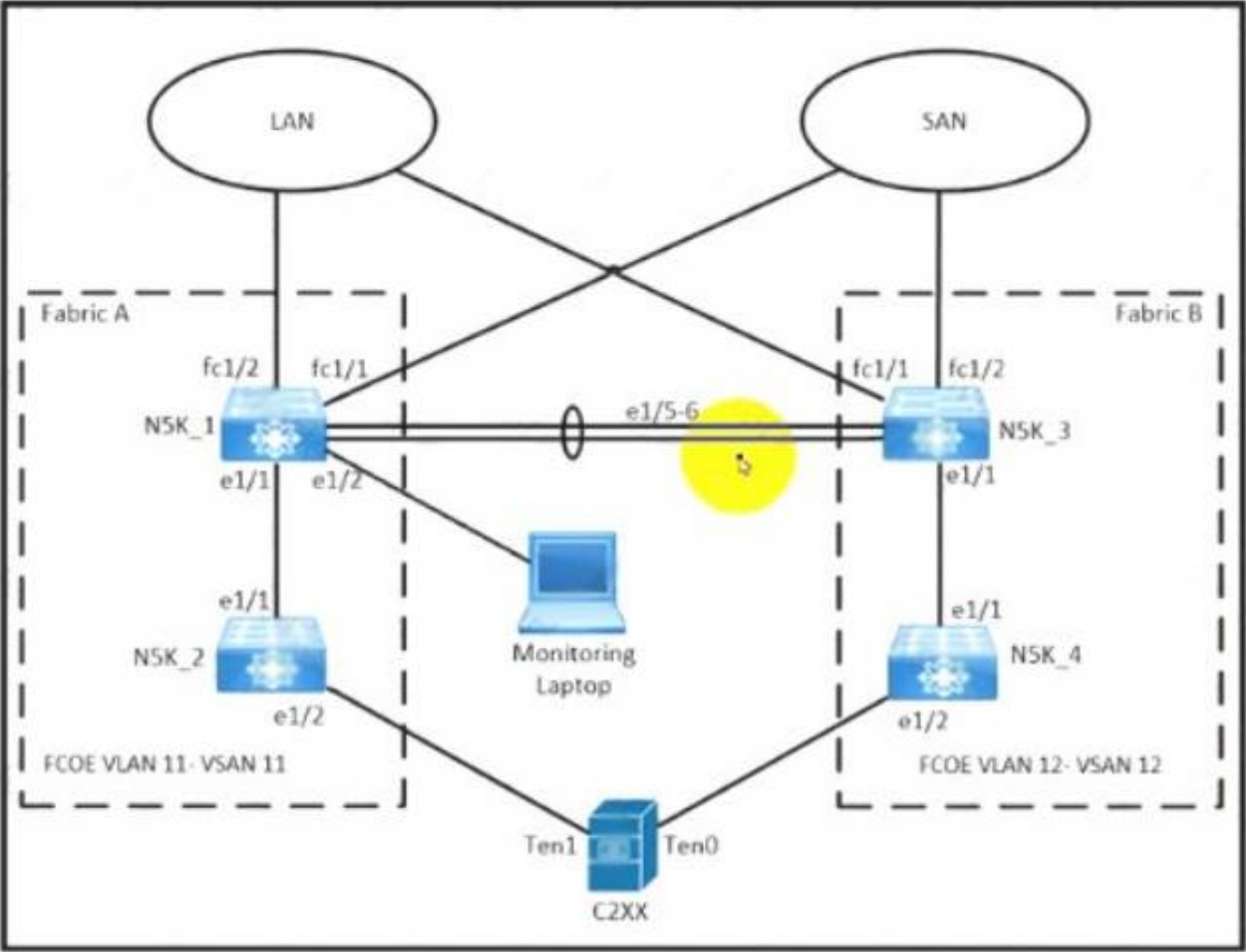
Answer: A

Explanation:

Graphical user interface, text, application, email Description automatically generated
https://www.cisco.com/c/en/us/td/docs/switches/datacenter/mds9000/sw/nx-os/configuration/guides/fund/ fund_nx-os_5-x/b_Cisco_MDS_9000_Series_NX-OS_Fundamentals_Configuration_Guide_Release_5-x/ b_Cisco_MDS_9000_Series_NX-OS_Fundamentals_Configuration_Guide_Release_5-x_chapter_01000.html

NEW QUESTION 448

Refer to the exhibit.



LAN / Traffic Monitoring Sessions / Fabric A / Monitor Session VSAN11-Session

General	Faults	Events
<div>Actions</div> <div>View Session Clear Destination Delete</div>		
<div>Properties</div> <div><div>Name: VSAN11-Session</div><div>Admin State: <input checked="" type="radio"/> Enabled <input type="radio"/> Disabled</div><div>Destination: <input type="text"/></div><div>Admin Speed: <input type="radio"/> 1 Gbps <input checked="" type="radio"/> 10 Gbps <input type="radio"/> 40 Gbps</div><div>Operational State: Unknown</div><div>Operational State Reason: Unknown</div><div>Configuration Success: Yes</div><div>Configuration Failure Reason: </div></div> <div>Source: <div><div><div>+</div> Uplink Ethernet Ports</div></div></div>		

An engineer is creating a SPAN session to send a copy of all the Fabric-A VSAN 11 traffic on NSK_1 to the monitoring laptop. The configurator that is presented

has already been applied to Cisco UCS Manager. Which action completes the configuration?

- A. Activate a NetFlow monitoring session
- B. Create a SAN traffic monitoring session
- C. Set VLAN 11 as the traffic destination
- D. Select VSAN 11 as the source of traffic.

Answer: C

NEW QUESTION 451

An engineer must configure an LACP port channel on two Cisco Nexus 7000 Series Switches. The interface e1/2 must be a hot-standby link that initiates negotiation with other ports. Drag and drop the commands from the right onto the blanks in the configuration on the left. Not all commands are used.

```

configure terminal
feature 
interface Ethernet 1/2
 switchport
 channel-group 2
interface Ethernet 1/3
 switchport
 channel-group 2 mode active
 lacp port
        
```

mode active

lacp

priority 1

mode passive

priority 65534

mode on

- A. Mastered
- B. Not Mastered

Answer: A

Explanation:

```

configure terminal
feature lacp
interface Ethernet 1/2
 switchport
 channel-group 2 mode active
interface Ethernet 1/3
 switchport
 channel-group 2 mode active
 lacp port priority 1
        
```

mode active

lacp

priority 1

mode passive

priority 65534

mode on

NEW QUESTION 454

Which action must be performed before renumbering a Cisco UCS chassis?

- A. Move the chassis to new ports on fabric interconnect.
- B. Re-acknowledge the chassis.
- C. Decommission the chassis.
- D. Run the shut and no shut command on the connected ports.

Answer: C

NEW QUESTION 456

An engineer troubleshoots an Fibre Channel deployment on a Cisco MDS 9000 Series Switch. What does this output indicate about port channel 1?


```
mds9509# show int po1
port-channel 1 is trunking
Hardware is Fibre Channel
Port WWN is 24:01:00:0d:ec:20:ba:00
Admin port mode is F, trunk mode is on
snmp link state traps are enabled
Port mode is TF
Port vsan is 1
Speed is 8 Gbps
Trunk vsans (admin allowed and active) (1,20)
Trunk vsans (up) (1,20)
Trunk vsans (isolated) ()
Trunk vsans (initializing) ()
5 minutes input rate 112 bits/sec, 14 bytes/sec, 0 frames/sec
5 minutes output rate 152 bits/sec, 19 bytes/sec, 0 frames/sec
25787798 frames input, 14359038212 bytes
0 discards, 0 errors
0 CRC, 0 unknown class
0 too long, 0 too short
23082 frames output, 1013152 bytes
0 discards, 0 errors
18 input OLS, 14 LRR, 29 NOS, 0 loop inits
17 output OLS, 0 LRR, 21 NOS, 0 loop inits
Member[1] : fc4/2
Member[2] : fc4/8
Interface last changed at Thu Mar 6 06:27:36 2020
```

- A. Port channel 1 is configured to be an ISL.
- B. Port channel 1 is configured to connect to a host bus adapter.
- C. Port channel 1 is configured to connect to an NPIV switch.
- D. Port channel 1 is configured to connect to an NPV switch.

Answer: A

NEW QUESTION 457

Refer to the exhibit.

```
switch(config)# feature dhcp
switch(config)# ip dhcp snooping
switch(config)# service dhcp
switch(config)# ip dhcp snooping vlan 100,200,250-252
switch(config)# ip dhcp relay information option
```

Which action is taken to ensure that the relay agent forwards the DHCP BOOTREQUEST packet to a DHCP server?

- A. Configure the interface of the DHCP server as untrusted.
- B. Configure the IP address of the DHCP server.
- C. Enable the DHCP relay agent.
- D. Verify the DHCP snooping bindings.

Answer: B

Explanation:

https://www.cisco.com/c/en/us/td/docs/switches/datacenter/sw/4_0/dcnm/security/configuration/guide/sec_dcnm Text Description automatically generated

Configuring a DHCP Server Address on a VLAN Interface

You can configure a DHCP server IP address on a VLAN interface (sometimes referred to as a switched virtual interface or SVI). When an inbound DHCP BOOTREQUEST packet arrives on the VLAN interface, the relay agent forwards the packet to the IP address specified.

NEW QUESTION 458

An engineer must suggest a deployment model for a newly developed application. The engineer has a small starting budget and lacks technical knowledge and infrastructure to implement storage, operating system, and database services to support the application deployment. The engineer also needs usage data related to the service and the ability to elastically scale the deployment as customer demands grow. Which two models must be used to meet the requirements? (Choose two.)

- A. private cloud
- B. platform as a service
- C. software as a service
- D. infrastructure as a service
- E. public cloud

Answer: DE

NEW QUESTION 463

Which statement is true about upgrading the firmware on a Cisco MDS storage switch with dual supervisors?

- A. The standby supervisor must be offline before the firmware upgrade begins.
- B. Both supervisors load the new firmware and then the active supervisor reboots.
- C. Supervisors can be upgraded independently to test the new firmware.
- D. The new firmware is load on the standby supervisor first.

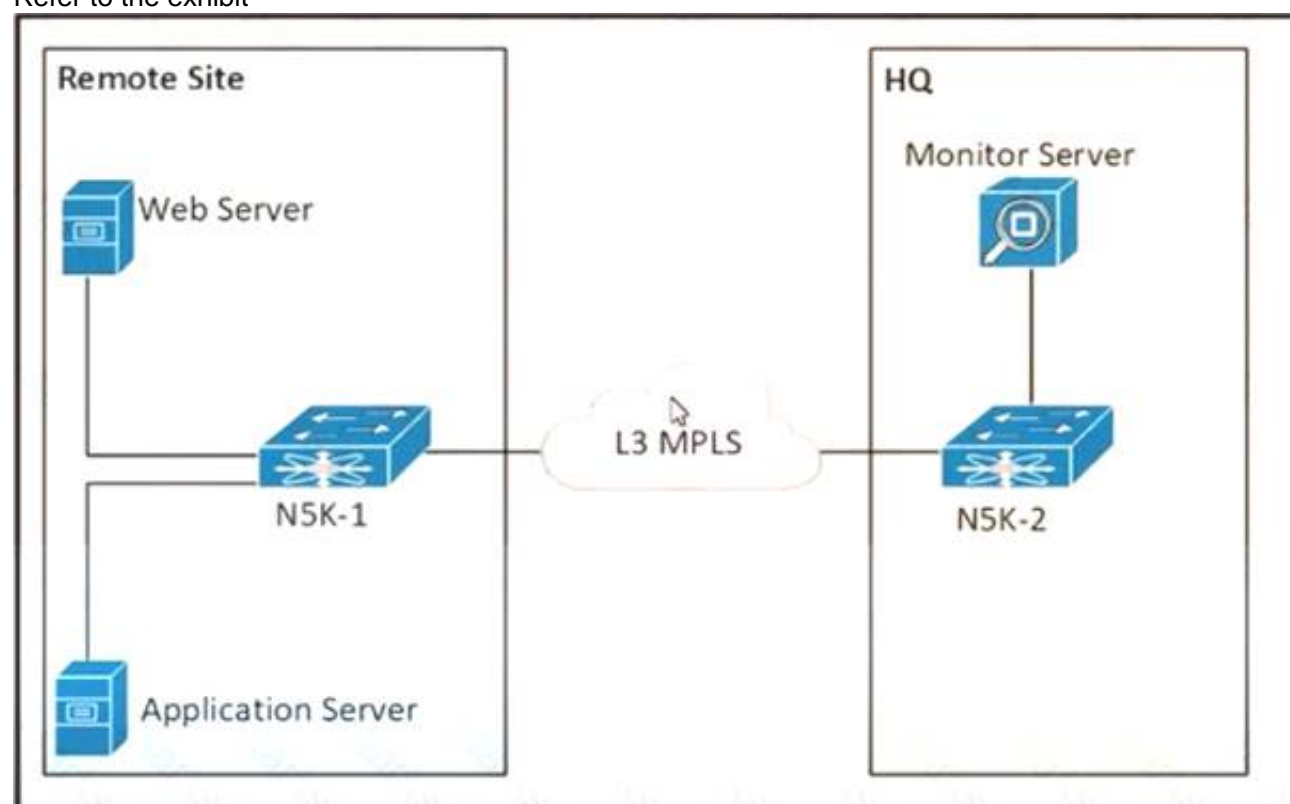
Answer: D

Explanation:

<https://www.cisco.com/c/en/us/support/docs/storage-networking/mds-9000-nx-os-san-os-software/118952-technote-mds9k-00.html#:~:text=On%20a%2095xx%20or%2097xx,becomes%20the%20new%20standby%20supervisor.>

NEW QUESTION 466

Refer to the exhibit



The communication between the web server and the application server experiences poor performance The network engineer must collect the traffic between the two servers, including the payload for more investigation The collected data must be sent from the remote site to the headquarters. Which action accomplishes this goal?

- A. Configure an ERSPAN session between N5K-1 and N5K-2.
- B. Configure a SPAN session between N5K-1 and N5K-2
- C. Configure SNMP on N5K-1 to send the data to the monitor server
- D. Configure NetFlow on N5K-1 to send the data to the monitor server

Answer: A

NEW QUESTION 471

An engineer must apply AAA configuration on a Cisco MDS 9000 Series Switch. The solution must meet these conditions:

- It must use a challenge-response authentication protocol that uses MD5 hashing with an incrementally changing identifier
- The RADIUS configuration must t>e automatically shared with other MDS switches in the environment.

The RADIUS server is already defined. Which command set completes the configuration?

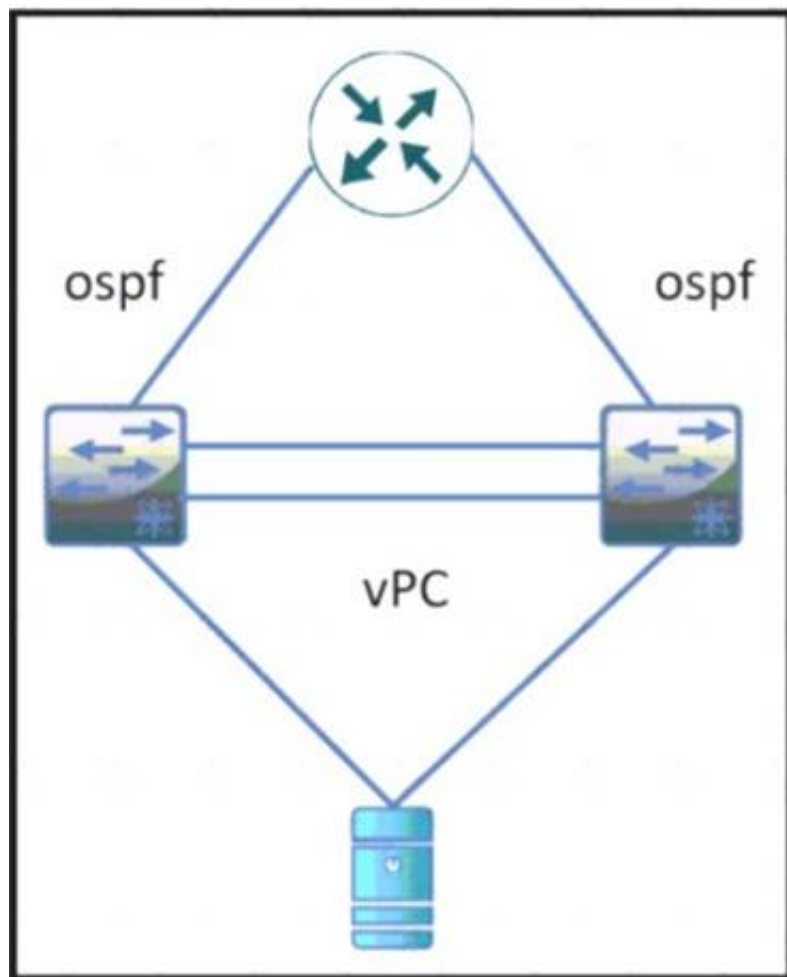
- ☐ aaa authentication login pap enable
 distribute radius
 radius-server host 10.8.8.0 auth-port 1821
- ☐ aaa authentication login mschapv2 enable
 radius propagate
 radius authentication port 1821
- ☐ aaa authentication login chap enable
 radius distribute
 radius commit
- ☐ aaa authentication login mschap enable
 radius commit
 radius-server host 10.8.8.0

- A. Option A
- B. Option B
- C. Option C
- D. Option D

Answer: C

NEW QUESTION 474

Refer to the exhibit



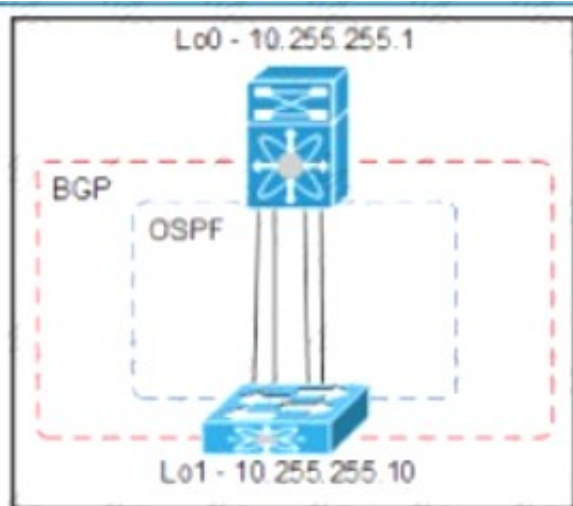
During a vPC peer switch reload, there is packet loss between the server and the router Which action must be taken to prevent this behavior during future reloads?

- A. Set the routed uplink ports of the Cisco Nexus peers as orphans.
- B. Increase the vPC delay restore timer.
- C. Decrease the OSPF hello and dead interval timers.
- D. Disable vPC ARP synchronize on the vPC peers.

Answer: B

NEW QUESTION 476

Refer to the exhibit



An engineer must provision a VXLAN deployment The OSPF has already been configured as the underlay protocol All BGP configurations will be performed using the template method The deployment must meet these requirements

- > The local update source for leaf switches must be loopback 1
 - > The router ID must be the local loopback IP address
 - > The external BGP connections must use a template name
- Drag and drop the configuration snippets from the bottom to complete the configuration


```

router bgp 65000
  router-id 
  template peer SPINE
  bfd
  remote-as 
  update-source loopback1
  timers 3 9
  address-family  peer
    send-community extended
  neighbor 
    peer SPINE

```

10.255.255.1	inherit	65000
10.255.255.10	12vpn	evpn

- A. Mastered
 B. Not Mastered

Answer: A

Explanation:

```

router bgp 65000
  router-id 10.255.255.10
  template peer SPINE
  bfd
  remote-as 65000
  update-source loopback1
  timers 3 9
  address-family 12vpn evpn
    send-community extended
  neighbor 10.255.255.1
    inherit peer SPINE

```

10.255.255.1	inherit	65000
10.255.255.10	12vpn	evpn

NEW QUESTION 477

What are two requirements when planning a Cisco HyperFlex All Flash standard cluster installation using three HX240c M5 servers? (Choose Two)

- A. If the Jumbo MTU option in the HyperFlex installer is enabled, then jumbo frames do not have to be enabled on the upstream switches.
 B. The hypervisors must be installed to Cisco FlexFlash SD cards.
 C. If the Jumbo MTU option in the HyperFlex installer is enabled, then jumbo frames must also be enabled on the upstream switches.
 D. The cluster deployment type must support a mix of HDD and SSD.
 E. The servers must be discovered, unassociated, and connected to each fabric interconnect.

Answer: CE

Explanation:

https://www.cisco.com/c/en/us/td/docs/hyperconverged_systems/HyperFlex_HX_DataPlatformSoftware/AdminGuide/3_5/b_HyperFlexSystems_AdministrationGuide_3_5/b_HyperFlexSystems_AdministrationGuide_3_5_chapter_011

NEW QUESTION 478

An engineer must integrate Cisco ACI with a VMware vSphere environment. The requirement is to use a VMware Distributed Virtual Switch and to assign the

encapsulation VLAN of the EPG from the VLAN pool. Which configuration set accomplishes this goal?

- A. Create a VMM domain association under the EPGs Create a VLAN pool with static allocated VLANs.
- B. Create a physical domain association under the EPGs Create a VLAN pool with static allocated VLANs.
- C. Create a physical domain association under the EPG
- D. Create a VLAN pool with oVnarmc allocated VLANs
- E. Create a VMM domain association under the EPGs Create a VLAN pool with dynamic allocated VLANs.

Answer: D

NEW QUESTION 482

Refer to the exhibit.

```
Step 20 Enter no (no is the default) if you are satisfied with the configuration.

The following configuration will be applied:

switchname CiscoMDS
interface mgmt0
  ip address 192.168.10.10
  subnetmask 255.255.255.0
  no shutdown
ip default-gateway 192.168.10.1
telnet server enable
no ssh server enable
no system default switchport shutdown
system default switchport trunk mode on
no zone default-zone permit vsan 1-4093
zoneset distribute full vsan 1-4093
Would you like to edit the configuration? (yes/no) [n]: no

Step 21 Enter yes (yes is default) to use and save this configuration.

Use this configuration and save it? (yes/no) [y]: yes
```

An engineer is configuring a Cisco MDS 9000 Series Switch for the first time. After the initial setup process, the name server at IP 192.168.10.11 is missing from the configuration. Which set of actions completes the configuration?

- A. Enter no at step 21 and reinitialize the install
- B. Press the Esc key to access ROMMON mode.
- C. Enter no at step 21 and reload the switch
- D. Configure the advanced IP options.
- E. Enter yes at step 21 to edit the configuration
- F. Add the line dns-server 192.168.10.11.
- G. Enter yes at step 21 and log in
- H. Modify the startup configuration DNS

Answer: B

NEW QUESTION 487

An engineer is implementing traffic monitoring for a server vNIC that is configured with fabric failover enabled. The requirement is for the traffic to be sent to an analyzer, even during a failure of one of the fabric interconnects. The analyzer is connected to unconfigured Ethernet ports on both fabric interconnects. Which configuration accomplishes this task?

- A. Create two traffic monitoring sessions with different names, one per fabric Connect the analyzer connected to FI-BI the destination for both monitoring sessions.
- B. Create two traffic monitoring sessions with different names, one per fabric.
- C. Connect an analyzer on each FI as the destination for the monitoring session local to the FI.
- D. Create two traffic monitoring sessions with the same name, one per fabric Connect the analyzer connected to FI-A as the destination for both monitoring sessions

Answer: A

NEW QUESTION 489

An engineer must affirm the identity of the Cisco UCS Manager after a valid CA-signed keyring for HTTPS access is created. Which action completes the configuration?

- A. Set Cipher Suite Mode
- B. Create a trusted point
- C. Implement SSLv3
- D. Enable TLSv1.2

Answer: B

NEW QUESTION 494

An engineer is configuring a vHBA template in UCS Manager. The engineer needs to specify the logical addresses used by the vHBA and the path through which the SAN traffic flows. Which two resources must be specified in the vHBA template? (Choose two.)

- A. MAC addresses
- B. WWPNPool
- C. WWNN
- D. VLAN ID
- E. Fabric ID

Answer: BE

Explanation:

vNIC and vHBA Templates

vNIC and vHBA resources are always associated with specific FIs (A-side or B-side fabric interconnect). A typical Service Profile has at least two vNICs and two vHBAs: one bound to each side. vNIC (or vHBA) templates can be used to encapsulate both the MAC address pool (or WWPN pool) association as well as the fabric ID.

Best Practice: vNIC and vHBA Templates

Create reusable vNIC and vHBA templates in which termination is either reflected in the name (e.g., "fc0-A") or through well-accepted conventions (e.g., even interface to A side, and odd interface to B side).

vNIC templates should be thought of as application-specific network profiles that include important security definitions, such as VLAN mappings, as shown in Figure 6.

https://www.cisco.com/c/en/us/products/collateral/servers-unified-computing/ucs-manager/whitepaper_c11-697

NEW QUESTION 499

Which mroute state is created when Bidirectional PIM is deployed at a site?

- A. MVPN Type-6
- B. *,G
- C. MVPN Type-7
- D. S,G

Answer: B

Explanation:

Bidirectional PIM has been invented for networks where we have many sources and receivers talking to each other. PIM Sparse mode RP builds 2 entries *, G and S, G but when we use PIM bidirectional mode, the RP will never build a S,G entry and, it only allow the *,G entry.

https://www.cisco.com/c/en/us/td/docs/ios-xml/ios/ipmulti_pim/configuration/xr-16-5/imc-pim-xr-16-5-book/im and <https://networklessons.com/multicast/multicast-bidirectional-pim>

NEW QUESTION 500

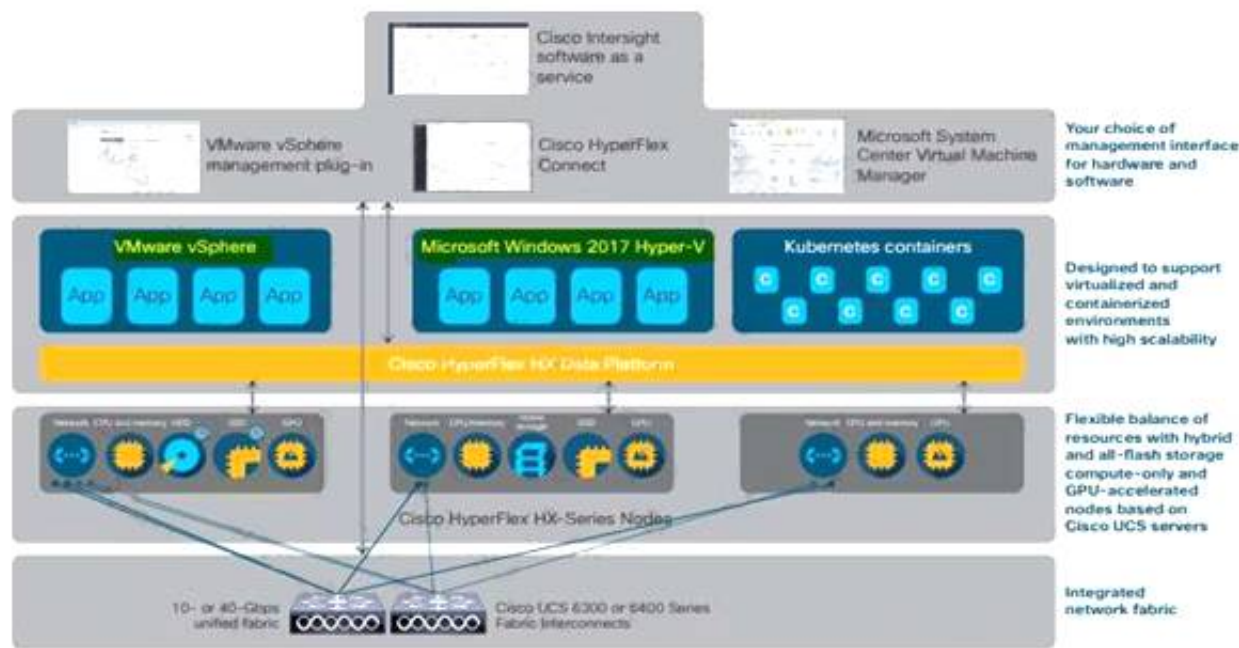
Which two hypervisors does Cisco HyperFlex support? (Choose two.)

- A. VMware vSphere
- B. Microsoft Hyper-V
- C. OpenStack
- D. Citrix XenServer
- E. RedHat KVM

Answer: AB

Explanation:

The Cisco HyperFlex platform is faster to deploy, simpler to manage, easier to scale, and ready to provide a unified pool of resources to power your business applications. You harness these resources with your choice of centralized management tools: Cisco Intersight™ software as a service, Cisco HyperFlex Connect, Microsoft System Center Virtual Machine Manager.



<https://www.cisco.com/c/dam/en/us/products/collateral/hyperconverged-infrastructure/hyperflex-hx-series/solution-overview-c22-736815.pdf>

NEW QUESTION 503

A small remote office is set to connect to the regional hub site via NSSA ASBR. Which type of LSA is sent to the remote office OSPF area?

- A. type 7 LSA
- B. type 3 LSA
- C. type 1 LSA
- D. type 5 LSA

Answer: A

NEW QUESTION 505

Which component is excluded by default from the host firmware package?

- A. network interface controller
- B. board controller
- C. storage controller
- D. local disk

Answer: D

NEW QUESTION 506

An engineer must configure OSPFv2 connectivity between a pair of Cisco Nexus switches. The connection between the switches must meet these requirements:

- Use unicast for updates.
- Use decentralized communication of updates.
- Full adjacency between switches.

Which configuration is needed to meet these requirements?

- A. interface with a type of p2p network
- B. stub area between the neighbors
- C. filter list between the neighbors
- D. virtual link between the neighbors

Answer: A

NEW QUESTION 509

A DevOps engineer must implement a bash script to query a REST API and return the available methods. Which code snippet completes the script?

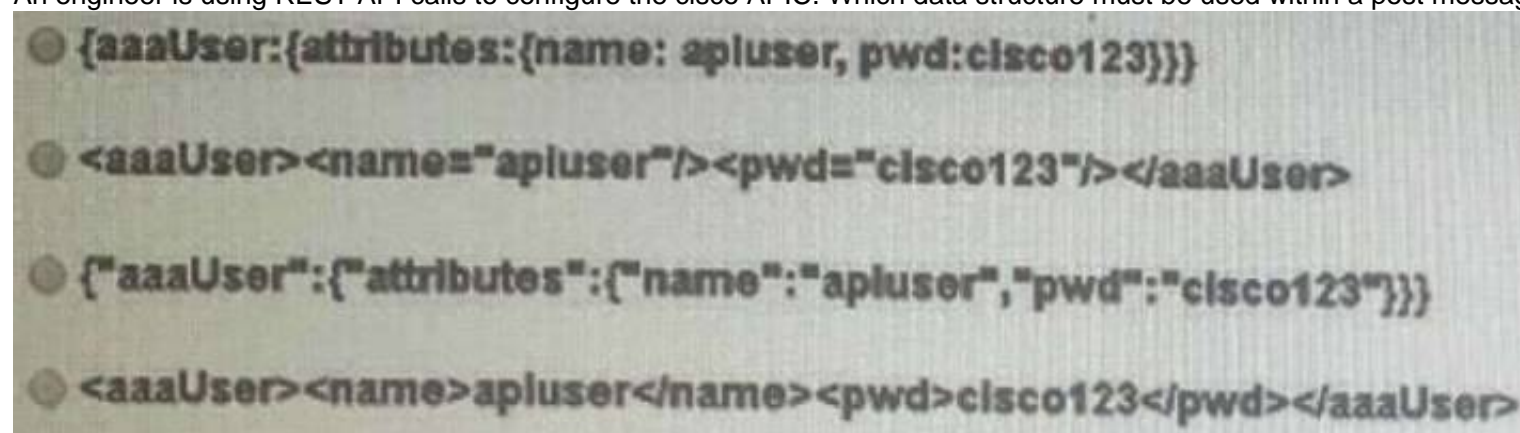
```
curl -i -X --missing code-- http://api.cisco.com:8080/api -u admin:XT41M5P3X425VOE71NB5D
```

- A. DELETE
- B. TRACE
- C. POST
- D. OPTIONS

Answer: C

NEW QUESTION 514

An engineer is using REST API calls to configure the cisco APIC. Which data structure must be used within a post message to receive a login token?



- A. Option A
- B. Option B
- C. Option C
- D. Option D

Answer: C

Explanation:

- **aaaListDomains** –Sent as a GET message, this method returns a list of valid AAA login domains. You can send this message without logging in.

You can call the authentication methods using this syntax, specifying either JSON or XML data structures:

```
{ http | https } :// host [:port] /api/ methodName . { json | xml }
```

This example shows a user login message that uses a JSON data structure:

```
POST https://apic-ip-address/api/aaaLogin.json
```

```
{
  "aaaUser" : {
    "attributes" : {
      "name" : "georgewa",
      "pwd" : "paSSword1"
    }
  }
}
```

https://www.cisco.com/c/en/us/td/docs/switches/datacenter/aci/apic/sw/2-x/rest_cfg/2_1_x/b_Cisco_APIC_REST_API_Configuration_Guide/b_Cisco_APIC_REST_API_Configuration_Guide_chapter_0

NEW QUESTION 517

A bridge domain is being extended out of a Cisco ACI fabric. Between which of these components are policies used to identify the connectivity between Endpoint Groups and the external connection?

- A. an external bridge domain and an external routed domain
- B. internal contracts and external contracts
- C. internal EPGs and external EPGs
- D. L2Out and L3Out

Answer: D

NEW QUESTION 522

An engineer is running an ACI fabric, has VMM integration with VMware vCenter, and wants to enable microsegmentation based on vCenter VM attributes. Which statement about microsegmentation is true?

- A. ACI does not support microsegmentation based on vCenter VM attribute
- B. You should use network attributes for microsegmentation.
- C. An ACI microsegmented EPG automatically creates a port group with a private VLAN configured on a VMware vCenter distributed virtual switch.
- D. When enabled, microsegmentation performs distributed switching and routing on the ESXi hosts.
- E. Microsegmentation is supported only using AVE or AVS.

Answer: B

Explanation:

<https://www.cisco.com/c/en/us/td/docs/switches/datacenter/aci/apic/sw/4-x/virtualization/Cisco-ACIVirtualizati>

NEW QUESTION 526

.....

THANKS FOR TRYING THE DEMO OF OUR PRODUCT

Visit Our Site to Purchase the Full Set of Actual 350-601 Exam Questions With Answers.

We Also Provide Practice Exam Software That Simulates Real Exam Environment And Has Many Self-Assessment Features. Order the 350-601 Product From:

<https://www.2passeasy.com/dumps/350-601/>

Money Back Guarantee

350-601 Practice Exam Features:

- * 350-601 Questions and Answers Updated Frequently
- * 350-601 Practice Questions Verified by Expert Senior Certified Staff
- * 350-601 Most Realistic Questions that Guarantee you a Pass on Your FirstTry
- * 350-601 Practice Test Questions in Multiple Choice Formats and Updatesfor 1 Year