



Microsoft

Exam Questions PL-200

Microsoft Power Platform Functional Consultant

About ExamBible

[Your Partner of IT Exam](#)

Found in 1998

ExamBible is a company specialized on providing high quality IT exam practice study materials, especially Cisco CCNA, CCDA, CCNP, CCIE, Checkpoint CCSE, CompTIA A+, Network+ certification practice exams and so on. We guarantee that the candidates will not only pass any IT exam at the first attempt but also get profound understanding about the certificates they have got. There are so many alike companies in this industry, however, ExamBible has its unique advantages that other companies could not achieve.

Our Advances

* 99.9% Uptime

All examinations will be up to date.

* 24/7 Quality Support

We will provide service round the clock.

* 100% Pass Rate

Our guarantee that you will pass the exam.

* Unique Gurantee

If you do not pass the exam at the first time, we will not only arrange FULL REFUND for you, but also provide you another exam of your claim, ABSOLUTELY FREE!

NEW QUESTION 1

- (Exam Topic 1)

You need to design the resort portal's email registration process.

Which solutions should you use? To answer, select the appropriate options in the answer area. NOTE: Each correct selection is worth one point.

Requirement	Solution
Implement the invitation code redemption process.	<div>Auto-populate the invitation code field on the sign-in screen from the email link.</div> <div>Embed the invitation code in the email link URL.</div> <div>Send the customer their username and temporary password in the email link.</div>
Validate the user's email.	<div>Two-factor authentication</div> <div>Azure Active Directory authentication</div> <div>Social provider sign-in</div> <div>Invitation code sign-up</div>

A. Mastered

B. Not Mastered

Answer: A

Explanation:

Requirement	Solution
Implement the invitation code redemption process.	<div>Auto-populate the invitation code field on the sign-in screen from the email link.</div> <div>Embed the invitation code in the email link URL.</div> <div>Send the customer their username and temporary password in the email link.</div>
Validate the user's email.	<div>Two-factor authentication</div> <div>Azure Active Directory authentication</div> <div>Social provider sign-in</div> <div>Invitation code sign-up</div>

NEW QUESTION 2

- (Exam Topic 3)

You create a Power Apps app.

The app must be able to display a list of records that are sorted by category. The app must also expand or hide the list by subtopics.

You need to configure the app. Which tool should you use?

A. card

B. expression

C. Power BI dashboard

D. gallery

Answer: C

NEW QUESTION 3

- (Exam Topic 3)

You need to design the FAQ solution to handle unknown responses.

Which component should you use? To answer, select the appropriate options in the answer area. NOTE: Each correct selection is worth one point.

Requirement	Component
Handle an unknown question from a guest in a conversation.	<div><div></div><div>Escalate</div><div>Fallback topic</div><div>Failure path</div></div>
Redirect a quest with an unknown question to a live staff member.	<div><div></div><div>Power Apps</div><div>Power Virtual Agents web application</div><div>Microsoft Teams</div><div>Omnichannel for Dynamics 365 Customer Service</div></div>

- A. Mastered
B. Not Mastered

Answer: A

Explanation:

Reference:

<https://docs.microsoft.com/en-us/power-virtual-agents/advanced-hand-off>

NEW QUESTION 4

- (Exam Topic 3)

A company uses three apps to complete several business processes.

You need to identify solutions to help the company perform regression testing when the apps are updated. Which two tools should you use? Each correct answer presents part of the solution.

NOTE: Each correct selection is worth one point.

- A. Power Automate automated flow
B. Windows recorder (V1)
C. Power Automate desktop flow
D. Windows Steps Recorder

Answer: BD

NEW QUESTION 5

- (Exam Topic 3)

You create and publish a Power BI report that contains an embedded canvas app. The report will be used by multiple people.

The canvas app has an issue that must be corrected. You update the canvas app.

You need to ensure that the updated canvas app is available in the published Power BI report. What should you do?

- A. Publish the Power BI report from Power BI Desktop.
B. Manually refresh the data source on the published Power BI report.
C. Publish the Power BI report from Power BI Desktop and reshare to any users.
D. Publish the canvas app.

Answer: B

Explanation:

➤ If you change the data fields associated with the visual, you must edit the app from within the Power BI service by selecting the ellipsis (...) and then selecting Edit. Otherwise, the changes won't be propagated to Power Apps, and the app will behave in unexpected ways.

➤ The Power Apps visual can't trigger a refresh of Power BI reports and Power BI data sources from within Power BI Desktop. If you write back data from the app to the same data source as the report, your changes won't be reflected immediately in Power BI Desktop. Changes are reflected on the next scheduled refresh.

Reference:


<https://docs.microsoft.com/en-us/powerapps/maker/canvas-apps/powerapps-custom-visual#limitations-of-the-po>

NEW QUESTION 6

- (Exam Topic 3)

You are a Dynamics 365 help desk administrator

You need to create a dashboard that displays information on help desk cases that are handled each week. Which dashboard components should you use? To answer, select the appropriate options in the answer area. NOTE: Each correct selection is worth one point.

Answer Area	Requirement	Component type
	Add a tag chart by using opened cases.	<div>System chart</div> <div>Personal chart</div> <div>Area chart</div>
	Add a stacked column chart shared with your team.	<div>System chart</div> <div>Personal chart</div> <div>Area chart</div>
	Add a Microsoft Power BI visualization.	<div>System chart</div> <div>Personal chart</div> <div>Area chart</div>
	Add a chart from a view that a user creates.	<div>System chart</div> <div>Personal chart</div> <div>Area chart</div>
	Add a doughnut chart that shows cases by owner.	<div>System chart</div> <div>Personal chart</div> <div>Area chart</div>

- A. Mastered
- B. Not Mastered

Answer: A

Explanation:
System Personal Personal
Personal System
<https://docs.microsoft.com/en-us/dynamics365/customer-engagement/basics/add-edit-power-bi-visualizations-da>

NEW QUESTION 7

- (Exam Topic 3)
Your organization does not permit the use of custom code for solutions. You need to create a view that can be viewed by all users in an organization. Where should you create the view?
- A. Microsoft Visual Studio
 - B. Maker portal
 - C. Advanced Find
 - D. System Settings

Answer: C

Explanation:
Reference:
<https://docs.microsoft.com/en-us/powerapps/maker/model-driven-apps/create-edit-views-app-designer>

NEW QUESTION 8

- (Exam Topic 3)
You need to create a system chart for the Account entity.
The chart must display a count of accounts grouped by owner and then display the accounts by Address 1: State/Province for each owner. You begin to configure chart options as shown in the image below.

PowerApps

FILE

HOME

?

Save

Save & Close

Save As

Column

Bar

Area

Line

Pie

Funnel

Tag

Doughnut

Top X Rule

Bottom X Rule

Clear Rules

Save

Charts


Top Bottom Rules

Working on solution: Default Solution

View used for chart preview

Active Accounts

Accounts by Owner and Address 1: State/Province



Legend Entries (Series)

☐ Select Field

Aggregate

+ Add a series

Horizontal (Category) Axis Labels

Selected Field

Selected Field

+ Add a category

Description

+ New step

Save

How should you complete the configuration? To answer, select the appropriate options in the answer area.

NOTE: Each correct selection is worth one point. The chart must display a count of accounts grouped by owner, and then display the accounts by Address 1 to State/Province for each owner.

Component	Selection
Legend Entries (Series): Select Field	<div>Account</div> <div>Address 1: State/Province</div> <div>Owner</div>
Legend Entries (Series): Aggregate	<div>Avg</div> <div>Count:All</div> <div>Sum</div>
Horizontal (Category) Axis Labels: Select Fields	
First grouping field	<div>Account</div> <div>Address 1: State/Province</div> <div>Owner</div>
Second grouping field	<div>Account</div> <div>Address 1: State/Province</div> <div>Owner</div>

- A. Mastered
- B. Not Mastered

Answer: A

Explanation:

Graphical user interface, text, application Description automatically generated

Graphical user interface, text, application Description automatically generated

NEW QUESTION 9

- (Exam Topic 3)

You create a new solution for a business process.

The business process includes uploading specific file types to a web service.

You need to ensure that the business process works the same way anywhere the solution is deployed. Which option should you use? To answer, drag the appropriate options to the correct configurations. Each

option may be used once, more than once, or not at all. You may need to drag the split bar between panes or scroll to view content.

NOTE: Each correct selection is worth one point.

Options

Connection reference

Environment variable

Solution system settings

Answer Area

Configuration

Blocked file types

URL to a web service

Option

Option

Option

- A. Mastered
- B. Not Mastered

Answer: A

Explanation:

Box 1: Solution system settings

For Power Apps in Settings > Customizations > Customize the System you can configure email and document management, activate or deactivate processes, and more.

Box 2: Environment variable

When should Environment variables be used? Some examples include:

When an input parameter needs to change across environments and should not be hard-coded. For example, a URL that points to a different resource in development and production environments.

If you're building a solution where your customer is required to provide an input value. Application setup pages.

Incorrect:

A connection reference is a solution component that contains information about a connector. Reference:

<https://docs.microsoft.com/en-us/powerapps/maker/model-driven-apps/advanced-navigation> <https://powerapps.microsoft.com/en-us/blog/environment-variables-available-in-preview/>

NEW QUESTION 10

- (Exam Topic 3)

You are configuring Microsoft Dataverse security. You plan to assign users to teams. Record ownership and permissions will differ based on business requirements.

You need to determine which team types meet the requirements.

Which team type should you use? To answer, drag the appropriate team types to the correct requirements. Each team type may be used once, more than once, or not at all. You may need to drag the split bar between panes or scroll to view content.

NOTE: Each correct selection is worth one point.

Team types

Access team

Azure Active Directory group team

Microsoft Teams team

Answer area

Requirement

Ability to own records in Dataverse

Provides permissions without a security role assigned

Team Type

- A. Mastered
- B. Not Mastered

Answer: A

Explanation:

Box 1: Microsoft Teams team

Dataverse supports two types of record ownership. Organization owned, and User or Team owned. This is a choice that happens at the time the table is created and can't be changed. For security purposes, records that are organization owned, the only access level choices is either the user can do the operation or can't. For user and team owned records, the access level choices for most privileges are tiered Organization, Business Unit, Business Unit and Child Business Unit or only the user's own records. That means for read privilege on contact, I could set user owned, and the user would only see their own records.

Box 2: Access team

An access team doesn't own records and doesn't have security roles assigned to the team. The team members have privileges defined by their individual security roles and by roles from the teams in which they are members. The records are shared with an access team and the team is granted access rights on the records, such as Read, Write or Append.

Reference:

<https://docs.microsoft.com/en-us/power-platform/admin/wp-security-cds>

<https://docs.microsoft.com/en-us/powerapps/developer/data-platform/use-access-teams-owner-teams-collaborate>

NEW QUESTION 10

- (Exam Topic 3)

You are creating a business process flow for a Power Apps app. The business process flow must meet the following requirements:

- Must be available offline.
- Send an email to the team when a record is created. You need to set up business process flow.

What should you do? To answer, select the appropriate options in the answer area. Each correct selection is worth one point

Requirement	Configuration
Make it available offline.	<input type="checkbox"/> Ensure that the business process flow is referencing one table. <input type="checkbox"/> Ensure that the business process flow is referencing two tables. <input type="checkbox"/> Ensure that the business process flow is referencing one table per stage.
Send an email to the team.	<input type="checkbox"/> Create a step. <input type="checkbox"/> Create a stage. <input type="checkbox"/> Create a required column.

- A. Mastered
- B. Not Mastered

Answer: A

Explanation:

Graphical user interface, text, application Description automatically generated

NEW QUESTION 14

- (Exam Topic 3)

You create a Power Apps app for Microsoft Teams using Microsoft Dataverse for Teams. Users report that they are unable to view the app in Teams. You need to ensure that users can access the app. What should you do?

- A. Share the app with a security group by using the Maker portal.
- B. Share the app with a security group in Teams.
- C. Request that a tenant administrator pin the app to the app bar in Teams.
- D. Publish the app by using the Maker portal.
- E. Share the app with individual users by using the Maker portal.

Answer: C

NEW QUESTION 17

- (Exam Topic 3)

You are a Dynamics 365 Customer Service help desk administrator.

Cases entered in forms require different types of data to be stored in different types of fields. You need to create forms for each of the following case types:

Case type	Requirement
Case type A	A new case form that includes a timeline
Case type B	A new case form that includes a business process flow
Case type C	A new case form that can display case data on an interactive dashboard
Case type D	A new mobile-friendly case form that requires minimal fields for record creation
Case type E	A new mobile-friendly case form that displays the subject, case title, and status fields from a parent case

Which form types should you create? To answer, drag the appropriate form types to the meet the data entry requirements. Each source may be used once, more than once, or not at all. You may need to drag the split bar between panes or scroll to view content.

NOTE: Each correct selection is worth one point.

Form types

quick create

main

quick view

card

Answer Area

Case type

Case type A

Case type B

Case type C

Case type D

Case type E

Form type

Form type

Form type

Form type

Form type

- A. Mastered
B. Not Mastered

Answer: A

Explanation:

Reference:
<https://docs.microsoft.com/en-us/dynamics365/customer-service/create-design-forms-customer-service-hub>

NEW QUESTION 21

- (Exam Topic 3)
You manage Dynamics 365 for a company.
You must prevent users from launching and using Power Automate. You need to hide the Flows button on the user interface.
Which configuration setting should you change?

- A. the Customizations section of System Settings
B. the Site Map
C. the Buttons tab of Flow
D. the Entity component of the default solution

Answer: A

Explanation:

Reference:
<https://www.inogic.com/blog/2018/10/show-or-hide-microsoft-flow-button-in-dynamics-365/>

NEW QUESTION 25

- (Exam Topic 3)
A company uses Power Apps.
You create a custom table and configure a child table relationship with the contact table. You need to configure the cascading rules for each action.
Which behavior should you use? To answer, drag the appropriate behaviors to the correct actions. Each behavior may be used once, more than once, or not at all.
You may need to drag the split bar between panes or scroll to view content.
NOTE: Each correct selection is worth one point.

Behaviors

Restrict

Cascade All

Cascade None

Answer Area

Action

Custom table record is deleted.

Custom table record is shared.

Behavior

- A. Mastered
B. Not Mastered

Answer: A

Explanation:

Behaviors

Restrict

Cascade All

Cascade None

Answer Area

Action

Custom table record is deleted.

Custom table record is shared.

Behavior

Restrict

Cascade All

NEW QUESTION 27

- (Exam Topic 3)

You are creating a Power Virtual Agents chatbot for a Microsoft Power Platform power apps portal app. The job title of users must be stored automatically when users log in. The job title must always appear in the chatbot.

You need to configure the job title functionality. Which mechanism should you use?

- A. artificial intelligence
- B. variable
- C. entity
- D. topic

Answer: B

Explanation:

After enabling the Authentication, you will now have access to Two variables, bot.UserDisplayName

bot.UserId

Reference:

<https://powerusers.microsoft.com/t5/Power-Virtual-Agents-Community/Getting-User-Details-To-Use-In-Power>

NEW QUESTION 30

- (Exam Topic 3)

You use Power Virtual Agents to create a bot that will answer and transfer help desk calls.

You create topics that contain nodes and functions. The company has the following requirements for the bot:

- When a caller states the word issue, help, or problem, the bot must respond with the question. "How can we help you today?"
- When the bot responds with the question, "How can we help you today?", the bot must provide the caller with the choices of hardware, software or other
- When the caller asks a question, the bot must save the response so that it can perform an action on the response.

You need to configure the bot.

Which nodes or functions should you use? To answer, select the appropriate options in the answer area.

Answer Area

Requirement

Caller states **issue, help, or problem.**

Bot provides choices.

Responses are temporarily saved.

Node/Function

Trigger phrase

Trigger phrase

Question

Message

Action

Question

Action

Question

Message

Variable

Identifier

Action

Variable

Trigger

Identifier

- A. Mastered
- B. Not Mastered

Answer: A

Explanation:

Answer Area

Requirement	Node/Function
Caller states issue, help, or problem.	<div>Trigger phrase Trigger phrase Question Message Action</div>
Bot provides choices.	<div>Question Action Question Message Variable</div>
Responses are temporarily saved.	<div>Identifier Action Variable Trigger Identifier</div>

NEW QUESTION 32

- (Exam Topic 3)
You create a model-driven app for an automobile parts help desk.
A help desk agent uses a form to gather information about customers' automobiles in two custom tables. The names of the tables are Client and Automobile, The form must prepopulate the following information about the customer from the client table:

- First name
- Last name

The agent must be able to type the following information about the automobile:

- Automobile make
- Automobile model

You need to implement the form.
What should you configure? To answer, select the appropriate options in the answer area. NOTE: Each correct selection is worth one point.

Answer Area

Requirement	Configuration
Prepopulate client information	<div>Relationship Relationship Dataflow Alternate key Virtual table</div>
Enter automobile information	<div>Table Table View Connector Power Automate flow</div>

- A. Mastered
- B. Not Mastered

Answer: A

Explanation:

Answer Area

Requirement	Configuration
Prepopulate client information	<div>Relationship Relationship Dataflow Alternate key Virtual table</div>
Enter automobile information	<div>Table Table View Connector Power Automate flow</div>

NEW QUESTION 34

- (Exam Topic 3)

A company is developing several Power Virtual Agents chatbots. The company manufactures more than 1,000 different products. The chatbots must prompt users to enter or select a product.

You need to store the model information so that it can be reused across all chatbots. Where should you store the model data?

- A. Global variables
- B. Custom entities
- C. Topics
- D. Multiple choice options

Answer: A

NEW QUESTION 39

- (Exam Topic 3)

A company has marketing teams for different regions.

A user creates and publishes a chatbot within Microsoft Teams for their specific marketing team.

The base metrics retrieved by the chatbot are relevant to all marketing teams. The other marketing teams request access to the chatbot.

You need to publish the chatbot to the entire company. What should you do?

- A. Configure the chatbot to be used with the Teams channel.
- B. Submit the chatbot for admin approval.
- C. Copy the published chatbot link and email it to the other teams
- D. Invite the other teams to the team that has the chatbot.
- E. Export the chatbot and import it into a corporate environment.

Answer: B

Explanation:

Show to teammates and shared users

You can share your bot by adding it to the Microsoft Teams app store, Built for your org > Built by your colleagues section. Only your teammates and shared users will find the bot there.

Important

Only teammates or shared users can find and install the bot in the Microsoft Teams app store Built by your colleague section. The bot will not show for everyone in the organization even if it is configured to allow everyone to use the bot. To show the bot to the organization, submit the bot for admin's approval to show in Microsoft Teams app store Built by your org section.

Reference:

<https://docs.microsoft.com/en-us/power-virtual-agents/teams/publication-add-bot-to-microsoft-teams-teams>

NEW QUESTION 42

- (Exam Topic 3)

You are a Dynamics 365 administrator. You create a new app.

You need to create the site map for the app.

Which three actions should you perform in sequence? To answer, move the appropriate actions from the list of actions to the answer area and arrange them in the correct order.

Actions

Answer Area

Add a subarea.

Add a view.

Add a group.

Add an area.



- A. Mastered
- B. Not Mastered

Answer: A

Explanation:

Actions	Answer Area
<div>Add a subarea.</div>	<div>Add an area.</div>
<div>Add a view.</div>	<div><div><</div><div>Add a group.</div><div>></div></div>
<div>Add a group.</div>	<div><div>↑</div><div>Add a subarea.</div><div>↓</div></div>
<div>Add an area.</div>	

NEW QUESTION 43

- (Exam Topic 3)

You are creating a Power Virtual Agents chatbot that uses multiple topics. Each user interaction can reference more than one topic. You need to be able to capture a value in an initial topic and use it in subsequent topics. Which type of variable should you create?

- A. Bot
- B. Topic
- C. Context

Answer: A

Explanation:

Reference:
<https://docs.microsoft.com/en-us/power-virtual-agents/authoring-variables-bot>

NEW QUESTION 46

- (Exam Topic 3)

A user has access to an existing Common Data Service database. You need to ensure that the user can create canvas apps that consume data from Common Data Service. You must not grant permissions that are not required. Which out-of-the-box security role should you assign to the user?

- A. Environment Admin
- B. System Customizer
- C. Common Data Service User
- D. Environment Maker

Answer: D

Explanation:

Reference:
<https://docs.microsoft.com/en-us/power-platform/admin/database-security#predefined-security-roles> <https://docs.microsoft.com/en-us/powerapps/maker/canvas-apps/data-platform-create-app>

NEW QUESTION 50

- (Exam Topic 3)

A customer uses Power Apps to view and maintain their contacts that are stored in Microsoft Dataverse. Several columns must be configured to ensure the security settings for sales associates are view only. You need to configure the access restrictions. Which component for field-level security should you use? TO answer, select the appropriate options in the answer area. NOTE: Each correct selection is worth one point

Action	Component
Enable the fields for record-level security.	<div>Azure Data Lake Gen2</div> <div>Azure SQL</div> <div>Power Apps app designer</div> <div>Microsoft Power Platform admin center</div>
Set the security settings for the sales associates to view only.	<div>Azure Active Directory group team</div> <div>Dataverse table</div> <div>Field Security Profiles</div> <div>User</div>

- A. Mastered
- B. Not Mastered

Answer: A

Explanation:

Graphical user interface, text, application Description automatically generated

NEW QUESTION 55

- (Exam Topic 3)

You are using a development environment to add a new column to a system table. You plan to move the changes to a test environment they are complete.

The changes must meet the following requirements:

- Must be clearly identified so that they are not confused with system components and components from other solutions.
- Must not affect any existing components in the test environment. You need to prepare a solution for deployment to the test environment.

Which four actions should you perform in sequence? To answer, move the appropriate actions from the list of actions to the answer area and arrange them in the correct order.

Actions	Answer area
Create a new unmanaged solution and select the correct publisher.	
Create a new publisher.	
Select a managed solution and add the correct publisher.	
Add the table with all components to the solution.	
Choose an existing publisher.	
Add the table to the solution and add the new column.	
Run the solution checker on the solution.	

- A. Mastered
B. Not Mastered

Answer: A

Explanation:

Step 1: Create a new publisher Solution publisher

Every app and other solution components such as entities you create or any customization you make is part of a solution. Because every solution has a publisher, you should create your own publisher rather than use the default. You specify the publisher when you create a solution.

Step 2: Create a new unmanaged solution and select the correct publisher unmanaged solution

Unmanaged solutions are used in development environments while you make changes to your application. Unmanaged solutions can be exported either as unmanaged or managed. Exported unmanaged versions of your solutions should be checked into your source control system. Unmanaged solutions should be considered your source for Microsoft Power Platform assets. When an unmanaged solution is deleted, only the solution container of any customizations included in it is deleted. All the unmanaged customizations remain in effect and belong to the default solution.

Step 3: Add the table top the solution and add the new column. Step 4: Run the solution checker on the solution

Use solution checker to validate your model-driven apps in Power Apps.

Reference: <https://docs.microsoft.com/en-us/power-platform/alm/solution-concepts-alm> <https://docs.microsoft.com/en-us/power-apps/maker/data-platform/use-powerapps-checker>

NEW QUESTION 58

- (Exam Topic 3)

You are embedding a Power Apps visual in a Power BI dashboard. External customers must authenticate to have access to the dashboard. You need to configure the solution.

Which two actions should you perform? Each correct answer presents part of the solution.

NOTE: Each correct selection is worth one point.

- A. Set the Power BI service to authenticate users.
B. Use a table in the Power BI dashboard.
C. Publish to Power BI Report Server.
D. Set the Power BI service to allow anonymous access.
E. Share the Power Apps visual components with external users.

Answer: AE

Explanation:

Power BI uses Azure Active Directory (AAD) to authenticate users who sign in to the Power BI service, and in turn, uses the Power BI login credentials whenever a user attempts to access resources that require authentication. Users sign in to the Power BI service using the email address used to establish their Power BI account; Power BI uses that login email as the effective username, which is passed to resources whenever a user attempts to connect to data. The effective username is then mapped to a User Principal Name (UPN) and resolved to the associated Windows domain account, against which authentication is applied.

Reference: <https://docs.microsoft.com/en-us/power-bi/enterprise/service-admin-power-bi-security>

NEW QUESTION 59

- (Exam Topic 3)

On a Contact record, a user creates a Note record that contains the word running.

One week later, the user reports that they cannot find the Contact record associated with the Note record. You need to find the Note record.

Solution: Use Relevance Search to search for the word run. Does the solution meet the goal?

- A. Yes
B. No

Answer: A

Explanation:

Relevance Search brings the following benefits:

- Finds matches to any word in the search term in any field in the entity. Matches may include inflectional words, like "stream," "streaming," or "streamed."
- Includes the ability to search documents found in Notes and Attachments on Emails and Appointments Reference:

<https://docs.microsoft.com/en-us/power-platform/admin/configure-relevance-search-organization#what-is-releva>

NEW QUESTION 60

- (Exam Topic 3)

Note: This question is part of a series of questions that present the same scenario. Each question in the series contains a unique solution that might meet the stated goals. Some question sets might have more than one correct solution, while others might not have a correct solution.

After you answer a question in this section, you will NOT be able to return to it. As a result, these questions will not appear in the review screen.

You are creating Power Virtual Agents chatbot that captures demographic information about customers. The chatbot must determine the group a customer belongs to based on their age. The age groups are:

- > 0 - 17
- > 18 - 25
- > 26 - 35
- > 36 - 55
- > 55 - 100

You need to configure the chatbot to ask a question that can be used to determine the correct age group. Solution: Use Date and time for Identify in the question and then add branches that use conditional logic to determine the age group.

Does this meet the goal?

- A. Yes
- B. No

Answer: B

NEW QUESTION 61

- (Exam Topic 3)

You need to build a Power BI dashboard for sales managers to track opportunities.

When a new sale closes that is greater than \$1 million, a notification must pop up and an email must be sent to the leadership team.

You need to ensure the email is sent without editing the Microsoft Dataverse.

Which two elements should you configure? Each correct answer is part of the solution. NOTE: Each correct selection is worth one point.

- A. alerts in Power BI
- B. a calculated column in the Dataverse
- C. a custom connector
- D. a paginated report to save to Microsoft OneDrive
- E. a Power Automate flow

Answer: AE

NEW QUESTION 63

- (Exam Topic 3)

You are a Dynamics 365 Customer Service administrator.

You need to configure the following automation for the sales team:

- * Send an email when the status changes on an Opportunity.
- * Text the sales manager when an Opportunity is created.
- * Create a Wunderlist task when an Opportunity is open for 30 days.

Which tool should you use for each requirement? To answer, select the appropriate options in the answer area. NOTE Each correct selection is worth one point.

Automation	Tool
Email when the status changes.	<div><div></div><div>Dynamics 365 workflow</div><div>Microsoft Flow</div><div>Business Process Flow</div></div>
Text when the Opportunity is created.	<div><div></div><div>Dynamics 365 workflow</div><div>Microsoft Flow</div><div>Business Process Flow</div></div>
Create a Wunderlist task.	<div><div></div><div>Dynamics 365 workflow</div><div>Microsoft Flow</div><div>Business Process Flow</div></div>

- A. Mastered
- B. Not Mastered

Answer: A

Explanation:

Automation	Tool
Email when the status changes.	<div><div></div><div>Dynamics 365 workflow</div><div>Microsoft Flow</div><div>Business Process Flow</div></div>
Text when the Opportunity is created.	<div><div></div><div>Dynamics 365 workflow</div><div>Microsoft Flow</div><div>Business Process Flow</div></div>
Create a Wunderlist task.	<div><div></div><div>Dynamics 365 workflow</div><div>Microsoft Flow</div><div>Business Process Flow</div></div>

NEW QUESTION 65

- (Exam Topic 3)

You create a new Power Virtual Agents chatbot for an organization.

Testing and production deployment of the chatbot are not complete. You need to ensure that appropriate users can access the chatbot.

Which methods should you use? To answer, select the appropriate options in the answer area.

NOTE: Each correct selection is worth one point.

Requirement	Method
Test the chatbot with unlicensed internal users	<div><div></div><div>Use the demo website</div><div>Share the chatbot to each user individually</div><div>Share the chatbot to a security group containing all users</div></div>
Allow other licensed internal users to edit the chatbot	<div><div></div><div>Share the chatbot to each user individually</div><div>Share the chatbot to a security group containing all users</div><div>Deploy the chatbot to Microsoft Teams in your tenant</div></div>
Deploy the chatbot to production for public consumption	<div><div></div><div>Embed the chatbot code in an IFrame on your company's public website</div><div>Deploy the chatbot to Microsoft Teams in your tenant</div><div>Deploy the chatbot to AppSource</div></div>

- A. Mastered
- B. Not Mastered

Answer: A

Explanation:

Graphical user interface, application Description automatically generated

Box 1: Use the demo website

When publishing the bot to the web, you can publish to a prebuilt demo website (which you can use to share the bot with your teammates and stakeholders) and to your own live website.

Box 2: Share the chatbot to a security group containing all users.

A license for each user, also known as a "per user license" (or "Power Virtual Agent User License" as referred to on the Microsoft 365 admin center), should be assigned to individual users who need access to create and manage chatbots.

To simplify user license management, you can assign licenses to an Azure Active Directory (Azure AD) security group.

Box 3: Embed the chatbot code in an IFrame on your copany's public website

You can add your bot to a live website as an IFrame. Your live website can be a customer-facing external website or an internal site, like a SharePoint or Yammer site.

Reference:

<https://docs.microsoft.com/en-us/power-virtual-agents/publication-connect-bot-to-web-channels> <https://docs.microsoft.com/en-us/power-virtual-agents/requirements-licensing>

NEW QUESTION 67

- (Exam Topic 3)

You create a parent entity and a child entity. The parent entity has a 1:N relationship with the child entity. You need to ensure that when the owner changes on the parent record that all child records are assigned to the new owner.

You need to configure the relationship behavior type. What should you use?

- A. Parental

- B. Referential, Restrict Delete
- C. Referential
- D. Restrict

Answer: A

Explanation:

<https://docs.microsoft.com/en-us/dynamics365/customer-engagement/customize/create-and-edit-1n-relationship> A parental table relationship is any 1:N table relationship where one of the cascading options in the Parental column of the following table is true.
Graphical user interface, application Description automatically generated

Action	Parental	Not Parental
Assign	Cascade All Cascade User-owned Cascade Active	Cascade None
Delete	Cascade All	RemoveLink Restrict
Reparent	Cascade All Cascade User-owned Cascade Active	Cascade None
Share	Cascade All Cascade User-owned Cascade Active	Cascade None
Unshare	Cascade All Cascade User-owned Cascade Active	Cascade None

Reference:
<https://docs.microsoft.com/en-us/powerapps/maker/data-platform/create-edit-entity-relationships>

NEW QUESTION 71

- (Exam Topic 3)
You are customizing a model-driven app for a company. You create a Theme template to ensure the company logo and colors are properly used within these apps.
The theme must meet the following requirements:
> Updated to add the logo
> Downloaded by the makers to create the app
You need to configure the assets. To answer, drag the appropriate configurations to the correct requirements. Each configuration may be used once, more than once, or not at all. You may need to drag the split bar between panes or scroll to view content.
NOTE: Each correct selection is worth one point.

Configurations

Edit the theme in System settings and upload a jpg file.

Replace an existing UI item's hexadecimal number.

Upload the theme elements as new web resources.

Use the component library.

Answer Area

Requirement

Update logo.

Change model-driven app colors.

Configuration

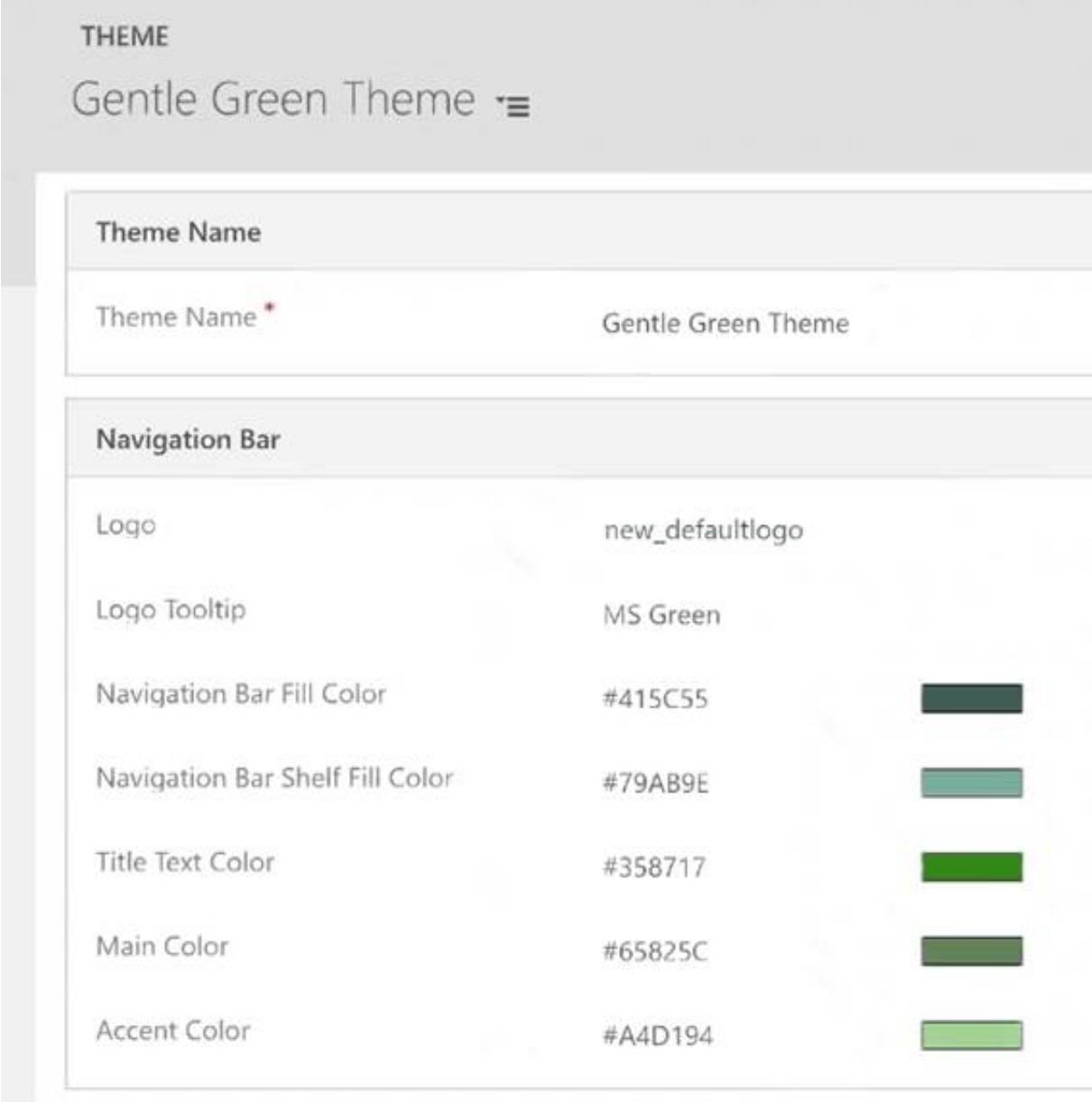
- A. Mastered
- B. Not Mastered

Answer: A

Explanation:

Box 1: Upload the theme elements as new web resources.
Each type of icon is stored as a web resource. Create a web resource first and then set the icons to use them. Alternatively, you can add the icon by creating a new web resource when you define the table properties.
Box 2: Replace an existing UI item's hexadecimal number. Copy and alter the existing theme
The easiest and quickest way to create a new theme is to clone and alter an existing theme. Then save, preview, and publish it.
> Sign in to Power Apps, select Settings icon (upper right), and then select Advanced settings.

- > Select Customizations, and then select Themes.
 - > Under All themes, select the theme you want to clone, such as the CRM Default Theme. Select Clone on the command bar.
 - > Replace an existing UI item's hexadecimal number, such as the Title Text Color, with the hexadecimal value that represents the color you want.
- For example, the CRM Default Theme was cloned and changed using mostly varying shades of green color. The following screenshots show the new colors for navigation and highlighting. A custom logo was also added that will appear in the upper left corner of an app.



Reference:
<https://docs.microsoft.com/en-us/power-apps/maker/model-driven-apps/create-themes-organization-branding>

NEW QUESTION 74

- (Exam Topic 3)
You are examining several processes to determine if you can automate the processes by using Power Automate. The processes must run without human intervention when possible. You need to determine which flow type should be used for each process. Which flow type should you use? To answer, drag the appropriate processes to the correct flow types. Each process may be used once, more than once, or not at all. You may need to drag the split bar between panes or scroll to view content.
NOTE: Each correct selection is worth one point.

Flow types	Answer Area						
<div>Scheduled cloud flow</div> <div>Attended desktop flow</div> <div>Unattended desktop flow</div>	<table><tr><th>Process</th><th>Flow type</th></tr><tr><td>Employees enter leave requests into a web page. Use web automation to collect data from the web browser and send the information to a supervisor so that the supervisor can approve or reject the leave request.</td><td></td></tr><tr><td>Read data from a text file and populate the data into a third-party desktop application by using saved credentials.</td><td></td></tr></table>	Process	Flow type	Employees enter leave requests into a web page. Use web automation to collect data from the web browser and send the information to a supervisor so that the supervisor can approve or reject the leave request.		Read data from a text file and populate the data into a third-party desktop application by using saved credentials.	
Process	Flow type						
Employees enter leave requests into a web page. Use web automation to collect data from the web browser and send the information to a supervisor so that the supervisor can approve or reject the leave request.							
Read data from a text file and populate the data into a third-party desktop application by using saved credentials.							

- A. Mastered
- B. Not Mastered

Answer: A

Explanation:

Text Description automatically generated
Box 1: Attended desktop flow
Desktop flows are used to automate tasks on the Web or the desktop. To run an attended desktop flow, you need to have an active Windows user session that matches the name of the user configured for your connection. Note: Web applications are critical components of most organizations, and they are commonly used to access data from servers. Most CRM and ERP platforms run through web browsers, while the most popular business productivity tools are web services. Web applications are unquestionably an integral part of the technological infrastructure of most companies. To provide automation solutions for these applications, Power Automate Desktop supports all major browsers through its web automation actions.

Box 2: Unattended desktop flow.

Unattended desktop flows are best for applications that do not need human supervision. References:

<https://docs.microsoft.com/en-us/learn/modules/pad-web/1-introduction> <https://docs.microsoft.com/en-us/power-automate/desktop-flows/run-pad-flow>

NEW QUESTION 75

- (Exam Topic 3)

Your organization does not permit the use of custom code for solutions. You need to create a view that can be viewed by all users in an organization. Where should you create the view?

- A. List view of the entity
- B. Microsoft Visual Studio
- C. Templates area
- D. Maker portal

Answer: A

Explanation:

Edit a public or system view in app designer

You can change the way a public or system view is displayed by adding, configuring, or removing columns.

➤ In the Views list for a table, select the Show list of references down arrow Drop Down. Edit View.Graphical user interface, application Description automatically generated

➤ Next to the view you want to edit, select Open the View Designer Open view Designer. The view opens in the view designer.

When you edit a public or system view, you must save and publish your changes before they will be visible in the application.

Reference:

<https://docs.microsoft.com/en-us/powerapps/maker/model-driven-apps/create-edit-views-app-designer>

NEW QUESTION 76

- (Exam Topic 3)

You are designing an app for a bank.

You must create entities for the app and configure relationships between entities:

Entity	Requirements
LoanApplicant	This entity represents a person who is applying for a loan. The entity must contain an attribute named Email. This attribute must provide look-up for the name of the applicant.
Loan	This entity represents a loan application. Loan applicants may apply for one loan per application. Loan applicants may have more than one active application.
Property	This entity represents the property that the applicant intends to purchase.

Which relationship types should you use? To answer, drag the appropriate relationship types to the correct requirements. Each relationship type may be used once, more than once, or not at all. You may need to drag the split bar between panes or scroll to view content.

NOTE: Each correct selection is worth one point.

Relationship types	Answer Area								
<div>1 : N</div> <div>N : N</div> <div>N : 1</div>	<table><tr><th>Requirement</th><th>Relationship type</th></tr><tr><td>The email attribute of the Loan Applicant entity must provide a look-up to the contact name and email.</td><td><div></div></td></tr><tr><td>Loan applicants can apply for one type of loan per application. Applicants can have more than one application.</td><td><div></div></td></tr><tr><td>Loans must be applied for for a single property.</td><td><div></div></td></tr></table>	Requirement	Relationship type	The email attribute of the Loan Applicant entity must provide a look-up to the contact name and email.	<div></div>	Loan applicants can apply for one type of loan per application. Applicants can have more than one application.	<div></div>	Loans must be applied for for a single property.	<div></div>
Requirement	Relationship type								
The email attribute of the Loan Applicant entity must provide a look-up to the contact name and email.	<div></div>								
Loan applicants can apply for one type of loan per application. Applicants can have more than one application.	<div></div>								
Loans must be applied for for a single property.	<div></div>								

- A. Mastered
- B. Not Mastered

Answer: A

Explanation:

Text Description automatically generated

Box 1: N:1

You add a lookup column with a many-to-one relationship.

Box 2: N:N

Box 3: N:1

Reference:

<https://docs.microsoft.com/en-us/powerapps/maker/data-platform/data-platform-entity-lookup>

NEW QUESTION 78

- (Exam Topic 3)

You have a Power Apps portal app that supports a sales community and a service community in the same environment. The only language configured in the environment is English. The company wants to add support for two more languages.

The solution must meet the following requirements:

- > Languages must be for both sales and service functions.
- > The company logo and colors must be used and apply to all screens.
- > Communities must be separate with different URLs and access lists.

You need to configure the solution.

What should you configure? To answer, select the appropriate options in the answer area.

NOTE: Each correct selection is worth one point.

Requirement

Configuration

Languages

Create two portals, one for each community.

Create three portals, one for each language.

Create one portal and import translations.

Create six portals, one for each combination of language and community.

Company logo and colors

Add themes.

Add web resources.

Add a portal header and footer

- A. Mastered
- B. Not Mastered

Answer: A

Explanation:

Box 1: Create two portals, one for each community Power Apps portal app languages

Box 2: Add themes

You can create a custom look and feel (a theme), for your app by making changes to the default colors and visual elements provided in the uncustomized system. For example, you can create your personal product branding by adding a company logo and providing table-specific coloring. A theme can be created by using the Themes area, without requiring a developer to write code. You can create, clone, change, or delete themes that are used in your environment.

Reference:

<https://docs.microsoft.com/en-us/power-apps/maker/model-driven-apps/create-themes-organization-branding>

NEW QUESTION 79

- (Exam Topic 3)

A company plans to automate the following manual processes by using Power Automate. You need to identify UI flow types for the two business processes.

Process	Time to Complete	Comments
1	30 minutes	The user's device must remain unlocked when the business process runs. The user will be required to leave their device unattended in a secure setting while the business process runs so that the user can assist with other efforts.
2	45 minutes	The process must run after normal business hours. The device that runs the business process must remain unlocked when the business process is not running.

Which desktop flow type should you use? To answer, drag the appropriate desktop flow types to the correct business processes. Each desktop flow type may be used once, more than once, or not at all. You may need to drag the split bar between panes or scroll to view content.

NOTE: Each correct selection is worth one point.

Desktop flow types

Attended

Unattended

Answer Area

Business process	Desktop flow type
1	<div>Desktop flow type</div>
2	<div>Desktop flow type</div>

- A. Mastered
- B. Not Mastered

Answer: A

Explanation:

Graphical user interface, application Description automatically generated

NEW QUESTION 83

- (Exam Topic 3)

You are setting up Power Apps security for a company. The company has a CEO, two vice presidents, and 10 managers. Five support representatives report to each manager.

You set up Manager Hierarchy so managers are able to view data only for the representatives who report to them. The CEO must be able to view all data for everyone. All support representatives must be able to view customer information in each other's data across all managers.

You need to resolve issues that arise during testing.

What should you do? To answer, select the appropriate options in the answer area.

NOTE: Each correct selection is worth one point.

Issue	Action
Managers are unable to view all their report data.	<div><div></div><div>Add the manager's name to the representative's user record.</div><div>Change the Manager Hierarchy depth to 2.</div><div>Move the manager and reports to a separate business unit.</div><div>Set up a position in hierarchy.</div></div>
The CEO is unable to view representative data but can view manager data.	<div><div></div><div>Add the CEO to the representative user record as a manager.</div><div>Change Manager Hierarchy depth to 3.</div><div>Create team security.</div></div>
Five support representatives can view only their own data.	<div><div></div><div>Add the manager's name to the representative's user record.</div><div>Add users to field security.</div><div>Set up a position hierarchy.</div></div>

- A. Mastered
- B. Not Mastered

Answer: A

Explanation:

Box 1: Move the manager and reports to a separate business unit.

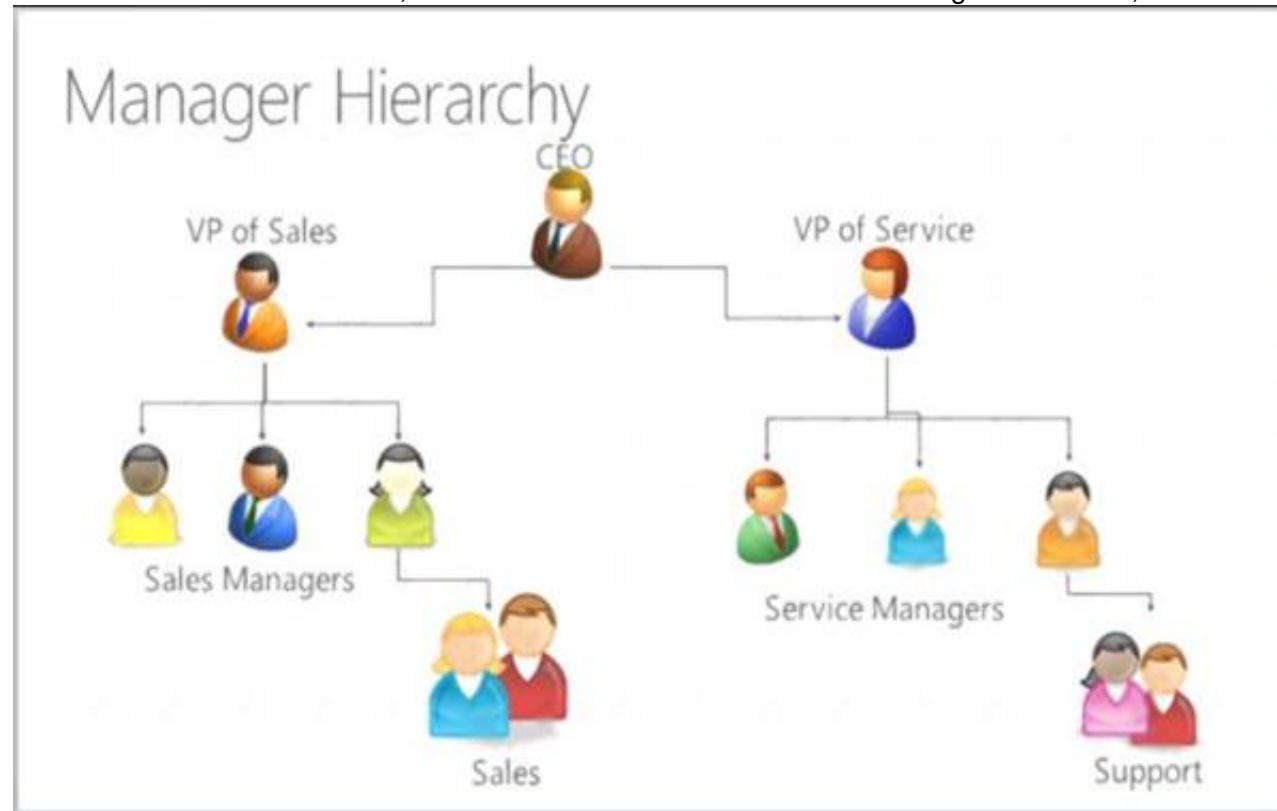
Keep the Manager hierarchy, and put the reports to the appropriate business unit.

Note: Two security models can be used for hierarchies, the Manager hierarchy and the Position hierarchy. With the Manager hierarchy, a manager must be within the same business unit as the report, or in the parent business unit of the report's business unit, to have access to the report's data. The Position hierarchy allows data access across business units. If you are a financial organization, you may prefer the Manager hierarchy model, to prevent managers' accessing data outside of their business units. However, if you are a part of a customer service organization and want the managers to access service cases handled in different business units, the Position hierarchy may work better for you.

Box 2: Add the CEO to the representative user record as a manager. Set up Manager and Position hierarchies

The Manager hierarchy is easily created by using the manager relationship on the system user record. You use the Manager (ParentsystemuserID) lookup field to specify the manager of the user.

Note: Depth is used to limit how many levels deep a manager has Read-only access to the data of their reports. For example, if the depth is set to 2, the CEO can see the data of the VP of Sales, VP of Service and Sales and Service Managers. However, the CEO doesn't see the Sales data or the Support data.



Box 3: Add users to field security

Power Platform's field-level security lets you set which fields users can see or edit. Reference: <https://docs.microsoft.com/en-us/power-platform/admin/hierarchy-security> <https://docs.microsoft.com/en-us/power-platform/admin/field-level-security>

NEW QUESTION 84

- (Exam Topic 3)

You plan to create user interface (UI) flows to automate several web-based business processes that you currently perform manually. You need to ensure that users can create and run web UI flows.

Which three components must you install and configure on user's devices? Each correct answer presents part of the solution. NOTE Each correct selection is worth one point.

- A. UI Flows application
- B. Selenium IDE
- C. Latest version of Microsoft Edge
- D. On-premises data gateway
- E. Latest version of Mozilla Firefox

Answer: ABC

Explanation:

Reference:
<https://docs.microsoft.com/en-us/power-automate/ui-flows/setup>

NEW QUESTION 87

- (Exam Topic 3)

You have a business process flow (BPF) that interacts with the Account entity. You configure a new version for the BPF and add a new stage at the beginning. You need to identify the impact of the new version on the existing account records.

What is the outcome in each scenario? To answer, select the appropriate options in the answer area. NOTE: Each correct selection is worth one point.

Scenario	Action
What happens to existing accounts?	<div><div></div><div>Existing accounts show the old BPF.</div><div>Existing accounts show the new BPF.</div><div>Existing accounts only show the new stage.</div></div>
What happens to new accounts?	<div><div></div><div>No BPF is linked to a new account.</div><div>The new BPF shows only the new stage for a new account.</div><div>The new BPF is showing in a new account.</div></div>

- A. Mastered
- B. Not Mastered

Answer: A

Explanation:

Graphical user interface, text Description automatically generated

Box 1: Existing accounts show the new BPF.

When an entity record is being created and if there are multiple BPFs defined on that entity. The system would do the following:

If the ProcessId field is set to Guid.Empty. The system will skip defaulting the BPF on that instance.

If the ProcessId field is set to specific BPF entity reference. The system will default to the specified BPF. If the ProcessId field on the record is not set. The system will default the BPF.

Box 2: No BPF is linked to a new account.

Note: A business process flow definition is represented as a custom entity and an instance of a process is stored as a record within that entity. Each record is associated with a data record (such as an Account, Contact, Lead, or Opportunity) and in case of cross-entity processes, with a data record for each participating entity.

Reference:
<https://docs.microsoft.com/en-us/dynamics365/customerengagement/on-premises/customize/business-process-fl>

NEW QUESTION 90

- (Exam Topic 3)

You are a Dynamics 365 for Customer Service developer.

You must trigger a mobile notification whenever a specific hashtag is posted from Twitter. The notification will send email to the company's social media teams distribution list.

You need to create a connection to the Twitter service and build a solution.

Which four actions should you perform in sequence? To answer, move the appropriate actions from the list of actions to the answer area and arrange them in the correct order.

Actions	Answer Area
Sign in to the Business platform admin center and create a new project and connection set.	
Create a trigger to search for the new posts with the hashtag.	
Create an action to send a mobile notification.	
Sign in to Power Automate and create a new blank flow.	<div>⏪</div> <div>⏩</div>
Create a trigger to send a mobile notification.	
Select the social media connector, generate an authentication key from the service, and enter the key for the connection.	
Create an action to search for the new posts with the hashtag.	
Select the social media connector and enter the user credentials for the connection.	

- A. Mastered
- B. Not Mastered

Answer: A

Explanation:

Actions	Answer Area
Sign in to the Business platform admin center and create a new project and connection set.	Sign in to Power Automate and create a new blank flow.
Create a trigger to search for the new posts with the hashtag.	Select the social media connector and enter the user credentials for the connection.
Create an action to send a mobile notification.	
Sign in to Power Automate and create a new blank flow.	<div>⏪</div> <div>⏩</div>
Create a trigger to send a mobile notification.	Create an action to search for the new posts with the hashtag.
Select the social media connector, generate an authentication key from the service, and enter the key for the connection.	
Create an action to search for the new posts with the hashtag.	
Select the social media connector and enter the user credentials for the connection.	Create a trigger to send a mobile notification.

NEW QUESTION 94

- (Exam Topic 3)

You are developing a canvas app.

You need to apply business rules to the app without writing code.

Which three actions can you use? Each correct answer presents a complete solution.

NOTE: Each correct selection is worth one point.

- A. Validate data and show error messages.
- B. Enable or disable fields.
- C. Set field requirement levels.
- D. Set field values.
- E. Show or hide fields

Answer: ACD

Explanation:

The following actions are not available on Canvas apps:

- > Show or hide columns
- > Enable or disable columns
- > Create business recommendations based on business intelligence Reference:

<https://docs.microsoft.com/en-us/powerapps/maker/data-platform/data-platform-create-business-rule>

NEW QUESTION 96

- (Exam Topic 3)

Note: This question is part of a series of questions that present the same scenario. Each question in the series contains a unique solution that might meet the stated goals. Some question sets might have more than one correct solution, while others might not have a correct solution.

After you answer a question in this section, you will NOT be able to return to it. As a result, these questions will not appear in the review screen.

You are creating Power Virtual Agents chatbot that captures demographic information about customers. The chatbot must determine the group a customer belongs to based on their age. The age groups are:

- > 0 - 17
- > 18 - 25
- > 26 - 35
- > 36 - 55
- > 55 - 100

You need to configure the chatbot to ask a question that can be used to determine the correct age group.

Solution: Use multiple choice for Identify in the question and create options that represent of the age groups. Does this meet the goal?

- A. Yes
- B. No

Answer: B

NEW QUESTION 101

- (Exam Topic 3)

A company has locations in the United States, Brazil, India, and Japan. The company conducts financial transactions in all of these regions.

Financial transactions in Brazil are going to stop, but the office will remain open.

Users must longer be able to create records associated with the Brazilian currency. Historical records must remain intact

You need to configure Microsoft Dataverse to meet the requirement What should you do?

- A. Rename the Brazilian currency.
- B. Delete the Brazilian currency record.
- C. Disable the Brazilian language pack
- D. Deactivate the Brazilian currency record.

Answer: D

Explanation:

You can't delete currencies that are in use by other records; you can only deactivate them. Deactivating currency records doesn't remove the currency information stored in existing records, such as opportunities or orders. However, you won't be able to select the deactivated currency for new transactions.

Reference:

<https://docs.microsoft.com/en-us/power-platform/admin/manage-transactions-with-multiple-currencies>

NEW QUESTION 102

- (Exam Topic 3)

You are creating a business rule to implement new business logic.

You must apply the business logic to a canvas app that has a single screen named Screen1. You need to configure the scope for the business rule.

Which scope should you use?

- A. All Forms
- B. Entity
- C. Screen1
- D. Global

Answer: B

Explanation:

Note: Some terminology has changed. Entity is now Table. If you're building a Canvas app, you must use table (entity) as the scope.

Reference:

<https://docs.microsoft.com/en-us/powerapps/maker/common-data-service/data-platform-create-business-rule>

NEW QUESTION 104

- (Exam Topic 3)

You are creating a new business process flow to qualify leads.

You create an action. The action is not available inside the Action Step. You need to make the action available to the Action Step.

Which two steps must you perform? Each correct answer presents part of the solution. NOTE: Each correct selection is worth one point.

- A. Activate the action.
- B. Select Run as an on-demand process
- C. Add at least one step to the action.
- D. Ensure that the entity for the action matches the corresponding entity for the business process flow stage.

Answer: CD

Explanation:

Reference:

<https://docs.microsoft.com/en-us/business-applications-release-notes/april18/microsoft-flow/add-action-business>

NEW QUESTION 106

- (Exam Topic 3)
You create a Power Platform help Desk solution.
You need to create a dashboard that displays information on help desk cases that are handled each week. Which dashboard components should you use? To answer, select the appropriate options in the answer area. NOTE: Each correct selection is worth one point.

Requirement	Component type
Add a tag chart by using opened cases.	<div><div></div><div>System chart</div><div>Personal dashboard</div><div>Area chart</div></div>
Add a stacked column chart shared with your team.	<div><div></div><div>System chart</div><div>Personal dashboard</div><div>Area chart</div></div>
Add a Microsoft Power BI visualization.	<div><div></div><div>System chart</div><div>Personal dashboard</div><div>Area chart</div></div>
Add a chart from a view that a user creates.	<div><div></div><div>System chart</div><div>Personal dashboard</div><div>Area chart</div></div>
Add a doughnut chart that shows cases by owner.	<div><div></div><div>System chart</div><div>Personal dashboard</div><div>Area chart</div></div>

- A. Mastered
- B. Not Mastered

Answer: A

Explanation:
Box 1: Area chart Box 2: System chart
System charts are organization-owned charts, which makes them available to anyone with access to read the data running the app. System charts can't be assigned or shared with specific app users.
Box 3: Personal dashboard Box 4: Personal dashboard Box 5: Area chart
Reference:
<https://docs.microsoft.com/en-us/powerapps/user/add-powerbi-dashboards> <https://docs.microsoft.com/en-us/powerapps/maker/model-driven-apps/create-edit-system-chart>

NEW QUESTION 110
.....

Relate Links

100% Pass Your PL-200 Exam with Examible Prep Materials

<https://www.examible.com/PL-200-exam/>

Contact us

We are proud of our high-quality customer service, which serves you around the clock 24/7.

Viste - <https://www.examible.com/>